



SHIELDS

- Customize your helmet with blue mirror, silver mirror, smoke, light smoke or amber shield; quick release mechanism allows easy installation.
- UV protection for all tint shields.



Single Shield without ratchet

The latest advance optically corrected polycarbonate ZOx shield distortion-free feature a scratch-resistant and anti-fog coating and provide nearly 100% UV protection. **For casque Genesis, Nevado, Hi Quest, Tavani, Corsa, Supercomp, Armada (FF-MHR-15)**

86-96070	Clear - Anti-scratch	(D)
86-96071	Light Smoke - Anti-scratch	(D)
86-96072	Dark Smoke - Anti-scratch	(D)
86-96081	Mirror Blue - Anti-scratch	(D)
86-96079	Mirror Chrome - Anti-scratch	(D)
86-96083	Clear - Anti-fog, Anti-scratch	(D)
86-96077	Light Smoke - Anti-fog, Anti-scratch	(D)
86-96078	Dark Smoke - Anti-fog, Anti-scratch	(D)

86-96083-01



86-96078-01



Replacement single shields for Odyssey (FF-MHR-29)

86-96083-01	Clear - Anti-fog, Anti-scratch	(D)
86-96078-01	Dark Smoke - Anti-fog, Anti-scratch	(D)

Competition shields Odyssey with post for tear-off (FF-MHR-29)

86-96083-02	Clear Shield with post	(D)
86-96078-03	Dark Smoke shield with post	(D)
86-96083-04	Dark Smoke shield with post & tear-off	(D)



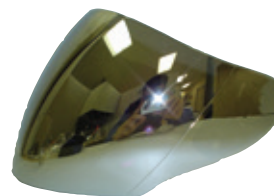
Simple shields with and without Ratchet kit for street helmets azuma, savo JR, Spectra R, Magnum, thunder

Shield With Ratchet Kit (WS-10)

86-93001	Clear Shield	(D)
86-93002	Dark Smoke Shield	(D)
86-93003	Light Smoke Shield	(D)
86-93004	Amber Shield	(D)
86-93005	Blue Mirror	(D)
86-93023	Red Mirror	(D)
86-93006	Silver Mirror	(D)

Shield without ratchet kit (WS-10)

86-93024	Clear Shield w/o ratchet	(V)
86-93030	Light Smoke Shield w/o ratchet	(V)
86-93031	Amber Shield w/o ratchet	(V)
86-93032	Blue Mirror Shield w/o ratchet	(V)
86-93034	Silver Mirror Shield w/o ratchet	(V)



86-90009



86-90008

Shield with ratchet kit

For Kaba, Bino & Urban Rider helmets (WS-18)

86-90008	Smoke	(V)
86-90009	Silver Mirror	(V)

Shield without ratchet kit (WS-18)

For Kaba, Bino & Urban Rider helmets

86-93035	Clear	(V)
86-93036	Smoke	(V)
86-90013	Ratchet	(D)

Shield without ratchet kit

For Bino V helmets

86-96097	Clear	(D)
-----------------	-------	-----

Shield without ratchet kit (OF-MHR-25)

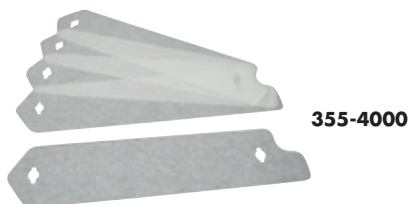
For Etna SVS helmets

86-96035	Clear	(V)
-----------------	-------	-----

Shield without ratchet kit (OF-MHR-32)

For Roost RX helmets

86-95128-16	Smoke	(D)
--------------------	-------	-----



355-4000

Flat shield with post for tear-off

86-93042*	Clear shield with post	(D)
86-93041	Ratchet kit	(D)
355-4000	"Tear-off" set of 5 Std. tab type (0.007" thick)	(D)

*These shields only can work with specific ratchet 86-93041 customer has to buy both together. Does not fit on SAVO JUNIOR



REPLACEMENT PARTS

Kanaga

88-90149	Kanaga Top Liner XS	(V)
88-90150	Kanaga Top Liner S	(V)
88-90151	Kanaga Top Liner M	(V)
88-90152	Kanaga Top Liner L	(V)
88-90153	Kanaga Top Liner XL	(V)
88-90154	Kanaga Top Liner 2XL	(V)
88-90155	Kanaga Top Liner 3XL	(V)
88-90156	Kanaga Cheek Pads XS	(V)
88-90157	Kanaga Cheek Pads S	(V)
88-90158	Kanaga Cheek Pads M	(V)
88-90159	Kanaga Cheek Pads L	(V)
88-90160	Kanaga Cheek Pads XL	(V)
88-90161	Kanaga Cheek Pads 2XL	(V)
88-90162	Kanaga Cheek Pads 3XL	(V)

Condor

88-90163	Condor Top Liner XS	(V)
88-90164	Condor Top Liner S	(V)
88-90165	Condor Top Liner M	(V)
88-90166	Condor Top Liner L	(V)
88-90167	Condor Top Liner XL	(V)
88-90168	Condor Top Liner 2XL	(V)
88-90169	Condor Top Liner 3XL	(V)
88-90170	Condor Cheek Pads XS	(V)
88-90171	Condor Cheek Pads S	(V)
88-90172	Condor Cheek Pads M	(V)
88-90173	Condor Cheek Pads L	(V)
88-90174	Condor Cheek Pads XL	(V)
88-90175	Condor Cheek Pads 2XL	(V)
88-90176	Condor Cheek Pads 3XL	(V)

Odyssey

88-90177	Odyssey Carbon Top Liner XS	(V)
88-90178	Odyssey Carbon Top Liner S	(V)
88-90179	Odyssey Carbon Top Liner M	(V)
88-90180	Odyssey Carbon Top Liner L	(V)
88-90181	Odyssey Carbon Top Liner XL	(V)
88-90182	Odyssey Carbon Top Liner 2XL	(V)
88-90183	Odyssey Carbon Cheek Pads XS	(V)
88-90184	Odyssey Carbon Cheek Pads S	(V)
88-90185	Odyssey Carbon Cheek Pads M	(V)
88-90186	Odyssey Carbon Cheek Pads L	(V)
88-90187	Odyssey Carbon Cheek Pads XL	(V)
88-90188	Odyssey Carbon Cheek Pads 2XL	(V)

Sport Tek

88-90189	Sport Tek Top Liner XS	(V)
88-90190	Sport Tek Top Liner S	(V)
88-90191	Sport Tek Top Liner M	(V)
88-90192	Sport Tek Top Liner L	(V)
88-90193	Sport Tek Top Liner XL	(V)
88-90194	Sport Tek Top Liner 2XL	(V)
88-90195	Sport Tek Top Liner 3XL	(V)
88-90196	Sport Tek Cheek Pads XS	(V)
88-90197	Sport Tek Cheek Pads S	(V)
88-90198	Sport Tek Cheek Pads M	(V)
88-90199	Sport Tek Cheek Pads L	(V)
88-90200	Sport Tek Cheek Pads XL	(V)
88-90201	Sport Tek Cheek Pads 2XL	(V)
88-90202	Sport Tek Cheek Pads 3XL	(V)
88-96172	Sport Tek Internal SVS Shield Clear	(V)
88-96173	Sport Tek Internal SVS Shield Dark Smk	(V)
88-96174	Sport Tek Ratchet Kit	(V)

Primo Jr

88-90203	Primo Jr Top Liner S	(V)
88-90204	Primo Jr Top Liner M	(V)
88-90205	Primo Jr Top Liner L	(V)
88-90206	Primo Jr Cheek Pads S	(V)
88-90207	Primo Jr Cheek Pads M	(V)
88-90208	Primo Jr Cheek Pads L	(V)
88-96174	Primo Jr Ratchet Kit	(V)

ZOX FLIP-UP HELMET PARTS & ACCESSORIES NEVADO, NEVADO SVS, HI-QUEST, GENESSIS & GENESSIS SVS



1 Single Shield without ratchet

The latest advance optically corrected polycarbonate ZOX shield distortion-free feature a scratch-resistant and anti-fog coating and provide nearly 100% UV protection.

86-96070	Clear - Anti-scratch	(D)
86-96071	Light Smoke - Anti-scratch	(D)
86-96072	Dark Smoke - Anti-scratch	(D)
86-96081	Mirror Blue - Anti-scratch	(D)
86-96079	Mirror Chrome - Anti-scratch	(D)

86-96083	Clear - Anti-fog, Anti-scratch	(D)
86-96077	Light Smoke - Anti-fog, Anti-scratch	(D)
86-96078	Dark Smoke - Anti-fog, Anti-scratch	(D)



2 Ratchet Kit System

For Tavani R/S, Corsa R, Supercomp R/S, Genesis, Nevada R/S, Hi-Quest R/S. ZOX quick release allow you to change face shield simply by pulling the release levels.

86-95102	Ratchet Kit	(D)
86-96202	Screw for ratchet kit M4 X 4MM	(D)
86-96206	Screw for ratchet kit M4 X 7MM	(D)



3 Top Vent

For Nevada R/S, Hi-Quest R/S, Genesis, Etna SVS helmets

86-95103-01	Black	(D)
86-96201	Sliding vent	(D)
86-96205	Vent Screw	(T)



4 Flip-up modified Side covers (pair)

For Nevada R/S & Hi-Quest R/S helmets, Genesis

86-96076	(D)	pr
----------	-----	----

5 Red strap Snap

86-96301	Red Strap Snap	(D)
----------	----------------	-----



6 Mouth Vent Complete with Grill

Lower air intake specifically designed to flow air on the shield to prevent fogging. For Nevada R/S, Hi-Quest R/S, Tavani R/S Corsa R, Supercomp R/S helmets

86-95104-01	Black	(D)
-------------	-------	-----



6 New Mouth Vent

For genesis and Nevada helmets

86-95104-02	Matte Black	(D)
-------------	-------------	-----



7 Flip-up chin guard spoiler

For Nevada R/S, Hi-Quest R/S, Genesis helmets.

86-96059	Flip-up Chin Guard Spoiler	(D)
86-95082	Snow CHIN CURTAIN	(D)

8 Nevada/Genesis SVS side slider base w/ lever

86-96080	(D)
----------	-----

ZOX FLIP-UP HELMET PARTS & ACCESSORIES

NEVADO, NEVADO SVS, HI-QUEST, GENESSIS & GENESSIS SVS



9

Top Rear stabilizer air exhaust fins

For Hi-Quest R/S, Etna SVS, Genesis helmets

86-96003-01	Black	(D)
86-96003-03	Silver	(D)
86-96003-06	Matte Black	(T)
86-96003-10	Wildflower Matte Black	(T)
86-96003-11	Wildflower Matte Blue	(T)
86-96003-12	Wildflower Matte Red	(T)
86-96003-13	Flash Matte Silver	(D)
86-96003-14	Flash Matte Red	(D)
86-96003-15	Flash Matte Blue	(D)
86-96003-16	Flash glossy silver	(D)
86-96003-17	Flash glossy red	(D)
86-96003-18	Flash glossy blue	(D)

Stabilizer fins

86-90018	Alize Red	(D)
86-90019	Alize Blue	(D)
86-90020	Alize Green	(D)
86-90021	Alize Yellow	(D)
86-90022	Alize Orange	(D)



9

Central top fins

For Forza / Air Attack helmets, Flip-Up

86-96001	Glossy Black chrome	(D)
86-96002	Glossy Silver chrome	(D)
86-96003	Matte Black chrome	(D)
86-96004	Matte Silver chrome	(D)

9

Top rear vent cover Set of 2

For Nevado R/S helmets.

86-96002-01	Top rear vent Cover - Black	(D)
-------------	-----------------------------	-----

Cover set of 2

86-90023	Asteroid Silver	(D)
86-90024	Asteroid Red	(D)
86-90025	Asteroid Blue	(D)

10

Dark blue cheekpads Coolmax

For Nevado R/S, Hi-Quest R/S, Genesis S, Etna SVS. Set of 2 Cheek Pad

86-96066-43	2XS	(D)
86-96066-41	X	(D)
86-96066-39	S	(D)
86-96066-37	M	(D)
86-96066-35	L	(D)
86-96066-33	XL	(D)
86-96066-31	2XL	(D)



11

Dark blue top liner Coolmax

For Nevado R/S, Hi-Quest R/S, Genesis S, Etna SVS

86-96064-10	2XS	(D)
86-96064-11	XS	(D)
86-96064-12	S	(D)
86-96064-13	M	(D)
86-96064-14	L	(D)
86-96064-15	XL	(D)
86-96064-16	2XL	(D)

12

Ratchet kit for chin bar

86-96041	For Flip-Up, Nevado and Hi-Quest	(D)
86-96042	Pivot Screw	(D)

13

Gasket & Side Trim

86-96302	Top Eye Port Gasket	(D)	ea
86-96303	Eye Port Gasket	(D)	ea
86-96089	Side Trim	(D)	pr



86-96060



86-96061



86-96068

86-96067



86-96069

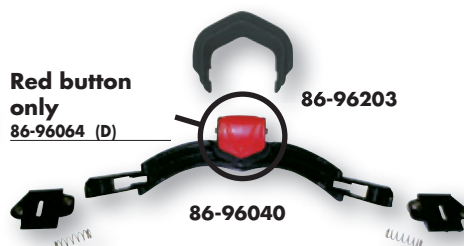
14

Chin bar cover kit

For Nevado R/S, Hi-Quest R/S, Genesis R/S helmets

86-96060	2006-07 Models	(D)
86-96061	Plastic cover piece for EPS (06-07 model)	(D)
86-96067	Chin Bar upgrade kit	(D)
86-96068	Plastic cover (3 snap) for Hi-Quest R & Nevado R	(D)
86-96069	Chin Bar EPS insert	(D)
86-96073	6 pieces of screws for cover	(D) set
86-96074	Plastic cover (7 snaps) for Hi-Quest S and Nevado S	(D)

Red button only
86-96064 (D)



86-96203

86-96040

14

Push button mechanism (before 2009)

For Flip-up chin bar opening, for Nevado, Hi Quest & Genesis helmets.

86-96040	Push button mechanism	(D)
86-96203	Joint	(T)
86-96064	Red button	(D)
86-96075	Push Strap	(D)

86-96075

ZOX FULL FACE HELMET PARTS & ACCESSORIES TAVANI R, CORSA & SUPERCOMP

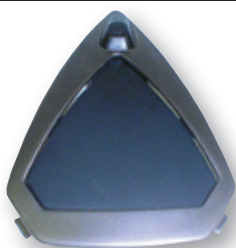


1

Ratchet Kit System

ZOX quick release allow you to change face shield simply by pulling the release levels.

86-95102	Ratchet Kit	(D)
86-96202	Screw for ratchet kit M4 X 4MM	(D)
86-96206	Screw for ratchet kit M4 X 7MM	(D)



2

Top Vent

86-95106-03	Glossy black Chrome	(D)
86-95106-06	Matte Silver Chrome	(D)



2

New Tavani Top vent central

86-95106-02	Matte black	(D)
--------------------	-------------	-----



3

Black full face chin guard

Chin guard keeps cold air from rising into the helmets. For Tavani R/S, Corsa R, Supercomp R/S helmets.

86-96030	Full face chin guard Street	(D)
86-95065	Full face chin guard Snowmobile	(D)



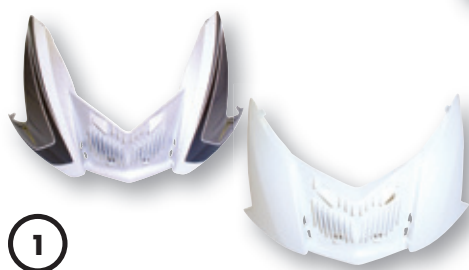
4

Top rear stabilizer air exhaust fins

For Corsa, Supercomp R/S. Size: 2XS, XS, S, M helmets

86-96094-01	Glossy Black	(D)
86-96094-02	Glossy silver	(T)
86-96094-03	Matte black	(T)
86-96094-04	Matte Red	(T)
86-96094-05	Matte blue	(T)
86-96094-06	Matte dark silver	(T)
86-96094-07	Jagged Glossy red	(T)
86-96094-08	Jagged glossy blue	(T)
86-96094-09	Jagged glossy Silver Black	(T)
86-96094-10	Wildflower Matte Pink	(T)
86-96094-11	Wildflower Matte red	(T)
86-96094-12	Wildflower Matte blue	(T)
86-96094-13	Blaze Matte red	(T)
86-96094-14	Blaze Matte blue	(T)
86-96094-15	Blaze Matte Silver Black	(T)
86-96094-16	Blaze Glossy red	(T)
86-96094-17	Blaze Glossy blue	(T)
86-96094-19	Sharp Generic	(T)
86-96094-20	Sharp Red	(T)
86-96094-21	Sharp Blue	(T)

ZOX FULL FACE HELMET PARTS & ACCESSORIES - TAVANI R, CORSA & SUPERCOMP



1

Top rear stabilizer air exhaust fins

For Corsa, Supercomp R/S
Size: L /XL/2XL helmets

86-96095-21	Glossy Black	(T)
86-96095-22	Glossy silver	(T)
86-96095-23	Matte black	(T)
86-96095-24	Matte red	(T)
86-96095-25	Matte blue	(T)
86-96095-26	Matte dark silver	(T)
86-96095-27	Jagged Glossy red	(T)
86-96095-28	Jagged glossy blue	(T)
86-96095-29	Jagged glossy Silver Black	(T)
86-96095-30	Wildflower Matte Pink	(T)
86-96095-31	Wildflower Matte red	(T)
86-96095-32	Wildflower Matte blue	(T)
86-96095-33	Blaze Matte red	(T)
86-96095-34	Blaze Matte blue	(T)
86-96095-35	Blaze Matte Silver Black	(T)
86-96095-36	Blaze Glossy red	(T)
86-96095-37	Blaze Glossy blue	(T)
86-96095-39	Sharp Generic	(T)
86-96095-40	Sharp Red	(T)
86-96095-41	Sharp Blue	(T)
86-96095-44	Mechanicalamity Matte Black/Red	(T)
86-96095-46	Mechanicalamity Glossy Dark Silver/Blue	(T)



1

Central top fins

For Forza / Air Attack helmets

86-96001	Glossy Black chrome	(D)
86-96002	Glossy Silver chrome	(D)
86-96003	Matte Black chrome	(D)
86-96004	Matte Silver chrome	(D)



1

Top rear vent cover set of 2

For Tavani R/S helmets

86-96001-01	Rear Set Vent Cover - Black	(D)
-------------	--------------------------------	-----

Cover set of 2

86-90026	Cyclone Red	(D)
86-90027	Cyclone Blue	(D)
86-90028	Cyclone Black	(D)
86-90029	Cyclone Green	(D)
86-90030	Cyclone Yellow	(D)
86-90031	Cyclone Orange	(D)

C



3

Mouth Vent Complete with Grill

Lower air intake specifically designed to flow air on the shield to prevent fogging. For Nevada R/S, Hi-Quest R/S, Tavani R/S Corsa R, Supercomp R/S helmets

86-95104-01	Black	(D)
-------------	-------	-----



3

Mouth Vent

For Tavani helmet

86-95104-02	Matte Black	(D)
-------------	-------------	-----



4

Dark blue cheekpads Coolmax

For Tavani R/S, Corsa R, Supercomp R/S helmets.
Set of 2 Cheek Pads

86-96065-43	2XS	(D)
86-96065-41	XS	(D)
86-96065-39	S	(D)
86-96065-37	M	(D)
86-96065-35	L	(D)
86-96065-33	XL	(D)
86-96065-31	2XL	(D)
86-96065-32	3XL For Tavani only	(D)
86-96065-34	4XL For Tavani only	(D)
86-96065-36	5XL For Tavani only	(D)

5

Dark blue top liner Coolmax

For Tavani R/S, Corsa R, Supercomp R/S

86-96064-00	2XS	(D)
86-96064-01	XS	(D)
86-96064-02	S	(D)
86-96064-04	L	(D)
86-96064-05	XL	(D)
86-96064-06	2XL	(D)
86-96064-07	3XL	(D)
86-96064-08	4XL	(D)
86-96064-09	5XL	(D)

ZOX FULL FACE HELMET PARTS & ACCESSORIES - ODYSSEY



1

Ratchet kits

For Odyssey, RKT2000

86-95102	Ratchet Kit	(D)
----------	-------------	-----



6

Rear side vent

86-95106-67	Glossy black	(D)	pr
86-95106-69	White	(D)	pr



10

CHIN CURTAIN

For Odyssey, RKT2000

86-96144	For XS-M	(D)
86-96143	For L-2XL	(D)



2

Mount vent

86-95104-50	Black	(D)
-------------	-------	-----



7

Central rear fins

(L - 4XL)

86-95106-65	White	(D)
(2XS - M)		
86-95206-64	Matte black	(D)
86-95206-65	White	(D)



11

Top Liner

For Odyssey, RKT2000

86-96064-50	2XS	(D)
86-96064-51	XS	(D)
86-96064-52	S	(D)
86-96064-53	M	(D)
86-96064-54	L	(D)
86-96064-55	XL	(D)
86-96064-56	2XL	(D)
86-96064-57	3XL	(D)



5

Top central vent

86-95106-52	White	(D)
-------------	-------	-----



8

Lower, rear collar exhaust vents aid

(L - 4XL)

86-95106-71	Matte black	(D)
86-95106-73	White	(D)
(2XS - M)		
86-95206-71	Matte black	(D)
86-95206-73	White	(D)



12

Dark blue cheekpads coolmax

For Odyssey, RKT2000

86-96065-60	2XS	(D)
86-96065-61	XS	(D)
86-96065-62	S	(D)
86-96065-63	M	(D)
86-96065-64	L	(D)
86-96065-65	XL	(D)
86-96065-66	2XL	(D)
86-96065-67	3XL	(D)

ZOX MX HELMET PARTS & ACCESSORIES - MATRIX



MX Visor with visor Xtender system

86-96037-38	Thrust - Blue	(D)
86-96037-42	Thrust - Yellow	(D)
86-95148	Airfight - Silver	(D)
86-96037-30	Serial Killer - Red	(T)



2

MX Mouth Pieces, Complete with Grill

86-95128-11	Matte Black	(D)
86-95128-12	White	(D)



7

Top liner Coolmax

86-96052-11	XS	(D)
86-96052-12	S	(D)
86-96052-14	L	(D)
86-96052-15	XL	(D)
86-96052-16	2XL	(D)
86-96052-17	3XL	(D)



3

Top vent

86-95106-52	White	(D)
-------------	-------	-----



8

Cheekpads coolmax

86-96053-53	S	(D)
86-96053-54	M	(D)
86-96053-55	L	(D)
86-96053-56	XL	(D)
86-96053-57	2XL	(D)



4

Rear vent set of 2

86-95106-67	Glossy black	(D)	pr
86-95106-69	White	(D)	pr



5

Rear top fins Large (L to 4XL)

86-95106-65	White	(D)
-------------	-------	-----



9

Set of 2 side covers Large (L to 4XL)

86-96054-01	Glossy White	(D)
-------------	--------------	-----



Small (2XS to M)

86-95206-64	Matte black	(D)
86-95206-65	White	(D)

Small (2XS to M)

86-96054-05	Glossy White	(D)
86-96054-08	Matte Black	(D)



6

Lower, rear collar exhaust vents aid Large (L to 4XL)

86-95106-71	Matte black	(D)
86-95106-73	White	(D)

Small (2XS to M)

86-95206-71	Matte black	(D)
86-95206-73	White	(D)



10

MX Breath Guard

86-95097	MX Face Mask	(D)
----------	--------------	-----



Replacement visor extension

86-96038	Replacement visor extension Dark Smoke	(D)
86-96200	Screw for extension	(D)



86-96039



86-96140



86-96142

MX visor Screw with allen key

86-96140	Silver	(D)
86-96039	Black	(D)
86-96139	Dark Silver	(D)
86-96142	Screw for MX Helmet Visor	(D) pr

ZOX MX HELMET PARTS & ACCESSORIES - ROOST X, FORZA & AIR ATTACK



1

Motocross visor with no extension

For Roost X et Forza helmets

86-95129	Solid	Glossy Black	(D)
86-95130	Solid	Matte Black	(D)
86-95115	Solid	Camo	(T)
86-95137	Hi-Flow	Red	(T)
86-95138	Hi-Flow	Blue	(T)
86-95120	Tribe II	Matte Yellow	(T)
86-95121	Tribe II	Matte Green	(T)
86-95122	Tribe II	Matte Pink	(T)
86-95112	Tribe II	Glossy Yellow	(T)
86-95115-01	Sand	Camo	(T)
86-95115-02	Siberrior	Camo	(T)
86-95115-03	Generic	Camo	(T)
86-95115-04	Sand	Black	(T)
86-95132	Wildflower	Pink Black	(T)
86-95134	Wildflower	Blue	(T)
86-95139	Wildflower	Pink White	(T)
86-95126	Mad	Red / Black	(T)
86-95117	Flame	Dark Silver / Blue	(T)
86-95141	Fling	Blue	(T)



Visor with xtender system

For Air Attack helmets. Also fits Roost X, Forza and Momentum Race helmets

86-96037-02	Mechanicalamity	Matte Black/Blue	(T)
86-96037-03	Mechanicalamity	Matte Dark Silver/Blue	(T)
86-96037-11	Blaze	Matte Blue	(T)
86-96037-12	Blaze	Glossy Silver Black	(T)
86-96037-13	Blaze	Glossy Red	(T)
86-96037-14	Blaze	Glossy Blue	(T)
86-96037-15	Blaze	Glossy White Grey	(T)
86-96037-20	Momentum Race	Orange	(T)

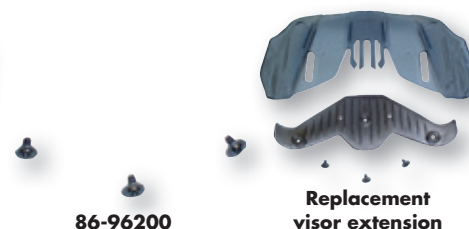


Visor with solid colored

Xtender system (Universal application)

Fits Zox helmets: Roost X, Forza, Air Attack, Momentum Race & Matrix.

86-96037-90	Glossy Black	(D)
-------------	--------------	-----



Replacement Visor Extension

Change or improve your existing visor for Roost X, Forza and Air Attack helmets.

86-96038	Replacement visor extension	Dark Smoke	(D)
86-96200	Screw for extension		(D)



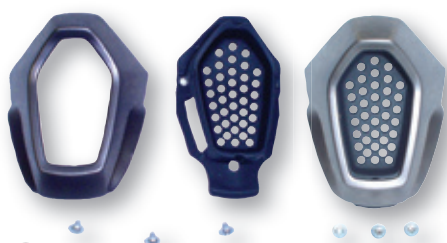
MX visor Screw with allen key

For Roost X, Forza and Air Attack helmets.

86-96039	MX peak screw, black	(D)
86-96139	Dark silver washer with screw for roost visor	(D)
86-96140	MX peak screw, chrome	(D)
86-96142	Peak screw, silver	(D)

ZOX MX HELMET PARTS & ACCESSORIES

ROOST X, FORZA, AIR ATTACK & STADIUM MX

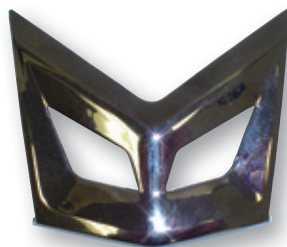


2

MX Mouth Pieces, Complete with Grill

For Roost X / Forza / Air Attack helmets.

86-95128-02	Glossy Black chrome	(D)
86-95128-03	Glossy Silver chrome	(D)
86-95128-04	Matte Black chrome	(D)
86-95128-05	Matte Silver chrome	(D)
86-95128-07	Camo	(T)
86-95128-08	Matte Black	(D)



Central top fins

For Forza / Air Attack helmets.

86-96001	Glossy Black chrome	(D)
86-96002	Glossy Silver chrome	(D)
86-96003	Matte Black chrome	(D)
86-96004	Matte Silver chrome	(D)



6

Black cheekpads coolmax

For Roost X, Forza, Air Attack helmets.
Set of 2 Cheek Pads

86-96053-43	2XS	(D)
86-96053-41	XS	(D)
86-96053-39	S	(D)
86-96053-37	M	(D)
86-96053-35	L	(D)
86-96053-33	XL	(D)
86-96053-31	2XL	(D)



3

Top Rear stabilizer air exhaust fins

For Forza, Air Attack helmets.
Size: 2XS, XS, S, M

86-95094-10	Wildflower Matte Pink	(D)
86-95094-11	Wildflower Matte Red	(T)
86-95094-12	Wildflower Matte Blue	(T)
86-96094-13	Blaze Matte Red	(T)
86-96094-14	Blaze Matte Blue	(T)
86-96094-15	Blaze Matte Silver Black	(T)
86-96094-16	Blaze Glossy Red	(T)
86-96094-17	Blaze Glossy Blue	(T)

For Forza, Air Attack helmets.
Size: L /XL/2XL

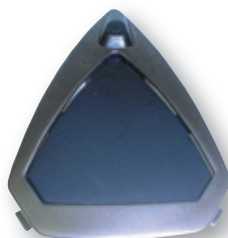
86-96095-30	Wildflower Matte Pink	(T)
86-96095-31	Wildflower Matte red	(T)
86-96095-32	Wildflower Matte blue	(T)
86-96095-33	Blaze Matte red	(T)
86-96095-34	Blaze Matte blue	(T)
86-96095-35	Blaze Matte Silver Black	(T)
86-96095-36	Blaze Glossy red	(T)
86-96095-37	Blaze Glossy blue	(T)
86-96095-42	Mechanicalamity Matte Dark Silver/Red	(T)
86-96095-43	Mechanicalamity Matte Dark Silver/Blue	(T)
86-96095-44	Mechanicalamity Matte Dark Black/Red	(T)
86-96095-45	Mechanicalamity Matte Dark Black/Blue	(T)
86-96095-47	Hi-Flow Glossy Silver Black	(T)
86-96095-48	Hi-Flow Glossy Blue	(T)
86-96095-49	Hi-Flow Glossy Red	(T)
86-96095-46	Silver/Blue Mechanicalamity	(T)
86-96095-39	Black Sharp	(T)
86-96095-40	Red Sharp	(T)
86-96095-41	Blue Sharp	(T)



Top rear vent cover set of 2

For Roost X, Tavani R/S helmets.

86-96001-01	Rear Set Vent Cover - Black	(D)
-------------	-----------------------------	-----



4

Top Vent

For Roost X /Forza /Air Attack helmets.

86-95106-03	Glossy black Chrome	(D)
86-95106-06	Matte Silver Chrome	(D)



Top vent central

86-95106-02	Matte black	(D)
-------------	-------------	-----



5

MX Breath Guard

For Roost X, Forza, Air Attack helmets.

86-95097	MX Face Mask	(D)
----------	--------------	-----

For Stadium MX helmets.

86-94042	MX Face Mask	(D)
----------	--------------	-----



7

Black Top Liner Coolmax

For Roost X, Forza, Air Attack helmets.

86-96052-00	2XS	(D)
86-96052-01	XS	(D)
86-96052-02	S	(D)
86-96052-03	M	(D)
86-96052-04	L	(D)
86-96052-05	XL	(D)
86-96052-06	2XL	(D)

ZOX® HELMET SPARE PARTS & ACCESSORIES

SAVO, MAGNUM, THUNDER, SPECTRA R, ALTO, COLLI



3 snap visor

For Alto & Banos helmet

86-90001	Black Visor	(V)
86-90012	Glossy short Visor	(D)
86-90011	Matte short Visor	(D)
86-90016	Carbon Fiber Look	(D)



86-93506

Ratchet kit

For Azuma, Magnum, Nevado, Savo jr, Spectra R & Tavani helmets

86-93506	Ratchet kit	(D)
86-9507	Screw for ratchet kit	(D) ea
86-93507	Screw for ratchet kit (4pcs)	(D)



Colli accessories 3-Snap

Visor for open face helmets

86-90003	Black	(V)
86-90004	Smoke	(V)
86-90010	Camo	(T)



86-90013

Ratchet kit

For Kaba, Bino and Urban Rider helmets

86-90013	Ratchet kit	(D)
86-9507	Screw for ratchet kit	(D) ea
86-93507	Screw for ratchet kit (4pcs)	(D)



Danan junior visor

For Danan junior helmet

86-92001	Black	(D)
-----------------	-------	-----



Kaba peak

86-90006	Black	(D)
-----------------	-------	-----



Full Face and MX pouch

86-93208	Black	(D)
-----------------	-------	-----



Half helmet and open face pouch

86-93209	Black	(D)
-----------------	-------	-----

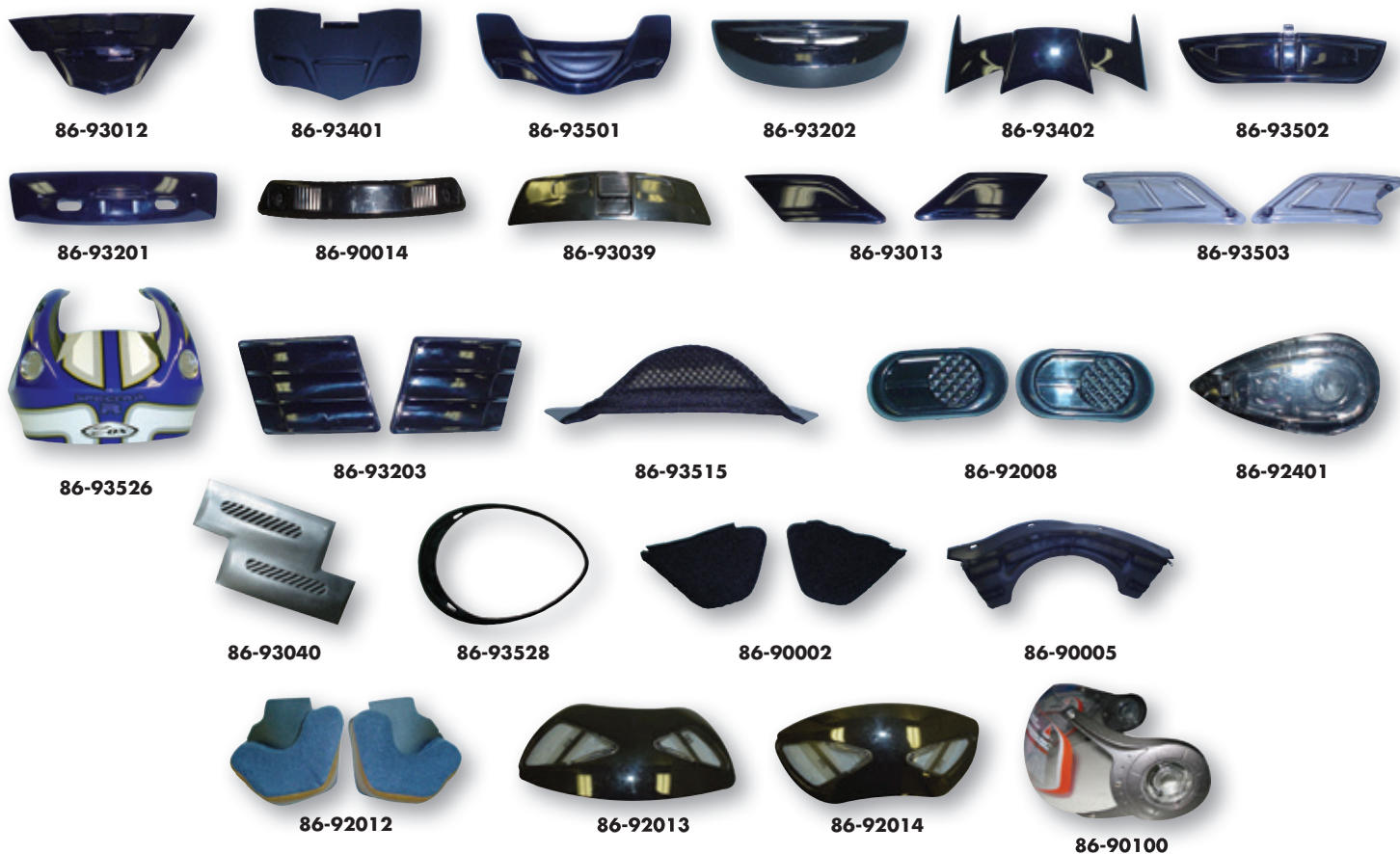


Wind curtain

For Banos

86-90005	Black	(D)
-----------------	-------	-----

ZOX® HELMET SPARE PARTS



Spectra R Full Face Helmet

86-93501	Forehead vent Black	(T)
86-93502	Mouth vent	(T)
86-93503	Lateral air vent	(T)
86-93506	Ratchet kit	(V)
86-93507	Ratchet screws (4 pk)	(D)
86-93509	Sil Mouth vent	(D)
86-93518	Spectra Top Vent Matte Black	(D)
86-93519	Spectra Top Vent Red	(D)
86-93520	Spectra Top Vent Blue	(D)
86-93522	Spectra Top Vent Matte Black GRP	(D)
86-93523	Spectra Top Vent Matte Blue GRP	(D)
86-93524	Spectra Top Vent Matte Red GRP	(D)
86-93526	Spectra Top Vent Glossy Blue GRP	(D)
86-93527	Spectra Top Vent Glossy Red GRP	(D)
86-93103	Snow breath deflector	(D)
86-93515	Chin guard	(D)

Azuma Street & Snow

86-93012	Mouth vent	(D)
86-93013	Cheek vent	(D)
86-93401	Forehead vent	(T)
86-93402	Rear vent	(T)
86-93506	Ratchet kit	(V)
86-93507	Ratchet screws (4pcs)	(D)
86-93103	Azuma snow deflector	(D)
01-540	Balaclava	(D)
86-93515	Chin guard	(D)

Magnum street & snow Full Face Helmet

86-93103	Snow breath deflector	(D)
01-540	Balaclava	(D)
86-93515	Chin guard	(D)
86-93514	Mouth vent	(T)
86-95004	Rear vent	(T)
86-93113	Cheek vent (pair)	(D)
86-93506	Ratchet kit	(V)
86-93507	Ratchet screws (4pcs)	(D)
86-93530	Liner 3XL	(D)
86-93531	Liner 4XL	(D)
86-93532	Liner 5XL	(D)

Full Face Helmet, Thunder S, Thunder R MP3

86-93012	Mouth vent	(D)
86-93013	Cheek vent (pair)	(D)
86-93014	Street breath deflector	(D)
86-93011	Top vent (Pr.) Black	(D)
86-93015	Top Vent (Pr) Red	(D)
86-93017	Top Vent (Pr) Silver	(D)
86-93018	Top Vent (Pr) Black Graphic	(D)
86-93019	Top Vent (Pr) Blue Graphic	(D)
86-93020	Top Vent (Pr) Red Graphic	(D)
86-93021	Top Vent (Pr) Yellow Graphic	(D)
86-93022	Top Vent (Pr) Green Graphic	(D)
86-93506	Ratchet kit	(V)
86-93507	Ratchet screws (4 pk)	(D)
86-93528	Thunder bottom rim	(D)
86-30091	Thunder liner XS	(T)
86-30095	Thunder liner XL	(T)
86-30096	Thunder liner 2XL	(T)
86-30097	Thunder liner 3XL	(T)

Full Face Savo Jr Street & Snow

86-93201	Forehead vent	(D)
86-93201-01	New Forehead vent	(T)
86-93202	Mouth vent	(D)
86-93202-01	New Mouth vent	(T)
86-93203	Rear vent	(D)
86-93506	Ratchet Kit	(V)
86-93507	Ratchet screws (4pcs)	(D)
86-32091	Savo Jr. Liner S	(D)
86-32092	Savo Jr. Liner M	(D)
86-32093	Savo Jr. Liner L	(D)
86-93204	Savo Jr. Loose screw red fin	(T)
86-93205	Savo Jr. Loose screw dark silver fin	(T)
86-93206	Savo Jr. Loose screw blue fin	(T)
86-93207	Savo Jr. Loose screw pink fin	(T)
86-92006	Double lens shield	(V)
86-93102	Electric shield	(V)
86-93103	Breath deflector	(V)
01-540	Balaclava	(D)

Bino Scooter

86-92012	Bino EAR PAD	(D)
86-92013	Bino Top Vent (Left)	(D)
86-92014	Bino Top Vent (Right)	(T)

Bino II Scooter

86-92022	Liner XS	(T)
86-92023	Liner S	(T)
86-92024	Liner M	(T)
86-92025	Liner L	(T)
86-92026	Liner XL	(T)
86-92027	Liner 2XL	(T)

Open Face Colli

86-90003	3-snap visor - black	(V)
86-90004	3-snap visor - smoke	(V)
86-90010	3-snap visor - camo	(T)
86-90001	3-snap shorty visor - black	(V)

Open Face Colli MX

86-90015	Colli camo mx visor	(T)
----------	---------------------	-----

Open Face Danan

86-92001	3-snap visor - black	(V)
----------	----------------------	-----

Open Face Kaba Street & Snow

86-90008	Smoke shield w/ ratchet	(V)
86-90009	Silver mirror shield w/ ratchet	(V)
86-93035	Clear shield without ratchet	(V)
86-93036	Smoke shield without ratchet	(V)
86-90013	Ratchet Kit	(D)
86-90006	Black peak	(D)
86-93039	Forehead vent	(V)
86-92004	Double visor	(V)
86-92007	Double electric visor	(V)
86-92009	Face mask	(D)
86-92005	Double electric visor for Vega vista xpv snow	(T)
86-22091	Kaba Liner - XS	(D)
86-22092	Kaba Liner - S	(D)
86-22093	Kaba Liner - M	(D)
86-22094	Kaba Liner - L	(D)
86-22095	Kaba Liner - XL	(D)
86-22096	Kaba Liner - 2XL	(D)

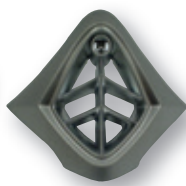
Open Face Urban rider

86-90008	Smoke shield w/ ratchet	(V)
86-90009	Silver mirror shield w/ ratchet	(V)
86-93035	Clear shield without ratchet	(V)
86-93036	Smoke shield without ratchet	(V)
86-90013	Ratchet Kit	(D)
86-93518	Urban Rider Top Vent Matte Black	(D)
86-93209	OF helmet bag	(D)

ZOX® & VEGA® HELMET SPARE PARTS



86-94009



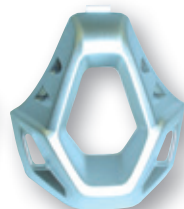
86-94306



86-94010



86-94015



86-94027



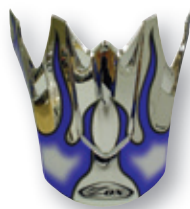
86-94021



86-94020



86-94022



86-94007



86-94310



86-94303



86-94107



86-94003



86-94013



86-94014



86-94011



86-96141



86-43091

Off-road helmets

Momentum R adults & teen

86-94305	Visor - Matte silver graphic Big Air	(T)
86-94308	Visor - blue graphic, Loose screws	(T)
86-94013	Visor Screw kit (3)	(D)
86-94311	Plastic visor screw (2)	(T)
86-94014	Visor central screw	(D)
86-94020	Side vent	(T)
86-94021	Top vent	(T)
86-94022	Rear vent	(T)
86-94306	Mouthpiece	(D)
86-94011	Deflector, MX Mask	(D)

Momentum R kids

86-94307	Visor - black graphic	(D)
86-94308	Visor - blue graphic	(D)
86-94309	Visor - red graphic	(D)
86-94310	Visor - Jeff 11 graphic	(D)
86-94013	Visor screw kit (3)	(D)
86-94024	Top Fin - black graphic	(T)
86-94028	Top Fin - blue graphic	(D)
86-94029	Top Fin - red graphic	(D)
86-94030	Top Fin - Jeff 11 graphic	(D)
86-94306	Mouthpiece	(D)

Roost Jr.

86-94004	Visor - yellow graphic	(D)
86-94101	Visor - matte black graphic	(T)
86-94104	Visor - matte yellow graphic	(T)
86-94105	Visor - matte green graphic	(T)
86-94013	Visor screw kit (3)	(D)
86-94014	Visor central screw	(D)
86-94016	Mouthpiece - chrome	(D)
86-94017	Mouthpiece - black	(T)
86-94046	Mouthpiece - Black Chrome	(D)
86-41091	Roost Jr. liner S	(D)
86-41092	Roost Jr. liner M	(D)
86-41093	Roost Jr. liner L	(D)
86-96207	Roost Jr. Cheek Pad S	(D)
86-96208	Roost Jr. Cheek Pad M	(D)
86-96209	Roost Jr. Cheek Pad L	(D)

Roost adult7

86-94004	Visor - yellow graphic	(T)
86-94006	Visor - camo	(T)
86-94101	Visor - Matte black graphic	(T)
86-94104	Visor - Matte yellow graphic	(T)
86-94105	Visor - Matte green graphic	(T)
86-94015	Mouthpiece Camo	(T)
86-94027	Mouthpiece Silver	(D)
86-94009	Mouthpiece Chrome	(D)
86-94010	Black mouthpiece	(T)
86-94011	Off Road breath deflector	(T)
86-94013	Visor screw kit (3)	(D)
86-96141	Folding Screw	(D)
86-94026	Matte chrome cheek vent (pr)	(D)
86-40091	Roost liner XS	(D)
86-40092	Roost liner S	(D)
86-40093	Roost liner M	(D)
86-40094	Roost liner L	(D)
86-40095	Roost liner XL	(D)
86-40096	Roost liner 2XL	(D)

Matrix

86-96037-30	Serial Killer	
	Peak Matte Red	(T)

Vega MX

80-92012	Mojave visor - blue graphic 2004	(T)
----------	----------------------------------	-----

Tavani snow Vega

86-93103	Snow breath deflector	(D)
86-93515	CH N CURTAIN	(D)
01-540	Balaclava	(D)

Nevado Street Flip-Up Helmet

86-95002	Side cover (pair)	(T)
86-95003	Mouth vent	(T)
86-95004	Rear vent	(T)
86-95006	Nevado nylon wing nut	(T)
86-95008	Summit bouton rouge de poussée	(T)
86-95009	Nevado side latch covers (pair)	(T)
86-93506	Ratchet kit	(D)
86-93507	Ratchet screws (4 pk)	(D)

Nevado Snow Vega

86-95005	Snow breath deflector	(T)
----------	-----------------------	-----

Replacement parts for Armada SVS

86-95102	Ratchet	(D)
86-93120	Sun Visor light smoke	(D)
86-93121	Sun Visor dark smoke	(D)
86-93117	Mouth vent	(D)
86-93118	Top Vent Slider (pr)	(D)
86-93123-1	Liner XS	(D)
86-93123-2	Liner S	(D)
86-93123-3	Liner M	(D)
86-93123-4	Liner L	(D)
86-93123-5	Liner XL	(D)
86-93123-6	Liner XXL	(D)
86-93124-1	Cheek Pad XS	(D)
86-93124-2	Cheek Pad S	(D)
86-93124-3	Cheek Pad M	(D)
86-93124-4	Cheek Pad L	(D)
86-93124-5	Cheek Pad XL	(D)
86-93124-6	Cheek Pad XXL	(D)
86-93122	Bottom Rim (Small XS-M)	(D)
86-93122-1	Bottom Rim (Large L-2XL)	(D)



NEW ZOX & XTREME PARTS LIST

Roadster / Alto DDV

88-90000	DDV Clear Shield Anti Scratch	(V)
88-90001	DDV Light Smoke Shield Anti Scratch	(V)
88-90002	DDV Dark Smoke Shield Anti Scratch	(V)
88-90003	DDV Yellow Shield Anti Scratch	(V)
88-90004	DDV Peak (Alto)	(V)
88-90005	DDV Screw Kit Short (Alto)	(V)
88-90008	DDV Screw Kit Long (Alto)	(V)
88-90009	Alto DDV Ear Protector	(V)
88-90142	Roadster Screw Kit	(V)
88-90004L	Roadster DDV Peak Large L-XI-2X(V)	(V)
88-90004S	Roadster DDV Peak Small Xs-S-M(V)	(V)
88-90009A	Ear Protector w/o velcro	(V)

Banos STG

88-90013	Banos STG Peak	(V)
88-90014	Banos STG Forehead Vent	(V)
88-90015	Banos STG Neck Curtain	(V)

Custom

88-90006	Custom Ear Protector	(V)
88-90007	Custom Peak Black	(V)
88-90006A	Custom Ear Protector w/o velcro	(V)

Jazz II

88-92001	Jazz II Clear Shield Anti Scratch	(V)
88-92003	Jazz II Dark Smoke Shield Anti Scratch	(V)
88-92002	Jazz II Light Smoke Shield Anti Scratch	(V)
88-92004	Jazz II Shield Screw Kit	(V)

Condor

88-96099	Condor Double Shield	(V)
88-96100	Condor Electric Shield	(V)
88-96101	Condor Clear Shield Anti Scratch	(V)
88-96102	Condor Light Smoke Shield Anti Scratch	(V)
88-96103	Condor Dark Smoke Shield Anti Scratch	(V)
88-96104	Condor Clear Shield Anti Fog	(V)
88-96105	Condor Shield Ratchet Kit	(V)
88-96106	Condor Svs Lightsmoke Shield Anti Scratch	(T)
88-96107	Condor Svs Darksmoke Shield Anti Scratch	(T)
88-96108	Condor Svs Amber Shield Anti Scratch	(T)
88-96109	Condor Top Front Vent Kit White	(V)
88-96110	Condor Top Front Vent Kit Black	(V)
88-96111	Condor Rear Vent White	(V)
88-96112	Condor Rear Vent Black	(V)
88-96113	Condor Mouth Vent Kit White	(V)
88-96114	Condor Mouth Vent Kit Black	(V)
88-96116	Condor Liner Xs	(V)
88-96117	Condor Liner S	(V)
88-96118	Condor Liner M	(V)
88-96119	Condor Liner L	(V)
88-96120	Condor Liner XI	(V)
88-96121	Condor Liner 2XI	(V)
88-96122	Condor Liner 3XI	(V)
88-96124	Condor Cheek Pad Xs	(V)
88-96125	Condor Cheek Pad S	(V)
88-96126	Condor Cheek Pad M	(V)
88-96127	Condor Cheek Pad L	(V)
88-96128	Condor Cheek Pad XI	(V)
88-96129	Condor Cheek Pad 2XI	(V)
88-96130	Condor Cheek Pad 3XI	(V)
88-96097	Condor Snow Breath Guard	(V)
88-96096	Condor Snow Chin Guard	(V)
88-96095	Condor Summer Chin Guard	(V)

Brigade

88-96070	Brigade Clear Shield Anti Scratch	(V)
88-96073	Brigade Clear Shield Antifog	(V)
88-96072	Brigade Dark Smoke Shield Anti Scratch	(V)
88-96071	Brigade Light Smoke Shield Anti Scratch	(V)
88-96081	Brigade Mirror Blue Shield Anti Scratch	(V)

88-96079	Brigade Mirror Chrome Shield Anti Scratch	(V)
88-96082	Brigade Mirror Gold Shield Anti Scratch	(V)
88-95102	Brigade Shield Ratchet Kit	(V)
88-96083	Ff/Flip-Up Injected Double Shield STG	(V)
88-96084	Ff/Flip-Up Injected Electric Shield STG	(V)
88-93123	Brigade Svs Svs Amber Anti Scratch	(V)
88-93121	Brigade Svs Svs Dark Smoke Anti Scratch	(V)
88-93120	Brigade Svs Light Smoke Anti Scratch	(V)
88-93122	Brigade Svs Svs Yellow Anti Scratch	(V)
88-96048	Brigade Side Mount Screws 15Mm	(V)
88-96050	Brigade Side Mount Washers	(V)

Brigade (cont.)

88-96150	Brigade Top Vent Kit Black	(V)
88-96151	Brigade Rear Vent Kit Black	(V)
88-96152	Brigade Mouth Vent Kit Black	(V)
88-96153	Brigade Liner 2XI	(V)
88-96154	Brigade Liner 2Xs	(V)
88-96155	Brigade Liner 3XI	(V)
88-96156	Brigade Liner L	(V)
88-96157	Brigade Liner M	(V)
88-96158	Brigade Liner S	(V)
88-96159	Brigade Liner XI	(V)
88-96160	Brigade Liner Xs	(V)
88-96161	Brigade Cheek Pad 2XI	(V)
88-96162	Brigade Cheek Pad 2Xs	(V)
88-96163	Brigade Cheek Pad 3XI	(V)
88-96164	Brigade Cheek Pad L	(V)
88-96165	Brigade Cheek Pad M	(V)
88-96166	Brigade Cheek Pad S	(V)
88-96167	Brigade Cheek Pad XI	(V)
88-96168	Brigade Cheek Pad Xs	(V)
88-93105	Electric Shield Cord Kit STG	(V)

Primo / Kanaga To-831

88-96070	Primo Clear Shield Anti Scratch	(V)
88-96073	Primo Clear Shield Antifog	(V)
88-96072	Primo Dark Smoke Shield Anti Scratch	(V)
88-96071	Primo Light Smoke Shield Anti Scratch	(V)
88-96081	Primo Mirror Blue Shield Anti Scratch	(V)
88-96079	Primo Mirror Chrome Shield Anti Scratch	(V)
88-96082	Primo Mirror Gold Shield Anti Scratch	(V)
88-95102	Primo Shield Ratchet Kit	(V)
88-96083	Ff/Flip-Up Injected Double Shield STG	(V)
88-96084	Ff/Flip-Up Injected Electric Shield STG	(V)
88-93123	Primo Svs Svs Amber Anti Scratch	(V)
88-93121	Primo Svs Svs Dark Smoke Anti Scratch	(V)
88-93120	Primo Svs Light Smoke Anti Scratch	(V)
88-93122	Primo Svs Svs Yellow Anti Scratch	(V)
88-90075	Primo Cheek Pad 2XI	(V)
88-90069	Primo Cheek Pad 2Xs	(V)
88-90076	Primo Cheek Pad 3XI	(V)
88-90073	Primo Cheek Pad L	(V)
88-90072	Primo Cheek Pad M	(V)
88-90071	Primo Cheek Pad S	(V)
88-90074	Primo Cheek Pad XI	(V)
88-90070	Primo Cheek Pad Xs	(V)
88-96098	Primo Com Chin Guard	(V)
88-90051	Primo Liner 2XI	(V)
88-90045	Primo Liner 2Xs	(V)
88-90052	Primo Liner 3XI	(V)
88-90049	Primo Liner L	(V)
88-90048	Primo Liner M	(V)
88-90047	Primo Liner S	(V)
88-90050	Primo Liner XI	(V)
88-90046	Primo Liner Xs	(V)
88-90035	Primo Mouth Vent Kit Black	(V)
88-90036	Primo Mouth Vent Kit Titanium	(V)
88-90038	Primo Mouth Vent Screw	(V)

88-90039	Primo Rear Vent Black	(V)
88-90118	Primo Rear Vent Plug	(V)
88-90041	Primo Rear Vent Screw	(V)
88-90040	Primo Rear Vent Titanium	(V)
88-96085	Primo Snow Breath Guard Metal Clip	(V)
88-96086	Primo Snow Chin Guard Plastic Clip	(V)
88-90126	Primo Svs Cheek Pad 2XI	(V)
88-90120	Primo Svs Cheek Pad 2Xs	(V)
88-90124	Primo Svs Cheek Pad L	(V)
88-90123	Primo Svs Cheek Pad M	(V)
88-90122	Primo Svs Cheek Pad S	(V)
88-90125	Primo Svs Cheek Pad XI	(V)
88-90121	Primo Svs Cheek Pad Xs	(V)
88-90042	Primo Top Vent Kit Black	(V)
88-90043	Primo Top Vent Kit Titanium	(V)
88-96060	Primo/Thun CH N CURTAIN Metal Clip	(V)
88-96061	Primo/Thun CH N CURTAIN Plastic Clip	(V)
88-93105	Electric Shield Cord Kit STG	(V)

Thunder 2 To-831

88-96060	Thunder2 CH N CURTAIN Metal Clip	(V)
88-96061	Thunder2 CH N CURTAIN Plastic Clip	(V)
88-93105	Thunder2 Electric Shield Cord Kit	(V)
88-90134	Thunder2 Cheek Pad 2xl	(V)
88-90128	Thunder2 Cheek Pad 2xs	(V)
88-90135	Thunder2 Cheek Pad 3XI	(V)
88-90132	Thunder2 Cheek Pad L	(V)
88-90131	Thunder2 Cheek Pad M	(V)
88-90130	Thunder2 Cheek Pad S	(V)
88-90133	Thunder2 Cheek Pad XI	(V)
88-90129	Thunder2 Cheek Pad Xs	(V)
88-90136	Thunder2 Mouth Vent Kit Black	(V)
88-90137	Thunder2 Mouth Vent Kit Titanium	(V)
88-90138	Thunder2 Rear Vent Black	(V)
88-90139	Thunder2 Rear Vent Titanium	(V)
88-90140	Thunder2 Top Vent Kit Black	(V)
88-90141	Thunder2 Top Vent Kit Titanium	(V)
88-96060	Thunder2 CH N CURTAIN Metal Clip	(V)
88-96061	Thunder2 CH N CURTAIN Plastic Clip	(V)

Thunder 2 To-831 (cont.)

88-93105	Thunder2 Electric Shield Cord Kit	(V)
88-96085	Thunder2 Snow Breath Guard Metal Clip	(V)
88-96086	Thunder2 Snow Chin Guard	(V)
88-96070	Clear Shield Anti Scratch	(V)
88-96073	Clear Shield Antifog	(V)
88-96072	Dark Smoke Shield Anti Scratch	(V)
88-96071	Light Smoke Shield Anti Scratch	(V)
88-96081	Mirror Blue Shield Anti Scratch	(V)
88-96079	Mirror Chrome Shield Anti Scratch	(V)
88-96082	Mirror Gold Shield Anti Scratch	(V)
88-95102	Thunder2 Shield Ratchet Kit	(V)
88-96083	Thunder2 Double Shield STG	(V)
88-96084	Thunder2 Electric Shield STG	(V)
88-90075	Thunder2 Cheek Pad 2XI	(V)
88-90069	Thunder2 Cheek Pad 2Xs	(V)
88-90076	Thunder2 Cheek Pad 3XI	(V)
88-90072	Thunder2 Cheek Pad L	(V)
88-90071	Thunder2 Cheek Pad M	(V)
88-90074	Thunder2 Cheek Pad S	(V)
88-90070	Thunder2 Cheek Pad XI	(V)
88-90070	Thunder2 Cheek Pad Xs	(V)

Rush

88-96143	Rush Breath Guard Black	(V)
88-90019-70	Rush C Vertigo Peak Blk/Silver	(V)
88-90019-64	Rush C Vertigo Peak Blue	(V)
88-90019-65	Rush C Vertigo Peak Green	(V)
88-90019-67	Rush C Vertigo Peak Orange	(V)
88-90019-68	Rush C Vertigo Peak Pink	(V)
88-90019-63	Rush C Vertigo Peak Red	(V)
88-90019-69	Rush C Vertigo Peak Silver	(V)
88-90019-66	Rush C Vertigo Peak Yellow	(V)
88-90031	Rush C Warrior Peak Black Blue	(V)
88-90030	Rush C Warrior Peak Black Lime	(V)
88-92530	Rush Camo Mouth Vent	(V)
88-92529	Rush Camo Peak	(V)
88-90077	Rush Cheek Pad 2Xs	(V)



NEW ZOX & XTREME PARTS LIST

88-90081	Rush Cheek Pad L	(V)
88-90080	Rush Cheek Pad M	(V)
88-90079	Rush Cheek Pad S	(V)
88-90082	Rush Cheek Pad XI	(V)
88-90078	Rush Cheek Pad Xs	(V)
88-90022	Rush Fiction Peak Blue/Black	(V)
88-90026	Rush Fiction Peak Dark Silver/White(V)	
88-90023	Rush Fiction Peak Green/Blk	(V)
88-90028	Rush Fiction Peak Mat Blue/Blk	(V)
88-90027	Rush Fiction Peak Mat Red/Blk	(V)
88-90025	Rush Fiction Peak Oran/ Black	(V)
88-90029	Rush Fiction Peak Pink/Blk	(V)
88-90021	Rush Fiction Peak Red/Black	(V)
88-90020	Rush Fiction Peak Sil/Blk	(V)
88-90024	Rush Fiction Peak Yell/Black	(V)
88-90115	Rush Jr Fiction Peak Black	(V)
88-90113	Rush Jr Fiction Peak Blue	(V)
88-90019-4	Rush Jr Fiction Peak Blue/Black	(V)
88-90019-9	Rush Jr Fiction Peak D Silver/White(V)	
88-90019-5	Rush Jr Fiction Peak Green/Black(V)	
88-90019-7	Rush Jr Fiction Peak Orange/Black(V)	
88-90114	Rush Jr Fiction Peak Pink	(V)
88-90019-8	Rush Jr Fiction Peak Pink/Black	(V)
88-90112	Rush Jr Fiction Peak Red	(V)
88-90019-3	Rush Jr Fiction Peak Red/Black	(V)
88-90111	Rush Jr Fiction Peak Silver	(V)
88-90019-6	Rush Jr Fiction Peak Yellow/Black(V)	
88-90019-15	Rush Jr King Pin Peak Blue	(V)
88-90019-14	Rush Jr King Pin Peak Red	(V)
88-90019-13	Rush Jr King Pin Peak Silver	(V)
Rush (cont.)		
88-90019-1	Rush Jr Peak Black	(V)
88-90019-24	Rush Jr Star Peak Blue	(V)
88-90019-28	Rush Jr Star Peak Green	(V)
88-90019-29	Rush Jr Star Peak Orange	(V)
88-90019-26	Rush Jr Star Peak Pink	(V)
88-90019-23	Rush Jr Star Peak Red	(V)
88-90019-27	Rush Jr Star Peak Silver	(V)
88-90019-25	Rush Jr Star Peak Yellow	(V)
88-90019-57	Rush Jr Taiga Peak Blue	(V)
88-90019-58	Rush Jr Taiga Peak Green	(V)
88-90019-60	Rush Jr Taiga Peak Orange	(V)
88-90019-61	Rush Jr Taiga Peak Pink	(V)
88-90019-56	Rush Jr Taiga Peak Red	(V)

88-90019-62	Rush Jr Taiga Peak Silver	(V)
88-90019-59	Rush Jr Taiga Peak Yellow	(V)
88-90019-48	Rush Jr X-Terminator Peak Blue	(V)
88-90019-44	Rush Jr X-Terminator Peak Green(V)	
88-90019-45	Rush Jr X-Terminator Peak Pink	(V)
88-90019-46	Rush Jr X-Terminator Peak Red	(V)
88-90019-47	Rush Jr X-Terminator Peak Silver	(V)
88-90019-11	Rush King Pin Peak Red	(V)
88-90019-10	Rush King Pin Peak Silver	(V)
88-90059	Rush Liner 2XI	(V)
88-90053	Rush Liner 2Xs	(V)
88-90060	Rush Liner 3XI	(V)
88-90057	Rush Liner L	(V)
88-90056	Rush Liner M	(V)
88-90055	Rush Liner S	(V)
88-90058	Rush Liner XI	(V)
88-90054	Rush Liner Xs	(V)
88-96140	Rush Mouth Pieces Titanium	(V)
88-90011	Rush Peak Glossy Black	(V)
88-90010	Rush Peak Matte Black	(V)
88-96142	Rush Peak Screw Kit(3)	(V)
88-90019-17	Rush Stadium Mx2 Peak Blue	(V)
88-90019-19	Rush Stadium Mx2 Peak Orange	(V)
88-90019-16	Rush Stadium Mx2 Peak Red	(V)
88-90019-18	Rush Stadium Mx2 Peak Silver	(V)
88-90019-31	Rush Star Peak Blue	(V)
88-90019-34	Rush Star Peak Dark Silver	(V)
88-90019-35	Rush Star Peak Green	(V)
88-90019-36	Rush Star Peak Orange	(V)
88-90019-33	Rush Star Peak Pink	(V)
Rush (cont.)		
88-90019-30	Rush Star Peak Red	(V)
88-90019-32	Rush Star Peak Yellow	(V)
88-90019-51	Rush Taiga Peak Green	(V)
88-90019-53	Rush Taiga Peak Orange	(V)
88-90019-54	Rush Taiga Peak Pink	(V)
88-90019-49	Rush Taiga Peak Red	(V)
88-90019-55	Rush Taiga Peak Silver	(V)
88-90019-52	Rush Taiga Peak Yellow	(V)
88-90019-50	Rush Taiga Peak Blue	(V)
88-90019-39	Rush Voodoo Peak Blue	(V)
88-90019-40	Rush Voodoo Peak Red	(V)
88-90019-37	Rush Voodoo Peak Red/Blue	(V)
88-90019-38	Rush Voodoo Peak Silver	(V)

Extreme Exceed

88-90033	Extreme Razor Peak Blue/White	(T)
88-96142	Extreme Peak Screw Kit(3)	(V)

Rush Sx / Rx

88-92518	Rush Rx/Fx Shield Clear Anti Scratch	(V)
88-92519	Rush Rx/Fx Shield Smoke Anti Scratch	(V)
88-96087	Rush Fx/Rx Double Lens Snow Shield	(V)
88-96088	Rush Fx/Rx Electric Snow Shield	(V)
88-90019-43	Rush Fx Peak Anthracite L-XI	(V)
88-90019-43A	Rush Fx Peak Anthracite S-M	(V)
88-90019-41	Rush Fx Peak Gloss Black L-XI	(V)
88-90019-41A	Rush Fx Peak Gloss Black S-M	(V)
88-90019-42	Rush Fx Peak Matte Black L-XI	(V)
88-90019-42A	Rush Fx Peak Matte Black S-M	(V)
88-90019-20	Rush Rx Fusion Peak Black	(V)
88-90019-21	Rush Rx Fusion Peak Orange	(V)
88-90019-22	Rush Rx Fusion Peak Silver/White(V)	
88-92523	Rush Rx Peak Silver	(V)
88-92524	Rush Rx Peak White	(V)
88-92522	Rush Rx Black Peak	(V)
88-92526	Rush Rx Matte Black Peak	(V)
88-92525	Rush Rx Yellow Peak	(V)
88-90109	Rush Rx/Fx Cheek Pad 2XI	(V)
88-90103	Rush Rx/Fx Cheek Pad 2Xs	(V)
88-90110	Rush Rx/Fx Cheek Pad 3XI	(V)
88-90107	Rush Rx/Fx Cheek Pad L	(V)
88-90106	Rush Rx/Fx Cheek Pad M	(V)
88-90105	Rush Rx/Fx Cheek Pad S	(V)

Rush Sx / Rx (cont.)

88-90108	Rush Rx/Fx Cheek Pad XI	(V)
88-90104	Rush Rx/Fx Cheek Pad Xs	(V)
88-96091	Rush Rx/Fx CHIN CURTA N	(V)
88-90101	Rush Rx/Fx Liner 2XI	(V)
88-90095	Rush Rx/Fx Liner 2Xs	(V)
88-90099	Rush Rx/Fx Liner L	(V)
88-90098	Rush Rx/Fx Liner M	(V)
88-90097	Rush Rx/Fx Liner S	(V)
88-90100	Rush Rx/Fx Liner XI	(V)
88-90096	Rush Rx/Fx Liner Xs	(V)
88-96141	Rush Rx/Fx Front Vent Black	(V)
88-90119	Rush Rx/Fx Rear Vent Plug	(V)
88-92527	Rush Rx/Fx Screw (3) Kit	(V)
88-96144	Rush Rx/Fx Screw (6) Kit	(V)
88-92528	Rush Rx/Fx Side Plate Kit Black	(V)
88-92537	Rush Rx/Fx Side Plate Kit Black	(V)
88-92535	Rush Rx/Fx Side Plate Kit Orange(V)	
88-92536	Rush Rx/Fx Side Plate Kit Silver	(V)
88-92534	Rush Rx/Fx Side Plate Kit White	(V)
88-96089	Rush Rx/Fx Snow Breath Guard	(V)
88-96090	Rush Rx/Fx Snow CHIN CURTA N(V)	
88-96149	Rush Rx/Fx Top Vent Black	(V)

Sierra

88-96035	Sierra Shield Clear Anti Scratch	(V)
88-96036	Sierra Shield Dark Smoke Anti Scratch	(V)
88-96045	Sierra Shield Double	(V)
88-96046	Sierra Shield Electric	(V)
88-93125	Svs Amber Shield Anti Fog	(V)
88-93124	Svs Darksmoke Shield Anti Fog	(V)
88-93123	Svs Amber Anti Scratch	(V)
88-93121	Svs Dark Smoke Anti Scratch	(V)
88-93120	Svs Light Smoke Anti Scratch	(V)
88-93122	Svs Yellow Anti Scratch	(V)
88-96037	Sierra Peak Black	(V)
88-96047	Sierra Peak Matte Black	(V)
88-96043	Sierra Peak Silver	(V)
88-96044	Sierra Peak Titanium	(V)
88-96041	Sierra Peak Yellow	(V)
88-96042	Ratchet Screw Kit	(V)
88-92110	Sierra Snow Mask	(V)
88-96048	Sierra/Brigade Side Mount Screws 15Mm	(V)
88-96049	Sierra Side Mount Screws 20Mm	(V)
88-96050	Sierra Side Mount Washers	(V)

ACCESSORIES FOR MAGNUM SNOW



Dual lens shield

Lexan™ shield decreases fogging for cold weather snowmobiling.

86-93506	Ratchet kit	(V)
86-93101	Double shield	(V)



Snow Replacement Visor

For Helmets: Azuma, Magnum, Nevado, Spectra R, Thunder & Savo jr.

*The best solution to fogging for cold conditions. Includes shield and control cord for connecting to sled. Without ratchet.

86-93102	Double Electric shield	(V)
-----------------	------------------------	-----

Snow Replacement Parts

Hi-Quest S, Genesis S, Tavani S, S2, Supercomp S & Nevado S, S2

*Fits on 86-92007 (modèle 2009), 86-93102 (Modèle 2009), 86-95211 & 86-95081

88-93105		(V)
-----------------	--	-----



Snow Replacement Parts

Breath deflector directs exhaled breath away from shield, further reducing fogging.

86-93103		(V)
-----------------	--	-----



Balaclava

Knitted cotton balaclava provides added warmth when worn inside helmet.

01-540		(D)
---------------	--	-----

ZOX SNOW NEW GENERATION PARTS & ACCESSORIES



88-96099



88-96600

Deluxe snow shield

For Condor SVS Snow

88-96099	Double Shield	(V)
88-96100	Electric Shield	(V)



Fits Sierra, Sierra SVS

88-96045	Double shield	(V)
88-96046	Electric shield with LED lamp	(V)



Deluxe snow shield double W/black frame

Hi-Quest S, Genesis S, Tanavi S, Supercomp S & Nevado S, Armada
With 3mm Shield and black frame

86-95098	Double shield W/black frame	(D)
86-95099	Double shield dark silver frame	(D)
86-95107-1	Frame cover only	(D)



Dual electric shield

For Helmets: Azuma, Magnum, Spectra R, Thunder, Savo jr, fits Vega Altura

The best solution to fogging for cold conditions. Includes shield and control cord for connecting to sled.

86-93102	Double electric shield	(V)
----------	------------------------	-----



Double shield



Electric shield

Shield and replacement accessories

Fits on Primo Air, C, Comp, Lite R, SVS et Thunder R2, Brigade et Brigade COM.

88-96083	Double shield Anti-scratch	(V)
88-96084*	Electric shield Anti-scratch with LED lamp	(V)
88-93105	Control Cord Kit (4 pcs)	(V)
88-95203	Male plug cable	(V)
88-95204	Spiral Coil cable	(V)
88-95205	Battery Cable comm	(V)
88-95206	Clip	(V)



Electric shield

Shield Ebeko, Ebeko SVS

86-92064	Double shield	(V)
86-92065	Electric shield	(V)

Deluxe snow shield

For Savo G2

86-92040	Double Shield	(V)
86-92041	Electric Shield	(V)



Dual lens shield

For Helmets: Azuma, Magnum, Spectra R, Thunder, fits Vega Altura

Lexan™ shield decreases fogging for cold weather snowmobiling.

86-93101	Double shield	(V)
----------	---------------	-----

For Savo jr

86-92006	Double shield	(D)
----------	---------------	-----



88-96088

Electric Shield Optional

Shield Rush RX, SX, SFX

88-96087	Double shield	(V)
88-96088	Electric shield	(V)
88-93105	Control Cord Kit (4 pcs)	(V)
88-95203	Male plug cable	(V)
88-95204	Spiral Coil cable	(V)
88-95205	Battery Cable comm	(V)
88-95206	Clip	(V)



Clear electric Shield

Fits on Etna S.

86-96046	With LED lamp	(D)
----------	---------------	-----

Fits on Etna S.

86-96045	Double shield	(D)
----------	---------------	-----



Electric & double shield with ratchet

For helmets: Kaba, Bino and Urban rider

86-92004	Double shield*	(V)
86-92007	Electric Double Shield*	(V)
86-90013	Ratchet kit for Kaba	(D)
86-92005	Electric Double Shield for Vega Vista	(D)
86-92000	Frame Only	(D)



Open face double 3-snap flip shield

Fits all open face helmets with three snaps. Double lens resists fogging. Tough polycarbonate construction. Ratchet-action pivots. Anti-glare visor.

86-92015	Clear lens	(V)
----------	------------	-----

CORD AND ACCESSORIES FOR ELECTRIC SHIELD



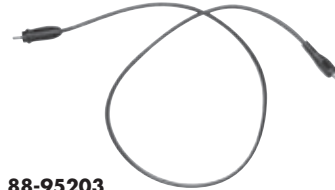
01-523



88-95205



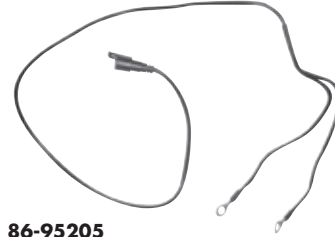
01-8919



88-95203



88-95204



86-95205



88-95206

Control cord with RC or DC plug

- Connects electric shield to sled.
- Available as replacement part. (for 86-93102 and 86-92005)

01-523	Control cord assembly with fuse box	(D)
01-8919	Spiral Coil cable	(D)
88-95205	Straight cord only with fuse box	(V)



01-8918



01-8925D

Dash mount machine cord

Mounts onto the dash of the snowmobile. Cover protects connection from snow and ice. Easily installed.

01-8918	Cable (B) Polaris	Plug w/cap	(D)
01-8925D	Plug for electric shield		(D)

"Turn lock " replacement electric shield cord with clip

Hi-Quest S, Genesis S, Tanavi S, S2, Etna, Supercomp S & Nevado S, S2, EBEKO, Primo, Primo SVS, Thunder, Sierra, Condor, Brigade

88-93105	Control Cord Kit (4 pcs)	(V)
88-95203	Male plug cable	(V)
88-95204	Spiral Coil cable	(V)
88-95205	Battery Cable comm with fuse	(V)
86-95205	Battery Cable comm without fuse	(V)
88-95206	Clip	(V)

Battery Adaptor

Cable kit for connection direct to battery.

317-9588	On-off switch	(B)
----------	---------------	-----



317-9588

UNIVERSAL RCA & DC LIGHTER SOCKET PLUGS

Fits many new ATV & Snowmobile with lighter adapter



RCA plug

01-525 RCA Plug (D)



RCA plug
RCA plug

01-556 2 RCA Plug (D)



RCA plug

01-553 RCA Plug (D)



DC plug
RCA plug

01-555 1 RCA Plug - 1 DC plug 2.5mm (D)
01-555-203 1 RCA Plug - 1 DC plug 2.03mm (T)



DC plug

01-554 DC Plug 2.5mm (D)
01-554-203 DC Plug 2.03mm (T)



DC plug
DC plug

01-557 2 DC Plug 2.5mm (D)
01-557-203 DC Plug 2.03mm (T)

ACCESSORIES FOR SNOWMOBILE HELMETS ZO^X®



Balaclava

Knitted cotton balaclava provides added warmth when worn inside helmet.

01-540

(D)



Breath deflector

For helmets: Tavana, Azuma, Savo Jr, Magnum & Thunder

Breath deflector directs exhaled breath away from shield, further reducing fogging.

86-93103

Tavana, Savo, Thunder & Azuma

(V)



Black full face chin guard

CHIN CURTAIN keeps cold air from rising into the helmets.

For Armada Tavana R/S, Supercomp R/S, Corsa R/S Helmets

86-96030 Full face chin guard (D)

86-95065 Chin guard snow (D)

Face mask for KABA helmet

86-92009 Face mask (D)

For ETNA helmet

86-92110 Face mask (V)

For Sierra helmet

86-92110 Face mask (V)



Nevado breath deflector

Breath deflector directs exhaled breath away from shield, further reducing fogging.

86-95005

(T)



Full face helmet chin guard

Fitted for Azuma, Tavana, Magnum, Spectra R & Thunder helmets

86-93515

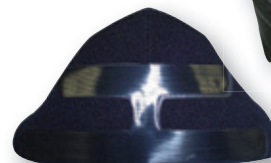
(D)



86-96062



86-96063



86-96058

Snowmobile conventional breath guard

For helmets Nevado R/S, R2, S2, Hi-Quest R/S, Genesis S

86-96058 2006 models (T)

86-96063 2007 models & up + Rubber (D)

86-96063A Breathguard in fabric (D)

For helmets Tavana R/S, R2, S2, Supercomp R/S

86-96062 2007 models & up (D)



86-96059



86-95082

Flip-up chin guard spoiler

For Nevado R/S, Hi-Quest R/S, Genesis R/S helmets

86-96059 Motorcycle (D)

86-95082 Snowmobile (D)



01-9606: Type 2



Breath guard
88-96089



Chin Guard
88-96090

Rush RX, SX Breath deflector & Chin guard

88-96089 Breath Deflector (D)

88-95090 Chin Guard (D)



01-9605: Type 1

«X'it» antifog mask

Also fits on Shoei® and Arai® dual purpose helmets.

- For Full Face helmets
- Silicone membrane on a plasticized support.
- Available in two types, which will suit most various morphological configurations.
- The ideal add-on for prescription glasses, prevent fogging.
- Rated best overall as an anti-fog mask

01-9605* For XS/S/M helmet use Type 1 (T)

01-9606* For L/XL/2XL helmet use Type 2 (T)



ZOX
HELMETS

PROPER USE OF YOUR HELMET

Warning



READ THIS MANUAL BEFORE USE

Fluorescent and Matte paints used on certain models of **ZOX** helmets are not covered by this warranty and may fade or degrade with the passage of time and exposure to the elements.

Thank you for purchasing this ZOX helmet. Please read these instructions carefully before use. They contain valuable information to help you obtain the most protection from your helmet and ensure a longer life for your helmet.

1. Read these instructions thoroughly before using your helmet for the first time and store them safely for future reference. If you lose them, your ZOX dealer can provide a replacement.
2. A helmet, like all products, may wear out over time depending upon its use and the amount of care it is given. Please check your helmet every time before use for damage and do not use a damaged helmet. The SNELL Memorial Foundation recommends a helmet life of five years. ZOX agrees with their recommendations, even if your helmet does not show any signs of malfunction, visible damage or defect. We strongly recommend you replace your helmet five years after the original date of purchase. (See "ONE IMPACT RULE" of ITEM 3 in this manual, which says "helmet is designed to help absorb ONE impact.")

HOW TO CHOOSE A HELMET AND WEAR IT CORRECTLY

No helmet can protect the wearer against all foreseeable high speed and low speed impacts. However, for maximum head protection, the helmet must be of proper fit and the retention system must be securely fastened under the chin. Failure to assure a proper fit and to securely fasten the helmet is dangerous, as the helmet could come off in an accident, which can result in severe head injury or death.

"Before purchasing a helmet, please follow Steps A through D carefully:

A

TO DETERMINE PROPER FIT

1. Measure your head size. Wrap a tape measure horizontally around your head at a height of about one inch (2.5cm) above your eyebrows. This will establish the longest measurement around your head.
2. Select the helmet that is the closest match to your head size. If your head size should fall between two helmet sizes, try on the smaller one first.

B

TRY HELMET ON

1. Expand the helmet opening by the straps (see Diagram A) and slide your head into the helmet. Pull the chin straps only, not the chinstrap covers. Pulling on the covers may rip them. If the helmet is not tight, it is too big for you. If you are unfamiliar with helmets you may be reluctant to pull down the helmet, which should feel tight. Even if you feel it is difficult to put it on, please use the smallest helmet possible. You should feel a snug fit.



CHIN STRAP COVER

C

CHECK FOR PROPER FIT. WITH THE HELMET ON, GO THROUGH THE FOLLOWING CHECKLIST TO DETERMINE WHETHER THE HELMET IS THE CORRECT SIZE.

1. Make sure the inner lining fits snugly all around your head.
2. Make sure the top pad presses closely to the top of your head.
3. Check whether the cheek pads are in contact with your cheeks.
4. Make sure there is no space between inner lining and brow where you could insert your finger.
5. Now, take hold of the helmet with a hand on each side. Without moving your head, try to move the helmet up and down, and side to side. You should feel the skin of your head and face being pulled as you try to move the helmet. If you can move the helmet around easily, it is too big. Try a smaller size.



D

CHECK THE RETENTION SYSTEM AND GO THROUGH THE FOLLOWING STEPS

1. Fasten the chin strap as tight as possible without causing you pain (see diagram B). There must be no slack in the strap and it must be tight up against your chin.
2. With the chin strap secured, put your hands flat on the back of the helmet and try to push the helmet off by rotating forward.
3. Next, put your hands on the front of the helmet above your forehead (or on the chin guard) and try to push the helmet off by rotating it toward the rear.
4. If the helmet starts to come off in either direction, do not use the helmet. Either the helmet is too large for you or the chin strap is not tightened enough.



**Repeat all of the above steps until you have a proper fit and the helmet is securely fastened.

Tightening the chin strap correctly is extremely important. Try to pull down on the chin strap with the tips of your fingers if the strap is not up against your chin or loosens, you have not properly put the strap through the D rings. Start again (see Diagram B). If your chin strap is loose, the shock of an impact may knock your helmet off, leaving your head completely unprotected. Do not use a helmet that can be rolled off the head with the chin strap fastened, since it may come off in an accident, resulting in death or serious personal injuries.

D Ring: To securely fasten the D ring retention system, thread the end of the chinstrap through the D rings only as shown in diagram B and pull it tight against your throat. Clip the chin strap end hook on the D ring as shown in diagram B to secure the loose end of the chin strap. The only function of the chinstrap end hook fitted on the end of the chinstrap is to avoid fluttering of the end part of the chinstrap.

Quick-release retention system (diagrams C and D): To fasten the strap, push the metal tongue (b or B) firmly into the buckle until it locks with a click. Pull the strap tight and pass the end of the strap through the strap ring or ladder to secure it. To release the strap, press the two catches (a) inward (Diagram C) or slide part (A) in the direction shown (Diagram D).

**The design of the retention system varies depending on national specifications. See the illustration details.

SAFETY RECOMMENDATIONS

1

No helmet can protect the wearer against all foreseeable high speed and low speed impacts. However, for maximum head protection, the helmet must be of proper fit and the retention system must be securely fastened under the chin. The helmet should allow peripheral vision when secured on your head. If your helmet is too large, it may slip or move on your head while riding, which will not protect your head in an accident, increasing the chances of serious personal injuries or death.

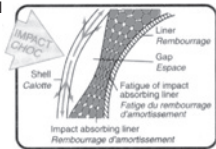
2

Use only a helmet that fits snugly all around your head and fasten the chinstrap securely under your chin. Expand the helmet opening with your hands (see Diagram A) and slide your head into the helmet. Please check whether the helmet fits properly, according to the checklist of paragraph C. Pull the chin straps only, not the chinstrap covers. Pulling on the covers may rip them. If the helmet is not tight, it is too big for you. To securely fasten the D ring retention system, thread the end of the chinstrap through the D ring retention system, thread the end of the chinstrap through the D rings only as shown in diagram B and pull it tight up against your throat. In the case of the Quick-release retention system, refer to diagram C. If your chinstrap is loose, the shock of an impact may knock your helmet off, leaving your head completely unprotected, which can result in serious personal injury or death.



3

Helmets are designed to help absorb ONE impact. After your helmet has protected you from an impact, you must get a new one. Your helmet is designed to distribute the force incurred during an impact over a wide area. Even if your helmet looks undamaged externally, its useful life is finished after one impact while riding. For example, a capsize or accident where you and your helmet hit the ground or some object. After an impact, the helmet's impact absorbing liner becomes compacted. Once this has happened, the helmet no longer has the ability to absorb further protection in an accident. If you drop your helmet or if it is hit by something and you are not sure if this one impact rule applies, consult your ZOZ dealer before you use the helmet again.



4

Clean your helmet carefully.

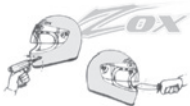
Never use hot or salt water, benzene, gasoline, glass cleaner or other solvents. Your helmet can be seriously damaged by these substances without showing any apparent visible damage. A helmet damaged or weakened by a cleaning agent may not provide head protection in an accident, which can result in serious personal injury or death. The correct way to clean a helmet is to mix 5 or 6 drops of mild soap in a quart of warm water. Dampen a soft cloth with this solution and wipe the helmet clean. Rinse with a wet cloth.



5

Never modify your helmet.

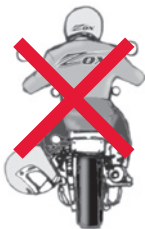
It is very dangerous to drill holes or cut the shell / or the shock absorption liner. Modifications can seriously weaken the structure of the helmet. Modifying the retention system weakens it and it may snap in an impact. Removing parts such as the mouth guard or rubber face trim can expose edges, which may injure you in an accident. Always use approved ZOX parts when replacing shields, screws, or any other parts. A weakened helmet will not provide head protection.



6

Do not mistreat your helmet.

Never ride with the helmet hanging from the helmet holder, and don't hang the helmet from angled supports like a mirror. Don't sit on your helmet or throw it around. You should not expose the liner of your helmet to strong sunlight and excessive heat, such as near heaters or where temperatures exceed 50°C (122°F). Avoid the spray of insect repellent chemicals (such as "naphthalene") near the helmet. Mistreating your helmet will damage the shell and impact absorbing liner and reduces the helmet's ability to protect you in an accident.



7

Always check your helmet before riding off.

1. Check the shield and visor screws, and retighten them if necessary.
2. Check for cracks in the helmet. Strong acid (for example, battery acid) can damage the shield base. If you find cracks or damage, stop using the helmet immediately.
3. Plastic components may start to wear out about 5 years after manufacture. If you find deterioration in any part of a component, either replace that component or get a new helmet. If these parts come loose and / or fall off while you're riding, your vision may be blocked, which could cause an accident, resulting in serious personal injuries or death.
4. Check the security of the retention system. See section D.
5. Always make sure that the center pad (or comfort liner) and the cheek pads are attached before you use the helmet.



8

Maintain your helmet shield in good condition. If your shield becomes too scratched or uncleanable, replace it with a new one. Impaired visibility causes accidents.

Clean your shield with mild soapy water, rinse well with clean water and dry with a soft cloth. Never use benzene, gasoline, glass cleaner or any other solvents. Do not attach stickers or adhesive tape to the shield, as this will weaken the hard coating. These can damage the shield. Do not drive with a dim or blurred face shield. Impaired vision can cause an accident which can result in serious personal injury or death.



9

Do not repaint the helmet.

We do not recommend you repaint the helmet, because paint and thinner can damage the materials used in the helmet construction. A damaged helmet weakened by a paint agent may not provide head protection in an accident, resulting in serious personal injury or death. If you must paint your helmet, please consult your ZOX dealer.



10

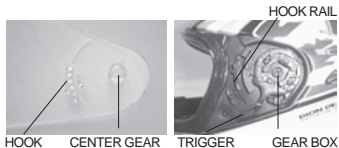
Remember : helmets block important sounds and reduce awareness of environmental changes. When you wear a helmet, especially a full-face type, you are somewhat isolated from the environment around you. Weather changes can catch you unprepared: sudden showers or temperature variations as you enter or leave tunnels or climb mountain roads can cause unexpected misting of your shield and loss of visibility. Do not drive with a fogged face shield. Wearing a helmet also reduces your ability to hear traffic sounds, especially at high speeds. With a full-face helmet, opening and closing the shield makes a major difference in how much you can hear. For safe riding, be aware that helmet type combined with your speed and whether the visor is opened or closed can affect your perception of road conditions.

11

Shield replacement

To remove the shield Completely open the shield. On one side of the helmet, push the trigger in order to free the center gear of its gear box. Move the shield forward to free the hook. Repeat again for the other side and remove the shield.

To install the shield Put the shield in its open position on the front of the helmet. Insert the hook in the hook rail first and press the shield on its external side at the center gear level. The shield easily fixes when given little room. Repeat again on the other side.



12

Sizing, fit and position. Line

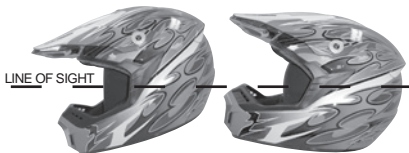
of Sight

Read Carefully:

SIZING : In order to be safe, you

must select the helmet size which fits your head snugly. If it is too large, it will move excessively on your head. If it is too small, it will cause constriction and discomfort, which could lead to lack of concentration.

Put the helmet on and then shake your head to the left and to the right. Then shake your head forward and backward and try to turn the helmet with your hands. If it slips in any direction easily, the size is not the correct one for you. Rotate the helmet from side to side, observe the movement of your skin in relation to the helmet. Helmet fit is correct when skin movement and helmet movement are nearly the same. The proper sizing of your new Zox helmet should always be done by an authorized Zox dealer. CAUTION : Position: Do not put on the helmet and fasten the buckle when your helmet is hanging on the back of your head. Remember to wear the helmet in its correct position or if the helmet is falling on the back it could slip off in case of an accident.



13

How to use the Chin Strap.

• Pass the chin strap through both D-rings as shown and pull until the helmet is firmly secured. Pass the end of the strap back between the D-rings and pull tightly. Finally fold the end of the strap over and secure it with the stopper.



1. D RING

2. TAB

3. CHIN STRAP

4. CHIN STRAP STOPPER

• To unfasten the strap, first unhook the chin strap stopper, then pull the tab downwards. Pull the chin straps out toward the sides when putting on or taking off the helmet. This makes more room for your head to pass. Do not pull on the chin strap covers (they will slide off).

14

Fitting the Peak

When fixing the peak, tighten the center screw first, and then do the same to the left and right screws. The angle of the peak can be adjusted by loosening the center screw, however make sure it is tightened once adjusted.



15

Always check your helmet before riding off.



CHEEK PAD R

CENTER PAD

CHEEK PAD L



Detachable Inner Parts

• Put on the helmet with the inner parts fixed securely.
• All the inner parts of this helmet are fully detachable and washable. To attach or detach these parts, please consult the diagram.

INSTRUCTION FOR SVS SUN SHIELD IT'S VERY SIMPLE



1

Just lower the shield.



2

Pull it out.



3

Wash it, using water & dish soap.



4

Rub in circular motion, using tips of your fingers.



5

If there is any dry insects or dry debris on your shield, simply let it soak for a minute.



6

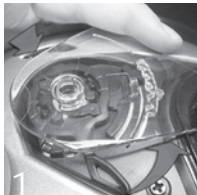
Dry with a lint free cloth.



7

Align one side at a time & push it back in the slots on each side.

INSTRUCTIONS TO INSTALL THE NEW ZOX HELMET SHIELD



Open the shield. Place the shield on top of the retention mechanism.



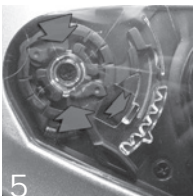
Place the shield's retention pin under the retention lever.



Place thumb on the center of the retention cylinder then push down until loud click is heard.

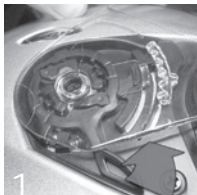


Close down the shield until it is securely locked.

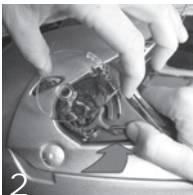


To ensure secure and proper installation, inspect both sides of the ratchet system before the shield is in place.

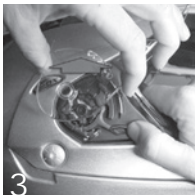
INSTRUCTIONS TO REMOVE THE NEW ZOX HELMET SHIELD



Fully open the shield.

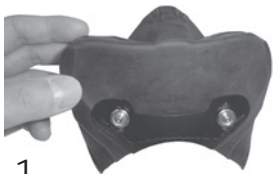


Push the release lever up using your thumb.



Using your other hand, pull out the shield while rotating it slightly downward. **IMPORTANT:** The removal method on this helmet has been designed as an added safety measure.

BREATH GUARD AND CHIN GUARD INSTALLATION FOR SNOW FLIP-UP HELMET



1

Rubber breath guard



2

Snap the breath guard on line A, if it doesn't fit well, then snap on line B.



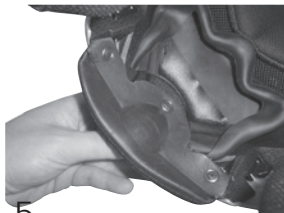
3

Chin guard



4

Snap the chin guard on the chin bar.



5

Once both are snapped on, the helmet is ready to wear.



BREATH GUARD INSTALLATION FOR SNOW FULL FACE HELMET



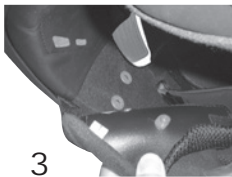
1
Remove the chin curtain.



2
Breath guard with two hanging ears.



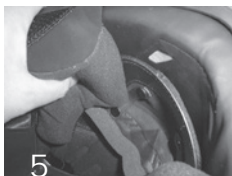
3
Pull back the lining cheek pad from both side of helmet.



3



4
Fit the breath guard in, make sure the snap can go through the hanging ear on each side.



5
Snap back the lining cheek pad



6
Push back the chin curtain, helmet is now ready to wear.

