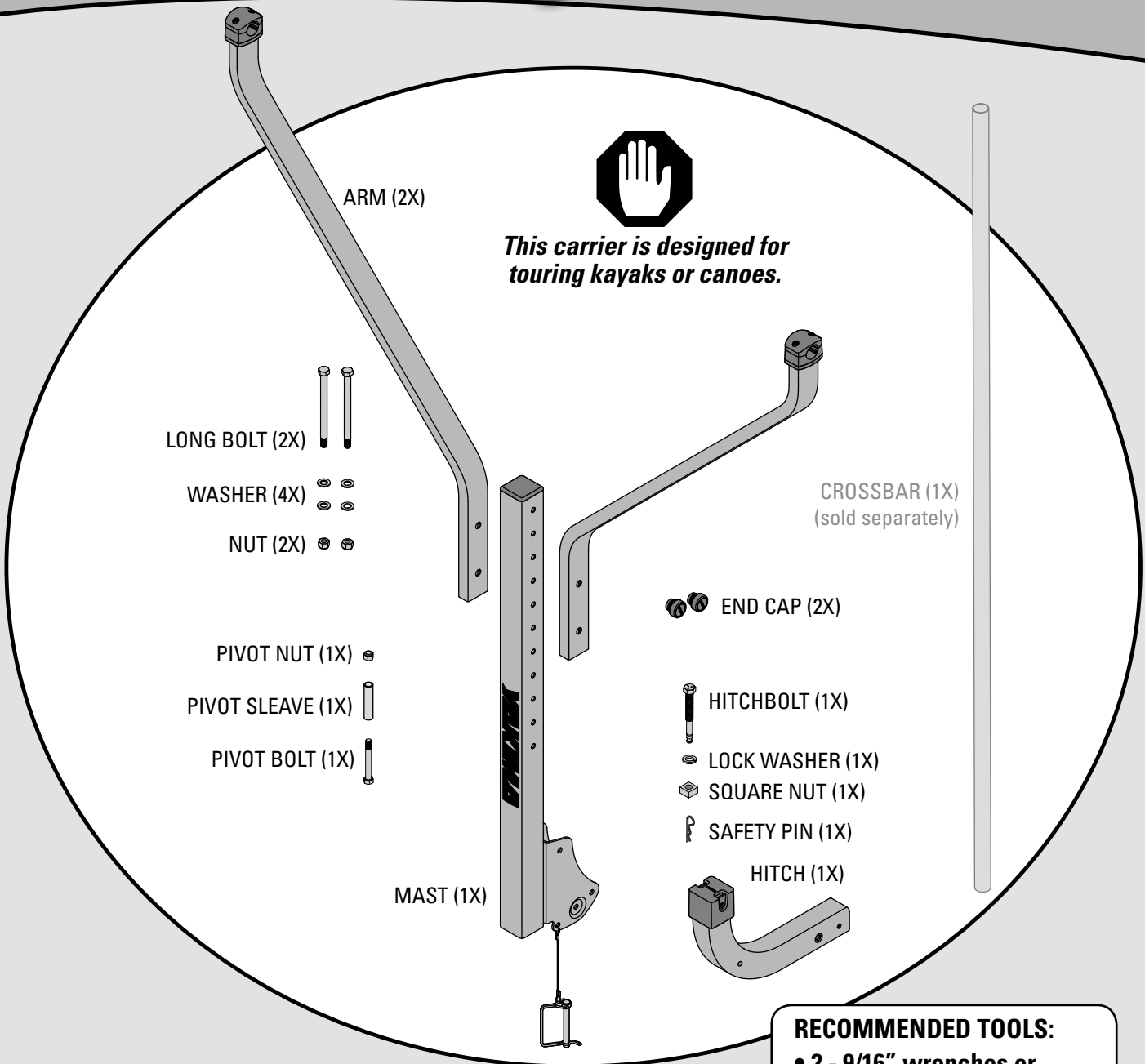


YAKIMA DryDock



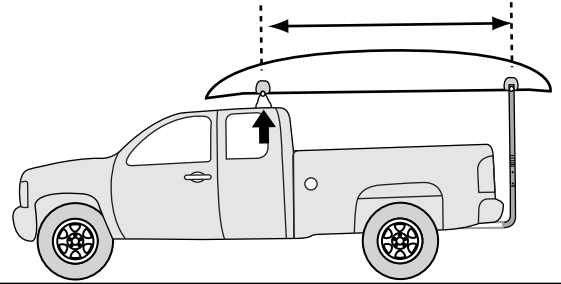
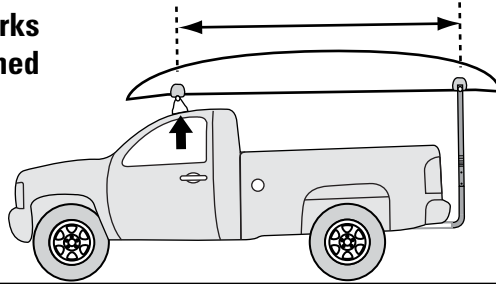
- RECOMMENDED TOOLS:**
- 2 - 9/16" wrenches or 2 adjustable-end wrenches
 - 3/4" socket wrench
 - Tape measure



IMPORTANT WARNING

IT IS CRITICAL THAT ALL [YAKIMA RACKS AND ACCESSORIES](#) BE PROPERLY AND SECURELY ATTACHED TO YOUR VEHICLE. IMPROPER ATTACHMENT COULD RESULT IN AN AUTOMOBILE ACCIDENT, AND COULD CAUSE SERIOUS BODILY INJURY OR DEATH TO YOU OR TO OTHERS. YOU ARE RESPONSIBLE FOR SECURING THE RACKS AND ACCESSORIES TO YOUR CAR, CHECKING THE ATTACHMENTS PRIOR TO USE, AND PERIODICALLY INSPECTING THE PRODUCTS FOR ADJUSTMENT, WEAR, AND DAMAGE. THEREFORE, YOU MUST READ AND UNDERSTAND ALL OF THE INSTRUCTIONS AND CAUTIONS SUPPLIED WITH YOUR YAKIMA PRODUCT PRIOR TO INSTALLATION OR USE. IF YOU DO NOT UNDERSTAND ALL OF THE INSTRUCTIONS AND CAUTIONS, OR IF YOU HAVE NO MECHANICAL EXPERIENCE AND ARE NOT THOROUGHLY FAMILIAR WITH THE INSTALLATION PROCEDURES, YOU SHOULD HAVE THE PRODUCT INSTALLED BY A PROFESSIONAL INSTALLER.

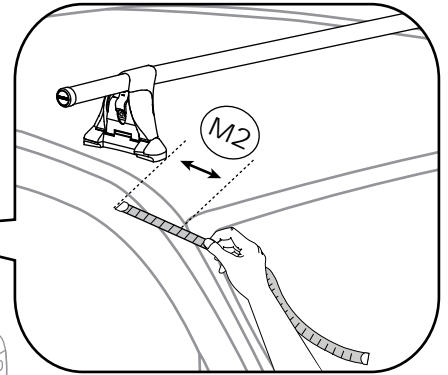
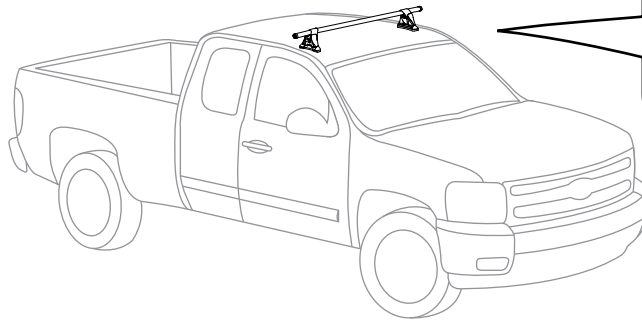
Determine what works best for your combined boat and truck.



1 TO INSTALL FRONT TOWERS:

Follow Q Tower instructions to assemble rack.

- Use M1 and M2 measurements from the list in Clip box.
- Measure from top of windshield where paint ends, to front of Towers.

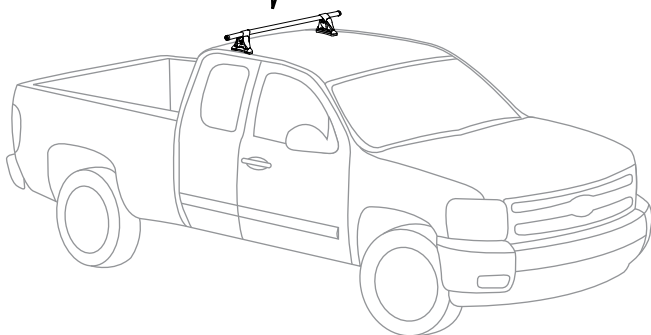
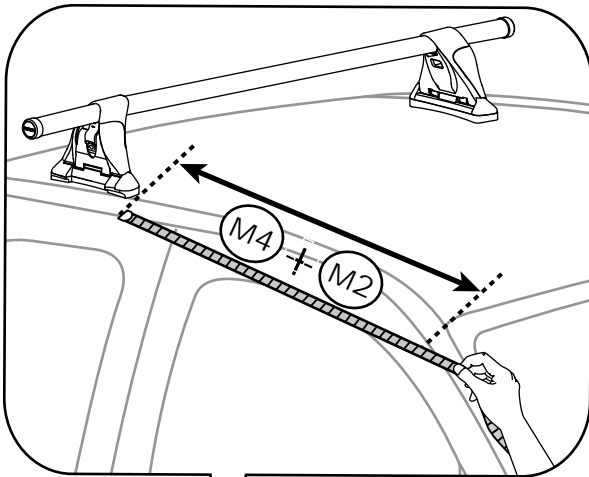


OR

TO INSTALL REAR TOWERS ONLY:

Follow Q Tower instructions to assemble rack.

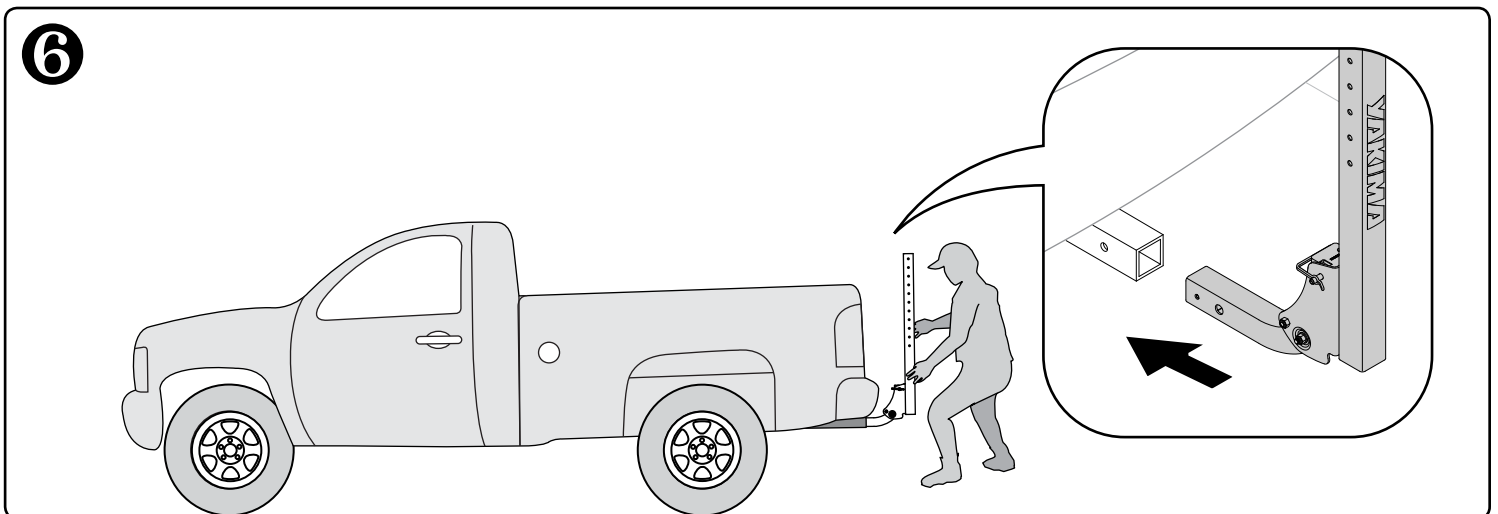
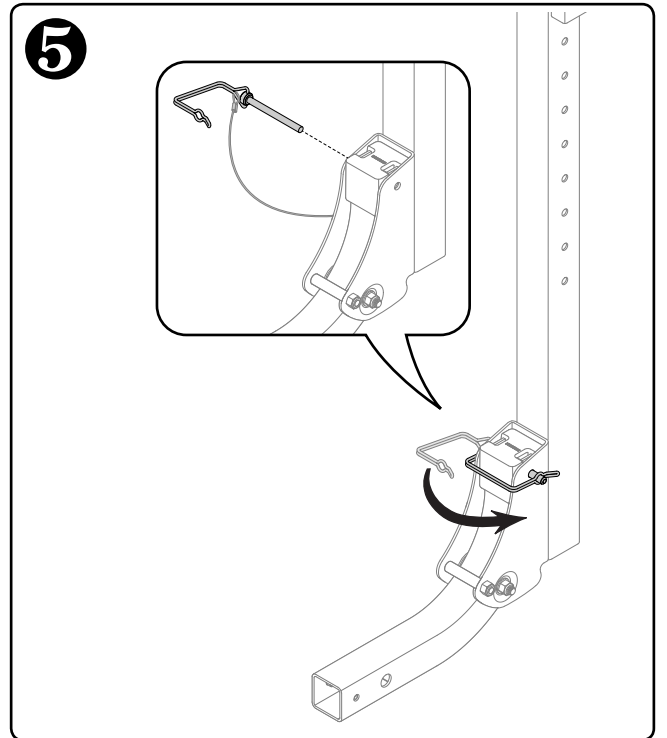
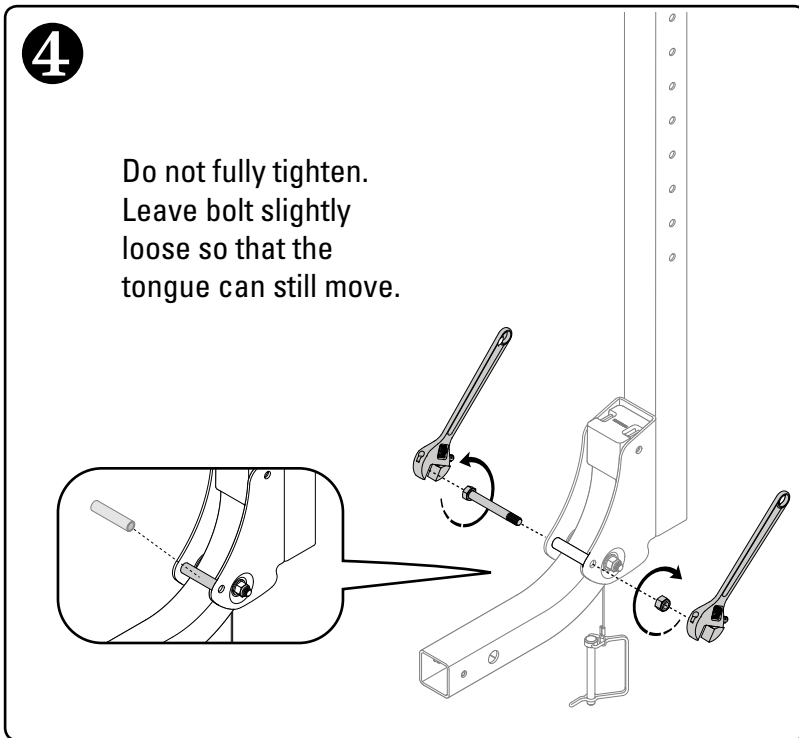
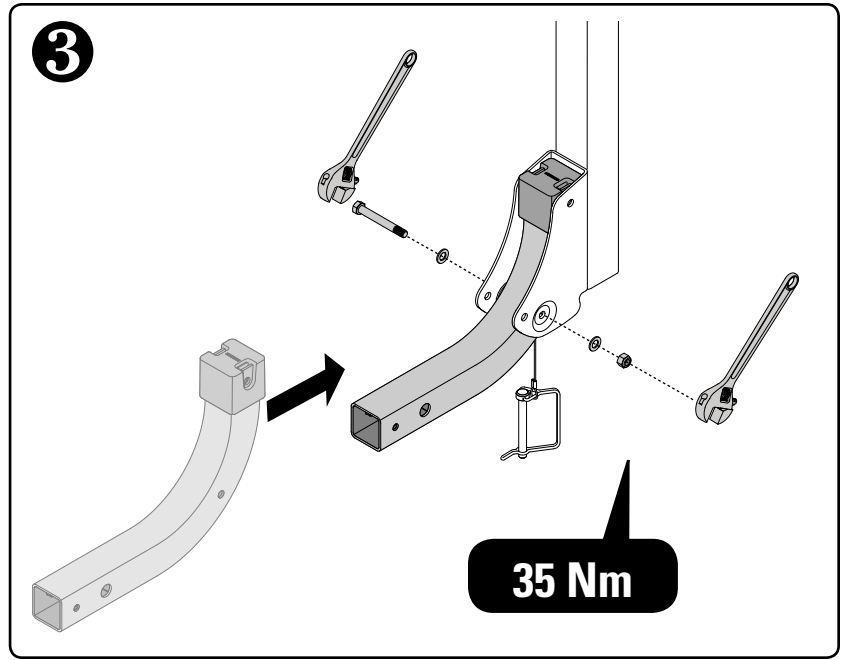
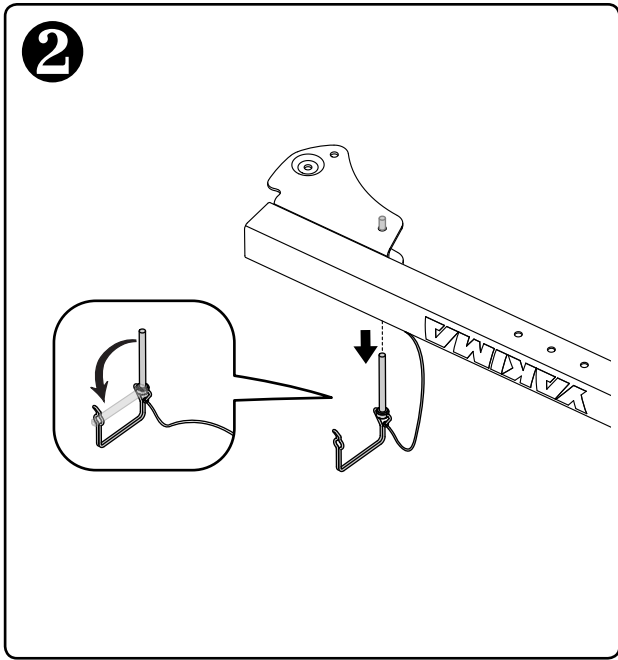
- Follow M3 measurement from list in Clip box for distance between towers on crossbar.
- Use combination of M2 and M4 for tower location.
- Measure from top of windshield where paint ends, to front of rear Tower.



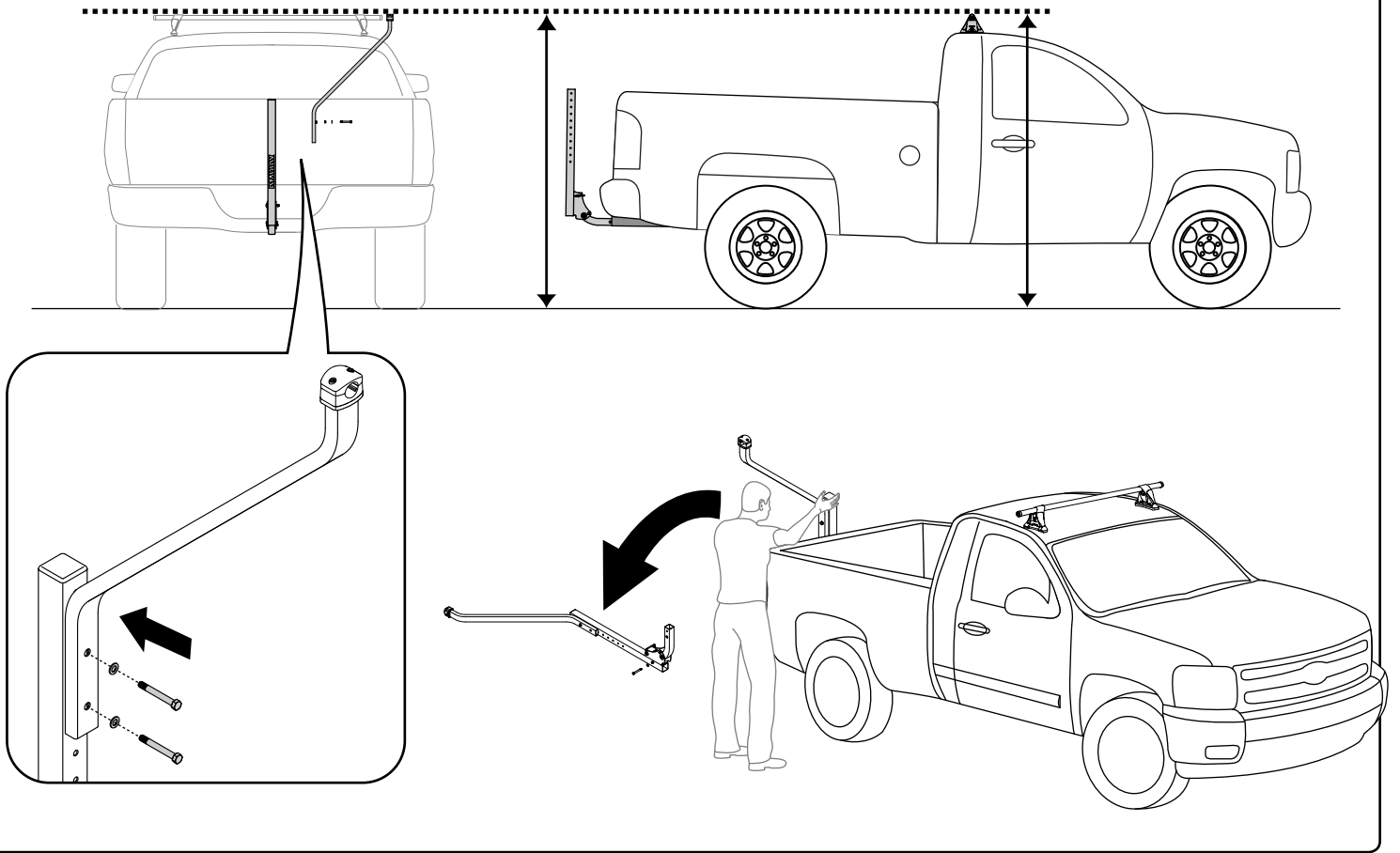
FOR EXAMPLE:

TOYOTA		M1	M2	M3	M4
Tundra Access Cab	99-02	Q107-A 42 1/2"	6"	Q107-A 41 7/8"	32"

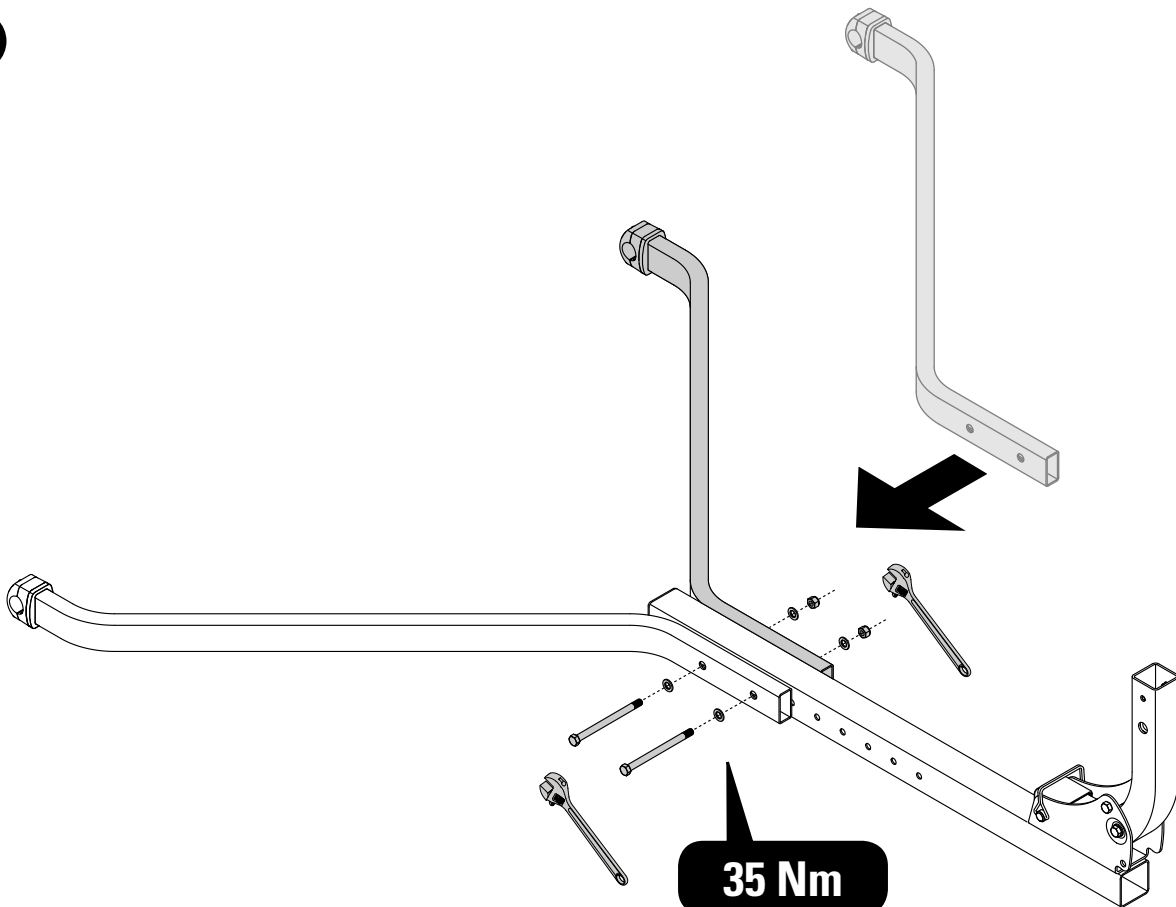
$$\begin{aligned}
 & \text{M2} = 6'' \\
 & \quad + \quad + \\
 & \text{M4} = 32'' \\
 \hline
 & \text{Tundra Tower Location} = 38''
 \end{aligned}$$



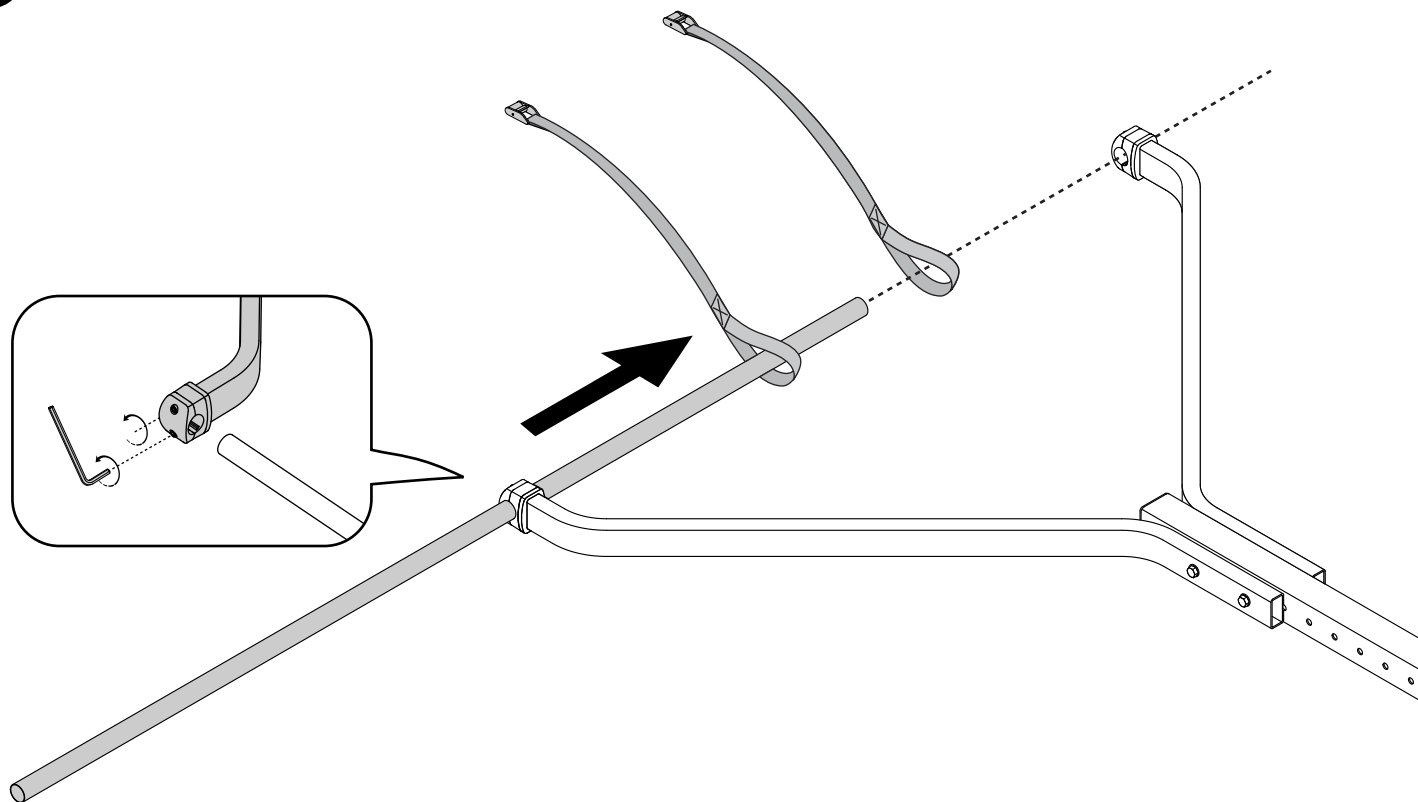
6



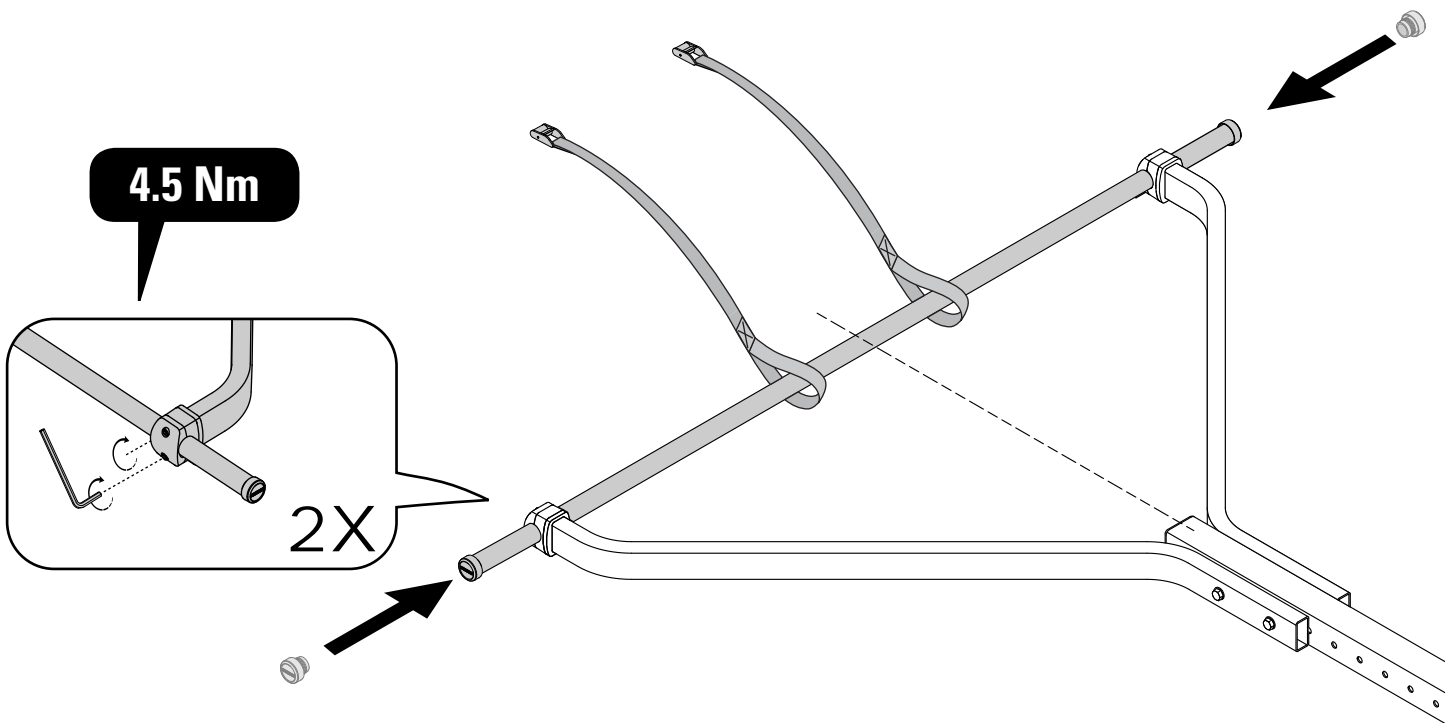
7



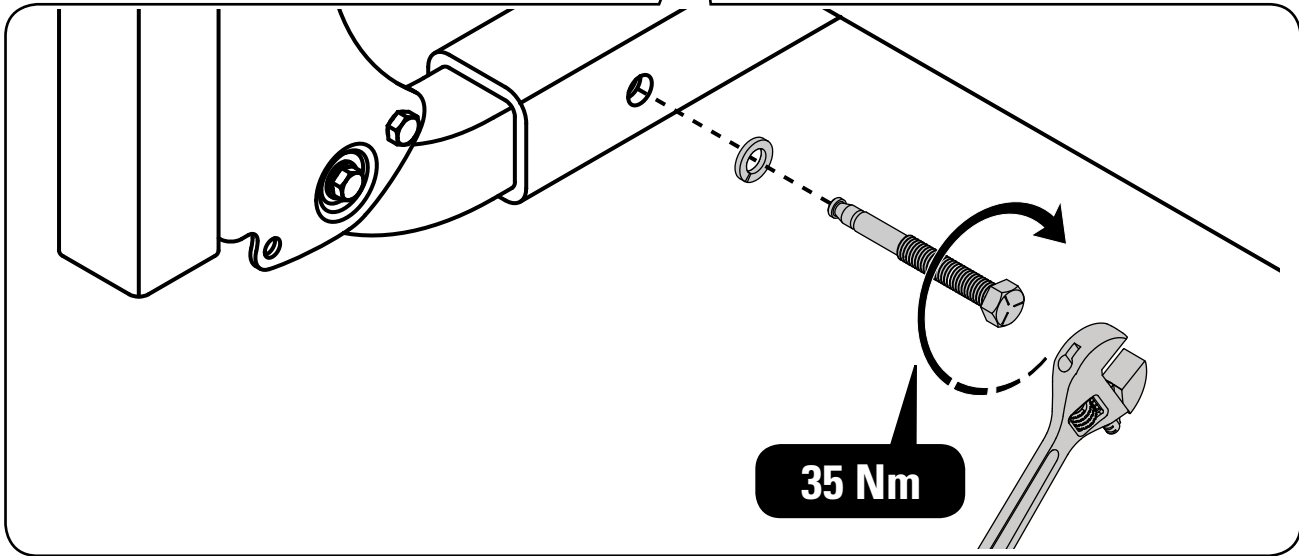
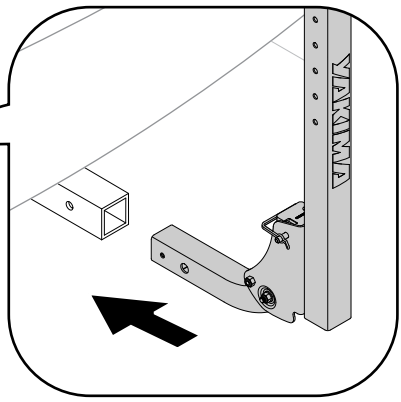
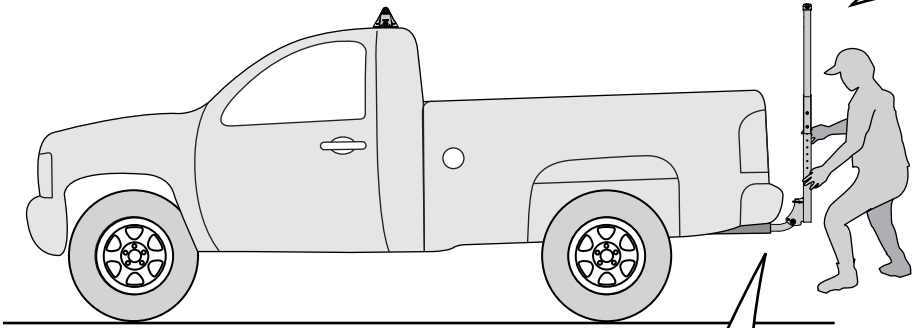
8



9

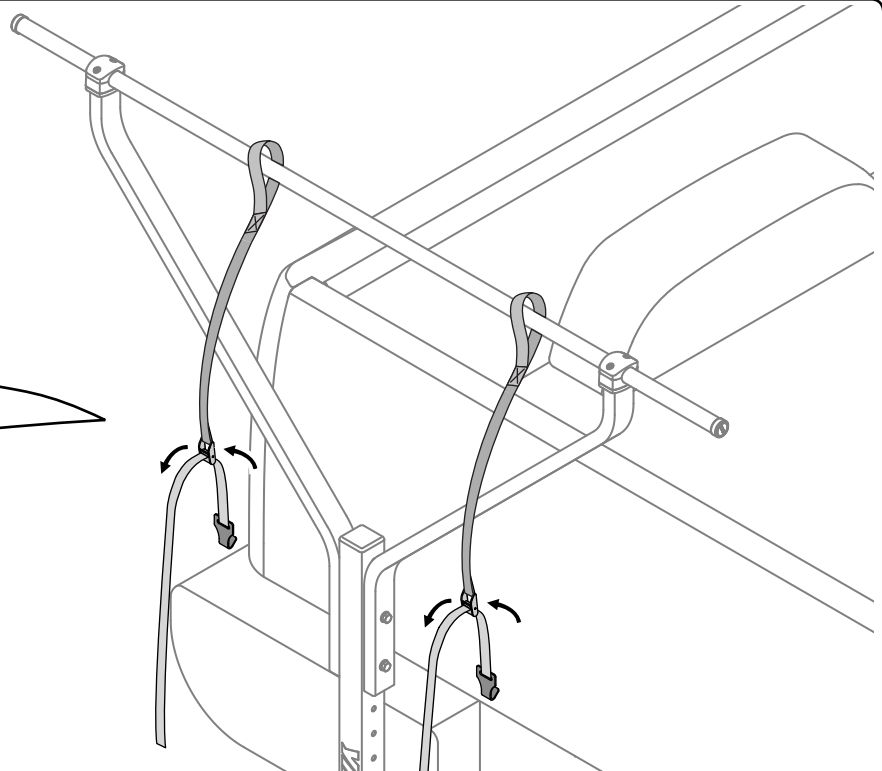
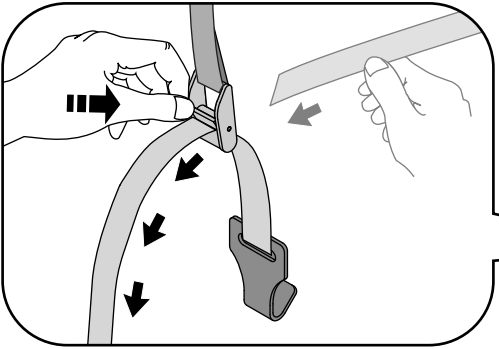


10

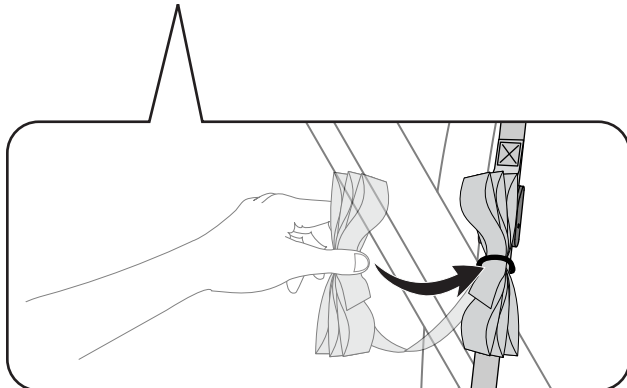
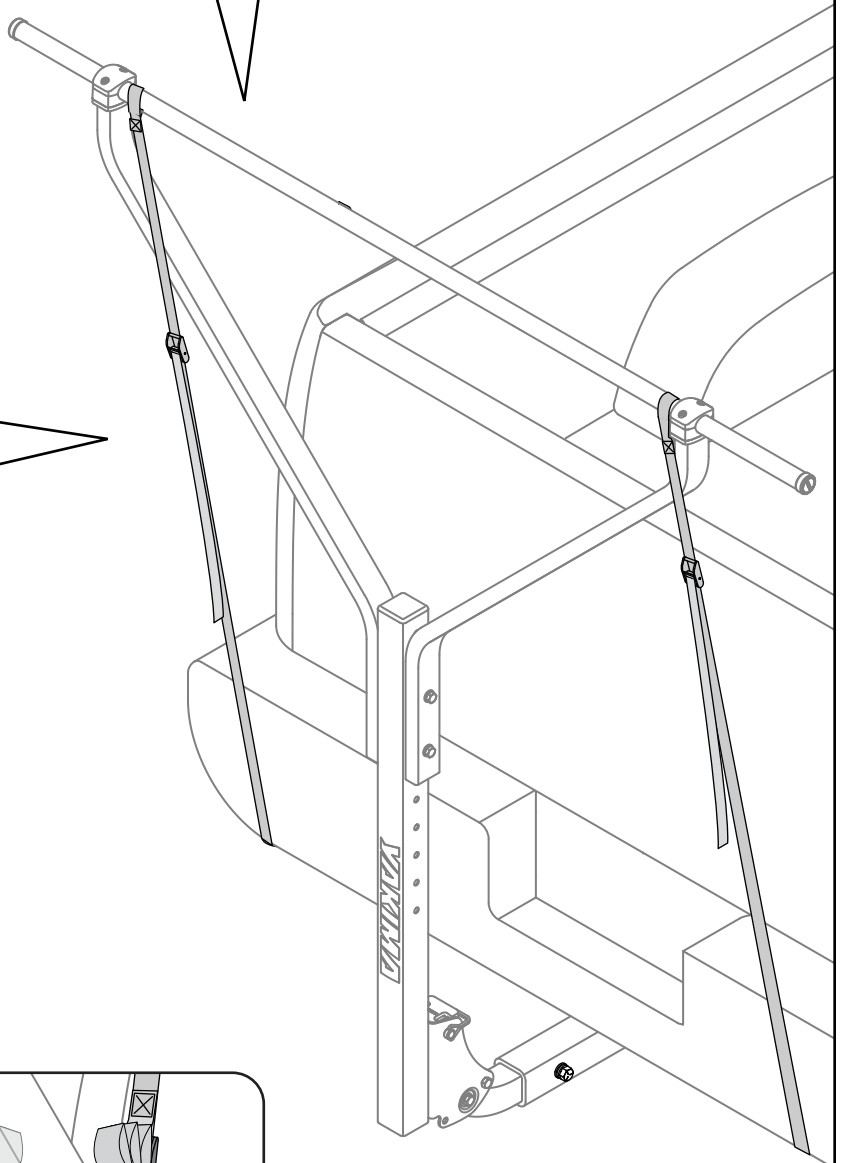
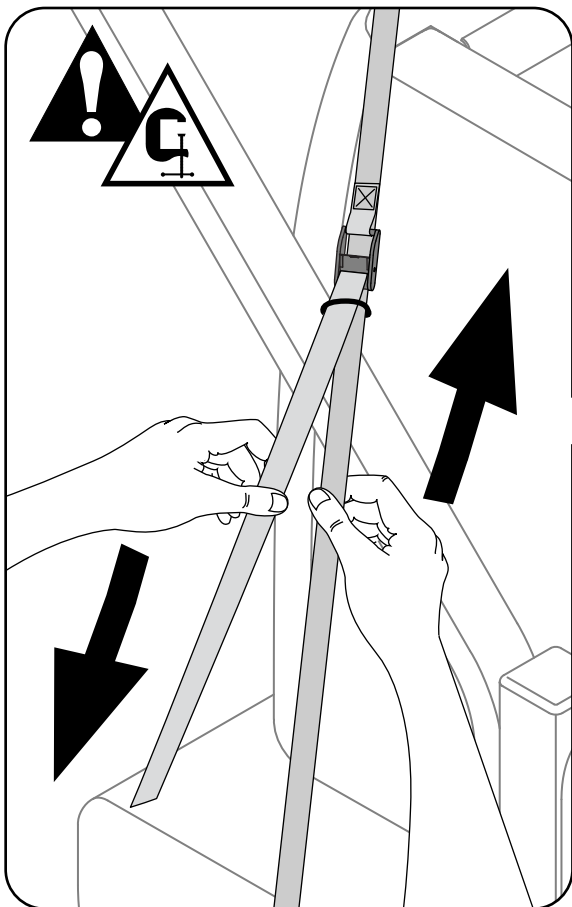
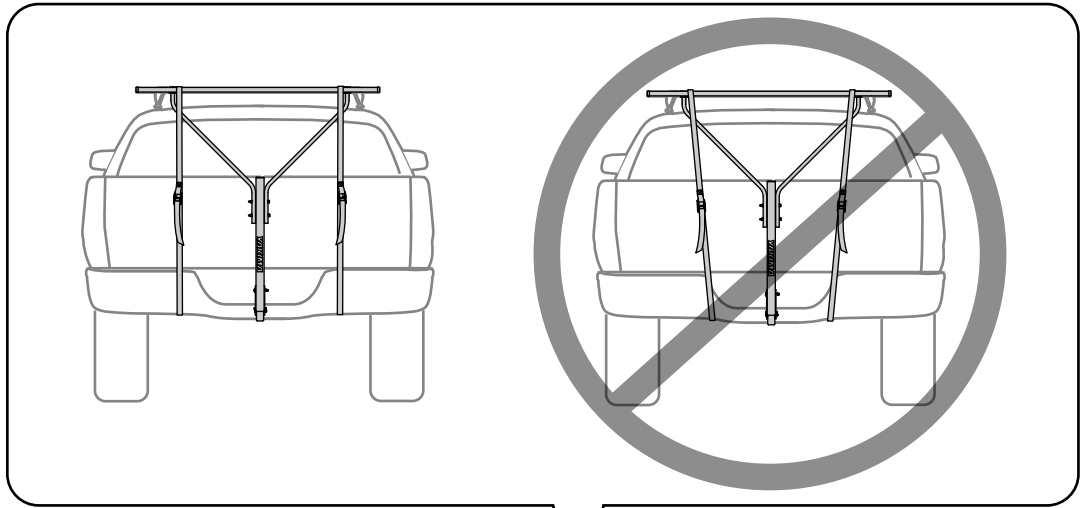


35 Nm

11

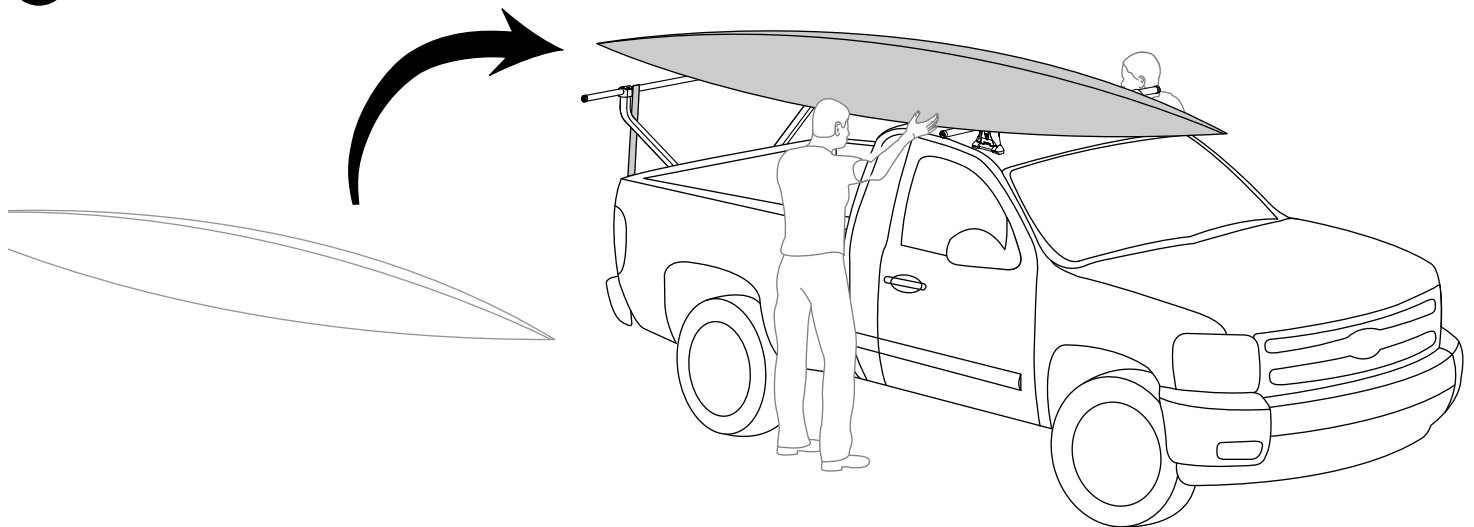


12



2X

13



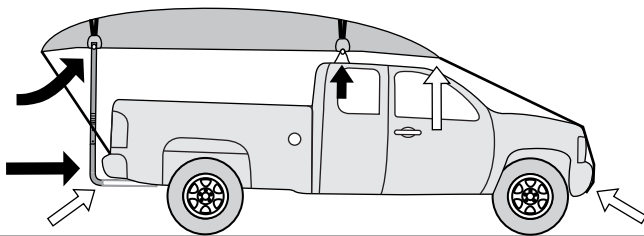
LOAD YOUR BOAT, centering side to side and front to back.

Follow accessory instructions to secure the boat to the crossbars.

NOTE: Some shorter boats will prevent accessories from working properly.



Secure front and rear of long loads to ends of vehicle for safe transport. Failure to do so could result in property damage, personal injury, or death.



- Periodically check for crossbar rotation. If it rotates, tighten crossbar clamps, but do not over tighten.

- Periodically check the hitch bolt and tighten if necessary.

- Failure to install and secure stabilizing straps before driving away can result in property damage, personal injury or death.

This carrier is designed for touring kayaks or canoes.



**BOAT ACCESSORY
FIT WARNING:**

Some shorter boats will prevent boat accessories from working properly with longer crossbar spreads.

