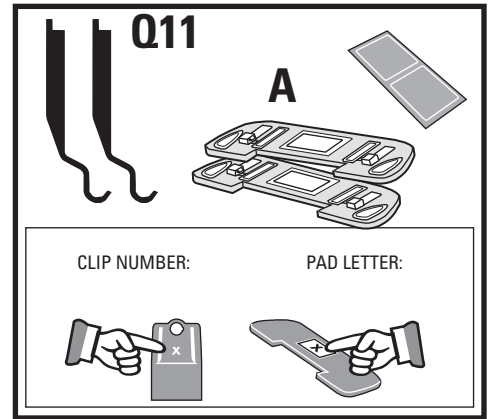
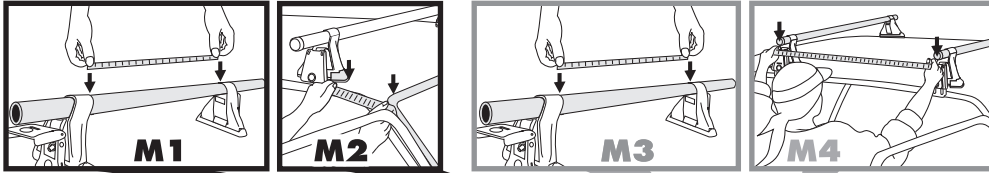


YAKIMA Q11

CLIPS / PADS

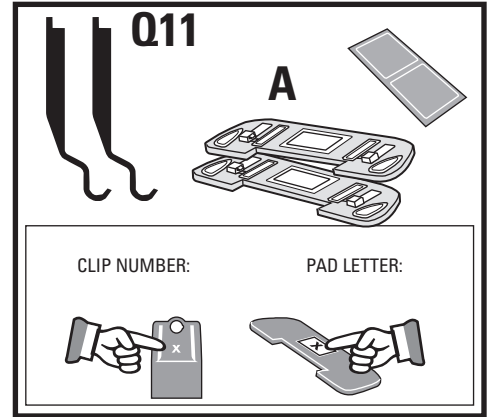
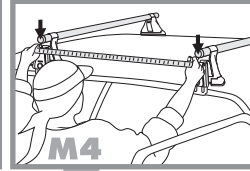
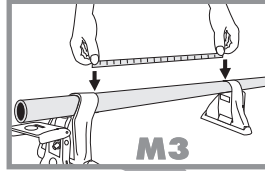
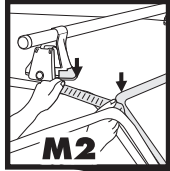
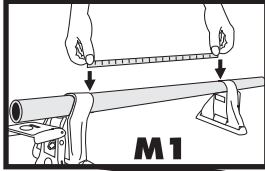






Look at the notes that apply to your vehicle.

		M1	M2	M3	M4
ACURA					
Integra 4dr	94-01	Q11-A 36-3/8"	5"	Q11-A 36-3/4"	27"
					54,63,68,82,102,103 104,112,187,197
Legend 2dr	87-90	Q11-A 38"	4"	Q11-A 38-3/8"	30"
					63,68,82,187 191,197
Vigor	92-94	Q11-A 37-1/2"	4"	Q11-A 36 5/8"	30"
					68,82,187, 191,197
BMW					
3 Series 2dr	00-06	Q11-A 38-1/2"	5"	Q11-A 38-1/4"	19"
					82,84,101,105,187
3 Series 2dr with Q Stretch Kit	00-06	Q11-A 38-1/2"	5"	Q11-A 38-1/4"	32"
					82,191,197
M3 2dr	01-06	Q11-A 38-1/2"	5"	Q11-A 38-1/4"	19"
					82,84,101,105,187
M3 2dr with Q Stretch Kit	01-06	Q11-A 38-1/2"	5"	Q11-A 38-1/4"	32"
					82,191,197
FORD					
Probe	88-92	Q11-A 41-1/2"	4"	Q11-A 40-1/2"	16"
					61,63,82,84,187,193
Probe with Q Stretch Kit	88-92	Q11-A 41-1/2"	4"	Q38-A 38-3/4"	27"
					61,63,82,102,103 104,187,197
LEXUS					
ES300	92-96	Q11-A 40-1/4"	4"	Q11-A 39-5/8"	25"
					61,63,68,82,102 103,104,187,197
ES300 with Q Stretch Kit	92-96	Q11-A 40-1/4"	4"	Q11-A 39-5/8"	32"
					61,63,68,82 191,197
MAZDA					
929	92-95	Q11-A 39-1/4"	6"	Q11-A 39-1/8"	24"
					68,82,102,103 104,187,197
929 with Q Stretch Kit	92-95	Q11-A 39-1/4"	6"	Q11-A 39-1/8"	30"
					68,82,187,191,197
MITSUBISHI					
Diamante 4dr	92-96	Q11-A 40-1/8"	4"	Q11-A 40-1/2"	30"
					61,63,82 187,191,197
NISSAN/DATSUN					
240 SX 3dr	89-93	Q11-A 40-1/8"	3"	Q11-A 40-1/2"	18"
					68,82,84,101 105,132,187

YAKIMA Q11

CLIPS / PADS



						
TOYOTA	M1	M2	M3	M4		
Celica 3dr	94-97	Q11-A 38"	5"	Q11-A 37"	14"	63,68,82,112,132
Celica 3dr with Q Stretch Kit	94-97	Q11-A 38"	5"	Q11-A 37-1/2"	27"	63,68,82,92,102,103,104 112,123,132,187,197
Celica 2dr	94-95	Q11-A 38"	5"	Q11-A 37"	14"	63,68,82,112
Celica 2dr with Q Stretch Kit	94-95	Q11-A 38"	5"	Q11-A 36-3/4"	28"	63,68,82,102,103 104,112,187,197
Celica 2dr	86-89	Q11-A 35-5/8"	4"	Q11-A 35-5/8"	16"	36,63,82,84,187,193
Celica 2dr with Q Stretch Kit	86-89	Q11-A 35-5/8"	4"	Q38-A 35"	27"	36,63,82,102 103,104,187,197

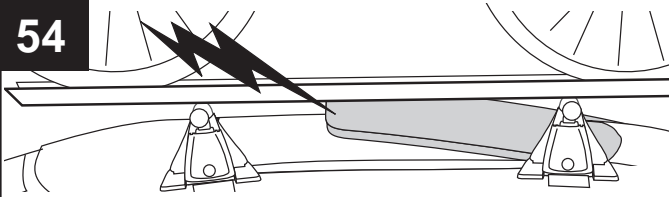
Look at the notes that apply to your vehicle.



36

Yakima racks are not recommended for convertible tops, T-tops or any type of removable roof panels.

54



When open, the sunroof may interfere with some accessories.

61

The roof, rubber/chrome door seals and/or trim may deform or be damaged under prolonged contact with any roof rack towers and/or clips. Do not over-tighten or overload the rack. Remove rack when not in use.

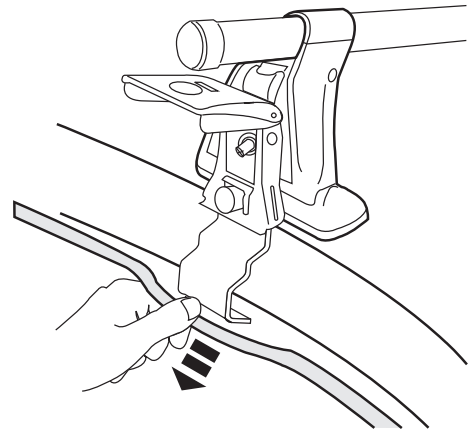
82

Any load extending beyond the length of the roof (except luggage boxes) must be secured to both the front and rear of the vehicle, in addition to the rack.

84

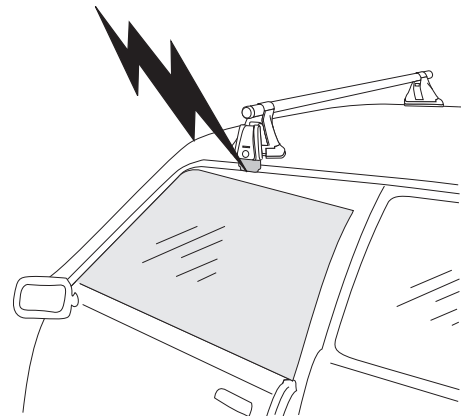
SideWinder (Tandem Bike Mount) will not work due to crossbar spread limitations.

63



For a secure fit pull down door frame seals enough to insert the clip against underside of rain gutter, trim, and/or roof.

68



The clip fits tightly between the window and the door frame. Open/close your doors carefully to prevent window contact.

101

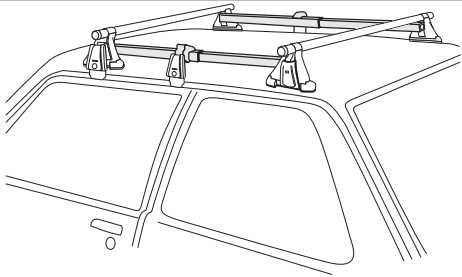
StrapThang limited to 2 surf/sailboards. Board length limited to 8' or less on this application. Boards must be stacked - DO NOT carry side-by-side.

102

StrapThang limited to 2 surf/sailboards. Board length limited to 10' or less on this application. Boards must be stacked - DO NOT carry side-by-side.



92



The Stretch Kit must be used with this option.

103

Due to crossbar spread limitation, Kayak Stacker is not recommended on this application.

104

Canoes must be 14 feet or less on this application.

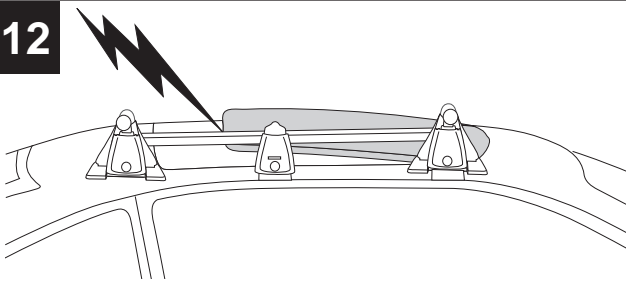
105

Surf/Sail/Paddleboard length limited to 10' or less when using Wavehog on this application.

132

Any load/mount extending beyond the rear hatch seam may cause interference.

112



The sunroof should not be opened while the rack is installed. Remove rack when not in use.

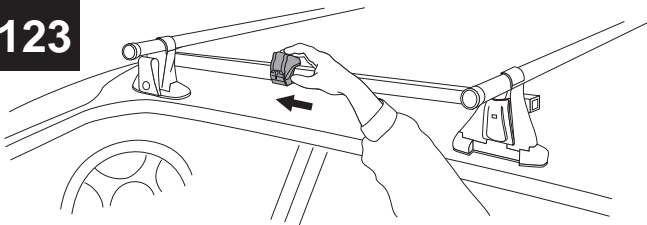
187

Boa bike mount will not work due to crossbar spread limitations.

191

StrapThang limited to 2 surf/sail boards. Boards must be stacked - DO NOT carry side by side.

123



The Stretch Kit must be used with this option. Slide the Stretch Kit housing all the way forward.

193

Loads are limited to 2 bikes, skis and/or a BasketCase. Do not exceed maximum weight of 30lbs. per bike.

197

Foam blocks limit capacity to one boat per vehicle.