



**Hitchgate™ Spare
Tire Carrier**
Installation Guide



| Parts List | | | |
|---------------------|---|------------|---------------|
| UHG1060/1070 | | | |
| ITEM | UHG1060-2 / 1070-2, HARDWARE | QTY | PKG BY |
| 1 | 1/2 - 13 x 5 1/2" Hex Bolt (Gold Zinc) | 1 | |
| 2 | 1/2 - 13 Nylok Hex Nut | 1 | |
| 3 | 1/4 - 20 x 3/4" Pan head Phillips | 1 | |
| 4 | 1/4 Flat Washer | 2 | |
| 5 | 1/4 - 20 Nylok Hex Nut | 1 | |
| 6 | Single Latch Pin w/Cable and Bracket | 1 | |
| 7 | M14 x 1.5 x 40MM Full THD GR.8.8 | 3 | |
| 8 | M14 x 1.5 Wheel Lug Nut, (Chrome Acorn) 13/16" Hex | 4 | |

| | | | |
|----|-------------------------------------|---|--|
| 9 | M12 x 1.5 40MM Full THD GR.8.8 | 2 | |
| 10 | M12 x 1.5 Wheel Lug nut 3/4" Hex | 3 | |
| 11 | Master Lock Cable, 6ft Looped | 1 | |
| 12 | Delrin Washer (In-House Fab) | 2 | |
| 13 | 5/16" Quick Link | 1 | |
| 14 | Polyurethane Bushing | 1 | |
| 15 | 1/2 USS Flat Washer Zinc Yellow | 3 | |
| 16 | 1/2" Flat Washer SAE Zinc Yellow | 2 | |
| 17 | Bracket M14 | 1 | |
| 18 | Bracket M12 | 1 | |
| 19 | 1/4-20x 7/8 GR8 Hex Bolt | 2 | |
| 20 | 1/4-20 Nylok Nut | 2 | |
| 21 | 1/4 GR8 Washer | 4 | |

Parts Listed Below are Assembled Before Shipping

| ITEM | UHG1060-1, HARDWARE | QTY | PKG BY |
|-------------|------------------------------------|------------|---------------|
| 1 | TireGate Sticker | 2 | |
| 2 | 3" Cap - Plug | 1 | |
| 3 | 1/2 - 13 x 3" Full Thread Hex Bolt | 1 | |
| 4 | 1/2" Flat Washer | 1 | |
| 5 | 1/2" Split Washer | 1 | |
| | Rubber Bumper (Pre-installed) | 2 | |
| | WEDGE LOCK | 1 | |

rev 070811

Hitchgate™ Installation Instructions P/N UHG1060 and P/N UHG1070

WARNING

THE HITCHGATE MUST ONLY BE INSTALLED IN A CLASS III or CLASS V 2" HITCH ASSEMBLY.

Tow vehicles maximum trailer rating may be less then the HitchGates rating, see vehicles owner's guide for maximum towing and tongue weight.

By installing this product you have used 250 pounds of your current tongue load capacity. See vehicles owners guide and tow hitch for maximum tongue weight and reduce by 250lbs (example: Max Tongue wt 600 lbs – 250 lbs = 350 lbs maximum tongue weight available after installing this product)

1. **Make sure vehicle is turned off and the emergency brake is set before installing this product.**
2. Remove hitch pin and ball mount.
3. Liberally grease the bolt and anti-rocking wedge-lock on the end of the receiver insert. See Figure 1.
4. Insert The HitchGate wedge-lock assembly into the vehicles receiver pushing it to its maximum depth.
5. Align the HitchGate's hitch pin holes with the receiver's using the hitch pin. See Figure 1. Remove the hitch pin.
6. Tighten the anti-rocking wedge lock using a 3/4" socket and a 12" long extension inserted through the lower 2" tube. Tighten to approx. 75 ft/lbs. **(See Figure 2.)**

WARNING

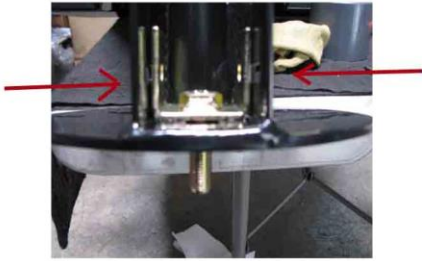
THE ANTI-ROCKING WEDGE LOCK IS ONLY TO CONTROL ANY ROCKING MOTION THE HITCHGATE WOULD HAVE WHILE THE VEHICLE IS IN MOTION. THIS IS NOT A SAFETY DEVICE. A HITCH PIN MUST BE INSTALLED SECURING THE HITCHGATE TO THE VEHICLE'S RECEIVER AT ALL TIMES.

7. Reinsert the vehicle's receiver hitch pin.
8. Insert the tire mount swing arm into the HitchGate frame and insert the latch pin through the frame's tabs and the poly-urethane bushing. **(See Figure 3.)**
9. Place a black plastic thrust washer on the top and the bottom of the round metal bushing. Grease and then insert the 1/2-13x5 1/2" bolt with 1/2" flat washers on the top and bottom through the bushing and tighten snug. **(See figure 3.)**
10. Pull the latch pin and test the swing of the HitchGate. If it swings too easily, tighten the pivot bolt as necessary. If it takes too much effort to make it swing, loosen the pivot bolt as necessary. (Approx. 35 ft/lbs)
11. Attach the latch pin lanyard to the HitchGate using the supplied hardware. See Figure 3.

Installing the upper lug bracket

12. There are 2 different upper lug brackets included in your kit. (14mm and 12 mm) Use the larger one when possible by checking to see if it will work with your rim or use the same size as you vehicle.
13. Install the bracket using the 2 – 1/4x20 bolts just snug for now. This will allow you to align the remaining wheel bolts when you mount the tire for the first time.

Install 1/4x20 bolts
2 places



14. Mount the wheel /tire to the HitchGate tire mount using the supplied hardware matching the bolt size to the upper mounting bracket size. Use a minimum of 3 lug bolts at all times. Full size trucks and SUV's use 4 total lugs.
15. Snug all of the lugs and tighten the 2- 1/4x20 upper bracket bolts to 28 ft lbs.
16. Torque all of the lugs to 75 ft lbs.

WARNING

**THE MAXIMUM SPARE TIRE WEIGHT ON THE HITCHGATE
MUST NOT EXCEED 150LBS.**

17. Secure the wheel/tire to the HitchGate using the safety cable through the lanyard safety loop. See Figure 3.

WARNING

**THE WHEEL/TIRE MUST BE SECURED TO THE HITCHGATE WITH THE
SAFETY CABLE AT ALL TIMES.**

**AFTER DRIVING THE VEHICLE 25 MILES RE-TORQUE THE WHEEL LUGS TO
75 FT LBS.**

CHECK THE LUGS DURING YOUR SCHEDULED OIL CHANGES.

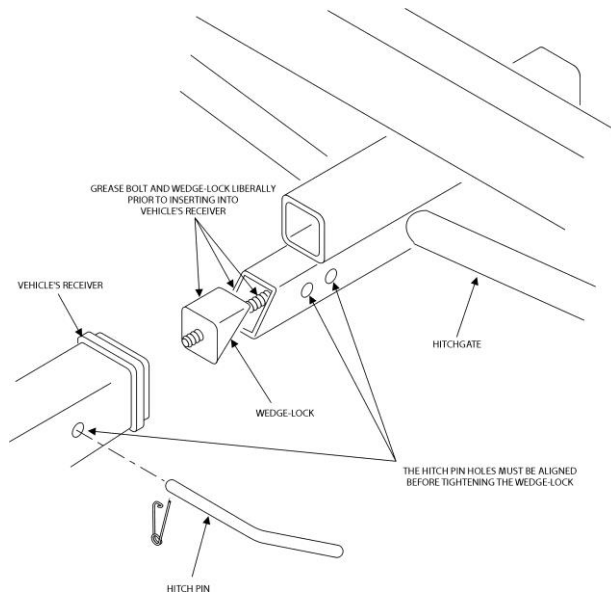


Figure 1. Grease wedge-lock before inserting into receiver.

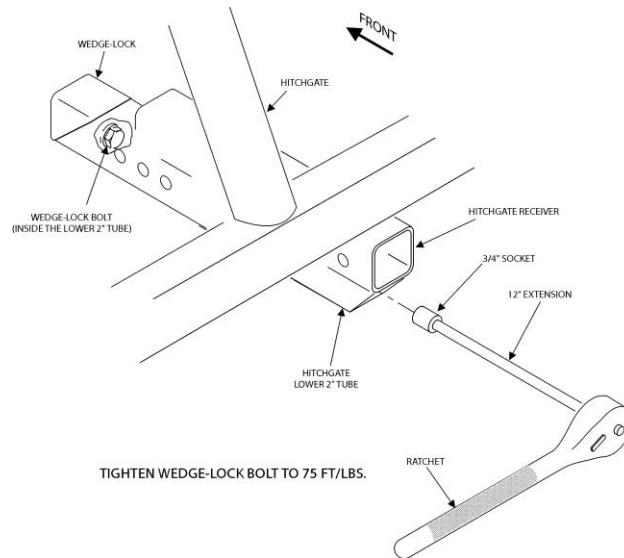


Figure 2. Tighten the wedge-lock bolt to 75 ft/lbs.

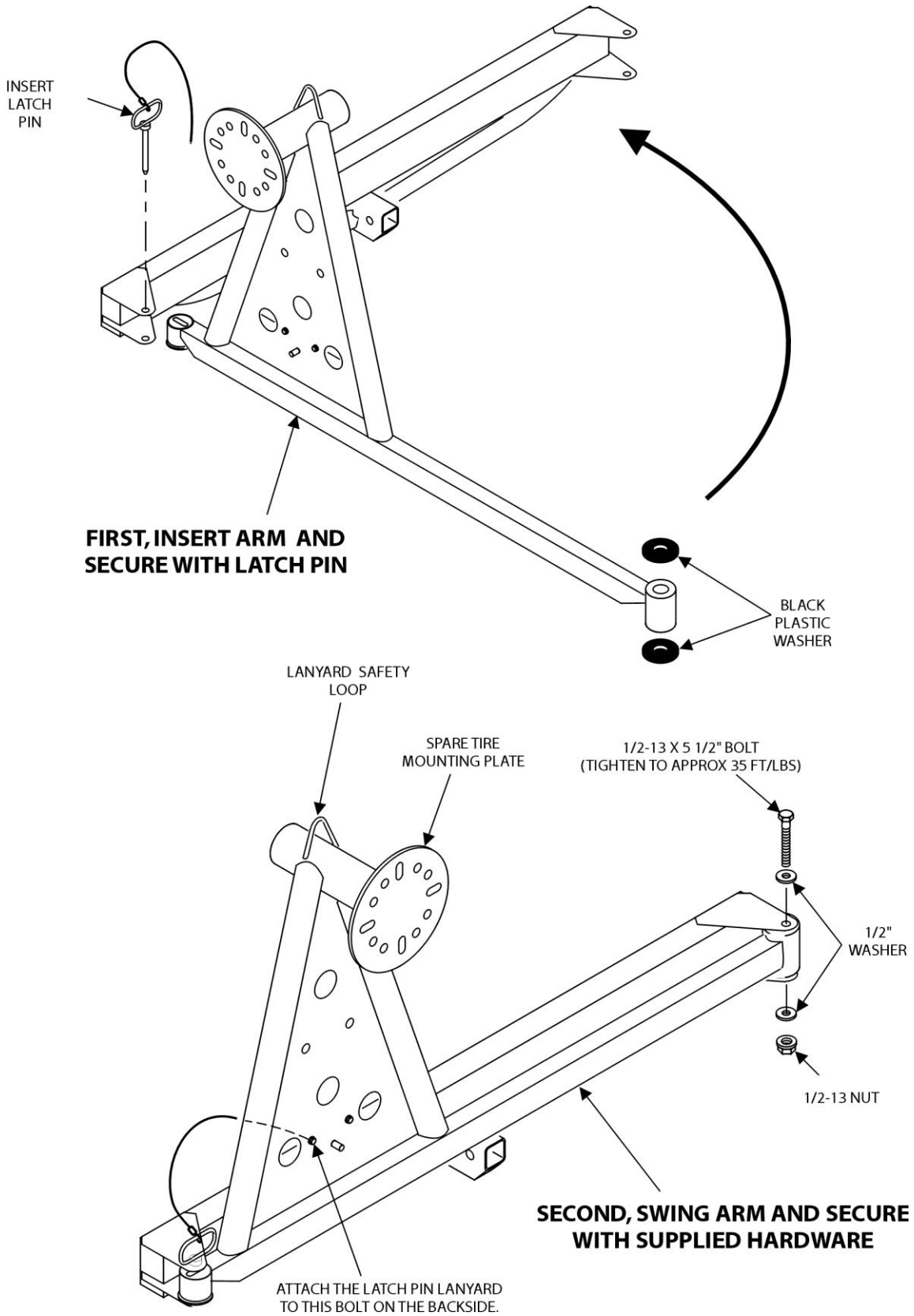
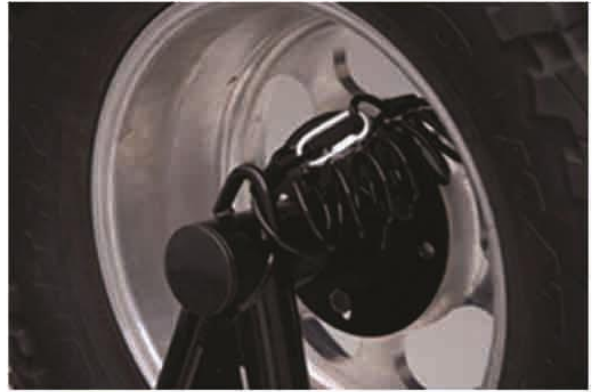


Figure 3. Mounting HitchGate Swing Arm to Receiver Arm



Secure the wheel/tire to the HitchGate using the safety cable through the lanyard safety loop as shown. Figure 4



Hi-Lift jack mounted with optional bolt kit #HL60000 and License Plate Relocation Kit # LPR 25676