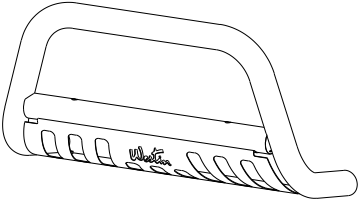
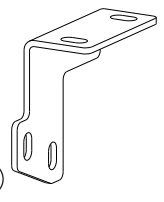
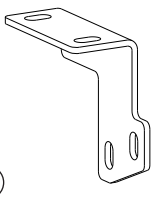




AUTOMOTIVE PRODUCTS, INC.

# INSTRUCTIONS

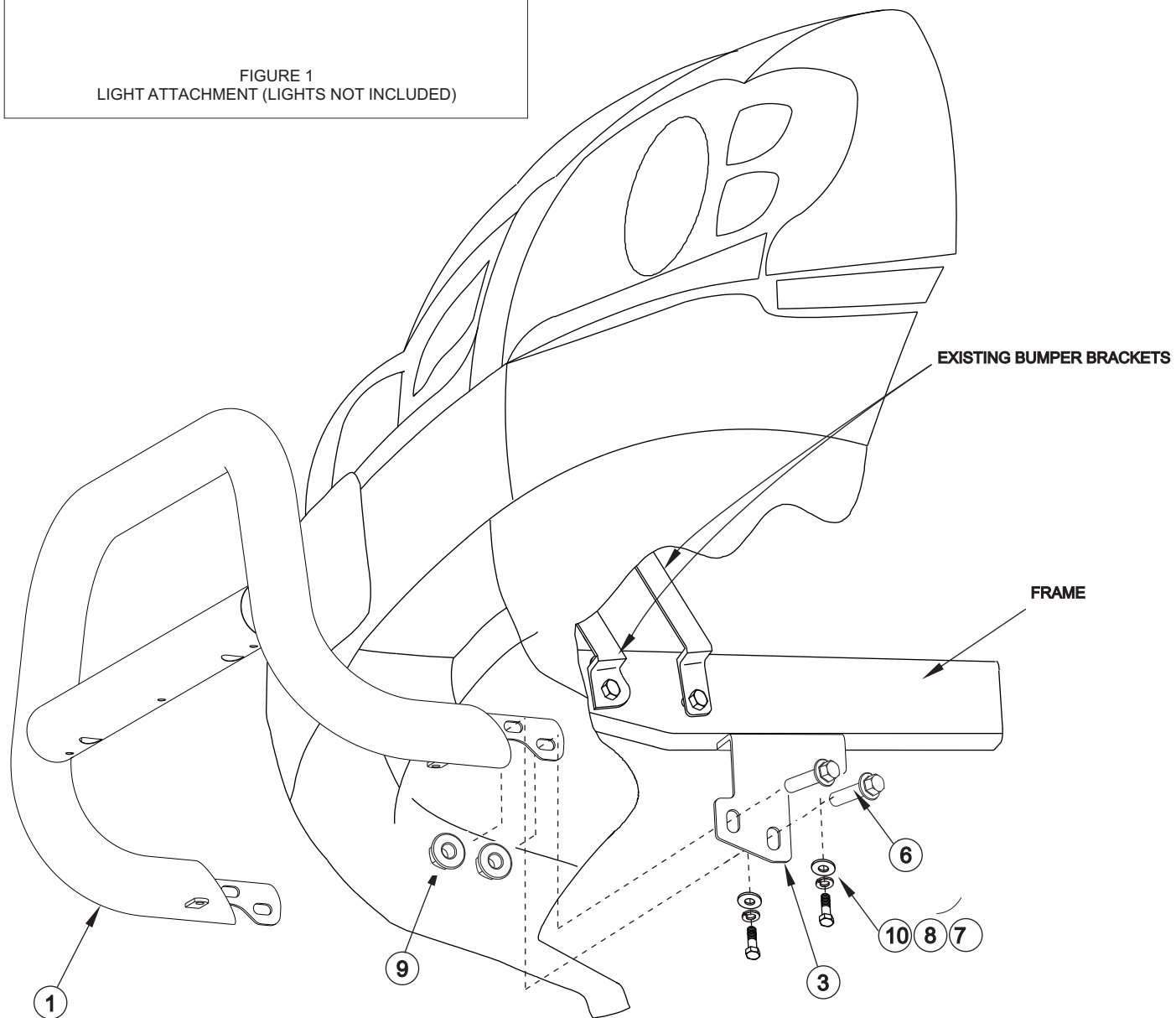
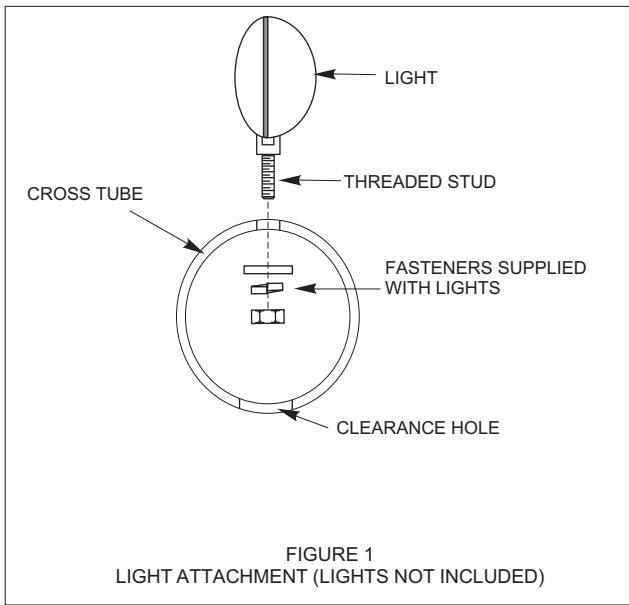
APPLICATION: 2005-12 NISSAN FRONTIER/XTERRA  
 2005-07 NISSAN PATHFINDER  
 2008-12 NISSAN PATHFINDER

BULL BAR ASSEMBLY				
32-1690 32-1800	32-1695 32-1805			
ITEM	QTY	CONTENTS	TOOLS	
1	1	BULL BAR ASSEMBLY	18MM SOCKET 10MM SOCKET RATCHET TORQUE WRENCH UTILITY KNIFE	
2,3	2	BRACKET, PASSENGER (2) AND DRIVER (3)		
4	2	PLASTIC PLUG		
5	4	RUBBER BUMPER		
6	4	M12- 1.75 X 30MM SERRATED FLANGE BOLT		
7	4	M12 FLAT WASHER		
8	4	M12 LOCK WASHER		
9	4	M12 SERRATED FLANGE HEX NUT		
10	4	M12-1.25 X 30MM HEX HEAD BOLT		

- STEP 1.** Remove the contents from box and check for damage. Verify all parts are present. Read instructions completely before beginning.
- STEP 2.** **NOTE:** It may be necessary to remove/relocate front license plate and license plate bracket. It is not required, but strongly recommended. If local/state laws requires a license plate, license plate relocation kit 32-0055 is available.
- STEP 3.** Remove lower air dam by removing six bolts from bottom of bumper. Save for later installation.
- STEP 4.** Determine passenger and driver brackets and install as shown. **NOTE:** If vehicle is equipped with optional tow hooks, they must be removed.
- STEP 5.** Temporarily attach Bull Bar to mount brackets as shown. Center and level. When centered, torque mount bracket to vehicle bolts to 55 Ft.Lbs.
- STEP 6.** Re-attach lower air dam and trim as necessary to fit around mount bracket and Bull Bar. It may be necessary to remove Bull Bar from brackets to fully attach lower air dam.
- STEP 7.** Re-attach Bull Bar to mount brackets using M12 serrated flange fasteners. Level and adjust Bull Bar as desired and tighten all fasteners. **SEE FIGURE 2.** Recommended torque values are 55 Ft. Lbs. for M12 fasteners.
- LIGHT INSTALLATION:** Insert threaded stud on base of the light through hole in cross tube. Using a ratchet, extension and socket for correct size of nut supplied, insert through large clearance hole in bottom of cross tube. Thread nut and washers on stud and tighten. **SEE FIGURE 1.** **NOTE:** A short socket, not a deep well works best to get the nut started.
- NOTE:** Fits most 6" round or rectangle lights. Some lights may require replacing included mount/isolator with rubber bumpers provided. Mounting stud of 1/2" or less required. Plug mount holes with caps provided if not installing lights.

## FINISH PROTECTION

Westin products have a high quality finish that must be cared for like any other exposed finish on the vehicle. Protect the finish with a non-abrasive automotive wax, (e.g. Pure Carnauba) on a regular basis. The use of any soap, polish or wax that contains an abrasive is detrimental, as the compounds scratch the finish and open it to corrosion.



**FIGURE 2** INSTALLATION VIEW OF DRIVER SIDE SHOWN, PASSENGER SIDE OPPOSITE