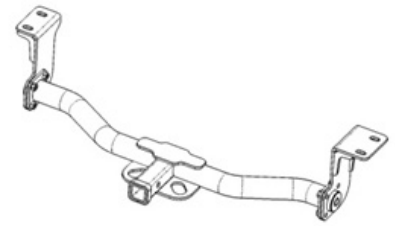




Class I Receiver Hitch

Part No. 69525B



Fits: 2012 - 2015

Toyota Prius

Gross Load Capacity	Max. Trailer Weight (lbs)	Max. tongue Weight (lbs)
Weight Carrying	2,000	200
Weight Distributing	N/A	N/A



60 min



CUTTING
REQUIRED



DRILLING NOT
REQUIRED



REMOVE CONTENTS FROM BOX. VERIFY ALL PARTS ARE PRESENT. READ INSTRUCTIONS CAREFULLY BEFORE STARTING INSTALLATION.



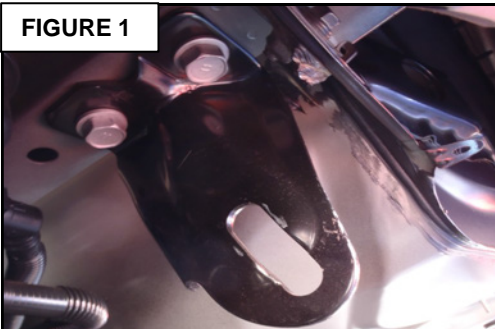
ALIGN THE HITCH AS DESIRED AND TIGHTEN ALL M10 FASTENERS TO 35- 40 ft.-lbs., AND ALL M12 FASTENERS TO 55 - 60 ft.-lbs.

PARTS LIST:

Item	Qty	Part Description	Tools Needed
1	1	Hitch assembly	16mm Socket
2	1	Driver side mounting bracket	17mm Socket
3	1	Passenger side mounting bracket	18mm Socket
4	4	M12 Hex cap screw	Ratchet
5	4	M12 Lock washer	Ratchet extension
6	4	M12 Flat washer	Flat blade screw driver
7	8	M10 Hex cap screw	Body saw
8	8	M10 Lock washer	Torque wrench
9	8	M10 Flat washer	

INSTALLATION PROCEDURE

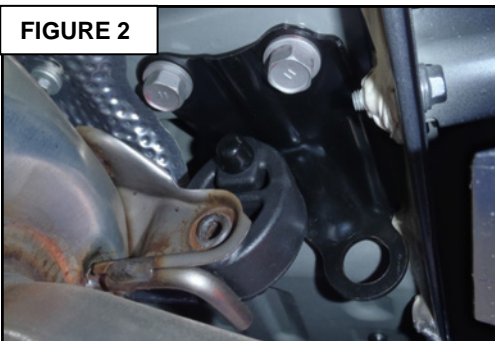
FIGURE 1



1. Remove rear splash shield.
2. Locate the driver side rear factory tow loop. Remove the tow loop by removing the two original 17mm hex cap screws. This will not be re-installed.

FIGURE 1

FIGURE 2



3. Locate the rear most exhaust muffler hanger. Remove the two original 17mm hex cap screws. Do not disassemble the exhaust hanger bracket from the muffler assembly. FIGURE 2

FIGURE 3

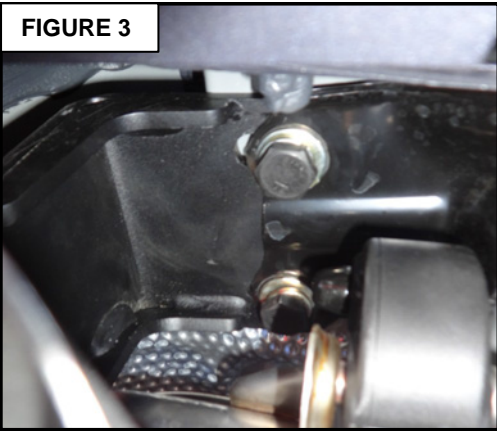


FIGURE 4

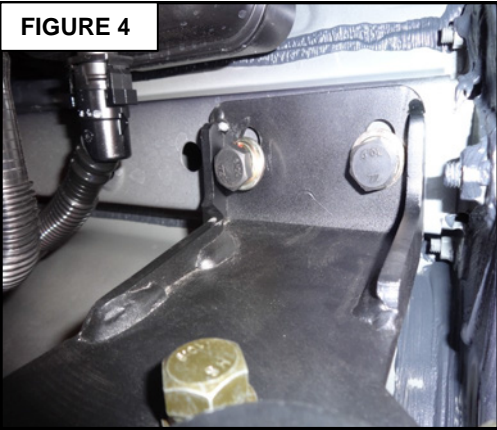


FIGURE 5

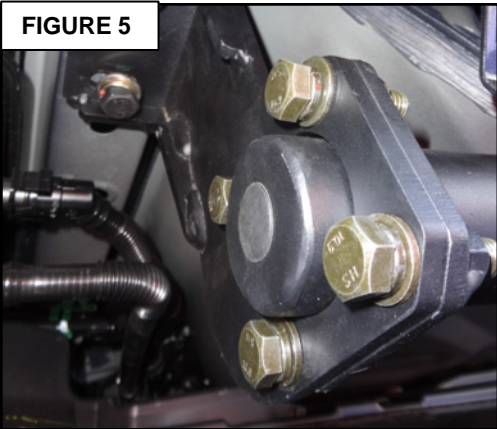
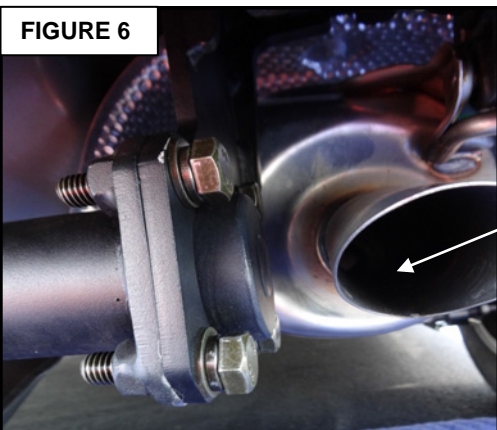


FIGURE 6



4. Attach the passenger side mounting bracket to the vehicle with the exhaust hanger bracket stacked below. Use (2) M12 hex cap screws (item 4), (2) M12 split lock washers (item 5), and (2) M12 flat washers (item 6) to fasten the bracket. Do not fully tighten at this time. **FIGURE 3**

5. Attach the driver side mounting bracket to the two threaded holes previously used by the original tow loop. Use (2) M12 hex cap screws (item 4), (2) M12 split lock washers, and (2) M12 flat washers (item 6) to fasten the bracket to the vehicle. Do not fully tighten at this time. **FIGURE 4**

6. Trim splash shield and re-install.

7. Attach the main hitch assembly to both mounting brackets using (8) M10 hex cap screws (item 7), (8) M10 split lock washers (item 8), and (8) M10 flat washers (item 9). Don not fully tighten at this time. **FIGURE 5 & 6**

8. Adjust hitch assembly as desired. During adjustment, allow sufficient clearance to the exhaust components. Tighten all M10 fasteners to 35-40 ft-lbs and all M12 fasteners to 55-60 ft-lbs.



WARNINGS & NOTICES FOR THE INSTALLATION OF RECEIVER HITCH



MAXIMUM TOWING/CARRYING CAPACITY:

Receiver Hitches will have a visible tow rating label affixed directly on the product.

User should never exceed the vehicle manufacturer's maximum tow and weight rating regardless of the capacity of the hitch.

FAILURE TO FOLLOW THESE GUIDELINES WILL VOID WARRANTY AND MAY RESULT IN PERSONAL INJURY AND/OR INJURY TO OTHERS AS WELL AS VEHICLE DAMAGE.

INSTALLATION:

Closely follow all Installation Instructions for the proper installation of product. Improper installation can result in death, serious injury, and/or product and vehicle damage.

In the operation of these products, it is imperative to observe precautions for your personal safety and the safety of others.

Failure to follow these instructions could lead to death, personal injury, and / or property damage. Do not modify this product.

FASTENERS:

All supplied fasteners must be utilized and installed in accordance with the installation instructions and apply torque to the specifications as defined.

DOUBLE CHECK ALL FASTENERS BEFORE INITIAL USE, AND PERIODICALLY IN THE FUTURE TO ENSURE PROPER FUNCTION AND SAFETY.

DRILLING:

Most products do not require drilling for installation. If drilling is defined as required, use caution when drilling a vehicle. FAILURE TO REVIEW AN AREA TO BE DRILLED MAY RESULT IN PERSONAL INJURY AND/OR INJURY TO OTHERS AS WELL AS VEHICLE DAMAGE.

EYE PROTECTION:

ALWAYS WEAR SAFETY GLASSES OR GOGGLES DURING THE INSTALLATION PROCESS TO AVOID PERSONAL INJURY.

PRODUCT CARE

- Look for Scratches and Pitting. Dents and dings will break through the powder coating and leave the bare metal open to the elements.
- Routinely check hitch for scratches or missing paint. When bare metal is showing, it is essential to touch up the hitch to prevent rusting.
- If you notice rust, you can lightly sand the hitch and touch it up with paint to stop the rust from growing.
- Use a Hitch Cover to keep moisture and road debris out of the receiver opening and inhibits rust from beginning inside hitch.

FAQ's

- **What's the difference between weight carrying & weight distribution?**
Weight Carrying is a towing situation where all of the tongue weight is carried directly on the rear of the tow vehicle and on the hitch. Weight Distribution is a towing situation whereby use of a weight distributing hitch, some or all of the tongue weight is evenly distributed throughout from the rear to the front of the tow vehicle.
- **Can I weld my hitch to the frame?**
Never weld a hitch to the frame. This can weaken both the hitch and the frame of your vehicle.
- **Will drilling in my frame void my warranty?**
Each vehicle manufacturer has specifics regarding their warranty. To determine if drilling or modifying your frame voids your warranty, it is best to call your local dealer, or contact the vehicle manufacturer.
- **Can I substitute the supplied hardware for a hitch with something else?**
Unless authorized by a professional installer or manufacturer of the product, substituting hardware that is supplied with the hitch is not recommended. Supplied hardware is tested to meet the capacity of the hitch, and substituting it out without authorization could void your warranty and cause the hitch to fail.
- **The hardware supplied is too large for my existing weld nuts in my vehicle frame; do I have the incorrect hardware?**
On vehicles that are more than a couple years old or that are used in a geographical location that truly experiences all four seasons, it is absolutely necessary to thoroughly clean the weld nuts. On newer vehicles excessive under body spray can also inhibit the bolt from threading. Use a penetrating lubricant to deteriorate the excessive rust that can accrue over years of travel over rain-soaked and salty roads. Then clean thoroughly with a wire brush until the bolt is allowed to thread cleanly into the weld nut.
- **What is a "fishwire"?**
A "fishwire" is a small wire device that allows you to "fish" or pull hardware through an enclosed frame or bumper tube.