



Class III Receiver Hitch

Part No. 69491B



Fits: 2007 - 2014
2007 - 2015

Ford Edge
Lincoln MKX

Gross Load Capacity	Max. Trailer Weight (lbs)	Max. tongue Weight (lbs)
Weight Carrying	4000	400
Weight Distributing	N/A	N/A



90 min



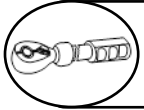
CUTTING NOT
REQUIRED



DRILLING NOT
REQUIRED



REMOVE CONTENTS FROM BOX. VERIFY ALL PARTS ARE PRESENT.
READ INSTRUCTIONS CAREFULLY BEFORE STARTING INSTALLATION.



ALIGN THE HITCH AS DESIRED AND TIGHTEN ALL M12 FASTENERS
TO 60 - 65 ft.-lbs.

PARTS LIST:

Item	Qty	Part Description	Tools Needed
1	1	Hitch assembly	18mm Socket
2	6	Spring lock washers	Ratchet
3	6	M12 Hex nut	Torque wrench
4	6	M12 Flat washer	8mm Socket
5	6	M12 Stud plate	Metal Shears
6	2	M12 Fish wire tool	1/2 - 9/16 Drill bit

INSTALLATION PROCEDURE

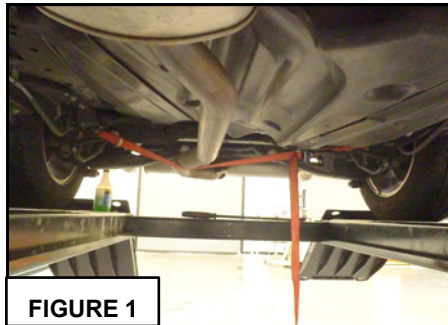


FIGURE 1

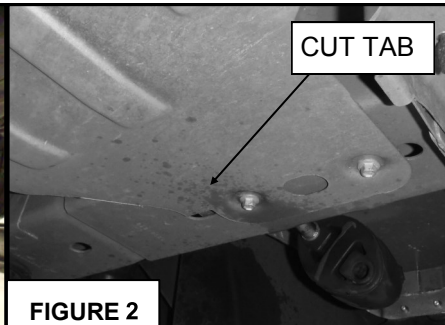


FIGURE 2

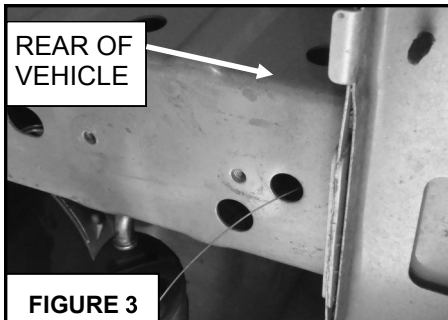


FIGURE 3



FIGURE 4

1. To ease installation, the rear portion of the exhaust system should be dropped. This can be accomplished by removing the three rear rubber exhaust hangers. A strap of some kind should be used on a forward portion of the exhaust to provide support to prevent damage. FIGURE 1
2. There are two silver colored steel plates that must be removed in order to proceed with the installation. These will be re-attached with the tabs trimmed. FIGURE 2
3. At the driver side uni-body channel. Guide one M12 stud plate into the two front most mounting hole through the rear of the uni-body channel using the provided M12 fish-wire tool. Perform for both the driver and passenger side channels. FIGURE 3,4
4. The tabs for the steel plates need to be trimmed to allow access to the rear most holes. The plate can then be reinstalled using the remaining factory screws.

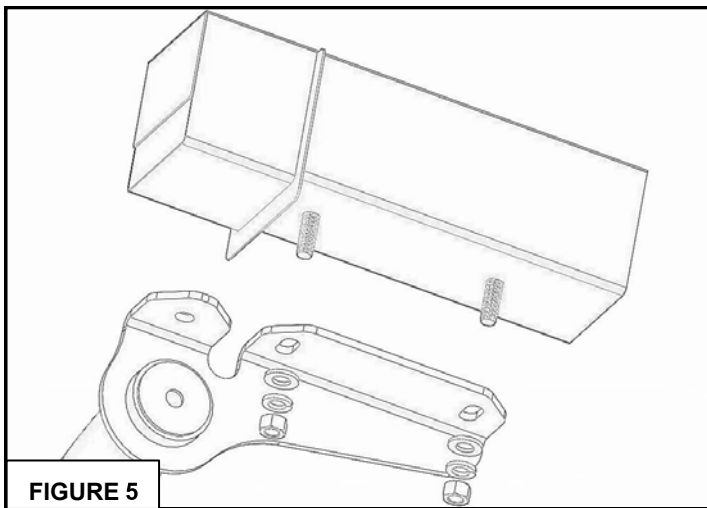


FIGURE 5

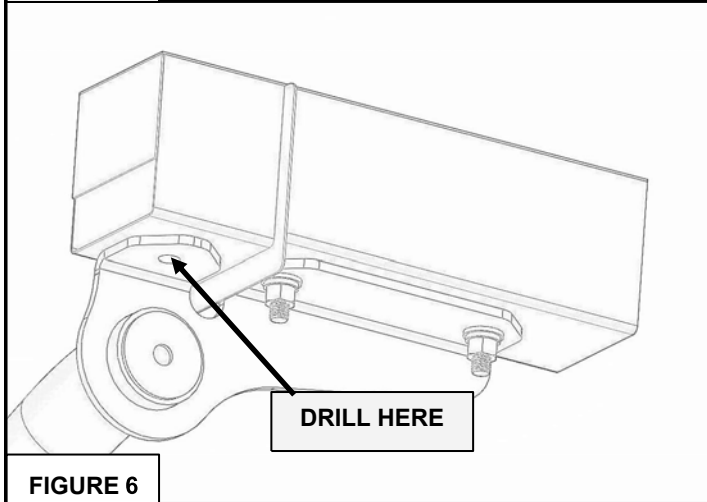


FIGURE 6

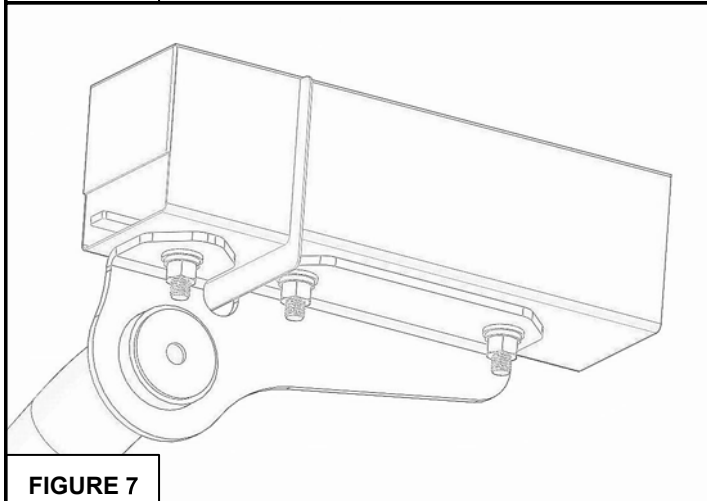


FIGURE 7



FIGURE 8

5. The hitch assembly can now be raised to the uni-body channels. Fasten the hitch to the already in-stalled stud plates with the provided M12 flat wash-ers, split lock washers and hex nuts. No not fully tighten at this time. FIGURE 5,6.

6. At the rearmost holes of the hitch assembly, Drill a 1/2"-9/16" hole through the hitch bracket and the uni-body sheet metal. Then an additional M12 stud plate can be placed inside each channel. Fasten each side with the provided M12 flat washer, split lock washer, and hex nut. FIGURE 7.

7. Align the hitch assembly as desired then torque all M12 hex nuts to 60-65 lbs-ft. The exhaust can now be re-attached to the chassis using the original rubber hangers. FIGURE 8.



WARNINGS & NOTICES FOR THE INSTALLATION OF RECEIVER HITCH



MAXIMUM TOWING/CARRYING CAPACITY:

Receiver Hitches will have a visible tow rating label affixed directly on the product.

User should never exceed the vehicle manufacturer's maximum tow and weight rating regardless of the capacity of the hitch.

FAILURE TO FOLLOW THESE GUIDELINES WILL VOID WARRANTY AND MAY RESULT IN PERSONAL INJURY AND/OR INJURY TO OTHERS AS WELL AS VEHICLE DAMAGE.

INSTALLATION:

Closely follow all Installation Instructions for the proper installation of product. Improper installation can result in death, serious injury, and/or product and vehicle damage.

In the operation of these products, it is imperative to observe precautions for your personal safety and the safety of others.

Failure to follow these instructions could lead to death, personal injury, and / or property damage. Do not modify this product.

FASTENERS:

All supplied fasteners must be utilized and installed in accordance with the installation instructions and apply torque to the specifications as defined.

DOUBLE CHECK ALL FASTENERS BEFORE INITIAL USE, AND PERIODICALLY IN THE FUTURE TO ENSURE PROPER FUNCTION AND SAFETY.

DRILLING:

Most products do not require drilling for installation. If drilling is defined as required, use caution when drilling a vehicle. FAILURE TO REVIEW AN AREA TO BE DRILLED MAY RESULT IN PERSONAL INJURY AND/OR INJURY TO OTHERS AS WELL AS VEHICLE DAMAGE.

EYE PROTECTION:

ALWAYS WEAR SAFETY GLASSES OR GOGGLES DURING THE INSTALLATION PROCESS TO AVOID PERSONAL INJURY.

PRODUCT CARE

- Look for Scratches and Pitting. Dents and dings will break through the powder coating and leave the bare metal open to the elements.
- Routinely check hitch for scratches or missing paint. When bare metal is showing, it is essential to touch up the hitch to prevent rusting.
- If you notice rust, you can lightly sand the hitch and touch it up with paint to stop the rust from growing.
- Use a Hitch Cover to keep moisture and road debris out of the receiver opening and inhibits rust from beginning inside hitch.

FAQ's

- **What's the difference between weight carrying & weight distribution?**
Weight Carrying is a towing situation where all of the tongue weight is carried directly on the rear of the tow vehicle and on the hitch. Weight Distribution is a towing situation whereby use of a weight distributing hitch, some or all of the tongue weight is evenly distributed throughout from the rear to the front of the tow vehicle.
- **Can I weld my hitch to the frame?**
Never weld a hitch to the frame. This can weaken both the hitch and the frame of your vehicle.
- **Will drilling in my frame void my warranty?**
Each vehicle manufacturer has specifics regarding their warranty. To determine if drilling or modifying your frame voids your warranty, it is best to call your local dealer, or contact the vehicle manufacturer.
- **Can I substitute the supplied hardware for a hitch with something else?**
Unless authorized by a professional installer or manufacturer of the product, substituting hardware that is supplied with the hitch is not recommended. Supplied hardware is tested to meet the capacity of the hitch, and substituting it out without authorization could void your warranty and cause the hitch to fail.
- **The hardware supplied is too large for my existing weld nuts in my vehicle frame; do I have the incorrect hardware?**
On vehicles that are more than a couple years old or that are used in a geographical location that truly experiences all four seasons, it is absolutely necessary to thoroughly clean the weld nuts. On newer vehicles excessive under body spray can also inhibit the bolt from threading. Use a penetrating lubricant to deteriorate the excessive rust that can accrue over years of travel over rain-soaked and salty roads. Then clean thoroughly with a wire brush until the bolt is allowed to thread cleanly into the weld nut.
- **What is a "fishwire"?**
A "fishwire" is a small wire device that allows you to "fish" or pull hardware through an enclosed frame or bumper tube.