

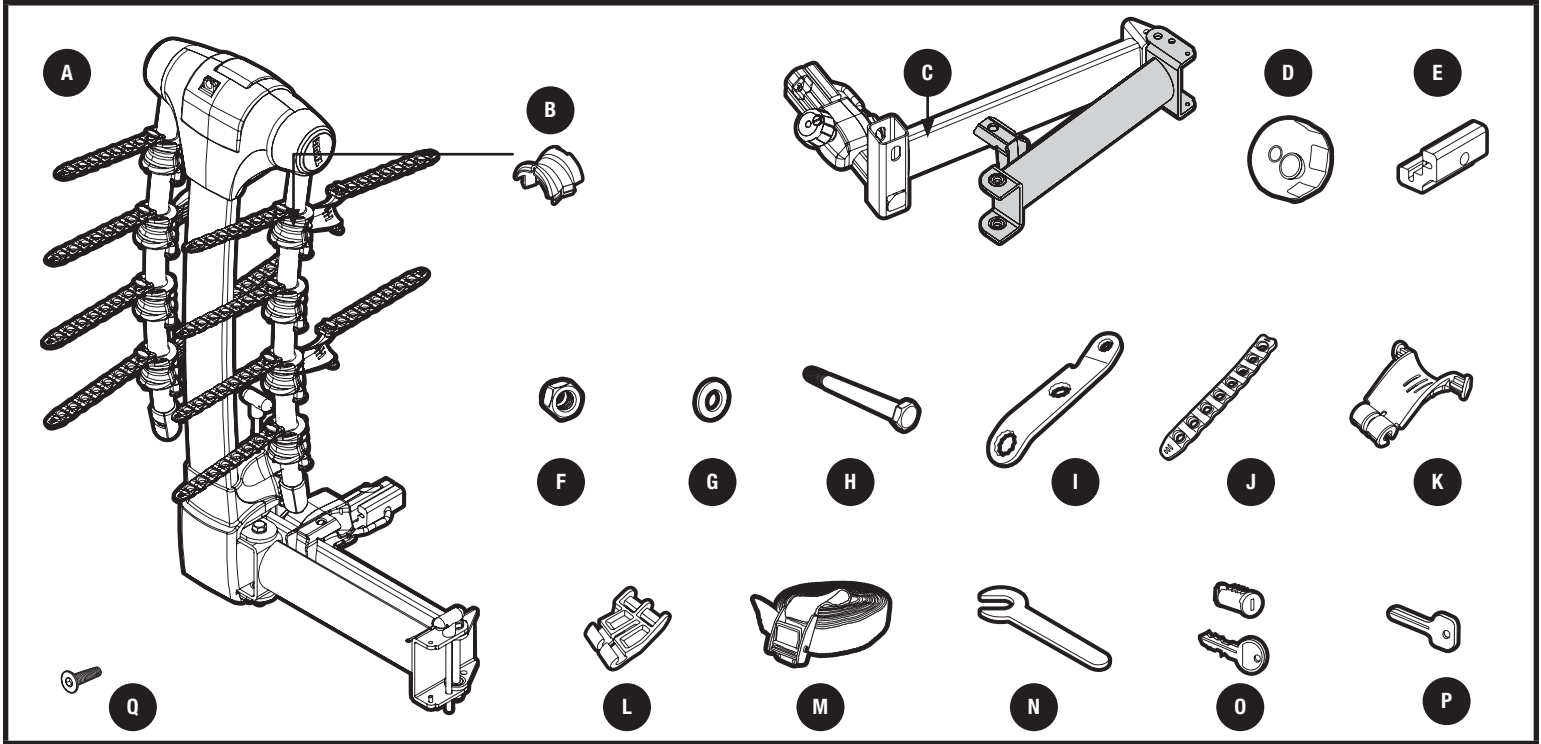
DO

- Attach swing arm and upright assembly as shown (STEP 1).
- Pull back on Auto Pin to engage in receiver hole. Use knob to tighten. Lock (STEP 3).
- Load heaviest bike first - front to the right (STEP 7).
- Alternate bike direction.
- Secure bicycle to rack with rubber straps and black safety strap through the frames and around the mast of the rack (STEP 9).
- Check tightness of all bolts and knobs periodically (every 6 months).
- Check rubber straps for wear and replace if worn.

DO NOT

- Install on a trailer or other towed vehicle.
- Put more than 2 bikes on a class 1 hitch.
- Do not "overstretch" the straps.
- Use the rack while traveling on dirt roads.
- Use the rack to carry tandems or recumbents.
- Put more than the intended number of bikes on the rack.

PARTS INCLUDED

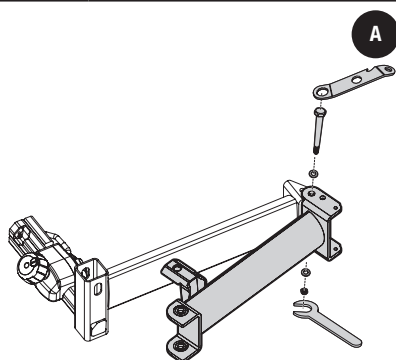


part	description	part number	qty.
A	Apex Swing Bike Carrier /	—	1
B	cradle overmold /	8523503001	8
C	swing arm assembly /	—	1
D	M8 lock knob /	753190902	1
E	Apex 2" hitch adaptor /	8523134001	1
F	1/2" lock nut /	853558402	2
G	washer 12mm /	951122454	4
H	1/2 - 13 bolt x 5.5" /	8535583	2
I	hitch tool /	8535524	1
J	ripple strap /	8523006001	12
K	anti-sway with overmold /	8523037001	4
L	anti-sway angled extension /	8523108001	2
M	buckle strap /	753203017	1
N	.75 open end wrench /	8523138001	1
O	lock, 2 cylinders, 2 keys per each part /	—	—
P	lock cylinder change key /	8531251	1
Q	M8 X 30 flat head screw /	8523136001	2

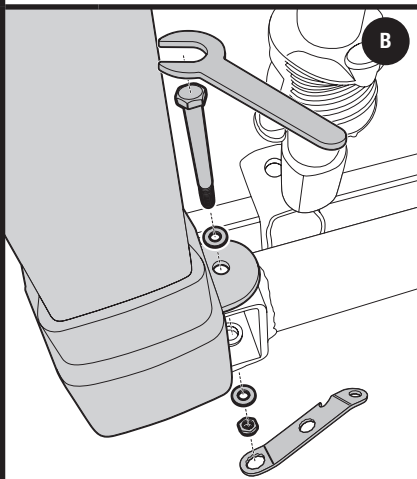
- Number of bicycles should not exceed designated carrying capacity for your specific Apex Swing Away.
- 9027 (4 bike) max carrying capacity = 140 lbs.
- Check tightness of all bolts and knobs periodically.
- Check straps for wear and replace if worn.
- Not intended for off-road use.
- Not intended for tandems or recumbents.
- Failure to use strap may result in loss of bicycles.
- Your vehicle must be equipped with a 2" receiver.

1

CARRIER ASSEMBLY /



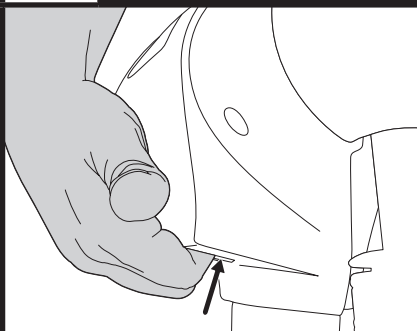
- Position stinger assembly in bracket of swing arm assembly as illustrated.
- Install 1/2 – 13 x 5.5" bolt, flat washer and lock nut as illustrated.
- Tighten firmly using Thule tools provided.



- Position upright assembly in swing arm assembly bracket as illustrated.
- Engage lock-up pin and loosely thread lower locking handle.
- Install 1/2 – 13 x 5.5" bolt, flat washer and lock nut as illustrated.
- Tighten firmly using Thule tools provided.

2

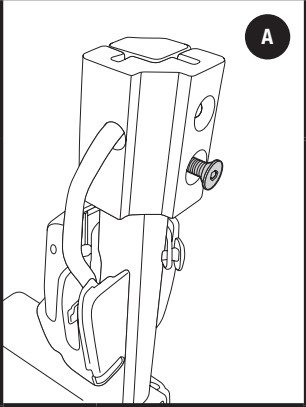
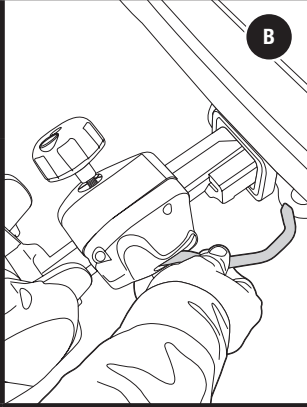
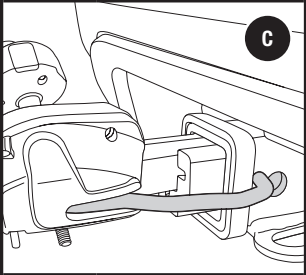
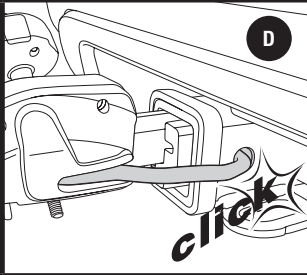
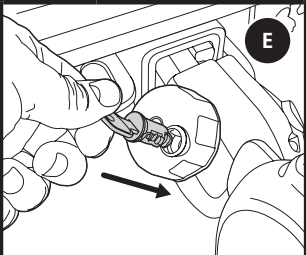
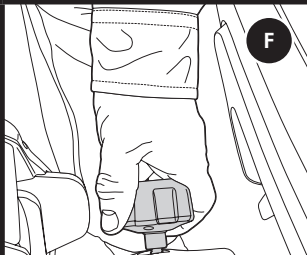
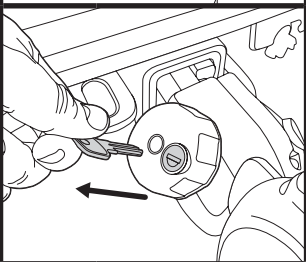
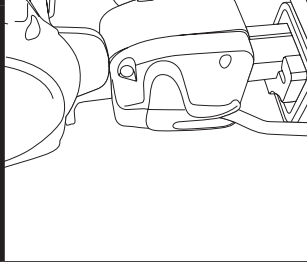
TRANSPORTING CARRIER /



- Carrier can be easily handled / carried using handhold at the back of the carrier.

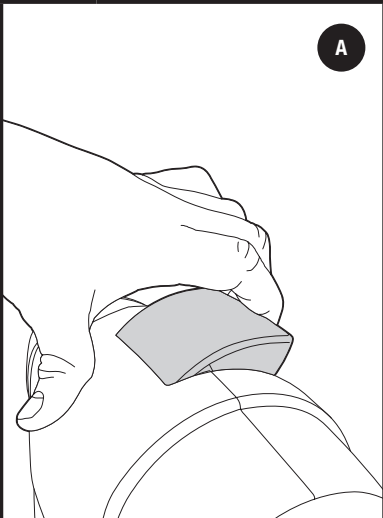
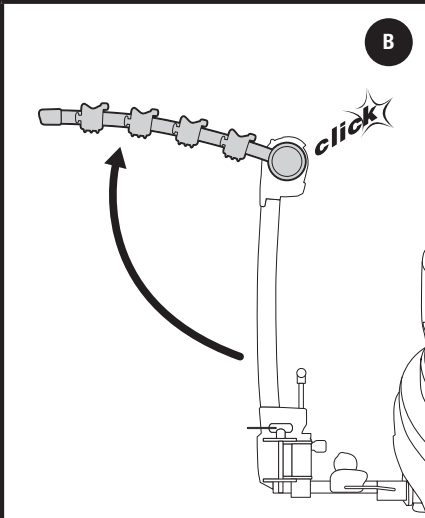
3

STINGER INSTALLATION /

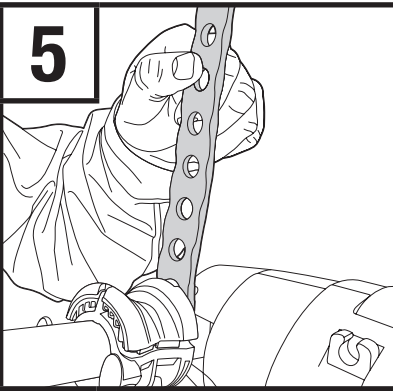
 <p>A</p>	<p>FOR 2" RECEIVERS ATTACH 2" ADAPTER</p> <ul style="list-style-type: none">Using hex key attach adapter sleeve to stinger with two M8 x 30 flat head screws.	 <p>B</p>	<ul style="list-style-type: none">Attach carrier to receiver by pulling back gently on Auto Pin while sliding stinger into receiver.
 <p>C</p>	<ul style="list-style-type: none">Once Auto Pin clears receiver lip, release Auto Pin so that it rests against receiver.	 <p>D</p> <p><i>click</i></p>	<ul style="list-style-type: none">Push carrier in until Auto Pin engages with the receiver hole as illustrated.
 <p>E</p>	<ul style="list-style-type: none">Install lock cylinder into lock knob on stinger assembly with Change Key.	 <p>F</p>	<ul style="list-style-type: none">Firmly tighten locking knob to secure carrier in receiver.
	<p>NOTE: Knob will not tighten fully without lock cylinder inserted.</p>		

4

BICYCLE TRANSPORTATION /

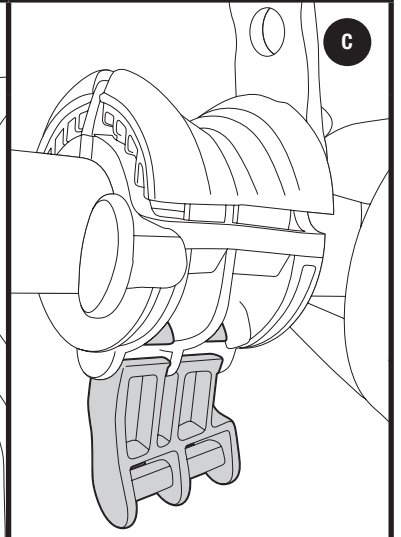
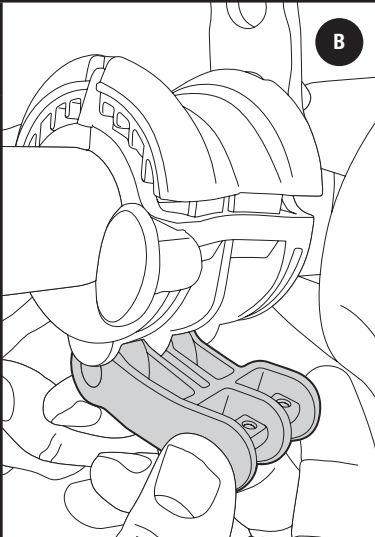
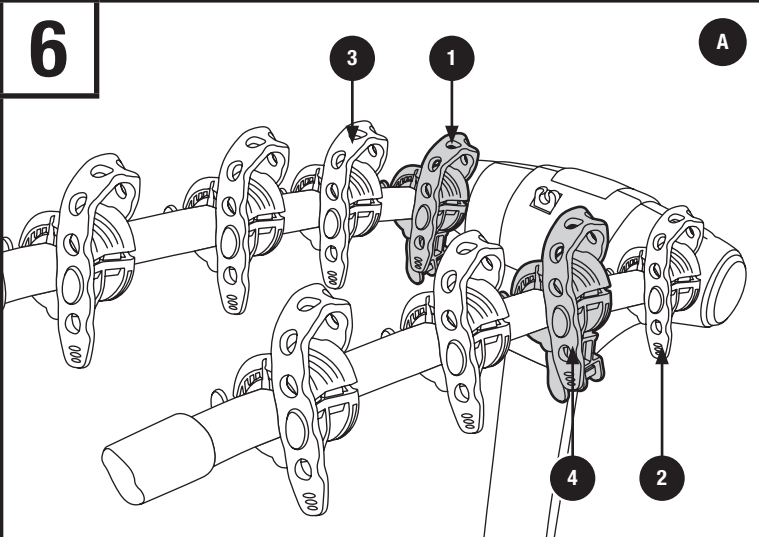
 <p>A</p>	<ul style="list-style-type: none">Lift Hitch Switch Lever as illustrated.	 <p>B</p> <p><i>click</i></p>	<ul style="list-style-type: none">With the other hand lift bike arm assembly upward until the Hitch Switch "clicks" into position.Reverse operation to store or when traveling with no bike attached.
--	---	--	--

5



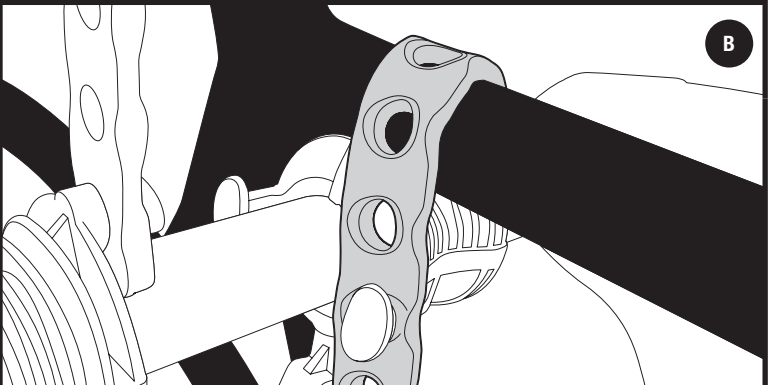
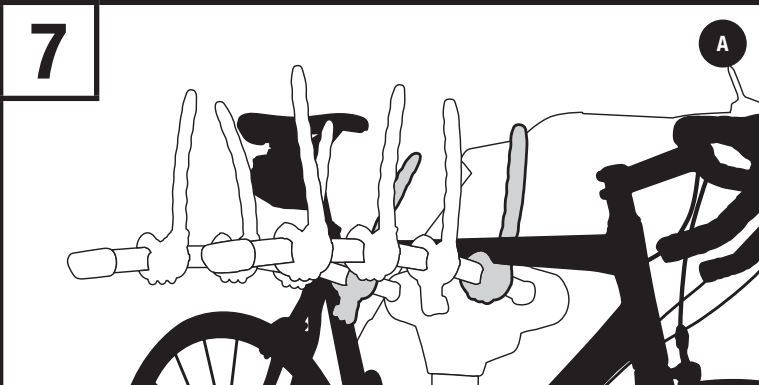
- Attach cradle straps to cradles and anti-sway cages.

6



- Attach anti-sway angled extension to underside of cradles 1 and 4 as illustrated.

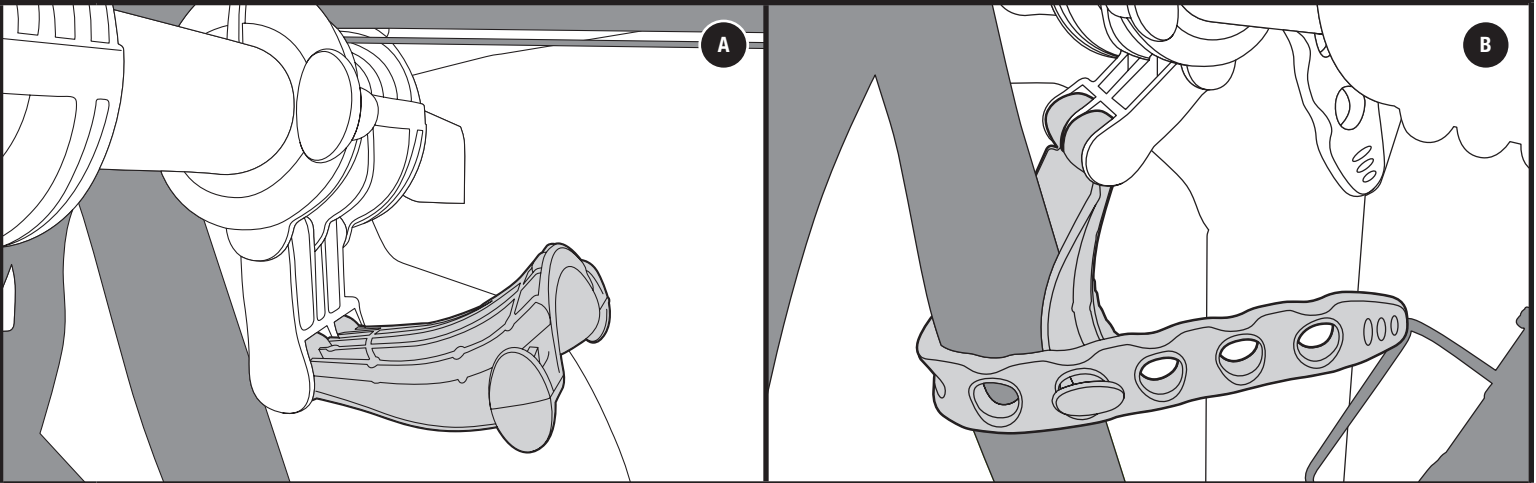
7



- Load heaviest bike first onto the inner most cradles - handle bars facing passenger side of vehicle.
- Fasten cradle straps.
- Use Thule Frame Adaptor (#982XT, sold separately) for bikes without traditional top tubes.

8

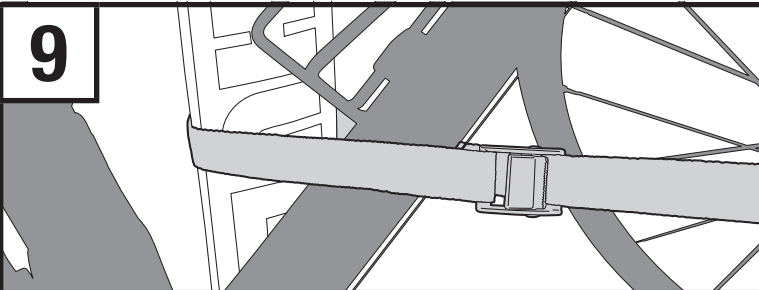
ATTACHING HOLD FAST ANTI-SWAY CAGES



- To attach anti-sway cage, hold horizontal with smooth edge facing down and slide C-slot opening onto Anti-Sway Extension / Cradle. Swing down to vertical position. Place smooth curved surface against bicycle and attach strap as shown.

- Mount bikes in alternate directions.

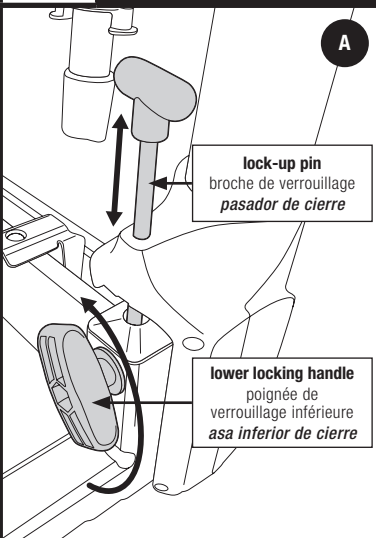
9



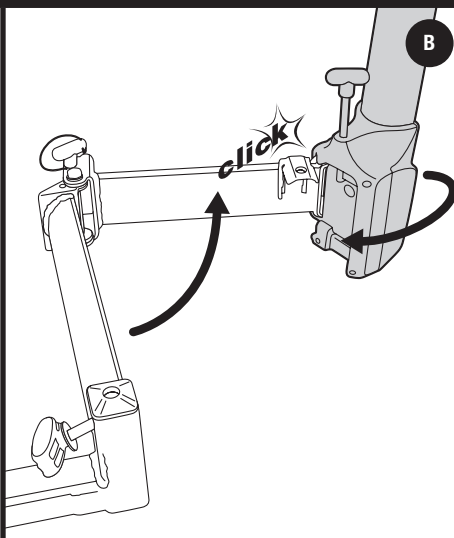
- Secure bikes to mast of carrier with black strap.

10

REAR COMPARTMENT ACCESS /



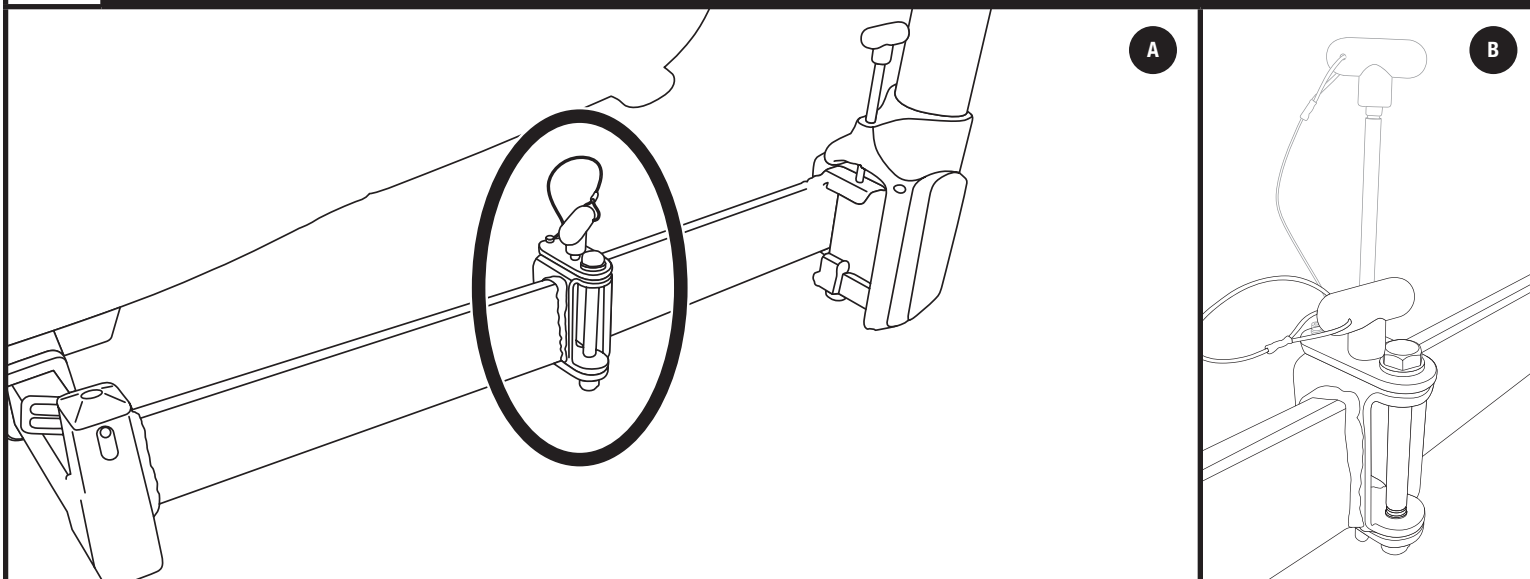
- Loosen lower locking handle completely and pull pin to open carrier.



- While pushing bottom half of bike arm assembly open, rotate upright assembly as illustrated. In full open position lock-up pin will engage bracket.

11

OPENING CARRIER /

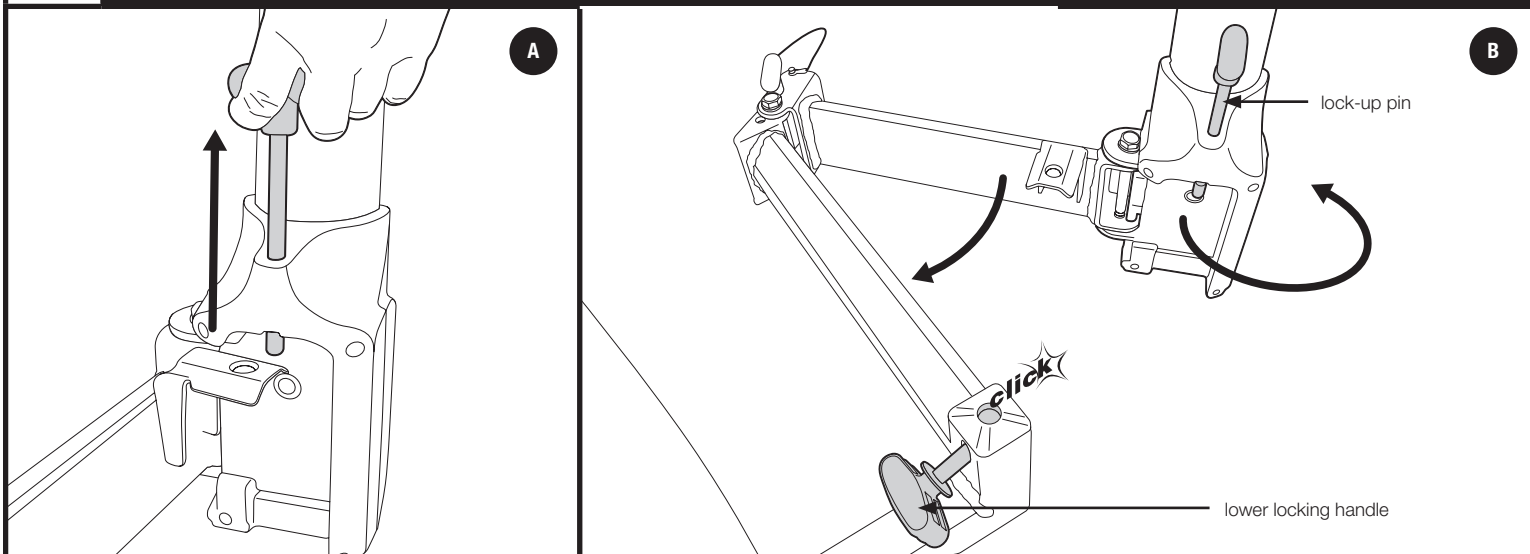


- Insert hold-open pin into locking position when fully open to prevent carrier from swinging closed.

hold-open pin

12

CLOSING CARRIER /



- Pull Lock-up pin to release upper arm assembly and rotate bike arms to stop position.

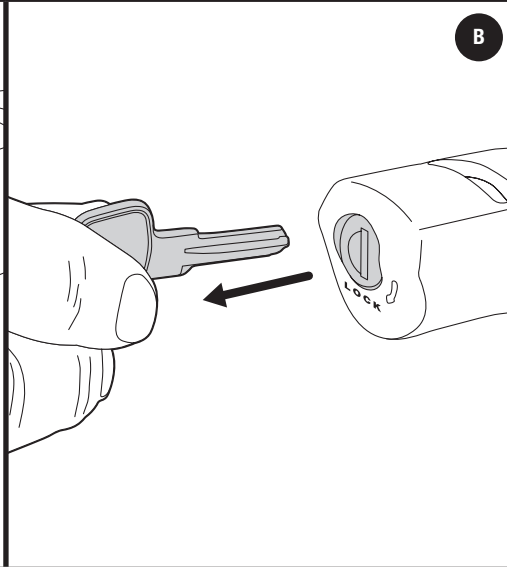
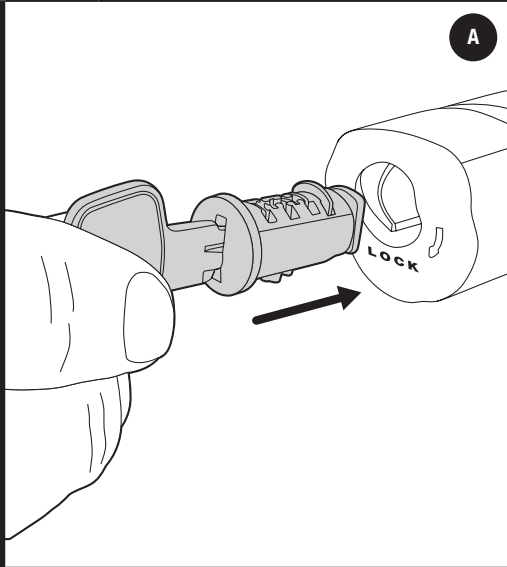
- Close carrier. Lock-up pin will click into closed position.

- Tighten lower locking handle firmly.

WARNING:

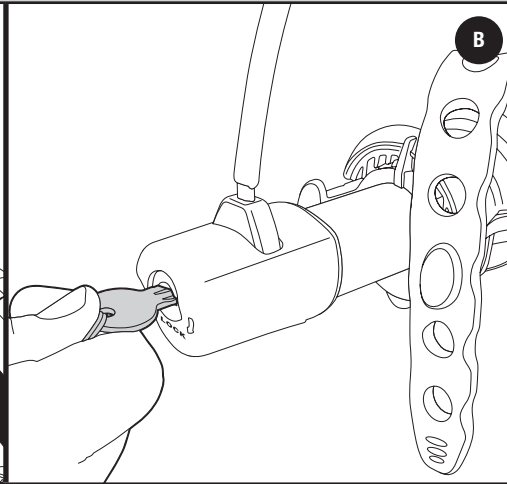
Before operating your vehicle, tighten locking handle firmly.

INSTALLING END CAP LOCK CORE



- Install lock cylinder into locking end cap with Change Key.

USING LOCKING CABLE /



- Lock bikes to carrier with cable lock.