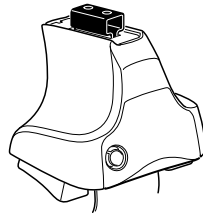
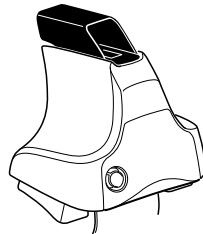
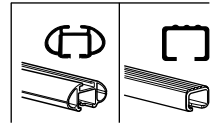


Kit 1656

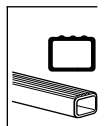
JEEP Grand Cherokee, 5-dr SUV, 11-



754 Rapid System
480R Rapid Traverse (North America)



480 Traverse (North America)



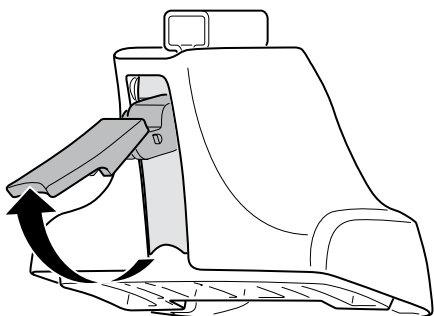
754 Rapid System
 480R Rapid Traverse (North America)

754 Rapid System
 480R Rapid Traverse (North America)
 480 Traverse (North America)

(North America)

1114 x4
 162 x2
 204 x1
 206 x1

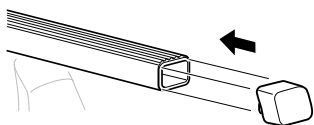
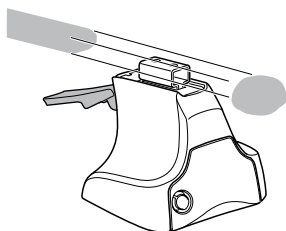
1



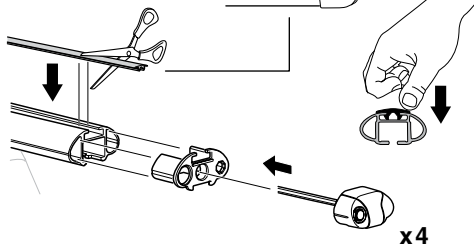
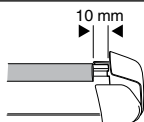
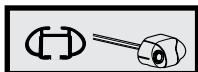
2



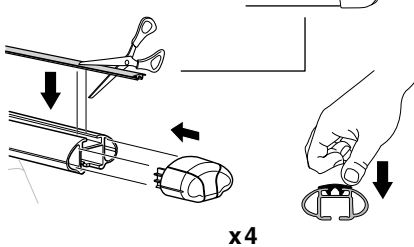
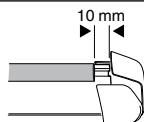
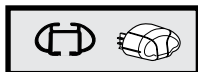
754 Rapid System
480R Rapid Traverse
(North America)



x4



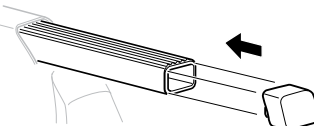
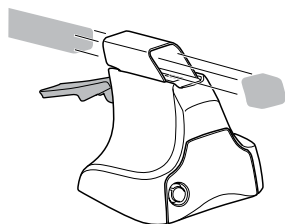
x4



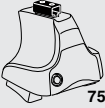
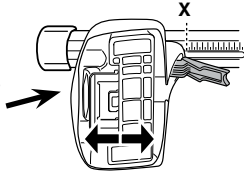
x4



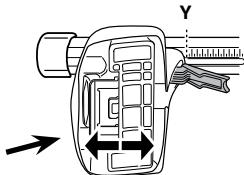
480 Traverse
(North America)



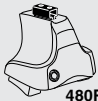
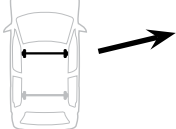
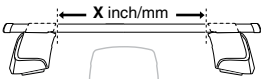
x4

3**754** Rapid System

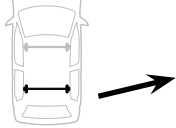
	X
JEEP Grand Cherokee, 5-dr SUV, 11-	56



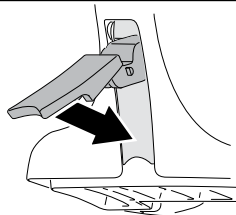
	Y
JEEP Grand Cherokee, 5-dr SUV, 11-	53

3**480R** Rapid Traverse**480** Traverse**(North America)**

	X inch	X mm
JEEP Grand Cherokee, 5-dr SUV, 11-	47 ⁵/₈"	1211 mm

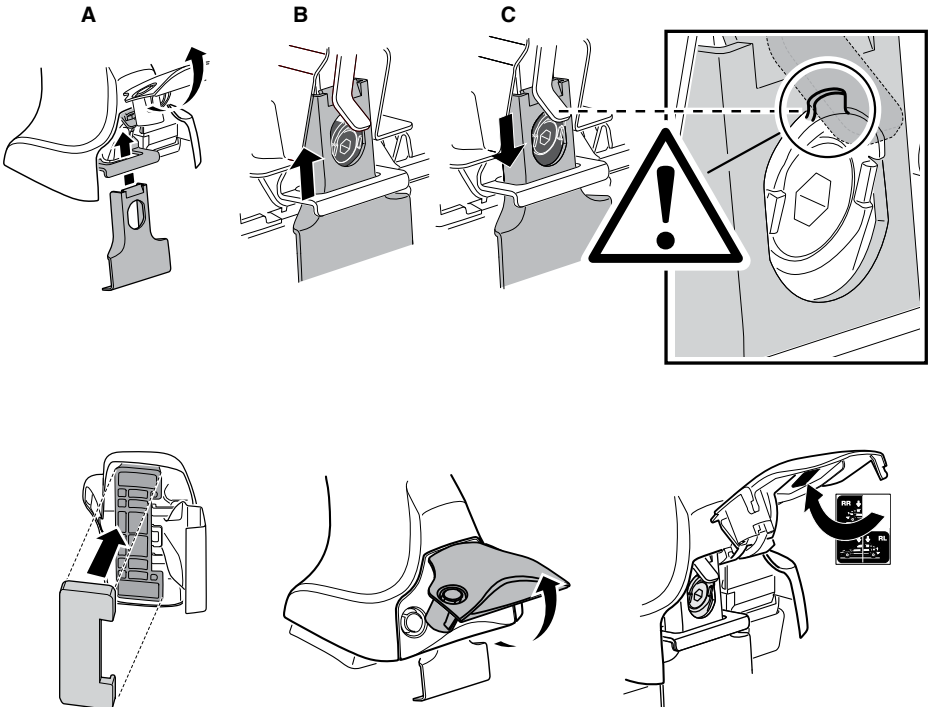
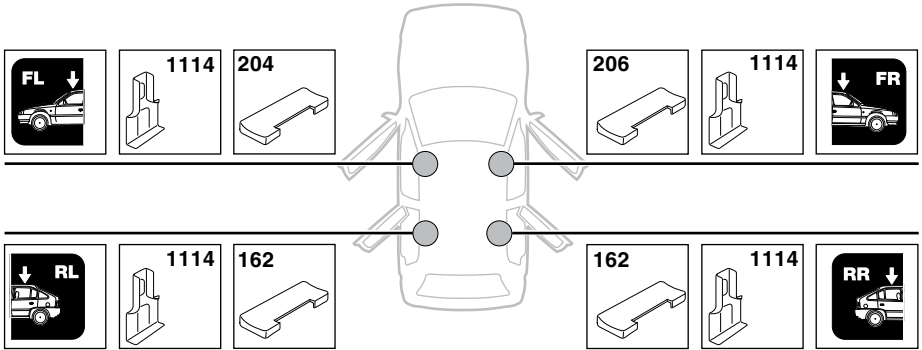


	Y inch	Y mm
JEEP Grand Cherokee, 5-dr SUV, 11-	46 ¹/₂"	1181 mm

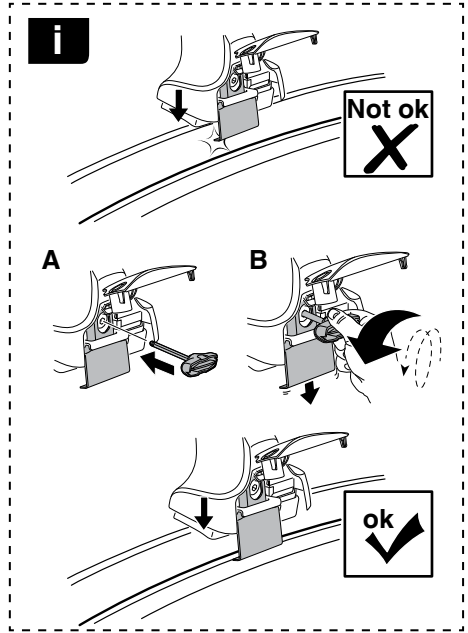
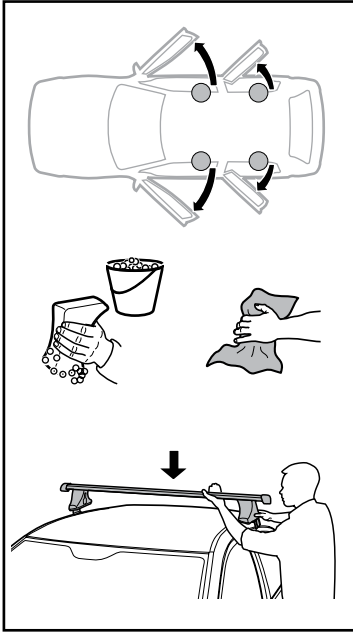
4

5

JEEP Grand Cherokee, 5-dr SUV, 11-



6



JEEP Grand Cherokee, 5-dr SUV, 11-

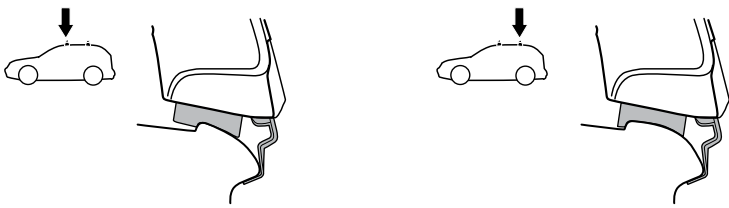
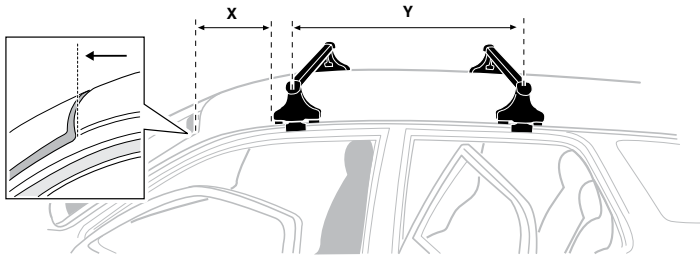
X mm Y mm X inch Y inch

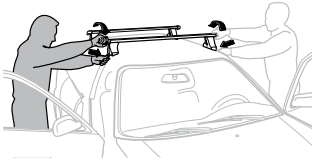
254 mm

800 mm

10"

31 1/2"



7

GB/US Tighten alternately
D Die Schrauben abwechselnd anziehen
F Serrer alternativement chaque côté
NL Afwisselend aan de linker- en de rechterkant aandraaien
I Alternare il serraggio delle viti
E Apertar alternativamente
PT Aperte alternadamente
S Dra åt växelvis
FIN Kierrä vuorotellen
EST Pinguldage vaheldumisi
LAT Pieļieciet pamišus
LIT Užsukinėkite pakaitomis
PL Śruby dokręcaj naprzemiennie
RU Затягивайте попеременно

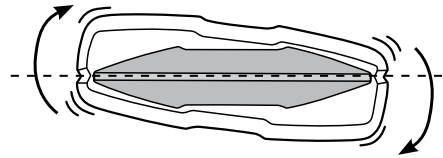
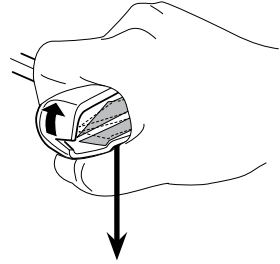
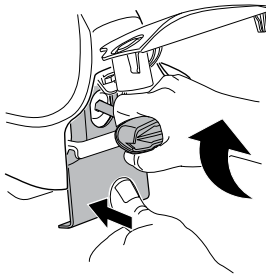
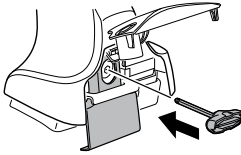
CZ Pokręťta bagażnika dokręcaj naprzemiennie.
SK Dofahajte striedavo
SLO Privijajte izmenično.
HR Naizmjenočno zategnite
HU Egymástól függetlenül szorítandó
GR Σφιγίγεται εναλλάξ
TR Dönüşümlü sıkın

中文 交替拧紧

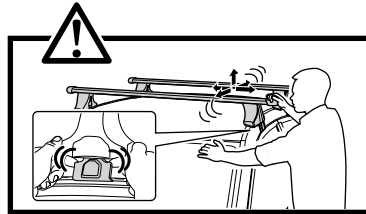
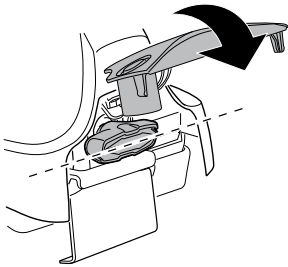
한국어 번갈아 가며 조이십시오.

日本語 交互に締め付けてください。

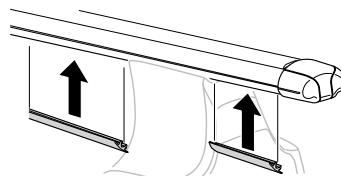
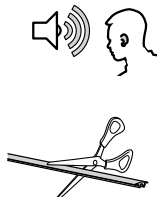
ไทย ชันในแบบสลับ

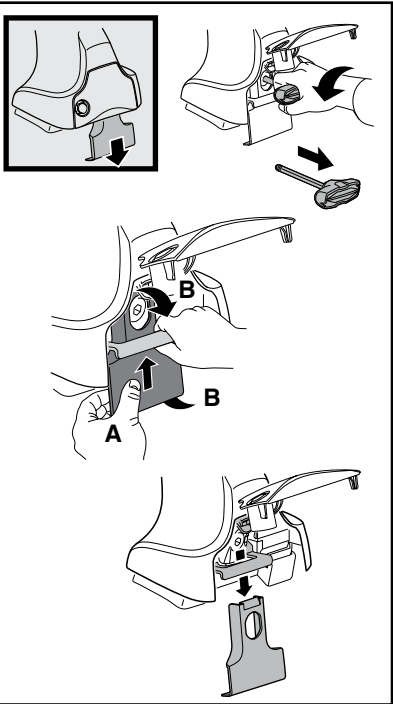
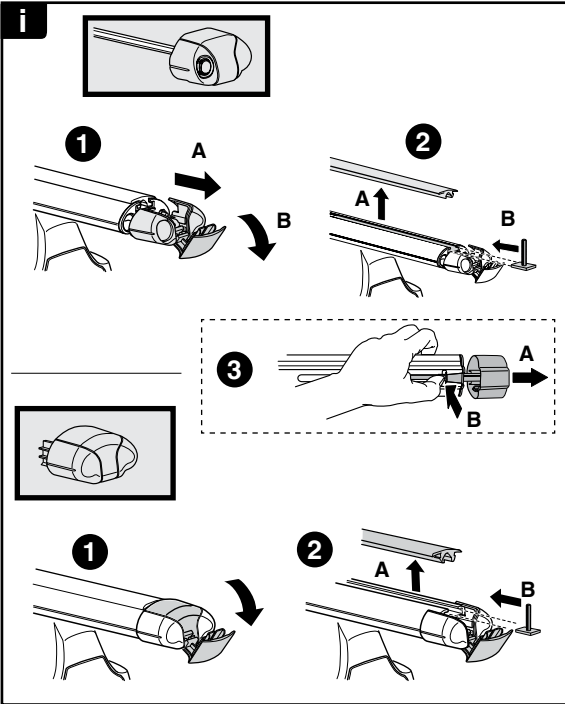
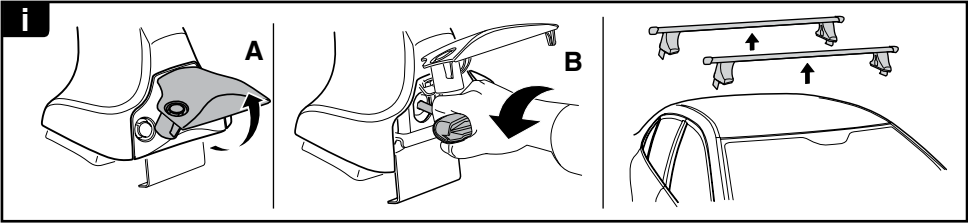


≈ 3 Nm

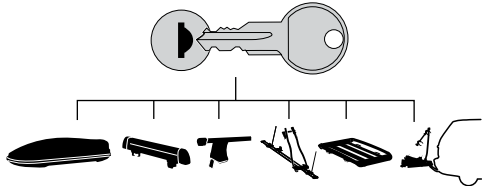
**8**

x1
17 mm





THULE
SWEDEN
**ONE
KEY
SYSTEM**



	544 (x4)
	596 (x6)
	588 (x8)
	NA 510 (x10)
	EUR 452 (x12)
	ASIA

