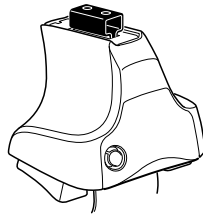
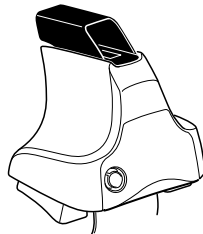
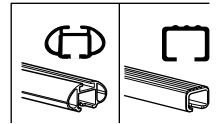


Kit 1532

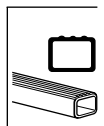
- CHEVROLET Silverado**, 2-dr Standard Cab, 07–
- CHEVROLET Silverado**, 4-dr Extended Cab, 07–
- CHEVROLET Silverado**, 4-dr Crew Cab, 07–
- GMC Sierra**, 2-dr Standard Cab, 07–
- GMC Sierra**, 4-dr Extended Cab, 07–
- GMC Sierra**, 4-dr Crew Cab, 07–



754 Rapid System
480R Rapid Traverse (North America)



480 Traverse (North America)

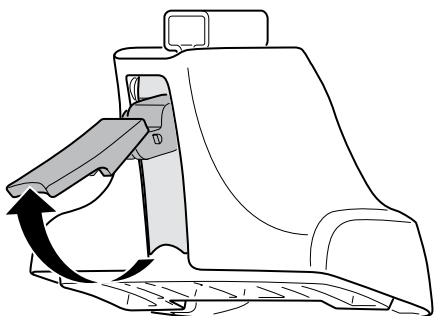


- 754 Rapid System: x1 (box), x4 (cubes), x4 (754 Rapid Traverse (North America) units), x4 (screws)
- 480R Rapid Traverse (North America): x1 (ruler), x4 (480R Rapid Traverse (North America) units), x4 (screws), x4 (cubes)
- 480 Traverse (North America): x1 (ruler), x4 (480 Traverse (North America) units), x4 (screws), x4 (cubes)

- Bar: x2
- Hardware: x2 (23 mm), x2 (23 mm), x4 (screws), x4 (screws)
- Hardware: x1 (17 mm), x2 (23 mm), x2 (23 mm), x4 (nuts)
- (North America): x2 (23 mm), x2 (23 mm), x2 (23 mm), x2 (cubes)

- Bracket: x4 (1042)
- Bracket: x4 (65)
- Diagram: x1 (with RR, FR, FL, RL labels)

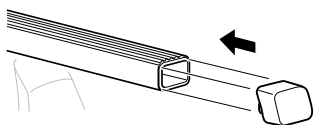
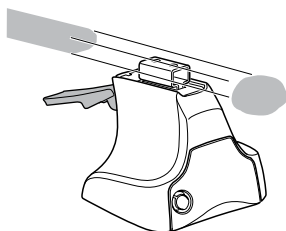
1



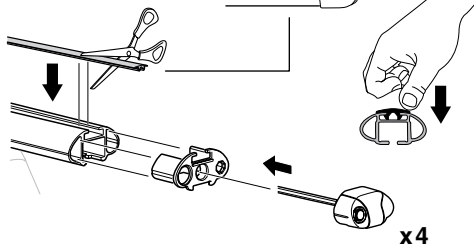
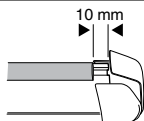
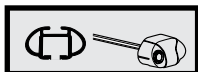
2



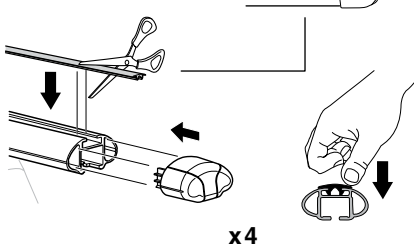
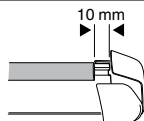
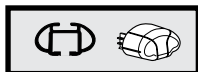
754 Rapid System
480R Rapid Traverse
(North America)



x4



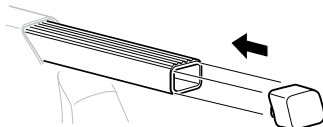
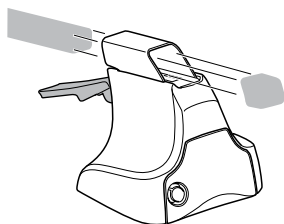
x4



x4

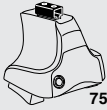


480 Traverse
(North America)

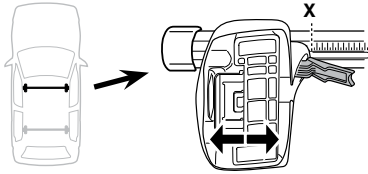


x4

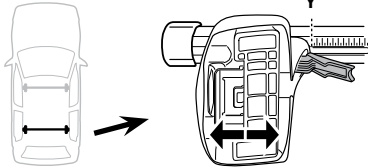
3



754 Rapid System



	X
CHEVROLET Silverado, 2-dr Standard Cab, 07-	51
CHEVROLET Silverado, 4-dr Extended Cab, 07-	51
CHEVROLET Silverado, 4-dr Crew Cab, 07-	51
GMC Sierra, 2-dr Standard Cab, 07-	51
GMC Sierra, 4-dr Extended Cab, 07-	51
GMC Sierra, 4-dr Crew Cab, 07-	51



	Y
CHEVROLET Silverado, 2-dr Standard Cab, 07-	50,5
CHEVROLET Silverado, 4-dr Extended Cab, 07-	50,5
CHEVROLET Silverado, 4-dr Crew Cab, 07-	50,5
GMC Sierra, 2-dr Standard Cab, 07-	50,5
GMC Sierra, 4-dr Extended Cab, 07-	50,5
GMC Sierra, 4-dr Crew Cab, 07-	50,5

3



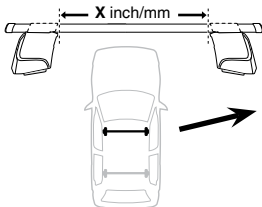
480R Rapid Traverse



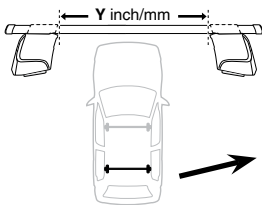
480 Traverse



(North America)

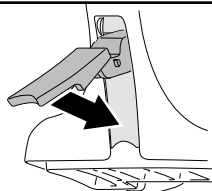


	X inch	X mm
CHEVROLET Silverado, 2-dr Standard Cab, 07-	45 3/4"	1161 mm
CHEVROLET Silverado, 4-dr Extended Cab, 07-	45 3/4"	1161 mm
CHEVROLET Silverado, 4-dr Crew Cab, 07-	45 3/4"	1161 mm
GMC Sierra, 2-dr Standard Cab, 07-	45 3/4"	1161 mm
GMC Sierra, 4-dr Extended Cab, 07-	45 3/4"	1161 mm
GMC Sierra, 4-dr Crew Cab, 07-	45 3/4"	1161 mm



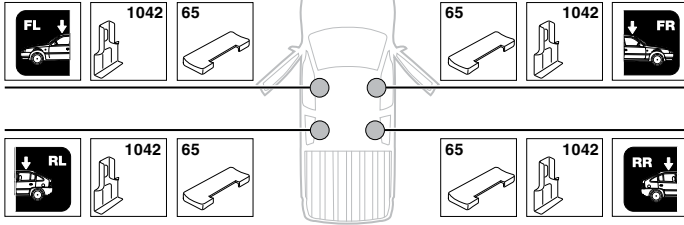
	Y inch	Y mm
CHEVROLET Silverado, 2-dr Standard Cab, 07-	45 1/2"	1156 mm
CHEVROLET Silverado, 4-dr Extended Cab, 07-	45 1/2"	1156 mm
CHEVROLET Silverado, 4-dr Crew Cab, 07-	45 1/2"	1156 mm
GMC Sierra, 2-dr Standard Cab, 07-	45 1/2"	1156 mm
GMC Sierra, 4-dr Extended Cab, 07-	45 1/2"	1156 mm
GMC Sierra, 4-dr Crew Cab, 07-	45 1/2"	1156 mm

4

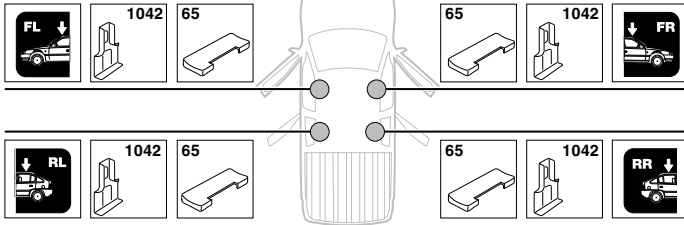
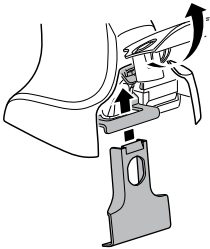
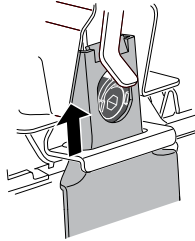
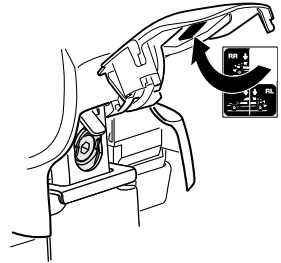
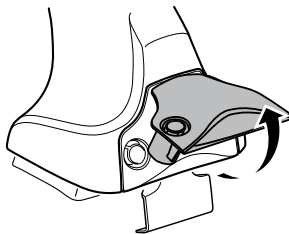
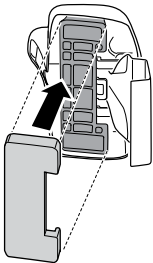
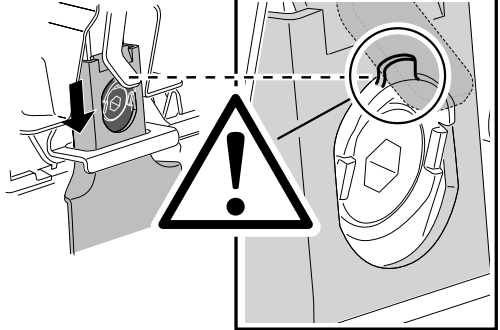


5

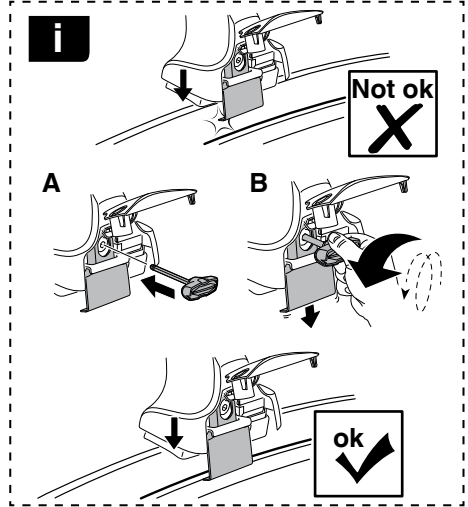
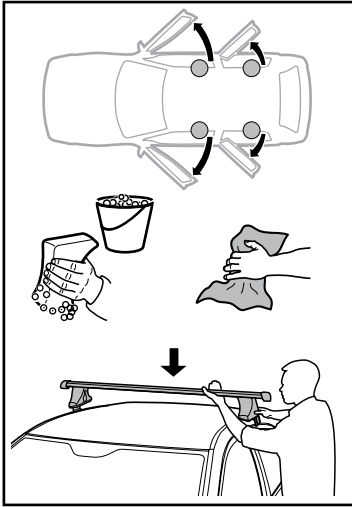
CHEVROLET Silverado, 2-dr Standard Cab, 07–
GMC Sierra, 2-dr Standard Cab, 07–



CHEVROLET Silverado, 4-dr Extended cab, 07–
CHEVROLET Silverado, 4-dr Crew cab, 07–
GMC Sierra, 4-dr Extended cab, 07–
GMC Sierra, 4-dr Crew cab, 07–

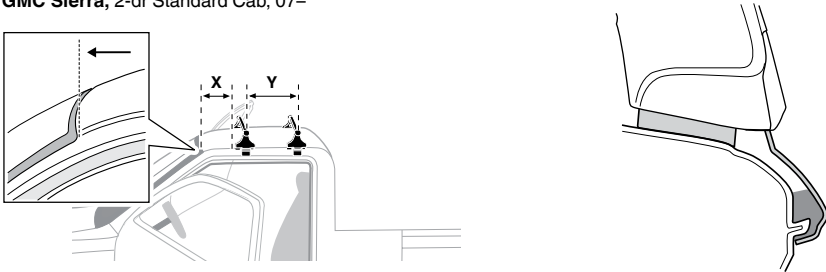
**A****B****C**

6

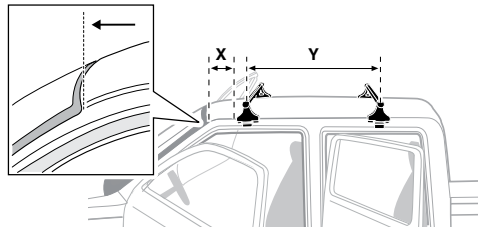


	X mm	Y mm	X inch	Y inch
CHEVROLET Silverado, 2-dr Standard Cab, 07-	257 mm	305 mm	10 1/8"	12"
CHEVROLET Silverado, 4-dr Extended Cab, 07-	279 mm	800 mm	11"	31 1/2"
CHEVROLET Silverado, 4-dr Crew Cab, 07-	279 mm	800 mm	11"	31 1/2"
GMC Sierra, 2-dr Standard Cab, 07-	257 mm	305 mm	10 1/8"	12"
GMC Sierra, 4-dr Extended Cab, 07-	279 mm	800 mm	11"	31 1/2"
GMC Sierra, 4-dr Crew Cab, 07-	279 mm	800 mm	11"	31 1/2"

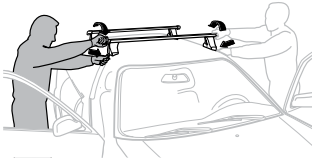
CHEVROLET Silverado, 2-dr Standard Cab, 07-
GMC Sierra, 2-dr Standard Cab, 07-



CHEVROLET Silverado, 4-dr Extended Cab, 07-
CHEVROLET Silverado, 4-dr Crew Cab, 07-
GMC Sierra, 4-dr Extended Cab, 07-
GMC Sierra, 4-dr Crew Cab, 07-



7



GB/US	Tighten alternately
D	Die Schrauben abwechselnd anziehen
F	Serrer alternativement chaque côté
NL	Afwisselend aan de linker- en de rechterkant aandraaien
I	Alternare il serraggio delle viti
E	Apertar alternativamente
PT	Aperte alternadamente
S	Dra åt växelvis
FIN	Kierrä vuorotellen
EST	Pinguldage vaheldumisi
LAT	Pielveiciet pamišus
LIT	Užsukinėkite pakaitomis
PL	Śruby dokręcaj naprzemiennie
RU	Загтягивайте попеременно

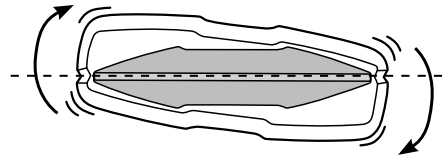
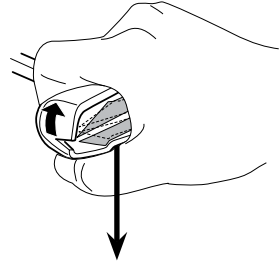
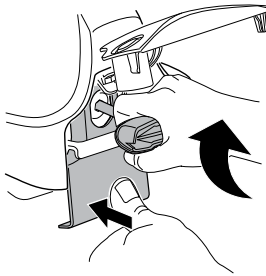
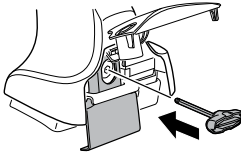
CZ	Pokręřta bařažníka dokręřcaj dokręřcaj naprzemiennie.
SK	Dofahajte striedavo
SLO	Privijajte izmenično.
HR	Naizmjenično zategnite
HU	Egymástól függetlenül szorítandó
GR	Σφιγίγεται εναλλάξ
TR	Dönüşümlü sıkın

中文 交替拧紧

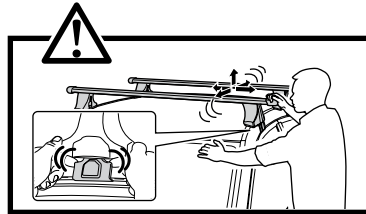
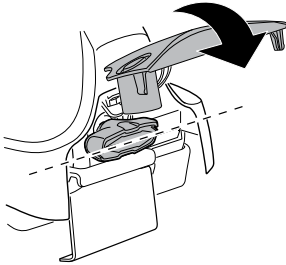
한국어 번갈아 가며 조이십시오.

日本語 交互に締め付けてください。

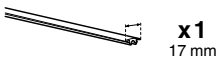
ไทย ชันในแบบสลับ



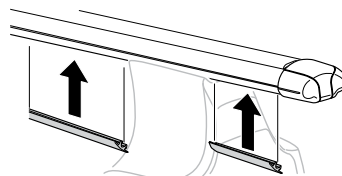
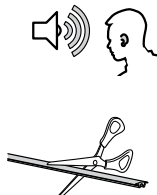
≈ 3 Nm

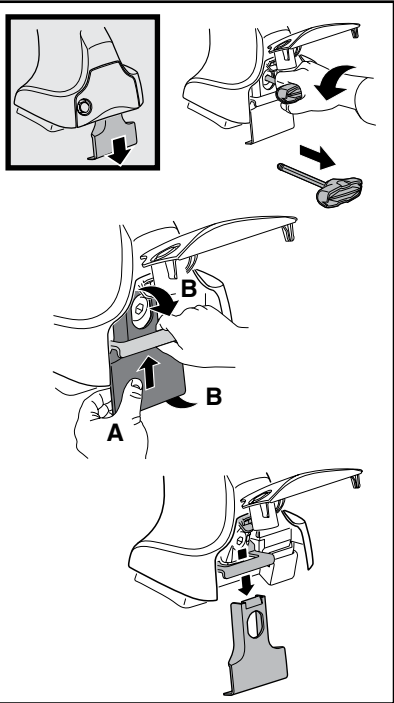
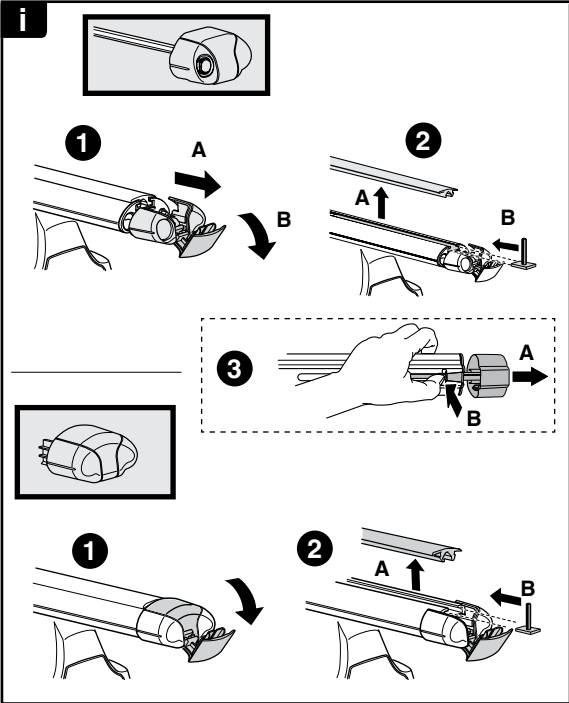
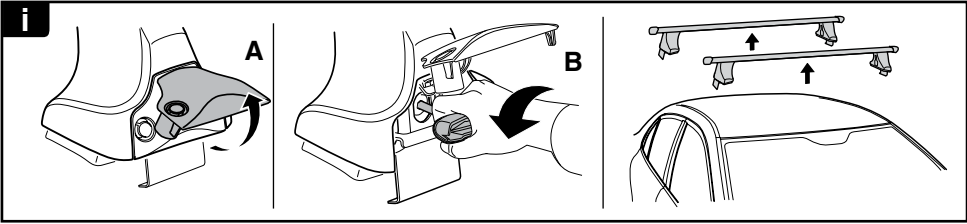


8

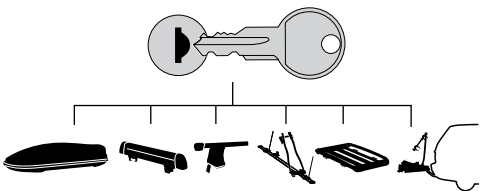


x1
17 mm





THULE
SWEDEN
**ONE
KEY
SYSTEM**



- 544 (x4)
 - 596 (x6)
 - 588 (x8)
 - 510 (x10)
 - 452 (x12)
- NA
EUR
ASIA

