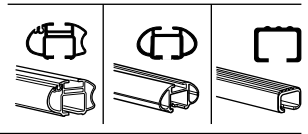
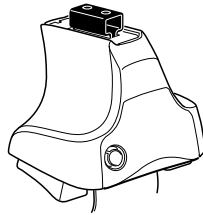


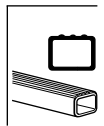
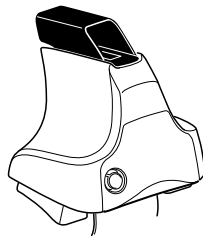
# Kit 1443

LAND ROVER Freelander 2, 5-dr SUV, 07-  
LAND ROVER LR2, 5-dr SUV, \*07-

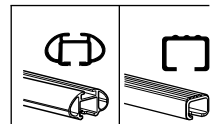
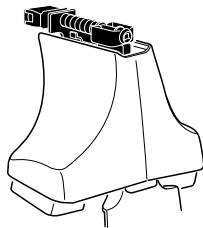
480R  
754



480

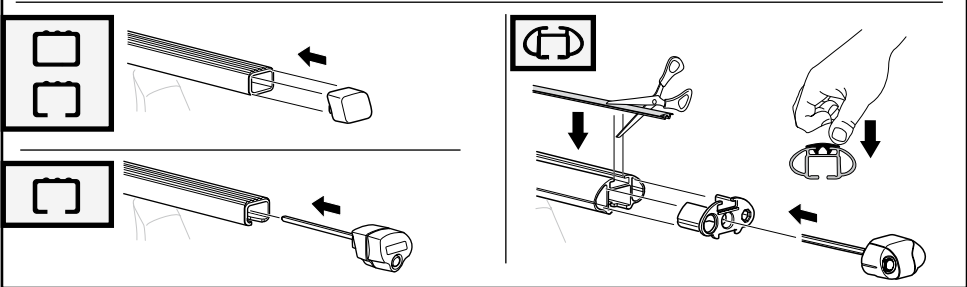
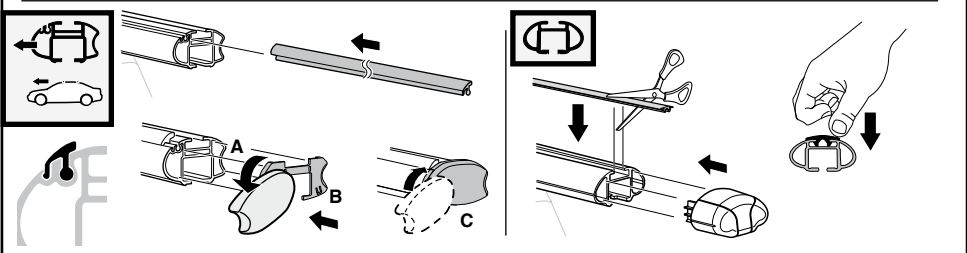
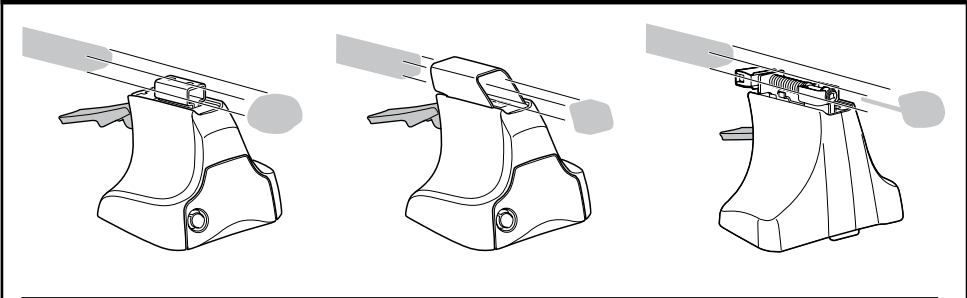
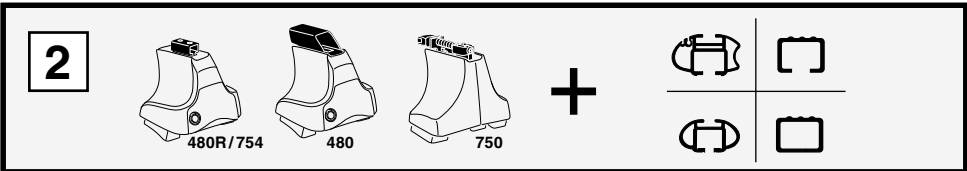
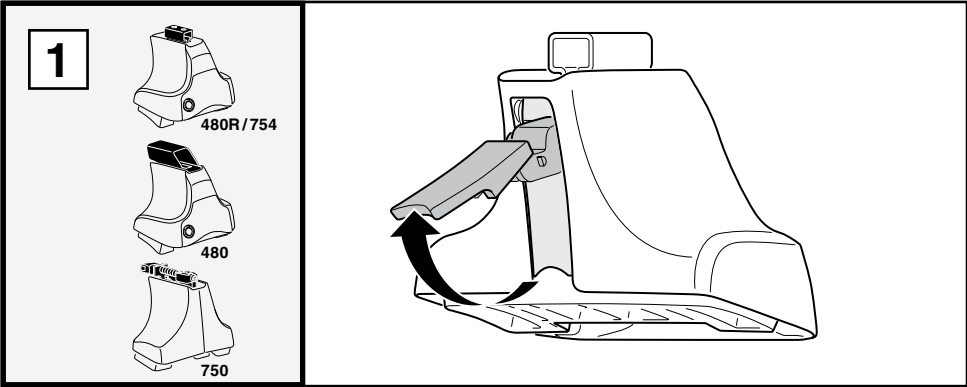


750

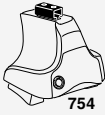


x2 x2 x2 x4	x2	x2 x2 x4 x4	x2 x2	x2	x2

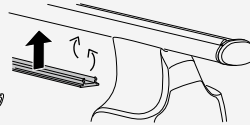
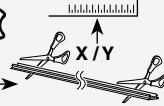
**Kit**



**3**



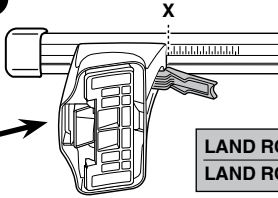
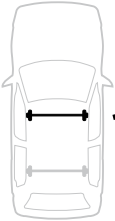
754



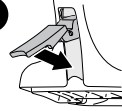
750



**1**



**2**

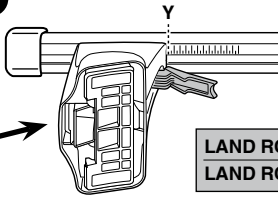
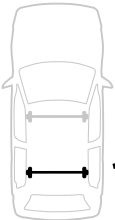


<b>LAND ROVER Freelander 2, 5-dr SUV, 07-</b>	<b>X</b>
<b>LAND ROVER LR2, 5-dr SUV, *07-</b>	<b>45.5</b>

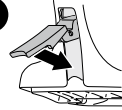
**X**

**45.5**

**1**



**2**



<b>LAND ROVER Freelander 2, 5-dr SUV, 07-</b>	<b>Y</b>
<b>LAND ROVER LR2, 5-dr SUV, *07-</b>	<b>42.5</b>

**Y**

**42.5**

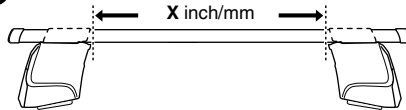


480R

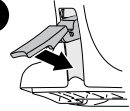


480

**1**



**2**

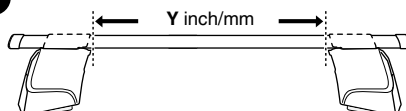


	<b>X inch</b>	<b>X mm</b>
<b>LAND ROVER Freelander 2, 5-dr SUV, 07-</b>	<b>43 1/2"</b>	<b>1106 mm</b>
<b>LAND ROVER LR2, 5-dr SUV, *07-</b>	<b>43 1/2"</b>	<b>1106 mm</b>

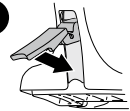
**X inch**

**X mm**

**1**



**2**



	<b>Y inch</b>	<b>Y mm</b>
<b>LAND ROVER Freelander 2, 5-dr SUV, 07-</b>	<b>42 3/8"</b>	<b>1076 mm</b>
<b>LAND ROVER LR2, 5-dr SUV, *07-</b>	<b>42 3/8"</b>	<b>1076 mm</b>

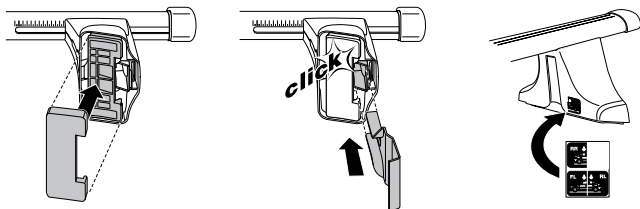
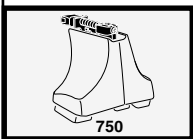
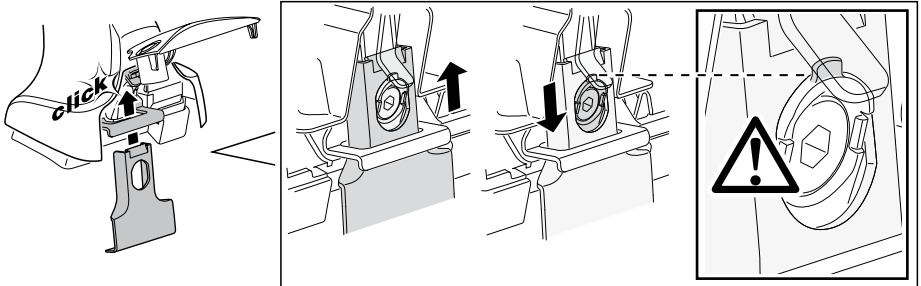
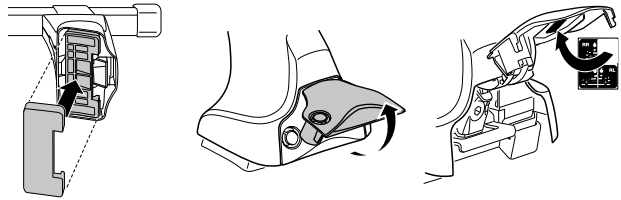
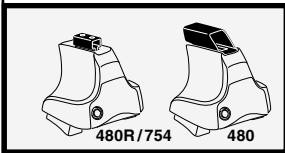
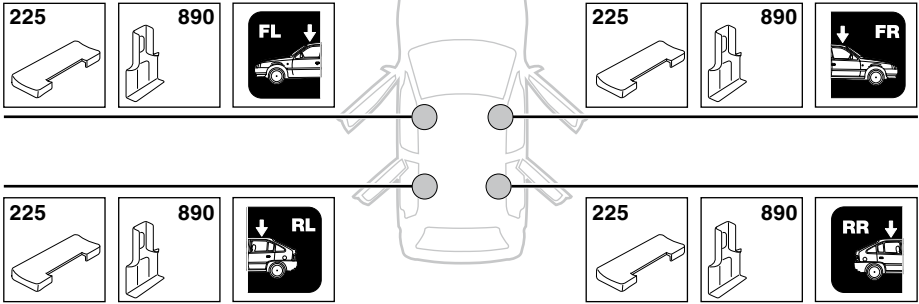
**Y inch**

**Y mm**

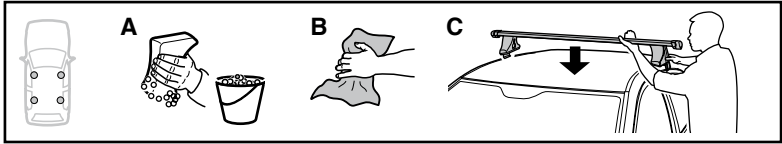
# 4

LAND ROVER Freelander 2, 5-dr SUV, 07-

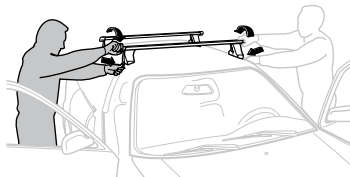
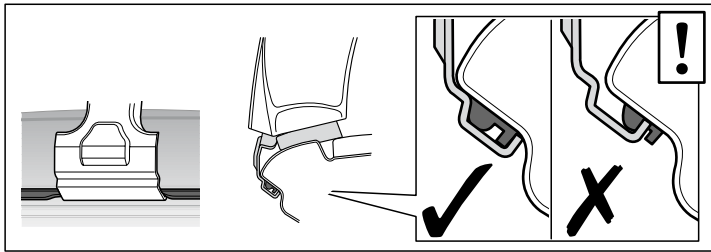
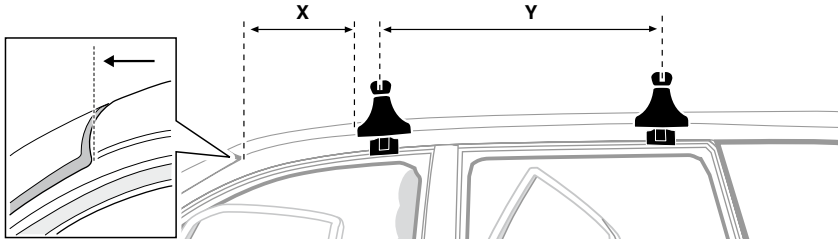
LAND ROVER LR2, 5-dr SUV, \*07-



5



	X mm	Y mm	X inch	Y inch
LAND ROVER Freelander 2, 5-dr SUV, 07-	310 mm	700 mm	12 1/4"	27 1/2"
LAND ROVER LR2, 5-dr SUV, *07-	310 mm	700 mm	12 1/4"	27 1/2"



**GB/US** Tighten alternately

**D** Die Schrauben abwechselnd anziehen

**F** Serrer alternativement chaque côté

**NL** Afwisselend aan de linker- en de rechterkant aandraaien

**I** Alternare il serraggio delle viti

**E** Serrare alternativamente

**PT** Aperte alternadamente

**S** Dra åt växelvis

**FIN** Kierrä vuorotellen

**EST** Pinguldage vaheldumisi

**LAT** Pielieciet pamišus

**LIT** Užsukinėkite pakaitomis

**PL** Śruby dokręcaj naprzemiennie

**RU** Затягивайте попеременно

**CZ** Pokręťta багаžníka dokręcaj dokręcaj naprzemiennie.

**SK** Doťahujte striedavo

**SLO** Privijajte izmenično.

**HR** Naizmjenično zategnite

**HU** Egymástól függetlenül szorítandó

**GR** Σφιγγετε εναλλάξ

**TR** Dönüşümlü sıkın

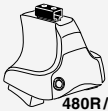
**中文** 交替拧紧

**한국어** 번갈아 가며 조이십시오.

**日本語** 交互に締め付けてください。

**ไทย** ชันในแบบสลับ

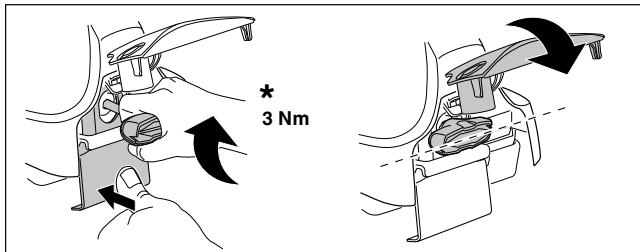
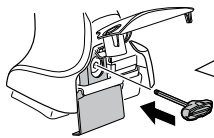
6



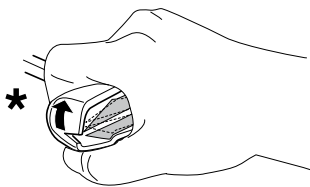
480R/754



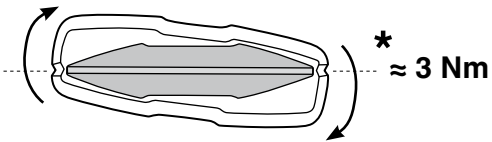
480



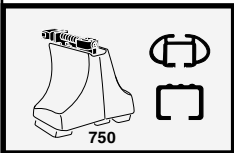
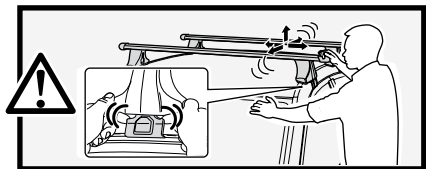
\*  
3 Nm



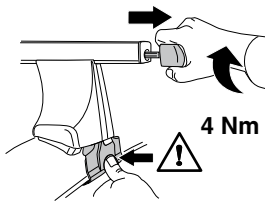
\*



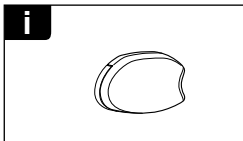
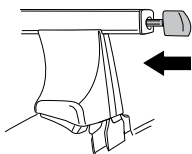
\*  
≈ 3 Nm



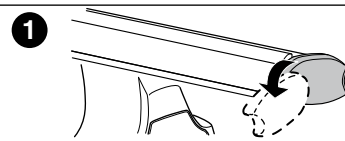
750



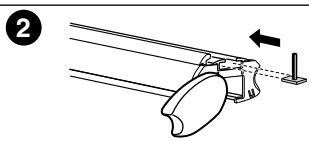
4 Nm



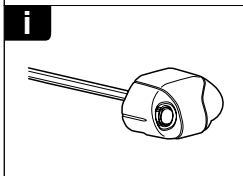
i



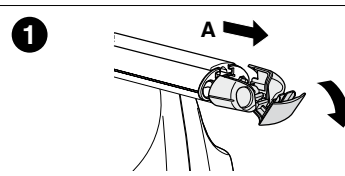
1



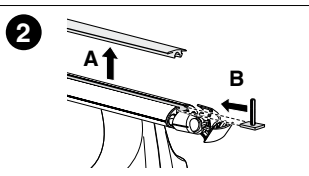
2



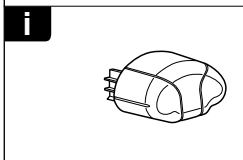
i



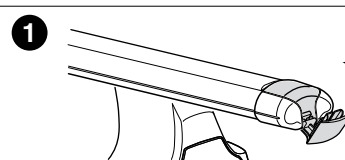
1



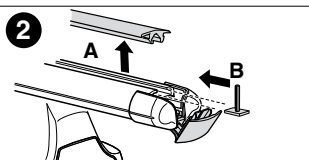
2



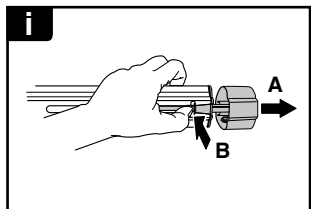
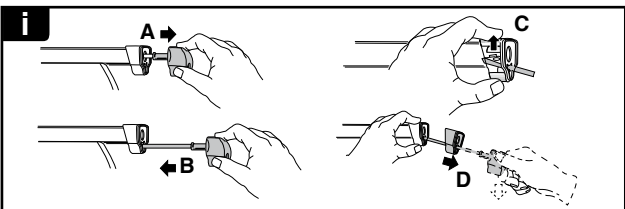
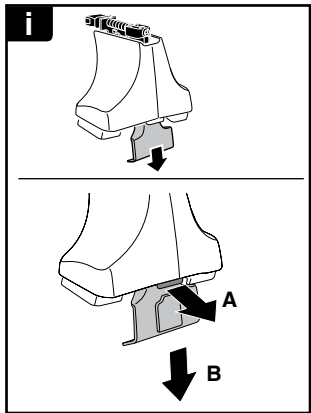
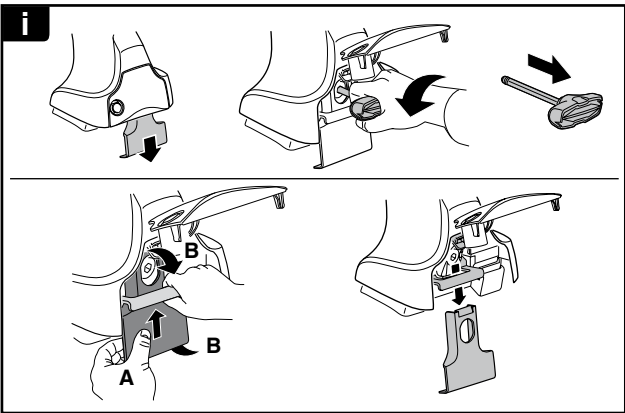
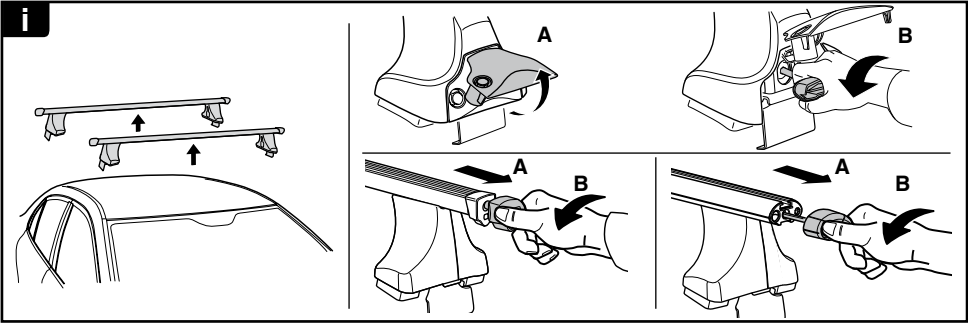
i



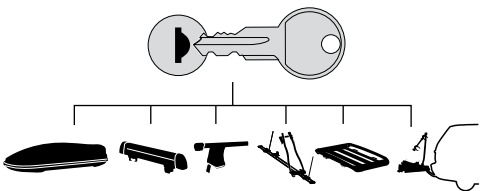
1








2



**THULE**  
SWEDEN  
**ONE  
KEY  
SYSTEM**



-  544 (x4)
  -  596 (x6)
  -  588 (x8)
  -  510 (x10)
  -  452 (x12)
- NA  
EUR  
ASIA

