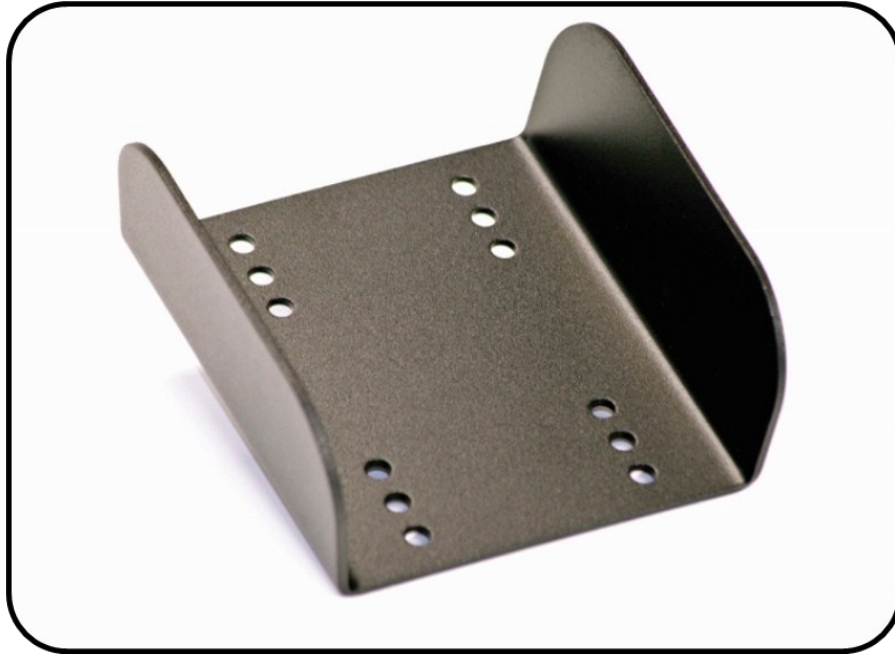


TERAFLEX

PRODUCT INSTALLATION GUIDE

JK Stock Brake Light Extension Bracket

Part #4997120



Important Notes:

Prior to beginning this or any installation read these instructions to familiarize yourself with the required steps and evaluate if you are experienced and capable to personally perform these modifications.

Refer to the parts list to ensure that all necessary components and hardware has been included.

Kit Contents:

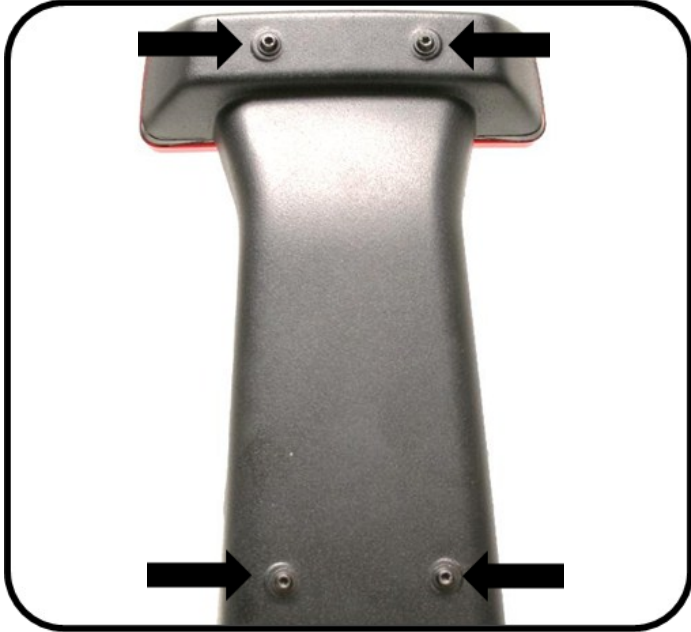
Item ID (config)	Description (config)	Qty
74	Bolt 1/4"-20 UNC x 3/4" Long, Hex Zinc (ESS Sensor)	4
88	Nut 1/4"-20 UNC Lock Stainless	4
458	Washer 1/4" Flat Zinc Plated	8
997120	JK Brake Light Bracket Adapter	1

Tools needed:

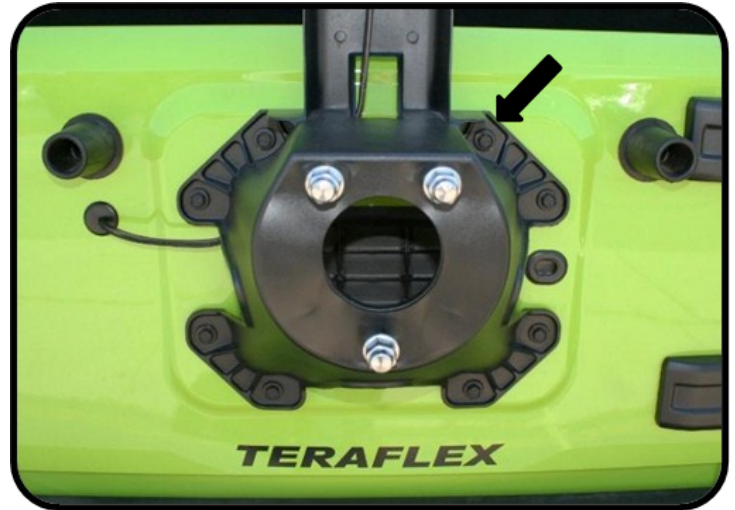
- Drill
- 1/4" drill bit
- Cut-off wheel
- Tape measure
- 13mm socket
- Masking tape
- 13/16" socket
- 7/16" socket
- 7/16" wrench
- T20 torx driver
- Sharpie
- File

Installation:

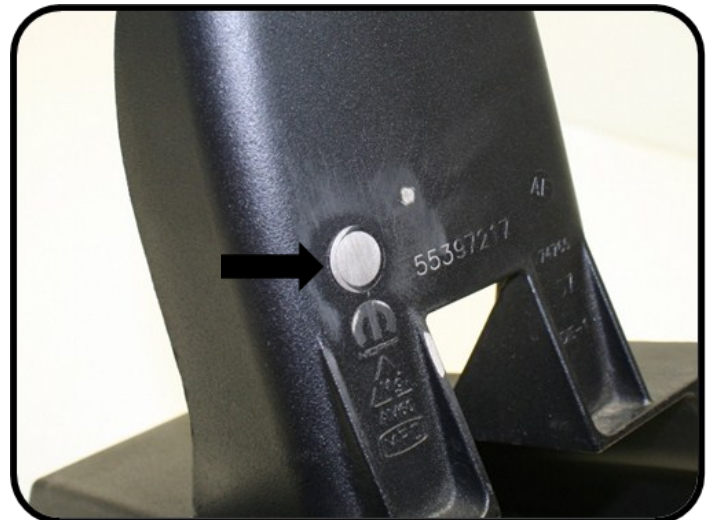
1. Remove the spare tire.
2. Open the tailgate, and remove the four t20 screws that secure the brake light to its housing. Disconnect the electrical connector from the brake light, and remove the brake light.



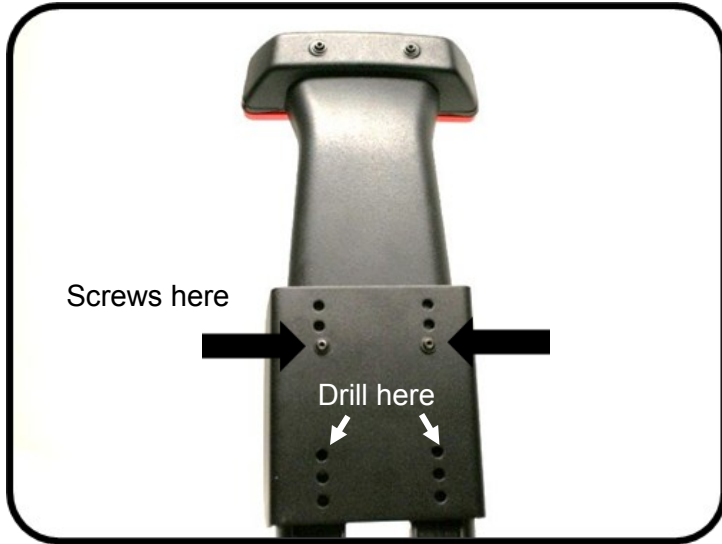
3. Remove the factory tire mount from the vehicle by unthreading the eight bolts that secure it.



4. With the mount removed, grind off the small bump on the back of the mount.



5. Use the factory screws to position the extension bracket as pictured. Use the holes closest to the middle of the extension bracket.



6. Using the extension bracket as a template, drill two 1/4" holes in the tire mount. Use the holes closest to the center of the extension bracket.

7. When finished drilling, remove the extension bracket from the tire mount.

8. Measure three inches up from the edge of the middle pocket of the tire mount as shown. Make a mark using a Sharpie, and apply masking tape across the mark to provide a straight edge along which to cut.



9. Cut along the lower edge of the masking tape using a cut-off wheel.

10. De-burr and clean the cut edges.

11. Adjust the length of the brake light housing by selecting the appropriate set of holes in the extension bracket for your tire size. Install the factory screws into the top of the bracket, and the supplied bolts, nuts, and washers through the newly-drilled holes.



12. Re-install the tire mount onto the tailgate.

13. Re-install the 3rd brake light.

14. Install the spare tire

Installation is complete.

TERAFLEX **PRODUCT INFORMATION**

MAINTENANCE INFORMATION:

It is the buyer's responsibility to have all suspension, drivetrain, steering, and other components checked for proper tightness and torque after the first 100 miles and every 3000 miles after that.

NOTICE TO INSTALLER:

The enclosed "Warning to Driver" sticker must be installed in the vehicle in driver's view. This sticker is to act as a constant safety reminder when operating the vehicle. It is your responsibility as the equipment installer to install the provided sticker and to forward the product instructions to the vehicle's owner for review. If a "Warning to Driver" sticker or product installation guide were not included in the kit, FREE replacement stickers and instructions are available by request. It is the installer's duty to ensure a safe and controllable vehicle after the modifications have been performed.

WARNING:

Neither the seller nor the manufacturer will be liable for any loss, damage, or injury directly or indirectly arising from the use of or inability to determine the use of these products. Before using, the user shall determine the suitability of the products for its intended use, and the user shall assume all responsibility and risk in connection therewith.

WARNING TO DRIVER:

This vehicle has been modified to enhance off road performance and has unique handling characteristics. Use in harsh environments can cause extreme stress on the components. Vehicle should be inspected after being off road to make sure that all the components are in working order and safe to travel on the highway. All fasteners should be checked so that they are at the correct torque specifications as the vibration and stresses from off-roading may cause critical fasteners to work loose. Extra care should be taken to inspect the critical components, steering, and brake systems. During each oil change components such as arms, tie rod ends, etc. should be greased and checked for excessive wear. Any worn components should be replaced. When returning to the pavement always set or restore tire air pressure to the factory recommendation and connect or engage any disabled sway bar mechanisms. Because of the higher center of gravity and larger tires, this vehicle handles and reacts differently than many passenger cars, both on and off road. You must drive it safely! Extreme care should be taken to prevent vehicle rollover or loss of control, which can result in serious injury or death. Avoid sudden sharp turns or abrupt maneuvers. Generally, braking performance and capabilities are decreased when significantly larger/heavier tires are used, especially when used in combination with transfer case low-range reduction kits. Take this into consideration while driving. Do not add, alter or fabricate any factory or aftermarket parts to increase vehicle height over the intended height of the TeraFlex product purchased. Mixing component brand is not recommended. TeraFlex Inc. will not be responsible for any altered product or any improper installation or use of our products. We will be happy to answer any questions concerning the design, function, and correct use of our products. It is ultimately the buyer's responsibility to have all bolts/nuts checked for tightness after the first 100 miles and then every 3000 miles. Wheel alignment, steering system, suspension and drive line systems must be inspected by a qualified professional mechanic at least every 3000 miles.