

SportRack®



WE FIT YOUR LIFESTYLE!
¡NOS ADAPTAMOS A TU ESTILO DE VIDA!



p 3



p 4-11



p 12-14



p 15



p 16-19

WE FIT YOUR LIFESTYLE!

SportRack® is proud to offer safe, quality products that allow you to take full advantage of your vehicle's carrying capacity. SportRack accessories perfectly adapt the gear and equipment you use to your vehicle, helping to fulfill your active lifestyle.



A21001S-A21010S
FRONTIER RACK SYSTEM

Everything in one package: load bars, feet and locks. Ready to install!

- Compatible with most carrier accessories (e.g. bikes, kayaks, skis, cargo)
- Easy installation without tools; locks included
- Load capacity up to 130 lbs (59 kg)
- 8 SKUs fit most of the vehicles on the road today



A21009N

A specific Frontier solution for vehicles with front-to-back raised side rails

- Fits most SUVs, CUVs and wagons with raised side rails





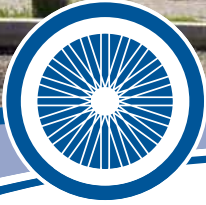
ABR611
NOMAD UPRIGHT BIKE RACK

- Mounts directly to most OEM and aftermarket crossbars (max. 3.5" crossbar diameter)
- Fits 1" - 2.5" diameter and elliptical bike frames
- Locking cam adjustment system with lock included
- Large overlap on bike frame for security



ABR622
NOMAD FORK MOUNTED BIKE RACK

- Mounts directly to most OEM and aftermarket crossbars (max. 3.5" crossbar diameter)
- Easy to use skewer for secure loading and unloading
- Compatible with most 9mm disc brakes



2

 max.
 90 lbs/40 kg

**A30901LR
 2EZ LR HITCH PLATFORM SYSTEM**

- Carries up to 2 bikes, max. 90 lbs (40 kg), (A30901LR = 26 lbs/12 kg)
- Ratcheting arms with rubberized hooks securely hold bikes for maximum stability while protecting bike finish
- Includes lock cylinders to secure bikes and a receiver lock to lock carrier to vehicle
- Center post folds down for rear of vehicle access
- Hooks and wheel trays adjust to fit all bike frames and sizes
- Fits 1 1/4" and 2" receivers



Ratcheting arms
 Brazos con trinquete



Locks included
 Incluye cerraduras

4

 max.
 180 lbs/80 kg

**A30902LR
 4EZ LR HITCH PLATFORM SYSTEM**

- Carries up to 4 bikes, max. 180 lbs (80 kg), (A30902 = 72 lbs/33 kg)
- Same features as A30901LR "2EZ LR"
- For 2" hitch receiver

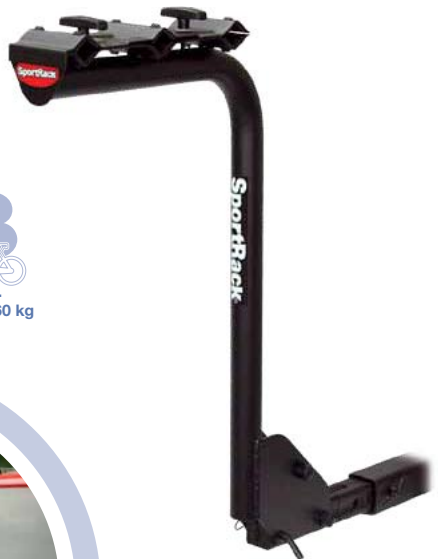


2

 max.
 90 lbs/40 kg

**A30901
 2EZ HITCH PLATFORM SYSTEM**

- Carries up to 2 bikes, max. 90 lbs (40 kg), (A30901 = 26 lbs/12 kg)
- Rubberized hooks to protect bike finish
- Hooks and wheel trays adjust to fit all bike frames and sizes
- Center post folds down for rear of vehicle access
- Fits 1 1/4" and 2" receivers



3
max.
132 lbs/60 kg

A30603
HITCH 'N' DRIVE STANDARD
HITCH MOUNTED BIKE CARRIERS

- Carries up to 3 bikes
- Attaches to your receiver with a "No Wobble" threaded hitch pin that prevents rack sway
- User-friendly bicycle attachments with rubber extrusion to protect bike finish
- Designed to handle bikes with oversized top tubes (2½" or less in diameter)
- Easily tilts down for rear of vehicle access
- Locking kit available
- Fits 1¼" and 2" receivers



4
max.
180 lbs/80 kg

Hitch must have a minimum Class II rating

A30604
HITCH 'N' DRIVE STANDARD
HITCH MOUNTED BIKE CARRIERS

- Carries up to 4 bikes
- Attaches to your receiver with a "No Wobble" threaded hitch pin that prevents rack sway
- User-friendly bicycle attachments with rubber extrusion to protect bike finish
- Designed to handle bikes with oversized top tubes (2½" or less in diameter)
- Easily tilts down for rear of vehicle access
- Locking kit available
- Fits 1¼" and 2" receivers



Arms fold down easily when not in use



A30403XT

3
max.
132 lbs/60 kg

A30404XT

4
max.
180 lbs/80 kg

Hitch must have a minimum Class II rating

A30403XT - A30404XT EVADER HITCH MOUNTED BIKE CARRIERS

- Carries up to 3 bikes (A30403XT) and 4 bikes (A30404XT)
- Includes two locking mechanisms: a receiver bolt to lock the carrier to the vehicle and a strong cable lock to lock the bikes to the carrier
- Attaches to your receiver with a "No Wobble" threaded hitch pin that prevents rack sway
- Bike cradles with anti-sway blocks and easy-on rubber straps
- Easily tilts down for rear of vehicle access
- Fits 1 1/4" and 2" receivers



A30403

3
max.
132 lbs/60 kg

A30404

4
max.
180 lbs/80 kg

Hitch must have a minimum Class II rating

A30403 - A30404 ESCAPE HITCH MOUNTED BIKE CARRIERS

- Carries up to 3 bikes (A30403) and 4 bikes (A30404)
- Attaches to your receiver with a "No Wobble" threaded hitch pin that prevents rack sway
- Bike cradles with anti-sway blocks and easy-on rubber straps
- Easily tilts down for rear of vehicle access
- Locking kit available
- Fits 1 1/4" and 2" receivers



A30404TW200

4
max.
180 lbs/80 kg

Hitch must have a minimum Class II rating

A30404TW200 ESCAPE TOWING HITCH MOUNTED BIKE CARRIER

- Carries up to 4 bikes
- Includes a hitch-ball mount so you can tow up to 2,000 lbs in weight (200 lbs (91 kg) tongue weight) while hauling your bikes (ball not included)
- Bike cradles with anti-sway blocks and easy-on rubber straps
- Easily tilts down for rear of vehicle access
- Locking kit available
- Fits 2" receivers



3


max.
132 lbs/60 kg

**A1124XT
BACKBONE 3 TRUNK MOUNT BIKE CARRIER**

- Can carry up to 3 bicycles
- Soft rubber cradles & straps to securely hold the bike without damaging the top tube or marring the paint
- Anti-sway stability cradles to prevent bike to bike or bike to vehicle contact
- Quick hub mounting system for easy installation
- Folds flat for convenient storage when not in use
- Soft cushion pads protect trunk and hatch
- Six adjustable straps to hold carrier snugly to the vehicle
- Fits on most 3, 4 and 5 door vehicles



2


max.
90 lbs/40 kg

**A1122XT
BACKBONE 2 TRUNK MOUNT BIKE CARRIER**

- Can carry up to 2 bicycles
- Same features as A1124XT



A1122SP



max.
90 lbs/40 kg

A1124SP



max.
132 lbs/60 kg

A1122SP - A1124SP

BACKRIDER 2 AND BACKRIDER 3 TRUNK MOUNT BIKE CARRIERS

- Can carry up to 2 bicycles (A1122SP) and 3 bicycles (A1124SP)
- Soft rubber cradles & straps to securely hold the bike without damaging the top tube or marring the paint
- Quick hub mounting system for easy installation
- Folds flat for convenient storage when not in use
- Soft cushion pads protect trunk and hatch
- Six adjustable straps to hold carrier snugly to the vehicle
- Fits on most 3, 4 and 5 door vehicles



max.
132 lbs/60 kg

A1162

EUROTrio TRUNK MOUNT BIKE CARRIER

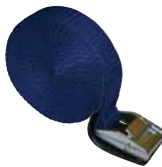
- Can carry up to 3 bicycles
- Quick hub mounting system for easy installation
- Folds flat for convenient storage when not in use
- Soft cushion pads protect trunk and hatch
- Six adjustable straps to hold carrier snugly to the vehicle
- Fits on most 3, 4 and 5 door vehicles



ABR700 - 9'



ABR701 - 12'



ABR702 - 15'



ABR703 - 18'

ABR700-703 SPORT STRAPS

- Variety of strong sports straps for tying down all your sports gear to the vehicle
- Durable polypropelene straps with chromate buckles
- Vinyl buckle guard to protect vehicle
- Full range of lengths to meet a variety of strapping needs
- Convenient color-coding corresponds to various lengths



A34500 ALTERNATIVE BIKE ADAPTER

- Telescoping design and protective loops allow different geometry bikes (i.e., women's and bmx bikes) to ride on hitch or strap rack arms



A32020 LOCKING CABLE

- For hitch mounted bike racks A30901, A30902, A30403, A30404, A30404TW200



A32022 LOCKING KIT

- For hitch mounted bike racks A30901, A30902, A30403, A30404
- Includes Locking Cable and Locking Hitch Pin



A30901 LHP LOCKING HITCH PIN

- For hitch mounted bike racks A30901, A30902, A30603, A30604, A30403, A30404, A30850



A32018 LOCKING KNOB

- For hitch mounted bike racks A30603, A30604



**BSR-10
BIKE VALET**

The Bike Valet is a very useful parking stand that parks up to six bikes (three per side) with a heavy-duty textured finish for indoor or outdoor use

- Dimensions: 35"(l) x 31"(w) x 29"(h)



**BSR-12
UNIVERSAL 2 BIKE STACKER**

- Neat, balanced mounting for every style bike
- Infinitely adjustable bike hangers
- V-shaped soft rubber bike holders will not mar paint or crush cables
- 1" x 2" steel construction won't bend even with heavy cruisers



**ABR511
J-STACKER KAYAK CARRIER**

- Easy to use with no adjustment needed, just lift boat and place it in
- Quick on/off hardware ensures rapid installation and removal on most OEM and aftermarket crossbars (max. 3.5" crossbar diameter)
- Includes two heavy-duty tie-down straps with cam-buckle and two ropes with galvanized steel bumper hooks



**ABR512
KAYAK SADDLE CARRIER**

- Custom designed saddle conforms to multiple hull shapes
- Maximum kayak protection with integrated rubber pads
- 4" U-bolt ensures rapid installation and removal on most OEM and aftermarket crossbars (max. 3.5" crossbar diameter)
- Includes two heavy-duty tie-down straps with cam-buckles and two ropes with galvanized steel bumper hooks

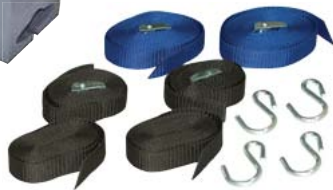
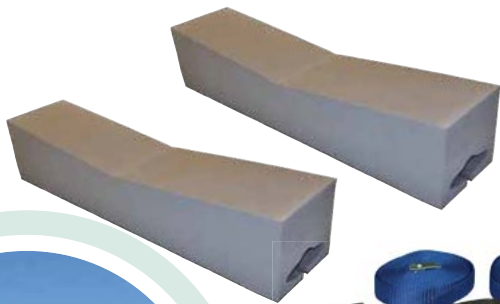
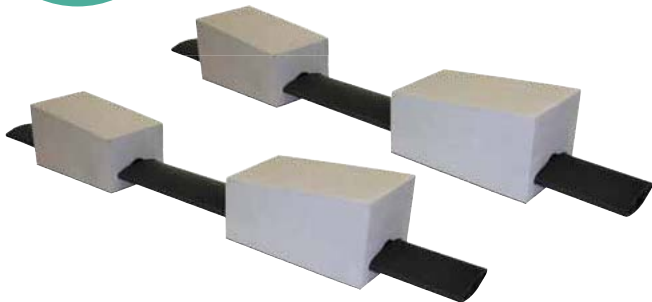




ABR527

ULTIMATE 24" ADJUSTABLE KAYAK CARRIER

- Fully-adjustable foam blocks can be positioned at different spacings on bar to accommodate full-range of kayak widths (16" to 24" spacing)
- Four durable 6"-long closed cell foam to protect kayak and vehicle
- Non-skid underside to prevent movement on the vehicle
- Oval aluminum bar prevents vehicle contact and steadies foam
- Two straps secure bar and foam blocks to vehicle so it can remain on roof
- Includes two 15'-long strong polypropelene straps with chromate buckles to secure kayak to carrier
- Two specially-designed straps for front and rear tie-downs
- Fits Thule, SportRack, round, factory racks and bare roofs



ABR526

DELUXE 16" KAYAK CARRIER

- Two durable 16"-long closed cell foam blocks to protect kayak and vehicle
- Non-skid underside to prevent movement on the vehicle
- Includes two 15'-long strong polypropelene center straps with chromate buckles to secure to vehicle
- Includes two specially-designed straps for front and rear tie-downs
- Fits Thule, SportRack, round, factory racks and bare roofs

ABR531

DELUXE 20" KAYAK CARRIER

- Two durable 20"-long closed cell foam blocks to protect kayak and vehicle
- One strong polypropelene strap with chromate buckle to secure kayak to carrier
- Includes two specially-designed straps for front and rear tie-downs
- Same features as ABR526



ABR525



ABR525

STANDARD 12" KAYAK CARRIER

- Two durable 12"-long closed cell foam blocks to protect kayak and vehicle
- Non-skid underside to prevent movement on the vehicle
- Two 15"-long strong polypropelene center straps with chromate buckles to secure to vehicle
- Includes two extra-long ropes for front and rear tie-downs
- Fits Thule, SportRack, round, factory racks and bare roofs

ABR530

STANDARD 14" KAYAK CARRIER

- Two durable 14"-long closed cell foam blocks to protect kayak and carrier
- One strong polypropelene strap with chromate buckle to secure kayak to carrier
- Includes two specially-designed straps for front and rear tie-downs
- Same features as ABR525



ABR529



ABR529

DELUXE 8" CANOE CARRIER

- Four durable 8"-long closed cell foam blocks to protect canoe and vehicle
- Non-skid underside to prevent movement on the vehicle
- One strong polypropelene strap with chromate buckle to secure to vehicle
- Includes two specially-designed straps for front and rear tie-downs
- Custom-cut slots to attach to canoe gunnels
- Fits Thule, SportRack, round, factory racks and bare roofs

ABR528

STANDARD 6" CANOE CARRIER

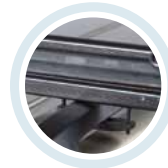
- Four durable 6"-long closed cell foam blocks to protect canoe and vehicle
- One strong polypropelene strap with chromate buckle to secure to vehicle
- Includes two extra-long ropes for front and rear tie-downs
- Same features as ABR529



ABR53DL
SKI / SNOWBOARD CARRIER

For vehicles with front-to-back rails or side-to-side crossbars

- Adjusts up to 56" in width
- Carries up to 8 pairs of skis or 4 snowboards
- Heavy-duty locks for added security
- Includes universal mounting hardware (max. 3.25" crossbar diameter)
- Raiser block included



Front-to-back Raised Rail



Side-to-side crossbars



ABR456DL
SKI / SNOWBOARD CARRIER

- Carries up to 6 pairs of skis or 4 snowboards
- Includes locks and universal mounting hardware (max. 3.25" crossbar diameter)
- Raiser block included



A26395

AERO 1300 ROOF BOX

- 368 liter (13 cu. ft.) capacity
- ABS construction is durable and UV-resistant
- Mounts directly to most OEM and aftermarket crossbars (max. 4" crossbar diameter)
- Passenger-side opening with central locking
- Dimensions: 75"(l) x 23.5"(w) x 16"(h) / 33 lbs (15 kg)
- Maximum load of 110 lbs (50 kg)



Quick Release Attachment Kit included for easy installation/removal



A90275

AERO XL ROOF BOX

- 18 cu. ft. (509 liter) capacity
- ABS construction is durable and UV-resistant
- Mounts directly to most OEM and aftermarket crossbars (max. 4" crossbar diameter)
- Rear opening
- Dimensions: 63"(l) x 38"(w) x 19"(h) / 38 lbs (17 kg)
- Maximum load of 110 lbs (50 kg)



U-Bolt Attachment Kit included





- A90095**
EXPLORER ROOF BOX
- 509 liter (18 cu. ft.) capacity
 - Mounts directly to most OEM and aftermarket crossbars (max. 4" crossbar diameter)
 - Passenger-side opening with two locking latches
 - Dimensions: 54"(l) x 39"(w) x 19.5"(h) / 32 lbs (14.5 kg)
 - Maximum load of 100 lbs (45 kg)



U-Bolt Attachment Kit included



- A21106B**
SHERPA 13 ROOF BAG CARGO CARRIER
- 368 liter (13 cu. ft.) capacity
 - Durable, water-resistant nylon construction helps keep belongings dry
 - Mounts directly to most OEM and aftermarket roof-racks
 - Dimensions: 35"(l) x 35"(w) x 18"(h)



**A21030
ROOF BASKET**

- Perfect size for wagons, mid-size cars, minivans, or SUVs
- Mounts directly to most factory and aftermarket crossbars (max. 3.5" crossbar diameter)
- Custom fairing included
- Dimensions: 44.75"(l) x 39"(w) x 6.25"(h) / 28 lbs (13 kg)



**A21031
ROOF BASKET EXTENSION**

- Adds 22" extension to A21030 Roof Basket
- Dimensions: 22"(l) x 39"(w) x 6.25"(h) / 14 lbs (6 kg)



**A21033
ROOF BASKET NET**

- Elastic cargo net with integrated hooks helps keep gear inside A21030 Roof Basket
- Dimensions: 40 x 36" (101 x 91 cm)





NOTE: Hitch must have a minimum Class III/IV rating. Total weight of carrier & cargo not to exceed 500 lbs (225 kg).

**A30850
FOLDING HITCH BASKET**

- Made to fit in 2" receiver hitch
- Folds up against vehicle when not in use
- Heavy-duty all steel tubular construction
- Dimensions: 60"(l) x 20"(w) x 6"(h) / 67 lbs (30.5 kg)



**A21120B
HITCH BASKET BAG**

- 283 liter (10 cu. ft.) capacity
- Durable, water-resistant coated nylon construction helps keep belongings dry
- Dimensions: 60"(l) x 19"(w) x 16"(h)



**A21035
HITCH BASKET NET**

- Elastic cargo net with integrated hooks helps keep gear inside A30850 Hitch Basket
- Dimensions: 20 x 60" (51 x 152 cm)