

SOUNDSTREAM



2015

Tarantula Nano

We're in a time where small is "in". Smaller, more economical vehicles are more and more desirable. But that doesn't mean you have to sacrifice big power for your system. The new Tarantula NANO amplifiers pack huge amounts of power into small chassis thanks to efficient Full-Range Class D topology and SMT technology. Complimented with every possible preamp adjustment, the NANO amplifiers leave nothing to be desired...



- Class D Full Range SMT Circuitry
- Double Sided Composite Epoxy PCB
- 2-Ohm Stereo, 4-Ohm Bridged Multi-Channel
- 1-Ohm Stable Class D Monoblock
- Three-Way Protection Circuitry
- Delayed On/Off Circuit
- Tri-Mode Capable (2/4/5 ch. models)
- Variable 12dB High, Low, & Subsonic Crossovers
- Band-Pass Crossovers (4ch & 5ch.)
- Input Source Selector (4ch. & 5ch.)
- Variable 12dB 50Hz Bass Boost (1ch.)
- Dash Mounted Remote Gain Control (5ch. & 1 ch.)
- Direct Wire 8ga. Power & Speaker Terminals
- 0ga Reducer Terminal Included



TARANTULA NANO	TN2.600D	TN4.900D	TN5.950D	TN1.1200D
Max Power	1,200w	1,800w	1,900w	2,400w
RMS Power 4Ω	200 x 2	150 x 4	85 x 4 + 270 x 1	660 x 1
RMS Power 2Ω	300 x 2	225 x 4	130 x 4 + 430 x 1	1,050 x 1
RMS Power 4Ω Bridged	600 x 1	450 x 2	260 x 2 + 430 x 1	1,200 x 1 (1Ω)
Remote Gain Control	-	-	Included	Included
Dimensions (6.625"w x 1.75"h)	6.825"	8.875"	12.625"	12.625"

Tarantula Electro

Tarantula amplifiers continue to dominate the Soundstream amplifier arsenal. For the newest 2015 generation, we've maintained their stable performance, but given them a unique appearance. Each Tarantula Electro amplifier features a 12-point RGB LED lighting system, containing its own independent RGB control. A simple press of the end panel mounted switch changes the color to one of several presets, slow-motion color change, or rapid flashing random color. For more custom installs, a single color can be selected during slow-motion color change. 2015 Tarantula Electro models include 4ch, 1-ohm stable class D 5ch & monoblocks, and an additional .5-ohm stable 3,000w monoblock.



- 2-ohm Stereo & 4-ohm Bridged Full Range Operation
- 2-ohm Minimum Impedance Monoblock Operation
- Multi-color RGB LED Illumination Accent Lighting
- Solid Color, Flashing, Random, or Slow-Motion Color Change
- MOSFET Power Supply w/ Audiophile Grade IR™ Transistors
- Military Grade SMT PCB Maintains Dynamic Performance
- Direct Short, Thermal, & Overload Circuits Protect Amplifier
- 200mV-6V High Level or Low Level RCA Input
- Variable 12dB High Pass, Low Pass, & Subsonic Crossovers
- 12dB Bass Boost Increases Low Octave Harmonics (monoblock)
- Dash Mount Gain Control Module Included (select models)

NEW



TARANTULA ELECTRO	T4.1500L	T5.2500DL	T1.4000DL	T1.6000DL
Max Power	1,500w	2,500w	4,000w	6,000w
RMS Power 4Ω	120 x 4	75 x 4 + 325 x 1	700 x 1	800 x 1
RMS Power 2Ω	180 x 4	125 x 4 + 500 x 1	1,300w	1,400 x 1
RMS Power 4Ω Bridged	360 x 2	250 x 2 + 750 x 1 (1Ω)	-	2,500 x 1 (1Ω)
RMS Power 1Ω Bridged	-	-	2,000w	3,000 x 1 (.5Ω)
Remote Gain Control	-	-	Included	Included
Dimensions (9"w x 2.50"H)	16.00"	17.25"	18.00"	20.50"

Rubicon NANO AMPLIFIERS

For 2015, Rubicon amplifiers are all new. We adopted the optimum class D performance, reliability, and footprint of the Picasso Nano platform and present to you Rubicon Nano. At first glance, you'll notice several key improvements. Rubicon Nano's signal inputs, power/ground, and speaker connections are all re-located to the leading edge of the chassis, for an easier, more appealing install. All pre-amp & crossover options are conveniently located on the top surface, making adjustment after installation possible. What you might not notice are additions to the circuit board, including increased power supply & output stage components, & monoblock bridging capability. 2015 Rubicon Nano models include a 4ch, 1-ohm stable 5ch, & class D monoblocks up to 2,500 watts.



- High Efficiency Class D Full Range Amplifiers
- Hybrid Aluminum Alloy Heatsink for Optimum Dissipation
- 2-ohm Stereo & 4-ohm Bridged Class D Full Range
- 1-ohm Minimum Impedance Monoblock Operation
- Monoblock Bridging Capability for Double Amplifier Application
- MOSFET Power Supply w/ Audiophile Grade IR™ Transistors
- Military Grade SMT PCB Maintains Dynamic Performance
- Direct Short, Thermal, & Overload Circuits Protect Amplifier
- 200mV-6V Low Level RCA or High Level Signal Input
- Quick Disconnect High Level Wire Harness Included
- Easy DIY Install Single Sided Terminals & Controls
- 4g Power Inout Terminals & 12g Speaker Output Terminals
- Variable 12dB High Pass, Low Pass, & Subsonic Crossovers
- 12dB Bass Boost Increases Low Octave Harmonics
- Dash Mount Gain Control Module Included (monoblocks)

NEW



Rubicon Nano	RN4.1400D	RN5.2000D	RN1.2000D	RN1.3000D	RN1.5000D
Max Power	1,400w	2,000w	2,000w	3,000w	5,000w
RMS Power 4Ω	125 x 4	75 x 4 + 500 x 1	400 x 1	600 x 1	1,000 x 1
RMS Power 2Ω	175 x 4	100 x 4 + 400 x 1	600 x 1	900 x 1	1,500 x 1
RMS Power 4Ω Bridged	350 x 2	200 x 2 + 600 x 1 (1Ω)	1,000 x 1	1,500 x 1	2,500 x 1
Remote Gain Control	-	Included	Included	Included	Included
Dimensions: (6.50" w x 1.50"h)	9.00"	12.00"	10.00"	10.25"	17.75"

STEALTH AMPLIFIERS

Don't let these little monsters fool you. The latest and greatest of class D full range technology allows us to pack 10 lbs of KICK YOUR ASS in less than 2 lbs chassis. Once regarded as "dirty power", class Ds stable performance, thanks to high power capability, maximum efficiencies, and low tolerance components, rivals traditional full range applications. Minimal power requirements, ultra micro footprint, unbelievable sound quality, and easy install make Stealth amplifiers great for any car, motorcycle, boat, or off-road vehicle...

New additions to the 2015 Stealth series amplifiers include an 800w 5ch model, and a 500w 4ch model with built-in Bluetooth V3.0. Seamlessly connect your cell phone or other enabled smart device for continuous audio playback at your fingertips. A great addition to off-road vehicles, motorcycles, or personal watercraft without a source unit.



**95%+ Efficient
Class D Full Range**

Only 3" x 6"!

**Install-Me-Anywhere
Micro Footprint**

- High Efficiency Class D Full Range Amplifiers
- Hybrid Aluminum Alloy Heatsink for Optimum Dissipation
- 2-ohm Stereo & 4-ohm Bridged Full Range Operation
- 2-ohm Minimum Impedance Monoblock Operation
- Built-in Bluetooth V3.0 for Wireless Mobile Device Playback*
- MOSFET Power Supply w/ Audiophile Grade IR™ Transistors
- Military Grade SMT PCB Maintains Dynamic Performance
- Direct Short, Thermal, & Overload Circuits Protect Amplifier
- 200mV-12V High Level or Low Level RCA Input
- Quick Disconnect RCA/High Level Wire Harness
- Quick Disconnect Power and Speaker Output Harness
- Variable 12dB High Pass, Low Pass, & Subsonic Crossovers
- 12dB Bass Boost Increases Low Octave Harmonics (monoblock)
- Dash Mount Gain Control Module Included (select models)



Stealth Amplifiers	ST4.1000D	ST4.1000DB	ST1.700D	ST5.1600D
MAX Power	1000w	1000w	700w	1,600w
RMS Power 4Ω	90 x 4	90 x 4	250 x 1	65 x 4 + 200 x 1
RMS Power 2Ω	125 x 4	125 x 4	350 x 1	110 x 4 + 360 x 1
RMS Power 4Ω Bridged	250 x 2	250 x 2	-	220 x 2 + 360 x 1
Remote Gain Control	-	-	Included	-
Dimensions (3"w x 1.5"h)	6.50"	6.50"	6.50"	6.75"

NEW

NEW

Picasso Nano AMPLIFIERS

Cars come in all different shapes, most in the same size; compact. So, we've engineered these mini Picassos to fit in virtually any location in your ride. Other sport compact amplifiers use bizarre technologies with psuedo power supplies. Picasso Nanos use tried and tested MOSFET power supplies & tenacious Class D circuitry.

New additions to the 2015 Picaso Nano series include a 1,000w 4ch, and 1-ohm stable 1,000w class D monoblock.

- Small Compact 4.75" Wide Chassis
- 4-ohm Bridged/2-ohm Stereo Class D Full Range
- 2-ohm Stable Class D Monoblocks
- 1-Ohm Stable Class D Monoblock Available
- MOSFET PWM Power Supply
- 80Hz 12dB HP or LP Crossover (2/4 ch.)
- 50-250Hz Variable 12dB LP Crossover (mono)
- 10-50Hz Variable 12dB Subsonic Crossover (mono)
- 12dB 45Hz Bass Boost (mono)
- 200mv-6V Low Level Input Sensitivity
- High Level Input
- Dash Mount Remote Gain Control



PICASSO NANO	PN2.350D	PN4.320D	PN4.520D	PN4.1000D	PN5.640D	PN1.450D	PN1.650D	PN1.1000D
RMS Power 4Ω	115 x 2	60 x 4	100 x 4	140 x 4	60 x 4 + 200 x 1	260 x 1	400 x 1	350 x 1
RMS Power 2Ω	175 x 2	80 x 4	130 x 4	250 x 4	80 x 4 + 350 x 1	450 x 1	650 x 1	600 x 1
RMS Power 4Ω Bridged	350 x 1	160 x 2	260 x 2	500 x 2	160 x 2 + 350 x 1	-	-	1,000 x 1 (1Ω)
Remote Gain Control	-	-	-	-	Included	Included	Included	Included
Dimensions (4.75"w x 1.5"h)	5.50"	7"	9.25"	10.25"	10.25"	8"	9.25"	10.25"

NEW

NEW



Picasso AMPLIFIERS

- Brushed Black Aluminum Finish w/ Accent Lighting
- 4-ohm Bridged, 2-ohm Stereo Class A/B Full Range
- 2-ohm Stable Class A/B Monoblock
- 1-ohm Stable Class D Monoblocks
- Variable 12dB High, Low, & Subsonic Crossovers
- High Level or 200mV-6V Low Level Input
- 4g Power & 8ga Speaker Terminals
- 6/12dB 45Hz Bass Boost
- 180° Phase Switch (D)
- Class D Strappable w/ 2-ohm Load
- Dash Mount Remote Gain Control Included

PICASSO FULL RANGE	P2.400	P4.500	P4.800	P5.610	P1.600D	P1.1000D	P1.1500D
RMS Power 4Ω	125 x 2	80 x 4	125 x 4	60 x 4 + 170 x 1	240 x 1	400 x 1	600 x 1
RMS Power 2Ω	200 x 2	125 x 4	200 x 4	85 x 4 + 270 x 1	400 x 1	750 x 1	1,000 x 1
RMS Power 4Ω Bridged	400 x 2	250 x 2	400 x 2	170 x 2 + 270 x 1	600 x 1 (1Ω)	1,000 x 1 (1Ω)	1,500 x 1 (1Ω)
Remote Gain Control	-	-	-	-	Included	Included	Included
Dimensions (8.25"w x 2"h)	12"	13"	19"	18.75"	10.25"	11.75"	16"

HARMONY Digital Signal Processor

Digital signal processors have become popular amongst sound quality enthusiasts recently. Although they generate near audiophile grade sound, they tend to be difficult to program, and down right confusing. To remedy this conundrum, Soundstream introduces Harmony, a user friendly DIY DSP that offers the features and performance you need.

- Core 32 Bit / 192kHz Digital Signal Processor Powered by Cirrus Logic
- Dedicated 8-channel DMA Engine Streams Data Without DSP Intervention
- Integrated 105dB Dynamic Range, -98dB THD+N Analog-to-Digital Converter
- Integrated 108dB Dynamic Range, -98dB THD+N Digital-to-Analog Converter
- Custom User Friendly DSP Composer™ Graphic User Interface w/ Response Display
- 30V MAX 4-channel High Level / Speaker Level Input
- 8V MAX AUX RCA Input Voltage
- 192kHz S/PDIF Optical Input
- Optional High Level Input from Hands-Free Bluetooth Module
- 8 Channel Low-Level RCA Output
- Optional Independent Input or Channel Mixing/Summing
- Up to +12dB / -18dB Master Input Level
- Up to -40dB Independent Channel Level Cut
- Up to 16ms Independent Channel Delay, 0.05ms Increments
- Independent Channel 0°/180° Phase Control
- Independent Channel High Pass, Low Pass or Bandpass Crossover
- Selectable Independent Channel 6dB-48dB/Octave Crossover Slope
- Variable Frequency Crossover Setting, 20Hz-20kHz
- 1/3 Octave/31-Band Graphic Equalizer for Each Channel
- +12dB Boost / -18dB Cut for Each Band
- Variable Independent Band Q Adjustment, 0.5-9
- Dash Mount Remote Control Included for Input, Mode, & Volume



Reference **R1** SUBWOOFERS

In today's world, where styling and sex appeal often guide your buying decisions, performance is often compromised or even lost in favor of cosmetic treatment. At Soundstream, you, our customers expect more for your hard earned dollars. Not only do you want products with outstanding cosmetic styling, you EXPECT performance. The highest performance that you have come to know and love from products bearing the Soundstream brand. You expect our products to be the pinnacle, the reference, which raises the bar and sets a new standard of outstanding performance coupled with edgy, aggressive cosmetic design. Why just settle for pretty face or an ugly sister. Soundstream Reference R1 series subwoofers answer the call.



Acoustic Canceling Polyvinyl Chloride Gasket & Trim Ring

Aggressive, edgy styled, Poly Vinyl Composite sealer trim ring is as functional as it is beautiful. Matrix corrugations dampen unwanted resonances that can color the sound under high power conditions. Wrap around design creates a perfect seal for optimum in box performance.



Oversized Concave IMPP Primary Cone

High Output, deep bone crushing bass is a modest space. Oversized rigid cone and deep reverse roll surround create over 25% more effective piston area than conventional subwoofers in the same chassis size.

2.5" 4-Layer Voice Coil w/ Acrylic Coating

To further extend the reliability of the R1, Soundstream spares no cost with precision drawn and acrylic coated voice coil wire that does not fall apart even under high power conditions.

Dual Poly-Cotton Suspension Dampen Violent Accelerations

For tight hard hitting deep percussive bass performance, the R1 features Dual Symmetric Dampers that precisely aligns the voice coil without wobble distortion common with single damper subwoofers.

Die-Cast Aluminum Soundstream Reference R1 Frame
 Oversaturated Motor Structure for Increased Magnetic Strength
 12mm Vented T-Yoke & Top Plate Improve Low Frequency Dynamics
 317oz Double Stack Magnet, T-Yoke & Top Plate
 2.5" 4-Layer Voice Coil w/ Large Gauge Wire Increases Power Handling
 High-Temperature Tolerance Adhesives Resist Thermal Failure
 Inverted Roll Polyether Foam Surround w/ UV & Chemical Protection
 Oversized Concave IMPP Primary Cone Increases Effective Surface Area

Non-Transfer Spruce Pulp Cone w/ UV & Chemical Protection
 Acoustic Canceling Polyvinyl Chloride Gasket & Trim Ring
 Nickel Plated 12ga Spring-Loaded Compression Wire Terminals
 Stitched Voice Coil Leads Prevent Potential Damage
 Dual Poly-Cotton Suspension Dampen Violent Accelerations

PATENT PENDING



REFERENCE R1	R1.122	R1.124
Max Power (watts)	1,700w	1,700w
RMS Power (watts)	850	850
Efficiency (1w/1m)	82.90	83.10
Voice Coil Configuration	2.5" DVC 2Ω	2.5" DVC 4Ω
Mounting Depth	7.875"	7.875"
Optimum Sealed ft3	1.00	1.00
Optimum Ported ft3	2.00	2.00

Tarantula SUBWOOFERS

In recent years, Tarantula subwoofers have evolved to meet various performance and placement goals, keeping your, the Soundstream fanatic, suggestions in mind. However, more often than not, we hear your calls to bring back a legend. For 2015, we're proud to re-introduce the old favorite, Tarantula T5. For this next generation, we made a few changes and several improvements.

Improvements include direct connect wire leads, over saturated 12mm top plate and t-yoke, & double-stitched cone to high density polyether foam surround for improved sound quality. Key components that you expect from T5 still remain; big ass 1,000w 3" voice coil, tripple-stack magnet structure, high density Spruce pulp sub-cone, and the iconic black-on-black Soundstream spider.



Overcompensating Motor Structure for Increased Magnetic Strength
 12mm T-Yoke & Top Plate Improve Low Frequency Dynamics
 Vented T-Yoke & Frame Reduces Voice Coil Heat Build-up
 Non-Magnetic Non-Resonate Die-Cast Aluminum Frame
 3" 4-Layer Voice Coil w/ Direct Connect Wire Increases Power Handling
 High-Temperature Tolerance Adhesives Resist Thermal Failure
 Non-Transfer Spruce Pulp Cone w/ UV & Chemical Protection
 Stitched and Glued Surround/Cone Joints for Strongest Bonding
 Extended Excursion Polyether Foam Surround w/ UV & Chemical Protection
 Dual Poly-Cotton Suspension Dampen Violent Accelerations
 1-pc Gasket/Trim Ring w/ Concealed Mounting Holes Included

NEW



Re-cone Kit Available

TARANTULA T5	T5.122	T5.152
MAX Power (watts)	2,000	2,600
RMS Power (watts)	1,000	1,300
Efficiency (1w/1m dB)	86dB	88dB
Voice Coil Configuration	3" DVC 2Ω	3" DVC 2Ω
Mounting Depth	7.25"	9.25"
Optimum Sealed Box	1.50	2.00
Optimum Ported Box	2.50	4.00

Reference



Woven Fiberglass Composite Cone

All Reference R3 woofers use fiberglass stranding woven together for ultimate strength and less elasticity. A heavy soaking in epoxy combined with the sonic qualities of pulp paper backing proves itself worthy of any system.

Extended Excursion Polyurethane Surround

Polyurethane is a foam compound used in the manufacture of countless gasket and insulation products, known for its adhesive bonding properties. Reference R3 woofers utilize an extended excursion polyurethane surround for its strength and flexible properties during extreme movement.



100% OFC 4-Layer Voice Coil

R3 woofers use generous 1.50" long, 2.5" diameter 100% OFC Copper voice coils. A vented Aluminum former extracts and dissipates any heat build-up, resulting in improved power handling.



Back Plate & T-Yoke Venting

Heat build-up is a leading cause of catastrophic woofer failure. Venting built into the T-Yoke, back plate, and voice coil extract and dissipate heat, ensuring R3 woofers keep their cool.

REFERENCE R3	R3.8	R3.10	R3.12	R3.15
MAX Power (watts)	1,000	1,400	1,600	1,800
RMS Power (watts)	500	700	800	900
Efficiency (1w/1m)	80.70	82.10	84.66	90.20
Voice Coil Configuration	2.00" DVC 2Ω	2.5" DVC 2Ω	2.5" DVC 2Ω	2.5" DVC 2Ω
Mounting Depth	5.25"	6.00"	6.875"	7.625"
Optimum Sealed ft ³	0.75	1.00	1.50	2.75
Optimum Ported ft ³	1.25	1.50	2.25	275

STEALTH-13

Simply put, this woofer is the shallowest woofer on the market. It is a full 13.25" subwoofer that can play not only in a tiny .5 cubic foot enclosure, but without losing low bass extension. Perfect for applications in doors, under seats, foot wells, & trucks.

Low Bass In No Space!

Proprietary Cast Aluminum Basket
Inverted Motor Assembly
Solid Aluminum Cone
2" Mounting Depth
5" Voice Coil
Semi-Circular Frame Venting

STEALTH-13	
MAX Power (watts)	400
RMS Power (watts)	200
Efficiency (1w/1m dB)	80.82
Voice Coil Configuration	5" SVC 4Ω
Mounting Depth	2"
Optimum Sealed Box	0.75
Optimum Ported Box	-



STEALTH-124

An addition to the Stealth family, this shallow mount 12" subwoofer yields the performance of most conventional 12" subwoofers, but needs only 3" for mounting. Consider Stealth-12 optimum for pre-fab under seat and behind rear seat shallow enclosures.

Aerated Paper Cone for Dynamic, Natural Sound Quality
Semi-Circular Frame Venting Maintains Thermal Control
Internal Motor Assembly Reduces Mounting Depth
3" Mounting Depth to Install in Any Vehicle Type
2" 4-ohm DVC for Multiple Woofer Application

STEALTH-124	
MAX Power (watts)	700
RMS Power (watts)	350
Efficiency (1w/1m dB)	86dB
Voice Coil Configuration	2" DVC 4Ω
Mounting Depth	3"
Optimum Sealed Box	1.00
Optimum Ported Box	2.00



NEW

RUBICON

SUBWOOFERS

Injection Molded Polypropylene Cone
Overcast Stitched Cone
NBR Rubber Surround
2" SVC 4-Ohm Voice Coil
Embossed Dust Cap
Frame Voice Coil Venting
Vented T-Yoke & Back Plate



RUBICON SUBWOOFERS	RUB.104	RUB.124	RUB.154
MAX Power (watts)	900	1,000	1,100
RMS Power (watts)	450	500	550
Efficiency (1w/1m)	87.30	85.67	86.97
Voice Coil Configuration	2" DVC 4Ω	2" DVC 4Ω	2" DVC 4Ω
Mounting Depth	6.00"	6.625"	7.50"
Optimum Sealed ft ³	0.75	1.25	1.50
Optimum Ported ft ³	1.50	2.00	3.00

Picasso

SUBWOOFERS

Injection Molded Polypropylene Cone
Overcast Stitched Cone
NBR Rubber Surround
2" SVC 4-Ohm Voice Coil
Embossed Dust Cap
Frame Voice Coil Venting
Vented T-Yoke & Back Plate



PICASSO SUBWOOFERS	PCO.8	PCO.10	PCO.12	PCO.12D4
MAX Power (watts)	500	600	700	700
RMS Power (watts)	250	300	350	350
Efficiency (1w/1m)	87.49	86.40	88.41	88.41
Voice Coil Configuration	2" SVC 4Ω	2" SVC 4Ω	2" SVC 4Ω	2" DVC 4Ω
Mounting Depth	4.00"	5.00"	6.00"	6.00"
Optimum Sealed ft ³	0.50	0.75	1.00	1.00
Optimum Ported ft ³	1.00	1.50	1.75	1.75

NEW

STEALTH-12EN

.6 cubic foot Preloaded Enclosure
Carpeted Black w/ Embroidered Accents
30" x 14.5" x 5.25" / 2.25"



WGRILL.12C -Chrome
WGRILL.12B -Black

12" Soundstream Spider Grill for Picasso, Rubicon, Stealth-12, Tarantula, & Reference R3 Subwoofers.



USB-8A

8" Preloaded Under Seat Enclosure w/ Amplifier

150w Amplifier Built-in
200mV-3V Input Sensitivity
Variable 12dB 50-150Hz LP Crossover
Variable 12dB 45Hz Bass Boost
180° Phase Switch
>95dB Signal-to-Noise Ratio
0.05% Total Harmonic Distortion
Remote Gain Control Included
Dimensions: 3"h x 9.5"w x 14.5L



Reference Components

When it comes to making a component speaker worth listening too, you have to think outside of the box. That's what we do at Soundstream, and that is exactly what we did for 2014. The RC.6 uses non-traditional driver material to be innovative but also sound amazing. Everyone knows paper sounds better, but we use an aerated paper cone for a lighter, stronger cone resulting in a very natural sound. The tweeter in this set uses a PST (puffed silk tweeter) this results in the strongest and lightest silk tweeter on the market without adding any weight, thus being more efficient.

TWEETER:

2.00" Machined Aluminum Housing
PST (Puffed Silk Tweeter Technology)
0.5" Mounting Depth

WOOFER:

6.5" Mid-woofer
APC (Aerated PaperCone Technology)
Cast Aluminum Frame
Nickel Plated Spring Terminals
2.5" Mounting Depth

RC.6	
Size & Type	6.5" 2-way
MAX Power (watts)	400
RMS Power (watts)	200
System Efficiency	93db
Top Mount Depth	2.34"



Picasso Components

Polypropylene Injection Cone
Solid Aluminum Phase Plug
NBR Rubber Surround
1" Voice Coil on Aluminum Former
Quick Disconnect Terminals
Conex Spider Suspension
1" Teteron Dome Tweeter
Pivoting Flush Mount Tweeter
Passive Crossover Included
Tarantula Spider Grill Included
Frequency Response: 60-20kHz

PC.6	
Size & Type	6.5" 2-way
MAX Power (watts)	240
RMS Power (watts)	120
System Efficiency	92dB
Top Mount Depth	2.625"



STEALTH Components

WAIT! DO NOT let this little component set fool you. Once a dust-bunny covered relic in the "useless sample" bin at Soundstream headquarters, the new Stealth components took us all by surprise. It was originally thought to be a passive radiator, but to our amazement, these lil' guys PACK A PUNCH!!!

Even with only 1" mounting depth, the 6.5" woofer is capable of reproducing the lowest of lows and snappiest kick bass with very little effort! An inverted neodymium motor structure allows a shallow and compact profile frame. The tweeter is a smooth & crisp 1.25" inverted dimpled Titanium dome diaphragm with phase plug.

Shallow Mount High Efficiency Component Set
Low Resonance Polycarbonate Frame
1" Mounting Depth!

1-Piece Polypropylene Dome Cone
High Strength Neodymium Magnets
1" Titanium Inverted Dome Tweeter
Passive 12dB Crossover Included
+/- 3dB Tweeter Attenuation Switch
PTC Tweeter Protection



STL.65C	
Size & Type	6.5" 2-way
MAX Power (watts)	160
RMS Power (watts)	80
System Efficiency	94dB
Top Mount Depth	1"

ARACHNID Components

Polypropylene Injection Cone
NBR Rubber Surround
1" Voice Coil on Aluminum Former
Quick Disconnect Terminals
Conex Spider Suspension
1" Flush Mount Dome Tweeter
Passive Crossover Included
Speaker Grill Included
Frequency Response: 70-20kHz

SC-6T	
Size & Type	6.5" 2-way
MAX Power (watts)	160
RMS Power (watts)	80
System Efficiency	92dB
Top Mount Depth	2.50"



TARANTULA

Full Range

Following the high fidelity qualities of the Reference RC-6 component set, we're proud to introduce the newest generation of SST coaxial speakers. Adopting similar materials and technology, these direct replacement speakers yield sonic qualities you'd expect only from Soundstream Reference series.

Painstakingly engineered, SST speakers feature our aerated paper cone material and puffed silk dome tweeter, creating the most dynamic sound quality possible. Seamless, phase coherent blending of the cone and tweeter give your music texture, presence and the airiness of a live performance. It's these harmonics that pull emotion and all your senses back to the listening experience.



Aerated Paper Cone w/ Cone Stiffening Ribs
Acoustic Guide Tweeter w/ Phase Alignment
Phase Optimized 1" Puffed Silk Dome Tweeter
1" Aluminum Voice Coil
Quick Disconnect Terminals
Snap-In Grills Included

SST SPEAKERS	SST.652	SST.692
Size and Configuration	6.5" 2-way	6" x 9" 2-way
MAX Power (watts)	260w	360w
RMS Power (watts)	130w	180w
Efficiency (1w/1m dB)	88.5dB	90.9dB
Top Mount Depth	2.25"	3.00"

SST.652

Picasso Full Range



Polypropylene Injection Cone
NBR Rubber Surround
1" Voice Coil on Aluminum Former
Quick Disconnect Terminals
Conex Spider Suspension
2" Mylar Midrange (PF-693)
1" Mylar Tweeter
4-Ohm System Impedance

PF.693

PF.653

PICASSO SPEAKERS	PF.693	PF.653
Size and Configuration	6"x9" 3-way	6.5" 3-way
MAX Power (watts)	350w	250w
RMS Power (watts)	130w	90w
Efficiency (1w/1m dB)	94dB	93dB
Top Mount Depth	3.25"	2.25"

ARACHNID

Full Range



SF.693T

SF.652T

SF.573T

SF.402T

SF.502T

ARACHNID SPEAKERS	SF.693T	SF.652T	SF.573T	SF.502T	SF.402T
Size and Configuration	6"x9" 3-way	6.5" 2-way	5"x7" 3-way	5.25" 2-way	4" 2-way
MAX Power (watts)	200	120	120	100	80
RMS Power (watts)	100	60	60	50	40
Efficiency (1w/1m dB)	92.00	92.00	92.00	92.00	92.00
Mounting Depth	3.25"	1.75"	2.625"	2.25"	1.75"

TWEETERS

TWS.1 1" Soft Dome Tweeter

Ferrofluid cooled
Neodymium magnet
Tri-Mounting - flush, surface or angle
12dB/Octave passive crossover included
Rated Input Power: 110W
Impedance: 4ohm
Freq. Resp. 3KHz - 20KHz
SPL 93dB



TWT.2 1" Horn Loaded Titanium Dome Tweeter

Flush mount aluminum housing
Threaded housing w/ collar for easy installation
Ferro fluid cooled
Neodymium magnet
12dB/Octave passive crossover included
Rated Input Power: 120W
Impedance: 4 ohm
Freq. Resp. 3KHz - 22KHz
SPL 94dB



TWS.3N 1" PEI Dome Tweeter

Tri-Mounting - flush, surface or angle
Adjustable eyeball design
Built-in 12 dB In-Line Crossover
Rated Input Power: 110W
Impedance: 4 ohm
Freq. Resp. 2KHz-21KHz
SPL 94dB



TWS.4 1" Tantalum Dome Tweeter

Polished aluminum housing
Dual-Mounting - surface or angle
Built-in 12 dB In-Line Crossover
Rated Input Power: 110W
Impedance: 4 ohm
Freq. Resp. 5KHz-25KHz
SPL 95dB



TWT.5 1" PEI Dome Tweeter

Surface or Angled Mounting
12dB Passive Crossover Included
Rated Input Power: 110W
Impedance: 4 ohm
Freq. Resp. 2KHz-21KHz
SPL 97dB



Got an oscilloscope? Probably not... How about an ammeter? Doubtful too... But everybody has or can easily get an adequate Digital Volt Meter for \$20 or so. Many people think they have power from their amps equal to the rating. Very rarely! Seasoned competitors know how to tune their system with a DVM. But they do not measure Wattage, but rather AC Voltage. The new X3 amps are based off of voltage for tuning convenience. The included chart will tell you exactly how much power you can get from the amplifiers at 12V, 14.4V and 16V, and at 1, 2, and 4 ohms, and even at 1%, 5% and 10% THD! If you are not getting what the chart says you should, you know for a fact that you do not have sufficient power supply in the form of batteries. Or maybe you have a lot higher impedance or enclosure impedance rise than you suspected. Either way, you will know how much power you are getting out of your X3 amplifier and can take the step needed to use the X3 amps to their winning potential. It is that simple...



X3 AMPLIFIERS	X3.2K4	X3.60	X3.71
RMS Power 4Ω, 14.4V, 1% THD	250 x 4	1,050 x 1	1,750 x 1
RMS Power 2Ω, 14.4V, 1% THD	400 x 4	1,920 x 1	3,240 x 1
RMS Power 1Ω, 14.4V, 1% THD	600 x 4	2,780 x 1	4,450 x 1
RMS Power 4Ω, 16V, 10% THD	-	3,180 x 1	2,010 x 1
RMS Power 2Ω, 16V, 10% THD	-	2,300 x 1	3,780 x 1
RMS Power 1Ω, 16V, 10% THD	-	3,180 x 1	5,180 x 1
Remote Gain Control	Included	Included	Included
Dimensions (11.5" w x 2.5" h)	15.75"	21.00"	23.75"

1-Ohm Stable Class D Competition Amplifiers
Non-regulated MOSFET Power Supply
Up to 16V Power & 10V Audio Input
0ga Input & 8ga Output Terminals
4ch. Bridgeable w/ 2-Ohm, 1-Ohm Stereo
Monoblocks Strapable w/ 2Ω Load
12dB High/Low Pass Crossovers (4ch)
18dB Low-Pass & Subsonic Crossovers (mono)
Variable 18dB 45Hz Bass Boost
180° Phase Control (mono)
Remote Gain Control (mono)

XBP-10 SPL Competition Signal Processor

2 Signal Paths - Sound Quality & SPL
Individual Level Control for each Signal Path
5Volt or 10Volt Signal Voltage Switch
50Hz Tone Generator for Tuning
Variable 25-85Hz Bass EQ
Dash Remote with Boost Level, Subsonic Filter, and SQ-to-SPL Signal Path Switch
4 Pairs of Outputs - 1 Main and 3 w/ Variable Delay for Time Alignment of Subwoofers
Through Pass Outputs
Turn On/Off Delay to Eliminate Pops
Plexi Glass Setting Cover Included





SST-05
(pair)



SST-20



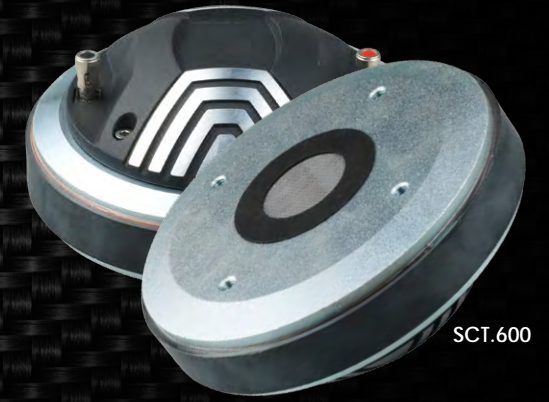
SST-22



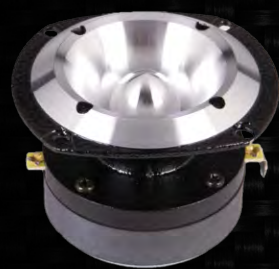
SCT.340



SCT.440



SCT.600



SPT-200



SPT-205



SPT-30



SPT-35



SMD.200



SMD.202



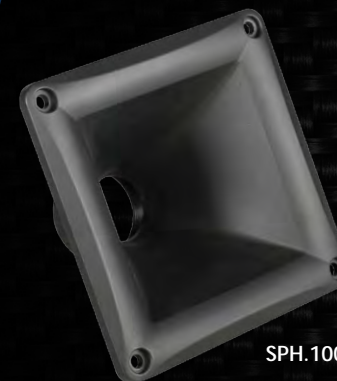
SPT-300



SPT-305



SPT-325



SPH.100



SPH.300



SPH.400

Pro Audio Tweeters	SST-05	SST-20	SST-22	SPT-30	SPT-35	SPT-200	SPT-205	SPT-300	SPT-305	SPT-325
MAX Power Handling	100w	90w	100w	100w	100w	70w	100w	70w	100w	140w
Diaphragm Size/Type	1" Aluminum	2" Aluminum	2" Aluminum	2" Composite	2" Composite	1" Aluminum	1.75" Aluminum	1" Aluminum	1.75" Aluminum	3" Aluminum
Impedance	4-Ohm	4-Ohm	4-Ohm	8-Ohm	4-Ohm	4-Ohm	8-Ohm	4-Ohm	4-Ohm	4-Ohm
Frequency Response	3kHz-20kHz	4kHz-20kHz	4kHz-20kHz	3kHz-20kHz	3kHz-20kHz	4kHz-20kHz	3kHz-20kHz	4kHz-20kHz	3kHz-20kHz	2.5Hz-20kHz
Efficiency (1w/1m)	109dB	105dB	107dB	105dB	107dB	103dB	105dB	105dB	107dB	109dB
Mounting Depth	1.5"-2"	2.25"	2.125"	2.25"	3.25"	2.25"	2.50"	2.25"	2.25"	4.00"

Compression Drivers	SCT.340	SCT.440	SCT.600	SMD.200	SMD.202
Type	Tweeter	Tweeter	Tweeter	Midrange	Midrange
Diaphragm Type	Titanium	Titanium	Titanium	Composite	Composite
MAX Power Handling	100w	130w	240w	100w	100w
Impedance	8-Ohm	8-Ohm	8-Ohm	4-Ohm	4-Ohm
Frequency Response	1.5kHz-20kHz	1.3kHz-20kHz	1kHz-20kHz	500-7kHz	500-7kHz
Efficiency (1w/1m)	104dB	107dB	108dB	106dB	108dB

Tweeter Horns	SPH.100	SPH.300	SPH.400
Size & Type	1" Screw-on	1" Screw-on	2" Bolt-on
Material	ABS	IMPP	Aluminum
Mounting Depth	2.75"	3.25"	4.75"



SME.654
SME.658
SME.804
SME.808



SM.654P



SM.654N
SM.804N

Neodymium	SM.654N	SM.804N
Size	6.5"	8"
MAX Power Handling	250w	350w
Impedance	4-Ohm	4-Ohm
Frequency Response	180-10kHz	135-8kHz
Efficiency (1w/1m)	97dB	98dB
Mounting Depth	2.75"	3.25"



SME.694



SMS.654
SMS.804
Shallow Mount
Cast Aluminum



SMC.654
SMC.804

2-WAY PRO AUDIO SPEAKER WITH COMPRESSION TWEETER!



SP2.694

SP2.654

SP2.804

Pro Audio Midrange Drivers	SME.654	SME.658	SM.654P	SME.694	SME.804	SME.808	SMS.654	SMS.804	SMC.654	SMC.804
Size	6.5"	6.5"	6.5"	6"x9"	8"	8"	6.5"	8"	6.5"	8"
MAX Power Handling	170w	170w	170w	185w	300w	300w	225w	300w	330w	470w
Impedance	4-Ohm	8-ohm	4-Ohm	4-Ohm	4-Ohm	8-ohm	4-ohm	4-Ohm	4-Ohm	4-Ohm
Frequency Response	150-10kHz	150-10kHz	150-10kHz	120-8kHz	120-8kHz	120-8kHz	150-6kHz	140-6kHz	180-8kHz	150-6.5kHz
Efficiency (1w/1m)	96dB	96dB	96dB	97dB	98dB	98dB	96dB	98dB	98dB	100dB
Mounting Depth	2.75"	2.75"	2.75"	3.25"	3.25"	3.25"	2.25"	2.75"	3.25"	3.75"

Pro Audio Coaxial Driver	SP2.654	SP2.694	SP2.804
Size	6.5"	6"x9"	8"
MAX Power Handling	225w	250w	300w
Impedance	4-Ohm	4-Ohm	4-Ohm
Frequency Response	150-8kHz	150-20kHz	140-6kHz
Efficiency (1w/1m)	96dB	97dB	98dB
Mounting Depth	3.125"	3.50"	3.50"

PRO2.XVR

Crossover for all SP2 2-way Pro Audio Speakers w/ Compression Tweeter



BASS PROCESSORS

BX-22i Digital Bass Reconstruction Processor

High Tolerance SMD Technology
All Aluminum Chassis
Dash Mount Remote Control
PFM Subsonic Filter & Bass Level Control
Parametric Bass Equalizer
Variable Frequency Sweep
Variable Q Width
Variable PWM Subsonic Filter
Low Level RCA Input
Low Level RCA Output
Signal Sense Remote Turn-on
PWM High Head Room Power Supply
Frequency Response: 10Hz 100KHz
THD: 0.002%
S/N Ratio: 132dB
Balanced Input Noise Rejection: 60 dB
MAX Output Level: 13.5 volt



BX-20Z Digital Bass Reconstruction Processor

Max Bass Control
Dash Mount Remote Control
PFM Subsonic Filter & Bass Level Control
Illuminated logo and knobs
Chrome Logo Plate
Bass Restoration Lighted Display
Parametric Bass Control
PFM Subsonic Filter
Balanced Inputs
Bass Output Control
PWM High Head Room Power Supply
Output Level: 13.5 volt
Frequency Response: 10Hz 100KHz
THD: 0.002%
S/N Ratio: 132dB
Balanced Input Noise Rejection: 60 dB



BX-15 Digital Bass Reconstruction Processor

Max Bass Control
PWM High Head Room Power Supply
Balanced Input Noise Rejection: 60 dB
Frequency Response: 10Hz 100KHz
Dash Mount Remote Control
PFM Subsonic Filter & Bass Level Control
Illuminated logo and knobs
Brushed Aluminum Case & Handles
Bass Restoration Lighted Display
Parametric Bass Control
PFM Subsonic Filter
Balanced Inputs
Bass Output Control
Output Level: 13.5 volt
THD: 0.002%
S/N Ratio: 132dB



BASS PROCESSORS

BX-12 (black) BX-12W (white) Digital Bass Reconstruction Processor

Max Bass Control
PWM High Head Room Power Supply
Frequency Response: 10Hz 100KHz
Dash Mount Remote Control
Bass Restoration Lighted Display
Parametric Bass Control
PFM Subsonic Filter
Balanced Inputs
Bass Output Control
Output Level: 13.5 volt
THD: 0.003%
S/N Ratio: 130dB
Balanced Input Noise Rejection: 60 dB



BX-10X Digital Bass Reconstruction Processor

Max Bass Control
PWM High Head Room Power Supply
Frequency Response: 10Hz 100KHz
Dash Mount Remote Control
Bass Restoration Lighted Display
Parametric Bass Control
PFM Subsonic Filter
Balanced Inputs
Bass Output Control
Output Level: 13.5 volt
THD: 0.003%
S/N Ratio: 130dB
Balanced Input Noise Rejection: 60 dB



BX-10 (black) BX-10W (white) Digital Bass Reconstruction Processor

Max Bass Control
PWM High Head Room Power Supply
Frequency Response: 10Hz 100KHz
Dash Mount Remote Control
Bass Restoration Lighted Display
Parametric Bass Control
PFM Subsonic Filter
Balanced Inputs
Bass Output Control
Output Level: 13.5 volt
THD: 0.003%
S/N Ratio: 130dB
Balanced Input Noise Rejection: 60 dB



MPQ-7B 1/2 DIN 7-Band Graphic EQ w/ Subwoofer Level Control

30V Bipolar Switching Power Supply
20dB Headroom Eliminated Signal Overload
2 Selectable Balanced RCA Inputs w/ Input gain
Front, Rear, & Subwoofer RCA Outputs
Seven Frequency Bands with +/- 18dB Boost/Cut
40Hz, 100Hz, 275Hz, 700Hz, 2kHz, 5kHz, 14kHz
Independent Subwoofer Level Control
Selectable Low-Pass Filter: 32Hz, 64Hz, 125Hz
Input Selector Switch
Fade Control
Blue Backlit Control Knobs
S/N Ratio: 115dB
THD: 0.05%
Stereo Separation: 82dB
Frequency Response: 10Hz-15kHz
Max Output Voltage: 8V



MPQ-7XO 1/2 DIN Dual Channel Multi-Band Graphic EQ

20dB Headroom Switching Power Supply
Built-in Low Noise Bi-FET Op-Amps
2 Selectable Balanced RCA Inputs w/ Input Gain
Front, Rear, & Subwoofer RCA Outputs
Four 18dB Front Bands 125Hz; 500Hz; 3.5kHz; 12kHz
Three 18dB Rear Bands 50Hz; 600Hz; 6.3kHz
Variable 18dB Bass Boost: 20-70Hz
Independent Subwoofer Level Control
Selectable Subsonic Filter: 32Hz; 64Hz; 125Hz
Fade Control
Blue Backlit Control Knobs
Frequency Response: 10-100kHz
Output Signal Voltage Up To 8V
THD: .05%
Signal-to-Noise Ratio: 115dB
7" w x 4.25" d x 1.125" h



MPQ-5XO 1/2 DIN 3-Band Parametric EQ w/ Subwoofer Level Control

20dB Headroom Switching Power Supply
Built-in Low Noise Bi-FET Op-Amps
2 Selectable Balanced RCA Inputs w/ Variable Input Gain
Front, Rear, & Subwoofer RCA Outputs
3 Variable Bandwidths: 18dB of Equalization
150-400Hz (Bass); 1.5-4kHz (Mid); 4-20kHz (High)
Variable 18dB Bass Boost: 20-70Hz
Independent Subwoofer Level Control
Variable Subsonic Filter: 50-250Hz
Fade Control
Blue Backlit Control Knobs
Frequency Response: 10-100kHz
Output Signal Voltage Up To 10V
THD: .005%
Signal-to-Noise Ratio: 110dB
7" w x 3.625" d x 1.125" h



SCX-1.5 1.5 Farad Power Capacitor

12-16 DC Input Voltage
Red LED Voltage Meter
Bolt Post for Ring Terminal



SCX-2 2 Farad Power Capacitor

SCX-4 4 Farad Power Capacitor

12-16 DC Input Voltage
Blue LED Voltage Display
Chrome Plated Chassis
Bolt Post for Ring Terminal



SC-8F 8 Farad Power Capacitor

12-16 DC Input Voltage
Blue LED Voltage Display
Oga Power Input w/ 4ga Reducer



AMPLIFIER INSTALLATION

Complete D.I.Y. Installation Kits

WK-2G 2AWG Installation Kit w/ 100A ANL Fuse

WK-4G 4AWG Installation Kit w/ 80A M-ANL Fuse

WK-8G 8AWG Installation Kit w/ 60A AGU Fuse

All Installation Kits Include:

17ft Translucent Black Power Wire
3ft Translucent Clear Ground Wire
25ft Twisted Pair Speaker Wire
1pc. 17ft Twisted Pair RCA Interconnect Cable
17ft Translucent Black Remote Turn-on Wire
Fuse Holder w/ Appropriate Fuse
Complete Installation Accessories



MARINE SOURCE UNITS



SMR-31B (w/ Bluetooth V2.0)
Single DIN CD Player w/32GB USB Playback

NEW

- CD/MP3, AM/FM & USB Receiver
- Theft Deterrent Detachable Faceplate
- Bluetooth V2.0 Hands Free Calling from Enabled Phone
- A2DP MP3 Audio Playback from Enabled Device
- Playback from 32GB USB of MP3 & WMA
- Playback from CD, CDR, CDRW of MP3 & WMA
- AUX Audio Input for Personal Media Devices
- Front & Rear Pre-Amp Output
- 52w x 4 MOSFET Speaker Outputs
- Custom & Pre-Set Equalizer Settings
- Audio Staging Controls
- 12/24 Hour Digital Clock
- Remote Control Included
- Faceplate Carry Case Included



Rubicon NANO

MARINE AMPLIFIERS



- High Efficiency Class D Full Range Amplifiers
- Hybrid Aluminum Alloy Heatsink for Optimum Dissipation
- 2-ohm Stereo & 4-ohm Bridged Class D Full Range
- 1-ohm Minimum Impedance Monoblock Operation
- MOSFET Power Supply w/ Audiophile Grade IRTM Transistors
- Military Grade SMT PCB Maintains Dynamic Performance
- Direct Short, Thermal, & Overload Circuits Protect Amplifier
- 200mV-6V Low Level RCA or High Level Signal Input
- Quick Disconnect High Level Wire Harness Included
- Easy DIY Install Single Sided Terminals & Controls
- 4g Power Inout Terminals & 12g Speaker Output Terminals
- Variable 12dB High Pass, Low Pass, & Subsonic Crossovers
- 12dB Bass Boost Increases Low Octave Harmonics
- Dash Mount Gain Control Module Included (monoblocks)

NEW

Rubicon Nano	MR4.1400D	MR5.2000D	MR1.2000D
RMS Power 4Ω	125 x 4	75 x 4 + 500 x 1	400 x 1
RMS Power 2Ω	175 x 4	100 x 4 + 400 x 1	600 x 1
RMS Power 4Ω Bridged	350 x 2	200 x 2 + 600 x 1 (1Ω)	1,000 x 1
Remote Gain Control	-	Included	Included
Dimensions: (6.50" w x 1.50"h)	9.00"	12.00"	10.00"

MARINE AMPLIFIERS

STEALTH



NEW

95%+ Efficient
Class D Full Range

Only 3" x 6" !

Install-Me-Anywhere
Micro Footprint

- Hybrid Aluminum Alloy Heatsink for Optimum Dissipation
- 2-ohm Stereo & 4-ohm Bridged Full Range Operation
- 2-ohm Minimum Impedance Monoblock Operation
- MOSFET Power Supply w/ Audiophile Grade IR™ Transistors
- Military Grade SMT PCB Maintains Dynamic Performance
- Direct Short, Thermal, & Overload Circuits Protect Amplifier
- 200mV-12V High Level or Low Level RCA Input
- Quick Disconnect RCA/High Level Wire Harness
- Quick Disconnect Power and Speaker Output Harness
- Variable 12dB High Pass, Low Pass, & Subsonic Crossovers
- 12dB Bass Boost Increases Low Octave Harmonics (monoblock)
- Dash Mount Gain Control Module Included (select models)

Stealth Amplifiers	SM4.1000D	ST4.1000DB	SM1.700D
RMS Power 4Ω	90 x 4	90 x 4	250 x 1
RMS Power 2Ω	125 x 4	125 x 4	350 x 1
RMS Power 4Ω Bridged	250 x 2	250 x 2	-
MAX Power	1000w	1000w	700w
Remote Gain Control	-	-	Included
Dimensions (3"w x 1.5"h)	6.50"	6.50"	6.50"

MARINE SPEAKERS

Marine Grade Waterproof Coaxial Speaker
 Fiber Reinforced ABS Frame w/ UV Protection
 1" Titanium Dome Tweeter
 Injection Molded Polypropylene Cone
 Butyl Rubber Surround w/ UV Protection
 Moisture Isolated Magnet Structure
 Rubber Tweeter Pole Gasket
 Quick Disconnect Terminals
 Meets ROHS & CE Certification

NEW

SST SPEAKERS	MS.65W	MS.65B
Size and Configuration	6.5" 2-way	6.5" 2-way
Color	White	Black
MAX Power (watts)	80w	80w
RMS Power (watts)	160w	160w
Efficiency (1w/1m dB)	86dB	86dB
Top Mount Depth	3.00"	3.00"



POWER SPORT SPEAKERS



100% Waterproof Enclosure & 4" Speaker System
 High Density ABS Construction w/ UV Coating
 Integrated Mounting Bracket Fits Most Roll Bar or Handlebar
 Injection Molded Polypropylene Cone
 1" Titanium Dome Tweeter
 Quick Disconnect Wire Terminals
 Meets ROHS and CE Certifications
 4-ohm System Impedance

NEW

Powersport Speakers	Size & Color	MAX Power	RMS Power	Frequency Response	Efficiency (1w/1m dB)	Overall Size (HxWxL)
PSS.4	4" Titanium	100w	50w	100-20kHz	90dB	5" x 5" x 7"

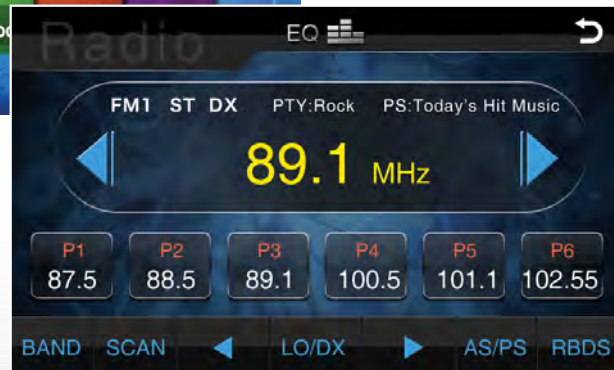
BTR.1 Bluetooth Remote Control

Handlebar Or Steeringwheel Mount Bluetooth Controller w/ Built-In Bluetooth V3.0
 Play Music With Any Paired Bluetooth Enabled Device
 Connects To Any Amplifier With Auxilairy 3.5mm Or RCA Input
 Waterproof For Use On Motorcycles, Off-Road Vehicles Or Personal Watercraft
 Surface Mounting Hardware Included
 Direct Power/Ground Connections w/ Remote Turn-on Trigger

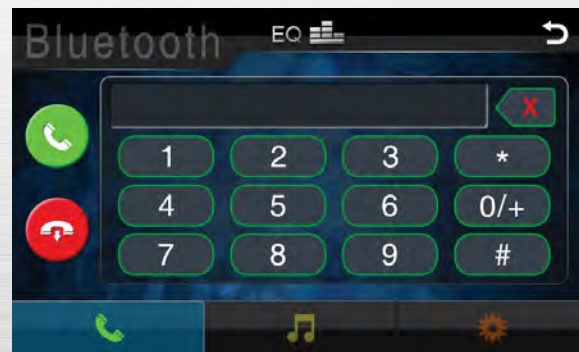
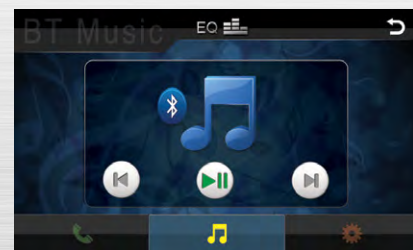
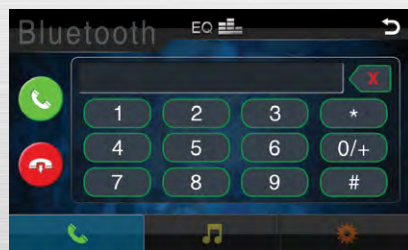


NEW

MobileLink 8.2 mobile device integration enables complete control of your smartphones and tablets. Conveniently launch any application, post social media updates, or play your own videos and all other content on your mobile device. Your smart device display is mirrored to the head units larger LCD screen, and all commands are sent via Bluetooth 3.0 connection. MobileLink 8.2 ensures safe, hands-free operation of your smart device without the distractions of locating & handling the device. MobileLink integration cables are available for select Android enabled devices.



Bluetooth V3.0 with Enhanced Data Rate increases traditional data transfer rates to 2.1 Mbit/s. This lightning quick information transfer increases clarity & virtually eliminates unwanted distortion during calls and wireless MP3 audio playback. Most Bluetooth enabled Smartphones will transfer phone book contacts, view recent call logs, and stream MP3 audio tracks.



MobileLink Interface Cables

HDM-i4 ~ iPhone4, iPhone4S, iPad2, & iPad3

HDM-A2 ~ Galaxy 2 & Select 5-Pin Android Devices

HDM-A3 ~ Galaxy 3, 4, & Select 11-PIN Android Devices

5ft interface cable unlocks 1080p video and audio playback from enabled mobile devices. Each interface cable features the appropriate micro connector for your mobile device. Soundstream MobileLink interface cables also charge your mobile device. Available for select iOS and Android devices.



VR-64H2B

1-DIN DVD, CD/MP3, AM/FM Receiver w/ 7" LCD, Bluetooth, & MobileLink 8.2

2-DIN Multimedia Receiver w/ 6.2" LCD & MobileLink 8.2
 Complete Integration of Select Android Enabled Devices (requires MobileLink accessory cable, sold separate)
 Bluetooth V3.0 Hands-Free Calling from Enabled Phone
 A2DP Wireless MP3 Audio Playback from Enabled Devices
 Built-in Microphone & External Microphone Included
 Accepts Fahrenheit OEM & Steering Wheel Control Interface
 Advanced FM/AM Tuner with RDBS Receiver
 Playback from DVD & CD of MP3 & MP4
 Playback from 64GB SD/USB of MP3 & MP4
 ID3 MP3 Tag Reading for Track & Artist Information
 AUX Audio Input for Personal Media Devices
 Front & Rear Pre-Amp Audio Outputs
 Variable Subwoofer Pre-Amp Output
 Video Output for Auxiliary Devices
 Rear View Camera Input w/ Trigger
 300w 4ch. MOSFET Speaker Outputs
 Multi-Region FM Frequency Stepping
 800x480 Widescreen Resolution
 400NIT LED Backlight



NEW



VR-74H2B

2-DIN DVD, CD/MP3, AM/FM Receiver w/ 6.2" LCD, Bluetooth, & MobileLink 8.2

1-DIN Multimedia Receiver w/ 7" LCD & MobileLink 8.2
 Complete Integration of Select Android Enabled Devices (requires MobileLink accessory cable, sold separate)
 Bluetooth V3.0 Hands-Free Calling from Enabled Phone
 A2DP Wireless MP3 Audio Playback from Enabled Devices
 Built-in Microphone & External Microphone Included
 Accepts Fahrenheit OEM & Steering Wheel Control Interface
 Advanced FM/AM Tuner with RDBS Receiver
 Playback from DVD & CD of MP3 & MP4
 Playback from 64GB SD/USB of MP3 & MP4
 ID3 MP3 Tag Reading for Track & Artist Information
 AUX Audio Input for Personal Media Devices
 Front & Rear Pre-Amp Audio Outputs
 Variable Subwoofer Pre-Amp Output
 Video Output for Auxiliary Devices
 Rear View Camera Input w/ Trigger
 300w 4ch. MOSFET Speaker Outputs
 Multi-Region FM Frequency Stepping
 800x480 Widescreen Resolution
 400NIT LED Backlight



NEW



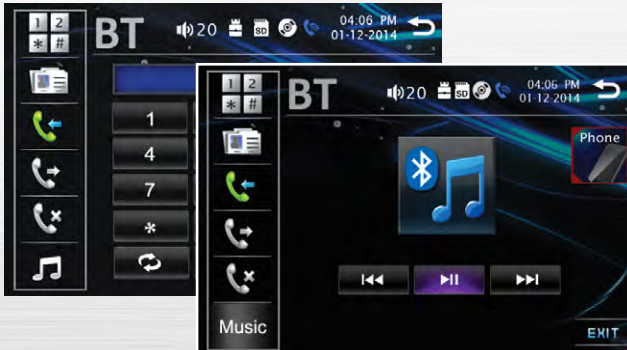


MobileLink opens mirroring of smartphones and tablets to enabled in-car entertainment systems. Share with other passengers your own movies, social networking content, internet videos, or anything else your mobile device displays. Easily follow your smartphone's navigation commands on the larger head unit LCD instead of the smaller smart phone display. MobileLink replicates the image of your smart device onto the LCD screen of several in-car entertainment products, including select Mobile 8.1 source units, headrests, and overhead displays. MobileLink integration cables are available for select Android and iOS smart devices.

Bluetooth V3.0 with Enhanced Data Rate increases traditional data transfer rates to 2.1 Mbit/s. This lightning quick information transfer increases clarity & virtually eliminates unwanted distortion during calls and wireless MP3 audio playback. Most Bluetooth enabled Smartphones will transfer phone book contacts, view recent call logs, and stream MP3 audio tracks.

Digital Signal Processing features include a digital 4-band equalizer with 7dB boost or cut, custom presets & factory presets. Additional DSP functions include variable subwoofer level control with lowpass crossover, loudness adjustment, & sound staging controls.

Customizing options include several preloaded background images & variable color front panel illumination. Choose a specific color to match your interior lighting scheme or random color change for a full color spectrum effect.



VR-626HB Double DIN Mobile 8.1 Multimedia Source Unit w/ 6.2" LCD Touch Screen

2-DIN Multimedia Receiver w/ 6.2" LCD & MobileLink
On-Screen Mirroring of Select Android Smart Devices
Bluetooth V3.0 Hands-Free Calling from Enabled Phone
A2DP Wireless MP3 Audio Playback from Enabled Devices
Accepts Fahrenheit OEM & Steering Wheel Control Interface
Custom Backgrounds & 17 Million Color Illumination
Advanced FM/AM Tuner with RDBS Receiver
Playback from DVD & CD of MP3 & MP4
Playback from 32GB SD/USB of MP3 & MP4
ID3 MP3 Tag Reading for Track & Information
AUX Audio Input for Personal Media Devices
RCA A/V Input for Auxiliary Sources
4-Band Audio Equalizer w/ User Presets
Front & Rear Pre-Amp Audio Outputs
Variable Subwoofer Pre-Amp Output
Variable Subwoofer Low Pass Crossover
Video Output for Auxiliary Devices
Rear View Camera Input w/ Trigger
300w 4ch. MOSFET Speaker Outputs
Multi-Region FM Frequency Stepping
800x480 Widescreen Resolution
400NIT LED Backlight



NEW



VR-726HB Single Din Mobile 8.1 Multimedia Source Unit w/ 7" Flip-Up LCD Touch Screen

1-DIN Multimedia Receiver w/ Motorized 7" LCD & MobileLink
On-Screen Mirroring of Select Android Smart Devices
Bluetooth V3.0 Hands-Free Calling from Enabled Phone
A2DP Wireless MP3 Audio Playback from Enabled Devices
Accepts Fahrenheit OEM & Steering Wheel Control Interface
Custom Backgrounds & 17 Million Color Illumination
Advanced FM/AM Tuner with RDBS Receiver
Playback from DVD & CD of MP3 & MP4
Playback from 64GB SD/USB of MP3 & MP4
ID3 MP3 Tag Reading for Track & Information
AUX Audio Input for Personal Media Devices
RCA A/V Input for Auxiliary Sources
4-Band Audio Equalizer w/ User Presets
Front & Rear Pre-Amp Audio Outputs
Variable Subwoofer Pre-Amp Output
Variable Subwoofer Low Pass Crossover
Video Output for Auxiliary Devices
Rear View Camera Input w/ Trigger
300w 4ch. MOSFET Speaker Outputs
Multi-Region FM Frequency Stepping
800x480 Widescreen Resolution
400NIT LED Backlight

NEW



MobileLink Interface Cables

- HDM-i4 - iPhone4, iPhone4S, iPad2, & iPad3
- HDM-A2 - Galaxy 2 & Select 5-Pin Android Devices
- HDM-A3 - Galaxy 3, 4, & Select 11-PIN Android Devices

5ft interface cable unlocks 1080p video and audio playback from enabled mobile devices. Each interface cable features the appropriate micro connector for your mobile device. Soundstream MobileLink Interface cables also charge your mobile device. Available for select iOS and Android devices.



Soundstream INGENIX powered source units use a proprietary engine featuring 800 MHz CPU processor & WIN CE 6.0 operating system. Commonly found in compact netbooks, such lightning fast function processing has not been possible in an aftermarket automotive multimedia system, until now. INGENIX programming brings unique feature applications to your fingertips.



Go ahead, take a second look....

The primary menu of the INGENIX source units has an appeal that you might expect only from a computer. The LED back light Full HD quality 800x480 screen resolution yields a crisp image. Drag any mode application icon from the slide menu at the bottom of the screen and drop it onto the desktop as a shortcut. Utilize the drop down widget menu for quick settings access. The main menu background and brightness settings can be set to change automatically at night. There's even a scrolling marquee banner displaying your short message.



Bluetooth V2.1 + EDR Connectivity

Bluetooth V2.1 with Enhanced Data Rate increases data transfer rates to 2.1 Mbit/s. This lightning quick information transfer increases clarity & virtually eliminates unwanted distortion during calls and wireless MP3 audio playback. Most Bluetooth enabled Smartphones will transfer phone book contacts, view recent call logs, and stream MP3 audio tracks.



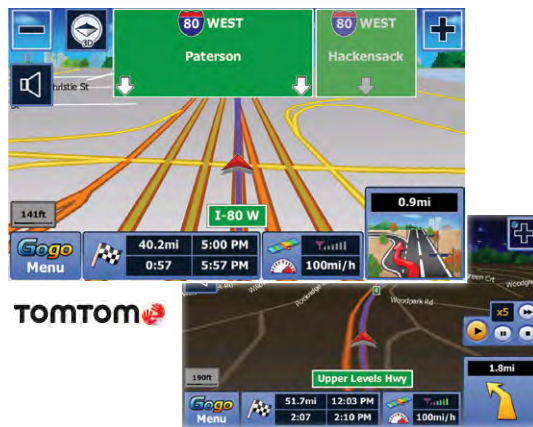
Streaming Bluetooth Music (A2DP)

Pair your Bluetooth enabled cell phone, Smartphone, iPhone, or iPod Touch for wireless MP3 playback. Use the touch screen controls for basic operations.



32GB SDHC & USB 2.0 Reader

Playback MP3, WAV, FLAC, & AC3 audio files, or MP4, WMV, & XviD video files from up to a 32GB SDHC card or USB 2.0 mass storage device. Artwork transfers from enabled device, if available. INGENIX units will read files from a USB powered portable hard drive, up to 250GB capacity.



Built-in GPS Navigation

All Ingenix powered source units come standard with GPS turn-by-turn navigation for USA & Canada (other countries available). Set your destination and enjoy text-to-speech directions with lane guidance. Additional features include favorites list, programmable home destination, destination fuel estimates, multi-lingual, multi-gender voices, speed limit warnings, and more. Maps and POI data by TomTom.

ADDITIONAL FEATURES

- Dual Zone for Rear Seat or Overhead Entertainment
- Adjustable Video Output Screen Ratio & Image Positioning
- Utility Application w/ Memo Pad, Calculator, Calendar, Car Maintenance, Texas Hold 'em Poker, & World Clock
- 4V Front, Rear & Subwoofer Pre-amp Output
- Front Panel 3.5mm AUX A/V Input
- A/V Input from Auxiliary Source
- Rear View Camera RCA Input w/ Trigger
- JPG, BMP, & GIF Photo Browser
- Upload Custom Screen Savers
- Remote Control Sold Separately
- Digital & Analog TV Tuners Available
- NTSC/PAL Video Playback
- 50W x 4 MOSFET Speaker Outputs
- 400NIT Panel Brightness
- Accepts Axess Steering Wheel Interface
- JPG, BMP, & GIF Photo Browser
- Upload Custom Screen Savers
- Remote Control Sold Separately
- Digital & Analog TV Tuners Available
- NTSC/PAL Video Playback
- 50W x 4 MOSFET Speaker Outputs
- 400NIT Panel Brightness



Picture-in-Picture

INGENIX is the first to bring the Picture-in-Picture function into the car. PIP allows uninterrupted video playback while simultaneously viewing the GPS navigation map in real time, as it happens. The picture can be re-sized and positioned to 3 different ratios.



Full iPod Control Integration (requires IP-5C)

Scroll through your iPhone, iPod Touch, Classic, or Nano to find your favorite tracks. Search options include by Album, Artist, Genre, Playlist, or entire track list. Jump through lists by first alpha character scrolling.



SNX-771 Double Din Ingenix GPS Navigation Source Unit w/ 7" LCD Touch Screen



Motorized 7" LCD Touch Screen w/ Angle Adjustment
Turn-By-Turn GPS Navigation Powered by TomTom
Accepts Fahrenheit OEM & Steering Wheel Control Module
Bluetooth V2.1+EDR Calling from Enabled Phone
A2DP MP3 Audio Playback from Enabled Device
Complete iPod Integration with Accessory IP-5C
Playback from DVDR/RW or CDR/RW of MP3, MP4, & More
Playback From 32GB SD Card or USB of MP3, MP4, & More
AUX A/V Input for Personal Media Devices
ID3 Tag Reading for Track & Artist Information

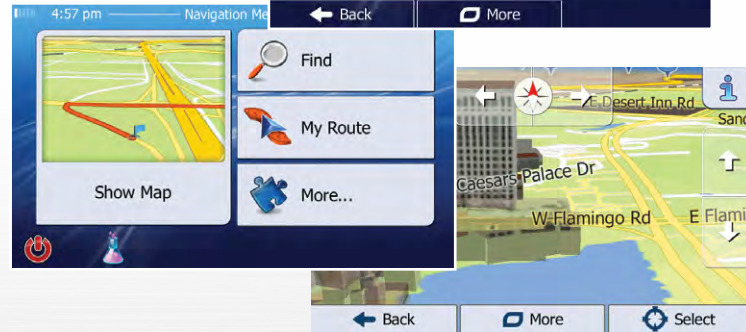
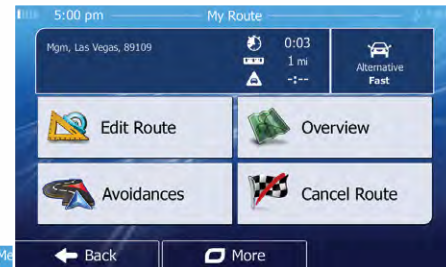
Front, Rear, & Subwoofer 4V Pre-Amp Outputs
Variable Subwoofer Pre-Amp Output
Video Output for Auxiliary Devices
Rear View Camera Input w/ Trigger
7-Band Custom Digital Signal Processor
Multi-Region FM Frequency Stepping
52wx4 MOSFET Speaker Outputs
800x480 Widescreen Resolution
400 NIT LED Backlight Brightness



IP-5C Full Control iPod Cable for INGENIX Powered Source Units

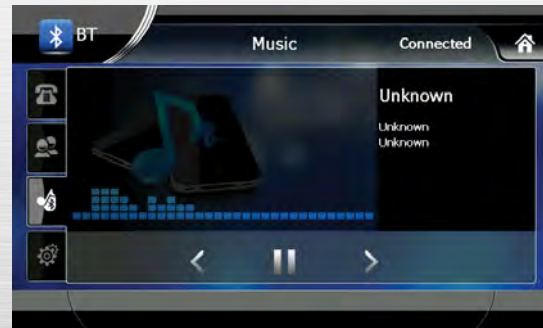
Full Control of iPod Classic, iPhone, Nano, & iTouch
Charging of all Compatible iPod Models
Scroll by Artists, Albums, Genres, or Playlists
Video Playback from Classic & iTouch



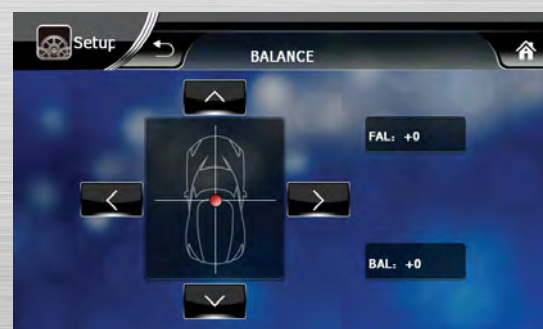


VRN models feature GPS turn-by turn navigation for USA, Canada, & Mexico. Set your destination and follow the commands by text-to-speech directions, including lane guidance. Additional features include favorites list, programmable home destination, destination fuel estimates, multi-lingual, multi-gender voices, speed limit warnings, and more.

Bluetooth V3.0 with Enhanced Data Rate increases traditional data transfer rates to 2.1 Mbit/s. This lightning quick information transfer increases clarity & virtually eliminates unwanted distortion during calls and wireless MP3 audio playback.



Digital Signal Processing features include a digital 10-band equalizer with 14dB boost or cut, custom presets, & factory presets. Additional DSP functions include variable subwoofer level control, reverb optimization, loudness adjustment, & sound staging controls.



VRN-625B 2-DIN GPS Navigation, DVD, CD/MP3, AM/FM Receiver w/ Bluetooth & 6.2" LCD

2-DIN Multimedia Receiver w/ GPS Navigation & 6.2" LCD
 Turn-by-Turn GPS Navigation of USA, Canada, & Mexico
 12 Million Points of Interest Database Included
 Bluetooth V3.0 Hands-Free Calling from Enabled Phone
 A2DP Wireless MP3 Audio Playback from Enabled Device
 Accepts Fahrenheit OEM & Steering Wheel Control Interface
 Advanced FM/AM Tuner with RDBS
 Playback from DVD & CD of MP3 & MP4
 Playback from 64GB SD/USB of MP3 & MP4
 ID3 MP3 Tag Reading for Track & Artist Information
 AUX Audio Input for Personal Media Devices
 10-Band Audio Equalizer w/ User Presets
 Front & Rear Pre-Amp Audio Outputs
 Variable Subwoofer Pre-Amp Output
 Video Output for Auxiliary Devices
 Rear View Camera Input w/ Trigger
 300w 4ch. MOSFET Speaker Outputs
 Custom Backgrounds & Screen Savers
 Multi-Region FM Frequency Stepping
 800x480 Widescreen Resolution
 400NIT LED Backlight



VRN-725B 1-DIN GPS Navigation, DVD, CD/MP3, AM/FM Receiver w/ Bluetooth & 7" LCD

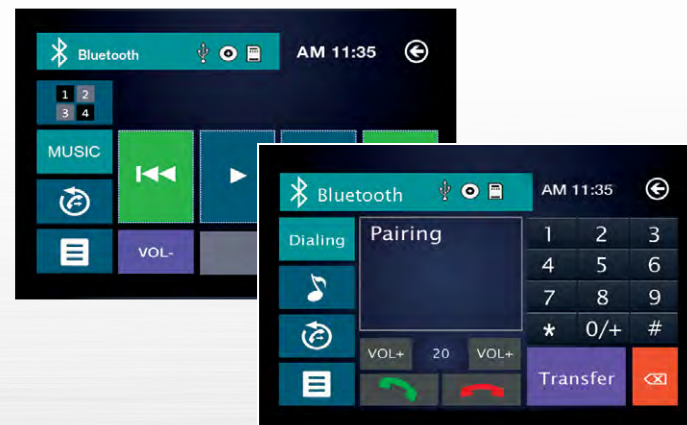
1-DIN Multimedia Receiver w/ GPS Navigation & 7" LCD
 Turn-by-Turn GPS Navigation of USA, Canada, & Mexico
 12 Million Points of Interest Database Included
 Bluetooth V3.0 Hands-Free Calling from Enabled Phone
 A2DP Wireless MP3 Audio Playback from Enabled Device
 Accepts Fahrenheit OEM & Steering Wheel Control Interface
 Advanced FM/AM Tuner with RDBS Receiver
 Playback from DVD & CD of MP3 & MP4
 Playback from 64GB SD/USB of MP3 & MP4
 ID3 MP3 Tag Reading for Track & Artist Information
 AUX Audio Input for Personal Media Devices
 10-Band Audio Equalizer w/ User Presets
 Front & Rear Pre-Amp Audio Outputs
 Variable Subwoofer Pre-Amp Output
 Video Output for Auxiliary Devices
 Rear View Camera Input w/ Trigger
 300w 4ch. MOSFET Speaker Outputs
 Custom Backgrounds & Screen Savers
 Multi-Region FM Frequency Stepping
 800x480 Widescreen Resolution
 400NIT LED Backlight





Hands-Free Calling & Media Playback with Bluetooth V2.0

Safely make and receive hands-free phone calls, scroll contacts lists, and stream MP3's via A2DP from your enabled Smartphone. Most Bluetooth enabled Smartphones seamlessly pair with Mobile 8, without surfing through multiple settings menus or entering random passcodes.



Digital Media Player

Play audio, video, and picture files through Mobile 8 from DVD, CD, or 32GB SD/USB flash drive. Supports MP3 & WAV audio files & MP4 video files, and JPG pictures.



Smart Control

SmartControl enables select Mobile 8 models to communicate with the media player of most smartphones and tablets. SmartControl sends playback commands by the AUX cable connected to the headphone output of your smart device. Control track selection, play/pause, and even answer incoming calls. AUX cable included.



VR-103B

Single DIN Mobile 8 Multimedia Source Unit w/ Detachable 10.3" LCD Touch Screen

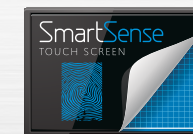
Motorized 10.3" LCD Touchscreen w/ Angle Adjustment
Theft Deterrent Detachable Faceplate w/ Carry Case
Standard & Extended Installation Sleeve & Trim Ring Included
SmartSense Low Glare Anti-Reflection LCD Touch Screen Technology
Accepts Fahrenheit OEM & Steering Wheel Control Interface
Bluetooth V2.0 Hands Free Calling From Enabled Devices
A2DP Wireless MP3 Audio Playback From Enabled Devices
Playback from DVD & CD of MP3 & MP4
Playback from 32GB SD/USB of MP3 & MP4
ID3 MP3 Tag Reading for Track & Artist Information
AUX A/V Input for Personal Media Devices
90° Angle USB & AUX A/V Input Cable Included
Front & Rear Pre-Amp Audio Outputs
Variable Subwoofer Pre-Amp Output
Video Output for Auxiliary Devices
Rear View Camera Input w/ Trigger
52w x 4 MOSFET Speaker Outputs
Custom & Preset Equalizer Settings
Multi-Region FM Frequency Stepping
1,024x600 High Definition Widescreen Resolution
400 NIT Energy Efficient LED Display Backlight



VR-930B

Single DIN Mobile 8 Multimedia Source Unit w/ Detachable 9.3" LCD Touch Screen

Motorized 9.3" LCD Touchscreen w/ Angle Adjustment
Theft Deterrent Detachable Faceplate w/ Carry Case
Standard & Extended Installation Sleeve & Trim Ring Included
SmartSense Low Glare Anti-Reflection LCD Touch Screen Technology
Accepts Fahrenheit OEM & Steering Wheel Control Interface
Bluetooth V2.0 Hands Free Calling From Enabled Devices
A2DP Wireless MP3 Audio Playback From Enabled Devices
Playback from DVD & CD of MP3 & MP4
Playback from 32GB SD/USB of MP3 & MP4
ID3 MP3 Tag Reading for Track & Artist Information
AUX A/V Input for Personal Media Devices
90° Angle USB & AUX A/V Input Cable Included
Front & Rear Pre-Amp Audio Outputs
Variable Subwoofer Pre-Amp Output
Video Output for Auxiliary Devices
Rear View Camera Input w/ Trigger
52w x 4 MOSFET Speaker Outputs
Custom & Preset Equalizer Settings
Multi-Region FM Frequency Stepping
800x480 High Definition Widescreen Resolution
400 NIT Energy Efficient LED Display Backlight



VR-732

VR-732B (w/ Bluetooth V2.0)

Single DIN Mobile 8 Multimedia Source Unit w/ Detachable 7" LCD Touch Screen

Motorized 7" LCD Touch Screen w/ Angle Adjustment
Theft Deterrent Detachable Faceplate w/ Carry Case
Standard & Extended Install Sleeve and Trim Ring Included
Accepts Fahrenheit OEM & Steering Wheel Control Interface
Bluetooth V2.0 Hands Free Calling From Enabled Devices
A2DP Wireless MP3 Audio Playback From Enabled Devices
Smart Control for Mobile Device Integration (732 & 732T only)
Playback from DVD & CD of MP3, & MP4
Playback from 32GB SD/USB of MP3 & MP4
ID3 MP3 Tag Reading for Track & Artist Information
AUX A/V Input for Personal Media Devices
90° Angle USB & AUX A/V Input Cable Included
Front & Rear Pre-Amp Audio Outputs
Variable Subwoofer Pre-Amp Output
Video Output for Auxiliary Devices
Rear View Camera Input w/ Trigger
52w x 4 MOSFET Speaker Outputs
Custom & Preset Equalizer Settings
Multi-Region FM Frequency Stepping
800x480 Widescreen Resolution
400 NIT Energy Efficient LED Display Backlight



VR-651

VR-651B (w/ Bluetooth V2.0)

Double DIN Multimedia Source Unit w/ Motorized 6.5" LCD Touch Screen



2-DIN Multimedia Receiver w/ Motorized 6.5" LCD Touch Screen
 Accepts Farenheit OEM & Steering Wheel Control Interface
 Bluetooth V2.0 Hands Free Calling From Enabled Devices
 A2DP Wireless MP3 Audio Playback From Enabled Devices
 Playback from DVD & CD of MP3 & MP4
 Playback from 32GB SD/USB of MP3 & MP4
 ID3 MP3 Tag Reading for Track & Artist Information
 AUX A/V Input for Personal Media Devices
 Dual Zone for Rear Seat or Overhead Entertainment
 Front & Rear Pre-Amp Audio Outputs
 Fixed 80Hz Subwoofer Output
 Video Output for Auxiliary Devices
 Rear View Camera Input w/ Trigger
 52w x 4 MOSFET Speaker Outputs
 Custom & Preset Equalizer Settings
 Multi-Region FM Frequency Stepping
 480x243 Widescreen Resolution
 400 NIT LED Brightness



VR-650B (w/ Bluetooth V2.0)

Double DIN Multimedia Source Unit w/ Motorized 6.5" LCD Touch Screen

2-DIN Multimedia Receiver w/ Motorized 6.5" LCD Touch Screen
 Accepts Farenheit OEM & Steering Wheel Control Interface
 Bluetooth V2.0 Hands Free Calling From Enabled Devices
 A2DP Wireless MP3 Audio Playback From Enabled Devices
 Playback from DVD & CD of MP3 & MP4
 Playback from 32GB SD/USB of MP3 & MP4
 ID3 MP3 Tag Reading for Track & Artist Information
 AUX A/V Input for Personal Media Devices
 Dual Zone for Rear Seat or Overhead Entertainment
 Front & Rear Pre-Amp Audio Outputs
 Fixed 80Hz Subwoofer Output
 Video Output for Auxiliary Devices
 Rear View Camera Input w/ Trigger
 52w x 4 MOSFET Speaker Outputs
 Custom & Preset Equalizer Settings
 Multi-Region FM Frequency Stepping
 480x243 Widescreen Resolution
 400 NIT LED Brightness



VR-346

VR-346B (w/ Bluetooth V2.0)

2-DIN DVD, CD/MP3, USB/SD, AM/FM Receiver w/ Bluetooth & 3.4" LCD

2-DIN Multimedia Receiver w/ High Definition 3.4" LCD
 Accepts Farenheit OEM & Steering Wheel Control Interface
 Bluetooth V2.0 Hands Free Calling From Enabled Devices
 A2DP Wireless MP3 Audio Playback From Enabled Devices
 Playback from DVD & CD of MP3 & MP4
 Playback from 32GB SD/USB of MP3 & MP4
 ID3 MP3 Tag Reading for Track & Artist Information
 AUX A/V Input for Personal Media Devices
 Front & Rear Pre-Amp Audio Outputs
 Variable Subwoofer Pre-Amp Output
 Video Output for Auxiliary Devices
 300w 4ch. MOSFET Speaker Outputs
 Custom & Preset Equalizer Settings
 Multi-Region FM Frequency Stepping
 480x240 Widescreen Resolution
 400 NIT LED Brightness



VIR-7830

VIR-7830B (w/ Bluetooth V2.0)
Single Din Multimedia Source Unit w/ 7" Flip-Up LCD Touch Screen

1-DIN Multimedia Receiver w/ Motorized 7" LCD Touch Screen
 Theft Deterrent Detachable Faceplate w/ Carry Case
 Accepts Farenheit OEM & Steering Wheel Control Interface
 Bluetooth V2.0 Hands Free Calling From Enabled Devices
 A2DP Wireless MP3 Audio Playback From Enabled Devices
 Playback from DVD & CD of MP3 & MP4
 Playback from 32GB SD/USB of MP3 & MP4
 ID3 MP3 Tag Reading for Track & Artist Information
 AUX A/V Input for Personal Media Devices
 Programable Open or Closed Positioning After Use
 Front & Rear Pre-Amp Audio Outputs
 Fixed 80Hz Subwoofer Output
 Video Output for Auxiliary Devices
 Rear View Camera Input w/ Trigger
 52w x 4 MOSFET Speaker Outputs
 Custom & Preset Equalizer Settings
 Multi-Region FM Frequency Stepping
 800x480 Widescreen Resolution
 400 NIT LED Brightness



VR-730
VR-730B (w/ Bluetooth V2.0)
Single DIN Multimedia Source Unit w/ Detachable 7" LCD Touch Screen

1-DIN Multimedia Receiver w/ 7" LCD Touch Screen
 Theft Deterrent Detachable Faceplate w/ Carry Case
 Standard & Extended Installation Sleeve and Trim Ring Included
 Bluetooth V2.0 Hands Free Calling From Enabled Devices
 A2DP Wireless MP3 Audio Playback From Enabled Devices
 Playback from DVD & CD of MP3 & MP4
 Playback from 32GB SD/USB of MP3 & MP4
 ID3 MP3 Tag Reading for Track & Artist Information
 AUX A/V Input for Personal Media Devices
 Front & Rear Pre-Amp Audio Outputs
 Fixed 80Hz Subwoofer Output
 Video Output for Auxiliary Devices
 Rear View Camera Input w/ Trigger
 52w x 4 MOSFET Speaker Outputs
 Custom & Preset Equalizer Settings
 Multi-Region FM Frequency Stepping
 800x480 Widescreen Resolution
 400 NIT LED Brightness



VR-345
VR-345B (w/ Bluetooth V2.0)
Single DIN A/V Source Unit w/ Detachable 3.4" LCD Screen

1-DIN Multimedia Receiver w/ High Definition 3.4" LCD Display
 Theft Deterrent Detachable Faceplate w/ Carry Case
 Bluetooth V2.0 Hands Free Calling From Enabled Devices
 A2DP Wireless MP3 Audio Playback From Enabled Devices
 Playback from DVD & CD of MP3 & MP4
 Playback from 32GB SD/USB of MP3 & MP4
 MP3 ID3 Tag Reading of MP3 Files
 AUX A/V Input for Personal Media Devices
 Dual Zone for Rear Seat or Overhead Entertainment
 Front & Rear Pre-Amp Audio Outputs
 Video Output for Auxiliary Devices
 Rear View Camera Input w/ Trigger
 52w x 4 MOSFET Speaker Outputs
 Custom & Preset Equalizer Settings
 Multi-Region FM Frequency Stepping
 720x420 High Definition Widescreen Resolution
 400NIT LED Brightness



AFTERMARKET OEM INTEGRATION

OEM in-vehicle technologies have advanced significantly in recent years. As more vehicles land on showroom floors with advanced network systems, the ability to integrate aftermarket source units has become essential. Soundstream is excited to partner with Farenheit and introduce its series of aftermarket OEM integration modules & universal steering wheel control interfaces. Communication, safety, and convenience features that otherwise would be lost are retained while enjoying added aftermarket entertainment. All modules are pre-fitted with Soundstream source unit and vehicle make/model specific wire harnesses, creating plug-n-play installation for all Ingenix, Inteq, Mobile 8, & other multimedia receivers.

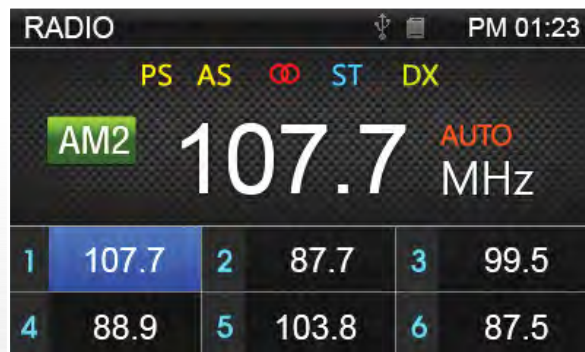


- DRC-1** Universal Steering Wheel Control Interface For Select GM, Chrysler, Ford & Toyota Vehicles
- GM-2** Select 2000-2009 General Motors Vehicles W/ Class 2 Data System
- GM-2DRC** Select 2000-2009 General Motors Vehicles W/ Class 2 Data System & Steering Wheel Control
- GM-2OS** Select 2000-2009 General Motors Vehicles W/ Class 2 Data System & Onstar
- GM-11** Select 2005-2009 General Motors Vehicles W/ Lan 11-Bit Data System
- GM-11OS** Select 2005-2009 General Motors Vehicles W/ Lan 11-Bit Data System & Onstar
- GM-29** Select 2006-2013 General Motors Vehicles W/ Lan 29-Bit Data System
- GM-29OS** Select 2006-2013 General Motors Vehicles W/ Lan 29-Bit Data System & Onstar
- CH-1** Select 2007-2013 Chrysler, Dodge, & Jeep Vehicles W/ Premium Entertainment System
- TOY-1** Select 2004-2011 Toyota & Lexus Vehicles W/ Premium Entertainment System
- VW-1** Select 2002-2013 Volkswagen Vehicles W/ Premium Entertainment System



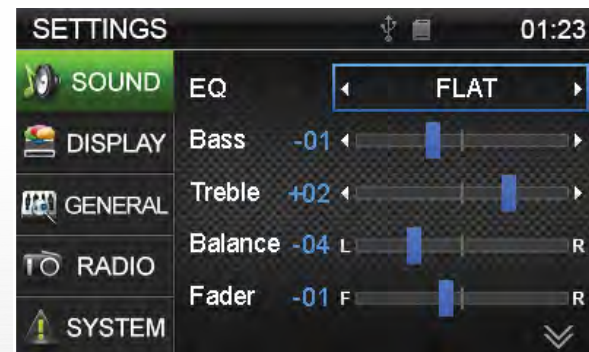
Media Player

Play audio, video, and picture files from a 32GB SD card or USB flash drive. Supports MP3 & WAV audio files; MP4, & AVI video files. Also features a .JPG picture viewer.



Programmable FM/AM Tuner

The FM/AM receiver of all DMRs allow 18FM station memory and 12AM stations. Recall your favorite station with a simple press of a button or knob turn.



Digital Signal Processing

DSP features include a digital 2-band equalizer w/ 7 factory presets, a custom preset, and sound staging controls. Each DMR offers Low Level RCA audio outputs.

SDR-656 SDR-656B (w/ Bluetooth V2.0) **NEW** Double DIN Digital Media Receiver w/ 6.5" LCD Touch Screen



2-DIN Digital Media Receiver w/ 6.5" LCD Touch Screen
Playback from 32GB SD/USB of MP3 & MP4
720p HD Video Playback of MP4, AVI & More
Audio Playback of MP3, AAC, AC3, & WMA
Picture Viewer of JPEG, PNG & GIF
ID3 Tag Reading for Track & Artist Information
AUX A/V Input for Personal Media Devices
18 FM / 12 AM Station Memory
52w x 4 MOSFET Powered Speaker Level Outputs
Front & Rear Pre-Amp Audio Outputs
Fixed 80Hz Subwoofer Output
Custom Audio Staging & EQ Controls
Multi-Region FM/AM Frequency Stepping
400x240 HD Resolution w/ 400cd/m2 Brightness
4" Mounting Depth



SDR-782 SDR-782B (w/ Bluetooth V2.0) **NEW** SDR-782T (w/ Analog TV Tuner) Single DIN Digital Media Receiver w/ 7" LCD Touch Screen

1-DIN Digital Media Receiver w/ Motorized 7" LCD Touch Screen
Theft Deterrent Detachable Faceplate w/ Protective Carry Case
Accepts Fahrenheit OEM & Steering Wheel Control Interface
Playback from 32GB SD/USB of MP3, MP4, & DivX
720p HD Video Playback of MP4, AVI & More
Audio Playback of MP3, AAC, AC3, & WMA
Picture Viewer of JPEG, PNG & GIF
ID3 Tag Reading for Track & Artist Information
AUX Audio Input for Personal Media Devices
18 FM / 12 AM Station Memory
52w x 4 MOSFET Powered Speaker Level Outputs
Front & Rear Pre-Amp Audio Outputs
Fixed 80Hz Subwoofer Output
Video Output for Auxiliary Devices (SDR-782T only)
Rear View Camera Input w/ Trigger (SDR-782T only)
Custom Audio Staging & EQ Controls
Multi-Region FM/AM Frequency Stepping
800x480 HD Resolution w/ 400cd/m2 Brightness
4" Mounting Depth



SDR-762 SDR-762T (w/ Analog TV Tuner) Single DIN Digital Media Receiver w/ Detachable 7" LCD Touch Screen

1-DIN Digital Media Receiver w/ 7" LCD Touch Screen
Theft Deterrent Detachable Faceplate w/ Carry Case
Playback from 32GB SD/USB of MP3, MP4, & DivX
720p HD Video Playback of MP4, AVI & More
Audio Playback of MP3, AAC, AC3, & WMA
Picture Viewer of JPEG, PNG & GIF
ID3 Tag Reading for Track & Artist Information
AUX Audio Input for Personal Media Devices
18 FM / 12 AM Station Memory
52w x 4 MOSFET Powered Speaker Level Outputs
1 Set of Low-Level RCA Audio Outputs
Video Output for Auxiliary Devices (SDR-762T only)
Rear View Camera Input w/ Trigger (SDR-762T only)
Custom Audio Staging & EQ Controls
Multi-Region FM/AM Frequency Stepping
800x480 HD Resolution w/ 400cd/m2 Brightness
4" Mounting Depth



SDR-342 SDR-342B (w/ Bluetooth V2.0) SDR-342T (w/ Analog TV Tuner) Single DIN Digital Media Receiver w/ Detachable 3.4" LCD Screen

Theft Deterrent Detachable Flip-Down Front Faceplate
Playback from up to 32GB SD/USB of 720P MP4, AVI, & more
Audio Playback of MP3, AAC, AC3, & WMA
Picture Viewer of JPEG, PNG & GIF
ID3 Tag Reading for Track & Artist Information
AUX Audio Input for Personal Media Devices
18 FM / 12 AM Station Memory
52w x 4 MOSFET Powered Speaker Level Outputs
1 Set of Low-Level RCA Audio Outputs
Video Output for Auxiliary Devices (SDR-342T only)
Rear View Camera Input w/ Trigger (SDR-342T only)
Custom Audio Staging & EQ Controls
Multi-Region FM/AM Frequency Stepping
720x420 HD Resolution w/ 400cd/m2 Brightness
4" Mounting Depth



VCD-32

VCD-32B (w/ Bluetooth V2.0)

Double DIN CD/MP3, AM/FM Receiver w/ 32GB USB Playback

CD/MP3, AM/FM & USB Receiver
 Bluetooth V2.0 Hands Free Calling from Enabled Phone
 A2DP MP3 Audio Playback from Enabled Device
 Playback from 32GB USB of MP3 & WMA
 Playback from CD, CDR, CDRW of MP3 & WMA
 AUX Audio Input for Personal Media Devices
 Front & Rear Pre-Amp Output
 52w x 4 MOSFET Speaker Outputs
 Custom & Pre-Set Equalizer Settings
 Audio Staging Controls
 12/24 Hour Digital Clock
 Remote Control Included



VCD-31

VCD-31B (w/ Bluetooth V2.0)

Single DIN CD Player w/32GB USB Playback

CD/MP3, AM/FM & USB Receiver
 Theft Deterrent Detachable Faceplate
 Bluetooth V2.0 Hands Free Calling from Enabled Phone
 A2DP MP3 Audio Playback from Enabled Device
 Playback from 32GB USB of MP3 & WMA
 Playback from CD, CDR, CDRW of MP3 & WMA
 AUX Audio Input for Personal Media Devices
 Front & Rear Pre-Amp Output
 52w x 4 MOSFET Speaker Outputs
 Custom & Pre-Set Equalizer Settings
 Audio Staging Controls
 12/24 Hour Digital Clock
 Remote Control Included
 Faceplate Carry Case Included



VL-12B (w/ Bluetooth V2.0)

Single DIN Digital Media Receiver w/ 32GB SD/USB Playback & AM/FM Receiver

Detachable Theft Deterrent Front Panel Faceplate
 Bluetooth V2.0 Hands Free Calling from Enabled Phone
 A2DP MP3 Audio Playback from Enabled Device
 Playback from 32GB SD & USB of MP3, WAV, WMA
 Front Panel 3.5mm AUX Audio Input
 2-Channel 2V Pre-Amp RCA Audio Outputs
 52w x 4 MOSFET Powered Speaker Level Outputs
 18FM/12AM Station Memory
 Custom & Preset EQ Settings
 Audio Staging Controls
 Remote Control Included



VL-11A

Single DIN Mechless Source Unit w/ AM/FM & SD/USB Playback

Detachable Theft Deterrent Front Panel Faceplate
 Playback from 32GB SD & USB of MP3, WAV, WMA
 Front Panel 3.5mm AUX Audio Input
 2-Channel 2V Pre-Amp RCA Audio Outputs
 52x4 MOSFET Powered Speaker Level Outputs
 18FM/12AM Station Memory
 Custom & Preset EQ Settings
 Audio Staging Controls
 Remote Control Included



VDVD-165

Single Din DVD Player w/ 32GB USB Playback

Playback from DVDR/RW of MP4
 Playback from 32GB USB of MP4
 In-Dash, Floor, & Vertical Mounting Brackets Included
 DIN Size Trim Ring For In-Dash Mounting Included
 Flash Memory for Last Position Recall
 Remote Control & IR Repeater Included
 OSD On Screen Display
 Digital Anti-shock
 A/V Pre-amp Outputs, 2V
 Dimensions: 6.4" x 6.2" x 2"



VCM-103DAC

Ceiling Mount DVD Entertainment System w/ High Resolution 10.3" LCD & AirCast

Wirelessly Stream Video & Content From Your Smart Device
 Compatible w/ DLNA, Miracast, AirPlay, and AllShare Devices
 10.3" High Resolution LCD Screen
 1,024 x 600 16:9 Widescreen Resolution
 Interchangeable Color Skins (beige, black, grey)
 Automotive-Spec DVD Transport for Extreme Conditions
 Playback from DVDR/RW of 1080p MP4 & AVI
 Playback from 32GB SD/MMC or USB of 1080p MP4 & AVI
 RCA A/V Input from Auxiliary Sources
 Rear Panel RCA A/V Input from Game Console
 Pre-Amp Audio Outputs
 Single Channel Wireless IR Transmitter (use VHP-10 or VHP-11)
 330 Ch. FM Stereo Transmitter for OEM Integration
 Full Function Remote Control Included
 NTSC / PAL Auto Selection
 400 NIT Screen Brightness
 Dimensions: 13" w x 11" d x 2.5" h

NEW

AIRCAST



VCM-103DMH

Ceiling Mount DVD Entertainment System w/ High Resolution 10.3" LCD & MobileLink Input

VCM-103DM

Ceiling Mount DVD Entertainment System w/ High Resolution 10.3" LCD

MobileLink Input for Smart Device Connectivity
 10.3" High Resolution LCD Screen
 1,024 x 600 16:9 Widescreen Resolution
 Interchangeable Color Skins (beige, black, grey)
 Automotive-Spec DVD Transport for Extreme Conditions
 Playback from DVDR/RW of 1080p MP4 & AVI
 Playback from 32GB SD/MMC or USB of 1080p MP4 & AVI
 RCA A/V Input from Auxiliary Sources
 Rear Panel RCA A/V Input from Game Console
 Pre-Amp Audio Outputs
 Single Channel Wireless IR Transmitter (use VHP-10 or VHP-11)
 330 Ch. FM Stereo Transmitter for OEM Integration
 Full Function Remote Control Included
 NTSC / PAL Auto Selection
 400 NIT Screen Brightness
 Dimensions: 13" w x 11" d x 2.5" h



MobileLink Interface Cables

HDM-i4 - iPhone4, iPhone4S, iPad2, & iPad3

HDM-A2 - Galaxy 2 & Select 5-Pin Android Devices

HDM-A3 - Galaxy 3, 4, & Select 11-PIN Android Devices

5ft interface cable unlocks 1080p video and audio playback from enabled mobile devices. Each interface cable features the appropriate micro connector for your mobile device. Soundstream MobileLink Interface cables also charge your mobile device. Available for select iOS and Android devices.



VCM-143DMH

Ceiling Mount DVD Entertainment System w/ High Definition 14.3" LCD & MobileLink Input

Interchangeable Color Skins (beige, black, grey)
 Car-Spec DVD Drive for Extreme Temperature Exposure
 MobileLink Input for Smart Device Connectivity
 Playback from DVDR/RW of 720p MP4
 Playback from 32GB SD Card or USB of 720p MP4
 Flash Memory for Last Position Recall
 Single Channel Wireless IR Transmitter (use VHP-10, VHP-11)
 8-ch FM Stereo Transmitter for OEM Integration
 RCA A/V Input for Auxiliary Sources
 RCA A/V Output for Multiple Component Integration
 Triggered Bright White LED Dome Light
 NTSC / PAL Auto Selection
 1,366 x 768 16:9 Widescreen Resolution
 400 NIT Screen Brightness
 Dimensions: 12.75" w x 7.5" d x 2" h



VCM-11DXX

Ceiling Mount DVD Entertainment System w/ 11.2" LCD

Interchangeable Color Skins (beige, black, grey)
 Color Matched Trim Rings for Sculptured Ceilings Included
 45°/45° Swivel Screen for Angled Viewing
 Car-Spec DVS DVD Drive for Extreme Temperature Exposure
 Playback from DVDR/RW of 720p MP4
 Playback from 32GB SD Card or USB of 720p MP4
 Flash Memory for Last Position Recall
 Single Channel Wireless IR Transmitter (use VHP-10, VHP-11)
 8-ch FM Stereo Transmitter for OEM Integration
 A/V Input for Auxiliary Sources
 Rear Panel RCA A/V Input for Game Console
 A/V Output for Multiple Component Integration
 Rear Panel Play/Pause Control
 Triggered Bright White LED Dome Light
 Full Function Remote Control Included
 NTSC / PAL Auto Selection
 800 x 480 16:9 Widescreen Resolution
 400 NIT Screen Brightness
 Dimensions: 14" w x 12.5" d x 2.5" h



VCM-112

Ceiling Mount 11.2" LCD Monitor

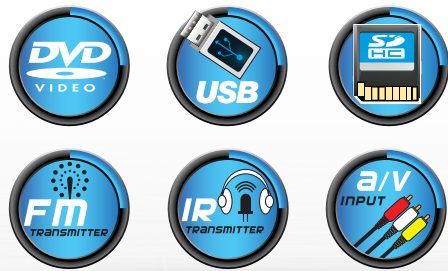
Interchangeable Color Skins (beige, black, grey)
 Color Matched Trim Rings for Sculptured Ceilings Included
 90°/90° Swivel Screen for Angled Viewing
 Single Channel Wireless IR Transmitter (use VHP-10, VHP-11)
 A/V Input for Auxiliary Sources
 Triggered Bright White LED Dome Light
 NTSC / PAL Auto Selection
 800 x 480 16:9 Widescreen Resolution
 400 NIT Screen Brightness
 Dimensions: 14.5" w x 12.5" d x 2.5" h



VHD-90AC Universal Replacement Headrest Pre-Loaded w/ DVD Player, 9" LCD Screen & AirCast

Wirelessly Stream Video & Content From Your Smart Device
Compatible w/ DLNA, Miracast, AirPlay, and AllShare Devices
Playback from DVDR/RW of 720p MP4
Playback from 32GB SD Card or USB of 720p MP4
Dual Channel Wireless IR Transmitter (use VHP-12)
FM Stereo Transmitter for OEM Integration
AUX A/V Input for Game Console or Personal Media Devices
RCA A/V Input for Auxiliary Source or Opposite Headrest
RCA A/V Output to Auxiliary Source or Opposite Headrest
Forward/Backwards Tilting Headrest
3 Changeable Color Skins Included (grey, beige, black)
Hardwired Headphone Output
3/8" Locking Pole w/ 1/2" & 9/16" Adapters
4.75" - 8.25" Pole Width Adjustment
NTSC / PAL Auto Selection
800 x 480 16:9 Widescreen Resolution
400 NIT Screen Brightness
Dimensions: 11.5" w x 8.5" h x 6" d

NEW



SHDM-103 1080P Digital Media Headrest Preloaded w/ 10.3" LCD & MobileLink Input

MobileLink Input for Smart Device Connectivity
10.3" High Resolution LCD Screen
1,024 x 600 16:9 Widescreen Resolution
Forward / Backwards Tilting Headrest
3 Changeable Color Skins Included (grey, beige, black)
32GB USB Readers for 1080p MP4, & AVI Playback
Dual Channel Wireless IR Transmitter (use VHP-12)
FM Stereo Transmitter for OEM Integration
2 RCA A/V Input for Auxiliary Source
RCA Audio Outputs
Hardwired Headphone Output
Full Function Remote Control Included
3/8" Locking Pole w/ 1/2" & 9/16" Adapters
4.75" - 8.25" Pole Width Adjustment
NTSC / PAL Auto Selection
Dimensions: 11.75" w x 8.25" h x 4.75" d



GRIP-H Headrest Mounting Bracket for Mobile Devices



MobileLink Interface Cables
HDM-i4 - iPhone4, iPhone4S, iPad2, & iPad3
HDM-A2 - Galaxy 2 & Select 5-Pin Android Devices
HDM-A3 - Galaxy 3, 4, & Select 11-PIN Android Devices



5ft interface cable unlocks 1080p video and audio playback from enabled mobile devices. Each interface cable features the appropriate micro connector for your mobile device. Soundstream MobileLink Interface cables also charge your mobile device. Available for select iOS and Android devices.



HEADRESTS

VHD-90HD

Universal Replacement Headrest Pre-Loaded w/ DVD Player, 9" LCD Screen, & MobileLink Input

VH-90HD

Universal Replacement Headrest Pre-Loaded w/ 9" LCD & MobileLink Input

- MobileLink Input for Smart Device Mirroring
- View All Content from Enabled Smart Devices
- Playback from DVDR/RW of 720p MP4 (VHD-90HD only)
- Playback from 32GB SD Card or USB of MP4 (VHD-90HD only)
- Dual Channel Wireless IR Transmitter (use VHP-12)
- FM Stereo Transmitter for OEM Integration (VHD-90HD only)
- AUX A/V Input for Game Console or Personal Media Devices
- RCA A/V Input for Auxiliary Source or Opposite Headrest
- RCA A/V Output to Auxiliary Source or Opposite Headrest
- Hardwired Headphone Output
- 3 Changeable Color Skins Included (grey, beige, black)
- 3/8" Locking Pole w/ 1/2" & 9/16" Adapters
- 4.75" ~ 8.25" Pole Width Adjustment
- NTSC / PAL Auto Selection
- 800 x 480 16:9 Widescreen Resolution
- 400 NIT Screen Brightness
- Dimensions: 11.5" w x 8.5" h x 6" d

NEW



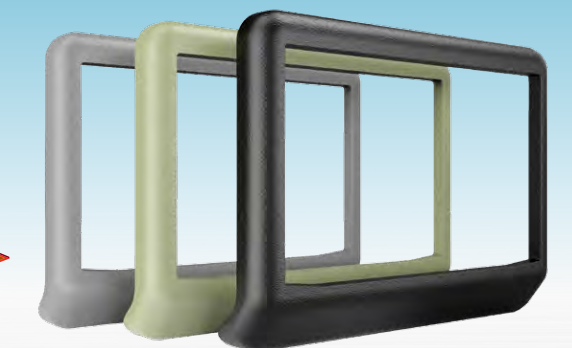
HEADREST MONITORS

SHAD-9H

Universal Headrest Mount DVD Player w/ 9" LCD & MobileLink Input



MHL NEW



- Bracket Mount DVD Player Solution for Vehicles w/ Active Headrest
- Front Loading DVD Player for DVD/RW 720P Playback
- 32GB USB & SD Card Readers for MP4 Playback
- Dual Channel Wireless IR Transmitter (Use HP-12S)
- FM Stereo Transmitter for Easy OEM Integration
- AUX A/V Input for Game Console or Personal Media Devices
- RCA A/V Input for Auxiliary Source or Opposite Headrest
- RCA A/V Output to Auxiliary Source or Opposite Headrest
- 3.5mm Hardwired Headphone Output Jack
- 3 Changeable Colors Skins Included (grey, beige, & black)
- 4.75"-8.25" Pole Width Adjustment
- Various Pole Diameter Adapters Included
- NTSC / PAL Auto Selection
- 800 x 480 16:9 Widescreen Resolution
- 400 NIT Screen Brightness



MobileLink Interface Cables

- HDM-i4** ~ iPhone4, iPhone4S, iPad2, & iPad3
- HDM-A2** ~ Galaxy 2 & Select 5-Pin Android Devices
- HDM-A3** ~ Galaxy 3, 4, & Select 11-PIN Android Devices

5ft interface cable unlocks 1080p video and audio playback from enabled mobile devices. Each interface cable features the appropriate micro connector for your mobile device. Soundstream MobileLink Interface cables also charge your mobile device. Available for select iOS and Android devices.



AirCast Wireless MobileLink MHL Receiver

Wirelessly Stream Video & Content From Your Smart Device
Compatible w/ DLNA, Miracast, and AllShare Smart Devices
Connect to any Headrest, Overhead, or Source Unit w/ Mobile Link Input
Streams Full 1080P Video, including MP4, AVI, WMV, MKV, MOV, & More
Universal Application w/ Most LCD TVs at Home or Office.



VHD-90CC

Universal Replacement Headrest Pre-Loaded w/ DVD Player & 9" LCD Screen

Playback from DVDR/RW of 720p MP4
 Playback from 32GB SD Card or USB of 720p MP4
 Dual Channel Wireless IR Transmitter (use VHP-12)
 FM Stereo Transmitter for OEM Integration
 AUX A/V Input for Game Console or Personal Media Devices
 RCA A/V Input for Auxiliary Source or Opposite Headrest
 RCA A/V Output to Auxiliary Source or Opposite Headrest
 Hardwired Headphone Output
 3 Changeable Color Skins Included (grey, beige, black)
 3/8" Locking Pole w/ 1/2" & 9/16" Adapters
 4.75" - 8.25" Pole Width Adjustment
 NTSC / PAL Auto Selection
 800 x 480 16:9 Widescreen Resolution
 400 NIT Screen Brightness
 Dimensions: 11.5"w x 8.5"h x 6"d



VH-90CC

Universal Replacement Headrest Pre-Loaded w/ 9" LCD

Dual Channel Wireless IR Transmitter (use VHP-12)
 AUX A/V Input for Game Console or Personal Media Devices
 RCA A/V Input for Auxiliary Source or Opposite Headrest
 RCA A/V Output to Auxiliary Source or Opposite Headrest
 Hardwired Headphone Output
 3 Changeable Color Skins Included (grey, beige, black)
 3/8" Locking Pole w/ 1/2" & 9/16" Adapters
 4.75" - 8.25" Pole Width Adjustment
 NTSC / PAL Auto Selection
 800 x 480 16:9 Widescreen Resolution
 400 NIT Screen Brightness
 Dimensions: 11.5"w x 8.5"h x 6"d



VHD-70CC

Universal Replacement Headrest Pre-Loaded w/ DVD Player & 7" LCD Screen

Playback from DVDR/RW of 720p MP4
 Playback from 32GB SD Card or USB of 720p MP4
 Dual Channel Wireless IR Transmitter (use VHP-12)
 FM Stereo Transmitter for OEM Integration
 AUX A/V Input for Game Console or Personal Media Devices
 RCA A/V Input for Auxiliary Source or Opposite Headrest
 RCA A/V Output to Auxiliary Source or Opposite Headrest
 Hardwired Headphone Output
 3 Changeable Color Skins Included (grey, beige, black)
 3/8" Locking Pole w/ 1/2" & 9/16" Adapters
 4.75" - 8.25" Pole Width Adjustment
 NTSC / PAL Auto Selection
 800 x 480 16:9 Widescreen Resolution
 400 NIT Screen Brightness
 Dimensions: 10"w x 7"h x 5.50"d



VH-70CC

Universal Replacement Headrest Pre-Loaded w/ 7" LCD

Dual Channel Wireless IR Transmitter (use VHP-12)
 AUX A/V Input for Game Console or Personal Media Devices
 RCA A/V Input for Auxiliary Source or Opposite Headrest
 RCA A/V Output to Auxiliary Source or Opposite Headrest
 Hardwired Headphone Output
 3 Changeable Color Skins Included (grey, beige, black)
 3/8" Locking Pole w/ 1/2" & 9/16" Adapters
 4.75" - 8.25" Pole Width Adjustment
 NTSC / PAL Auto Selection
 800 x 480 16:9 Widescreen Resolution
 400 NIT Screen Brightness
 Dimensions: 10"w x 7"h x 5.50"d



VHR-72IRA

7" Dual Channel IR Headrest Monitor

Two Auxiliary A/V Input
 Dual Channel IR Transmitter (use VHP-12)
 Wired Headphone Output
 Low Reflection TFT-LCD Monitor
 Ultra Bright LED Backlighting
 Selectable Aspect Modes
 Preset/Manual Image Control
 Dimmer Control
 Remote Control Included
 NTSC/PAL Selection
 480 x 234 (16:9) Image Resolution
 Cutout Dimensions: 7"w x 4.75"h x .75"d



HEADPHONES

VHP-10 Single 1ch. IR Wireless Headphone

EVA hard carrying case included
Foldable Ear Pads for Compact Storage
On/Off Switch Saves Battery Life
Auto Power Off Function

Auto Mute Function
Variable Volume Control
ALC Auto Level Control



VHP-11 Single 1ch. IR Wireless Headphone

VHP-12 Single 2ch. IR Wireless Headphone

Adjustable Headphone Straps
Channel Selectable From Each Headphone
Ear Pads Fold Flat for Seat Pocket Storage
EVA hard Carry Case Included
MP-3 Player Input Via 3.5mm Jack

On/Off Switch Saves Battery Life
Auto Power Off Function
Auto Mute Function
Variable Volume Control
ALC Auto Level Control



VHP-22 Pair 1ch. IR Wireless Headphones with Transmitter

Stereo Audio IR Transmitter
Adjustable Headphone Straps
Ear Pads Fold Flat for Seat Pocket Storage
EVA hard Carry Case Included
MP-3 Player Input Via 3.5mm Jack
On/Off Switch Saves Battery Life

Auto Power Off Function
Auto Mute Function
Variable Volume Control
ALC Auto Level Control



VHP-900 Single 2ch. RF 900MHz Wireless Headphone

VHP-9002 Pair 2ch. RF 900MHz Wireless Headphones with Transmitter

Dual Stereo Audio Inputs
Channel Selectable From Each Headphone
100ft. Operational Distance
Adjustable Headphone Straps
Ear Pads Fold Flat for Seat Pocket Storage
EVA hard Carry Case Included

MP-3 Player Input Via 3.5mm Jack
On/Off Switch Saves Battery Life
Auto Power Off Function
Auto Mute Function
Variable Volume Control
ALC Auto Level Control



WINDOW FILM TINT

Soundstream window tint film uses impregnated color chips and twin UV inhibitors in the initial manufacturing process. This insures maximum benefit for your interior. Traditional manufacturing process uses clear chips and adds dyes, pigments, or spray-on colors, and a UV inhibitor in the adhesive. Soundstream Window Tint is built to last and protect...

Additional Benefits

Color-stable film that never bubbles, peels, or turns purple over time
Malleable for seamless attachment to curved surfaces
American made adhesives for impervious seal and undistorted views
Reduces heat, glare and overall energy costs when used in home or auto
Eliminate harmful UV by 99% to protect interior materials in home or auto
Lifetime Warranty with Everlast Series, Made in U.S.A.
4-Year Prorated Warranty with Elite Series
Available in 20", 24", 36", 40" Width, all in 100ft. length
Everlast Series Available in 60" Width

Everlast Series

EV-05 6% VLT
EV-15 16% VLT
EV-20 21% VLT
EV-35 35% VLT
EV-50 51% VLT

Elite Series

LT-05 6% VLT
LT-20 22% VLT
LT-35 33% VLT
LT-50 51% VLT



REAR VIEW CAMERAS

VL-3CSB

License Plate Frame w/ Night Vision Camera, Back-Up Sensors, On-Screen Distance Gauge, & Proximity Alert

U.S. Patent #7,106,183 B2
2 Object Sensors w/ Proximity Alert
1/4" CCD Color Camera
0.5 LUX Low Light Lens
Waterproof Camera Housing
Waterproof External Wire Connections
Vertically Pivoting Camera Housing
7' Effective Viewing Distance

Inconspicuous Speaker for Alerts
8 IR LEDs for Night Viewing
On-Screen Distance Gauge
130° Capture Angle
RCA Video Output
Cast Steel Alloy Frame
Reversed Image
640 x 480 Resolution



VLP2-CSB

License Plate Frame w/ Night Vision Camera, Back-Up Sensors, On-Screen Distance Gauge, & Proximity Alerts

U.S. Patent #7,106,183 B2
3 Object Sensors w/ Proximity Alert
1/4" CCD Color Camera
0.5 LUX Low Light Lens
Waterproof Camera Housing
Waterproof External Wire Connections
Vertically Pivoting Camera Housing
7' Effective Viewing Distance
Inconspicuous Speaker for Alerts
8 IR LEDs for Night Viewing
On-Screen Distance Gauge
130° Capture Angle
RCA Video Output
Cast Steel Alloy Frame
Reversed Image
640 x 480 Resolution



VLP-1CA

Chrome License Plate Frame with Camera

Chrome Finish on ABS License Plate Frame
Vertically Pivoting Camera Housing
On-Screen Distance Gauge
1/4" CCD Wide View Color Camera
0.1 LUX Low Light Lens
160° Capture Angle
RCA Video Output
Reversed Image
648 x 488 Resolution



VCCD-4XS

1" Surface Mount Rear View Camera

Vertically Pivoting Mounting Bracket
Waterproof External Wire Connections
On-Screen Distance Gauge
1/4" CCD Color Camera
0.1 Lux Low Light Lens
160° Capture Angle
RCA Video Outputs
Reversed Image
648 x 488 Resolution



VVB-2

One In & Five Output Video Signal Booster

Five Individual Output Trimmer Gain Controls
Shielded Metal Housing For Noise Rejection
Video Output Gain Control



2-WAY LCD SYSTEMS

ARS.3 TWO-WAY LCD 4 CHANNEL ALARM REMOTE START SYSTEM

- One RM4 2-Way LCD Transmitter
- One RM3L Code Hoping Transmitter
- Window Mount Spider LED/Valet Long Range Antenna
- 1500 Feet Range
- 2nd Car Operation
- Remote Panic & Car Finder Features
- On-Board Relays, Parking Lights Starter, Accessory, Ignition 1&2
- Remote Lock / Unlock Entry
- 6-Tone Siren
- 2-Stage Plug-in Shock Sensor
- Starter Disable Control
- Passive Arming Settings
- Trunk Release Control
- Drivers Door Priority Unlock Control
- Ignition Door Lock Control
- Pathway Illumination
- Pit Stop Feature
- Built-In Temperature Sensor
- Cold Start 1,2,3 or 4 Hour Timer Mode
- Valet Secure Service Mode
- Factory Security Arm & Disarm
- Factory Horn Control
- Diesel Engine Compatible
- Hybrid Vehicle Compatible
- Dual Data Ports for By-pass Module Integration
- 4/15/45 Minute Runtime
- Instant Start Control Trigger Input
- Extended Runtime Feature
- Turbo Timer Mode Feature



ARS.2 TWO-WAY LCD 4 CHANNEL ALARM REMOTE START SYSTEM

- One RM4 2-Way LCD Transmitter
- One RM3L Code Hoping Transmitter
- Window Mount Spider LED/Valet Long Range Antenna
- 1500 Feet Range
- 2nd Car Operation
- Remote Panic & Car Finder Features
- On-Board Relays, Parking Lights Starter, Accessory, Ignition 1&2
- Remote Lock / Unlock Entry
- 6-Tone Siren
- 2-Stage Plug-in Shock Sensor
- Starter Disable Control
- Passive Arming Settings
- Trunk Release Control
- Drivers Door Priority Unlock Control
- Ignition Door Lock Control
- Pathway Illumination
- Pit Stop Feature
- Built-In Temperature Sensor
- Cold Start 1,2,3 or 4 Hour Timer Mode
- Valet Secure Service Mode
- Factory Security Arm & Disarm
- Factory Horn Control
- Diesel Engine Compatible
- Hybrid Vehicle Compatible
- Dual Data Ports for By-pass Module Integration
- 4/15/45 Minute Runtime
- Instant Start Control Trigger Input
- Extended Runtime Feature
- Turbo Timer Mode Feature



ARS.1 4 CHANNEL ALARM REMOTE START SYSTEM

- Two RM3L Code Hoping Transmitters
- Window Mount Spider LED/Valet Long Range Antenna
- 1500 Feet Range
- 2nd Car Operation
- Remote Panic & Car Finder Features
- On-Board Relays, Parking Lights Starter, Accessory, Ignition 1&2
- Remote Lock / Unlock Entry
- 6-Tone Siren
- 2-Stage Plug-in Shock Sensor
- Starter Disable Control
- Passive Arming Settings
- Trunk Release Control
- Drivers Door Priority Unlock Control
- Ignition Door Lock Control
- Pathway Illumination
- Pit Stop Feature
- Cold Start 1,2,3 or 4 Hour Timer Mode
- Valet Secure Service Mode
- Factory Security Arm & Disarm
- Factory Horn Control
- Diesel Engine Compatible
- Hybrid Vehicle Compatible
- Dual Data Ports for By-pass Module
- 4/15/45 Minute Runtime
- Instant Start Control Trigger Input
- Extended Runtime Feature
- Turbo Timer Mode Feature



REMOTE STARTS

RS.3 DELUXE REMOTE START W/ KEYLESS ENTRY

- Two RM3L Metal Transmitters
- Window Mount Spider LED/Valet Long Range Antenna
- 1500 Feet Range
- 2nd Car Operation
- Remote Panic & Car Finder Features
- On-Board Relays, Parking Lights Starter, Accessory, Ignition 1&2
- Remote Lock / Unlock Entry
- Trunk Release Control
- Drivers Door Priority Unlock Control
- Ignition Door Lock Control
- 2 Auxiliary Channel Output
- Pathway Illumination
- Pit Stop Feature
- Cold Start 1,2,3 or 4 Hour Timer Mode
- Valet Secure Service Mode
- Factory Security Arm & Disarm
- Factory Horn Control
- Diesel Engine Compatible
- Hybrid Vehicle Compatible
- Dual Data Ports for By-pass Module Integration
- 4/15/45 Minute Runtime
- Instant Start Control Trigger Input
- Extended Runtime Feature
- Turbo Timer Mode Feature



RS.2 REMOTE START W/ KEYLESS ENTRY

- Two RM2 Code Hoping Transmitters
- Window Mount Spider LED/Valet Long Range Antenna
- 1000 Feet Range
- 2nd Car Operation
- Remote Panic & Car Finder Features
- On-Board Relays include, Parking Lights Starter, Accessory, Ignition 1&2
- Remote Lock / Unlock Entry
- Trunk Release Control
- Ignition Door Lock Control
- 1 Auxiliary Channel Output
- Pathway Illumination
- Pit Stop Feature
- Cold Start 1,2,3 or 4 Hour Timer Mode
- Valet Secure Service Mode
- Factory Security Arm & Disarm Control
- Factory Horn Control
- Diesel Engine Compatible
- Hybrid Vehicle Compatible
- Dual Data Ports for By-pass Module Integration
- 4/15/45 Minute Runtime
- Instant Start Control Trigger Input
- Extended Runtime Feature
- Turbo Timer Mode Feature



RS.1 TWO BUTTON REMOTE START

- Two RM1 Two Button Transmitters
- Window Mount Spider LED/Valet Long Range Antenna
- 1000 Feet Range
- On-Board Relays include, Parking Lights Starter, Accessory, Ignition 1&2
- Remote Lock / Unlock Entry
- Ignition Door Lock Control
- Pit Stop Feature
- Cold Start 2 or 3 Hour Timer Mode
- Valet Secure Service Mode
- Factory Security Arm & Disarm Control
- Factory Horn Control
- Diesel Engine Compatible
- Dual Data Ports for By-pass Module Integration
- 4/15/45 Minute Runtime



ALARMS REMOTE STARTS

AL.3

TWO-WAY LCD DELUXE 5 CHANNEL SECURITY SYSTEM W/ KEYLESS ENTRY & BUILT-IN STARTER DISABLE RELAY

- One RM4 2-Way LCD Transmitter
- One RM3L Code Hoping Transmitter
- Window Mount Spider LED/Valet Long Range Antenna
- 800 Feet Range
- 2nd Car Operation
- Remote Panic & Car Finder Features
- 2-Stage Shock Sensor
- Trunk Release Control (relay on-board)
- 3 Auxiliary Channel Outputs
- Dome Light Control
- Drivers Door Priority Unlock Control
- 6-Tone Siren
- Factory Horn Control
- Pathway Illumination Feature
- Anti-Car Jacking Feature
- Starter Disable Control (relay on-board)
- Passive Arming Settings
- Ignition Door Lock Control



AL.2

DELUXE 5 CHANNEL SECURITY SYSTEM W/ KEYLESS ENTRY & BUILT-IN STARTER DISABLE RELAY

- Two RM3 Metal Transmitters
- Window Mount Spider LED/Valet Long Range Antenna
- 800 Feet Range
- 2nd Car Operation
- Remote Panic & Car Finder Features
- 2-Stage Shock Sensor
- Trunk Release Control (relay on-board)
- 3 Auxiliary Channel Outputs
- Dome Light Control
- Drivers Door Priority Unlock Control
- 6-Tone Siren
- Factory Horn Control
- Pathway Illumination Feature
- Anti-Car Jacking Feature
- Starter Disable Control (relay on-board)
- Passive Arming Settings
- Ignition Door Lock Control



AL.1

3 CHANNEL SECURITY SYSTEM W/ KEYLESS ENTRY & BUILT-IN SHOCK SENSOR

- Two RM2 Code Hoping Transmitters
- 2nd Car Operation
- Remote Panic & Car Finder Features
- 2-Stage Built-in Shock Sensor, Adjustable via Remote Transmitter
- Trunk Release Control
- 1 Auxiliary Channel Output
- Dome Light Control
- Drivers Door Priority Unlock Control
- 6-Tone Siren
- Pathway Illumination Feature
- Anti-Car Jacking Feature
- Starter Disable Control
- Passive Arming Settings
- Ignition Door Lock Control



MODULES

EVO-ONE

ALL-IN-ONE SECURITY SYSTEM INTERFACE w/ REMOTE START. COMPATIBLE w/ ALL EVO-ALL T-HARNESS

EVO-NIST1

ALL-IN-ONE SECURITY SYSTEM INTERFACE w/ REMOTE START, INCLUDES T-HARNESS FOR 2007+ NISSAN/INFINITI

TLA-ALL

UNIVERSAL ALL-IN-ONE DATA BYPASS & INTERFACE MODULE

TLA-RIDE

ENCRYPTED KEY IMMOBILIZER BYPASS SELF-LEARNING MODULE. 40-BIT & 80-BIT, FORD, LINCOLN, MERCURY, JAGUAR, MAZDA, TOYOTA, LEXUS, AND SCION.

TLA-CAN

UNIVERSAL CAN-BUS IMMOBILIZER BYPASS AND DOOR LOCK INTERFACE COMBO MODULE

TLA-CHRT3

CHRYSLER, DODGE, JEEP IGNITION MODULE WITH BYPASS & T-HARNESS FOR 2011+ PUSH TO START VEHICLE

TLA-CHRT4

CHRYSLER, DODGE, JEEP IGNITION MODULE WITH BYPASS & T-HARNESS FOR 2008 - 2012+ TIP START VEHICLE

TLA-CHRT5

CHRYSLER, DODGE, JEEP IGNITION MODULE WITH BYPASS & T-HARNESS FOR 2008 - 2012 REGULAR KEY START VEHICLE

THARGM1

GM VEHICLES IGNITION MODULE WITH BYPASS & T-HARNESS FOR 2010 + WITH FLIP-KEY

THARGM2

GM SUV VEHICLES IGNITION MODULE WITH BYPASS & T-HARNESS FOR 2007+



TLA-FLASHLINK

FLASHLINK UPDATER UPDATES THE FIRMWARE ON ALL TARANTULA MODULES.

INCLUDES:
WINDOWS (98/2000/XP/VISTA & WIN7) FLASHLINK MANAGER AND USB CABLE. PC AND INTERNET CONNECTION REQUIRED TO UPDATE AND FLASH FIRMWARE.

