

- Lightbars
- Directional Warning
- Perimeter Lighting
- Control Systems
- Sirens and Speakers
- Electronics
- Interior Lighting
- Work Area Lighting



For over 27 years, SoundOff Signal has been a symbol of bright lights, safety, quality and performance.

We take pride in engineering trusted products for the nation's top police and security forces. Every light, every siren, every control system we produce comes with our fundamental promise of reliability, innovation and excellence.

We stand for the first responder community - from urban fleets, to rural towns and anywhere in-between - we make products to brighten your presence and showcase safety.

Lightbars

- mpower® Exterior, Full Size 1
- mpower® Grid Light 2
- nFORCE® Exterior, Full Size 3
- nFORCE® 2 Exterior, Full Size 4
- nFORCE® Interior, Windshield 5
- nFUSE™ Exterior, Full Size 6
- MAGNUM Exterior, Full Size 7
- Pinnacle Exterior, Full Size 8
- Pinnacle Mini 9

Directional Warning

- mpower® Arrow System 11
- nFORCE® Traffic Controller 12
- UltraLITEplus 13
- TrafficMaster Arrow 16

Perimeter Lighting

- mpower® Fascia 17
- mpower® HD 18
- mpower® Perimeter White 21
- mpower® Fire/EMS 22
- ConfigureIT App 23
- nFORCE® Surface, 24, 25
- Deck/Grille, Recess and Windshield





Perimeter Lighting

(continued)

- Bolt 2 Surface..... 28
- Fusion Lite Surface 28
- Intersector Under Mirror 29
and Surface
- GHOST Surface, Deck/Grille..... 31, 32
and Recess
- ML6 Flush 33
- LED3 plus Mini Surface 34
- Universal UnderCover 35
- nLINE..... 36

Control Systems

- bluePRINT® 3 37
- bluePRINT® 3 Link® 40
- bluePRINT Sync™..... 41
- SoundOff Signal® 42

Sirens and Speakers

Sirens

- 500 Series Remote, Console 43
and Handheld
- 400 Series Remote, Console 44
and Handheld
- 200 Series Remote 46
- LF Aftershock Siren System 47

(continued) **Speakers**

- 100C Series 48
- 100J Series 49
- 100N Series 50

Electronics

- Switches..... 51, 52
- SW830 Multi-Purpose..... 53
Control Panel
- Flashers 54, 55
- LED Module 55
- Ignition Security Systems 56

Interior Lighting

- Dome 57
- Strip..... 58

Work Area

- PAR46 Unity® Spot..... 59
- Mighty Night, 400 Lumen Spot 60
- GOLIGHT..... 60



Emergency Solutions
2020 Product Catalog



Exterior Full Size Lightbars



Four Inch Module

EMPLB



Six Inch Module

EMPLB

● ● ● ● ○ To order configured products, contact your sales representative or customer service department.

Features

- At only 1" thick, mpower is 50% thinner than its leading competitors
- Silicone ClearDuty® molded one-piece housing and optic design delivers advantages over conventional polycarbonate lenses:
 - A smaller footprint with maximized candela output
 - Greater resistance to gravel pitting, scratching or cracking
 - Improved sealing to prevent water from entering light
 - Higher UV and thermal stability to prevent lens from yellowing over time

| | | |
|---|--|-------------------------------------|
| INPUT VOLTAGE RANGE | 9-16 Vdc | |
| NUMBER OF LEDS AND MAXIMUM CURRENT DRAW @ 12.8 VDC | | |
| Inboard Warning Module | <1 Amp | |
| Corner Module | <1.9 Amp (Two 3" mpower modules) | |
| Alley | <1 Amp | |
| NUMBER OF LEDS AND MAXIMUM WATTAGE @ 12.8 VDC | | |
| | Four Inch Module | Six Inch Module |
| Inboard Warning Module | <5.9 Watts | <7.7 Watts |
| Corner Module | <11.6 Watts (Two 3" mpower modules) | <11.6 Watts (Two 3" mpower modules) |
| Alley | <5.9 Watts | <5.9 Watts |
| FLASH PATTERNS | | |
| Warning | 66 | |
| Takedown/Alley | 25 | |
| Arrow L/C/R | 11 | |
| OPERATING TEMPERATURE | -40° C to +65° C / -40° F to +149° F | |
| STANDBY CURRENT @ 12.8 VDC | <10mA | |
| DIMENSIONS | Four Inch Module | Six Inch Module |
| Lengths | 8 Module: 44.2" (112 cm) | 5 Module: 42" (107 cm) |
| | 9 Module: 48.2" (112 cm) | 6 Module: 48.4" (122 cm) |
| | 10 Module: 52.7" (134 cm) | 7 Module: 54.8" (139 cm) |
| Height | All modules: 1.1" (2.7 cm) | |
| Depth | All modules: 10.6" (27 cm) | |
| MOUNTS | Standard hook bracket mount with angle adjustment wedge Headache rack mount | |
| CERTIFICATIONS | SAE J595 and J845 Class 1 certified (red, blue, amber and white) CA Title 13 Class B certified (red, blue and amber) ECE R65 Cat T, Class 2 certified (red, blue and amber) EMC/ECE R10-5 certified | |
| WARRANTY | Five-year (ten-year on UV lens discoloration) | |

Grid Light



1x1 Single Stack



2x2 Single Stack



1x1 Dual Stack



2x2 Dual Stack

EMPG

Refer to the technical specifications for available mounting options.

● ● ● ● ○ To order configured products, contact your sales representative or customer service department.

Features

- Single, dual and tricolor capabilities
- ClearDuty® silicone molded optic design delivers advantages over conventional polycarbonate lenses
- Multiple mounting options: permanent, pipe, magnetic and mirror mounts
- Ability to spec 4-16 modules with single and dual stacked options
- Rugged construction with non-corrosive aluminum top/bottom and durable rubber corners
- Available in silver or black housing
- Current 3-wire four inch mpower lightbar module variants
- Synchronizes with other sync 2 products
- Secondary flash or steady burn options
- Environmentally-safe materials which allow disassembly after useable life; may be recycled

| | | |
|------------------------------|--|-----------------------|
| INPUT VOLTAGE RANGE | 9-32 Vdc | |
| FLASH PATTERNS | | |
| Single, Dual and Tricolor | Quint (SAE); Warp, Inter-Cycle; Double (SAE); Quad; Power Pulse; Road Runner (SAE/CaXIII); Q-Switch (SAE); Steady Burn + Flash; Roadrunner; Steady Burn + Flash; Quad; Quad 2 and Double 2 | |
| Dual and Tricolor | Random 1 and Random 2 | |
| OPERATING TEMPERATURE | -40° C to +85° C, thermal fold back may begin at temperatures above +50C ambient | |
| CIRCUIT PROTECTION | Reverse polarity, transient voltage and high temperature and over-voltage | |
| DIMENSIONS | | |
| 1x1 Single Stack | Length: 7.46" (19 cm) | Height: 1.5" (3.8 cm) |
| 1x1 Dual Stack | Length: 7.46" (19 cm) | Height: 2.4" (6.1 cm) |
| 2x2 Single Stack | Length: 11.71" (29.74 cm) | Height: 1.5" (3.8 cm) |
| 2x2 Dual Stack | Length: 11.71" (29.74 cm) | Height: 2.4" (6.1 cm) |
| MOUNTS | Combo mount | |
| Mirror | Combo or flat mount | |
| Magnetic | Dual or quad mount | |
| CERTIFICATIONS | SAE J595 Class 1 certified SAE J845 Class 2 certified CA Title 13 certified NFPA compliant | |
| WARRANTY | Five-year (ten-year on UV lens discoloration) | |



Exterior Full Size Lightbar



ENFLB

Features

- Modules can be configured as single, dual or tricolor for maximum functionality
- Inboard modules are available in single color 6 or 9 LEDs, dual color 12 LEDs or tricolor 18 LEDs
- Corner modules are offered in single color 12 or 18 LEDs, dual color 24 LEDs or tricolor 30 LEDs

INPUT VOLTAGE RANGE 9-16 Vdc

NUMBER OF LEDs AND MAXIMUM CURRENT DRAW @ 12.8 VDC

Inboard Warning Modules 6 LED Single Color: <1.0 Amp; 9 LED Single Color: <1.5 Amp; 12 LED Dual Color: <1.0 Amp or 18 LED Tricolor: <1.0 Amp
Corner Modules 12 LED Single Color: <2.0 Amp; 18 LED Single Color: <3.0 Amp; 24 LED Dual Color: <2.0 Amp or 30 LED Tricolor: <2.0 Amp
Takedown 6 LED Single Color: <1.0 Amp
Alley 3 LED Single Color: <0.5 Amp

NUMBER OF LEDs AND MAXIMUM WATTAGE @ 12.8 VDC

Inboard Warning Modules 6 LED Single Color: <6.4 Watts; 9 LED Single Color: <9.6 Watts; 12 LED Dual Color: <6.4 Watts or 18 LED Tricolor: <6.4 Watts
Corner Modules 12 LED Single Color: <12.8 Watts; 18 LED Single Color: <19.2 Watts; 24 LED Dual Color: <12.8 Watts or 30 LED Tricolor: <12.8 Watts
Takedown 6 LED: <12.8 Watts
Alley 3 LED: <6.4 Watts

FLASH PATTERNS

Warning 66
Takedown/Alley 25
Arrow L/C/R 11

OPERATING TEMPERATURE -40° C to +65° C / -40° F to +149° F

DIMENSIONS

Lengths 2 Module: 24" (61 cm); 4 Module: 36" (91 cm); 5 Module: 42" (107 cm); 6 Module: 48" (122 cm); 7 Module: 54" (137 cm); 8 Module: 60" (152 cm) or 10 Module: 72" (183 cm)
Height All modules: 2.55" (6.5 cm)
Depth All modules: 12" (31 cm)

MOUNTS

Standard hook kit mount with angle adjustment wedge
 Headache rack mount

CERTIFICATIONS

SAE J845/J595 Class 1 certified and California Title 13, Class B certified
 ECE R65 Category T, Class 2 certified (red or blue) and EMC/ECE R10-4 certified

WARRANTY

Five-year

ACCESSORIES

Lightbar sold separately.

Auto Dim Retrofit Kit

Blue PNFLBTRDRLBL
Graphite (shown) PNFLBTRDRLGY
Red PNFLBTRDRLRD
Amber Lexan Cover PNFLBTRDRLYL



Includes auto dim sensor board, harnesses, mounting hardware and top cover.

Retrofit Solar Panel Kit

Top Cover Color
Blue PNFLBTSLSLGBL
Gray PNFLBTSLSLGLGY
Red PNFLBTSLSGLRD
Yellow PNFLBTSLSGLYL



Not available for the 24 inch lightbar.



Exterior Full Size Lightbar Coming Soon!



ENFLB

Features

- Modules can be configured as single, dual or tricolor for maximum functionality
- Inboard modules are available in single color 6 or 9 LEDs, dual color 12 LEDs or tricolor 18 LEDs
- Corner modules are offered in single color 12 or 18 LEDs, dual color 24 LEDs or tricolor 30 and 36 LEDs
- Available with tricolor alleys

INPUT VOLTAGE RANGE 9-32 Vdc

NUMBER OF LEDS AND MAXIMUM CURRENT DRAW @ 12.8 VDC

| | |
|--------------------------------|--|
| Inboard Warning Modules | 6 LED Single Color: <1.0 Amp; 9 LED Single Color: <1.5 Amp; 12 LED Dual Color: <1.0 Amp or 18 LED Tricolor: <1.0 Amp |
| Corner Modules | 12 LED Single Color: <2.0 Amp; 18 LED Single Color: <3.0 Amp; 24 LED Dual Color: <2.0 Amp or 30 LED Tricolor: <2.0 Amp |
| Takedown | 6 LED Single Color: <1.0 Amp |
| Alley | 3 LED Single Color: <0.5 Amp |

NUMBER OF LEDS AND MAXIMUM WATTAGE @ 12.8 VDC

| | |
|--------------------------------|--|
| Inboard Warning Modules | 6 LED Single Color: <6.4 Watts; 9 LED Single Color: <9.6 Watts; 12 LED Dual Color: <6.4 Watts or 18 LED Tricolor: <6.4 Watts |
| Corner Modules | 12 LED Single Color: <12.8 Watts; 18 LED Single Color: <19.2 Watts; 24 LED Dual Color: <12.8 Watts or 30 LED Tricolor: <12.8 Watts |
| Takedown | 6 LED: <12.8 Watts |
| Alley | 3 LED: <6.4 Watts |

FLASH PATTERNS

| | |
|-----------------------|----|
| Warning | 66 |
| Takedown/Alley | 25 |
| Arrow L/C/R | 11 |

OPERATING TEMPERATURE -40° C to +65° C / -40° F to +149° F

DIMENSIONS

| | |
|----------------|---|
| Lengths | 2 Module: 24" (61 cm); 4 Module: 36" (91 cm); 5 Module: 42" (107 cm); 6 Module: 48" (122 cm); 7 Module: 54" (137 cm); 8 Module: 60" (152 cm) or 10 Module: 72" (183 cm) |
| Height | All modules: 2.55" (6.5 cm) |
| Depth | All modules: 12" (31 cm) |

MOUNTS

Standard hook kit mount with angle adjustment wedge
Headache rack mount

CERTIFICATIONS

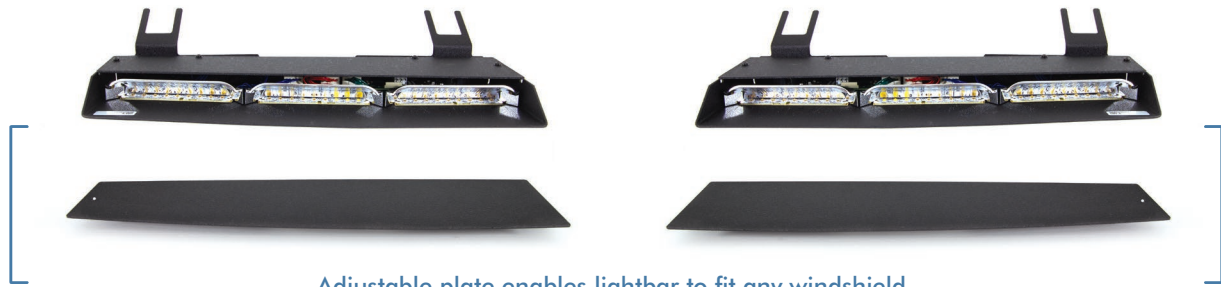
SAE J845/J595 Class 1 certified and California Title 13, Class B certified
ECE R65 Category T, Class 2 certified (red or blue) and EMC/ECE R10-4 certified

WARRANTY

Five-year



Interior Windshield Lightbars



Adjustable plate enables lightbar to fit any windshield.

Universal, 3 Module

Split, Two-piece

ENFWBFS



4 Module

Split, Two-piece (shown)

Full, One-piece

ENFWBFS

ENFWBFF

● ● ● ● ○ To order configured products, contact your sales representative or customer service department.

Features

- Modules are offered in single color 6 or 9 LEDs, dual color 12 LEDs or tricolor 18 LEDs
- Windows-based PC application simplified programming and enhances configurability and control
- User configurable options include cruise mode, nighttime manual dimming, 34 programmable flash patterns and steady burn
- Direct connect option is available with single or dual color lightbars
 - The lightbar simplifies installation by eliminating the breakout box and connecting activation wires directly to the lightbar
- Takedown modules can be designated anywhere
- Universal model with adjustable mounting brackets accommodate most windshield angles for even broader vehicle compatibility
- Vehicle-specific shrouds available
- Easy connection with CAT5 from breakout box to light/siren controller

| | | |
|---|--|-----------------|
| INPUT VOLTAGE RANGE | 10-16 Vdc | |
| NUMBER OF LEDs AND MAXIMUM CURRENT DRAW @ 12.8 VDC | | |
| LED Modules | 6 LED Single Color: <1.0 Amp; 9 LED Single Color: <1.5 Amps; 12 LED Dual Color: <1.0 Amp or 18 Tricolor: <1.0 Amp | |
| NUMBER OF LEDs AND MAXIMUM WATTAGE @ 12.8 VDC | | |
| Inboard Warning Modules | 6 LED Single Color: <6.4 Watts; 9 LED Single Color: < 9.6 Watts; 12 LED Color: <6.4 Watts or 18 LED Tricolor: <6.4 Watts | |
| Takedown | 6 LED: <12.8 Watts (interior windshield) | |
| Work Light | 8 <12.8 Watts (interior rear deck; 3 module only) | |
| FLASH PATTERNS | | |
| Warning | 34 | |
| Arrow L/C/R | 8 | |
| OPERATING TEMPERATURE | | |
| | -40° C to +65° C / -40° F to +149° F | |
| DIMENSIONS | | |
| | 3 Module | 4 Module |
| Length | 14.3" (36 cm) | 20" (51 cm) |
| Height | 1" (2.5 cm) | 1" (2.5 cm) |
| Depth | 5" to 7.5" (12.7 cm to 19 cm) each side adjustable 7.5" (19 cm) (universal, each side) | |
| WARRANTY | Five-year | |



Exterior Full Size Lightbar

Coming Soon!



● ● ● ● ○ To order configured products, contact your sales representative or customer service department.

Features

- Slim profile, available in lengths from 36 to 72 inches
- Modules can be configured as single or dual color
- Lightbars with dual color modules that include white LEDs can provide a full 360 degrees of bright scene lighting
- Replaceable outer lens available in clear, amber, red or blue
- Arrow control modules can be combined with warning colors for maximum functionality
- Windows-based PC application to simplify programming, enhance configurability and control
- Over 50 flash patterns, including cruise mode, takedown and alley (when properly configured) and R/L/C arrow (when properly configured)
- Auto dimming

INPUT VOLTAGE RANGE 9-32 Vdc

OPERATING TEMPERATURE -40° C to + 65° C / -40° F to + 149° F

DIMENSIONS

| | |
|---------|---------------------------|
| Lengths | 14 Module: 36" (91.4 cm) |
| | 16 Module: 42" (106.7 cm) |
| | 18 Module: 48" (121.9 cm) |
| | 20 Module: 54" (137.2 cm) |
| | 22 Module: 60" (152.4 cm) |
| | 26 Module: 72" (182.8 cm) |

MOUNTS Standard hook bracket mount with wide angle adjustments
Headache rack mount

CERTIFICATIONS SAE J845/J595 Class 1 certified
CA Title 13, Class B certified

WARRANTY Five-year

MAGNUM

Exterior Full Size Lightbar



EMG2000

● ● ● ● ○ To order configured products, contact your sales representative or customer service department.

Features

- Available in clear or amber lenses
- Replaceable outer lens
- Dimming capability
- 6 LED inboard modules deliver Fusion Boost technology for extreme brightness
- 3 LED inboard modules designed with a new Turbo Optic to deliver maximum intensity at an affordable price
- 6 or 12 LED corner modules
- Optional rear stop/turn modules available
- Optional 12 wire discrete harness allows operation without break-out box (10-30 Vdc only)

INPUT VOLTAGE RANGE 10-16 Vdc or 10-30 Vdc

NUMBER OF LEDS AND MAXIMUM CURRENT DRAW @ 12.8 VDC

Inboard Warning Modules 3 LED Single Color: <0.5 Amp; 6 LED Single Color: <1.0 Amp or 12 LED Dual Color: <1.0 Amp
Corner Modules 6 LED Single Color: <1.0 Amp or 12 LED Dual Color: <1.6 Amp
Takedowns 3 LED: <0.42 Amp; 6 LED: <0.84 Amp or 9 LED: <1.26 Amp
Alley 3 LED: <0.42 Amp

NUMBER OF LEDS AND MAXIMUM WATTAGE @ 12.8 VDC

Inboard Warning Modules 3 LED Single Color: <3.2 Watts; 6 LED Single Color: <6.4 Watts or 12 LED Dual Color: <6.4 Watts
Corner Modules 6 LED Single Color: <6.4 Watts or 12 LED Single Color: <10.2 Watts
Takedowns 3 LED: <2.7 Watts; 6 LED: <5.4 Watts or 9 LED: <8.1 Watts
Alley 3 LED: <2.7 Watts

FLASH PATTERNS

Warning 21
Takedown 5
Alley 5
Arrow L/C/R 4
Arrow Warning Solid 9 or Split 17

OPERATING TEMPERATURE -40° C to +65° C / -40° F to +149° F

DIMENSIONS

Lengths 2 Module: 23" (58.4 cm); 4 Module: 35.5" (90.2cm); 5 Module: 42" (106 cm) or 6 Module: 48" (12.9 cm)
Height All modules: 2.3" (5.8 cm)
Depth All modules: 12.3" (31.2 cm)

MOUNTS

Headache mount
Low profile fixed mount

OPTIONS

Rear split arrow is available with 6 or 12 LED dual color modules

CERTIFICATIONS

SAE J845/J595 Class 1 certified
Article 22, CA Title 13 compliant
ECE R10-4 EMC certified; ECE R65 Category T, Class 1 certified (amber)
ECE R65 Category T, Class 2 certified (red and blue)

WARRANTY

Five-year



Exterior Full Size Lightbar



EPL9000

● ● ● ● ○ To order configured products, contact your sales representative or customer service department.

Features

- Fusion Technology, the optic is designed like a lighthouse to boost the light farther and wider for a brighter, safer warning signal
- Streamlined, modular design is easy to maintain with field replaceable modules that are easily upgradeable
- Clear or color lenses in blue, red or amber
- 6 or 12 LED dual color arrow option available
- Dimming capability

INPUT VOLTAGE RANGE 10-16 Vdc

NUMBER OF LEDS AND MAXIMUM CURRENT DRAW @ 12.8 VDC

| | |
|-------------------------|---|
| Inboard Warning Modules | 6 LED Single Color: <1.0 Amp 12 LED Dual Color: <1.0 Amp |
| Corner Module | 12 LED Single Color: <2.0 Amp |
| Takedown | 6 LED: <1.0 Amp |
| Alley | 1 LED: <0.5 Amp |

NUMBER OF LEDS AND MAXIMUM WATTAGE @ 12.8 VDC

| | |
|-------------------------|---|
| Inboard Warning Modules | 6 LED Single Color: <6.4 Watts 12 LED Dual Color: <6.4 Watts |
| Corner Module | 12 LED Single Color: <12.8 Watts |
| Takedown | 6 LED: <12.8 Watts |
| Alley | 1 LED: <6.4 Watts |

FLASH PATTERNS

| | |
|---------------|---------------------|
| Warning | 21 |
| Takedown | 5 |
| Alley | 5 |
| Arrow L/C/R | 4 |
| Arrow Warning | Solid 9 or Split 17 |

OPERATING TEMPERATURE -40° C to +65° C / -40° F to +149° F

DIMENSIONS

| | |
|---------|---|
| Lengths | 4 Module: 36" (91 cm); 5 Module: 42" (107 cm); 6 Module: 48" (122 cm); 7 Module: 54" (137 cm); 8 Module: 60" (152 cm) or 9 Module: 72" (183 cm) |
| Height | All modules: Inboard: 1.75" (4.45 cm) and corner: 2.5" (6.35 cm) |
| Depth | All modules: 10" (25 cm) |

MOUNTS

Adjustable mount
Headache mount
Low profile fixed mount

CERTIFICATIONS

SAE J845 and J595 Class 1 certified
Article 22, CA Title 13 certified

WARRANTY

Five-year



7000 and 7100 Mini Lightbars



EPL7000

Clear Dome

| | |
|------------------------------------|------------|
| Magnetic with Cig Plug | EPL7M+(x)C |
| Standard Permanent (shown) | EPL7PD(x)C |
| High Permanent | EPL7HD(x)C |
| Standard Permanent (25 foot cable) | EPL7PF(x)C |
| High Permanent (25 foot cable) | EPL7HF(x)C |

Replace (x) in the Order Number for Standard Color Selection

| | | | | | | | | | | |
|--------------|--------|--------|--------|--------|--------|--------|--------|--------|--------|--------|
| Solid Colors | A = ● | B = ● | R = ● | W = ○ | G = ● | | | | | |
| Split Colors | D = ●○ | E = ●○ | F = ●○ | J = ●● | K = ●● | M = ●● | H = ●○ | L = ●● | N = ●● | P = ●● |



EPL7100

Clear Dome

| | |
|---------------------------------|-------------|
| Magnetic Mount | |
| Amber LEDs | EPL71M+AC |
| Amber/White LEDs | EPL71M+FC |
| Red/Amber LEDs | EPL71M+KC |
| Blue/Amber LEDs | EPL71M+MC |
| Green Solid/Split LEDs | EPL71M+(x)C |
| Standard Permanent Mount | |
| Amber LEDs | EPL71PDAC |
| Amber/White LEDs (shown) | EPL71PDFC |
| Red/Amber LEDs | EPL71PDKC |
| Blue/Amber LEDs | EPL71PDMC |
| High Permanent Mount | |
| Amber LEDs | EPL71HDAC |
| Amber/White LEDs | EPL71HDFC |
| Red/Amber LEDs | EPL71HDKC |
| Blue/Amber LEDs | EPL71HDMC |

Replace (x) in the Order Number for Standard Color Selection

| | |
|--------------|-----------------------------------|
| Solid Color | G = ● |
| Split Colors | H = ●○ L = ●● N = ●● P = ●● |

● ● ● ● ○ To order configured products, contact your sales representative or customer service department.

PINNACLE 7000 and 7100 Mini Lightbars

Features

- Magnetic mount has cig plug with 2-button switch panel (on, off and flash pattern advance)
 - Red LED indicator light and 10' cord length
 - 4 extra strong magnets each with an 85 pound pull each to prevent the lightbar from slipping or moving

| | |
|-----------------------|---|
| INPUT VOLTAGE RANGE | 10-16 Vdc |
| CURRENT DRAW | 2 Amp average @ 12.8 Vdc |
| LED COUNT | 24 LEDs |
| FLASH PATTERNS | 28 |
| OPERATING TEMPERATURE | -40° C to +65° C / -40° F to +149° F |
| DIMENSIONS | |
| Length | 14.16" (36 cm) |
| Height | 1.90" (4.8 cm) |
| Depth | 8.27" (21 cm) |
| MOUNTS | |
| | Magnetic mount Permanent mount High Permanent mount |
| CERTIFICATIONS | |
| 7000 | SAE J845 Class 1 certified (blue or red solid color LEDs) |
| 7100 | SAE J845 Class 1 certified (amber solid color LEDs) |
| WARRANTY | Five-year |

ACCESSORY

Lightbar sold separately.



VHB Magnetic Plate Adapter Kit

Kit includes (1) one VHB pad and metal plate

PNRLBK03

Additional mounting options when using non-magnetic mounting surfaces

Note: 4 (four) plate adapter kits are required for the mini lightbar



Arrow System



EMPAK

● ● ● ● ○ To order configured products, contact your sales representative or customer service department.

Non-bracket option available; parts sold separately

Configured product includes:

- 3- or 4-module bracket (modules based on vehicle model)
- mpower 4 inch 3-wire lights (quantity based on vehicle model)

Features

- Warning arrow greatly reduces install time through use of 3-wire technology
- Functionality mimics the rear of a lightbar
- Integrates under the spoiler of the vehicle for a seamless look
- Available in single, dual or tricolor



Shown: Chevrolet Tahoe Arrow System (sold in pairs)

| | |
|-----------------------|--|
| INPUT VOLTAGE RANGE | 9-32 Vdc |
| CURRENT STANDBY | < 1.0 Amp @ 12.8 Vdc, < 0.5 Amp @ 25.6 Vdc |
| FLASH PATTERNS | 28 Single, 22 Dual or 19 Tricolor patterns |
| OPERATING TEMPERATURE | -40° C to +65° C |
| CERTIFICATIONS | SAE J595 Class 1 certified, SAE J845 Class 1 certified and CA Title 13, Article 22 compliant |
| WARRANTY | Five-year |

ACCESSORIES

Lights and replacement modules sold separately.

BRACKETS

Rear Spoiler, Stud Mounts

| | | |
|-----------|--|------------|
| Chevrolet | Tahoe, Suburban, Yukon and Yukon XL, 2015-2018 | |
| | Three inch Fascia light | PMP2RSBTH3 |
| | Four inch Fascia light | PMP2RSBTH4 |
| Ford | PI Utility, 2011-2019 | |
| | Three inch Fascia light | PMP2RSBUY3 |
| | Four inch Fascia light | PMP2RSBUY4 |

mpower Traffic Controller
Coming Summer 2020



Interior Traffic Controller



| | |
|------------------|--------------|
| 4 Module | ENFTCDGS1204 |
| 6 Module (shown) | ENFTCDGS1206 |
| 8 Module | ENFTCDGS1208 |

● ● ● ● ○ To order configured products, contact your sales representative or customer service department.

Features

- Designed and tested to withstand tough working applications and extreme weather environments
- Modules can be specified in any combination of single color 6 or 9 LED, dual color 12 LED or tricolor 18 LED counts
- Modules that utilize white LEDs can be specified as work lights or flood lighting
- Manual dimming capability for nighttime use
- Cruise mode
- Use of PC application in conjunction with SoundOff Signal® sirens simplifies install with "plug and play" RJ45 capability
- Standard "L" shaped mounting brackets are included

INPUT VOLTAGE RANGE 10-16 Vdc

NUMBER OF LEDs AND MAXIMUM CURRENT DRAW @ 12.8 Vdc

6 LED Single Color: <1.0 Amp; 9 LED Single Color: <1.5 Amp; 12 LED Dual Color: <1.0 Amp or 18 LED Tricolor: <1.0 Amp

NUMBER OF LEDs and MAXIMUM WATTAGE @ 12.8 Vdc

6 LED Single Color: <6.4 Watts; 9 LED Single Color: <9.6 Watts; 12 LED Dual Color: <6.4 Watts or 18 LED Tricolor: <6.4 Watts

FLASH PATTERNS

| | |
|---------|----|
| Warning | 34 |
| Arrow | 8 |

OPERATING TEMPERATURE -40° C to + 65° C / -40° F to +149° F

DIMENSIONS

| | |
|---------|---|
| Lengths | 4 Module: 19" (48.3 cm); 6 Module: 26.7" (67.8 cm) or 8 Module: 35.5" (90 cm) |
| Height | All Modules: 1.9" (4.7 cm) |
| Depth | All modules: 2.47" (6.3 cm) |

CERTIFICATION SAE J845 Class 1 certified

WARRANTY Five-year

UltraLITE plus

Exterior Directional Warning Bar with Arrow Ends



12 Module, 15 foot harness
12 Module, 25 foot harness

EL3PA12A00A
EL3PA12A01A

Features

- New addition to our UltraLITEplus product line
- Six module arrow heads provide direct, visual communication to oncoming traffic

| | |
|-----------------------|--|
| INPUT VOLTAGE RANGE | 10-16 Vdc |
| CURRENT DRAW | 10 Amps Peak, 5 Amp avg. with 50% duty cycle flash pattern |
| FLASH PATTERNS | Warning, arrow or default |
| OPERATING TEMPERATURE | -40° C to +85° C |
| DIMENSIONS | |
| Length | 51.75" (131.45 cm) |
| Height | 21.5" (54.6 cm) |
| Depth | 1.5" (3.8 cm) |
| MOUNTING | Attachment brackets (included) |
| WARRANTY | Five-year |

ACCESSORY

Directional warning bar and back rack sold separately.

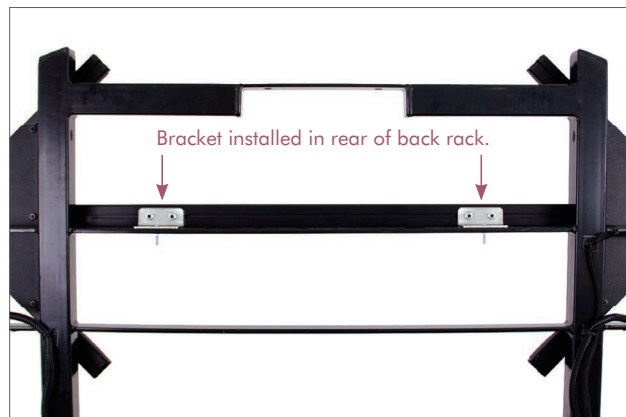
Back Rack Bracket Kit

PUL3BRM

Includes two mounting brackets and hardware

Features

- Attaches back of arrow to cross bar of the back rack



UltraLITE plus

Directional Warning Bars



Exterior



Interior

Exterior Directional Warning

Solid and Split Colors

| | |
|----------|---------------|
| 2 Module | EL3PD02A00(x) |
| 4 Module | EL3PD04A00(x) |
| 8 Module | EL3PD08A00(x) |

Single Warning Ends, Amber Center

| | |
|----------|---------------|
| 8 Module | EL3PD08A10(x) |
|----------|---------------|

Single Warning Ends, Amber Center

(flashes independent from arrow)

| | |
|-----------|---------------|
| 8 Module | EL3PD08B10(x) |
| 12 Module | EL3PD12A00(x) |

Single Warning Ends, Amber Center

| | |
|-----------|---------------|
| 12 Module | EL3PD12A10(x) |
|-----------|---------------|



Interior Windshield

Solid and Split Colors

| | |
|----------|---------------|
| 2 Module | EL3PH02A0+(x) |
| 4 Module | EL3PH04A0+(x) |

Interior Directional Warning

Solid and Split Colors

| | |
|----------|---------------|
| 4 Module | EL3PH04A00(x) |
| 8 Module | EL3PH08A00(x) |

Single Warning Ends, Amber Center

| | |
|----------|---------------|
| 8 Module | EL3PH08A10(x) |
|----------|---------------|

Single Warning Ends, Amber Center

(flashes independent from arrow)

| | |
|-----------|---------------|
| 8 Module | EL3PH08B10(x) |
| 12 Module | EL3PH12A00(x) |

Single Warning Ends, Amber Center

| | |
|-----------|---------------|
| 12 Module | EL3PH12A10(x) |
|-----------|---------------|

Dual Warning Ends, Amber Center

| | |
|-----------|---------------|
| 12 Module | EL3PH12A20(x) |
| | EL3PZ12A00(x) |

Single Warning Ends, Amber Center

(flashes independent from arrow)

| | |
|-----------|---------------|
| 12 Module | EL3PH12B10(x) |
|-----------|---------------|

Dual Warning Ends, Amber Center

(flashes independent from arrow)

| | |
|-----------|---------------|
| 12 Module | EL3PH12B20(x) |
|-----------|---------------|

Windshield Mount

| | |
|-----------|---------------|
| 8 Module | EL3PZO8A00(x) |
| 12 Module | EL3PZ12A00(x) |

Replace (x) in the Order Number for Standard Color Selection

Solid Colors A = ● B = ● G = ● R = ● W = ○

Split Colors A = ● B = ● R = ● W = ○ D = ●○ E = ●○ F = ●○ H = ●○ J = ●● K = ●● L = ●● M = ●● N = ●● P = ●●

● ● ● ● ○ To order configured products, contact your sales representative or customer service department.

UltraLITE plus

Directional Warning Bars

Features

Exterior

- Custom color configurations offered for exterior 4, 8 or 12 module bars
- 8 and 12 module warning bars can be programmed to flash three separate warning patterns controlled by discrete input wires
- Includes universal "L" brackets and 14 feet of cable

Windshield

- Includes permanent headliner brackets (pair) and 11.5 feet of shielded cable
- Suction cup and cig plug mounts include universal headliner brackets (pair)

Interior

- Slim, narrow design is perfect for headliner, dash, windshield or rear deck mounts in all types of vehicles
- Program up to three warning patterns on the 8 or 12 module, dual or split color bars
- Includes universal "L" brackets and 14 feet of cable

| | |
|--|---|
| INPUT VOLTAGE RANGE | 10-16 Vdc |
| CURRENT DRAW @ 12.8 VDC | |
| Suction Cup Mount | <1 Amp per module |
| and Headliner Mount | <1 Amp for every 2 modules (flash pattern dependent) |
| FLASH PATTERNS | |
| Suction Cup Mount | 2 Module: 33 flash patterns; 4 Module: 21 flash patterns; 8 Module: solid colors, 20 arrow or 12 warning, split colors, |
| and Headliner Mount | 19 warning flash patterns or 12 Module: solid colors, 20 arrow or 12 warning, split colors, 19 warning flash patterns |
| LED COUNTS | 2 Module: 12 LEDs; 4 Module: 24 LEDs; 8 Module: 48 LEDs or 12 Module: 72 LEDs |
| OPERATING TEMPERATURE | -40° C to +65° C / -40° F to +149° F |
| DIMENSIONS | |
| Lengths | 2 Module: 6.9" (18 cm); 4 Module: 13.25" (34 cm); 8 Module: 26" (66 cm) or 12 Module: 38.75" (98 cm) |
| Height | All modules: 1.5" (3.8 cm) |
| Depth | All modules: 1.5" (3.8 cm) |
| Suction Cup Mount and Headliner Mount | |
| Lengths | 2 Module: 7" (18 cm); 4 Module: 14.25" (34 cm); 8 Module: 26" (66 cm) or 12 Module: 38.75" (98 cm) |
| Height | All modules: 1.5" (3.8 cm) |
| Depth | All modules: 3.6" (9.1 cm) |
| CERTIFICATIONS | SAE J595 Class 1 certified Article 22, CA Title 13 compliant |
| WARRANTY | Five-year |

ACCESSORIES: Exterior and Interior

Directional warning bar sold separately.

Visor

Chevrolet Tahoe, pair

PUL3M02

Universal Brackets

- One hole, 1.5 inches, pair
- Two holes, 2 inches, pair
- Three holes, 2.5 inches, pair
- Seven holes, 4 inches, pair

PUL3DGM01
PUL3DGM02
PUL3DGM03
PUL3DGM

TrafficMaster

Exterior Directional Arrow Warning Bars



Solid Arrow
8 Module ETT3MLED-P



Split Arrow
8 Module ETT3MLEDSA

Features

- Includes control box and mounting brackets
- Control box features illuminated display to show flash pattern selected and 5-position rotary switch to control all primary functions
- Eight sealed weatherproof modules
- Hard wire installation with 25' cable

| | |
|------------------------------|---|
| INPUT VOLTAGE RANGE | 10-30 Vdc |
| CURRENT DRAW | 2.2 Amps max |
| LED COUNT | 168 LEDs |
| FLASH PATTERNS | 2 warning patterns and 6 arrow patterns |
| OPERATING TEMPERATURE | -30° C to +65° C / -22° F to +149° F |

DIMENSIONS

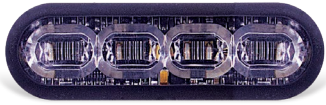
| | |
|--------------------|------------------------|
| Solid Arrow | |
| Length | 42" (107 cm) |
| Height | 2.75" (7 cm) |
| Depth | 1.75" (4.5 cm) |
| Split Arrow | |
| Length | 21" (53 cm) (each end) |
| Height | 2.75" (7 cm) |
| Depth | 1.75" (4.5 cm) |

MOUNTING Surface mount (brackets included)

WARRANTY Five-year

Fascia Lights

Stud Mounts



Three Inch

4 LED, Single Color

EMPS1SLS1(x)

8 LED, Single or Dual Colors

EMPS1SLS3(x)

12 LED, Tricolor

EMPS1SLS4(xxx)

Three Inch, Ford Grille Mount Application

4 LED, Single Color

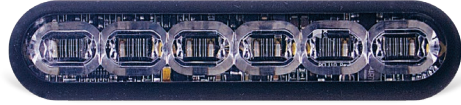
EMPS1STS1(x)

8 LED, Single or Dual Colors

EMPS1STS3(x)

12 LED, Tricolor

EMPS1STS4(xxx)



Four Inch

6 LED, Single Color

EMPS2STS2(x)

8 LED, Single Color

EMPS2STS3(x)

12 LED, Dual Color

EMPS2STS4(x)

18 LED, Tricolor

EMPS2STS5(xxx)

Spot, Four Inch

6 LED, Single Color

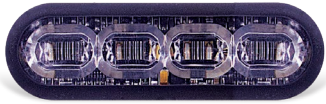
EMPS202KG(x)

Flood, Four Inch

6 LED, White LEDs

EMPS202KR-W

Quick Mounts



Three Inch

4 LED, Single Color

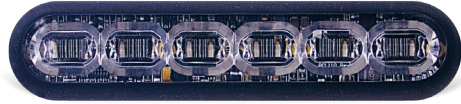
EMPS1QMS1(x)

8 LED, Single or Dual Colors

EMPS1QMS3(x)

12 LED, Tricolor

EMPS1QMS4(xxx)



Four Inch

6 LED, Single Color

EMPS2QMS2(x)

8 LED, Single Color

EMPS2QMS3(x)

12 LED, Dual Color

EMPS2QMS4(x)

18 LED, Tricolor

EMPS2QMS5(xxx)

Spot, Four Inch

6 LED, Single Color

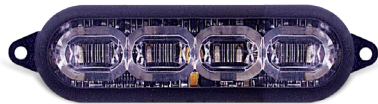
EMPS202KE(x)

Flood, Four Inch

6 LED, White LEDs

EMPS202KE(x)-W

Screw Mounts



Three Inch

4 LED, Single Color

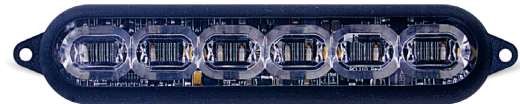
EMPS1SMS1(x)

8 LED, Single or Dual Colors

EMPS1SMS3(x)

12 LED, Tricolor

EMPS1SMS4(xxx)



Four Inch

6 LED, Single Color

EMPS2SMS2(x)

8 LED, Single Color

EMPS2SMS3(x)

12 LED, Dual Color

EMPS2SMS4(x)

18 LED, Tricolor

EMPS2SMS5(xxx)

Spot, Four Inch

6 LED, Single Color

EMPS202KF(x)

Flood, Four Inch

6 LED, White LEDs

EMPS202KQ-W

mpower® HD Light



Four Inch

- 6 LED, Single Color
- 8 LED, Single Color
- 12 LED, Dual Color
- 18 LED, Tricolor

- EMPS4STS2(x)
- EMPS4STS3(x)
- EMPS4STS4(x)
- EMPS4STS5(xxx)

Replace (x) or (xxx) in the Order Number for Standard Color Selection

| | | | | |
|-----------------------------|-----------|-----------|--------|--------|
| 4, 6 or 8 LED Single Colors | A = ● | B = ● | R = ● | W = ○ |
| 8 or 12 LED Dual Colors | D = ●○ | E = ●○ | F = ●○ | J = ●● |
| 12 or 18 LED Tricolors | RBA = ●●● | RBW = ●●○ | | |

●●●○ To order configured products, contact your sales representative or customer service department.

Features

- Single, dual or tricolor capabilities
- Ability to integrate visually into today's police vehicles
- Collaboration with Dow Corning® to develop ClearDuty® optical design
- ClearDuty® silicone molded one-piece housing and optic design delivers advantages over conventional polycarbonate lenses
 - A smaller footprint with maximized candela output
 - Greater resistance to gravel pitting, scratching or cracking
 - Improved sealing to prevent water from entering light
 - Higher UV and thermal stability to prevent lens from yellowing over time
- Universal rock bracket kit is available (stud mount and HD only)
- Compatible with the ConfigureIT system for easy light programming (does not include spot and flood lights)
- Steady-burn with dim function (spot and flood lights only)

| | | | |
|------------------------------|---|--|-------------------------------------|
| INPUT VOLTAGE RANGE | 9-32 Vdc | | |
| CURRENT DRAW | <1.0 Amp @ 12.8 Vdc, <0.5 Amp @ 25.6 Vdc | | |
| LIGHT SYNC | 24 single sync 2 lightheads | | |
| FLASH PATTERNS | 12 Single, 14 Dual or 14 Tricolor patterns (does not include spot and flood lights) | | |
| OPERATING TEMPERATURE | -40° C to +65° C | | |
| DIMENSIONS | 3 Inch Stud | 4 Inch Stud | HD |
| Length | 3.04" (7.72 cm) | 4.04" (10.3 cm) | 4.25" (10.8 cm) |
| Height | 0.92" (2.3 cm) | 0.92" (2.3 cm) | 0.92" (2.3 cm) |
| Depth | 0.42" (1 cm) (from mounting surface) | 0.42" (1 cm) (from mounting surface) | 6" (1.5 cm) (from mounting surface) |
| | 3 Inch Quick | 4 Inch Quick | |
| Length | 3.04" (7.72 cm) | 4.04" (10.3 cm) | |
| Height | 0.92" (2.3 cm) | 0.92" (2.3 cm) | |
| Depth | 0.47" (1.2 cm) (from mounting surface) | 0.47" (1.2 cm) (from mounting surface) | |
| | 3 Inch Screw | 4 Inch Screw | |
| Length | 3.52" (8.94 cm) | 4.52" (11.4 cm) | |
| Height | 0.92" (2.3 cm) | 0.92" (2.3 cm) | |
| Depth | 0.42" (1 cm) (from mounting surface) | 0.42" (1 cm) (from mounting surface) | |
| CERTIFICATIONS | SAE J595 Class 1 certified SAE J845 Class 1 certified CA Title 13, Article 22 compliant EMC R10.05 (HD light only) | | |
| WARRANTY | Five-year | | |

ACCESSORIES

Refer to the following pages. Lights sold separately.

BRACKETS

| | | |
|----------------------------------|----------------------------|-------------|
| License Plate, Stud Mount | Vertical mount, three inch | PMP1BRK2LPV |
| | Vertical mount, four inch | PMP2BRK2LPV |

BRACKET KITS

Rear Spoiler, Stud Mounts

| | | |
|--------------|---|------------|
| Chevy | Tahoe, 2015-2020 | |
| | Three lights per passenger and driver side | PMP2RSBTH3 |
| | Four lights per passenger and driver side | PMP2RSBTH4 |
| Ford | PI Utility, 2015-2019 | |
| | One light per driver and passenger side, four inch | PMP2RSBUV1 |
| | Two lights per driver and passenger side, four inch | PMP2RSBUV2 |
| | Three lights per driver and passenger side, four inch | PMP2RSBUV3 |
| | Four lights per driver and passenger side, four inch | PMP2RSBUV4 |
| | PI Utility, 2020 | |
| | One light per driver and passenger side, four inch | PMP2RS101 |
| | Two lights per driver and passenger side, four inch | PMP2RS201 |
| | Three lights per driver and passenger side, four inch | PMP2RS301 |
| | Four lights per driver and passenger side, four inch | PMP2RS401 |

| | | |
|------------------------------|---|------------|
| Rock Mount, Universal | Stud mount and HD light, four inch (includes mounting hardware) | PMP4BKRKLB |
|------------------------------|---|------------|

Under Mirror Mounts

| | | |
|--------------|---|--------------|
| Chevy | Silverado, 2018 and 2019 | |
| | Stud and quick mount, three inch | PMP1BKUMB2 |
| | Tahoe, 2016-2019 | |
| | Stud and quick mount, three inch | PMP1BKUMB3 |
| | Stud and quick mount, driver side, three and four inch | PNT3BKUMB3-D |
| | Stud and quick mount, passenger side, three and four inch | PNT3BKUMB3-P |
| GMC | Sierra, 2018 and 2019 | |
| | Stud and quick mount, three inch | PMP1BKUMB2 |
| Dodge | Durango, 2016-2019 | |
| | Stud and quick mount, three and four inch | PNT3BKUMB4 |
| | Dodge Durango, 2018 and 2019 | |
| | Stud and quick mount, three inch | PMP1BKUMB1 |
| | Ram, 2014-2018 | |
| | Stud and quick mount, driver side, three and four inch | PNT3BKUMB2-D |
| | Stud and quick mount, passenger side, three and four inch | PNT3BKUMB2-P |
| | <i>Not compatible with towing mirrors.</i> | |
| Ford | Expedition, 2018 and 2019 | |
| | Stud and quick mount, three inch | PMP1BKUMB1 |
| | F-150, 2015-2018 | |
| | Stud and quick mount, driver side, three and four inch | PMP2BKUMB2-D |
| | Stud and quick mount, passenger side, three and four inch | PMP2BKUMB2-P |
| | PI Utility, 2016-2019 | |
| | Stud and quick mount, three inch | PMP1BKUMB1 |
| | Stud and quick mount, four inch | PMP2BKUMB1 |

mpower ACCESSORIES

Lights and replacement modules sold separately.

FRAMES

| | | |
|---------------|---------------------------|-------------|
| License Plate | 4 inch, quick mount light | PMP2BRK2LPF |
|---------------|---------------------------|-------------|

WEDGES

Quick Mounts

Three Inch

| | |
|-------------------|------------|
| Black, 5 degrees | PMP1WDG05B |
| Black, 15 degrees | PMP1WDG15B |
| Black, 35 degrees | PMP1WDG35B |
| White, 5 degrees | PMP1WDG05W |
| White, 15 degrees | PMP1WDG15W |
| White, 35 degrees | PMP1WDG35W |

Four Inch

| | |
|-------------------|------------|
| Black, 5 degrees | PMP2WDG05B |
| Black, 15 degrees | PMP2WDG15B |
| Black, 35 degrees | PMP2WDG35B |
| White, 5 degrees | PMP2WDG05W |
| White, 15 degrees | PMP2WDG15W |
| White, 30 degrees | PMP2WDG35W |

Includes wedge and 3M VHB adhesive

WINDSHIELD SHROUDS

Adjustable 25 to 90 Degrees

Single

| | |
|-------------------|-----------|
| Three inch, black | PMP1WSSSB |
| Three inch, white | PMP1WSSSW |
| Four inch, black | PMP2WSSSB |
| Four inch, white | PMP2WSSSW |

Dual

| | |
|---------------|-----------|
| 3 inch, black | PMP1WSddb |
| 3 inch, white | PMP1WSDDW |
| 4 inch, black | PMP2WSddb |
| 4 inch, white | PMP2WSDDW |

FASCIA MOUNTING OPTIONS

Quick Clip Mount

Quick Clip Bracket

| | |
|---------------|------------|
| 3 inch, black | PMP1BKQCLP |
| 4 inch, black | PMP2BKQCLP |

Stud Mount

90 Degree Adjustable Mount Bracket

| | |
|---------------|--------------|
| 3 inch, black | PMP1BKDGAJ |
| 3 inch, white | PMP1BKDGAJ-W |
| 4 inch, black | PMP2BKDGAJ |
| 4 inch, white | PMP2BKDGAJ-W |

Stud Mount

90 Degree Adjustable Edge Mount Bracket

| | |
|---------------|--------------|
| 3 inch, black | PMP1BKEDGE |
| 3 inch, white | PMP1BKEDGE-W |
| 4 inch, black | PMP2BKEDGE |
| 4 inch, white | PMP2BKEDGE-W |

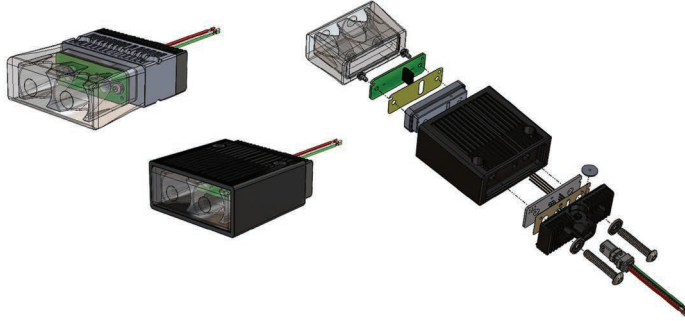


Perimeter White Lights

Coming Soon!

2x1 Inch, Silicone

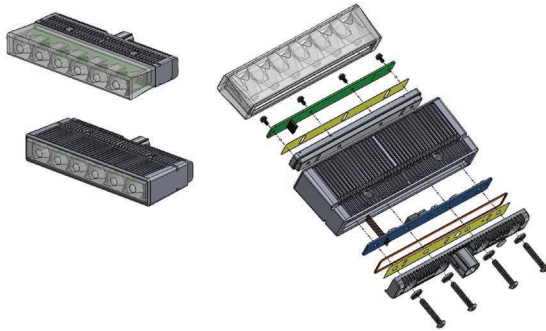
White LEDs



| | |
|--------------------------|--------|
| LUMENS PER LAMP | 1440 |
| PEAK BEAM INTENSITY (CD) | 23,000 |
| LEDS PER LAMP | 2 |
| WATTS PER LAMP | 15.5 W |
| 5 DEGREE SPOT | |
| COLOR | Black |
| IP | IPX7 |

6x1 Inch, Silicone

White LEDs



| | |
|--------------------------|--------|
| LUMENS PER LAMP | 4320 |
| PEAK BEAM INTENSITY (CD) | 69,000 |
| LEDS PER LAMP | 6 |
| WATTS PER LAMP | 45 W |
| 5 DEGREE SPOT | |
| COLOR | Black |
| IP | IPX7 |

Features

- Industry-first optical grade silicone high power spot lens
- A smaller footprint with maximized candela output
- Greater resistance to gravel pitting, scratching or cracking
- Improved sealing to prevent water from entering light
- Higher UV and thermal stability to prevent lens from yellowing over time
- Won't crack in harsh environments

Contact your sales representative for additional information.

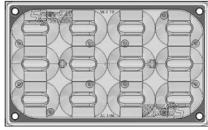
Fire/EMS Lights

Warning, Stop/Tail/Turn and Reverse Functionality Available

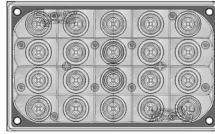
Coming Soon!

6x4 Inch Silicone and Polycarb Lens

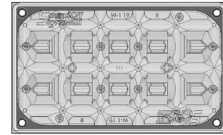
Warning



Stop/Tail/Turn

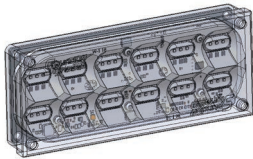


Reverse

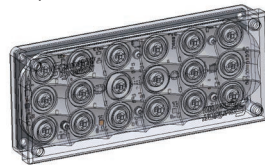


7x3 Inch Silicone and Polycarb Lens

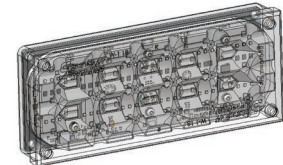
Warning



Stop/Tail/Turn



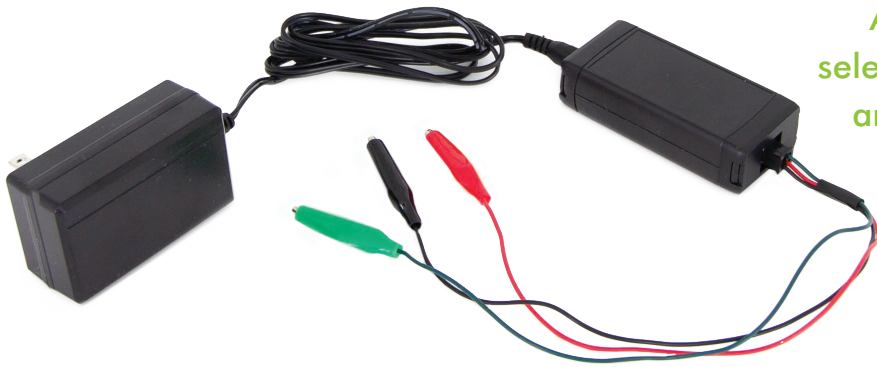
Reverse



7x3 Inch Warning Light

ConfigureIT App

Allows you to configure select 5-wire lights via an app and Bluetooth connection



Features

- Reduces Install time
- Eliminates tapping of wires
- App available in Apple Store and Google Play
- Save configurations for repetitive lights for multiple / reused configurations
- Simple User Interface – no training required
- Supported by world-class technical support

Bluetooth module, power plug and alligator clips **ECTBM001**

App is available for free via your preferred app store

ConfigureIT Bluetooth Module Directions for Use

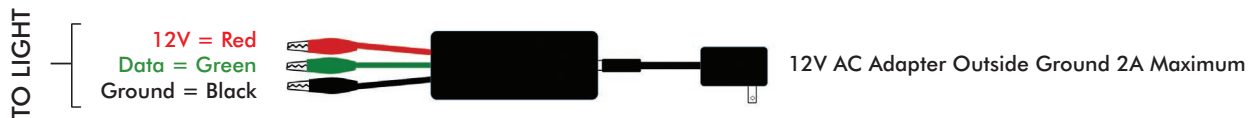
1. Download the “SoundOff Signal” app on your handheld device. App is available via Google Play and the App Store.



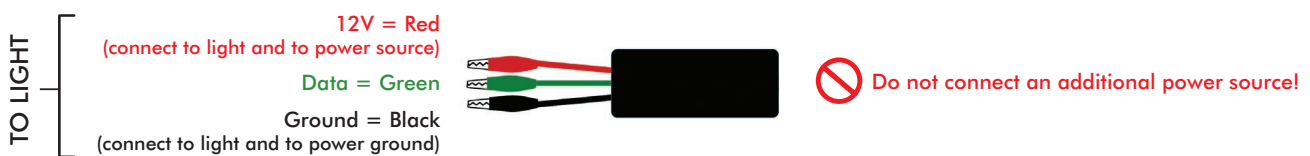
2. Connect your perimeter light to the ConfigureIT Bluetooth module. See connection diagrams below.
3. Scan and connect via the ConfigureIT app.
4. Begin configuring your light.

ConfigureIT Bluetooth Module Connections

OPTION 1: Light Powered Through Bluetooth Module



OPTION 2: Bluetooth Module Powered with Light





Surface, Deck/Grille and Recess Mount Lights

Surface Mounts



Single Mount

- 6 LED, Single or Split Colors
- 9 LED, Single Color
- 9 LED, Single Color, Amber, High Output
- 9 LED, Single Color, 10-30 Vdc, Xylex Lens
- 12 LED, Single or Dual Colors
- 18 LED, Tricolor

- ENFSSS1(x)
- ENFSSS2(x)
- ENFSSS2A-PC
- ENFSSE2(x)
- ENFSSS3(x)
- ENFSSS4(xxx)



Dual Stacked Mount

- 6 LED, Single or Split Colors
- 9 LED, Single Color
- 9 LED, Single Color, Amber/Amber, High Output
- 9 LED, Single Color, 10-30 Vdc, Xylex Lens
- 12 LED, Single or Dual Colors
- 18 LED, Tricolor

- ENFDSS1(xx)
- ENFDSS2(xx)
- ENFDSS2AA-PC
- ENFDSE2(xx)
- ENFDSS3(xx)
- ENFDSS4(xxx)

Deck/Grille Mounts



Single Mount

- 6 LED, Single or Split Colors
- 9 LED, Single Color
- 9 LED, Single Color, Amber, High Output
- 9 LED, Single Color, 10-30 Vdc, Xylex Lens
- 12 LED, Single or Dual Colors
- 18 LED, Tricolor

- ENFSGS1(x)
- ENFSGS2(x)
- ENFSGS2A-PC
- ENFSGE2(x)
- ENFSGS3(x)
- ENFSGS4(xxx)



Dual Side-by-Side Mount

- 6 LED, Single or Split Colors
- 9 LED, Single Color
- 9 LED, Single Color, Amber/Amber, High Output
- 9 LED, Single Color, 10-30 Vdc, Xylex Lens
- 12 LED, Single or Dual Colors
- 18 LED, Tricolor

- ENFDGS1(xx)
- ENFDGS2(xx)
- ENFDGS2AA-PC
- ENFDGS2AA-PC
- ENFDGS3(xx)
- ENFDGS4(xxx)

Recess Mount



Recess Mount

- 6 LED, Single or Split Colors
- 9 LED, Single Color
- 9 LED, Single Color, 10-30 Vdc, Xylex Lens
- 12 LED, Single or Dual Colors
- 18 LED, Tricolor

- ENFSRS1(x)
- ENFSRS2(x)
- ENFSRE2(x)
- ENFSRS3(x)
- ENFSRS4(xxx)



Six Inch Oval Recess Mount

- 6 LED, Single or Split Colors
- 9 LED, Single Color
- 9 LED, Single Color, Amber, High Output
- 12 LED, Single or Dual Colors

- ENFSRV1(x)
- ENFSRV2(x)
- ENFSRV2A-PC
- ENFSRV3(x)



Windshield Mount Lights

Windshield Mounts



Single, Stacked Mount

Includes shroud, bracket and bare wires

| | |
|---|---------------------|
| 6 LED, Single or Dual Colors | ENFSWP1(x) |
| 9 LED, Single Color | ENFSWP2(x) |
| 9 LED, Single Color, Amber, High Output | ENFSWP2A-PC |
| 12 LED, Single or Dual Colors | ENFSWP3(x) |
| 18 LED, Tricolor | ENFSWP4(xxx) |

Single, Suction Cup Mount

Includes shroud, bracket and 12 volt cig plug with 11.5' cord

| | |
|---|---------------------|
| 6 LED, Single or Split Colors | ENFSWS1(x) |
| 9 LED, Single Color | ENFSWS2(x) |
| 9 LED, Single Color, Amber, High Output | ENFSWS2A-PC |
| 12 LED, Single or Dual Colors | ENFSWS3(x) |
| 18 LED, Tricolor | ENFSWS4(xxx) |



Dual Side-by-Side, Permanent Mount

Includes shroud, bracket and bare wires

| | |
|---|---------------------|
| 6 LED, Single or Dual Colors | ENFDWP1(xx) |
| 9 LED, Single Color | ENFDWP2(xx) |
| 9 LED, Single Color, Amber/Amber, High Output | ENFDWP2AA-PC |
| 12 LED, Single or Dual Colors | ENFDWP3(xx) |
| 18 LED, Tricolor | ENFDWP4(xxx) |

Dual Side-by-Side, Suction Cup Mount

Includes shroud, bracket and 12 volt cig plug with 11.5' cord

| | |
|---|---------------------|
| 6 LED, Single or Dual Colors | ENFDWS1(xx) |
| 9 LED, Single Color | ENFDWS2(xx) |
| 9 LED, Single Color, Amber/Amber, High Output | ENDWS2AA-PC |
| 12 LED, Single or Dual Colors | ENDWS3(xx) |
| 18 LED, Tricolor | ENFDWS4(xxx) |

Features

Surface, Deck/Grille, Recess, Six Inch Oval Recess and Windshield Mounts

- Single, split, dual or tricolor capability (tricolor is not available for the six inch oval recess mount)
- 6, 9, 12 or 18 LED counts (18 LED count is not available for the six inch oval recess mount)
- Steady-burn white capability
- ECE R65 certified (surface, deck/grille and recess mounts only)
- Secondary function can be either flashig or steady-burn (six inch oval recess mount only)

nFORCE Surface, Deck/Grille, Recess and Windshield Mount Lights

Surface, Deck/Grille, Recess, Six Inch Oval Recess and Windshield Mounts

Replace (x), (xx) or (xxx) in the Order Number for Standard Color Selection

| | | |
|------------------------------|-----------------------------|---|
| 6, 9 or 12 LED Single Colors | A = ● B = ● R = ● W = ○ | Six Inch Oval Recess Mount: A = ● W = ○ |
| 6 LED Split Color | J = ●● | Six Inch Oval Recess Mount: D = ●○ F = ●○ |
| 12 LED Dual Colors | D = ●○ E = ●○ F = ●○ J = ●● | Six Inch Oval Recess Mount: D = ●○ F = ●○ |
| 18 LED Tricolors | BRA = ●●● BRW = ●●○ | Six Inch Oval Recess Mount: Not available |

● ● ● ○ To order configured products, contact your sales representative or customer service department.

| | | | |
|---|---|--|------------------|
| INPUT VOLTAGE RANGE | 10-16 Vdc standard or 10-30 Vdc (configurable option) | | |
| CURRENT DRAW PER MODULE | 10-16 VDC | 10-30 VDC (configurable option) | |
| 6 LED Single Color | <1.0 Amp @ 12.8 Vdc | <0.6 Amp @ 25.6 Vdc | |
| 6 LED Split Color | <1.0 Amp @ 12.8 Vdc | <0.6 Amp @ 25.6 Vdc | |
| 9 LED Single Color | <1.5 Amp @ 12.8 Vdc | <0.9 Amp @ 25.6 Vdc | |
| 12 LED Single Color | <2.0 Amp @ 12.8 Vdc | <1.2 Amp @ 25.6 Vdc | |
| 12 LED Dual Color | <1.0 Amp @ 12.8 Vdc | <0.6 Amp @ 25.6 Vdc | |
| 18 LED Tricolor | <1.0 Amp @ 12.8 Vdc | <0.6 Amp @ 25.6 Vdc (tricolor is not available for the six inch oval recess mount) | |
| LIGHT SYNC | 24 single sync 2 lighthead | | |
| FLASH PATTERNS | 12 single, 14 dual or 14 tricolor patterns (tricolor is not available for the six inch oval recess mount) | | |
| OPERATING TEMPERATURE | -40° C to +65° C / -40° F to +149° F | | |
| DIMENSIONS | | | |
| Surface Mount, Single | | Recess Mount | |
| Length | 5.0" (12.7 cm) | Length | 5.25" (13.34 cm) |
| Height | 1.72" (4.3 cm) | Height | 2.25" (5.72 cm) |
| Depth | 1.50" (3.8 cm) | Depth | 1.50" (3.8 cm) |
| Surface Mount, Dual Stacked | | Windshield Mount, Single | |
| Length | 5.0" (12.7 cm) | Length | 6.80" (17.27cm) |
| Height | 3.13" (7.9 cm) | Height | 1.43" (3.6 cm) |
| Depth | 1.5" (3.8 cm) | Depth | 1.43" (3.6 cm) |
| Deck/Grille Mount, Single | | Windshield Mount, Dual Side-by-Side | |
| Length | 5.0" (12.7 cm) | Length | 11.35" (28.8 cm) |
| Height | 1.88" (4.7 cm) | Height | 1.43" (3.6 cm) |
| Depth | 1.82 (4.3 cm) | Depth | 5" (12.7 cm) |
| Deck/Grille Mount, Dual Side-by-Side | | | |
| Length | 9.50" (24.1 cm) | | |
| Height | 1.88" (4.7 cm) | | |
| Depth | 1.82" (4.3 cm) | | |
| CERTIFICATIONS | SAE J595, Class 1 certified and CA Title 13, Article 22 compliant EMC 72/245/EEC certified and ECE R65 Category X, Class 2 certified (ECE R65 can only be specified with 9 LED single color) (surface, deck/grille and recess mounts only) | | |
| WINDSHIELD MOUNT | SAE J595, Class 1 certified (not amber) and CA Title 13, Article 22 compliant EMC 72/245/EEC certified | | |
| WARRANTY | Five-year | | |

ACCESSORIES

Refer to following page. Lights sold separately.

Surface and Deck/Grille Mount Lights

Lights and replacement modules sold separately.

| BRACKETS | | |
|---------------------------------|---|------------------------------|
| License Plate, Surface Mount | Horizontal mount Vertical mount | PNFSLBRK2LPH PNFSLBRK2LPV |
| Rear Spoiler, Surface Mounts | | |
| Chevy | Tahoe, 2015-2017 Rear spoiler, single | PNFSLRSBUVS |
| Ford | PI Utility, 2011-2017 Dual, driver side Dual, passenger side | PNFSLRSBUVD PNFSLRSBUVP |
| | PI Utility, 2011-2017 Dual, passenger/driver sides | PNFSLRSBTH |
| 45 Degree Angle, Surface Mount | Ford PI Utility, 2011-2017 Horizontal mount | PNFSLBRK145 |
| 90 Degree Angle, Surface Mounts | Horizontal mount | PNFSLBRK190 |
| | Chevy Tahoe, 2015-2017 Behind grille, passenger/driver sides | PNFSLDGSB-TH |
| Deck/Grille Mount | Single Dual | PNFSLDGSB PNFSLDGDB |
| FOG LIGHT KIT | | |
| Surface Mount | | |
| Chevy | Tahoe, 2015-2017 Passenger/driver fog light bezels, mounting plates and hardware | PNFSLFLKTH |

Bolt 2 Surface Mount Light



9 LED, Single Colors
 18 LED, Dual Colors
 18 LED, Dual Color, Red/Blue,
 ECE R65 Category X Class 2 and ECE R10 Certified
 18 LED, Dual Color, Blue/Amber,
 ECE R65 Category X Class 2 and ECE R10 Certified

E1XS2SME5(x)X
 E1XS2SME5(xx)
 DE2-E1XS2SMF5RB

DE2-E1XS2SMF5BA

Replace (x) or (xx) in the Order Number for Standard Color Selection

9 LED Single Colors A = ● B = ● G = ● R = ● W = ○

18 LED Dual Colors AW = ●○ BA = ●● BW = ●○ GA = ●● RA = ●● RB = ●● RW = ●○

Feature

- Bright, high-performing light in compact, versatile design

| | |
|-------------------------|--|
| INPUT VOLTAGE | 10-30 Vdc |
| CURRENT DRAW @ 12.8 VDC | 1.1 Amps |
| FLASH PATTERNS | 8 |
| OPERATING TEMPERATURE | -40° C to +65° C |
| LED COUNT | Single color, 9 LEDs or dual colors, 18 LEDs |
| DIMENSIONS | Length 5.5" (140 mm) (14 cm) Height 1.6" (41 mm) (4.1 cm) Depth 0.48" (12.2 mm) (1.22 cm) |
| CERTIFICATIONS | SAE J845 Class 1 certified (amber, blue, red and white) and CA title 13 Table 1 Class B certified (amber, blue, red and white) ECE R65 Category X Class 2 and ECE R10 certified (amber, blue and red) |
| WARRANTY | Three-year |

Fusion Lite Surface Mount Light



Solid Colors EFL1B0(x)
 Dual Color, Red/Blue EFL2B0J
 Dual Color, Amber/White EFL2B0F

Replace (x) in the Order Number for Standard Color Selection

Solid Colors A = ● B = ● R = ● W = ○

Feature

- Fusion II technology - optic for a bright, extra wide output

| | |
|-----------------------|--|
| INPUT VOLTAGE | 10-30 Vdc |
| CURRENT DRAW | <.5 Amp @ 12.8 Vdc, <0.75 Amp @ 25.6 Vdc |
| LIGHT SYNC | 6 single fusion lighthoods |
| FLASH PATTERNS | 6 flash patterns |
| LED COUNT | Solid colors, 1 LED or dual colors, 2 LEDs |
| OPERATING TEMPERATURE | -20° C to +65° C |
| DIMENSIONS | Length 3.2" (8 cm) Height .8" (2 cm) Depth 1.7" (4.2 cm) |
| CERTIFICATIONS | RoHS, WEEE compliant and meets SAE J845 Class 3 requirements |
| WARRANTY | Five-year |



Under Mirror and Surface Mount Lights

Under Mirror Mount



| | |
|---------------------------------|--------------|
| 8 LED, Single Color | ENT2B3(x) |
| 8 LED, Single Color, Xylex Lens | ENT2B3(x)-EU |
| 16 LED, Dual Color | ENT2B3(y) |
| 16 LED, Dual Color, Xylex Lens | ENT2B3(y)-EU |
| 18 LED, Tricolor | ENT2B3(xxx) |

Under Mirror Mount



| | |
|-------------------------------------|-------------|
| 8 LED, Single Color, Black Housing | ENT3B3(x) |
| 8 LED, Single Color, Chrome Housing | ENT3C3(x) |
| 8 LED, Single Color, White Housing | ENT3W3(x) |
| 16 LED, Dual Color, Black Housing | ENT3B3(y) |
| 16 LED, Dual Color, Chrome Housing | ENT3C3(y) |
| 16 LED, Dual Color, White Housing | ENT3W3(y) |
| 18 LED, Tricolor, Black Housing | ENT3B3(xxx) |
| 18 LED, Tricolor, Chrome Housing | ENT3C3(xxx) |
| 18 LED, Tricolor, White Housing | ENT3W3(xxx) |

Replace (x), (y) or (xxx) in the Order Number for Standard Color Selection

| | |
|-------------------------|--|
| 8 LED Single Colors (x) | A = ● B = ● G = ● R = ● W = ○ |
| 16 LED Dual Colors (y) | D = ●○ E = ●○ F = ●○ J = ●● K = ●● L = ●● M = ●● N = ●● P = ●● |
| 18 LED Tricolors (xxx) | BAG = ●●● BAW = ●●○ BGW = ●●○ GAW = ●●○ RAG = ●●● RAW = ●●○ RBA = ●●● RBW = ●●○ RBG = ●●● RGW = ●●○ |

Features: Under Mirror Mount

- Light includes 0, 5, 10 and 15 degree mounting wedges and foam gasket
- The first light of its kind to offer critical intersection warning and side warning
- Light is based upon problem solving research - 30% of all emergency vehicle crashes are likely to occur at dangerous intersections
- Unique under-mirror mount simplifies installation - labor saving light is much easier to install than traditional front mirror skull mounts - no mirrors to work behind or around
- Light can be surface mounted to any flat area on any type of vehicle - elevate your safety and visibility by mounting to the headache rack or body of the vehicle wherever additional lighting is needed
- Features cruise mode for steady burn if desired
- Steady-burn white can be specified as a means of providing additional side/alley lighting

Features: Surface Mount

- No other light offers 180 degree output - specially designed reflector amplifies and throws the light at the perfect angle to increase visibility at intersections
- Includes surface mount light in your choice of LED and housing colors, neoprene gasket and mounting hardware for installation
- Patented design, the first light of its kind to offer critical intersection warning and side warning illumination now available with surface mount capabilities

| | |
|------------------------------|--|
| INPUT VOLTAGE | 9-32 Vdc |
| CURRENT DRAW | 8 LED Single Color, <1.3 Amp @ 12.8 Vdc, <0.65 Amp @ 25.6 Vdc 16 LED Dual Color, <1.3 Amp @ 12.8 Vdc, <0.65 Amp @ 25.6 Vdc 18 LED Tricolor, <1.0 Amp @ 12.8 Vdc, <0.5 Amp @ 25.6 Vdc |
| LIGHT SYNC | 24 single sync 2 lighthead |
| FLASH PATTERNS | 12 single, 14 dual or 14 tricolor |
| OPERATING TEMPERATURE | -40° C to +65° C / -40° F to +149° F |
| DIMENSIONS | |
| Length | 2.9" (7.4 cm) |
| Height | 1.9" (4.8 cm) |
| Depth | 2.9" (7.4 cm) |
| MOUNTING | Under mirror or surface mount |
| CERTIFICATIONS | SAE J845 Class 1 WS3-1 (100) certified (green is class 3 certified) ECE R10.05 certified |
| WARRANTY | Five-year |

ACCESSORIES

Lights sold separately.

BRACKETS

| | | |
|--|--------------------|-------------|
| Surface Mounts | Chevrolet Tahoe | PNT3DGBB-TH |
| | Deck/Grille mount | PNT3DGBB |
| Under Mirror Installation Mount | Bracket and screws | PNT1WRRT |

BRACKET KITS

| | | | |
|----------------------------|--------------|--------------------------|--------------|
| Under Mirror Mounts | Chevy | Tahoe, 2016-2019 | |
| | | Surface mount, driver | PNT3BKUMB3-D |
| | | Surface mount, passenger | PNT3BKUMB3-P |
| | Dodge | Durango, 2016-2019 | PNT3BKUMB4 |
| | Ford | PI Utility, 2016-2019 | PMP2BKUMB1 |

SURFACE ADAPTORS

| | | | |
|-----------------------------|------------------|----------------------|-----------|
| Under Mirror, Curved | | Sold in pairs. | |
| | | Universal | PNT1CRV01 |
| | Chevrolet | Caprice, 2011- 2017 | PNT1CRV02 |
| | Dodge | Charger, 2011- 2017 | PNT1CRV03 |
| | | Durango, 2013- 2017 | PNT1CRV06 |
| | Ford | Explorer, 2013- 2017 | PNT1CRV05 |
| | | Sedan, 2013- 2017 | PNT1CRV04 |

GHØST

Surface, Deck/Grille and Recess Mount Lights

Surface Mounts



Single Mount

- Black Housing, 10-16 Vdc
- Chrome Housing, 10-16 Vdc
- White Housing, 10-16 Vdc
- Black Housing, 10-30 Vdc
- Chrome Housing, 10-30 Vdc
- White Housing, 10-30 Vdc
- Black Housing, 10-16 Vdc, ECE R65 Certified, Xylex Lens
- Chrome Housing, 10-16 Vdc, ECE R65 Certified, Xylex Lens
- White Housing, 10-16 Vdc, ECE R65 Certified, Xylex Lens
- Black Housing, 10-30 Vdc, ECE R65/EMC Certified
- Chrome Housing, 10-30 Vdc, ECE R65/EMC Certified
- White Housing, 10-30 Vdc, ECE R65/EMC Certified

- EGHST2(x)-12
- EGHST2(x)C-12
- EGHST2(x)W-12
- EGHST2(x)
- EGHST2(x)C
- EGHST2(x)W
- EGHSTE2(x)B-EU
- EGHSTE2(x)C-EU
- EGHSTE2(x)W-EU
- EGHSTE2(x)B
- EGHSTE2(x)C
- EGHSTE2(x)W

Amber, blue or red LED solid color options only on certified lights



Single Stop/Tail Mount

- Black Housing, 10-30 Vdc
- Black Housing, 10-30 Vdc
- Chrome Housing, 10-30 Vdc
- White Housing, 10-30 Vdc
- White Housing, 10-30 Vdc

- EGHSTT2(x)B
- EGHSTT2(x)B
- EGHSTT2(x)C
- EGHSTT2(x)W
- EGHSTT2(x)W



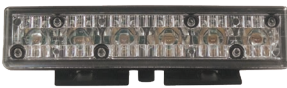
Single Spot Mount

- Black Housing, 10-30 Vdc
- Chrome Housing, 10-30 Vdc
- White Housing, 10-30 Vdc

- EGHSTS2W
- EGHSTS2WC
- EGHSTS2WW

White LED, solid color

Deck/Grille Mounts



Single Multi-Mount

- Black Housing, 10-16 Vdc
- White Housing, 10-16 Vdc
- Black Housing, 10-30 Vdc
- White Housing, 10-30 Vdc
- Black Housing, 10-16 Vdc, ECE 65/EMC Certified
- White Housing, 10-16 Vdc, ECE 65/EMC Certified
- Black Housing, Xylex Lens
- White Housing, Xylex Lens

- EGHST1(x)-12
- EGHST1(x)W-12
- EGHST1(x)
- EGHST1(x)W
- EGHSTE1(x)B
- EGHSTE1(x)W
- EGHSTE1(x)B-EU
- EGHSTE1(x)W-EU

Amber, blue or red LED solid color options only on xylex lens lights

Single Stop/Tail Multi Mount

- Black Housing, 10-16 Vdc
- White Housing, 10-16 Vdc

- EGHSTTR
- EGHSTTRW

Red LED, solid color

Single Spot Mount

- Black Housing, 10-30 Vdc
- White Housing, 10-30 Vdc

- EGHSTS1W
- EGHSTS1WW

White LED, solid color

GHOST Recess Mount Lights

Recess Mounts



Single Mount

- Black Housing, 10-16 Vdc
- Chrome Housing, 10-16 Vdc
- Black Housing, 10-30 Vdc
- Chrome Housing, 10-30 Vdc
- Black Housing, 10-30 Vdc, ECE R65/EMC Certified, Xylex Lens
- Chrome Housing, 10-30 Vdc, ECE R65/EMC Certified, Xylex Lens
- Black Housing, 10-30 Vdc, ECE R65/EMC Certified
- Chrome Housing, 10-30 Vdc, ECE R65/EMC Certified

Amber, blue or red LED solid color options only on certified lights

- EGHST5(x)B-12
- EGHST5(x)C-12
- EGHST5(x)B
- EGHST5(x)C
- EGHSTE5(x)B-EU
- EGHSTE5(x)C-EU
- EGHSTE5(x)B
- EGHSTE5(x)C

Single Stop/Tail Mount

- Black Housing, 10-30 Vdc **EGHSTT5(x)B**
- Chrome Housing, 10-30 Vdc **EGHSTT5(x)C**

Single Spot Mount

- Black Housing, 10-30 Vdc **EGHSTS2WB**
 - Chrome Housing, 10-30 Vdc **EGHSTS2WC**
- White LED, solid color

Replace (x) in the Order Number for Standard Color Selection

| | | | | | | | | | | | | | |
|---------------------|-------|--------|-------|-------|-------|--------|--------|--------|--------|--------|--------|--------|--------|
| Solid Colors | A = ● | B = ● | G = ● | R = ● | W = ○ | | | | | | | | |
| Split Colors | A = ● | B = ● | G = ● | R = ● | W = ○ | D = ●○ | E = ●○ | F = ●○ | J = ●● | K = ●● | L = ●● | M = ●● | N = ●● |
| | | P = ●● | | | | | | | | | | | |

Features

- Fits almost anywhere with premium optics offer optimal power and brightness
- Premium optics offer optimal power and brightness

| | |
|------------------------------|--|
| INPUT VOLTAGE | 10-16 Vdc or 10-30 Vdc |
| CURRENT DRAW | <0.75 Amp (flash pattern dependent) |
| LIGHT SYNC | 4 single sync, 1 lighthouse |
| FLASH PATTERNS | 33 flash patterns |
| LED COUNT | 6 LEDs |
| OPERATING TEMPERATURE | -40° C to +65° C / -40° F to +149° F |
| DIMENSIONS | <p>Single Multi, Single Stop Tail Multi, Single Spot or Rock</p> <p>Length: 5.7" (14 cm) Height: 1.06" (2.7 cm) Depth: 1.8" (4.6 cm)</p> <p>Length: 5.4" (14 cm) Height: 2.4" (6.1 cm) Depth: 1" (2.5 cm)</p> |
| MOUNTING | <p>Multi: Includes three mounting options; permanent, single edge and 3M adhesive mounts 4" (10 cm) L x 0.9" (2.3 cm) H x 1.8" (4.6 cm) D</p> <p>Rock: 4.8" (12 cm) L x 2" (5.1 cm) H x 1.6" (4.1 cm) D</p> <p>Stop/Tail Multi: Includes two mounting options; permanent and 3M adhesive mounts</p> |
| CERTIFICATIONS | <p>SAE J595 Class 1 certified</p> <p>CA Title 13, Article 22 compliant</p> <p>EMC certified, 72/245/EEC</p> <p>ECE 65, Category X, Class 1 certified</p> |
| WARRANTY | Five-year |

ACCESSORIES

Refer to following page.

GHOST Surface and Deck/Grille Mount ACCESSORIES

Lights and replacement modules sold separately.

BRACKETS

Single Surface Mount

| | | | |
|--------------|--------------------|--|------------------------------|
| Chevy | Tahoe, 2015 | Behind the grille installation, driver and passenger side Vertical license plate installation | PNFSLDGSB-TH PNFSLBRK2LPV |
|--------------|--------------------|--|------------------------------|

Single Deck/Grille Mount Bracket

| | | | |
|--------------|--------------------|--|--------------|
| Chevy | Tahoe, 2015 | Front deck/grille, driver and passenger side | PGHSTDGSB-TH |
|--------------|--------------------|--|--------------|

BRACKET KIT

| | | |
|-----------------------------|---|------------|
| Universal Rock Mount | Deck/Grille (includes mounting hardware) Can also be used with the mpower® four inch stud mount and HD light | PMP4BKRKLB |
|-----------------------------|---|------------|

ML6 Flush Mount Light



| | |
|---------------|--------------------|
| Single Colors | EML6E20(x) |
| Dual Colors | EML6E20(xx) |

Replace (x) or (xx) in the Order Number for Standard Color Selection

| | |
|---------------|---|
| Single Colors | A = ● B = ● R = ● W = ○ |
| Dual Colors | AW = ●○ BA = ●● BW = ●○ GA = ●● RA = ●● RB = ●● RW = ●○ |

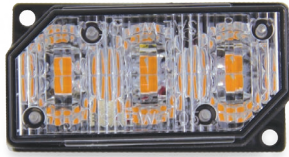
Features

- Compact, flush-mount emergency light to fit seamlessly into any vehicle design
- Features bright warning lights in both single and dual colors

| | |
|------------------------------|--|
| INPUT VOLTAGE | 10-30 Vdc |
| CURRENT DRAW | 1 Amp max @ 12.8 Vdc |
| LIGHT SYNC | ML6 lights |
| FLASH PATTERNS | Single: 19 or Dual: 14 |
| OPERATING TEMPERATURE | -30° C to +50° C |
| DIMENSIONS | |
| Height | 1.38" (3.5 cm) |
| Width | 1.38" (3.5 cm) |
| Depth | 1.18" (2.99 cm) |
| CERTIFICATIONS | SAE J595, Class 1 certified (single colors) and SAE J595, Class 2 certified (dual colors) ECE R65, Class 1, ECE R10.05 certified (amber, blue and red single colors), ECE R10.05 certified (white, single color) and ECE R10.05 certified (dual colors) |
| WARRANTY | Three-year |

LED3plus

Mini Surface Mount Light



Solid Colors
 Amber or Blue, ECE R10.05 and ECE 65 Certified
 Solid Colors, ECE R10.05 Certified

EL3PSN(x)
 EL3SN30(x)-EC
 EL3PSN(x)EC

Replace (x) in the Order Number for Standard Color Selection

Solid Colors A = ● B = ● G = ● R = ● W = ○

Features

- High powered, versatile mini surface mount with versatile mounting options, optional brackets and bezels for any vehicle and any mount
- Includes rubber mounting gasket and mounting hardware with 12 inches of 3-wire cable for hard wire installation

| | |
|-----------------------|---|
| INPUT VOLTAGE | 10-16 Vdc |
| CURRENT DRAW | <0.5 Amp @ 12.8 Vdc, <0.25 Amp @ 25.6 Vdc |
| LIGHT SYNC | 4 single sync, 1 lighthouse |
| FLASH PATTERNS | 33 flash patterns |
| LED COUNT | 6 LEDs |
| OPERATING TEMPERATURE | -40° C to +65° C / -40° F to +149° F |
| DIMENSIONS | Length 2.5" (6.4 cm) Height 1.4" (3.6 cm) Depth 1.25" (3.2 cm) |
| MOUNTING | 2.21" (5.6 cm) centers |
| CERTIFICATIONS | SAE J595 Class 1 certified and Article 22, CA Title 13 compliant (blue and red = 1 light and amber = 2 lights) ECE R10.05 and ECE 65 certified (refer to above part numbers) |
| WARRANTY | Five-year |

ACCESSORIES

Lights and replacement modules sold separately.

BEZELS

| | | |
|-------------|---|--------------------|
| Ford | PI Utility, 2011-2014 | PEL3FLBKFSU |
| | Four inch round | |
| | Dual Stacked | PEL3BZDS(x) |
| | Dual Side-by-Side | PEL3BZSS(x) |
| | Replace (x) in order number for housing color selection: B=Black C=Chrome W=White | |

BRACKETS

| | | |
|--------------------------------------|--------------------------------|---------------------|
| Surface Mounts | Universal grille | EL3SNBRK1GRU |
| | 45 degrees, vertical | EL3SNBRK145 |
| | 90 degrees | EL3SNBRK190 |
| | Side-by-side, 90 degrees | EL3SNBRK29ØH |
| | Stacked 90 degrees, horizontal | EL3SNBRK290V |
| | Stacked 90 degrees, vertical | EL3SNBRK290V |
| License Plate, Surface Mounts | Horizontal | EL3SNBRK2LPH |
| | Vertical | EL3SNBRK2LPV |

KIT

| | | |
|------------------------|--|--------------------|
| Fog Light, Ford | PI Utility, 2013 and newer | PEL3FLBKFSU |
| | (includes bracket and mounting hardware) | |

Universal UnderCover LED Insert



10 feet cable length
25 feet cable length

ELUC3H010(x)
ELUC3H025(x)

Replace (x) in the Order Number for Standard Color Selection

Solid Colors A = ● B = ● G = ● R = ● W = ○

Dual Colors D = ●○ E = ●○ F = ●○ H = ●○ J = ●● K = ●● L = ●● M = ●● N = ●● P = ●●

Features

- Features separate color control capability
- Secondary function can be flashing or steady burn
- Includes extreme angle lens, inline flasher and cable for hardwire installation
- Use with optional bezels to surface mount to any flat area on the vehicle body for additional lighting anywhere
- Compatible with the ConfigureIT system for easy light programming

| | | |
|--|---|--|
| INPUT VOLTAGE | 9-32 Vdc | |
| CURRENT DRAW | <.65 Amp (flash pattern dependent) @ 12.8 Vdc, <0.33 Amp @ 25.6 Vdc | |
| LIGHT SYNC | 24 single, sync 2 lighthead | |
| FLASH PATTERNS | 12 single color or 14 dual color | |
| LED COUNT | 6 LEDs | |
| OPERATING TEMPERATURE | -40° C to +65° C | |
| DIMENSIONS | | |
| Insert | Height .9" (2.3 cm) | Diameter 1.5" (3.8 cm) |
| Bezel | Height 1.65" (4.2 cm) | Diameter .63" (1.6 cm) Length 2.2" (5.6 cm) |
| MOUNTING | | |
| Headlight and taillight mounts into 1" diameter cutout | | |
| Screw-in surface mount with optional bezel | | |
| Bezel mounts on 1.89" (4.8 cm) centers | | |
| Twist-in or push-in options are also available | | |
| CERTIFICATION | ECE R10.05 certified | |
| WARRANTY | Five-year | |

ACCESSORIES

Lights and replacement modules sold separately.

BEZELS

| | |
|--|----------|
| Black (includes mounting gasket and hardware) | PLUC2HSB |
| Chrome (includes mounting gasket and hardware) | PLUC2HSC |
| White (includes mounting gasket and hardware) | PLUC2HSW |

LENS

| | | |
|---------------------------|---------------|-----------|
| Additional Options | Extreme angle | PLUC2LN1E |
| | Horizontal | PLUC2LN1H |
| | Vertical | PLUC2LN1V |

nLINE Bracket Mount Light



48 Inch Length Shown



- 48 Inches, 4 Modules per 12 Inches **ENL148(x)**
- 60 Inches, 5 Modules per 12 Inches **ENL160(x)**
- 72 Inches, 6 Modules per 12 Inches **ENL172(x)**

Replace (x) in the Order Number for Standard Color Selection

Solid Colors A = ● B = ● R = ●

Split Colors D = ●○ E = ●○ F = ●○ J = ●●

Features

- New and improved bracket mount with adjustable bracketry (straight and 60 degrees) included
- Prime applications include rocker panels, push bumpers, tailgates and headache racks
- Distributes exceptional profile visibility to dangerous intersections
- Compact extruded aluminum housing is visually inconspicuous and weather resistant
- 19 inches of wire cable for hard wire installation

| | |
|------------------------------|--|
| INPUT VOLTAGE | 10-16 Vdc |
| CURRENT DRAW | 0.3 Amp @ 12.8 Vdc per 12" module |
| LIGHT SYNC | 4 single nLINE lighthead |
| FLASH PATTERNS | 10 flash patterns |
| OPERATING TEMPERATURE | -40° C to +65° C / -40° F to +149° F |
| DIMENSIONS | |
| Widths | 48" (121.9 cm); 60" (152.4 cm) or 72" (182.9 cm) |
| Depth | 2.25" (5.7 cm) (all lights) |
| Height | .75" (1.9 cm) (all lights) |
| MOUNTING | Bracket mount with adjustable bracketry, straight and 60 degrees |
| WARRANTY | Three-year |

bluePRINT[®] 3 Control System



bluePRINT 2 and 3 Central Controller

bluePRINT 3 central controller requires the bluePRINT 3 app



Multi-Function Sirens Features

- Button or knob options available
- 100 or 200 watt options available
(two speakers required with 200 watt siren)



500 Series Siren

Coming Soon!

Refer to page 43 for additional information.

Dual-Tone Siren Features

- 100 or 200 watt options available

100 Watt Siren (sealed)



Take Total Control of Your Warning System!

To meet the challenges emergency vehicles face on today's roadways, SoundOff Signal has developed bluePRINT, the industry's most complete, most capable Intelligent Control System. Networked, programmable and logic-driven, bluePRINT enhances safety by automating emergency lighting and siren functions, reducing the need for operator input.

A bluePRINT-equipped vehicle is state-of-the-art and uses vehicle data and other inputs to inform and modify the warning system profile in real time. Agencies benefit with improved policy and law compliance, situation-specific warning profiles, automatic dimming and flash rate adjustments and diagnostics.

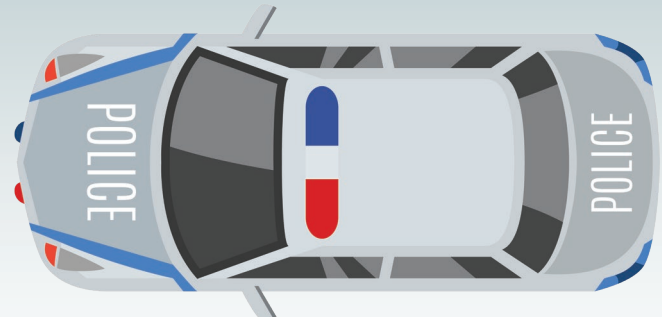
bluePRINT provides benefits for installers as well. Up fits become more standardized, reliability is improved and accessories like relays, diodes, timers and fuse blocks are often eliminated. bluePRINT's LINK, a plug-n-play CANbus interface, protects vehicle circuit integrity by eliminating the time and risk of modifying original vehicle wiring.

SoundOff lightbars integrate fully and easily into the system. Secondary lights become remote units, as the system will control their functions, including cruise, low power and flash patterns. Multi-color lights are fully controllable with bluePRINT. Accessories, like cameras, radios and radars, can be powered through bluePRINT to eliminate parasitic drains and provide load shed protection.



Remote Node

- ▶ Practically limitless customization
- ▶ Officer safety
- ▶ 82 outputs
- ▶ Link module provides access to vehicle data parameters



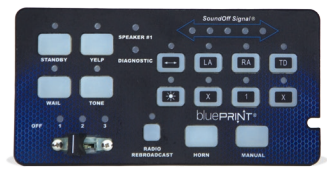
- ▶ Sync
- ▶ Up to 24 matrices
- ▶ Installation cost reduction
- ▶ Diagnostics
- ▶ Improves system reliability and convenience

Handheld Control



Remote Control Panels Features

- Button or knob remote options available
- Fifteen programmable buttons



Powerful Inputs and Outputs

Scalable and capable, bluePRINT offers up to 82 outputs, 96 inputs, 24 virtual inputs, and 450 amps of power distribution to handle any task. More than 50 vehicle CANbus signals are available to work with. As many as five Remote Nodes can be used to simplify and consolidate wiring. bluePRINT can even run two control heads to provide added flexibility.

Diagnostics

Real-time Windows PC-to-vehicle diagnostic connection provides immediate input/output and CANbus status. Technicians can view current and historical faults, reset outputs, and monitor current. Additionally, all inputs and outputs can be toggled on or off for validation testing of programmed functions and connected devices.

Plan > Prioritize > Program

bluePRINT's Windows-based app allows you to configure your system, name and assign input/output relationships, create logic functions and prioritize system actions with the click of a mouse. Once configured, the program is simply uploaded to bluePRINT allowing for rapid multi-vehicle cloning. Full software support including training is available.

Sync for Safety

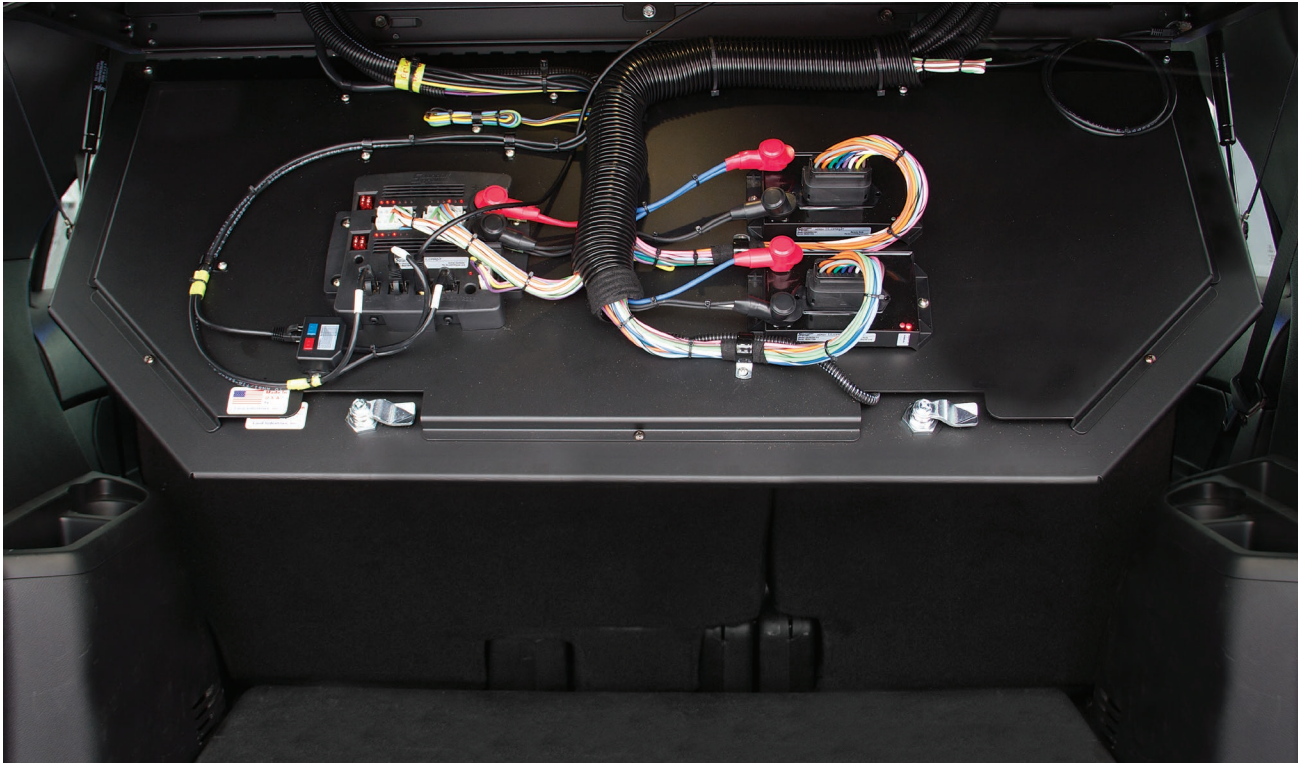
SoundOff Signal's exclusive Sync technology provides true multi-vehicle flash pattern synchronization to improve warning messages. No ongoing fees, no need for connectivity and minimal hardware gets you up and running quickly. See page 41 for additional details.

Input Node



bluePRINT[®] 3 Control System

Improve Safety and Efficiency.
Eliminate Point-to-Point Wiring.
Improve System Reliability and Convenience.



INPUT VOLTAGE 10-16 Vdc (negative ground)

OPERATING TEMPERATURE -40° C to +65° C (remote node up to 85° C)

TOTAL SYSTEM INPUTS

Up to 42 Total Inputs Central Controller Ignition Input
Remote Node: 4 each (up to 5 remote nodes can be used throughout vehicle)

TOTAL SYSTEM OUTPUTS

Up to 86 Total Outputs Central Controller: up to 4 constant on and 20 programmable outputs
Remote Nodes: 10 each (up to 5 remote nodes can be used throughout vehicle)
400 Series PA: 12 non-flashing programmable relay outputs; 3 are 20 Amp outputs

TOTAL SWITCHING CURRENT

Up to 450 Amps Total Central Controller: 100 Amp total
Remote Node: 50 Amp each (up to 5 nodes)
400 Series PA: 100 Amp total

SOFTWARE REQUIREMENTS

PC or Tablet (used only for initial programming and diagnostics)
Windows 7 SP1 or later
Pentium 1GHz or higher
Minimum 512 MB of RAM
Minimum disk space of 5 GB
NET 4.5 Library (will be prompted to download if not already installed, .Net 4.6)
USB 1.1 or higher, cable with Type B plug

bluePRINT³ Link[®] Module

When used with the bluePRINT controller, the bluePRINT Link module allows access to a variety of the vehicle's data parameters.



Module



Central Cable



Vehicle Specific Network Cable

Features

- By incorporating the bluePRINT Link module into the vehicle, the need to splice into discrete wire triggers can be greatly reduced
- Reduces time that is required to install a bluePRINT system into a vehicle
- Increases system reliability due to issues when wiring into discrete triggers
- Provides access to vehicle parameters that may not have been available via discrete wires, such as door status, battery voltage, and vehicle speed, to name a few
- Vehicle parameters can be mapped as input triggers to automate the control of vehicle lighting

Vehicle Models and Years

Chevrolet Models

| Models | Years |
|-------------------------------|-----------|
| GMC Savana Vans..... | 2008-2019 |
| GMC Yukon..... | 2014-2020 |
| Express Vans | 2008-2019 |
| Silverado Pickup Trucks | 2014-2019 |
| Sierra Pickup Trucks | 2014-2019 |
| Suburban | 2014-2020 |
| Tahoe..... | 2014-2020 |

FCA

| Models | Years |
|--------------------------------------|-----------|
| Charger Pursuit..... | 2015-2019 |
| 1500, 2500, 3500, 4500 and 5500..... | 2013-2019 |
| RAM Pickup Trucks | |
| Durango Pursuit..... | 2018-2019 |

Ford Models

| Models | Years |
|---|-----------|
| E-Series Super Duty Vans..... | 2009-2019 |
| E-350 Super Duty Vans | 2009-2017 |
| Expedition | 2015-2019 |
| F-250, F-350, F-450 and F-550 Pickup Trucks | 2011-2018 |
| PI Sedan..... | 2013-2018 |
| PI Utility..... | 2013-2020 |
| Escape | 2016-2017 |
| Transit Van | 2015-2018 |
| Explorer | 2016-2018 |
| F-150..... | 2015-2020 |
| F-150 Responder | 2015-2019 |

Contact your sales representative for latest vehicle models and years.

WARRANTY

Three years from the in-service date (if the warranty registration is completed on-line)
Visit <https://www.soundoffsignal.com/product-registration/> to register this product

One year from the date the product was shipped (if the warranty registration was not completed)

bluePRINT Sync™



GPS Module and Antenna **ENGSYM01**



Antenna Service Part **ENGSYAT01**

Features and Requirements

What is bluePRINT Sync?

- bluePRINT Sync is an add-on component for the bluePRINT 3 System
- It provides true warning system coordination between vehicles
- Sync-equipped emergency vehicles will automatically flash in perfect timing when using the same pattern
- Because of bluePRINT's flexibility in programming, single and multi-color patterns can be set to match or be different based on environmental and operator variances
- When matched with bluePRINT LINK, Sync becomes the industry's first lighting sync system that can be programmed to automatically change colors, patterns or intensities based on input from the vehicle such as speed, and ambient lighting

Why use bluePRINT Sync?

- Improved warning messages. Slow, medium or fast patterns are much more effective and noticeable when multiple vehicles are utilizing synchronized patterns
- Reduced distractions and confusion of multiple, random flashing lights. Approaching drivers can better judge the emergency vehicle's status.
- Improved work area visibility for officers and other roadway users
- Enhanced professional image of all warning or response vehicles on a scene
- Enhanced tactical presence of police by calming scenes and implying control

How Does it Work?

- bluePRINT Sync utilizes GPS technology to keep patterns in sync. Car-to-Car communication is not necessary with this technology
- Using GPS technology means there is no required distance for vehicles to synchronize patterns. They are always in sync, no matter how far they are from one another
- Since bluePRINT Sync works in the background to synchronize patterns, there are ideas that should be discussed with bluePRINT users and programmers regarding the best way to utilize the technology
- Each bluePRINT Sync kit includes a Sync Module, GPS Antenna, Ethernet Splitter and 3' ethernet cable

Hardware Requirements. Only a bluePRINT Central Controller with firmware version 3.08 and newer is required for use with bluePRINT Sync.

Software Requirements. All programming for bluePRINT require access to the bluePRINT Configuration Software. Sync is supported in bluePRINT version 3.8.2 and newer.

Antenna Recommendation. SoundOff Signal only offers technical GPS support using the included GPS antenna Using an antenna other than the recommended can possibly damage the bluePRINT Sync module. Damage to the Sync module from improper antenna usage is not covered under warranty.

INPUT VOLTAGE 10-16 Vdc

OPERATING TEMPERATURE - 40° C to +65° C

CURRENT DRAW <100mA @ 12.8 Vdc

SYSTEM REQUIREMENTS bluePRINT 3 app must be utilized to configure the system
Central controller must have v3.08 or later installed

DIMENSIONS

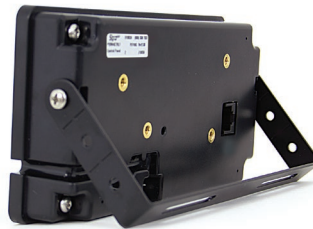
Module Length 3.4" (8.6 cm) Height 0.9" (2.2 cm) Depth 1.6" (4.1 cm)
Antenna Base Length 1.6" (4.0 cm) Height 0.4" (1.0 cm) Depth 1.5" (3.7 cm)

WARRANTY One-year

SoundOff Signal Control System



Eight Button Controller with Slide Switch **ETCPRSP01**



Features

- Similar to the 400 Series remote PA control panel without having the PA tone control
- Retains radio rebroadcast and PA features for applications that do not require tone controls
- Provides up to seven 10 amp and three 20 amp outputs with internal fuses for powering solenoids (amplifier required) or supplying power and signaling to other onboard peripherals (printer, GPS, etc.)
- Built-in protection against over/under voltage, short circuit and reverse polarity
- Features an eight-second buzzer alert to notify users that the level or auxiliary buttons are activated
- Cabling setup is the same as the 400 PA Series allowing for easy swap-in
- Dimmable green LED backlighting
- Dual control panel capability

INPUT VOLTAGE 10-16 Vdc

DIMENSIONS

Handheld Panel

Height 3.51" (8.92 cm)
 Width 6.98" (17.73 cm)
 Depth 1.17" (2.98 cm)

Remote Amplifier/Relay

Height 2.62" (6.66 cm)
 Width 7" (17.80 cm)
 Depth 6.51" (16.54 cm)

WARRANTY Three-year

500 Series

Remote, Console and Handheld Sirens

Coming Soon!



Features

- 200 watt sirens feature dual-tone capability to deliver two siren tones at once to provide officers with extreme “traffic moving” capability
- Designed with extra large buttons with appropriate spacing to eliminate buttons to be accidentally pressed
- Provides up to nine 10 amp, three 20 amp and nine 5 amp outputs with internal fuses for powering solenoids (i.e. gun lock) or supplying power and signaling to other on board peripherals (printer, radar, GPS, etc.) Up to 15 of these outputs are solid-state and flashable
- Nine discrete wire inputs
- Built-in protection against over/under voltage, short circuit and reverse polarity
- Building-in bluePRINT® programmability with input and output expansion modules, timers and load shedding
- Multiple lightbar connections with integrated breakout box functionality
- USB programming with improved diagnostic capabilities
- Compatible with all 400 Series siren control panels

Remote Sirens (with remote conversion kit)

- Removable microphone with quarter inch plug (remote with knob)
- Officers value the sound intensity of the dual-tone feature “fooling” perpetrators into believing multiple police vehicles are in pursuit
- Hands-free feature allow siren tones to be cycled or cancelled by pressing horn (horn-ring circuit must be connected)

Console Sirens (shown)

- Unlike other competitors, nERGY offers two console versions. One version has a five position rotary switch and the other features a four push button switch
- Horn ring scroll provides ability to quickly change tones with the tap of the horn

Handheld Siren

- Provides unique advantages unlike any product on the market today: LED, alley and arrow handheld switch indicators for convenient viewing and extensive programmability
- Horn ring scroll provides ability to quickly change tones with the tap of the horn

nERGY® 400 Series

Remote, Console and Handheld Sirens

Remote



Knob

100 Watts
200 Watts

ETSA481RSR
ETSA482RSR



Button

100 Watts
200 Watts

ETSA481RSP
ETSA482RSP

Console



Console with Knob

100 Watts
200 Watts

ETSA481CSR
ETSA482CSR



Console with Button

100 Watts
200 Watts

ETSA481CSP
ETSA482CSP

Handheld



Handheld

100 Watt
200 Watt
100 Watt (13 feet coil cable length)
200 Watt (13 feet coil cable length)

ETSA461HPP
ETSA462HPP
ETSA461HPP-EXT
ETSA462HPP-EXT

Note: 2 speakers required with the 200 watt version sirens.

Features

Remote, Console and Handheld Sirens

- 200 watt sirens feature dual-tone capability to deliver two siren tones at once to provide officers with extreme “traffic moving” capability
- Designed with extra large buttons with appropriate spacing to eliminate buttons to be accidentally pressed
- Provides up to eight 10 amp and three 20 amp outputs with internal fuses for powering solenoids (i.e. gun lock) or supplying power and signaling to other on board peripherals (printer, radar, GPS, etc.)
- Built-in protection against over/under voltage, short circuit and reverse polarity

nERGY® 400 Series

Remote, Console and Handheld Sirens

Features

Remote Sirens

- Removable microphone with quarter inch plug (remote with knob)
- Officers value the sound intensity of the dual-tone feature “fooling” perpetrators into believing multiple police vehicles are in pursuit
- Hands-free feature allow siren tones to be cycled or cancelled by pressing horn (horn-ring circuit must be connected)

Console Sirens

- Unlike other competitors, nERGY offers two console versions. One version has a five position rotary switch and the other features a four push button switch
- Horn ring scroll provides ability to quickly change tones with the tap of the horn

Handheld Siren

- Provides unique advantages unlike any product on the market today: LED, alley and arrow handheld switch indicators for convenient viewing and extensive programmability
- Horn ring scroll provides ability to quickly change tones with the tap of the horn

| | |
|-------------------|---|
| WATTS | 100 and 200 Watts (2 speakers required with the 200 watt version sirens) |
| INPUT VOLTAGE | 10-16 Vdc |
| DIMENSIONS | |
| Remote Sirens | |
| Handheld Panel | |
| Height | 3.51" (8.92 cm) |
| Width | 6.98" (17.73 cm) |
| Depth | 1.17" (2.98 cm) |
| Amplifier/Relay | |
| Height | 2.62" (6.66 cm) |
| Width | 7" (17.80 cm) |
| Depth | 6.51" (16.54 cm) |
| Console Sirens | |
| Console Faceplate | |
| Height | 3.17" (8.5 cm) |
| Width | 7.54" (19.15 cm) |
| Amplifier/Relay | |
| Height | 2.64" (6.73 cm) |
| Width | 7.02" (17.84 cm) |
| Cut-out | |
| Height | 2.72" (6.91 cm) |
| Width | 7.10" (18.034 cm) |
| Handheld Siren | |
| Panel | |
| Height | 3.51" (8.92 cm) |
| Width | 6.98" (17.73 cm) |
| Depth | 1.17" (2.98 cm) |
| Amplifier/Relay | |
| Height | 2.62" (6.66 cm) |
| Width | 7" (17.80 cm) |
| Depth | 6.51" (16.54 cm) |
| CERTIFICATIONS | Meets or exceeds SAE J1849 CA Title 13 sound levels when used with SoundOff Signal® speakers |
| WARRANTY | Five-year |

200 Series

Remote Sirens

PA Function Siren



PA Function, Remote Amplifier and Remote Switch Panel

Single 100 Watt (connector is sold separately)

Molex Connector and Mating Harness; Weatherproof

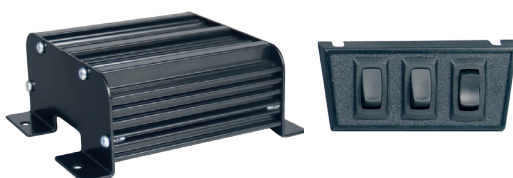
Delphi Connector and Mating Harness

ETSA200R-PA

ETSA200RA-PA

ETSA200RW-PA

Compact Siren



Compact, Remote Amplifier and Remote Switch Panel

100 Watt

Molex Connector and Mating Harness

Delphi Connector and Mating Harness

ETSA200R

ETSA200RA

ETSA200RW

Features

PA Function, Remote Amplifier and Remote Switch Panel

- The microphone includes a pre-amp, 15 feet of power and signal cable, adjustable gain and a three-pin removable connector
- The pre-amp features an additional gain adjustment

Compact, Remote Amplifier and Remote Switch Panel

- Compact siren has a small, remote amplifier to fit tight spaces for undercover vehicles or motorcycles

PA Function, Remote Amplifier and Remote Switch Panel

Compact, Remote Amplifier and Remote Switch Panel

- Class D technology with high speed digital switching provides higher efficiency, less current draw and better reliability
- Operates a single 100 watt speaker or dual 58 watt speaker (compact, remote amplifier only)
- Five warning tones (up to three tones can be activated) wail, yelp, piercer, hi-lo or super hi-lo, an additional four air horn tones available
- Horn ring (hands free operation) controls the tones and can be programmed to broadcast warning or air horn tones.
- Volume can be set for the public address (PA) and radio rebroadcast within the 200R amplifier; this feature can be pre-set to a desired level during installation
- Park/kill feature disables the siren when the vehicle is placed in park
- Built-in protection against over/under voltage, over temperature, short circuit and reverse polarity
- Hermetically sealed, providing protection in wet areas

WATTS 100 Watts

INPUT VOLTAGE 10-30 Vdc

DIMENSIONS

Length 5.4" (13.7 cm)

Height 2.3" (5.8 cm)

Depth 4.6" (11.6 cm)

CERTIFICATIONS Meets or exceeds SAE J1849, CA Title 13 sound levels when used with SoundOff Signal® speakers
ECE R10.05 certified (compact siren only)

WARRANTY Two-year

LF Aftershock

Siren System



Siren System, Includes Universal Bracket

100 Watt Speaker, 200 Watt Amplifier **ETSKLF100**

Two (2) 100 Watt Speakers, 200 Watt Amplifier **ETSKLF200**

Speaker, Includes Universal Bracket

Low Frequency Speaker, 100 Watt **ETSSLF100**

Vehicle Specific Brackets

Siren and speaker sold separately.

| | | | | |
|-------|------------|------------------------------|-----------|-------------|
| Dodge | Charger | Lower Frame Mount (no drill) | 2011-2019 | ETSSLFVBK08 |
| | Durango | Upper and Lower Frame Mount | 2016-2019 | ETSSLFVBK01 |
| | | Lower Frame Mount (no drill) | 2016-2019 | ETSSLFVBK02 |
| Ford | PI Utility | Lower Frame Mount | 2015-2019 | ETSSLFVBK03 |
| Ford | PI Utility | Lower Frame Mount | 2020 | ETSSLFVBK07 |
| Ford | PI Utility | Driver Side | 2020 | ETSSLFVBK09 |

Features

- Highly effective low frequency sound waves create deep warning tones for enhanced traffic clearing
- Ideal for areas with heavy traffic and busy intersections
- Includes universal bracket

WATTS 100 Watts with 1 speaker or 200 Watts with 2 speakers

INPUT VOLTAGE 10-16 Vdc

OPERATING TEMPERATURE -40° C to +65° C

CURRENT DRAW 8 Amps at 100 Watts and 16 Amps at 200 Watts

OUTPUT VOLTAGE 58-64 Vpk-pk

DIMENSIONS

Siren

Height 2.4" (6 cm)

Width 4.7" (11.9 cm)

Depth 5" (12.7 cm)

Speaker

Height 8.5" (21.6 cm)

Diameter 7.2" (18.4 cm)

WARRANTY Three-year

100C Series Speaker



ETSS100C

Vehicle Specific Brackets

Speaker sold separately.

| | | | | |
|-----------|------------|-----------------------------|-----------|------------------|
| Chevrolet | Caprice | Driver Side | 2011-2017 | ETSS100BKCP-D |
| | Caprice | Passenger Side | 2011-2017 | ETSS100BKCP-P |
| | Impala | | 2006-2016 | ETSS100BKPALA |
| | Tahoe | Driver Side | 2015-2016 | ETSS100CBKTH15-D |
| | Tahoe | Passenger Side | 2015-2016 | ETSS100CBKTH15-P |
| | Tahoe | | 2006-2014 | ETSS100CBKTH |
| Dodge | Charger | | 2011-2017 | ETSS100CBKDC11 |
| | Charger | Bumper Mount (no drill) | 2015-2017 | ETSS100CBKDC15 |
| Ford | PI Sedan | Bumper Mount (no drill) | 2013-2017 | ETSS100CBKFS-BP |
| | PI Utility | Bumper Mount (no drill) | 2016-2017 | ETSS100CBKFV-BP |
| | PI Utility | Frame Mount, Driver Side | 2013-2017 | ETSS100BKFV-FR |
| | PI Utility | Frame Mount, Passenger Side | 2013-2015 | ETSS100BKFV-FS |

Features

- Designed with clear, powerful output using neodymium magnet
- Weatherproof and corrosion resistant cast aluminum housing
- Perfect for public address and other high intelligibility communication and signaling applications
- Includes universal bail bracket

WATTS 100 Watts

DIMENSIONS

Height 6.625" (16.1925 cm)

Width 6.75" (13.335 cm)

Depth 2.3125" (7.6 cm)

WARRANTY Five-year

100J Series

Composite Speaker



ETSS100J

Vehicle Specific Bracket

Speaker sold separately.

Ford PI Utility Bumper Mount (no drill) 2020 ETSSVBK01

Features

- Composite housing creates electrical isolation from vehicle chassis to extend product life
- Weather tested, glass reinforced nylon material will not corrode like a traditional aluminum speaker
- Designed for passive water and moisture egress
- Designed for clear, powerful output using neodymium magnet
- Compact design with powerful 100 watt output
- Ferro-fluid filled coil
- Includes universal bail bracket
- Meets CA Title 13, Class A when used with SoundOff Signal siren amplifier

WATTS 100 Watts

| DIMENSIONS | Without Bracket | With Bracket |
|------------|-----------------|---------------|
| Height | 6.75" (17.1 cm) | 7.5" (19 cm) |
| Width | 6.75" (17.1 cm) | 6.88" (17 cm) |
| Depth | 3.5" (8.9 cm) | 3.5" (8.9 cm) |

WARRANTY Two-year

100U and XWA Series

Composite Speakers

Coming Soon!



100U Series



XWA Series

100N Series

Composite Speaker



ETSS100N

Vehicle Specific Brackets

Speaker sold separately.

| | | | | |
|-----------|------------|--------------------------|-----------|------------------|
| Chevrolet | Caprice | Driver Side | 2011-2017 | ETSS100BKCP-D |
| | Caprice | Passenger Side | 2011-2017 | ETSS100BKCP-P |
| | Tahoe | Driver Side | 2015-2016 | ETSS100CBKTH15-D |
| | Tahoe | Passenger Side | 2015-2016 | ETSS100CBKTH15-P |
| Dodge | Charger | | 2011-2017 | ETSS100CBKDC11 |
| | Charger | Bumper Mount (no drill) | 2015-2017 | ETSS100CBKDC15 |
| Ford | PI Sedan | Bumper Mount (no drill) | 2013-2017 | ETSS100CBKFS-BP |
| | PI Utility | | 2013-2017 | ETSS100BKFD-FR |
| | PI Utility | Bumper Mount (no drill) | 2016-2017 | ETSS100CBKfV-BP |
| | PI Utility | Frame Mount, Driver Side | 2016-2017 | ETSS100BKfV-FR |
| | PI Utility | Bumper Mount (no drill) | 2020 | ETSSVBK01 |

Features

- Weather tested, glass reinforced nylon material will not corrode like a traditional aluminum speaker
- Composite housing creates electrical isolation from vehicle chassis to extend product life
- Improved design for passive water and moisture egress
- Designed for clear, powerful output using neodymium magnet
- Compact design with powerful 100 watt output
- Weatherproof and corrosion resistant cast aluminum housing
- Perfect for public address and other high intelligibility communication and signaling applications
- Includes universal bail bracket

WATTS 100 Watts

DIMENSIONS

Height 6.25" (15.88 cm)
 Width 6.25" (15.88 cm)
 Depth 2.67" (6.78cm)

CERTIFICATIONS SAE J1849 certification requirements when used with SoundOff Signal® 400 Series sirens

WARRANTY Five-year

Intelliswitch 990 and 993

Digital Switches

Switches



990 Digital Switch ETSP990



993 Digital Switch with Power Pursuit Buttons ETSP993

Features: 990

- Offers six Ryno-Tuf durable push buttons that are fully programmable with 60 amp maximum output with one push button that can be set as an eight second timed momentary if needed
- Model offers high speed action, low current draw and increased reliability with efficient digital technology
- Switches can be console mounted if desired
- Compact, slim design with self performing diagnostics at power-up to ensure optimum performance

Features: 993

- Offers 11 programmable buttons, nine total Ryno-Tuf push buttons, three power pursuit with two hidden "discreet" membrane buttons located behind the SoundOff Signal® logo
- Configure the power pursuit buttons to operate any combination of the 6 remaining push buttons automatically, eliminating hours of tedious wiring
- Two hidden membrane switches can be programmed for discreet functions of your choice such as timed gun lock
- Model offers high speed action, low current draw and increased reliability with efficient digital technology
- Switches can be console mounted if desired
- Compact, slim design with self performing diagnostics at power-up to ensure optimum performance

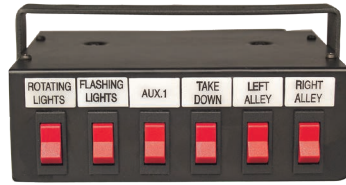


Both models feature Ryno-Tuf push buttons, 60 title legend sheets and an optional bracket with mounting hardware.

| | |
|---------------|---|
| INPUT VOLTAGE | 12 Vdc |
| CURRENT DRAW | |
| 990 | 60 Amp maximum |
| 993 | 2 Amp maximum |
| DIMENSIONS | |
| Width | 6.5" (16.5 cm) |
| Height | 2.5" (6.4 cm) |
| Depth | 2" (5.1 cm) |
| MOUNTING | 2-piece swivel style bracket included or can be console mounted |
| WARRANTY | Five-year |

600, 900 Series and Directional Arrow Switches

600 and 900 Series



600 Series 6 Function Switch **ETSP6F**



900 Series Function Switch **ETSP9F**

Features: 600 Series

- Six mini rocker switches with red LED indicator ON lights. Has a single 40 amp relay/circuit breaker with five to twenty amp fused switch output
- Includes switch box with universal bracket, mounting hardware, switch labels and 18" pigtail with insulated quick connects for termination

Features: 900 Series

- Nine functions, three position slide switch with six mini rocker switches. Slide switch features 20 amp/output with LED indicator on lights
- Includes switch box with universal bracket, mounting hardware, switch labels and 18" pigtail with insulated quick connects for termination

INPUT VOLTAGE 12 Vdc

CURRENT DRAW

600 Series 40 Amp max
900 Series 60 Amp max

DIMENSIONS

Width 6.2" (16 cm)
Height 2.2" (5.6 cm)
Depth 5.2" (13 cm)

WARRANTY One-year

Directional Arrow



Directional Arrow Switch **ETSWDAS01**

Feature

- Seven programmable warning modes with a fully illuminated display to show pattern activated and input selected

INPUT VOLTAGE 10-30 Vdc

CURRENT DRAW .8 Amp

DIMENSIONS

Width 6.5" (17 cm)
Height 3.5" (8.9 cm)
Depth 1.2" (3 cm)

WARRANTY One-year

SW830 Multi-purpose Control Panel

with Power Module



Streamlined 8-Button Controller



ETCPMSW830

Features

- Eight switches control panel with three 10 amp and five 0.2 amp outputs for auxiliary device power or function activation
- All back lit rubber touch buttons
- Fully programmable buttons in ON/OFF or momentary switch mode
- 35 selectable icon stickers to clearly label panel

| | | |
|-----------------------|-----------------------------------|-----------------|
| INPUT VOLTAGE | 10-24 Vdc | |
| INPUT CURRENT | Peak 32A, Average 21A / Min 0.01A | |
| CONTROL PANEL CABLE | 8 pin RJ45 cable, 24 AWG, 4m | |
| OPERATING TEMPERATURE | -30° C to +65° C | |
| DIMENSIONS | Control Panel | Power Module |
| Length | 3.74" (9.5 cm) | 4.4" (11.18 cm) |
| Height | 2.7" (6.86 cm) | 3.5" (8.9 cm) |
| Depth | 1" (2.54 cm) | 1.05" (2.67 cm) |
| WARRANTY | One-year | |

Headlight Plug-in Flashers



Ford PI Utility, 2016-2019

ETHFFUT-16

Features

- Select-a-Pattern Technology with seven user selectable flash patterns: PowerPulse, RoadRunner, ETM, Cycle Flash, Q-Switch, Single Flash or Double Flash Alternating
- Durable and non-corrosive ABS plastic housing
- 100% solid state output, potted design for long-lasting, reliable performance
- Positive switching
- 10-16 Vdc



Chevy Caprice, 2011-2017

ETHFSS-CP



Chevy Tahoe, Solid State, 2007-2020

ETHTAH0-07+

Features

- Easy installation with plug-in connectors for police package models
- Single flash pattern, PowerPulse
- Features high beam override
- Built-in shutdown protection against loss of ground, short circuit and under voltage
- Durable and non-corrosive ABS plastic housing
- 100% solid state, potted design for long-lasting, reliable performance

Headlight Flasher



8-30 Vdc, 9.5 amp output and 18" wire leads

8-30 Vdc, 9.5 amp output, isolated, extended and loomed leads, mounting bracket

8-30 Vdc, 9.5 amp output, fleet connector amp

8-30 Vdc, 9.5 amp output, isolated, 18 inch leads

ETHFSS-SP

ETHFSS-FV

ETHFSS-SPFL

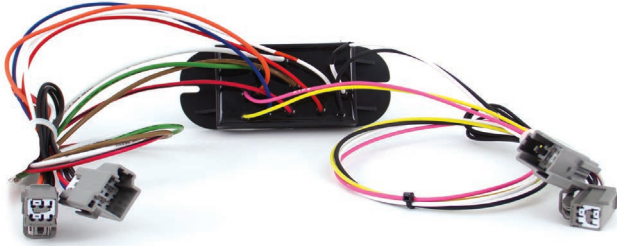
ETHFSS-SP-ISO

Features

- Select-a-Pattern Technology with eight user selectable flash patterns
- Ideal for most "big three" car models - designed for two to four headlight positive side switched headlight systems
- Durable and non-corrosive ABS plastic housing
- 100% solid state output, potted design for long-lasting, reliable performance
- Positive switching

Flashback Alternating Taillight

Solid State Flashers



Ford PI Utility, 2016-2020

ETFFUT-16

10-16 Vdc, 5 amp output, isolated

10-16 Vdc, 5 amp output, isolated, fleet connector

ETFBSSN-P

ETFBSANFL



Features

- Twelve wire module with isolating diodes for the brake and reverse wire that are required for many new vehicles
- For use with vehicles that have the negative post of the battery connected to the chassis of the vehicle
- Provides an additional output for deck lights
- Alternating red and white light creates an effective rear warning signal to greatly reduce rear end collisions
- 100% solid state, potted design for long-lasting, reliable performance

LED Light Flasher



Two output with eight flash patterns

ETFFC02LED

Features

- Synchronizes all LED warning lights, overrides all SoundOff Signal® LED warning lights to take over pattern control
- Two LED flashers offer seven user selectable flash patterns
- For use with LED lights only

Opticom™ Preemption LED Module

Opticom™ is a registered trademark of Global Traffic Technologies, LLC.



Infrared High Priority

EGTTE794H

| | |
|-----------------------|--------------------------------------|
| LIGHT SYNC | Yes |
| INPUT VOLTAGE | 10-32 Vdc |
| CURRENT DRAW | <1 Amp |
| OPERATING TEMPERATURE | -30° F to -165° F / -34° C to +74° C |
| DIMENSIONS | |
| Width | 4.5" (11.5 cm) |
| Height | 3.16" (8.0 cm) |
| Depth | 2.23" (5.7 cm) |
| CERTIFICATIONS | SAE J575 and J455 certified |
| WARRANTY | Five-year |

Features

- Provides emergency vehicle preemption to all intersections equipped with Opticom Infrared systems. Module generates a series of pulses in the infrared wavelength to allow preemption for emergency vehicles
- High efficiency LEDs require up to 90% less electrical power than conventional emitters, conserving power for other onboard emergency equipment. LED technology provides a higher level of consistent performance over the life of the emitter

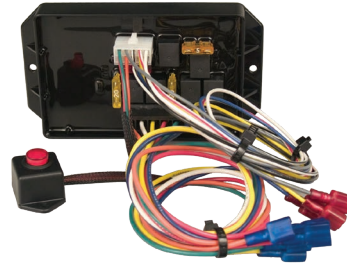
Ignition Security Systems

Heavy Duty and Standard



Heavy Duty Model

ETISSO-06+



Standard Model

ETISSO-07+

Features: Heavy Duty Model

- Designed to be compatible with many different types of vehicles
- For heavy duty vehicles that require higher current draw through the ignition switch
- Allows the vehicle to stay running when the key is removed from the ignition switch
- Brake pedal and shift lever movement disables the ignition security system and stops the engine (sounds horn if connected)
- Over-ride simply deactivates by turning the key to the run position and depressing brake
- Additional relay output provides normally open or normally closed contact for starter disable, gun lock disable, camera record, etc.
- Optional horn or siren alarm

Features: Standard Model

- Easy to install and designed to be compatible with a variety of vehicles
- Connectors allow for quick replacement/removal of the ignition security system
- Allows the vehicle to stay running when the key is removed from the ignition switch
- Brake pedal and shift lever movement disables the ignition security system and stops the engine (sounds horn if connected)
- Override simply deactivates by turning the key to the run position and depressing brake
- Automatic low voltage detection will activate the horn to provide notification of vehicle problems
- Additional universal output provides normally open or normally closed contact for starter disable, gun lock disable, camera record, etc.

| | |
|----------------------|--|
| INPUT VOLTAGE | 10-16 Vdc |
| CURRENT DRAW | |
| Heavy Duty | 8 outputs, 130 Amp total |
| Standard | 4-10 Amp output |
| DIMENSIONS | |
| Heavy Duty | |
| Length | 6" (15 cm) |
| Height | 3.5" (8.9 cm) |
| Depth | 1.5" (3.8 cm) |
| Standard | |
| Length | 6" (15 cm) |
| Height | 3.4" (8.6 cm) |
| Depth | 0.8" (2.0 cm) |
| MOUNTING | |
| Heavy Duty | Behind dash, within wire length of the steering column, on 5.6" (14 cm) centers, 16" (41 cm) wires |
| Standard | Behind dash, within wire length of the steering column, on 5.6" (14 cm) centers, 24" (61 cm) wires |
| WARRANTY | One-year |

Dome Interior Lights

Night Light, Red LEDs



Dodge Charger, Ford PI Sedan
and Ford Utility

ECVDMLTALDC

Features

- Reverse polarity protection
- Load dump protection
- LED dome lights offer a low amp draw, superior efficiency and hours of long-lasting reliability

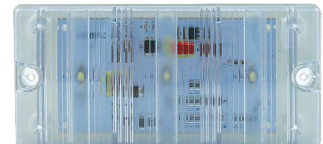
| | |
|------------------------------|--|
| INPUT VOLTAGE RANGE | 10-30 Vdc |
| CURRENT DRAW | White LEDs: 129-156mA @ 13.5 Vdc Red LEDs: 106-129mA @ 13.5 Vdc |
| TECHNOLOGY | 12 white LED and 12 red LEDs |
| OPERATING TEMPERATURE | -20° C to +65° C / -4° F to +149° F |
| DIMENSIONS | |
| Diameter | 6.2" (15 cm) |
| Depth | 1.54" (2.3 cm) |
| MOUNTING | Surface mount |
| WARRANTY | Five-year |

Universal, White LEDs



White Dome (shown)
White Dome, Grey Base

ECVDMLTST4
ECVDMLTST4G



White Dome

ECVDMLTST2

Features

- Easy on the electrical system
- Great for interior light for overhead lighting

| | | | | | |
|----------------------------|---------------|--------------------|---------------|-------------------|-----------------|
| INPUT VOLTAGE RANGE | | ECVDMLTST4G | 10-16 Vdc | ECVDMLTST2 | 10-30 Vdc |
| CURRENT DRAW | | ECVDMLTST4G | <0.45 Amp | ECVDMLTST2 | <0.65 Amp |
| DIMENSIONS | | ECVDMLTST4G | | ECVDMLTST2 | |
| ECVDMLTST4 | | ECVDMLTST4G | | ECVDMLTST2 | |
| Width | 6" (15.24 cm) | Width | 6" (15.24 cm) | Width | 7" (17.78 cm) |
| Height | 3" (7.62 cm) | Height | 3" (7.62 cm) | Height | 3.25" (8.25 cm) |
| MOUNTING | | Surface mount | | | |
| WARRANTY | | ECVDMLTST4G | Two-year | ECVDMLTST2 | Five-year |
| ECVDMLTST4 | Two-year | ECVDMLTST4G | Two-year | ECVDMLTST2 | Five-year |

Strip Interior Lights

Strip Mount



12" Length, 10-16 Vdc

ECVCSMLEDF

12" Length, 10-30 Vdc

ECVCSMLEDF-24

Features

- Light has a white steel base with a scratch resistant polycarbonate lens
- Specially engineered Fresnel lens to boost light output and brightness
- Includes 2-wire lead with a 18" length

90 Degree Corner Mount



10" Length, 10-16 Vdc

ECVCSLLED10

10" Length, 10-30 Vdc

ECVCSLLED10-30

21" Length, 10-16 Vdc

ECVCSLLED21

21" Length, 10-30 Vdc

ECVCSLLED21-30

32" Length, 10-16 Vdc

ECVCSLLED32

32" Length, 10-30 Vdc

ECVCSLLED32-30

43" Length, 10-16 Vdc

ECVCSLLED43

43" Length, 10-30 Vdc

ECVCSLLED43-30

Features

- Streamlined, low amp draw LED lighting
- Easy installation - make a simple 2-wire electrical connection
- Glossy white powder coated aluminum housing with a polycarbonate lens
- Includes 2-wire lead with a 18" length

Flush Mount



12" Length, 10-16 Vdc

ECVCLLED12

24" Length, 10-16 Vdc

ECVCLLED24

36" Length, 10-16 Vdc

ECVCLLED36

42" Length, 10-16 Vdc

ECVCLLED42

Features

- Specially engineered lens optic directs light away from viewer's eye
- Glossy white powder coated aluminum housing with a polycarbonate lens
- Includes 2-wire lead with a 18" length and end/trim caps

Strip, 90 Degree Corner and Flush Mounts

CURRENT DRAW 0.4 Amp per 12" length

WARRANTY Five-year

PAR46 Unity[®]

Spot Light Insert



Spot Lens, White LEDs

ESL461WC

Features

- Easy installation
- LED technology rated at 215,000 candlepower with up to 50,000 hours of lamp life
- Two degrees tightly controlled focus
- Hard-coated, polycarbonate lens that is break resistant, virtually indestructible

| | |
|------------------------------|--------------------------------------|
| LED COUNT | 9 LEDs |
| INPUT VOLTAGE | 12 Vdc |
| CURRENT DRAW | 2.4 @ 12 Vdc |
| OPERATING TEMPERATURE | -40° C to +50° C / -40° F to +122° F |
| DIMENSIONS | |
| Width | 5.75" (14.8 cm) |
| Depth | 3.3" (8.4 cm) |
| CERTIFICATIONS | SAE J575, 578 and 591 certified |
| WARRANTY | Five-year |

Mighty Night Light

400 Lumen LED Spot Lights

Forward Facing Lens



15 Degrees **EAUSSMBOAWC**

Flood Lens



20 Degrees **EAUSSMBOSWC**



45 Degrees **EAUSSMB0FWC**

Features

- High powered white LED spot lights with a compact size that allows you to use it anywhere you have restricted space such as push bumpers or around the license plate
- Powerful and bright 400 lumen output
- Can be mounted vertically or horizontally

| | |
|-----------------------|--|
| INPUT VOLTAGE | 10-30 Vdc |
| CURRENT DRAW | 0.45 to 0.65 Amps @ 12.8 Vdc |
| LED COUNT | 1 LED |
| ILLUMINATION PATTERNS | |
| FORWARD FACING | 15° |
| STANDARD FLOOD | 20° |
| FLOOD | 45° |
| OPERATING TEMPERATURE | -40° to +65° C / -40° to +149° F |
| COLOR TEMPERATURE | 5700k |
| DIMENSIONS | |
| Length | 2.8" (7.1 cm) |
| Height | 4.1" (1.0 cm) |
| Depth | 1.3" (3.3 cm) |
| MOUNT | Surface mount on 3.5" (8.9 cm) centers |

GOLIGHT

Halogen Search Light

Hardwired Dash, Wireless Handheld and Dash Mount Remotes

Features

- Exclusive CR5 pentabeam technology
- 370° rotation x 135° tilt
- 225,000 candela, max beam distance of 3,113 feet
- 5.5 amps
- 8° beam angle
- 65 watt H9 bulb
- UV ray and saltwater resistant