



2003 - 2016 Toyota 4Runner
2007 - 2014 Toyota FJ Cruiser
2" Value Kit
Installation Instructions

REQUIRED TOOL LIST:

- Safety Glasses
- Metric / Standard Wrenches & Sockets
- Ball Joint remover
- Tie Rod Remover
- Floor Jack
- Jack Stands
- Measuring Tape
- Torque Wrench



Before beginning the installation, thoroughly & completely read these instructions & the enclosed driver's WARNING NOTICE. Affix the WARNING decal in the passenger compartment in clear view of all occupants. Please refer to the Parts List to insure that all parts & hardware are received prior to the disassembly of the vehicle.

Park the vehicle on a level concrete or asphalt surface. Many times a vehicle is not level (side-to-side) from the factory & is usually not noticed until a lift kit has been installed, which makes the difference more visible. Using a measuring tape, measure the front & rear (both sides) from the ground up to the center of the fender opening above the axle. Record this information below for future reference.

Driver Side Front: _____

Passenger Side Front: _____

Driver Side Rear: _____

Passenger Side Rear: _____

Important Notes:

- This lift kit is **not designed** nor **will fit** Toyota 4Runner models with **X-REAS** or **KDSS** packages.
- If larger tires (10% more than the OEM diameter) are installed, speedometer recalibration will be necessary. Contact your local Toyota dealer or an authorized dealer for details.
- After installation, a qualified alignment facility is required to align the vehicle to the OEM specifications.

Component Box Breakdown:

Part #: FJ20MS / T420MS

Item #	Description	Qty
TC520MS-S	4RUNNER / FJ FRONT SPACER	2
FJPS15	4RUNNER / FJ REAR SPACER	2

Item #	Description	Qty
HB-716X2DES	HDWR BAG: 7/16 X 2 STUDS	1
I-T420MS	INST SHEET: FJ20MS / T420MS	1

Hardware Breakdown:

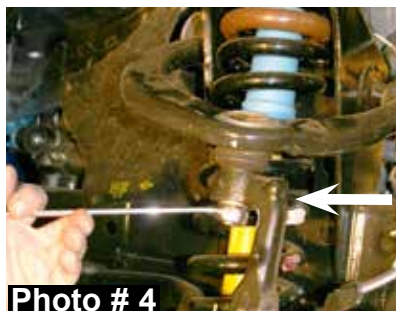
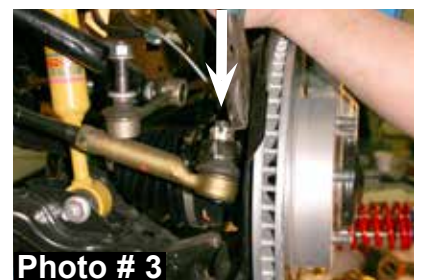
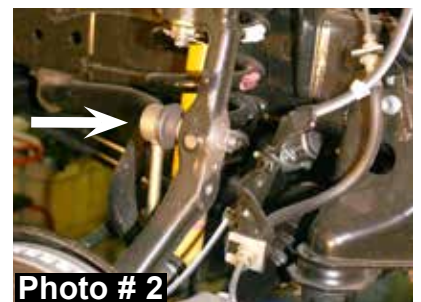
Part # HB-716X2DES

Item #	Description	Qty
716X2DES	7/16 X 2 DOUBLE ENDED STUD	6
716SAEW	7/16 SAE WASHER	6

Item #	Description	Qty
716FTN	7/16 FINE THREAD LOCK NUT	6
LT100	NUTS N' BOLTS 427 1 ML TUBE	1

Front Installation:

1. With the vehicle on flat level ground, set the emergency brake, & block the rear tires / wheels.
2. Raise the front of the vehicle & support the vehicle securely using jack stands.
3. Remove the front tires / wheels.
4. Remove the OEM ABS lines from the OEM upper A-arms & disconnect the OEM ABS / brake lines from the OEM steering knuckles. (See Photo # 1)
5. Disconnect the OEM sway bar end links from the OEM steering knuckles. (See Photo # 2)
6. Disconnect the OEM outer tie rods from the OEM steering knuckles using a tie rod remover or other suitable tool. (See Photo # 3)
7. Disconnect the lower strut mounts from the OEM lower A-arms.
8. Disconnect the OEM upper A-arms from the OEM steering knuckles using a ball joint remover or other suitable tool. (See Photo # 4)
9. Remove the upper strut mounting bolts from the OEM upper frame mounts & remove the OEM strut assemblies. (See Photo # 5)



10. Assemble the new Skyjacker front metal spacers using the supplied 7/16" x 2" double ended studs & thread locking compound. (See Photo # 6)
11. Install the new Skyjacker front metal spacers to the top of each OEM strut assembly using the OEM hardware. (See Photo # 7)
12. Connect the new strut assemblies to the OEM lower A-arms using the OEM hardware.
13. Connect the new strut assemblies to each upper frame mount using the supplied 7/16" fine thread nuts & washers. (See Photo # 8)
14. Connect the OEM upper A-arms to the OEM steering knuckles using the OEM hardware. **Note:** It may be necessary to use a pry bar to pull the OEM A-arms down enough to reattach.
15. Connect the OEM outer tie rods to the OEM steering knuckles using the OEM hardware.
16. Connect the OEM ABS / brake lines to the OEM upper A-arms using the OEM hardware. (See Photo # 9)
17. Connect the OEM sway bar end links to the OEM steering knuckles using the OEM hardware. (See Photo # 9)
18. Install the front tires / wheels & lower the front of the vehicle to the ground.

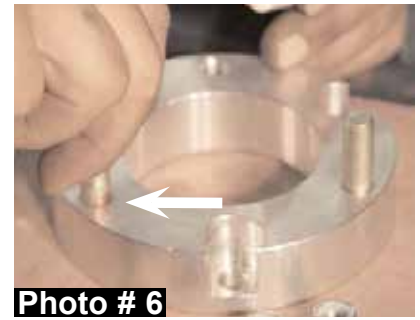


Photo # 6



Photo # 7

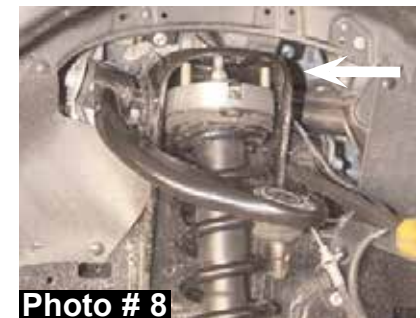


Photo # 8



Photo # 9

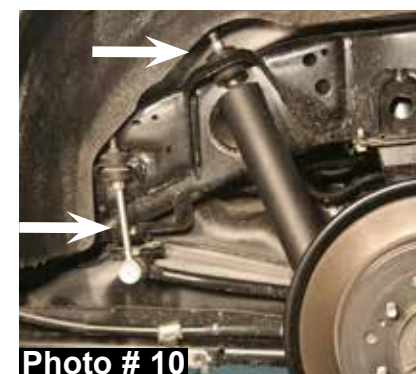
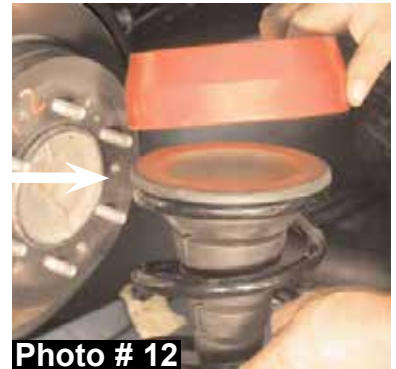
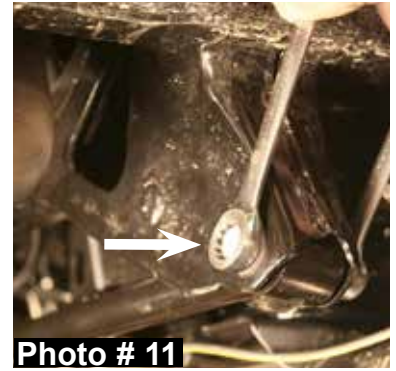


Photo # 10

Rear Installation:

1. Block the front tires / wheels, raise the rear of the vehicle, & support securely using jack stands.
2. While supporting the rear differential, remove the rear tires / wheels.
3. Remove the OEM rear shocks. (See Photo # 10)
4. Disconnect the OEM rear sway bar end links from the OEM sway bar. (See Photo # 10)
5. Disconnect the OEM rear brake line brackets from the rear differential.

6. Disconnect the OEM rear track bar from the OEM frame bracket.
(See Photo # 11)
7. Lower the rear differential & install the new Skyjacker rear coil spring spacers on top of each OEM rear coil spring isolator / bump stop.
(See Photo # 12)
8. Raise the rear differential to the new rear coil spring / spacer assemblies & attach the OEM rear track bar to the OEM frame bracket.
9. Connect the OEM rear brake line brackets to the rear differential.
10. Connect the OEM rear sway bar end links to the OEM sway bar.
11. Install the new Skyjacker rear shocks using the OEM & supplied hardware. (See Photo # 13)
12. Install the rear tires / wheels & lower the rear of the vehicle to the ground.



Final Notes:

- After the installation is complete, double check that all nuts & bolts are tight. Refer to the following chart for the proper torque specifications. (Do not retighten the nuts & bolts where thread lock compound was used.)
- With the vehicle placed on the ground, cycle the steering lock to lock & inspect the steering, suspension, brake lines, front & rear drivelines, fuel lines, & wiring harnesses for proper operation, tightness, & adequate clearance.
- Have the headlights readjusted to the proper settings.
- Have a qualified alignment center align the vehicle to the OEM specifications.
- After the first 100 miles, check all of the hardware for the proper torque & periodically thereafter.

TORQUE SPECIFICATIONS

<u>INCH SYSTEM</u>			<u>METRIC SYSTEM</u>		
Bolt Size	Grade 5	Grade 8	Bolt Size	Class 8.8	Class 10.9
5/16	15 FT LB	20 FT LB	6MM	5 FT LB	9 FT LB
3/8	30 FT LB	35 FT LB	8MM	18 FT LB	23 FT LB
7/16	45 FT LB	60 FT LB	10MM	32 FT LB	45 FT LB
1/2	65 FT LB	90 FT LB	12MM	55 FT LB	75 FT LB
9/16	95 FT LB	130 FT LB	14MM	85 FT LB	120 FT LB
5/8	135 FT LB	175 FT LB	16MM	130 FT LB	165 FT LB
3/4	185 FT LB	280 FT LB	18MM	170 FT LB	240 FT LB

- The above specifications are not to be used when the bolt is being installed with a bushing.

Seat Belts Save Lives, Please Wear Your Seat Belt.

Rely on premium performance lift kits by Skyjacker if you're looking for quality and efficiency.