



**2020**



**SINISTER DIESEL®** founders Brian George, Michael Mitchell and their whole team share a love of everything diesel. One afternoon, while working on Brian's truck they thought of starting a new company.

"There were already online parts suppliers," says Brian, "so we knew it wasn't enough to just start another one. We wanted to create a high performance diesel parts company that actually changed the way business was done." From the quality of parts, to the Sinister name, to the trademark Sinister Blue® color, the company has set new standards for the aftermarket diesel parts industry.

"We must be doing something right," says Mitchell. "The popularity of our components and merchandise has grown each year bringing rapid change and expansion to the company. In the early days, we occupied a simple office with a single desk. Today, our manufacturing and administrative headquarters in California occupy 30,000 square-feet, along with satellite facilities throughout the U.S."

New prototyping, fabricating and distribution methods allow Sinister to continually raise the bar of both performance, technology and customer service. As you'll see from this catalog, the result is an ever-growing line of parts available for an ever-expanding range of truck models and year ranges.

Looking down the road, Sinister sees even more exciting developments. But whatever changes are in store, one thing is for sure, Sinister Diesel will continue to be #1 in parts and kits, helping customers unleash their trucks, dealers unleash their profits, and the industry unleash a market driven by people like you, wanting to live the Sinister Lifestyle!

## NAVIGATION

This new 2020 book of Sinister Diesel parts is categorized by truck manufacturer's engine. Please use the colored tabs to find products that fit your truck.

We encourage you to browse through the rest of the catalog to see all the other amazing diesel products we make.

# *DURAMAX*

pg. 5-32

DURAMAX

# *CUMMINS*

pg. 33-54

CUMMINS

# *POWERSTROKE*

pg. 57-102

POWERSTROKE

# *UNIVERSAL*

pg. 103-106

UNIVERSAL



**CHEVY/GM**  
**DURAMAX**

---

## **POWERMAX SERIES** **TURBOS**

Unleash Your Truck® with Sinister Diesel's Powermax Series turbos. Get maximum acceleration and torque when towing or in any situation where performance counts. These direct drop-in replacements feature billet blade compressor wheels in a variety of configurations. Plus, they feature VSR high speed balance; amplified turbo noise; support for up to 690 hp; 12 month/24,000 mile warranties and more. In addition, the polished and powder coated Sinister Blue® housings give your engine bay a custom look.





2011-16 Chevy 6.6 Duramax LML



**DURAMAX**

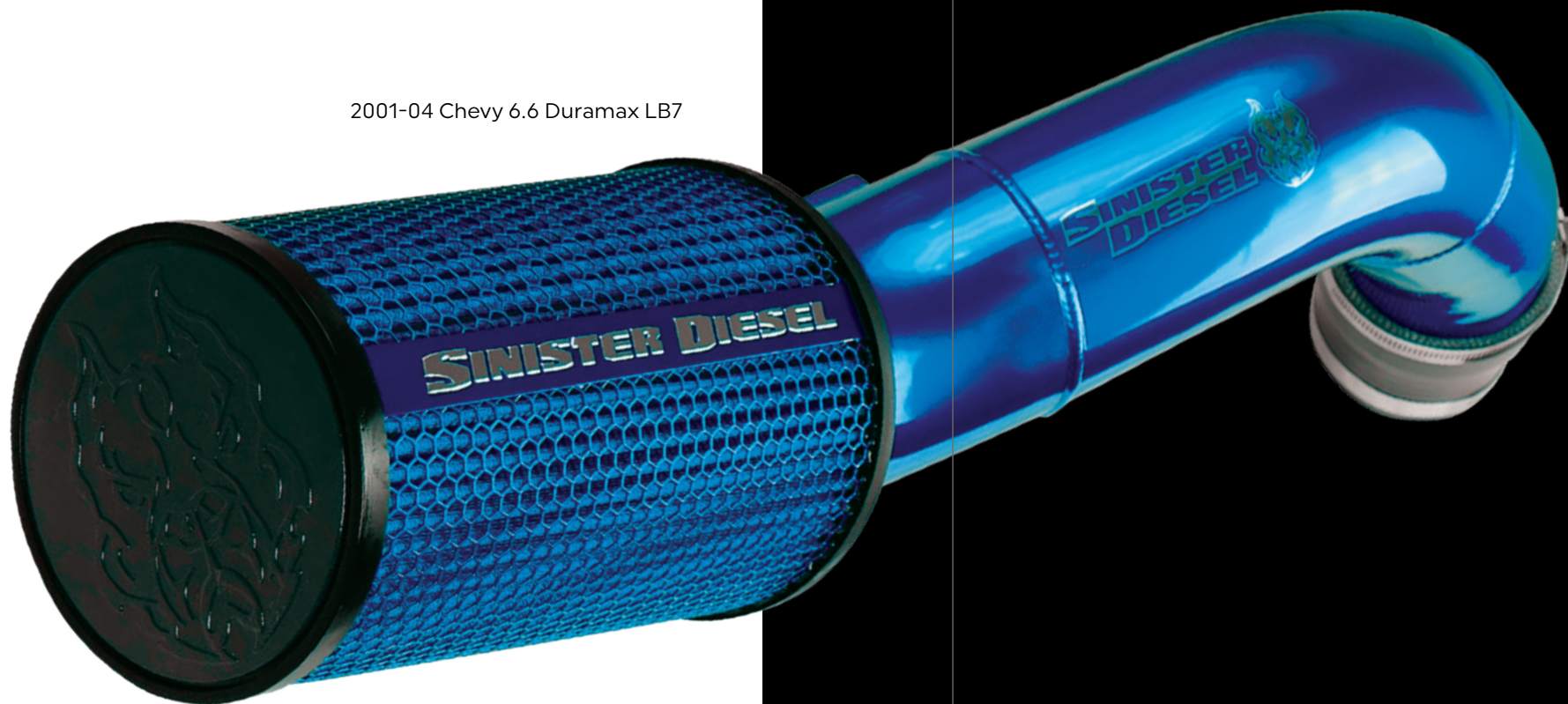


# ***GOLD AIR INTAKES***

Strength, performance, durability, and fit are the hallmarks of all Sinister parts. Our Cold Air Intakes are no exception. While other brands use plastic and rubber parts, our intakes are made of mandrel bent aluminum tubing and silicone couplers for maximum airflow and durability. Plus, our Intakes are manufactured in-house for the highest quality control and the lowest tolerance variability.



2001-04 Chevy 6.6 Duramax LB7



2004.5-05 Chevy 6.6 Duramax LLY



\*\*\* PAT. PENDING \*\*\*

# INJECTORS



2001-16 Chevy 6.6 Duramax

2001-15 Chevy Duramax –  
Coolant Filter Kit



# FILTRATION

Keep your engine and components running clean mile after mile with these oil and coolant filter kits. Every Sinister Oil Filter Kit meets or exceeds factory specifications. Plus, installing a Coolant Filter Kit gives your entire cooling system an added level of protection. Our kits contain everything you need for simple installation and maintenance, making it easy to help your truck run better and last longer.

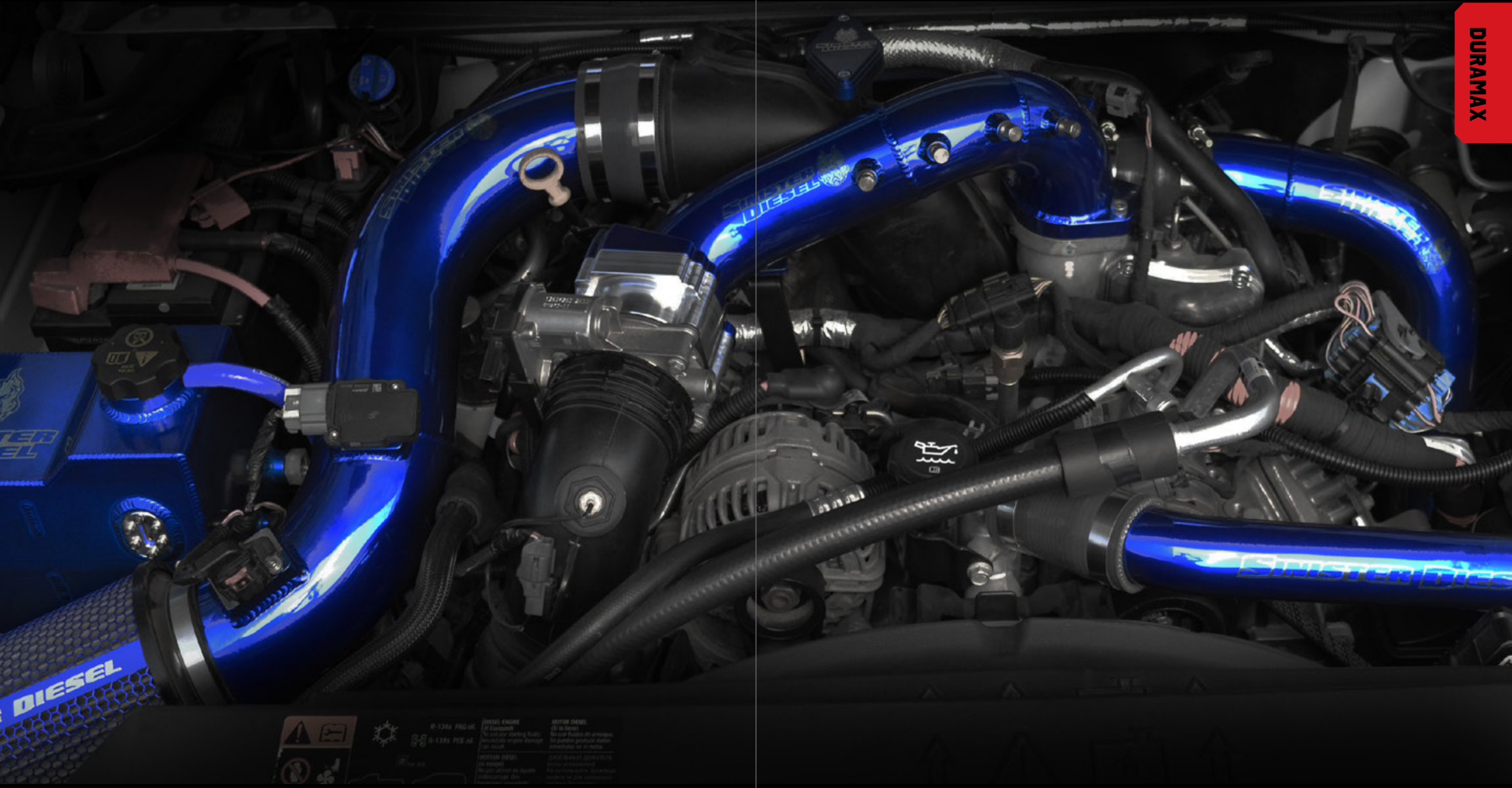


2001-16 Chevy/GMC 6.6  
Duramax 2500-3500 –  
CAT Fuel Filter Adaptor

DURAMAX



2016 Chevy 6.6L Duramax LML



DURAMAX

 	<b>W-1354 P30-00</b> W-1354 P30-00	<b>DIESEL ENGINE</b> 24 Valves No hot work starting fluid. No smoking engine during operation.	<b>DIESEL ENGINE</b> 24 Valves No hot work starting fluid. No smoking engine during operation.
 	<b>W-1354 P30-00</b> W-1354 P30-00	<b>DIESEL ENGINE</b> 24 Valves No hot work starting fluid. No smoking engine during operation.	<b>DIESEL ENGINE</b> 24 Valves No hot work starting fluid. No smoking engine during operation.



# COOLANT SYSTEM

Sinister Coolant Reservoirs are made from 6061 aircraft grade aluminum which is TIG welded and pressure tested making it stronger than plastic factory tanks. In addition, aluminum dissipates heat better than other materials. Features a sight glass for easy level inspection. These are direct bolt-on replacements for your stock reservoir and can be installed with basic tools in less than 30 minutes.

All Degas Bottles come with a Lifetime Warranty.



Optional Coolant Reservoir Cap



2001-15 Chevy 6.6 Duramax – Coolant Reservoir

\*\*\* PAT. PENDING \*\*\*



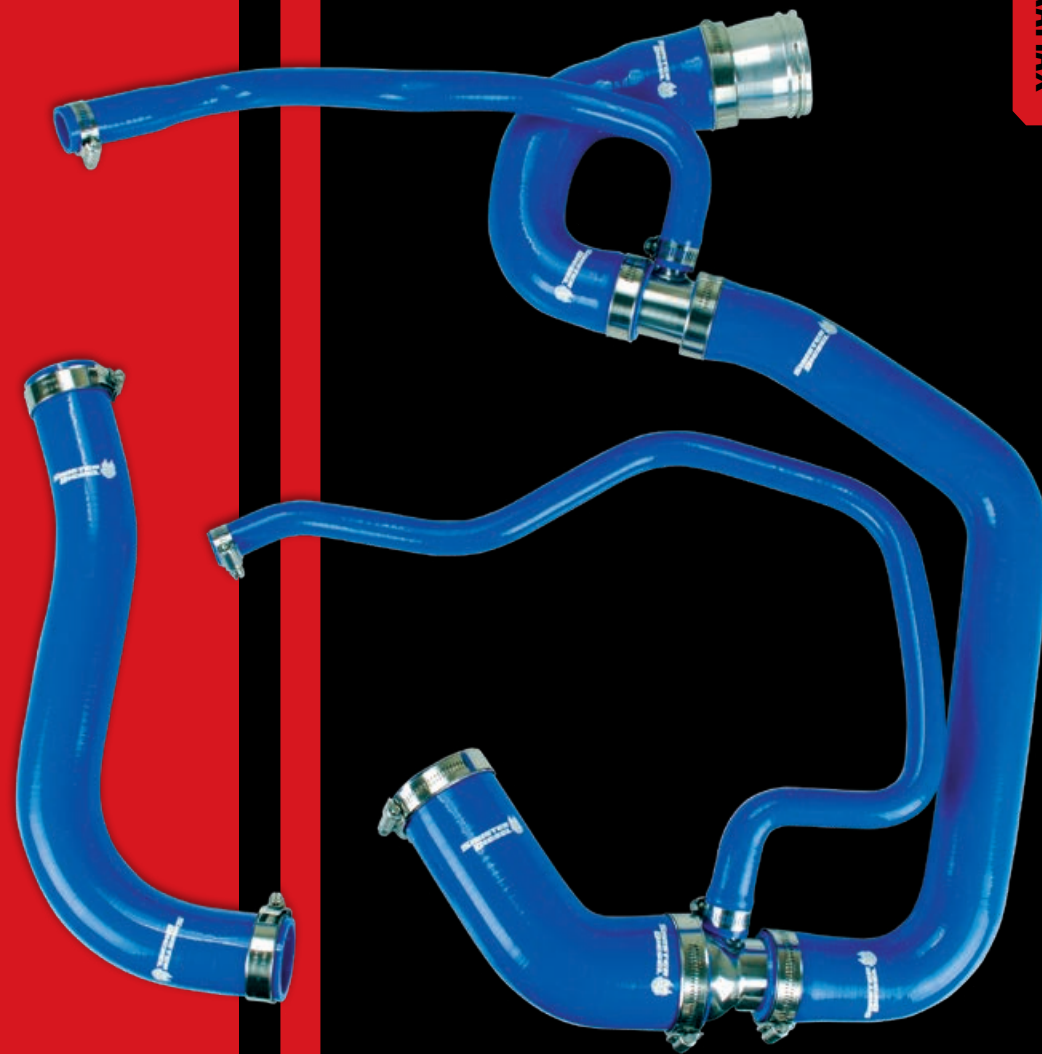


2011-15 LML Aluminum Radiator Tube



2001-05 LB7/LLY Aluminum Radiator Tube

2001-15 Duramax Radiator Hoses



**DURAMAX**



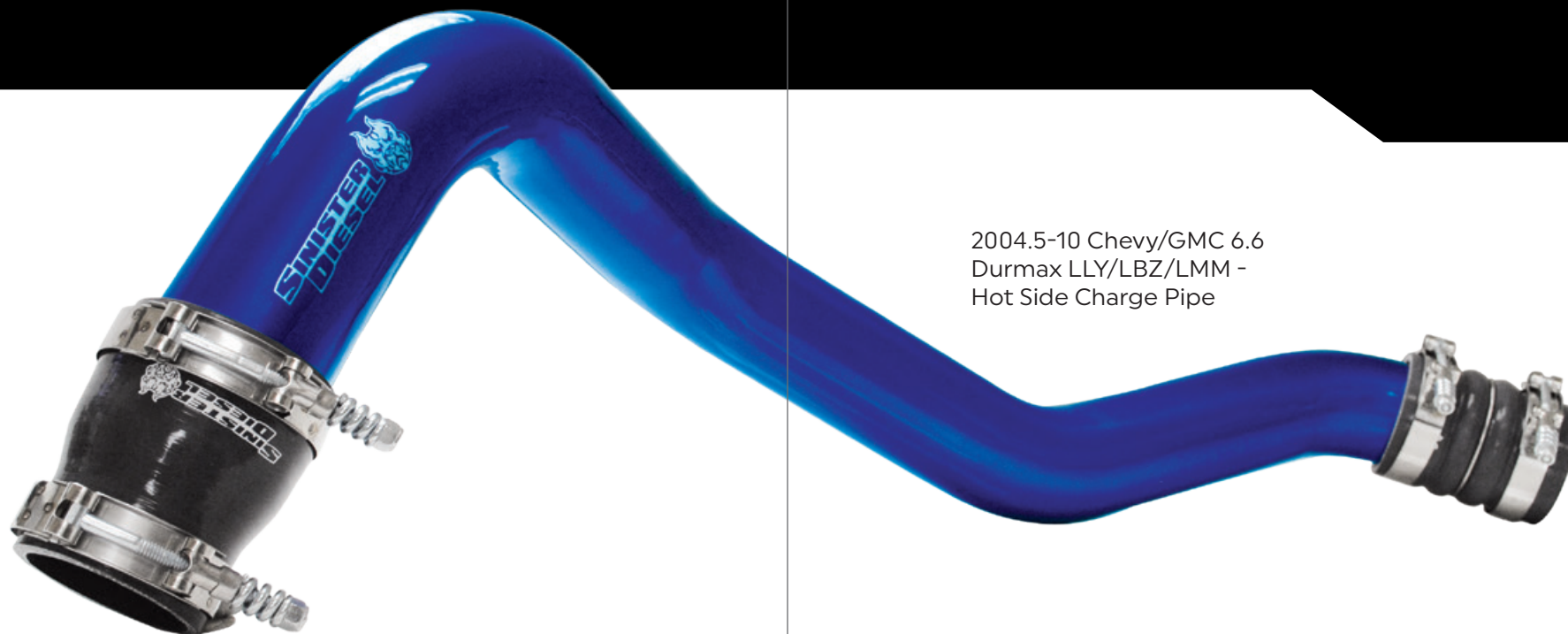
# INTERCOOLER PIPES



Aluminum construction for a lifetime of rust-free performance; heat dissipation and mandrel bent, powder coated aluminum tubing for minimal turbulence and maximum air flow; heavy duty five-ply silicone boots to handle increased boost pressures; stainless steel spring clamps to resist corrosion and increase clamping strength; you get all this and more when you add Sinister Diesel Charge Pipes to your rig.



2011-16 Chevy 6.6 Duramax LML - Hot Side Charge Pipes  
(Also available for LLY/LBZ/LMM)



2004.5-10 Chevy/GMC 6.6 Duramax LLY/LBZ/LMM - Hot Side Charge Pipe

DURAMAX

# EGR COOLERS

Our advanced technology EGR Coolers solve the problem of cracked, leaking, and overheating stock exhaust coolers. We've scrapped the factory internal mesh system in favor of our unique tube design which improves performance and reliability. Plus, all our EGR Coolers are assembled at Sinister's California location so you're sure to get a leak free, perfect fit every time. These upgraded, stainless steel TIG welded EGR Coolers are backed by a lifetime warranty.



2006-07 Chevy/GMC 6.6 Duramax LBZ

2004.5-05 Chevy/GMC 6.6 Duramax LLY



2007.5-10 Chevy/GMC 6.6 Duramax LMM  
(Van and Cab/Chassis options available)





2001-15 Chevy/GMC LB7/LLY/LBZ/LMM/  
LML/ZF6 – Transmission Housing Support



# MOUNTS & SUPPORTS

Improve the feel, handling and longevity of your rig with Sinister high performance mounts and supports. These parts feature heavy-duty components that enhance your ride and add years of reliable performance to your vehicle. Plus, they're polished and powder coated Sinister Blue® for corrosion resistance and a clean look on your truck.



2001-10 Chevy/GMC 2500-3500 –  
Solid Centerlink

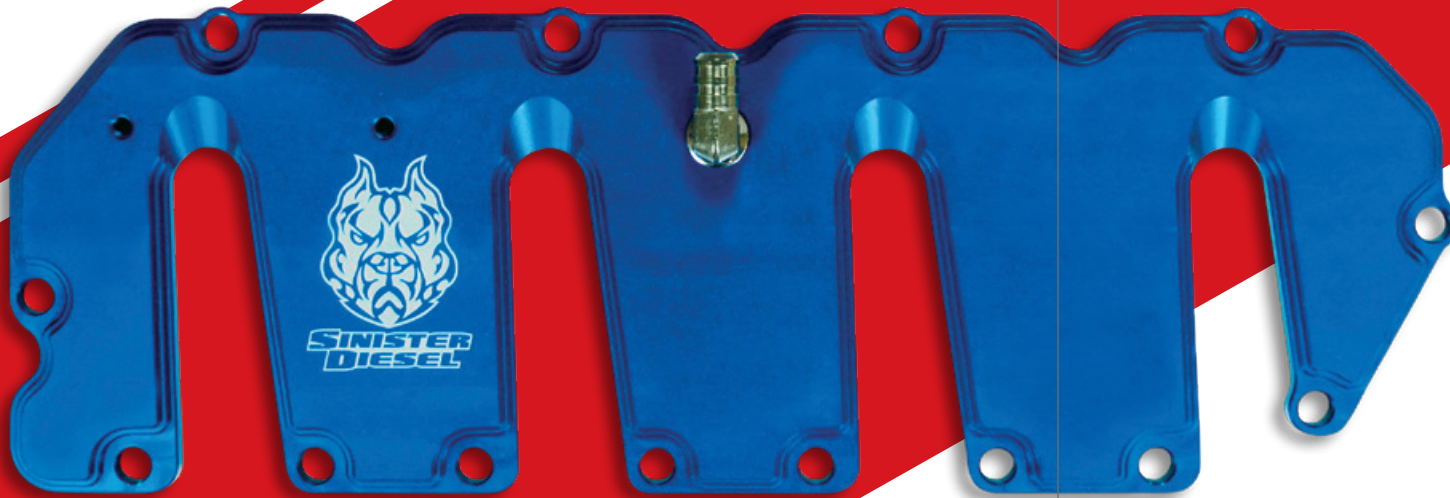
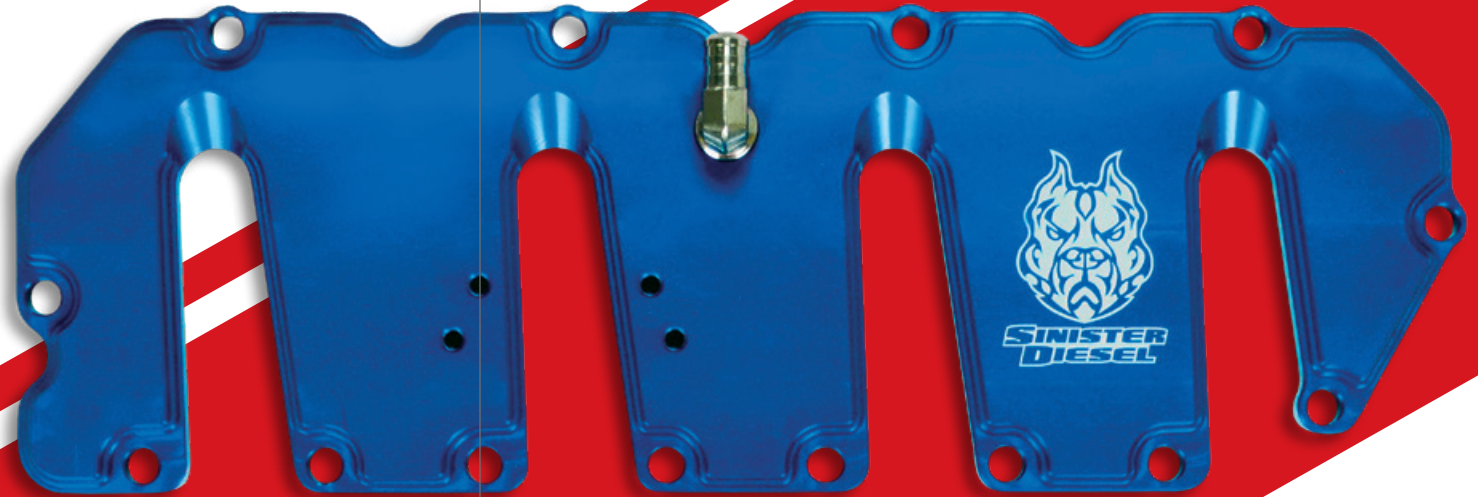


2001-10 Chevy Duramax LB7/LLY  
LBZ/LMM – Motor Mounts

DURAMAX

# VALVE COVERS

Dress up your engine bay with a pair of Sinister Diesel® Valve Covers. Manufactured in Sinister's California location for maximum quality control, they're made of CNC machined billet aluminum for maximum heat dissipation. The covers are anodized Sinister Blue and feature the Sinister Diesel logo.



2004.5-10 Chevy 6.6L Duramax – Valve covers

DURAMAX



2004.5-10 Chevy/GMC 6.6 Duramax – Fuel Rail Race Plug  
(Also available for 2007.5-12 Dodge 6.7 Cummins)



2001-10 Chevy/GMC 6.6 Duramax – Fuel Bleed Screw



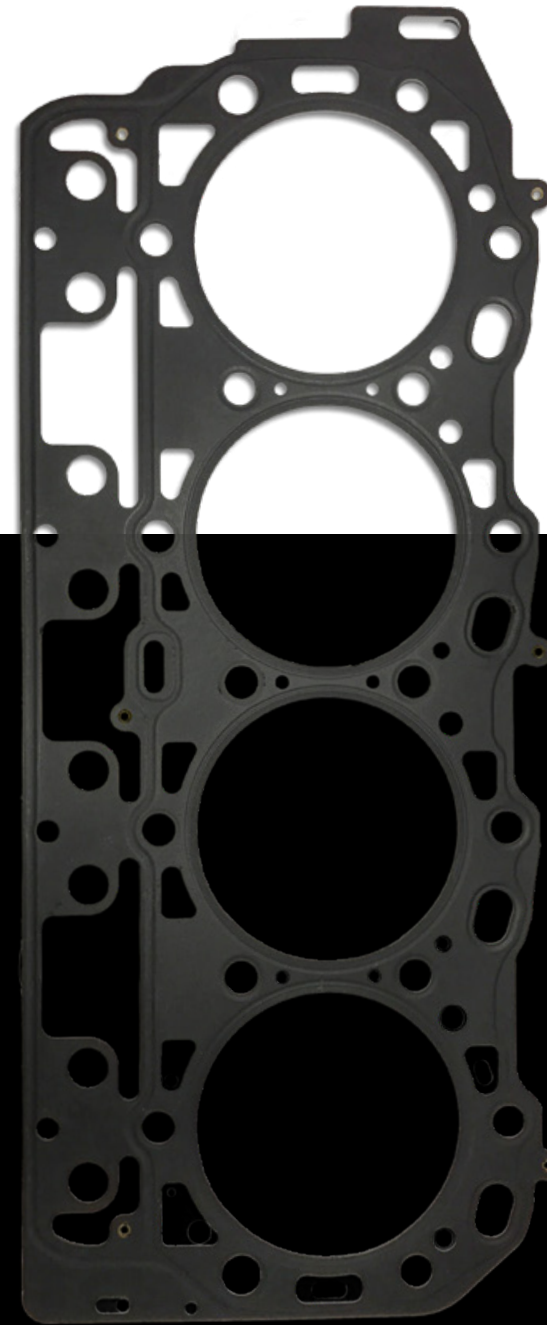
# ***SOLUTION KITS***

Fixing all major truck problems is as easy as ordering one of our Solution Kits. We've eliminated the need for you to spend hours creating lengthy parts lists and shopping around for the best prices. These kits include everything you need to simplify your project. Best of all, they save you money.



2001-'04.5 Chevy 6.6L LB7 Duramax Injector Package

Kits also available for:  
'04.5-'10 Duramax



2001-16 Chevy/GMC 6.6 Duramax

# ***HEAD GASKETS***

These head gaskets are made from five layers of stainless steel and feature a Fluoroelastomer (FKM) coating which keeps the engine block and cylinder head completely sealed to each other. In addition, these gaskets feature a durable "black diamond" coating which seals rough surface finishes. This design keeps cost down and performance up with improved durability, reduced chance of future head gasket problems and improved engine performance.



2001-2017 Duramax 320A Alternator  
(250A also available)

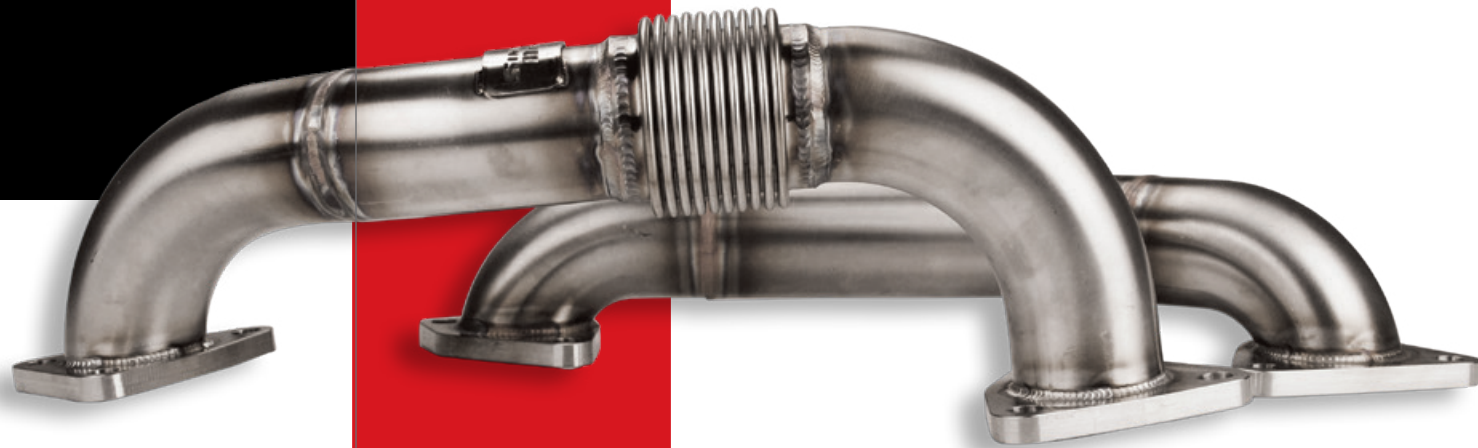
## ALTERNATORS

Producing greater amperage and better than stock performance, this new Sinister® Alternator features an upgraded high output regulator; high temp bearings; an upgraded stator; and a durable powder-coated or anodized Sinister Blue® billet cover for longevity and a custom look under the hood.



## UP PIPES

The problem with factory Up Pipes is their tendency to crack and leak. You won't have that problem with Sinister® Up Pipes. Our Up Pipes feature dual-wall bellow construction to eliminate leaks and improve longevity. Sinister Up Pipes are constructed of stainless steel for corrosion resistance. They're also mandrel bent for maximum exhaust flow. Because they are fully TIG welded and back-purged, our Up Pipes withstand the toughest conditions and are backed by a lifetime warranty.



2001-15 Chevy/GMC 6.6 Duramax – Up Pipes  
(Also sold separately)





2004.5-05 Chevy/GMC 6.6  
Duramax LLY – Intake Tube



2011-15 Chevy/GMC 6.6  
Duramax – Intake Bridge



2006-10 Chevy/GMC 6.6  
Duramax LBZ/LMM – Intake Tube

## INTAKE ELBOWS

Sinister Diesel® Intake Elbows are designed and engineered to outperform the competition. Our elbows are made of mandrel bent aluminum with a CNC base-plate built to hold even the highest boost levels. Polished and powder coated Sinister Blue®, these elbows look as good as they perform.





**DODGE RAM**  
**CUMMINS**



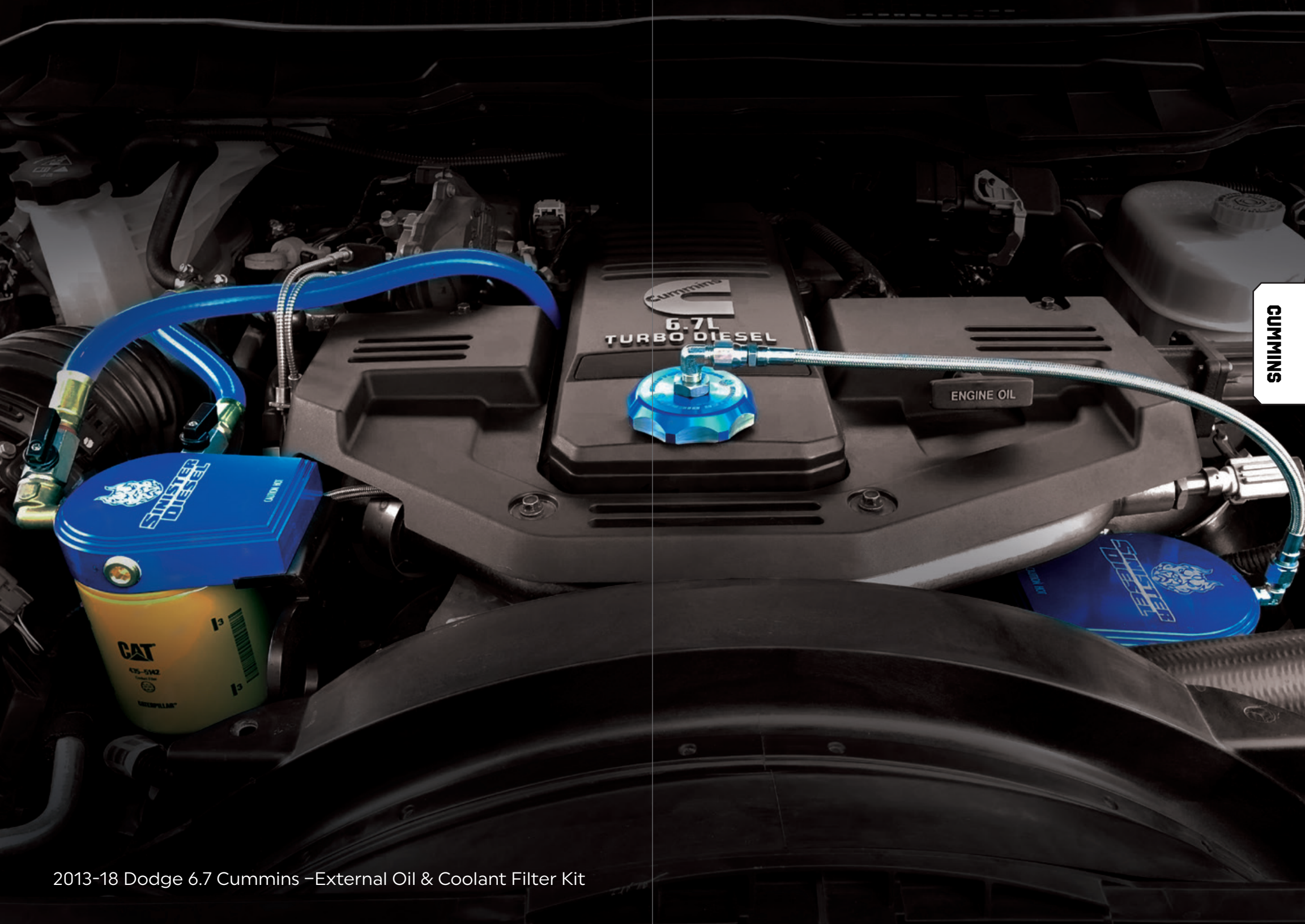
2004.5-07 Dodge 5.9 Cummins –  
CAT Fuel Filter Adaptor

## **FILTRATION**

Keep your engine and components running clean mile after mile with these oil and coolant filter kits. Every Sinister® Oil Filter Kit meets or exceeds factory specifications. Plus, installing a Coolant Filter Kit gives your entire cooling system an added level of protection. Our kits contain everything you need for simple installation and maintenance, making it easy to help your truck run better and last longer.







CUMMINS

2013-18 Dodge 6.7 Cummins -External Oil & Coolant Filter Kit



2003-07 Dodge 5.9 Cummins 2500-3500 – Coolant Filter Kit



2006-07 Dodge 5.9 Cummins – Oil Filter Kit

CUMMINS



2007.5-12 Dodge 6.7 Cummins – Coolant Filter Kit



# ALTERNATORS

Producing greater amperage and better than stock performance, this new Sinister® Alternator features an upgraded high output regulator; high temp bearings; an upgraded stator; and a durable powder-coated or anodized Sinister Blue® billet cover for longevity and a custom look under the hood.



1988-2018 Cummins 320A Alternator



2003-07 Dodge 5.9 Cummins



1998.5-02 Dodge 5.9 Cummins  
(1994-98 also available)

CUMMINS

# INTAKE ELBOWS

Sinister Diesel® Intake Elbows are designed and engineered to outperform the competition. Our elbows are made of mandrel bent aluminum with a CNC base-plate built to hold even the highest boost levels. Polished and powder coated Sinister Blue®, these elbows look as good as they perform.



2003-07 Dodge 5.9 Cummins – Hot & Cold Side Charge Pipes



# INTERCOOLER PIPES

Aluminum construction for a lifetime of rust-free performance; heat dissipation and mandrel bent, powder coated aluminum tubing for minimal turbulence and maximum air flow; heavy duty five-ply silicone boots to handle increased boost pressures; stainless steel spring clamps to resist corrosion and increase clamping strength; you get all this and more when you add Sinister Diesel® Charge Pipes to your rig.



CUMMINS

2010-12 Dodge 6.7 Cummins – Hot Side Charge Pipe



2007.5-09 Dodge 6.7 Cummins – Hot & Cold Side Charge Pipes





2007.5-18 Dodge 6.7 Cummins



\*\*\* PAT. PENDING \*\*\*



# COLD AIR INTAKES

Strength, performance, durability, and fit are the hallmarks of all Sinister® parts. Our Cold Air Intakes are no exception. While other brands use plastic and rubber parts, our intakes are made of mandrel bent aluminum tubing and silicone couplers for maximum airflow and durability. Plus, our Intakes are manufactured in-house for the highest quality control and the lowest tolerance variability.



1994-02 Cummins 5.9 Cummins



CUMMINS



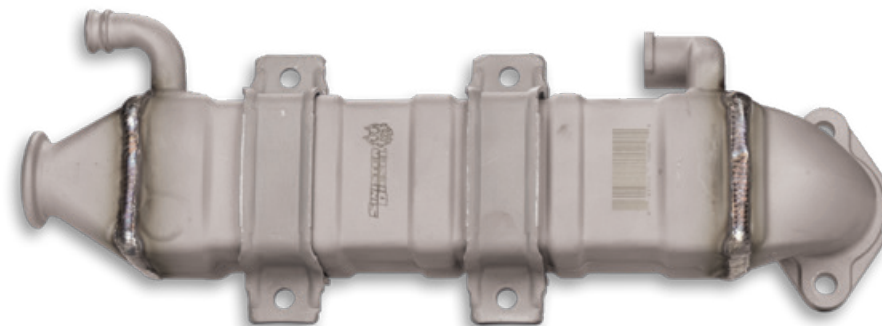
2004.5-07 Dodge 5.9 Cummins – Cold Air Intake

## ***RADIATOR TUBES***



2004-18 Cummins Aluminum Radiator Tube

## ***EGR COOLERS***



2007.5-12 Dodge 6.7 Cummins – EGR Cooler

**CUMMINS**

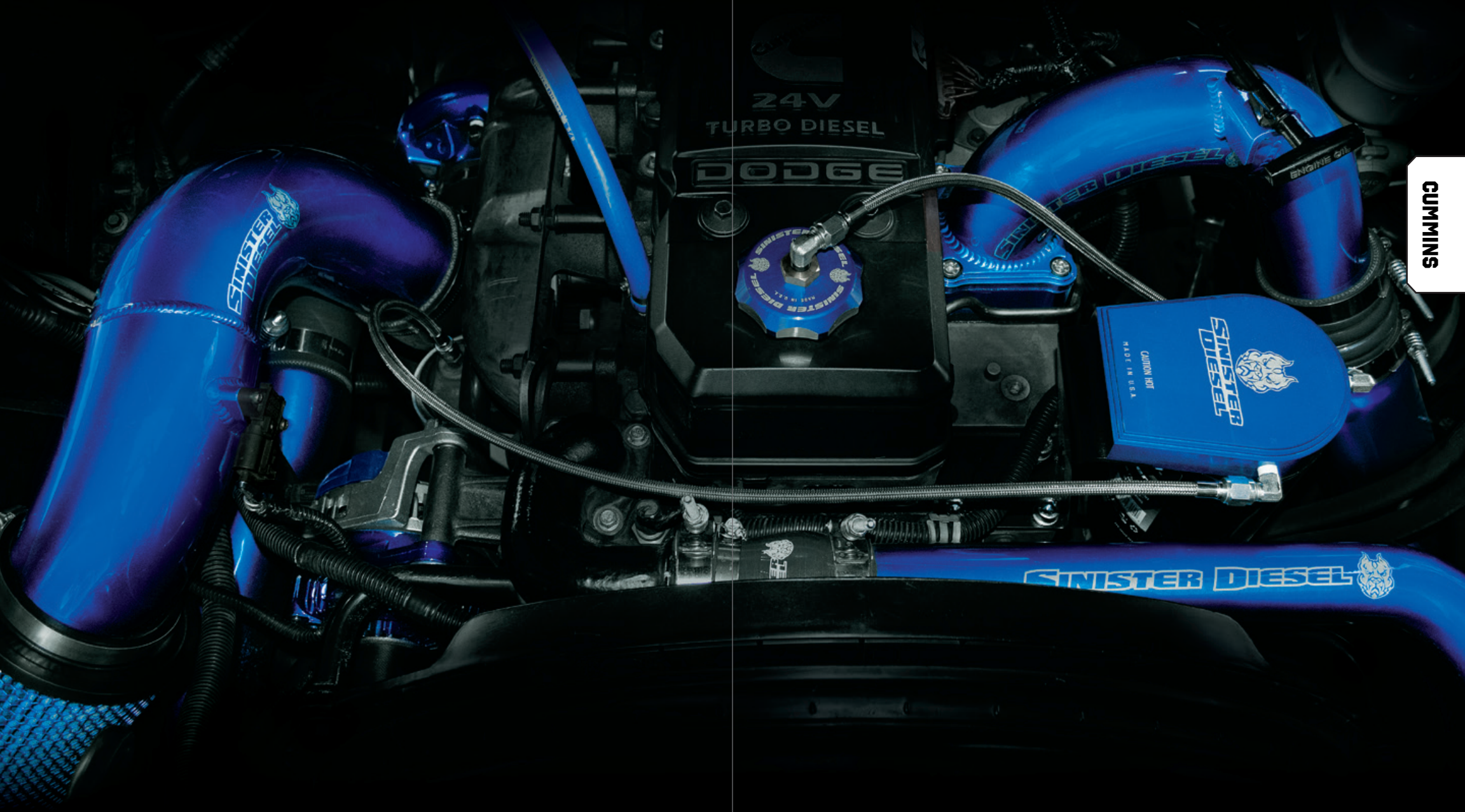
## ***LEVELING KIT***



1994-12 Dodge 5.9 & 6.7 Cummins – 2.5" Leveling Kit For 4WD  
(Also available in black)



2006 Dodge 5.9L Cummins

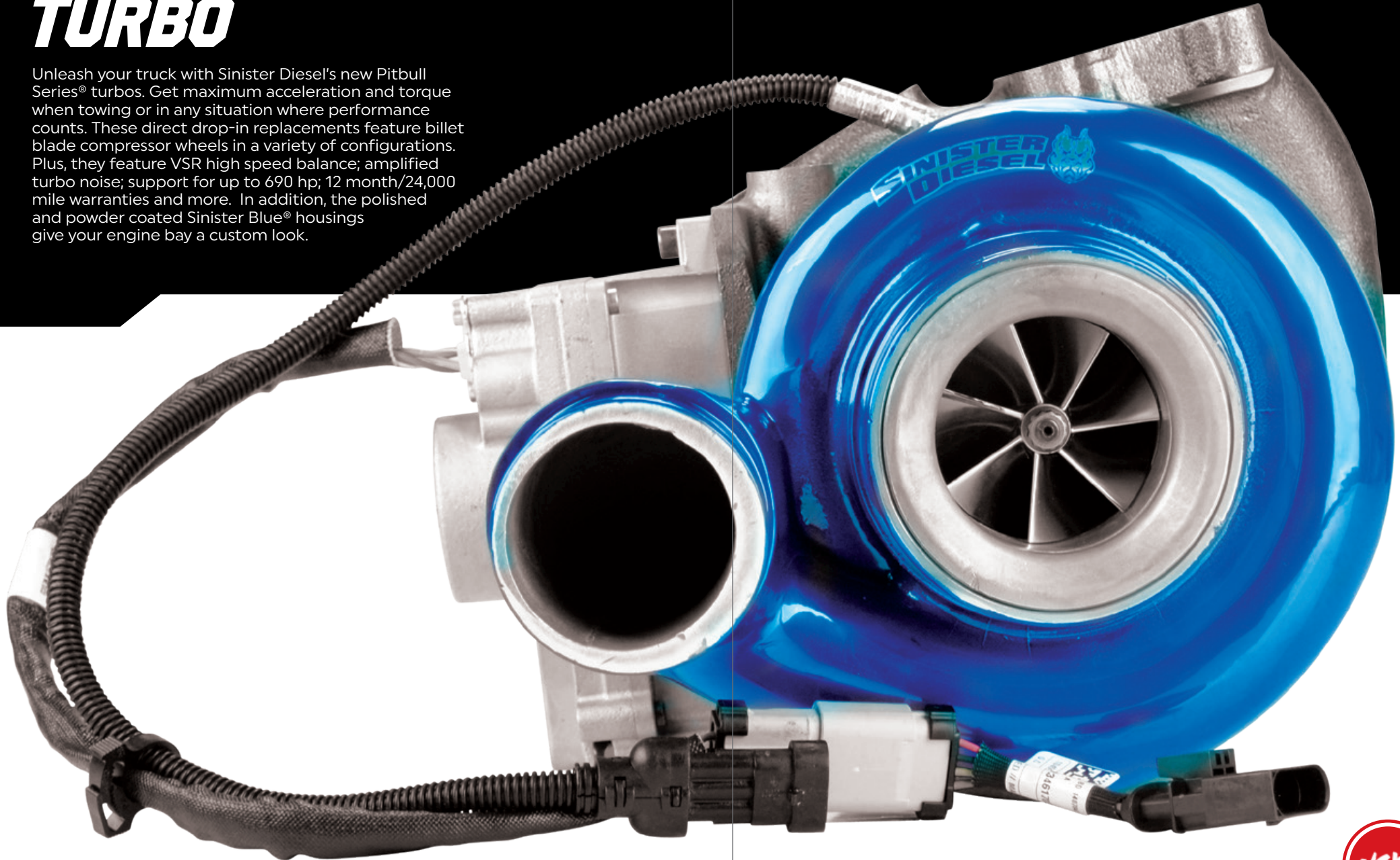


CUMMINS



# PITBULL SERIES® TURBO

Unleash your truck with Sinister Diesel's new Pitbull Series® turbos. Get maximum acceleration and torque when towing or in any situation where performance counts. These direct drop-in replacements feature billet blade compressor wheels in a variety of configurations. Plus, they feature VSR high speed balance; amplified turbo noise; support for up to 690 hp; 12 month/24,000 mile warranties and more. In addition, the polished and powder coated Sinister Blue® housings give your engine bay a custom look.

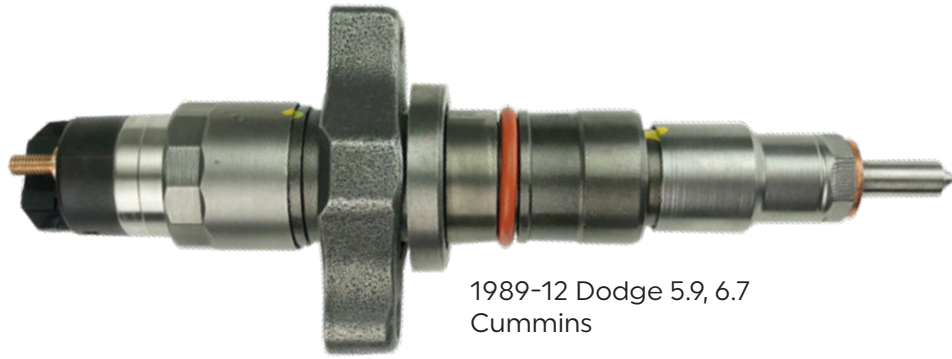


2003-18 Dodge 6.7 Cummins





# INJECTORS



1989-12 Dodge 5.9, 6.7  
Cummins

# CAPS



2013-16 Cummins - Fuel Fill Cap



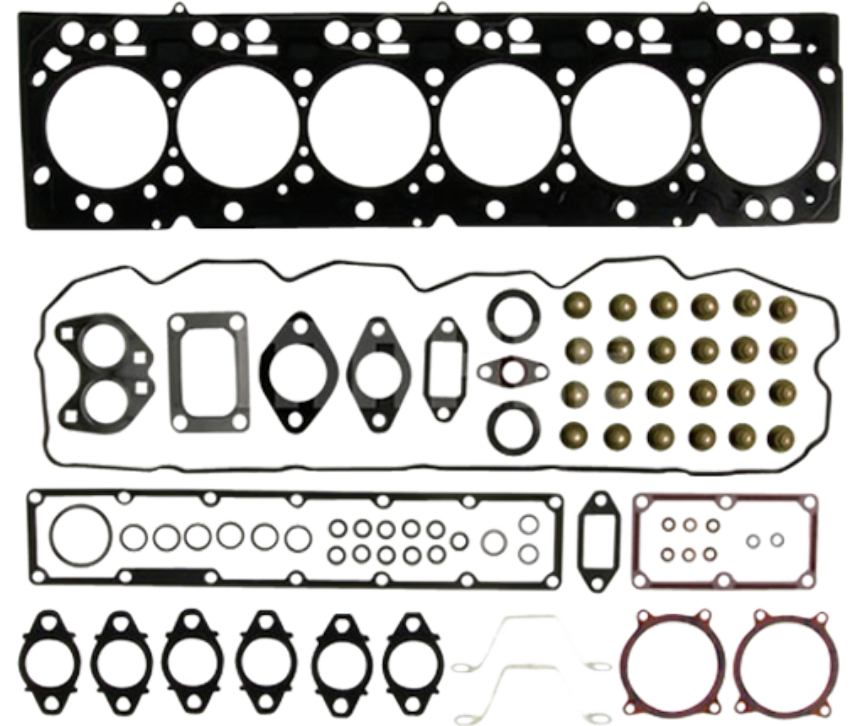
2013-18 Cummins -  
Coolant Reservoir Cap



1989-98 Dodge 5.9 Cummins -  
Oil Fill Cap

# SOLUTION KITS

Fixing all major truck problems is as easy as ordering one of our Solution Kits. We've eliminated the need for you to spend hours creating lengthy parts lists and shopping around for the best prices. These kits include everything you need to simplify your project. Best of all, they save you money.



2007.5-12 Dodge 6.7L Cummins -  
Head Gasket Kit & ARP Head Stud combo

(Kit also available for 98.5-07 Dodge 5.9L)

CUMMINS

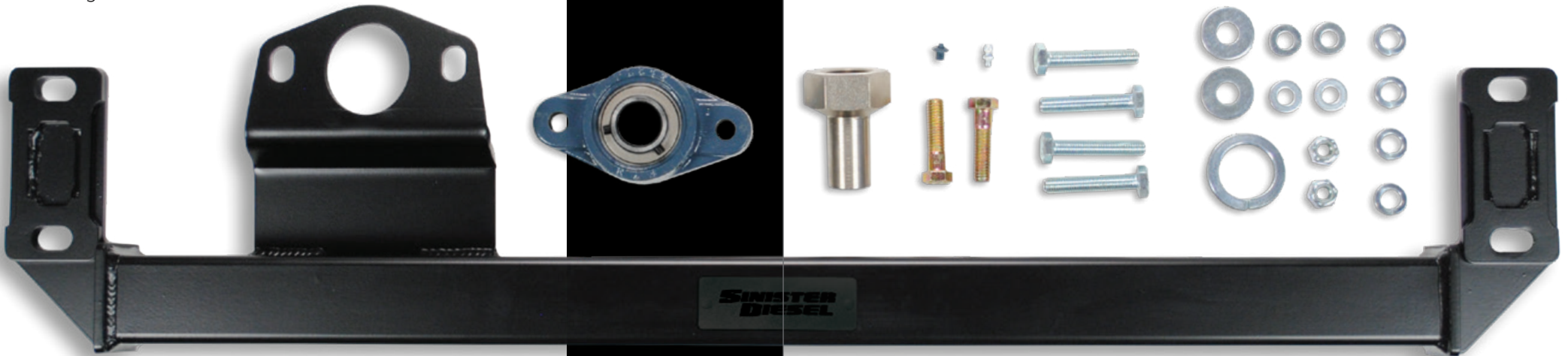
# STEERING

Fixing all major truck problems is as easy as ordering one of our Solution Kits. We've eliminated the need for you to spend hours creating lengthy parts lists and shopping around for the best prices. These kits include everything you need to simplify your project. Best of all, they save you money.



1994-02 Dodge 2500-3500 4WD – Steering Stabilizer

Also available for:  
2003-09 Dodge 2500-3500 4WD  
2010-12 Dodge 2500-3500 4WD  
2013-17 Dodge 2500-3500 4WD



94-12 Dodge 6.7 Cummins – Adjustable Track Bar

**GUMMINS**





**UNLEASH  
YOUR  
PROFITS!**





CARB EO. NO. D-721-1



2003-07 Ford 6.0 Powerstroke



\*\*\* PAT. PENDING \*\*\*



2008-10 Ford 6.4 Powerstroke

# FORD POWERSTROKE

## COLD AIR INTAKES



Strength, performance, durability, and fit are the hallmarks of all Sinister® parts. Our Cold Air Intakes are no exception. While other brands use plastic and rubber parts, our intakes are made of mandrel bent aluminum tubing and silicone couplers for maximum airflow and durability. Plus, our Intakes are manufactured in-house for the highest quality control and the lowest tolerance variability.

POWERSTROKE



2017+ Ford 6.7 Powerstroke



CARB EO. NO. D-721-3



1999.5-03 Ford 7.3 Powerstroke



2011-16 Ford 6.7 Powerstroke

POWERSTROKE



2011-15 Ford 6.7 Powerstroke – Coolant Filter Kit



2003-07 Ford 6.0 Powerstroke – Coolant Filter Kit

# FILTRATION



Keep your engine and components running clean mile after mile with these oil and coolant filter kits. Every Sinister®Oil Filter Kit meets or exceeds factory specifications. Plus, installing a Coolant Filter Kit gives your entire cooling system an added level of protection. Our kits contain everything you need for simple installation and maintenance, making it easy to help your truck run better and last longer.



New

After 5,000 miles

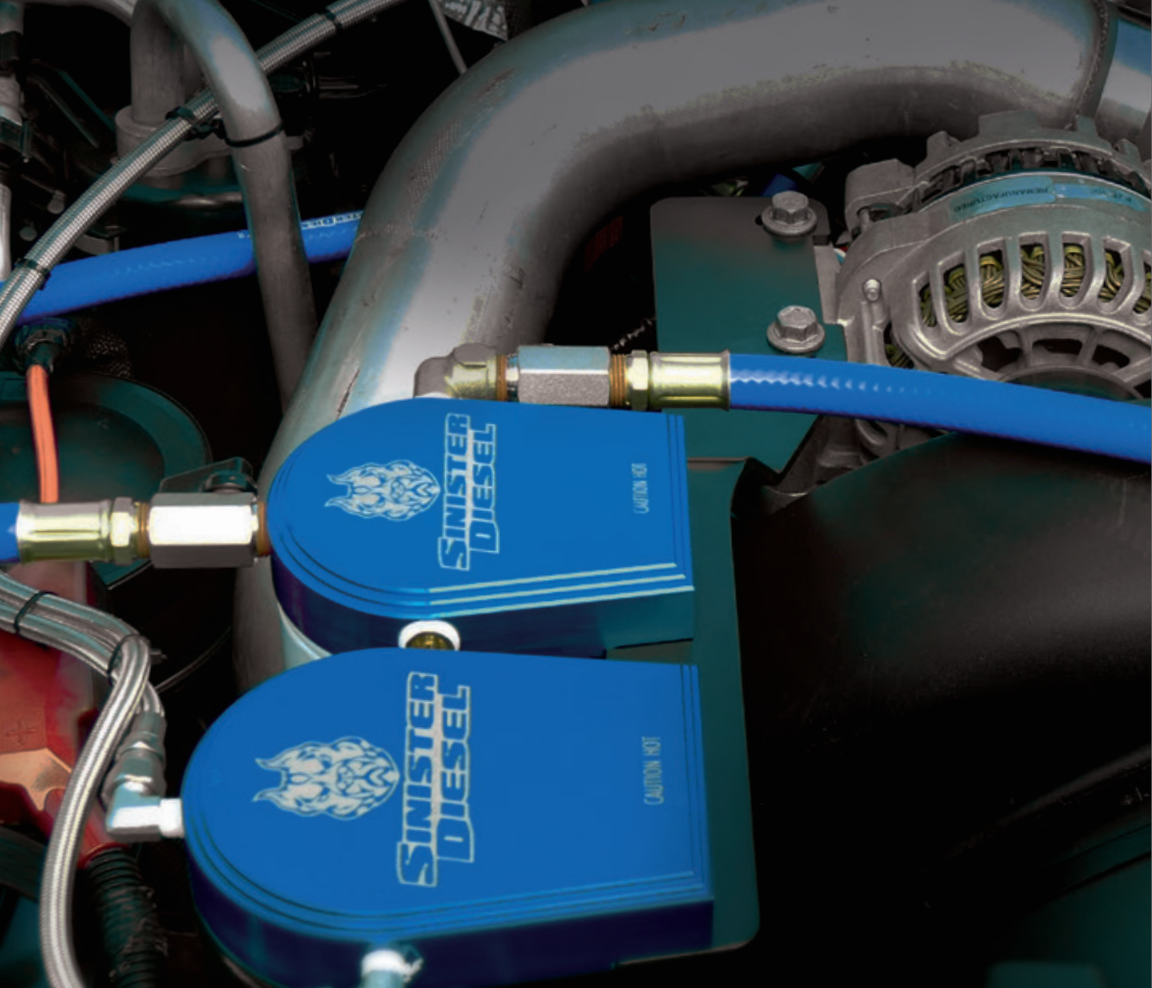




2008-10 Ford 6.4 Powerstroke F250-450 – Coolant Filter Kit



1999.5-03 Ford 7.3 Powerstroke – Coolant Filter Kit



POWERSTROKE

2003-07 Ford 6.0 Powerstroke – Oil & Coolant Filter Kit



2003-10 Ford 6.0 Van E250-350 – Coolant Filter Kit



2003-07 Ford 6.0 Powerstroke – Oil Filter Kit



1999.5-03 Ford 7.3 Powerstroke – External Oil Filter Kit



2008-10 Ford 6.4 Powerstroke – Oil Filter Kit

POWERSTROKE



## **PITBULL SERIES<sup>®</sup>** **TURBOS**

Unleash your truck with Sinister Diesel's new Pitbull Series turbos. Get maximum acceleration and torque when towing or in any situation where performance counts. These direct drop-in replacements feature billet blade compressor wheels in a variety of configurations. Plus, they feature VSR high speed balance; amplified turbo noise; support for up to 690 hp; 12 month/24,000 mile warranties and more. In addition, the polished and powder coated Sinister Blue<sup>®</sup> housings give your engine bay a custom look.



2003-07 Ford 6.0 Powerstroke – Pitbull Series 2

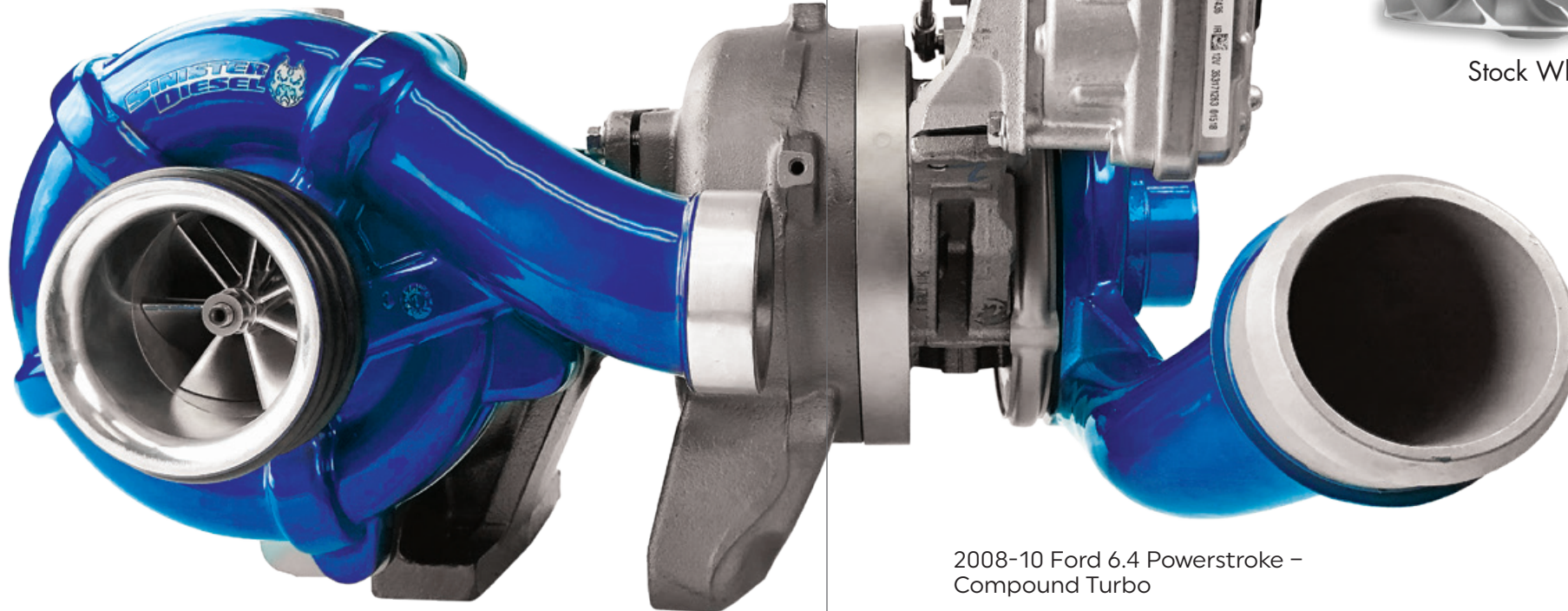
2003-07 Ford 6.0 Powerstroke – Pitbull Series 1



**POWERSTROKE**



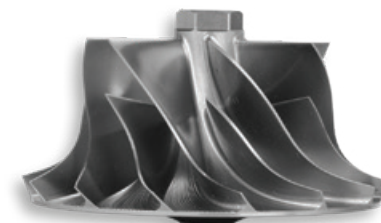
1999.5-03 Ford 7.3 Powerstroke



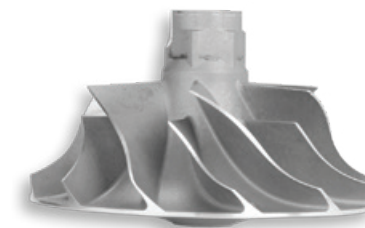
2008-10 Ford 6.4 Powerstroke – Compound Turbo



2011-16 Ford 6.7 Powerstroke Turbo Coolant Feed Line



SDW Wheel

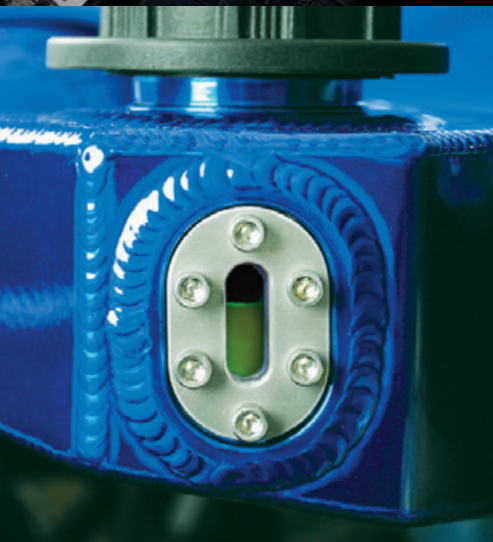


Stock Wheel





\*\*\* PAT. PENDING \*\*\*



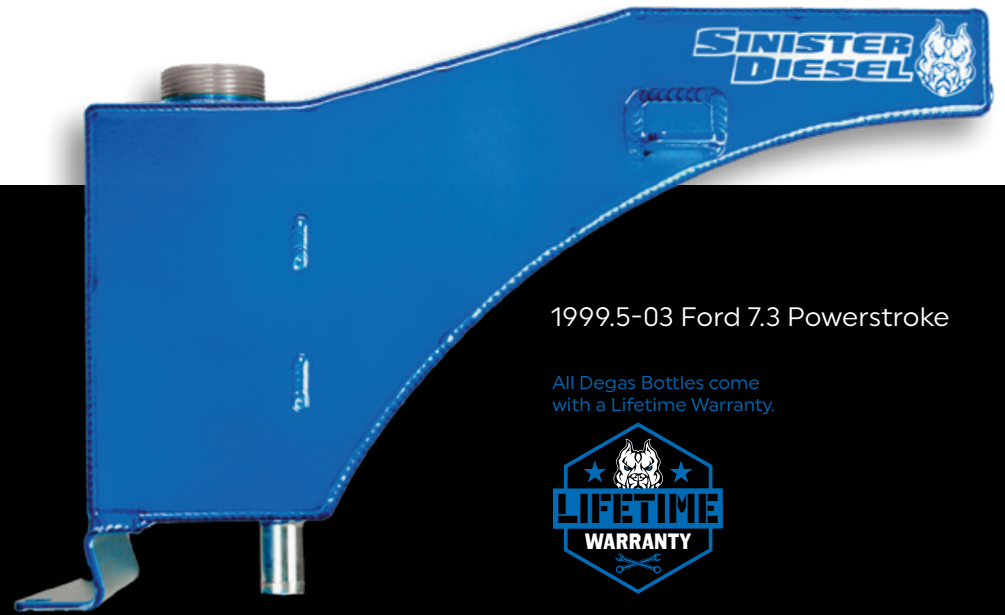
2003-2007 Ford 6.0 Powerstroke



Sinister Caps (Optional)

# COOLANT SYSTEMS

Sinister® Coolant Reservoirs are made from 6061 aircraft grade aluminum which is TIG welded and pressure tested making it stronger than plastic factory tanks. In addition, aluminum dissipates heat better than other materials. Features a sight glass for easy level inspection. These are direct bolt-on replacements for your stock reservoir and can be installed with basic tools in less than 30 minutes.

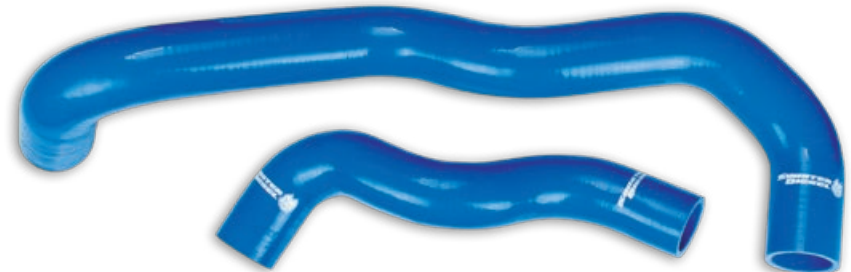


1999.5-03 Ford 7.3 Powerstroke

All Degas Bottles come with a Lifetime Warranty.



POWERSTROKE



2003-07 Powerstroke Radiator Hoses





2008-10 Ford 6.4 Powerstroke –  
Degas Bottle

# INTERCOOLER PIPES



Aluminum construction for a lifetime of rust-free performance; heat dissipation and mandrel bent, powder coated aluminum tubing for minimal turbulence and maximum air flow; heavy duty five-ply silicone boots to handle increased boost pressures; stainless steel spring clamps to resist corrosion and increase clamping strength; you get all this and more when you add Sinister Diesel® Charge Pipes to your rig.

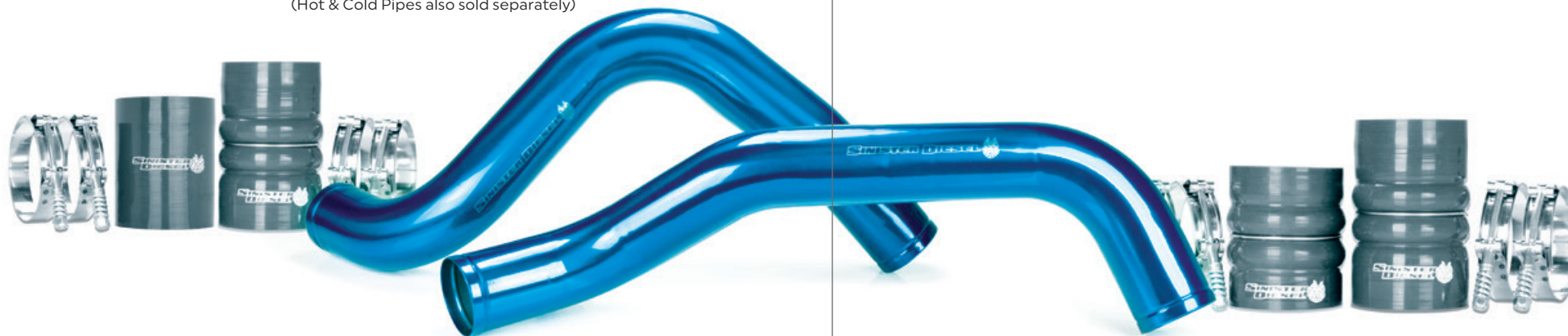


2011-18 Ford 6.7 Powerstroke

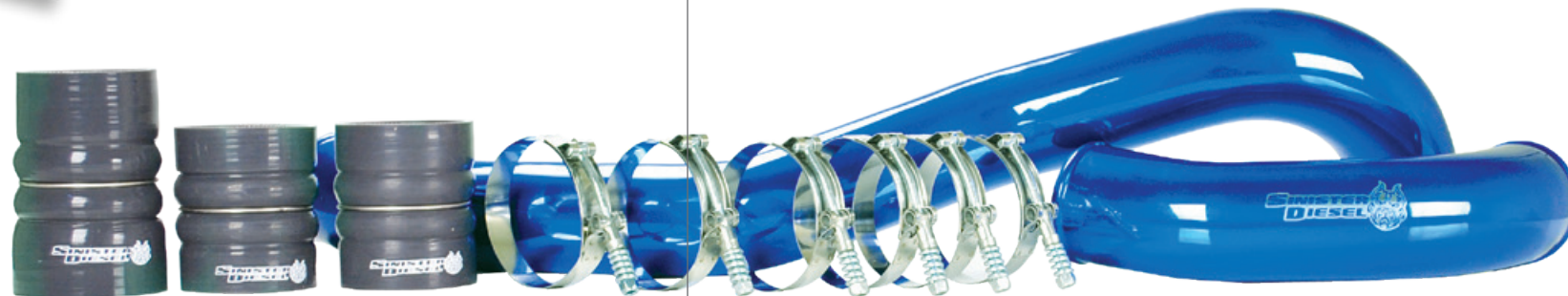
\*\*\* PAT. PENDING \*\*\*



1999.5-03 Ford 7.3 Powerstroke  
(Hot & Cold Pipes also sold separately)



2003-07 Ford 6.0 Powerstroke  
(Hot & Cold Sides also sold separately)



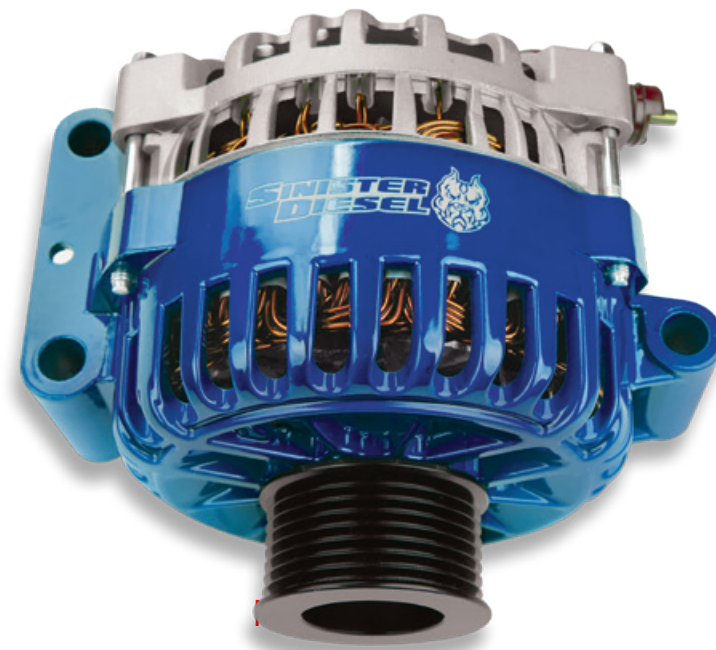
2008-10 Ford 6.4 Powerstroke  
(Cold Side also available)



2003-07 Ford Powerstroke 6.0 – Billet

# ALTERNATORS

Producing greater amperage and better than stock performance, this new Sinister alternator features an upgraded high output regulator; high temp bearings; an upgraded stator; and a durable powder-coated or anodized Sinister Blue billet cover for longevity and a custom look under the hood.



2008-10 Ford 6.4 Powerstroke



1994-2018 Powerstroke 200A-320A

POWERSTROKE



# EXHAUST KITS

Exhaust Kits by Sinister Diesel® are made from corrosion-resistant 409 stainless steel with high chromium and nickel content providing extreme durability. You'll appreciate that toughness if you live in climates where roads are salted in winter. We also include a muffler, a muffler delete pipe, and a polished 304 stainless steel tip. Wherever you live, you'll get better horsepower, cooler EGTs, and an aggressive, throaty sound with a new Sinister® Exhaust.



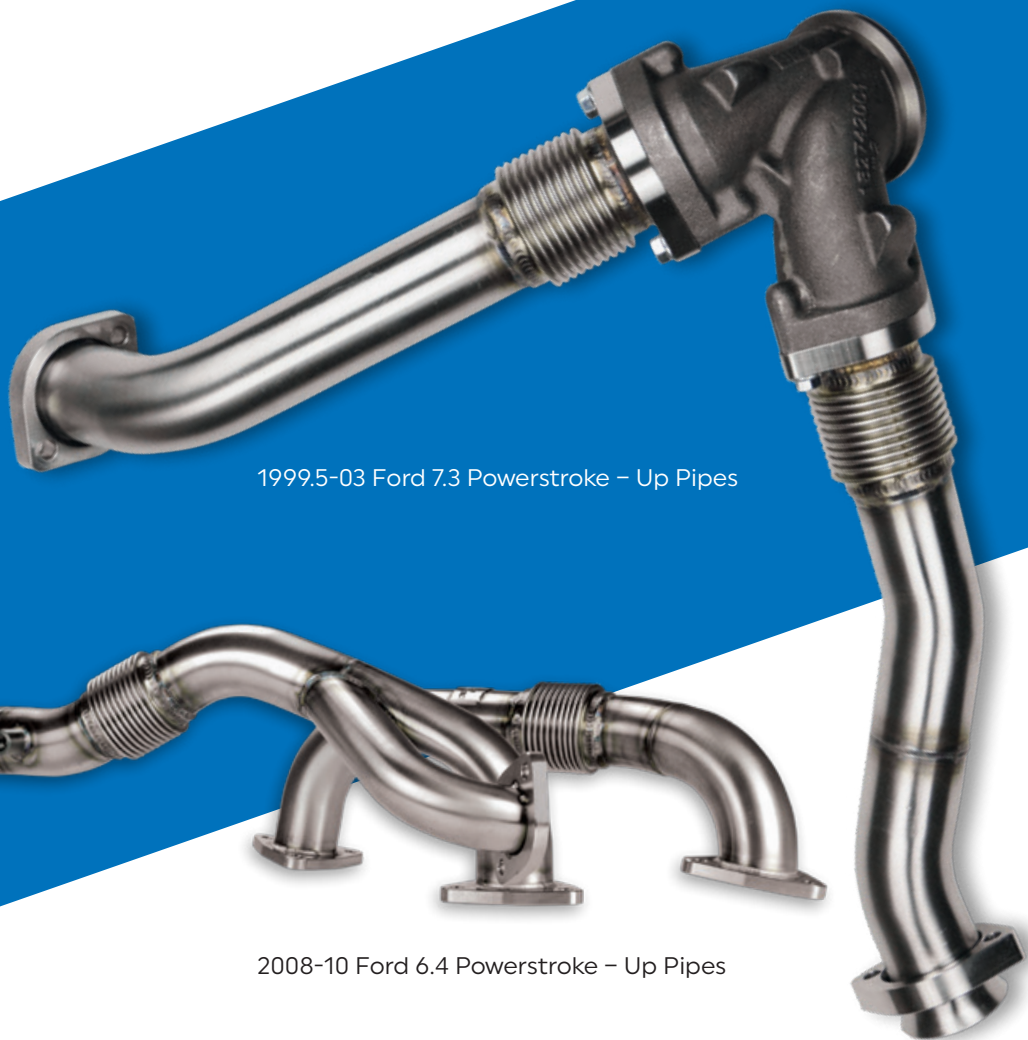
#### AVAILABLE FOR:

- 1999.5-03 Ford 7.3 Powerstroke 4"
- 2003-05 Ford 6.0 Excursion 4"  
(Retains CAT)
- 2003-07 Ford 6.0 SuperDuty 4" & 5"

# UP PIPES



The problem with factory Up Pipes is their tendency to crack and leak. You won't have that problem with Sinister® Up Pipes. Our Up Pipes feature dual-wall bellow construction to eliminate leaks and improve longevity. Sinister Up Pipes are constructed of stainless steel for corrosion resistance. They're also mandrel bent for maximum exhaust flow. Because they are fully TIG welded and back-purged, our Up Pipes withstand the toughest conditions and are backed by a lifetime warranty.



1999.5-03 Ford 7.3 Powerstroke – Up Pipes

2008-10 Ford 6.4 Powerstroke – Up Pipes

2003-07 Ford 6.0 Powerstroke – Y-Pipe



(EGR Provision)

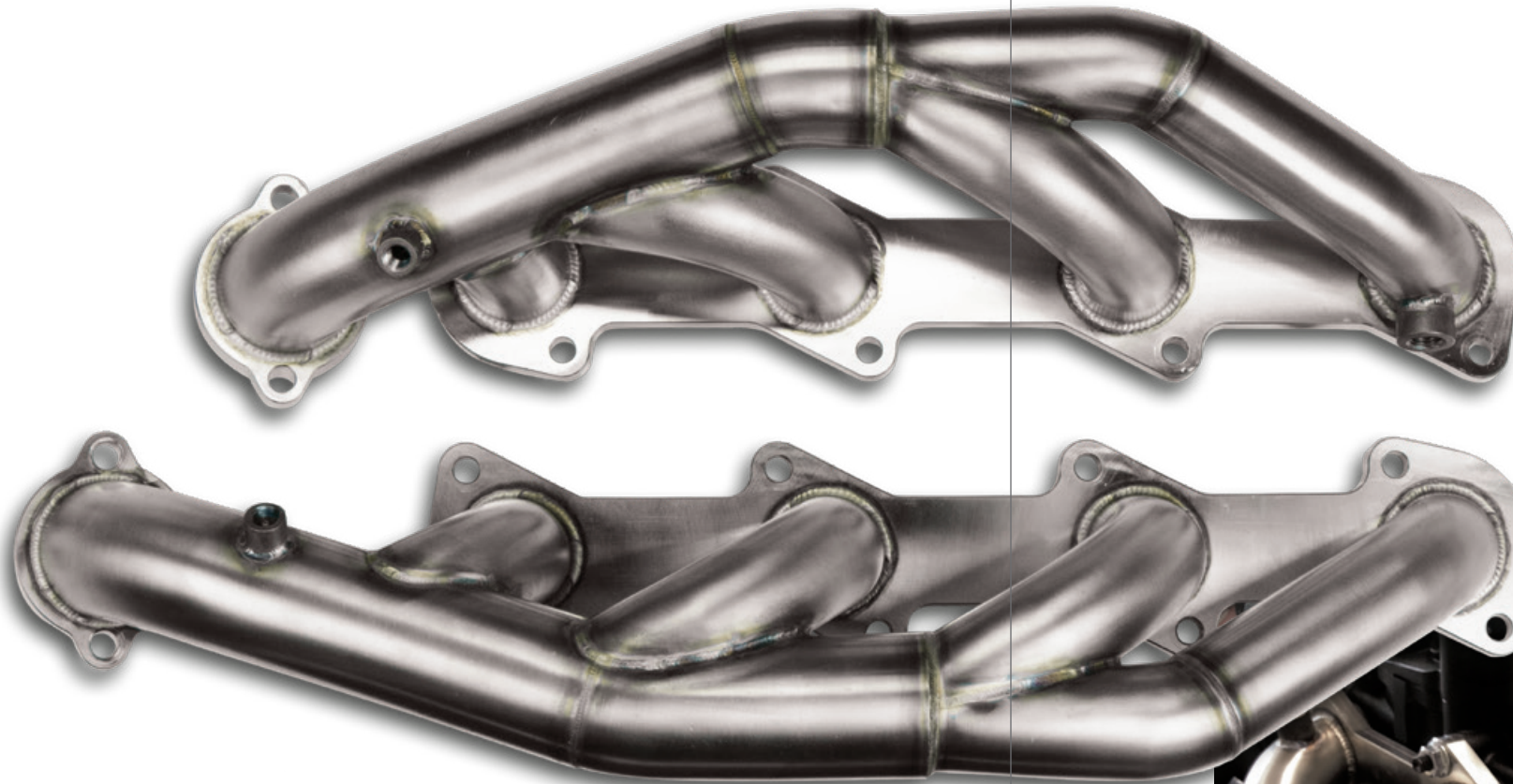
POWERSTROKE

# Y PIPES

Independent dyno tests show Sinister® Y-Pipes can add up to 65 hp and 148 lbs-ft of torque over stock at 2300 rpm. When installed on a truck with a performance tune, those numbers jump to 121 hp and 289 lbs-ft of torque. All of our Y-Pipe kits are built with solid stainless steel CNC flanges and stainless steel tubing. They include dual wall bellows and are fully TIG welded on a fixture as well as back-purged for the highest quality and strongest welds possible. CARB EO. PENDING ???







CARB EO. NO. D-721-2

2003-07 Ford 6.0 Powerstroke



## HEADERS

Looking for durable, horsepower-building exhaust components? Install these high-flow tubular Headers. In independent dyno tests, our Headers added 27 hp and 56 lbs-ft of torque on a stock tune, and 37 hp and 99 lbs-ft of torque on an engine with a performance tune. These headers are made from stainless steel with CNC flanges and precision TIG welds. Plus, Sinister Headers produce power in the low rpm power band making them perfect for towing.



POWERSTROKE



1995.5-03 Ford 7.3 Powerstroke – Engine Cover



1994-97 Ford 7.3 Powerstroke – Radiator Cover

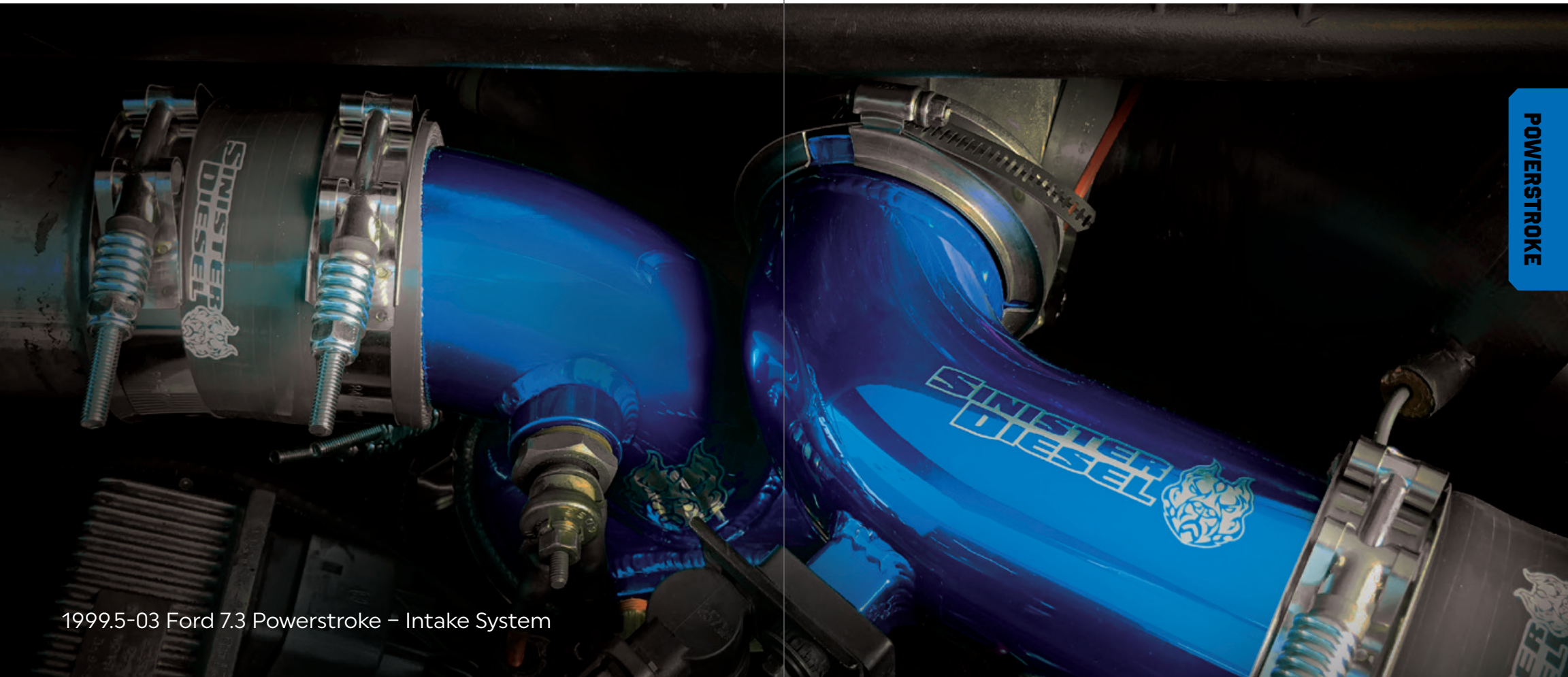


2008-2010 Ford 6.4 Powerstroke



## INTAKE ELBOWS

Sinister Diesel® Intake Elbows are designed and engineered to outperform the competition. Our elbows are made of mandrel bent aluminum with a CNC base-plate built to hold even the highest boost levels. Polished and powder coated Sinister Blue®, these elbows look as good as they perform.



1999.5-03 Ford 7.3 Powerstroke – Intake System

2003-07 Ford 6.0 Powerstroke



2005-16 Ford 6.4 & 6.0 Powerstroke F250-350 – 2" Leveling Kit for 4WD (Also available in black)

# LEVELING KITS

When you're ready to level the front end of your truck so you can add bigger tires and rims, our kits get the job done. You get all the hardware you need, and installation is easy because no modifications are required.



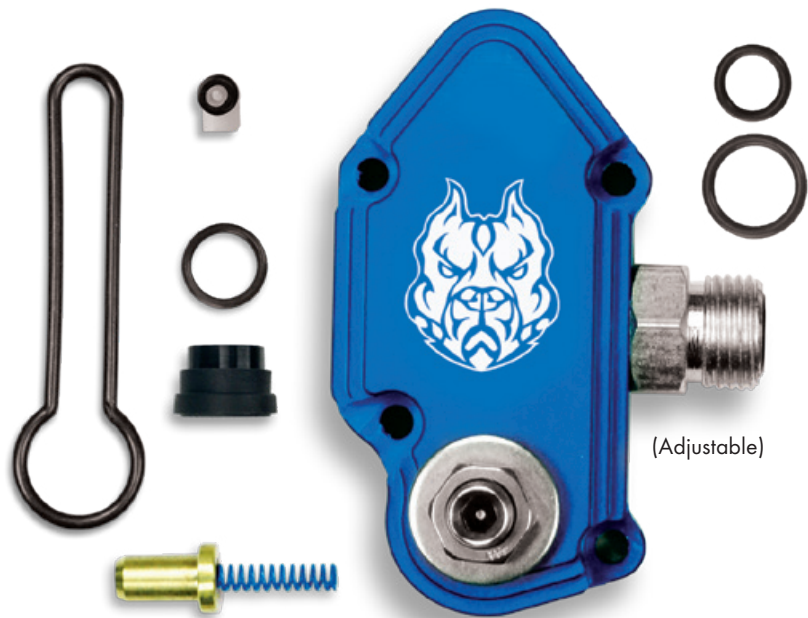
1999.5-04 Ford 6.0 & 7.3 Powerstroke F250-350/Excursion – 2" Leveling Kit For 4WD



2004-15 Ford Powerstroke Leveling Kit for 2WD (Also available in Black)

POWERSTROKE





(Adjustable)

2003-07 Ford 6.0 Powerstroke – Sinister® Blue Spring Kit

\*\*\* PAT. PENDING \*\*\*



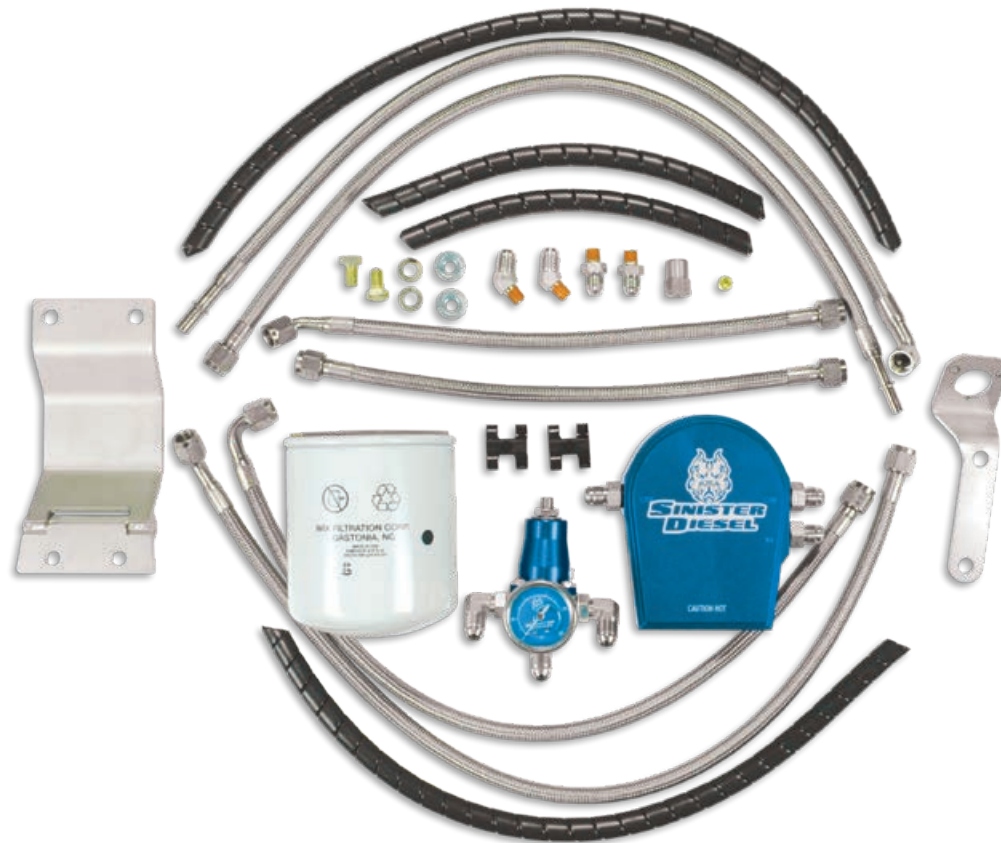
(Non-Adjustable)



CARB EO. NO. D-721-4



1999.5-03 Ford 7.3 Powerstroke - Regulated Fuel Return Kit  
(Also available for 2003-07 Ford 6.0 Powerstroke)

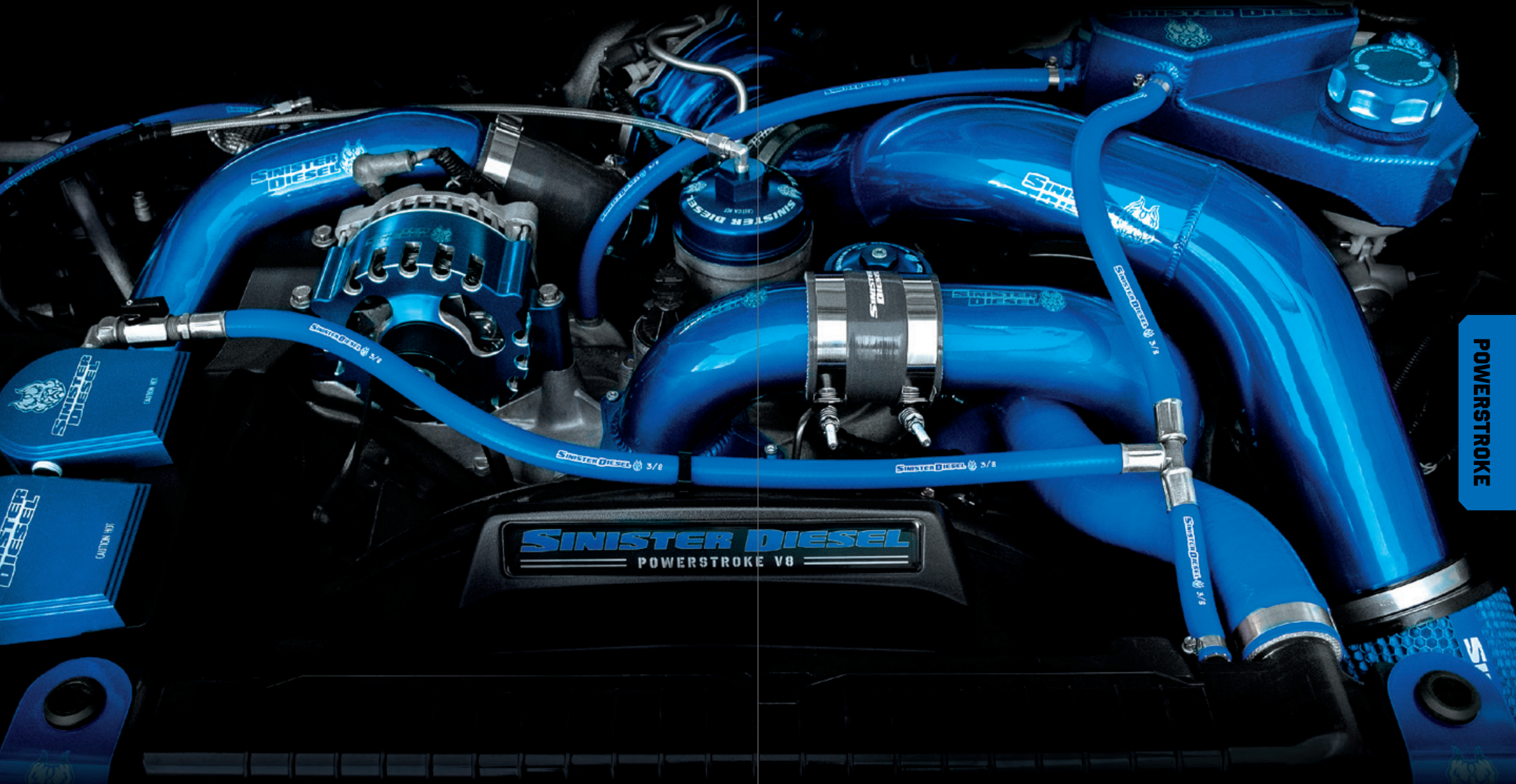


POWERSTROKE

# FUEL SYSTEMS

Sinister® offers a variety of fuel system kits and components to improve your truck's performance and longevity. For example, our CAT Fuel Filter Adaptor provides filtration down to 2 microns, installs in under an hour, and keeps your fuel system running clean. Our Regulated Fuel Return Kit features a fuel pressure regulator that allows you to monitor fuel pressure anytime, prevents "dead heading" of the injectors, lubricates the spool valve, provides for easier start-ups, reduces engine noise, improves overall performance and more.

2004 Ford 6.0L Powerstroke

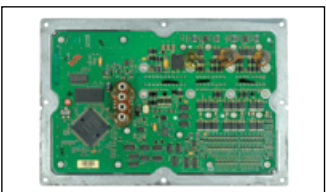
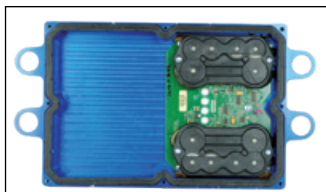


POWERSTROKE





2003-07 Ford 6.0 Powerstroke - 58V FICM  
(48V FICM also available)



1994-03 Ford 7.3 Powerstroke -  
Injector Drive Module

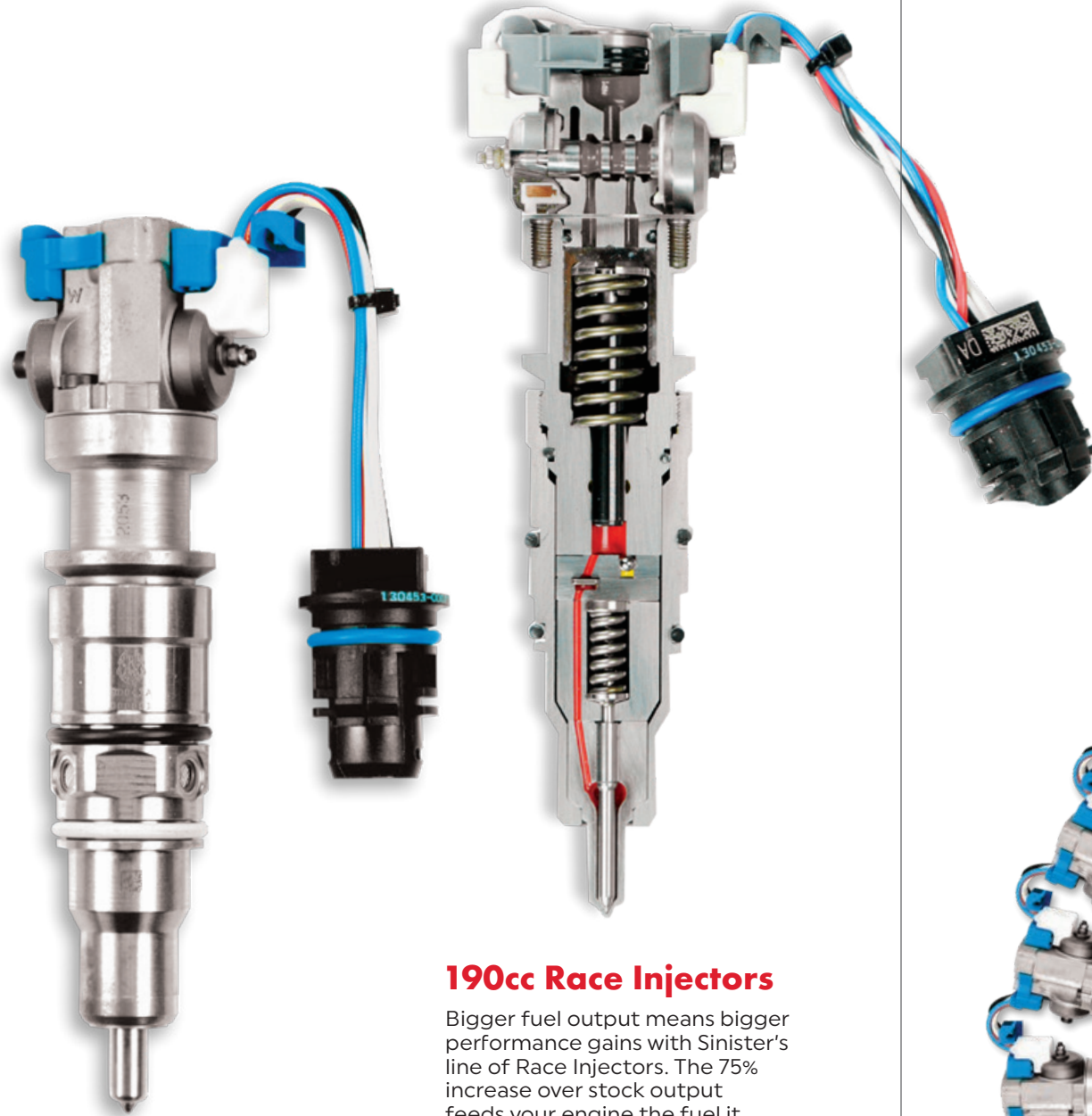


# INJECTOR MODULES

The Sinister Diesel® 58 Volt FICM (Fuel Injection Control Module) is designed to improve drivability by giving you better horsepower, fuel economy, and cold weather performance. It comes pre-programmed with the latest flash programming directly from Ford.



POWERSTROKE



2003-07 Ford 6.0 Powerstroke

### 190cc Race Injectors

Bigger fuel output means bigger performance gains with Sinister's line of Race Injectors. The 75% increase over stock output feeds your engine the fuel it needs at the moment you need it most. Plus, these injectors feature improved internal body modifications for reliability and durability race after race.



## INJECTORS

Sinister Diesel's high-performance Ford 6.0 injectors are built on remanufactured bodies to make them more cost-effective, but everything else is brand new from the nozzle to the connector to ensure optimal performance and reliability. All of the new parts give the injectors optimal response rate and cold-weather performance to keep your truck happy regardless of the weather conditions. Also a redesigned spool valve helps prevent stiction.





# EGR COOLERS



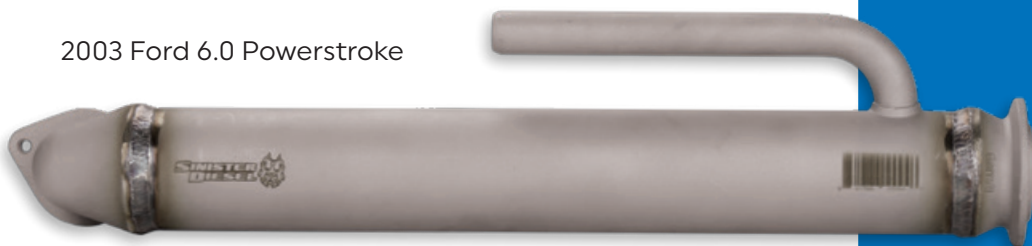
Our advanced technology EGR Coolers solve the problem of cracked, leaking, and overheating stock exhaust coolers. We've scrapped the factory internal mesh system in favor of our unique tube design which improves performance and reliability. Plus, all our EGR Coolers are assembled at Sinister's California location so you're sure to get a leak free, perfect fit every time. These upgraded, stainless steel TIG welded EGR Coolers are backed by a lifetime warranty.

2004-07 Ford 6.0 Powerstroke

ARB EO. NO. D-721



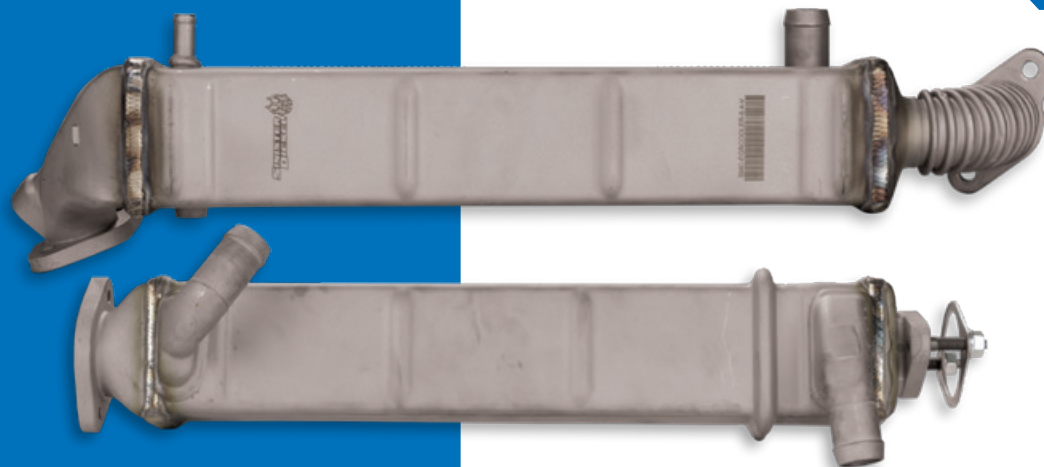
2003 Ford 6.0 Powerstroke



**POWERSTROKE**



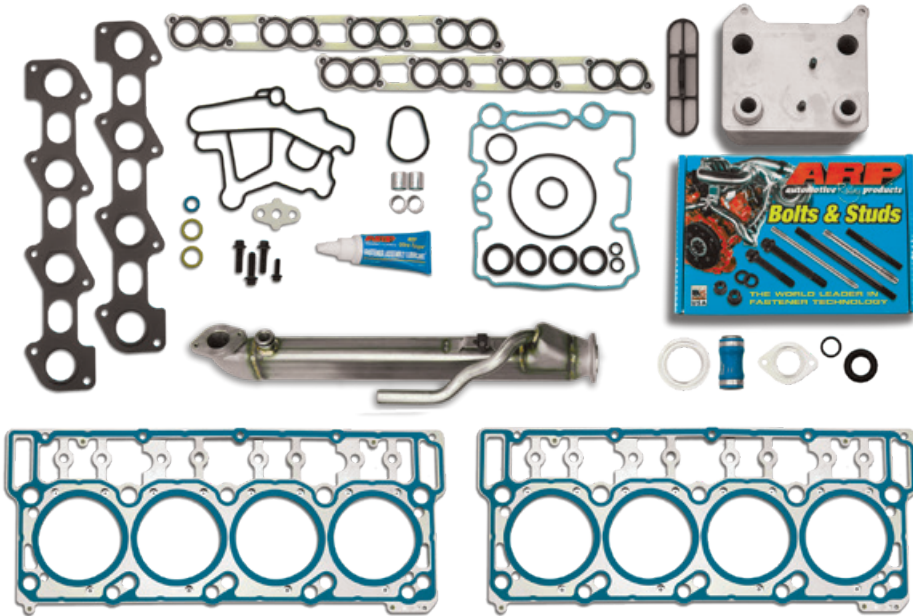
*Stock Factory EGR Cooler with mesh vs. Sinister EGR Cooler with proprietary tube design*



2008-10 Ford 6.4 Powerstroke

## SOLUTION KITS

Fixing all major truck problems is as easy as ordering one of our Solution Kits. We've eliminated the need for you to spend hours creating lengthy parts lists and shopping around for the best prices. These kits include everything you need to simplify your project. Best of all, they save you money.



2004-07 Ford 6.0L Powerstroke – Complete Solution Kit

## HEAD GASKETS

These head gaskets are made from five layers of stainless steel and feature a Fluoroelastomer (FKM) coating which keeps the engine block and cylinder head completely sealed to each other. In addition, these gaskets feature a durable "black diamond" coating which seals rough surface finishes. This design keeps cost down and performance up with improved durability, reduced chance of future head gasket problems and improved engine performance.

2003-07 Ford 6.0  
Powerstroke  
Black Diamond Head Gaskets

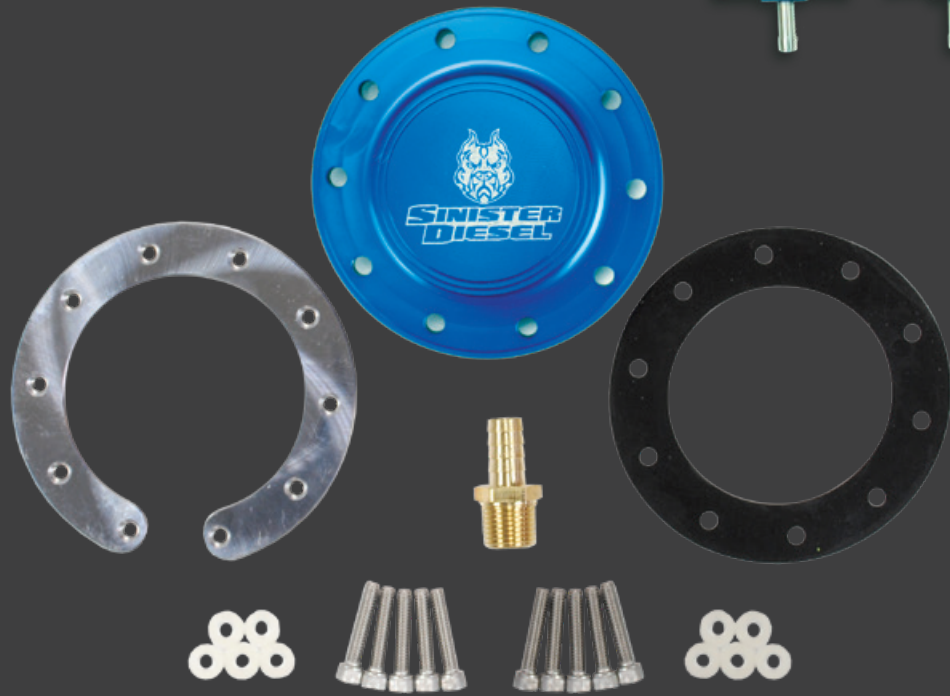
Also Available for:  
• 1994-02 and 08-16 Ford Powerstroke



POWERSTROKE



# UNIVERSAL APPLICATION



Universal Fuel Tank Sump Kit



Universal Coolant Filter Kit



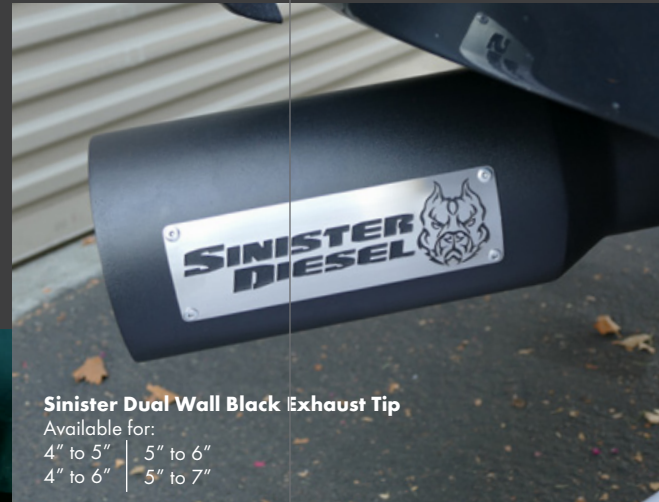
Heavy Duty Alternator Wiring Kit



UNIVERSAL

# EXHAUST TIPS

A custom exhaust tip gives your truck that finished look. Whether dual wall or standard; chrome, black, or Sinister's exclusive AR Exhaust Tip; this small upgrade makes a big difference to the appearance of your truck.



**Sinister Dual Wall Black Exhaust Tip**

Available for:  
4" to 5" | 5" to 6"  
4" to 6" | 5" to 7"



**Sinister Polished Exhaust Tip**

Available for:  
4" to 5"  
4" to 6"  
5" to 6"



**Sinister "AR-15 Exhaust" Tip - Patent Pending**

Available for:  
4" to 5"  
4" to 6"  
5" to 6"



**Sinister Black Exhaust Tip**

Available for:  
4" to 5"  
4" to 6"  
5" to 6"

UNIVERSAL



# SINISTER OEM

When you need OEM parts for your diesel truck, Sinister's got you covered. Whether it's Ford, Dodge, or Chevy/GMC, Sinister has a huge selection of factory replacement parts to fit your needs and your budget.



Intake/EGR Gasket Kit – 2003-2007 Ford Powerstroke 6.0L



Injector High Pressure Oil Rail Ball Tubes – 2003-2007 Ford Powerstroke 6.0L



Injector Seal Kit – 2003-2007 Ford Powerstroke 6.0L



Injector for 2001-2004 Duramax LB7



High Pressure Oil Pump (HPOP) for 2004.5-2007 Ford Powerstroke 6.0L



High Pressure Fuel Pump – 2001-2010 Duramax 6.6L



High Pressure Oil Pump (HPOP) – 2003-2004 Ford Powerstroke 6.0L



Injection Control Pressure Sensor (ICP) – 1994-03 Ford Powerstroke 7.3L



Injection Control Pressure Sensor (ICP) – 2004-2007 Ford Powerstroke 6.0L

Learn more about fuel systems on our website.