

SIMRAD®

SIMRAD®

MARINE ELECTRONICS FOR
POWERBOATS AND SPORTFISHING



SIMRAD SERVICE & SUPPORT

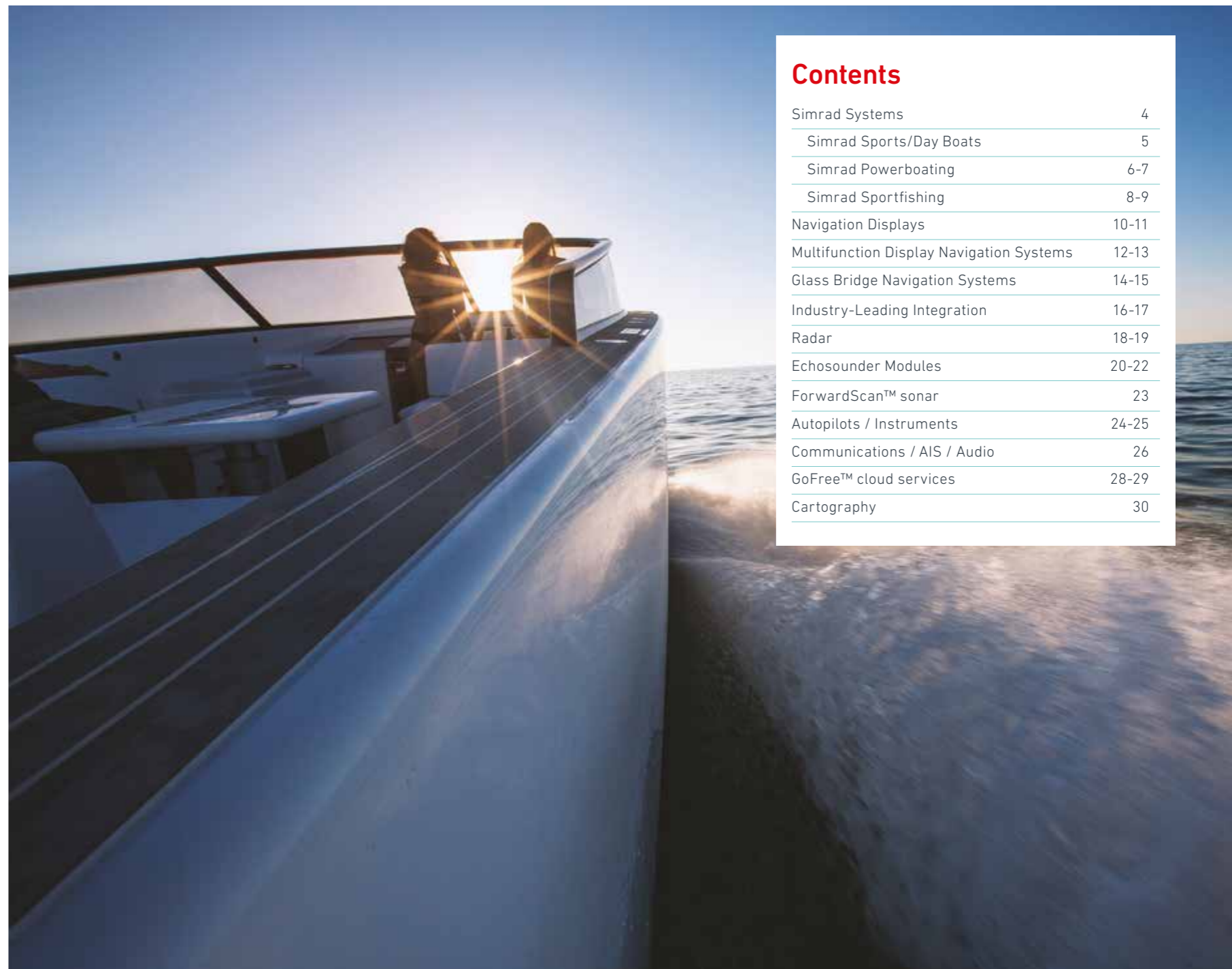
GO WITH CONFIDENCE

SIMRAD®



MARINE ELECTRONICS FOR POWERBOATS AND SPORTFISHING

Image © SE Media



Contents

Simrad Systems	4
Simrad Sports/Day Boats	5
Simrad Powerboating	6-7
Simrad Sportfishing	8-9
Navigation Displays	10-11
Multifunction Display Navigation Systems	12-13
Glass Bridge Navigation Systems	14-15
Industry-Leading Integration	16-17
Radar	18-19
Echosounder Modules	20-22
ForwardScan™ sonar	23
Autopilots / Instruments	24-25
Communications / AIS / Audio	26
GoFree™ cloud services	28-29
Cartography	30

For over sixty years the name SIMRAD has meant one thing: rock solid, high performance marine electronics. It's a reputation that was earned the hard way, on commercial fishing vessels in the challenging waters of the North Atlantic. Today we carry on this legacy, combining advanced technology with intuitive user-friendly designs. So whether your destination takes you around the harbour, or around the world, SIMRAD electronics will give you the confidence you need to make the most of your time on the water.



A SYSTEM FOR ANY BOAT

Simrad offers display and electronics solutions for recreational vessels of all sizes; from small sports/day boats, centre consoles, cuddy cabins and walkarounds up to luxury cruisers and superyachts. Flexible integration and expansion options make it easy to build a system that's right for your vessel.

SPORTS/DAY BOATS



Wherever you go, journey in safety and comfort with a Simrad GO XSE series display for navigation, sonar, entertainment and engine monitoring.

Page 5

SPORTS/DAY BOATS

Simrad GO XSE series chartplotter navigation displays are a perfect fit for runabouts of all types. These standalone displays offer comprehensive navigation capabilities, combined with a range of built-in sonar technologies to suit both powerboating and sportfishing enthusiasts. With Simrad connectivity, it's easy to integrate and accessorise to suit your needs.

Small Sports/Day boats or RIBS
Single station powerboats
Up to 26 feet



POWERBOATING



Cruise confidently with a Simrad NSS evo2 or NSO evo2 multifunction display system offering intuitive touchscreen control of radar, sonar, autopilot and more.

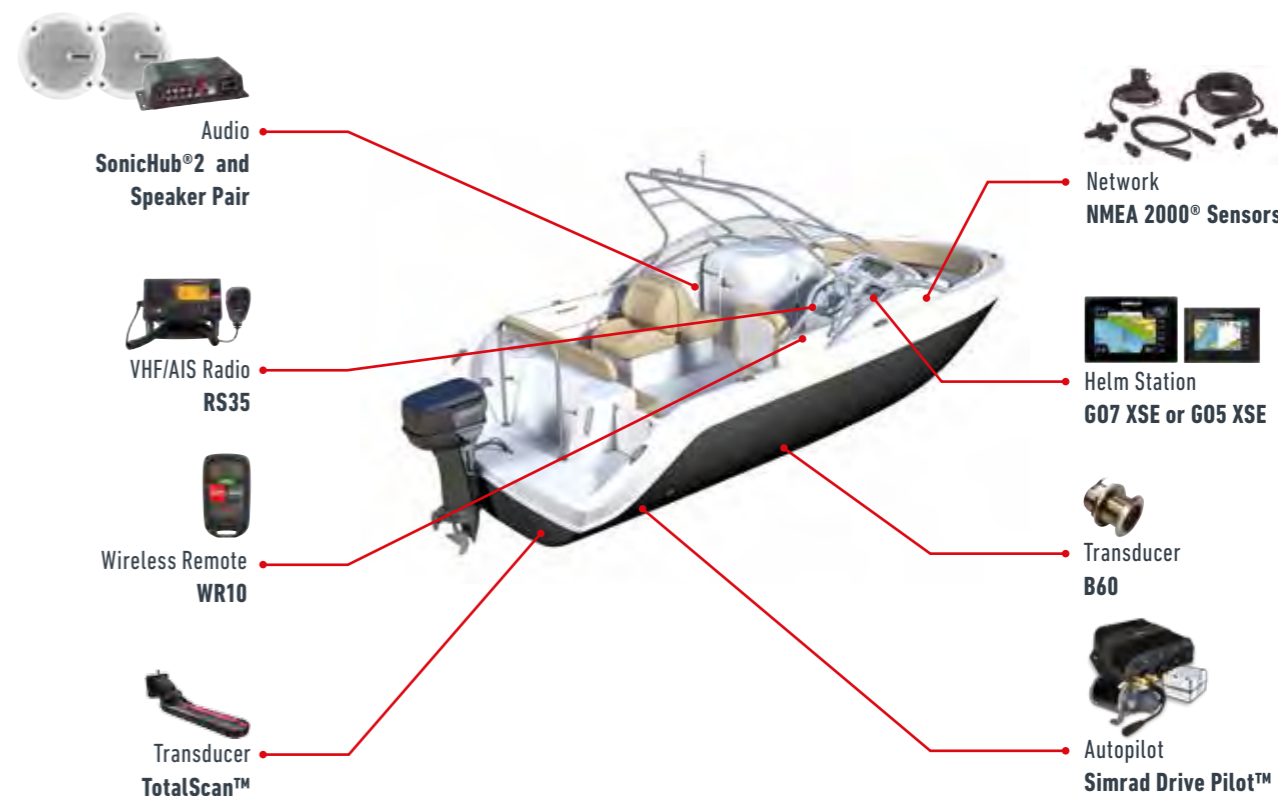
Page 6-7

SPORTFISHING



Take on any challenge with fish-finding sounder tech, 3D sonar imaging, and bird-finder radar at your fingertips – all with NSS or NSO evo2.

Page 8-9



POWERBOATING

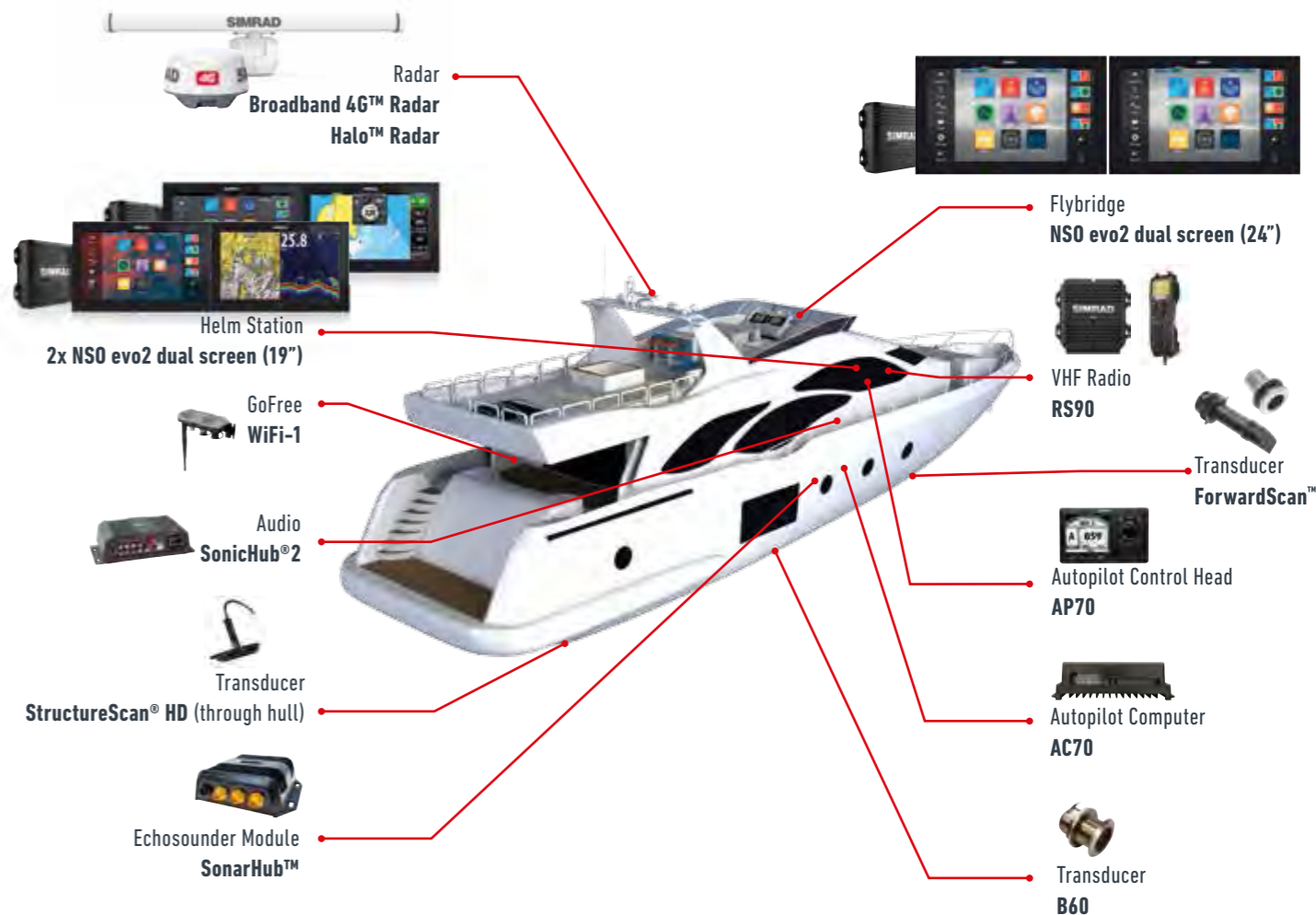
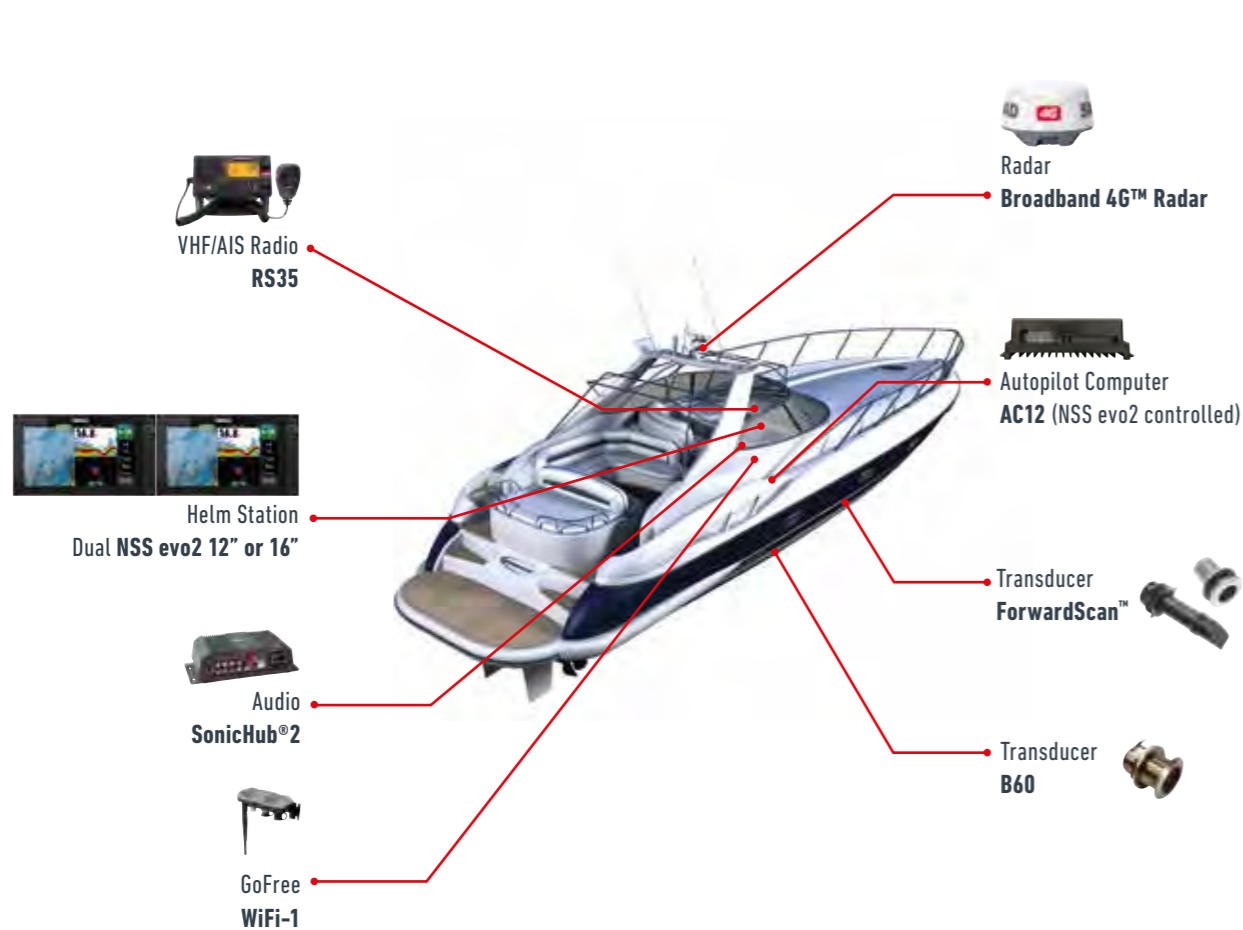
Simrad offers a dedicated solution for powerboats large and small. Navigate confidently and safely with intuitive multi-touch controls, automatic routing, and ForwardScan™ sonar. Command your autopilot, monitor distant weather and even control your onboard entertainment all from a Simrad Glass Bridge multifunction display system.



Small & medium powerboats
Single station powerboats
26 to 50 feet



Motoryachts
Large dual station motoryachts
50 - 100+ feet



SPORTFISHING

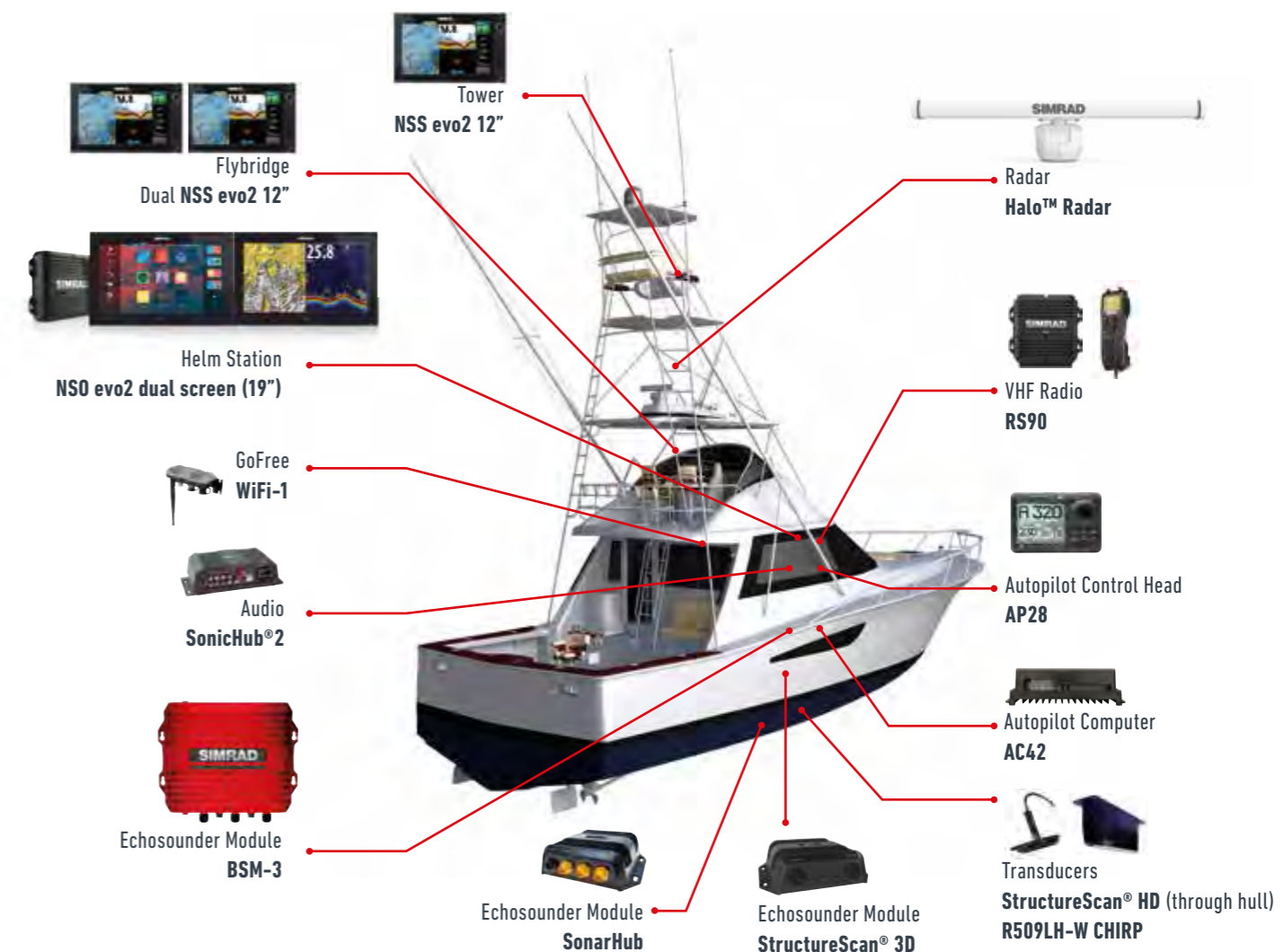
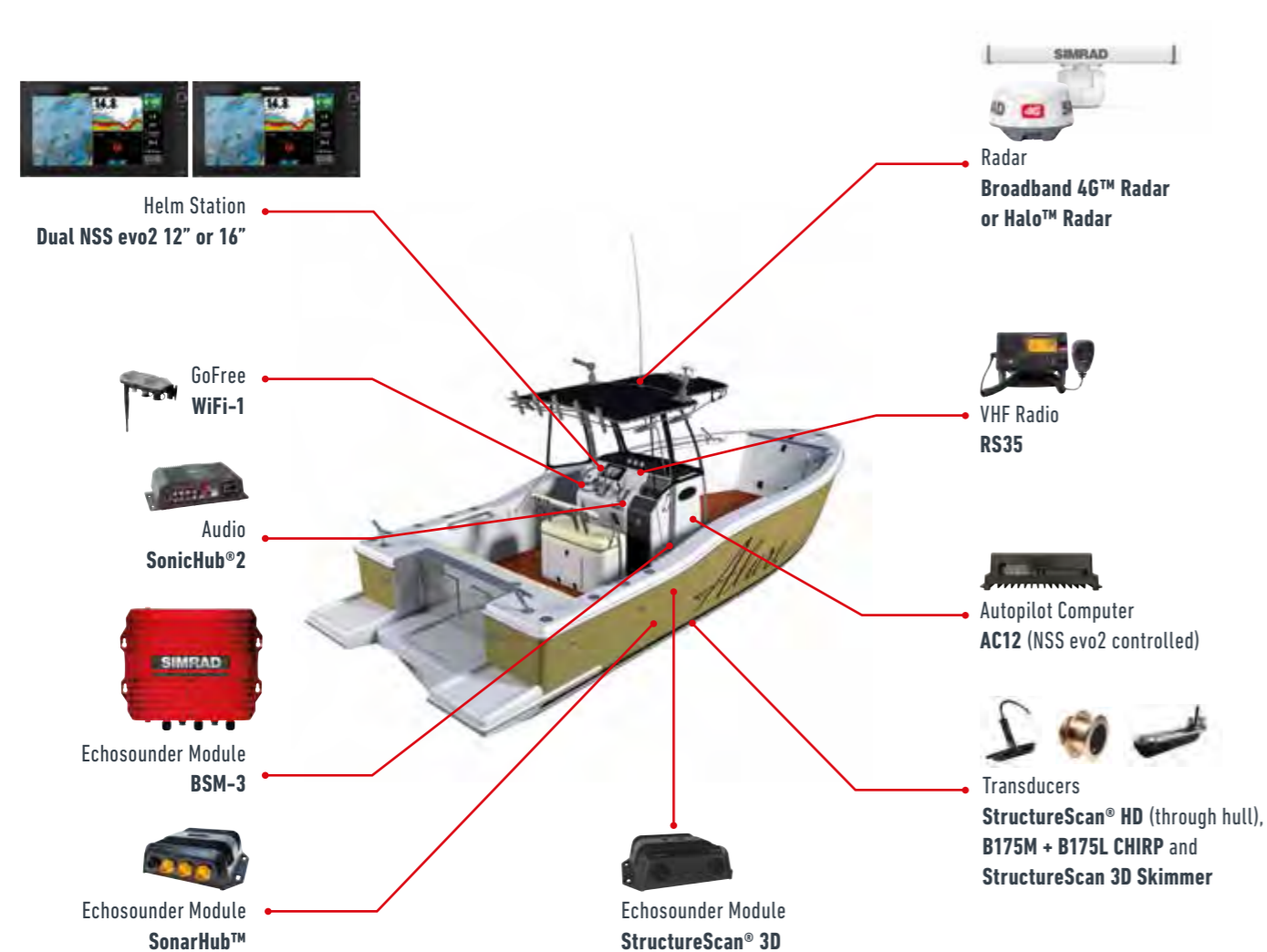
With state-of-the-art fishfinding technology Simrad has solutions for all centre console and sportfishing boats. Echosounders, StructureScan® HD and 3D sonar imaging, high-resolution radar, custom charting for anglers with the Insight Genesis™ service, and a range of rugged and reliable multifunction display systems are available to suit all vessels.



Centre Console
Single station sportfishers
20 - 40 feet



Large Flybridge
Dual station offshore sportfishers
40 - 70+ feet





NEW SIMRAD GO-SERIES

Get more from every day on the water with the Simrad G05 and G07 XSE, a perfect fit for compact sportboats and dayboats.



Behind its super-bright touchscreen lies a chartplotter with built-in GPS receiver, and Wi-Fi access to the latest charts and updates. Control your onboard sound system, monitor engine data and more over NMEA 2000®, as you cruise with confidence and find fish like a pro with an extensive range of built-in Simrad sonar technologies including ForwardScan™ sonar, StructureScan® HD imaging, Broadband Sounder™ module and CHIRP functionality.

FEATURES

- Easy to use multi-touch interface
- Full-featured chartplotter with widest available cartography support (Navionics, CMAP)
- 5-inch flush or bracket mount display (G05 XSE)
- 7-inch flush, flat or bracket mount display (G07 XSE)
- Widescreen with bright LED backlight
- High-speed 10 Hz GPS receiver
- Broadband Sounder™ module with CHIRP
- Built-in ForwardScan™ sonar*
- Built-in StructureScan® HD imaging*
- Built-in GoFree™ Wi-Fi
- NMEA 2000® compatible

*Additional transducer required



Pinch-to-zoom
with Multi-touch.



DESCRIPTION	PART NO.
G05 No Transducer	000-12451-001
G05 Med/High/Downscan	000-12452-001
G05 XSE TotalScan	000-12675-001
G07 No Cartography, XSE	000-12455-001
G07 No Cartography, XSE TotalScan	000-12673-001
G07 No Cartography, XSE, Med/High/Downscan	000-12674-001




NSS EVO2

With an easy to use tablet-style interface that's fresh but familiar, the NSS evo2 combines a multi-touch screen with push-to-select rotary dial for precision control and speedy response in any conditions, from calm to rolling seas.

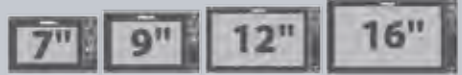
Built-in GPS, full autopilot integration, and smarter trip planning with TripIntel™ make NSS evo2 displays a perfect fit for the helm of any powerboat. Sportfishing enthusiasts will search less and catch more with onboard StructureScan® HD sonar imaging, CHIRP and Broadband Sounder™ technology, and integration with a wide range of other fishfinding technologies.

FEATURES

- Widescreen display with bright LED backlight
- Multi-touch interface with pinch-to-zoom
- Internal high-speed GPS antenna
- Built-in SonarHub with Broadband Sounder™ technology, CHIRP sonar and StructureScan® HD imaging
- Autopilot integration
- Widest choice of cartography options
- Works with Navionics® Autorouting™ & Jeppesen Easy Routing™
- Plan journeys based on fuel range, tide, and detailed trip history with TripIntel™
- Works with our full range of radar and echosounder solutions, StructureScan® 3D, ForwardScan™ sonar, SonicHub®2 entertainment, and more
- Wireless connectivity (requires WIFI-1 module)
- NMEA2000®, 0183® & Ethernet connectivity



Pinch-to-zoom with Multi-touch.




NSS evo2 displays include a built-in echosounder with CHIRP technology, plus support for StructureScan® HD and the NEW StructureScan® 3D sonar imaging or ForwardScan™ sonar – simply plug in your choice of sonar transducers.

DESCRIPTION	PART NO.
NSS7 evo2 Combo Multifunction Display	000-11185-001
NSS9 evo2 Combo Multifunction Display	000-11191-001
NSS12 evo2 Combo Multifunction Display	000-11193-001
NSS16 evo2 Combo Multifunction Display	000-11197-001



All models include embedded cartography.



NSO EVO2

Simrad NSO evo2 Glass Bridge systems are perfectly suited to blue water powerboats and sportfishing vessels.

These systems deliver high processing power for fast charting, sonar, radar and entertainment across dual independent widescreen displays, with Simrad HEROiC User Interface for intuitive multi-touch control, TriplIntel™ technology for smarter trip planning, and expansive integration capabilities.



Optional OP50 Controller
NSO evo2 Processor
M019 Monitors
Control two monitors independently with just a single NSO evo2 processor.



PROCESSOR FEATURES

- Dual independent HDMI monitor outputs
- Widescreen Full HD monitor support
- Multi-touch interface with pinch-to-zoom
- Easily manage multiple displays with Bridge Control
- Integrates with the full range of Simrad radar solutions, BSM-3 Broadband Sounder, SonarHub with StructureScan® 3D and StructureScan® HD imaging, ForwardScan® sonar, and much more
- OP50 keypad & rotary controller option
- Widest choice of cartography options
- Works with Navionics® Autorouting™ & Jeppesen Easy Routing™
- Plan journeys based on fuel range, tide, and detailed trip history with TriplIntel™
- Multiple video inputs
- Quad-core processor
- Wireless connectivity (requires WIFI-1 module)

MONITOR FEATURES

- Low 8mm flush-mount profile and all-glass design enhances the look of any helm
- HDMI, DVI & Composite inputs

MO-T HIGH-BRIGHT TOUCHSCREEN MODELS

- 1000-nit high-brightness, sunlight-viewable screen
- Multi-touch control

MO-P PILOTHOUSE MODELS

- 300-nit brightness for pilothouse operation
- OP50 control

Pinch-to-zoom with Multi-touch.

16"

19"

24"

DESCRIPTION	PART NO.
NSO evo2 Processor	000-10997-001
NSO evo2 Dual 16" Multi-Touch monitor bundle. With OP40 Controller and GS25 GPS Antenna. No charts included	000-11485-002
NSO evo2 Dual 19" Multi-Touch monitor bundle. With OP40 Controller and GS25 GPS Antenna. No charts included	000-11540-002
NSO evo2 24" Multi-Touch monitor bundle. With OP40 Controller and GS25 GPS Antenna. No charts included	000-11541-002
M016-T 15.6" wide touchscreen high bright monitor	000-11260-001
M016-P 15.6" wide pilothouse monitor	000-11261-001
M019-T 19" wide touchscreen high bright monitor	000-11262-001
M019-P 19" wide pilothouse monitor	000-11263-001
M024-T 24" wide touchscreen high bright monitor	000-11264-001
M024-P 24" wide pilothouse monitor	000-11265-001
GS25 GPS Antenna	000-11043-001
OP50 Remote, Portrait	000-12364-001
OP50 Remote, Landscape	000-12512-001

Industry-Leading Integration

Simrad multifunction displays are at the forefront of marine technology, constantly expanding and improving the tools available to help you make the most of every minute on the water.

With all new TriplIntel™ technology designed specially for power boaters, it's now quicker and easier than ever to plan your trips based on fuel range and tides. While underway, monitor fuel efficiency and tune your boat's performance in real-time with industry-standard NMEA 2000® engine and sensor connectivity.

Expand your display system to suit your needs, through a wide range of Simrad performance modules including fish-finding and depth-charting echosounders, StructureScan® 3D sonar imaging, Broadband 4G™ and Halo™ Pulse Compression radar, autopilot, AIS, audio entertainment, and so much more.

GPS

High Speed GPS

Incredible position accuracy, however fast or slow you go.

- 16-channel 10Hz GPS antenna
- Superior signal acquisition
- Compact design
- Easily flush mounted

WIFI

WIFI

View and control your MFD with your smartphone or tablet, from anywhere on board.

- Free viewer app
- Free controller app
- Open protocol enables custom app development



SonicHub®2

SonicHub®2

Bring your music on board with Bluetooth® streaming, AM/FM radio, and full Simrad multifunction display integration.

- Control your music from your Simrad display
- Bluetooth streaming from smartphones and tablets
- Play MP3 files from a USB drive



Echosounder Modules

Innovative sonar technologies designed for every requirement.

- SonarHub™ Sounder Module
- ForwardScan™ sonar
- StructureScan® 3D imaging
- BSM-3 Broadband Sounder with CHIRP



CZONE™

Turn your vessel into a smart boat with CZone™ digital switching and fully automate your onboard electronics.

- Full electrical panel on your MFD
- Control it all, from lighting to bilge pumps
- Monitor power consumption, battery and tank levels
- Define custom alarms



Autopilot

Award-winning, ocean-proven autopilot systems to suit any size and type of vessel.

- Dedicated control or Simrad display integration
- Predefined turn patterns
- Dodge function
- NoDrift steering

AIS

AIS

Reduce the risk of collision with this see and be seen technology.

- Class B AIS transponders
- Transmit your location
- Track and identify AIS-equipped vessels
- AIS navigational overlay



Broadband Radar™

Confidently navigate congested waterways and harbours with exceptional close-range performance.

- Innovative FMCW technology
- Range up to 36nm
- Eliminates "main bang" dead zone
- Efficient low-power technology
- Mount anywhere on board



Halo™ Radar

See both near and far with an unprecedented mix of close and long-range detection.

- Available with 3, 4 or 6-foot array
- See closer than 90 metres (300 feet)
- Range up to 72nm with 6-foot array
- Navigate safely, monitor weather cells, and find birds with ease
- InstantOn™ startup from standby, ready in 16-25 seconds from power-on

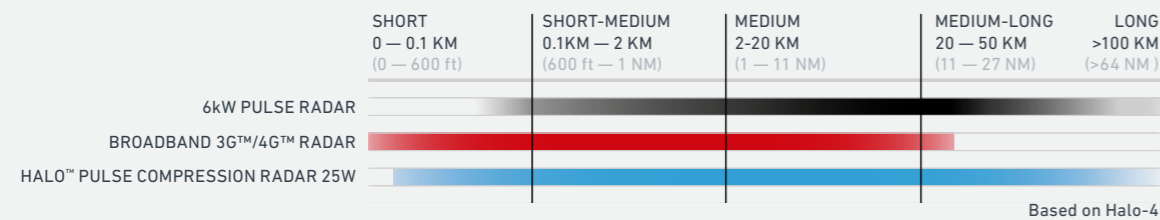
Radar

Halo™ Radar

Revolutionary new Simrad Halo™ radar makes it easier than ever to navigate safely, keep an eye on the weather, and find flocks of birds that mark the best waters to fish. Solid-state Pulse Compression technology lets you see both near and far at the same time, on a single screen, from a single Halo™ radar array.



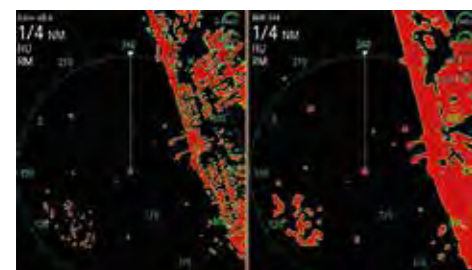
DESCRIPTION	PART NO.
Halo-3 Pulse Compression Radar	000-11469-001
Halo-4 Pulse Compression Radar	000-11470-001
Halo-6 Pulse Compression Radar	000-11471-001



HALO™ RADAR / MODELS

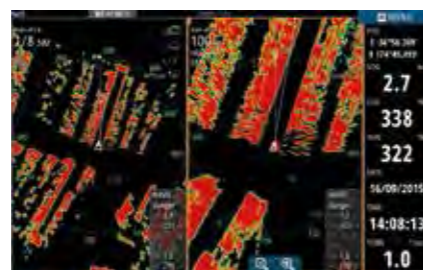
3-FOOT OPEN ARRAY	4-FOOT OPEN ARRAY	6-FOOT OPEN ARRAY
48NM TRUE RANGE	64NM TRUE RANGE	72NM TRUE RANGE

Beam Sharpening



Beam Sharpening technology delivers a more detailed picture, with improved separation of adjacent targets. Halo™ Radar (left) clearly resolves individual vessels and structures in a crowded anchorage compared to traditional 6kW pulse radar (right).

Dual Range Operation



See closer than 90 metres (300 feet) on one side of the screen, and as far as 64 nautical miles on the other. Halo™ Radar truly functions as two independent radar systems in one, with no performance compromises at either selected range.

Birdfinder Radar



For offshore sportfishing enthusiasts and commercial fishers, birds mean fish. Halo's dedicated BIRD mode makes it easy to locate feeding flocks from miles away, without introducing the distraction of high-gain screen clutter.

Radar



DESCRIPTION	PART NO.
Broadband 4G™ Radar	000-10421-001
Broadband 3G™ Radar	000-10420-001

Broadband Radar™

Enjoy a crystal clear image, right up to the bow of your boat, with our incredible Broadband Radar. Solid state technology does away with the traditional magnetron and instead offers lower emissions than a mobile phone, making these systems safe to mount anywhere, on any size boat. There are two Broadband Radar™ options, the outstanding Broadband 3G™ radar, which has a 28NM working range, and the revolutionary Broadband 4G™ radar, which has advanced features and up to a 36NM working range.

BROADBAND 3G™/4G™ RADAR FEATURES

- Crystal clear image
- Automatic clarity
- MARPA target tracking
- Dual guard zones
- InstantOn™ startup
- Low power consumption
- Extremely low emissions
- Quick installation

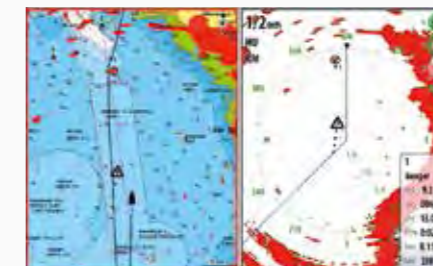
BROADBAND 4G™ RADAR ONLY FEATURES

- Up to 36NM working range
- Beam Sharpening
- High speed mode (48RPM)
- Dual Range
- Advanced target detection

BEST IN CLASS RADAR PERFORMANCE



Display up to 10 MARPA targets



Chart/Radar Overlay



Unrivalled target discrimination



DESCRIPTION	PART NO.
TXL-10S-4 10 kW 4 ft open array low emission radar kit	000-11477-001
TXL-10S-6 10 kW 6 ft open array low emission radar kit	000-11478-001
TXL-25S-7 LOW Emission 25kW 7ft Antenna	000-11476-001

HD Digital Radar

Our HD Digital radars combine high performance open array scanners with the latest in digital signal processing and a proven history of oceangoing reliability. Experience unparalleled situational awareness with exceptional range, high resolution, and compliance with tough IMO IEC62388 Annex D target detection specifications.

FEATURES

- Available in 4-foot/10kW, 6-foot/10kW, and 7-foot/25kW
- 64, 72, or 96nm instrumented range
- 1.8°, 1.2°, or 1.0° beam resolution
- Automatic Harbour and Offshore Modes
- Dual EBL/VRM
- Dual Guard Zones
- 10-target MARPA tracking

Echosounder Modules



NEW StructureScan® 3D

StructureScan 3D imaging scans underwater terrain and fish-holding structure to create a high-resolution, 180-degree, three-dimensional view beneath your vessel. With this unique imaging view, anglers gain a better understanding of where fish and structure are located in relation to their vessel. StructureScan 3D imaging is available on Simrad NSS evo2 and NSO evo2 displays, when used in combination with the StructureScan 3D module and 3D Skimmer® transducer.

FEATURES

- Unrivaled SideScan image clarity
- Vertical Enhancement Control
- High Definition (HD) and super-wide 3D scanning
- Waypoint Overlay
- Leading Edge™ Scanning Reference
- ScanTrack™ pan-tilt-rotate controls
- SelectScan™ target identification
- Enhanced SideScan Skimmer® transducer design

DESCRIPTION
StructureScan 3D Transducer and Module

PART NO.
000-12395-001



SonarHub sounder module

This all-in-one sounder solution combines StructureScan® HD imaging and CHIRP sonar. SonarHub is ideal for marking fish and tracking lure action and can provide easy-to-understand views of structure and bottom detail. Offering a powerful performance advantage in any situation, SonarHub's Frequency Sweeping Pulse Compression technology – known as CHIRP sonar – provides high-definition detail to depths of up to 1,000 metres (3,500 feet). SonarHub's StructureScan HD functionality gives boaters picture-like displays for more productive fishing, diving and search and recovery operations.

FEATURES

- Advanced Simrad Broadband Sounder™ technology offers high performance with low noise
- Plug-and-play compatibility with Simrad and Airmar transducers
- Simrad CHIRP technology works with traditional 50/83/200 kHz transducers
- Three Ethernet ports for connection to multiple Simrad displays
- Dual ports: Connect one single-frequency or CHIRP transducer, plus one StructureScan® HD or ForwardScan™ transducer

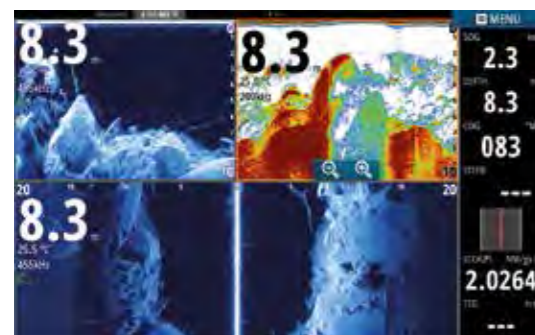
DESCRIPTION
SonarHub™ Module

PART NO.
000-11142-001



Echosounder Modules

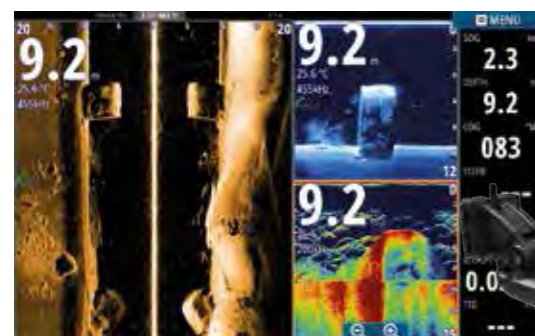
TotalScan™ transducer



An all-in-one transducer, TotalScan™ matches proven broadband and CHIRP sonar with StructureScan® HD and DownScan Imaging™ technology, making it possible to target fish and search for fish-holding structure with the same transducer.

FEATURES

- 83/200 kHz Broadband sonar
- Medium/High-frequency CHIRP sonar
- DownScan Overlay
- StructureScan® HD imaging
- Easily-installed Skimmer® transducer design
- Compatible with NSS evo2, NSO evo2 & Simrad G05/G07 XSE



DESCRIPTION
TotalScan Skimmer® transducer

PART NO.
000-12568-001

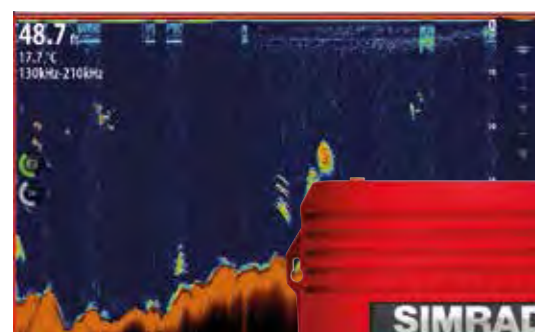
BSM-3 sounder module



Designed for professionals and serious sportfishing enthusiasts, the BSM-3 is a high performance, dual-channel broadband sounder with CHIRP technology. Its 3,000m / 10,000ft working range means you can venture further offshore, with the confidence to find the fish you're looking for.

FEATURES

- 3000m range (transducer dependent)
- Dual-channel CHIRP echosounder
- Range of transducer & frequency options
- Industry leading target separation and clarity
- Easy to use with auto/manual modes
- Rugged all-aluminium housing



DESCRIPTION
Broadband Sounder Module (BSM-3)

PART NO.
000-11742-001

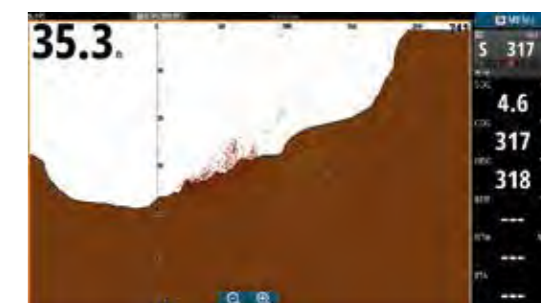


ForwardScan™ Sonar



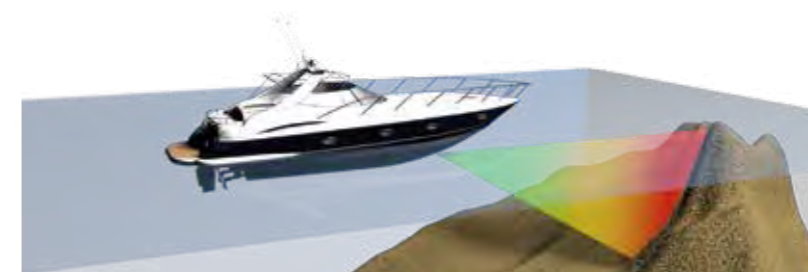
ForwardScan™ sonar

Know what lies ahead with Simrad ForwardScan. This forward-looking sonar provides a clear two-dimensional image of the bottom in front of your vessel, allowing you to navigate shallow or poorly-charted waters with confidence. With real-time updates and a forward-looking view of up to eight times your current depth, ForwardScan lets you relax and enjoy a safer day on the water.



FEATURES

- Clear view of what's below the surface
- Easy to see view of the bottom
- Set up custom warning zones
- Avoid running aground
- Shallow depth alarm
- Built-in temperature sensor
- Through-hull fitting with stainless sleeve
- Easy to install
- Simrad NSS evo2, NSO evo2 & G05/G07 XSE compatible



Maximum forward view of 8X your current depth

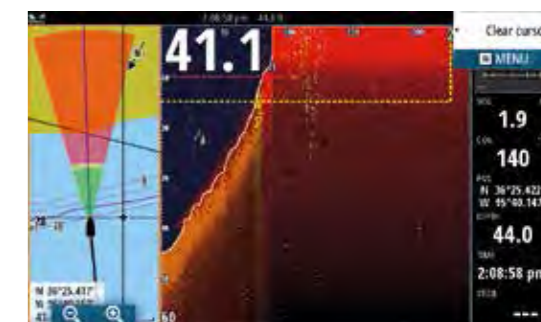
e.g. at 3m (10ft) depth, see up to 24m (80ft) ahead.

Nominal forward view of 4-5X your current depth

e.g. at 3m (10ft) depth, see 12-15m (40-50ft) ahead.

DESCRIPTION	PART NO.
Forwardscan Transducer (XDCR kit)	000-11674-001
Forwardscan Transducer (no sleeve or plug)	000-11675-001
Forwardscan Pre-fit Pack (sleeve & plug only)	000-11669-001
SonarHub (required for operation on NSO)	000-11142-001

Bottom Colour Tracking offers a solid 2D rendering of the bottom ahead of your vessel for an uncluttered, immediately understandable view.



Heading Line View integrates ForwardScan depth data with the heading line on the navigation page of your Simrad display, with simple colour-coding to represent deep, medium, and shallow water.

Autopilots / Instruments

Our autopilot systems offer proven performance and reliability for all types of sportfishing and power boats, from 5-30 metres / 18-100 feet. Design an autopilot system to best suit your vessel and requirements – operate your autopilot entirely from a Simrad MFD, or add an autopilot head unit for dedicated controls.



AP24 / AP28

The award-winning Simrad AP24 and AP28 offer a classic high-visibility display and button-driven interface, combining everything you need to control your Simrad autopilot in one compact control unit.

FEATURES

- Integrated display & controller
- Large, clear digits
- AP28 includes rotary dial for easy heading adjustment

DESCRIPTION	PART NO.
AP28 Control Unit	22096366
AP24 Control Unit	22096267
AP24 Virtual Rudder Feedback System: AP24, AC12 Computer, RC42 Rate Compass, RPU80 Pump	AP2403VRF

FEATURES

- Easy to use
- Full Simrad MFD integration
- Dedicated control units available
- Integrated turn patterns
- Dodge function
- NoDrift steering
- Constant depth tracking
- Virtual rudder feedback



Simrad MFD Integration

Take command of your Simrad autopilot with your NSS evo2, NSO evo2, or other compatible Simrad multifunction display. With full on-screen controls, there's no need for a separate autopilot control unit.

FEATURES

- On-screen autopilot controls
- Rotary-dial steering on Touch Sensible™ models
- Perfect for Glass Bridge setups

DrivePilot / Outboard Pilot

Do-It-Yourself autopilot packs for fingertip control from any Simrad GO XSE, NSS evo2 and NSO evo2 multifunction display. Affordable automatic steering for hydraulic-steer and cable steer engines. The DrivePilot provides robust performance in heavier seas with included rate compass.



DESCRIPTION	PART NO.
DrivePilot Hydraulic Steer Pack	000-11750-001



DESCRIPTION	PART NO.
Outboard Pilot Hydraulic Pack	000-11748-001
Outboard Pilot Cable steer Pack	000-11749-001



IS35 Gauge

Easily visible day or night, the IS35 offers an interface to engine data, fuel efficiency, depth history and more. Connected by NMEA 2000®, the IS35 automatically detects and displays the most relevant information on a series of pre-set, customisable data pages.

FEATURES

- Simple button-driven menus
- Automatically displays data from NMEA 2000 engines and sensors
- Monitor up to two engines per gauge
- Stylish-low-profile design
- Single-cable installation

DESCRIPTION	PART NO.
IS35 Colour Instrument Display	000-11756-001



IS40 Colour Displays

These full-colour digital instrument displays are incredibly easy to use, bright and highly visible, with a massive 170° viewing angle. Featuring multiple data pages to suit almost any application, the IS40 provides the information you want, when and where you want it. With engine data integration and autopilot capabilities, the IS40 is much more than a traditional instrument display.

FEATURES

- Large, full-colour display
- Straightforward menu system
- See speed, depth, wind, autopilot, engine data, and more
- Bonded LCD for zero condensation
- 170° viewing angle
- Bright screen with high contrast
- Micro-C connectivity
- Easy installation

DESCRIPTION	PART NO.
IS40 Digital display	000-10931-001
IS40 Speed, Depth pack	000-10955-001



IS40 & OP10

Combining an OP10 autopilot controller with an IS40 display creates an intuitive autopilot control system, where controller and display can be mounted separately to best suit your helm configuration.

FEATURES

- Full colour screen
- Intuitive keypad controller
- Flexible installation options

DESCRIPTION	PART NO.
IS40 Autopilot pack	000-11486-002
OP10 Pilot controller	000-10932-001



WR10

Take control of your autopilot from anywhere on board with this easy to use, pocket size, wireless remote controller. Perfect for all types of motor and fishing boats.

FEATURES

- 1 or 10 degree course changes
- Waterproof Bluetooth® base station
- Range of up to 30 metres

DESCRIPTION	PART NO.
WR10 Autopilot remote and base station	000-12316-001



OP50

Available in portrait and landscape versions to suit any mounting location from dash to helm chair arm, this controller provides intuitive keypad and rotary-dial command of up to six NSS evo2 or NSO evo2 displays.

FEATURES

- Control up to six NSS evo2 or NSO evo2 multifunction displays
- High-quality aluminium control dial with built-in cursor functions
- Available in portrait or landscape orientation

DESCRIPTION	PART NO.
OP50 Remote, Portrait	000-12364-001
OP50 Remote, Landscape	000-12512-001

Communications / AIS / Audio



RS90 VHF Radio System

Not just a radio, the RS90 also functions as an AIS receiver, hailer, foghorn, and onboard intercom. A 30 second record and replay means you never miss anything vital, and with up to 6 handsets you need never be out of reach.

FEATURES

- Modular system with built-in AIS receiver
- Supports up to 4 wired + 2 wireless handsets
- PA/Hailer and foghorn
- 30-second Record and Playback
- IPX7 waterproof

DESCRIPTION	PART NO.
RS90 BB AIS VHF RX system	000-11225-001
RS90 Handset & speaker kit	000-11226-001
RS90 Handset	000-11228-001
HS35 Wireless Handset	000-10791-001



NAIS-400

Reduce your risk of collision with this fully integrated Class-B AIS transponder – essential for navigating busy shipping lanes and congested ports. The NAIS-400 networks easily with any NSS or NSO display and Simrad RS VHF system.

FEATURES

- Class-B Approved AIS Transponder
- Integrates with existing Simrad MFD & VHF
- NMEA2000®, 0183® connectivity
- IPX7 waterproof
- Low power consumption

DESCRIPTION	PART NO.
NAIS-400 W/ GPS	000-10980-001
NSPL-400 VHF ANTENNA SPLITTER	000-10982-001



RS35

This versatile and rugged fixed-mount VHF radio is easy to use, with extra-large high resolution display and smooth rotary controller. With DSC and AIS built-in, the RS35 includes everything you need to communicate.

FEATURES

- Class-D DSC Approved
- Built-in AIS receiver
- Loud and clear audio
- Dual/Tri watch function
- NMEA2000® & 0183® connectivity

DESCRIPTION	PART NO.
RS35 AIS VHF	000-10790-001
RS12 VHF	000-10787-001



SonicHub®2

The SonicHub2 system features Bluetooth® connectivity to stream music from smartphones and tablets, built-in AM/FM radio, music and video playback from USB drives. All controlled from your Simrad display.

FEATURES

- 50W x 4 amplifier
- Dual USB ports
- Video output via Composite RCA for playing video files from a USB drive
- Pre-amp Zone 3 and subwoofer outputs
- Dual Stereo AUX input (AUX1, AUX2)

DESCRIPTION	PART NO.
SonicHub2 Module	000-12302-001
Simrad Marine Speakers	000-12305-001



HS35

The HS35 wireless handset works with your RS90 or RS35 radio to provide complete VHF, AIS and DSC functionality anywhere on board your boat, while also serving as an intercom between handsets and base station.

FEATURES

- Intercom function
- 100m range
- 8 hour battery life
- Inductive charging
- IPX7 waterproof

DESCRIPTION	PART NO.
HS35 Wireless Handset	000-10791-001



RC42N

The RC42N is an intelligent rate compass which significantly improves the dynamic performance of autopilots and stabilised radar displays. Featuring an integrated turn sensor, the RC42N enhances all auto-steering experiences.

FEATURES

- Magnetic fluxgate sensor
- Solid state rate sensor
- Fully waterproof
- NMEA2000® connectivity

DESCRIPTION	PART NO.
RC42N Rate Compass	000-10613-001



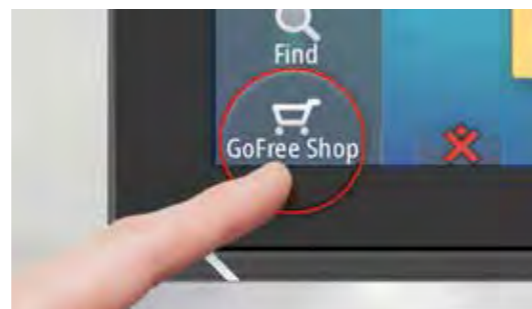
GOFREE™

GoFree™ cloud services power the digital marine ecosystem with offerings like the GoFree Shop, GoFree Hooked and GoFree Controller apps. With GoFree™ wireless technology boaters can download maps, update software, and use Insight Genesis directly from their Simrad® GO Series, NSS evo2 and NSO evo2 displays.



GoFree™ Shop

The GoFree Shop is a one-stop shop for marine-mapping needs that gives boaters the capability to download purchases or Insight Genesis custom maps to a personal computer or directly to Simrad® GO Series, NSS evo2 and NSO evo2 units, for immediate use.



GoFree™ Hooked App

GoFree Hooked™ is a free fishing app for freshwater and saltwater anglers that allows you to challenge friends, family or anglers from the global GoFree Hooked user community to participate in a real-time competition, and follow the results via a live in-app leaderboard. GoFree Hooked is compatible with Android and iOS smartphones.



GoFree™ Controller App

The GoFree Controller app allows you to view or control* Simrad® GO Series, NSS evo2 and NSO evo2 displays from a smartphone or tablet. The controller app is compatible with Android and iOS devices.



Insight Genesis™

Fish More Search Less



The free Insight Genesis service uses sonar logs recorded on your fishfinder/chartplotter to automatically create amazingly detailed maps with one-foot depth contours, showing key fish-holding areas not visible on off-the-shelf charts.

You can also take advantage of the Insight Genesis™ Social Map layer functionality, by downloading free custom maps submitted by other members of the Insight Genesis™ community.

Benefits of Insight Genesis™




- Transform the sonar data you upload to create free custom maps
- View, download & contribute to online Social Map water bodies across the globe
- Customise maps with 1, 3, 5 or 10 foot blue-shaded contours
- Unlimited map creation, upload, viewing & storage of all your trip history
- Merge multiple sonar logs into a single map
- Compatible with all Simrad® GO Series, NSS evo2 and NSO evo2 multifunction displays and navigation systems

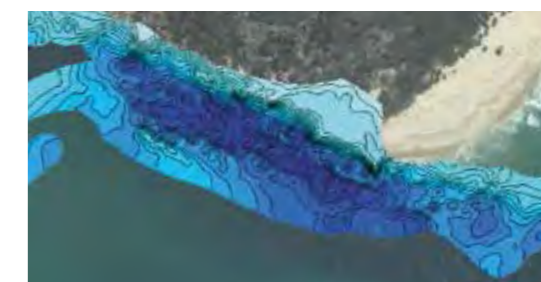
Premium Insight Genesis™ Subscription Features:

- View and download Vegetation and Bottom Hardness map overlays
- Highlight depth ranges with custom colours on Simrad® GO Series, NSS evo2 and NSO evo2 units
- Option to merge maps with Social Map or keep them private
- Includes free Insight Planner™ software



A Simple Three-Step Process

- 1. Record** sonar logs on your fishfinder/chartplotter 
- 2. Upload** your logs to Insight Genesis 
- 3. Use** your new maps on the web or your chartplotter 



Insight Planner™

PC Software



The ultimate PC navigational planning software to seamlessly plan and transfer routes, waypoints and POI.

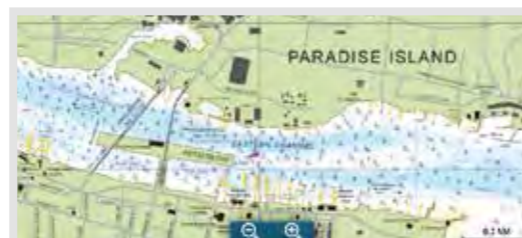


DESCRIPTION	PART NO.
Insight Planner Scratch Card	000-11092-001
Insight Planner DVD	000-11093-001

Cartography

C-Map

C-MAP MAX-N+ 2015 is packed with features that enhance any boating lifestyle, including dynamic raster Charts, high-resolution bathymetric charts, sportfishing data, tides and currents and custom depth shading that allows boaters to select the colours used for different depths. MAX-N+ charts are compatible with Simrad® GO Series, NSS evo2 and NSO evo2 displays.



MAX-N WIDE AND LOCAL provides C-MAP features such as harbour and approach chart detail, detailed marina charts and coverage of inland rivers and lakes.



Navionics

Simrad® GO Series, NSS evo2 and NSO evo2 displays are all compatible with Navionics, provider of worldwide electronic marine cartography, for another dimension in charting selections.

