

Universal Fit / Direct Fit / Custom Projects

Seatbelt Solutions



"Your Affordable Solution To Safety"

"The Leader in Direct Fit!"



(With Domestic and Foreign Parts)



**Corvette
Camaro
Chevelle
GM A-Body
GM G-Body
Chevy Trucks
El Camino
Nova**

**Mustang
Ford Truck
Bronco
Mopar
Jeep Wrangler
Jeep Cherokee**

**Universal:
Lap Belts
Retractable Lap
3 Point Retractable
3 Point Non-Retractable
Van Conversion
Custom Belts**

History

It all began in the summer of 2005 when Jeff Biegun gave his neighbor \$2,000 and a riding lawn mower in exchange for a 1975 Corvette, but there was one problem, the car had no seatbelts. This was a time when new Corvette seatbelt parts were scarce and most Corvette owners spent time sifting through used parts at swap meets. As Jeff began searching for the much needed seatbelts to complete his 1975 Corvette, he soon found that the parts he needed were either unavailable, of poor quality or overpriced. Luckily for the Corvette industry, Jeff was not willing to pay more to refurbish the belts he found at a swap meet, which would almost cost more than he paid for the car. Instead he set out on a mission to produce aftermarket "Direct Fit" seatbelts at a reasonable cost for all Corvette owners. After six months of research and development Jeff was ready to launch his new product - 1974-1977 dual retractable Direct Fit seatbelt set. He drove two hours to show the new belt to one of the biggest aftermarket Corvette distributors. They took one look at the high quality, and knowing these aftermarket seatbelts were in great demand, asked when could he deliver the first order. Since then Seatbelt Solutions has created a complete line of aftermarket seatbelts for many makes and models. We have grown considerably since 2005, now servicing over 600 vendors with the same personal attention that Jeff gave to the first client. What started as the search for a solution to Jeff's 1975 Corvette has grown into a successful business committed to finding solutions to help many car enthusiasts across the country with their seatbelt needs.

About Us

We do not sell retail. We leave that to our business partners. We are a manufacturer and do not believe in competing with our vendors. Here at Seatbelt Solutions we build your seatbelts with an emphasis on customer service and safety. This is just part of what makes Seatbelt Solutions the leader in the aftermarket seatbelt industry. You won't find a company more dedicated to our partners' success, bar none!

Testing and Engineering

When it comes to testing, Seatbelt Solutions has followed the lead of the Original Equipment Manufacturers (OEMs). We have well-established relationships with all of them, and we are the exclusive nationwide distributor for one of them, which means we had to meet their high standards to be selected. We have toured their facilities and worked with their engineering teams. The OEMs know and understand seatbelt safety better than anyone. We have replicated the OEMs test procedures and equipment at our own facility. Our test facility has a "G" Force Machine, Tilt Lock Testing Machine, Webbing Abrasion Tester, Salt Spray tester, (2) Tensile Machines (44482.216252548, kn, 10,000 lb. And 22241.10814123, kn, 5,000 lb.) And a retractor Cycling Tester. Seatbelt Solutions is very fortunate to be located in Palm Beach County where a large number of companies have down sized or moved their operations, leaving behind some of the best engineers. They come from companies like Pratt & Whitney, Motorola, United Technologies and Sikorsky to mention a few. Seatbelt Solutions tests to the most current FMVSS 209/302 certification. We have also started 208 testing (sled or crash testing like you see in commercials) on our most popular products. A lot of other seatbelt companies talk about safety, but here at Seatbelt Solutions we are fully committed to testing and guaranteeing product safety every day. Seatbelt Solutions is the only aftermarket seatbelt manufacturer that will provide current test results on the products you purchase from us. You won't find a company and staff more dedicated to making safe seatbelts than Seatbelt Solutions.

Table of Contents

Corvette C1 / C2	Page 3	Chevy Truck/EI Camino	Page 16	Testing Facility	Page 29
Corvette 1968-69	Page 4	G-Body/Conversion Vans	Page 17	New Items	Page 30
Corvette 1970-71	Page 5	Integrated Belts/HW Kit	Page 18	New Items	Page 31
Corvette 1972-73	Page 6	Ford Mustang 1964-1993	Page 19		
Corvette 1974-75	Page 7	Mopar 1967-1970	Page 20		
Corvette 1974-82	Page 8	Mopar and Bronco	Page 21		
Corvette 1984-96	Page 9	Jeep 1976-2006	Page 22		
Corvette Pads / Parts	Page 10	Jeep Buckles/Universal	Page 23		
Camaro 1967-1969	Page 11	Universal Belts	Page 24		
Camaro 1967-1973	Page 12	Universal Belts	Page 25		
Camaro 1974-2002	Page 13	Universal Belts	Page 26		
GM A-Body 1964-1967	Page 14	Component Colors	Page 27		
GM A-Body 1969-1975	Page 15	Webbing Colors	Page 28		

Corvette

1956-1996

Seatbelt Solutions offers Original Equipment "Direct Fit" seatbelts with the original color and three or four panel webbing. All Seatbelts can be custom made with any of the 58 colors and panel webbing choices that we offer. All 1969-1982 Premium OE Styled belts come with three panel webbing, GM buckles and sleeves. The economy belts come with metal Starburst buckles and seven panel webbing. We also stock a large selection of the original seatbelt vinyl parts.

OE Styled
Satin Lift Latch

1956-1962



- Hambone Designed OE Lap Belts
- OE Style Satin Lift Latch
- 4 Panel OE Webbing
- OE Stitch Pattern
- Hardware Sold Separate (Bottom of this Page)

CO5662-xxxx

1963



- 1963 OE Styled Lap Belts
- OE Style Satin Lift Latch
- 3 Panel OE 1963 Webbing
- OE Stitch Pattern

CO1963-xxxx

Premium Series



Premium 1964

- 1964-66E Lap Belts
- OE Irving Chute Bowtie Buckle
- 3 Panel Webbing
- OE Styled Mounting Anchors
- Fits Factory Console Storage Mount
- Hardware Sold Separately

CO1964-xxxx



Irving Chute Buckle Backside



Premium 1965-66E

- 1964-66E Retractable Lap Belts
- OE Irving Chute Bowtie Lift Latch Buckle
- 3 Panel Webbing
- OE Styled Mounting Anchors
- Fits Factory Console Storage Mount

CO6566E-xxxx

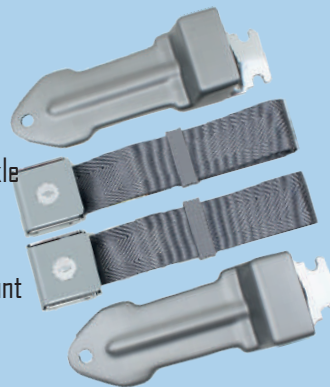
Economy Series



1964 Economy

- 1964-66E Lap Belts
- Aftermarket Bowtie Lift Latch Buckle
- 3 Panel Webbing
- Non OE Mounting Anchors
- Requires Aftermarket Console Mount
- Hardware Sold Separately

COE1964-xxxx



Economy 1965-66E

- 1964-66E Retractable Lap Belts
- Aftermarket Bowtie Lift Latch Buckle
- 3 Panel Webbing
- Non OE Mounting Anchors
- Requires Aftermarket Console Mount

COE6566E-xxxx

1966L-1967



- OE Styled Retractable Lap Belts
- Original GM Buckle
- OE 3 Panel Webbing
- Hardware Sold Separately

CO66L67-xxxx



Replacement Parts & Hardware



Hambone
Mounting Hardware
(does one seat)
Part # 5662HB



Hardware mounting
bolts(does one seat)
Part #5662HBB



1965-66 Boot



64-66
Winders



1966-67
Retractor
Cover

Corvette

1956-1996

Seatbelt Solutions offers Original Equipment "Direct Fit" seatbelts with the original color and three or four panel webbing. All Seatbelts can be custom made with any of the 58 colors and panel webbing choices that we offer. All 1969-1982 Premium OE Styled belts come with three panel webbing, GM buckles and sleeves. The economy belts come with metal Starburst buckles and seven panel webbing. We also stock a large selection of the original seatbelt vinyl parts.

1968



- 1968 Retractable Lap Belts
- OE 3 Panel Webbing
- OE Retractor Covers (Black only)
- Aftermarket GM Buckle
- No Hardware

CO1968-xxxx



1968 Replacement Retractor Boot
1968RC-xxxx

1968Late- Early1969

Our 1969 Corvette Seatbelts use the 1970-1971 Post on the tongue design with a Collar clip on the shoulder belt. Our individual parts are only compatible with Seatbelt Solution products. These are not compatible with Original equipment seatbelts.

Economy Series

ALL BUCKLES AND RETRACTORS ARE NON-WIRED



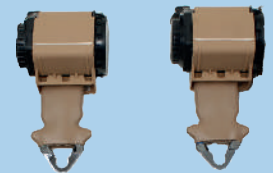
- 1969 Lap and Shoulder Set
- Vertical Mount Retractors
- Non OE Buckles
- Non OE Tongue
- 7 Panel Non OE Webbing
- Includes Mounting Bolts
- NO Buckle Sleeves

COE69V-xxxx



- 1969 Lap Belts Only
- Non OE Buckles
- Non OE Tongue
- 7 Panel Non OE Webbing
- No Mounting Hardware
- NO Buckle Sleeves

COE68L71L-xxxx



- Vertical Mount Retractors
- Non OE Latch
- 7 Panel Non OE Webbing
- No Mounting Hardware

COE69VS-xxxx

Standard Series



- 1969 Lap and Shoulder Set
- Vertical Mount Retractors
- Non OE Buckles
- OE Tongue and Cover
- 3 Panel OE Webbing
- Includes Mounting Bolts
- NO Buckle Sleeves

COS69V-xxxx



- 1969 Lap Belts Only
- Non OE Buckles
- OE Tongue and Cover
- 3 Panel OE Webbing
- No Mounting Hardware
- NO Buckle Sleeves

COS68L71L-xxxx



- Vertical Mount Retractors
- Non OE Latch
- 3 Panel OE Webbing
- No Mounting Hardware

COS69VS-xxxx

Premium Series



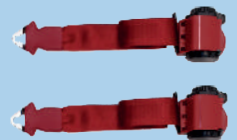
- 1969 Lap and Shoulder Set
- Vertical Mount Retractors
- Late '69 GM OE Buckles
- OE Tongue and Cover
- 3 Panel OE Webbing
- Includes Mounting Bolts
- Color Matched Buckle Sleeves

COP69V-xxxx



- 1969 Lap Belts Only
- Late '69 OE Buckles
- OE Tongue and Cover
- 3 Panel OE Webbing
- No Mounting Hardware
- Color Matched Buckle Sleeves

COP68L71L-xxxx



- Vertical Mount Retractors
- Non OE Latch
- 3 Panel OE Webbing
- No Mounting Hardware

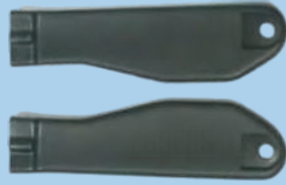
COP69VS-xxxx

Corvette

1956-1996

Seatbelt Solutions offers Original Equipment "Direct Fit" seatbelts with the original color and three or four panel webbing. All Seatbelts can be custom made with any of the 58 colors and panel webbing choices that we offer. All 1969-1982 Premium OE Styled belts come with three panel webbing, GM buckles and sleeves. The economy belts come with metal Starburst buckles and seven panel webbing. We also stock a large selection of the original seatbelt vinyl parts.

Replacement Parts



Early 1969 **#EG9EBS**



1969-1971 **#69L7BS**



Web Stops **#WS-xxxx**

1970-1971

1970-1971 Corvettes were equipped with 12" Buckle sides, however we have run across many cars that have the 1972 7.5" buckles. It is recommended that you ask your customer to verify which buckle length they have before ordering.

Economy Series

ALL BUCKLES AND RETRACTORS ARE NON-WIRED



- Lap and Shoulder Set
 - Horizontal Mount Retractors
 - Non OE Buckles
 - Non OE Tongue
 - 7 Panel Non OE Webbing
 - Includes Mounting Bolts
 - NO Buckle Sleeves
- #COE7071H-xxxx**



- Lap Belts Only
 - Non OE Buckles
 - Non OE Tongue
 - 7 Panel Non OE Webbing
 - No Mounting Hardware
 - NO Buckle Sleeves
- #COE68L71-xxxx**



- Horizontal Mount Retractors
 - Non OE Latch
 - 7 Panel Non OE Webbing
 - No Mounting Hardware
- #COE7071H-xxxx**

Standard Series



- Lap and Shoulder Set
 - Horizontal Mount Retractors
 - Non OE Buckles
 - OE Tongue and Cover
 - 3 Panel OE Webbing
 - Includes Mounting Bolts
 - NO Buckle Sleeves
- #COS7071H-xxxx**



- Lap Belts Only
 - Non OE Buckles
 - OE Tongue and Cover
 - 3 Panel OE Webbing
 - No Mounting Hardware
 - NO Buckle Sleeves
- #COS68L71-xxxx**



- Horizontal Mount Retractors
 - Non OE Latch
 - 3 Panel OE Webbing
 - No Mounting Hardware
- #COS7071H-xxxx**

Premium Series



- Lap and Shoulder Set
 - Horizontal Mount Retractors
 - GM OE Buckles
 - OE Tongue and Cover
 - 3 Panel OE Webbing
 - Includes Mounting Bolts
 - Color Matched Buckle Sleeves
- #COP7071H-xxxx**



- Lap Belts Only
 - GM OE Buckles
 - OE Tongue and Cover
 - 3 Panel OE Webbing
 - No Mounting Hardware
 - Color Matched Buckle Sleeves
- #COP68L71-xxxx**



- Horizontal Mount Retractors
 - Non OE Latch
 - 3 Panel OE Webbing
 - No Mounting Hardware
- #COP7071H-xxxx**

Corvette

1956-1996

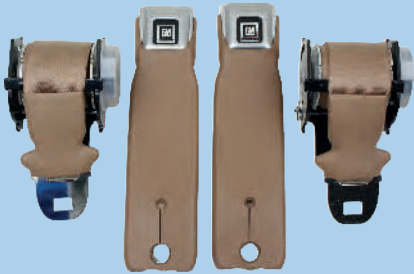
Seatbelt Solutions offers Original Equipment "Direct Fit" seatbelts with the original color and three or four panel webbing. All Seatbelts can be custom made with any of the 58 colors and panel webbing choices that we offer. All 1969-1982 Premium OE Styled belts come with three panel webbing, GM buckles and sleeves. The economy belts come with metal starburst buckles and seven panel webbing. We also stock a large selection of the original seatbelt vinyl parts.

1972-1973

In 1972 and 1973 Corvettes were equipped with 7.5" Buckle ends and had a retractable lap belt along with a retractable shoulder belt that was installed through the seat.

1972-1977 Retractable Lap Belts

ALL BUCKLES AND RETRACTORS ARE NON-WIRED



- Retractable Lap Belts Only
- GM Metal Buckles
- Non OE Tongue
- 7 Panel Non OE Webbing
- Includes Mounting Hardware
- Color Matched Buckle Sleeves
- No Shoulder Belt Provision

#7277-xxxx



Replacement Parts



Web Stops (ea)
#WS-xxxx



Buckle Sleeves (Buckle Not Included)
#7273BS-xxxx #7482BS-xxxx

Economy Series



- Lap and Shoulder Set
- Horizontal Mount Retractors
- Non OE Buckles
- Non OE Tongue
- 7 Panel Non OE Webbing
- Includes Mounting Bolts
- NO Buckle Sleeves

#COE7273D-xxxx



- Lap Belts Only
- Non OE Buckles
- 7 Panel NON OE Webbing
- Mounting Hardware Included
- NO Buckle Sleeves

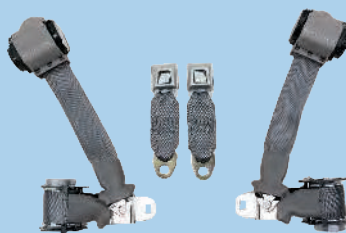
#COE7273L-xxxx



- Horizontal Mount Retractors
- Non OE Latch
- 7 Panel Non OE Webbing
- No Mounting Hardware

#COE7273SH-xxxx

Standard Series



- Lap and Shoulder Set
- Horizontal Mount Retractors
- Non OE Buckles
- 3 Panel OE Webbing
- Includes Mounting Bolts
- NO Buckle Sleeves

#COS7273D-xxxx



- Lap Belts Only
- Non OE Buckles
- 3 Panel OE Webbing
- Mounting Hardware Included
- NO Buckle Sleeves

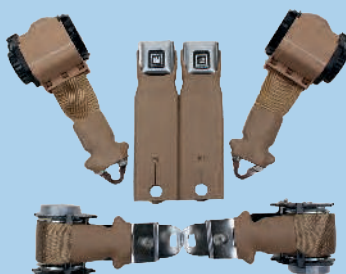
#COS7273L-xxxx



- Horizontal Mount Retractors
- Non OE Latch
- 3 Panel OE Webbing
- No Mounting Hardware

#COE7273SH-xxxx

Premium Series



- Lap and Shoulder Set
- Horizontal Mount Retractors
- GM Buckles
- 3 Panel OE Webbing
- Includes Mounting Bolts
- Color Matched Buckle Sleeves

#COP7273D-xxxx



- Lap Belts Only
- GM Buckles
- 3 Panel OE Webbing
- Mounting Hardware Included
- Color Matched Buckle Sleeves

#COP7273L-xxxx



- Horizontal Mount Retractors
- Non OE Latch
- 3 Panel OE Webbing
- No Mounting Hardware

#COP7273SH-xxxx

Corvette

1956-1996

Seatbelt Solutions offers Original Equipment "Direct Fit" seatbelts with the original color and three or four panel webbing. All Seatbelts can be custom made with any of the 58 colors and panel webbing choices that we offer. All 1969-1982 Premium OE Styled belts come with three panel webbing, GM buckles and sleeves. The economy belts come with metal starburst buckles and seven panel webbing. We also stock a large selection of the original seatbelt vinyl parts.

1974-1975 Convertible Only

In 1974 and 1975 Corvettes Convertibles use the same seatbelts as the 1972-73 with the only difference being the buckle side length was increased to 8.5".

ALL BUCKLES AND RETRACTORS ARE NON-WIRED

Replacement Parts



Web Stops (ea)
#WS-xxxx



Buckle Sleeves (Buckle Not Included)
#7273BS-xxxx **#7482BS-xxxx**

Economy Series



- Lap and Shoulder Set
- Horizontal Mount Retractors
- Non OE Buckles
- Non OE Tongue
- 7 Panel Non OE Webbing
- Includes Mounting Bolts
- NO Buckle Sleeves
#COE7475D-xxxx

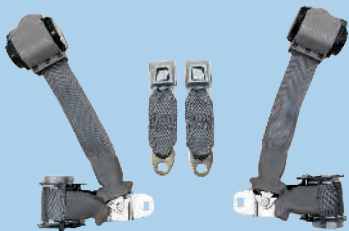


- Lap Belts Only
- Non OE Buckles
- 7 Panel NON OE Webbing
- Mounting Hardware Included
- NO Buckle Sleeves
#COE7475L-xxxx



- Horizontal Mount Retractors
- Non OE Latch
- 7 Panel Non OE Webbing
- No Mounting Hardware
#COE7475SH-xxxx

Standard Series



- Lap and Shoulder Set
- Horizontal Mount Retractors
- Non OE Buckles
- 3 Panel OE Webbing
- Includes Mounting Bolts
- NO Buckle Sleeves
#COS7475D-xxxx



- Lap Belts Only
- Non OE Buckles
- 3 Panel OE Webbing
- Mounting Hardware Included
- NO Buckle Sleeves
#COS7475L-xxxx



- Horizontal Mount Retractors
- Non OE Latch
- 3 Panel OE Webbing
- No Mounting Hardware
#COS7475SH-xxxx

Premium Series



- Lap and Shoulder Set
- Horizontal Mount Retractors
- GM Buckles
- 3 Panel OE Webbing
- Includes Mounting Bolts
- Color Matched Buckle Sleeves
#COP7475D-xxxx



- Lap Belts Only
- GM Buckles
- 3 Panel OE Webbing
- Mounting Hardware Included
- Color Matched Buckle Sleeves
#COP7475L-xxxx



- Horizontal Mount Retractors
- Non OE Latch
- 3 Panel OE Webbing
- No Mounting Hardware
#COP7475SH-xxxx

Corvette

1956-1996

Seatbelt Solutions offers Original Equipment "Direct Fit" seatbelts with the original color and three or four panel webbing. All Seatbelts can be custom made with any of the 58 colors and panel webbing choices that we offer. All 1969-1982 Premium OE Styled belts come with three panel webbing, GM buckles and sleeves. The economy belts come with metal starburst buckles and seven panel webbing. We also stock a large selection of the original seatbelt vinyl parts.

1974-1977 Coupe

ALL BUCKLES AND RETRACTORS ARE NON-WIRED

1974-77 Single Retractor



- Single Retractor Lap & Shoulder
- Non OE Buckles
- 7 Panel NON OE Webbing
- Mounting Hardware Included
- NO Buckle Sleeves
- **ECONOMY SERIES ONLY**

#CDE7477S-xxxx

Economy Series



- Lap and Shoulder Set
- Horizontal Mount Retractors
- Non OE Buckles
- 7 Panel Non OE Webbing
- Includes Mounting Bolts
- NO Buckle Sleeves

#CDE7477D-xxxx

Standard Series



- Lap and Shoulder Set
- Horizontal Mount Retractors
- Non OE Buckles
- 3 Panel OE Webbing
- Includes Mounting Bolts
- NO Buckle Sleeves

#COS7477D-xxxx

Premium Series



- Lap and Shoulder Set
- Horizontal Mount Retractors
- GM Buckles
- 3 Panel OE Webbing
- Includes Mounting Bolts
- Color Matched Buckle Sleeves

#COP7477D-xxxx

1978-1982

Economy Series



- Lap and Shoulder Set
- Non OE Buckle & Tongue
- 7 Panel Non OE Webbing
- NO Hardware
- NO Buckle Sleeves

#CDE7882-xxxx

Standard Series



- Lap and Shoulder Set
- Non OE Buckle
- OE Tongue
- 3 Panel OE Webbing
- NO Hardware
- NO Buckle Sleeves

#COS7882-xxxx

Premium Series



- Lap and Shoulder Set
- GM OE Buckle & Tongue
- 3 Panel OE Webbing
- NO Hardware
- Color Matched Buckle Sleeves

#COP7882-xxxx

Corvette

1956-1996

Seatbelt Solutions offers Original Equipment "Direct Fit" seatbelts with the original color and three or four panel webbing. All Seatbelts can be custom made with any of the 58 colors and panel webbing choices that we offer. All 1969-1982 Premium OE Styled belts come with three panel webbing, GM buckles and sleeves. The economy belts come with metal starburst buckles and seven panel webbing. We also stock a large selection of the original seatbelt vinyl parts.

1984-1996 Coupe and Convertible

1984-1996 CORVETTE C4 INTERIOR CARPET AND WEBBING COLORS TO MATCH

1984-1996 Corvettes were originally equipped with a dual retractor system with a cinch option. This option is the most common failure therefore we have designed a Single retractor system which eliminates the factory weak point. we offer two different designs, one for the Coupe vehicles and the second is for the Convertible Cars.



- Coupe Only
- Single Retractor Lap & Shoulder
- GM OE Buckles
- 7 Panel NON OE Webbing
- No Hardware
- Color Matched Carpet Filler
- Buckle Sleeves
(not include available Separately)

#C08496-xxxx

- Convertible Only
- Single Retractor Lap & Shoulder
- GM OE Buckles
- 7 Panel NON OE Webbing
- No Hardware
- Color Matched Carpet Filler
- Buckle Sleeves
(not include available Separately)

#C084962C-xxxx

BLACK WB1000

1993-96 TORCH RED WB 2006

1986-92 FLAME RED WB 2007

1984-85 CARMINE WB 2007

1984-87 SADDLE WB 3000

1984-85 BLUE WB 4001

1992-96 GREY WB 6005

MEDIUM GREY WB 6005

1990 BLUE WB 4002

1984-85 GRAPHITE WB 6009

1984-87 SILVER GREY WB 6005

1984-87 BRONZE WB 3005

1988-91 MEDIUM COGNAC WB 5P MED COG

1992-96 MEDIUM BEIGE WB 3008

1985-86 METALLIC BLUE WB 4005

#8496BS-xxxx

- 1984-1996 Corvette Buckle Sleeve
- Available in Black
- Color Matching Available (Limited colors)

1963-1974

3 Point Conversion Kits



GM Buckle
#COR6367-xxxxGM

1963-1967

- Lap and Shoulder Set
- Non OE Buckle & Tongue
- 7 Panel Non OE Webbing
- Includes Hardware
- Includes Buckle Sleeves



Chrome Lift Latch
#COR6367-xxxxCLL

1968-1974

- Lap and Shoulder Set
- Non OE Buckle & Tongue
- 7 Panel Non OE Webbing
- Includes Hardware
- Includes Buckle Sleeves



Starburst Metal Push Button
#COR6874-xxxxMPB



Plastic Push Button
#COR6874-xxxxPPB



Skin Pack Hardware Kit

Corvette

1956-1996

Seatbelt Solutions offers Original Equipment "Direct Fit" seatbelts with the original color and three or four panel webbing. All Seatbelts can be custom made with any of the 58 colors and panel webbing choices that we offer. All 1969-1982 Premium OE Styled belts come with three panel webbing, GM buckles and sleeves. The economy belts come with metal starburst buckles and seven panel webbing. We also stock a large selection of the original seatbelt vinyl parts.

Universal Lap Belt Pairs

GM Metal Push Button



#1205-xxxxP

Chrome Lift Latch



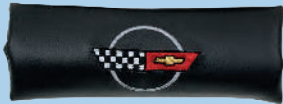
#1800-xxxxP

Starburst Metal Push Button



#1203-xxxxP

Seatbelt Pads



C4 #SBPC4



C5 #SBPC5



C6 #SBPC6



Z06 #SBPZ06

Seatbelt Extensions



- Universal
- 12" Long
- Flat Anchor on one end
- 30 degree anchor on one end

#SBEXT-xxxx



- 1972-96
- 12" Long
- Starburst Buckle

#SBE7296-xxxx



- 1997-2004
- 12" Long
- End Release Buckle

#SBE9704-xxxx



- 2005-2010
- 12" Long
- End Release Buckle

#SBE0510-xxxx

Replacement Buckle Sleeves and Retractor Covers



- 1964-66
- Retractor Winder Cover
- Sold each
- Color Matching Available (common colors)

#6366RC-xxxx



- 1966L-67
- Retractor Cover
- Sold Each
- Black (Colors Available)

#6667RC-xxxx



- 1968
- Retractor Cover
- Black Only

#1968RC-xxxx



- Late 1969-71
- 12" Overall Length
- Designed for GM Metal Buckle
- Left and Right Specific
- Sold Individually

#69L7IBS-xxxx



- Early 1969
- 12" Overall Length
- Designed for GM Plastic Buckle
- Left and Right Specific
- Sold Individually

#69EBS-xxxx



- 1972-73 Buckle Sleeve
- 7.5"
- Add 4 digit color to Part#
- Sold Each
- #7273BS-xxxx
- 1974-82 Buckle Sleeve
- 8.5"
- Add 4 digit color to Part#
- Sold Each
- #7482BS-xxxx



- 1984-96
- Buckle Sleeve
- Black (Colors Available)
- Sold Each
- Add 4 digit color to Part#
- #8496BS-xxxx

- 1972-73 GM Buckle End (no wire)
- 7.5"
- NO Sleeve
- Sold Each
- Black Only
- #7273BGM-xxxx



- 1974-82 GM Buckle End (no wire)
- 8.5"
- NO Sleeve
- Sold Each
- Black Only
- #7477BGM-xxxx



- 1974-82 GM Buckle End (WIRED)
- 8.5"
- #7482WBGM-xxxx
- NO Sleeve
- Sold Each
- Black Only
- No Plug End - Requires Wiring



Camaro

1967-2002

Seatbelt Solutions offers Original Equipment "Direct Fit" seatbelts with seven panel webbing. All Seatbelts can be custom made with any of the 58 colors and panel webbing choices that we offer. All 1974-1981 belts come with metal Starburst buckles and can be upgraded to GM logo buckles for an additional cost.

1967-1969

Our 1967-1969 Camaro Series are OE styled Direct fit replacement seatbelts. Our GM buckle is an aftermarket design and is NOT the same as original.



- Front Retractable Lap Belt
- OE Left/Right Retractor Boots
- Economy OE Style GM Buckles
- 7 Panel Webbing

CAM6769xxxxE



- Front & Rear Lap Belt Kit
- OE Left/Right Retractor Boots
- Economy OE Style GM Buckle
- 7 Panel Webbing

CAM6769FRxxxxE



- Front & Rear Lap Belt Kit & Shoulder Belts
- OE Left/Right Retractor Boots
- Economy OE Style GM Buckle
- 7 Panel Webbing
- Original Shoulder Belt Mounting Anchors & Cover

CAM6769KITxxxxE



- OE Style Shoulder Belts
- Non-Retractable
- Economy OE Style GM Buckle
- Original Shoulder Belt Mounting Anchors & Cover
- 7 Panel Webbing

CAM6769SHxxxxE

Standard Series



- Front Retractable Lap Belt
- Standard Irving OE GM Buckles
- OE Left/Right Retractors Boots
- 3 Panel OE Webbing

CAM6769-xxxxS



- Front and Rear Lap Belt Kit
- Standard Irving OE GM Buckles
- OE Left/Right Retractor Boots
- 3 Panel OE Webbing

CAM6769FR-xxxxS



- Front and Rear Lap Belt Kit & Shoulder Belts
- Standard Irving OE GM Buckles
- OE Left/Right Retractor Boots
- Original Shoulder Belt Mounting Anchors and Cover
- 3 Panel OE Webbing

CAM6769KIT-xxxxS



- OE Non-Retractable Shoulder Belts
- Standard Irving OE GM Buckles
- Original Shoulder Belt Mounting Anchors and Covers
- 3 Panel OE Webbing

CAM6769SH-xxxxS

Premium Series



- Front Retractable Lap Belt
- Deluxe OE Large GM/Carriage Buckles
- OE Left/Right Retractor Boots
- 3 or 4 Panel OE Webbing

CAM6769-xxxxP



- Front and Rear Lap Belt Kit
- Deluxe OE Large GM/Carriage Buckles
- OE Left/Right Retractor Boots
- 3 or 4 Panel OE Webbing

CAM6769FR-xxxxP



- Front and Rear Lap Belt Kit & Shoulder Belts
- Deluxe OE Large GM/Carriage Buckles
- OE Left/Right Retractor Boots
- Original Shoulder Belt Mounting Anchors and Cover
- 3 or 4 Panel OE Webbing

CAM6769KIT-xxxxP



- OE Style Shoulder Belts
- Non-Retractable
- Deluxe OE Large GM/Carriage Buckles
- Original Shoulder Belt Mounting Anchors and Covers
- 3 or 4 Panel OE Webbing

CAM6769SH-xxxxP

Camaro

1967-2002

Seatbelt Solutions offers Original Equipment "Direct Fit" seatbelts with seven panel webbing. All Seatbelts can be custom made with any of the 58 colors and panel webbing choices that we offer. All 1974-1981 belts come with metal Starburst buckles and can be upgraded to GM logo buckles for an additional cost.

3 Point Conversion Kits

1967-1973



CAM6773-xxxx-(table)

CLL	Chrome Lift Latch
MPB	Metal Push Button
PPB	Plastic Push Button
GM	GM Metal Buckle

Buckle Options



- Front 3 Point Conversion Kit
- Coice of Buckles
- Aftermarket Buckle Sleeves
- Hardware Kit Included
- Some modification to vehicle may be required
- Installation Instructions Provided



- Front Premium 3 Point Kit
- Drop Sash with OE mounting bracket
- GM Metal Buckles
- Contoured Sleeves
- Direct Fit Mounting Bracket (Powder Coated)
- Includes Mounting Bolts

SBGM-xx-xxxx

(See price sheet for different vehicle combinations)



- Front Retractable Boots
- OE Left/Right Retractor Boots
- Sold Each Left or Right

6769RCL
6769RCR

Camaro

1967-2002

Seatbelt Solutions offers Original Equipment "Direct Fit" seatbelts with seven panel webbing. All Seatbelts can be custom made with any of the 58 colors and panel webbing choices that we offer. Our 1974-1981 Camaro Series use a single retractor instead of the factory dual retractor. Our system retains the ceiling mounted retractor and uses an anchor in place of the lap belt retractor which maintains the factory appearance when installed.

1974-1981

Standard Series



- Front Retractable Lap
- Single Retractor (Ceiling Mount)
- Starburst Push Button Buckle
- 7 Panel Webbing

CAM7481-xxxx



- Rear Lap Belts
- Starburst Push Button Buckle
- 7 Panel OE Webbing

CAM7481R-xxxx

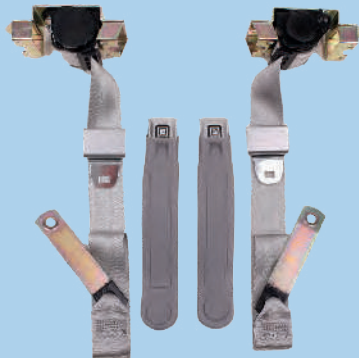


- Front and Rear Kit
- Starburst Metal Buckles & Sleeves
- No Hardware

CAM7481FR-xxxx

1974-1981

Premium Series



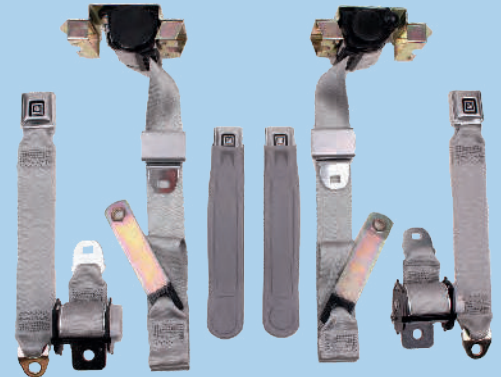
- Front Single Retractor 3 Point
- GM Metal Buckles & Sleeves
- 4 Panel OE Webbing
- No Hardware

CAM7481-xxxxOE



- Rear Lap Belts
- GM Metal Buckles
- 4 Panel OE Webbing
- No Hardware

CAM7481R-xxxxOE



- Front and Rear Kit
- GM Metal Buckles & Sleeves
- 4 Panel OE Webbing
- No Hardware

CAM7481FR-xxxxOE

1982-1992

1993-2002



- Front Single Retractor 3 Point
- End Release Buckle
- Includes Buckle Sleeves (Black only)
- No Hardware

CAM8292S-xxxx



- Front Single Retractor 3 Point
- End Release Buckle
- Use Factory Sleeves
- No Hardware

CAMF9302-xxxx

GM A-Body

1969-1971

Seatbelt Solutions offers "Direct Fit" OE inspired seatbelts for many A Body GM cars. We use 7 Panel webbing for the economy series, and 3 and 4 panel webbing for our standard and premium kits. The buckles used in the economy series are an aftermarket GM design. Standard and premium buckles are 100% factory correct.

A Body 1969-1971



- Front Retractable Lap Belt
 - 3 or 4 Panel OE Webbing
 - Deluxe OE Small GM Metal Buckle
 - OE Left and Right Retractor Boots
- 1600GMDQ730-xxxx(Color)**



- Front and Rear Retractable Lap Belt
 - 3 or 4 Panel OE Webbing
 - Deluxe OE Small GM Metal Buckle
 - OE Left and Right Retractor Boots
- 1600GMDQ730FR-xxxx(Color)**



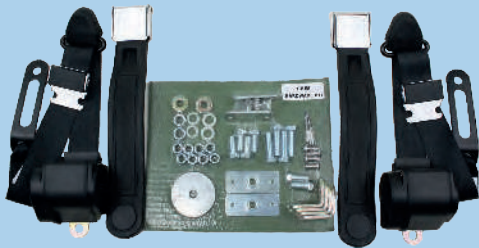
- Front and Rear Lab Belt Kit and Shoulder belt
 - 3 or 4 Panel OE Webbing
 - Deluxe OE Small GM Metal Buckle
 - OE Left and Right Retractor Boots
- 1600GMDQ730KIT-xxxx(Color)**



- OE Style Non-Retractable Shoulder Belts
 - 3 or 4 Panel OE Webbing
 - Deluxe OE Small GM Metal Buckle
 - OE Left and Right Retractor Boots
- 1600GMSH-xxxx(Color)**

3-Point Conversion kit

1964-1975



CHES6475-xxxx-(Table)-BEN/BUC

CLL	Chrome Lift Latch
MPB	Metal Push Buttonnnnn
PPB	Plastic Push Button
GM	GM Metal Buckle

- 3 Point Conversion Kit
- Chrome Lift Latch Buckles (Shown)
- Contoured Sleeves
- Vehicle Modifications may be required
- Includes Hardware Kit and Instructions (online)



- Front Premium 3 Point Kit
 - Drop Sash with OE mounting bracket
 - GM Metal Buckles
 - Contoured Sleeves
 - Direct Fit Mounting Bracket (Powder Coated)
 - Includes Mounting Bolts
 - Bench or Bucket Seat Available
- SBGM-xx-xxxx**

(See Price Sheet for different vehicle combinations)

Chevrolet Truck & El Camino 1947-1987

Seatbelt Solutions offers Conversion and "Direct Fit" OE inspired seatbelts for many Chevrolet Trucks. We use 7 Panel webbing for this series with matching plastics where available. Conversion kits are supplied with mounting hardware and instructions.

1947-1967

- 3 Point Conversion Kit
- Chrome Lift Latch Buckle
- 7 Panel Webbing
- Includes Hardware Kit
- Available for Bucket & Bench Seats



CHT4767-xxxx-(table)-BEN/BUC

CLL	Chrome Lift Latch
MPB	Metal Push Button
PPB	Plastic Push Button
GM	GM Metal Buckle

Buckle Options:

-  • Lift Latch
-  • Starburst Metal
-  • Plastic Push
-  • GM Metal Push

1967-72 (With in Cab Fuel Tank)



- 3 Point Direct Fit - Bucket or Bench Seat
- GM Plastic Buckles
- Contoured Sleeves or Floppy
- Buckle
- Hardware Provided

CHT67720EC-x-xxxx-BEN/BUC

Economy	OE Style Buckle (Shown)
Standard	Standard Irving OE Buckle
Premium	Deluxe Large GM Buckle



Standard
S



Premium
P



- 3 Point Direct Fit - Bucket or Bench Seat
- GM Metal Push Button Buckles
- Contoured Sleeves or Floppy Buckle
- Hardware Provided

CHT6772C-xxxx-BEN

1973-87



- 3 Point Direct Fit - Bucket Seat
- GM Metal Buckles w/Sleeves
- Contoured Sleeves
- Hardware Provided

CHT7387C-xxxx-BUC



- 3 Point Direct Fit - Bench Seat
- GM Metal Buckles - 20" Floppy End
- Contoured Sleeves
- Hardware Provided

CHT7387C-xxxx-BEN

Chevrolet El Camino 1978-1988



- 3 Point Direct Fit - Bucket Seat
- Metal Buckles w/Sleeves
- Contoured Sleeves
- NO Hardware Provided

7888-xxxx-BUC



- 3 Point Direct Fit - Bench Seat
- Metal Buckles w/Sleeves
- Contoured Sleeves
- NO Hardware Provided

7888-xxxx-BEN

General Motors

G-Body 1982-1988

Seatbelt Solutions offers a "Direct Fit" seatbelts for 1982-1988 Monte Carlo, Buick Regal/Grand National, Oldsmobile Cutlass and other G-Body Cars. We use 7 Panel webbing for this series with matching plastics where available and GM Metal push button buckles and the OE Metal Tongue and cover. Re-use Factory buckle sleeves and hardware.

1982-1988



- 3 Point "Direct Fit"
- Bucket Seat Application
- GM Metal Buckle with OE Tongue
- 7 Panel Webbing
- No Hardware

8288GBF-xxxx-BUC



- 3 Point "Direct Fit"
- Bench Seat Application
- GM Metal Buckle with OE Tongue
- 7 Panel Webbing
- No Hardware

8288GBF-xxxx-BEN



- 2 Point "Direct Fit"
- Rear Seat Application
- GM Metal Buckle
- 7 Panel Webbing
- No Hardware

8288GBR-xxxx

Conversion Vans

Seatbelt Solutions offers a variety of Conversion Van seatbelts. We offer units designed for Captain styled mid row chairs along with 2,3, or 4 Sofa seat kits. Sofa kits have the option of detachable shoulder sashes for easier removal of the sofa or we offer non-detachable hanging sashes. Extended length units are available for Tall Top vans such as Sprinters. We also offer integrated seatbelts with custom options available to fit your specific seats. Wired end release buckles are available in different lengths with customization available. Our wired buckles come pre wired with 3 wires allowing for either an open or closed circuit. Please contact our Sales department for part numbers, pricing and other options to meet your Conversion Van needs.



- *Captains Chair (Shown)*
- 3 Point - End Release Buckle
- Detachable Hanging Sash
- Accordion Style Buckle
- 7 Panel Webbing
- No Hardware

1413420E-xxxx



- *Sofa 3 (Shown)*
- 3 Point - End Release Buckle
- Detachable Hanging Sash Outers
- Non Detachable Ceiling 3 Point
- 7 Panel Webbing
- No Hardware

1413430E-xxxx



- Replacement Buckles
- Captain or Floppy End

E37228VS Tan
E37228SB Grey
E37228NF Graphite

- *Mounting Brackets*
- 6/8 Degree
- 90 Degree
- Powder Coated Finish
- Hardware sold separately



RAB68



- *Center Lap Belts*
- 60", 74", 90", 100" & 110" Lengths
- Plastic, Metal or End Release Buckles

(See price sheet for part numbers and buckle combinations)

Integrated Seat Belt Systems

Seatbelt Solutions offers a large variety of integrated seatbelt systems in addition to offering custom built systems to meet your seating. New for 2017 is our child lock retractor which operates the same as late model cars, trucks and SUV's allowing a child seat to be locked in properly with the ratcheting system featured in this retractor. Several colors and buckle styles are available so please contact our sales department with any questions you might have.



- **Low Mount Retractor**
- Custom Sheathing
- End Release Tongue
- 30 Degree Anchor
- Thru Seat Bezel
- 7 Panel Webbing



- **Top Mount Retractor**
- End Release Tongue
- Flat Anchor
- Thru Seat Bezel
- 7 Panel Webbing



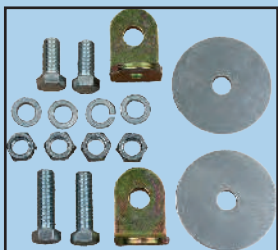
- **Thru Seat Bezels**
- One Piece Oval
- Two Piece Oval
- Two Piece Triangle



- **KISI Child Restraint Retractor**
- Upgrade for any System
- 505 Mounting hole
- Additional charge applies

Hardware and Kits

#1



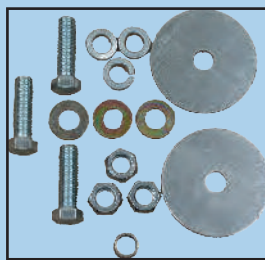
2 and 3 Point Retractable
HW#1

#2



Lap Belts
HW#2

#3



Non Retractable
shoulder belts
HW#3



Sister and Snap Hook Kit
HW#SisterSnap



Skin pack kits for 3 Point
Conversion Kits - Vehicle Specific
See Price Sheet



Shoulder Bolt
7/16" x 1 1/2"
BoltSoulder



CA53
Shoulder Bolt
Mounting Plate
CA53

Ford Mustang

1964-1993

Seatbelt Solutions offers 3 Point Conversion kits for 1964-73 Mustang Coupe, Convertibles and Fastbacks allowing a modern look and added safety over the factory lap belts. We also manufacture "Direct Fit" seatbelts for 1979-1993 Fox Body Mustangs. We use 7 panel webbing for this series with matching plastics where available.

1964-1973



MU6473PALR-xxxx

- 2 Point Retractable Lap belt
- Fits 1967-1973 Mustang
- Chrome Lift Latch Buckle
- No Hardware



- Reproduction of Original
- Fits 1965-70 Mustang w/Rollbar mount
- Starburst Plastic Push Button Buckle
- Retractable Lap Belt
- No Hardware **SHELBY**



- 60" Non Retractable Lap Belt
- Black Wrinkle Finish Lift Latch Buckle
- Hardware sold separately

MUI80160-xxxx

Buckle Options

CLL	Chrome Lift Latch
CPB	Chrome Push Button
PPB	Plastic Push Button

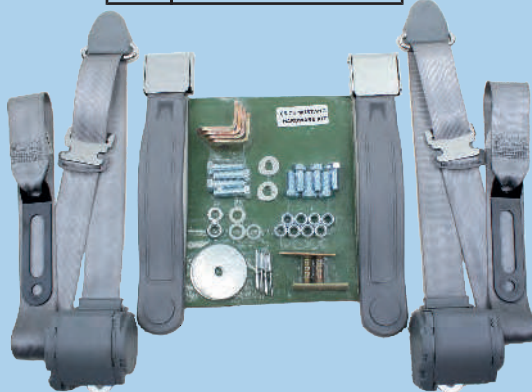


MUI80260-xxxx

- 3 Point Conversion Kit
- Fits 1967-1967 Mustang Coupe
- Fits 1964-1973 Convertible
- 116" Length
- Chrome Lift Latch Buckle
- Includes Hardware Kit

Front: MU36473-xxxx-(table)

Rear: MU36473R-xxxx-(table)



- 3 Point Conversion Kit
- Fits 1968-1973 Mustang Coupe
- Fits 1968-1973 Fastback
- 131" Length
- Chrome Lift Latch Buckle
- Includes Hardware Kit

MUI80260-xxxx

Front: MU36873-xxxx-(table)

Rear: MU36873R-xxxx-(table)

1979-1993



- Fits 1979-89 Foxbody Coupe & Convertible
 - Starburst Metal Buckle
 - 7 Panel Webbing
 - No Hardware
- MU7989-xxxx



- Fits 1990-93 Foxbody Coupe ONLY
 - Starburst Metal Buckle
 - 7 Panel Webbing
 - No Hardware
- MU9093-xxxx



- Fits 1979-89 Foxbody
 - Rear Retractable Lap Belts
 - Starburst Metal Buckle
 - No Hardware
 - Factory covers require modification and will not fit 100% over these larger retractors
- MU7989R-xxxx



- Electric Buckle end upgrade available
- MU7993WB-xxxx

Mopar

Seatbelt Solutions offers OE Styled "Direct Fit" replacement seat belts for several different Mopar vehicles along with 3 point conversion kits for a more modern function. We use 4 Panel OE webbing the same as Mopar did along with the period correct buckles.

A, B & E Body 1964-1974

1964-1967



- 2 Point Retractable Lap Belt
 - 4 Panel OE Webbing
 - A Body and B Body
 - Chrome Lift Latch Buckle
 - Bucket or Bench Seat
 - No Hardware
- 6467A2-xxxx**



- 3 Point Conversion
- 4 Panel OE Webbing
- A Body and B Body
- Chrome Lift Latch Buckle
- Bucket or Bench Seat
- No Hardware

36467A2-xxxx-BEN/BUC



- 60" Non Retractable REAR Lap Belt
- 4 Panel OE Webbing
- Chrome Lift Latch Buckle
- No Hardware

6467AB-xxxx-LB

1968-1970



- Fits 1968-70 A Body
- Wrinkle Lift Latch Buckle
- 4 Panel OE Webbing
- Bucket or Bench Seat

6870A2-xxxx-BEN/BUC



- Fits 1968-70 B Body
- Wrinkle Lift Latch Buckle
- 4 Panel OE Webbing
- Bucket or Bench Seat

6870B2-xxxx-BEN/BUC



- Fits 1968-70 A & B Body
- 3 Point Conversion Kit
- Bucket or Bench Seat
- Wrinkle Lift Latch Buckle
- No Hardware

3-6870B2-xxxx-BEN/BUC



- 60" Non Retractable REAR Lap Belt
- Black Wrinkle Finish Lift Latch Buckle
- 4 Panel OE Webbing
- Sold as Each

6870AB-xxxx-LB



- 3 Point OE Style Kit
- Bucket or Bench Seat
- Manual Shoulder
- Retractable Lap Belt
- A or B Body
- Includes Visor Mount for Shoulder Belt

A-Body 6870EA-xxxx-SH-BEN/BUC

B-Body 6870EB-xxxx-SH-BEN/BUC



Visor Mounts
6870VB

Mopar

A, B & E Body

Seatbelt Solutions offers OE Styled "Direct Fit" replacement seat belts for several different Mopar vehicles along with 3 point conversion kits for a more modern function. We use 4 Panel OE webbing the same as Mopar did along with the period correct buckles.

1964-1974

1971-1974



- Retractable Lap Belt
 - Manual Shoulder Belt
 - Starburst Metal Push Button Buckle
 - 4 Panel OE Webbing
 - Bucket or Bench Seat
- 2-7174-xxxx-BUC



- 3 Point Conversion
 - Bucket or Bench Seat
 - Starburst Metal Push Button Buckle
 - 4 Panel OE Webbing
- 3-7174-xxxx-BEN/BUC



- 60" Non Retractable REAR Lap Belt
 - Starburst Metal Push Button Buckle
 - 4 Panel OE Webbing
- 1202-xxxx-RLB

Bronco

1968-1986

Seatbelt Solutions offers OE Styled "Direct Fit" replacement seat belts for your Bronco. we use 3 Panel OE webbing the same as Ford used along with the period correct buckles.



- 2 Point Lap Belt
 - Non Retractable
 - Plastic Starburst Push Button Buckle
 - 3 Panel OE Webbing
 - Other Colors Available
 - Plastics Color Matched Where Available
- B180274-xxxx



- 1968-1977 Direct Fit
 - 2 Point Retractable Lap Belt
 - Plastic Starburst Push Button Buckle
 - 3 Panel OE Webbing
 - Other Colors Available
 - Plastics Color Matched Where Available
- B6877P-xxxx



- 1978-1979 Direct Fit
 - 3 Point Retractable
 - Metal Starburst Push Button Buckle
 - 3 Panel OE Webbing
 - Other Colors Available
 - Plastics Color Matched Where Available
- B7879P-xxxx



- 1980-1986 Direct Fit
 - 3 Point Retractable
 - Metal Starburst Push Button Buckle
 - 3 Panel OE Webbing
 - Other Colors Available
 - Plastics Color Matched Where Available
- B8086P-xxxx

Jeep 1976-2006

Seatbelt Solutions offers OE Styled "Direct Fit" replacement seat belts for several different Jeep vehicles along with Universal Belts. All Plastics come in black only and use 7 Panel webbing.

1976-1981



- Retractable Lap Belt
- Starburst Metal Push Button Buckle
- Contoured Plastic Buckle Sleeve
- 7" Retractor Boot
- Sold as Pairs

Q7681P-xxxx

1976-1991 Rear



- Non-Retractable Lap Belt
- Starburst Metal Push Button Buckle
- Sold as Pairs

Q1203P-xxxx

1982-1991 Front



- Direct Fit 3 Point Retractable Belts
- Starburst Metal Push Button Buckle
- Re-use Factory Buckle Sleeves
- Sold As Pairs

Q8291P-xxxx



- **KISI Offroad Restraint Retractor**
- Upgrade for any System
- 505 Mounting hole
- Additional charge applies

1992-1995 Front



- Direct Fit 3 Point Retractable Belts
- Starburst Metal Push Button Buckle
- Re-use Factory Buckle Sleeves
- Sold As Pairs

Q9295P-xxxx

1992-1995 Rear



- Direct Fit 3 Point Retractable Belts
- Starburst Metal Push Button Buckle
- Sold As Pairs

Q9295R-xxxx

1997-2006 Front



- Direct Fit 3 Point Retractable Belts
- Uses Factory Buckles
- Sold As Pairs

Q9706P-xxxx

1997-2006 Rear



- Direct Fit # Point Retractable Belts
- End Release Buckle
- Includes Anchor Covers
- Uses Factory Mounting holes
- Sold as Pairs

Q9706R-xxxx

1984-1996 Jeep Cherokee

4 Door



- Direct Fit 3 Point Retractable Belts
- Starburst Metal Push Button Buckle
- Re-use Factory Buckle Sleeves
- Position Sensitive Retractors
- Sold As Pairs

Q8496P-xxxx

2 Door Loop ends



- Direct Fit 3 Point Retractable Belts
- Starburst Metal Push Button Buckle
- Re-use Factory Buckle Sleeves
- Position Sensitive Retractors
- Loop Ends
- Sold As Pairs

Q8496P2DR-xxxx-LE

2 Door Bolt In



- Direct Fit 3 Point Retractable Belts
- Starburst Metal Push Button Buckle
- Re-use Factory Buckle Sleeves
- Position Sensitive Retractors
- Bolt In Ends
- Sold As Pairs

Q8496P2DR-xxxx-BI

Replacement Buckles



Q8496BS

Q8496WB

- **Replacement Sleeves (Ea)**
- **Wired Buckle with Sleeve**

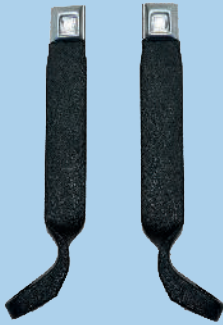
Jeep 1971-2006

Seatbelt Solutions offers OE Styled "Direct Fit" replacement seat belts for several different Jeep vehicles along with Universal Belts. All Plastics come in black only and use 7 Panel webbing.

Replacement Buckles and Sleeves



- 1982-1991
- Buckle Sleeves
- Left
- Right
- Sold Each
- Q829IBSR
- Q829IBSL



- 1982-1991
- Starburst Buckle with Sleeves
- Left
- Right
- Sold Each
- Q829IBSRWB
- Q829IBSLWB



- 1992-1995
- Buckle Sleeves
- Left
- Right
- Sold Each
- Q9295BSR
- Q9295BSL



- 1992-1995
- Starburst Buckle with Sleeves
- Left
- Right
- Sold Each
- Q9295BSRWB
- Q9295BSLWB



- 1997-2002
- OE Replacement Buckle
- Left (Wired)
- Right (NO Wire)
- Sold Each
- Q9702R
- Q9702L



- 2003-2006
- OE Replacement Buckle
- Left (Wired)
- Right (NO Wire)
- Sold Each
- Q0206R
- Q0206L

Universal Jeep Seatbelts and Buckle Extension Bars



- BELT1
- Non-Retractable Lap Belt
- Plastic Push Button Buckle
- Includes Hardware
- Sold Each
- QBELT1-xxxx



- BELT2
- Retractable Lap Belt
- Plastic Push Button
- Buckle in Sleeve
- Includes Hardware
- Sold Each
- QBELT2-xxxx



- BELT3
- Retractable 3 Point
- Plastic Push Button
- Buckle in Sleeve
- Includes Hardware
- Sold Each
- QBELT3-xxxx



- BELT4
- Retractable 3 Point
- Plastic Push Button
- Floppy Buckle End
- Includes Hardware
- Sold Each
- QBELT4-xxxx



- A / B Bars Powder Coated Black
- Used to raise buckle ends
- Sold as Pairs
- QBELTPRKPRB



- A / B Bars
- Used to raise buckle ends
- Sold Each
- A-Bar
- B-Bar

Universal Seat Belts

Seatbelt Solutions offers a full line of universal lap belts, retractable lap belts along with 3 point seatbelt systems. Many different buckles, mounting anchors and retractors are available to meet the need of virtually any application.

- 2 Point Non Retractable Lap Belt
- 7 Panel Webbing
- 30 Degree Mounting anchors



Buckle Options



Plastic Push Button
(Red Sticker)
1201-Length-Color



Chrome Lift Latch
(Aftermarket and OE Design Available)
1800-Length-Color



End Release
(Black, Grey & Tan)
1511-Length-Color



Plastic Push Button
(Black Sticker)
1201-Length-Color-BP



Satin Lift Latch
(Aftermarket and OE Design Available)
1806-Length-Color



GM Plastic Push Button
305GM-Length-Color



Starburst Metal Push Button
1203-Length-Color



Bowtie Lift Latch
(Aftermarket Design)
1803-Length-Color

Anchor Options



Large Flat
Zinc Finish



Large Flat
Chrome



300605
Zinc



Flat605
Zinc



Flat505
Zinc



GM Metal Push Button
1205-Length-Color



Black Wrinkle Lift Latch
1801-Length-Color



Chrome
Tear Drop



Sister Hooks



Snap Hook

2 Point Retractable Lap Belts



HL1201H-xxxx

- Automatic Locking Retractor
- Overall Length 54" - 60"
- 4" or 7" Retractor Housing
- 8" or 12" Contoured Sleeve
- No Sleeve Floppy Design Optional
- Plastic Push Button Buckle
- Metal Push Button Buckle
- Chrome Lift Latch Buckle
- Bowtie Lift Latch Buckle
- Wrinkle Lift Latch Buckle
- 7 Panel Webbing
- Sold Each (1 Retractor, 1 Buckle)



3056MDQ7293P-xxxx

- **GM "A" Body 1967-1972**
- Non Locking Retractor
- Overall Length Approximately 60"
- 3 Panel OE Webbing
- GM Plastic Push Button Buckle
- Color Matched Plastics where available
- Does not include mounting hardware

Universal Retractable Lap Belts

Seatbelt Solutions offers many styles of 2 point retractable lap belts suitable for industrial applications. This page is dedicated to the different retractors and buckle options we offer. Most colors are limited to black unless stated otherwise.

MR2000 Series Retractable Lap Belts

Commonly used for Forklifts and other utility applications *Available in Black, Orange and Red 7 Panel Webbing only*



- 4" or 10" Retractor (4" Shown)
- 12" Contoured Sleeve
- Optional 8" Sleeve Available
- Metal Starburst Push Button Buckle

MR20004H-xxxx-MPB



- 4" or 10" Retractor (4" Shown)
- 12" Contoured Sleeve
- Optional 8" Sleeve Available
- Chrome Lift Latch Buckle

MR20004H-xxxx-CLL



- 4" or 10" Retractor (4" Shown)
- 12" Contoured Sleeve
- Optional 8" Sleeve Available
- Plastic Push Button Buckle

MR20004H-xxxxPPB



MR15114H-xxxx **MR15110H-xxxx**



- 4" or 10" Retractor (4" Shown)
- 20" Floppy Buckle
- Metal Starburst Push Button Buckle

MR20004F-xxxx



- 4" or 10" Retractor (4" Shown)
- Adjustable 24" Floppy
- Chrome Lift Latch Buckle

MR20004F-xxxx-CLL



- 4" or 10" Retractor (4" Shown)
- 20" Floppy Buckle
- Plastic Push Button Buckle

MR20004F-xxxx-PPB



- 4" or 10" Retractor
- Cable Buckle End
- 20" Floppy
- 6" Stake
- 9", 12", 14", 18" or 22" Cable
- Wired Available in 6", 9" & 12"

Anti-Cinch Series Retractable Lap Belts



- 2" Webbing
- 4" Retractor Housing
- End Release buckle w/wire (Shown)
- NON-Wired buckle available



- 3" Webbing
- 4" Retractor Housing
- End Release buckle w/wire (Shown)
- NON-Wired buckle available

Bus Baby Lap Belt



- Approximately 74" Mounting hole to mounting hole
- Traveling Retractor design
- 20" Buckle Side
- Plastic Push Button Buckle
- Available In Black Webbing ONLY

74BBTR

Universal 3 Point Seat Belts

Seatbelt Solutions offers Universal 3 Point systems in either a Non retractable design or Retractable. Several different mounting anchors are available. The items listed on this catalog page are the default designs most commonly used. all Universal 3 points come with 7 panel webbing and color matched plastic where available.

Non Retractable 3 Point Belts



Bucket Seat Design

- Shoulder side 95" Long
- 12" Sleeve (8" Optional)
- 7 Panel Webbing
- Plastics Color Matched Where Available

Buckle Options

- Plastic Push Button
- Metal Push Button
- GM Metal Push Button
- Chrome Lift Latch
- Satin Lift Latch
- Bowtie Lift Latch

CH20IH-xxxx



Bench Seat Design

- Shoulder side 95" Long
- Floppy Buckle Side
- 7 Panel Webbing
- Plastics Color Matched Where Available

Buckle Options

- Plastic Push Button
- Metal Push Button
- GM Metal Push Button
- Chrome Lift Latch
- Satin Lift Latch
- Bowtie Lift Latch

CH300F-xxxx

Roadster 3 Point Retractable Belts



Bucket Seat Design

- No Shoulder Mount Design
- 12" Sleeve (8" Optional)
- 7 Panel Webbing
- Plastics Color Matched Where Available

Buckle Options

- Plastic Push Button
- Metal Push Button
- GM Metal Push Button
- Chrome Lift Latch
- Satin Lift Latch
- Bowtie Lift Latch

404-1-xxx



Bench Seat Design

- No Shoulder Mount Design
- Floppy Buckle Side
- 7 Panel Webbing
- Plastics Color Matched Where Available

Buckle Options

- Plastic Push Button
- Metal Push Button
- GM Metal Push Button
- Chrome Lift Latch
- Satin Lift Latch
- Bowtie Lift Latch

414-2-xxxx

Retractable 3 Point Belts



Bucket Seat Design

- HLG10 Web Sensitive Retractor
- 134" of webbing
- 12" Sleeve (8" Optional)
- 5" Mounting Anchor
- 7 Panel Webbing
- Plastics Color Matched Where Available

Buckle Options

- Plastic Push Button
- Metal Push Button
- GM Metal Push Button
- Chrome Lift Latch
- Satin Lift Latch
- Bowtie Lift Latch

3PTPPH-xxxx



Bench Seat Design

- HLG10 Web Sensitive Retractor
- 134" of webbing
- Floppy Buckle Side
- 5" Mounting Anchor
- 7 Panel Webbing
- Plastics Color Matched Where Available

Buckle Options

- Plastic Push Button
- Metal Push Button
- GM Metal Push Button
- Chrome Lift Latch
- Satin Lift Latch
- Bowtie Lift Latch

3PTPPF-xxxx



Bucket Seat Design

- HLG10 Web Sensitive Retractor
- 134" of webbing
- 12" Sleeve (8" Optional)
- 30 Degree 505" Anchor
- 7 Panel Webbing
- Plastics Color Matched Where Available

Buckle Options

- Plastic Push Button
- Metal Push Button
- GM Metal Push Button
- Chrome Lift Latch
- Satin Lift Latch
- Bowtie Lift Latch

3PTMBH-xxxx



End Release Cable Buckle

- HLG10 Web Sensitive Retractor
- 134" of webbing
- End Release Buckle
- 30 Degree 505" Anchor
- 7 Panel Webbing
- Plastics Color Matched Where Available

Buckle Options

- 6" Stake Buckle
- 12" Cable
- 18" Cable
- 22" Cable
- 6" Stake and 12" Cable wired (3 wire open or closed loop)

3PTERC12-xxxx (shown)



End Release Stake Buckle

- D210 Web Sensitive Retractor
- 134" of webbing
- End Release Buckle
- 30 Degree 505" Anchor
- 7 Panel Webbing
- Plastics Color Matched Where Available

Buckle Options

- 6" Stake Buckle
- 12" Cable
- 18" Cable
- 22" Cable
- 6" Stake and 12" Cable wired (3 wire open or closed loop)

WSCHI4134-6-xxxx (shown)

Color Components

Seatbelt Solutions offers a large variety of components in our most commonly purchased webbing colors. This page shows the color matched plastics currently available. All other webbing colors will come with black plastics.

Buckles

Plastic Push Button with Red Press Insert



Plastic Push Button with Black Press Insert

310 Retractors



- Red
- Black
- Turquoise
- Maroon
- Tan
- Gray
- Navy
- Blue

4" ALR Cover



- Gray
- Black
- Navy
- Red
- Tan
- Maroon

7" ALR Covers



12" Contoured Buckle Sleeves



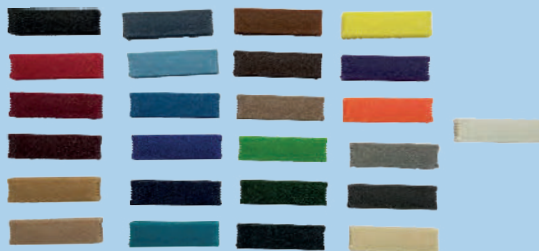
- Black
- Turquoise
- Charcoal
- Red
- Flame Red
- Gray
- Medium Beige
- Blue
- Tan
- Maroon
- Navy

DPF Covers



- Flame Red
- Red
- Maroon
- Blue
- Turquoise
- Tan
- Gray
- Navy

Web Guides



- Black
- Flame Red
- Red
- Maroon
- Tan
- Medium Beige
- Lime Green
- Military Green
- Navy
- Powder Blue
- Blue
- Cobalt Blue
- Electric Blue
- Copper
- Dark Brown
- VS
- Yellow
- Purple
- Orange
- Gray
- Charcoal
- Ivory
- White

Tongue Covers



- Black
- Tan
- Gray
- Flame Red
- Blue
- Charcoal
- Red
- Tan
- White
- Maroon
- Turquoise

D210 Covers



HL610 Covers



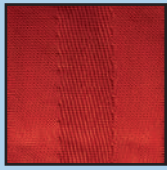
- Tan
- Navy
- Red
- Black
- Gray
- Flame Red
- Maroon

Webbing Colors

1963 Corvette 3 Panel DE



1000 Black



2006 Red



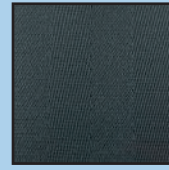
3000 Saddle



4004 Dark Blue

- DE Fabric Weave
- DE 3 Panel with equal bar width
- DE Colors

4 Panel DE



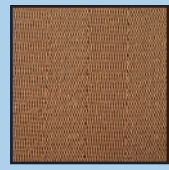
1000 Black



2006 Flame Red



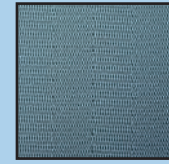
2007 Red



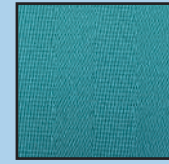
3000 Saddle



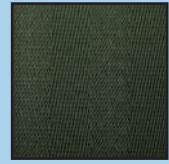
4004 Dark Blue



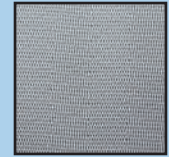
4007 Frost Blue



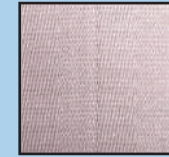
4009 Turquoise



5002 Military Green

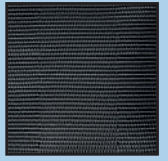


6005 Gray

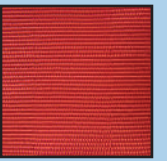


9001 Oyster

3 Panel DE



1000 Black



2006 Flame Red



2007 Red



2008 Maroon



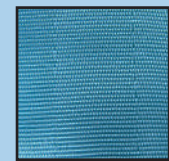
3000 Saddle



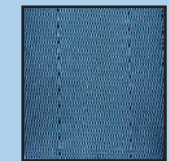
3007 Tobacco



3008 Medium Saddle



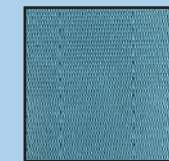
4001 Bright Blue



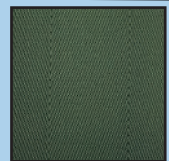
4003 Med Blue



4004 Dark Blue



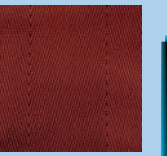
4008 Teal Blue



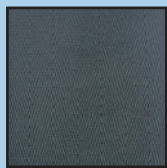
5002 Military Green



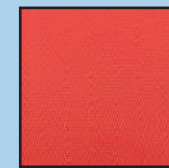
6005 Silver



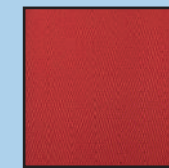
7001 Cinnabar



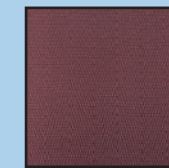
1000 Black



2006 Flame Red



2007 Red



2008 Maroon



2009 Red Wine



2010 Purple

7 Panel Webbing



2011 Wine & Roses



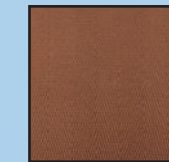
2012 Wisteria



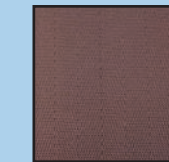
2013 Hot Pink



3000 Tan



3004 Copper



3005 Dark Brown



3008 Medium Beige



3009 Desert Tan



4000 Electric Blue



4002 Blue



4004 Dark Blue



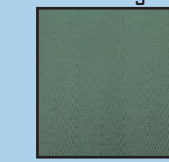
4005 Powder Blue



4006 Cobalt Blue



4009 Turquoise



5002 Military Green



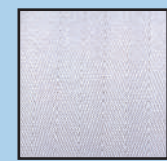
5004 Lime Green



5006 Dark Green



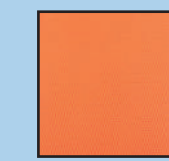
6005 Gray



6007 Silver



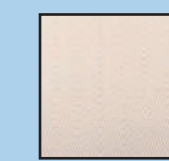
6009 Charcoal



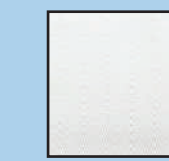
7001 Orange



7500 Yellow



8000 Ivory



9000 White



Seatbelt Solutions

Onsite Testing Facility

All Products meet
FMVSS 209/302 Standards

Certifications available upon
request within 24 hours



Seatbelt Solutions

New Items

K-5 Blazer 1973 - 1991



- These are exceptional quality OEM type replacement seat belts.
- Seatbelt Solutions reliable reproductions provide the highest safety standards that meet or exceed 209/302 FMVSS approval.
- The GM metal buckle provides terrific durability with an exact fit and phenomenal performance.
- Available In Any Of Our 50 Different Colors

Nova 1974 - 1979



- Seatbelt Solutions Nova 3-point retractable seat belts provide the highest safety standards that meet or exceed 209/302 FMVSS.
- These seat belts are the finest replacements available on the market. Simply remove your worn or damaged belts and install this new "Direct Fit" replacement.
- Comes With OEM Style Buckles
- Available In Any Of Our 50 Different Colors

All Products Tested On Site
Products Meet or Exceed FMVSS 209/302
Meets SAE J386 Specifications



Seatbelt Solutions

New Items

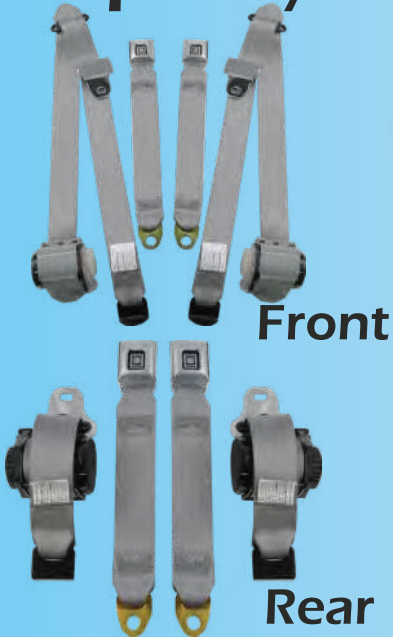
Ford Truck 1978 - 1986



1978 - 1979 1980 - 1986

- Seatbelt Solutions Ford truck 3-point retractable seat belts provide the highest safety standards that meet or exceed 209/302 FMVSS.
- These seat belts are the finest replacements available on the market.
- Simply remove your worn or damaged belts and install this new "Direct Fit" replacement.
- Comes With OEM Style Buckles & Sleeves
- Available In Any Of Our 50 Different Colors

Impala / Caprice 1991 - 1996



Front

Rear

- These are exceptional quality OEM type replacement seat belts.
- Seatbelt Solutions reliable reproductions provide the highest safety standards that meet or exceed 209/302 FMVSS approval.
- The GM metal buckle provides terrific durability with an exact fit and phenomenal performance.
- Comes With OEM Style Buckles & Tongues
- Available In Any Of Our 50 Different Colors

All Products Tested On Site
Products Meet or Exceed FMVSS 209/302
Meets SAE J386 Specifications



Learn more about automotive seats we have.