



MAGICMOUNT MAGWDM/MAGWDMI

MAGNETIC FLEX MOUNT

FOR MOBILE DEVICES & SMALL TABLETS (8 INCHES OR LESS)

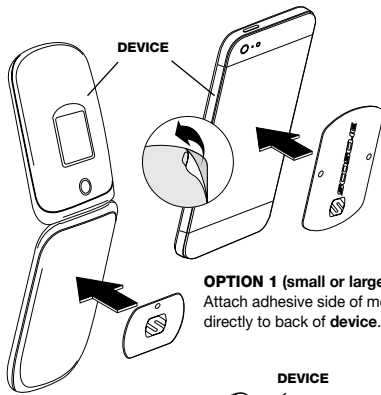
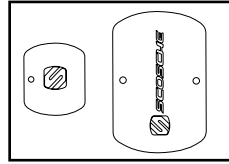
PARTS INCLUDED

- (1) Magnetic mount with suction cup mount and flexible neck
- (1) Small metal plate (1) Large metal plate
- (1) 3M mounting disc for suction cup mount

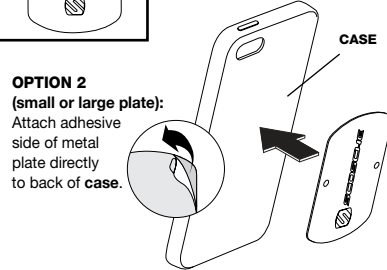
READ INSTRUCTIONS COMPLETELY BEFORE INSTALLING THIS MOUNT KIT. WARNING: Use caution whenever removing or handling plastic parts of any vehicle. Unnecessary force or pressure can cause pieces to crack or break. Please use a plastic card to remove the metal plates. Remove adhesive residue with a non-abrasive cleaner.

1 MOUNTING THE METAL PLATE

Note: This item is not to be used with any Qi Wireless Charging products as the metal plates can cause extreme heat that can cause burns and/or damage the device.



OPTION 1 (small or large plate):
Attach adhesive side of metal plate directly to back of device.

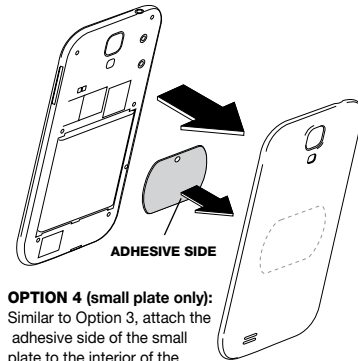
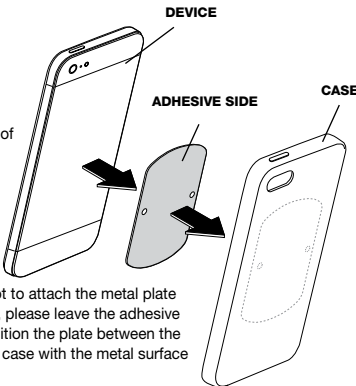


OPTION 2 (small or large plate):
Attach adhesive side of metal plate directly to back of case.

OPTION 3 (large plate only):

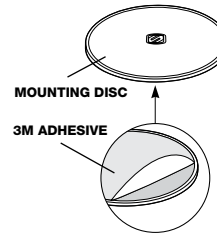
Attach adhesive side of metal plate to interior of case, between device and inside of case. Plate will adhere to magnetic mount through rear panel of case.

NOTE: If choosing not to attach the metal plate to the device or case, please leave the adhesive backing in place. Position the plate between the device and interior of case with the metal surface facing the case.

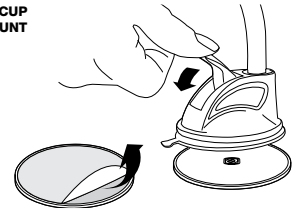
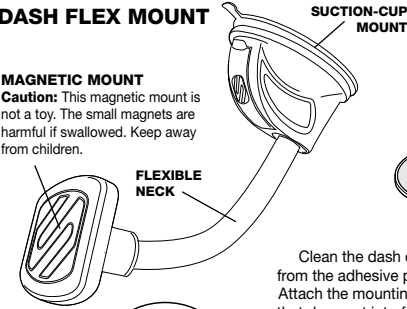


OPTION 4 (small plate only):
Similar to Option 3, attach the adhesive side of the small plate to the interior of the device's rear battery compartment cover (if space and design permit). Plate will adhere to magnetic mount through the rear battery cover.

2 WINDSHIELD/DASH FLEX MOUNT



MAGNETIC MOUNT
Caution: This magnetic mount is not a toy. The small magnets are harmful if swallowed. Keep away from children.

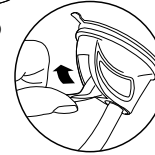


USING THE MOUNTING DISC

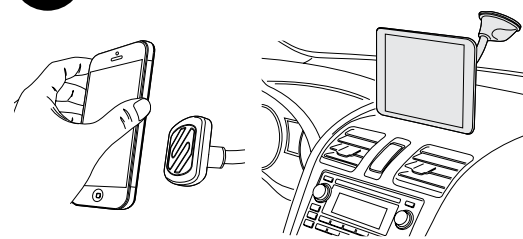
Clean the dash of dust and debris. Remove the backing from the adhesive pad on the bottom of the mounting disc. Attach the mounting disc to an area of the dash or console that does not interfere with the operation of the vehicle. **Do not mount near or over airbag deployment area.** Attach the suction cup mount to the mounting disc and lock the suction lever to secure the mount.

MOUNTING TO THE WINDSHIELD

Make sure the area of the windshield is clean and DOES NOT obstruct your view of traffic. Position the suction cup on the surface of the windshield and hold the base firmly as you close the lever and lock the base in position.



3 ATTACH DEVICE TO MAGNETIC MOUNT



4

REMOVING THE METAL PLATE

Use a thin plastic card to carefully lift the plates' adhesive surface from the mounting surface. Slowly lift up and remove the plate.

