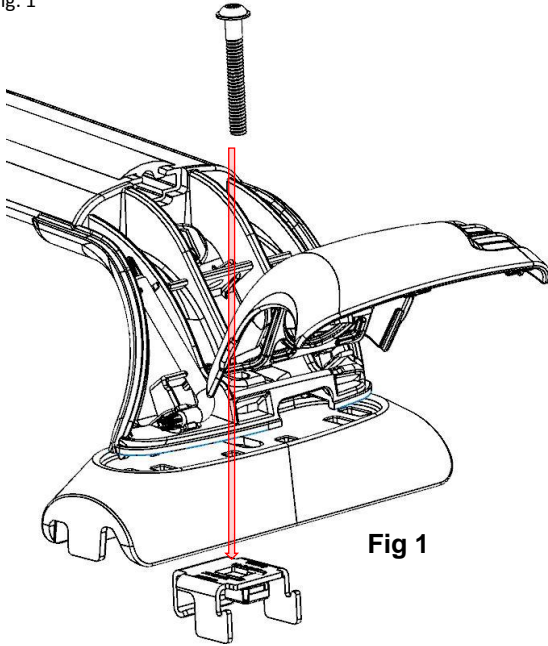


**Note: Prior to Assembly**

Prior to assembling your Crossbar kit check that the kit contains all the parts you will need to fit the Crossbars. Refer to parts lists for guidance. L-Wrench is stored in the End Support. Please read these instructions before assembly.

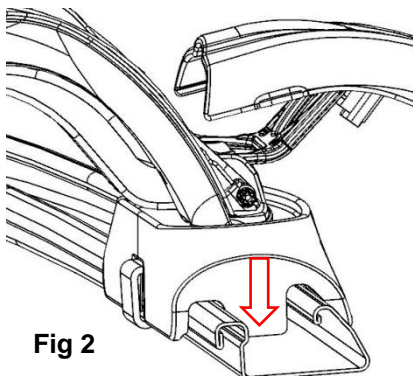
**Step 1:**

Loosely Assemble the 40mm Bolt through the end support, Adapter foot and the Strap/Nut assembly to each of the 4 end supports as shown below in Fig. 1



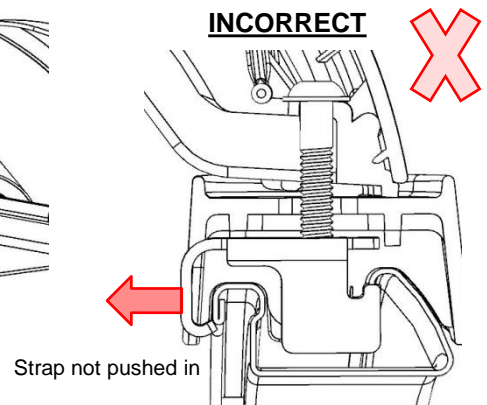
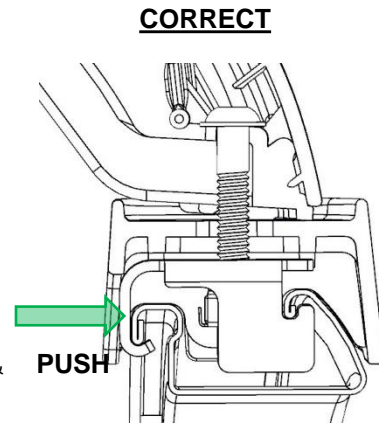
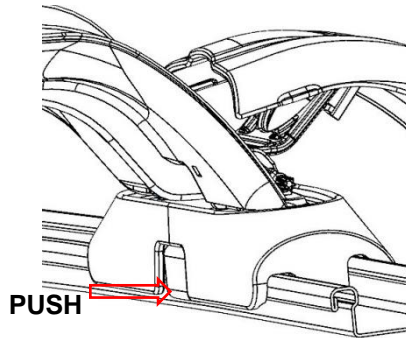
**Step 2:**

Guide the End support and Strap down into the roof rail channel until it is resting on it as shown in Fig. 2



**Step 3:**

Push the strap into the end support and under the lip on the roof rail (push away from the vehicle center). Check that the Strap is pushed into position correctly as Shown in Fig. 3a, 3b & 3c before continuing to step 4



← Towards center of vehicle

← Strap not pushed in

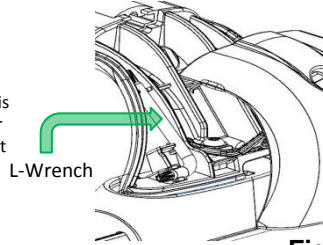
### Parts list

- Key (4)
- Crossbar / End Support Assembly FRONT is labeled FRONT
- L-Wrench – Security Key(2) (Stored in End Support)
- Plastic adaptor (4)
- 40mm Bolt (4)
- Strap / Nut assy. (4)

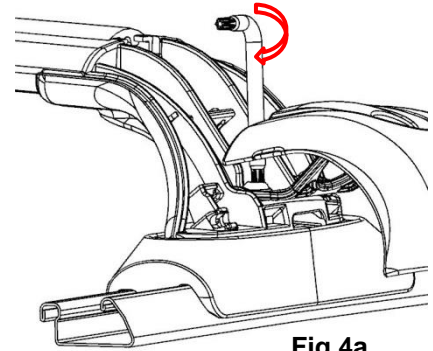
**Step 4:**

While Taking care to ensure that the strap stays oriented in the roof rail correctly as shown in step 3 above. Use the L-Wrench Security Key to tighten the Bolt to approximately 5Nm (44 in/lbs) of torque or a firm hand-tightness. Fig. 4a. Repeat Steps 2 though 4 for the opposite side end support and then then the remaining Crossbar assembly assuring proper fit and alignment. Replace the supplied torx L-wrench to its stowed position in the end support. Fig 4b

Note: The FRONT and REAR Crossbars are NOT the same length. The FRONT Crossbar is longer. The Crossbar labeled "FRONT" on the underside of the Crossbar, belongs to the front location. The remaining bar, without the label, belongs to the rear location. It is recommended the spacing between the front and rear bar is 700mm. Some accessories may require a different spacing.



**Fig 4b**



**Fig 4a**

**Step 5: Attaching Covers to End Supports**

Should you need to remove your GTX covers the following describes the replacement and use.

Locate the ends of the Hinge with the Cover hinge holes. Flex the Hinge ends in and push through the Cover holes until the capped ends engage. (you'll hear and audible click) (Fig 6, 7)

To fully extend the Covers away from the Support (to access the Accessory Channel or mounting hardware) pivot the Cover on the Hinge while pushing down on the top of the Cover. (Fig 10, 11)

**Step 6: Closing the End Support Covers**

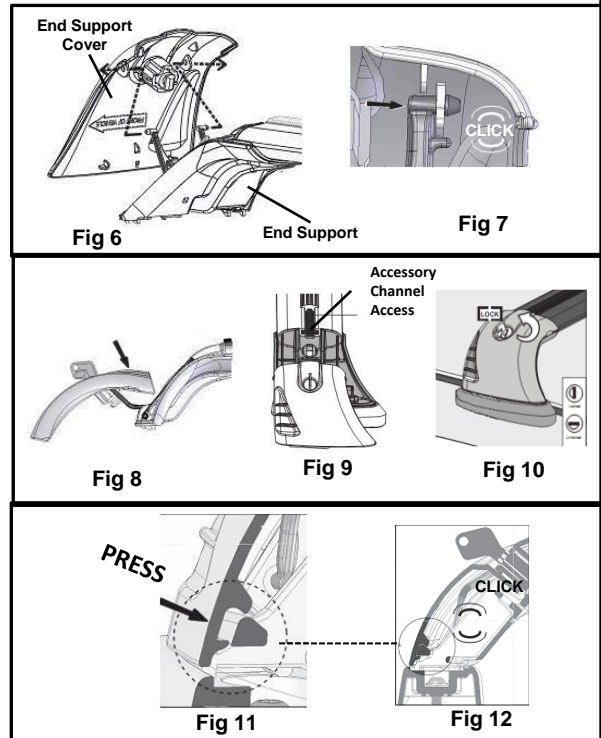
Close the End Support Covers by moving the cover up, over, and then down on the End Support. Push Cover against the End Support until you hear an audible "click", indicating the Cover is fully engaged with the End Support. (fig 13, 14) . Lock all four covers into place using the keys provided. (Fig 12) Store your keys in a safe place such as the glove box or key ring. Replacement locks and keys are available as service items.

**Step 7: Mounting Accessories**

You are now ready to mount your accessories examples: Bike, Kayak, luggage carriers by using the Accessory Channel if applicable (fig 11). "T" bolts are available to mount accessories. Be sure to cut your buffer strips to size to completely cover your channel once the accessories are mounted. Replacement Buffer Strips are available as service items.

**General Usage Information**

- \* It is essential for the proper assembly, operation and use of the Roof Rack that the instructions and safety precautions supplied are strictly observed.
- \* The maximum permissible load for your roof rack is the lower of the maximum load capacity specified in your vehicle owner's manual or specified on your roof rack load label. Do NOT exceed the maximum load capacity. Maximum load capacity equals the weight of the rack + accessories + weight of cargo.
- Ensure your vehicle's function is not impaired before driving.



**⚠ REGULARLY CHECK THE TIGHTNESS OF CROSSBAR ATTACHMENTS.**

**⚠ Loads should be evenly distributed and secured.**

**⚠ Check the function of all doors and sunroof before driving.**

**⚠ Any weight carried on the vehicle will adversely affect its handling particularly in cornering or in a cross wind and the vehicle should therefore be driven with increased caution.**

**⚠ Only use NON-STRETCH tie down straps.**

**A number of accessories for carrying special loads are available.**