



INSTRUCTION GUIDE FOR:
FIXED POINT FIT KIT SYSTEM

**Fixed Point Fit Kit:
KIT CKBH**

Vehicle Description

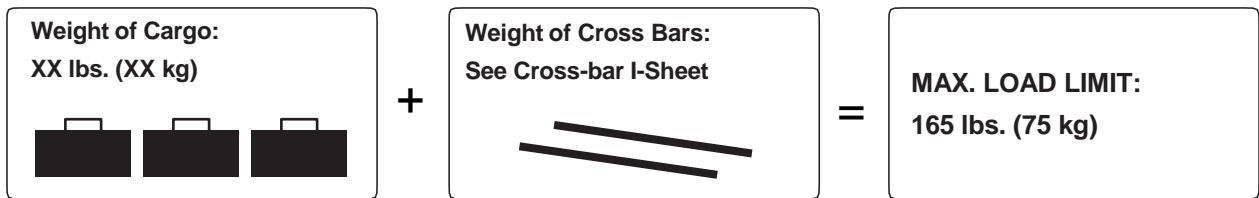
BMW 1-Series 3-dr Hatchback 2008 - 2013
BMW 1-Series 2-dr Coupe 2008 - 2013
BMW 2-Series 2-dr Coupe 2014 -
BMW 3-Series 2-dr Coupe 2000 - 2005
BMW 3-Series 4-dr Sedan 1999 - 2005
BMW 3-Series 4-dr Sedan 2006 - 2011
BMW 3-Series 4-dr Sedan 2012 -
BMW 3-Series 5-dr Wagon 2013 -
BMW 3-Series GT 5-dr Hatchback 2014 - 2015
BMW 4-Series 4-dr Coupe 2015 - 2016
BMW 5-Series 4-dr Sedan 1997 - 2003
BMW 5-Series 5-dr Wagon 1999 - 2003
SUBARU Outback Sport 5-dr Wagon 2008 - 2011
SUBARU Impreza 4-dr Sedan 2008 - 2011
SUBARU Impreza WRX & STI 5-dr Hatchback 2012 - 2014
SUBARU Impreza WRX & STI 4-dr Sedan 2012 - 2014
SUBARU Impreza 5-dr Hatchback 2008 - 2016
SUBARU XV Crosstrek 5-dr Hatchback 2008 - 2016
SUBARU Impreza Sport 4-dr Sedan 2017 -
SUBARU Impreza Sport 5-dr Hatchback 2017 -

**These instructions contain IMPORTANT safety information. Please read and keep for future reference.
NOTE: This Fit Kit instruction sheet is a supplement to the End Support instructions.**

! WARNING

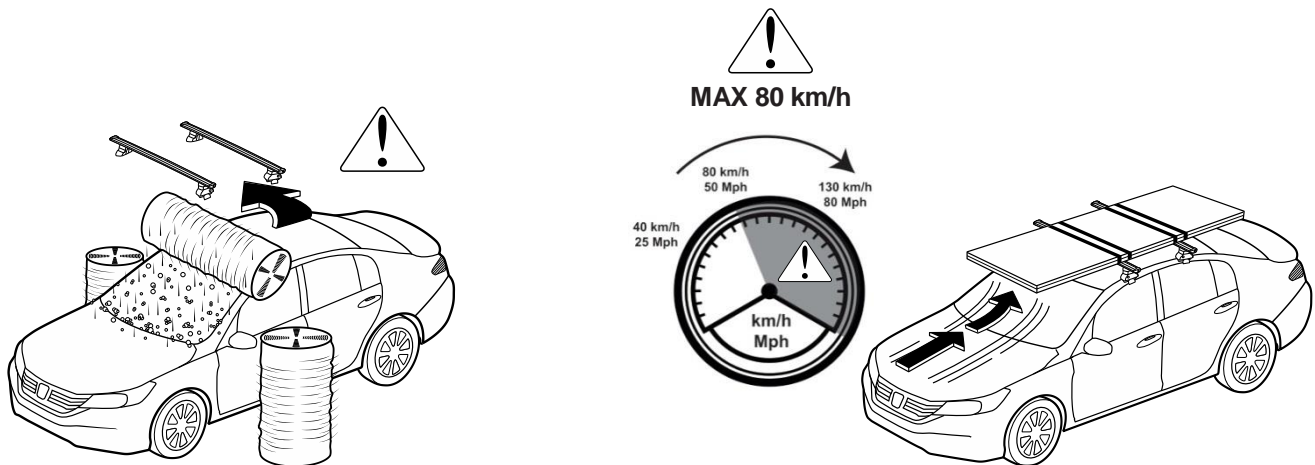
Users must read and understand all warnings and precautions before using the ROLA cross bar systems.

- Maximum roof loads = weight of the cross bars + accessories + the weight of the load carried. Maximum load is defined by ROLA or the Manufacturer- use which ever is lower.



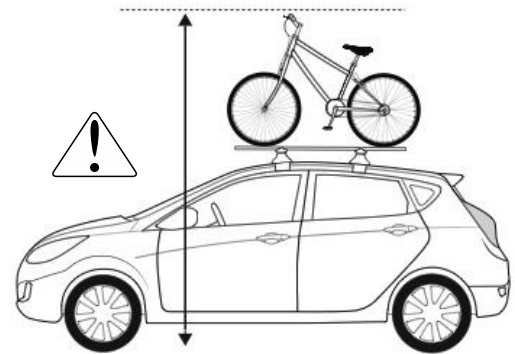
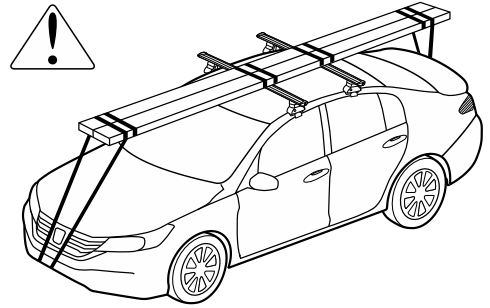
Do not exceed vehicle carrying limits see owners manual or ROLA's limits- whichever is lower. This is the weight of your carried cargo plus the weight of the cross bars.

- Use only the ROLA recommend Rail kits and Fit Kits for your specific make, model and model year.
- To avoid vehicle paint damage, always insure the vehicle doors are open and straps fully extended down when installing the cross bars.
- Make sure all bolts, straps, locks are tightened and locked before every trip. Check all for signs of wear and replace as needed. Check loads periodically during trips.
- Remove your cross bars when not is use and before entering automatic car washes.
- Lower your driving speeds to less than posted speeds depending on road conditions, wind speeds and loads being carried.



⚠ WARNING

- All long loads such as (but not limited to) Canoes, Kayaks, Sailboards, Paddle Boards and Construction materials must be tied down to the front and rear bumpers or tow hooks. All loads must be secured with non-stretch straps.
- Cross Bars are not for off road use, use on trailers or towed vehicles.
- Be aware of the carried load width and height as these can affect car handling, parking garage use or other vehicle height restrictions. Users are responsible for understanding and obeying government laws where they drive.
- Do NOT use ROLA cross bars and accessories for purposes other than what they are intended for or exceeding stated load limits. Failure to do so will void all warranties.
- All ROLA locks should be turned and lubricated periodically. Locks are intended to deter theft but are not theft proof, please remove valuable gear if left unattended. Place a spare key in the glovebox or some secure area.
- Check and replace worn out or defective parts.
- The load carrier should always be cleaned and maintained, especially in the winter.
- Screws, nuts and locks (if fitted) should be lubricated at regular intervals.
- When not in use, the product should be removed from the vehicle.
- When the product is removed from the vehicle, all loose parts should be stored safely.
- Road speed should always be adjusted to suit the load being carried and the current driving conditions such as road type and quality, wind conditions, traffic intensity and applicable speed limits.
- Note that the vehicle's total height increases when upright loads are carried.
- The vehicle's driving characteristics and braking behavior change and it's vulnerability to side winds increases when a load is carried on the roof.
- Products fitted with a lock should always be locked during transport.

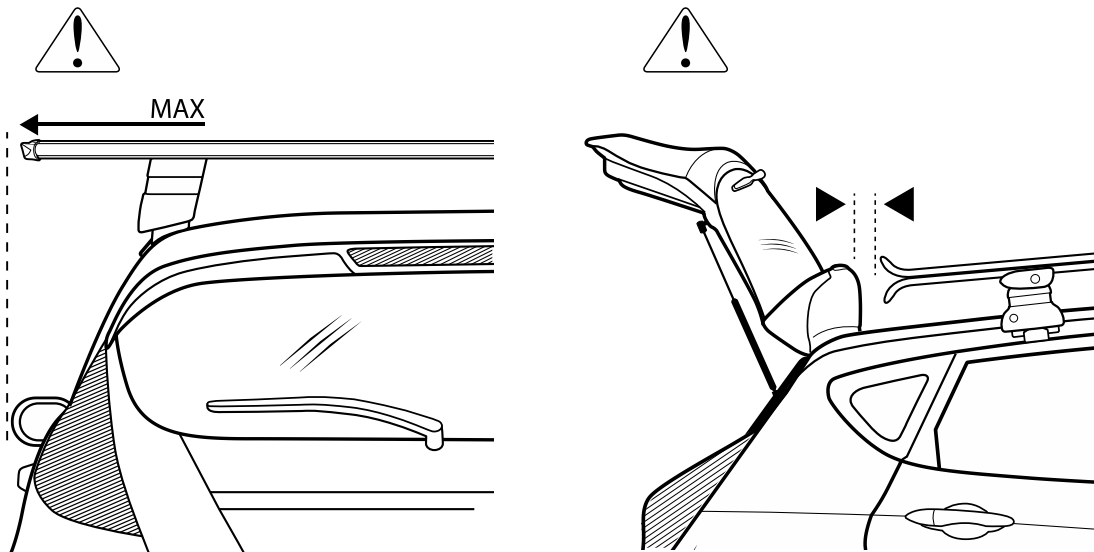


NOTICE: Your cross bars will not prevent property damage that may result from improper loading, securing, or driving.



PRIOR TO ASSEMBLY

- Check that all required parts are present before assembly by checking all the assembly instructions.
- Check that the vehicle's roof surface and product parts are clean.
- Check and follow the proper assembly sequence steps.
- Check to use the proper defined distance between cross bars. If not defined use a minimum of 27.5" or 700mm, when carrying long loads the cross bars should not be less than 23.5" or 600mm
- Check the cross bar is firmly attached on every use. Push and tug the bars and attaching straps, if any movement is noted secure the unit more firmly. Test this regularly.
- Some sunroofs cannot be opened when cross bars are installed.
- Some radio antenna's may be required to be removed with cross bars installed.
- No product modifications are allowed- this will void all warranties.
- Check that the maximum load is not exceeded. Use the ROLA load limit or the vehicle's load limit- which ever is lower. Max. roof load = Cross bar weight + Accessory carrier + Load carried.
- Check the loading does not exceed the carrier's width and loads a spread evenly and to the lowest point possible.
- Surfboards should be loaded on top of each other not side by side and all long loads secured to the vehicle both front and rear.
- Ski and snowboards should be carried with the tips facing rearwards.
- Cross bars should not extend past sideview mirrors.
- When carrying longer gear on cross bars, make sure there is sufficient room to open rear hatch.

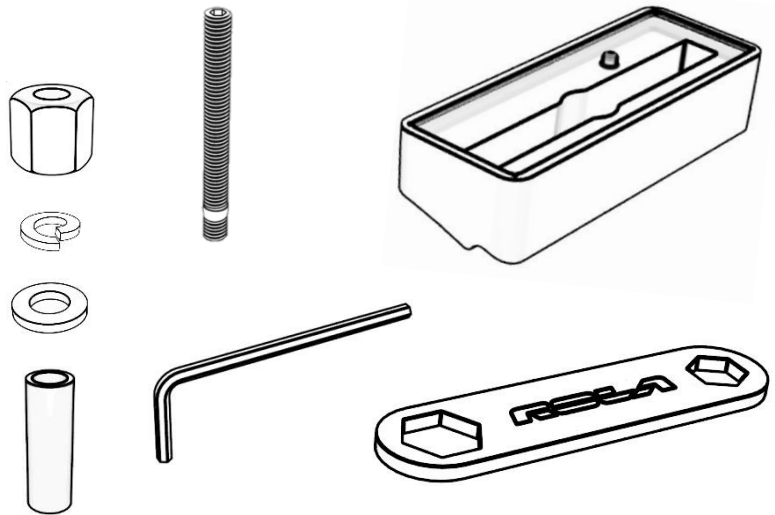


INSTALLATION INSTRUCTIONS

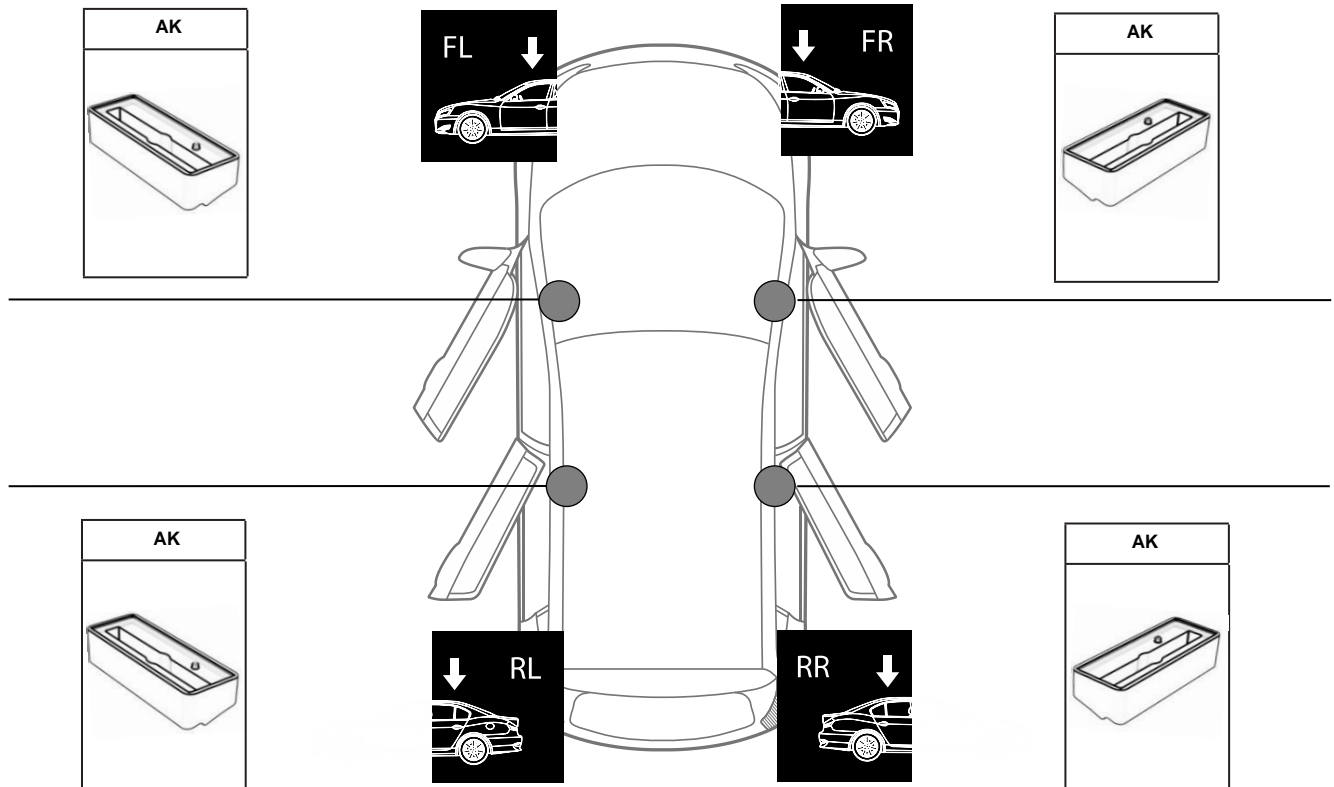
NOTE: Use this instruction guide and End Support Instructions to set up your ROLA cross bars.

PARTS LIST

Description	Qty
M6 Allen head set screw	4
M6 Nut	4
M6 Split Washer	4
M6 Flat Washer	4
Spacer Tube	4
M4 Allen Wrench	1
ROLA wrench	1
Gasket	4



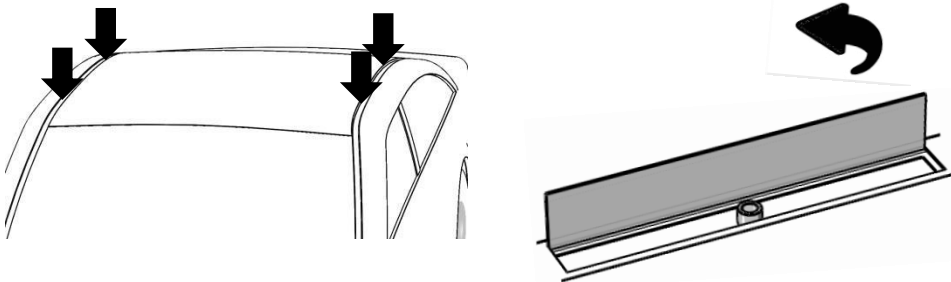
Apply positioning stickers as shown in the End Support Instructions.



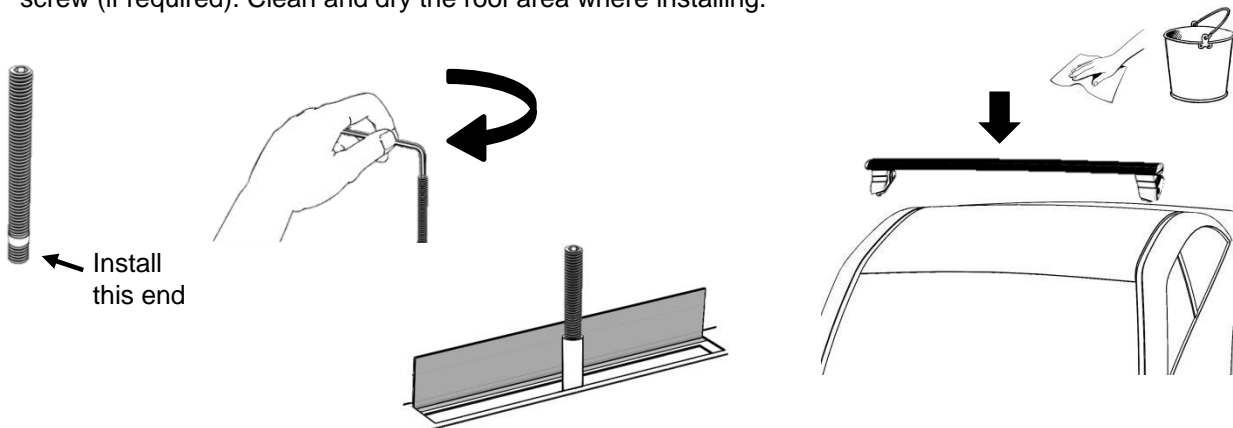
INSTALLATION INSTRUCTIONS

BMW -

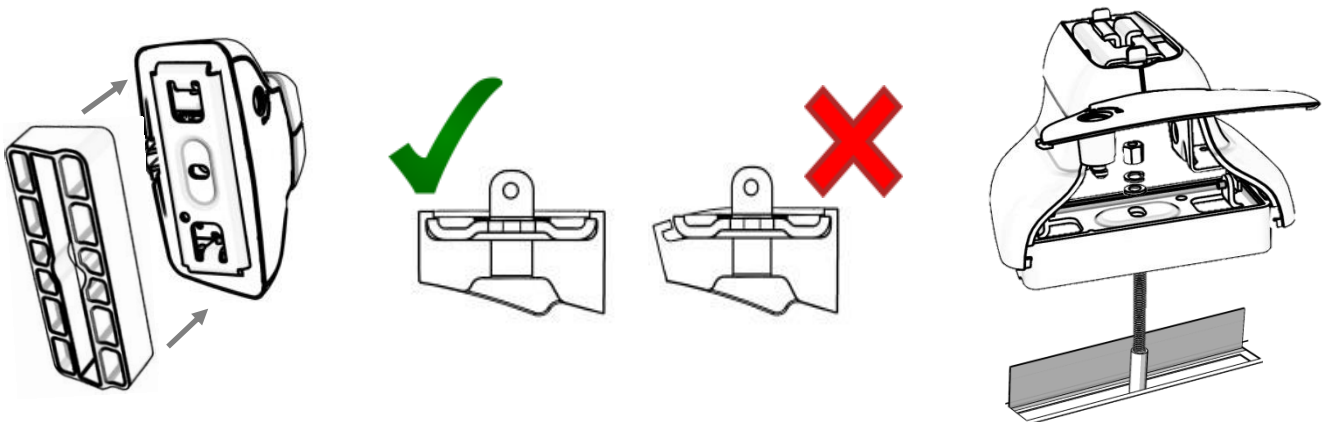
1. Locate and open the vehicle's fixed point access covers.



2. Install the fixed point set screws. Tighten to 2Nm (hand tight). Apply the spacer tube over the set screw (if required). Clean and dry the roof area where installing.



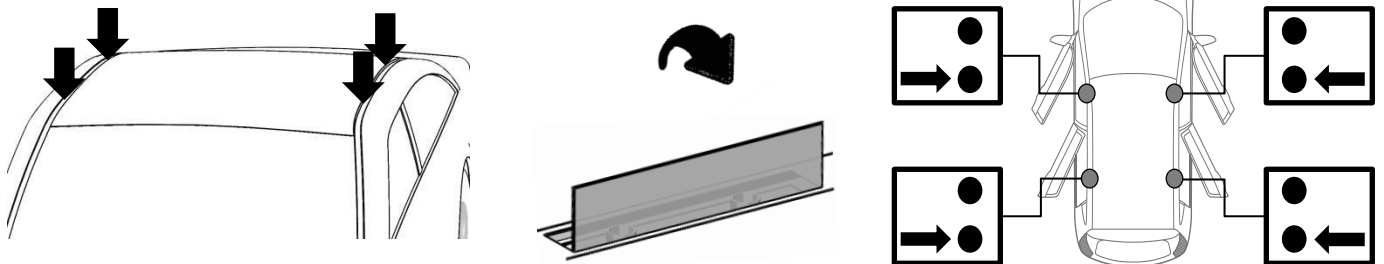
3. Install the Gasket Pads onto the cross bar-FPE end supports at the indicated positions. Install the cross bars onto the vehicle as directed in the FPE end support instructions.



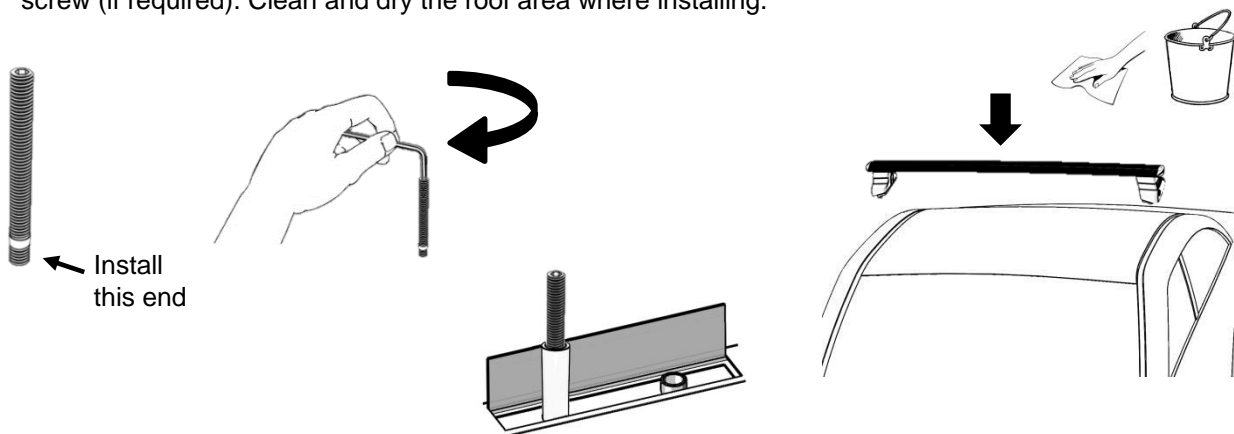
INSTALLATION INSTRUCTIONS

SUBARU -

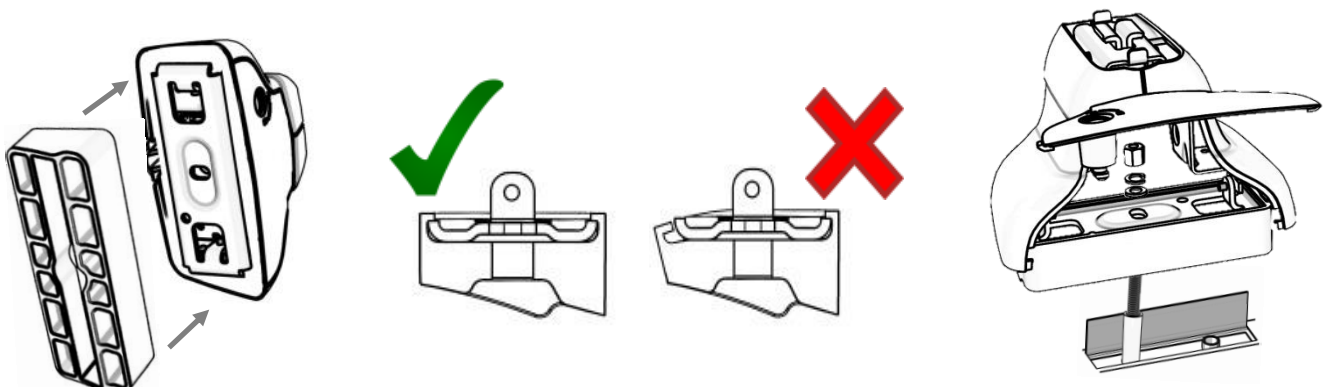
1. Locate and open the vehicle's fixed point access covers.



2. Install the fixed point set screws. Tighten to 2Nm (hand tight). Apply the spacer tube over the set screw (if required). Clean and dry the roof area where installing.

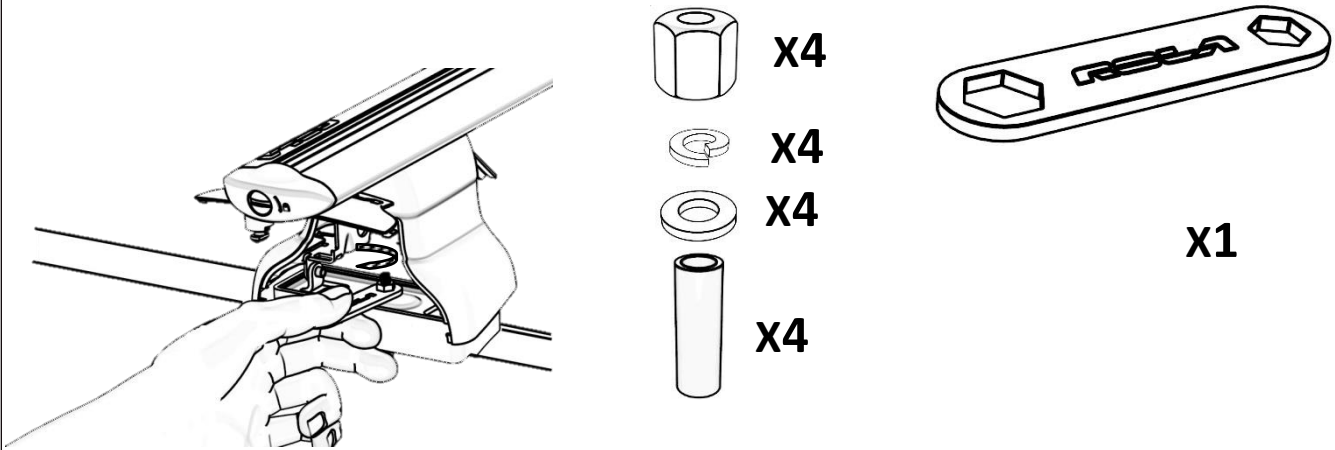


3. Install the Gasket Pads onto the cross bar-FPE end supports at the indicated positions. Install the cross bars onto the vehicle as directed in the FPE end support instructions.

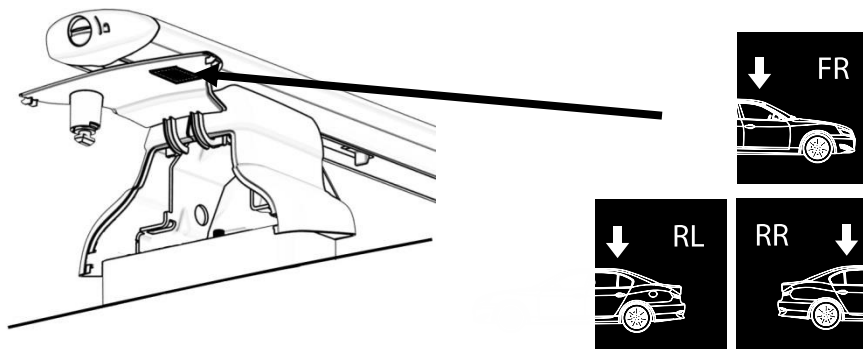


INSTALLATION INSTRUCTIONS

4. Apply the flat washer and split washer over the set screws and thread the nuts onto the set screws. Tighten nuts to 3Nm (firm hand tightened) using ROLA wrench or M10 open end wrench. Tighten the end support cam levers.



5. Apply the proper position labels to the FPE end support inner cover.



NOTE:
Store any vehicle fixed point access covers and wrenches in safe place for later use.