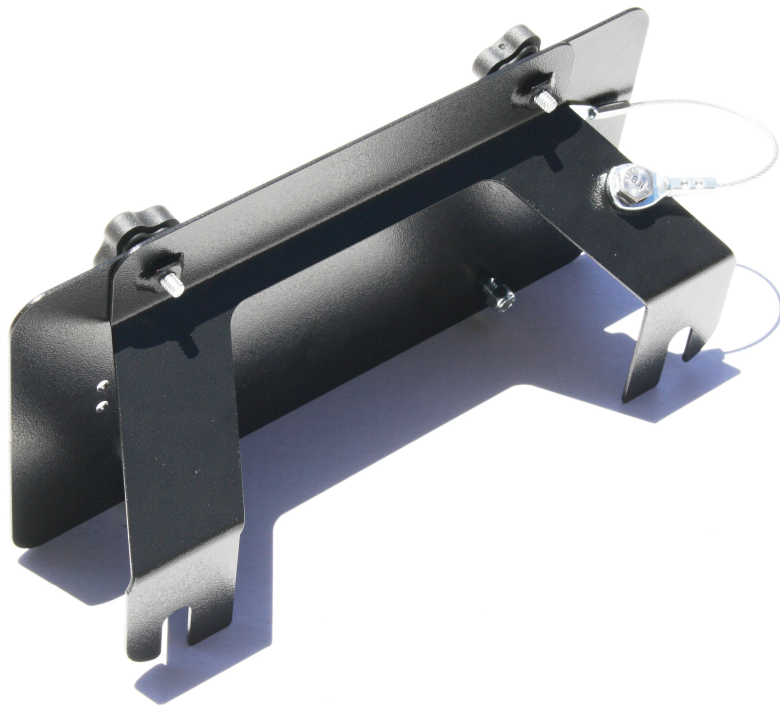




**ROCK HARD 4X4 HAWSE FAIRLEAD
LICENSE PLATE MOUNT
PART #: RH-4004
Installation Manual**



Thank you for your purchase! Please read all instructions carefully prior to beginning installation of your Rock Hard 4x4 product.

PACKING LIST:

- 1 - LICENSE PLATE MOUNTING BRACKET**
- 1 - LICENSE PLATE BACKING PLATE**
- 2 - RUBBERIZED THUMB SCREWS**
- 2 - 1/4-20" x 1/2" PHILLIPS HEAD SCREW**
- 2 - 1/4" NYLOCK NUTS**
- 1 - 3/8-16 X 1" HEX BOLT**
- 1 - 3/8 NYLOCK NUT**

REQUIRED TOOLS:

WRENCHES FOR REMOVING EXISTING FAIRLEAD MOUNTING BOLTS TO BUMPER, IF APPLICABLE, VARIES BY FAIRLEAD BRAND

**7/16 WRENCH OR SOCKET
9/16 WRENCH OR SOCKET
PHILLIPS HEAD SCREWDRIVER**

Thank you for your purchase! Whether you bought this Rock Hard 4x4 product from one of our fantastic dealers or our factory direct team, we thank you for your business.

Rock Hard 4x4 is a family owned and operated business. We are headquartered in Saint Paul, Nebraska where we design, fabricate, and produce every single one of our products. Every single part we manufacture is 100% Made in the USA and exclusively in house by the Rock Hard 4x4 team.

We outsource zero processes.

To you, that means the product you are installing is the highest quality and longest lasting component on the market.

To us, that means you've selected a part we've spent years developing. Each Rock Hard 4x4 part has gone through more research and development and evolution than most people realize. While our parts may have the same striking look year after year, subtle revisions and refinements we implement maintain their status as the most durable and easy to install on the market.

We invite you to send us your feedback! Please email, call, write, or catch us on an off road trail near you to share your tales, share comments, and ask questions.

1. Remove or loosen existing fairlead mounting hardware. Wrench size varies as different fairlead brands use different hardware for their applicable fairleads.
2. Slip license plate mounting bracket (bent plate) between face of bumper and backside of fairlead.
3. Re-tighten fairlead mounting hardware.
4. Install cable lanyard to license plate mounting bracket arm through existing hole using 3/8" bolt and nylock nut. A washer is not required.
5. Using Phillips head screwdriver and wrench, install license plate to license plate backing plate on BOTTOM two holes.
6. Install 2 thumb screws through license plate and backing plate into license plate mounting bracket on TOP two holes.