

# Installation Instructions

## PART NUMBERS: 76144, 84144, CQT76144

### ⚠ WARNING

**To prevent SERIOUS INJURY, DEATH or PROPERTY DAMAGE:**

- **ALWAYS read, understand and follow warnings and instructions for your hitch BEFORE installation. Keep for future reference.**
- **DO NOT cut, weld or modify this receiver.**
- **CHECK all fasteners are tight and your hitch is securely mounted to your vehicle periodically.**
- **ALWAYS read, understand and follow all warnings and instructions for your vehicle and for other accessories you will use with your hitch BEFORE use.**
- **LOAD the trailer heavier in front.**
- **DO NOT exceed lower of towing vehicle manufacturer’s rating or:**

Hitch Type	Max Gross Trailer Weight	Max Tongue Weight
Weight Carrying	4500 lb. (2043 kg)	675 lb. (306 kg)
Weight Distributing	N/A	N/A

- **ALWAYS wear your seatbelt.**
- **SLOW DOWN when towing, NEVER exceed any posted speed limit.**
- **If EXCESS SWAY occurs, take your foot off the gas pedal and hold the steering wheel as steady as possible. DO NOT apply your brakes and DO NOT speed up.**

### LIMITED LIFETIME WARRANTY

1. **Limited Lifetime Warranty (“Warranty”).** Horizon Global (“We”, “Us” or “Our”) warrants to the original consumer purchaser only (“You” or “Your”) that the product will be free from material defects in both material and workmanship, ordinary wear and tear excepted. The Warranty is valid only if (a) the products are returned to Us for inspection and testing; (b) Our inspection discloses to Our satisfaction that any alleged nonconformance are material and have not been caused by misuse, neglect, wear and tear, improper installation, unsuitable storage, improper repair, alteration, or accident; and (c) the products were installed, maintained and used in accordance with Our instructions. **THE WARRANTY IS MADE IN LIEU OF ALL OTHER WARRANTIES, EXPRESS OR IMPLIED (OTHER THAN THE WARRANTY OF TITLE AS PROVIDED BY THE UNIFORM COMMERCIAL CODE IN EFFECT IN MICHIGAN), INCLUDING WITHOUT LIMITATION, ANY WARRANTIES OF MERCHANTABILITY OR FITNESS FOR A PARTICULAR PURPOSE, SAID WARRANTIES BEING EXPRESSLY DISCLAIMED.**
2. **Obligations of Purchaser.** Any returned product that is replaced by Us becomes our property. You may be responsible for return shipping costs. Please retain your purchase receipt to verify date of purchase and that You are the original consumer purchaser. The product and the purchase receipt must be provided to Us in order to process Your Warranty claim.
3. **Exclusive Remedy.** Product replacement is Your sole and exclusive remedy under this Warranty. We shall not be liable for service or labor charges incurred in removing or replacing a product. **IN NO EVENT WILL WE BE RESPONSIBLE FOR ANY INDIRECT, SPECIAL, CONSEQUENTIAL OR PUNITIVE DAMAGES.**
4. **Assumption of Risk.** You acknowledge and agree that any use of the product for any purpose other than the specified use(s) stated in the product instructions is at Your own risk.
5. **Governing Law.** This Warranty gives You specific legal rights, and You also may have other rights which vary from state to state. This Warranty is governed by the laws of the State of Michigan, without regard to rules pertaining to conflicts of law. The state courts located in Oakland County, Michigan shall have exclusive jurisdiction for any disputes relating to this Warranty.

# Installation Instructions

## PART NUMBERS: 76144, 84144, CQT76144

### Applications:

Years	Make	Models
2017-Current*	Jeep	Compass

\*Visit our website for the most up to date information regarding application years and trim levels.

### Installation Time: **40 min**

The time listed above is the average time for professional installers. If you do not feel comfortable performing this installation on your own or are in need of assistance, please contact a professional installer.



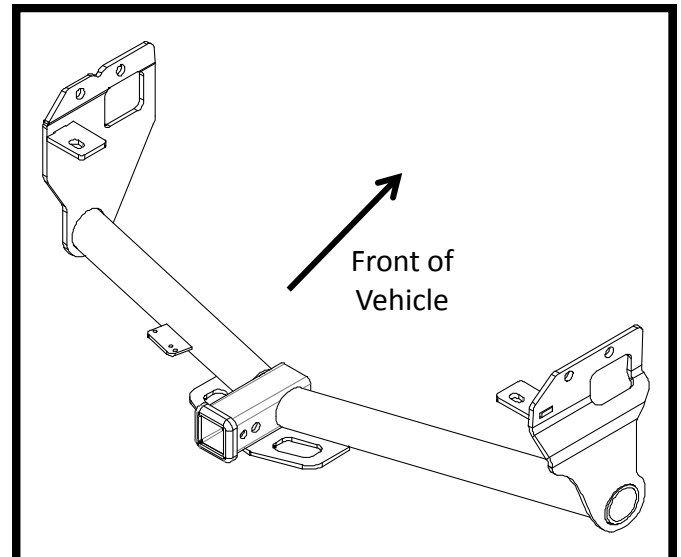
**Representative Vehicle Photo**

### Equipment Required:

Safety Glasses	Ratchet	8 mm 10 mm 13 mm 3/4 " Sockets	6" Socket Extension	Torque Wrench
Die Grinder	Utility Knife	Bungee Cord		

**DO NOT EXCEED LOWER OF TOWING VEHICLE  
MANUFACTURER'S RATING OR:**

Hitch Type	Max Gross Trailer Weight	Max Tongue Weight
Weight Carrying	4500 lb. (2043 kg)	675 lb. (306 kg)
Weight Distributing	N/A	N/A



**Hitch Illustration**








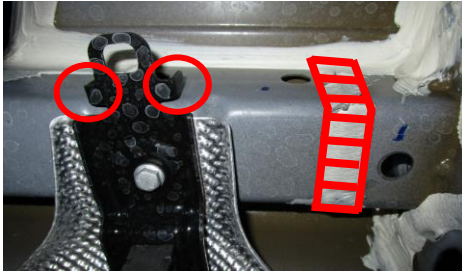
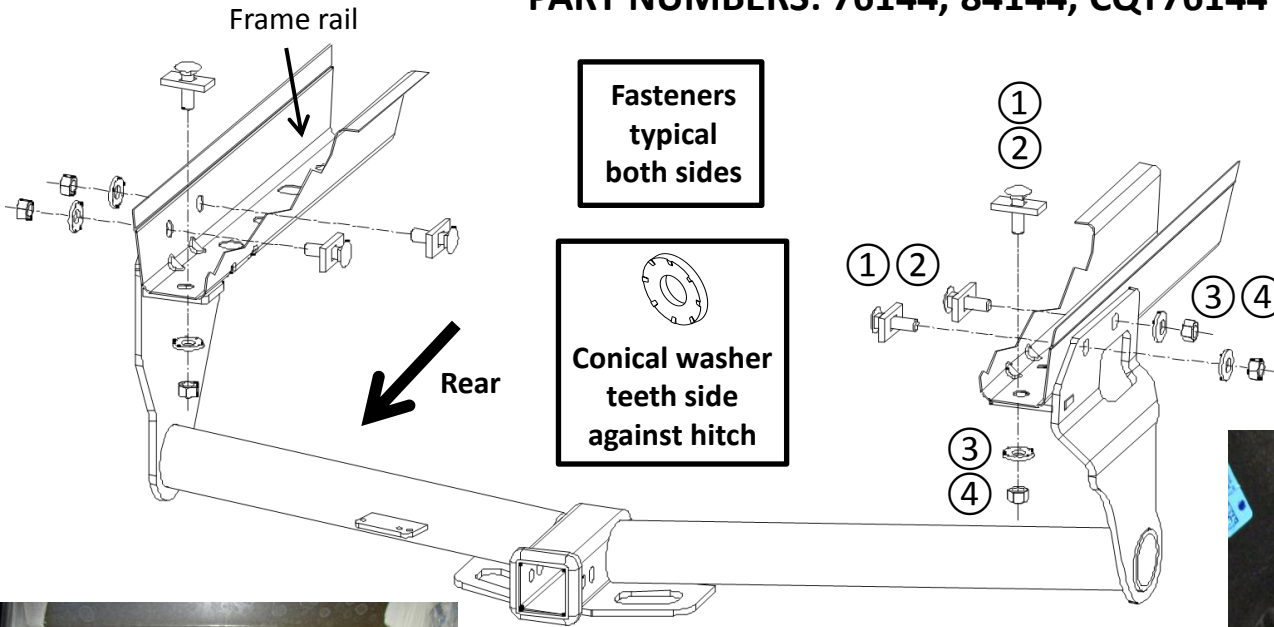
Always wear SAFETY GLASSES when installing hitch

# Installation Instructions

## PART NUMBERS: 76144, 84144, CQT76144

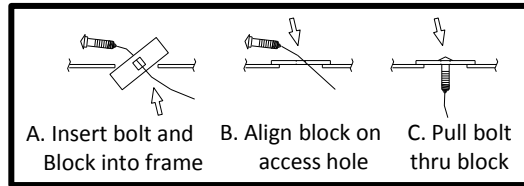
### Fastener Kit: 76144F

①	Qty. (6)	Carriage bolt 1/2"-13 x 1.75 GR5	
②	Qty. (6)	Spacer .250 x 1.0 x 2.0 Part #: 5121	
③	Qty. (6)	Conical washer 1/2" Part #: 01292008	
④	Qty. (6)	Hex nut 1/2-13 GR5	
⑤	Qty. (6)	Pull wire 1/2-13 Part #: 5482	

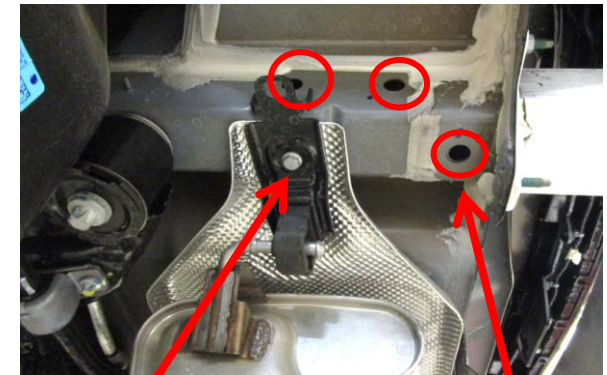


**Figure 3**

**Figure 1**



**Figure 4**



Exhaust hanger bolt

**Figure 2**

Hole enlargement location

- Loosen wheel well liners** - use 8 mm and 10 mm socket to remove (3) screws and (1) plastic flange nut from wheel well liners each side.
- Enlarge access hole** – peel off (3) plastic covers from holes on the frame rails each side, see **Figure 2**. Locate the rearmost hole and use die grinder to enlarge the hole size big enough to feed the bolt and spacer each side, see **Figure 2**. **NOTE:** for the models with factory tow hook, use 21 mm socket to remove M14 bolts in these locations and save them for reinstallation
- Lower exhaust hanger and caulk removal** – use 13 mm socket to remove (1) bolt from exhaust hanger each side and lower the muffler temporarily, see **Figure 2**. Use a support or bungee cord to keep muffler from getting damaged. Use utility knife to remove caulk near rear mounting holes, see **Figure 3**. Bend down or cut off the legs of exhaust hanger bracket both sides for easier installation, see **Figure 3**.
- Hitch installation** - fishwire the carriage bolts ① and spacers ② into frame through rearmost enlarged hole and leave pull wires attached, see **Figure 4**. Raise hitch into position and carefully slide it over exhaust hanger (passenger side first). Feed pull wires previously installed through bracket holes. Remove pull wires and loosely install conical washer ③ and hex nut ④ to the hitch, see **Figure 1**. **NOTE:** for the models with factory tow hook, loosely secure the factory M14 bolts to the hitch attachment holes.
- Tighten all 1/2" fasteners with torque wrench to 75 Lb.-Ft. (102 N\*M) and all M14 fasteners to 115 Lb.-Ft. (156 N\*M).**
- Reinstall exhaust hangers and all fasteners removed from wheel well liners in Step 1.



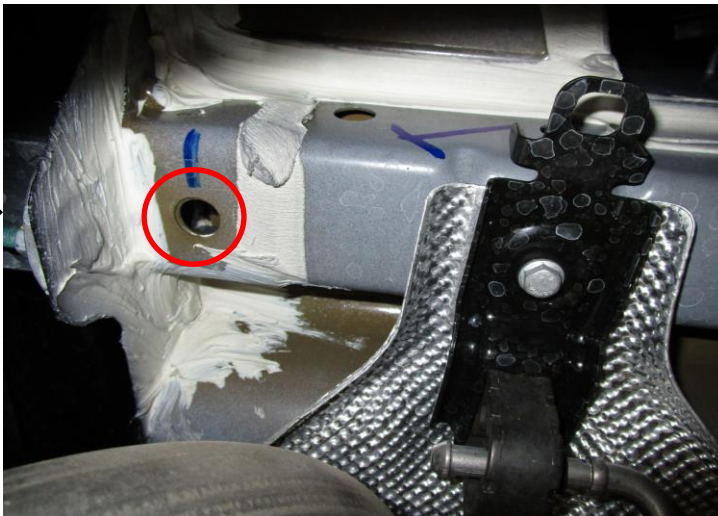
Proper torque is needed to keep the hitch secure to the vehicle when towing.

Note: check hitch frequently, making sure all fasteners and ball are properly tightened. If hitch is removed, plug all holes in trunk pan or other body panels to prevent entry of water and exhaust fumes. A hitch or ball which has been damaged should be removed and replaced. Observe safety precautions when working beneath a vehicle and wear eye protection. Do not cut access or attachment holes with a torch. This product complies with safety specifications and requirements for connecting devices and towing systems of the state of New York.

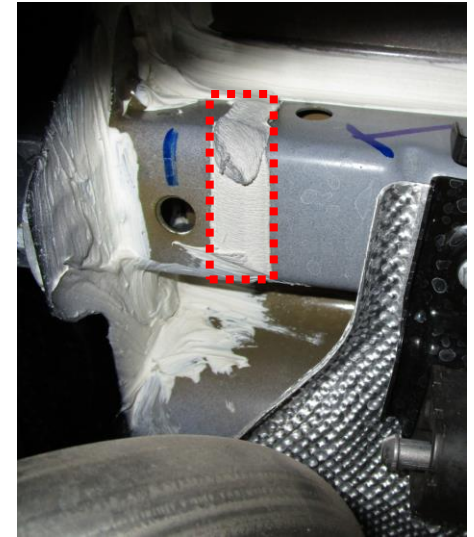
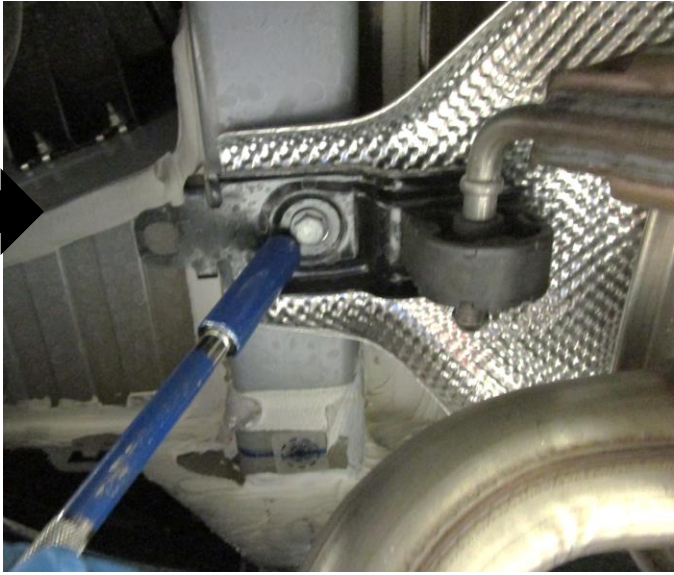
1. Loosen wheel well liners - use 8 mm and 10 mm socket to remove (3) screws and (1) plastic flange nut from wheel well liners each side.



2. Enlarge access hole – peel off (3) plastic covers from holes on the frame rails each side, see [Figure 2](#). Locate the rearmost hole and use die grinder to enlarge the hole size big enough to feed the bolt and spacer each side, see [Figure 2](#). NOTE: for the models with factory tow hook, use 21 mm socket to remove M14 bolts in these locations and save them for reinstallation



**3. Lower exhaust hanger and caulk removal** – use 13 mm socket to remove (1) bolt from exhaust hanger each side and lower the muffler temporarily, see **Figure 2**. Use a support or bungee cord to keep muffler from getting damaged. Use utility knife to remove caulk near rear mounting holes, see **Figure 3**. Bend down or cut off the legs of exhaust hanger bracket both sides for easier installation, see **Figure 3**.



**4. Hitch installation** - fishwire the carriage bolts ① and spacers ② into frame through rearmost enlarged hole and leave pull wires attached, see **Figure 4**. Raise hitch into position and carefully slide it over exhaust hanger (passenger side first). Feed pull wires previously installed through bracket holes. Remove pull wires and loosely install conical washer ③ and hex nut ④ to the hitch, see **Figure 1**. **NOTE:** for the models with factory tow hook, loosely secure the factory M14 bolts to the hitch attachment holes

**5. Tighten all 1/2" fasteners with torque wrench to 75 Lb.-Ft. (102 N\*M) and all M14 fasteners to 115 Lb.-Ft. (156 N\*M).**

6. Reinstall exhaust hanger and all fasteners removed from wheel well liners in Step 1.

**⚠ Proper torque is needed to keep the hitch secure to the vehicle when towing.**

