



PIPE TOOLS & VISES  
SINCE 1896

# Universal Pipe Cutter (UPC) Replacement Parts Booklet

## Table of Contents

| Drawing Number | Description                     |
|----------------|---------------------------------|
| U1             | UPC Front View                  |
| U2             | UPC Pneumatic Rear View         |
| U3             | UPC Hydraulic Rear View         |
| U4             | UPC Mainframe Assembly          |
| U5             | UPC Bladeguard Assembly         |
| U6             | UPC Blade & Arbor Details       |
| U7             | UPC Turnbuckle & Chain Assembly |
| U8             | UPC Connecting Frame Assembly   |
| U9             | UPC Motor Bracket Assembly      |
| U10            | UPC Hydraulic Motor Assembly    |
| U11            | UPC Pneumatic Motor Assembly    |

## How to use this booklet:

To locate a specific part, refer to drawings U1, U2 and U3 which contain assembled views of the UPC. Find the general area in which the part is located. Refer to the cross reference table on the bottom of the drawing. This table will indicate a detail drawing number for that general area. Refer to that drawing number for the nomenclature for the part. The exploded detail drawings are numbered U4 through U11. Further information can be obtained from Reed Manufacturing Company.

\*UPC Hydraulic models were discontinued at Reed in 2009. Some replacement parts are available.



PIPE TOOLS & VISES  
SINCE 1896

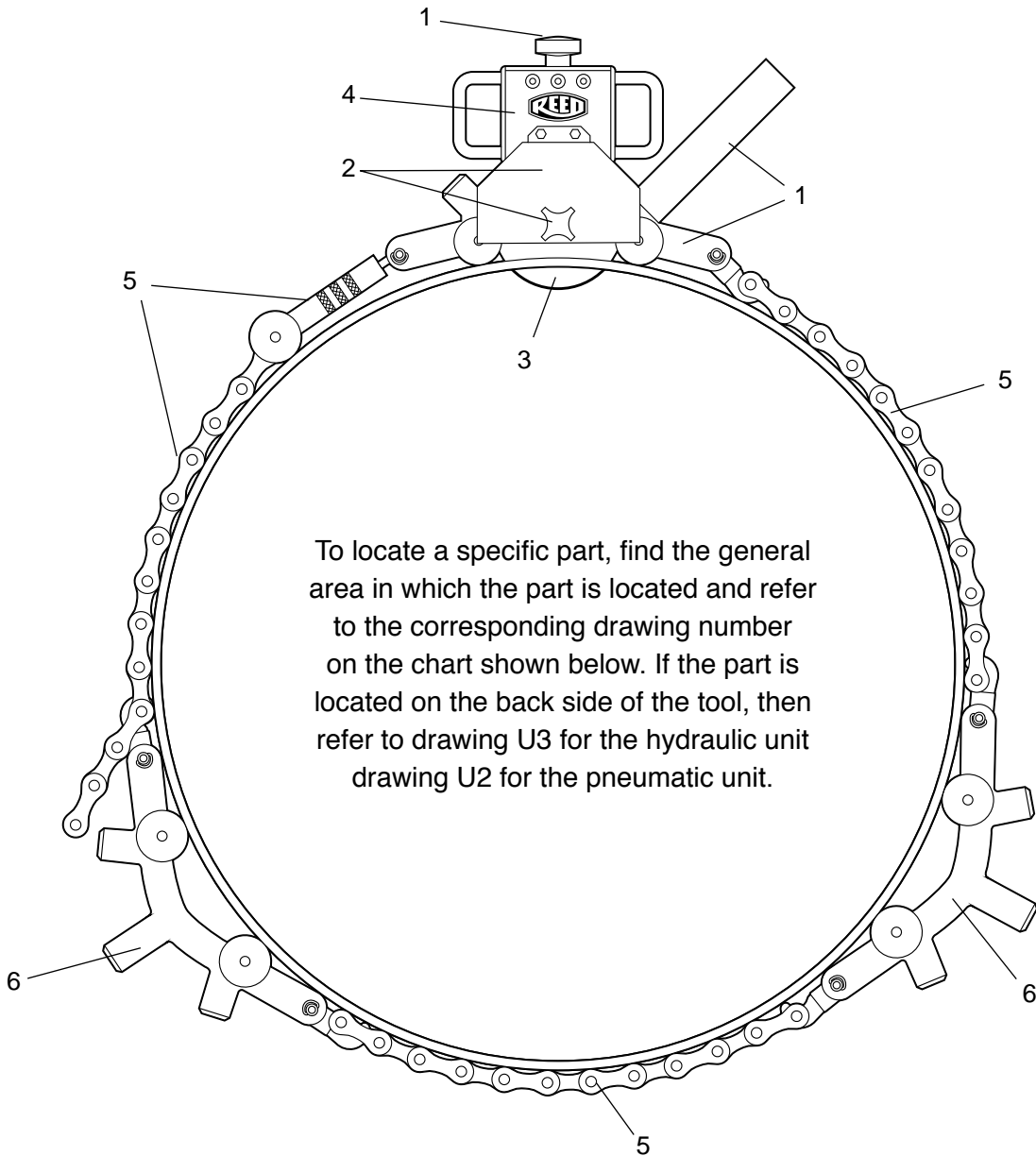
# Universal Pipe Cutter (Hydraulic & Pneumatic Models)

## Replacement Parts

### Front View

Drawing No.

**U1**



To locate a specific part, find the general area in which the part is located and refer to the corresponding drawing number on the chart shown below. If the part is located on the back side of the tool, then refer to drawing U3 for the hydraulic unit drawing U2 for the pneumatic unit.

| Ref. No. | For detailed parts explosion information see: |
|----------|---|
| 1        | Explosion Drawing U4                          |
| 2        | Explosion Drawing U5                          |
| 3        | Explosion Drawing U6                          |
| 4        | Explosion Drawing U9                          |
| 5        | Explosion Drawing U7                          |
| 6        | Explosion Drawing U8                          |



PIPE TOOLS & VISES  
SINCE 1896

# Universal Pipe Cutter (Pneumatic Only)

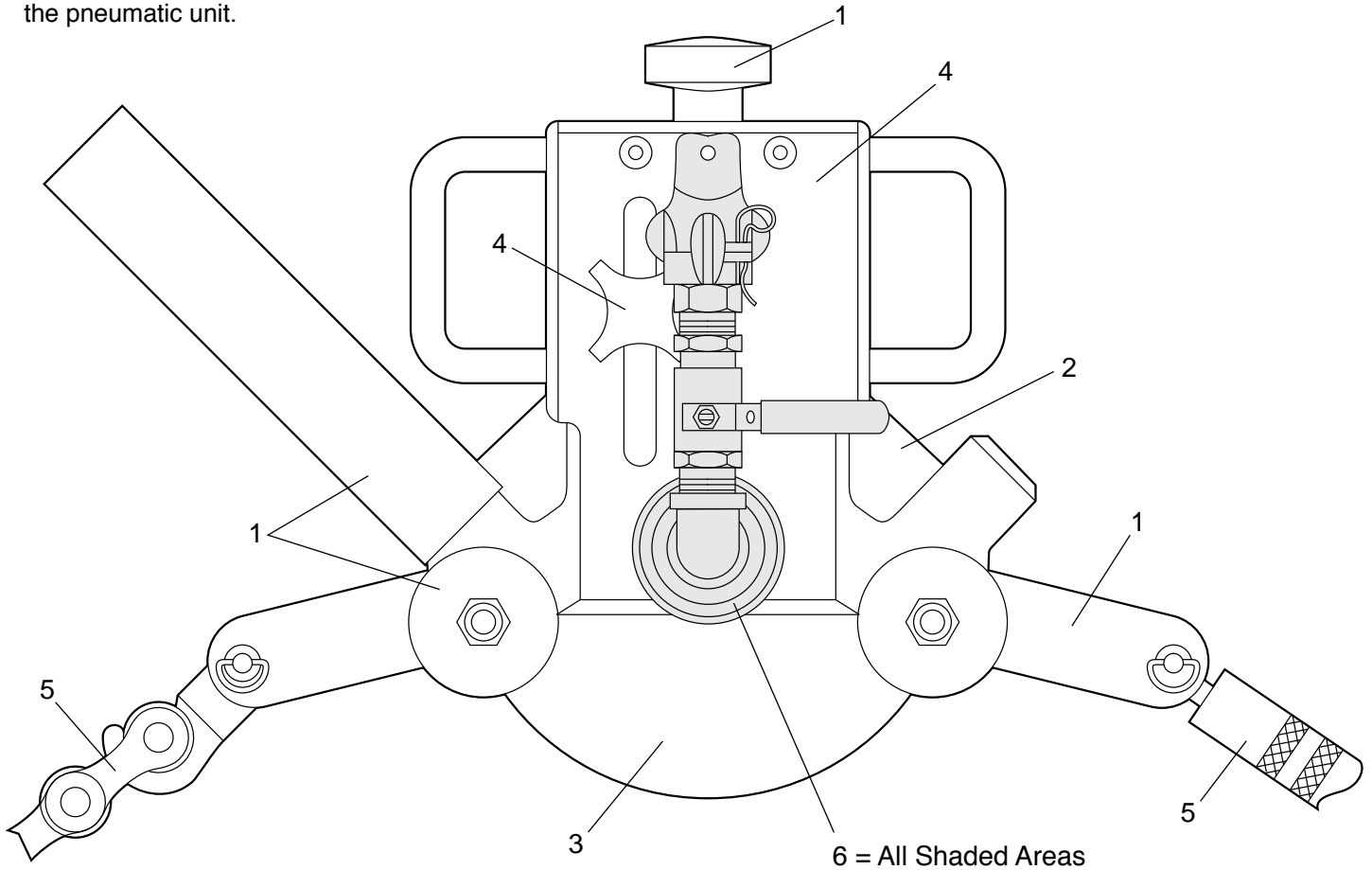
## Replacement Parts

Drawing No.

U2

To locate a specific part, find the general area in which the part is located and refer to the corresponding drawing number on the chart shown below. If the part is located on the front side of the tool, then refer to drawing U1 for both the hydraulic unit and the pneumatic unit.

### Rear View



| Ref. No. | For detailed parts explosion information see: |
|----------|---|
| 1        | Explosion Drawing U4                          |
| 2        | Explosion Drawing U5                          |
| 3        | Explosion Drawing U6                          |
| 4        | Explosion Drawing U9                          |
| 5        | Explosion Drawing U7                          |
| 6        | Explosion Drawing U11                         |



PIPE TOOLS & VISES  
SINCE 1896

# Universal Pipe Cutter (Hydraulic Only)

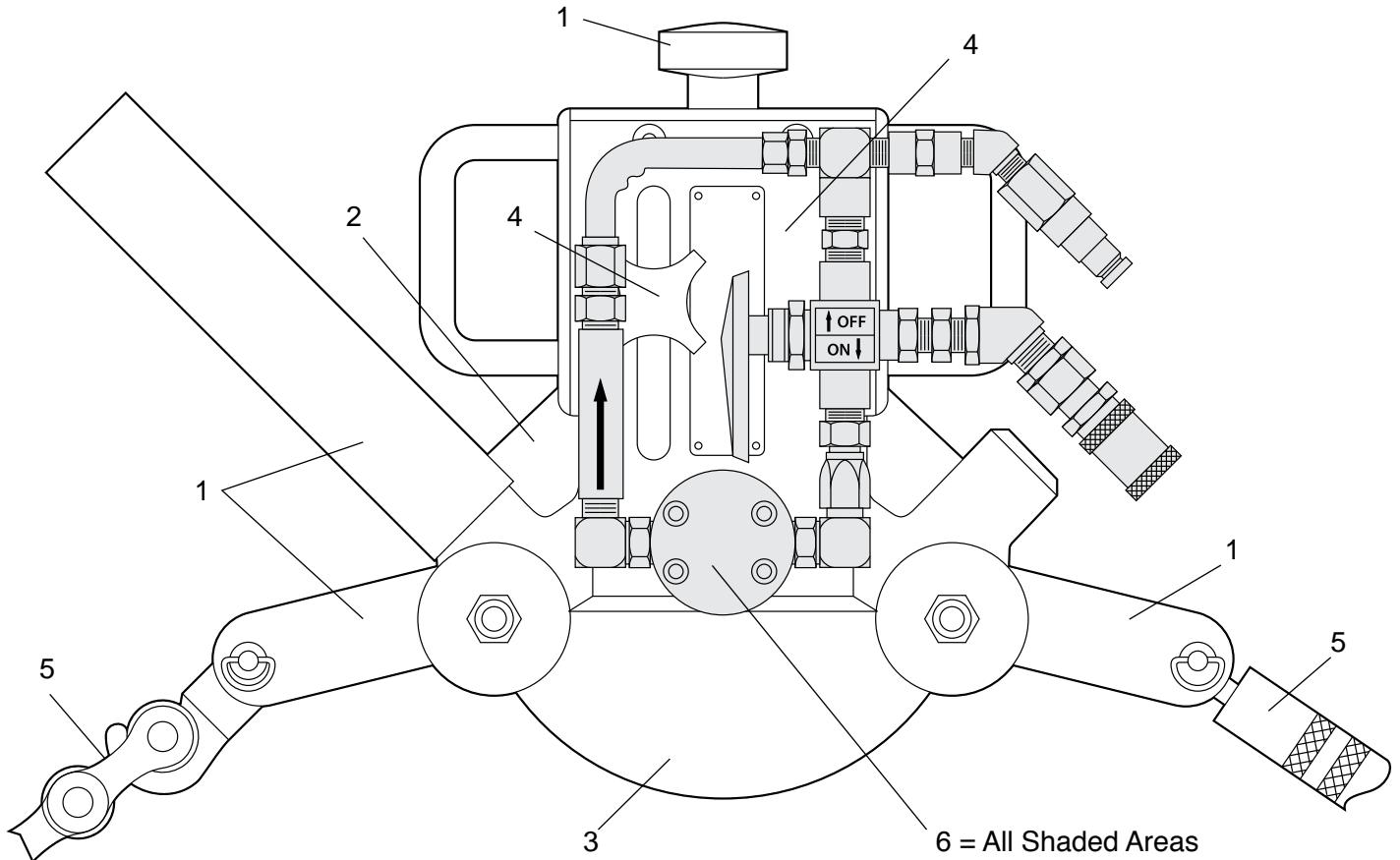
## Replacement Parts

Drawing No.

**U3**

To locate a specific part, find the general area in which the part is located and refer to the corresponding drawing number on the chart shown below. If the part is located on the front side of the tool, then refer to drawing U1 for both the hydraulic unit and the pneumatic unit.

### Rear View



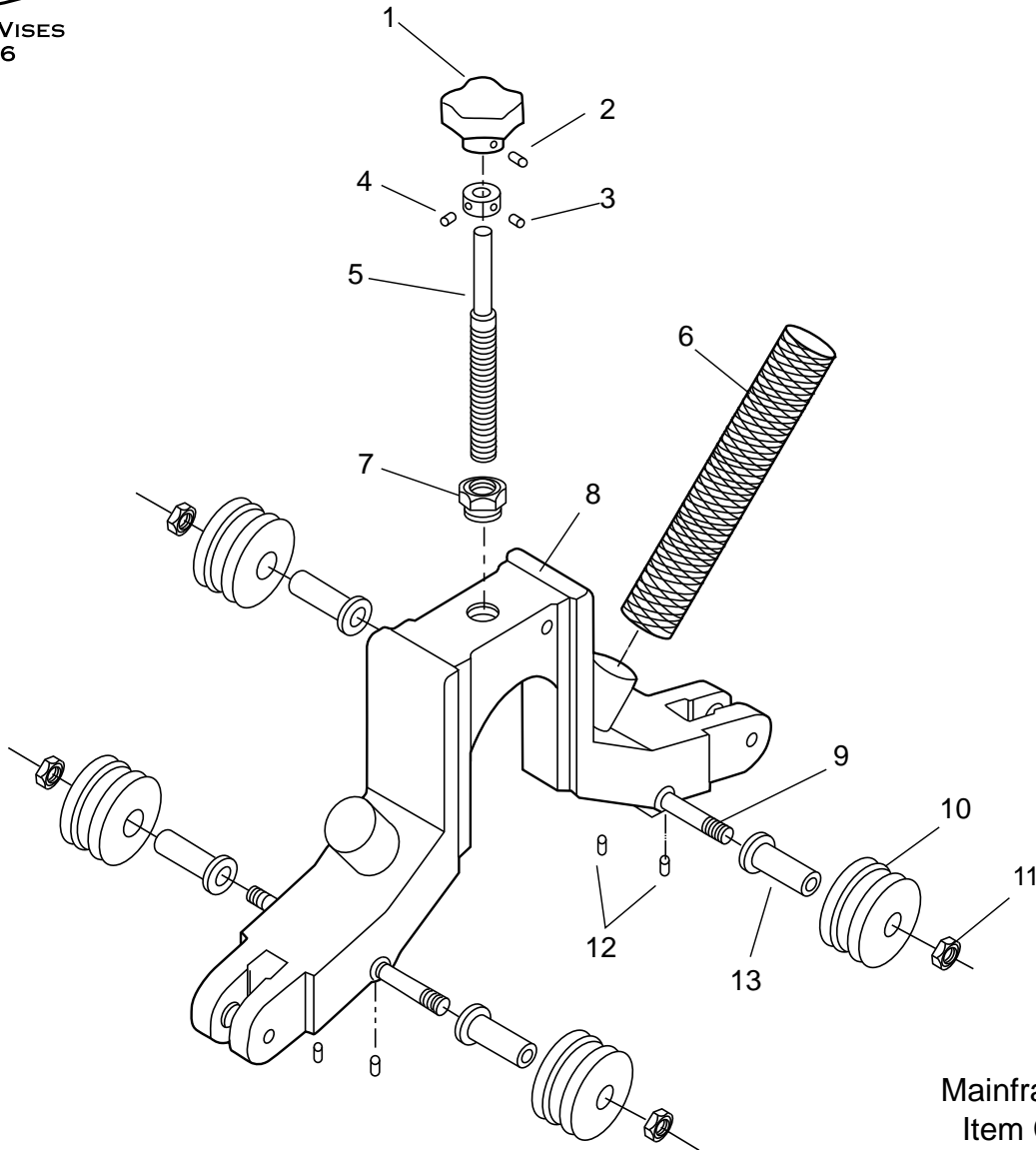
| Ref. No. | For detailed parts explosion information see: |
|----------|---|
| 1        | Explosion Drawing U4                          |
| 2        | Explosion Drawing U5                          |
| 3        | Explosion Drawing U6                          |
| 4        | Explosion Drawing U9                          |
| 5        | Explosion Drawing U7                          |
| 6        | Explosion Drawing U10                         |



PIPE TOOLS & VISES  
SINCE 1896

# Universal Pipe Cutter (Mainframe Assembly)

## Replacement Parts



Drawing No.

**U4**

Complete  
Mainframe Assembly  
Item Code #97067\*

### Parts List

| Ref. No. | Description     | Item Code | Qty |
|----------|-----------------|-----------|-----|
| 1        | Feed Knob       | 97551     | 1   |
| 2        | Set Screw       | 30087     | 1   |
| 3        | Collar          | 93140     | 1   |
| 4        | Set Screw       | 40083     | 2   |
| 5        | Feed Screw      | 97547     | 1   |
| 6        | Handle*         | 97582     | 1   |
| 7        | Bushing         | 97548     | 1   |
| 8        | Mainframe       | 97068     | 1   |
| 9        | Roller Pin      | 97542     | 2   |
| 10       | Roller          | 97541     | 4   |
| 11       | Flexloc Nut     | 97543     | 4   |
| 12       | Set Screw       | 97544     | 4   |
| 13       | Flanged Bearing | 97010     | 4   |

\* #97582 Handle not included with #97067.



PIPE TOOLS & VISES  
SINCE 1896

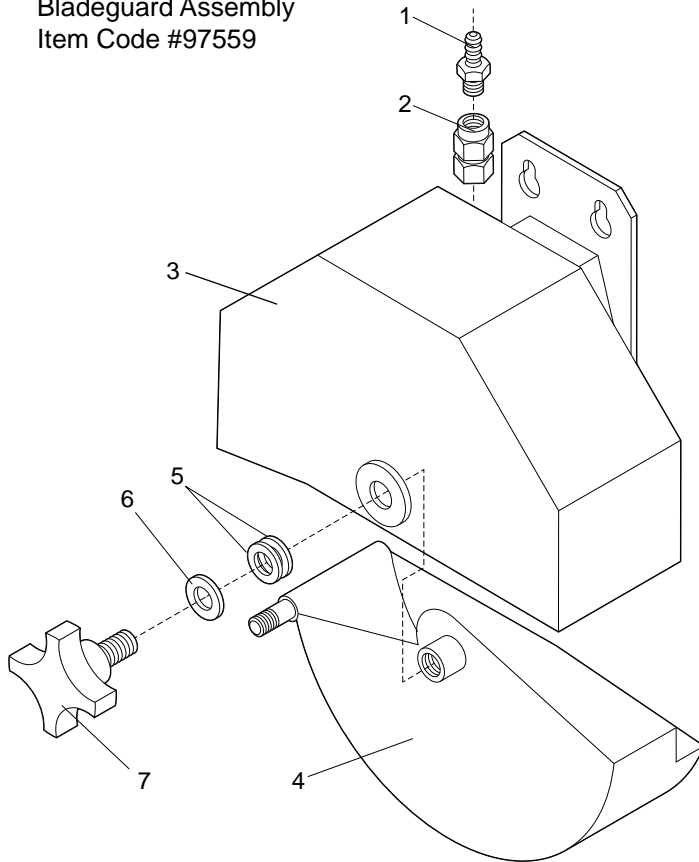
# Universal Pipe Cutter (Blade Guard Assembly)

## Replacement Parts

Drawing No.

**U5**

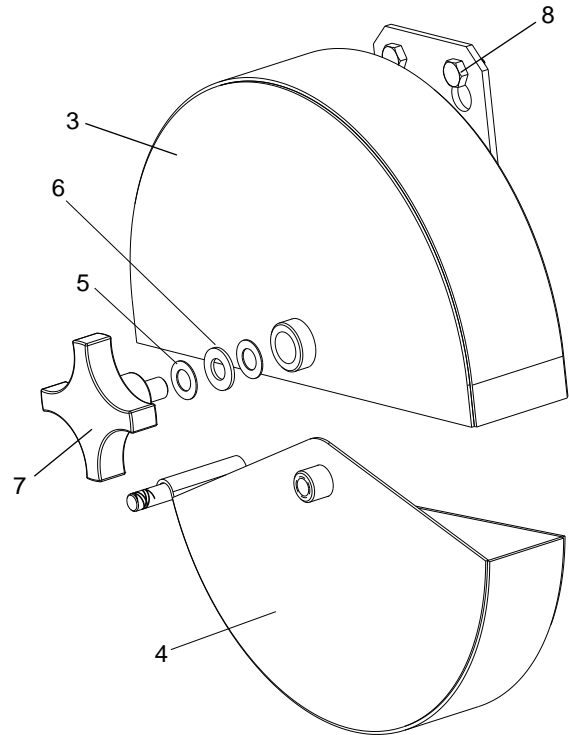
Complete  
Bladeguard Assembly  
Item Code #97559



UPC616, UPC636, and UPC648 Models.

### Parts List

| Ref. No. | Description       | Item Code | Qty |
|----------|-------------------|-----------|-----|
| 1        | Hose Barb         | 40026     | 1   |
| 2        | Female Connector  | 40167     | 1   |
| 3        | Blade Cover       | 97601     | 1   |
| 4        | Blade Guard       | 97600     | 1   |
| 5        | Belleville Washer | 97562     | 2   |
| 6        | Nylon Washer      | 97553     | 1   |
| 7        | Knob Assembly     | 97578     | 1   |



UPC836 and UPC848 Models.

### Parts List

| Ref. No. | Description       | Item Code | Qty |
|----------|-------------------|-----------|-----|
| 1        | Hose Barb         | 40026     | NA  |
| 2        | Female Connector  | 40167     | NA  |
| 3        | Blade Cover       | 97604     | 1   |
| 4        | Blade Cover       | 97603     | 1   |
| 5        | Belleville Washer | 97562     | 2   |
| 6        | Nylon Washer      | 97553     | 1   |
| 7        | Knob Assembly     | 97578     | 1   |
| 8        | Screw             | 30156     | 2   |



PIPE TOOLS & VISES  
SINCE 1896

# Universal Pipe Cutter (Blade & Arbor Assembly)

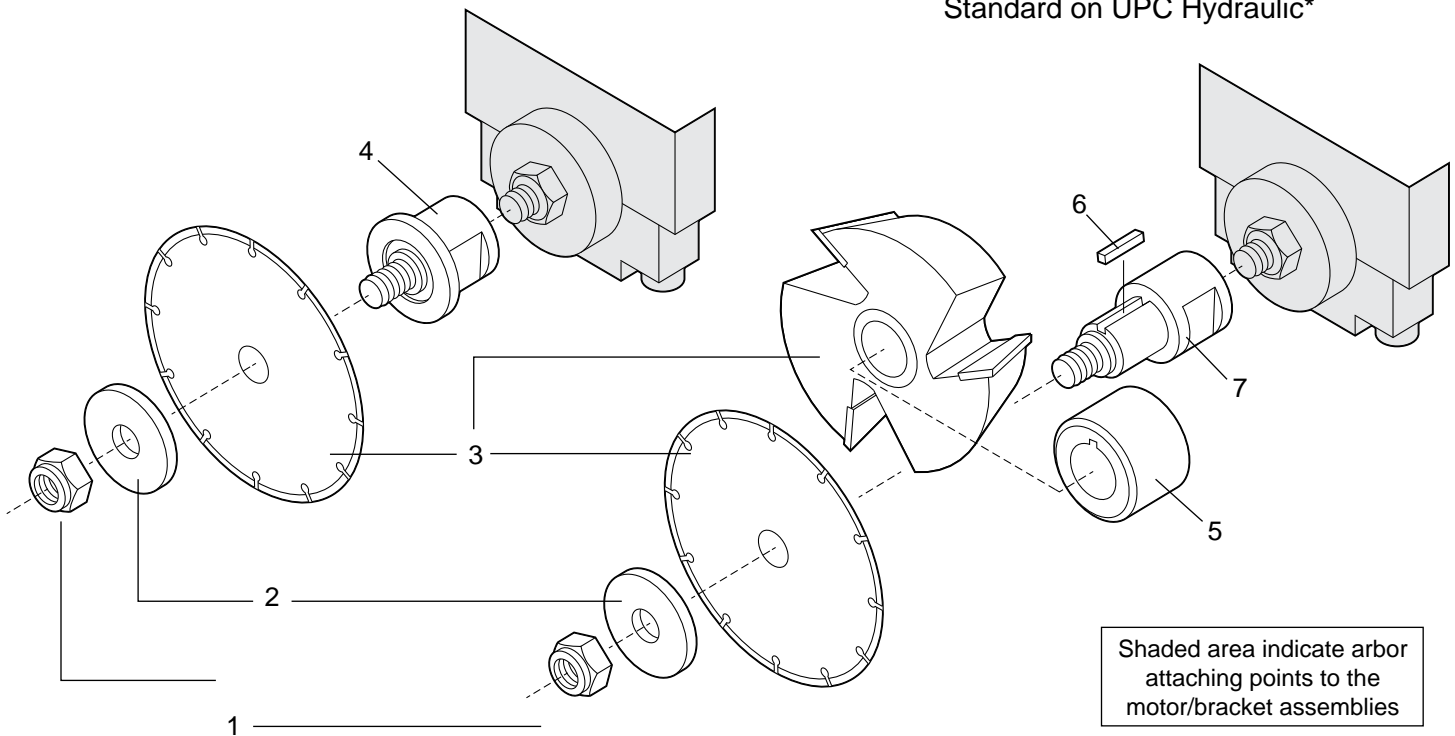
## Replacement Parts

Drawing No.

**U6**

### Short Arbor Assembly Standard on UPC Pneumatic

### Long Arbor Assembly Optional on UPC Pneumatic and Standard on UPC Hydraulic\*



## Parts List

| Ref. No. | Description                             | Item Code                            | Qty |
|----------|---|--------------------------------------|-----|
| 1        | Flexloc Nut                             | 97543                                | 1   |
| 2        | Flanged Washer                          | 97066                                | 1   |
| 3        | Blade                                   | See Blade Chart On Box Lid Or Online | 1   |
| 4        | Short Arbor (Standard On UPC Pneumatic) | 97617                                | 1   |
| 5        | Arbor Spacer                            | 97550                                | 1   |
| 6        | Arbor Key                               | 97070                                | 1   |
| 7        | Long Rod (Optional On UPC Pneumatic)    | 97561                                | 1   |

\*UPC Hydraulic models were discontinued at Reed in 2009. Most replacement parts are available.



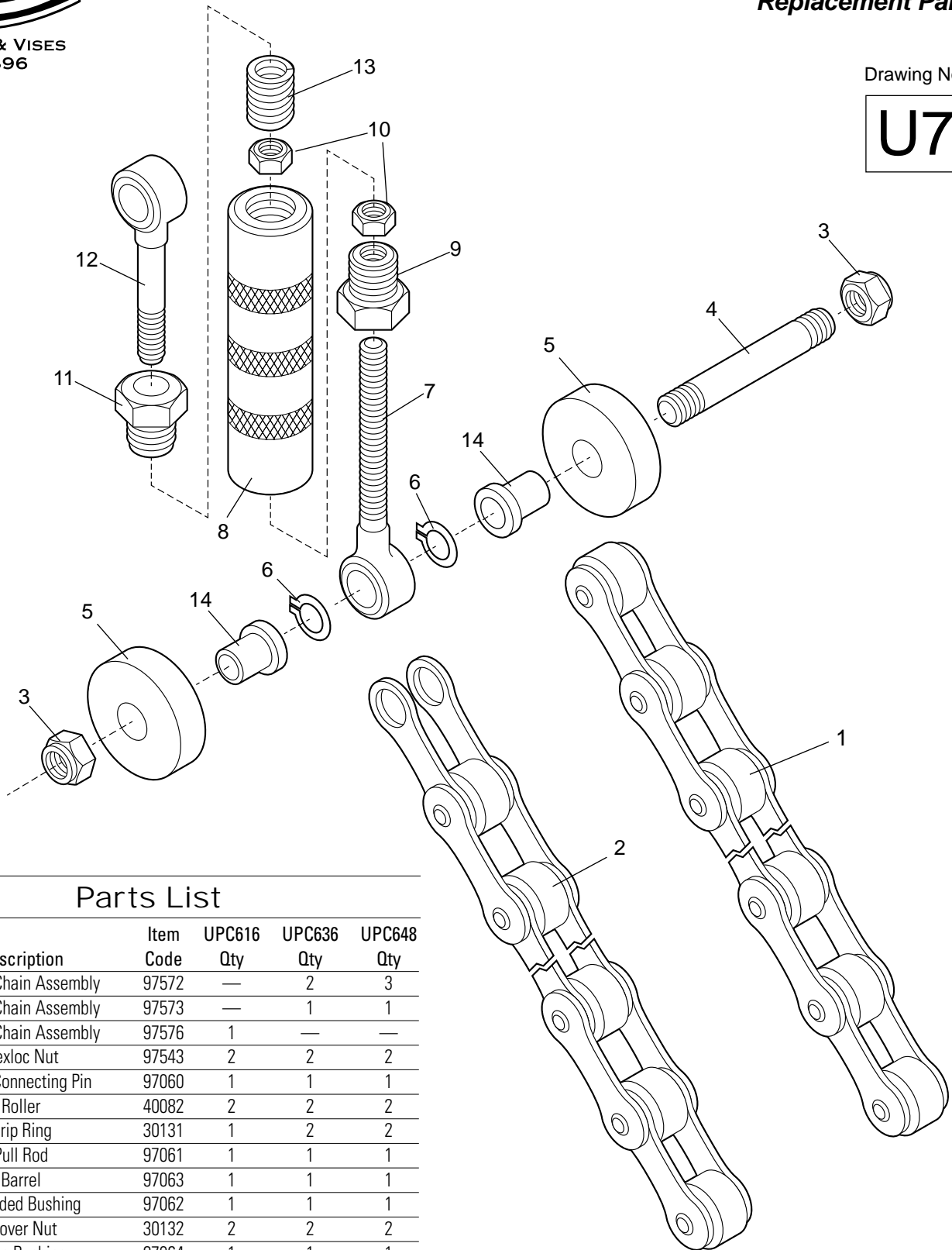
PIPE TOOLS & VISES  
SINCE 1896

# Universal Pipe Cutter (Turnbuckle & Chain Assembly)

## Replacement Parts

Drawing No.

**U7**



### Parts List

| Ref. No. | Description            | Item Code | UPC616 Qty | UPC636 Qty | UPC648 Qty |
|----------|------------------------|-----------|------------|------------|------------|
| 1        | 11 Link Chain Assembly | 97572     | —          | 2          | 3          |
| 2A       | 13 Link Chain Assembly | 97573     | —          | 1          | 1          |
| 2B       | 19 Link Chain Assembly | 97576     | 1          | —          | —          |
| 3        | Flexloc Nut            | 97543     | 2          | 2          | 2          |
| 4        | Chain Connecting Pin   | 97060     | 1          | 1          | 1          |
| 5        | Roller                 | 40082     | 2          | 2          | 2          |
| 6        | Grip Ring              | 30131     | 1          | 2          | 2          |
| 7        | Pull Rod               | 97061     | 1          | 1          | 1          |
| 8        | Barrel                 | 97063     | 1          | 1          | 1          |
| 9        | Threaded Bushing       | 97062     | 1          | 1          | 1          |
| 10       | Stover Nut             | 30132     | 2          | 2          | 2          |
| 11       | Slide Bushing          | 97064     | 1          | 1          | 1          |
| 12       | Spring Rod             | 97065     | 1          | 1          | 1          |
| 13       | Spring                 | 40276     | 1          | 1          | 1          |
| 14       | Flanged Bearing        | 40081     | 2          | 2          | 2          |

Complete Turnbuckle & Chain Assembly  
 #97579 UPC636, UPC648  
 #97580 UPC616  
 (Item #1 not included with either)





PIPE TOOLS & VISES  
SINCE 1896

# Universal Pipe Cutter (Turnbuckle & Chain Assembly)

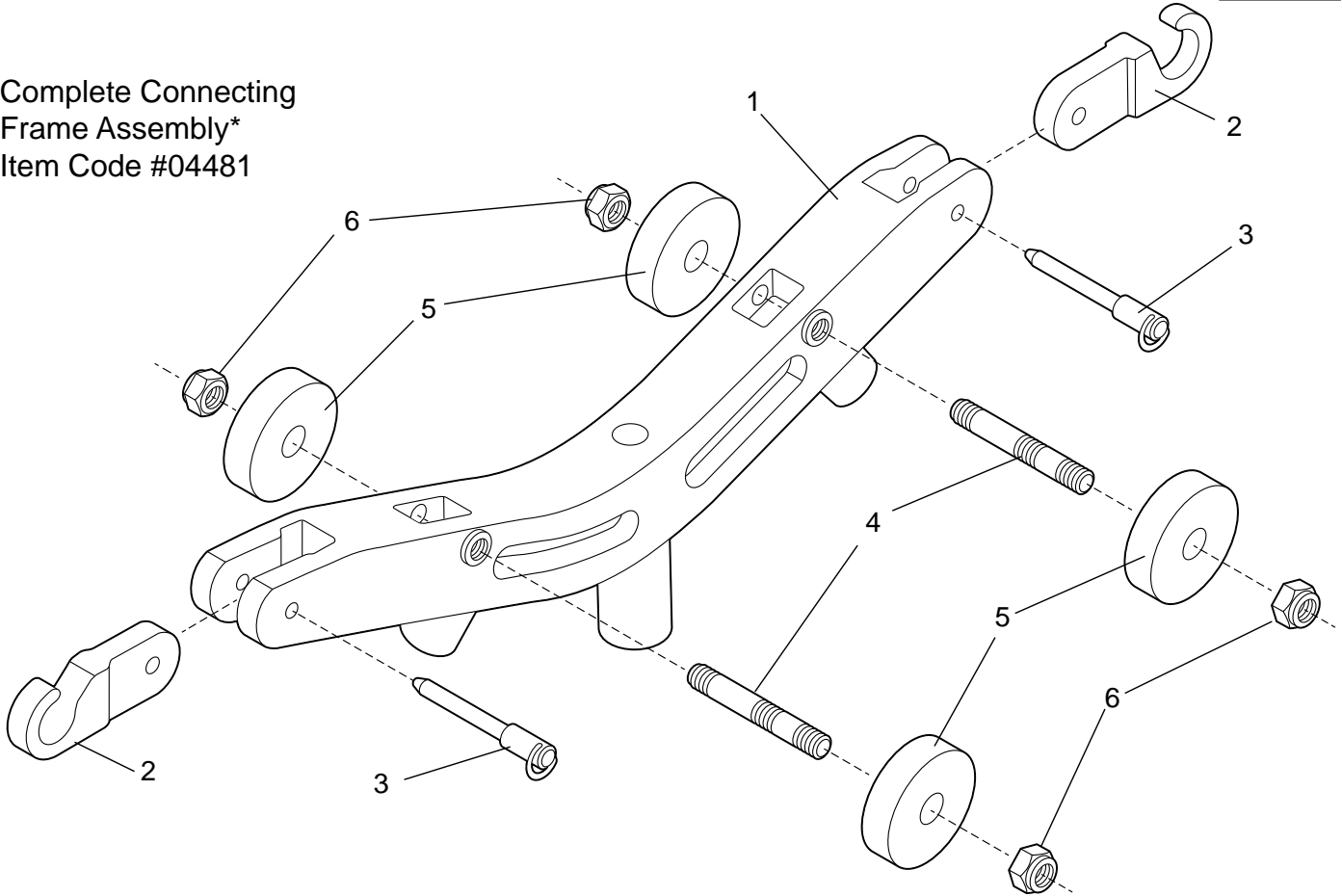
## Replacement Parts

### Pneumatic & Hydraulic Models

Drawing No.

**U8**

Complete Connecting  
Frame Assembly\*  
Item Code #04481



\*Connecting Frame Assembly #04481 does not include part #2 (Chain Hook) & part #3 (Release Pin). These items must be ordered separately. Please refer to chart below.

### Parts List

| Ref. No. | Description  | Item Code | Qty |
|----------|--------------|-----------|-----|
| 1        | PLACC Yoke   | 97569     | 1   |
| 2        | Chain Hook   | 97546     | 2   |
| 3        | Release Pin  | 97545     | 2   |
| 4        | Roller Pin   | 97536     | 2   |
| 5        | PLACR Roller | 97570     | 4   |
| 6        | Flexloc Nut  | 30143     | 4   |

#### Convert UPC616 to UPC636

| Item Code | Description            | Quantity Used |
|-----------|------------------------|---------------|
| 04481     | PLASC C Section        | 2             |
| 97546     | Chain Hook             | 2             |
| 97545     | Release Pin            | 2             |
| 97572     | 11 Link Chain Assembly | 2             |

#### Convert UPC636 to UPC648

| Item Code | Description            | Quantity Used |
|-----------|------------------------|---------------|
| 04481     | PLASC C Section        | 1             |
| 97546     | Chain Hook             | 2             |
| 97545     | Release Pin            | 2             |
| 97572     | 11 Link Chain Assembly | 1             |



PIPE TOOLS & VISES  
SINCE 1896

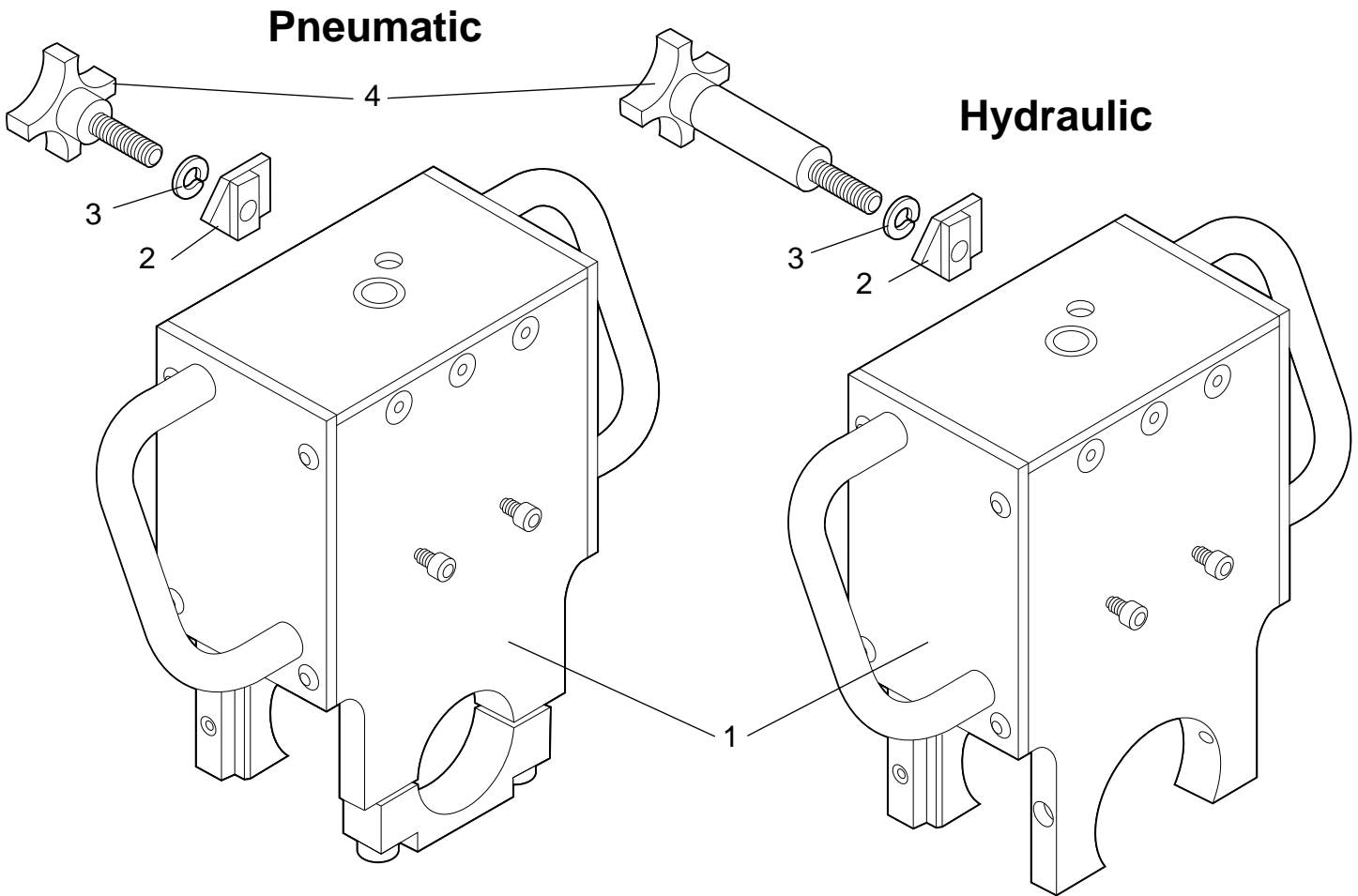
# Universal Pipe Cutter (Motor Bracket Assemblies)

Replacement Parts

Drawing No.

**U9**

## Pneumatic & Hydraulic Models



| Pneumatic |                        |           |     | Hydraulic |                        |           |     |
|-----------|------------------------|-----------|-----|-----------|------------------------|-----------|-----|
| Ref. No.  | Description            | Item Code | Qty | Ref. No.  | Description            | Item Code | Qty |
| 1         | Motor Bracket Assembly | 97555     | 1   | 1         | Motor Bracket Assembly | 97615     | 1   |
| 2         | Nylon Washer           | 97553     | 1   | 2         | Nylon Washer           | 97553     | 1   |
| 3         | Indicator              | 97554     | 1   | 3         | Indicator              | 97554     | 1   |
| 4         | Knob Assembly          | 97552     | 1   | 4         | Knob Assembly          | 97613     | 1   |



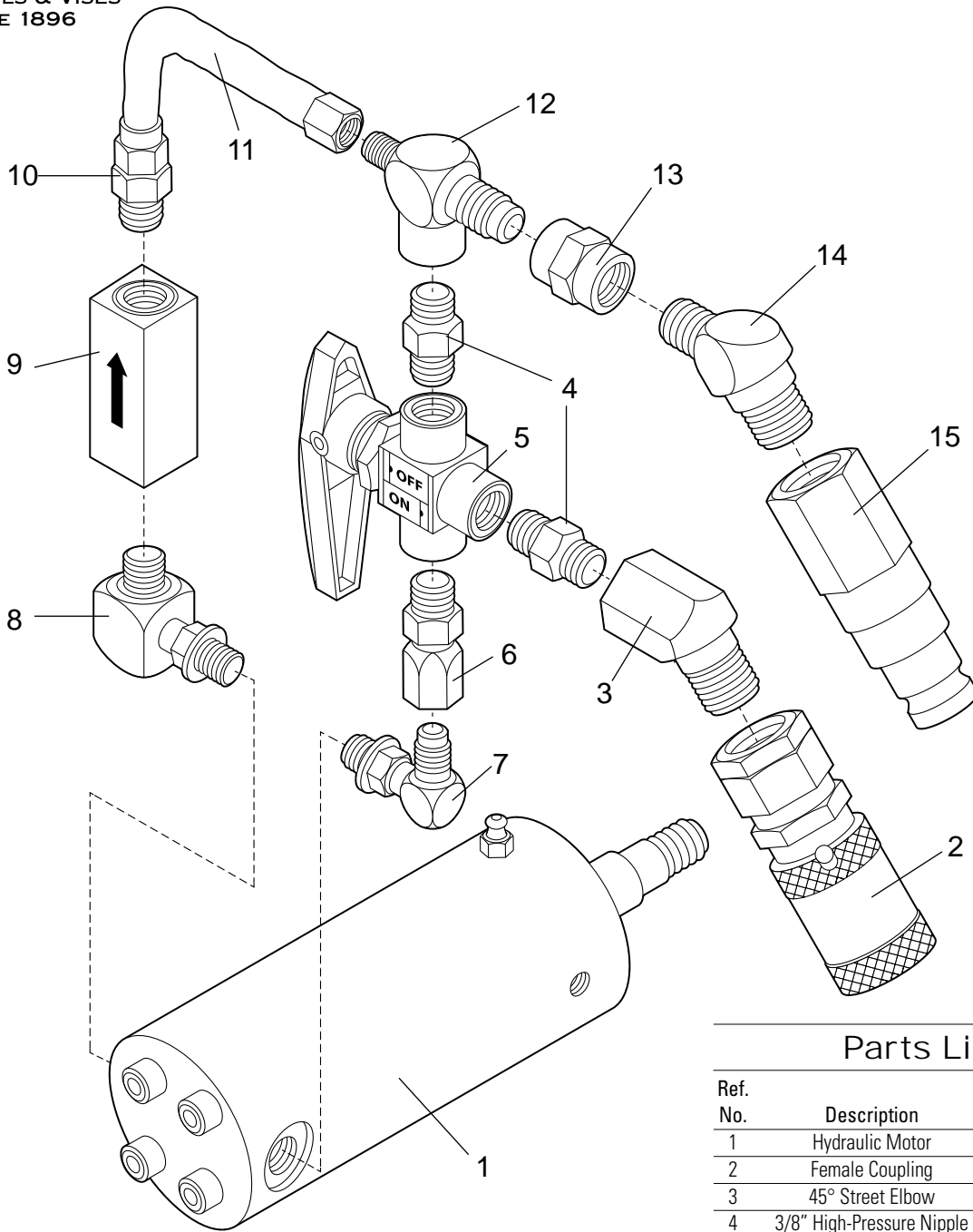
PIPE TOOLS & VISES  
SINCE 1896

# Universal Pipe Cutter (Hydraulic Motor Assembly)

## Replacement Parts

Drawing No.

**U10**



### Parts List

| Ref. No. | Description               | Item Code | Qty |
|----------|---------------------------|-----------|-----|
| 1        | Hydraulic Motor           | 40309     | 1   |
| 2        | Female Coupling           | 40174     | 1   |
| 3        | 45° Street Elbow          | 40180     | 1   |
| 4        | 3/8" High-Pressure Nipple | 40185     | 2   |
| 5        | 3-Way Ball Valve          | 40312     | 1   |
| 6        | Swivel Adapter            | 40176     | 1   |
| 7        | Pressure Line Elbow       | 40179     | 1   |
| 8        | Return Line Elbow         | 40355     | 1   |
| 9        | In-Line Check Valve       | 40354     | 1   |
| 10       | Male Connector            | 40353     | 1   |
| 11       | Tubing Assembly           | 40178     | 1   |
| 12       | Special Shape Tee         | 40182     | 1   |
| 13       | Pipe Coupling             | 40181     | 1   |
| 14       | 45° Male Elbow            | 40175     | 1   |
| 15       | Male Coupling             | 40173     | 1   |

\* UPC Hydraulic models were discontinued at Reed in 2009. Some replacement parts are available.



PIPE TOOLS & VISES  
SINCE 1896

# Universal Pipe Cutter (Pneumatic Motor Assembly)

## Replacement Parts

Drawing No.

**U11**

### Parts List

| Ref. No. | Description                     | Item Code | Qty |
|----------|---------------------------------|-----------|-----|
| 1        | Pneumatic Motor                 | 40150     | 1   |
| 2        | Bronze Close Nipple             | 97564     | 1   |
| 3        | Bronze 90° Elbow                | 97565     | 1   |
| 4        | Bronze Ball Valve               | 97566     | 1   |
| 5        | Bronze Hose Coupling            | 97567     | 1   |
| 6        | Bronze End Cap                  | 97568     | 1   |
| 7        | Hairpin (included with #5 & #6) |           | 1   |

