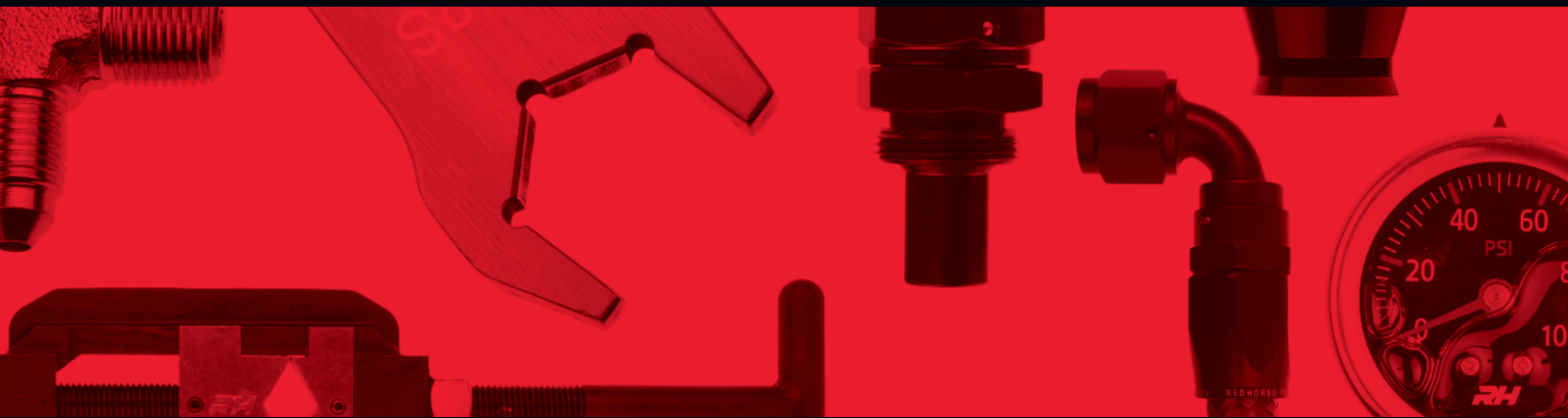


RH **REDHORSE** PERFORMANCE



WE BRING FAST THINGS TO LIFE

PRODUCT CATALOG
VOLUME **7**



REDHORSE PERFORMANCE QUALITY - SERVICE - VALUE

We launched our brand 9 years ago by combining precision machining and skilled labor into a signature product: the hand polished hose end. Often imitated, the Redhorse Performance hose end remains the best looking high performance fitting on the market.

This year we are adding 700 new parts taking our total product offering up to nearly 2800 SKUs. We're now offering a full line of quick connect EFI adapters and hose ends, an all black series of pre-assembled hose ends, an expanded brake line adapter offering, e85 compatible push lock hose and several new filters. We're

particularly excited about the release of our first fuel pump, line of custom designed fuel rails, water necks, block off plates, fuel regulators, nitrous lines, a brand new RHP Assembly tool and custom designed PTFE hose and hose ends.

Each of these items was built from the ground up with the same dedication to performance, design and attention to detail that our customers first discovered with our hand polished hose ends and have come to expect from all Redhorse parts.

Midway through the planning of this catalog, it became clear that our small family run company was entering a new era and we decided to signify this change by updating our logo. We think the new design is sleek, modern and perfectly embodies where we want to go as a company. We hope you will come to like it as much as we do.

While we are proud of every part we make, we are even more proud of the fantastic team we've built to deliver our products to our racers. We live and breathe customer service and are determined to be the most responsive, easy to work with company in the performance industry. Our Chicagoland warehouse is stocked deep and our worldwide network of industry leading distributors will deliver your parts when you need them, no matter where you are located. Our tech department is here to answer any question you might have and our order-desk is always responsive, letting you know when you can expect each and every part.

Above all else, Redhorse remains passionate about providing our customers with unrivaled value. We do not believe it should cost a fortune to equip your vehicle with the highest performing, most aesthetically pleasing performance parts in the world, and with Redhorse, it doesn't.

PART NUMBER TO PAGE NUMBER REFERENCE

SERIES NO.	PAGE	SERIES NO.	PAGE	SERIES NO.	PAGE	SERIES NO.	PAGE	SERIES NO.	PAGE
200	20	806	36	930	28	3302	41	6910	37
205	20	811	24	932	36	3390	40	7000	14
220	44	812	24	950	32	3392	41	7030	14
222	20	813	24	971	39	3400	40	7045	14
230	21	814	36	993	38	3402	41	7060	14
235	21	815	31	1000	8	3500	42	7090	15
300	42	816	28	1030	8	4060	35	7120	15
302	22	818	27	1045	8	4152	35	7150	15
303	22	819	27	1060	8	4501	34	7180	15
316	43	821	30	1090	9	4651	34	7200	16
320	44	822	29	1111	26	4810	35	7220	17
322	43	823	29	1120	9	4910	35	7250	17
323	43	824	30	1150	9	5000	45	7280	17
332	43	825	30	1180	9	5001	45	7245	16
335	42	826	30	1400	11	5020	38	7260	16
336	42	832	33	1200	12	5050	38	7290	16
342	42	833	33	1220	13	5060	38	7910	37
343	43	834	33	1230	12	5100	38	8000	25
344	43	837	33	1245	12	5150	39	8045	25
345	43	840	38	1250	13	5155	39	8090	25
346	43	867	39	1260	12	5160	39	8180	25
347	43	871	39	1280	13	5416	26	8100	32
356	44	880	24	1290	13	5420	26	8145	32
357	44	881	24	2000	18	5468	26	8161	28
358	44	900	23	2045	18	5500	39	8190	32
359	44	910	32	2090	18	5910	37	8262	31
401	23	911	32	2120	19	6030	10	8832	33
402	23	912	32	2150	19	6045	10	9190	31
420	19	917	32	2180	19	6060	10	9192	31
568	26	919	31	3000	27	6090	10	9194	28
720	39	920	29	3100	27	6120	11		
730	36	924	33	3200	43	6150	11		
804	33	929	36	3300	40	6180	11		

Redhorse Performance is the only fitting company to offer a lifetime warranty against manufacturing defects.



TABLE OF CONTENTS

INSTRUCTIONS & GUIDES

Hose Assembly Instructions	4
Push Lock Hose Assembly Instructions	5
Assembly Tool Instructions	6
Thread Size Guide	7

GENERAL APPLICATIONS

Swivel Seal Hose Ends	8 - 9
Non-Swivel Hose Ends	10 - 11
Hose End Socket	11
Swivel Seal Hose Ends for PTFE Reusable Style	12 - 13
Crimp Style Hose Ends	14 - 15
Swivel Seal Hose Ends for PTFE Hose Crimp Style	16 - 17
Push Lock Hose Ends	18 - 19
Premium Performance Hoses	20 - 21
PTFE Hose	22
Push Lock Hose	23
Nitrous Oxide Hose	23
OEM Adapters	24 - 25
Tools	26
Hard Line AN Adapters / Tube Nuts / Tube Sleeves	27
AN TO NPT / OEM / Pressure Adapters	28
AN to NPT Adapters	29
AN Tee to AN Male Tee Adapters	30
AN to AN Adapters / Unions / Couplers and Reducers	31
AN / JIC to NPSM / AN to AN / Couplers /	
NPT to NPT Reducers and Tee Adapters	32
AN Bulkhead / Straight / 45° / 90° / Tee Adapters / Nuts	33

FUEL SYSTEM APPLICATIONS

Fuel Filters	34-35
Check Valve / Block Off Plates / Water Necks	35
AN Caps / Plugs / Hose Separators	36
Fuel Rails / In-Tank Fuel Dump / Fuel Regulator	37
Hose Finishers / Hose Nipples / Carburetor Fittings /	
Adapters	38
Dual Feed Carburetor Kits	39
Weld-on Adapters / O-rings	39

BRAKE SYSTEM APPLICATIONS

Universal Brake Hose Assemblies	40-41
PTFE Stainless Steel Brake Hose	42
Brake Line Fittings and Adapters	42-43
Brake Line Accessories	44

MISCELLANEOUS PRODUCTS

Line Clamps / Hose Clamps	44
Pressure Gauges	45
Plan-O-Gram / Display Rack / Merchandise	46



Assembly Instructions for 1000 series, 6000 series fittings & 200, 230, 205 and 235 series hose:

Step 1:

Mark desired length of hose by wrapping it in race or masking tape. Using a fine-tooth hack saw or cut-off wheel, cut through hose at the specified length. Once finished, remove tape and clean away any debris from inside of hose.

NOTE: An even perpendicular cut is important in ensuring proper installation; tape must be removed to create proper seal between hose and socket.

Step 2:

Hold or clamp socket in place with soft vise jaws and insert hose by turning hose clockwise. Turn hose clockwise until hose is snug against the back of socket threads.

Step 3:

Mark hose with tape or marker at rear of socket. This will later show you if the hose has pushed out of the socket during assembly, and if so, may leak when used.

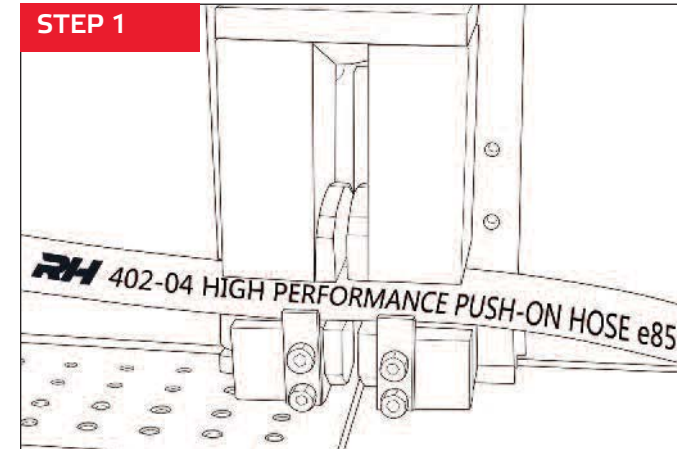
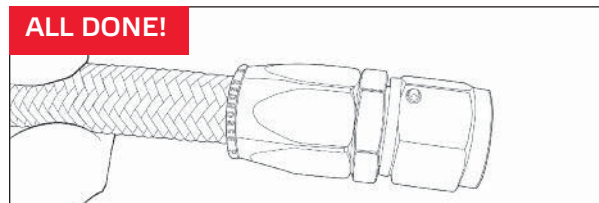
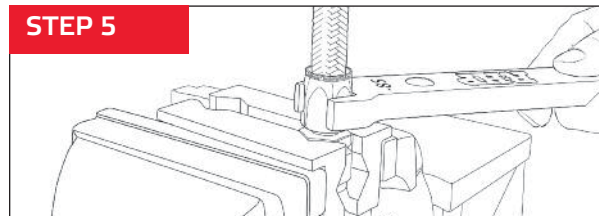
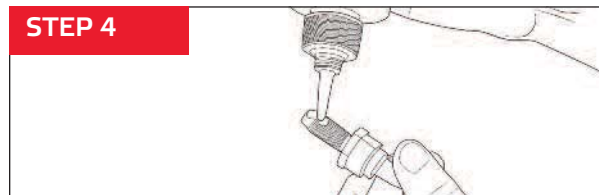
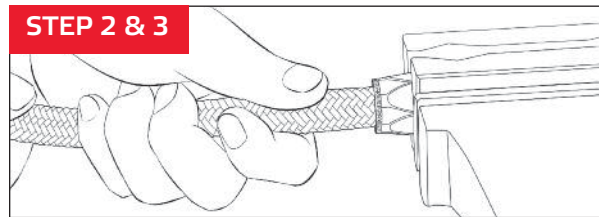
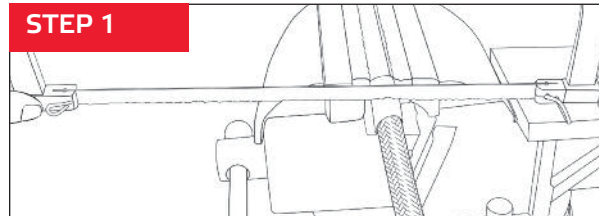
Step 4:

Liberal apply RHP Assembly Lube to nipple before placing nipple into soft vise jaws and turning socket onto nipple threads.

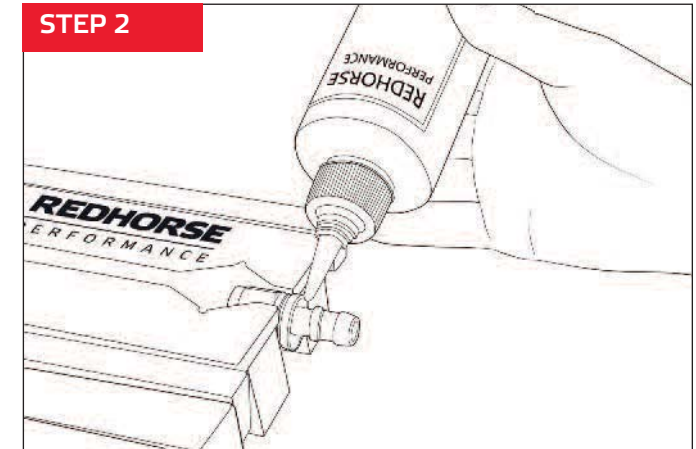
Step 5:

Start threading socket over the nipple by hand. Continue to tighten by hand as far as possible. Using a wrench continue turning socket onto nipple threads until the base of the socket is within .060-.080" of contact with the back of the nipple hex or until there is no more than a 1/16" gap between the base of the socket and nipple hex.

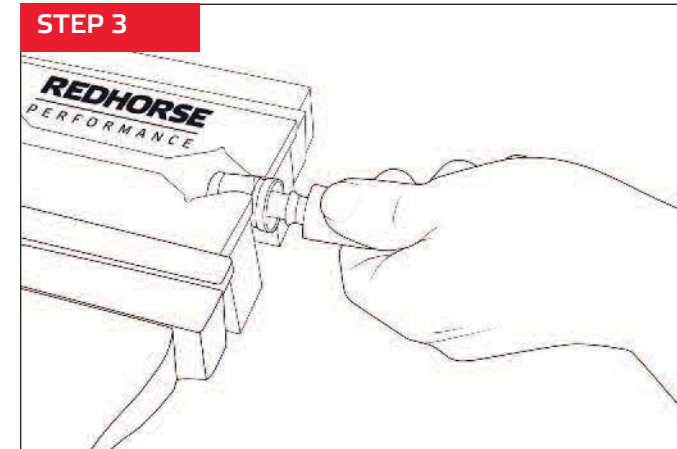
NOTE: After installation, wash and then test assembly for an interval of 30 to 60 seconds using twice the maximum operating pressure.



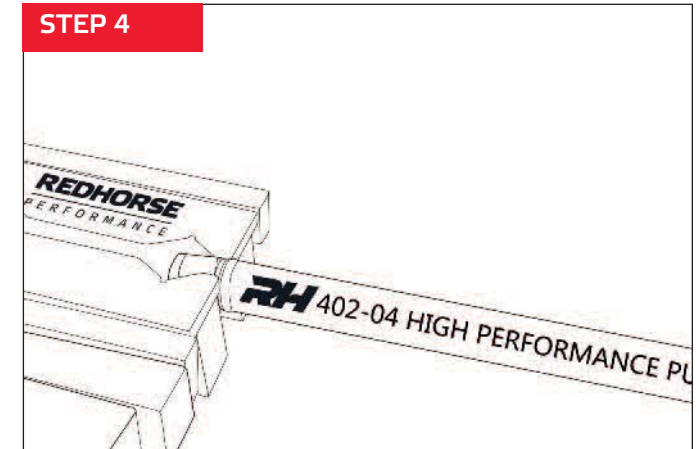
Cut push lock hose to size with saw, chopping block or sharp pair of shears.



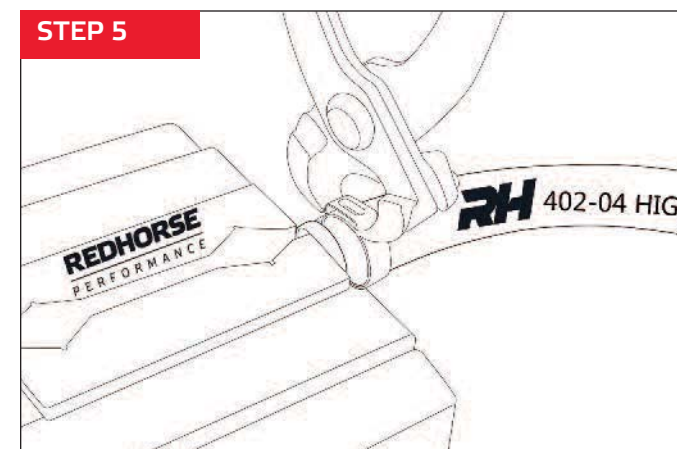
Secure push lock fitting in RHP Vise Jaws and liberally apply RHP Assembly lube to the nipple of the push lock hose end.



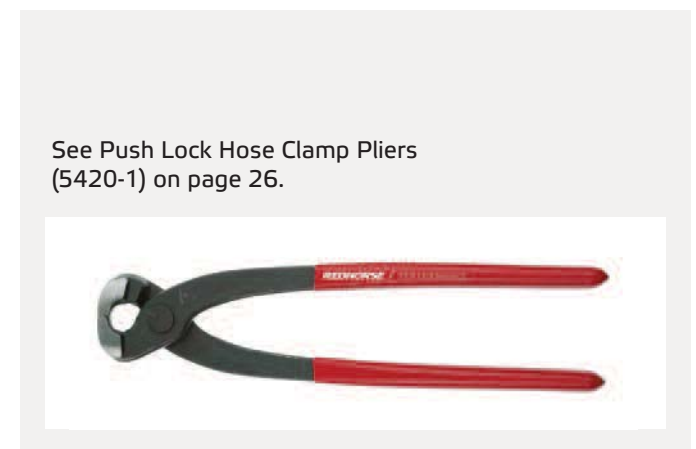
Push the hose onto the nipple using a firm, gradual twisting motion.



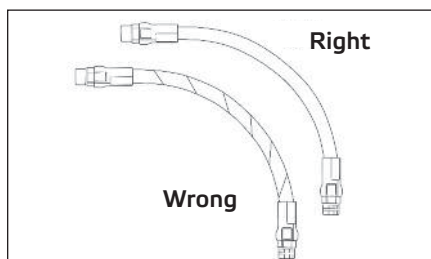
Hose should be snug against the aluminum collar on the fitting.



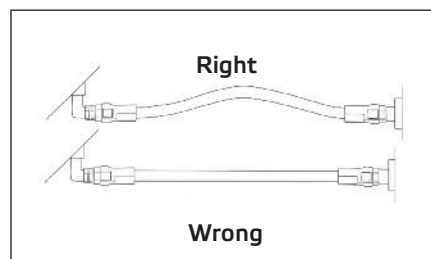
Use the RHP Push Lock Hose Crimping tool to apply the RHP 420 Series Push Lock Hose Clamp in between the two barbs of the Push Lock Nipple.



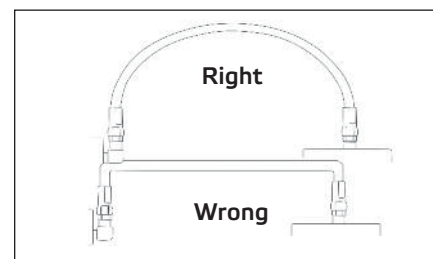
HOSE INSTALLATION TIPS



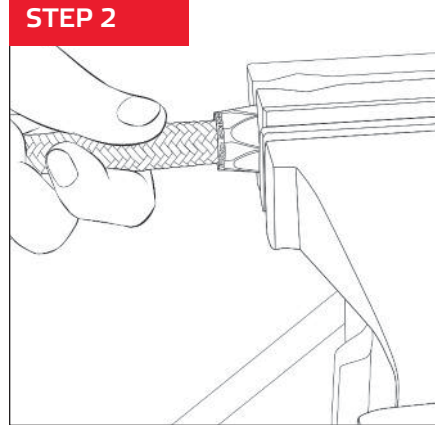
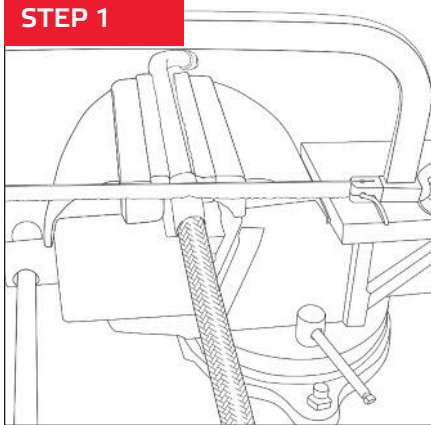
1. Avoid twisting hose when installing.



2. Allow some slack in assembly for changes in length that occur under pressure.



3. When routing hose line, provide a smooth bend radius. Avoid sharp bends which may cause hose to collapse and restrict flow.

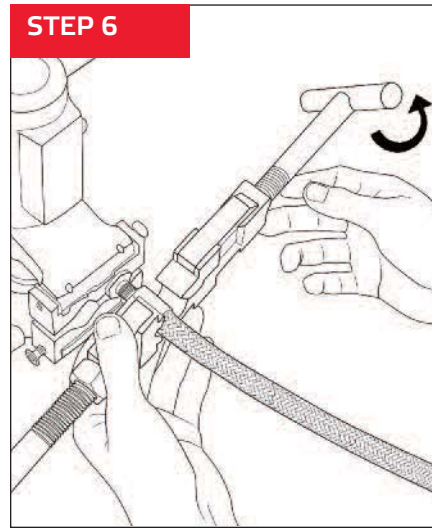
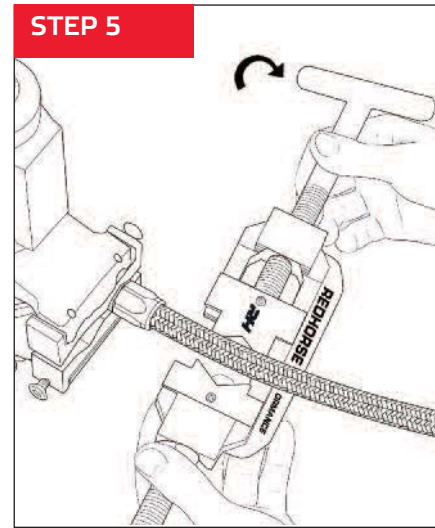
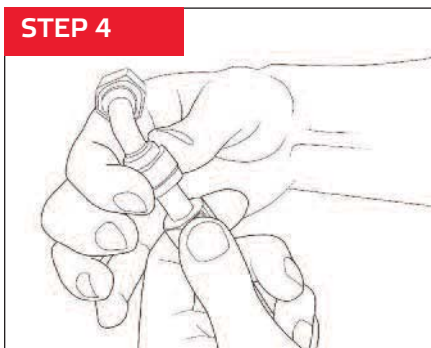


Mark desired length of hose before wrapping in masking tape. Measure again and mark desired length on tape. Using a fine-tooth hack saw or angle grinder cut through hose at specified length. Once finished, remove tape and clean hose.

Hold or clamp socket in place and insert hose by turning hose clockwise. Turn hose clockwise until hose is snug against back of socket threads.

Liberaly apply lubrication oil to nipple.

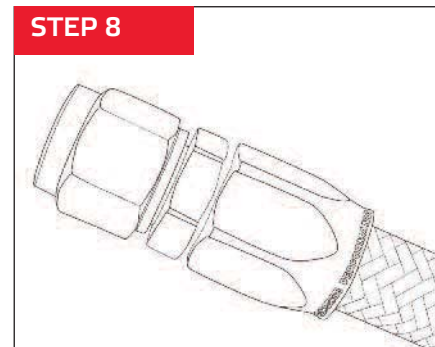
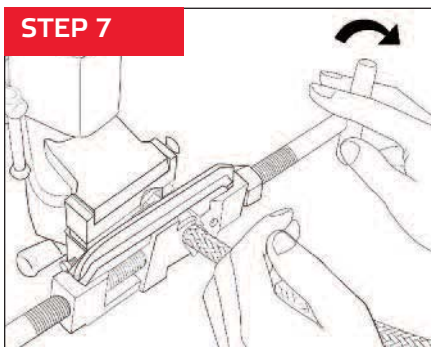
NOTE: An even perpendicular cut is important in ensuring proper installation; masking tape must be removed to create proper seal between hose and socket.



Use hands to thread nipple into socket until it begins to meet with resistance.

Place nipple in RHP Vise Jaws and Position RHP Assembly tool underneath the hose assembly so that the "RH" logo is on your right.

Twist the right hand handle to adjust the die size to fit snug against the socket (RHP Assembly tool will work on all sizes -04 through -16).



Turn the RHP Assembly Tool clockwise until the socket is nearly touching up against the base of the nipple.

YOU'RE DONE! Be sure to leave a small space (about enough for a playing card to fit into) between the nipple and base of the socket.

See Assembly Tool (5416-1) on page 26.

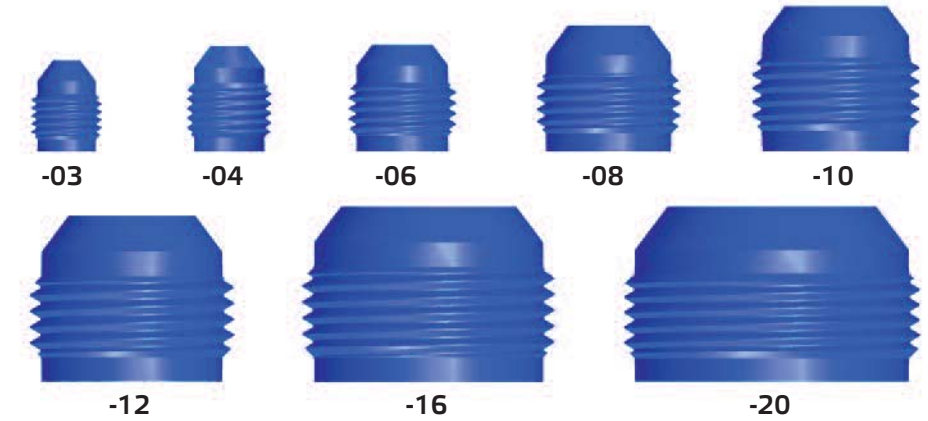


AN THREADS

Use the profiles below to determine the AN thread before ordering. The corresponding chart shows the related metal rube outer diameter and thread size for each size.

AN/JIC LEGEND

DASH SIZE	HOSE SIZE	THREAD SIZE
-03	3/16	3/8-24 SAE
-04	1/4	7/16-20 SAE
-06	3/8	9/16-18 SAE
-08	1/2	3/4-16 SAE
-10	5/8	7/8-14 SAE
-12	3/4	1-1/16-12 SAE
-16	1	1-5/16-12 SAE
-20	1-1/4	1-5/8-12SAE

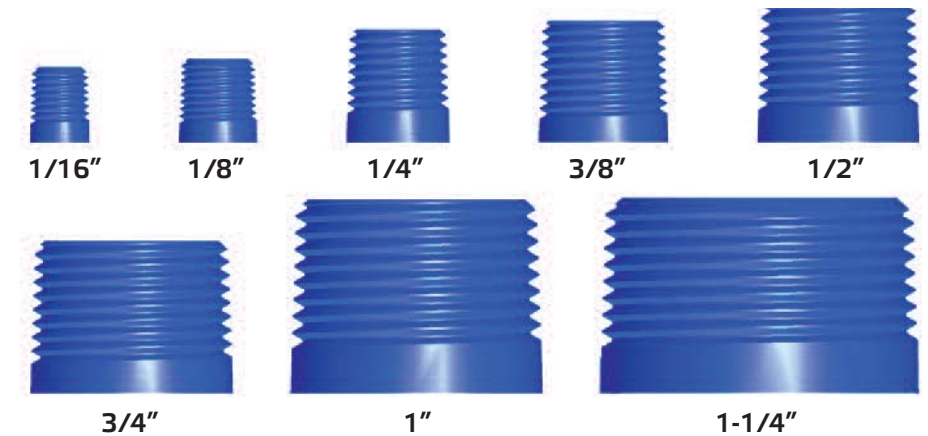


NPT THREADS

Use the profiles below to determine the correct NPT thread before ordering. The corresponding chart shows the thread size, threads per inch, OD and closest AN size for each size.

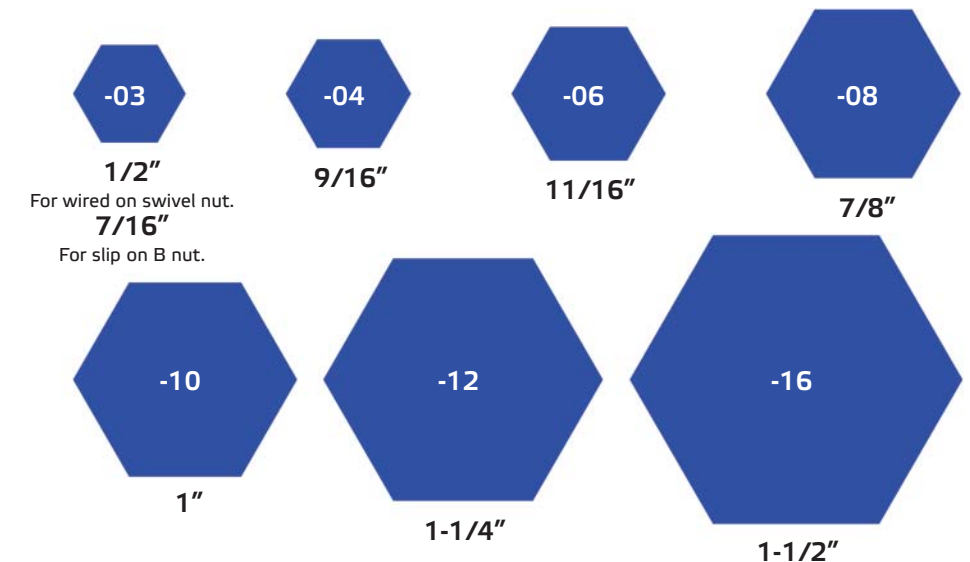
NPT LEGEND

PIPE THREAD	THREADS PER INCH	INSIDE DIAMETER
1/8	27	1/8
1/4	18	1/7
3/8	18	3/8
1/2	14	1/2
3/4	14	3/4
1	11-1/2	1



B-NUT SIZES

Use the profiles below to determine the correct B-nut size before ordering.





Our most popular fittings, the RHP 1000 Series Swivel Seal Hose Ends are cut from 6061 T-6 aluminum on our CNC machines resulting in superior thread strength and smooth assembly. RHP's custom designed, rigorously engineered fittings deliver high performance while enabling quick, easy and consistent hose assembly. Our double Viton O-ring seals provide leak free performance when used with a wide range of racing fuels and fluids. RHP's famous hand polishing and color consistent anodizing add the final touch of quality that professional engine builders have come to expect from Redhorse.

RHP 1000 Series Hose Ends are engineered for use with RHP Series 200, 205, 230 and 235 hoses. For best assembly results use in conjunction with the RHP Assembly Tool, RHP AN Wrenches, RHP Vise Jaws and RHP Assembly Lube.

RED/BLUE STRAIGHT	BLK/BLK STRAIGHT	CLR/CLR STRAIGHT	HOSE END	HOSE SIZE	ADAPTER SIZE	1000SERIES
1000-04-1	1000-04-2	1000-04-5	4	4	4	
1000-06-1	1000-06-2	1000-06-5	6	6	6	
1000-08-1	1000-08-2	1000-08-5	8	8	8	
1000-10-1	1000-10-2	1000-10-5	10	10	10	
1000-12-1	1000-12-2	1000-12-5	12	12	12	
1000-16-1	1000-16-2	1000-16-5	16	16	16	

RED/BLUE 30°	BLK/BLK 30°	CLR/CLR 30°	HOSE END	HOSE SIZE	ADAPTER SIZE	1030SERIES
1030-04-1	1030-04-2	1030-04-5	4	4	4	
1030-06-1	1030-06-2	1030-06-5	6	6	6	
1030-08-1	1030-08-2	1030-08-5	8	8	8	
1030-10-1	1030-10-2	1030-10-5	10	10	10	
1030-12-1	1030-12-2	1030-12-5	12	12	12	
1030-16-1	1030-16-2	1030-16-5	16	16	16	

RED/BLUE 45°	BLK/BLK 45°	CLR/CLR 45°	HOSE END	HOSE SIZE	ADAPTER SIZE	1045SERIES
1045-04-1	1045-04-2	1045-04-5	4	4	4	
1045-06-1	1045-06-2	1045-06-5	6	6	6	
1045-08-1	1045-08-2	1045-08-5	8	8	8	
1045-10-1	1045-10-2	1045-10-5	10	10	10	
1045-12-1	1045-12-2	1045-12-5	12	12	12	
1045-16-1	1045-16-2	1045-16-5	16	16	16	

RED/BLUE 60°	BLK/BLK 60°	CLR/CLR 60°	HOSE END	HOSE SIZE	ADAPTER SIZE	1060SERIES
1060-04-1	1060-04-2	1060-04-5	4	4	4	
1060-06-1	1060-06-2	1060-06-5	6	6	6	
1060-08-1	1060-08-2	1060-08-5	8	8	8	
1060-10-1	1060-10-2	1060-10-5	10	10	10	
1060-12-1	1060-12-2	1060-12-5	12	12	12	
1060-16-1	1060-16-2	1060-16-5	16	16	16	

1090SERIES	RED/BLUE 90°	BLK/BLK 90°	CLR/CLR 90°	HOSE END	HOSE SIZE	ADAPTER SIZE
	1090-04-1	1090-04-2	1090-04-5	4	4	4
	1090-06-1	1090-06-2	1090-06-5	6	6	6
	1090-08-1	1090-08-2	1090-08-5	8	8	8
	1090-10-1	1090-10-2	1090-10-5	10	10	10
	1090-12-1	1090-12-2	1090-12-5	12	12	12
	1090-16-1	1090-16-2	1090-16-5	16	16	16

1120SERIES	RED/BLUE 120°	BLK/BLK 120°	CLR/CLR 120°	HOSE END	HOSE SIZE	ADAPTER SIZE
	1120-04-1	1120-04-2	1120-04-5	4	4	4
	1120-06-1	1120-06-2	1120-06-5	6	6	6
	1120-08-1	1120-08-2	1120-08-5	8	8	8
	1120-10-1	1120-10-2	1120-10-5	10	10	10
	1120-12-1	1120-12-2	1120-12-5	12	12	12
	1120-16-1	1120-16-2	1120-16-5	16	16	16

1150SERIES	RED/BLUE 150°	BLK/BLK 150°	CLR/CLR 150°	HOSE END	HOSE SIZE	ADAPTER SIZE
	1150-04-1	1150-04-2	1150-04-5	4	4	4
	1150-06-1	1150-06-2	1150-06-5	6	6	6
	1150-08-1	1150-08-2	1150-08-5	8	8	8
	1150-10-1	1150-10-2	1150-10-5	10	10	10
	1150-12-1	1150-12-2	1150-12-5	12	12	12
	1150-16-1	1150-16-2	1150-16-5	16	16	16

1180SERIES	RED/BLUE 180°	BLK/BLK 180°	CLR/CLR 180°	HOSE END	HOSE SIZE	ADAPTER SIZE
	1180-04-1	1180-04-2	1180-04-5	4	4	4
	1180-06-1	1180-06-2	1180-06-5	6	6	6
	1180-08-1	1180-08-2	1180-08-5	8	8	8
	1180-10-1	1180-10-2	1180-10-5	10	10	10
	1180-12-1	1180-12-2	1180-12-5	12	12	12
	1180-16-1	1180-16-2	1180-16-5	16	16	16



NON-SWIVEL HOSE ENDS



RHP 6000 Series Swivel Seal Hose Ends are cut from 6061 T-6 aluminum on our CNC machines resulting in superior thread strength and smooth assembly. RHP's custom designed, rigorously engineered fittings deliver high performance while enabling quick, easy and consistent hose assembly. These hose ends are a great alternative for the price conscious, do-it-yourselfer and hardcore racing fanatics alike. RHP's famous hand polishing and color consistent anodizing add the final touch of quality that professional engine builders have come to expect from Redhorse.

RHP 6000 Series Hose Ends are engineered for use with RHP Series 200, 205, 230 and 235 hoses. For best assembly results use in conjunction with the RHP Assembly Tool, RHP AN Wrenches, RHP Vise Jaws and RHP Assembly Lube.

RED/BLUE 30°	BLK/BLK 30°	CLR/CLR 30°	HOSE END	HOSE SIZE	ADAPTER SIZE	6030SERIES
6030-04-1	6030-04-2	6030-04-5	4	4	4	
6030-06-1	6030-06-2	6030-06-5	6	6	6	
6030-08-1	6030-08-2	6030-08-5	8	8	8	
6030-10-1	6030-10-2	6030-10-5	10	10	10	
6030-12-1	6030-12-2	6030-12-5	12	12	12	
6030-16-1	6030-16-2	6030-16-5	16	16	16	

RED/BLUE 45°	BLK/BLK 45°	CLR/CLR 45°	HOSE END	HOSE SIZE	ADAPTER SIZE	6045SERIES
6045-04-1	6045-04-2	6045-04-5	4	4	4	
6045-06-1	6045-06-2	6045-06-5	6	6	6	
6045-08-1	6045-08-2	6045-08-5	8	8	8	
6045-10-1	6045-10-2	6045-10-5	10	10	10	
6045-12-1	6045-12-2	6045-12-5	12	12	12	
6045-16-1	6045-16-2	6045-16-5	16	16	16	

RED/BLUE 60°	BLK/BLK 60°	CLR/CLR 60°	HOSE END	HOSE SIZE	ADAPTER SIZE	6060SERIES
6060-04-1	6060-04-2	6060-04-5	4	4	4	
6060-06-1	6060-06-2	6060-06-5	6	6	6	
6060-08-1	6060-08-2	6060-08-5	8	8	8	
6060-10-1	6060-10-2	6060-10-5	10	10	10	
6060-12-1	6060-12-2	6060-12-5	12	12	12	
6060-16-1	6060-16-2	6060-16-5	16	16	16	

RED/BLUE 90°	BLK/BLK 90°	CLR/CLR 90°	HOSE END	HOSE SIZE	ADAPTER SIZE	6090SERIES
6090-04-1	6090-04-2	6090-04-5	4	4	4	
6090-06-1	6090-06-2	6090-06-5	6	6	6	
6090-08-1	6090-08-2	6090-08-5	8	8	8	
6090-10-1	6090-10-2	6090-10-5	10	10	10	
6090-12-1	6090-12-2	6090-12-5	12	12	12	
6090-16-1	6090-16-2	6090-16-5	16	16	16	

NON-SWIVEL HOSE ENDS



6120SERIES	RED/BLUE 120°	BLK/BLK 120°	CLR/CLR 120°	HOSE END	HOSE SIZE	ADAPTER SIZE
	6120-04-1	6120-04-2	6120-04-5	4	4	4
	6120-06-1	6120-06-2	6120-06-5	6	6	6
	6120-08-1	6120-08-2	6120-08-5	8	8	8
	6120-10-1	6120-10-2	6120-10-5	10	10	10
	6120-12-1	6120-12-2	6120-12-5	12	12	12
	6120-16-1	6120-16-2	6120-16-5	16	16	16

6150SERIES	RED/BLUE 150°	BLK/BLK 150°	CLR/CLR 150°	HOSE END	HOSE SIZE	ADAPTER SIZE
	6150-04-1	6150-04-2	6150-04-5	4	4	4
	6150-06-1	6150-06-2	6150-06-5	6	6	6
	6150-08-1	6150-08-2	6150-08-5	8	8	8
	6150-10-1	6150-10-2	6150-10-5	10	10	10
	6150-12-1	6150-12-2	6150-12-5	12	12	12
	6150-16-1	6150-16-2	6150-16-5	16	16	16

6180SERIES	RED/BLUE 180°	BLK/BLK 180°	CLR/CLR 180°	HOSE END	HOSE SIZE	ADAPTER SIZE
	6180-04-1	6180-04-2	6180-04-5	4	4	4
	6180-06-1	6180-06-2	6180-06-5	6	6	6
	6180-08-1	6180-08-2	6180-08-5	8	8	8
	6180-10-1	6180-10-2	6180-10-5	10	10	10
	6180-12-1	6180-12-2	6180-12-5	12	12	12
	6180-16-1	6180-16-2	6180-16-5	16	16	16

HOSE END SOCKET

Redhorse Performance now offers hose end sockets separately. These sockets are for use on all of our two piece hose ends. This is an excellent option for replacing worn or damaged sockets and creating custom color combinations for your performance plumbing project at a minimal cost. Now available in clear anodized finish.



1400SERIES	RED SOCKET	BLACK SOCKET	CLEAR SOCKET	HOSE END	HOSE SIZE
	1400-04-3	1400-04-2	1400-04-5	4	4
	1400-06-3	1400-06-2	1400-06-5	6	6
	1400-08-3	1400-08-2	1400-08-5	8	8
	1400-10-3	1400-10-2	1400-10-5	10	10
	1400-12-3	1400-12-2	1400-12-5	12	12
	1400-16-3	1400-16-2	1400-16-5	16	16



SWIVEL SEAL HOSE ENDS FOR PTFE REUSABLE STYLE - **NEW!**



Plumb your vehicle with the unrivaled fuel compatibility of PTFE Hose with the RHP 1200 Series Reusable Swivel Seal PTFE fittings. As always, the RHP 1200 Series fittings are cut from 6061 T-6 aluminum on our CNC machine turning centers providing superior thread strength and smooth assembly. Our double Viton O-ring seals provide leak free performance when used with a wide range of racing fuels and fluids. RHP's famous hand polishing and color consistent anodizing add the final touch of quality that professional engine builders have come to expect from Redhorse.

The RHP 1200 Series Reusable Swivel Seal PTFE are engineered for the exclusive use with our 302 and 303 series PTFE Hoses. Not to be used with standard braided racing hoses.

RED/BLUE STRAIGHT	BLACK STRAIGHT	CLEAR STRAIGHT	HOSE END	HOSE SIZE	ADPTR. SIZE	1200SERIES
1200-04-1	1200-04-2	1200-04-5	4	4	4	
1200-06-1	1200-06-2	1200-06-5	6	6	6	
1200-08-1	1200-08-2	1200-08-5	8	8	8	
1200-10-1	1200-10-2	1200-10-5	10	10	10	
1200-12-1	1200-12-2	1200-12-5	12	12	12	

RED/BLUE 30°	BLACK 30°	CLEAR 30°	HOSE END	HOSE SIZE	ADPTR. SIZE	1230SERIES
1230-04-1	1230-04-2	1230-04-5	4	4	4	
1230-06-1	1230-06-2	1230-06-5	6	6	6	
1230-08-1	1230-08-2	1230-08-5	8	8	8	
1230-10-1	1230-10-2	1230-10-5	10	10	10	
1230-12-1	1230-12-2	1230-12-5	12	12	12	

RED/BLUE 45°	BLACK 45°	CLEAR 45°	HOSE END	HOSE SIZE	ADPTR. SIZE	1245SERIES
1245-04-1	1245-04-2	1245-04-5	4	4	4	
1245-06-1	1245-06-2	1245-06-5	6	6	6	
1245-08-1	1245-08-2	1245-08-5	8	8	8	
1245-10-1	1245-10-2	1245-10-5	10	10	10	
1245-12-1	1245-12-2	1245-12-5	12	12	12	

RED/BLUE 60°	BLACK 60°	CLEAR 60°	HOSE END	HOSE SIZE	ADPTR. SIZE	1260SERIES
1260-04-1	1260-04-2	1260-04-5	4	4	4	
1260-06-1	1260-06-2	1260-06-5	6	6	6	
1260-08-1	1260-08-2	1260-08-5	8	8	8	
1260-10-1	1260-10-2	1260-10-5	10	10	10	
1260-12-1	1260-12-2	1260-12-5	12	12	12	

SWIVEL SEAL HOSE ENDS FOR PTFE REUSABLE STYLE - **NEW!**



1290SERIES	RED/BLUE 90°	BLACK 90°	CLEAR 90°	HOSE END	HOSE SIZE	ADPTR. SIZE
	1290-04-1	1290-04-2	1290-04-5	4	4	4
	1290-06-1	1290-06-2	1290-06-5	6	6	6
	1290-08-1	1290-08-2	1290-08-5	8	8	8
	1290-10-1	1290-10-2	1290-10-5	10	10	10
	1290-12-1	1290-12-2	1290-12-5	12	12	12

1220SERIES	RED/BLUE 120°	BLACK 120°	CLEAR 120°	HOSE END	HOSE SIZE	ADPTR. SIZE
	1220-04-1	1220-04-2	1220-04-5	4	4	4
	1220-06-1	1220-06-2	1220-06-5	6	6	6
	1220-08-1	1220-08-2	1220-08-5	8	8	8
	1220-10-1	1220-10-2	1220-10-5	10	10	10
	1220-12-1	1220-12-2	1220-12-5	12	12	12

1250SERIES	RED/BLUE 150°	BLACK 150°	CLEAR 150°	HOSE END	HOSE SIZE	ADPTR. SIZE
	1250-04-1	1250-04-2	1250-04-5	4	4	4
	1250-06-1	1250-06-2	1250-06-5	6	6	6
	1250-08-1	1250-08-2	1250-08-5	8	8	8
	1250-10-1	1250-10-2	1250-10-5	10	10	10
	1250-12-1	1250-12-2	1250-12-5	12	12	12

1280SERIES	RED/BLUE 180°	BLACK 180°	CLEAR 180°	HOSE END	HOSE SIZE	ADPTR. SIZE
	1280-04-1	1280-04-2	1280-04-5	4	4	4
	1280-06-1	1280-06-2	1280-06-5	6	6	6
	1280-08-1	1280-08-2	1280-08-5	8	8	8
	1280-10-1	1280-10-2	1280-10-5	10	10	10
	1280-12-1	1280-12-2	1280-12-5	12	12	12




CRIMP STYLE HOSE ENDS




The RHP 7000 series crimp style fittings are cut from 6061 T-6 aluminum on our CNC machine turning centers. RHP's custom designed crimp style fittings are engineered to handle over 6000 PSI of pressure and make assembly quick and easy: just cut the hose, shoulder the hose against the base of the nut and crimp. Our swivel hose ends allow for quick alignment after assembly and RHP's famous hand polishing and color consistent anodizing add the final touch of quality that professional engine builders have come to expect from Redhorse.

The RHP 7000 series fittings are engineered for use with our 200, 205, 230 and 235 series hoses. Must be assembled with use of crimping tool or machine along with our 7000-0 Series Aluminum Crimp Collars.


CLR/BLUE STRAIGHT	CLR/BLK STRAIGHT	CLR/RED STRAIGHT	CLR/CLR STRAIGHT	HOSE END	HOSE SIZE	ADPTR. SIZE	7000SERIES
7000-06-1	7000-06-2	7000-06-3	7000-06-5	6	6	6	
7000-08-1	7000-08-2	7000-08-3	7000-08-5	8	8	8	
7000-10-1	7000-10-2	7000-10-3	7000-10-5	10	10	10	
7000-12-1	7000-12-2	7000-12-3	7000-12-5	12	12	12	
7000-16-1	7000-16-2	7000-16-3	7000-16-5	16	16	16	




CLR/BLUE 30°	CLR/BLK 30°	CLR/RED 30°	CLR/CLR 30°	HOSE END	HOSE SIZE	ADPTR. SIZE	7030SERIES
7030-06-1	7030-06-2	7030-06-3	7030-06-5	6	6	6	
7030-08-1	7030-08-2	7030-08-3	7030-08-5	8	8	8	
7030-10-1	7030-10-2	7030-10-3	7030-10-5	10	10	10	
7030-12-1	7030-12-2	7030-12-3	7030-12-5	12	12	12	
7030-16-1	7030-16-2	7030-16-3	7030-16-5	16	16	16	



CLR/BLUE 45°	CLR/BLK 45°	CLR/RED 45°	CLR/CLR 45°	HOSE END	HOSE SIZE	ADPTR. SIZE	7045SERIES
7045-06-1	7045-06-2	7045-06-3	7045-06-5	6	6	6	
7045-08-1	7045-08-2	7045-08-3	7045-08-5	8	8	8	
7045-10-1	7045-10-2	7045-10-3	7045-10-5	10	10	10	
7045-12-1	7045-12-2	7045-12-3	7045-12-5	12	12	12	
7045-16-1	7045-16-2	7045-16-3	7045-16-5	16	16	16	











CLR/BLUE 60°	CLR/BLK 60°	CLR/RED 60°	CLR/CLR 60°	HOSE END	HOSE SIZE	ADPTR. SIZE	7060SERIES
7060-06-1	7060-06-2	7060-06-3	7060-06-5	6	6	6	
7060-08-1	7060-08-2	7060-08-3	7060-08-5	8	8	8	
7060-10-1	7060-10-2	7060-10-3	7060-10-5	10	10	10	
7060-12-1	7060-12-2	7060-12-3	7060-12-5	12	12	12	
7060-16-1	7060-16-2	7060-16-3	7060-16-5	16	16	16	











CRIMP STYLE HOSE ENDS



7090SERIES	CLR/BLUE 90°	CLR/BLK 90°	CLR/RED 90°	CLR/CLR 90°	HOSE END	HOSE SIZE	ADPTR. SIZE
	7090-06-1	7090-06-2	7090-06-3	7090-06-5	6	6	6
	7090-08-1	7090-08-2	7090-08-3	7090-08-5	8	8	8
	7090-10-1	7090-10-2	7090-10-3	7090-10-5	10	10	10
	7090-12-1	7090-12-2	7090-12-3	7090-12-5	12	12	12
	7090-16-1	7090-16-2	7090-16-3	7090-16-5	16	16	16

7120SERIES	CLR/BLUE 120°	CLR/BLK 120°	CLR/RED 120°	CLR/CLR 120°	HOSE END	HOSE SIZE	ADPTR. SIZE
	7120-06-1	7120-06-2	7120-06-3	7120-06-5	6	6	6
	7120-08-1	7120-08-2	7120-08-3	7120-08-5	8	8	8
	7120-10-1	7120-10-2	7120-10-3	7120-10-5	10	10	10
	7120-12-1	7120-12-2	7120-12-3	7120-12-5	12	12	12
	7120-16-1	7120-16-2	7120-16-3	7120-16-5	16	16	16

7150SERIES	CLR/BLUE 150°	CLR/BLK 150°	CLR/RED 150°	CLR/CLR 150°	HOSE END	HOSE SIZE	ADPTR. SIZE
	7150-06-1	7150-06-2	7150-06-3	7150-06-5	6	6	6
	7150-08-1	7150-08-2	7150-08-3	7150-08-5	8	8	8
	7150-10-1	7150-10-2	7150-10-3	7150-10-5	10	10	10
	7150-12-1	7150-12-2	7150-12-3	7150-12-5	12	12	12
	7150-16-1	7150-16-2	7150-16-3	7150-16-5	16	16	16

7180SERIES	CLR/BLUE 180°	CLR/BLK 180°	CLR/RED 180°	CLR/CLR 180°	HOSE END	HOSE SIZE	ADPTR. SIZE
	7180-06-1	7180-06-2	7180-06-3	7180-06-5	6	6	6
	7180-08-1	7180-08-2	7180-08-3	7180-08-5	8	8	8
	7180-10-1	7180-10-2	7180-10-3	7180-10-5	10	10	10
	7180-12-1	7180-12-2	7180-12-3	7180-12-5	12	12	12
	7180-16-1	7180-16-2	7180-16-3	7180-16-5	16	16	16



CRIMP REPLACEMENT COLLAR

PART#	DESCRIPTION
7000-06-0	-06 Polished Aluminum Replacement Crimp Collars 6/pkg
7000-08-0	-08 Polished Aluminum Replacement Crimp Collars 6/pkg
7000-10-0	-10 Polished Aluminum Replacement Crimp Collars 6/pkg
7000-12-0	-12 Polished Aluminum Replacement Crimp Collars 6/pkg
7000-16-0	-16 Polished Aluminum Replacement Crimp Collars 6/pkg



SWIVEL SEAL HOSE ENDS FOR PTFE HOSE CRIMP STYLE



Plumb your vehicle with the unrivaled fuel compatibility of PTFE Hose with the RHP 7200 PTFE Crimp Style Hose Ends. As always, the RHP 7200 Series Hose Ends are cut from 6061 T-6 aluminum on our CNC machines. RHP's custom designed crimp style fittings are engineered to handle over 6000 PSI of pressure and make assembly quick and easy: just cut the hose, shoulder the hose against the base of the nut and crimp. RHP's famous hand polishing and color consistent anodizing add the final touch of quality that professional engine builders have come to expect from Redhorse.

The RHP 7200 series are engineered for the exclusive use with our 302 and 303 series hoses PTFE hoses. Not to be used with standard braided racing hoses. Must be assembled with use of crimping tool or machine along with our 7200-0 and 7200-9 Series Steel Plated Crimp Collars.

CLR/BLUE STRAIGHT	CLR/BLK STRAIGHT	CLR/RED STRAIGHT	CLR/CLR STRAIGHT	HOSE END	HOSE SIZE	ADPTR. SIZE	7200SERIES
7200-04-1	7200-04-2	7200-04-3	7200-04-5	4	4	4	
7200-06-1	7200-06-2	7200-06-3	7200-06-5	6	6	6	
7200-08-1	7200-08-2	7200-08-3	7200-08-5	8	8	8	
7200-10-1	7200-10-2	7200-10-3	7200-10-5	10	10	10	
7200-12-1	7200-12-2	7200-12-3	7200-12-5	12	12	12	



CLR/BLUE 45°	CLR/BLK 45°	CLR/RED 45°	CLR/CLR 45°	HOSE END	HOSE SIZE	ADPTR. SIZE	7245SERIES
7245-04-1	7245-04-2	7245-04-3	7245-04-5	4	4	4	
7245-06-1	7245-06-2	7245-06-3	7245-06-5	6	6	6	
7245-08-1	7245-08-2	7245-08-3	7245-08-5	8	8	8	
7245-10-1	7245-10-2	7245-10-3	7245-10-5	10	10	10	
7245-12-1	7245-12-2	7245-12-3	7245-12-5	12	12	12	



CLR/BLUE 60°	CLR/BLK 60°	CLR/RED 60°	CLR/CLR 60°	HOSE END	HOSE SIZE	ADPTR. SIZE	7260SERIES
7260-04-1	7260-04-2	7260-04-3	7260-04-5	4	4	4	
7260-06-1	7260-06-2	7260-06-3	7260-06-5	6	6	6	
7260-08-1	7260-08-2	7260-08-3	7260-08-5	8	8	8	
7260-10-1	7260-10-2	7260-10-3	7260-10-5	10	10	10	
7260-12-1	7260-12-2	7260-12-3	7260-12-5	12	12	12	











CLR/BLUE 90°	CLR/BLK 90°	CLR/RED 90°	CLR/CLR 90°	HOSE END	HOSE SIZE	ADPTR. SIZE	7290SERIES
7290-04-1	7290-04-2	7290-04-3	7290-04-5	4	4	4	
7290-06-1	7290-06-2	7290-06-3	7290-06-5	6	6	6	
7290-08-1	7290-08-2	7290-08-3	7290-08-5	8	8	8	
7290-10-1	7290-10-2	7290-10-3	7290-10-5	10	10	10	
7290-12-1	7290-12-2	7290-12-3	7290-12-5	12	12	12	







SWIVEL SEAL HOSE ENDS FOR PTFE HOSE CRIMP STYLE



7220SERIES	CLR/BLUE 120°	CLR/BLK 120°	CLR/RED 120°	CLR/CLR 120°	HOSE END	HOSE SIZE	ADPTR. SIZE
	7220-04-1	7220-04-2	7220-04-3	7220-04-5	4	4	4
	7220-06-1	7220-06-2	7220-06-3	7220-06-5	6	6	6
	7220-08-1	7220-08-2	7220-08-3	7220-08-5	8	8	8
	7220-10-1	7220-10-2	7220-10-3	7220-10-5	10	10	10
	7220-12-1	7220-12-2	7220-12-3	7220-12-5	12	12	12

7250SERIES	CLR/BLUE 150°	CLR/BLK 150°	CLR/RED 150°	CLR/CLR 150°	HOSE END	HOSE SIZE	ADPTR. SIZE
	7250-04-1	7250-04-2	7250-04-3	7250-04-5	4	4	4
	7250-06-1	7250-06-2	7250-06-3	7250-06-5	6	6	6
	7250-08-1	7250-08-2	7250-08-3	7250-08-5	8	8	8
	7250-10-1	7250-10-2	7250-10-3	7250-10-5	10	10	10
	7250-12-1	7250-12-2	7250-12-3	7250-12-5	12	12	12

7280SERIES	CLR/BLUE 180°	CLR/BLK 180°	CLR/RED 180°	CLR/CLR 180°	HOSE END	HOSE SIZE	ADPTR. SIZE
	7280-04-1	7280-04-2	7280-04-3	7280-04-5	4	4	4
	7280-06-1	7280-06-2	7280-06-3	7280-06-5	6	6	6
	7280-08-1	7280-08-2	7280-08-3	7280-08-5	8	8	8
	7280-10-1	7280-10-2	7280-10-3	7280-10-5	10	10	10
	7280-12-1	7280-12-2	7280-12-3	7280-12-5	12	12	12

CRIMP REPLACEMENT COLLARS FOR PTFE HOSE



PART#	DESCRIPTION
7200-04-0	-04 Zinc Plated Replacement Crimp Collars for PTFE Hose 6/pkg
7200-06-0	-06 Zinc Plated Replacement Crimp Collars for PTFE Hose 6/pkg
7200-08-0	-08 Zinc Plated Replacement Crimp Collars for PTFE Hose 6/pkg
7200-10-0	-10 Zinc Plated Replacement Crimp Collars for PTFE Hose 6/pkg
7200-12-0	-12 Zinc Plated Replacement Crimp Collars for PTFE Hose 6/pkg
7200-04-9	-04 Black Replacement Crimp Collars for PTFE Hose 6/pkg
7200-06-9	-06 Black Replacement Crimp Collars for PTFE Hose 6/pkg
7200-08-9	-08 Black Replacement Crimp Collars for PTFE Hose 6/pkg
7200-10-9	-10 Black Replacement Crimp Collars for PTFE Hose 6/pkg
7200-12-9	-12 Black Replacement Crimp Collars for PTFE Hose 6/pkg



PUSH LOCK HOSE ENDS



The RHP 2000 Series Push Lock Hose Ends are cut from 6061 T-6 aluminum on CNC machines to provide superior thread strength and leak proof performance. Our custom designed hose nipples and unique aluminum collars allow quick and easy assembly and smooth snag-free performance. RHP's famous hand polishing and color consistent anodizing add the final touch of quality that professional engine builders have come to expect from Redhorse.

RHP 2000 Series fittings are engineered for use with our RHP 401 and 402 Series high performance push lock hoses. Not to be used with standard braided racing hoses. For best results assemble with the aide of RHP Assembly Lube and 420 Series Push Lock Hose Clamps and the 5420 Series push lock hose pliers.

BLUE STRAIGHT	BLACK STRAIGHT	CLEAR STRAIGHT	HOSE END	HOSE SIZE	ADAPTER SIZE	2000SERIES
---------------	----------------	----------------	----------	-----------	--------------	------------

2000-04-1	2000-04-2	2000-04-5	4	1/4	4
2000-06-1	2000-06-2	2000-06-5	6	3/8	6
2000-08-1	2000-08-2	2000-08-5	8	1/2	8
2000-10-1	2000-10-2	2000-10-5	10	5/8	10
2000-12-1	2000-12-2	2000-12-5	12	3/4	12



BLUE 45°	BLACK 45°	CLEAR 45°	HOSE END	HOSE SIZE	ADAPTER SIZE	2045SERIES
----------	-----------	-----------	----------	-----------	--------------	------------

2045-04-1	2045-04-2	2045-04-5	4	1/4	4
2045-06-1	2045-06-2	2045-06-5	6	3/8	6
2045-08-1	2045-08-2	2045-08-5	8	1/2	8
2045-10-1	2045-10-2	2045-10-5	10	5/8	10
2045-12-1	2045-12-2	2045-12-5	12	3/4	12



BLUE 90°	BLACK 90°	CLEAR 90°	HOSE END	HOSE SIZE	ADAPTER SIZE	2090SERIES
----------	-----------	-----------	----------	-----------	--------------	------------

2090-04-1	2090-04-2	2090-04-5	4	1/4	4
2090-06-1	2090-06-2	2090-06-5	6	3/8	6
2090-08-1	2090-08-2	2090-08-5	8	1/2	8
2090-10-1	2090-10-2	2090-10-5	10	5/8	10
2090-12-1	2090-12-2	2090-12-5	12	3/4	12



WHAT THEY'RE SAYING...

"We have been working with Redhorse Performance for several years. They are a great company to work with, they have superb products and most importantly, they stand behind their products. Customer service and support is second to none. Just a bunch of great people to work with. We will be with RHP for life."

- Wayne and Larry Gibson
Hoot's Rod and Customs
El Mirage, AZ



PUSH LOCK HOSE ENDS



2120SERIES	BLUE 120°	BLACK 120°	CLEAR 120°	HOSE END	HOSE SIZE	ADAPTER SIZE
------------	-----------	------------	------------	----------	-----------	--------------

2120-04-1	2120-04-2	2120-04-5	4	1/4	4
2120-06-1	2120-06-2	2120-06-5	6	3/8	6
2120-08-1	2120-08-2	2120-08-5	8	1/2	8
2120-10-1	2120-10-2	2120-10-5	10	5/8	10
2120-12-1	2120-12-2	2120-12-5	12	3/4	12



2150SERIES	BLUE 150°	BLACK 150°	CLEAR 150°	HOSE END	HOSE SIZE	ADAPTER SIZE
------------	-----------	------------	------------	----------	-----------	--------------

2150-04-1	2150-04-2	2150-04-5	4	1/4	4
2150-06-1	2150-06-2	2150-06-5	6	3/8	6
2150-08-1	2150-08-2	2150-08-5	8	1/2	8
2150-10-1	2150-10-2	2150-10-5	10	5/8	10
2150-12-1	2150-12-2	2150-12-5	12	3/4	12



2180SERIES	BLUE 180°	BLACK 180°	CLEAR 180°	HOSE END	HOSE SIZE	ADAPTER SIZE
------------	-----------	------------	------------	----------	-----------	--------------

2180-04-1	2180-04-2	2180-04-5	4	1/4	4
2180-06-1	2180-06-2	2180-06-5	6	3/8	6
2180-08-1	2180-08-2	2180-08-5	8	1/2	8
2180-10-1	2180-10-2	2180-10-5	10	5/8	10
2180-12-1	2180-12-2	2180-12-5	12	3/4	12



PUSH LOCK HOSE CLAMPS



PART#	DESCRIPTION
420-04	-04 Stainless Steel Push Lock Hose Clamp 2pcs/Package
420-06	-06 Stainless Steel Push Lock Hose Clamp 2pcs/Package
420-08	-08 Stainless Steel Push Lock Hose Clamp 2pcs/Package
420-10	-10 Stainless Steel Push Lock Hose Clamp 2pcs/Package
420-12	-12 Stainless Steel Push Lock Hose Clamp 2pcs/Package

200 SERIES HOSE

The RHP 200 Series Hose is a true double braided stainless hose that uses the highest quality stainless wire available. Our 200 Series Hose uses a temperature resistant seamless CPE synthetic tube liner. Redhorse 200 series hose offers excellent protection from abrasion while maintaining maximum pressure capabilities. Redhorse Performance 200 Series Hose is available in precut lengths (3 ft., 6 ft., 10 ft., and 20 ft.) Please contact your local distributor for more details.

***This hose is not designed for use on high pressure power steering lines and is not to be used for high pressure hydraulic applications.**

200SERIES - STAINLESS BRAIDED HOSE

PART #	BORE SIZE		BRAID OD		WORKING PRES.		BURST PRES.		VACUUM RATING		WEIGHT		MIN BEND RADIUS		TEMPERATURE RANGE			
	INCH	MM	INCH	MM	BAR	PSI	BAR	PSI	IN. HG	KG/M	LB/FT	INCH	MM	MIN °C	MIN °F	MAX °C	MAX °F	
200 04 1	7/32	5.56	0.44	11.13	69	1500	414	6000	25	0.178	0.120	2.00	50.8	40°C	40°F	125°C	257°F	
200 06 1	11/32	8.73	0.55	13.89	69	1500	414	6000	25	0.221	0.149	2.50	63.5	40°C	40°F	125°C	257°F	
200 08 1	7/16	11.11	0.64	16.28	69	1000	345	5000	25	0.283	0.190	3.50	88.9	40°C	40°F	125°C	257°F	
200 10 1	9/16	14.29	0.80	20.24	69	1000	345	5000	25	0.334	0.224	4.00	101.6	40°C	40°F	125°C	257°F	
200 12 1	11/16	17.46	0.94	23.82	69	1000	259	3750	22	0.446	0.300	4.50	114.3	40°C	40°F	125°C	257°F	
200 16 1	7/8	22.23	1.16	29.36	52	750	172	2500	22	0.610	0.410	5.50	139.7	40°C	40°F	125°C	257°F	

COMING IN 2016! STAINLESS STEEL INTERNAL SUPPORT COILS

PART NO.	DESCRIPTION	222SERIES
222-08	Inner Support Spring	The RHP 222 Series flat wound stainless steel internal support coils provide extra support and peace of mind for the most demanding high vacuum applications such as dry sump systems. Sold by the foot.
222-10	Inner Support Spring	
222-12	Inner Support Spring	
222-16	Inner Support Spring	

205 SERIES PREMIUM RACE HOSE

The RHP 205 Series Hose is our top of the line, double braided stainless steel hose. The RHP 205 Series Hose features a unique dual layer inner tube with a layer of Epichlorohydrin (ECO) and a layer of Fluoroelastomer (FKM) for unrivaled fuel compatibility. RHP 205 Series Hose will keep pace with your racing whether you are using e85, methanol or regular fuel from the pump. As always, the RHP 205 Series Hose is constructed with our industry exclusive bonding process. With a double stainless core, advanced inner-tube you can be assured that you are getting the total package with the RHP 205 Series. Available in size AN -04 through -12. Hose comes precut in 3 ft., 6 ft., 10ft., 20ft and 50 ft. lengths (50 foot lengths only available in sizes -04 through -10).

*** This hose is not designed for use on high pressure power steering lines and is not to be used for high pressure hydraulic application.**

205SERIES - STAINLESS BRAIDED HOSE

PART #	BORE SIZE		BRAID OD		WORKING PRES.		BURST PRES.		VACUUM RATING		WEIGHT		MIN BEND RADIUS		TEMPERATURE RANGE			
	INCH	MM	INCH	MM	BAR	PSI	BAR	PSI	IN. HG	KG/M	LB/FT	INCH	MM	MIN °C	MIN °F	MAX °C	MAX °F	
205 04 1	7/32	5.56	0.44	11.17	69	1500	414	6000	25	0.178	0.120	2.00	50.8	40°C	40°F	150°C	302°F	
205 06 1	11/32	8.73	0.56	14.22	69	1500	414	6000	25	0.221	0.149	2.50	63.5	40°C	40°F	150°C	302°F	
205 08 1	7/16	11.11	0.67	17.02	69	1000	345	5000	25	0.283	0.190	3.50	88.9	40°C	40°F	150°C	302°F	
205 10 1	9/16	14.29	0.82	20.83	69	1000	345	5000	25	0.334	0.224	4.00	101.6	40°C	40°F	150°C	302°F	
205 12 1	11/16	17.46	0.96	24.38	69	1000	259	3750	22	0.446	0.300	4.50	114.3	40°C	40°F	150°C	302°F	

230 SERIES HOSE

The RHP 230 Series Hose is a black nylon braided hose with a unique half layer of high quality braided stainless hidden beneath. Our 230 Series Hose uses a temperature resistant seamless CPE synthetic tube liner. With a stainless core you can be assured that you get the best of both worlds: an aesthetically pleasing hose with the protection of stainless, all while providing a pressure rating unsurpassed by the competition. Redhorse Performance 230 Series Hose is available precut lengths (3 ft., 6 ft., 10 ft., and 20 ft.) Please contact your local distributor for more details.

***This hose is not designed for use on high pressure power steering lines and is not to be used for high pressure hydraulic applications.**

Custom assemblies available upon request. Please contact your local distributor for details.

230SERIES - NYLON BRAIDED STAINLESS CORE HOSE

PART #	BORE SIZE		BRAID OD		WORKING PRES.		BURST PRES.		VACUUM RATING		WEIGHT		MIN BEND RADIUS		TEMPERATURE RANGE			
	INCH	MM	INCH	MM	BAR	PSI	BAR	PSI	IN. HG	KG/M	LB/FT	INCH	MM	MIN °C	MIN °F	MAX °C	MAX °F	
230 04 1	7/32	5.56	0.44	11.17	34	500	138	2000	20	0.109	0.073	2.00	50.8	40°C	40°F	125°C	257°F	
230 06 1	11/32	8.73	0.56	14.22	34	500	138	2000	20	0.132	0.089	2.50	63.5	40°C	40°F	125°C	257°F	
230 08 1	7/16	11.11	0.67	17.02	34	500	138	2000	20	0.165	0.111	3.50	88.9	40°C	40°F	125°C	257°F	
230 10 1	9/16	14.29	0.82	20.83	34	500	138	2000	20	0.293	0.197	4.00	101.6	40°C	40°F	125°C	257°F	
230 12 1	11/16	17.46	0.96	24.38	24	350	97	1400	20	0.372	0.250	4.50	114.3	40°C	40°F	125°C	257°F	
230 16 1	7/8	22.23	1.15	29.2	24	350	97	1400	20	0.476	0.320	5.5	139.7	40°C	40°F	125°C	257°F	

235 SERIES PREMIUM RACE HOSE

The RHP 235 Series Hose is our top of the line, black nylon braided hose with a half layer of high quality braided stainless wire hidden beneath. The RHP 235 Series Hose features a unique dual layer inner tube with a layer of Epichlorohydrin (ECO) and a layer of Fluoroelastomer (FKM) for unrivaled fuel compatibility. RHP 235 Series Hose will keep pace with your racing whether you are using e85, methanol or regular fuel from the pump. As always, the RHP 235 Series Hose is constructed with our industry exclusive bonding process. With a stainless core, advanced inner-tube and nylon outer layer you can be assured that you are getting the total package with the RHP 235 Series. Available in size AN -04 through -12. Hose comes precut in 3 ft., 6 ft., 10ft., 20ft and 50 ft. lengths (50 foot lengths only available in sizes -04 through -10).

*** This hose is not designed for use on high pressure power steering lines and is not to be used for high pressure hydraulic application.**

235SERIES - NYLON BRAIDED STAINLESS CORE HOSE

PART #	BORE SIZE		BRAID OD		WORKING PRES.		BURST PRES.		VACUUM RATING		WEIGHT		MIN BEND RADIUS		TEMPERATURE RANGE			
	INCH	MM	INCH	MM	BAR	PSI	BAR	PSI	IN. HG	KG/M	LB/FT	INCH	MM	MIN °C	MIN °F	MAX °C	MAX °F	
235 04 1	7/32	5.56	0.44	11.17	34	500	138	2000	20	0.135	0.091	2.00	50.8	40°C	40°F	150°C	302°F	
235 06 1	11/32	8.73	0.56	14.22	34	500	138	2000	20	0.190	0.128	2.50	63.5	40°C	40°F	150°C	302°F	
235 08 1	7/16	11.11	0.67	17.02	34	500	138	2000	20	0.238	0.116	3.50	88.9	40°C	40°F	150°C	302°F	
235 10 1	9/16	14.29	0.82	20.83	34	500	138	2000	20	0.299	0.201	4.00	101.6	40°C	40°F	150°C	302°F	
235 12 1	11/16	17.46	0.96	24.38	24	350	97	1400	20	0.223	0.150	4.50	114.3	40°C	40°F	150°C	302°F	



PTFE HOSE



302 and 303 SERIES SERIES PREMIUM RACE HOSE

Harness the power of PTFE with the all new RHP 302 and 303 series PTFE high performance hoses. Engineered for use with our 1200 Series (pages 12-13) and 7200 Series hose ends (pages 16-17), the RHP 302 and 303 series hoses are equipped to handle extremely high pressure and are fully compatible with all types of fuel. The 303 Series hose features a custom designed smooth bore dual-layer conductive core PTFE inner-tube that is covered by a stainless steel outer braid. Our 302 Series hose features the same construction as our 303 Series hose but with an additional layer of black, fuel-resistant wrap which protects against braid wear and looks great when paired with our hand polished fittings.

302SERIES - PTFE HOSE - BLACK - COMING IN 2016!

PART #	BORE SIZE		COVER OD		WORKING PRES.		BURST PRES.		MIN BEND RADIUS		TEMPERATURE RANGE	
	INCH	MM	INCH	MM	BAR	PSI	BAR	PSI	INCH	MM	MIN °F	MAX °F
302 04 1	0.125	3.2	0.305	7.7	200	3000	827	12000	4.0	100	65°F	450°F
302 06 1	0.312	7.9	0.490	12.4	170	2500	690	10000	6.5	165	65°F	450°F
302 08 1	0.405	10.3	0.585	14.9	140	2000	550	8000	8.5	220	65°F	450°F
302 10 1	0.500	12.7	0.688	17.5	100	1500	410	6000	9.5	240	65°F	450°F
302 12 1	0.625	15.9	0.823	20.9	80	1200	330	4800	10.0	260	65°F	450°F

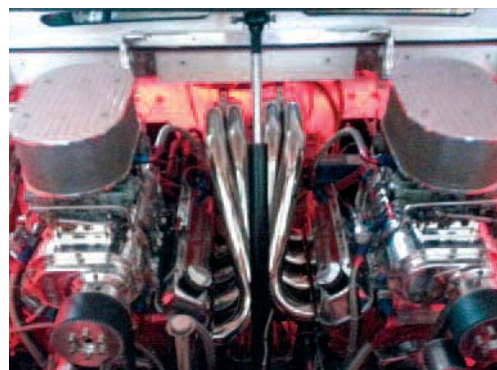
303SERIES - PTFE HOSE - STAINLESS - COMING IN 2016!

PART #	BORE SIZE		BRAID OD		WORKING PRES.		BURST PRES.		MIN BEND RADIUS		TEMPERATURE RANGE	
	INCH	MM	INCH	MM	BAR	PSI	BAR	PSI	INCH	MM	MIN °F	MAX °F
303 04 1	0.125	3.2	0.264	6.7	200	3000	827	12000	4.0	100	65°F	450°F
303 06 1	0.312	7.9	0.449	11.4	170	2500	690	10000	6.5	165	65°F	450°F
303 08 1	0.405	10.3	0.547	13.9	140	2000	550	8000	8.5	220	65°F	450°F
303 10 1	0.500	12.7	0.650	16.5	100	1500	410	6000	9.5	240	65°F	450°F
303 12 1	0.625	15.9	0.783	19.9	80	1200	330	4800	10.0	260	65°F	450°F

WHAT THEY'RE SAYING...

"Lake Michigan can be very tough on boats. Even on a 38' Cigarette, parts are put to the test from constant pounding. Years of Lake Michigan boating, (2) 900HP engines and at no time has a Redhorse Performance fitting let me down. Great pricing, fast shipping and top notch product. I recommend Redhorse to everyone."

- Dan Baloun
North Aurora, IL



PUSH LOCK / NITROUS OXIDE HOSE



401 and 402 SERIES PUSH LOCK RACE HOSE

Hit the sweet spot between ease of installation and high performance with the RHP 401 and 402 series hoses. Engineered for use with our 2000 series hose ends (pages 18-19), our 401 and 402 series hoses deliver great performance while being assembled in minutes. RHP 401 and 402 series hoses contain a fully fuel compatible inner tube, a braided layer of tough nylon mesh and a smooth outer cover. With a max working pressure of 300psi, the RHP 401 and 402 series hoses are not recommended for high pressure applications or suction systems.



402SERIES - PUSH LOCK HOSE - BLACK - NEW!

PART #	BORE SIZE		O.D. SIZE		WORKING PRES.		BURST PRES.		VACUUM RATING	WEIGHT		MIN BEND RADIUS		TEMPERATURE RANGE			
	INCH	MM	INCH	MM	BAR	PSI	BAR	PSI		IN. HG	KG/M	LB/FT	INCH	MM	MIN °C	MIN °F	MAX °C
402 04 1	1/4	6.35	0.51	12.90	24	350	100	1400	27	0.121	0.081	3.00	76	40°C	40°F	100°C	212°F
402 06 1	3/8	9.53	0.63	15.90	20	300	83	1200	27	0.201	0.135	3.00	76	40°C	40°F	100°C	212°F
402 08 1	1/2	12.7	0.78	19.80	20	300	83	1200	27	0.238	0.171	5.00	127	40°C	40°F	100°C	212°F
402 10 1	5/8	15.88	0.91	23.10	20	300	69	1000	17	0.316	0.212	6.00	152	40°C	40°F	100°C	212°F
402 12 1	3/4	19.05	1.05	26.70	20	300	69	1000	17	0.466	0.313	7.00	178	40°C	40°F	100°C	212°F

401SERIES - PUSH LOCK HOSE - BLUE - COMING IN 2016!

PART #	BORE SIZE		O.D. SIZE		WORKING PRES.		BURST PRES.		VACUUM RATING	WEIGHT		MIN BEND RADIUS		TEMPERATURE RANGE			
	INCH	MM	INCH	MM	BAR	PSI	BAR	PSI		IN. HG	KG/M	LB/FT	INCH	MM	MIN °C	MIN °F	MAX °C
401 04 1	1/4	6.35	0.51	12.90	24	350	100	1400	27	0.121	0.081	3.00	76	40°C	40°F	100°C	212°F
401 06 1	3/8	9.53	0.63	15.90	20	300	83	1200	27	0.201	0.135	3.00	76	40°C	40°F	100°C	212°F
401 08 1	1/2	12.7	0.78	19.80	20	300	83	1200	27	0.238	0.171	5.00	127	40°C	40°F	100°C	212°F
401 10 1	5/8	15.88	0.91	23.10	20	300	69	1000	17	0.316	0.212	6.00	152	40°C	40°F	100°C	212°F
401 12 1	3/4	19.05	1.05	26.70	20	300	69	1000	17	0.466	0.313	7.00	178	40°C	40°F	100°C	212°F

900 SERIES NITROUS SYSTEM HOSE ASSEMBLIES

The RHP 900 Series Nitrous System Hose Assemblies are constructed using PTFE tubing with a rugged stainless steel outer-braid. All RHP 900 Series assemblies are hydraulically crimped to exacting standards to guarantee performance and safety. All lines consist of a straight AN female hose ends on each side. Available in -04AN and -06AN.



900SERIES - NITROUS OXIDE HOSE - NEW!

LENGTH	-04		-04		-06		-06	
	BLUE ENDS	RED ENDS	BLACK ENDS	BLUE ENDS	RED ENDS	BLACK ENDS	RED ENDS	
12"	900 04 12 1	900 04 12 3	900 04 12 2	900 06 12 1	900 06 12 3	900 06 12 2		
18"	900 04 18 1	900 04 18 3	900 04 18 2	900 06 18 1	900 06 18 3	900 06 18 2		
2'	900 04 24 1	900 04 24 3	900 04 24 2	900 06 24 1	900 06 24 3	900 06 24 2		
3'	900 04 36 1	900 04 36 3	900 04 36 2	900 06 36 1	900 06 36 3	900 06 36 2		
4'	900 04 48 1	900 04 48 3	900 04 48 2	900 06 48 1	900 06 48 3	900 06 48 2		
5'	900 04 60 1	900 04 60 3	900 04 60 2	900 06 60 1	900 06 60 3	900 06 60 2		
6'	900 04 72 1	N/A	900 04 72 2	900 06 72 1	N/A	900 06 72 2		
8'	900 04 84 1	N/A	900 04 84 2	900 06 84 1	N/A	900 06 84 2		
10'	900 04 120 1	900 04 120 3	900 04 120 2	900 06 120 1	900 06 120 3	900 06 120 2		
12'	900 04 144 1	900 04 144 3	900 04 144 2	900 06 144 1	900 06 144 3	900 06 144 2		
14'	900 04 168 1	N/A	900 04 168 2	900 06 168 1	N/A	900 06 168 2		
16'	900 04 192 1	N/A	900 04 192 2	900 06 192 1	N/A	900 06 192 2		
20'	900 04 240 1	N/A	900 04 240 2	900 06 240 1	N/A	900 06 240 2		

AN TO OEM FUEL LINE ADAPTERS

BLUE STRAIGHT	BLACK STRAIGHT	RED STRAIGHT	CLEAR STRAIGHT	AN	OEM	880SERIES
880-06-05-1	880-06-05-2	880-06-05-3	880-06-05-5	6	5/16	
880-06-06-1	880-06-06-2	880-06-06-3	880-06-06-5	6	3/8	
880-08-06-1	880-08-06-2	880-08-06-3	880-08-06-5	8	3/8	



NEW!
FUEL LINE CONNECTORS

PART#	DESCRIPTION
880-05-02	5/16" Retainer clear - 5pcs/pkg
880-06-02	3/8" Retainer blue - 5pcs/pkg

AN MALE TO SAE QUICK DISCONNECT FEMALE

BLUE STRAIGHT	BLACK STRAIGHT	CLEAR STRAIGHT	AN	OEM	881SERIES
881-06-04-1	881-06-04-2	881-06-04-5	6	1/4	
881-06-05-1	881-06-05-2	881-06-05-5	6	5/16	
881-06-06-1	881-06-06-2	881-06-06-5	6	3/8	
881-08-06-1	881-08-06-2	881-08-06-5	8	3/8	



AN MALE TO PUSH ON EFI - NEW!

BLUE STRAIGHT	BLACK STRAIGHT	CLEAR STRAIGHT	AN	OEM	811SERIES
811-06-05-1	811-06-05-2	811-06-05-5	6	5/16	
811-06-06-1	811-06-06-2	811-06-06-5	6	3/8	



AN MALE O-RING PORT TO PUSH ON EFI - NEW!

BLUE STRAIGHT	BLACK STRAIGHT	CLEAR STRAIGHT	AN	OEM	812SERIES
812-06-05-1	812-06-05-2	812-06-05-5	6	5/16	
812-06-06-1	812-06-06-2	812-06-06-5	6	3/8	



NPT TO PUSH ON EFI - NEW!

BLUE STRAIGHT	BLACK STRAIGHT	CLEAR STRAIGHT	NPT	OEM	813SERIES
813-06-05-1	813-06-05-2	813-06-05-5	6	5/16	
813-06-06-1	813-06-06-2	813-06-06-5	6	3/8	



EFI SAE FEMALE QUICK-CONNECT HOSE ENDS

The RHP 8000 series hose ends are designed to connect to OEM hard lines without the use of an adapter. As always, the RHP 8000 series hose ends are all hand polished, CNC machined and fully reusable for unrivaled looks, performance and versatility. RHP 8000 Series Hose Ends are engineered for use with RHP Series 200, 205, 230 and 235 hoses. For best assembly results use in conjunction with the RHP Assembly Tool, RHP AN Wrenches, RHP Vise Jaws and RHP Assembly Lube.



8000SERIES		SAE QUICK DISCONNECT FEMALE - STRAIGHT - NEW!		
RED/BLUE STRAIGHT	BLACK STRAIGHT	CLEAR STRAIGHT	AN	SIZE
8000-06-05-1	8000-06-05-2	8000-06-05-5	6	5/16
8000-06-06-1	8000-06-06-2	8000-06-06-5	6	3/8
8000-08-06-1	8000-08-06-2	8000-08-06-5	8	3/8



8045SERIES		SAE QUICK DISCONNECT FEMALE - 45°		
RED/BLUE 45°	BLACK 45°	CLEAR 45°	AN	SIZE
8045-06-05-1	8045-06-05-2	8045-06-05-5	6	5/16
8045-06-06-1	8045-06-06-2	8045-06-06-5	6	3/8
8045-08-06-1	8045-08-06-2	8045-08-06-5	8	3/8



8090SERIES		SAE QUICK DISCONNECT FEMALE - 90°		
RED/BLUE 90°	BLACK 90°	CLEAR 90°	AN	SIZE
8090-06-05-1	8090-06-05-2	8090-06-05-5	6	5/16
8090-06-06-1	8090-06-06-2	8090-06-06-5	6	3/8
8090-08-06-1	8090-08-06-2	8090-08-06-5	8	3/8



8180SERIES		SAE QUICK DISCONNECT FEMALE - 180°		
RED/BLUE 180°	BLACK 180°	CLEAR 180°	AN	SIZE
8180-06-05-1	8180-06-05-2	8180-06-05-5	6	5/16
8180-06-06-1	8180-06-06-2	8180-06-06-5	6	3/8
8180-08-06-1	8180-08-06-2	8180-08-06-5	8	3/8

ASSEMBLY TOOL - NEW!

Assemble your next hose end in a matter of minutes with the help of the all new RHP Assembly Tool. We know it looks a little unusual, but this handy tool has been our internal secret weapon for years. Invented in-house to help our own employees quickly and reliably assemble scratch-free lines, the RHP assembly tool will save you LOTS of time. The RHP Assembly tool comes with an adjustable die and works for all RHP hose ends -04 through -16. Detailed assembly instructions are available online and on page 6 of this catalog.



Part#	DESCRIPTION	5416SERIES
5416-1	Redhorse Performance Assembly Tool	

AN WRENCHES

RHP AN Wrenches are CNC machined from 6061 aluminum. Custom made to fit the exact nut and socket dimensions of RHP fittings, the RHP AN wrenches make it easy to correctly assemble RHP hose ends without damaging their beautiful finish.



Part#	DESCRIPTION	5468SERIES
5468-04-2	Double-ended aluminum AN wrench -04 B-Nut to -06 B-Nut - black	
5468-06-5	Double-ended aluminum AN wrench -04 Socket to -06 Socket - silver	
5468-08-2	Double-ended aluminum AN wrench -08 B-Nut to -10 B-Nut - black	
5468-10-5	Double-ended aluminum AN wrench -08 Socket to -10 Socket - silver	
5468-12-2	Double-ended aluminum AN wrench -12 B-Nut to -16 B-Nut - black	
5468-16-5	Double-ended aluminum AN wrench -12 Socket to -16 Socket - silver	
5468-1	Double-ended aluminum AN wrench -04 to -16 - silver & black complete set includes carrying case	

WISE JAWS

Make assembly easier and protect the finish of your fittings with these handy aluminum vise jaws. Magnetized for easy storage.



Part#	DESCRIPTION	568SERIES
568-2	4" Black Aluminum Vise Jaws	
568-5	4" Clear Anodized Aluminum Vise Jaws	

ASSEMBLY LUBE - NEW!

Part#	DESCRIPTION	1111SERIES
1111-12	8.45oz Bottle of RHP Assembly Lube	



PUSH LOCK TOOL - NEW!

Part#	DESCRIPTION	5420SERIES
5420-1	Push Lock Hose Clamp Pliers	



Redhorse Performance now offers the best solution to working with hard line to soft hose – the RHP AN Adapters. RHP Hard Line Adapters make the transition from hard line tube to braided stainless steel or nylon hose a snap. Each fitting features our Swivel Seal construction cut on our CNC machine turning centers from 6061 T-6 aluminum and assembled in a white glove environment. Our unique design provides quick assembly and easy alignment on the final application. Also, available below, are our high quality AN Tube Nuts and Sleeves. You will need a 37° flare tool to flare hard line – and our AN adapters to make the connection. All parts feature RHP’s exclusive color consistent anodizing and polishing to add the final touch of quality and protection that is Redhorse Performance.



FEMALE AN TUBE ADAPTERS

3000SERIES	RED/BLUE STRAIGHT	BLK STRAIGHT	HOSE END	LINE SIZE
	3000-06-06-1	3000-06-06-2	6	3/8
	3000-08-08-1	3000-08-08-2	8	1/2



MALE AN TUBE ADAPTERS

3100SERIES	RED/BLUE STRAIGHT	BLK STRAIGHT	HOSE END	LINE SIZE
	3100-06-06-1	3100-06-06-2	6	3/8
	3100-08-08-1	3100-08-08-2	8	1/2



AN ALUMINUM TUBE NUTS

818SERIES	BLUE STRAIGHT	BLK STRAIGHT	CLR STRAIGHT	HOSE END	LINE SIZE	QUANTITY PER PACKAGE
	818-03-1	818-03-2	818-03-5	3	3/16	6
	818-04-1	818-04-2	818-04-5	4	1/4	6
	818-06-1	818-06-2	818-06-5	6	3/8	2
	818-08-1	818-08-2	818-08-5	8	1/2	2
	818-10-1	818-10-2	818-10-5	10	5/8	-
	818-12-1	818-12-2	818-12-5	12	3/4	-
	818-16-1	818-16-2	818-16-5	16	1	-



AN ALUMINUM TUBE SLEEVES

819SERIES	BLUE STRAIGHT	BLK STRAIGHT	CLR STRAIGHT	HOSE END	LINE SIZE	QUANTITY PER PACKAGE
	819-03-1	819-03-2	819-03-5	3	3/16	6
	819-04-1	819-04-2	819-04-5	4	1/4	6
	819-06-1	819-06-2	819-06-5	6	3/8	2
	819-08-1	819-08-2	819-08-5	8	1/2	2
	819-10-1	819-10-2	819-10-5	10	5/8	-
	819-12-1	819-12-2	819-12-5	12	3/4	-
	819-16-1	819-16-2	819-16-5	16	1	-



Y ADAPTER AN MALE TO AN MALE

BLUE	BLK	CLEAR	SINGLE SIDED	DUAL	930SERIES
930-04-03-1	930-04-03-2	930-04-03-5	4	3	
930-04-04-1	930-04-04-2	930-04-04-5	4	4	
930-06-04-1	930-06-04-2	930-06-04-5	6	4	
930-06-06-1	930-06-06-2	930-06-06-5	6	6	
930-08-06-1	930-08-06-2	930-08-06-5	8	6	
930-08-08-1	930-08-08-2	930-08-08-5	8	8	
930-10-08-1	930-10-08-2	930-10-08-5	10	8	
930-10-10-1	930-10-10-2	930-10-10-5	10	10	
930-12-10-1	930-12-10-2	930-12-10-5	12	10	



AN TO NPT ADAPTER STRAIGHT MALE W/NPT PORT

BLUE	BLACK	CLEAR	AN	NPT	PORT	9194SERIES
9194-06-04-1	9194-06-04-2	9194-06-04-5	6	1/4	1/8	
9194-06-06-1	9194-06-06-2	9194-06-06-5	6	3/8	1/8	
9194-08-04-1	9194-08-04-2	9194-08-04-5	8	1/4	1/8	
9194-08-06-1	9194-08-06-2	9194-08-06-5	8	3/8	1/8	



AN MALE TO NPT STRAIGHT ADAPTER

BLUE	BLACK	CLEAR	AN	NPT	816SERIES
816-03-02-1	816-03-02-2	816-03-02-5	3	1/8	
816-03-04-1	816-03-04-2	816-03-04-5	3	1/4	
816-04-02-1	816-04-02-2	816-04-02-5	4	1/8	
816-04-04-1	816-04-04-2	816-04-04-5	4	1/4	
816-04-06-1	816-04-06-2	816-04-06-5	4	3/8	
816-06-02-1	816-06-02-2	816-06-02-5	6	1/8	
816-06-04-1	816-06-04-2	816-06-04-5	6	1/4	
816-06-06-1	816-06-06-2	816-06-06-5	6	3/8	
816-06-08-1	816-06-08-2	816-06-08-5	6	1/2	
816-08-04-1	816-08-04-2	816-08-04-5	8	1/4	
816-08-06-1	816-08-06-2	816-08-06-5	8	3/8	
816-08-08-1	816-08-08-2	816-08-08-5	8	1/2	
816-08-12-1	816-08-12-2	816-08-12-5	8	3/4	
816-10-06-1	816-10-06-2	816-10-06-5	10	3/8	
816-10-08-1	816-10-08-2	816-10-08-5	10	1/2	
816-10-12-1	816-10-12-2	816-10-12-5	10	3/4	
816-12-08-1	816-12-08-2	816-12-08-5	12	1/2	
816-12-12-1	816-12-12-2	816-12-12-5	12	3/4	
816-12-16-1	816-12-16-2	816-12-16-5	12	1	
816-16-12-1	816-16-12-2	816-16-12-5	16	3/4	
816-16-16-1	816-16-16-2	816-16-16-5	16	1	



AN TO METRIC ADAPTER

BLUE	BLACK	CLEAR	AN	METRIC	8161SERIES
8161-04-10-1	8161-04-10-2	8161-04-10-5	4	10x1.0	
8161-06-10-1	8161-06-10-2	8161-06-10-5	6	10x1.0	
8161-06-12-1	8161-06-12-2	8161-06-12-5	6	12x1.5	
8161-06-14-1	8161-06-14-2	8161-06-14-5	6	14x1.5	
8161-06-16-1	8161-06-16-2	8161-06-16-5	6	16x1.5	
8161-06-18-1	8161-06-18-2	8161-06-18-5	6	18x1.5	
8161-08-10-1	8161-08-10-2	8161-08-10-5	8	10x1.0	
8161-08-12-1	8161-08-12-2	8161-08-12-5	8	10x1.0	
8161-08-16-1	8161-08-16-2	8161-08-16-5	8	16x1.5	
8161-08-18-1	8161-08-18-2	8161-08-18-5	8	18x1.5	
8161-10-12-1	8161-10-12-2	8161-10-12-5	10	12x1.5	
8161-10-16-1	8161-10-16-2	8161-10-16-5	10	16x1.5	
8161-10-18-1	8161-10-18-2	8161-10-18-5	10	18x1.5	



AN PORT ADAPTER WITH HIGH FLOW RADIUS

920SERIES	BLUE	BLK	CLEAR	MALE SIDE	O-RING SIDE
	920-04-04-1	920-04-04-2	920-04-04-5	4	4
	920-06-06-1	920-06-06-2	920-06-06-5	6	6
	920-06-08-1	920-06-08-2	920-06-08-5	6	8
	920-06-10-1	920-06-10-2	920-06-10-5	6	10
	920-08-06-1	920-08-06-2	920-08-06-5	8	6
	920-08-08-1	920-08-08-2	920-08-08-5	8	8
	920-08-10-1	920-08-10-2	920-08-10-5	8	10
	920-10-08-1	920-10-08-2	920-10-08-5	10	8
	920-10-10-1	920-10-10-2	920-10-10-5	10	10
	920-10-12-1	920-10-12-2	920-10-12-5	10	12
	920-12-10-1	920-12-10-2	920-12-10-5	12	10
	920-12-12-1	920-12-12-2	920-12-12-5	12	12
	920-16-12-1	920-16-12-2	920-16-12-5	16	12
	920-16-16-1	920-16-16-2	920-16-16-5	16	16



AN MALE TO NPT MALE 90° ADAPTER

822SERIES	BLUE	BLACK	CLEAR	AN	NPT
	822-03-02-1	822-03-02-2	822-03-02-5	3	1/8
	822-03-04-1	822-03-04-2	822-03-04-5	3	1/4
	822-04-02-1	822-04-02-2	822-04-02-5	4	1/8
	822-04-04-1	822-04-04-2	822-04-04-5	4	1/4
	822-04-06-1	822-04-06-2	822-04-06-5	4	3/8
	822-06-02-1	822-06-02-2	822-06-02-5	6	1/8
	822-06-04-1	822-06-04-2	822-06-04-5	6	1/4
	822-06-06-1	822-06-06-2	822-06-06-5	6	3/8
	822-06-08-1	822-06-08-2	822-06-08-5	6	1/2
	822-08-04-1	822-08-04-2	822-08-04-5	8	1/4
	822-08-06-1	822-08-06-2	822-08-06-5	8	3/8
	822-08-08-1	822-08-08-2	822-08-08-5	8	1/2
	822-08-12-1	822-08-12-2	822-08-12-5	8	3/4
	822-10-06-1	822-10-06-2	822-10-06-5	10	3/8
	822-10-08-1	822-10-08-2	822-10-08-5	10	1/2
	822-10-12-1	822-10-12-2	822-10-12-5	10	3/4
	822-12-08-1	822-12-08-2	822-12-08-5	12	1/2
	822-12-12-1	822-12-12-2	822-12-12-5	12	3/4
	822-12-16-1	822-12-16-2	822-12-16-5	12	1
	822-16-12-1	822-16-12-2	822-16-12-5	16	3/4
	822-16-16-1	822-16-16-2	822-16-16-5	16	1



AN MALE TO NPT MALE 45° ADAPTER

823SERIES	BLUE	BLACK	CLEAR	AN	NPT
	823-03-02-1	823-03-02-2	823-03-02-5	3	1/8
	823-03-04-1	823-03-04-2	823-03-04-5	3	1/4
	823-04-02-1	823-04-02-2	823-04-02-5	4	1/8
	823-04-04-1	823-04-04-2	823-04-04-5	4	1/4
	823-04-06-1	823-04-06-2	823-04-06-5	4	3/8
	823-06-02-1	823-06-02-2	823-06-02-5	6	1/8
	823-06-04-1	823-06-04-2	823-06-04-5	6	1/4
	823-06-06-1	823-06-06-2	823-06-06-5	6	3/8
	823-06-08-1	823-06-08-2	823-06-08-5	6	1/2
	823-08-04-1	823-08-04-2	823-08-04-5	8	1/4
	823-08-06-1	823-08-06-2	823-08-06-5	8	3/8
	823-08-08-1	823-08-08-2	823-08-08-5	8	1/2
	823-08-12-1	823-08-12-2	823-08-12-5	8	3/4
	823-10-06-1	823-10-06-2	823-10-06-5	10	3/8
	823-10-08-1	823-10-08-2	823-10-08-5	10	1/2
	823-10-12-1	823-10-12-2	823-10-12-5	10	3/4
	823-12-08-1	823-12-08-2	823-12-08-5	12	1/2
	823-12-12-1	823-12-12-2	823-12-12-5	12	3/4
	823-12-16-1	823-12-16-2	823-12-16-5	12	1
	823-16-12-1	823-16-12-2	823-16-12-5	16	3/4
	823-16-16-1	823-16-16-2	823-16-16-5	16	1



AN MALE TO AN MALE TEE ADAPTER

BLUE	BLK	CLR	AN	824SERIES
824-03-1	824-03-2	824-03-5	3	
824-04-1	824-04-2	824-04-5	4	
824-06-1	824-06-2	824-06-5	6	
824-08-1	824-08-2	824-08-5	8	
824-10-1	824-10-2	824-10-5	10	
824-12-1	824-12-2	824-12-5	12	

AN MALE TEE ADAPTER W/NPT MALE ON BRANCH

BLUE	BLK	CLR	AN	NPT	825SERIES
825-03-02-1	825-03-02-2	825-03-02-5	3	1/8	
825-04-02-1	825-04-02-2	825-04-02-5	4	1/8	
825-06-04-1	825-06-04-2	825-06-04-5	6	1/4	
825-08-06-1	825-08-06-2	825-08-06-5	8	3/8	
825-10-08-1	825-10-08-2	825-10-08-5	10	1/2	
825-12-12-1	825-12-12-2	825-12-12-5	12	3/4	

AN MALE TEE ADAPTER W/NPT MALE ON RUN

BLUE	BLK	CLR	AN	NPT	826SERIES
826-03-02-1	826-03-02-2	826-03-02-5	3	1/8	
826-04-02-1	826-04-02-2	826-04-02-5	4	1/8	
826-06-04-1	826-06-04-2	826-06-04-5	6	1/4	
826-08-06-1	826-08-06-2	826-08-06-5	8	3/8	
826-10-08-1	826-10-08-2	826-10-08-5	10	1/2	
826-12-12-1	826-12-12-2	826-12-12-5	12	3/4	

ELBOW ADAPTER 90° AN MALE TO AN MALE

BLUE	BLK	CLEAR	SIZE	821SERIES
821-03-1	821-03-2	821-03-5	3	
821-04-1	821-04-2	821-04-5	4	
821-06-1	821-06-2	821-06-5	6	
821-08-1	821-08-2	821-08-5	8	
821-10-1	821-10-2	821-10-5	10	
821-12-1	821-12-2	821-12-5	12	
821-16-1	821-16-2	821-16-5	16	



WHAT THEY'RE SAYING...

"I prefer Redhorse Performance parts for many reasons. They are easy to use and install, the swivel fittings don't bind up like many competitors when installing or removing and the lightweight black hose can sneak through any obstacle."

- Marvin Stringer
South Elgin, IL

PRESSURE ADAPTER AN MALE TO AN MALE

9190SERIES	BLUE	BLK	CLEAR	SIZE	PORT
	9190-04-1	9190-04-2	-	4	1/8 NPT
	9190-06-1	9190-06-2	9190-06-5	6	1/8 NPT
	9190-08-1	9190-08-2	9190-08-5	8	1/8 NPT

PRESSURE ADAPTER AN FEMALE TO AN MALE

9192SERIES	BLUE	BLK	CLEAR	SIZE	PORT
	9192-04-01	9192-04-2	9192-04-5	4	1/8 NPT
	9192-06-01	9192-06-2	9192-06-5	6	1/8 NPT
	9192-08-01	9192-08-2	9192-08-5	8	1/8 NPT

UNION ADAPTER AN MALE TO AN MALE

815SERIES	BLUE	BLK	CLEAR	SIZE
	815-03-1	815-03-2	815-03-5	3
	815-04-1	815-04-2	815-04-5	4
	815-06-1	815-06-2	815-06-5	6
	815-08-1	815-08-2	815-08-5	8
	815-10-1	815-10-2	815-10-5	10
	815-12-1	815-12-2	815-12-5	12
	815-16-1	815-16-2	815-16-5	16

REDUCER ADAPTER AN MALE TO AN MALE

919SERIES	BLUE	BLK	CLEAR	LARGE	SMALL
	919-03-04-1	919-03-04-2	919-03-04-5	4	3
	919-06-04-1	919-06-04-2	919-06-04-5	6	4
	919-06-08-1	919-06-08-2	919-06-08-5	8	6
	919-08-04-1	919-08-04-2	919-08-04-5	8	4
	919-10-06-1	919-10-06-2	919-10-06-5	10	6
	919-10-08-1	919-10-08-2	919-10-08-5	10	8
	919-12-06-1	919-12-06-2	919-12-06-5	12	6
	919-12-08-1	919-12-08-2	919-12-08-5	12	8
	919-12-10-1	919-12-10-2	919-12-10-5	12	10
	919-16-10-1	919-16-10-2	919-16-10-5	16	10
	919-16-12-1	919-16-12-2	919-16-12-5	16	12

TRANSMISSION FITTINGS AN/JIC MALE TO NPSM

8262SERIES	BLUE	BLK	RED	CLEAR	AN	NPSM
	8262-06-04-1	8262-06-04-2	8262-06-04-3	8262-06-04-5	6	1/4
	8262-06-02-1	8262-06-02-2	8262-06-02-3	8262-06-02-5	6	1/8
	8262-08-04-1	8262-08-04-2	8262-08-04-3	8262-08-04-5	8	1/4



AN / JIC TO NPSM / AN TO AN / COUPLERS / NPT TO NPT REDUCERS AND TEE ADAPTERS

COUPLER ADAPTER AN FEMALE TO AN FEMALE

BLUE	BLK	CLEAR	SIZE	8100SERIES
8100-03-1	8100-03-2	8100-03-5	3	
8100-04-1	8100-04-2	8100-04-5	4	
8100-06-1	8100-06-2	8100-06-5	6	
8100-08-1	8100-08-2	8100-08-5	8	
8100-10-1	8100-10-2	8100-10-5	10	
8100-12-1	8100-12-2	8100-12-5	12	

45° COUPLER AN FEMALE TO AN FEMALE

BLUE	BLK	CLR	SIZE	8145SERIES
8145-04-1	8145-04-2	8145-04-5	4	
8145-06-1	8145-06-2	8145-06-5	6	
8145-08-1	8145-08-2	8145-08-5	8	
8145-10-1	8145-10-2	8145-10-5	10	
8145-12-1	8145-12-2	8145-12-5	12	

90° COUPLER AN FEMALE TO AN FEMALE

BLUE	BLK	CLR	SIZE	8190SERIES
8190-04-1	8190-04-2	8190-04-5	4	
8190-06-1	8190-06-2	8190-06-5	6	
8190-08-1	8190-08-2	8190-08-5	8	
8190-10-1	8190-10-2	8190-10-5	10	
8190-12-1	8190-12-2	8190-12-5	12	

MALE AN REDUCERS

BLUE	BLK	CLEAR	FEMALE	MALE	950SERIES
950-04-03-1	950-04-03-2	950-04-03-5	4	3	
950-06-04-1	950-06-04-2	950-06-04-5	6	4	
950-08-06-1	950-08-06-2	950-08-06-5	8	6	
950-10-06-1	950-10-06-2	950-10-06-5	10	6	
950-10-08-1	950-10-08-2	950-10-08-5	10	8	
950-12-10-1	950-12-10-2	950-12-10-5	12	10	

PIPE BUSHINGS

BLUE	BLK	CLEAR	FEMALE	MALE	912SERIES
912-04-02-1	912-04-02-2	-	1/8	1/4	
912-06-02-1	912-06-02-2	912-06-02-5	1/8	3/8	
912-06-04-1	912-06-04-2	912-06-04-5	1/4	3/8	
912-08-02-1	912-08-02-2	912-08-02-5	1/8	1/2	
912-08-04-1	912-08-04-2	-	1/4	1/2	
912-08-06-1	912-08-06-2	912-08-06-5	3/8	1/2	
912-12-04-1	912-12-04-2	912-12-04-5	1/4	3/4	
912-12-06-1	912-12-06-2	912-12-06-5	3/8	3/4	
912-12-08-1	912-12-08-2	912-12-08-5	1/2	3/4	
912-16-06-1	912-16-06-2	-	3/8	1	
912-16-08-1	912-16-08-2	912-16-08-5	1/2	1	
912-16-12-1	912-16-12-2	912-16-12-5	3/4	1	
912-20-12-1	912-20-12-2	912-20-12-5	3/4	1-1/4	

NPT MALE NIPPLE

BLUE	BLK	CLEAR	SIZE	911SERIES
911-02-1	911-02-2	911-02-5	1/8	
911-04-1	911-04-2	911-04-5	1/4	
911-06-1	911-06-2	911-06-5	3/8	
911-08-1	911-08-2	911-08-5	1/2	
911-12-1	911-12-2	911-12-5	3/4	
911-16-1	911-16-2	911-16-5	1	

NPT FEMALE NIPPLE

BLUE	BLK	SIZE	910SERIES
910-02-1	910-02-2	1/8	
910-04-1	910-04-2	1/4	
910-06-1	910-06-2	3/8	
910-08-1	910-08-2	1/2	
910-12-1	910-12-2	3/4	
910-16-1	910-16-2	1	

NPT FEMALE TEE

BLUE	BLK	SIZE	917SERIES
917-02-1	917-02-2	1/8	
917-04-1	917-04-2	1/4	
917-06-1	917-06-2	3/8	
917-08-1	917-08-2	1/2	
917-12-1	917-12-2	3/4	
917-16-1	917-16-2	1	

AN BULKHEAD / STRAIGHT / 45° / 90° / TEE ADAPTERS / NUTS



STRAIGHT BULKHEAD ADAPTER AN MALE TO AN MALE

832SERIES	BLUE	BLK	SIZE
	832-03-1	832-03-2	3
	832-04-1	832-04-2	4
	832-06-1	832-06-2	6
	832-08-1	832-08-2	8
	832-10-1	832-10-2	10
	832-12-1	832-12-2	12
	832-16-1	832-16-2	16

45° BULKHEAD ADAPTER AN MALE TO AN MALE

837SERIES	BLUE	BLK	SIZE
	837-03-1	837-03-2	3
	837-04-1	837-04-2	4
	837-06-1	837-06-2	6
	837-08-1	837-08-2	8
	837-10-1	837-10-2	10
	837-12-1	837-12-2	12
	837-16-1	837-16-2	16

90° BULKHEAD ADAPTER AN MALE TO AN MALE

833SERIES	BLUE	BLK	SIZE
	833-03-1	833-03-2	3
	833-04-1	833-04-2	4
	833-06-1	833-06-2	6
	833-08-1	833-08-2	8
	833-10-1	833-10-2	10
	833-12-1	833-12-2	12
	833-16-1	833-16-2	16

BULKHEAD TEE ON RUN AN MALE TO AN MALE

804SERIES	BLUE	BLK	SIZE
	804-03-1	804-03-2	3
	804-04-1	804-04-2	4
	804-06-1	804-06-2	6
	804-08-1	804-08-2	8
	804-10-1	804-10-2	10
	804-12-1	804-12-2	12
	804-16-1	804-16-2	16

BULKHEAD TEE ON LEG AN MALE TO AN MALE

834SERIES	BLUE	BLK	SIZE
	834-03-1	834-03-2	3
	834-04-1	834-04-2	4
	834-06-1	834-06-2	6
	834-08-1	834-08-2	8
	834-10-1	834-10-2	10
	834-12-1	834-12-2	12
	834-16-1	834-16-2	16

BULKHEAD NUTS

924SERIES	BLUE	BLK	SIZE	QTY/PACKAGE
	924-03-1	924-03-2	3	2
	924-04-1	924-04-2	4	2
	924-06-1	924-06-2	6	2
	924-08-1	924-08-2	8	2
	924-10-1	924-10-2	10	-
	924-12-1	924-12-2	12	-
	924-16-1	924-16-2	16	-

HIGH FLOW BULKHEAD ADAPTERS WITH WASHERS AND NUT

8832SERIES	BLUE	BLK	SIZE
	8832-06-1	8832-06-2	6
	8832-08-1	8832-08-2	8
	8832-10-1	8832-10-2	10
	8832-12-1	8832-12-2	12

8832 SERIES GASKET WASHER

PART#	DESCRIPTION
8832-06-03	white gaskets for 8832 series - 2pcs/pkg
8832-08-03	white gaskets for 8832 series - 2pcs/pkg
8832-10-03	white gaskets for 8832 series - 2pcs/pkg
8832-12-03	white gaskets for 8832 series - 2pcs/pkg



FUEL FILTERS



HIGH FLOW CANISTER STYLE FUEL FILTER

The RHP 4501 cartridge style high performance fuel filter uses a replaceable 10 micron element for extra fine filtration. The RHP cartridge is CNC machined and hand polished for an unbeatable finish. Integral mounting bracket makes installation a breeze. Maximum flow of 225 GPH. Can also be used for fuel injection. Available in black and clear anodized finishes.

BLACK	CLEAR	INLET / OUTLET	4501 SERIES
4501-06-2	4501-06-5	-6 AN Female	
4501-08-2	4501-08-5	-8 AN Female	



4501 FUEL FILTER ELEMENT

PART#	DESCRIPTION
4501-10P	10 Micron Paper Fuel filter element and o-rings for 4501 series
4501-40S	40 Micron Strainless Steel Fuel filter element and o-rings for 4501 series
4501-100S	100 Micron Strainless Steel Fuel filter element and o-rings for 4501 series

IN LINE RACE FUEL FILTERS - NEW!

BLACK	RED	CLEAR	INLET	OUTLET	4651 SERIES
4651-06-2	4651-06-3	4651-06-5	6	6	
4651-08-2	4651-08-3	4651-08-5	8	8	



FUEL FILTERS AN STYLE

BLUE	BLK	RED	CLEAR	INLET	OUTLET	4151 SERIES
4151-06-1	4151-06-2	4151-06-3	4151-06-5	6	6	
4151-08-1	4151-08-2	4151-08-3	4151-08-5	8	8	



4151-100 Replacement Filter

*All filters include a serviceable stainless element, pressure rating of 500psi and a nominal micron rating of 100.

FUEL FILTERS / CHECK VALVE / BLOCK OFF PLATES / WATER NECKS



FUEL FILTERS CLAMP STYLE

4060 SERIES	BLUE	BLK	CHROME	INLET	OUTLET
	4060-05-1	4060-05-2	4060-05-4	5/16	5/16
	4060-06-1	4060-06-2	4060-06-4	3/8	3/8



*All filters include a serviceable 150 micron stainless element.



4060-04 Replacement Washer

ONE WAY CHECK VALVE - COMING IN 2016!

4152 SERIES	BLUE	BLK	RED	CLEAR	INLET	OUTLET
	4152-04-1	4152-04-2	4152-04-3	4152-04-5	4	4
	4152-06-1	4152-06-2	4152-06-3	4152-06-5	6	6
	4152-08-1	4152-08-2	4152-08-3	4152-08-5	8	8
	4152-10-1	4152-10-2	4152-10-3	4152-10-5	10	10
	4152-12-1	4152-12-2	4152-12-3	4152-12-5	12	12



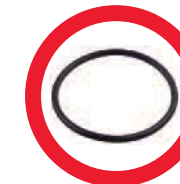
FUEL PUMP BLOCK OFF PLATES - COMING IN 2016!

4810 SERIES	BLUE	BLACK	RED	CLEAR	APPLICATION
	4810 454 1	4810 454 2	4810 454 3	4810 454 5	BBC Engine
	4810 350 1	4810 350 2	4810 350 3	4810 350 5	SBC Engine
	4810 440 1	4810 440 2	4810 440 3	4810 440 5	Chrysler V8 Engine
	4810 302 1	4810 302 2	4810 302 3	4810 302 5	Ford Except 351C, 351M & 400 Engine
	4810 400 1	4810 400 2	4810 400 3	4810 400 5	Ford 351C, 351M & 400 Engine



ALUMINUM WATER NECKS - COMING IN 2016!

4910 SERIES	BLUE	BLACK	RED	CLEAR	APPLICATION
	4910 455 20 1	4910 455 20 2	4910 455 20 3	4910 455 20 5	1.25" Hose for Pontiac V8 Engine
	4910 455 24 1	4910 455 24 2	4910 455 24 3	4910 455 24 5	1.50" Hose for Pontiac V8 Engine
	4910 350 20 1	4910 350 20 2	4910 350 20 3	4910 350 20 5	1.25" Hose for Chevy V8 All Engine
	4910 350 24 1	4910 350 24 2	4910 350 24 3	4910 350 24 5	1.50" Hose for Chevy V8 All Engine
	4910 302 20 1	4910 302 20 2	4910 302 20 3	4910 302 20 5	1.25" Hose for SBF 260/302, 351 W Engine
	4910 302 24 1	4910 302 24 2	4910 302 24 3	4910 302 24 5	1.50" Hose for SBF 260/302, 351 W Engine
	4910 440 20 1	4910 440 20 2	4910 440 20 3	4910 440 20 5	1.25" Hose for Chrysler V8 All Engine
	4910 440 24 1	4910 440 24 2	4910 440 24 3	4910 440 24 5	1.50" Hose for Chrysler V8 All Engine
	4910 460 20 1	4910 460 20 2	4910 460 20 3	4910 460 20 5	1.25" Hose for BBF Engine
	4910 460 24 1	4910 460 24 2	4910 460 24 3	4910 460 24 5	1.50" Hose for BBF Engine
	4910 347 20 1	4910 347 20 2	4910 347 20 3	4910 347 20 5	1.25" Hose for GM LS1 Engine
	4910 347 24 1	4910 347 24 2	4910 347 24 3	4910 347 24 5	1.50" Hose for GM LS1 Engine
	4910 383 20 1	4910 383 20 2	4910 383 20 3	4910 383 20 5	1.25" Hose for Chevy/Chrysler All Filler Neck Engine
	4910 383 24 1	4910 383 24 2	4910 383 24 3	4910 383 24 5	1.50" Hose for Chevy/Chrysler All Filler Neck Engine
	4910 426 20 1	4910 426 20 2	4910 426 20 3	4910 426 20 5	1.25 Hose for Chrysler All Straight Engine
	4910 426 24 1	4910 426 24 2	4910 426 24 3	4910 426 24 5	1.50 Hose for Chrysler All Straight Engine



4910-00 Replacement Water Neck O-Ring



AN CAPS / PLUGS / HOSE SEPARATORS

AN CAPS

BLUE	BLK	CLEAR	SIZE	929SERIES
929-03-1	929-03-2	929-03-5	3	
929-04-1	929-04-2	929-04-5	4	
929-06-1	929-06-2	929-06-5	6	
929-08-1	929-08-2	929-08-5	8	
929-10-1	929-10-2	929-10-5	10	
929-12-1	929-12-2	929-12-5	12	
929-16-1	929-16-2	929-16-5	16	

AN FLARE PLUGS

BLUE	BLK	CLEAR	SIZE	806SERIES
806-03-1	806-03-2	806-03-5	3	
806-04-1	806-04-2	806-04-5	4	
806-06-1	806-06-2	806-06-5	6	
806-08-1	806-08-2	806-08-5	8	
806-10-1	806-10-2	806-10-5	10	
806-12-1	806-12-2	806-12-5	12	
806-16-1	806-16-2	806-16-5	16	

AN O-RING PORT PLUGS

BLUE	BLK	CLEAR	SIZE	814SERIES
814-03-1	814-03-2	814-03-5	3	
814-04-1	814-04-2	814-04-5	4	
814-06-1	814-06-2	814-06-5	6	
814-08-1	814-08-2	814-08-5	8	
814-10-1	814-10-2	814-10-5	10	
814-12-1	814-12-2	N/A	12	
814-16-1	814-16-2	N/A	16	

PIPE PLUGS

BLUE	BLK	RED	CLEAR	SIZE	QTY PER PACKAGE	932SERIES
932-01-1	932-01-2	932-01-3	932-01-5	1/16"	2	
932-02-1	932-02-2	932-02-3	932-02-5	1/8"	2	
932-04-1	932-04-2	932-04-3	932-04-5	1/4"	2	
932-06-1	932-06-2	932-06-3	932-06-5	3/8"	2	
932-08-1	932-08-2	932-08-3	932-08-5	1/2"	1	
932-12-1	932-12-2	932-12-3	932-12-5	3/4"	1	
932-16-1	932-16-2	932-16-3	932-16-5	1"	1	

HOSE SEPARATORS

BLUE	BLACK	RED	CLEAR	SIZE	730SERIES
730-04-04-1	730-04-04-2	730-04-04-3	730-04-04-5	-04 to -04	
730-06-06-1	730-06-06-2	730-06-06-3	730-06-06-5	-06 to -06	
730-08-08-1	730-08-08-2	730-08-08-3	730-08-08-5	-08 to -08	
730-10-10-1	730-10-10-2	730-10-10-3	730-10-10-5	-10 to -10	
730-12-12-1	730-12-12-2	730-12-12-3	730-12-12-5	-12 to -12	

FUEL RAILS / IN-TANK FUEL PUMP / FUEL REGULATOR



HIGH-FLOW FUEL RAILS

The all new RHP Fuel Rails have the same dedication to design, attention to detail and polished finish that made our hose ends famous. Designed from the ground up, the rails are CNC machined from billet aluminum. Each kit is engine specific and comes with custom assembly brackets, premium 205 or 235 Series e85 compatible steel braided hose and all necessary ORB-Port fittings with Viton O-rings. See chart below for details on flow ratings.

HIGH FLOW, BILLET ALUMINUM FUEL RAIL KITS - COMING IN 2016!

5910SERIES	PART#	APPLICATION	FLOW RATE (L)
	5910-302-1	86-93 Ford 5.0	5
	5910-460-1	99-04 Mustang 4.6	4.6
	5910-4601-1	96-98 Mustang 4.6	4.6
	5910-427-1	2010-2012 Camaro	4.6
	5910-347-1	LS3 GM LS1	4.6
	5910-4603-1	2005-2010 Mustang 4.6 3V	4.6
	5910-371-1	2005-2014 Chrysler Hemi	6.1

HIGH PERFORMANCE FUEL PUMPS

The RHP 6910 Series in-tank fuel pumps reliably supply your high performance vehicle with the fuel it needs. Each pump is individually inspected and is fully e85 compatible. Available in 265 LPH and 340LPH flow rates and a variety of popular inlets, the RHP 6910 series pumps can be utilized for most applications. Each kit includes fuel pump, rubber sleeve and end caps, pre filter, hose, clamps and everything else you need to upgrade your pump. See below chart for product details.

E85 COMPATIBLE IN-TANK FUEL PUMP - COMING IN 2016!

6910SERIES	PART#	DESCRIPTION	FLOW RATE (LPH)	PSI
	6910-265-01	265 LPH - Center Inlet	265	40
	6910-265-02	265 LPH - Offset Inlet	265	40
	6910-265-03	265 LPH - Offset Inlet, Inline	265	40
	6910-345-01	345 LPH - Center Inlet	340	43
	6910-345-02	345 LPH - Offset Inlet	340	43
	6910-345-03	345 LPH - Offset Inlet, Inline	340	43

UNIVERSAL BYPASS FUEL PRESSURE REGULATOR

The RHP 7910 Series is a custom designed, CNC machined universal bypass fuel pressure regulator. The 7910's base pressure can be adjusted from 30-70psi and can support applications up to 1000 HP. The perfect match for our 6910 series pumps, the 7910 series regulator delivers amazing performance in a compact, lightweight housing. The regulator features a -06 O-ring inlet and outlet ports and come with a steel mounting bracket.

FUEL INJECTION FUEL PRESSURE REGULATOR - COMING IN 2016!

7910SERIES	BLACK	RED	CLEAR
	7910-100-2	7910-100-3	7910-100-5



HOSE FINISHERS / HOSE NIPPLES / CARBURETOR FITTINGS / ADAPTERS

HOSE FINISHERS

RED	BLACK	CHROME	HOSE	993SERIES
993-04-3	993-04-2	993-04-4	1/4	
993-05-3	993-05-2	993-05-4	5/16	
993-06-3	993-06-2	993-06-4	3/8	
993-07-3	993-07-2	993-07-4	11/32	
993-08-3	993-08-2	993-08-4	1/2	
993-10-3	993-10-2	993-10-4	5/8	
993-12-3	993-12-2	993-12-4	3/4	
993-16-3	993-16-2	993-16-4	1	

HOSE NIPPLE TO NPT

BLUE STRAIGHT	BLUE 45°	BLUE 90°	HOSE SIZE	NPT SIZE	840SERIES
840-04-02-1	844-04-02-1	842-04-02-1	1/4	1/8	
840-06-04-1	844-06-04-1	842-06-04-1	3/8	1/4	
840-06-06-1	N/A	N/A	3/8	3/8	
840-08-06-1	844-08-06-1	842-08-06-1	1/2	3/8	
840-10-08-1	844-10-08-1	842-10-08-1	5/8	1/2	
840-12-12-1	844-12-12-1	842-12-12-1	3/4	3/4	
840-16-12-1	844-16-12-1	842-16-12-1	1	3/4	

CARBURETOR TO AN MALE

APPLICATION	CARB SIDE	AN	BLUE	BLACK	RED	5020SERIES
Carter/Edlebrock Single Inlet	5/8-20	6	5020-06-1	5020-06-2	5020-06-3	
Dual Feed Holley	9/16-24	6	5015-06-1	5015-06-2	5015-06-3	
Dual Feed Holley	7/8-20	6	5030-06-1	5030-06-2	5030-06-3	
Dual Feed Holley	7/8-20	8	5040-08-1	5040-08-2	5040-08-3	

LONG-STYLE CARBURETOR INLET FITTING

SIZE	RED/BLUE	BLACK	CLEAR	5100SERIES
-06 X 7/8-20 Holley	5100-06-1	5100-06-2	5100-06-5	
-08 X 7/8-20 Holley	5100-08-1	5100-08-2	5100-08-5	
NEW! -06 X 9/16-24 Demon Carb	5045-06-1	5045-06-2	5045-06-3	

FUEL PUMP TO AN MALE

BLUE	BLACK	RED	CLEAR	SIZE	5050SERIES
5050-06-1	5050-06-2	5050-06-3	5050-06-5	-06 AN male to 1/2-20 fuel pump adapter	

INVERTED FLARE FUEL PUMP TO AN MALE

BLUE	BLACK	RED	CLEAR	SIZE	5060SERIES
5060-06-1	5060-06-2	5060-06-3	5060-06-5	-06 AN male to 5/8-18 inverted flare pump/fuel line adapter	

DUAL FEED CARBURETOR KITS



Redhorse is pleased to announce a line of dual feed carburetor kits. Available in -06AN and -08AN sizes and compatible with Holley 4150 and 4500 carburetors. The Redhorse Performance Dual Feed Carburetor kit comes in black, red/blue and clear anodized finishes. Like our hose ends, our carb kits are hand polished, precision machined and color consistent anodized for a look and performance you will not find anywhere else.

5150SERIES DUAL FEED CARBURETORS KITS

BLUE	BLK	CLR	DESCRIPTION
5150-06-1	5150-06-2	5150-06-5	-06 X 7/8-20 Dual Inlet to fit Holley-4150 (center to center 9.3")
5150-08-1	5150-08-2	5150-08-5	-08X 7/8-20 Dual Inlet to fit Holley-4150 (center to center 9.3")

5500SERIES DUAL FEED CARBURETORS KITS

BLUE	BLK	CLR	DESCRIPTION
5500-08-1	5500-08-2	5500-08-5	-08X 7/8-20 Dual Inlet to fit Holley-4500 (center to center 11.35")

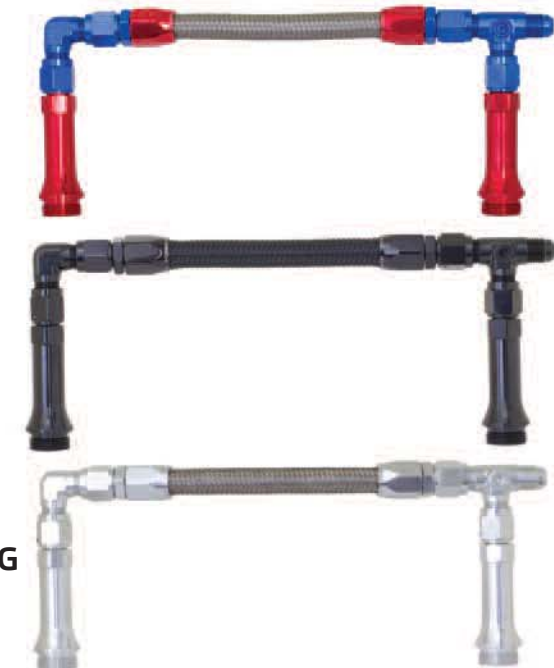
5160SERIES DUAL FEED LINE

BLUE	BLK	CLR	DESCRIPTION
5160-06-1	5160-06-2	5160-06-5	-06 x 7/8-20 Dual Inlet to fit Holley-4160 (center to center 8.8")

COMING IN 2016!

5155SERIES DUAL FEED LINE ADJUSTABLE FUEL LOG

BLK	RED	DESCRIPTION
5155-08-2	5155-08-3	-08 DUAL FEED ADJUSTABLE FUEL LOG



WELD-ON ADAPTERS / O-RINGS

WELD-ON ADAPTER AN MALE

971SERIES	UNFINISHED RAW ALUMINUM	AN SIZE
	971-03-0	3
	971-04-0	4
	971-06-0	6
	971-08-0	8
	971-10-0	10
	971-12-0	12
	971-16-0	16

WELD-ON ADAPTER FEMALE O-RING PORT

871SERIES	UNFINISHED RAW ALUMINUM	AN SIZE
	871-04-0	4
	871-06-0	6
	871-08-0	8
	871-10-0	10
	871-12-0	12
	871-16-0	16

WELD-ON ADAPTER NPT FEMALE

867SERIES	RAW ALUMINUM	NPT SIZE
	867-02-0	1/8"
	867-04-0	1/4"
	867-06-0	3/8"
	867-08-0	1/2"
	867-12-0	3/4"

O-RINGS

720SERIES	PART#	AN	QTY/PKG
	720-03-1	-03 Viton O-Ring	10
	720-04-1	-04 Viton O-Ring	10
	720-06-1	-06 Viton O-Ring	10
	720-08-1	-08 Viton O-Ring	10
	720-10-1	-10 Viton O-Ring	10
	720-12-1	-12 Viton O-Ring	10
	720-16-1	-16 Viton O-Ring	10



PRE-ASSEMBLED BRAKE LINES

RHP 3300 Series universal brake hose is constructed from RHP 300 Series PTFE stainless steel braided hose. Our brake hose is for use on all of our 3500 series nickel plated steel crimped fittings. **FOR OFF ROAD RACING USE ONLY.**

Custom assemblies available upon request. Please contact your local distributor for details.

STRAIGHT TO STRAIGHT BRAKE LINES - STAINLESS

-3 AN	-4 AN	HOSE LENGTH	3300SERIES
3300-03-09	3300-04-09	9"	
3300-03-12	3300-04-12	12"	
3300-03-13	3300-04-13	13"	
3300-03-15	3300-04-15	15"	
3300-03-16	3300-04-16	16"	
3300-03-18	3300-04-18	18"	
3300-03-20	3300-04-20	20"	
3300-03-21	3300-04-21	21"	
3300-03-24	3300-04-24	24"	
3300-03-27	3300-04-27	27"	
3300-03-30	3300-04-30	30"	
3300-03-36	3300-04-36	36"	
3300-03-48	3300-04-48	48"	
3300-03-60	3300-04-60	60"	

STRAIGHT TO 90° BRAKE LINES - STAINLESS - NEW!

-3 AN	-4 AN	HOSE LENGTH	3390SERIES
3390-03-09	3390-04-09	9"	
3390-03-12	3390-04-12	12"	
3390-03-13	3390-04-13	13"	
3390-03-15	3390-04-15	15"	
3390-03-16	3390-04-16	16"	
3390-03-18	3390-04-18	18"	
3390-03-20	3390-04-20	20"	
3390-03-21	3390-04-21	21"	
3390-03-24	3390-04-24	24"	
3390-03-27	3390-04-27	27"	
3390-03-30	3390-04-30	30"	
3390-03-36	3390-04-36	36"	
3390-03-48	3390-04-48	48"	
3390-03-60	3390-04-60	60"	

STRAIGHT TO STRAIGHT BANJO BRAKE LINES - STAINLESS

-3 AN	-4 AN	HOSE LENGTH	3400SERIES
3400-03-09	3400-04-09	9"	
3400-03-12	3400-04-12	12"	
3400-03-13	3400-04-13	13"	
3400-03-15	3400-04-15	15"	
3400-03-16	3400-04-16	16"	
3400-03-18	3400-04-18	18"	
3400-03-20	3400-04-20	20"	
3400-03-21	3400-04-21	21"	
3400-03-24	3400-04-24	24"	
3400-03-27	3400-04-27	27"	
3400-03-30	3400-04-30	30"	
3400-03-36	3400-04-36	36"	
3400-03-48	3400-04-48	48"	
3400-03-60	3400-04-60	60"	

NEW!

BLACK PRE-ASSEMBLED BRAKE LINES



RHP 3300 Series universal brake hoses are constructed from our special black covered brake hose and feature our special black nickel plated steel fittings for a clean, stealth look. **FOR OFF ROAD RACING USE ONLY.**

STRAIGHT TO STRAIGHT BRAKE LINES - BLACK - NEW!

-3 AN	HOSE LENGTH	3302SERIES
3302-03-09	9"	
3302-03-12	12"	
3302-03-13	13"	
3302-03-15	15"	
3302-03-16	16"	
3302-03-18	18"	
3302-03-20	20"	
3302-03-21	21"	
3302-03-24	24"	
3302-03-27	27"	
3302-03-30	30"	
3302-03-36	36"	
3302-03-48	48"	
3302-03-60	60"	

STRAIGHT TO 90° BRAKE LINES - BLACK - NEW!

-3 AN	HOSE LENGTH	3392SERIES
3392-03-09	9"	
3392-03-12	12"	
3392-03-13	13"	
3392-03-15	15"	
3392-03-16	16"	
3392-03-18	18"	
3392-03-20	20"	
3392-03-21	21"	
3392-03-24	24"	
3392-03-27	27"	
3392-03-30	30"	
3392-03-36	36"	
3392-03-48	48"	
3392-03-60	60"	

STRAIGHT TO STRAIGHT BANJO BRAKE LINES - BLACK - NEW!

-3 AN	HOSE LENGTH	3402SERIES
3402-03-09	9"	
3402-03-12	12"	
3402-03-13	13"	
3402-03-15	15"	
3402-03-16	16"	
3402-03-18	18"	
3402-03-20	20"	
3402-03-21	21"	
3402-03-24	24"	
3402-03-27	27"	
3402-03-30	30"	
3402-03-36	36"	
3402-03-48	48"	
3402-03-60	60"	

RHP universal brake hose is constructed from RHP 300 Series PTFE stainless steel braided hose. Our brake hose is for use on all of our 3500 series crimped fittings. Engineered for use with RHP 3500 series brake line fittings.
FOR OFF ROAD RACING USE ONLY.

UNIVERSAL BULK BRAKE HOSE

PART#	DESCRIPTION	300SERIES
300-03-1	-3 brake hose - bulk	
300-04-1	-4 brake hose - bulk - COMING IN 2016!	

BRAKE LINE FITTINGS AND ADAPTERS

The RHP nickel-plated steel AN brake adapters are designed for high performance and durability. Available in a wide selection of metric and SAR threads to suit most applications.

INVERTED FLARE FEMALE ADAPTER

PART#	DESCRIPTION	335SERIES
335-03-11	-03 to 10mmx1.0 female inverted flare -2pcs/pkg	
335-03-10	-03 to 10mmx1.25 female inverted flare -2pcs/pkg	
335-03-03	-03 to 3/8-24 inverted flare female -2pcs/pkg	
335-04-11	-04 to 10mmx1.0 female inverted flare -2pcs/pkg	
335-04-10	-04 to 10mmx1.25 female inverted flare -2pcs/pkg	
335-04-03	-04 to 3/8-24 inverted flare female -2pcs/pkg	



INVERTED FLARE MALE ADAPTER

PART#	DESCRIPTION	336SERIES
336-03-11	-03 to 10mmx1.0 male inverted flare -2pcs/pkg	
336-03-03	-03 to -03 male inverted flare -2pcs/pkg	
336-03-10	-03 to 10mmx1.25 male inverted flare -2pcs/pkg	
336-03-04	-03 to 7/16-20 inverted flare male -2pcs/pkg	
336-03-24	-03 to 7/16-24 inverted flare male -2pcs/pkg	
336-04-11	-04 to 10mmx1.0 male inverted flare -2pcs/pkg	
336-04-03	-04 to -03 male inverted flare -2pcs/pkg	
336-04-10	-04 to 10mmx1.25 male inverted flare -2pcs/pkg	
336-04-04	-04 to 7/16-20 inverted flare male -2pcs/pkg	
336-04-24	-04 to 7/16-24 inverted flare male -2pcs/pkg	



INVERTED FLARE MALE TEE ADAPTER

PART#	DESCRIPTION	342SERIES
342-03-03	-03 to tee 3/8x24 inverted flare male	
342-04-03	-04 to tee 3/8x24 inverted flare male	



BRAKE ADAPTER FITTING

PART#	DESCRIPTION	3500SERIES
3500-03	-03 Straight Steel Crimp-On Brake Hose End	
3500-04	-04 Straight Steel Crimp-On Brake Hose End	



For use with RHP 300 Series PTFE hose. Must be assembled with use of crimping tool/machine.

MUSTANG FITTING

345SERIES	PART#	DESCRIPTION
	345-03-04	7/16"-24 to -03 fittings
	345-03-03	3/8"-24 to -03 fittings
	345-04-04	7/16"-24 to -04 fittings
	345-04-03	3/8"-24 to -04 fittings



BOLT DOWN TEE - **COMING IN 2016!**

346SERIES	PART#	DESCRIPTION
	346-03	3/8-24 I.F. GM Female Tee w/3/8-24 Concave



BANJO FITTING

3200SERIES	PART#	DESCRIPTION
	3200-03	10mm (3/8") to straight -03
	3235-03	10mm (3/8") to 35 deg radius -03
	3290-03	10mm (3/8") to 90 deg radius -03
	3200-04	10mm (3/8") to straight -04
	3235-04	10mm (3/8") to 35 deg radius -04
	3290-04	10mm (3/8") to 90 deg radius -04



STEEL BANJO ADAPTER - **NEW!**

344SERIES	PART#	DESCRIPTION
	344-03	7/16" to -03 Banjo Bolt (GM Style)
	344-03-2	7/16" to -03 Banjo Bolt (GM Style) Black



BANJO BOLTS

332SERIES	PART#	DESCRIPTION
	332-03	3/8-24 banjo bolts
	332-04	7/16-20 banjo bolts
	332-24	7/16-24 banjo bolts
	332-10	10mmx1.5 banjo bolts



FLARE PIPE

316SERIES	PART#	DESCRIPTION
	316-03-02	stainless -03 flare to 1/8" pipe straight
	316-04-02	stainless -04 flare to 1/8" pipe straight



90° FLARE PIPE

322SERIES	PART#	DESCRIPTION
	322-03-02	stainless -03 flare to 1/8" pipe 90 deg
	322-04-02	stainless -04 flare to 1/8" pipe 90 deg



45° FLARE PIPE

323SERIES	PART#	DESCRIPTION
	323-03-02	stainless -03 flare to 1/8" pipe 45 deg
	323-04-02	stainless -04 flare to 1/8" pipe 45 deg



FRAME FITTING

343SERIES	PART#	DESCRIPTION
	343-03	Thru the frame fitting 2" to -03 fitting - 2pcs/pkg
	343-04	Thru the frame fitting 2" to -04 fitting - 2pcs/pkg



INLINE TEE FOR BRAKE LIGHT SWITCH **COMING IN 2016!**

347SERIES	PART#	DESCRIPTION
	347-03	-03 to 1/8 NPT Inline Tee for Brake Light Switch





LINE CLAMPS / HOSE CLAMPS / BRAKE LINE ACCESSORIES

BRAKE BRACKET - COMING IN 2016!

PART#	DESCRIPTION	356SERIES
-------	-------------	-----------

356-0 Bolt-on 90° mounting bracket - 2pcs/pkg



BRAKE TAB - COMING IN 2016!

PART#	DESCRIPTION	357SERIES
-------	-------------	-----------

357-0 Weld-on brake hose bracket - 2pcs/pkg



BRAKE HOSE E-CLIPS - COMING IN 2016!

PART#	DESCRIPTION	358SERIES
-------	-------------	-----------

358-0 Brake hose E-Clips 10pcs/pkg



BRAKE LINE RETAINING CLIPS COMING IN 2016!

PART#	DESCRIPTION	359SERIES
-------	-------------	-----------

359-0 Brake Line Retaining Clips 10pcs/pkg



HARD LINE CLAMPS - NEW!

PART#	DESCRIPTION	320SERIES
-------	-------------	-----------

320-316-5 3/16" Polished Aluminum Hard Line Clamps - 6pcs/pkg
 320-14-5 1/4" Polished Aluminum Hard Line Clamps - 6pcs/pkg
 320-516-5 5/16" Polished Aluminum Hard Line Clamps - 6pcs/pkg
 320-38-5 3/8" Polished Aluminum Hard Line Clamps - 6pcs/pkg
 320-316-2 3/16" Black Aluminum Hard Line Clamps - 6pcs/pkg
 320-14-2 1/4" Black Aluminum Hard Line Clamps - 6pcs/pkg
 320-516-2 5/16" Black Aluminum Hard Line Clamps - 6pcs/pkg
 320-38-2 3/8" Black Aluminum Hard Line Clamps - 6pcs/pkg



RUBBER CUSHIONED HOSE CLAMP - NEW!

PART#	DESCRIPTION	220SERIES
-------	-------------	-----------

220-03-2 -03 Cushioned Hose Clamp 10pcs/pkg
 220-04-2 -04 Cushioned Hose Clamp 10pcs/pkg
 220-06-2 -06 Cushioned Hose Clamp 10pcs/pkg
 220-08-2 -08 Cushioned Hose Clamp 10pcs/pkg
 220-10-2 -10 Cushioned Hose Clamp 10pcs/pkg
 220-12-2 -12 Cushioned Hose Clamp 10pcs/pkg
 220-16-2 -16 Cushioned Hose Clamp 10pcs/pkg



PRESSURE GAUGES



LIQUID FILLED FUEL PRESSURE GAUGE - NEW!

5001SERIES	WHITE W/ SILVER SCREWS	WHITE W/ BLK SCREWS	PLAIN BLACK	PSI	INLET
	5001-15-1 5001-60-1 5001-100-1	5001-15-2 5001-60-2 5001-100-2	5001-15-3 5001-60-3 5001-100-3	15 60 100	1/8 NPT 1/8 NPT 1/8 NPT



TIRE PRESSURE GAUGE

5000SERIES	PART#	DESCRIPTION
	5000-15	Tire pressure gauge - 0-15psi
	5000-30	Tire pressure gauge - 0-30psi
	5000-45	Tire pressure gauge - 0-45psi
	5000-60	Tire pressure gauge - 0-60psi



WHAT THEY'RE SAYING...



"I wanted to do something totally different from the norm in the air ride world and use AN fitting for the air ride system, on my 57 Chevy truck. When I was shopping for fittings I found Redhorse. No other company could even touch Redhorse's quality or price, not to mention their customer service and support. It is top notch! I will be a customer for life."

- Charles Simpson "Scurbdog"
Chattanooga, TN



PLAN-O-GRAM / DISPLAY RACK / MERCHANDISE

REDHORSE PERFORMANCE PLAN-O-GRAM/DISPLAY RACK

A Redhorse Performance plan-o-gram is the easiest way to get into the hose and fitting business. All kits include a display rack, hooks, header card and a selection of our top moving parts. Redhorse has many different plan-o-gram options including all black sets, all red and blue sets, mixed color sets and more. Contact our sales department or your local warehouse distributor for more details.



REDHORSE PERFORMANCE MERCHANDISE



WHAT THEY'RE SAYING...

"Mike Janis and his Jan-Cen Racing Engines/Mike Janis Superchargers NHRA Pro Mod Camaro relies on nothing but the best parts and pieces for their hot rod! That is why the car is equipped with Redhorse Performance hose & fittings from front to back!! These hoses and fittings are some of the most durable and innovative products we have seen in the market. We are honored to represent the RHP brand."

- Mike Janis, Owner/Driver for MJR.
Lancaster, NY



"I come from a long line of racers like me! My family has been racing with NHRA for over 30 years and I'm proud to be continuing the tradition. For the past 5 years I've been behind the wheel of a super comp dragster and shared seat time with my Dad Stewart in his 1970 Ford Falcon. I'm the 2012 Beech Bend Rookie of the Year, 2014 Ohio Valley 7.50 Outlaw Champion, and hoping to add many more titles and milestones to that list in the future! Redhorse Performance has been so supportive of me and I'm very thankful for the partnership we have built. We will have a busy winter building two more cars for the team so look out for Shop Hill Racing at a track near you in 2016!"

- Presley Wilkerson
Louisville, KY



Andrew Kung Photography

"Run after run, I know I can count on the performance and good looks of my Redhorse Performance lines and fittings. Thanks for such a great product!"

- Tim Reisen
Elgin, IL

