



INSTALLATION INSTRUCTIONS

2015-up FORD F-150 HORIZON FRONT BUMPER

PART # BHF15HBMT / BHF15HBMN

Warning: *If your vehicle has adaptive cruise, please ensure that your adaptive cruise is working correctly once the Ranch Hand bumper is installed. Adaptive cruise may need to be cleaned or adjusted to ensure it functions properly. See your owner's manual on page 214 for care of the adaptive cruise.*

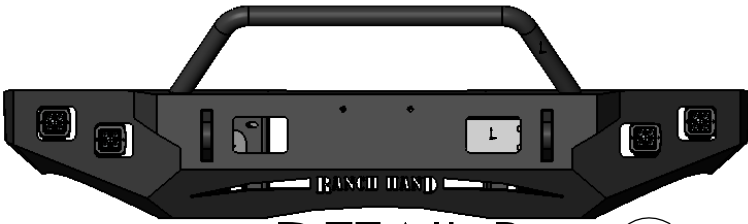
1. To remove the factory bumper, you will need to remove the center plastic insert from the bumper. There will be several clips that hold it in place. This will allow you to have access to the bumper bolts.
2. If an Adaptive Cruise Control Module is present, located on the driver side, it will need to be unplugged and removed. It will be installed later.
3. Remove the four bumper nuts, two on each frame rail.
4. Unplug the fog lights if present.
5. There will be two more nuts, one located on each frame rail, that needs to be removed from the back-side of the bumper.
6. When removing the factory bumper, there will be three plastic push pins that will need to be removed from the top of the bumper.
7. Remove the factory tow hooks if present.
8. Mount the Adaptive Cruise Control Module to the Horizon bumper. Use the ¼" x 1 ½" (item #5), ¼" x 1" bolts (#6), washers (#7) and nuts (#8) provided. Use the four plastic spacers (#9) between the adaptive cruise bracket and the Adaptive Cruise Plastic (#10).
9. Mount the Horizon front bumper to the frame. Reuse the factory bumper bolts and nuts for the top two holes. Use the ½" x 1 ¾" bolts (item #1), washers (#2), lock washers (#3) and nuts (#4) for the lower holes.
10. Mount the license plate using ¼" bolts (item #11).
11. There are two Flood Lights (item #13) and two Spot Lights (#14). It is recommended to mount the flood lights in the outside holes and the spot lights to the inside holes. **Note: For off road use only!**
12. **MAKE SURE ALL NUTS AND BOLTS ARE TIGHT!**

WARNING

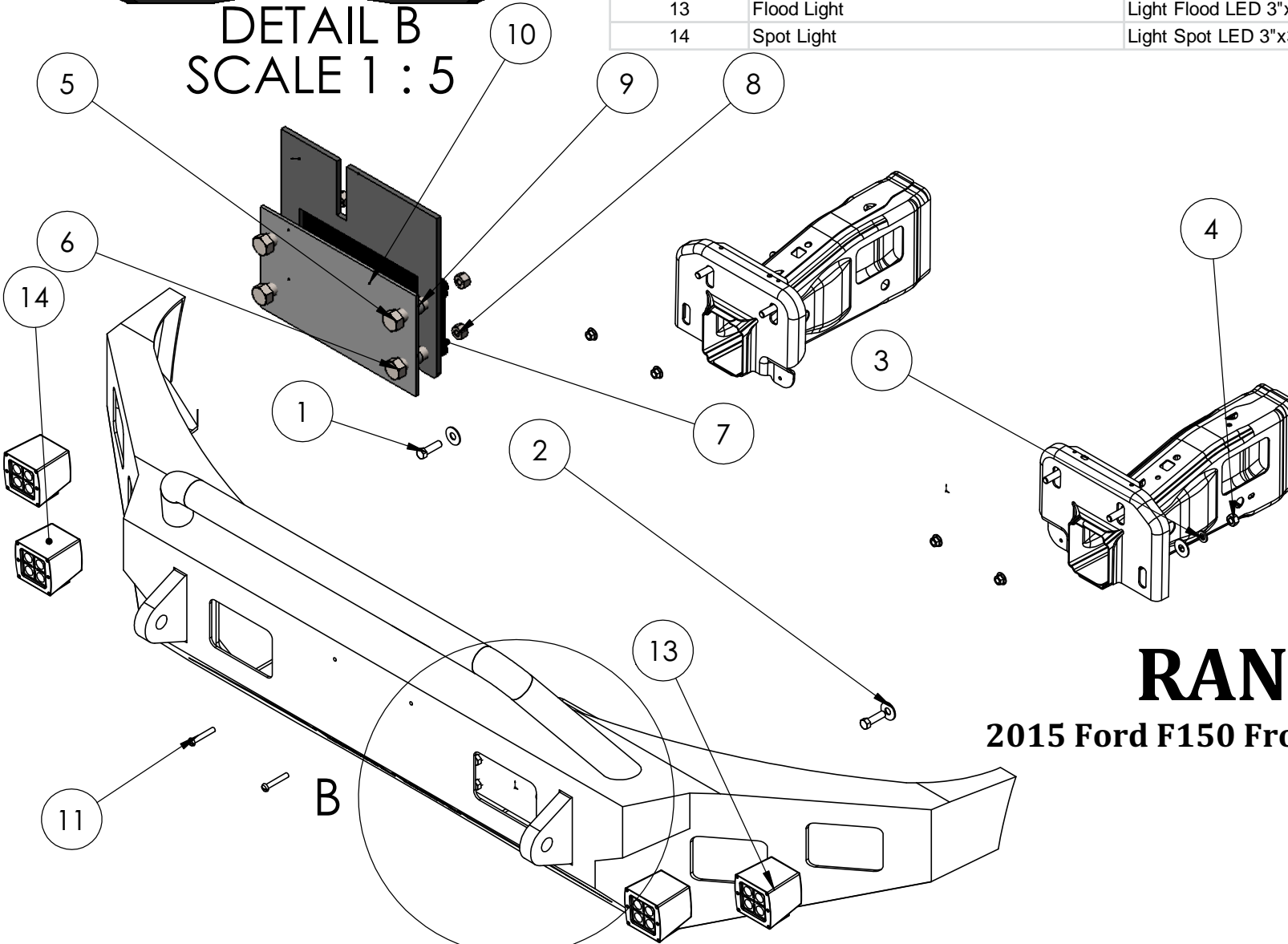
Special care should be exercised in the handling, storage and installation of Kaspar Ranch Hand equipment. The actual weight of each piece of equipment will vary depending on style and model. The weight of the equipment is sufficient in volume to warrant special care, assistance and in some instances, the use of mechanical equipment during the transfer and installation of the equipment. Do not assume a position directly under the equipment during installation. Be sure the equipment has been connected and stabilized during installation to prevent falling or shifting of positions. Periodically check tightness of bolts to make sure they are tight, and unlikely to fail.

BHF15HBP - Bolt Package for BHF15HBMT & BHF15HBMN

ITEM NO.	Part Description	Part Size	Quantity
1	Hex Head Bolt	1/2" - 13 x 1 3/4" Grade 8	2
2	Flat Washer	1/2"	4
3	Lock Washer	1/2"	2
4	Hex Nut	1/2" - 13	2
5	Hex Head Bolt	1/4" - 20 x 1 1/2"	3
6	Hex Head Bolt	1/4" - 20 x 1"	1
7	Flat Washer	1/4"	4
8	Keq Nut	1/4" - 20	4
9	Unthreaded Spacer (Plastic)	3/8" x 1/2" x .26" ID	4
10	Adaptive Cruise Plastic (FSF15HACP)	4" x 7 1/8"	1
11	Round Head Slotted Phillips Screws	1/4" - 20 x 3/4"	2
12	Poly Bag	6" x 10"	1
13	Flood Light	Light Flood LED 3"x3" 20W W/Harness -PR	1 pr.
14	Spot Light	Light Spot LED 3"x3" 20W W/Harness -PR	1 pr.



DETAIL B
SCALE 1 : 5



RANCH HAND

2015 Ford F150 Front Mounting Instructions