

Please see Web site for a better view of the photos.

Rally Armor recommends professional installation.

Rally Armor EVO mud flap set includes 2 rears and 2 fronts ("L" shaped)

Your mounting hardware consists of:

- 6 Clips (PolCl)
- 10 Washers (FenWash)
- 6 Short Stainless Screws (1SS)
- 4 Long Stainless Screws (2SS)
- 2 Spacers (1SP)

In order to complete this install for the rear mud flaps, you will remove the tires. The fronts can be completed by turning the steering wheel away from the side you are working on but removal of tires will facilitate installation.

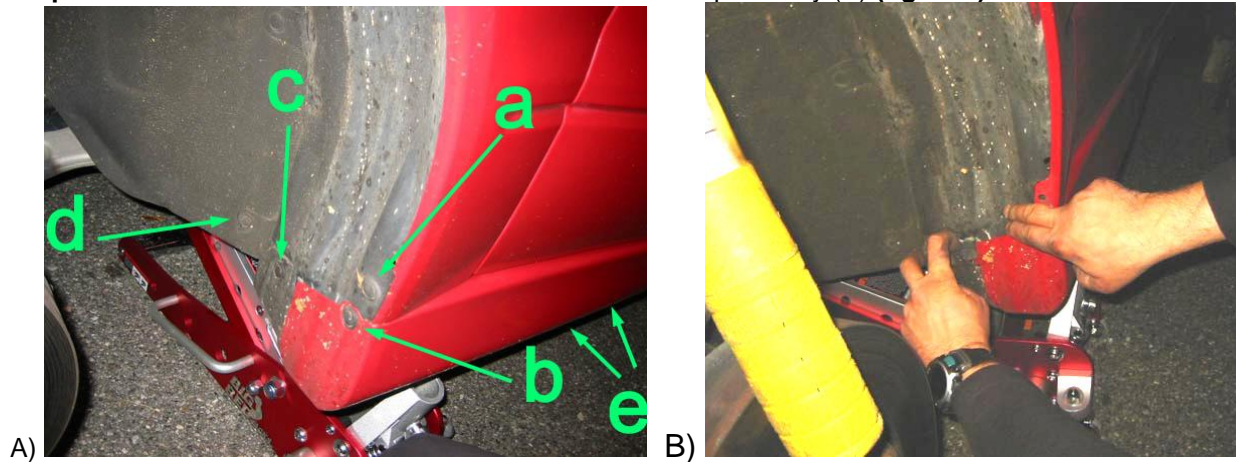
Note: Once the clips are placed over the front wheel wells, the flaps can be removed and bolted back on at will without having to remove the front tires.

FRONT MUD FLAP installation:

Step 1: Remove front wheel jack car up and place on sturdy jack stands. You may also install with the tires on and turned.

Step 2: Remove clips **A – C** then Unbolt **D** (fig. A).

Step 3: Remove two front screws from side skirt in order to pull away (**E**) (fig. A/B).



Step 4: Pull the side skirt down slightly and remove the liner slowly.

Cautionary Note: The liner tears easily so be careful and work slowly away from the clips.



C)

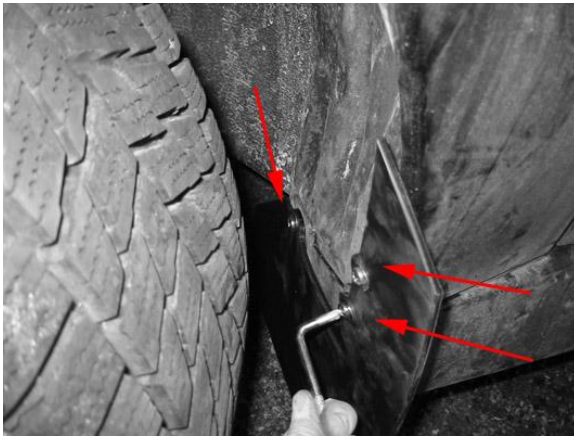


D)

Step 5: Place 3 clips over **A**, **B**, and **C** (note "B" is behind the side skirt).

Step 6: Replace liner as it was before (covering the clips) Bolt the 10mm wheel liner bolt back (**D**). Refer to the other side of the car if you need to recall how it is put back together. Carefully replace the liner as it was before the install to avoid rubbing.

Step 7: Bolt the mud flap as follows (note the long bolt on the side skirt bolt). Install the two side skirt screws as well.



E)



F)

Rear Flaps

Step 1: Begin by removing the rear wheel and placing the car on jack stands (fig. G) - if you can jack up the car enough to reach the inner bolt you may also choose to install without removing the tires.

Step 2: Remove the two rear bolts that hold the liner then prepare a long screw with a washer (fig. I).



G)



H)



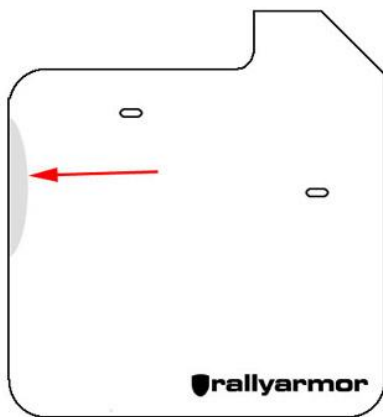
I)



J)

Step 3: Place rear spacer on the flap as shown and bolt up loosely (only enough to hold the flap). You will be adjusting this before you fully tighten.

Depending on your exhaust (aftermarket/OEM) and driving style you may opt to trim the rear passenger flap slightly (as shown below) in order to avoid any heat transfer issues from the exhaust pipe.



EVO Passenger Rear



K)

Step 4: Bolt on a short screw with a washer through the flap into the OEM clip on the bumper; leave loose. Adjust flap so it is perpendicular to the ground then tighten screws (fig. K). **Be sure the long screw does not interfere with anything from behind.**

Step 5: Replace tire and repeat for the other side.