

# INSTRUCTIONS FOR ADDING PRIMOS SOUNDS TO ALPHA DOGG™ AND TURBO DOGG™

Alpha Dogg™ Model# 3756

Turbo Dogg™ Model# 3755

## INSTALLATION:

### STEP 1 – Connect Alpha / Turbo Dogg Speaker to computer (PC or Mac)

- a) Turn off Alpha / Turbo Dogg Remote.
- b) Turn on Alpha / Turbo Dogg Speaker.
- c) Plug USB connection into speaker (Alpha Dogg located on back of speaker / Turbo Dogg located in battery compartment).
- d) Plug USB connection into computer.
- e) Some computers may notify of drive software installation and/or to open Removable Disk drive (may take a few seconds for computer to find drive).

Alpha Dogg:

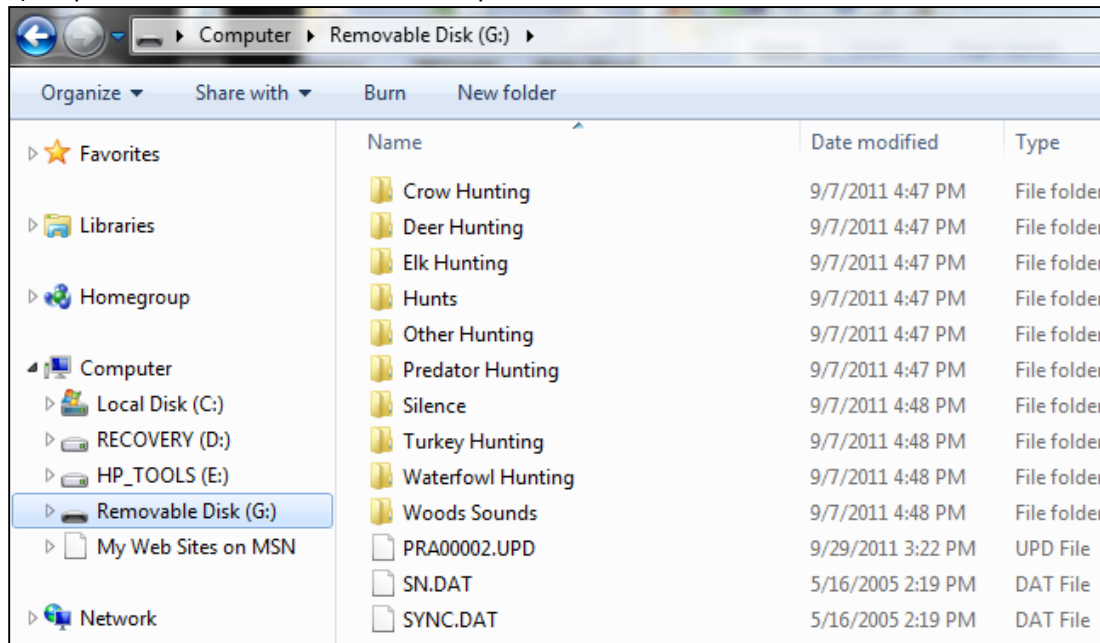


Turbo Dogg:

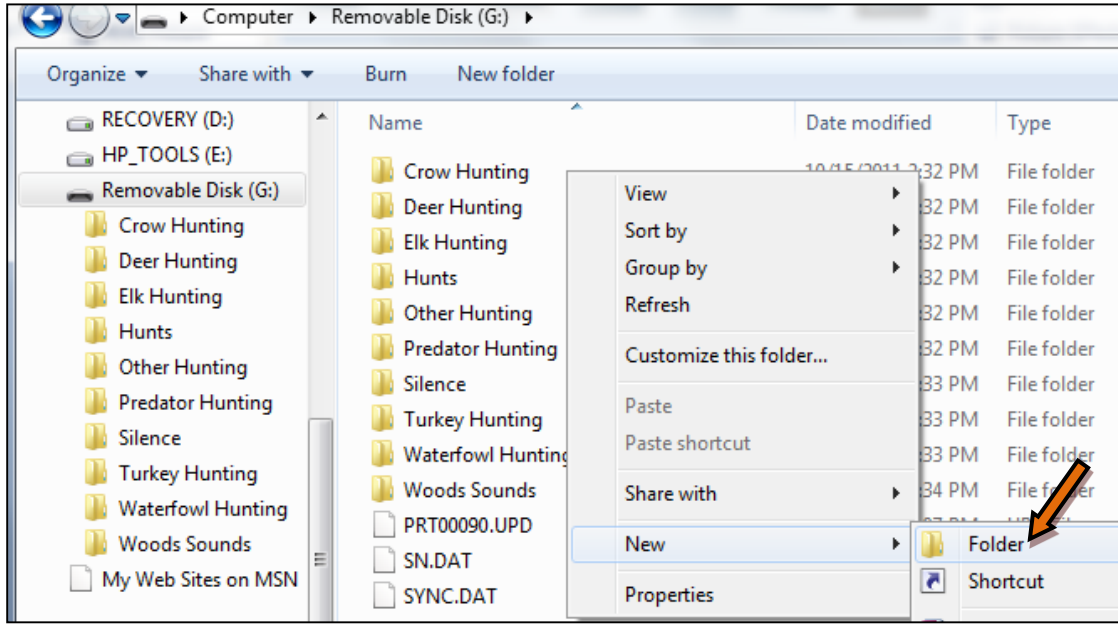


### STEP 2 – Opening Removable Disk and Creating New Subfolder

- a) Open Removable Disk drive on computer.



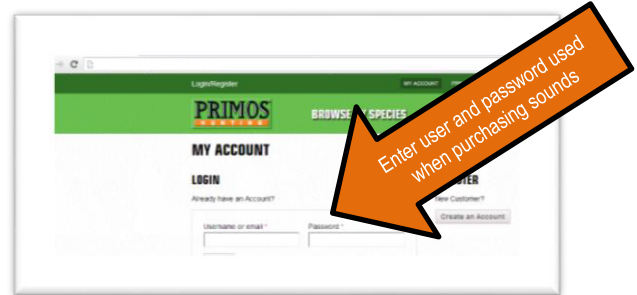
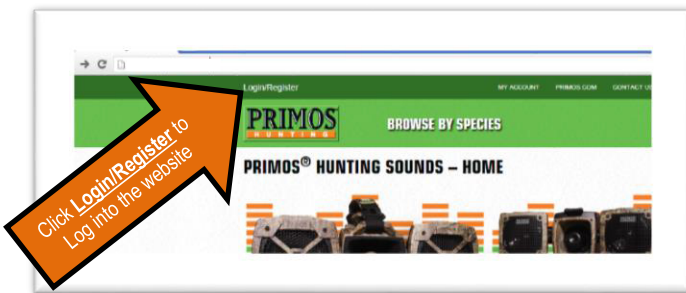
- b) Create new subfolder or place sound in existing folder or subfolder. You can also add new sounds to any of the existing folders EXCEPT the HUNTS folder. **IMPORTANT: DO NOT add sounds or subfolders to 'HUNTS' folder. 'HUNTS' folder is specially designed for EXPERT HUNTS. Only EXPERT HUNTS can be added to this folder.**



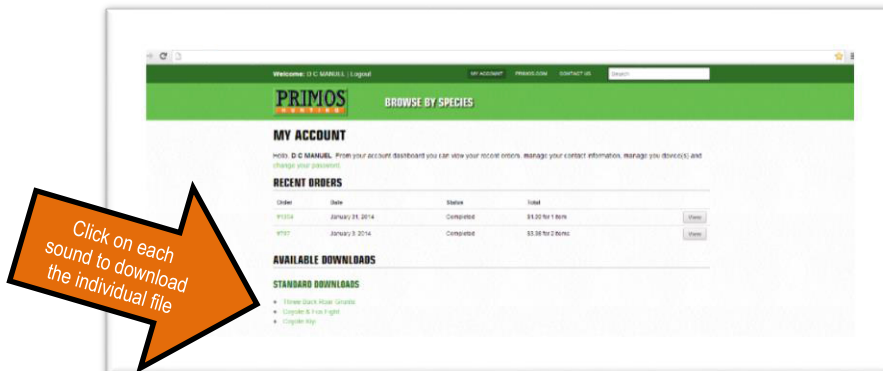
### STEP 3 – Installing Primos Sound from primos website

You should have received 2 emails from each order you placed at the sounds.primos website. The first email will inform you that the order is being processed and the 2<sup>nd</sup> will verify that the order has been completed and the sounds are now available to download from the website. All of your purchased sounds will be available from this website via the log in credentials you used to purchase them.

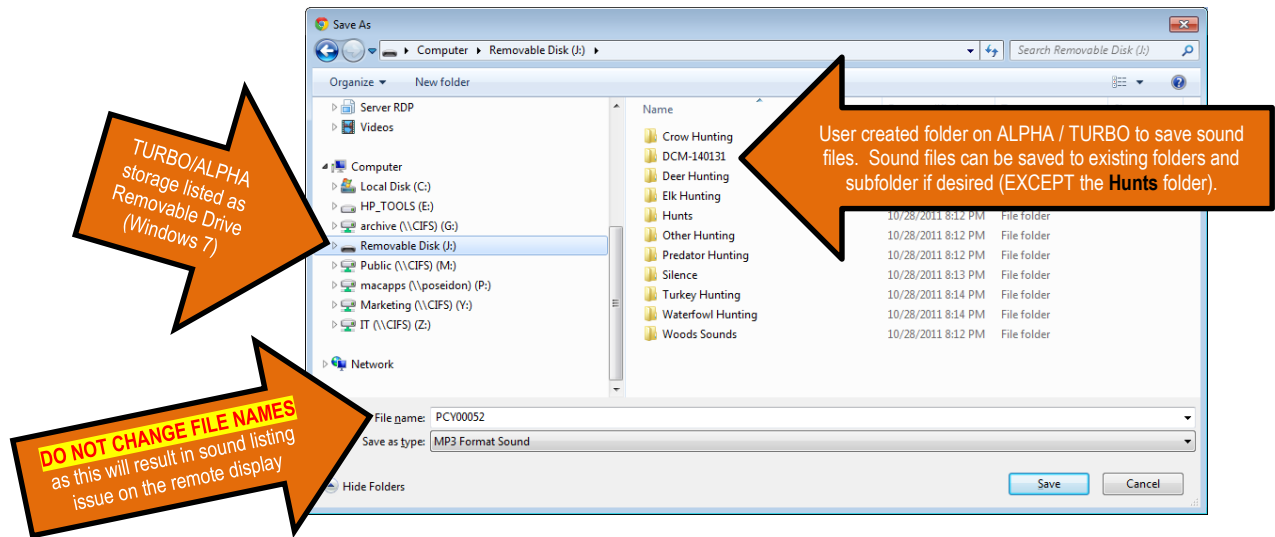
- a) Log into the **primos** website with the user name (email address) and password used to purchase the sounds (images below)



- b) Under the MY ACCOUNT page, will have a list of each order placed and a list of sounds available to be downloaded. Click on the desired sound to download it. Note that each sound must be downloaded separately (see image below).



- c) When a sound is selected for download, a dialog box to save the file will open (see image below). You can select to save the file to any location on your computer (Documents for example) or you can save the file directly to the folder location on the Alpha or Turbo Dogg storage created in STEP 2.



**IMPORTANT: DO NOT** add sounds to 'HUNTS' folder. 'HUNTS' folder is specially designed for EXPERT HUNTS. Only EXPERT HUNTS can be added to this folder.

**IMPORTANT NOTE:** Do **NOT** change file names of sound as this **WILL** affect EXPERT HUNTS and proper sorting and display of sounds on the remote. Editing the file names **WILL** result in incorrect listing of sound on the remote display.

**STEP 4 – Repeat STEP 3 for each sound file in AVAILABLE SOUNDS list that you would like to add to the ALPHA DOGG or TURBO DOGG call. When all desired sound(s) are added to the electronic call, proceed to STEP 5**

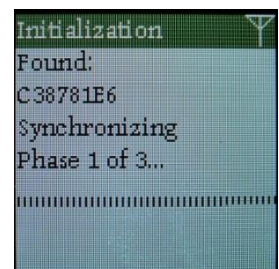
**STEP 5 – Safely Disconnect USB from Computer**

- Close Removable Disk Drive folder and safely disconnect USB by following computers instructions for Safely Remove Hardware and Eject Media.
- Disconnect USB cable from computer and disconnect from Alpha / Turbo Dogg Speaker.

**STEP 6 – Sync Alpha / Turbo Dogg remote with speaker**

*Note: This step may take approximately 10 minutes to perform. Keep remote and speaker together during syncing.*

- With speaker power on, turn on Alpha / Turbo Dogg remote.
- Remote will automatically sync with speaker and update new sounds by syncing phase 1 thru 3.
- Once sync is complete, 'Main Menu' will appear on remote. Remote and speaker are updated with sounds and ready for use.
- New sounds are located in sounds and folder you saved them in.





# Alpha & Turbo Dogg Instructions

## Alpha Dogg Model No. 3756

(Includes: Remote 3756-R and Speaker Unit 3756-S)



## Turbo Dogg Model No. 3755

(Includes: Remote 3755-R and Speaker Unit 3755-S)



Welcome to the Apex of Predator Calling Technology!

The Alpha & Turbo Dogg don't give you just individual sounds to choose from, they have Expert™ Hunts which allow you to have Randy Anderson and other Team Primos members actually calling for you! These are proven hunt sets that get dogs in!

These are the most powerful "No Distortion" speaker systems available. The powerful 25 watt digital amps produce more realistic, dynamic sound with No Distortion!

Simple to use Remote can be operated quickly with one hand and has a range of up to 200 yards. Remote sound list is displayed on easy-to-read LCD screen and sounds are organized by species such as coyote, fox, bobcat, deer, elk, etc.

The Alpha Dogg comes loaded with over 75 sounds and 8 complete Expert™ Hunts, while the Turbo Dogg comes with over 36 sounds and 4 complete Expert™ Hunts. Primos Professional Sound library allows you to add sounds and other newly released Expert™ Hunts.

Take the guess work out of "Speaking the Language" with the Alpha or Turbo Dogg! ~ Will Primos





## PLEASE READ CAREFULLY BEFORE USE

### IMPORTANT

For your protection, please carefully read these warnings, precautions and safety/operating instructions completely before operating this product. Follow these instructions closely and keep this manual for future reference.

### WARNING

To reduce the risk of fire, electrical shock or product damage/failure,

- Do not expose unit with the battery door open to rain, moisture, dripping or splashing. Do not open or close the battery door with wet hand. Completely wipe off water on unit and door before opening.

- Do not lay product on moist ground or submerge in water (this unit is designed for upright outdoor use).

- **DO NOT OPEN CASE HOUSING. UNINSULATED, 'DANGEROUS VOLTAGE' WITHIN PRODUCTS ENCLOSURE. DO NOT REMOVE HOUSING COVER. THERE ARE NO USER - SERVICEABLE PARTS INSIDE, REFER SERVICING TO PRIMOS® CUSTOMER SERVICE.**

- Only use batteries as specified in this user manual and install according to correct polarization. Failure to follow may result in leaking or exploding batteries, damage to product, fire or personal injury. Do not handle damaged or leaking batteries.

- Do not expose to extreme heat. Do not leave product and/or batteries exposed in direct sunlight inside a vehicle, or other contained environment for a long period of time.

- Only use accessories as recommended in this manual

### WARNING

Permanent hearing loss may result from long-term exposure to sound at high volumes. Speakers are capable of delivering sounds at loud volumes and high pitched tones. Under certain circumstances, exposure to such sounds can result in permanent hearing loss damage.

Reduce Risk of Hearing Damage by Following These Safety Guidelines Prior to using this product follow these steps:

- Always use speaker outdoors.

- Place speaker(s) facing away from you.

During use of this product follow these steps:

- Avoid walking in front of speaker.

- Keep maximum distance from speaker during use. Decrease volume when making adjustments to speaker position.

- Ringing in ears may indicate that sound levels are too high

- If you experience discomfort or ringing in ears, immediately discontinue using this product and consult a physician.

- With continued use at high volume and close proximity, your ears may become accustomed to the sound level, which may result in permanent damage to your hearing without any noticeable discomfort.

### CARE & CAUTION

- Transport and handle with care. Do not strongly shake, bump, hit, drop or otherwise cause impact to the product – can result in product malfunction or damage to key components. Additionally, damage to the case could result in imperfections to water-resistant properties.

- Take extra care when handling or using product in places with sand and dust. Sand, dust and foreign substances exposed to product, especially in extreme proportions, may result in poor speaker quality, damage to the external jacks or internal components and could cause malfunction of the product. If exposed to any of these elements, please carefully wipe off completely before continued use.

### MODIFICATION WARNING

You are cautioned that any changes or modifications not expressly approved in this manual could void your warranty of this equipment.

### OPERATING TEMPERATURE

- Recommended storage temperature range -10°F to 140°F

- Recommended operating temperature range 20°F to 120°F

### WARNING

To avoid possible product damage and/or injury, NEVER INSTALL DIFFERENT TYPES OF BATTERIES in the product at the same time. Failure to follow may result in leaking or exploding batteries, damage to product, fire or personal injury. Do not handle damaged or leaking batteries.

**NOTE: IMMEDIATELY REGISTER YOUR ALPHA or TURBO DOGG CALLER FOR WARRANTY PROTECTION!!!**

## ITEMS INCLUDED .

1. Speaker System
2. Long Distance Remote
3. Speaker Handle (Alpha Dogg only)
4. USB 2.0 Cable
5. Instruction Manual
6. Warranty Registration Card

## NEEDED TO OPERATE (not included) .

1. Eleven (11) "AA" Alkaline, Lithium or Rechargeable Batteries
  - 8 to be installed in the Speaker System
  - 3 to be installed in the Remote
2. Standard 3.5MM audio cable(s) (if using MOTION DECOY, Audio In (Alpha Dogg only) or Audio Out )

NOTE: Make sure you install batteries in both the Speaker System and Remote before first use. Then turn the Power On for both units.



NOTE: The Alpha Dogg requires installing the carrying handle out-of-the-box. This does NOT require tools and is a pressure fit design.



## ATTACHING REMOTE TO SPEAKER .

1. Line up raised are on back of remote with matching recessed area on speaker (Alpha Dogg – on back of speaker handle) (Turbo Dogg – on top of speaker).
2. Insert raised area on remote into recessed area and rotate remote 90 degrees to lock into position.
3. To remove, reverse these steps.

NOTE: Attaching remote to speaker is designed for storage. Primos does not recommend transporting remote attached to speaker in and out of the field as remote can be bumped and detach from speaker.

## REMOTE CONTROL BUTTONS – OVERVIEW

*NOTE: Remote control buttons are designed to activate command when button is completely pressed down on the remote. Buttons are set to heavy sensitive to help prevent accidental activation of remote control.*



**D (only Alpha Dogg)** - Factory programmed to control Motion DECOY (if motion decoy is connected to Decoy Port).  
*Operating TIP:* Can also be user programmed as a 'HOT' button in SETTINGS.

**Menu/Back** - Press to return to previous shown screen. Continued pressing will take you back to the Main Menu screen.

**HOT 1 (Alpha Dogg) & Decoy (Turbo Dogg)** - Performs pre-programmed action instantly [no matter what is playing or where you are in the menu (except Settings menu)]



- Alpha Dogg original factory setting is programmed to play KI-YI sound. Turbo Dogg Original factory setting is programmed to control MOTION DECOY.
- *Operating TIP:* Can be user programmed to control other functions in SETTINGS

**2 (only Alpha Dogg)** - Performs pre-programmed action instantly [no matter what is playing or where you are in the menu (except Settings menu)]

- Original factory setting is programmed to play Rodent Distress sound
- *Operating TIP:* Can be user programmed to control other functions in SETTINGS

**PLAY/SELECT** – Standard PLAY sound functionality. Also use to SELECT and SAVE settings

**SCROLL** – Standard UP/DOWN scroll functionality

  – Standard VOLUME up and down functionality.  
*Operating TIP:* Hold either button down to rapidly increase/decrease volume.

**PAUSE** – Press to PAUSE sound playing [Does not function in Settings menu]

**PWR BUTTON** – Located on back of the remote. Note: Must hold button down for 2 seconds to PWR OFF.

## SPEAKER SYSTEM BUTTONS/PORTS – OVERVIEW



**ALPHA DOGG SPEAKER - BACK**



**TURBO DOGG SPEAKER - BACK**

**AUDIO OUT** – Add external speaker (not included) for additional sound volume. External speaker rating must be 25watts or greater.

*NOTE: Requires standard 3.5MM audio cable not included*

**AUDIO IN** – Play custom sounds from external device like an MP3 player (not included).

*NOTE: Requires standard 3.5MM audio cable not included*

**USB** – Allows you to add sounds and update software using supplied USB cable. Note: Remote and Turbo Dogg USB is located in battery compartment.

**DECOY** – Operates on/off function of a motion decoy (not included).

*NOTE: Requires standard 3.5MM audio cable not included*

**PWR BUTTON** – Standard ON/OFF functionality



## SPEAKER PLACEMENT

PRIMOS recommends placing speaker within 50 yards of your location. Position speaker(s) facing away from your location. Coyotes are known to hang up at longer distances so keeping speaker within 50 yards allows for closer shots. Also place speaker to side of your location so animal is looking to the side of you and not in direct alignment with you.

**IMPORTANT NOTE:** If speaker is placed at long distances, on the ground, in thick cover, in under brush, or has obstructions between remote and speaker always check antenna signal. If antenna signal indicator does not appear on remote, raise speaker off ground or decrease speaker distance. If antenna signal indicator does not appear on remote, product may not operate properly.

## OPERATION INSTRUCTIONS

MAIN MENU		
<b>Sounds by Category</b>	All Sounds Crow Hunting Deer Hunting Elk Hunting Other Hunting Predator Hunting Turkey Hunting Waterfowl Hunting Woods Sounds	Use to find sounds installed on unit by the type of hunting. For example, enter 'Deer Hunting' folder to find all sounds installed on the unit that pertain to deer hunting. Enter the Sound Category of your choice and start playing sounds!  Sound Sub-Categories – Some Sound Categories have a lot of sounds, so we have included sub-categories to make it easier to read and navigate. For example, 'Predator Hunting' has the following sub-categories: Bird Sounds, Bobcat Sounds, Cougar Sounds, Coyote Locator Sounds, Coyote Sounds, Fawn Sounds, Fox Sounds, Other Sounds, Rabbit Sounds, Raccoon Sounds, Rodent Sounds, Squirrel Sounds and Wood Sounds.  You can also explore ALL SOUNDS in a sound list by species.
<b>My Favorite Sounds</b>	(create yourself)	This feature allows user to place your favorite sounds/most used sounds in a folder so they are quickly accessible. This folder can hold up to 25 sounds.
<b>Expert™ Hunts</b>		<i>Note: In general, HUNTS on this unit are a list of sound tracks that are combined in a specific sequence with predetermined 'silent space'. This allows the user to simply hit the PLAY button and the caller does the rest (just like your stereo playing an audio CD). Some HUNTS might be 1 minute long, other may 30 minutes, just depends on the type of hunting.</i>  This feature allows user to play Expert™ Hunts which are successful sets that Team Primos™ experts, such as Randy Anderson, have proven to be most effective. These are the same calling sequences the EXPERTS use successfully on their TV shows... No longer do you have to be the expert from day one, simply select one-of-many Expert Hunt™ sets and literally <u>let the experts do the calling for you!</u>

		<p><i>NOTE: When playing EXPERT™ HUNTS, when track is finished playing, caller will automatically start playing next track in hunt set. When last track of hunt set is finished, caller will stop playing. When you exit a playing hunt, track will remain playing until finished but hunt sequence will stop.</i></p>
<b>My Hunts</b>	(create yourself)	<p>Ok, so now you're confident enough to rival the Professionals! This feature allows you to combine your own individual sound tracks into a savable and repeatable Hunt.</p> <p><i>NOTE: Use EXPERT™ HUNTS or My Hunts for a more pleasurable hunting experience. Having predetermined calling sequences to play allows the hunter to keep their eye on the field/woods/animals instead of fooling around with the remote searching for individual sound tracks to play!</i></p> <p><i>When you exit a playing hunt, track will remain playing until finished but hunt sequence will stop.</i></p>
<b>Settings</b>	Audio In Backlight Battery Level Decoy Hot Keys Hunt Volume Info Sound Loop Speakers Stand Timer Theme	<p>These settings allow you to customize and personalize your caller to your own needs.</p> <p><b>Audio In</b> – Select audio method (only available on Alpha Dogg). Select ON to play sounds from external devices like an MP3 player. Select OFF to play sounds from remote. Note: sounds will play from remote if Audio In is ON, but speaker battery life will greatly be reduced.</p> <p><b>Backlight</b> – Set the brightness of the screen. Also, change the TIMEOUT, which is the seconds delay before the screen brightness lowers to save battery life.</p> <p><b>Decoy</b> – Select whether using a Primos Motion Decoy or other decoy. If using a Primos Motion Decoy, the screen will indicate the decoy is turned on or off.</p> <p><b>Hot Keys</b> - The Turbo &amp; Alpha Dogg are the first electronic callers that allow you to control the specific function of your 'HOT' Buttons on your remote. <b>HOT1, 2, and D</b> can all be programmed and used as HOT buttons. Choose from the following functions:</p> <ul style="list-style-type: none"> <li>○ Instantly play any [user selected] sound in sound library</li> <li>○ Instantly go to My Favorite Sounds list</li> <li>○ Instantly change volume level to predetermined level</li> </ul>

		<ul style="list-style-type: none"> <li>○ When motion decoy is connected to Decoy Port, control decoy motion</li> </ul> <p><b>Hunt Volume</b> – Select ‘User’ to always manually control your own sound level. Selecting ‘Expert’ allows the predefined sound levels in the ‘Expert™ Hunts’ control the volume when each new sound track starts play (Note: You can still manually adjust the sound with this feature selected, it’s just the sound will start out playing at the predefined level).</p> <p><b>Info</b> – Displays ‘Serial Number’ Speaker (needed to purchase additional sounds and Expert™ Hunts and update software) and ‘Software Version’</p> <p><b>Sound Loop</b> – Select ‘On’ and caller will continuously loop playing each individual track until sound is paused. Select ‘Off’ and the unit will play each sound track once and then automatically stop.</p> <p><i>NOTE: When playing HUNTS, when an individual track is finished playing, caller will automatically start playing next track in hunt set until the HUNT reaches the end.</i></p> <p><b>Speakers</b> – Select which speakers you want active (only available on Alpha Dogg)</p> <p><b>Stand Timer</b> – This feature operates like a ‘stop watch’ and counts up the amount of time. Hunters use these to keep track of how long they’ve been hunting or in-between calling sequences, etc.</p> <p><b>Theme</b> – Controls the color of the remote screen. Current options are the standard ‘Primos’ green and ‘Night’ which is red for improved clarity of reduced risk of spooking animals at night!</p>
--	--	---

**. DESCRIPTION OF EXPERT™ HUNTS INCLUDED .**

**EXPERT™ COYOTE HUNTS BY RANDY ANDERSON:**

These expert hunts were designed by me Randy Anderson to call in coyotes, but don't be surprised if other predators come in to the sounds like bobcats and fox. These hunts can be used any time of the day or night, time of year, in any part of the country and under most weather conditions. For instance, even though there are probably no jackrabbits in Alabama that sound still works good. The denning and territorial sets you would think would work the best during the spring and summer when the coyote pups are being born and raised, but you will find that coyotes will respond to these sets any time of the year. Coyotes mate in most parts of the country anywhere from January through March but the mating set can work any time of the year because coyotes are curious. I set these calling sets up just as if I'm sitting there with you doing the calling. The sets always start with some kind of howl or howls, because after calling now for over 42 years I find it doubles my chances to get coyotes in. These sets are set up as if no coyotes are responding, so the sets continue up to approximately 30 min. After the set ends and all of a sudden coyotes start howling you can keep calling by starting a different set or by using one of your favorite sounds. The two hot buttons are set on KIYI and rodent. Let’s say for example during one of the sets you have the fawn in distress running at a loud volume and a coyote surprises you and is just standing out there at 200 yards, you can go right to the hot button that is set on the rodent and try to coax them in. Or within

seconds after the first interrogation howl you have five coyotes on a dead run coming right at you at 50 yards {like we had happen on the Truth 8 DVD} you can hit the hot button set on the KIYI and try to slow or stop the charging coyotes for better shot opportunities {we killed 3 of those coyotes}. Any time during these sets you can pause the caller if you want to wait longer between sounds or forward it to later in the set or even go back to a previous sound. Let's look at the 6 calling sets I built for you.

#### **Coyote cottontail set:**

Most predator callers don't wait long enough after they howl to let the coyotes respond by howling back to you or coming in. So after the interrogation howls we will wait 2 min. You can pause for a longer wait if you like. I like to answer the initial howls with more howls because it sounds more realistic and can rev up the coyotes more. During the cottontail distress be ready with the hot buttons. I usually do pup or coyote distress at the end of sets if nothing else works, but you must remember any time you change sounds during sets you must give that coyote time to get there if he has hung up to your previous calling.

#### **Coyote jack set [Alpha Dogg Only]:**

This time after the interrogation howls I follow with female invitation howls. When hunting small areas or if you are going back to the same spots you have called before, it's good to change things up a little. After using my initial distress for a while I like to follow up with a second distress sound to help move the coyote along. On this set I go to the baby jack.

#### **Coyote fawn set [Alpha Dogg Only]:**

After the initial female invitation howls I go to the serenade howls. Remember the coyotes will often answer back to the serenade howls any time of the day but can also be coming on the run to them like you see on my DVD'S, so be ready. Callers need to use the fawn sounds more because I've even called in coyotes and does in the dead of winter. You can also howl later in the sets like we do on this one with the young answer howl. We even use a domestic pup distress this time to try and shake that ole coyote loose.

#### **Denning set:**

Coyotes give birth to pups usually between the end of March and the beginning of June. We start this set out with female invitation howls because these howls from the mother coyote will gather her pups for whatever reason, let's say to take them hunting for prey. So be ready after these howls for some higher pitched pup answer howls or the pups themselves coming in. Don't forget the adult male coyote, he may also respond. The pup in distress or pup frenzy sounds not only will call in mom and dad coyote, but will also call in pups and other coyotes not in the immediate family group.

#### **Territorial set:**

Coyote adult breeding pairs stake out an area and try to protect it from other coyotes mainly because they don't like other coyotes stealing their rabbits or prey animals that they will eventually be feeding their pups. They will warn other coyotes with challenge howls first and then come in to actually run these intruders off physically. So on this set we are imitating two coyotes challenging back and forth and then battling, thus the KIYI sounds. Don't be surprised if during any of these calling sets you here a coyote challenge for you. Then you can opt out of the set you are in and go right to this set.

#### **Mating set:**

We start this set with a female coyote howling and then answer her with male interrogation howls. In the real coyote world the males have to find the females either by just roaming around or coming to her howls. So we are trying here to drum up this scenario. When the female coyote gets physically ready to breed, she will then really start inviting the male in. If the male is there and tries to breed her too early she can make a whimpering sound. We also put in KIYI's because other males can come in to her also and battle her. The crazy thing about this is you don't just call in the males; you can also call in other females and all kinds of coyotes. On one of my DVD's you can watch 13 coyotes running all around me.

If you have any questions you can purchase my Mastering the Art DVD for more instruction. Thanks and Good Calling. RANDY ANDERSON



## **. UPLOADING NEW SOUNDS OR EXPERT™ HUNTS (PC & MAC COMPATIBLE) .**

1. Turn power on speaker and computer. Using USB cord, connect cord to USB Connection on back of Speaker [Alpha Dogg] and inside battery compartment [Turbo Dogg]. Then connect USB cord to computer.
2. Alpha/Turbo Dogg folder should automatically pop up. Simply copy and paste sounds to the sound folder of your choice.
3. Disconnect USB from computer by following USB removal instructions on your computer.
4. Remove USB cable for Speaker.
5. Leave Speaker on and turn on Remote. May take a few seconds for Remote to download updated information from Speaker.
6. Caller is ready for use.

## **. CARING FOR YOUR CALLER .**

Your caller contains sensitive electronic components that can be permanently damaged if exposed to excessive shock or vibration. To minimize the risk of damage to your unit, avoid dropping your unit and operating it in high-shock and high-vibration environments.

- Do not store your unit where prolonged exposure to extreme temperatures can occur, because it can cause permanent damage.
- Do not expose to prolonged exposure to moisture. This can cause this unit to malfunction.
- Never use a hard or sharp object to operate this unit or damage may result.

### **Cleaning the Unit:**

The Alpha/Turbo Dogg is constructed of high-quality materials and does not require user maintenance other than cleaning. Clean the outer casings (not the screen) using a cloth dampened with a mild detergent solution, and then wipe dry.

Avoid chemical cleaners and solvents that can damage plastic components.

### **Cleaning Screen:**

Clean the screen with a soft, clean, lint-free cloth. Use water or eyeglass cleaner, if needed. Apply the liquid to the cloth, and then gently wipe the screen.

**Caution:** The caller is water resistant - not waterproof.

## **. TROUBLE SHOOTING .**

Check batteries in speaker and remote control if caller is not functioning properly.

Check to make sure antenna signal indicator appears on remote if caller is not functioning properly. Move remote closer to speaker until antenna signal indicator appears on remote.

## **. FCC STATEMENT .**

Changes not expressly approved by Primos could void the user's authority to operate the equipment.

Note: This equipment has been tested and found to comply with the limits for a Class B digital device, pursuant to Part 15 of the FCC Rules. These limits are designed to provide reasonable protection against harmful interference in a residential installation. This equipment generates, uses and can radiate radio frequency energy and, if not installed and used in accordance with the instructions, may cause harmful interference to radio communications. However, there is no guarantee that interference will not occur in a particular installation. If this equipment does

cause harmful interference to radio or television reception, which can be determined by turning the equipment off and on, the user is encouraged to try to correct the interference by one or more of the following measures:

- Reorient or relocate the receiving antenna.
- Increase the separation between the equipment and receiver.
- Connect the equipment into an output on a circuit different from that to which the receiver is connected.
- Consult the dealer or an experienced radio/TV technician for help.

This product complies with FCC OET Bulletin 65 radiation exposure limits set forth for an uncontrolled environment. Operation is subject to the following two conditions: (1) This device may not cause harmful interference. and (2) this device must accept any interference received, including interference that may cause undesired operation.

## **SOFTWARE LICENSE AGREEMENT**

BY USING THE PRIMOS ALPHA DOGG, YOU AGREE TO BE BOUND BY THE TERMS AND CONDITIONS OF THE FOLLOWING SOFTWARE LICENSE AGREEMENT CAREFULLY. Primos grants you a limited license to use the software embedded in this device (the "Software") in binary executable form in the normal operation of the product. Title, ownership rights, and intellectual property rights in and to the software remain in Primos.

You acknowledge that the Software is the property of Primos and is protected under the United States of America copyright laws and international copyright treaties. You further acknowledge that the structure, organization, and code of the Software are valuable trade secrets of Primos. You agree not to decompile, disassemble, modify, reverse assemble, reverse engineer, or reduce to human readable form the Software or any part thereof or create any derivative works based on the software. You agree not to export or re-export the Software to any county in violation of the export control laws of the United States of America.

## **REGISTER YOUR ALPHA DOGG CALLER**

1. It is very important to register your caller. This activates your warranty, allows you to download latest software updates, allows you to download sounds and Expert™ Hunts, and keeps you updated with latest information on your caller.
2. To register your caller visit primos. *Note: You will need to include the serial number of the caller. It is located inside the battery compartment.*

## **ONE YEAR SERVICE GUARANTEE**

**You MUST register your Alpha or Turbo Dogg to receive warranty protection!**

### **Up to 1 YEAR LIMITED WARRANTY**

Primos® Hunting ("Primos") warrants this product to be free from defects in workmanship and materials, under normal use and conditions, for the time periods and terms as set forth below. According to this Limited Warranty Primos® will, at its discretion, (a) repair the production using new or refurbished parts or (b) replace the product with a new or refurbished product (product that has been returned to its original specifications). In the event of a defect, these are the exclusive remedies available to the original consumer purchaser only and is not assignable or transferable.

**Terms: You must register your product to receive warranty protection. You MUST keep a receipt for "Proof of Purchase" for any warranty claims on your product.**

### **- Limited 1 YEAR WARRANTY\*\***

For a period of 1 year from original date of purchase Primos® will repair or replace the product, at its discretion, if service is required for any reason of any defect or malfunction.

**Limitations:** This warranty is valid only if the product is used for the purpose for which it was designed. It does not cover: 1) products which have been damaged by negligence/misuse (*including, but not limited to, improper storage, battery leakage and water damage caused by submersion*), accident or which have been modified or repaired by unauthorized persons; 2) cracked or broken housing of units damaged by excess heat or impact/force; 3) damage caused by wild animals 4) the cost of shipping this product to the factory for service and its return to you. This warranty is valid only in the United States of America. Any applicable implied warranties are also limited to 180 days, and Primos® will NOT be liable for consequential damages.

### **Instructions:**

In the event warranty service is needed, please contact Primos® Customer Service at 601-879-9323 or [service@primos.com](mailto:service@primos.com).

- 1.** Remove batteries from product and pack in well-padded or highly protective box. Primos® will NOT be responsible for damage incurred in returning product for repair.
- 2.** Send product prepaid to: Bushnell Outdoor Products, ATTN: Lab Repair, 9200 Cody, Overland Park, KS 66214.

# INSTRUCTIONS FOR ADDING PRIMOS SOUNDS TO BOSS DOGG™, ALPHA DOGG™ AND TURBO DOGG™

Boss Dogg™ Model# 3757

Alpha Dogg™ Model# 3756

Turbo Dogg™ Model# 3755

## INSTALLATION:

### STEP 1 – Connect Boss / Alpha / Turbo Dogg Speaker to computer (PC or Mac)

- a) Turn OFF Boss / Alpha / Turbo Dogg remote.
- b) Turn ON Boss / Alpha / Turbo Dogg Speaker.
- c) Plug USB connection into speaker (Boss Dogg/ Alpha Dogg located on back of speaker. Turbo Dogg located inside the battery compartment).
- d) Plug USB connection into computer.
- e) Some computers may notify of drive software installation and/or to open Removable Disk drive.

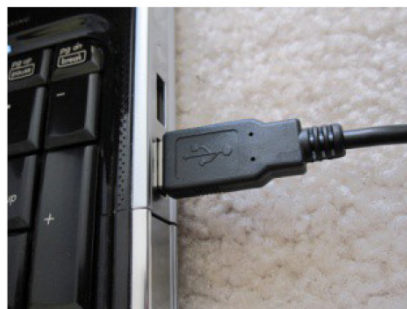
**NOTE:** It may take a few seconds for your computer to find the Removable Disk drive.



Boss Dogg:

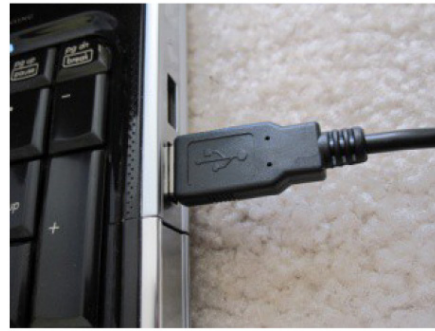


Alpha Dogg:

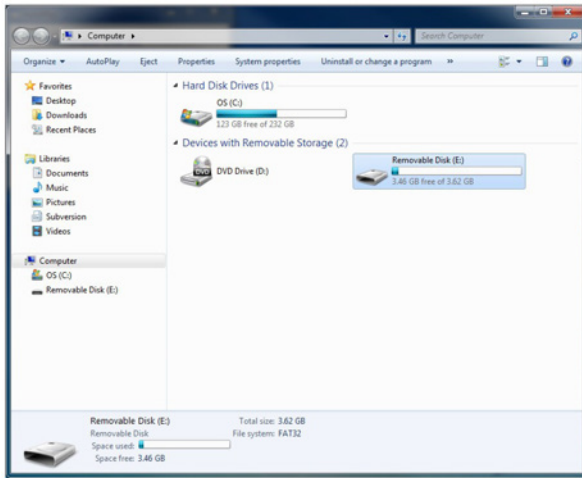




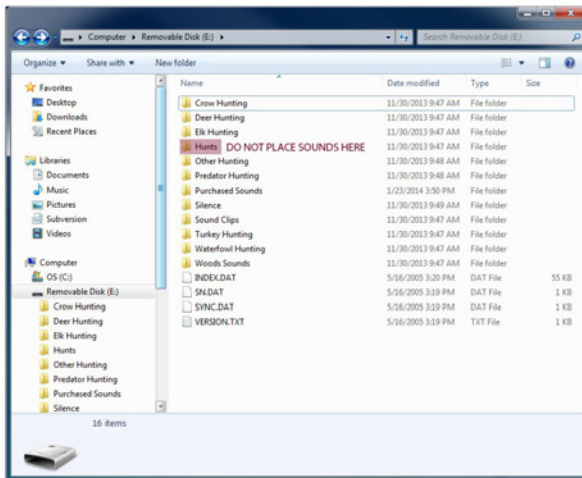
Turbo Dogg:



## STEP 2 – Opening Removable Disk and Creating New Subfolder



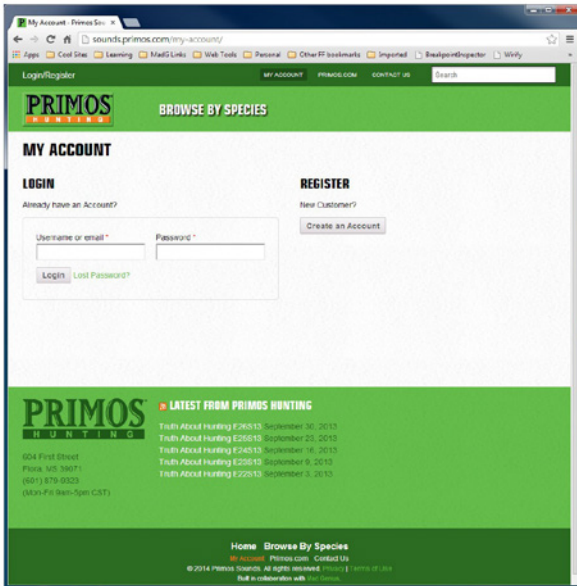
a) Open Removable Disk drive on computer.



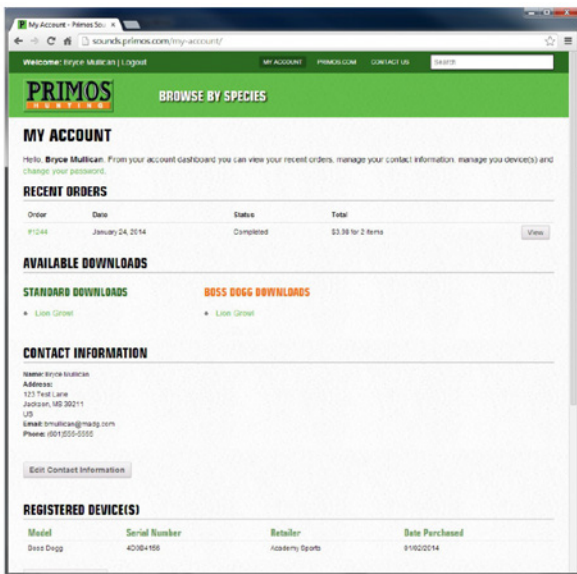
b) Create a new subfolder (optional) or place the sound in an existing folder or subfolder.

**WARNING: DO NOT add sounds or subfolders to the “Hunts” folder. The “Hunts” folder is specially designated for EXPERT HUNTS ONLY.**

## STEP 3 – Installing Primos Sounds



a) Log in to sounds.primos using the login information created during the checkout process or during account registration prior to purchase.



b) Once logged in you will be presented with the “My Account Dashboard”. From here you will see a list of each order placed (Recent Orders) and a list of sounds available to be downloaded (Available Downloads). In order to download sounds for the Boss Dogg™ you must have a Boss Dogg™ serial number registered under “Registered Device(s)”. You can find the serial number by looking in the battery compartment of your caller.™ Boss Dogg™ files will be available under “Boss Dogg™ Downloads”. Alpha Dogg™ and Turbo Dogg™ downloads will be available under “Standard Downloads”. Click on the desired sound to begin downloading it.

**NOTE: Each sound will be downloaded individually.**

**WARNING: “Standard Downloads” will NOT work on the Boss Dogg™ device. You MUST**

**add your Boss Dogg™ serial number under “Registered Device(s).” The “Boss Dogg Downloads” will then be available.**

c) Downloading of files may vary from computer to computer, as well as from browser to browser. You may be prompted to save the file to a specific location. If so DO NOT change the file name. You may save the file to any location on your computer or directly to the Boss Dogg™, Alpha Dogg™ or Turbo Dogg™ device.

**WARNING: DO NOT change/rename sound files. This may result in the sound not being listed on the remote display correctly or can keep the sound file from working at all.**

**WARNING: DO NOT add sounds or subfolders to the “Hunts” folder. The “Hunts” folder is specially designated for EXPERT HUNTS ONLY.**

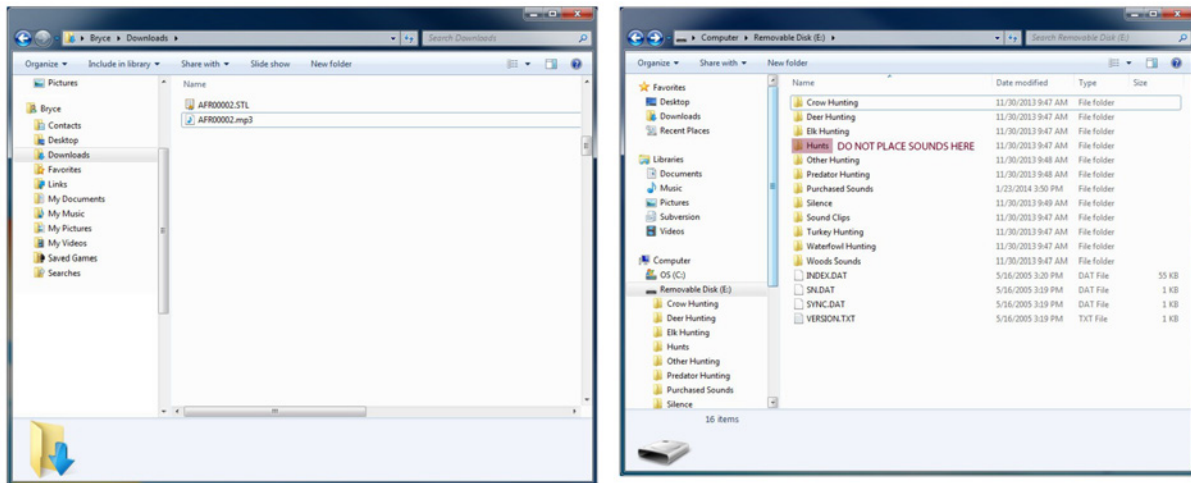
d) Repeat **STEP 3** for each sound file that you would like save to your computer or directly to the device.

□ **NOTE:** If you have trouble downloading Boss Dogg sounds & receive an error that states “**something went wrong please try again. If the problem persists, please contact customer support. ERROR: FAILED TO ENCRYPT FILE**”, go back to “REGISTERED DEVICE” located in your sounds account to be sure you entered the serial number correctly. Be sure there are no letter o’s, the format can only have zero’s. Once the serial number entry is corrected, Boss Dogg sounds should download.

e) **IF** you chose to save the sound files directly to the Boss Dogg™, Alpha Dogg™ or Turbo Dogg™ device then proceed to **STEP 5** to complete the process. Otherwise continue to **STEP 4**.

#### **STEP 4 – Copying Sound Files onto the Boss / Alpha / Turbo Dogg Speaker**

- Open the file location where you saved or downloaded the files.
- Copy and Paste the sound files to the desired location.
- Once you have copied the sound files to the Boss Dogg™, Alpha Dogg™ or Turbo Dogg™ device continue to **STEP 5** to complete the process.



**WARNING: DO NOT add sounds or subfolders to the “Hunts” folder. The “Hunts” folder is specially designated for EXPERT HUNTS ONLY.**

#### **STEP 5 – Safely Disconnect USB/ Removable Disk from Computer**

- Close Removable Disk Drive folder and safely disconnect USB by following computers instructions for Safely Remove Hardware and Eject Media.
- Disconnect USB cable from computer and disconnect from Boss Dogg™, Alpha Dogg™, or Turbo Dogg™ Speaker.

## **STEP 6 – Sync Boss/Alpha/Turbo Dogg Remote with Speaker**

- a) With speaker power on, turn ON Boss / Alpha / Turbo Dogg Remote.
- b) Remote will automatically sync with speaker and update new sounds by syncing phase 1 thru 3
- c) Once sync is complete, “Main Menu” will appear on Remote. Remote and speaker are now updated with your purchased sounds and ready for use.
- d) New sounds will be located in “Sounds” and folder you saved them in from **STEP 3**.

**Note:** This step may take approximately 10 minutes to perform. Keep remote and speaker together during syncing.