

Part Number	Air Gap	Part Number	Air Gap	Part Number	Air Gap
91261	0.030" (1)	91641	N/A	91847A	N/A
91266	0.030" (1)	91643	N/A	91941	N/A
91281	0.030" (1)	91661	N/A	91942	N/A
9AC-181	0.030" (1)	91662	N/A	9HO-141	N/A
9AC-181V	0.030" (1)	91741	N/A	9MR-145	N/A
91481	0.030" (1)	91761	N/A		
91482	0.030" (1)				
<ul style="list-style-type: none"> N/A - IGNITOR II MODULE AND MAGNET SLEEVE AIR GAP IS NOT ADJUSTABLE. (1) - IGNITOR II AND MAGNET SLEEVE AIR GAP CAN BE ADJUSTED ANYWHERE BETWEEN 0.010" AND 0.050". 					

Ignitor® II

ELECTRONIC IGNITION

12-VOLT NEGATIVE GROUND INSTRUCTIONS

GENERAL INFORMATION

- IMPORTANT: Read all instructions before starting installation.
- DO NOT USE WITH SOLID CORE SPARK PLUG WIRES.
- The Ignitor II ignition can be used in conjunction with most ignition coils rated at 0.45 ohms or greater.
- All external resistors must be removed to achieve optimum performance from the Ignitor II ignition system.
- The Ignitor II is compatible as a trigger for most electronic boxes.

DISTRIBUTOR DISASSEMBLY

PRIOR TO INSTALLATION TURN IGNITION SWITCH OFF OR DISCONNECT THE BATTERY

- Remove the distributor cap, and rotor. Do not disconnect spark plug wires. Examine cap and rotor for wear or damage. Replace as needed.
- Disconnect the point wire from the negative (-) terminal of the coil.
- Remove the point wire, point, and condenser from the distributor.
- The Ignitor does not require any modification to the distributor. Therefore the point, condenser and hardware can be used as backup.
- Clean all dirt and excess oil from the breaker plate and point cam.

IGNITOR II INSTALLATION

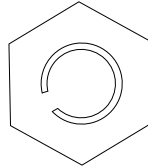
- Part number 91261 & 91266 only:** See Figure 1 to insure that you are installing the correct Ignitor kit.
- Install the Ignitor II module in the same manner as a set points. Secure in place using the provided hardware. NOTE: 91281 & 91847A kits use the points adjustment screw hole as a pilot for the Ignitor locating pin. Confirm the mounting plate is flat and fits without any modifications.
- Vacuum advance distributors only:** If the distributor ground wire was removed during the installation process be sure it is re-attached securely. **NOTE: If the ground wire is missing, one needs to be installed and attached from the point breaker plate to the distributor housing.**
- Insert the Ignitor black and red wires through the distributor housing verifying the grommet is seated properly.
- Place the magnet sleeve over the distributor shaft, and onto point cam. Press down firmly to insure magnet sleeve is fully seated. **NOTE: 91281 kits only: Magnet sleeve must be level with Ignitor II module on top. See Figure 2.**



6. Set the air gap between the module and magnet sleeve using the provided plastic feeler gauge (0.030" thick). This done in the same manner as points.
7. Reinstall the rotor, and the distributor cap. Make sure all spark plug wires are securely attached.
8. See Wiring Instructions.

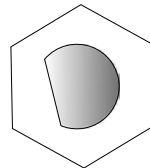
FIGURE 1

Ignitor 91261 fits distributors with a hollow shaft and a notch cut into the top of the shaft.



91261
BIRDSEYE
VIEW

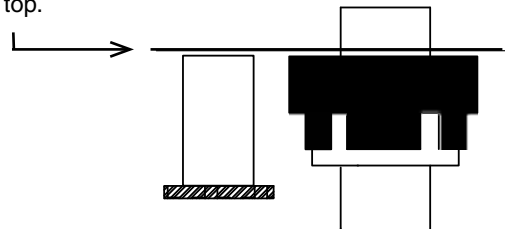
Ignitor 91266 fits distributors with a solid shaft and a flat side ("D" shape).



91266
BIRDSEYE
VIEW

Figure 2
(91281 Kits Only)

Magnet Sleeve
Must be level with
Ignitor on top.



WIRING INSTRUCTIONS

1. The Ignitor II ignition can be used in conjunction with most ignition coils rated at 0.45 ohms or greater. For optimum performance purchase and install the Flamethrower II high performance coil.
2. Attach the black Ignitor II wire to the negative coil terminal. Attach the red Ignitor II wire to the positive coil terminal. (See Figure 3)

A. Recommended Installation: Many vehicles came equipped with ballast resistor or resistance wire. To achieve optimum performance from the Ignitor II ignition system, we recommend removal of these components.

- To remove a ballast resistor, (normally white ceramic blocks 3 to 4 inches long), disconnect all wires on both ends of the ballast resistor. Remove the resistor from the vehicle and splice the disconnected wires together at a single point.
- To remove a resistance wire, trace the coil power wire, which was previously connected to the positive coil terminal, back to the fuse block. Bypass this wire with a 12-gauge copper stranded wire.

B. Alternative Installation: The Ignitor II can also be installed in applications retaining the ballast resistor or resistance wire.

- Attach the Ignitor II black wire to the negative coil terminal. Attach the Ignitor II red wire to the ignition side of resistance, or any 12 volt ignition power source.

3. Check to insure that the polarity is correct, and that all connections are tight.
4. Re-connect the battery.
5. Perform the Power and Ground tests. Refer to the Power and Ground test procedure.
6. Start the engine and allow it to reach normal operating temperature. Check ignition timing, and adjust to the desired setting.

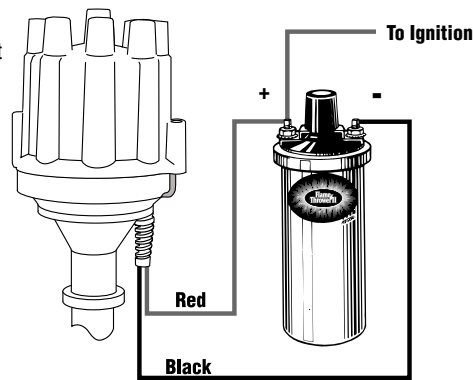


FIGURE 3
(WITHOUT EXTERNAL RESISTOR)

POWER & GROUND TESTS

It is imperative that the power and grounds be checked as part of the installation procedure. After installing the Ignitor module and the distributor and with the distributor in the engine, use a digital multi-meter to measure the resistance from the aluminum plate holding the module to battery (-), the net resistance must be less than 0.2 ohms. (Set meter to lowest ohms setting). The net resistance is the meter reading minus the resistance of the meter leads. If the net resistance is greater than 0.2 ohms, the source of the faulty ground must be found and fixed. Usually the source of the bad ground is easily found by holding one probe on an original location and moving the second probe toward the static probe. Where the resistance drops identifies the source.

Maximum resistance from Ignitor plate to battery negative terminal.	0.2 ohms
---	----------

EXAMPLE:

Resistance from Ignitor plate to battery negative (-) terminal.	0.4 ohms
Resistance of meter leads	0.2 ohms
After subtracting meter lead resistance, your net resistance is:	0.2 ohms

VOLTAGE TEST

1. (Do not disconnect wires from Ignition coil). Place ignition switch in the "off" position.
2. Connect a jumper wire from negative (-) terminal of the coil to a good engine ground.
3. Connect the voltmeter red lead to the positive (+) terminal of the coil and the black lead to a good engine ground.
4. Turn the ignition switch to the "on" position and note voltage reading on the voltmeter. Quickly read the voltage and turn ignition "OFF". Leaving ignition "ON" for an extended period could result in permanent damage to the Ignitor.
5. SEE CHART BELOW FOR SPECIFICATIONS.

Note: Low voltage can be caused by poor connections, poor contacts in the ignition switch, ballast resistor, and or a resistance wire in the wiring harness (Factory Installed).

	Minimum	Maximum
Ignition Switch "ON"	8.0V	N/A
Cranking	8.0V	N/A
Engine Running	N/A	16.0V