



# IN THE OUTDOORS

OVERLANDING  
CATALOG



Our mission is To Inspire and Empower People To ADVENTURE. Memories keep driving the next ADVENTURE, which fuels the passion and continues inspiring. We know what you need and have the right gear to get you there. We're a passionate, very experienced off-road team with more than 70 years of combined experience within the off-road community. Our knowledge in desert wheeling, rock crawling, or exploring in remotes parts of the US & Mexico goes behind every product we make. Don't let bad products get in the way of enjoying your adventure.

***To Inspire and Empower  
People To ADVENTURE***





# ROOF TOP TENTS





GO  
FURTHER  
WITH  
THE  
BEST



# GOING NOMADIC

Our Nomadic line of Tents, Annex's & Awnings are the best of the best. We use the finest materials to ensure nothing comes between you and your adventure. Our Nomadic tents start with a double insulated one-piece diamond plate frame featuring marine-grade stainless steel hinges and hardware. Our 600D Premium Double Rip-Stop Nylon body will handle the harshest conditions you can put yourself in.

## NOMADIC 3 EXTENDED

### PROTECTION

420 Oxford Rip Stop Waterproof Cover  
Completely Removeable



### MATERIAL

600D Premium Double  
Rip Stop Nylon body

### DURABILITY

Diamond Plate  
Aluminum Base

### DOORS & WINDOWS

110g Environmental Fadeless  
Gaze Breathable

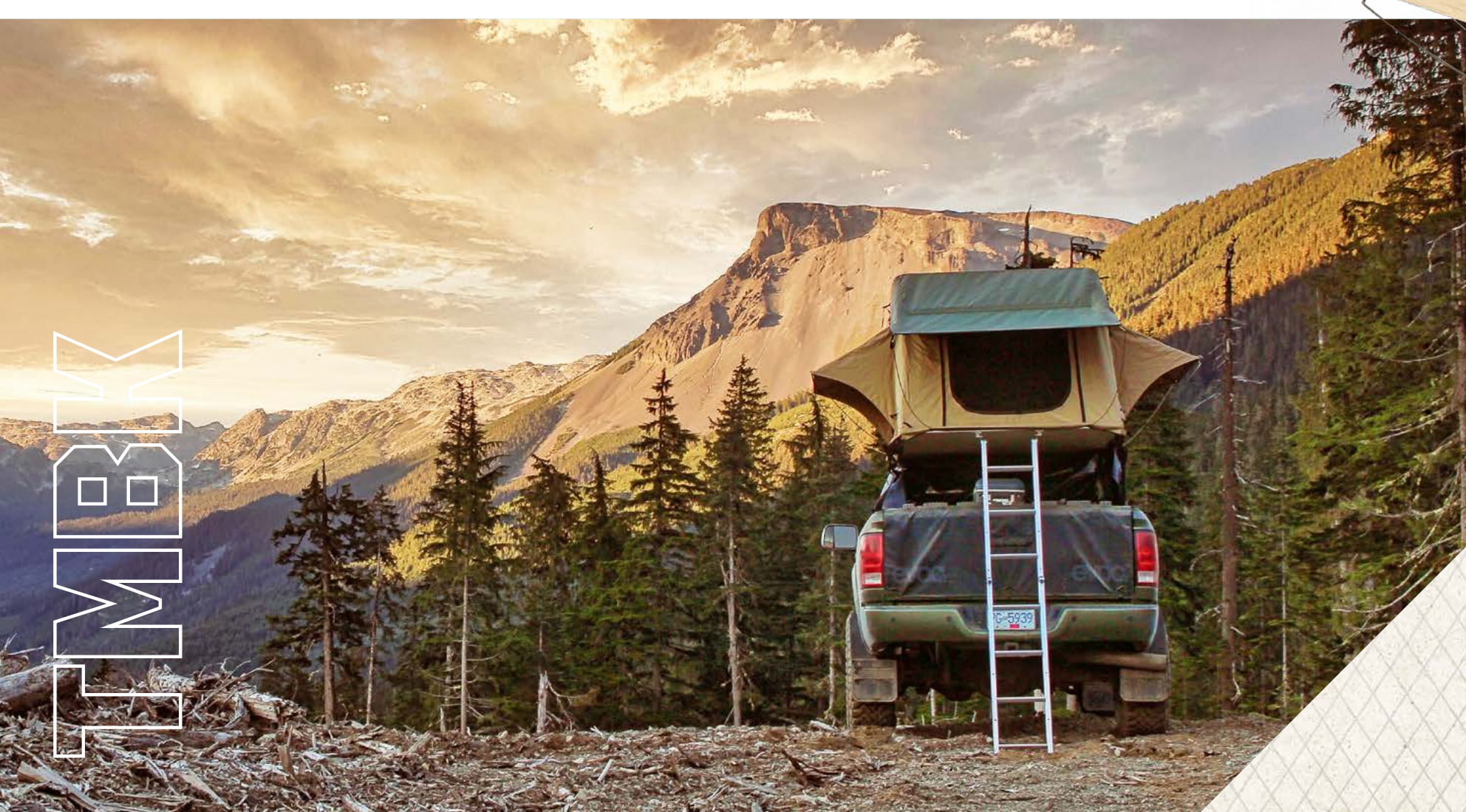
## INTERIOR COMPONENTS

- Anodize Aluminum Light Weight Construction w/ Cover
- 3" High Density Foam Mattress with Washable Cotton Cover
- Large 6 Internal Pouch With Two External Storage Pouches
- Marine Grade w/ Stainless Steel Hinge

## INTERIOR SHOT







TMBK

# ROLLING TMBK 3

If you want a burly, strong, durable, and Light Weight Roof Top Tent, you've come to the right place. Our TMBK 3-Person Tent features double-grid Rip-Stop nylon, built for the long-haul and is 50% stronger than other material. Our base features an insulated, reinforced and welded one-piece frame with stainless-steel heavy-duty hinges that will last a lifetime. This tent has a skylight so you can enjoy the cool evenings or the sunrise. Our TMBK 3 Person Tent is big enough for a small family and only weighs about 100 lbs. If you have an SUV, Cross Over, Jeep, or Truck with a rack, this will install with no modifications and comes with all the tools necessary to install.



**TMBK 3**

**PROTECTION**  
Manufactured from a 420D Polyester Oxford Waterproof Material

**MATERIAL**  
Rip Stop Nylon body

**BASE**  
Sturdy Aluminum Insulated Construction

**DOORS & WINDOWS**  
110g Environmental Fadeless Gaze Breathable

## INTERIOR COMPONENTS

- Configure your tent to suit your environment
- TMBK tent fits up to 3 people
- Our tent features Double-Grid Rip-stop Nylon
- Insulated Tent Base Stainless Steel Hardware
- Will fit anything with a factory or aftermarket roof rack

## INTERIOR SHOT







# OUT IN THE WILD

The new BushVeld Roof top Tent, a 4-Season cantilever design is one of the largest tents on the market today. The stylish one-piece shell is aerodynamic and simple to use. Release the top and flip the bottom out and you have a King-size mattress that will give you plenty of space for the entire family. Every OVS tent features our double 600D rip stop body material with a 420-oxford rip stop cover which is designed to last and will ensure your overlanding experience is never compromised. Gaze under the stars with the skylight or roll up all the windows and let the morning breeze come through, either way you're Overlanding. This simple design can be set up in under a minute which gives you time to focus on your adventure.



## BUSHVELD COMPONENTS

- 3 Piece cantilever design
- Premium 600d rip stop polyester canvas waterproof material
- Premium 420d oxford rip stop waterproof cover
- 120g environmental fadeless gaze breathable
- Ballistic nylon pull strap+ Nitrogen gas charged 35.5" X 1" strut
- Marine grade 304 stainless steel hardware+ 96" Tubular telescoping ladder
- Universal adjustable aluminum mounting channel
- Mil spec weatherproof seal
- 3" Memory comfort foam mattress
- 4 Built in personal pouches
- Skylight opening 39' x 25.5"
- Gray body with green rainfly

## INTERIOR SHOT







MAMBA

# INTO THE THICK OF IT

The New Mamba Roof top Tent, a 4-Season clam shell design manufactured out of aircraft grade aluminum featuring a honeycomb base and top making this unit one of the lightest and strongest tents on the market today. This quick deployment tent allows you to spend more time doing the important things then setting up or tearing down your campsite.



**MATERIAL**  
6061 Aircraft grade aluminum

**PROTECTION**  
Manufactured from a 420D Polyester Oxford Waterproof Material

**MAMBA**

**BASE**  
Black Aluminum Base

## MAMBA COMPONENTS

- Premium 600d rip stop polyester canvas waterproof material
- 120g environmental fadeless gaze breathable windows
- Nitrogen gas charged 35.5" X 1" strut 400n
- Ballistic nylon pull strap
- Aircraft grade aluminum handle
- Marine grade 304 stainless steel hardware
- Extra large loft storage
- 6061 Aircraft grade aluminum with built in rail system + optional rack mounts
- Universal adjustable aluminum channel
- Mil spec weatherproof seal
- 2" Extra firm mattress
- Top and bottom base - 1" aluminum honeycomb insulated
- Two built in personal bags

## INTERIOR SHOT





# SAFARI TENT



## A QUICK POP-UP

Overland Vehicle Systems creates some of the best tents in the industry, and it's with no surprise that it's added to the mix. Our Quick Pop Up Ground Tent is one of the fastest deployable tents on the market! Crafted from waterproof 420 Oxford, it's built for just about any season, and it's large enough to sleep up to 4-5 people.

The POP Up Ground tent is four-sided, including an entire PVC floor that will not allow water to enter, four walls, and a ceiling for maximum protection from the outside. There is a full-size entry door, four-screen windows, and a massive panel allowing access to the outside.

### MATERIAL

Manufactured from a 420D Polyester Oxford Waterproof Material

### MAMBA



### PROTECTION

120g environmental fadeless gaze breathable windows

### SECURITY

Heavy-duty zippers

## SAFARI COMPONENTS

- Manufactured from high quality waterproof water proof 420 Oxford
- Waterproof Polyurethane coating for maximum water resistance, Breathable, UV & Mold Resistant
- Heavy-duty zippers
- Fully enclosed w/a ceiling & heavy duty floor
- Telescoping Poles
- Completely waterproof
- Can sleep up to 4- 5 people comfortably
- Includes: Storage Bag

### INTERIOR SHOT







AWNINGS

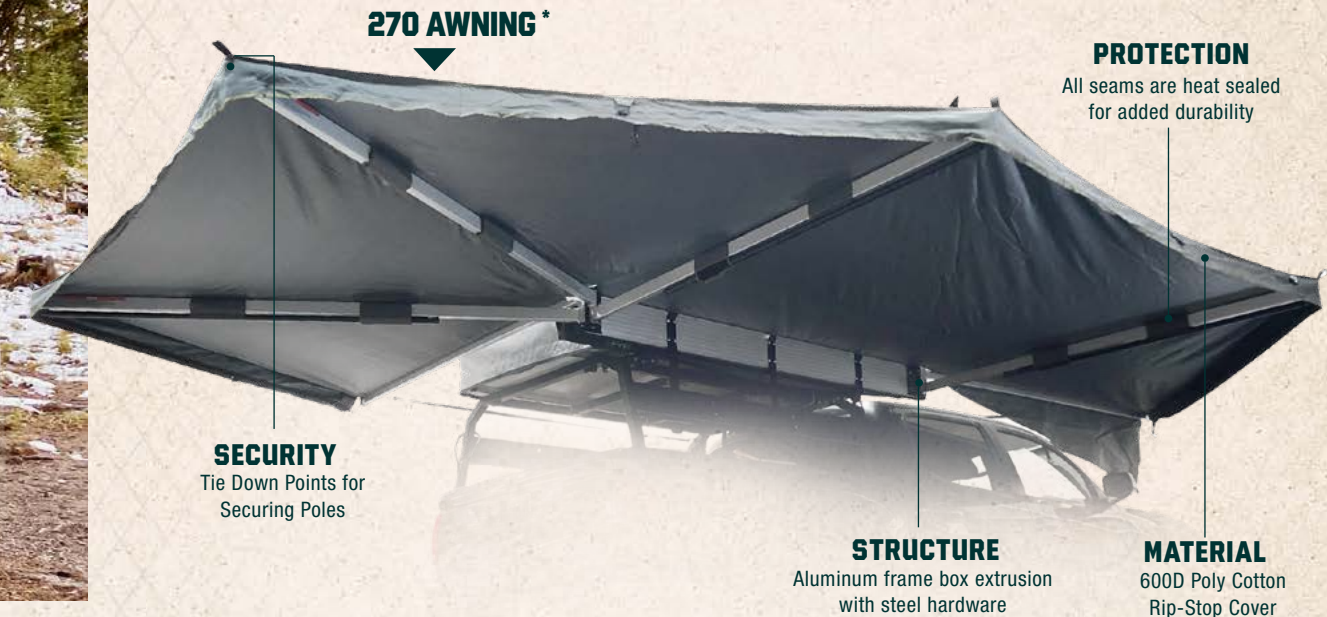


270 AWNING



# 270° OF PROTECTION

Overland Vehicle Systems Nomadic Awning series is built with the same high-quality materials as their Nomadic rooftop tents. OVS' Awnings provides shade on hot sunny days and easily attach to most standard roof racks. When you're looking for a quick deploying one-person operation awning that gives you the maximum square footage of shelter, you came to the right place.



## AWNING COMPONENTS

- 129 Square Feet of Freestanding Covered Shelter
- Boxed Aluminum Rafters
- Tie Down Points for Securing Poles and Water Run Off
- Ballistic Nylon Tie Downs with S Connects and Buckle
- Shock Cord With Retention
- Zippers To Secure Enclosed Shelter
- Heavy Duty Oversized Stakes



Pivoting aluminum support poles feature twist and lock technology adjustable up to 8.5 feet



Large heavy duty velcro straps for storage while not in use



1000G PVC Travel Cover with #10 Zipper

### ◀ 270 WALLS

Nomadic 270 Passenger Awning enclosure to protect you from Wind, Rain, Sun and Extreme Weather conditions. Completely zips in and extends your Nomadic 270 Awning to the ultimate shelter. Set up is quick and comes with travel bag for easy stowing.

\*AVAILABLE IN DRIVER AND PASSENGER



270LT AWNING



# 270LT LIGHT BUT PROTECTIVE

Overland Vehicle Systems Nomadic Awning series is built with the same high-quality materials as their Nomadic rooftop tents. OVS' Awnings provides shade on hot sunny days and easily attach to most standard roof racks. When you're looking for a quick deploying one-person operation awning that gives you the maximum square footage of shelter, you came to the right place.



## AWNING COMPONENTS

- 80 Square Feet of Freestanding Covered Shelter
- 600D Poly Cotton Rip-Stop Cover
- Boxed Aluminum Rafters
- Tie Down Points for Securing Poles and Water Run Off
- Ballistic Nylon Tie Downs with S Connects and Buckle
- Shock Cord With Retention
- Zippers To Secure Enclosed Shelter
- Heavy Duty Oversized Stakes
- Walls available for this application



Pivoting aluminum support poles feature twist and lock technology adjustable up to 8.5 feet



Large heavy duty velcro straps for storage while not in use



1000G PVC Travel Cover with #10 Zipper

\* AVAILABLE IN DRIVER AND PASSENGER





# 180° OF SHADE

Overland Vehicle Systems Nomadic Awning series is built with the same high-quality materials as their Nomadic rooftop tents. OVS' Awnings provides shade on hot sunny days and easily attach to most standard roof racks. When you're looking for a quick deploying one-person operation awning that gives you the maximum square footage of shelter, you came to the right place.

## 180 AWNING\*



**MATERIAL**  
600D Poly Cotton  
Rip-Stop Cover

**PROTECTION**  
All seams are heat sealed  
for added durability

**STRUCTURE**  
Aluminum frame box extrusion  
with steel hardware

**SECURITY**  
Tie Down Points for  
Securing Poles



## AWNING COMPONENTS

- 88 Square Feet of Freestanding Covered Shelter
- 600D Poly Cotton Rip-Stop Cover
- Boxed Aluminum Rafters
- Tie Down Points for Securing Poles and Water Run Off
- Ballistic Nylon Tie Downs with S Connects and Buckle
- Shock Cord With Retention
- Zippers To Secure Enclosed Shelter
- Heavy Duty Oversized Stakes
- Walls available for this application



Pivoting aluminum support poles feature twist and lock technology adjustable up to 8.5 feet



Large heavy duty velcro straps for storage while not in use



1000G PVC Travel Cover with #10 Zipper

\* AVAILABLE IN DRIVER AND PASSENGER

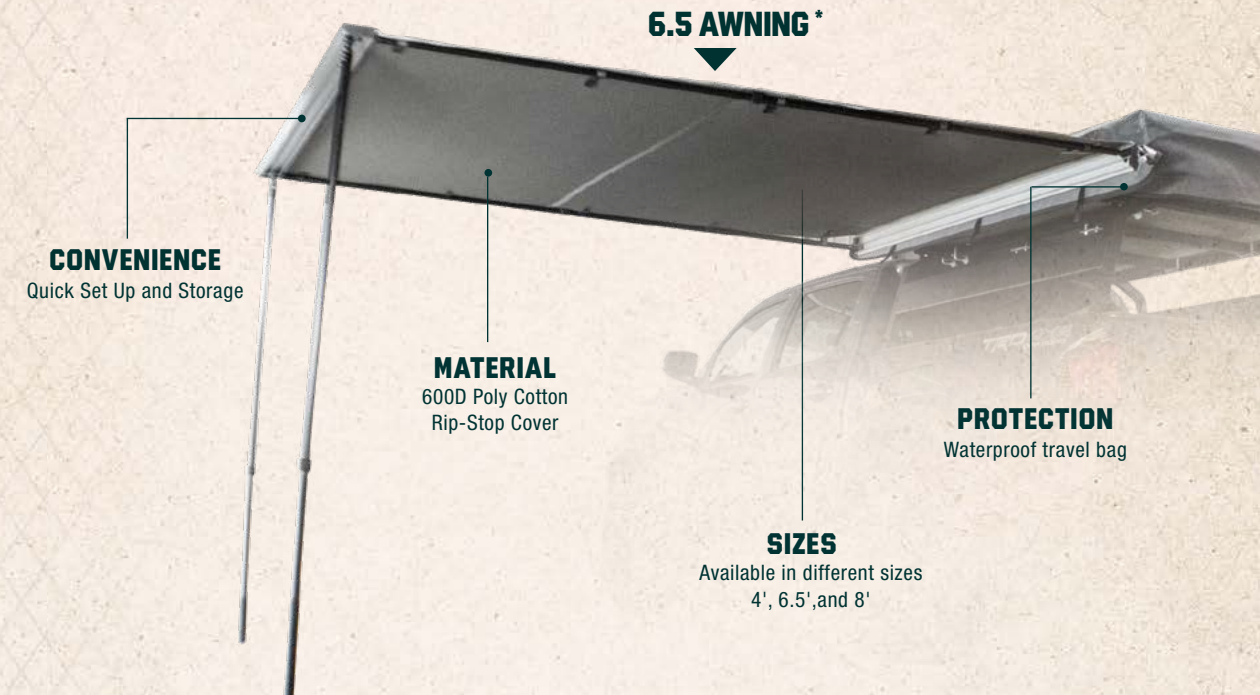


AWNING



# QUICK AND EASY

Overland Vehicle Systems Nomadic Awning series is built with the same high-quality materials as their Nomadic rooftop tents. OVS' Awnings provides shade on hot sunny days and easily attach to most standard roof racks. When you're looking for a quick deploying one-person operation awning that gives you the maximum square footage of shelter, you came to the right place.



4+5+6+8+FT



## AWNING COMPONENTS

- 600D Poly Cotton Rip-Stop Cover
- Ballistic Nylon Tie Downs with S Connects and Buckle
- Boxed Aluminum Rafters
- Shock Cord With Retention
- Tie Down Points for Securing Poles and Water Run Off
- Zippers To Secure Enclosed Shelter
- Heavy Duty Oversized Stakes



Pivoting aluminum support poles feature twist and lock technology adjustable up to 8.5 feet



Large heavy duty velcro straps for storage while not in use



1000G PVC Travel Cover with #10 Zipper





# OUT AND ABOUT

Nomadic Car Side Shower Room is ideal for overland travel, camping, or suited to campers and trailers, providing shower, toilet or change room privacy while on the trail. Shower Room is light weight, convenient, and easy to set up. It easily mounts to your vehicle just like a traditional awning.

## CAR SIDE SHOWER ▼

**PROTECTION**  
1000G PVC Travel Cover

**STRUCTURE**  
Aluminum frame box extrusion with steel hardware

**CONVENIENCE**  
Quick Set Up and Storage

**MATERIAL**  
420D Oxford Rip Stop fabric



## SHOWER COMPONENTS

- Aluminum folding arms enclosed in rugged 1000D waterproof PVC integrated storage bag
- Mounts to roof rack with supplied L brackets and mounting stainless steel hardware
- Curtain hems weighted with structural poles to keep shape
- Adjustable straps to accommodate various vehicle heights.
- Front curtain wall features a heavy duty dual sided zip which allows easy access in and out of the Nomadic Car Side Shower



Manufactured from a high performance 420D Oxford Rip Stop fabric



Velcro strap to secure a shower head and two internal pouches.



Mounts to roof rack with supplied L brackets and mounting stainless steel hardware



# VEHICLE BUILD

**VB**

- KINETIC BRUTE ROPE
- TMBK TENT
- NOMADIC 270° AWNING
- UP DOWN AIR GEN 2 KIT
- UFO SOLAR CAMP LIGHT
- EXTRA LARGE TRASH BAG TIRE MOUNT







# BED RACKS

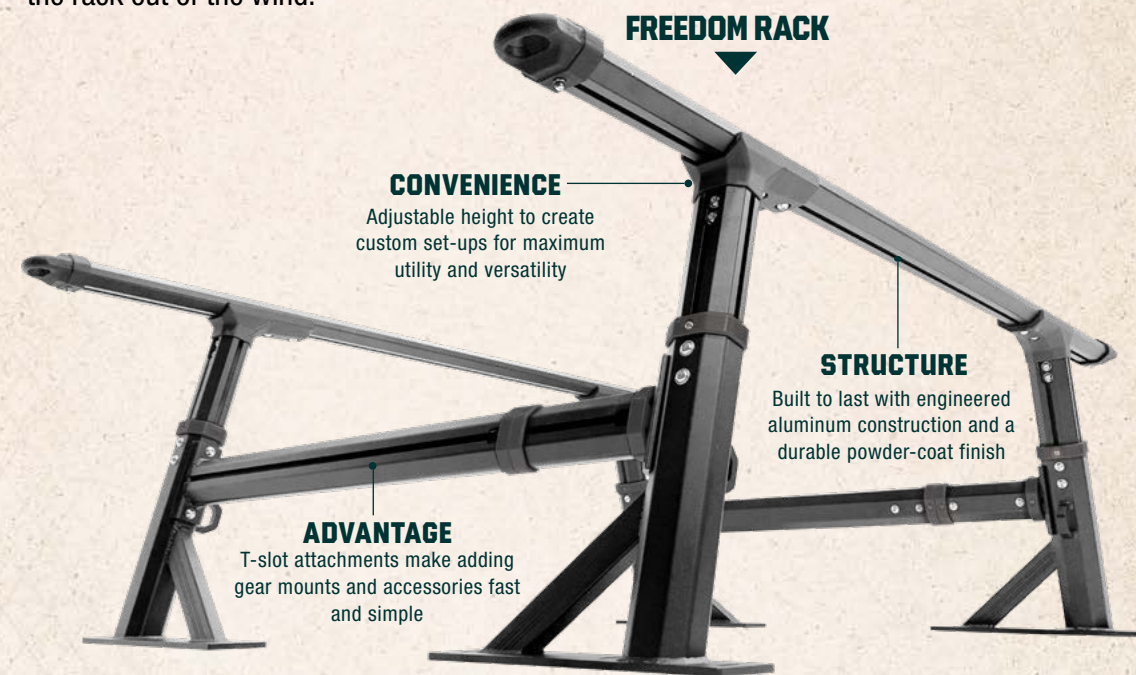


RACK



# OVERALL QUALITY

For adventures and hardworking weekdays, our Freedom adjustable truck rack offers the highest quality performance of any rack on the market. Our Freedom Rack comes fully equipped with 4 heavy-duty towers, 2 long bed sidebars, and 2 heavy-duty crossbars. The ready to assemble kit comes with all necessary hardware and tools to get you out on the road in just one hour. The beauty of the Freedom Rack is the crossbar height can be adjusted to suit your needs: way up, for long loads to go over the cab—or down low, to get the rack out of the wind.



**FREEDOM RACK**

**CONVENIENCE**

Adjustable height to create custom set-ups for maximum utility and versatility

**STRUCTURE**

Built to last with engineered aluminum construction and a durable powder-coat finish

**ADVANTAGE**

T-slot attachments make adding gear mounts and accessories fast and simple

FREEDOM



## RACK COMPONENTS

- Comes with 4-Heavy duty towers
- Comes fully equipped with all crossbars and sidebars
- Designed and tested for all common truck beds using our clamp design
- Able to carry rooftop tents and accessories
- Integrated tie-down points help easily secure any load
- T-slot attachments make adding gear mounts and accessories fast and simple
- Dynamic weight capacity of the Freedom rack is 450 lbs.
- Static weight capacity goes up to 1350 lbs.



Multi-layered clamping system that includes aluminum tower mount and rubber mounting pad.



Heavy duty polymer end caps, safely secured with hardware



Can easily mount rooftop tent accessory



KYRAK



# A NEW DISCOVERY

The OVS Discovery Rack is a multipurpose cab height rack that meets the needs of every Overlander. Custom fit for each application and designed to be a direct bolt on featuring square tube that can be set up to accommodate whatever trail needs you have. All of the racks are prewired and including full line of lighting all managed by a waterproof six way switch. This open rack design has plenty of capacity to support just about everything you want to put on it. OVS offers the best warranty with a limited lifetime structural warranty and five year finish warranty.

### CONVENIENCE

Side plates to mount gas cans, water cans, Jacks, and recovery ramps

### DISCOVERY RACK



### STRUCTURE

Built to last with engineered aluminum construction and a durable powder-coat finish

### EASY INSTALL

No Drill Installation

OVERLAND



## RACK COMPONENTS

- To 1.75" Square Tube Design on midsize applications and 2.0" square tube design on all full-size applications
- No Drill Installation- Bolts directly up to existing holes
- Full Length rails with integrated tie downs to ensure you can secure all types of loads
- Removable shelf to store quick access items like propane bottle, CO2 tanks, Compressors, ETC.
- Side plates to mount gas cans, water cans, Jacks, and recovery ramps



T-slot Cross Bars  
Design for easy to mount accessory integration



Easy to use bolt-on system



Removable Shelf with anchor tie down points



DOWN RANGE RACK

# DOWN RANGE



## NEW TO THE GAME

Our new Down Range Roof Rack is a low-profile open system perfect for complimenting the Modern Overlander. Available in multiple sizes, this new rack system will expand your cargo capacity significantly. Manufactured from quality materials featuring aircraft grade aluminum, stainless steel hardware and reinforced high impact plastic corners, used with our high-quality accessories, this system will last you a lifetime.

### DOWN RANGE RACK



**ASSEMBLY**  
Some assembly  
Required

### DURABILITY

Two stage black powder  
coat with a five-year finish  
warranty

### MATERIAL

Manufactured out of  
heavy-duty aircraft grade  
6061 aluminum

### DESIGN

Nylon reinforced high impact  
plastic corners

## RACK COMPONENTS

- Universal mounting brackets included – no drill bolt on design
- Oversized 9/16” slots - running front to back and side to side open tie down system
- Easy to mount roof top tents, awnings, bike racks, surf racks or canoe holders
- Multiple sizes available to ensure you get the perfect fit
- Multiple accessories available – tie downs, shovel mounts, recovery ramps, fuel cans and other cargo and other cargo management items



High Impact  
Plastic Corners



Two Stage  
Black Powder Coat



Marine grade 304 stainless  
steel fasteners



# CARGO MANAGEMENT









# REFRIGERATOR TRAY



## SLIDING AND TILTING

Overland Vehicle Systems new Refrigerator Tray With Slide and Tilt now operates as a straight pull out slide, and it has the option to tilt. This means you have the advantage of a fridge slide that runs on stainless steel runners. This product offers maximum strength with the ability to carry greater loads, with greater resistance to dust and the harsh off-road conditions.

### REFRIGERATOR TRAY WITH SLIDE

**FUNCTIONALITY**  
Powered by Gas Shocks

**FINISH**  
Durable Weather Resistant  
Black Powder Coating

**MATERIALS**  
Stainless steel runners with sealed  
stainless-steel bearings

**SECURITY**  
Easy to use locking  
mechanisms

## REFRIGERATOR TRAY COMPONENTS

- 4 Tie downs points that will allow you to secure your load
- Two Stage dual powder coat with a 5 Year finish warranty
- Stainless steel runners with sealed stainless-steel bearings
- Easy to use Locking mechanisms
- Marine grade stainless steel hardware

## DROPPIN' IT LOW

Drops down to a 40 degree angle







# MORE THAN JUST A BAG

Our Canyon line of bags comes in various options and is an eco-friendly alternative to ballistic Nylon. Each bag has been handcrafted out of premium cotton infused with Paraffin, known as Wax Canvas, a waterproof breathable material. Handcrafted to exacting specifications featuring reinforced stitching, heavy-duty zippers, and oversized buckles, our Canyon Bag lineup ranges from tool bags, first airbags, general-purpose to a portable trail/trash bag, and everything in between. What is great about Waxed Canvas is as age scuffs & wear marks develop characteristics known as patina which is why waxed canvas is timeless and lasts you a lifetime with very little maintenance.

## WAXED CANVAS BAG FAMILY



**MATERIAL**  
Waxed Canvas Duck  
#16 Cotton

**CONSTRUCTION**  
Double Reinforced Stitching

**DESIGN**  
Spacious pockets designed for convenience

**SECURITY**  
Heavy Duty Ballistic Nylon Straps

## WAXED BAGS FEATURES

- Various Sizes and Designs
- Eco-Friendly Breathable Material
- Exterior Storage Mesh Pouches
- Interior Synch To Secure Debris
- Padded carrying handles on select designs
- Infused with Paraffin



CANYON





# DRY STORAGE BOXES



# ORGANIZED IN STYLE

Overland Vehicle Systems is the leader in Overland Equipment and Camping Gear. Our Dry Box Storage (D.B.S) is the perfect addition to your adventure. Our Dry Boxes are Heavy-Duty Storage Dry Boxes that come in dark grey. The Overland Vehicle Systems Dry Storage Box is ideal for storing your tools, dry goods, recovery gear, clothes, or anything you need to keep dry during your Outdoors Adventures.



## DRY BOXES COMPONENTS

- Available in 4 Capacities
- Durable Polyethylene,
- Durable outer LLLDPE Material
- Heavy-Duty Handles
- Well designed latches for all sizes
- Dustproof/Waterproof Gasket Seal
- Bottle Opener for the right occasion
- Wheels for convenient transportation
- Easy to use drain



# CAMPING GEAR





# KOMODO CAMP KITCHEN



## LET THERE BE FIRE!

Overland Vehicle Systems is the leader in Overland Equipment and Camping Gear. Our Komodo Camp Kitchen is a lightweight and portable Camp Kitchen. Constructed from aircraft grade aluminum and stainless steel, this premium camp kitchen is designed to take up little space while stored. The Komodo Camp Kitchen expands into a large cooking station. The dual grills allow for efficient cooking and can be slid underneath the skillet for increased cooking performance. In the event propane is not available, the Rocket Tower will allow you to continue cooking with wood or briquettes. The Overland Vehicle Systems Komodo Camp Kitchen is ideal for Trucks, Cars, SUVs, Trailers, Tailgating, and other solutions.

### KOMODO CAMP KITCHEN

#### CONSTRUCTION

High quality cast iron griddle

#### MATERIAL

Constructed from Aluminum and Stainless Steel

#### CONVENIENCE

Easy to clean and stow away

#### DESIGN

Collapses down to a easy to store size

### KITCHEN COMPONENTS

- Dual Grills/Burners
- Large Cooking Skillet
- Rocket Tower (Wood or Briquettes)
- 2 Folding Shelves
- Expandable Legs
- Storage for Cooking Utensils
- Easy to use handles
- 4 Pull Latches
- Made from Durable Aluminum and Stainless Steel
- Compatible with large and small propane tanks

### EASY TO USE

Easy to use and convenient handles and latches





# VEHICLE BUILD

VB

- TMBK TENT
- NOMADIC 270LT AWNING
- UP DOWN AIR GEN 2 KIT

- RECOVERY RAMPS
- ALL PURPOSE TOOL BAG







RECOVERY





# STRENGTH & DURABILITY

OVS offers a complete line of professional grade recovery gear for every situation. Soft shackles and recovery rings are the latest gear needed for the modern off reader. Our straps range from a tree saver to a heavy duty 30,000 lbs. and can be used with one of our traditional shackles or attach to any vehicle tow point. When the load needs a little more capacity considering one of our snatch blocks to make any recovery situation easier

## RECOVERY RINGS



**TRAIL READY**  
Powder coated to protect against the elements

**RELIABILITY**  
Manufactured out of T6 6061 Aircraft Grade Aluminum

**STRENGTH**  
50% stronger than traditional Recovery Rings

## KINETIC BRUTE ROPE



**MATERIALS**  
Created with secure double braided nylon

**DURABILITY**  
Breaking Strength of 35,000lbs

**FUNCTIONALITY**  
Kinetic energy allows for a smooth recovery

## RECOVERY GEAR FEATURES

- Top Tier Design
- Quick and easy to use and requires no tools
- Soft Recovery Shackles works with D-Rings
- Select parts come with storage bag with mesh
- Limited Lifetime Warranty on recovery gear
- Manufactured out of the most durable materials in the industry
- Recovery Shackles are coated with a Gloss Powder Coat

## TRAIL READY

All recovery gear can be used with each other to give yourself more leverage on the trail



OVERLAND VEHICLE SYSTEMS



# CAMP LIGHTING





CAMP LIGHT



# BY THE CAMPLIGHT

The OVS UFO is the ultimate camp light that features entertainment and portability. This solar power design features a lithium-ion battery that keeps this entertainment center operating for hours into the night, plus works as the camp charging station. You can extend the entertainment with the portable speaker and light pods, and with its heavy-duty construction, the UFO solar Lamp will last you a lifetime.

## UFO SOLAR CAMP LIGHT

**CONVENIENCE**  
Easy to remove LED light source, and Various LED light patterns

**FUNCTIONALITY**  
The head unit mounts on three springs that will handle the most extreme windstorms.

**RECHARGE**  
UFO Pods are able to recharge all your



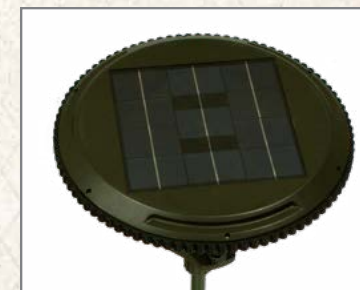
**MUSIC**  
Detachable bluetooth speaker

## LIGHTING COMPONENTS

- Has the option of three power sources: Solar charge, USB charge or 3D standard batteries
- LED Light pods can stick to any surface with a magnet backing and can be hung from any surface.
- The pods can be charged through the UFO or charged independently, also can charge your devices when needed
- The Foundation of the UFO is manufactured with Aircraft Heavy-Duty Aluminum.
- A hard shell carrying case makes transportation easy easy!
- Three Different Light patterns are offered in our LED light pods



3- Legged Tripod with hook for sandbags



9.75" Solar panel on head unit



Three portable light pods that can charge your devices

UFO SOLAR





# VEHICLE LIGHTING





# EKO VEHICLE LIGHTING



## TO LIGHT THE WAY

Overland Vehicle Systems EKO LED Light featuring RGB Technology is like no other light on the market today. This performance focused light features Osram LED's which are the leaders in LED technology. The Osram LED's, PCB board and Chip used in the EKO light is one of the most sophisticated in the automotive lighting industry today.

### WIRING HARNESS

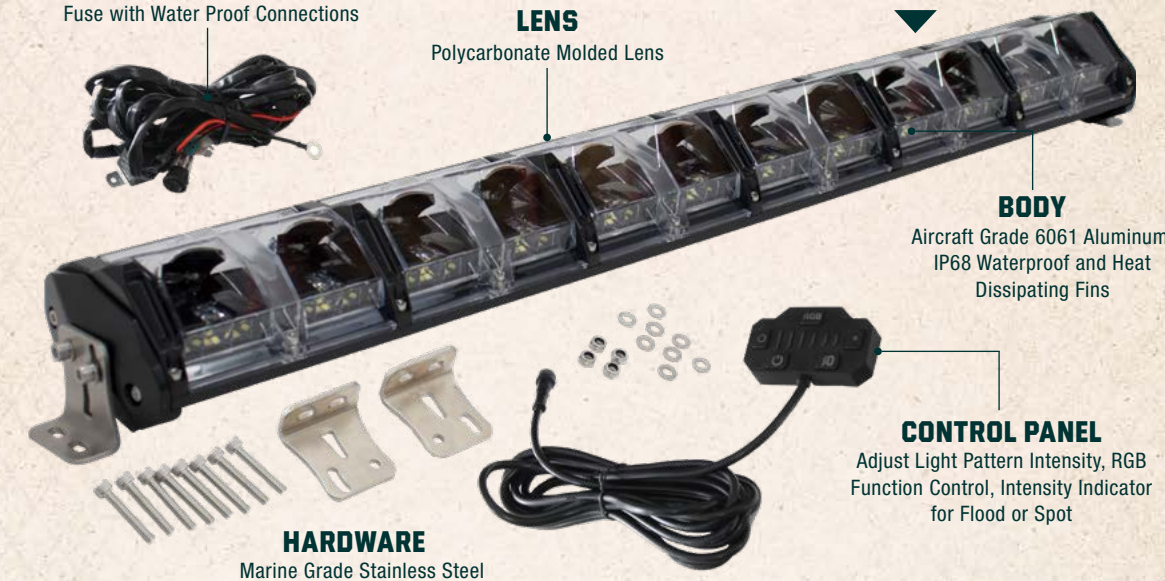
Heat Shrunk with 40 AMP Relay and Inline Fuse with Water Proof Connections



### LENS

Polycarbonate Molded Lens

### EKO LIGHT BAR 40"



### BODY

Aircraft Grade 6061 Aluminum, IP68 Waterproof and Heat Dissipating Fins

### CONTROL PANEL

Adjust Light Pattern Intensity, RGB Function Control, Intensity Indicator for Flood or Spot

### HARDWARE

Marine Grade Stainless Steel

## EKO FEATURES

- High Beam
- Low Beam
- Flood Beam
- Spot Beam
- Scene Beam
- RGB Back Light
- Six Level Brightness Control
- Aircraft Grade 6061 Aluminum
- Body with Heat Dissipating Fins
- Lexan Polycarbonate molded Lens
- Marine Grade 304 Stainless Bracket and Hardware

## LIGHT FUNCTIONS

Daytime Running Light with Spot and Flood Option, High to Low Beam Button, 6-Way Adjustable beam from flood to spot, RGB Running Light with 8 Color Options. Infinite lighting Possibilities. RGB Colors in Sequence: Green, Blue, Yellow, Purple, Teal, Opal & Red.

**COMES IN 5 SIZES**



Marine Grade Stainless Steel M6 Hardware Kit Including Mounting Adjustable



Soft Touch Control Panel



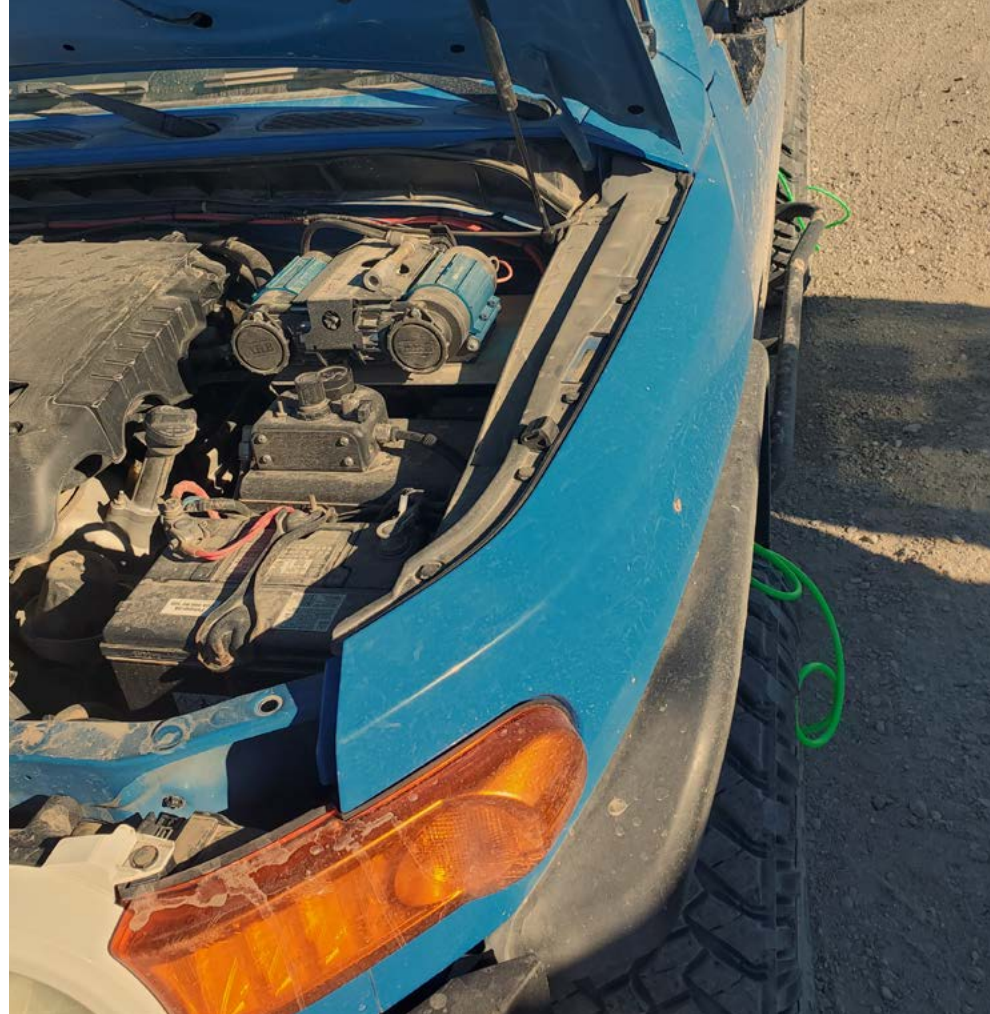
Triple Chrome Plated Reflectors



# AIR MAINTENANCE







# AIR IT UP, AIR IT DOWN

Introducing our Gen2 Air Delivery System (ADS) Jeep Wrangler & Unlimited JK & JKU rear engine mount to work with an Spod that allows you to inflate or deflate all four tires simultaneously which makes managing tire air pressure quick and easy. Our system can manage air through an on-board permanent air source with dedicated air inlet or through portable air pump that can attach through an external Schrader valve.



## UDA COMPONENTS

- Air It Up® 4 Tire Inflation System can deflate, and automatically inflate or equalize 4 tires at the same time.
- Includes ADS Controller Box, 90 psi Pressure Regulator, 150 psi Blow-off Valve.
- ADS Controller features 2 inlet valves with permanent or portable air source.
- Includes 8 Quick Connect Chucks with the easy to use Betty Bar™ feature and 4 Green Tire Connect Whips with a Storage Bag
- Heavy Duty Construction with DOT approved hoses and fittings.
- Designed to work with the EGO1 2 Air Compressor, ARB and Viar Compressors
- Complete line of Air Compressor Bracket Kits Available for Under Engine, Under Seat, & Rear Cargo Area Mounting Solutions.
- 5-Year Limited Month Warranty



ADS Controller features 2 inlet valves with permanent or portable air source



Includes Pre-cut Hoses, Push To Connect Fittings, and everything that is needed for easy installation.



Multiple Mounting brackets available for various make and models





# MAXIMUM EFFORT

The EGOI high-performance air compressor puts out 5.6 CFM, one of the most powerful portable systems today. The output this system puts out can handle the smallest jobs to the biggest with no problem. The sheer volume of air that this system puts out makes tire inflation quick and easy. Designed for the off-roader in mind, this system can work on bikes, boats, trailers, and RV tires as well.



**TRANSPORT**  
It fits nicely in our ballistic nylon bag with caring handles

**CONTROL**  
Quick Release Fitting

**POWER**  
This workhorse features a 1/3 horsepower motor

**EGOI AIR COMPRESSOR**

## COMPRESSOR COMPONENTS

- Maximum Air Flow 5.6 CFM
- Maximum Air Pressure 150 PSI
- Maximum Voltage 13.8
- Maximum AMP draw 45
- This workhorse features a 1/3 horse- power motor makes this one of the largest motors in the portable class
- Built-in Thermal cut off switch make sure your system doesn't overheat and protects your investment
- It fits nicely in our ballistic nylon bag with caring handles
- Capable of handle the smallest to the largest jobs



3-piece inflation kit with every compressor



24' coiled hose with pressure gauge



8' 120V heavy-duty power cables with alligator clips for easy connection

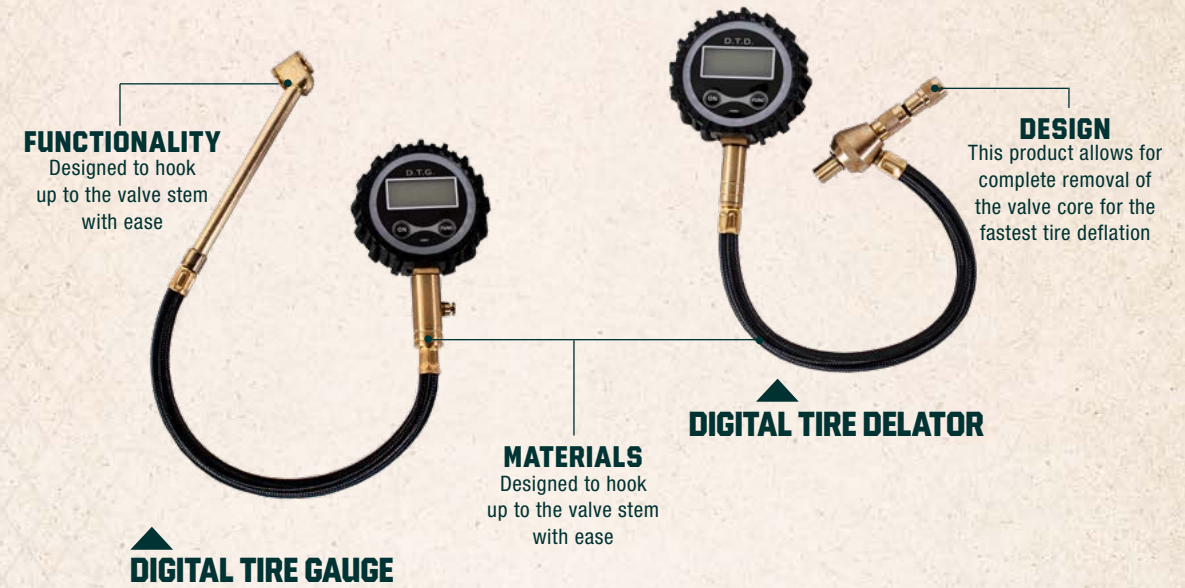


# AIR ACCESSORIES



## AIR ACCESSORIES

Mechanic recommended, performance tested, & certified precise pressure readings up to 200 psi with display resolution to 0.10 Psi increments. Built from super strong brass & steel parts shielded by our rugged shock-resistant gear-style protective guard. Flexible 10" no-leak rubber air hose with super handy 360-degree interchangeable advanced angled chuck for easy access to the tire valve. All readings lock-on to the display until the "on" button on the gauge is pressed to reset to 0 psi. Integrated air bleeder valve to reduce pressure in overinflated tire. Large 2" lcd display screen with battery life indicator.

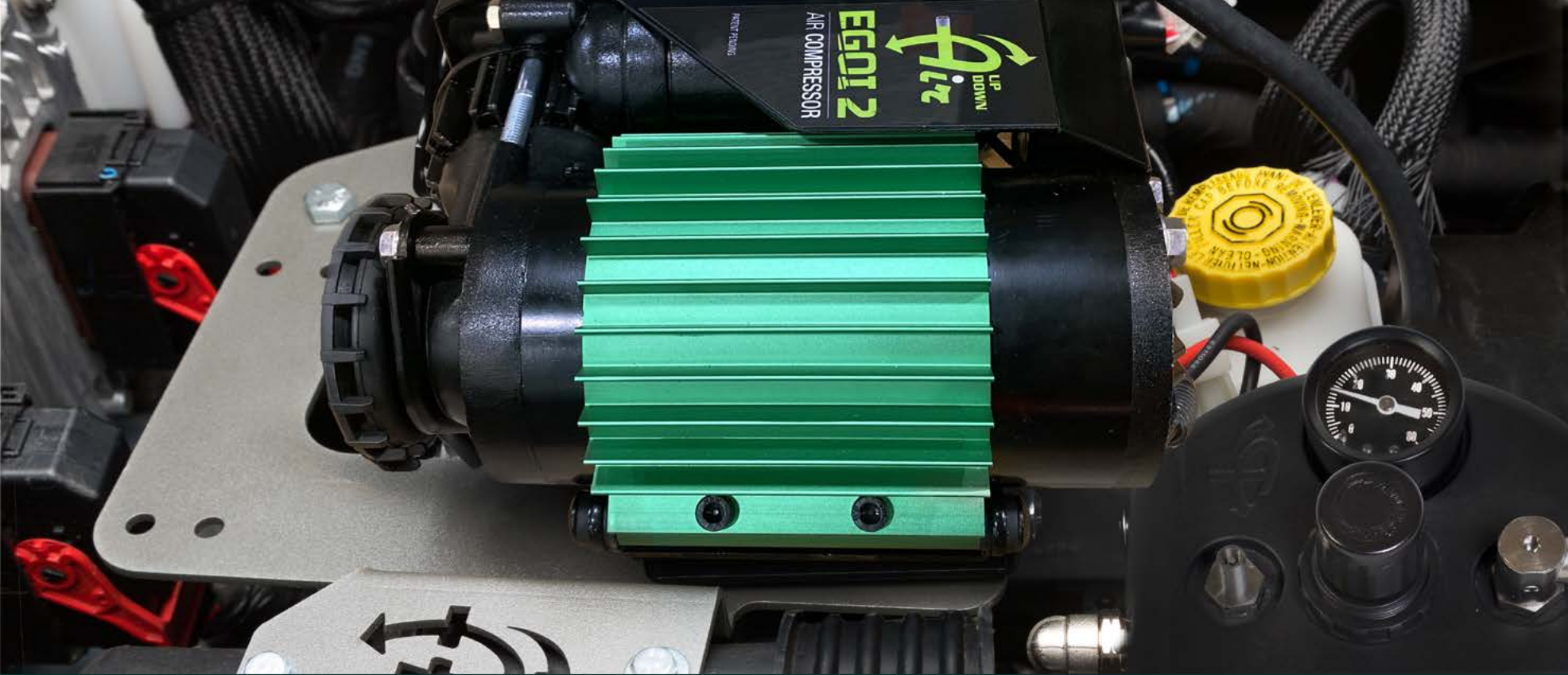


## AIR ACCESSORY COMPONENTS

- Heavy Duty Rubber Protective cover
- Illuminated display
- Reinforced Air-line
- Anti-rust brass and stainless Steel
- Valve stem Repair Kit included with any DTG
- Heavy Duty storage Bag comes with every kit
- Designed for easy connection to valve stem
- 3" Circle Dial
- 1.25" Width fo Dial







# EGOI 2 AIR COMPRESSOR

The UDA EGOI 2 Air Compressor is full of power and designed to withstand the most extreme elements. You don't have to be an air aficionado to understand that this system is loaded with performance and will handle anything you throw at it. The best part is that it directly integrates into our world class (ADS) air delivery system. We focus on quality and only use the highest quality materials, like our aircraft grade 6061 aluminum bodies as it provides reduction in weight and dissipates heat without sacrificing strength.

## EGOI 2 AIR COMPRESSORS



## COMPRESSOR FEATURES

- Twin permanent magnetic motors with thermal cut off switch
- 150 Psi pressure safety cut off switch – safety and security
- Aluminum fins and integrated cooling fan reduces heat and optimizes performance
- Adjustable air outlet to accommodate all requirements
- Optimum for the up down air systems with direct integration
- When used with an air tank it will run air tools & impact guns
- Ip 55 rated - water projected nozzle against the enclosure from any
- Direction shall have no harmful effect
- Complete protection against contact with live or moving parts inside the enclosure

## COMPONENTS



Learn more about roof racks on our website.