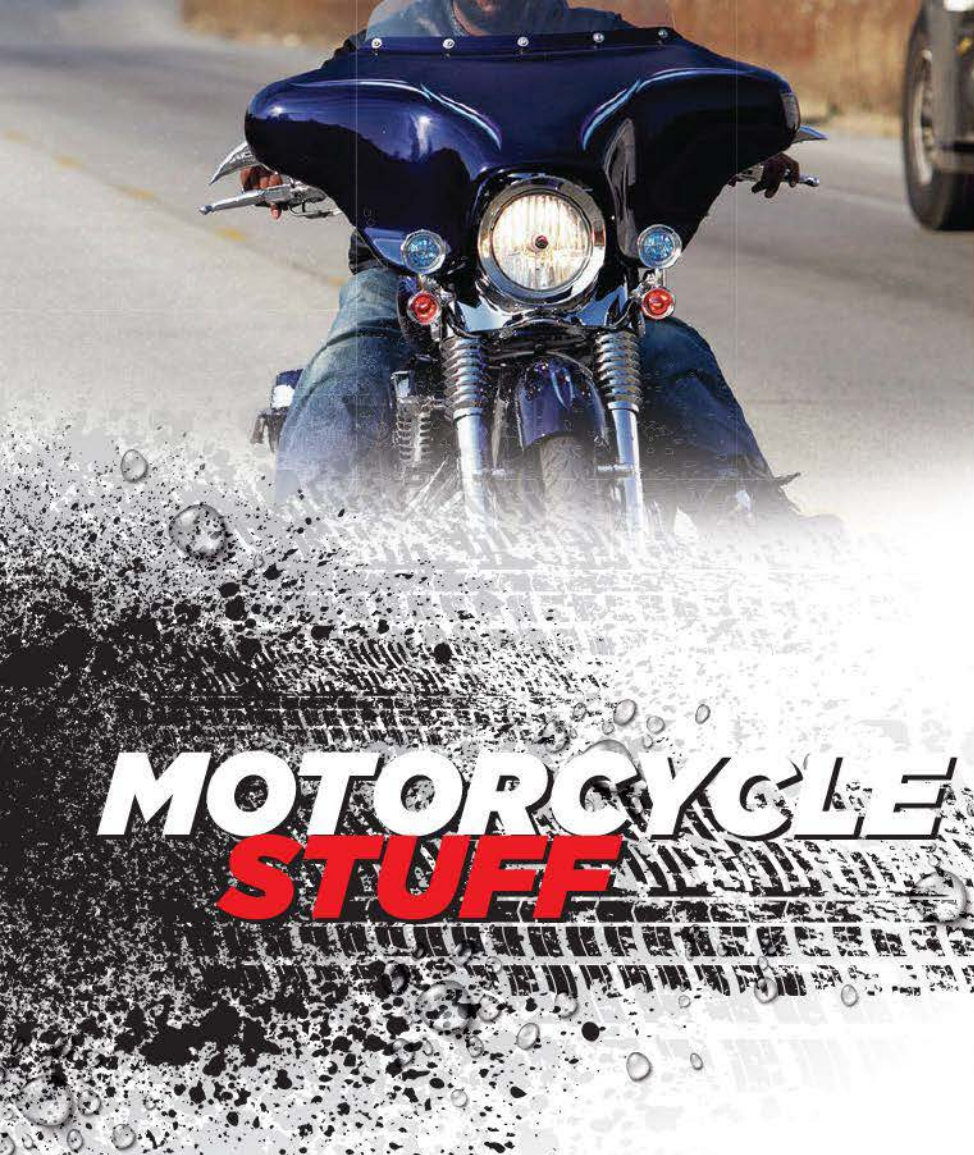




MOTORCYCLE + ATV/UTV + MARINE ACCESSORIES



A PERFECT FIT EVERY TIME! **KITS**

Metra's TurboKits® are manufactured of OEM-quality ABS plastic and designed with exacting tolerances, so each matches the factory dash contours perfectly with no gaps between the dash and the kit. From basic to custom installs, perfection starts here!

INSTALLERWORKS™

Metra's InstallerWorks™ includes all the items that make installations easier while providing the extra polish that sets your work apart from the norm. From speaker adaptor plates to universal ABS blank panels, InstallerWorks™ provides top quality for the best installation every time.

ANTENNAWORKS®

Because you're an installer, you know there's much more to an antenna than the mast. Metra's AntennaWorks® aftermarket antennas are designed and engineered as a complete system that functions seamlessly in every application and every weather condition.

ACCESSORIES

Metra has a line of premium motorcycle accessories that include everything you need to upgrade your sound, so you can rock while you roll.

MOTORCYCLE RADIO KITS



One piece molded design for solid installation

Rubber gasket to fight vibration and moisture

99-9600

TOURING MODELS

FITS HARLEY-DAVIDSON®

▶ **1996-2013**

- + One piece design molded in ASA plastic offers durable support
- + Rubber trim gasket to fight moisture and vibration
- + The new harness is included and is pre-wired for the AXXESS ASWG-1 to retain handlebar controls
- + Also check out Metra's new speaker adaptors for these same models

MOTORCYCLE RADIO KITS



99-9613

TOURING MODELS

FITS HARLEY-DAVIDSON®

► 1996-2013

- + Radio dash kit for replacing the factory radio
- + Electronic antenna that can be installed in the fairing so the factory rear mounted antenna mast can be removed
- + Handle bar audio control retention interface. Keeps the factory installed audio handlebar controls active when installing an aftermarket radio
- + Includes electronic magnetic antenna
- + Also check out Metra's new speaker adaptors for these same models



99-9700

STREET GLIDE | ELECTRA GLIDE | ULTRA LIMITED MODELS

FITS HARLEY-DAVIDSON®

► 2014-UP* | ROAD GLIDE 2015-UP*

- + Includes data interface accessory power and provides data for factory security system
- + Includes LCD screen that retains oil pressure and EITMS info
- + Designed for Single-DIN radio installations

NEW! 70-9800

AFTERMARKET RADIO HARNESS

FITS HARLEY-DAVIDSON®

► 1996-2013

- + Plugs into the factory radio harness and provides all the wires needed to install an aftermarket radio.



99-9800

TOURING MODELS

FITS HARLEY-DAVIDSON®

► 1996-2013

- + Radio kit to be used when replacing the factory radio
- + Comes with water resistant radio face cover
- + The cover is attached to the kit using uniquely designed hinges that moves the cover out and up when radio adjustments need to be made
- + Has built in rubber opening gasket with magnetic latches to provide a water resistant cover for the radio
- + Also check out Metra's new speaker adaptors for these same models



99-9714

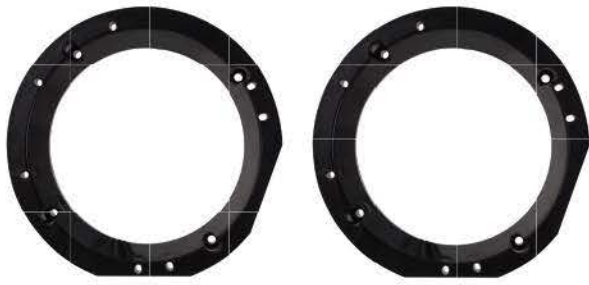
STREET GLIDE | ELECTRA GLIDE | ULTRA LIMITED MODELS

FITS HARLEY-DAVIDSON® WITH SINGLE DIN RADIO

► 2014-UP*

- + Aftermarket radio replacement dash kit
- + Handlebar control interface. This allows the handlebar audio controls to continue working with an aftermarket radio
- + LCD info screen that provides information from the bike about personalization settings
- + Includes an electronic antenna that can be installed in the fairing so the factory rear mounted antenna mast can be removed and a factory antenna cable adaptor

MOTORCYCLE SPEAKER ADAPTERS



82-9600

TOURING MODELS

FITS HARLEY-DAVIDSON®

▶ 1996-2013

- + Custom spacer designed for installation of 6" to 6-1/2" aftermarket speakers
- + One pair of adapters included in each package



82-9601

TOURING MODELS

FITS HARLEY-DAVIDSON®

▶ 1996-2013

- + Custom spacer designed for installation of 6-1/2" to 6-3/4" aftermarket speakers and works with all varieties of speakers including component drivers
- + One pair of adapters included in each package

POWER SPORT + MOTORCYCLE + ATV/UTV ANTENNAS



44-RMMC1

REPLACEMENT MAST

FITS HARLEY-DAVIDSON®

▶ 1996-2013

- + 19" low profile antenna



44-RMMC2

REPLACEMENT MAST

FITS INDIAN | VICTORY

▶ 2012-UP*

- + Strong metal 15" antenna with black rubber cover



44-UA20

ELECTRONIC MAGNETIC ANTENNA

▶ UNIVERSAL

- + High gain "hide-away" amplified antenna for FM bands
- + Active magnetic-type antenna working on the magnetic field associated with a conductor excited by a microwave
- + Voltage pickup is nanovolts, but with the magnetic type circuitry it extracts a signal with superior signal to noise ratio
- + Designed for motorcycles or convertibles where nothing will prohibit FM reception from getting to the antenna
- + 102" coaxial cable and power supply wire
- + Gain: FM - 0/6 db | AM - 2/4 db



44-UA200

AMPLIFIED GLASS MOUNT ANTENNA

▶ UNIVERSAL

- + Deluxe high performance windshield or glass mount amplified antenna
- + Mount on windshield behind mirror or on fixed side/back windows 14-9/16" (37cm) width
- + Gain FM - 10db/12db, AM - 5db/2db
- + 95" cable

MOTORCYCLE INNER FAIRING



95-HDIF

REPLACEMENT INNER FAIRING FOR DOUBLE DIN RADIO

FITS HARLEY-DAVIDSON® TOURING MODELS WITH BATWING FAIRING

► 1996-2013

- + Designed to allow for the installation of a new style aftermarket Double-DIN large face radio
- + Comes with radio mounting kit
- + Made from durable ABS plastic and comes painted black. Can be custom painted any color by the bike owner
- * Additional parts may be needed to be purchased separately depending on the end user's requirements

NEW! HD-ASWC-1

INTERFACE WITH PLUG-N-PLAY HARNESS

FITS HARLEY-DAVIDSON® HANDLE BARS

► 1998-2013

- + Fits 1998-2013 Harleys that have handlebar radio controls
- + Uses patented auto-detect system to configure itself for which bike it is used in and which radio is connected to it
- + Comes with plug-n-play harness
- + Provides wires for speakers, constant power, switched power and ground

MOTORCYCLE HANDLE BAR CONTROLS



Manufactured under one or more of the following U.S. Patents and pending applications: #8104920, #8214105, #8285446, #8527477

MOTORCYCLE BAG COVERS



BC-HD65PR

LEFT & RIGHT WITH 6.5" SPEAKER MOUNTING AREA

REPLACEMENT COVERS WITH SPEAKER MOUNTS

▶ FITS HARLEY-DAVIDSON® 1993-2013

- + Custom design with stylized flame ridges that wrap around speaker openings for aftermarket 6.5" speakers
- + Made from durable ABS plastic and are painted black. Can be custom painted any color by the bike owner
- + Uses factory bag lid hardware and may require additional parts to be purchased depending on the end users requirements



BC-HD69PR

LEFT & RIGHT WITH 6" X 9" SPEAKER MOUNTING AREA

REPLACEMENT COVERS WITH SPEAKER MOUNTS

▶ FITS HARLEY-DAVIDSON® 1993-2013

- + Replaces factory hard saddlebag covers
- + Speaker grilles included
- + Black matte finish - fully paintable
- + Made from weather resistant material
- + Uses factory hinge and latch hardware

NEW! BC-HD69-14U

LEFT & RIGHT WITH 6" X 9" SPEAKER ADAPTORS

REPLACEMENT COVERS WITH SPEAKER ADAPTORS

▶ FITS HARLEY-DAVIDSON® TOURING BIKES WITH FACTORY SADDLEBAGS 2014-UP*

- + One pair of bag lids with 6x9" speaker adaptors
- + Metal mesh speaker grilles
- + Factory latch assembly transfers to the new bag lid
- + Additional hardware, rubber gaskets, and cloth tether restraints included





ST-AK8
8 GAUGE
MOTORCYCLE AMP KIT

► **UNIVERSAL**

- + Designed for motorcycles
- + 6 foot length of red and black T-Spec® OFC power and ground wire with a T-Spec V8MANL fuse holder and 60 amp fuse protected by a black nylon braid
- + Pre-terminated ring terminals make connections to the battery simple
- + Two 4 foot pieces of 16 gauge OFC speaker wire protected by black nylon mesh makes upgrading the factory speaker wires or adding new speakers a smart choice
- + Even for those upgrading the Harmon Kardon system, the ST-AK8 comes with two 47-ohm 1/2 watt resistors to keep the factory radio outputs active
- + All the necessary installation hardware is included along with a 4" x 6" hook and loop mounting pad for micro-amplifiers to hold the amplifier in place

NEW! MPS-AK82
2 CHANNEL
MOTORCYCLE AMP KIT

► **UNIVERSAL**

- + Left/right speaker wires and 2 channel RCA are 10' long with a quick disconnect for easy removal of amplifier
- + Designed for the amplifier to be mounted in the right side saddlebag
- + 8 Gauge OFC wire
- + 6' Power and ground with ring terminals terminated
- + Power/Ground, speaker wires, and RCAs on quick disconnect for easy removal of amplifier
- + Waterproof fuse holder with (2) 30 amp fuses



BT-HD01
STREAMING INTERFACE FOR FACTORY RADIOS
MOTORCYCLE BLUETOOTH® KIT

► **FITS HARLEY-DAVIDSON® 2006-2013**

- + Adds Bluetooth® streaming from any Bluetooth capable device
- + Stream Bluetooth® audio and hear music or turn-by-turn instruction from navigation apps
- + Integrates with handlebar audio controls so that radio control is still available
- + Comes with plug-n-play harness and USB control harness



ST-AK10
10 GAUGE
MOTORCYCLE AMP KIT

► **UNIVERSAL**

- + Designed for motorcycles
- + 6 foot length of red and black T-Spec® OFC power and ground wire with a T-Spec V8MANL fuse holder and 30 amp fuse protected by a black nylon braid
- + Pre-terminated ring terminals make connections to the battery simple
- + Two 4 foot pieces of 16 gauge OFC speaker wire protected by black nylon mesh makes upgrading the factory speaker wires or adding new speakers a smart choice
- + Even for those upgrading the Harmon Kardon system, the ST-AK10 comes with two 47-ohm 1/2 watt resistors to keep the factory radio outputs active
- + All the necessary installation hardware is included along with a 4" x 6" hook and loop mounting pad for micro-amplifiers to hold the amplifier in place

NEW! MPS-AK84
4 CHANNEL
MOTORCYCLE AMP KIT

► **UNIVERSAL**

- + Front left/right speaker wires and 4 channel RCAs are 10' long with a quick disconnect for easy removal of amplifier
- + Left rear speaker wire is 10' long including a 2.5' extension jumper for added length if needed. The extension can be removed if not needed
- + Right rear speaker wire is 3' long
- + Designed for the amplifier to be mounted in the right side saddlebag
- + 8 Gauge OFC wire
- + 6' Power and ground with ring terminals terminated
- + Power/Ground, speaker wires, and RCAs on quick disconnect for easy removal of amplifier
- + Waterproof fuse holder with (2) 30 amp fuses



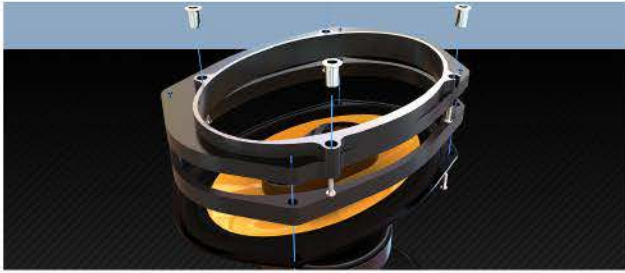
NEW! AX-MLOC-HD1
MINI 80 WATT 2 CHANNEL
LINE OUTPUT CONVERTER

► **FITS HARLEY-DAVIDSON® 2014-2017**

- + Additional speaker pod harnesses included
- + Adjustable gain for each channel
- + 80 watt max per channel
- + 12 volt signal sense turn-on

AMERICAN HARD BAG

Visit www.americanhardbag.com for additional information



NEW! SPAD-5X7-6X9-14-K Speakers are not included
5X7 TO 6X9

FACTORY LID SPEAKER ADAPTER KIT

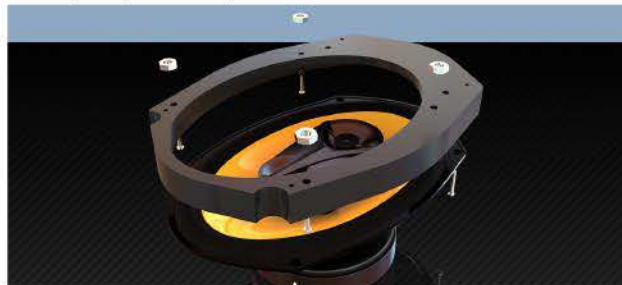
► FITS HARLEY-DAVIDSON® 2014-UP*

- + This adapter set assumes that the 6"x9" will have a spacer mounted to the front of the speaker large enough to make clearance for the speaker's movement
- + Note: This kit will not work with CVO electronic lid lock mechanisms

NEW! SPAD-5X7-6X9-FSP

FACTORY LID SPEAKER SPACER

- + If the spacer is not present, this 1/2" spacer must be added to the Factory Lid Speaker Adapter kit



NEW! SPAD-5X7-6X9-13-K Speakers are not included
5X7 TO 6X9

FACTORY LID SPEAKER ADAPTER KIT

► FITS HARLEY-DAVIDSON® 2013-EARLIER

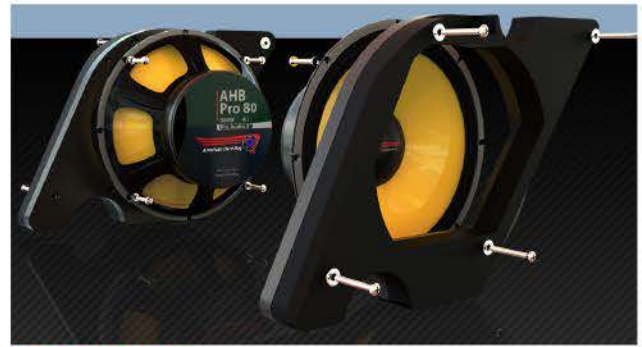
- + Fits all standard 6x9 speakers without the need for any additional spacers or hardware



NEW! AGSR10-CM-L LEFT Speakers are not included
NEW! AGSR10-CM-R RIGHT Speakers are not included
FITS SINGLE 10"

SUBWOOFER MOUNT KITS FOR SADDLEBAGS

► FITS HARLEY-DAVIDSON® 2014-UP*



NEW! AGSRPRO-80 Speakers are not included
SINGLE 8" PER BAG

PRO 80 AUDIO WOOFER MOUNT KIT

► FITS HARLEY-DAVIDSON® 2014-UP*

- + The Pro 80 comes as a pair (left and right) only
- + Includes everything needed to properly mount (2) Pro Audio 8" woofers (1 in each bag) and also reinforce the saddlebags for higher output



NEW! AGSRPRO880-L LEFT Speakers are not included
NEW! AGSRPRO880-R RIGHT Speakers are not included
TWIN 8" WOOFERS PER BAG

PRO 880 AUDIO WOOFER MOUNT KIT

► FITS HARLEY-DAVIDSON® 2014-UP*

- + Add up to (4) 8" full range woofers with the Pro 880 kit
- + Complete with powder coated pressed steel grills and all s.s. hardware



NEW! AGSRPRO-100-L-CM LEFT Speakers are not included
NEW! AGSRPRO-100-R-CM RIGHT Speakers are not included
SINGLE 10" WOOFER PER BAG

PRO 100 AUDIO WOOFER MOUNT KIT

► FITS HARLEY-DAVIDSON® 2014-UP*

- + Allows fitment of (1) 10" midrange Hertz SV 250.1 woofer in a standard Harley saddlebag
- + Specialized Router Bit Included

ADD IT ON!

Metra's universal consoles can be used for any application where you want to add an audio system where none exists. Both these models will accept two 6.5 inch speakers and any kind of audio device. They can be used on boats, ATVs, UTVs, golf carts, tractors or anywhere else that can be thought of. They are built from strong ABS plastic and will help shield electronics from the elements.



OVERHEAD CONSOLE

Single-DIN
radio opening



OH-DIN01

No radio opening



OH-UNI01

OH-UNI01/OH-DIN01 SINGLE-DIN OVERHEAD CONSOLE

► UNIVERSAL

- + Easy install
- + Automotive/marine grade ABS with UV
- + Single-DIN opening or without for customized gauge mount
- + Water resistant
- + Accommodates one radio device and two speakers
- + Paintable for custom install
- + OH-DIN01 with Single-DIN radio cut out



Can Speakers

The MPS-65CSRGB speakers are designed for whatever the powersports customer can throw at it. The rugged, UV protected, high temp ABS provides a durable housing by employing a dual wall design. The 6.5" speakers are polypropylene and the tweeters are PEI (Polyetherimide) so they can handle getting wet, with a IP rating of IPX6, but still perform like they were intended. A passive 3" radiator provides more bass response to give the speakers a more robust sound. As an added feature the MPS-65CSRGB includes RGB lighting that can be connected to Heise® RGB controllers. To make the speakers more versatile, they come with two mounting clamps with rubber inserts (2" and 1-3/4") and two separate rubber inserts (1-7/8" and 1-1/2") so that there are 4 mounting size options. Also the speakers can be rotated so they can be positioned optimally for the best sound.

CAN SPEAKERS & POWER AMPLIFIERS

NEW! MPS-65CSRGB UNIVERSAL CAN SPEAKERS

▶ 6.5"

- + Housing: Marine Grade, UV treated, molded, High Temp ABS. Dual wall designed for strength and rigidity
- + Woofer: 6.5" Polypropylene designed for use in wet locations, 25mm voice coil, 11 oz magnet with 3" passive radiator for extended bass response
- + Tweeter: 20mm PEI (Polyetherimide) bridge mounted into grill
- + 2" and 1-3/4" universal clamps with 2", 1 7/8", 1-3/4", and 1-1/2" rubber inserts, rotational mounting base for optimum speaker placement
- + Waterproof RGB lighting on back of tweeter reflects off cone of woofer
- + 12' of flexible over-jacketed OFC copper wire with waterproof connector. Mating waterproof connector breaks out to (2) 18 AWG speaker wires and a Micro DIN connector with 22 AWG RGB wire (designed to be used with Heise® RGB controllers)
- + Water Resistance: IPX6 + Impedance: 4 ohms + Crossover: 6db passive + Freq response: 60Hz to 20 KHz
- + SPL: 88.5 db + Power handling: RMS – 60 watts, Peak – 120 watts + Sold as a pair + Warranty: 1 Year



Micro Amplifiers

Metra PowerSports introduces two new micro-amplifiers that are designed to be used in some harsh environments. With an IP rating of IPX6 the amplifiers are designed to get wet and not miss a beat. There are two models; a 4 channel that is 60 watts per channel and the 2 channel which is 100 watts per channel. Both amps are bridgeable to provide more flexibility. The input side of the amplifiers have an 8' cable with an IP68 connector that is designed to plug directly into the MPS-BTK (Bluetooth controller sold separately). The amplifiers come with a pigtail that allows the user to use any radio or Bluetooth controller with an RCA output with these amplifiers if the MPS-BTK is not being used. The power cables are 8' long with a waterproof fuse holder so to reach any battery location whether it be in a side-by-side or motorcycle.

AMPLIFIERS



NEW! MPS-AMP100X2

2 CHANNEL

MICRO-AMPLIFIER

- ▶ 100 WATTS RMS X 2 CHANNELS @ 4 OHMS
- ▶ 150 WATTS RMS X 2 CHANNELS @ 2 OHMS
- ▶ 300 WATTS RMS X 1 CHANNEL @ 4 OHMS

+ Adjustable 12db high pass/low pass crossovers

CHIPSET: Full Range Class D using IR (International Rectifier) control chips

PCB BOARD: 4 layer, conformal coated

WATER RESISTANCE: IPX6

CROSSOVER POINTS: 40 Hz to 500Hz

THD: .07%

S/N RATIO (1 WATT @ 4 OHMS) : > 90db

GAIN RANGE: .2 volts – 5 volts

FREQ RANGE: 20 Hz – 20 KHz

FUSE HOLDER: IP68 rated

FUSING: 30 amp (Dual 15 AMP fuses)

W 7.91"/201MM

H 1.54"/39.2MM

D 4.18"/106.4MM



NEW! MPS-AMP60X4

4 CHANNEL

MICRO-AMPLIFIER

- ▶ 60 WATTS RMS X 4 CHANNELS @ 4 OHMS
- ▶ 90 WATTS RMS X 4 CHANNELS @ 2 OHMS
- ▶ 180 WATTS RMS X 2 CHANNELS @ 4 OHMS

+ Adjustable 12db high pass/low pass crossovers

CHIPSET: Full Range Class D using IR (International Rectifier) control chips

PCB BOARD: 4 layer, conformal coated

WATER RESISTANCE: IPX6

CROSSOVER POINTS: 40 Hz to 500Hz

THD: .07%

S/N RATIO (1 WATT @ 4 OHMS) : > 90db

GAIN RANGE: .2 volts – 5 volts

FREQ RANGE: 20 Hz – 20 KHz

FUSE HOLDER: IP68 rated

FUSING: 40 amp (Dual 20 AMP fuses)

W 7.519"/191MM

H 1.54"/39.2MM

D 4.18"/106.4MM



HEAVY DUTY CASE & LID



12 MONTH LIMITED WARRANTY

AGM BATTERIES

ONE TOUGH BATTERY

Shuriken® offers batteries for powersports, motorcycle, ATV, marine and RV applications. These new batteries are designed to fit all of the most popular applications based on today's BCI and JIS fitment standards. Perfect for replacing factory batteries in most powersports applications.

The Power Cells are extremely resistant to excessive heat and strong vibration. With super-low ESR and closely packed pure lead plates, each power cell packs a punch. Shuriken® Power Cells are designed to deliver the constant voltage needed for optimum performance. These batteries all use absorbed glass mat (AGM) technology and are fully charged, ready to use direct from the factory. They are non-spillable and maintenance free. Because of the AGM design, they can be discharged and recharged hundreds of times with a one-year replacement warranty.



AGM TECHNOLOGY



NON-SPILLABLE



VIBRATION RESISTANT



ALL CLIMATE



MAINTENANCE FREE



LONG LIFE

MARINE + RV



SK-MBT-55 AGM (ABSORBED GLASS MAT) TECHNOLOGY 12V DEEP CYCLE BATTERY

▶ 785 CRANK AMPS ▶ 55 AMP HOURS

- + 12V Marine grade battery
- + Threaded & standard posts
- + Can be discharged and recharged 100's of time
- + 120 minutes reserve

W 10.75"/273MM **H** 6.89"/175MM
D 6.61"/168MM **42.5LBS/19.3KG**

SK-MBT-100 AGM (ABSORBED GLASS MAT) TECHNOLOGY 12V DEEP CYCLE BATTERY

▶ 800 CRANK AMPS ▶ 100 AMP HOURS

- + 12V Marine grade battery
- + Threaded & standard posts
- + Can be discharged and recharged 100's of time
- + 190 minutes reserve

W 13"/330MM **H** 8.54"/217MM
D 6.85"/174MM **68.3LBS/31KG**



SK-BTX9-BS
AGM (ABSORBED GLASS MAT) TECHNOLOGY
12V STARTING BATTERY

▶ 125 CRANK AMPS ▶ 8 AMP HOURS

- + Fits JIS battery type BTX9-BS applications
- + Will replace OE battery in Kawasaki, Suzuki and others (Download the latest fitment chart at ShurikenOnline.com)
- + Factory activated ready for use
- + Maintenance free

W 5.88"/149MM **H** 4.13"/105MM
D 3.44"/87MM **6.8LBS/3.1KG**



SK-BTX12-BS
AGM (ABSORBED GLASS MAT) TECHNOLOGY
12V STARTING BATTERY

▶ 180 CRANK AMPS ▶ 10 AMP HOURS

- + Fits JIS battery type BTX12-BS applications
- + Will replace OE battery in Honda, Suzuki, Aprilia and others (Download the latest fitment chart at ShurikenOnline.com)
- + Factory activated ready for use
- + Maintenance free

W 5.88"/149MM **H** 5.13"/130MM
D 3.5"/89MM **9LBS/4.1KG**



SK-BTX14-BS
AGM (ABSORBED GLASS MAT) TECHNOLOGY
12V STARTING BATTERY

▶ 230 CRANK AMPS ▶ 12 AMP HOURS

- + Fits JIS battery type BTX14-BS applications
- + Will replace OE battery in BMW, Honda, Kawasaki and others (Download the latest fitment chart at ShurikenOnline.com)
- + Factory activated ready for use
- + Maintenance free

W 5.88"/149MM **H** 5.75"/146MM
D 3.44"/87MM **10.4LBS/4.7KG**



SK-BTX20L-BS
AGM (ABSORBED GLASS MAT) TECHNOLOGY
12V STARTING BATTERY

▶ 310 CRANK AMPS ▶ 18 AMP HOURS

- + Fits JIS battery type BTX20L-BS applications
- + Will replace OE battery in Buell, Harley, Honda, Triumph and others (Download the latest fitment chart at ShurikenOnline.com)
- + Factory activated ready for use
- + Maintenance free

W 6.88"/175MM **H** 6.13"/156MM
D 3.44"/87MM **15.2LBS/6.9KG**



SK-BTX30L
AGM (ABSORBED GLASS MAT) TECHNOLOGY
12V STARTING BATTERY

▶ 420 CRANK AMPS ▶ 30 AMP HOURS

- + Fits JIS battery type BTX30L-BS applications
- + Will replace OE battery in Harley, Artic Cat, Polaris and others (Download the latest fitment chart at ShurikenOnline.com)
- + Factory activated ready for use
- + Maintenance free

W 6.56"/167MM **H** 5.88"/175MM
D 5.16"/131MM **22.9LBS/10.4KG**



NEW! BTL09A120C
LITHIUM IRON PHOSPHATE (LiFePO4)
12V ENGINE START BATTERY

▶ 120 LCA ▶ 120 AMP HOURS

- + Lead-Acid Replacement Range: 7-9(Ah)
- + Max Charge Rate: 10A
- + Agency Approvals: CE, UN 38.3
- + Charging requires either the 22-0199-DL-WH or the 22-0209-DL-WH charger

W 2.2"/56MM **H** 3.35"/85MM
L 4.21"/107MM **1.2LBS/.544KG**

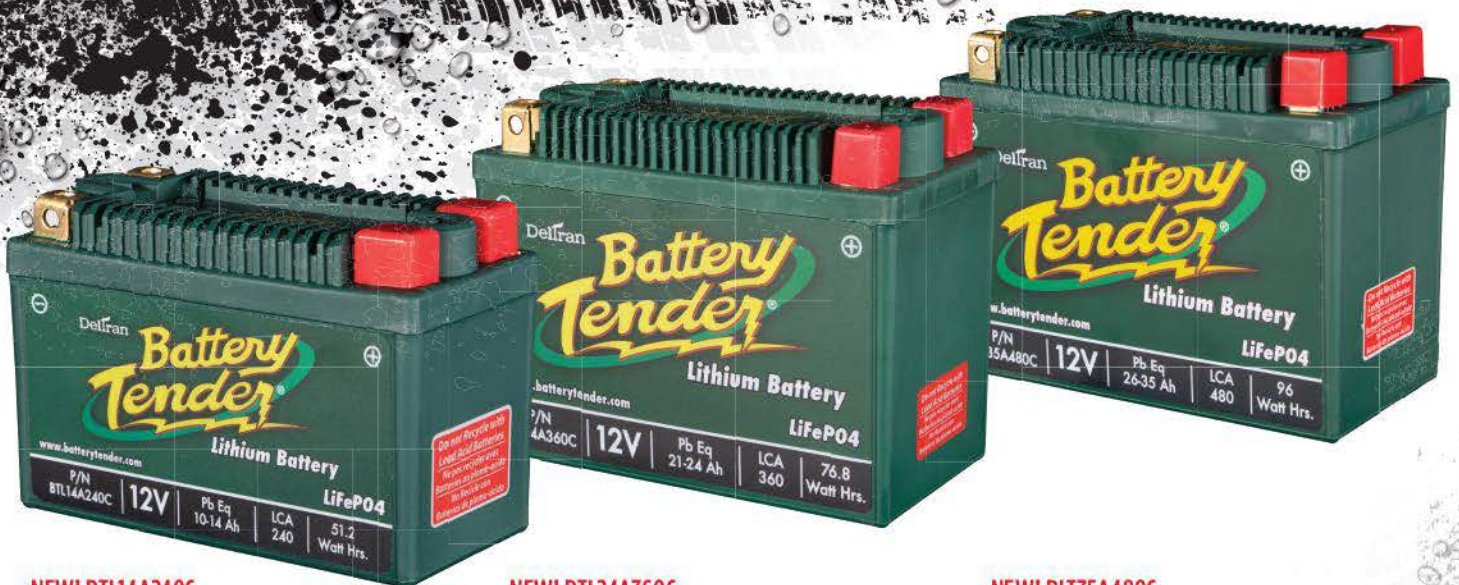
NEW! BATTERY TENDER® PRODUCTS

Deltran Battery Tender's® line of Lithium Iron Phosphate (LiFePO4) engine start batteries are designed to replace Flooded, AGM, and Gel cell lead acid batteries in powersport applications such as motorcycles, ATVs, personal watercraft, lawn mowers, utility vehicles, scooters, and dirt bikes.

- + 18 month Shelf Life
- + Up to 80% lighter than Lead Acid Equivalent
- + 5X the Life of a Lead Acid Battery
- + Quad Terminal Configuration for ease of installation
- + 2000+ Cycles at 80% Depth of Discharge
- + Can be mounted in any direction
- + Lithium Batteries do not sulphate
- + Warranty: 3 Years - Limited

NOTE: At this time, batteries can only be shipped ground.

LITHIUM BATTERIES



NEW! BTL14A240C
LITHIUM IRON PHOSPHATE (LiFePO4)
12V ENGINE START BATTERY

▶ 240 LCA ▶ 240 AMP HOURS

- + Lead-Acid Replacement Range: 10-14(Ah)
- + Max Charge Rate: 10A
- + Agency Approvals: CE, UN 38.3
- + Charging requires either the 22-0199-DL-WH or the 22-0209-DL-WH charger

W 2.55"/134MM **H** 8"/203MM
L 6.75"/171MM **1.76LBS/.79KG**

NEW! BTL24A360C
LITHIUM IRON PHOSPHATE (LiFePO4)
12V ENGINE START BATTERY

▶ 360 LCA ▶ 360 AMP HOURS

- + Lead-Acid Replacement Range: 21-24(Ah)
- + Max Charge Rate: 10A
- + Agency Approvals: CE, UN 38.3
- + Charging requires either the 22-0199-DL-WH or the 22-0209-DL-WH charger

W 3.38"/86MM **H** 5.11"/130MM
L 6.49"/165MM **2.6LBS/1.18KG**

NEW! BLT35A480C
LITHIUM IRON PHOSPHATE (LiFePO4)
12V ENGINE START BATTERY

▶ 480 LCA ▶ 480 AMP HOURS

- + Lead-Acid Replacement Range: 26-35(Ah)
- + Max Charge Rate: 10A
- + Agency Approvals: CE, UN 38.3
- + Charging requires either the 22-0199-DL-WH or the 22-0209-DL-WH charger

W 3.38"/86MM **H** 5.11"/130MM
L 6.49"/165MM **3.75LBS/1.7KG**

BATTERY TENDER® BATTERY CHARGERS + JUMP STARTER



NEW! 22-0199-DL-WH SELECTABLE BATTERY TYPE LITHIUM BATTERY CHARGER

▶ 800 JUNIOR ▶ 12V@800mA AMP OUTPUT

- + Charger weight: 1 lb
- + Size: 4" x 2" x 1.37"
- + Plugs directly into the wall
- + ISM™ microcontroller constantly updates charge sequence for smooth transitions between charging steps
- + Spark proof
- + Short circuit protected
- + Reverse hook-up protection
- + Safety timer
- + Selectable for AGM, flooded, GEL, or Lithium (LiFePO4) batteries
- + Includes alligator clips and fused ring terminals
- + 5 Year Warranty



NEW! 22-0209-DL-WH INFINITE SEQUENTIAL MONITORING (ISM™) SELECTABLE LITHIUM BATTERY CHARGER

▶ 4 AMPS ▶ 12V/6V@4A SWITCHABLE

- + AGM/Standard or GEL/Lithium Iron switchable
- + ISM™ of the fully automatic 4-step charge process (qualification, bulk charge, absorption, float)
- + Microprocessor controlled
- + Spark proof even when output leads touch
- + Reverse Polarity Protection - no charge or battery damage
- + State of charge LED indicator
- + Includes rings & clips
- + Shipping Weight: 3.15lbs
- + 5 Year Warranty



NEW! 22-0211-DL-WH INFINITE SEQUENTIAL MONITORING (ISM™) SELECTABLE BATTERY CHARGER

▶ 1.25 AMPS ▶ 120VAC INPUT

- + Input: 120VAC
- + Output: Switchable from 6 Volts or 12 Volts DC @ 1.25 amps
- + Reverse Polarity Protection to ensure user safety
- + Complete 4-step charging program (Initialization, Bulk Charge, Absorption Mode, Float Mode)
- + Safety timer: 72 hours
- + Perfect for all lead-acid, flooded or sealed maintenance free batteries (AGM and gel cell) NOT FOR LITHIUM BATTERIES
- + Listed in California Appliance Efficiency Database
- + Agency Approvals: UL/ BC
- + 5 year warranty



+ Charger Weight: 14.6 LBS.

NEW! 30-0004-WH JUMP START CARS, MOST BOATS, LIGHT TRUCKS, MOTORCYCLES, ATVS AND MORE. JUMP STARTER

▶ 1200A AGM ▶ 12V DC POWER | USB

FEATURES:

- + Battery level button allows to see battery level indicators
- + Battery capacity indicators identifies the level of charge remaining in the internal battery
- + Bright LED light for emergency use
- + Internal Battery Charging Port
- + On/Off USB Switch + USB 2100MA Port
- + Charging Status Indicator + AC Charging Jack
- + 12V DC Socket + DC Indicator LED
- + 12-Month Limited Warranty
- + Includes Boosting Cables

SAFETY FEATURES:

- + Spark Proof + Reverse Polarity Protection
- + On/Off Boost Power Switch
- + 12V DC Socket has 15A replaceable fuse overload protection

TECHNICAL SPECIFICATIONS:

- + Dimensions: 11.5"L x .5W x 9.5H
- + Internal Battery (Capacity/Type): 1200Ah (AGM) sealed lead-acid battery
- + Heavy Duty Cables (Size/Length): 6G*2ft.
- + Adapter: 15V DC@800 mA
- + Cigarette lighter plug maximum current: 15A
- + Operating temp. range: 0°C-40°C (32-104 °F)



LED LIGHTING

WORK



HIGH PERFORMANCE LED LIGHTING

Heise LED Lighting Systems®, by Metra Electronics, are exclusively developed and manufactured to meet all international standards. Our range of lighting integrates advanced thermal management, short circuit and open circuit protection and many other innovative features. All products undergo rigorous testing during the development and manufacturing process and again before leaving the factory. Metra's history, experience and approach to engineering and manufacturing ensure that their products stand out among the competitors and are the highest quality lights available on the market.

Auxiliary driving and fog lights are intended for use solely as auxiliary lighting. They are not intended to be used for headlight purposes, nor are they certified for headlight usage. Auxiliary lights are designed to improve visibility during night time driving and inclement weather. Irresponsible use of any auxiliary light can be dangerous and illegal. Auxiliary driving lights are intended to supplement the high-beam of a standard headlamp system. They are not intended for use alone or with the low-beam of a standard headlamp system. Lighting laws vary from state to state.



CREE LEDs

HE-WL2 DUAL WORK LED LIGHT

▶ 3.625 X 1.75 INCH ▶ 2 LED

SPECS

- + Input Voltage: 10-30V DC
- + Wattage: 10W (2-5W CREE LEDs)
- + Raw Lumens: 800
- + LUX @ 10M: 28
- + Color Temperature: 6000K
- + Beam Pattern: 90° Flood
- + Size: 3.50"W x 2.50"H x 2.50"D

CONSTRUCTION

- + Housing Material: Die-cast Aluminum Housing
- + Housing Color: Black
- + Lens Material: PC
- + Mounting Bracket: Die-cast Aluminum
- + Hole Dimensions: Mounting Bolt Drill - .25"
- + Electronics: Integrated-Epoxy Encapsulated
- + Hardware: Stainless 316

OPERATION

- + Current Consumption: .4 amps @ 13.8 volts
- + IP Rating: IP67
- + Protections: Reverse Polarity



HE-DL10
SQUARE
DRIVING LED LIGHT

▶ 2 INCH ▶ 1 LED

SPECS

- + Input Voltage: 10-30V DC
- + Wattage: 10W (1-10W CREE LED)
- + Raw Lumens: 600
- + LUX @ 10M: 10
- + Color Temperature: 6000K
- + Beam Pattern: 60° Flood
- + Size: 2"W x 3"H x 3"D

CONSTRUCTION

- + Housing Material: Die-cast Aluminum Housing
- + Housing Color: Black
- + Lens Material: PC
- + Mounting Bracket: Stainless Steel
- + Hole Dimensions: Mounting Bolt Drill - .25"
- + Electronics: Integrated-Epoxy Encapsulated
- + Hardware: Stainless 316

OPERATION

- + Operating Temperature: -40 °C to +60 °C
- + Current Consumption: .6 amps @ 13.8 volts
- + IP Rating: IP67
- + Protections: Reverse Polarity



DRIVING LED LIGHTS



HE-DL12
ROUND
DRIVING LED LIGHT

▶ 2 INCH ▶ 1 LED

SPECS

- + Input Voltage: 10-30V DC
- + Wattage: 10W (1-10W CREE LED)
- + Raw Lumens: 600
- + LUX @ 10M: 10
- + Color Temperature: 6000K
- + Beam Pattern: 60° Flood
- + Size: 2"W x 3.25"H x 2.75"D

CONSTRUCTION

- + Housing Material: Die-cast Aluminum Housing
- + Housing Color: Black
- + Lens Material: PC
- + Mounting Bracket: Stainless Steel
- + Hole Dimensions: Mounting Bolt Drill - .25"
- + Electronics: Integrated-Epoxy Encapsulated
- + Hardware: Stainless 316

OPERATION

- + Operating Temperature: -40 °C to +60 °C
- + Current Consumption: .4 amps @ 13.8 volts
- + IP Rating: IP67
- + Protections: Reverse Polarity



NEW! MPS-DL
IPX5 RATED
DOME LIGHT FIXTURE

▶ 6 WATT LED

- + IPX5 rated for RV, Marine, UTV or any vehicle
- + 12 pieces of .5 watt high output/power SMD LED's
- + Touch control on/off and 10 step dimmer
- + Color temperature: 6000-6500K warm white
- + 50,000 hours of life expectancy

ROLL BAR MOUNTS



HE-RBM1 1 INCH

HE-RBM125 1.25 INCH

HE-RBM150 1.5 INCH

HE-RBM175 1.75 INCH

▶ 2 PACK

- + Black plated aluminum to be attractive and strong
- + Rubber gasket included to protect the roll bar
- + Use with light bars, driving and work lights
- + Allen keys included
- + Bulk parts are available

MOTORCYCLE LED HEADLIGHTS



CREE 
LEDs



HE-BHL701 BLACK FRONT FACE
HE-SHL701 SILVER FRONT FACE
ROUND

MOTORCYCLE LED LIGHTS

▶ 7 INCH ▶ 6 LED

- + (2) 10 watt and (4) 5 watt CREE LEDs
- + 2000LM low beam, draws 1.8a @ 13.8v
- + 3000LM high beam, draws 2.6a @ 13.8v
- + DOT approved for on-road use
- + LED color: 6500K
- + Polycarbonate lens cover is virtually unbreakable
- + H4 connector
- + Designed for use with most motorcycles using a 7" headlight



CREE 
LEDs



HE-BHL703 BLACK FRONT FACE
HE-SHL703 SILVER FRONT FACE
ROUND WITH PARTIAL HALO

MOTORCYCLE LED LIGHTS

▶ 7 INCH ▶ 6 LED

- + (6) 10 watt CREE LEDs
- + White partial angel eye halo connects to running lights
- + Each partial halo side flashes amber with turn signal connection
- + 2000LM low beam, draws 2.1a @ 13.8v
- + 3000LM high beam, draws 2.9a @ 13.8v
- + DOT approved for on-road use
- + LED color: 6500K
- + Polycarbonate lens cover is virtually unbreakable
- + H4 connector
- + Designed for use with most motorcycles using a 7" headlight



CREE 
LEDs



HE-BHL702 BLACK FRONT FACE
HE-SHL702 SILVER FRONT FACE
ROUND WITH HALO

MOTORCYCLE LED LIGHTS

▶ 7 INCH ▶ 4 LED

- + (4) 10 watt CREE LEDs
- + White angel eye halo connects to running lights
- + 2000LM low beam, draws 1.9a @ 13.8v
- + 3000LM high beam, draws 2.7a @ 13.8v
- + DOT approved for on-road use
- + LED color: 6500K
- + Polycarbonate lens cover is virtually unbreakable
- + H4 connector
- + Designed for use with most motorcycles using a 7" headlight

OSRAM 



HE-BHL704 BLACK FRONT FACE
ROUND WITH PARTIAL HALO
MOTORCYCLE LED LIGHTS

▶ 7 INCH ▶ 13 LED

- + (13) 5 watt Osram LEDs
- + White partial angel eye halo connects to running lights
- + 841LM low beam, draws 1.3a @ 13.8v
- + 1834LM high beam, draws 2.2a @ 13.8v
- + DOT approved for on-road use
- + LED color: 6500K
- + Polycarbonate lens cover is virtually unbreakable
- + H4 connector
- + Designed for use with most motorcycles using a 7" headlight



CREE LEDs



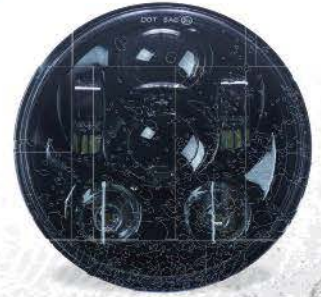
HE-BHL561 BLACK FRONT FACE
HE-SHL561 SILVER FRONT FACE
ROUND WITH PARTIAL HALO
MOTORCYCLE LED LIGHTS

▶ 5.6 INCH ▶ 8 LED

- + (8) 5 watt CREE LEDs
- + White partial angel eye halo connects to running lights
- + 1350LM low beam, draws 1.6a @ 13.8v
- + 1770LM high beam, draws 2.1a @ 13.8v
- + DOT approved for on-road use
- + LED color: 6500K
- + Polycarbonate lens cover is virtually unbreakable
- + H4 connector
- + Designed for use with most motorcycles using a 5.6" headlight

MOTORCYCLE LED HEADLIGHTS

CREE LEDs



HE-BHL562 BLACK FRONT FACE
HE-SHL562 SILVER FRONT FACE
ROUND
MOTORCYCLE LED LIGHTS

▶ 5.6 INCH ▶ 8 LED

- + (8) 5 watt CREE LEDs
- + 1350LM low beam, draws 1.2a @ 13.8v
- + 1770LM high beam, draws 1.9a @ 13.8v
- + DOT approved for on-road use
- + LED color: 6500K
- + Polycarbonate lens cover is virtually unbreakable
- + H4 connector
- + Designed for use with most motorcycles using a 5.6" headlight



OSRAM

HE-RGHKB BLACK FRONT FACE
HE-RGHKS SILVER FRONT FACE
DUAL ROUND
MOTORCYCLE LED LIGHTS
FITS HARLEY-DAVIDSON® ROAD GLIDES

▶ 5.6 INCH ▶ 9 LED ▶ 2004-2013

- + (9) 5 watt Osram LEDs
- + 2000LM low beam, draws 1.2a @ 13.8v
- + 3500LM high beam, draws 1.9a @ 13.8v
- + DOT approved for on-road use
- + LED color: 6500K
- + Polycarbonate lens cover is virtually unbreakable
- + H4 connectors



HE-HB7
ROUND WITH PARTIAL HALO
RETAINING RING

▶ 7 INCH
▶ FITS 2013-OLDER
HARLEY-DAVIDSON®

- + Use when replacing 7" headlights on 2013 and older Harley-Davidson® motorcycles
- + Zinc plated for corrosion resistance



NEW! HE-H7LED
NEW DESIGN
HEADLIGHT KIT

▶ 6000 LUMENS

- + 25 Watts per bulb
- + 6500K color temperature
- + Compact radial heatsink for better heat dissipation, less depth of space and easy installs
- + Voltage and current monitoring circuits are inside the compact radial heatsink housing and protected from the elements
- + 6500K color spectrum with 3000K (golden yellow) and 8000K (light blue tint) films
- + Rotatable bulb can adjust the beam pattern for the vehicle
- + IP67 rated
- + Sold as a pair

MOTORCYCLE LED AUXILIARY



HE-BAL451 BLACK FRONT FACE
HE-SAL451 SILVER FRONT FACE
 AUXILIARY PAIR
MOTORCYCLE LED LIGHTS

▶ 4.5 INCH ▶ 6 LED

- + (6) 5 watt CREE LEDs
- + 1260LM, draws 1.3a @ 13.8v
- + DOT approved for on-road use
- + LED color: 6500K
- + Polycarbonate lens cover is virtually unbreakable
- + 9145 connector with pigtail

CREE 
 LEDs



HE-BAL452 BLACK FRONT FACE
HE-SAL452 SILVER FRONT FACE
 AUXILIARY PAIR WITH HALO RING
MOTORCYCLE LED LIGHTS

▶ 4.5 INCH ▶ 6 LED

- + (6) 5 watt CREE LEDs
- + 1260LM, draws 1.6a @ 13.8v with halo
- + DOT approved for on-road use
- + LED color: 6500K
- + Polycarbonate lens cover is virtually unbreakable
- + 9145 connector with pigtail

CREE 
 LEDs

ACCENT LIGHTING PODS

CREE 
 LEDs

HE-TL1 WHITE
HE-TL1A AMBER
HE-TL1B BLUE
HE-TL1G GREEN
HE-TL1R RED

AUXILIARY
LIGHTING PODS

▶ 1.5 X 3 INCH ▶ 3 LED

- SPECS**
- + Input Voltage: 10-30V DC
 - + White: Wattage: 15W (3-5W CREE LEDs)
 - + Color: Wattage: 9W (3-3W CREE LEDs)
 - + Raw Lumens: 1200/720
 - + Beam Pattern: 120° Flood

- CONSTRUCTION**
- + Housing Material: Black Die-cast Aluminum Housing
 - + Lens Material: PC
 - + Mounting: Two Rubber Bases Included
 - + Hardware: Black Screws

- OPERATION**
- + Operating Temperature: -40° C to +60° C
 - + Current Consumption: .2 amps @ 13.8 volts
 - + IP Rating: IP68



WHITE



HE-ARB1
 ANGLED RUBBER
MOUNTING BASE

The angled base is for use with the HE-TL1, HE-TL1A, HE-TL1B, HE-TL1G & HE-TL1R



AMBER



RED



GREEN



BLUE



H-B350-BLK BLUE/BLK
H-R350-BLK RED/BLK
H-W350-BLK WHITE/BLK
 3 METER ROLL BLACK BASE
5050 LED STRIPS



▶ 10 MM WIDE ▶ 60 LED PER METER

- + Water resistant covering
- + 3M™ double sided tape provides a strong bond
- + 120 degree viewing angle
- + LED strips can be cut at every 3rd LED
- + 5 meter strip only draws 4.5 amps of current
- + Heise® branded retail blister packaging

ACCESSORIES LED STRIPS

H-QC5050
 1 COLOR
QUICK CONNECT



▶ 4 PACK ▶ 60 LED PER METER

- + Quick connector for single color 5050 LED

H-EC5050
 1 COLOR
EXTENSION CONNECT



▶ 2 PACK ▶ 60 LED PER METER

- + Extension connector for single-color 5050 LED

RGB
EXTENSION CONNECT



▶ 2 PACK ▶ 60 LED PER METER

- + Extension connector for 5MRGB-1 LED lights

H-ECRGB-1 6" **NEW! H-ECRGB-32 32"** **NEW! H-ECRGB-72 72"**

H-WSV WHITE PAIR
H-ASV AMBER PAIR
H-BSV BLUE PAIR
H-GSV GREEN PAIR
H-RSV RED PAIR
SIDE VIEW LED

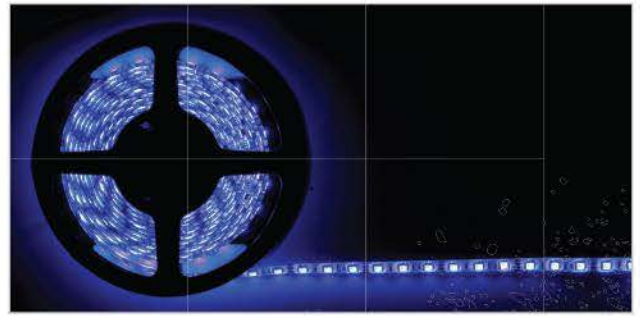
SIDE VIEW LED LIGHTS



▶ 6 MM WIDE ▶ 24 INCH ▶ 60 LED PER LIGHT STRIP

- + Waterproof, designed to take the abuse of the elements
- + 3M™ double-sided tape provides a good strong bond
- + Each LED strip only draws .3 amps of current
- + The LED strip can be cut at every 3rd LED

5050 LED STRIPS + RGB LED STRIPS + CONTROLS



H-5MRGB-1
 5 METER BLACK BASE
16 COLOR RGB LED LIGHTS

▶ 10 MM WIDE ▶ 60 LED PER METER

- + 16 different selectable colors
- + 5 meter flexible LED roll
- + 5050 RGB LEDs
- + 60 LEDs per meter, 300 total
- + LED strip is 10mm wide and 2.5mm thick
- + IP65 rated water resistant covering
- + 3M™ adhesive tape backing
- + 12 volt DC input
- + Able to be cut every 3rd LED
- + H-RGBC-1 control unit is required (sold separately)

H-RGBC-1
RGB CONTROLLER

▶ 1.2 AMPS ▶ 16 COLOR RGB CONTROL UNIT

- + 24 button credit card sized remote included
- + IR LED is attached to control box by a 17" long cord
- + Cord for LEDs to plug into is 15" long cord
- + On/Off buttons with built-in 8 way dimmer
- + "Flash", "Strobe", "Fade" and "Smooth" buttons
- + Draws 1.2 amps



3M06396
3M
ADHESION PROMOTER

▶ 25 PACK BULK

- + Wipe surface with this to provide a strong bond between the surface and the 3M tape on the back of the LEDs
- + Packed as single packets



RGB LED LIGHTING ACCESSORIES

NEW! MPS-RGBWWS4

RGB

POD LEDES

▶ 4 LEDS PER POD

- + String of 4 LEDs per pod designed to be used in wheel wells or anywhere else that will be getting wet
- + IP68
- + Use with MPS-RGBC-4



NEW! MPS-BTK

FITS INDUSTRY STANDARD OPENING: 1.45" X .83"

BLUETOOTH® CONTROLLER

▶ WIRELESS

- + One knob does all control features: track/volume/power/source/play/pause/pairing (Patented)
- + Complete wireless connection via Bluetooth® 4.0
- + Play music or other sources with any Bluetooth® enabled device
- + Play music from any media player with 3.5mm auxiliary output
- + Built-in line driver for 3x voltage output
- + Remembers paired devices and automatically reconnects in connected order when device is present
- + Patent pending single wire controller connection directly to a Metra PowerSports Amplifier for complete control (Mini DIN)
- + Universal adapter included for use with other amplifiers



NEW! MPS-35USBV

DIGITAL

VOLTMETER

▶ DIGITAL

- + Snap-in panel with 3.5/USB/voltmeter
- + Provides 2.1A 5 Volt charging
- + Can be used with MPS-BTK
- + 3.5MM is pass through



NEW! MPS-ASCKIT

RGB

AUDIO SOURCE/RGB KIT

▶ JPM5-65CSRGB & MPS AMPLIFIERS

Includes:

- + Bluetooth knob (MPS-BTK)
- + 3.5/USB/Voltmeter (MPS-35USBV)
- + RGB controller (MPS-RGBC-4)



NEW! MPS-RGBC-4

WATERPROOF

RGB LED CONTROLLER

▶ 10 SPEEDS | 20 MODES

- + Waterproof RGB LED Controller via smartphone APP
- + Use EZ LED APP to control your infinite colors, 10 speeds, 20 dynamic modes
- + LED's flash to your music via your smartphone Bluetooth® feature
- + Operational voltage: 12-24V DC
- + Maximum Current: 18a
- + APP operating range 60 feet (20m) unobstructed
- + Outputs: (4) Micro DIN Male connectors
- + Fused power and ground wires for easy connection
- + Use with MPS-RGBWWS4



NEW! MPS-RGBWWS4

RGB

POD LED STRING KIT

▶ 4 PODS ▶ 1 CONTROLLER

- + Includes four (4) sets of Pod LED string lights, MPS-RGBWWS4
- + Includes one (1) hideaway RGB Controller, MPS-RGBC-4

VEHICLE SAFETY IS A PRIORITY

The iBEAM® goal is to bring innovation and value to every product in their revolutionary line of Vehicle Safety Systems. iBEAM® products feature high levels of engineering with the installer in mind while using only the finest materials available. This combination provides maximum performance in all price ranges.

Does your vehicle have more blind spots than a bat? See the light with our Dash Cam that's small enough to fit on any motorcycle or power sports vehicle!



FULL
COLOR



WIFI
CONNECT



G-FORCE
SENSOR



NEW! TE-DVR-W WINDOW MOUNT DASH CAMERA

► DVR 1080p HD

- + 1080p HD resolution videos and photos
- + WiFi connects to mobile app for viewing and settings
- + Press one button for quick photo
- + Can be used forward or rear facing
- + Supports up to 32GB Micro-SD card (card not included)
- + G-Force sensor detects collisions and locks video from being overwritten
- + Plugs into standard 12v outlet

DASH CAMERA





V12GTRCA18IN 1.5 FT | 0.45 M

V12GTRCA3 3 FT | 0.91 M

V12GTRCA10 10 FT | 3.05 M

V12GTRCAY1 Y-1 | 1F-2M

RCA

2-CHANNEL AUDIO CABLES

► V12GT SERIES

- + Mini metal RCA ends
- + Full oxygen-free copper
- + Twisted pair construction for noise reduction
- + Soft touch super flexible jacket
- + Packaged in high-end retail box

T-SPEC® AUDIO

The T-Spec goal is to bring innovation and value to every product in a revolutionary line of powersports accessories. T-Spec products feature high levels of engineering with the installer in mind while using only the finest materials available. T-Spec RCA cables feature high levels of noise rejection resulting from meticulous build quality using only the finest materials available. All T-Spec RCA cables feature a proprietary ultra-flexible PVC jacket that's so durable it's BC-5W2 marine compliant.

T-Spec has once again chosen to take the high road with a full line of ABOVE SPEC wire that exceed CEA and ANSI specifications for gauge size. Providing greater current capability for your stereo's sensitive electronics, T-Spec AMP kits are designed specifically to be installed into boat and powersport vehicles like ATVs. Each AMP kit provides full CEA spec BC-5W2 Marine compliant cable and circuit breaker protection to eliminate short circuits and will offer easy re-set to get going again. No need to carry miscellaneous fuses in case of a problem.

CABLE & WIRE



4 AWG POWER WIRE

V10PW-475 75 FT | 22.86 M | MATTE PEARL

V10GW-475 75 FT | 22.86 M | MATTE GREY

8 AWG POWER WIRE

V10PW-8125 125 FT | 38.10 M | MATTE PEARL

V10GW-8125 125 FT | 38.10 M | MATTE GREY

16 AWG SPEAKER WIRE

V10SW16250-BK 250 FT | 76.20 M | BLACK

POWER & SPEAKER WIRE

► V10 SERIES SPOOLS

- + Meets CEA and ANSI specification for wire gauge
- + Full virgin copper construction
- + High strand count for maximum flexibility
- + Ultra-flexible PVC blended jacket
- + BC-5W2 marine compliant



Speaker wire



EVERYTHING YOU NEED FOR YOUR INSTALL BAY

The Install Bay® provides a one-stop source for installation professionals with a comprehensive line that includes everything required to achieve even the most technically demanding install. Down to the smallest item, these products incorporate the best available materials and construction for installation ease and years of reliable use.

The Install Bay experience is all about value. Our brand strives to be your means for affordable, professional installations from audio to alarm. With over 1500 individual products, the line offers a comprehensive collection with everything you need for just about any install job.



IBR03 IBR04 IBR05 IBR09

BUTT CONNECTORS

▶ 1 BAG ▶ 24 PIECES

- IBR03 22/18GA | VINYL | RED
- IBR04 16/14GA | VINYL | BLUE
- IBR05 12/10GA | VINYL | YELLOW
- IBR06 22/18GA | NYLON | RED
- IBR07 16/14GA | NYLON | BLUE
- IBR08 12/10GA | NYLON | YELLOW

HEAT SHRINK ASSORTED NYLON

▶ 1 BAG ▶ 12 PIECES

- IBR09 + (4) 22/18GA RED, (4) 16/14GA BLUE, (4) 12/10GA YELLOW



IBR14



IBR10

IBR11

IBR12

QUICK DISCONNECT

▶ 1 BAG ▶ 24 PIECES

- IBR10 22/18GA | FULLY INSULATED NYLON
+ (12) 0.250 RED FEMALE, (12) 0.250 RED MALE
- IBR11 16/14GA | FULLY INSULATED NYLON
+ (12) 0.250 BLUE FEMALE, (12) 0.250 BLUE MALE
- IBR12 12/10GA | FULLY INSULATED NYLON
+ (12) 0.250 YELLOW FEMALE, (12) 0.250 YELLOW MALE
- IBR14 PARTIALLY INSULATED VINYL
+ 22/18GA RED: (4) FEMALE (4) MALE
+ 16/14GA BLUE: (4) FEMALE (4) MALE, 12/10GA YELLOW:
(4) FEMALE (4) MALE

RETAIL PROGRAM



RETAIL PROGRAM



ASSORTED TERMINALS

▶ 1 BAG ▶ 24 PIECES

IBR13 CLOSED END CAP

+ (12) 12/10ga, (12) 16/14ga

IBR15 SPADE | VINYL

+ 22/18GA RED: (4)#8 (4)#10, 16/14GA BLUE: (4)#8 (4)#10, 12/10GA YELLOW: (4)#8 (4)#10

IBR16 RING | VINYL | SMALL#

+ 22/18GA RED: (4)#8 (4)#10, 16/14GA BLUE: (4)#8 (4)#10, 12/10GA YELLOW: (4)#8 (4)#10

IBR17 RING | VINYL | LARGE#

+ 22/18GA RED: (4)5/16" (4)3/8", 16/14GA BLUE: (4)5/16" (4)3/8", 12/10GA YELLOW: (4)5/16" (4)3/8"

IBR18 BULLET VINYL .156

+ 22/18GA RED: (6)FEMALE (6)MALE, 16/14GA BLUE: (6)FEMALE (6)MALE

IBR19 T-TAP

+ (8) 22/18GA RED, (8) 16/14GA BLUE, (8) 12/10GA YELLOW

IBR20 IDC CONNECTORS

+ (8) 22/18GA RED, (8) 16/14GA BLUE, (8) 12/10GA YELLOW

▶ 1 BAG ▶ 8 PIECES

IBR21 RING | VINYL LARGE#

+ 8GA RED: (2)5/16" (2)3/8", 4GA YELLOW: (2)5/16" (2)3/8"

IBR22 RING | COPPER LARGE#

+ 8GA: (2)5/16" (2)3/8", 4GA: (2)5/16" (2)3/8"



IBR24 RCA100 NICKEL PLATED RCA COUPLERS

▶ 1 BAG ▶ 8 PIECES

+ (4) FEMALE TO FEMALE, (4) MALE TO MALE



ASSORTED FUSES

▶ 1 BAG ▶ 24 PIECES

IBR25 ATC | 7.5-40 AMP

+ (4) 7.5A, (4) 10A, (4) 15A, (4) 20A, (4) 30A, (4) 40A

IBR26 ATM | 7.5-40 AMP

+ (4) 7.5A, (4) 10A, (4) 15A, (4) 20A, (4) 30A, (4) 40A

▶ 1 BAG ▶ 12 PIECES

IBR27 AGU | 20-70 AMP

+ (2) 20A, (1) 30A, (2) 40A, (2) 50A, (3) 60A, (2) 70A

▶ 1 BAG ▶ 6 PIECES

IBR45 ATC | 10-30 AMP

+ (2) 10A, (1) 15A, (1) 20A, (2) 30A

IBR46 ATM | 10-20 AMP

+ (2) 10A, (2) 15A, (2) 20A

IBR47 AGU | 60-80 AMP

+ (3) 60A, (3) 80A

IBR55 ATMLP ASSORTMENT

+ (2) 10A, (2) 15A, (2) 20A



IBR30 RELAY & SOCKET

▶ EACH

+ 30A/40A RELAY W/ HARNESS 12" LEADS



IBR31 HOT MELT 10" GLUE STICKS HOT MELT GLUE STICKS

▶ 1 BAG ▶ 8 PIECES

+ (4) BLACK, (4) CLEAR



IBR32 50% SHRINK TUBING HEAT SHRINK TUBING

▶ 1 BAG ▶ 4 PIECES

+ Assorted

+ 4' BLACK

+ (1) 1/8", (1) 1/4", (1) 3/8", (1) 1/2"



IBR33 ASSORTED BLACK CABLE TIES

▶ 1 BAG ▶ 24 PIECES

+ (8) 4", (8) 6", (8) 8"



HAND TOOLS

▶ EACH

IBR34 5" STEEL STRIPPER & CUTTER

IBR35 DELUXE CRIMPING TOOL



CONNECTOR KITS

▶ EACH

IBR23 INSTALL CONNECTOR KIT

+ (20) 16/14GA Crimp caps, (2) 16/14GA #8 RING, (2) 16/14GA BUTTS, (10) 4" Natural Cable Ties

IBR36 COMPLETE INSTALL KIT

+ ((1) crimper/wire cutter, (1) vinyl tape, (4) 16/14GA #8 ring,

+ ((4) 16/14GA BUTTS, (6) 16/14GA crimp caps, (4) 16/14GA #10 spade



IBR40

* Actual colors may vary

PRIMARY WIRE

▶ 1 BAG ▶ 2 PIECES

IBR38 12GA

+ (1) 20' RED, (1) 10' BLACK

▶ 1 BAG ▶ 5 PIECES

IBR40 18GA ASSORTED

+ 10' (1) BLUE, (1) GREEN, (1) PURPLE, (1) WHITE, (1) ORANGE



IBR41

FLEX LOOM TUBING

▶ EACH

IBR41 7' 3/8"

IBR42 7' 1/2"



IBR43

IBR44

3.5 TO 3.5 & 3.5 TO RCA

▶ EACH ▶ 2 METERS

IBR43 3.5MM TO 3.5MM

IBR44 3.5MM TO RCA



IBR49

IBR50

USB CHARGER

▶ EACH

IBR49 MINI USB CAR CHARGER

+ Input: 12V-24V

+ Output: 5V-1000mA, White

+ Size: 50x33x20MM, CE /FCC and ROHS Compliant

▶ EACH

IBR50 DUAL MINI USB CAR CHARGER

+ Input: 12V-24V

+ Output: USB1 5V-1000mA, USB2: 2100mA, White

+ Size: 50x33x20MM, CE /FCC and ROHS Compliant



IBR51

MINI ANL

FUSE HOLDER

▶ EACH

+ 4GA INPUT/OUTPUT, 8GA REDUCERS INCLUDED

IBR56

MINI

VOLTAGE METER

▶ EACH

+ Flush mount with hardware

+ .250" power and ground lugs on back with red LEDs

+ Use with optional mounts IBR59, IBR60 & IBR61



IBR57

DUAL USB CHARGER

▶ EACH

+ OUTPUT: 5V/3.1A (2.1A+1A)

+ Flush mount, water resistant

+ .250" power and ground lugs on back

+ Use with optional mounts IBR59, IBR60 & IBR61

RETAIL PROGRAM



IBR58

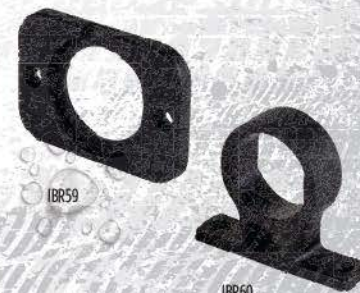
POWER SOCKET

▶ EACH

+ Flush mount, water resistant

+ .250" power and ground lugs on back

+ Use with optional mounts IBR59, IBR60 & IBR61



IBR59

IBR60



IBR61

MOUNTS

▶ EACH

IBR59 PANEL MOUNT

+ For IBR56, IBR57 & IBR58

IBR60 SURFACE MOUNT

+ For IBR56, IBR57 & IBR58

IBR61 UNDERDASH MOUNT

+ For IBR57 & IBR58



IBR66

DUAL USB CHARGING

▶ EACH

+ Toyota style knockout with dust cover

+ 3.1 amp total output

+ Blue LED backlight

+ 12" power/ground leads with 2 pin connector

RETAIL PROGRAM



ATC FUSE HOLDERS

▶ EACH

IBR62

- + 12 gauge wire
- + Waterproof design with mounting tab on cover
- + Great for marine, motorsports, ATV and motorcycle applications

▶ EACH

IBR63

- + Mounting tab, supports up to 80 amp with two 40 amp fuses
- + Supports up to 8ga wire in waterproof connector
- + Can be used in marine, motorsports, ATV and motorcycle applications



BLUETOOTH AUDIO RECEIVERS

▶ EACH

IBR64 WATER RESISTANT DESIGN

- + Remote turn on comes on when streaming media
- + Water resistant
- + Upgrade existing non-Bluetooth® radio
- + Automatically reconnects with the last BT device
- + RCA output

▶ EACH

IBR65 FLUSH MOUNT

- + AUX input
- + Water resistant
- + Remote turn on comes on when streaming media
- + Independent volume and track controls

CONNECTORS + TAPE + WIRE + CIRCUIT BREAKERS



3M ELECTRICAL TAPE

▶ EACH

SUPER33 SUPER 33+ PREMIUM TAPE

- + 3/4" X 52' Vinyl UL and CSA rating. Highly conformable, flame retardant, super stretchy in all weather applications. Resists UV rays, abrasion, corrosion, alkalis and acids.

▶ 10 PACK

SUPER33-10 SUPER 33+ ELECTRICAL TAPE

- + 3/4" X 52' premium grade, vinyl electrical

▶ EACH

1700 ECONOMY VINYL ELECTRICAL TAPE

- + 3/4" X 66', UL and CSA rating, flexible 7 mil.

▶ 10 PACK

1700-10 ECONOMY VINYL ELECTRICAL TAPE

- + 3/4" X 60', UL and CSA rating, flexible 7 mil.



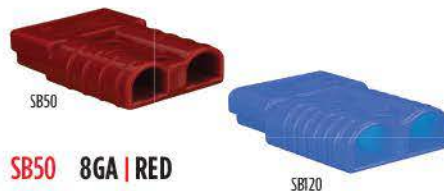
IB51026

EXTERIOR HARNESS TAPE

OEM HARNESSING

▶ 6 PER SLEEVE ▶ 3/8" X 82.5'

- + For wrapping exterior harnesses



SB50 8GA | RED

SB120 4GA | BLUE

SB175 1GA | YELLOW

CONNECTORS

ANDERSON LARGE GAUGE

▶ EACH

- + Genderless housings
- + Low resistance connection
- + Self securing design
- + 2 required to complete connection



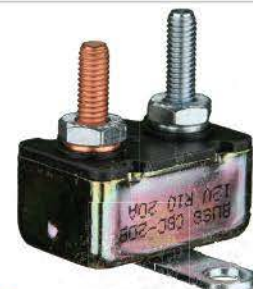
PWBL18500

PWBK18500

US GPT PRIMARY WIRE

▶ EACH | 500FT.

- US16500R 16GA | US GPT RED
- US16500BK 16GA | US GPT BLACK
- US16500BL 16GA | US GPT BLUE
- US16500BR 16GA | US GPT BROWN
- US16500GR 16GA | US GPT GREEN
- US16500GY 16GA | US GPT GREY
- US16500OR 16GA | US GPT ORANGE
- US16500PK 16GA | US GPT PINK
- US16500PL 16GA | US GPT PURPLE
- US16500WT 16GA | US GPT WHITE
- US16500YL 16GA | US GPT YELLOW
- US18500R 18GA | US GPT RED
- US18500BK 16GA | US GPT BLACK
- US18500BL 16GA | US GPT BLUE
- US18500BR 16GA | US GPT BROWN
- US18500GR 16GA | US GPT GREEN
- US18500GY 16GA | US GPT GREY
- US18500OR 16GA | US GPT ORANGE
- US18500PK 16GA | US GPT PINK
- US18500PL 16GA | US GPT PURPLE
- US18500WT 16GA | US GPT WHITE
- US18500YL 16GA | US GPT YELLOW
- US22500R 22GA | US GPT RED
- US22500BK 22GA | US GPT BLACK



CB30AR 30 AMP AUTO RESET

CB40AR 40 AMP AUTO RESET USA

CB50AR 50 AMP AUTO RESET USA

AUTO RESET USA COOPER BUSSMANN

CIRCUIT BREAKER

▶ EACH



NEW! BLR-I-504
NEW SCREW TERMINAL DESIGN!
LED ATC FUSE BLOCK

▶ **4-POSITION**

- + 4-Position Fuse Block with indicating LEDs
- + Screw Terminals
- + For use with regular blade fuses



NEW! BLR-I-506
NEW SCREW TERMINAL DESIGN!
LED ATC FUSE BLOCK

▶ **6-POSITION**

- + 6-Position Fuse Block with indicating LEDs
- + Screw Terminals
- + For use with regular blade fuses



NEW! BLR-I-510
NEW SCREW TERMINAL DESIGN!
LED ATC FUSE BLOCK

▶ **10-POSITION**

- + 10-Position Fuse Block with indicating LEDs
- + Screw Terminals
- + For use with regular blade fuses



NEW!
LATCHING ROUND SWITCH WITH HARNESS 3A IP67
STAINLESS SWITCH

▶ **16MM | 5/8" HOLE**

- IBRSSW16** WHITE
- IBRSSR16** RED
- IBRSSB16** BLUE
- IBRSSG16** GREEN
- IBRSSY16** YELLOW



NEW!
LATCHING ROUND SWITCH WITH HARNESS 3A IP67
STAINLESS SWITCH

▶ **19MM | 3/4" HOLE**

- IBRSSW19** WHITE
- IBRSSR19** RED
- IBRSSB19** BLUE
- IBRSSG19** GREEN
- IBRSSY19** YELLOW



NEW!
LATCHING ROUND SWITCH WITH HARNESS 3A IP67
BLACK SWITCH

▶ **16MM | 5/8" HOLE**

- IBRBSW16** WHITE
- IBRBSR16** RED
- IBRBSB16** BLUE
- IBRBSG16** GREEN
- IBRBSY16** YELLOW



NEW!
LATCHING ROUND SWITCH WITH HARNESS 3A IP67
BLACK SWITCH

▶ **19MM | 3/4" HOLE**

- IBRBSW19** WHITE
- IBRBSR19** RED
- IBRBSB19** BLUE
- IBRBSG19** GREEN
- IBRBSY19** YELLOW

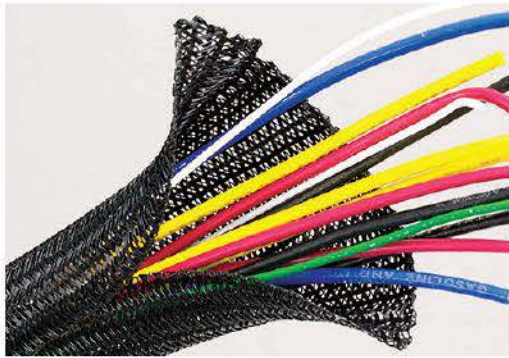
NEED 21MM MOUNTING HOLES
ROUND ROCKER SWITCHES

▶ **EACH**

- IBRRS** NO LEADS | ON/OFF | 13 AMP
- IBRRSR** RED LED | NO LEADS | ON/OFF | 20 AMP
- IBRRSB** BLUE LED | NO LEADS | ON/OFF | 20 AMP
- IBRRSG** GREEN LED | NO LEADS | ON/OFF | 20 AMP
- IBRRSO** ORANGE LED | NO LEADS | ON/OFF | 20 AMP
- IBRRSP** PURPLE LED | NO LEADS | ON/OFF | 20 AMP
- IBRRSM** MINI OFF/ON PREWIRED 15MM MOUNTING HOLE | 13 AMP
- IBRRMOM** MOMENTARY - ON - MOMENTARY
- IBRRMOML** MOMENTARY UP LATCHED DOWN



SLEEVING + TUBING



F6N150BK 1 1/2"

F6N200BK 2"

EXPANDS UP TO 150%

SPLIT BRAID SLEEVING

▶ 25 FT. ▶ SELF-WRAPPING ▶ BLACK

Unique split, semi-rigid braided construction makes it the ideal solution for situations where ease of installation is of primary importance. The lateral split allows the tube to open up to accommodate a wide variety of bundling requirements, while the semi-rigid braid configuration simply closes around the entire installation without the need for any additional fasteners (Velcro®, tape, etc.). The 10 mil PET braid is lightweight, quiet and flexible. The 25% edge overlap (at nominal diameter) allows for coverage around in-line plugs, connectors and splices. It will bend to a tight radius without distorting or splitting open, and unlike full rigid tubing, will not impair or affect the flexibility of harnesses. F6 allows for addition or removal of wires without disassembly.



VT250
NON SHRINKABLE
PVC TUBING

▶ 200FT. PER ROLL

+ 1/4" Roll



EXPANDS UP TO 150%

EXPANDABLE SLEEVING

▶ EACH

FLX125BLK 1 1/4" | BLACK | 50FT

FLX12BLK 1/2" | BLACK | 100FT

FLX12CLR 1/2" | CLEAR | 100FT

FLX12RD 1/2" | RED | 100FT

FLX12BL 1/2" | BLUE | 100FT

FLX12GN 1/2" | GREEN | 100FT

FLX1BLK 1" | BLACK | 65FT

FLX1RD 1" | RED | 65FT

FLX1BL 1" | BLUE | 65FT

FLX1GN 1" | GREEN | 65FT

The FLEXO® Original braided from 10 mil polyethylene terephthalate (PET) monofilament yarns. The material has a wide operating temperature range, is resistant to chemical degradation, UV radiation and abrasion. Used in electronics, automotive, marine and industrial wire harnessing applications where cost efficiency and durability are critical. The unique braided construction and wide expandability allows quick and easy installation over large connectors and long runs.

+ Resists gasoline, engine chemicals and cleaning solvents

+ Cut and abrasion resistant

+ FMVSS 302 approval



SLTI

POLYETHYLENE

SPLIT LOOM TUBING

▶ BLACK

SLT18 1/8" | 100 FT/COIL

+ .125" (3.175mm) ID

SLT14 1/4" | 100 FT/COIL

+ .256" (6.5mm) ID • .373" (9.47MM) OD

SLT145 1/4" DISPENSER BOX | 500 FT/BOX

+ .256" (6.5mm) ID • .373" (9.47MM) OD

SLT38 3/8" | 100 FT/COIL

+ .368" (9.35mm) ID • .494" (12.56MM) OD

SLT385 3/8" DISPENSER BOX | 500 FT/BOX

+ .368" (9.35mm) ID • .494" (12.56MM) OD

SLT12 1/2" | 100 FT/COIL

+ .471" (11.97mm) ID • .645" (16.39MM) OD

SLT122 1/2" DISPENSER BOX 200 | FT/BOX

+ .471" (11.97mm) ID • .645" (16.39MM) OD

SLT58 5/8" | 100 FT/COIL

+ .595" (15.11mm) ID • .732" (18.59MM) OD

SLT34 3/4" | 100 FT/COIL

+ .747" (17.96mm) ID • .909" (24.13MM) OD

SLTI 1" DISPENSER BOX | 100 FT/BOX

+ .897" (22.78mm) ID • 1.077" (27.36MM) OD



IBHST160C



IBHST160B

HEAT SHRINK TUBING KITS

+ Typical applications include strain relief of wire connectors

+ Identifiers or color codes wire and terminals

+ Electrically insulates components, terminals and wire splices

+ Resistant to common fluids and solvents

+ Shrink temperature rating of 90°C (194°F)

+ UL, cUL and RoHS compliant

POLYOLEFIN 50% SHRINK

▶ 160 ASSORTED SIZES

IBHST160C ASSORTED COLORS

IBHST160B BLACK

POLYOLEFIN 33% SHRINK

▶ 62 ASSORTED SIZES

IBHST62AB BLACK | ADHESIVE LINER



3MHSKIT
POLYOLEFIN 50% SHRINK
HEAT SHRINK TUBING KIT

▶ **3M** ▶ **102 TOTAL PIECES**
+ 6" Long
+ 3/16", 1/4", 3/8", 1/2", 3/4", 1"



POLYOLEFIN 50% SHRINK
HEAT SHRINK REFILLS

▶ **3M** ▶ **10 PACK** ▶ **6 INCHES**
3MHS316 3/16" **3MHS12** 1/2"
3MHS14 1/4" **3MHS34** 3/4"
3MHS38 3/8" **3MHS1** 1"



POLYOLEFIN 50% SHRINK
HEAT SHRINK TUBING

▶ **3M** ▶ **BLACK** ▶ **4 FOOT**
3MHST18 1/8"
3MHST316 3/16"
3MHST14 1/4"
3MHST38 3/8"
3MHST12 1/2"
3MHST34 3/4"
3MHST1 1"

▶ **3M** ▶ **BLACK** ▶ **100 FOOT ROLL**
3MHST332-1 3/32"
3MHST18-1 1/8"
3MHST316-1 3/16"
3MHST14-1 1/4"
3MHST38-1 3/8"
3MHST12-1 1/2"
▶ **3M** ▶ **BLACK** ▶ **50 FOOT ROLL**
3MHST34-1 3/4"
3MHST1-1 1"

TUBING + GROMMETS + TUBING + TIES + FASTENERS + TOOLS



LONG BARREL GROMMETS

▶ **25 BAG**
LSB8 8GA | OD .64" | ID .26" | H .54"
LSB4 4GA | OD .85" | ID .40" | H .65"
LSB1 1/0GA | OD 1.0" | ID .63" | H .85"



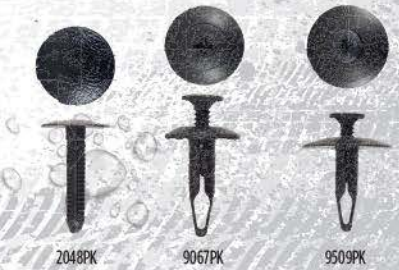
RUBBER GROMMETS

▶ **100 BAG**
RG18 ID 1/8" | OD 5/16"
RG316 ID 3/16" | OD 9/16"
RG14 ID 1/4" | OD 7/16"
RG516 ID 5/16" | OD 9/16"
RG38 ID 3/8" | OD 5/8"
RG12 ID 1/2" | OD 3/4"



BLACK CABLE TIES

▶ **BLACK** ▶ **100 BAG**
BCT4 4" | 18 LB.
BCT6 6" | 30 LB.
BCT7 7" | 50 LB.
BCT8 8" | 40 LB.
BCT8S 8" | 18 LB. | THIN BLACK
BCT11 11" | 50 LB.
BCT14 14" | 50 LB.
BCT14HD 14" | 120 LB. | HD BLACK
▶ **BLACK** ▶ **1000 BAG**
BCT4-1 4" | 18 LB.
BCT6-1 6" | 30 LB.
BCT8-1 8" | 40 LB.



PANEL FASTENERS

▶ **ASSORTED**
12389PK GM MOULDING FASTENER | 25/PK
HA90-CRY CHRYSLER | 10/BAG
HA90-GMFD GM/FORD | 10/BAG
IBWC WINDOW CRANK CLIPS | 10/BAG
10469PK GM FRONT END RETAINERS
11/32" | 25/BAG
11125PK HONDA LIFTGATE RETAINERS
8.5MM | 15/BAG
2048PK FORD INTERIOR TRIM RETAINERS
9/32" | 25/BAG
9067PK RADIATOR SHROUD BLIND RIVETS
1/4" | 25/BAG
9509PK FORD INTERIOR TRIM RETAINERS
1/4" | 50/BAG



ORT3KITXNGL
BOJO™ HAND TOOLS

▶ **3 PIECES**
+ O-ring tool kit

