

**THE CHOICE OF
PROFESSIONALS**

Longacre®

Racing Products



2021 MASTER CATALOG

CONTENTS

2021 LONGACRE® CATALOG

4 FEATURED PRODUCTS

6 SCALES & ACCESSORIES

- 6 Computerscales®
- 9 Computerscales®: DX3™ & DX2™
- 10 Computerscales®: Karting
- 11 Computerscales®: AccuSet II™
- 12 Computerscales®: Dual Load Cell
- 13 Scale Storage
- 14 SideSliders
- 16 Billet Levelers
- 18 Platen Setup & Turnplates
- 20 Load Rating Machines
- 22 Coil Spring Tester
- 24 Chassis Height Measurement

25 CHASSIS SETUP EQUIPMENT

- 25 Caster/Camber Digital Gauges
- 26 Caster/Camber Digital Gauge Adapters
- 27 Caster/Camber Billet Gauges
- 29 Toe-In Plates & Accessories
- 31 Bump Steer Gauges & Accessories
- 32 Stagger Gauges

33 TIRE MANAGEMENT

- 33 Tire Pressure Gauges Quick Guide
- 34 Tire Pressure Gauges: Digital
- 37 Tire Pressure Gauges: Pro & Magnum™
- 38 Tire Pressure Gauges: Liquid & Deluxe
- 39 Tire Pressure Gauges: Basic & Quick Fill
- 40 TIRELIEFS™ & Accessories
- 41 Durometers
- 42 Pyrometers
- 44 Air Tanks & Accessories

45 GAUGES, TACHS, PANELS, & ELECTRICAL

- 46 Digital Elite Waterproof Gauges
- 47 Digital Elite Waterproof Gauges Panels
- 48 SMI™ Elite Waterproof Gauges
- 49 SMI™ Elite Waterproof Gauges Panels
- 50 Tachs & Tach Panels
- 53 Sportsman™ Gauges & Panels
- 55 Switches & Switch Panels

60 SPECIALTY TOOLS

- 60 Air Density Gauge
- 61 Leak Down Testers & Shock Inflators
- 62 Digital Levels
- 63 Extra Tools

64 STEERING WHEELS

- 64 Aluminum Wheels
- 66 Steering Accessories

67 MISCELLANEOUS

- 67 Timers & Stopwatches
- 68 Padding
- 70 Helmet Hooks, Brackets, Radio Box, Drink Holder
- 71 Mirrors & Accessories
- 72 Brake Lines & Accessories
- 73 Carb Linkage Kits & Accessories
- 74 Remote Starter Button, Spark Plug Viewer, & Accessories
- 75 Spoiler & Fender Accessories
- 76 Insulation
- 77 Car Covers & Hard Cases
- 78 Apparel

FEATURED PRODUCTS

Longacre Digital Elite Waterproof Gauges



SMi Elite Waterproof Gauges



LONGACRE **WATERPROOF** **GAUGES**

THE NEXT GENERATION IN INSTRUMENTATION HAS ARRIVED!

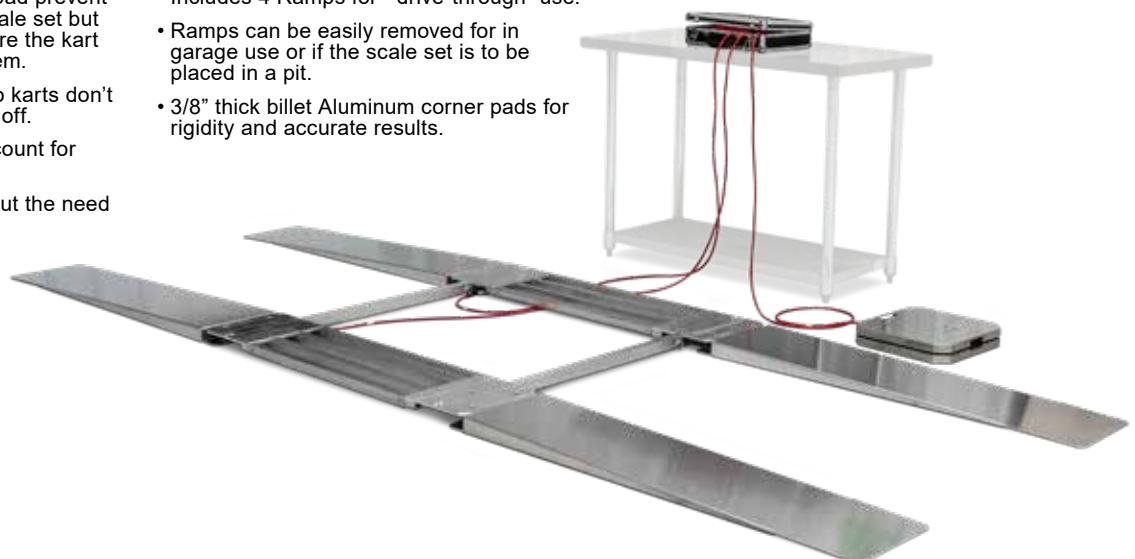
Longacre Racing Products is proud to introduce the all-new Digital Elite Waterproof Gauges and SMi™ Elite Waterproof Gauges. Engineered for wet and dirty environments, these gauges provide the absolute best in waterproof sealing. These elite gauges provide the most precise measurements on the market with unmatched resistance to vibration, heat, and moisture.

See p.45

ADJUSTABLE KART SCALE PLATEN AND DRIVER SCALE

- Wheel stops on the front left pad prevent the kart from rolling off the scale set but are low profile enough to where the kart can easily be pushed over them.
- Low profile and long ramps so karts don't bottom out when rolling on or off.
- Adjustable leveling feet to account for slightly unlevel surface.
- Breaks down easily and without the need for tools.
- Includes 4 Ramps for "drive-through" use.
- Ramps can be easily removed for in garage use or if the scale set is to be placed in a pit.
- 3/8" thick billet Aluminum corner pads for rigidity and accurate results.

See p.10



FEATURED PRODUCTS

COMPUTERSCALES®

dx3™ & dx2™

PRO WIRED HYBRID™ MODEL

10" TABLET

- High resolution 7.75" x 5.75" backlit color display.
- Easily customizable.
- Note-taking and 50 set named memory stores weights and percentages.
- Includes high contrast display for bright sunlight.

SEMI PRO WIRED HYBRID™ MODEL

7" TABLET

- High resolution 6" x 3.75" backlit color display.
- Easily customizable.
- Note-taking and 10 set named memory stores weights and percentages.



See p.9

RATCHETING SUSPENSION LOAD PULL STICKS

This ratcheting load stick bolts in at the car's shock location. The stick allows you to change springs with ease and accuracy, along with being able to pull the race car down to a dynamic attitude to find a suspension bind and to use on jack stands to adjust your compressed loads.

See p.21



ACCURATE SETUPS

NOW MADE REALLY EASY



WIRELESS CONVENIENCE.



- The cables are gone, nothing to trip over.
- Easily converts to metric.
- Display just the information you want, nothing you don't.
- Satin finished scale pads.
- Easy to upgrade.
- Download the latest app free and keep your system state-of-the-art.
- New app with Notes Screen shown together with weights and partials, side-by-side. See everything at the same time. (On 10" tablet only.)

Everything you need is included:

Complete systems include a tablet (7" or 10") with a hard case, stylus, universal charger, and USB cable, and 4-15" or 12" pads with wireless modules built in.

COMPUTERSCALES® XLI TABLET XLI™ SINGLE LOAD CELL

DESCRIPTION	PART #
Computerscales® Wireless 7" Tablet	52-72715
Computerscales® Wireless 10" Tablet	52-72717
Computerscales® Wireless Without Tablet	52-72718

COMPUTERSCALES® XLI TABLET XLI™ DUAL LOAD CELL

DESCRIPTION	PART #
Computerscales® Wireless 7" Tablet	52-72726
Computerscales® Wireless 10" Tablet	52-72728
Computerscales® Wireless Without Tablet	52-72729

COMPUTERSCALES® XLI TABLET XLI™ 12" PADS

DESCRIPTION	PART #
Computerscales® Wireless 7" Tablet 1100lbs./Pad	52-72691
Computerscales® Wireless 7" Tablet, 400lbs./Pad	52-72630

*Kart, Quarter Midget, Legends, Bandeleros, etc.



10" Tablet



7" Tablet



Shown with Billet Levelers and Turnplate Roll-offs available separately.

TABLET SCALE FEATURES



CURRENT WEIGHTS MEMORY WEIGHTS

Shown at the same time for easy comparison. Makes hitting your target setup simple and hassle free.

Exclusive Tablet Scale Features

- An easy-to-use "Setup Page" lets you customize the partial percentage display if you wish. Change to metric readout here if needed.
- Battery condition for pads and tablet is shown on the display.
- Special high contrast screen for very bright sunlight conditions.
- 7" Tablet and smartphone automatically work in both horizontal ('landscape') and vertical ('portrait') orientation.
- Charger for tablet is included. Pads use replaceable AA Alkaline batteries.

For the car icon on the display you can select any of the below car options.



Stock Car



Modified



Indy/F1



Kart



Customize With Your Car

You can even have a picture of YOUR car as the icon to personalize your system. Call for details.

CAR ICON AND ALL WEIGHTS CAN BE ROTATED ON THE DISPLAY.

Easy viewing from any position around the car. Just tap the button above the car. Wheel weights 'follow' rotation.

Best when standing behind the car.



Best when standing on the right side of the car.



Best when standing on the left side of the car.



Best when standing in front of the car.



DURABILITY

Tablets come with a hard carrying case for the best protection.

COMPARE OUR PADS TO OTHERS

Other 'billet' pads



.5" Thick flat plate



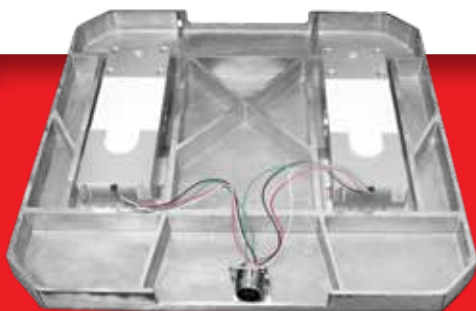
Longacre® pads



1.1" Tall reinforcing ribs



Our pads use elaborate computer-designed reinforcing ribs to add rigidity that's not available with simple flat plate style 'billet' pads. The more rigid your pads are, the lower the deflection and the more accurate your setup.



FOR THE LOWEST DEFLECTION

Longacre® Dual Load Cell pads give you the lowest deflection. The design allows the dispersal of stress over a much larger area of the pad to minimize platform deflection. You get the least deflection and the most accurate and consistent setups possible. Best for scaling cars with high camber.

SCALE SYSTEM APP

Note-taking right on the tablet, linked to the memory number. Keep a permanent record of the changes you've made and the results you got. Type notes with the on-screen keyboard or take them by voice. You can add, edit, or delete as needed. Virtually unlimited space is available. This app can be downloaded to your current tablet scales at no cost. Just go to our website or the Google Play™ Store. Google Play™ is a trademark of Google Inc.

2 BACKGROUND GRAPHICS 'SKINS'

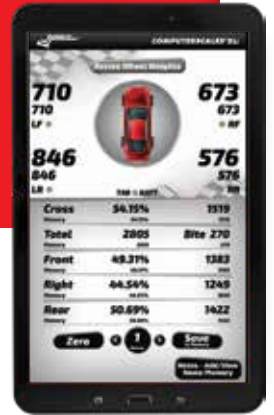
- Customize your app background with different skins. Pick the one you prefer, they are easily switched.
- Weights and numbers are crisp and easy to read.
- There's a "High Contrast Display" for very bright sunlight. It makes the display very readable outdoors.



Standard Red Skin



Industrial Black Skin



Bright Sunlight Skin



NOTE-TAKING SCREEN



10" Tablet with Side-By-Side Notes

- Note-taking right on the tablet, tied to the Memory number.
- Show notes on the screen with the current wheel weights and percentages. See everything at the same time.
- Store race notes and chassis setup data (caster/camber, spring rates, tire pressures, etc.)
- Store your pre-race check list. Check the jobs off as they're done. Don't miss anything.
- Easily build a customized template for all the info you need, just fill in the blanks.
- Keep a permanent record of the changes made and the results.
- Type notes with on-screen keyboard or by voice.
- Add to, edit, or delete as needed. Recall anytime.
- Virtually unlimited space available. Scroll as needed.
- Download to a PC or e-mail.

PRO dx3™ WIRED HYBRID™ MODEL

Comes with hard case for tablet and cables.



- Use just like traditional wired scales or you can remove the controller tablet and use it wirelessly.
- Large high resolution 7.75" x 5.75" backlit color display. All of the features of our fully wireless tablet scales in a hybrid wired/ wireless system.
- A separate circuit board powers the load cells, connected by our Hi-Flex Polysilicone cables. The controller tablet mounts on top and is easily disconnected to become a semi-wireless system if you wish. Leave the controller in the case or remove it and place it where it's convenient. The case can be tucked under the car to keep it out of your way.
- Satin finished scale pads.
- Easily converts to metric.

7.75" x 5.75" DISPLAY



10" TABLET

"High Contrast Display" for bright sunlight. Switch back and forth easily.

Download weights to a PC or e-mail.

DESCRIPTION	PART #
Computerscales® Hybrid DX3™	52-72617
Computerscales® Hybrid DX3™ Dual Load Cell	52-72653

SEMI PRO dx2™ WIRED HYBRID™ MODEL

Comes with hard case for tablet and cables.



- Tablet shows all wheel weights and all partial percentages. Can be easily customized to your preference. Show just what you want, nothing you don't.
- 10 Set memory stores weights and percentages, shows on the display at the same time as current weights for quick comparison.
- A handy note-taking feature lets you keep notes right on the tablet screen. Memory slots can be used for scaling notes or named to organize complete setup specs: caster/camber, stagger, toe-in, tire pressures, shocks, etc. Notes may be entered by typing or voice command and recalled at any time for reference.
- Wheel weights and percentages can be rotated on the display to make viewing from anywhere around the car easier.
- Controller tablet has rechargeable battery (charger included). Pad board runs 100+ hours on replaceable alkaline batteries. Low battery indication for both.
- Easily converts to metric.

6" x 3.75" DISPLAY



7" TABLET

DESCRIPTION	PART #
Computerscales® Hybrid DX2™	52-72613
Computerscales® Hybrid DX2™ Without Tablet	52-72615

SCALES FOR KARTING



12"x12" PADS

COMPUTERSCALES® XLI WIRELESS SCALES

Everything you need is included: Complete systems include a 7" tablet with stylus, hard carrying case, universal charger and USB cable, and 4–12"x12" pads with wireless modules built in. Easily converts to metric.

DESCRIPTION	PART #
Computerscales® with 7" Tablet XLi™ Karting 400 lbs	52-72630
Computerscales® with 7" Tablet XLi™ 1100 lb 12" Pads	52-72691



12"x12" PADS

COMPUTERSCALES® WIRED SCALES AccuSet II™

- 4 Line display shows all 4 wheels and all partial percentages.
- CNC machined dead flat low deflection pads for the best accuracy, 400 lbs. capacity.
- Easy to use.
- 1/10 Percent accuracy.
- 2 Year limited warranty.
- Easily converts to metric.
- Hard carrying case and red polysilicone cables.

DESCRIPTION	PART #
Computerscales® AccuSet II™ Karting	52-72624



NEW! ADJUSTABLE KART SCALE PLATEN AND DRIVER SCALE

- Wheel stops on the front left pad prevent the kart from rolling off the scale set but are low profile enough to allow the kart to be easily pushed over them.
- Includes low profile and long ramps so karts don't bottom out when rolling on or off.
- Adjustable leveling feet to account for slightly unlevel surface.
- Breaks down easily and without the need for tools.
- Includes 4 ramps for "drive-through" use.
- Ramps can be easily removed for in-garage use or if the scale set is to be placed in a pit.
- 3/8" thick billet Aluminum corner pads for rigidity and accurate results.

DESCRIPTION	PART #
Adjustable Kart Scale Platen Pass Through Fixture 12"	52-72965
Kart Setup Fixture - 12" CNC Kart Pads	52-72961
Kart Setup Fixture - 15" CNC Kart Pads	52-72962



Separate Pad For Driver means no more trying to balance on the scale set with a kart that wants to roll around.

COMPUTERSCALES® *AccuSet II™*

COMPUTERSCALES®

AccuSet II™ 1500 lb/PAD

Store your baseline setup in memory. Then recall it instantly to compare to the current setup. Saves time writing it down – always handy. This 1 slot memory is really helpful and is super easy to use.

- Shows all 4 wheel weights plus cross weight.
- Push one button for all partial percentages and weights.
- Slanted for easier viewing.
- Includes deluxe hard carrying case for electronics and cables.
- Low profile pads with satin finish, flat to within .01" for accurate setups.
- 15" x 15" x 2.5", 1500 lbs/pad capacity.
- Easily converts to metric.
- 2 Year limited warranty.



NEW - Baseline Memory Recall

DESCRIPTION	PART #
Computerscales® AccuSet II™ 1500 lb/Pad	52-72593

COMPUTERSCALES®

AccuSet II™ 1100 lb/PAD

- Display shows all 4 wheel weights plus all percentages.
- 12" x 12" x 1100 lbs. capacity powder coated pads.
- Great for IMCA cars, Legends, Dwarf, Mini Cup, Bandeleros, Road Racing Formula classes, Quads, etc.
- Easily converts to metric.



DESCRIPTION	PART #
Computerscales® AccuSet II™ 1100 lb/Pad	52-72582

COMPARE OUR PADS TO OTHERS.

Other 'billet' pads



.5" Thick flat plate



Longacre® pads



1.1" Tall reinforcing ribs



Our pads use elaborate computer-designed reinforcing ribs to add rigidity that's not available with simple flat plate style 'billet' pads. The more rigid your pad is the more accurate your setup.

ALL PARTIAL PERCENTAGES. ▶



PUSH ONE BUTTON TO GET EITHER DISPLAY INSTANTLY.

4 WHEEL WEIGHTS PLUS CROSS. ▶



HIGHER CAPACITY PULL DOWN RIG SYSTEMS



COMPUTERSCALES® WIRELESS

10" TABLET XLi™ 3000 lbs DUAL LOAD CELL

- Wireless 10" tablet included.
- Satin finished scale pads.
- Shows 4 individual wheel weights plus all partial percentages.
- App available to use Android™ phone as controller.
- 3,000 lbs / Pad.
- 15" x 15" x 2.5" Pads.
- Easily converts to metric.

DESCRIPTION	PART #
Computerscales® Wireless 10" Tablet XLi™ Dual Load Cell, 3,000 lbs / Pad	52-72675
Computerscales® Hybrid DX2™, No Tablet	52-72615



COMPUTERSCALES® WIRED

- 15" x 15" x 4" (5" on #52-72668) tall HD pads.
- AA Battery powered.
- Control box shows 4 individual wheel weights plus all partial percentages.
- Extra long 24' HD Hi-Flex cables with lock ring connectors.
- Easily converts to metric.



DESCRIPTION	PART #
Computerscales® Wired System, w/ 4"T x 3500 lb. Powder Coated Pads	52-72663
Computerscales® Wired System, w/ 5"T x 5000 lb. Pads	52-72668

STORAGE BOXES FOR 15" & 12" LOW PROFILE PADS

- Padded lining keeps pads protected.
- Heavy duty aluminum frame with scuff-resistant sides.
- Could also be used for radios or other equipment.

DESCRIPTION	PART #
15" Scale Pads Storage Box	52-72292
12" Scale Pads Storage Box	52-72280



GAS CAN SCALE

- Reads to 1/10 lb., 350 lbs. capacity.
- Weigh gas can during a pit stop to determine fuel used.
- 12" x 12" Platform.

DESCRIPTION	PART #
Gas Can Scale	52-72330



NEW! STORAGE CART FOR CHASSIS SCALES

- This handy cart not only stores your scales but also makes moving them around a snap!
- Heavy duty steel and aluminum construction is made to last.
- Accepts 15" x 15" scale pads up to 2.5" thick.
- Upper storage area with hinged top to store your scale display and cables.
- Powder coated red for a durable long lasting finish.
- Some assembly required.

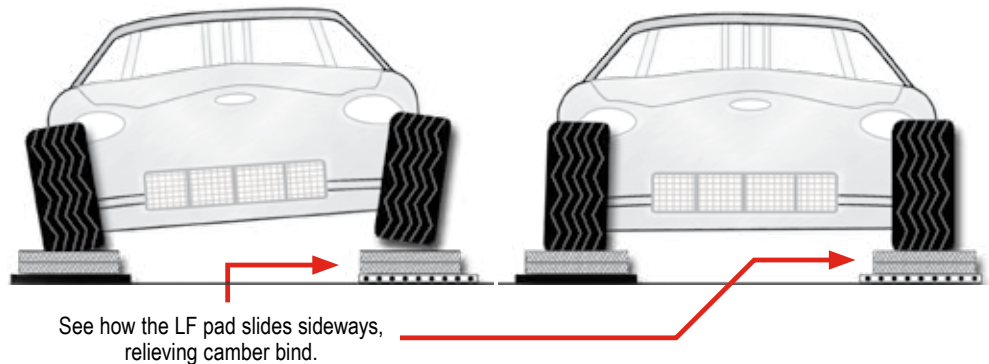
DESCRIPTION	PART #
Storage Cart For Chassis Scales	52-72304



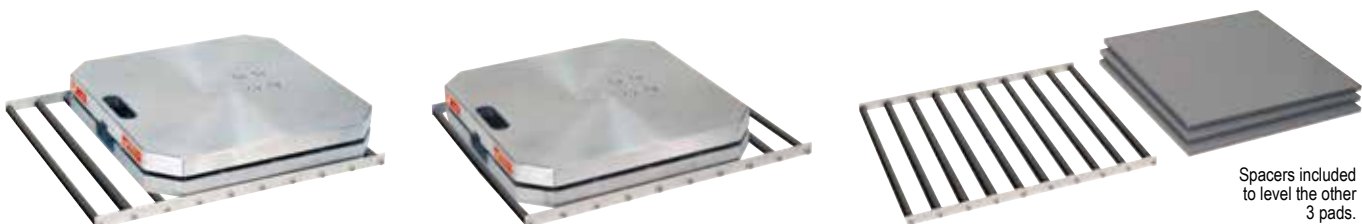
SIDESLIDER FOR BIND-FREE SETUPS

CHASSIS ROLLER SLIP PLATE

You use ball bearing A frame pivots, low friction ball joints, greaseable Heim joints, and even ceramic bearings all to eliminate suspension friction. Don't set up your car with even a small bind at the scale pads.



ECONOMY SIDESLIDER



When you lift your car to put it on scales the front wheels camber in at the bottom. As you let it down the wheels must be allowed to freely camber back out or there will be a small residual bind in the chassis. This will make your wheel weights (and your setups) less than perfect. To avoid this, the front wheels must be able to easily move sideways. With SideSliders your front wheels can move sideways effortlessly to relieve any camber-induced bind. This will assure you the most accurate, consistent setups possible.

- Rollers are made from a tough, low friction polymer.
- Install under Left Front wheel (it has the most camber change.)
- 3 Spacers are included to re-level your setup.
- Use on any smooth floor surface.

DESCRIPTION	PART #
Economy SideSlider Single with 3 Spacers	52-72870
Economy SideSlider Set with 2 Spacers	52-72872

"3D" BALL ROLLER SIDESLIDERS

- Install under both front wheels.
- Must be used under scale pads.
- Supported on ball bearings made from a low friction polymer.
- 2 Spacers are included to re-level your setup.
- Use on any smooth floor surface.

These SideSliders move in 3 directions: sideways, front and back, and they rotate. They are great for checking wheel weights with wheels turned. See what happens to your wheel weights with different caster settings.



DESCRIPTION	PART #
"3D" Ball Roller SideSliders 2 Plates and 2 Spacers	52-72875

BILLET ALUMINUM MODULAR SETUP PLATEN

BEST RIGIDITY FOR ACCURATE SETUPS



ASSEMBLES IN 15 MINUTES OR LESS AND DISASSEMBLES EVEN QUICKER.

**EASY TO ASSEMBLE.
EASY TO TRANSPORT.**

The entire Platen is leveled, not just the scale pads as with hi-density foam racks. Modular components assemble quickly, then break down for efficient transportation.

- Four Billet Scale Pad Levelers with pop-out feet (24 total.)
- Two adjustable spanners.
- Two ramps.
- Two horizontal locator bars.
- Billet T6 aluminum scale pad levelers with a full floor for the best rigidity and the most accurate setups.
- Swivel adjusting feet pop out for quick and easy storage.
- Spanners are attached to levelers and are flush with the top of scale pad.
- For 15" x 15" x 2.5" scale pads, wired or wireless.
- Fully adjustable for wheelbase (90" – 110") and track width.

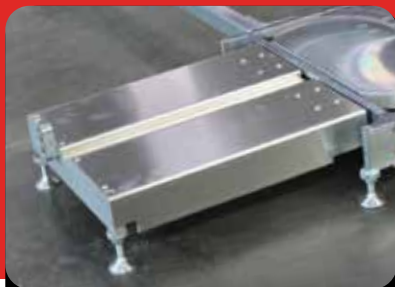


◀ **OPTIONAL VERSION:** **SideSliders** allow the pads to float effortlessly sideways to relieve any chassis bind caused by camber change. Great for IRS cars.

DESCRIPTION	PART #
Adjustable Scale Platen Setup Fixture with Billet Pad Levelers	52-72860
Adjustable Scale Platen Setup Fixture with 2 SideSliders	52-72865
Adjustable Scale Platen Setup Fixture with 1 SideSlider	52-72862
Adjustable Kart Scale Platen Pass Thru Fixture 12"	52-72965
Modular Ramps Only for Adjustable Platen	52-72869



OPTIONAL TURNPLATE ROLL-OFF



OPTIONAL FRONT ROLL-OFF

This new setup platen uses the best design, engineering, and fabrication. The billet aluminum scale pad levelers are rigid for accurate setups and the formed spanners and ramps are strong, yet lightweight. Just set up the billet levelers and clip on the spanners and ramps.

Set caster and camber right on the platen. These attach quickly and easily to the front levelers and come with pop-out adjusting feet.

**ADD TO YOUR
PLATEN'S FUNCTIONALITY
WITH THESE SPECIAL
PURPOSE ROLL-OFFS.**

DESCRIPTION	PART #
Modular Roll-off Platforms for Turnplates - Set of 2	52-72856
Aluminum Turn Plates (Pair)	52-79800
Modular 18" Roll-offs only - Set of 2	52-72851
Modular 30" Roll-offs only - Set of 2	52-72853

BILLET LEVELERS

MODULAR SCALE PAD LEVELING FIXTURES

BILLET SCALE PAD LEVELERS FOR 2.5" PADS

- CNC machined T6 aluminum.
- Leveling feet “pop in and out” for easy setup and storage. They’re held in place with “Rare Earth” magnets.
- Full floor for best pad support and rigidity.

DESCRIPTION	PART #
Levelers for 2.5" Pads (Set of 4)	52-72840



MODULAR DESIGN GIVES YOU ADDED FLEXIBILITY.



+



=



BILLET LEVELER

OPTIONAL ROLL-OFF ATTACHES EASILY

MODULAR ROLL-OFF ASSEMBLY

MODULAR 18" ROLL-OFFS SET OF 4

- With pop-out feet.
- Shown with Billet Levelers (not included.)
- Attach easily.

DESCRIPTION	PART #
Modular 18" Roll-Offs (Set of 4)	52-72850



BILLET SCALE PAD LEVELERS WITH BUILT-IN SIDESLIDERS

- To relieve camber-induced chassis bind for the most accurate setups.
- Same specs as above, including pop-out feet.

DESCRIPTION	PART #
Billet Scale Pad Levelers 2 Built-in SideSliders for 2-1/2" Pads (Set of 4)	52-72844
Billet Scale Pad Levelers 1 Built-in SideSlider for 2-1/2" Pads (Set of 4)	52-72842

(For cars with independent rear suspension.)



LEVELING ACCESSORIES

FOR NEW STYLE SCALE PAD



Pop-out feet stored in sturdy case. 4 Adjuster tools included.

1 PIECE BILLET ROLL-OFF LEVELER FOR 2.5" PADS - SET OF 4

- Full floor for best pad support.
- CNC machined for accurate setups.
- Includes 2 sets of wheel stops.
- Use with wired or wireless scales.
- Includes 24 pop-out feet, 6 per leveler, for best support.

DESCRIPTION	PART #
Set of 4 with 18" Roll-Off Area	52-72831
Set of 4 with 2 SideSliders	52-72845
Set of 4 with 1 SideSlider	52-72843



FULL FLOOR FOR BEST PAD SUPPORT.



SHOWN WITH TURNPLATE ROLL-OFF.

MODULAR ROLL-OFF PLATFORMS FOR TURNPLATES

Most other roll-off fixtures only have 12" to 14" of roll-off area. Sometimes that's not quite enough. If you start with low tire pressures, the "contact patch" can be long. Set your caster and camber right on the fixture. Roll-offs for turnplates attach to front of levelers. Includes 2 pop-out leveling feet for convenient storage. (Billet pad levelers not included.)

DESCRIPTION	PART #
Modular Roll-Off Platforms For Turnplates (Set of 2)	52-72856



Turnplate roll-off platform (front) shown with billet leveler and turnplates. (Turnplates not included.)

BILLET SCALE PAD LEVELERS AND 18" ROLL-OFFS - SET OF 4

DESCRIPTION	PART #
Billet Scale Pad Levelers & 18" Roll-Offs (Set of 4)	52-72830
Modular 18" Roll-Offs Only (Set of 2)	52-72851
Modular 30" Roll-Offs Only (Set of 2)	52-72853



Shown with Modular Billet leveler. Works with 1 piece Billet leveler or Modular leveler. Roll-offs for turnplates – attach to front of levelers – includes 2 pop-out leveling feet for convenient storage.



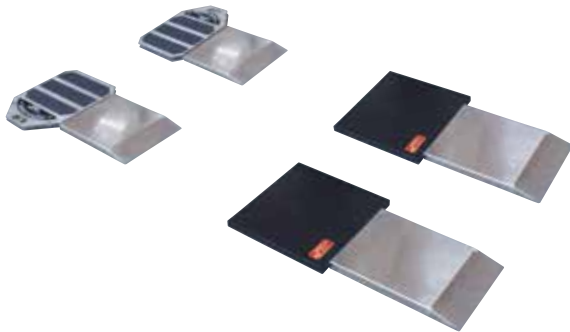


ALUMINUM TURN PLATES

- Low profile – only 1" tall.
- Reads to 0.5° – Indicator can be zeroed with the car on.
- Free floating in 2 directions eliminates bind.
- Can be used on top of scale pads.

DESCRIPTION	PART #
Aluminum Turn Plates (Pair)	52-79800
Single Aluminum Turnplate with Spacer	52-79805
Turn Plate Spacers with Slip Plates (Pair)*	52-79751

*To level rear of car when using turnplates on ground.

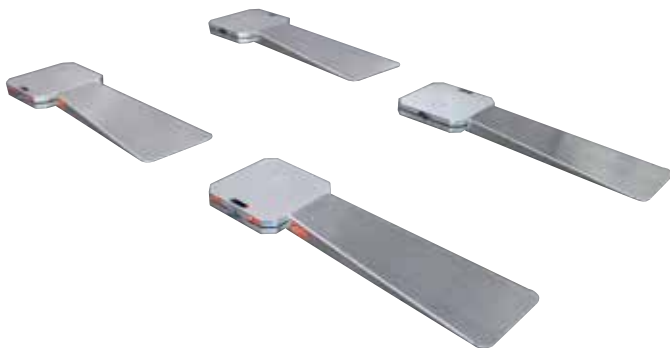


TURN PLATE RAMPS

Roll on to avoid camber bind.

DESCRIPTION	PART #
Turn Plate Ramps - Set of 4	52-79753

Turn Plates not included.



ALUMINUM RAMPS 36" LONG (SET OF 4)

- To get your car on the scales easier.
- Car rolls up on scales much easier than shorter ramps and is quicker than using a jack.
- Formed aluminum, strong, lightweight, and durable.
- Set of 4 for 2.5" scale pads.

DESCRIPTION	PART #
Aluminum Ramps - 36" Long (Set of 4)	52-72537



4"
Screw-in
feet.

4"
Pop-out
feet.

8"
Pop-out
feet.

REPLACEMENT FEET SCREW-IN & POP-OUT

- Screw-in or pop-out swivel feet sold in pairs (not interchangeable).
- Screw-in feet for formed levelers and pop-out feet for billet levelers.
- Screw-in feet are 1/2"-13 thread.
- 8" Legs are made from premium SAE 4140, rolled threads and double heat treated for strength.

DESCRIPTION	PART #
Screw-In Swivel Feet 4" (Pack of 2)	52-72894
Screw-In Swivel Feet 8" (Pack of 2)	52-72890
Pop-Out Feet 4" (Pack of 2)	52-72896
Pop-Out Feet 8" (Pack of 2)	52-72893

FORMED ROLL-OFF LEVELERS FOR 2.5" SCALE PADS

- Roll car off scale pads then back on again to eliminate camber bind.
- Rigid formed and welded aluminum construction.
- Wheel stops on 2 roll-offs for safety.
- 6 HD swivel feet for easy leveling on most any surface (not pop-out style.)
- New design lightweight and more rigid.

DESCRIPTION	PART #
Roll-Off Levelers for 2.5" Scale Pads	52-72905



NOTE: These devices are not for use with our dual cell low deflection scale pads. See billet levelers and roll-offs.

INDIVIDUAL SCALE PAD LEVELERS

- For a quick, accurate setup anywhere.
- 4 HD swivel feet (not pop-out style.)
- Formed and welded.

DESCRIPTION	PART #
Pad Levelers (Set of 4)	52-72900



BUDGET ROLL-OFFS FOR 2.5" PADS ON GROUND

DESCRIPTION	PART #
Budget Roll Offs	52-72904



NASCAR® Xfinity® Series.
Photo courtesy of JR Motorsports
and Harold Hinson Photography.

AUTOMATIC LOAD RATING MACHINES

Our machine has the ability to smash a spring/bump stop setup to 4500# and draw a pull bar up to 3000# capacity with electric motor motion. Our quick adjust wrap around spring removal arm makes easy work out of unloading spring packages, by not relying on coil spacing, but using our special spring removal cups.

DESCRIPTION	PART #
Automatic Load Rating Machine w/ Side Unloader	52-73519
Automatic Load Rating Machine	52-73518

ACCESSORIES

RATER MACHINE PINS



DESCRIPTION	PART #
Rater Machine Pin with Point	52-73526
Rater Machine Pin with Flat	52-73525

SPRING REMOVAL ARM



DESCRIPTION	PART #
Spring Removal Arm	52-73522

SIDE UNLOADER ATTACHMENT



DESCRIPTION	PART #
Side Unloader Attachment for 52-73517 & 52-73518	52-73521

SPRING ADAPTER



DESCRIPTION	PART #
Spring Adapter	52-73523

MANUAL LOAD RATING MACHINES

DESCRIPTION	PART #
Manual Load Rating Machine w/ Side Unloader	52-73520
Manual Load Rating Machine	52-73517

ACCESSORIES	PART #
Rater Machine Pin with Point	52-73526
Spring Removal Arm	52-73522
Spring Adapter	52-73523
Rater Machine Pin with Flat	52-73525
Side Unloader Attachment for 52-73517 & 52-73518	52-73521



RATCHETING SUSPENSION LOAD PULL STICK 7" STICK

This ratcheting load stick bolts in at the car's shock location. The stick allows you to change springs with ease and accuracy, along with being able to pull the race car down to a dynamic attitude to find a suspension bind and to use on jack stands to adjust your compressed loads.

DESCRIPTION	PART #
7" Suspension Load Pull Stick	52-73515



DUAL SUSPENSION LOAD PULL STICK 7" STICK

DESCRIPTION	PART #
7" Dual Suspension Load Pull Stick	52-73516





BILLET ALUMINUM ELECTRONIC COIL SPRING TESTER

- 0-3000 lbs. by 1 lb.
- 8.5" Space between posts.
- Digital travel to .001".
- 6" to 20" tall springs.
- 5" and 5.5" coil springs, square and 6" diameter 'pigtail' ends and coil-overs.
- Includes easy-to-use digital indicator to measure spring travel and a digital load readout.

DESCRIPTION

Billet Aluminum Electronic Coil Spring Tester

PART

52-73505

Batteries not included. Must purchase 2 CR2032 batteries for use.



AIR CYLINDER POWERED BUMP STOP SPRING RATER

- Dual stage control panel for precise travel movement.
- Rate bump stops, sets preload.
- Change springs and keep ride heights and wheel weights the same.
- Test coil-over assemblies or just the springs.
- Digital force and travel measurements (1 lb. and .001").
- Includes spring "Unloader" attachment to remove and install soft springs.
- You have precise control over travel, to .001.

DESCRIPTION

Spring Rater

PART

52-73500

Batteries not included. Must purchase 2 CR2032 batteries for use.



VALVE SPRING TESTER 1400 lbs.

- Spring pressure from 0 to 1400 lbs. by 1 lb. increments.
- Spring travel from 0.000" to 4.000" in .001" increments.
- 1/10 of 1% accuracy – on both spring pressure and travel.
- Positive stop to make repeated spring checks at the same height.
- Check springs with or without retainer.
- Spring travel and pressure can be zeroed at any point.
- Quick and easy to use.
- Runs on battery or 110 volt (220V available.)

DESCRIPTION

Valve Spring Tester to 1400 lbs. by 1 lb.

PART

52-73511

Batteries not included. Must purchase 2 CR2032 batteries for use.

SHOCK UNLOAD COLLAR

1.0"

Additional shock unload collar for use with Bump Stop Spring Tester - 52-73501. This collar is required when using the spring unload feature of the spring tester.

DESCRIPTION	PART #
Shock Unload Collar	52-73509



SPRING RUBBER LARGE SPACING COIL-OVER

Many front running teams are using the new style coil-over springs that have fewer coils and wider spacing, giving more spring travel before coil bind. With these spring rubbers, you can now fill that larger gap between coils to fine-tune your set-up.

DESCRIPTION	PART #
Orange Soft 1-1/4"	52-61016
Red Medium 1-1/4"	52-61041
Blue Hard 1-1/4"	52-61051



SPRING RUBBER STANDARD COIL-OVER & BIG SPRING

- 0.75" Thick (coil-over.)
- 1.25" Thick (5" or 5.5".)

DESCRIPTION	RUBBER	PART #
Yellow 5 – Soft*	Coil-Over Spring Rubber	52-61005
Clear 10*	Coil-Over Spring Rubber	52-61010
Orange 15*	Coil-Over Spring Rubber	52-61015
Red 40*	Coil-Over Spring Rubber	52-61040
Blue 50*	Coil-Over Spring Rubber	52-61050
Black 70 – Hard*	Coil-Over Spring Rubber	52-61070
Red 5/5.5" – Soft	Deep Groove Spring Rubber	52-61140
Blue 5/5.5" – Medium	Deep Groove Spring Rubber	52-61150
Black 5/5.5" – Hard	Deep Groove Spring Rubber	52-61170

*For relative compression only.





LASER CHASSIS HEIGHT CHECKER & LASER LEVEL

- Check actual chassis height when the car is on scales or on a leveler. Don't get your setup 'just right' only to find out the car is too low or too high once you get it back on the ground.
- Includes an easy to set-up self-leveling beam laser, 4 easy to read targets that are held to the frame with magnets, and a separate pad leveling target for leveling the scale pads and establishing the 'ground plane' to measure chassis heights.

DESCRIPTION	PART #
2" to 6" Range	52-72983
2" to 8" Dirt Cars	52-72985
1" to 4.5" Range	52-72981

CHASSIS HEIGHT CHECKER

Imperial &
Metric Readout.



- With the car on the ground, it measures chassis height directly, accurate to .0625".
- With the car on scale pads, it measures from top of pads to frame directly (no subtracting needed.)
- Measures chassis height dynamically, as you work on car. Magnet holds tape to frame. Indicator shows height as car moves up and down. Use set of 4 to quickly see height at all 4 corners.
- 2 Lengths – 24" for perimeter frames, 36" for straight rail cars on right side.
- Measures height from 2"-10" on 24" and 2"-15" on 36".

DESCRIPTION	PART #
Chassis Height Checker - Short 24" Model (1)	52-78320
Chassis Height Checker - Short 24" Model (set of 4)	52-78322
Chassis Height Checker - Long 36" Model (1)	52-78325
Chassis Height Checker - Set of 4 - (2) 24" & (2) 36"	52-78326

Imperial &
Metric Readout.



Not for use with
levelers or roll-offs
or when car is not
on scales.

MINI CHASSIS HEIGHT CHECKER

Great for quick, accurate checks of chassis height. Push it under the car, raise the tape with the knob, pull it out, and read the height. Range is 2"-8", accurate to .0625". This is a shortened and simplified version of the Chassis Height Checker above. Quick, accurate, and easy-to-use. It's a great replacement for 'step' type tools, more accurate, more versatile, and easier to use.

DESCRIPTION	PART #
Mini Chassis Height Checker	52-78318

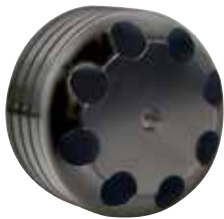
DIGITAL CASTER/CAMBER GAUGES

- AccuLevel™ Pro Model.
- Super Magnetic adapter.
- Padded carrying case.

THIS IS A MUST HAVE TOOL.

Here's a super accurate digital caster/camber gauge that reads to 0.1° (1/10°) and at a price any serious team can easily justify. It comes with our latest magnetic adapter and a padded hard carrying case. There is a backlight for dark areas and a "Hold" feature for hard-to-reach places.

DESCRIPTION	PART #
Caster / Camber w/ AccuLevel™	52-78290
Caster / Camber w/ AccuLevel™ Less Adapter	52-78291
Kart Caster / Camber Gauge w/ AccuLevel™	52-78292



NEW: Billet Magnetic adapter now with 8 premium "Rare Earth" magnets for a stronger pull. Installed from the back for protection. Flush face and easy to clean.



AccuLevel™

Easily removes from gauge and can be used for other measurements such as spoiler and A frame angles, suspension, driveline, etc.

Great for bump stop cars with high LF camber. Reads as high as you need.





Comes with hard case.



DIGITAL CASTER/CAMBER GAUGE ACCULEVEL™ & QUICKSET™ ADAPTER

This is the fastest way to check your front end alignment, just hold it against the rim for easy, accurate readings. No spindle adapters required here. Made from CNC machined billet aluminum. Works on most race cars, up to a 17" wheel. Three point design squares up to your wheel, folds up for easy storage. Uses most caster/camber gauges. Billet aluminum fully CNC machined. Rigid for accurate readings Three-leg design squares gauge to your wheel.

- Billet aluminum fully CNC machined. Rigid for accurate readings. 3-Leg design squares gauge to your wheel.
- Comes with hard case.
- Reads to 0.1°.
- Will work on most cars.
- AccuLevel™ digital readout can be easily removed and used for other angle measurements on the car.
- Can compensate for unlevel ground and more accurate readings.
- Just hold it against the rim to take a measurement, no adapter needed.
- Digital C/C gauge with AccuLevel™ and QuickSet™ adapter with case and reads to 0.1° camber.
- For wheels 12" to 17".

DESCRIPTION	PART #
Digital C/C Gauge with AccuLevel™ & QuickSet™ Adapter	52-78295
QuickSet™ Adapter Only	52-78428



Comes with hard case.



QUICKSET™ ADAPTER FOR LARGE WHEELS

- Folds up for easy storage.
- For 13" to 24" aluminum wheels.
- 'Feet' adapt to wheel bead.
- Folds for storage.

DESCRIPTION	PART #
Digital C/C Gauge with AccuLevel™ & QuickSet™ Adapter	52-78298
QuickSet™ C/C Adapter Only	52-78430
Stepped Tips for QuickSet™ Adapter (Set of 3)	52-78306



VIAL STYLE CASTER/CAMBER GAUGE WITH QUICKSET™ ADAPTER

- No adapter needed - just hold it against the wheel.
- Reads camber +/- 9°, caster + 12° to -4°.
- For wheels 13" to 17".

DESCRIPTION	PART #
Billet Caster / Camber Gauge with QuickSet™ Adapter	52-78274
Pointed Tips QuickSet™ Adapter	52-78305

BILLET CASTER/CAMBER GAUGES

CNC machined from a solid billet of T6 aluminum polished, Bright Dip anodized and laser engraved.

THIS IS A PROFESSIONAL GRADE TOOL.

BILLET CASTER/CAMBER GAUGES

- Expanded range - measures camber to + or -9° and caster + 12° to -4°.
- Glow-in-the-dark vials, much easier to read.
- CNC machined billet aluminum-polished, Bright Dip anodized, laser etched.
- Super Magnetic adapter, stronger pull. Uses 8 premium "Rare Earth" magnets to hold to your hub better.
- CNC machined for a dead flat surface and the highest accuracy possible.
- Can measure caster with or without turnplates. Best accuracy if used with turnplates.
- All vials checked for accuracy to 1/4°, assembled on a precision fixture.



All gauges come with a premium hard case.

DESCRIPTION	RED PART #	BLACK PART #
Gauge with Magnetic Adapter	52-78272	52-78260
Gauge with GM Factory Adapter 3/4" – 20	52-78261	52-78262
Gauge with Wide 5 Adapter 1-13/16" – 16	52-78263	52-78264
Gauge with Kart Adapter 5/8" – 18	52-78266	52-78265
Gauge and Case Only – NO ADAPTER	52-78273	52-78250

SEPARATE ADAPTERS

DESCRIPTION	PART #
Wide 5 Spindle Adapter 1-13/16" – 16	52-78405
Factory GM Adapter 3/4" – 20	52-78410
Allison Legacy / Big Ford Adapter 13/16" – 20	52-78412
Ford Pinto Adapter 3/4" – 16	52-78414
Billet Magnetic Adapter – For 52-78272	52-78424
Large Wheel QuickSet™ Billet Caster / Camber Adapter	52-78430
Fine Go-Kart Adapter 5/8" – 18	52-78438
Kart Adapter – (Metric) – 14 mm x 1.5	52-78439
Legend Car – (Metric) – 19 mm x 1.5	52-78445
QuickSet™ Billet Caster / Camber Adapter*	52-78428

*For more info on QuickSet™ Adapters see p.26



Magnetic adapter with 8 premium "Rare Earth" magnets that hold to your hub better. Magnets installed from the back.

Most adapters screw onto spindle, except magnetic and QuickSet™.



KART CAMBER GAUGE



- Specially built for karts.
- Reads ± 6° camber.
- 5/8"-18 screw-on kart adapter.
- Metric adapters available.

DESCRIPTION	PART #
Kart Camber Gauge	52-78100



ALUMINUM A-ARM SPACERS

- Won't fall out when setting front end.
- Lightweight aluminum.
- 6" Bolt centers.

DESCRIPTION	PART #
Kit (all 4) 1 Each of 1/16", 1/8", and 2 Each of 1/4"	52-78512

TOE-IN PLATES DELUXE HD

- Thicker material and deeper bend gives you more rigid plates for better accuracy.
- Higher kick-out on bottom holds plate against the wheel better. Great for cars with high camber LF wheels (bump stop cars).
- Magnets on one plate hold the tapes in place.



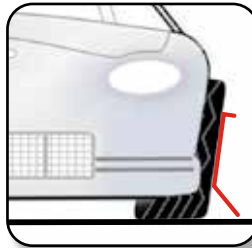
DESCRIPTION	PART #
Deluxe HD Toe-In Plates (Pair)	52-79505



Magnets hold tapes in place during use.



Easier to read.



Great for high camber LF wheel.



Magnets hold tapes in place during use.



Magnets hold tapes in place as you work.

TOE-IN PLATES STANDARD

- Quickest and simplest way to measure toe-in.
- Rest one of these plates against the tire on each side and measure toe directly using the 2 tapes included.
- Formed design is rigid for accuracy and stays put against the tire.

DESCRIPTION	PART #
Standard Toe-In Plates (Pair)	52-79501



QuickToe™ SETTING TOOL

Here's a different way to set your critical toe-in. A pair of three pointed fixtures mount to the wheels (with magnets) for super accuracy. You can even attach a caster/camber gauge to either side. Use tapes included to measure toe directly.

- Includes set of 2 fold-up fixtures, 2 tapes, hard carrying case.
- Magnets in the legs hold your steel wheel – one on each side.
- Eliminates tire 'bulge' error.

DESCRIPTION	PART #
QuickToe™ Setting Tool	52-79630



Mounts on the wheel for best accuracy.



Makes setting toe a quick 1 person job.



Attaches to steel wheels.



Small wheels on the bar let it slide under the car more easily.

TOE-IN BAR

Similar to our 52-79620 Toe-In Gauge, but this new model measures to the outside of the tire. No scribe line needed. Reads toe to 1/16". Can be done by one person. Billet aluminum. Adjustable up to 88" in width. Great for wide track cars, Corvettes, etc.

DESCRIPTION	PART #
Toe-In Bar	52-79622



TOE-IN GAUGE

To get a very accurate toe-in measurement, jack up front wheels and scribe a true running line on the face of the tire. (See Billet Tire Scribe.) Place the gauge in front of the tires and align the pointers with the scribe lines. Then, move the gauge to the rear of the tires and align the fixed end with the scribe line. On the other end, loosen the thumb screws and move the slider until the pointer aligns with the other line. Now read the exact toe-in on the scale.

- An accurate way to measure toe-in to within 1/16".
- Easily done by one person.
- See 52-79610 Billet Tire Scribe.

DESCRIPTION	PART #
Toe-In Gauge	52-79620



BILLET TIRE SCRIBE

- Use to make a true running line on the face of the tire for measuring toe-in.
- Use with 52-79620 Toe-In Gauge.
- Spring loaded for easy one person use.
- Folds up for easy storage.

DESCRIPTION	PART #
Billet Tire Scribe	52-79610



TIRE ROLL OUT FIXTURE

- Wheel spins freely.
- Find leaks, punctures, or tire damage fast.
- Includes 10' stagger tape.

DESCRIPTION	PART #
Tire Roll Out Fixture	52-50853



POWER TAPES

- 1/4" x 10' for stagger inches only.
- 3/4" x 16' for toe-in, wheelbase, etc. Inches only.

DESCRIPTION	PART #
Power Tape 1/4" x 10'	52-50870
Power Tape 3/4" x 16'	52-50875



CHASSIS SETUP CHARTS

- Punched for 3 ring binder.
- Packaged 1 pad, 50 sheets.

DESCRIPTION	PART #
Chassis Setup / Tire Chart	52-22528

PRECISION BUMP STEER GAUGE WITH BILLET PLATE

This simplified design uses a single indicator to tell you the exact amount of bump steer within .001". No need to subtract one dial reading from another, less chance for error.

- Precision plate. 3/8" Thick T6 aluminum billet for the ultimate in accuracy. Anodized and laser engraved.
- Compact frame. More rigid billet and tube design for the best accuracy. Bright Dip anodized.
- Most accurate, easiest, and quickest way to measure your critical bump steer.
- Extended height design. Check bump steer at ride height or on stands.
- 3/8" Thick wheel plate has mounting holes for most 5 bolt patterns (4-1/2" to 5") and most wide 5 with 4, 5, and 8 bolt flanges.
- Center hole is 3-1/4".

DESCRIPTION	PART #
Gauge with 5 Bolt, Wide 5 Plate	52-79005
Gauge with Blank Billet Plate	52-79011
Gauge with 4 & 5 Bolt Sport/Compact Plate	52-79003



DIGITAL BUMP STEER GAUGE WITH BILLET PLATE

- Similar to 52-79005 above, but with precision digital readout.
- Easy to use – Push Zero, move suspension, read bump directly to .001".
- Includes billet plate – see above.

DESCRIPTION	PART #
Digital Bump Steer Gauge with Billet Plate	52-79015



SNAP CAP HUB MOUNTING STAND-OFFS

- For hubs with no mounting holes. These stand-offs screw on wheel studs (5/8" C.)
- Set of 2 stand-offs and bolts.



DESCRIPTION	PART #
Hub Mounting Stand-Offs	52-79121

BILLET PLATE 3/8" THICK

DESCRIPTION	PART #
5 Bolt, Wide 5	52-79020
Blank Plate	52-79022
4 & 5 Bolt Sport Compact	52-79023



STORAGE CASE BUMP STEER GAUGE

DESCRIPTION	PART #
Storage Case	52-79019



STAGGER GAUGES

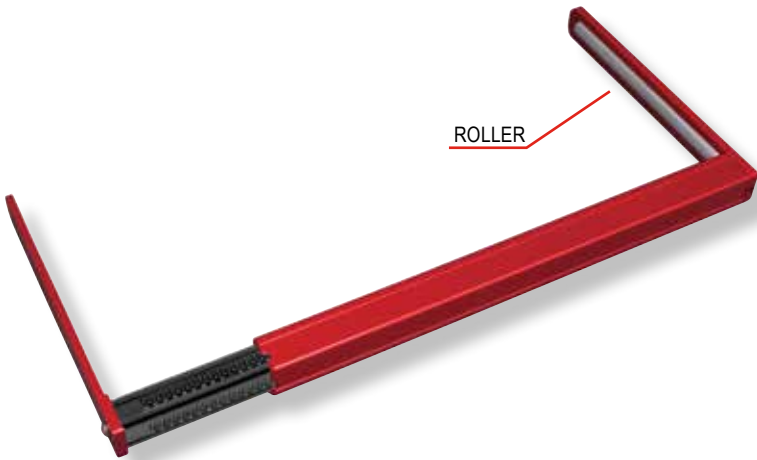
CHECK YOUR STAGGER QUICKLY AND ACCURATELY



BILLET ALUMINUM STAGGER GAUGE

- 3/8" Thick T6 billet aluminum arms for extra rigidity and accuracy.
- Tight tolerance square tubes for accuracy. Custom extruded 6061-T6 aluminum.
- 62" to 110" circumference, in 1/8" increments.
- Scale on two sides. Easy to read with tires on the car or flat on the ground.
- Bolted together - no welding distortion.
- Anodized red.

DESCRIPTION	PART #
Billet Aluminum Stagger Gauge	52-50840



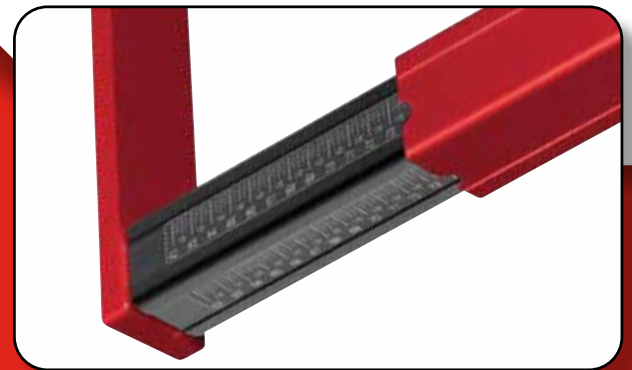
DELUXE BILLET STAGGER GAUGE WITH ROLLER

- Roller on one end makes measurements easier.
- 3/8" Thick T6 billet aluminum arms for extra rigidity and more accurate readings.
- Measures from 62" to 110" in 1/8" increments.
- Tight tolerance square tube design for accurate results.
- Extra long billet arms, longer 9-3/4" for wider tires.
- Scale on two sides - easy to read with tires on the car or flat on the ground.
- Bolted together, no welding, anodized red.

DESCRIPTION	PART #
Deluxe Billet Stagger Gauge with Roller	52-50846



Both models use custom tight tolerance aluminum tubes for more accurate readings.



Both have dual scales on two sides. Easy to read with tires on the car or flat on the ground.



TIRE PRESSURE GAUGES

- Glow-in-the-dark dials.
- New 40 psi models.
- Gauges are damped for greater accuracy and durability.
- Digital, analog, and liquid filled.
- Durable mechanisms stand up to tough racing use and maintain accuracy.
- Most gauges come with both angle and ball chucks.

THE PERFECT GAUGE FOR EVERY PREFERENCE.

MAGNUM™ 3.5" FACE

p.37

- Dual bleed buttons. Holds pressure.
- 40 psi plus 0-15, 30, 45, & 60 psi.
- Includes hard case.



LIQUID FILLED 2.5" FACE

p.38

- Special valve compensates for temperature changes.
- 45 psi plus 0-15, 30, 45, & 60 psi.



DELUXE 2.5" FACE

p.38

- Holds pressure until released.
- 45 psi plus 0-15, 30, 45, & 60 psi.



QUICK FILL 2.5" FACE

p.39

- Deluxe, Liquid Filled, Magnum™, or Digital.
- 0-60 psi.



ULTIMATE DIGITAL WITH PYROMETER

p.34

- Record pressures and temperatures, save 4 pressures & 12 temperatures on display, and is accurate to 0.1%.
- Tire probe & hard case.



PRO DIGITAL 2.5" FACE

p.35

- Reads to 0.1 psi.
- Accurate to 0.3%.
- Back light.
- 0-25 & 60 psi with dual bleed buttons.
- Includes hard case.



SEMI PRO DIGITAL 2.5" FACE

p.36

- Reads to 0.1 psi, accurate to 0.5%, back light.
- 2.5" face, 0-60 psi.



BASIC DIGITAL 2" FACE

p.36

- 2" Face, easy-to-read numbers to 0.2 psi.
- Accurate to 0.8%, 0-60 psi & 0-100 psi.



BASIC TIRE GAUGE 2" FACE

p.39

- Accurate and reliable, great value.
- 0-15, 30 & 60 psi.
- Glow-in-the-dark face.



A TOTALLY NEW KIND OF TIRE PRESSURE GAUGE

Tire Pressure & Pyrometer Combined



Angle and ball chuck included.

US Pat. #6,983,209

TEMPERATURE COMPENSATING TIRE PRESSURE GAUGE TO 0.1 PSI

If tire pressures are critical to your car's performance, closer than +/- 1 psi, then you really need what this gauge can do for you. Pressures must be set in the pits, but the tires sitting there can easily vary by as much as 20°. If you want the tire to grow to 38 psi on the track, you set it in the pits at 28 psi. Sounds reasonable. You have been doing it for years.

But what was the temperature in the pits? If it was 80° you are OK. But what if one or two had been in the sun and had crept up to 90°? For every 10° temperature change, there is a 0.8 psi change. So instead of 28 psi (at 90°) you effectively set it at 27.2 psi. (What it would have been at 80° rather than 90°?)

Would this make a difference? If it would, you really need to set all starting pressures at the same temperature, week in and week out. This way, the on-track pressures will be the same. But how do you do that? You will have great difficulty controlling the temperatures, and yet you need to.

A better way is to correct the pressures to what they would have been had you been able to keep the tires at a constant temperature. You could use a pyrometer to measure the tire's temperature, then use a calculator to compute what the pressure should be at that temp rather than just putting in 28 psi.

But you don't have to do that. This "Temperature Compensating Tire Pressure Gauge" will do it for you. It can take the temperature of the tire using a traditional tire temp probe, instantly calculate the correction back to a standard temperature, and show the pressure you should be putting in the tire. It may not be the actual pressure at that moment, but it will be the correct pressure when it counts on the track.

Find more information and compare with other Longacre® Gauges on p.36



With Tire Temperature Probe

- Corrects tire pressures back to a standard temperature.
- Displays an estimate of the pressure at this temperature.
- Reads 0-100 psi by 0.1 psi.
- Will also function as a traditional tire pressure gauge showing actual pressures with all 4 stored on display.
- Works as a precision tire pyrometer, displaying all 12 tire temperatures at the same time.
- Back light for night use.

DESCRIPTION	PART #
0-100 psi Gauge w/ Pyrometer & Case	52-53050
0-100 psi Gauge w/ Case Only	52-53053

TRADITIONAL TIRE PRESSURE MODE:

Displays actual tire pressures.



PYROMETER MODE:

Ultra fast response and displays all 12 temperatures so you don't need to write them down as you go.



COMPENSATED PRESSURE MODE:

Displays what pressures would be at the standard temperature (80°F.)



PRO DIGITAL TIRE GAUGES

NEW AND IMPROVED ELECTRONICS WITH HIGHER ACCURACY & WIDER TEMPERATURE OPERATING RANGE.

ASPHALT

0-60 PSI • DUAL BLEED BUTTONS

- Accurate to 0.3%, reads to 0.1 psi.
- Rubber bumper protects 2.5" gauge.
- 17" Hose.
- Swivel chuck.
- Auto-Off feature to extend battery.
- Hard case included on all Pro Digital.

DESCRIPTION	PART #
Gauge with Angle & Ball Chuck	52-53000

DIRT LATE MODEL, SPRINT, KART

0-25 PSI • DUAL BLEED BUTTONS

- Reads to 0.1 psi.
- 2 Bleed buttons give faster adjustment at low pressures.

DESCRIPTION	PART #
Gauge with Angle & Ball Chuck	52-53010

METRIC DIGITAL TIRE GAUGE

METRIC 0-4 BAR BY .01 BAR

DESCRIPTION	PART #
Gauge with Angle & Ball Chuck	52-53060

PRO DIGITAL TIRE GAUGE

0-125 PSI • FOR THE HAULER OR TRAILER

Reads to 0.5 psi.

DESCRIPTION	PART #
Gauge with Angle & Ball Chuck	52-53028
Gauge with Foot Valve (No Angle & Ball Chuck)	52-53026

QUICK FILL DIGITAL GAUGE

0-60 PSI

Connect to air line fill and bleed with one gauge. Reads to 0.1 psi.

DESCRIPTION	PART #
Gauge with Angle & Ball Chuck	52-53008



Hard case included on all Pro Digital.

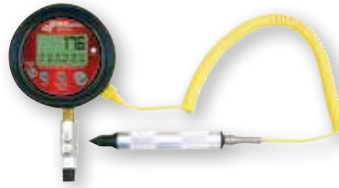


Angle and ball chuck included on most Tire Gauges.



ULTIMATE DIGITAL 0-100 PSI

- Accurate to 0.1%, reads to 0.1 psi.
- 3.5" Face.
- Saves all 4 tire pressures on the display.
- Back light for night use.
- Swivel angle chuck and 17" hose for ease of use.
- 3 High volume bleed-off buttons for fast setting on pit stops.
- Includes hard case.
- Ball chuck included.
- Comes with a rubber bumper for gauge protection.



Tire temperature pyrometer probe included with [52-53050](#) see p.34 for details.

DESCRIPTION	PART #
0-100 psi Gauge w/ Pyrometer & Case	52-53050
0-100 psi Gauge w/ Case Only	52-53053



SEMI PRO DIGITAL 0-60 PSI

- Reads to 0.1 psi 0.5% accuracy (0.5% of 1%).
- 2.5" Face with larger easy-to-read numbers.
- Back light for night use.
- Air release button, 17" hose and swivel chuck.

DESCRIPTION	PART #
0-60 psi	52-53003



BASIC DIGITAL 0-100 PSI • 0-60 PSI

- 2" Face with large numbers.
- Reads to 0.2 psi 0.8% accuracy.
- Air release button, 14" hose.

DESCRIPTION	PART #
0-60 psi	52-53006
0-100 psi	52-53036

PRO PRECISION TIRE GAUGE

4.5" FACE

- 0.5% Accuracy.
- Gauge bumper.
- Dual button air release.
- Swivel angle chuck.
- Holds reading until released.
- Comes with hard case.
- Glow-in-the-dark 4.5" face.



DESCRIPTION	PART #
0-60 psi by 0.5 psi	52-52000

MAGNUM™ TIRE GAUGE

3.5" FACE

- 3.5" Glow-in-the-dark face for high accuracy and the easiest readability.
- High flow release button, one piece swivel chuck.
- Holds pressure until released.
- Internal gauge damper for more consistent, accurate reading.
- 17" Hose with swivel.
- Comes with hard case.



All Magnum™ gauges come with dual bleed buttons for faster setting.

DESCRIPTION	PART #
0-60 by 0.5 lb.	52-52001
0-40 by 0.5 lb.	52-52011
0-30 by 0.25 lb.	52-52021
0-15 by 0.25 lb.	52-52031



Includes hard carrying case.





Special Equalizer Valve

Equalizes internal pressure for the most accurate readings.

**LIQUID FILLED
2.5" FACE**

- 2.5" LF gauge with bumper.
- Holds pressure until released.
- Glow-in-the-dark dial face.
- 17" Hose with swivel chuck.
- 15 psi gauges come with dual bleed buttons for faster setting.



Dual Bleed Buttons

DESCRIPTION	PART #
0-60 psi by 1/2 psi	52-52002
0-45 psi by 1/2 psi	52-52012
0-30 psi by 1/2 psi	52-52022
0-15 psi by 1/4 psi	52-52032

Note: Liquid Filled gauges are filled to 85% to allow for temperature expansion.

**DELUXE TIRE GAUGE
2.5" FACE**

- 2.5" Glow-in-the-dark face for easy readability.
- High flow release button and one piece swivel chuck.
- Holds pressure until released.
- Internal gauge damper for more accurate readings and longer life.
- 17" Hose and angle swivel chuck.



DESCRIPTION	PART #
0-60 by 0.5 lb.	52-52003
0-40 by 0.5 lb.	52-52013
0-30 by 0.25 lb.	52-52023
0-15 by 0.25 lb. Dual Bleed	52-52033
Metric 0-4 BAR by 0.01 BAR	52-52073
0-100 Angle Chuck	52-52053
0-100 With 'Foot' Valve	52-52063



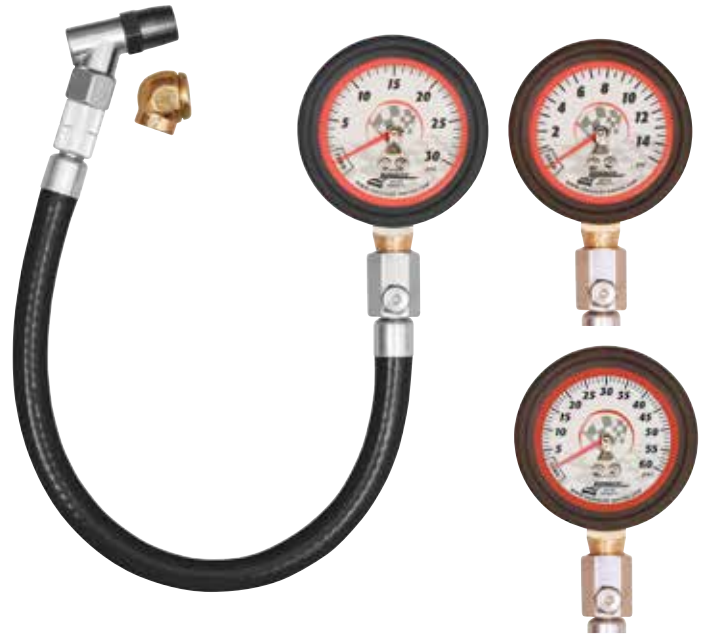
52-52063 Features 'Foot' valve for 'Dualities'.

BASIC TIRE GAUGE

2" FACE

- Air pressure release button.
- Internal gauge damper for more accurate readings and longer life.
- 2" Dial face, 14" hose and swivel chuck.
- Glow-in-the-dark dial faces.
- Note: Does not hold pressure.

DESCRIPTION	PART #
0-60 by 1 lb.	52-52004
0-30 by 0.25 lb.	52-52024
0-15 by 0.25 lb.	52-52034



QUICK FILL

2.5" & 3.5" FACE

- Connect your air line, press the lever, and fill your tires twice as fast.
- Bleed button for excess pressure.
- 4 Different dial or digital gauges.

DESCRIPTION	PART #
2-1/2" Deluxe Gauge	52-52009
3-1/2" Magnum™ Gauge	52-52007
2-1/2" Liquid Filled Gauge	52-52008
2-1/2" 0-125 Digital Gauge	52-53098
2-1/2" 0-60 PRO Digital Gauge	52-53008



DELUXE

52-52009



LIQUID FILLED

52-52008



DIGITAL

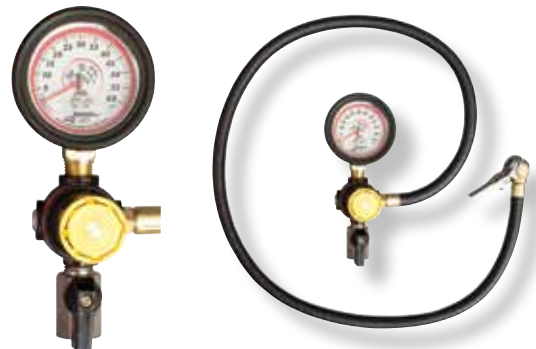
52-53008



AUTO-FILL TIRE INFLATOR

- Automatically fills tires to pre-set pressure.
- Bleeds off tires at an adjustable rate.
- Regulator and tire pressure gauge, hose with clip-on chuck, and regulator valve.

DESCRIPTION	PART #
Auto-Fill Tire Inflator / Deflator	52-50581





PRO-TEAM TIRELIEFS™ KIT INCLUDES HARD CASE

• Kit includes: 6 TIRELIEF™ valves, 12 wheel adapters, setting tool, inflation adapter, and carrying case.

• TIRELIEFS™ are designed only to relieve normal tire pressure build-up on the track. They should not be used as a safety device.

DESCRIPTION	PART #
Pro-Team TIRELIEFS™ Kit	52-50100



QUICK CHANGE ADAPTER

- Makes quick work of changing or resetting TIRELIEFS™.
- Unscrew and remove the TIRELIEF™ valve from the rim without losing air pressure.
- Aircraft alloy aluminum, low profile.
- Installs in 5/8" hole in rim, use factory valve stem hole or drill a new one.

DESCRIPTION	PART #
TIRELIEFS™ Kit	52-50240
Replacement Grommets 4*	52-50301

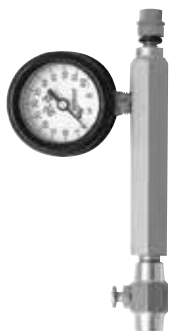
*Not for use with 52-50265.



INFLATION ADAPTER

- Use to air up tires when a quick change adapter is installed in the valve stem hole.
- Saves drilling a hole in the rim.

DESCRIPTION	PART #
TIRELIEFS™ Kit	52-50220



TIRELIEF™ SETTING TOOL

- Let's you set your TIRELIEFS™ valves before you install them in the rims.
- Uses compressed air to accurately simulate tire pressure.

DESCRIPTION	PART #
0-60 psi	52-50290



TIRELIEFS™ TIRE PRESSURE RELIEF VALVES

- Relieves tire pressure build-up automatically as you race.
- 3-40 psi range.
- 100 Mesh inlet filter, to keep dirt inside tire from plugging TIRELIEFS™.
- Lightweight aluminum, only 9 grams, won't affect wheel balance.
- To install, drill, and tap a 1/8" NPT thread in rim.

DESCRIPTION	PART #
Set of 4	52-50000



HI TEMP 400° SILICON VALVE STEM QC GROMMETS

DESCRIPTION	PART #
TIRELIEF™ QC Grommets*	52-50301
TIRELIEF™ Replacement "O" Rings & Quad Seals - Set of 4	52-50008

*Not for use with 52-50265.



LOW PROFILE VALVE STEMS

- High temperature grommets.
- Low profile.
- Set of 4.
- Hole size to be drilled into the wheel: 5/8".

DESCRIPTION	PART #
Brass Set of 4	52-50265

DUROMETERS

DIGITAL & DELUXE DIAL TYPE

- Straight edge on base to 'rock' durometer for more consistent results.
- Dial type reads from 0-100 points.
- Shore 'A' scale.
- Non-slip coating for better grip.
- Dial type calibration test block included.
- Dial type can be 'Zeroed'.
- Come with hard case and pouch.

DESCRIPTION	PART #
Digital Durometer	52-50547
Deluxe Dial Type Durometer	52-50546



BASIC DUROMETER

DIAL TYPE

- Racing tire hardness tester.
- Reads from 0-100 points.
- Dial can be 'Zeroed'. (Shore 'A' scale.)

DESCRIPTION	PART #
Basic Dial Durometer	52-50553
Durometer for RC Car Tires	52-79980



TREAD DEPTH GAUGES

DIAL TYPE & PRO DIGITAL

- Dial Type reads in 1/32", accurate to 1/128".
- Pro Digital is the ultimate in digital accuracy, to 0.001".
- Quick and easy to use.
- Precision billet aluminum base.
- Can be easily field calibrated.

DESCRIPTION	PART #
Digital Tread Depth Gauge with Hard Case	52-50565
Dial Tread Depth Gauge with Pouch	52-50560



DUROMETER & TREAD DEPTH GAUGE SETS

DIAL TYPE & DIGITAL

DESCRIPTION	PART #
Dial Durometer & Tread Depth Gauge Set	52-50556
Digital Durometer & Tread Depth Gauge Set	52-50557





MEMORY TIRE PYROMETER

Large High Resolution tablet display shows all 12 temperatures at the same time. Memory for 100 sets of temps can be scrolled up or down to compare with current temperature.

- Fast response for quick temps - use the exclusive "Anticipation Mode" that uses a precision algorithm to predict the ultimate temperature. Makes taking all 12 temps even faster and more accurate.
- Computes tire temperature averages.
- Fast response tire probe with adjustable tip length.
- Comes with hard carrying case.
- Available with a 10" or 7" tablet or use the tablet from your scales (Also compatible with Android™ Smartphones). Just download the free app.

NEW FEATURE!
READER ATTACHES TO MAGNETIC BASE ON TABLET.

DESCRIPTION	TABLET	PART #
Pyrometer with Tablet	10" Included	52-50652
Pyrometer with Tablet	7" Included	52-50650
Pyrometer Probe	Not Included	52-50745
Replacement Pyrometer Probe	Not Included	52-50730
Adjustable Pyrometer Probe	Not Included	52-50750



DELUXE MEMORY TIRE PYROMETER

Memory stores 10 complete sets of temps (120 total) with quick and easy recall. Special software prevents accidental erasure of temps. Take tire temps in the pre-programmed order or select any order you prefer. Computes tire temp averages for temps just taken, recalled from memory, or you can even manually enter temps taken previously to compute averages. Advanced electronics stabilize your readings quickly giving you accurate, consistent results. Pyrometer comes with a built-in night light with auto shutoff, fast response coiled cord adjustable tire probe, and carrying case. It also features a built-in four car stopwatch with 70 lap memory for all 4 cars.

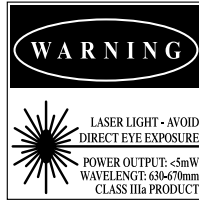
- Displays all 12 tire temperatures at the same time.
- Memory stores 10 complete sets of temperatures.
- Computes tire temperature averages.
- Built-in 4 car 70 lap Memory Stopwatch with interval timing.
- Electronics stabilize readings for consistent results.
- Takes temperatures in any order.
- Carrying case & adjustable probe included.
- Built-in night light.
- Uses 9 volt battery (included).
- Interval Timing: In addition to our 4 car built-in stopwatch function you can now get overall lap times plus 3 different segments within that lap. Check corner exit times, straightaway times, or individual corner times - any partial lap segment time you want.
- Adjust the probe depth to your preference or type of tire.
- Metric Option: Factory switchable to read in °F or °C.
- Standard version comes without averaging, stopwatch, or backlight, and has non-adjustable tip probe.

See p.34 for info on our
**TEMPERATURE COMPENSATING
 TIRE PRESSURE GAUGE**

DESCRIPTION	PART #
Deluxe Memory Tire Pyrometer, Reads °F	52-50690
Deluxe Memory Tire Pyrometer, Reads °C	52-50691
Standard Memory Tire Pyrometer, Reads °F	52-50682
Standard Memory Tire Pyrometer, Reads °C	52-50683

INFRARED LASER PYROMETER STANDARD & HIGH TEMPERATURE

- Instant response, non-contact temps.
- 600°F for Standard, 1400°F for High Temp.
- Reads Fahrenheit or Celsius.
- Back light for night use.
- Laser sighting for accuracy.
- Holds readings longer for easier use.



DESCRIPTION	PART #
Infrared Laser Pyrometer	52-50612
High Temperature Infrared Laser Pyrometer	52-50615

DUAL FUNCTION LASER PYROMETER WITH TIRE PROBE

- Use as a probe type pyrometer for tires or as non-contact IR pyrometer.
- Accurate, fast response in either mode.
- 1400° Range on IR, 500° range with tire probe.
- Reads Fahrenheit or Celsius.
- Includes tire probe and new hard case.

DESCRIPTION	PART #
Infrared Laser Pyrometer with Tire Probe	52-50620



TIRE PYROMETERS BASIC & DELUXE

- Accurate, fast response.
- Reads Fahrenheit or Celsius.
- Low battery indicator and auto shut-off.
- 2000° Range on deluxe, 1400° range on basic (with proper probe.)
- Can hold highest temperature reached.
- Compares one temperature to another with the push of a button.
- Deluxe comes with coil cord tire probe and carrying case.
- Basic pyrometer comes with straight cord tire probe.

DESCRIPTION	PART #
Basic Digital Tire Pyrometer	52-50635
Deluxe Digital Tire Pyrometer & Case	52-50640
Deluxe Digital Tire Pyrometer & Clipboard	52-50642



TIRE TEMPERATURE CHARTS

- Chassis setup sheet on front. 2 tire temperature charts on back.
- 1 Pad of 50 sheets.

DESCRIPTION	PART #
Tire Temperature Charts	52-22528





POLISHED AIR TANKS PORTABLE ULTRA LIGHTWEIGHT

- Available with or without filler tire gauge.
- Special Inlet valve fills tank in less than 15 seconds with adequate air supply.
- Filling most tanks can take 90 seconds of precious practice time.
- These tanks include a Universal Air Quick-Change coupler.

DESCRIPTION	PART #
Deluxe 5 Gallon Tank - No Tire Pressure Gauge - with Special Inlet Valve	52-50316
Deluxe 5 Gallon Tank w/ Quick Fill Tire Pressure Gauge - Angle Chuck*	52-50315
Deluxe 5 Gallon Tank w/ Digital Quick Fill Tire Pressure Gauge - Angle Chuck*	52-50311

*Gauges read 0-60psi.



NEW "Mini" TANK

36" Hose, tire chuck, standard fill valve.

LIGHTWEIGHT AIR TANKS

DESCRIPTION	PART #
Standard 5 Gallon Tank - No Tire Pressure Gauge	52-50305
Standard 2 Gallon Tank - No Tire Pressure Gauge	52-50308

COMPACT VALVE CORE TOOL

- Aluminum body, steel tip.
- Put on your key chain, for quick access.



DESCRIPTION	PART #	PRICE
Core Tool	52-50272	

4 WAY VALVE CORE REPAIR TOOL

- R & R valve cores.
- Recuts damaged threads.



DESCRIPTION	PART #	PRICE
Core Repair Tool	52-50274	

BILLET ALUMINUM VALVE CORE STEM TOOL

- Anodized billet aluminum with stainless steel tip.
- Includes 3 spare valve cores.
- Conveniently stores spare valve cores in the handle.



DESCRIPTION	PART #
Core Stem Tool	52-50270

FULL FLOW AIR FILLER CHUCK

- For filling tires.
- Not for gauges.
- Fitting not included.



DESCRIPTION	PART #
Filler Chuck	52-50490

TIRE GAUGE CHUCKS

- Swivel fitting for easy use.
- "Angle" style chuck.
- "Ball" chuck.



DESCRIPTION	PART #
Angle Chuck	52-50496
Ball Chuck	52-50494

TIRE MARKING STICK

Writes reliably on any surface.



DESCRIPTION	PART #
Single Stick	52-50880
Box of 12 Bulk	52-50881

UNIVERSAL AIR TOOL QUICK DISCONNECT

- Connects to all 3 common fittings.
- No more switching fittings to use that new or borrowed tool.



DESCRIPTION	PART #	PRICE
Pair	52-36013	

TIRE MARKING PEN

- Makes a finer line, easy to read.
- Mark tire sizes, pressures, etc.
- Hard paint won't come off from heat.



DESCRIPTION	PART #
Single Stick	52-50882
Box of 12 Bulk	52-50883



LONGACRE WATERPROOF GAUGES

THE NEXT GENERATION IN INSTRUMENTATION HAS ARRIVED! Longacre Racing Products is proud to introduce the all-new Digital Elite Waterproof Gauges and SMi™ Elite Waterproof Gauges. Engineered for wet and dirty environments, these gauges provide the absolute best in waterproof sealing. These elite gauges provide the most precise measurements on the market with unmatched resistance to vibration, heat, and moisture.

Digital Elite Waterproof Gauges



SMi™ Elite Waterproof Gauges



Digital Elite Waterproof Gauges



NEW!

WATERPROOF GAUGES FEATURES AND BENEFITS

- The new waterproof design eliminates the need to remove gauges before you wash your car.
- Manufactured with IP-66 certified methods to be waterproof; dust tight and safe against powerful water jets.
- Digital Elite gauges feature LED digital numbers and illuminated dial lights.
- Custom set your warning settings and brightness.
- Panels are completely wired and ready for quick installation.
- Many panel combinations are available to suit your specific racing needs.
- Available with sensors included or without sensors to allow a retro fit to your existing Longacre® sensors.

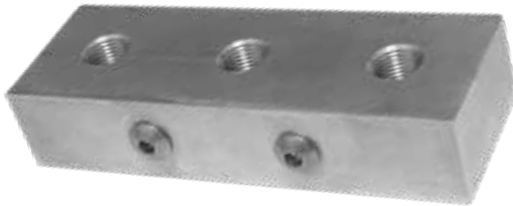
GAUGES WITH SENSORS	PART #
Oil Pressure 0-120 psi Gauge	52-46857
Fuel Pressure 0-15 psi Gauge	52-46858
Fuel Pressure 0-120 psi Gauge	52-46859
Water Temperature 100-280°F Gauge	52-46860
Oil Temperature 100-340°F Gauge	52-46861
Volt Gauge, 8-18 VOLT	52-46862
Tachometer, 2-5/8"	52-46863
Water Pressure 0-60 psi Gauge	52-46864

GAUGES ONLY	PART #
Oil Pressure 0-120 psi Gauge	52-46865
Fuel Pressure 0-15 psi Gauge	52-46866
Fuel Pressure 0-120 psi Gauge	52-46867
Water Temperature 100-280°F Gauge	52-46868
Oil Temperature 100-340°F Gauge	52-46869
Water Pressure 0-60 psi Gauge	52-46872

Digital Elite **WATERPROOF ALUMINUM PANELS**

PRESSURE SENSOR FIREWALL MOUNTS FOR LED WATERPROOF GAUGES

MUST BE USED FOR WARRANTY WITH LED AND SMI™ GAUGES!



Isolates sensors to eliminate engine vibrations. Available with 1, 2, and 3 ports. Allows for remote mounting sensors away from heat. Allows remote mounting for applications where the engine is far from the drivers compartment. For use with all 1/8" NPT pressure sending units.

DESCRIPTION	PART #
1 Port Sensor Mount	52-43540
2 Port Sensor Mount	52-43541
3 Port Sensor Mount	52-43542



WATERPROOF LED PANELS

NEW!

DESCRIPTION	PART #
2 Gauge - Oil Pressure, Water Temperature	52-44660
3 Gauge - Oil Pressure, Water Temperature, Oil Temperature	52-44661
3 Gauge - Oil Pressure, Water Temperature, Fuel Pressure-15 psi	52-44662
3 Gauge - Oil Pressure, Water Temperature, Fuel Pressure-120 psi	52-44663
4 Gauge - Oil Pressure, Water Temperature, Oil Temperature, Fuel Pressure-15 psi	52-44666
4 Gauge - Oil Pressure, Water Temperature, Water Pressure, Fuel Pressure-15 psi	52-44668
4 Gauge - Oil Pressure, Water Temperature, Oil Temperature, Water Pressure	52-44669
5 Gauge - Oil Pressure, Water Temperature, Oil Temperature, Water Pressure, Fuel Pressure-15 psi	52-44670
6 Gauge - Oil Pressure, Water Temperature, Oil Temperature, Fuel Pressure-15 psi, Water Pressure, Volt	52-44671
2 Gauge - Oil Pressure, Water Temperature, TACH	52-44672
3 Gauge - Oil Pressure, Water Temperature, Oil Temperature, TACH	52-44673
3 Gauge - Oil Pressure, Water Temperature, Fuel Pressure-15 psi, TACH	52-44674
3 Gauge - Oil Pressure, Water Temperature, Water Pressure, TACH	52-44675
3 Gauge - Oil Pressure, Water Temperature, Volt, TACH	52-44676
4 Gauge - Oil Pressure, Water Temperature, Oil Temperature, Fuel Pressure-15 psi, TACH	52-44677
4 Gauge - Oil Pressure, Water Temperature, Fuel Pressure-15 psi, Water Pressure, TACH	52-44678
4 Gauge - Oil Pressure, Water Temperature, Fuel Pressure-15 psi, Volt, TACH	52-44679
5 Gauge - Oil Pressure, Water Temperature, Fuel Pressure-15 psi, Oil Temperature, TACH	52-44680
5 Gauge - Oil Pressure, Water Temperature, Fuel Pressure-15 psi, Water Pressure, Volt, TACH	52-44681

SMi™ Elite Waterproof Gauges



NEW!

GAUGES WITH SENSOR	PART #
Oil Pressure 0-120 psi	52-46741
Fuel Pressure 0-15 psi	52-46742
Fuel Pressure 0-120 psi	52-46743
Water Temperature / Oil Temperature 100-280°F	52-46744
Water Temperature / Oil Temperature 100-340°F	52-46745
Volt gauge 8-18 VOLT	52-46746
Tachometer 2-5/8"	52-46747
Water Pressure 0-60 psi	52-46748

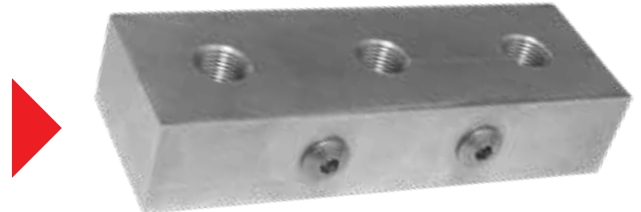


Available with or without sensors.

GAUGES ONLY	PART #
Oil Pressure 0-120 psi	52-46749
Fuel Pressure 0-15 psi	52-46750
Fuel Pressure 0-120 psi	52-46751
Water Temperature / Oil Temperature 100-280°F	52-46752
Water Temperature / Oil Temperature 100-340°F	52-46753
Water Pressure 0-60 psi	52-46756

PRESSURE SENSOR FIREWALL MOUNTS FOR SMi™ WATERPROOF GAUGES

MUST BE USED FOR WARRANTY WITH LED AND SMi™ GAUGES!



Isolates sensors to eliminate engine vibrations. Available with 1, 2, and 3 ports. Allows for remote mounting sensors away from heat. Allows remote mounting for applications where the engine is far from the drivers compartment.

DESCRIPTION	PART #
1 Port Sensor Mount	52-43540
2 Port Sensor Mount	52-43541
3 Port Sensor Mount	52-43542

NEW!

SMi™ Elite

WATERPROOF ALUMINUM PANELS

- New waterproof design eliminates the need to remove gauges before you wash your car.
- LED backlit numbers and illuminated pointers.
- Custom set your warnings and brightness.
- Backlight changes color based on the warning.
- Panels are completely wired and ready for quick installation.
- Many panel combinations available to suit your specific racing needs.
- All sensors are included.
- New 2-5/8" tachometer available with high RPM, average low RPM, and average high RPM recall.
- New water pressure gauge option available.
- Legal in most sanctioning bodies, including IMCA.



Pre-wired and ready to install. Saves time and hassle. Panels are also available with 100 psi fuel pressure and volt meter gauges. Please call for part numbers and pricing.

DESCRIPTION	PART #
2 Gauge - Oil Pressure, Water Temperature	52-44560
3 Gauge - Oil Pressure, Water Temperature, Oil Temperature	52-44561
3 Gauge - Oil Pressure, Water Temperature, Fuel Pressure-15 psi	52-44562
3 Gauge - Oil Pressure, Water Temperature, Fuel Pressure-120 psi	52-44563
3 Gauge - Oil Pressure, Water Temperature, Volt	52-44564
3 Gauge - Oil Pressure, Water Temperature, Water Pressure	52-44565
4 Gauge - Oil Pressure, Water Temperature, Oil Temperature, Fuel Pressure	52-44566
4 Gauge - Oil Pressure, Water Temperature, Oil Temperature, Fuel Pressure-120 psi	52-44567
4 Gauge - Oil Pressure, Water Temperature, Water Pressure, Fuel Pressure	52-44568
4 Gauge - Oil Pressure, Water Temperature, Oil Temperature, Water Pressure	52-44569
5 Gauge - Oil Pressure, Water Temperature, Oil Temperature, Water Pressure, Fuel Pressure.	52-44570
6 Gauge - Oil Pressure, Water Temperature, Oil Temperature, Fuel Pressure, Water Pressure, Volt	52-44571
2 Gauge - Oil Pressure, Water Temperature, 4.5" TACH	52-44572
3 Gauge - Oil Pressure, Water Temperature, Oil Temperature, 4.5" TACH	52-44573
3 Gauge - Oil Pressure, Water Temperature, Fuel Pressure, 4.5" TACH	52-44574
3 Gauge - Oil Pressure, Water Temperature, Water Pressure, TACH	52-44575
3 Gauge - Oil Pressure, Water Temperature, Volt, TACH	52-44576
4 Gauge - Oil Pressure, Water Temperature, Oil Temperature, Fuel Pressure, 4.5" TACH	52-44577
4 Gauge - Oil Pressure, Water Temperature, Fuel Pressure, Water Pressure, TACH	52-44578
5 Gauge - Oil Pressure, Water Temperature, Oil Temperature, Fuel Pressure, Volt	52-44579
5 Gauge - Oil Pressure, Water Temperature, Fuel Pressure, Oil Temperature, Water Pressure, TACH	52-44580
5 Gauge - Oil Pressure, Water Temperature, Fuel Pressure, Water Pressure, Volt, TACH	52-44581
6 Gauge - Oil Pressure, Water Temperature, Fuel Pressure, Oil Temperature, Water Pressure, Volt, TACH	52-44582
2 Gauge - Oil Pressure, Water Temperature, TACH	52-44583
3 Gauge - Oil Pressure, Water Temperature, Oil Temperature, TACH	52-44584
3 Gauge - Oil Pressure, Water Temperature, Fuel Pressure, TACH	52-44585
3 Gauge - Oil Pressure, Water Temperature, Water Pressure, TACH	52-44586
3 Gauge - Oil Pressure, Water Temperature, Volt, TACH	52-44587
4 Gauge - Oil Pressure, Water Temperature, Oil Temperature, Fuel Pressure-15 psi	52-44588
4 Gauge - Oil Pressure, Water Temperature, Oil Temperature, Water Pressure, TACH	52-44589
4 Gauge - Oil Pressure, Water Temperature, Fuel Pressure-15 psi, Volt, TACH	52-44590
5 Gauge - Oil Pressure, Water Temperature, Fuel Pressure-15 psi, Oil Temperature, Water Pressure, TACH	52-44591
5 Gauge - Oil Pressure, Water Temperature, Fuel Pressure-15 psi, Water Pressure. Volt, TACH	52-44592
6 Gauge - Oil Pressure, Water Temperature, Fuel Pressure-15 psi, Oil Temperature, Water Pressure, Volt, TACH	52-44593

NEW!



WATERPROOF TACHS

2-5/8" LED & SMi™ MEMORY TACHS

- LED backlit numbers and illuminated pointers.
- Compact lightweight design.
- Improved larger digital readout.
- Will recall with ignition turned off.
- 100 lap average low and high RPM recall.
- Works with most cylinder combinations.
- Works with 2 stroke or 4 stroke engines
- Reads 0-10,000RPM.

DESCRIPTION	PART #
Digital Elite Tach	52-46863
SMi™ Elite Tach	52-46747



"STEPPER MOTOR" SMi™ 4.5" MEMORY TACHS

- SMi™ AccuTech™ 4.5" Memory Tach.
- Maximum RPM recall.
- LED back light shows through the dial face and the pointer is LED illuminated to make this the easiest tach to read.
- Stepper motor precision tach at an affordable price.
- High RPM Warning light: 2 stage. First warning can be set for just over your normal maximum RPM, the second stage at the redline. You get a warning of too many revs before you blow an engine.
- Can also be used as a 2 stage shift light.

DESCRIPTION	PART #
Tach Only	52-44384
Tach with Panel	52-44477
Silver Face Tach Only	52-44381
Silver Face Tach with Panel	52-44389



DLi™ DATA LOGGING 4" STEPPER MOTOR TACHS

- DLi™ Tach: better than only 3 or 4 highs and lows.
- See all the highs and lows to closely analyze RPM changes.
- Records RPM all around the track. Replay in the pits.
- Playback can be real time, 1/2 speed, or double to see a full lap quickly.
- You can record multiple sessions or just highest RPM if that's all you need.
- Multi-stage progressive shift light for precision shift points or a pit road speed indicator.
- The 2 stage high RPM warning light will help prevent over-revving expensive motors.
- The numbers are LED backlit and the pointer is illuminated for easy reading.

DESCRIPTION	PART #
Tach Only	52-44390
Tach with Panel	52-44479

DIGITAL MEMORY TACH



- Accuracy to within 10 RPM.
- Ultra lightweight only about 1.5 oz.
- Fast response, easy recall.
- High RPM warning light, helps prevent accidental over revving of expensive motors.
- Tach function is self powered.
- Battery lasts 300+ hours, with the option to connect to car's power for back light and warning light.
- Includes mounting bracket.

DESCRIPTION	PART #
0 - 10,000 RPM Digital Memory Tach	52-44391
0 - 19,000 RPM Digital Memory Tach	52-44402



GAUGE LINES STEEL BRAIDED

- SS braided Teflon lines.
- Can be removed and replaced over again without breaking or leaking.



Use with Pressure Firewall Mounts (right).

DESCRIPTION	PART #
24" With Block Fitting	52-45020
36" With Block Fitting	52-45030
48" With Block Fitting	52-45040
60" With Block Fitting	52-45050



PRESSURE SENSOR FIREWALL MOUNTS FOR SMi™ WATERPROOF GAUGES

Isolates sensors to eliminate engine vibrations.

MUST BE USED FOR WARRANTY WITH LED AND SMi™ GAUGES!

DESCRIPTION	PART #
1 Port Sensor Mount	52-43540
2 Port Sensor Mount	52-43541
3 Port Sensor Mount	52-43542



ADDITIONAL MANIFOLD SPARE MOTOR FITTINGS FOR TEMP GAUGES

For AccuTech™(Sportsman™ and SMi™) and most other major brands of water and oil temperature gauges.



DESCRIPTION	PART #
1/2" NPT Manifold Fitting	52-46150
3/8" NPT Manifold Fitting	52-46160
1/4" NPT Manifold Fitting	52-46181



EXTRA SMi™ SENSORS FOR YOUR SPARE MOTORS

Sensors are included with all SMi™ panels.

DESCRIPTION	PART #
0-100 psi Oil or Fuel Pressure	52-43520
0-60 Water Press, 0-15 Fuel Press	52-43510
100-280° Water or Oil Temperature	52-43500
100-340° Water or Oil Temperature	52-43505



BLOCK FITTINGS FOR OP & FP GAUGES

DESCRIPTION	PART #
1/8" NPT to #4 AN Straight Oil Pressure Block Fitting	52-45240
1/8" NPT to #4 AN 90° Oil Pressure Block Fitting	52-45230



STEPPER MOTOR TACHOMETER FILTER

DESCRIPTION	PART #
'Stepper Motor' Tachometer Filter	52-44410



WATERPROOF WIRE HARNESS

DESCRIPTION	PART #
WP SMi™ Voltage	52-43533WR
LED Voltage	52-43533LED
WP SMi™ OP	52-43534WR
LED OP	52-43534LED
SMi™ WT/OT	52-43536WR
LED WT/OT	52-43536LED
SMi™ FP/WP	52-43532WR
LED FP/WP	52-43532LED
SMi™ Tach	52-43538WR
LED Tach	52-43538LED



NON-WATER RESISTANT SMi™ WIRE HARNESS

DESCRIPTION	PART #
Wire Harness - SMi™ VOLT Gauge	52-43533
Wire Harness - OP Gauge	52-43534
Wire Harness - WT/OT Gauge	52-43536
Wire Harness - FP Gauge	52-43532
Wire Harness - DLi Tac	52-43539
Wire Harness - Memory Tach	52-43538
SMi™ Press Sensor Wire- FP/OP	52-43530

SPORTSMAN™ GAUGES

- Quality built mechanical racing gauges.
- Solid brass CNC machined gears.
- Viscous damped pointers for steady readings.
- Gauges come complete with back lights, temperature manifold fittings, and brackets.

DESCRIPTION	PART #
Oil Pressure 1-100 psi	52-46511
Fuel Pressure 0-15 psi	52-46506
Water Temperature 100°-280°	52-46516
Oil Temperature 100°-340°	52-46521



52-46511
Oil Pressure 0-100 psi



52-46506
Fuel Pressure 0-15 psi



52-46516
Water Temp. 100°-280°



52-46521
Oil Temp. 100°-340°

ALUMINUM PANELS WITH SMi™ STEPPER MOTOR MEMORY TACHS

SPORTSMAN™ MECHANICAL GAUGES

- Maximum RPM recall. Just push the "Recall" button.
- High RPM warning light helps prevent over-revving expensive motors.
- Tach has LED back light, shows through the dial face, and the pointer is LED illuminated.
- Sportsman™ gauges are pre-wired and come with warning lights and all senders.



DESCRIPTION	PART #
2 Gauge Oil Pressure, Water Temperature	52-44440
3 Gauge Oil Pressure, Water Temperature, Oil Temperature	52-44441
3 Gauge Oil Pressure, Water Temperature, Fuel Pressure	52-44443
4 Gauge Oil Pressure, Water Temperature, Oil Temperature, Fuel Pressure	52-44445

ALUMINUM PANELS

SPORTSMAN™ MECHANICAL GAUGES

- Gauges have viscous-damped pointers for steady readings.
- Gauge mechanism uses solid brass CNC machined gears.
- Panels are pre-wired, ready to install, and have all senders.



Wiring is premium fine strand with high temperature silicone insulation, soldered and heat shrunk terminals.

DESCRIPTION	PART #
2 Gauge Oil Pressure, Water Temperature	52-44430
3 Gauge Oil Pressure, Water Temperature, Oil Temperature	52-44431
3 Gauge Oil Pressure, Water Temperature, Fuel Pressure	52-44433
4 Gauge Oil Pressure, Water Temperature, Oil Temperature, Fuel Pressure	52-44435



SPRINT CAR GAUGE PANEL DESIGNED TO STAY WITH MOTOR

- Genuine carbon fiber panel with durable Longacre® Sportsman™ Gauges with shock reducing rubber mounting “O” rings and genuine carbon fiber panel.
- Includes mag kill switch and low oil pressure warning light (9 volt battery powered), 52-44423 only.
- Mounts from engine side of firewall, attach with Dzus™ fasteners, permanently mount.

DESCRIPTION	PART #
Sprint Car Panel	52-44423
Sprint Car Panel Without Light/Switch	52-44421



LIQUID FILLED BRAKE BIAS BLACK ALUMINUM PANELS MINI & FULL SIZED

- Mini panel includes two 1.5" 1500 psi gauges and fittings with bleeders.
- Full size panel includes two 2.5" 1500 psi gauges and fittings with bleeders.
- See exactly what your balance is.
- Liquid Filled Gauges are not filled to the top.

DESCRIPTION	PART #
Full Size Brake Bias Panel	52-44134
Mini Brake Bias Panel	52-44124

GENUINE CARBON FIBER SWITCH PANELS



- High capacity 40 amp switches (at 12 volts) with rubber switch boots to seal out moisture.
- Red safety flip-up switch covers.
- High insulation wiring with soldered terminals.

DESCRIPTION	PART #
Ignition & Start	52-44510
Ignition, Start & 2 Accessory Switches	52-44535

BOLT-ON SWITCH PANEL MOUNTING BRACKETS



- Mount your switch panel quickly and easily. Switch panels only, not for battery disconnect or gauge panels.
- Includes 2 brackets.

DESCRIPTION	PART #
1-1/3" Bar	52-22783
1-1/2" Bar-Universal	52-22787

HEAVY DUTY WIRING HARNESS



- Plugs into all Longacre® switch panels.
- Color coded wires match Longacre® dash panels.

DESCRIPTION	PART #
Heavy Duty Wiring Harness	52-44930

BLACK ALUMINUM SWITCH PANELS

START/IGNITION PANELS

- High capacity (40 amp @ 12 volts DC) ignition switch and starter button with weatherproof covers.
- Great-looking aluminum panel - black anodized with clean, modern graphics.
- Pre-wired with high insulation "Fat" wires and soldered terminals with heat shrunk connections.
- Plugs into Longacre® wiring harness.

DESCRIPTION	PART #
Start/Ignition Panel	52-44861
Start/Ignition Panel with Flip-Up Safety Cover & Pilot Light	52-44863



52-44861



52-44863



All of our switch panels use 12 Volt HD 40 amp ignition switches, HD start buttons, and high capacity wire with soldered and heat-shrunk terminals. They are pre-wired and ready to install.

Most of these switch panels include an optional weatherproof switch cover if you prefer that style. Easy to change.

DESCRIPTION	PART #
Start/Ign. Panel: Flip-Up Safety Cover, 4 Acc. Switches & Pilot Lights	52-44869
Start/Ign. Panel: Flip-Up Safety Cover, 1 Acc. Switch & Pilot Lights	52-44866
Start/Ign. Panel: Flip-Up Safety Cover, 2 Acc. Switches & Pilot Lights	52-44867
Start/Ign./ Master Disconnect Panel: Flip-Up Safety Cover & Pilot Light	52-44871
Battery Disconnect Panel Switch 2 Post	52-45760
Battery Disconnect Panel Switch 4 Post Altn.	52-45784
Panel With 4 Acc. Switches & Pilot Lights	52-44865



52-44869



52-44866



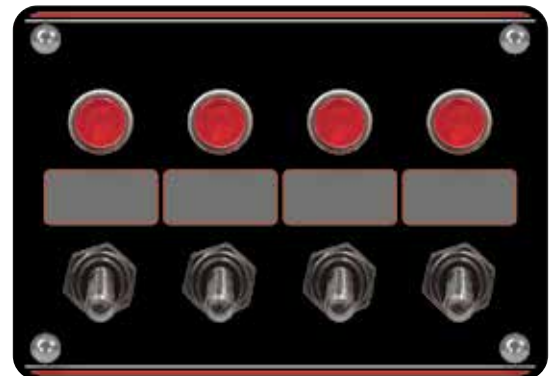
52-44867



52-44871



52-45760



52-44865

HEAVY DUTY 40 AMP SWITCHES

- SILVER PLATED CONTACTS.
- SOLID BRASS MECHANISMS.
- TOUGH PHENOLIC BODIES.

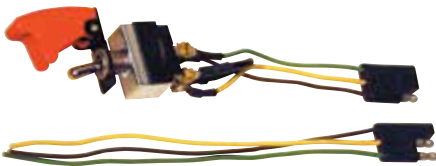
IGNITION SWITCH



With silicone rubber weatherproof switch cover and 2 terminals.

DESCRIPTION	PART #
Switch, Cover, Terminals	52-45420
Weatherproof Switch	52-45423
3 Terminal Switch	52-45430
Momentary Toggle Start	52-45462

IGNITION/START SWITCH COMBINATION



- Pre-wired with color coded harness and flip-up switch cover.
- 1 Switch does it all.
- Down is off.
- Middle is ignition on.
- Up is momentary start

DESCRIPTION	PART #
Ignition/Start Switch Combo	52-45490

REPLACEMENT COVERS



DESCRIPTION	PART #
Black Weatherproof Cover	52-45300
Red Flip-Up Safety Cover	52-45370

IGNITION SWITCH WITH FLIP-UP COVER



- Shut off quickly in an emergency like a stuck throttle.
- Prevents accidental turn on of ignition.

DESCRIPTION	PART #
HD Switch, Safety Cover, Terminals	52-45470

MAGNETO SWITCH



- 2 Circuits that kill mag and shut-off accessories.
- Weatherproof cover.

DESCRIPTION	PART #
Switch & Cover	52-45440

STARTER BUTTON



Push Button with weather proof rubber cover and 2 terminals.

DESCRIPTION	PART #
Starter Button	52-45460

STARTER SOLENOID KIT WITH FIREWALL STARTER BUTTON



- High capacity extra heavy duty metal cased solenoid, wiring harness, and remote starter button.
- Remote start button is great for setting valves, etc.

DESCRIPTION	PART #
Complete Kit	52-45800
Complete Kit with Waterproof Start Button	52-45803
Solenoid Only	52-45900

BATTERY DISCONNECT SWITCHES

- Battery disconnect switches with a bright red handle.
- Easier to find in an emergency.
- Prevents battery drain.
- 175 Amp Continuous Rating, 6-36 Volt, 1000 Amps peak alternator circuit 20 amps. (Except 52-45782, 125 amps.)



52-45749



52-45748



52-45750
52-45780



52-45782

DESCRIPTION

DESCRIPTION	PART #
2 Terminal for Cars without Alternator in Aluminum Panel	52-45760
4 Terminal for Cars with or without Alternator in Aluminum Panel - Alternator Circuit 20 Amps	52-45784
4 Terminal Extra High Capacity - Alternator Circuit 125 Amps with Panel	52-45783
2 Terminal for Cars without Alternator - Switch Only	52-45750
4 Terminal for Cars with or without Alternator - Switch Only, Alternator Circuit 20 Amps Max	52-45780
2 Terminal Push-Pull - Switch Only, Shut Off Entire Electrical System in an Emergency with a Quick 'Hit'	52-45749
Economy Battery Disconnect Switch - Switch Only	52-45748
4 Terminal, Extra High Capacity - Alternator Circuit Carries 125 Amps, Battery Circuit 175 Amps Cont.- Switch Only*	52-45782

*Needed for cars using very high capacity alternators.

WEATHERPROOF SWITCHES

SEALED WITH TOUGH POLYMER COATING

DESCRIPTION	PART #
Battery Disc., Weatherproof 2 Terminal with Panel	52-45754
Battery Disc., Weatherproof 4 Terminal with Panel, Alternator 20 amps MAX	52-45792
Extra High Capacity Weatherproof 4 Terminal with Panel	52-45791
HD 40 amp Ignition Switch	52-45423
Starter Button	52-45466
Battery Disconnect 2 Terminal	52-45753
Battery Disconnect 4 Terminal - Alternator 20 amps MAX	52-45788
Extra High Capacity Battery Disconnect 4 Terminal	52-45789



BATTERY ACCESSORIES

DESCRIPTION	PART #
Remote Battery Positive (Red)	52-45720
Remote Battery Negative (Black)	52-45740
2 Battery Cable Ends	52-45660
Battery Through Panel	52-45700
Universal Battery Terminal	52-45680



- Makes it easier to jump start or charge the battery.
- Color coded protective boot.



- For safely running battery cable through your firewall.
- Prevents shorts.





WEATHER PACK CONNECTOR KITS

- Seals out dirt and water.

DESCRIPTION	PART #
1 Pin	52-44911
2 Pin	52-44912
3 Pin	52-44913
4 Pin	52-44914
6 Pin	52-44916
Weather Pack Replacement M/F Pins and Seals (10 Each)	52-44919



WEATHER PACK CRIMP TOOL WITH CRIMP DIES

- Use with Weather Pack connector kits.
- Ratchet style crimper insures a positive connection.
- Fast and easy.

DESCRIPTION	PART #
Crimp Tool & Dies	52-44905



REAR BATTERY CABLE KIT

- Ends are factory soldered and include an extra terminal just in case you need to change the length.
- Kit includes high amp battery cable, end terminals, color coded terminal boots to prevent arcing, Firebraided™ insulation, firewall grommet, Adel™ clamps, and wire ties.
- The longer your battery cables are, the heavier gauge they need to be.

DESCRIPTION	PART #
13' 1/0 Cable, Battery Behind Differential	52-48050
10' #2 Cable, Battery Behind Driver	52-48000



DELUXE BATTERY CABLE KIT

- Includes solenoid and battery disconnect switch.
- Ends are factory soldered for quick, simple installation.
- Includes ground cable and all cables from battery to switch.
- Starter cable heat protected with Firebraided™.

DESCRIPTION	PART #
Deluxe Battery Cable Kit	52-48115

ADEL™ LINE CLAMPS



- High temperature neoprene lining makes a neat and safe installation.
- Keeps lines and wiring where they belong.

DESCRIPTION	PART #
3/16" ID Steel Brake Lines - 10 Pack	52-47000
3/16" ID Steel Brake Lines - 100 Pack	52-47050
5/16" ID #4 An Lines - 10 Pack	52-47100
5/16" ID #4 An Lines - 100 Pack	52-47150
9/16" ID Fuel Line - 10 Pack	52-47200
9/16" ID Fuel Line - 100 Pack	52-47250
13/16" ID #8 An Line - 10 Pack	52-47300
13/16" ID #8 An Line - 100 Pack	52-47350
15/16" ID #10 & 12 Lines - 10 Pack	52-47400
15/16" ID #10 & 12 Lines - 100 Pack	52-47450
1-3/16" ID #16 An Lines - 10	52-47500

PIN EXTRACTION TOOL



Required for safe removal of pins from Weather Pack housing.

DESCRIPTION	PART #
Pin Extraction Tool	52-44909

GROUND STRAP HEAVY DUTY



Braided 14" long to complete the installation.

DESCRIPTION	PART #
Ground Strap Heavy Duty	52-48110

110V FLANGE MOUNT CONNECTION



Great for dry sump oil heaters.

DESCRIPTION	PART #
110V Flange Mount Connection	52-45662

GAGELITES™

ENGINE WARNING LIGHT SYSTEMS

DESCRIPTION	COMPLETE KIT PART #	SENDER ONLY PART #
20 psi Oil Pressure 1/8" NPT	52-40000	52-43080
15-50 psi Oil Pressure 1/8" NPT	52-40100	52-43000
230° Water Temperature 1/2" NPT	52-40150	52-43250
230° Water Temperature 3/8" NPT	52-40152	52-43252
250° Water Temperature 1/2" NPT	-	52-43300
270° Oil Temperature 1/2" NPT	52-40350	52-43350
300° Oil Temperature 3/8" NPT	52-40400	52-43400
2-7 psi adj. Fuel Pressure 1/8" NPT	52-40250	52-43020
4 psi Fuel Pressure 1/8" NPT	52-40251	52-43021

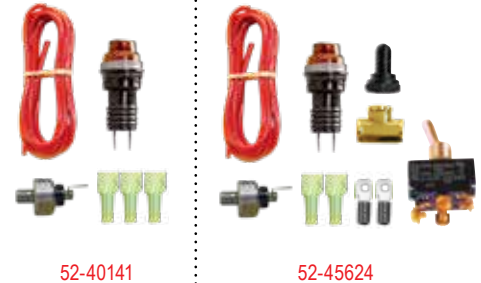


Kit includes sender, light, wire, and terminals.

WARNING LIGHT KITS WATER & LOW OIL PRESSURE

- WP Kit: Light comes on if you have sudden loss of coolant pressure.
- WP Kit: Alerts you to a punctured radiator or burst hose, helps prevent expensive engine damage.
- OP Kit: For cars without batteries.
- OP Kit: Includes holder for lightweight 9V battery (not included), low oil pressure switch (20 psi), warning light, heavy duty mag kill switch with weatherproof switch cover, wire, and terminals.

DESCRIPTION	PART #
Water Pressure Warning Light Kit	52-40141
Water Pressure Warning Light Kit - Sender Only	52-43241
Low Oil Pressure Warning Light Kit	52-45624



REPLACEMENT LIGHT ASSEMBLIES

New brighter design same as on panels (install in 3/4" hole).



DESCRIPTION	PART #
Clear	52-41801
Red	52-41802
Amber	52-41803
Green	52-41804
Blue	52-41805

SWITCH PANEL PILOT LIGHT REPLACEMENT

DESCRIPTION	PART #
Pilot Light Replacement	52-42300



LOW OIL PRESSURE IGNITION OR ELECTRIC FUEL PUMP SHUTOFF SWITCH

- Switch shuts off the ignition or electric fuel pump when oil pressure drops below 12 psi.
- Helps prevent engine damage or fire and keeps the motor from starting until the oil pressure is up.
- Should be used with momentary bypass switch for starting.



DESCRIPTION	PART #
Switch	52-43600
Momentary Bypass Switch	52-45462

Temperature and barometric pressure.



Comes with hard case.

Baseline air density and difference.



DIGITAL AIR DENSITY GAUGE

- Accurate electronic air density measurement with easy-to-read digital display.
- Shows your baseline so you don't forget.
- A red LED flashes to let you know if you need to change jets (air density has changed since baseline.)
- Also displays current temp and barometric pressure.

DESCRIPTION	PART #
Digital Air Density Gauge	52-50887

COIL-OVER WRENCH BILLET ALUMINUM



- Billet aluminum keeps coil-overs undamaged.
- Replaceable stainless steel pin.
- Comfortable handle with rounded edges makes adjustments easy.

DESCRIPTION	PART #
Coil-Over Wrench	52-22589

OIL FILTER CUTTER BILLET ALUMINUM



- Billet anodized aluminum, ball bearings.
- Cuts smaller filters too, from 2-3/8" to 4-3/4" in diameter.
- Cut your old filter open to spot problems before they cost you an engine.

DESCRIPTION	PART #
Oil Filter Cutter	52-77750

ENGINE LEAK DOWN TESTER

DIAL MODEL

- Easy-to-use tester checks ring seal, valves, and head gaskets.
- Quickly tell from the outside when your engine needs an overhaul.

DESCRIPTION	PART #
With 14 mm Spark Plug Fitting	52-73010
With 12 mm Spark Plug Fitting	52-73011
14 mm Replacement Hose for Leak Down Tester	52-73012
12 mm Replacement Hose for Leak Down Tester	52-73013
Barrel Valve Setting Tool	52-73016
Barrel Valve Setting Tool Replacement Hose	52-73017



LEAK DOWN TESTER

DIGITAL

- Much more accurate than traditional testers.
- Reads critical leak down to 0.5% (0.5 of 1%).
- Gauges have back lights for easy readability and low battery indicators.
- 14mm Spark plug connector included (12 mm and barrel valve available.)
- Control inlet valve avoids shock to gauges when air is turned on, allowing more accurate readings, easier use, and longer gauge life.

DESCRIPTION	PART #
Tester with Hard Case	52-73014
Tester with 12 mm Fitting	52-73015



DIGITAL SHOCK INFLATORS

- Easy to read and use with controlled flow valves.
- 300 psi Digital gauge easily reads to 0.5 psi.
- Controlled flow inlet and bleed valves makes precision shock settings much easier.
- Special chuck prevents pressure loss and inaccurate settings.
- Extra long hose makes filling shocks on car a snap.
- Fill and bleed quickly and accurately.
- Inlet valve prevents air contamination when not in use, connect directly to nitrogen line.

DESCRIPTION	PART #
Digital Shock Inflator	52-50473



BASIC SHOCK INFLATORS

DIAL MODEL & DIGITAL

- Both models read to 300 psi by 0.5 psi units.
- Digital model includes special chuck that prevents pressure loss.

DESCRIPTION	PART #
Dial Model Shock Inflator	52-50493
Digital Model Shock Inflator	52-50483





AccuLevel™ DIGITAL LEVELS PRO MODEL

- Back light for dark places under car.
- Measure suspension and spoiler angles.
- Includes hard case.
- Reads to 0.1° (1/10°) – from 0 to 90°.
- Simple to use, easy to read, accurate.
- Can be field calibrated to maintain accuracy.
- Used in our Digital Caster/Camber gauges.



DESCRIPTION	PART #
Pro Model AccuLevel™ Digital Level	52-78311



AccuLevel™ DIGITAL LEVELS BASIC MODEL

- Measure suspension and spoiler angles and lots more.
- Reads to 0.1° +/- from 0 to 90°.
- Simple to use, easy to read, accurate.
- Can be quickly field calibrated to maintain accuracy.

DESCRIPTION	PART #
Basic Model AccuLevel™ Digital Level	52-78310



CNC IMPACT SOCKETS

- ½" Drive impact grade sockets for 1" lug nuts.
- CNC Machined from SAE 4340 alloy billet.
- Double heat treated for severe service.
- Special machined socket grabs the flats and instantly kicks out the lug nuts for ultra fast pit stops.



DESCRIPTION	PART #
CNC Impact Short Socket 2 ¼" L	52-68525

SAFETY WIRE PLIERS

- Ensures parts stay on your car.
- Quickly and neatly twists wire.
- A must for all high vibration locations.



DESCRIPTION	PART #
Safety Wire Pliers	52-22598

SAFETY WIRE

- 0.032 Stainless steel wire.



DESCRIPTION	PART #
Safety Wire	52-22599

PLUMB BOB KIT

- Square rear end.



DESCRIPTION	PART #
Plumb Bob Kit	52-50820

HOT SLEEVE

- Protects arms from burns while working around engine.
- Made of Kevlar®.
- Right or left arm.
- Washable.



DESCRIPTION	PART #
Single Sleeve	52-11230



3 Hole 5/16" x 1-3/4"

ALUMINUM SPOKES WITH SMOOTH & BUMP GRIP

- These wheels have a high grip polyurethane coating.

DESCRIPTION	PART #
15" Black – Smooth Grip – Dished (2.75")	52-56801
15" Blue – Smooth Grip – Dished (2.75")	52-56803
15" Red – Smooth Grip – Dished (2.75")	52-56805
17" Black – Smooth Grip – Dished (2.75")	52-56811
15" Black – Bump Grip – Dished (2.75")	52-56820
17" Black – Bump Grip – Dished (2.75")	52-56825



ALUMINUM WHEEL "FAT" GRIP

- Thicker rim for a better grip and less wrist and arm strain.
- Ideal size for long races.
- 15" Dished aluminum wheel.

DESCRIPTION	PART #
15" Black – Smooth Grip – Dished (2.75")	52-56809



STEEL WHEELS

- Where steel wheels are required.
- Smooth Grip-Dished 2.75".

DESCRIPTION	PART #
15" Steel Wheel - Black Smooth Grip	52-56841
17" Steel Wheel - Black Smooth Grip	52-56851

PRO ALUMINUM STEERING WHEELS WITH SUEDE WRAPPED RIM

- Suede gives you an excellent grip for better car control plus reduced wrist and arm strain during the race.
- Lightweight 2.3 lbs.
- Can be easily cleaned.
- 15" with 2.5" dish.
- Std. 3 bolt mounting (5/16" x 1-3/4")
- Center has CNC machined beveled edges.
- Red stripe on the rim at the top indicating 'straight ahead'.



DESCRIPTION	PART #
Suede Dished Steering Wheel - 15" Black Center	52-56797
Suede Dished Steering Wheel - 15" Natural Center	52-56800

ULTRA LIGHTWEIGHT ALUMINUM STEERING WHEELS DRILLED OR UNDRILLED

- These drilled wheels are half the weight of other brands.
- Drilled on 2 sides for additional weight savings.
- Shot peened rim for good grip.
- Holes give even better grip.

DRILLED	PART #
15" Uncoated Black – Dished (2.5")	52-56838
15" Uncoated Aluminum – Dished (2.5")	52-56837
15" Uncoated Black – Flat	52-56867
15" Uncoated Aluminum – Flat	52-56866
14" Uncoated Black – Dished (2.5")	52-56833
14" Uncoated Aluminum – Dished (2.5")	52-56835

UNDRILLED	PART #
15" Uncoated Aluminum – Smooth – Dished (2.5")	52-56836
15" Uncoated Aluminum with Bumps – Dished (2.5")	52-56822
14" Uncoated Aluminum – Smooth – Dished (2.5")	52-56834





All hubs and spuds include a second safety groove for your protection.

STEERING WHEEL QUICK DISCONNECT SPLINED

Any play in the steering, including the hub, takes away control from the driver, letting the car 'wander around'. This Pro hub has a precision machined 4130 spud and a T6 Hard Anodized splined hub for a super tight fit, yet is easy to remove and install. Plus, there are multiple sets of mounting holes so you can 'clock' your wheel 3 times closer. For safety, there are 2 sets of retaining grooves. If you don't get the ring engaged, it will catch on the second safety groove rather than come off on the track. The steel spuds can be installed on either 3/4" or 5/8" shafts. Splined hub – pull ring release with double safety grooves on weld-on SAE 4130 spud.

DESCRIPTION	PART #
Precision Fit Splined Hub	52-56605



3 Hole 5/16" x 1-3/4"

STEERING WHEEL QUICK DISCONNECTS HEX PUSH BUTTON

- Hex type.
- Aluminum hub.
- Weld to 3/4" or 5/8" (karts) steering shafts.
- Double safety grooves.

DESCRIPTION	PART #
Hex Hub – Push Button Release	52-56600



STEERING WHEEL HOOK

- Hang your wheel out of the way.
- Bolts onto roll bar with no welding required.

DESCRIPTION	PART #
1-3/4" Roll Bar Size	52-22576
1-1/2" Roll Bar Size	52-22577



STEERING WHEEL NOSE PAD

- Required by most rules.
- Medium density.
- Product is 6 inches in diameter.

DESCRIPTION	PART #
Nose Pad	52-56899

GPS TRIGGERED IN-CAR TIMER

- This in-car timing system lets the driver see their lap times as they happen. Try different lines around the track to instantly find the fastest way. The GPS replaces the IR beam.
- Track mapping: divide the track into timed segments and see where you are fast and where you are losing time.
- Recall segment times in pits and compare laps.
- 3" Backlit graphic display.



GPS sensor mounts in car.



HOT LAP™ GPS

DESCRIPTION	PART #
Hot Lap™ GPS Triggered In-Car Timer	52-21730

STOPWATCHES

ROBIC™

Robic™ SC 606W

- Clocks every lap.
- Computes average MPH.
- Counts laps to 999.
- 50 Lap memory.

Robic™ SC 505W

- Time every lap plus automatic lap count.
- 12 Memory recall.
- One button action for simple timing.

DESCRIPTION	PART #
Robic™ SC 606W Stopwatch	52-22172
Robic™ SC 505W Stopwatch	52-22168



STOPWATCH CLIPBOARDS

- Lightweight aluminum won't break like plastic can.
- Powder coat finish with edge protectors.
- Professional color lap charts included with practice times on back.
- Rubber feet prevent sliding and protect car's finish.

DESCRIPTION	PART #
2 Car Stopwatch Clipboard w/ Robic™ SC 505W	52-22324
1 Car Stopwatch Clipboard w/ Robic™ SC 606W	52-22319
2 Car Stopwatch Clipboard w/ Robic™ SC 606W	52-22321
Clipboard Only	52-22314

2 Watch Economy Clipboard With Robic™ SC 505W Watches
Times every lap, counts laps, and has 5 lap memory.

Clipboards With Robic™ SC 606W Watches
These watches clock every lap, show average MPH, and have a 50 lap dual memory.



LAP TIMES/ CHASSIS SHEETS

DESCRIPTION	PART #
Chassis Setup – 1 Pad/50 Sheets	52-22528

- Lap times - practice times on back.
- Chassis setup sheets - tire temps on back.
- Punched for 3 ring binder.
- 2 Sided – Get added use.





SFIT™ EMBOSSED ROLL BAR PADDING

3' BLACK

- Provides maximum in energy absorption and flame retardation and will not drip or melt in a fire.
- Required in NHRA®, SCCA®, and recommended in NASCAR®.
- Meets new SFIT™ spec 45.1.
- Pre-taped for easy installation.
- Fits bars 1-1/2" to 1-3/4" x 36" length.

DESCRIPTION
SFIT™ Embossed Roll Bar Padding 3' Black

PART #
52-65169



HIGH DENSITY ROLL BAR PADDING REGULAR & "MINI" SIZE

- Provides maximum in energy absorption and flame retardation.
- Will not drip or melt in fire.
- Fits bars for 1-1/2" to 1-3/4".
- Self-adhesive (pre-taped) for a quick and clean installation.
- "Mini" padding has a streamlined shape to focus padding where you need it, improve sightlines and reduce blind spots.



"MINI" PADDING



REGULAR SIZE

All Longacre® HD padding is "pre taped" with adhesive to make installation easier.

DESCRIPTION

Black - High Density Roll Bar Padding – 3'	52-65162
Blue - High Density Roll Bar Padding – 3'	52-65164
Red - High Density Roll Bar Padding – 3'	52-65166
Black - HD Mini Roll Bar Padding – 3'	52-65182
Blue - HD Mini Roll Bar Padding – 3'	52-65183
Red - HD Mini Roll Bar Padding – 3'	52-65184

PART #



ROLL BAR PADDING PROTECTO 180™ MEDIUM DENSITY

- New 180° Design: don't pad the back of your roll bars.
- Easier to install - use wire ties or tape.
- For 1-3/8" to 1-3/4" bars.
- 1-1/8" Thick at top x 36".



DESCRIPTION	PART #
Black ProTecto 180™ Medium Density Roll Bar Padding	52-65692

ROLL BAR PADDING KITS BLACK TAPED

All the padding needed to do most cars in a convenient package. You get a combination of high density full size padding for around your head. Mini HD padding for posts where line-of-sight is important, and new ProTecto 180™ for arm and leg protection.

Kit includes:

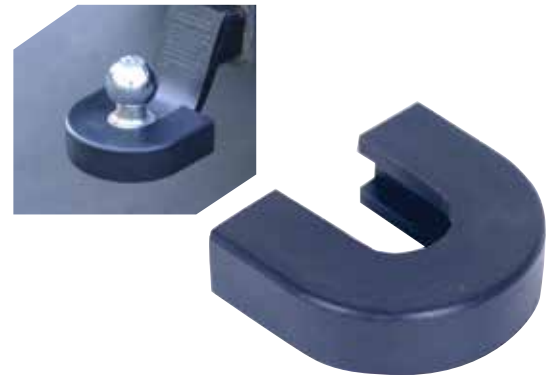
- 2) Full size high density pad.
- 2) Mini high density.
- 4) New ProTecto 180™.



DESCRIPTION	PART #
Roll Bar Padding Kit - Black Taped	52-65135

TRAILER HITCH PAD

- Uses material similar to our high density roll bar padding for good protection.
- Easy to install without removing the ball - takes less than 1 minute.
- Doesn't interfere with normal trailer use.
- Fits most hitches with no modification (many others with only slight modification.)
- Held on with wire ties (included.)



DESCRIPTION	PART #
Trailer Hitch Pad	52-65885

DOOR BAR PADDING MAT

- Protect your left elbow, arm, hand, and wrist.
- Made from fire resistant padding similar to our high density roll bar padding but slightly softer.
- Saves you tons of time, no need to cut and fit several separate pieces.
- Mounts quickly with adjustable molded-in straps.
- Sharp-looking with a clean appearance.
- Size: 39-1/2" x 16-1/2" x 1" thick.



DESCRIPTION	PART #
Door Bar Padding Mat	52-65130



COMPACT RADIO BOX

- For the latest small radios.
- 2 Velcro straps hold the radio securely in place.
- Internal padding prevents damage.
- 3 Sided for easy access.
- Adjustable brackets mount to your roll-bar at multiple angles - Easier to install!
- Available for 1-3/4" or 1-1/2" bar.

DESCRIPTION	PART #
1-3/4" Compact Radio Box	52-22560
1-1/2" Compact Radio Box	52-22562

DRINK HOLDER



- Large capacity insulated bottle with tube.
- Includes "bite valve" to avoid leaks from tube.
- Bolts onto your roll bar - no welding required.
- Powder coated with anodized bracket.

DESCRIPTION	PART #
1-3/4" Drink Holder	52-22551
1-1/2" Drink Holder	52-22553
Drink Bottle and Hose Only	52-22556
Drink Bottle Replacement Hose Only	52-22552

ADJUSTABLE BRACKETS MOUNT AT MULTIPLE ANGLES, EASIER TO INSTALL, & NO WELDING!



UNIVERSAL SWITCH PANEL BRACKET

- Mount your switch panel quickly and easily.
- Lightweight aluminum.
- Includes 2 brackets.

DESCRIPTION	PART #
1-3/4" Switch Panel Bracket	52-22783
1-1/2" Switch Panel Bracket	52-22787



HELMET HOOK

- Protect your helmet.
- Bolts onto roll bar - no welding.
- Lightweight billet aluminum - black anodized.

DESCRIPTION	PART #
1-3/4" Helmet Hook	52-22570
1-1/2" Helmet Hook	52-22572



UNIVERSAL BRACKET

- Mount mirror, switch panel, etc.
- Lightweight aluminum.
- Bolts onto your roll bar.

DESCRIPTION	PART #
1-3/4" Short Universal Bracket	52-22755
1-1/2" Short Universal Bracket	52-22757

WIDE ANGLE MIRROR KITS

- You can quickly and easily add a wide angle racing mirror to your race car with one of our mirror kits.
- These mirrors come with bolt on brackets made of anodized black billet aluminum.
- Longacre® rear view mirrors fasten onto your roll cage in seconds and won't vibrate loose.
- Mirror brackets available in two lengths of adjustment to fit 1-1/2" or 1-3/4" roll bars.



Short Brackets: 1/2" to 2-1/2" Range
Long Brackets: 2" to 5-1/2" Range

DESCRIPTION	PART #
14" Wide Angle Mirror Kit - Short Brackets - 1-1/2"	52-22535
14" Wide Angle Mirror Kit - Long Brackets - 1-1/2"	52-22537
14" Wide Angle Mirror Kit - Short Brackets - 1-3/4"	52-22534
14" Wide Angle Mirror Kit - Long Brackets - 1-3/4"	52-22536
17" Wide Angle Mirror Kit - Short Brackets - 1-1/2"	52-22531
17" Wide Angle Mirror Kit - Long Brackets - 1-1/2"	52-22533
17" Wide Angle Mirror Kit - Short Brackets - 1-3/4"	52-22530
17" Wide Angle Mirror Kit - Long Brackets - 1-3/4"	52-22532
14" Wide Angle Replacement Mirrors	52-22544
17" Wide Angle Replacement Mirrors	52-22547

SPOT MIRRORS

CLAMP ON

- 3-3/4" Spot Mirror with bracket for 1-3/4" or 1-1/2" roll bar.
- Adjusts easily.
- Mounts on driver's side or passenger's side.
- Bolts in place solidly.

DESCRIPTION	PART #
Spot Mirror 1-3/4"	52-22548
Spot Mirror 1-1/2"	52-22549
Replacement Spot Mirror 3-3/4"	52-22550



BRACKETS ONLY



- Brackets for Longacre® wide angle racing mirrors.
- No welding - bolts to your roll bars.
- Brackets adjust from 2" to 5-1/2".
- Brackets CNC machined from billet aluminum.
- Includes 2 brackets.

DESCRIPTION	PART #
Mirror Bracket Pair - Short - 1-3/4"	52-22538
Mirror Bracket Pair - Short - 1-1/2"	52-22539
Mirror Bracket Pair - Long - 1-3/4"	52-22540
Mirror Bracket Pair - Long - 1-1/2"	52-22541

BILLET REAR END BREATHER KIT

- Includes vent, hardware, and hose for a complete installation.
- Clamp on design - no welding required.
- 1/4" NPT.
- Available with bracket for either 1-3/4" or 1-1/2" roll bars.

DESCRIPTION	PART #
Billet Rear End Breather Kit 1-3/4"	52-22568
Billet Rear End Breather Kit 1-1/2"	52-22569
Billet Rear End Breather 1-3/4"	52-22564
Billet Rear End Breather 1-1/2"	52-22566





COMPLETE BRAKE LINE KIT

Includes 4 SS braided lines to go from the chassis to the wheels, an assortment of pre-flared bendable steel chassis lines, fittings, connectors, frame tabs, Adel™ clamps, and wire ties. (Order caliper fittings separately.)

DESCRIPTION	PART #
Complete Brake Line Kit - #3 AN	52-45215
Complete Brake Line Kit - #4 AN	52-45216

Note: Not for street driven cars minimum bending radius 2".



STEEL BRAIDED BRAKE LINES

Stainless steel braided teflon line with permanently swaged fittings. 2500 psi working pressure. #4 AN fittings on both ends.

DESCRIPTION	PART #
Brake Line - 22" #4 AN	52-45150
Brake Line - 22" #3 AN	52-45153
Brake Line - 24" #4 AN	52-45160
Brake Line - 24" #3 AN	52-45163



CALIPER FITTING

- 1/8" NPT, #3, or #4 AN.
- Fits most popular models.

DESCRIPTION	PART #
1/8" NPT to #4 AN Straight	52-45240
1/8" NPT to #4 AN 90°	52-45230
1/8" NPT x #3 AN Straight	52-45243
1/8" NPT x #3 AN 90°	52-45233



LONG LEG CALIPER FITTING

- 1/8" NPT 90° with #4 and long leg for extra clearance.
- 7/16"-20 #4 AN 90° (Fits GM single piston.)

DESCRIPTION	PART #
1/8" NPT x #4 AN 90°	52-45220
7/16"-20 x #4 AN 90°	52-45250



BRAKE FLUID BLEED BOTTLE

- Back of bottle has a magnet to hold it in place.
- Split hose - connect to one or two bleeders at once.

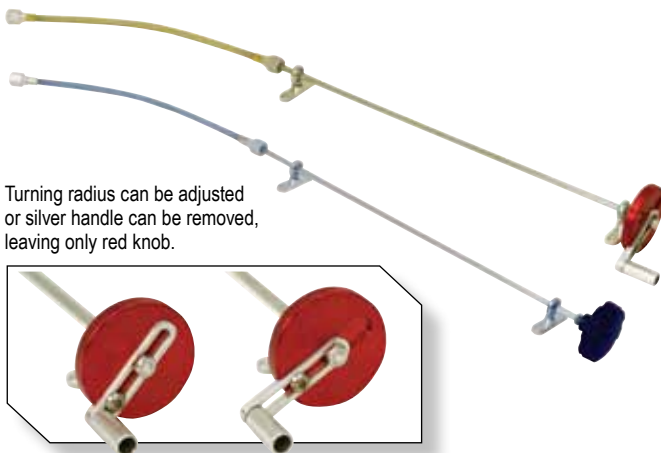
DESCRIPTION	PART #
Brake Fluid Bleed Bottle Kit	52-45200
Single Brake Fluid Bleed Bottle	52-45202



BRAKE LINE FRAME TAB & FITTINGS

- #3 or 4 AN x 3/16" brake line, "bulkhead" style, with jam nut for easy mounting.

DESCRIPTION	PART #
#3 AN Brake Line Frame Fitting	52-45263
#4 Brake Line Frame Fitting	52-45273
#3 Brake Line Frame Fitting w/ Tab & Nut	52-45286
#4 Brake Line Frame Fitting w/ Tab & Nut	52-45288
Frame Tab Pack of 4	52-45284
Frame Tab Pack of 10	52-45285



Turning radius can be adjusted or silver handle can be removed, leaving only red knob.

BRAKE BALANCE ADJUSTERS DELUXE & BASIC

- Frictionless polymer bearing mount for easy, no-bind adjustments.
- Detents every 90° make precise adjustments easier. "Click" the exact change you want.
- HD braided flex connector: shorter virtually no 'wrap up'.
- 3/8"-24 or 7/16"-20 connector to your bias bar. (Check before ordering.)

DESCRIPTION	PART #
Billet Aluminum Brake Balance Adjuster - 3/8" - 24	52-44108
Basic Brake Balance Adjuster - 3/8" - 24	52-44107

CARB LINKAGE KITS

STANDARD • EXTENDED • DELUXE

- Includes 2 all metal rod ends, aircraft aluminum tube, Holley® carb bushing, 2 return springs, bolts, and nuts.
- Just bend to clear air cleaner, cut to length, and thread one end (requires 1/4"-28 tap.)
- Easily forms to any car or use straight.
- 6061 T6 Heat treated aluminum alloy is tough to bend but stays to shape in use. Won't straighten out and cut throttle travel, costing you precious horsepower.
- Throttle rod length 23-1/4".
- Only fits small block Chevy.



DESCRIPTION	PART #
Standard Carb Linkage Kit	52-32700
Extended Carb Linkage Kit	52-32702
Deluxe Carb Linkage Kit - Short	52-32720

ALUMINUM AIR CLEANER STUD KIT

- Includes aluminum stud and thumb knob, air cleaner lid mounting stop, and jam nut.
- Mounting stop and jam nut go under air cleaner lid so you can tighten the thumb knob without distorting the lid.
- Set screw in thumb knob keeps it from coming loose.
- Built-in rubber seal keeps dust out of your engine.
- Top thread 5/16", bottom carb thread 1/4", or 5/16".



DESCRIPTION	PART #
Aluminum Air Cleaner Stud Kit - 5/16" Carb Thread - Holley®	52-32750
Aluminum Air Cleaner Stud Kit - 1/4" Carb Thread	52-32752
Replacement Thumb Knob for Air Cleaner Stud Kit	52-32754

QUICK CHECK BRAKE PRESSURE GAUGE SET

- Check brake pressures at the caliper.
- Set front-to-rear bias for best braking performance.
- Temporarily installs in bleeder valve.



DESCRIPTION	PART #
Quick Check Brake Pressure Gauge Set 1/4" - 28	52-44145
Quick Check Brake Pressure Gauge Set GM Metric 10mm	52-44147
Quick Check Brake Pressure Gauge Set 3/4" - 24	52-44149

THROTTLE STOP BRACKET

- Helps prevent broken throttle arms with a positive stop.
- Lightweight aluminum - won't change in use.



DESCRIPTION	PART #
Primary Throttle Stop Bracket - Holley® 4 BBL	52-32730
Primary Throttle Stop Bracket - Holley® 2 BBL	52-32732

CARB BUSHINGS

- Split bushing for Holley® carbs.



DESCRIPTION	PART #
Replacement Carb Bushings - Aluminum	52-32707

THROTTLE RETURN KITS

- Lightweight aluminum bracket, 2 springs, Holley® carb bushing, and miscellaneous hardware.
- Only fits small block Chevy.



DESCRIPTION	PART #
Throttle Return Kit - Short	52-32710
Replacement Throttle Return Springs (Pack of 2)	52-32500



BILLET REMOTE STARTER BUTTON

- Crank your motor over from the engine compartment.
- Cool billet aluminum.

DESCRIPTION	PART #
Billet Remote Starter Button	52-45795



SPARK PLUG VIEWER

- Get your jetting right for maximum power.
- Batteries included.
- 10X Magnification.
- Includes spark plug holder: 52-50886. PART #

DESCRIPTION	PART #
Spark Plug Viewer with Holder	52-50886
Spark Plug Viewer	52-50884
Spark Plug Holder	52-50885



ENGINE COMPRESSION TESTER

- 14 mm Plug adapter.
- Check for bent or leaking valves, bad ring seal, even leaking head gaskets.

DESCRIPTION	PART #
Engine Compression Tester	52-73025



BRAIDED TEFLON FUEL LINE

- Smooth bore #8 AN 1/2" teflon fuel line won't collapse at high fuel draw.
- Ends installed and ready-to-use.
- 144" Length for 102" to 114" wheelbase cars.

DESCRIPTION	PART #
Braided Teflon Fuel Line	52-33900



MAGNETIC DRAIN PLUG

- Traps ferrous particles and keeps them from damaging your equipment.
- Check often to spot developing problems.

DESCRIPTION	PART #
Drain Plug - 1/2"-20	52-33300
Drain Plug - 3/8" Npt	52-33320



HOOD PIN KITS

- Includes pins, jam nuts, scuff plates, and flip style safety pins.

DESCRIPTION	PART #
Aluminum Kit - 1/2"-20 Set of 2	52-23500
Aluminum Kit - 1/2"-20 Set of 6	52-23502
Aluminum Kit - 3/8"-24 Set of 2	52-23510
Steel Kit - 3/8"-24 Set of 2	52-23600
2 Replacement Torsion Clips	52-23550



HYDRAULIC CLUTCH LINE KIT

- SS braided line quickly and easily connects the clutch master cylinder to the slave cylinder.
- Comes complete with fittings for most applications.
- 36" For suspended pedals.

DESCRIPTION	PART #
Hydraulic Clutch Line Kit	52-28050



UNIVERSAL AIR TOOL QUICK DISCONNECT

- Connects to all 3 commonly used fittings.
- No more switching fittings to use that new or borrowed tool.
- Female only (Sold in pairs).

DESCRIPTION	PART #
Universal Air Tool Quick Dis.	52-36013



HEADER BOLTS CHEVY SMALL BLOCK

- Compact 12 point head – use a 3/8" box wrench to tighten around big tubes.
- Grade 9 alloy steel.
- 170,000 psi.

DESCRIPTION	PART #
Header Bolts	52-35600

SPOILER & SPLITTER SUPPORTS

- Lightweight T6 aluminum tube with R & L threads.
- Can also be used for windshield supports.
- 6", 8", and 10" in black anodized tubes.
- Includes both flat top and button head mounting screws.
- Splitter supports have high strength steel pivot ends to help prevent breakage.
- Ultra Lightweight Aluminum: CNC machined billet aluminum, black anodized.
- Ultra Lightweight Aluminum: high strength, lightweight tapered tube.
- Ultra Lightweight Aluminum: Bolts on easily and uses specially built aluminum heim joints to adjust for any angle.

DESCRIPTION	PART #
Aluminum Support Rod 6"	52-23756
Aluminum Support Rod 8"	52-23758
Aluminum Support Rod 10"	52-23760
Aluminum Splitter Support Rod 6"	52-23776
Aluminum Splitter Support Rod 8"	52-23778
Aluminum Splitter Support Rod 10"	52-23780
Aluminum Spoiler Support 6"	52-23706
Aluminum Spoiler Support 8"	52-23708
Aluminum Spoiler Support 10"	52-23710



Length shown is the rod. Heim joints add 1" overall, pivot center-to-center. Adjustment is +1.5" beyond this. 6" support will be center-to-center min 7", max 8.5".

FENDER SUPPORT KIT

- Two flexible supports made from lightweight break resistant polymer material.
- Springs back to shape if bent.
- Includes all hardware for a quick and professional installation.
- Lightweight aluminum mounts.

DESCRIPTION	PART #
Fender Support Kit	52-23720
Adjustable Fender Support Kit	52-23740
Replacement Fender Support Rods - 1 Pair	52-23744



Adjustable style fender support bracket comes with 52-23740.

LONGACRE® RADIATOR CAPS



DESCRIPTION	PART #
Radiator Cap 22 - 24 psi	52-75260
Radiator Cap 29 - 31 psi	52-75265

BACKING DISK FOR SPOILER SUPPORT



Use to support Lexan® spoiler or use to fasten spoiler to deck lid.

DESCRIPTION	PART #
Backing Disk for Spoiler	52-23702

SHIFTER STICK

- CNC machined billet aluminum.
- Lightweight yet strong.
- To replace heavier steel original.
- Slotted bottom hole to install easier.



DESCRIPTION	PART #
Shifter Stick 3"	52-22613

BILLET ALUMINUM SHIFTER BALLS



- New design better heat insulation.
- 2" Ball: Extra holes are drilled and mounted with a stainless steel bolt (SS transfers heat poorly) or on shifter arm stud.
- No insert to come out - ball won't come off in your hand during the race.
- One piece CNC machined billet aluminum.

DESCRIPTION	PART #
Shifter Ball 3/8"-16 Thread 2"	52-22601
Shifter Ball 3/8"-16 Thread 1-5/8"	52-22607



FIREBRAID™ INSULATION SLEEVING

- High temp, flexible insulating sleeving.
- Maximum Temperature: 500°F.
- Silicon coated fiberglass braid keeps headers from burning wires.
- Plug wires, battery cables, insulates fuel and oil lines, and will not burn.

DESCRIPTION	PART #
Insulation Sleeving - 5/16 in - 36 in	52-49500
Insulation Sleeving - 5/16 in - 10 ft	52-49520

Plug Wires, steel brake lines.

Insulation Sleeving - 3/8 in - 36 in	52-49600
Insulation Sleeving - 3/8 in - 10 ft	52-49620

Special for 8mm plug wire.

Insulation Sleeving - 9/16 in - 36 in	52-49700
Insulation Sleeving - 9/16 in - 10 ft	52-49720

Battery cables, fuel lines.

Insulation Sleeving - 11/16 in - 36 in	52-49750
Insulation Sleeving - 11/16 in - 10 ft	52-49770

#6 Fuel line, battery cables.

Insulation Sleeving - 13/16 in - 36 in	52-49800
Insulation Sleeving - 13/16 in - 10 ft	52-49820

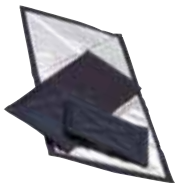
#8 & #10 oil and fuel lines.

Insulation Sleeving - 15/16 in - 36 in	52-49850
Insulation Sleeving - 15/16 in - 10 ft	52-49870

#12 Oil Lines, cooler lines.

Insulation Sleeving - 1-1/8 in - 36 in	52-49900
Insulation Sleeving - 1-1/8 in - 10 ft	52-49920

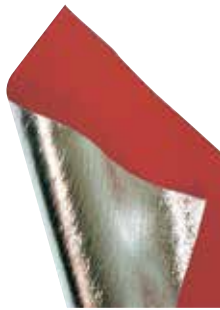
#16 Dry sump oil lines.



INSULATING FLOOR MATS

- Specially designed for use in driver's compartment.
- Made from fireproof non-asbestos heavy weight cloth.
- Silicon coated on one side and aluminized for heat reflection on the other side.
- Maximum temp: 600°F.
- In the middle is a heavy duty high temp insulation material.
- Eyelets in the corners to mount with rivets or screws.

DESCRIPTION	PART #
Floor Mat - 24" x 18"	52-64320
Floor Mat - 18" x 18"	52-64360
Floor Mat - 24" x 10"	52-64400
Floor Mat - 12" x 8"	52-64420



ALUMINIZED INSULATION CLOTH

- Easy to work with - just cut shape with scissors.
- Good insulation for firewall, floor, and tunnel.
- Max ambient temp: 600°F.
- Aluminized on one side to reflect heat, silicone coated on the other.

DESCRIPTION	PART #
Aluminized Insulation Cloth 58" x 24"	52-64150



Not recommended for street applications.

HEADER INSULATION 'TAPE'

- Contains exhaust heat for better velocity, scavenging, more power, and cooler under hood temperatures.
- 2" x 1/16".
- 100' Roll will do for most V8 headers.
- Maximum temp: 1,250°F.

DESCRIPTION	PART #
100' Header Insulation 'Tape'	52-64850
50' Header Insulation 'Tape'	52-64870
25' Header Insulation 'Tape'	52-64880
50' x 2" 1/32" Insulation 'Tape'	52-64830



STAINLESS STEEL TIES FOR HEADER TAPE, ETC.

- Holds header insulation in place.
- Use as a super strong wire tie.
- Stays tight.
- Heat resistant.
- Maximum temp: 1,250°F.

DESCRIPTION	PART #
Header Wrap Locking Ties 8", 8-Ties	52-47840
Header Wrap Locking Ties 8", 12-Ties	52-47843
Header Wrap Locking Ties 8", 24-Ties	52-47846
Header Wrap Locking Ties 14", 4-Ties	52-47842
Header Wrap Locking Ties 14", 12-Ties	52-47845
Header Wrap Locking Ties 14", 24-Ties	52-47848



LEXAN™ CLEANER AND POLISH

- #1 Cleaner removes dirt and leaves a glaze that cuts static and repels dust.
- #2 Polish to remove fine scratches and haze – works great for polishing car paint, removing oxide and scuffs.
- #3 Polish for deeper scratches.

DESCRIPTION	PART #
Lexan™ #1 Cleaner	52-63500
Lexan™ #2 Polish	52-63600
Lexan™ #3 Polish	52-63700

CAR COVERS

PAVEMENT • DIRT LM • OPEN WHEEL MOD

Pavement Late Model & Open Wheel Modified

- Heat reflective silver color.
- Soft liner won't scratch paint.
- Moisture resistant.
- Zippered window to get in and out.
- Will fit most Late Model cars: All Pro, ASA, and SW Series, etc.
- Eyelets along bottom to secure cover from tampering.

Dirt Late Model

- Custom designed for Dirt Late Model race cars.
- Hood zipper allows engine work without removing cover.



DESCRIPTION	PART #
Pavement Late Model Car Cover	52-11150
Dirt Late Model Car Cover	52-11152
Dirt Late Model Rear Car Cover	52-11153
Open Wheel Modified Car Cover	52-11154
Cockpit Car Cover	52-11156

COCKPIT CAR COVER

- Keeps windows & cockpit free of rain & dust.
- Eyelets along bottom to secure cover.
- Storage bag included.
- Soft liner won't scratch windows or paint.



KEEP EVERYTHING IN ORDER AT THE TRACK OR AROUND THE SHOP WITH OUR STURDY CASES.

Sizes are approximate and are subject to minor changes.



- Matches all our other hard cases.
- Store parts neatly, not rolling around in your tool box.
- Radios, rivets, drills, stopwatches, tire gauges, durometers, etc.

DESCRIPTION	PART #
Storage Box For 15" Low Profile Pads	52-72292
Lined Hard Case 16-3/4" x 13-1/2" x 4"	52-50522
Lined Hard Case 14-3/8" x 11" x 3-1/2"	52-50515
Lined Hard Case 9-1/2" x 7" x 1-3/4"	52-50518
Lined Hard Case 10" x 6" x 3-1/8"	52-50514
Lined Hard Case 8-1/4" x 4-1/8" x 3-1/8"	52-50512
Lined Hard Case 9-1/4" x 3" x 1 1/2"	52-50516

DESCRIPTION	PART #
Lined Hard Case 6-5/8" x 2-1/4" x 1-1/2"	52-50513
Lined Hard Case 4-1/8" x 2-5/8" x 1"	52-50511
Bump Steer Gauge Storage Case 22-1/2" x 20-1/2" x 4"	52-79019
Storage Box for 12" Scale Pads	52-72280
Lined Hard Case 4-1/4" x 3" x 1-7/8"	52-50520
Lined Hard Case 2-3/4" x 2-1/8" x 1"	52-50517

LONGACRE® PIT GEAR BAG
52-11911



LONGACRE® PIT GLOVES
52-11210 - XXL



AFCO

AT SERIES T-SHIRT
89108



AFCO WORK SHIRT
89086



AFCO WORK JACKET
89085



AT SERIES HOODIE
89115



AFCO BANNER
LIT-215

