

KENWOOD

KDC-X497 KDC-HD455U

CD-RECEIVER

INSTRUCTION MANUAL

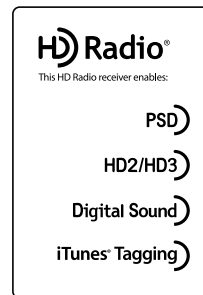
AMPLI-TUNER LECTEUR DE CD

MODE D'EMPLOI

REPRODUCTOR DE DISCOS COMPACTOS RECEPTOR DE FM/AM

MANUAL DE INSTRUCCIONES

JVC KENWOOD Corporation



Take the time to read through this instruction manual.

Familiarity with installation and operation procedures will help you obtain the best performance from your new CD-receiver.

For your records

Record the serial number, found on the back of the unit, in the spaces designated on the warranty card, and in the space provided below. Refer to the model and serial numbers whenever you call upon your Kenwood dealer for information or service on the product.

Model KDC-X497/ KDC-HD455U Serial number _____

CONTENTS

BEFORE USE	2
BASICS	3
GETTING STARTED	4
CD / USB / iPod	5
AUX	6
HD RADIO™	7
Pandora®	8
AUDIO SETTINGS	9
DISPLAY SETTINGS	10
MORE INFORMATION	10
TROUBLESHOOTING	11
INSTALLATION / CONNECTION	12
SPECIFICATIONS	i and ii
	(at the end of the book)

How to read this manual

- Operations explained mainly using buttons on the faceplate.
- [XX] indicates the selected items.
- (→ XX) indicates references are available on the stated page number.

BEFORE USE

⚠ Warning

Do not operate any function that takes your attention away from safe driving.

⚠ Caution

Volume setting:

- Adjust the volume so that you can hear sounds outside the car to prevent accident.
- Lower the volume before playing digital sources to avoid damaging the speakers by the sudden increase of the output level.

General:

- Avoid using the USB device or iPod/iPhone if it might hinder driving safety.
- Make sure all important data has been backed up. We shall bear no responsibility for any loss of recorded data.
- Never put or leave any metallic objects (such as coins or metal tools) inside the unit, to prevent a short circuit.
- If a disc error occurs due to condensation on the laser lens, eject the disc and wait for the moisture to evaporate.

Remote control (RC-406):

- Do not leave the remote control in hot places such as on the dashboard.
- The Lithium battery is in danger of explosion if replaced incorrectly. Replace it only with the same or equivalent type.
- The battery pack or batteries shall not be exposed to excessive heat such as sunshine, fire or the like.
- Keep battery out of reach of children and in original package until ready to use. Dispose of used batteries promptly. If swallowed, contact a physician immediately.

CALIFORNIA, USA ONLY

This perchlorate WARNING applies only to the product sold or distributed in California USA "Perchlorate Material—special handling may apply, See www.dtsc.ca.gov/hazardouswaste/perchlorate."

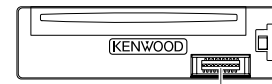
Maintenance

Cleaning the unit: Wipe off dirt on the faceplate with a dry silicon or soft cloth.

Cleaning the connector: Detach the faceplate and clean the connector with a cotton swab gently, being careful not to damage the connector.

Handling discs:

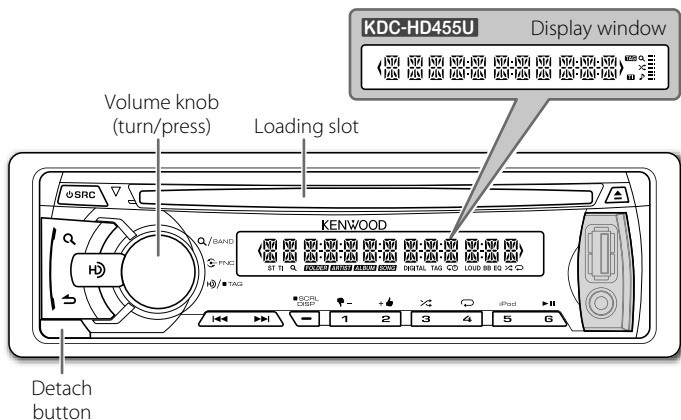
- Do not touch the recording surface of the disc.
- Do not stick tape etc. on the disc, or use a disc with tape stuck on it.
- Do not use any accessories for the disc.
- Clean from the center of the disc and move outward.
- Clean the disc with a dry silicon or soft cloth. Do not use any solvents.
- When removing discs from this unit, pull them out horizontally.
- Remove burrs from the center hole and disc edge before inserting a disc.



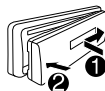
Connector (on the reverse side of the faceplate)

BASICS

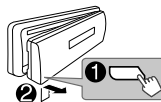
Faceplate



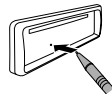
Attach



Detach

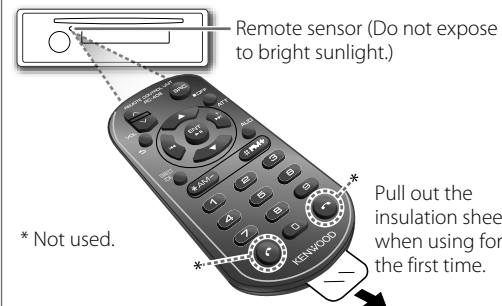


How to reset

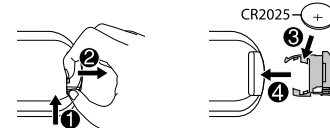


Your preset adjustments will also be erased.

Remote control (RC-406)

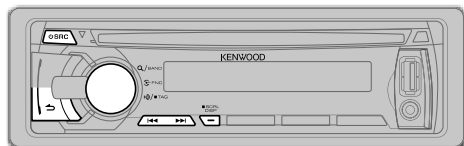


How to replace the battery



To	Do this (on the faceplate)	Do this (on the remote control)
Turn on the power	Press SRC . • Press and hold to turn off the power.	Press and hold SRC to turn off the power. (Pressing SRC does not turn on the power.)
Adjust the volume	Turn the volume knob.	Press VOL \wedge or VOL \vee . Press ATT during playback to attenuate the sound. • Press again to cancel.
Select a source	Press SRC repeatedly.	Press SRC repeatedly.
Change the display information	Press SCRL DISP repeatedly. • Press and hold to scroll the current display information.	(not available)

GETTING STARTED



1 Cancel the demonstration

When you turn on the power (or after you reset the unit), the display shows: "CANCEL DEMO" → "PRESS" → "VOLUME KNOB"

- 1 Press the volume knob.
[YES] is selected for the initial setup.
- 2 Press the volume knob again.
"DEMO OFF" appears.

2 Set the clock

- 1 Press the volume knob to enter [FUNCTION].
- 2 Turn the volume knob to select [SETTINGS], then press the knob.
- 3 Turn the volume knob to select [CLOCK], then press the knob.
- 4 Turn the volume knob to select [CLOCK ADJUST]/ [CLOCK ADJ], then press the knob.
- 5 Turn the volume knob to adjust the hour, then press the knob.
- 6 Turn the volume knob to adjust the minute, then press the knob.
Press ◀◀/ ▶▶ to move between the hour and minute adjustment.
- 7 Press and hold ↵ to exit.

(or)

Press and hold **SCRL DISP** to enter clock adjustment mode directly while in clock display screen.
Then, perform steps **5** and **6** above to set the clock.

3 Set the initial settings

- 1 Press **SRC** to enter [STANDBY].
- 2 Press the volume knob to enter [FUNCTION].
- 3 Turn the volume knob to select [INITIAL SET], then press the knob.
- 4 Turn the volume knob to make a selection (see the following table), then press the knob.
- 5 Press and hold ↵ to exit.

• To return to the previous hierarchy, press ↵.

Default: **XX**

PRESET TYPE **NORMAL/ NORM:** Memorizes one station for each preset button in each band (FM1/ FM2/ FM3/ AM). ; **MIX:** Memorizes one station for each preset button regardless of the selected band.

KEY BEEP **ON:** Activates the keypress tone. ; **OFF:** Deactivates.

PANDORA SRC **ON:** Enables PANDORA in source selection. ; **OFF:** Disables. (→ 8)

BUILT-IN AUX/ BUILTIN AUX **ON:** Enables AUX in source selection. ; **OFF:** Disables. (→ 6)

CD READ **1:** Automatically distinguishes between audio file disc and music CD. ; **2:** Forces to play as a music CD. No sound can be heard if an audio file disc is played.

SP SELECT **OFF/ 5/4/ 6 × 9/6/ OEM:** Selects according to the speaker size (5 inches or 4 inches, 6×9 inches or 6 inches) or OEM speakers for optimum performance.

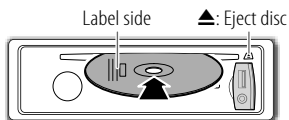
F/W UPDATE

F/W UP xx.xx **YES:** Starts upgrading the firmware. ; **NO:** Cancels (upgrading is not activated).
For details on how to update the firmware, see: www.kenwood.com/cs/ce/

CD / USB / iPod

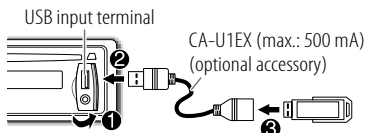
Start playback

CD



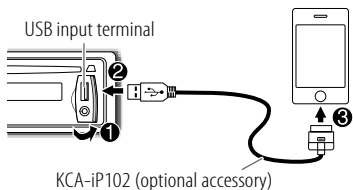
The source changes to CD and playback starts.

USB



The source changes to USB and playback starts.

iPod/iPhone



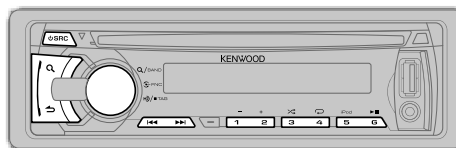
The source changes to iPod and playback starts.

Press **5 iPod** to select the control mode while in iPod source.

MODE ON: From the iPod*1.

MODE OFF: From the unit.

*1 You can still control play/pause, file selection, fast-forward or reverse files from the unit.



✓ : Applicable
— : Not applicable

To	Do this	CD	USB	iPod
Pause or resume playback	Press 6 ►II (or ENT ►II on RC-406).	✓	✓	✓
Select a track/file	Press ◀◀ / ▶▶ (or ◀◀ / ▶▶ (+) on RC-406).	✓	✓	✓
Select a folder	Press 1 - / 2 + (or *AM- / #FM+ on RC-406).	✓*2	✓	—
Reverse/Fast-forward	Press and hold ◀◀ / ▶▶ (or ◀◀ / ▶▶ (+) on RC-406).	✓	✓	✓
Select a track/file from a list	<p>1 Press Q.</p> <p>2 Turn the volume knob to make a selection, then press the knob.</p> <ul style="list-style-type: none"> AAC/MP3/WMA file: Select the desired folder, then a file. iPod or KENWOOD Music Editor Light (KME Light)/ KENWOOD Music Control (KMC) file*4: Select the desired file from the list (PLAYLISTS, ARTISTS, ALBUMS, SONGS, PODCASTS*5, GENRES, COMPOSERS*5). To return to the root folder (or first file), press number button 5 iPod. To return to the previous hierarchy, press ↶. To cancel, press and hold ↶. 	✓	✓	✓*3
	<ul style="list-style-type: none"> To skip songs at a specific ratio, press ◀◀ / ▶▶. (→ 6) 	—	✓*4	✓*3
Repeat play	<p>Press 4 ↻ repeatedly.</p> <ul style="list-style-type: none"> Audio CD: TRACK/ TRAC REPEAT, REPEAT OFF AAC/MP3/WMA file: FILE REPEAT, FOLDER/ FOLD REPEAT, REPEAT OFF iPod or KME Light/ KMC file: FILE REPEAT, REPEAT OFF 	✓	✓	✓*3
Random play	<p>Press 3 ↺ repeatedly.</p> <ul style="list-style-type: none"> Audio CD: DISC RANDOM, RANDOM OFF AAC/MP3/WMA file or iPod or KME Light/ KMC file: FOLDER/ FOLD RANDOM, RANDOM OFF 	✓	✓	✓*3
	Press and hold 3 ↺ to select "ALL RANDOM."	✓*2	✓	✓*3

*2 Only for AAC/MP3/WMA files.

*3 Applicable only when **[MODE OFF]** is selected.

*4 Only for files registered in the database created with KME Light/ KMC. (→ 10)

*5 Only for iPod.

Direct Music Search (using RC-406)

- 1 Press **DIRECT**.
- 2 Press the number buttons to enter a track/file number.
- 3 Press **◀◀ / ▶▶ (+)** to search for music.
 - To cancel, press **↵**.
 - Not available if Random Play is selected.
 - Not applicable for iPod, KME Light/ KMC file. (→ 10)

Select a song by name

While listening to iPod...

- 1 Press **Q**.
- 2 Turn the volume knob to select a category, then press the knob.
- 3 Press **Q** again.
- 4 Turn the volume knob to select the character to be searched for.
- 5 Press **◀◀ / ▶▶** to move to the entry position. You can enter up to three characters.
- 6 Press the volume knob to start searching.
- 7 Turn the volume knob to make a selection, then press the knob.

Repeat step 7 until the desired item is selected.

 - To search for a character other than A to Z and 0 to 9, enter only ******.
 - To return to the previous hierarchy, press **↵**.
 - To return to the top menu, press number button **5 iPod**.
 - To cancel, press and hold **↵**.

Set the skip ratio

While listening to iPod or KME Light/ KMC file...

- 1 Press the volume knob to enter **[FUNCTION]**.
- 2 Turn the volume knob to select **[SETTINGS]**, then press the knob.
- 3 Turn the volume knob to select **[SKIP SEARCH]**, then press the knob.
- 4 Turn the volume knob to make a selection, then press the knob.

0.5% (default)/ **1%**/ **5%**/ **10%**: Sets the skip ratio when searching for a song.
(Holding **◀◀ / ▶▶** skips songs at 10% regardless of the setting made.)
- 5 Press and hold **↵** to exit.

Muting upon the reception of a phone call

Connect the MUTE wire to your telephone using a commercial telephone accessory. (→ 13)

When a call comes in, "CALL" appears.

- The audio system pauses.
- To continue listening to the audio system during a call, press **⏻ SRC**. "CALL" disappears and the audio system resumes.

When the call ends, "CALL" disappears.

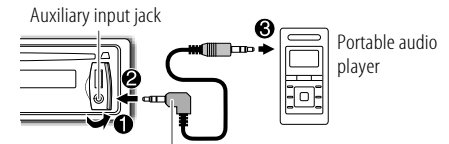
- The audio system resumes.

Preparation:

Select **[ON]** for **[BUILT-IN AUX]** / **[BUILTIN AUX]**. (→ 4)

Start listening

- 1 Connect a portable audio player (commercially available).



3.5 mm (1/8") stereo mini plug with "L" shaped connector (commercially available)

- 2 Press **⏻ SRC** to select AUX.
- 3 Turn on the portable audio player and start playback.

Set the AUX name

While listening to AUX...

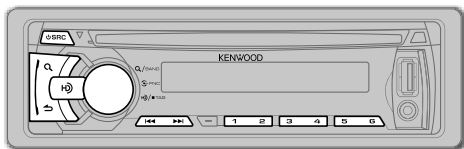
- 1 Press the volume knob to enter **[FUNCTION]**.
- 2 Turn the volume knob to select **[SETTINGS]**, then press the knob.
- 3 Turn the volume knob to select **[AUX NAME SET]/ [AUX NAME]**, then press the knob.
- 4 Turn the volume knob to make a selection, then press the knob.

AUX (default)/ **DVD**/ **PORTABLE**/ **GAME**/ **VIDEO**/ **TV**
- 5 Press and hold **↵** to exit.

HD RADIO™

You can tune in to both conventional and HD Radio broadcasts.

- To find HD Radio stations in your area, visit <<http://www.hdradio.com>>.



Search for a station or channel

- 1 Press **SRC** to select HD RADIO.
 - 2 Press **Q** repeatedly (or press ***AM-** / **#FM+** on RC-406) to select FM1/ FM2/ FM3/ AM.
 - 3 Press **◀◀** / **▶▶** (or press **◀◀** / **▶▶** (+) on RC-406) to search for a station or channel.
- **To store a station or channel:** Press and hold one of the number buttons (1 to 6).
 - **To select a stored station or channel:** Press one of the number buttons (1 to 6) (or press one of the number buttons (1 to 6) on RC-406).

To select an HD Radio multicast channel

Many HD Radio stations offer more than one channel programming. This service is called multicasting. While receiving HD Radio multicast channels...

Press **◀◀** / **▶▶** to select your desired channel (HD1 to HD8).
“LINKING” appears while linking to a multicast channel.

Direct Access Tuning (using RC-406)

- 1 Press ***AM-** / **#FM+** to select a band.
 - 2 Press **DIRECT** to enter Direct Access Tuning.
“- - - -” (for FM), “- - - -” (for AM) or “HD -” appears on the display.
 - 3 Press the number buttons to enter a frequency or channel.
 - 4 Press **◀◀** / **▶▶** (+) to search for a frequency or channel.
- To cancel, press **↶**.
 - If no operation is done for 10 seconds after step 3, Direct Access Tuning is automatically canceled.

Other settings

- 1 Press the volume knob to enter **[FUNCTION]**.
- 2 Turn the volume knob to select **[SETTINGS]**, then press the knob.
- 3 Turn the volume knob to make a selection (see the following table), then press the knob.
- 4 Press and hold **↶** to exit.

Default: **XX**

IF BAND	AUTO: Increases the tuner selectivity to reduce interference noises from adjacent stations. (Stereo effect may be lost.) ; WIDE: Subjects to interference noises from adjacent stations, but sound quality will not be degraded and the stereo effect will remain.
SEEK MODE	Selects the tuning method for the ◀◀ / ▶▶ buttons. AUTO1: Automatically searches for a station. ; AUTO2: Searches for a preset station. ; MANUAL: Manually search for a station.
AUTO MEMORY	YES: Automatically starts memorizing 6 stations with good reception. ; NO: Cancels. (Selectable only if [NORMAL] / [NORM] is selected for [PRESET TYPE] .) (→ 4)
RECEIVE MODE/ RCV MODE	Sets the receive mode of the HD Radio receiver. AUTO: Automatically tunes to analog broadcast when there is no digital broadcast. ; DIGITAL: Tunes in to digital broadcast only. ; ANALOG: Tunes in to analog broadcast only.
TAG MEMORY	Displays the tag memory usage of the HD Radio receiver. 00 — 50: Up to 50 tags can be registered to this unit.
CLOCK	
TIME SYNC	ON: Synchronizes the unit's time to the Radio Broadcast Data System station time. ; OFF: Cancels.

Tag and purchase your favorite songs from iTunes Store

Some HD Radio broadcasts provide Program Service Data (PSD) for songs. You can tag the song and store its PSD up to 50 songs while listening to the song.

- By using the tagging function, you can easily purchase the songs from iTunes Store.
- For the best compatibility of iTunes Tagging, use the latest software versions with the iPod/iPhone that can be connected to this unit. (→ 10)

1

Tag the song

While receiving a song with PSD (“TAG” lights up)...

Press and hold **HD**.

“TAG STORED” → “MEMORY XX/50”/ “MEM XX/50” appears when the song is stored on the unit.

- When pressing and holding **HD** within 10 seconds before or after the PSD changes, the tags for two songs are stored.

2 Transfer the tagged PSD to your iPod/iPhone

Connect the iPod/iPhone to the unit.

The source changes to "USB," and starts transferring the tagged PSDs to the iPod/iPhone automatically.

- While transferring, "TAG" flashes and "TAG STORING" appears. When all the tagged PSDs are transferred, "TAG TRANSFERD"/"TAG TRANSFR" appears.

Notes:

- Your iPod/iPhone must have 50 MB free space which is required for transferring a tagged PSD.
- During the transferring process:
 - Do not change the source.
 - Do not disconnect the iPod/iPhone.
- When the connected iPod/iPhone is not compatible with iTunes Tagging you cannot transfer the tagged PSDs.

3 Purchase songs from iTunes Store

- 1 Connect the iPod/iPhone to the PC.
- 2 Synchronize the iPod/iPhone on the iTunes. The tagged PSDs are transferred to the PC and iTunes displays the list of the tagged songs. After the data transfer is completed, the stored PSDs are automatically deleted from the iPod/iPhone.

Notes:

- iTunes 7.4 or later version is required.
- For details about iPod/iPhone and iTunes, refer also to the instructions supplied with the iPod/iPhone or visit <<http://www.apple.com>>.

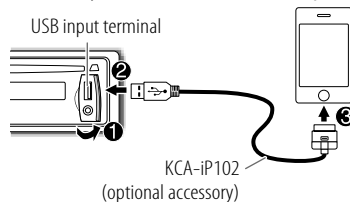
Preparation:

Install the latest version of the Pandora application into your device (iPhone/ iPod touch), then log in and create an account with Pandora.

- Select [ON] for [PANDORA SRC]. (→ 4)

Start listening

- 1 Open the Pandora application on your device.
- 2 Connect your device to the USB input terminal.



The source changes to PANDORA and broadcast starts.

About Pandora

- Pandora is only available in the US.
- Because Pandora is a third-party service, the specifications are subject to change without prior notice. Accordingly, compatibility may be impaired or some or all of the services may become unavailable.
- Some functions of Pandora cannot be operated from this unit.
- For issues using the application, please contact Pandora at pandora-support@pandora.com.
- If the version of the OS of the connected iPhone is earlier than 4.0, start the Pandora application before selecting the PANDORA source.

To	Do this
Pause or resume playback	Press 6 ► (or press ENT ► on RC-406).
Thumbs up or thumbs down	Press 1 ♪ / 2 ♩. • If thumbs down is selected, the current track is skipped.
Skip a track	Press ►►.
Create a new station	<ol style="list-style-type: none"> 1 Press and hold the volume knob. 2 Turn the volume knob to select [FROM TRACK] or [FROM ARTIST], then press the knob. A new station is created based on the current song or artist.
Save a station	Press and hold number button 3 , 4 or 5 to store. • To select a stored station, press the same button (3 , 4 or 5).
Search for a registered station	<ol style="list-style-type: none"> 1 Press Q. 2 Turn the volume knob to make a selection, then press the knob (or press ▲/▼ on RC-406). [BY DATE]: According to the registered date. [A-Z]: Alphabetical order. 3 Turn the volume knob to the desired station, then press the knob.

AUDIO SETTINGS

While listening to any source...

- 1 Press the volume knob to enter [FUNCTION].
- 2 Turn the volume knob to select [AUDIO CONTROL]/ [AUDIO CTRL], then press the knob.
- 3 Turn the volume knob to make a selection (see the following table), then press the knob.
Repeat step 3 until the desired item is selected or activated.
- 4 Press and hold ↵ to exit.

(or using RC-406)

- 1 Press **AUD** to enter [AUDIO CONTROL]/ [AUDIO CTRL].
- 2 Press ▲/▼ to make a selection, then press **ENT ▶||**.

- To return to the previous hierarchy, press ↵.

Default: **XX**

SUB-W LEVEL	-15 to +15 (0):	Adjusts the subwoofer output level.
BASS LEVEL	-8 to +8 (0):	
MID LEVEL	-8 to +8 (0):	Adjusts the level to memorize for each source. (Before making an adjustment, select the source you want to adjust.)
TRE LEVEL	-8 to +8 (0):	

EQ PRO (for KDC-X497)

BASS ADJUST	BASS CTR FRQ	60/ 80/ 100/ 200: Selects the center frequency.
	BASS LEVEL	-8 to +8 (0): Adjusts the level.
	BASS Q FACTOR	1.00/ 1.25/ 1.50/ 2.00: Adjusts the quality factor.
	BASS EXTEND	ON: Turns on the extended bass. ; OFF: Cancels.
MID ADJUST	MID CTR FRQ	0.5K/ 1.0K/ 1.5K/ 2.5K: Selects the center frequency.
	MID LEVEL	-8 to +8 (0): Adjusts the level.
	MID Q FACTOR	0.75/ 1.00/ 1.25: Adjusts the quality factor.
TRE ADJUST	TRE CTR FRQ	10.0K/ 12.5K/ 15.0K/ 17.5K: Selects the center frequency.
	TRE LEVEL	-8 to +8 (0): Adjusts the level.

PRESET EQ **NATURAL/ USER/ ROCK/ POPS/ EASY/ TOP40/ JAZZ/ POWERFUL:** Selects a preset equalizer suitable to the music genre. (Select **[USER]** to use the customized bass, middle, and treble settings.)

BASS BOOST **B.BOOST LV1/ B.BOOST LV2/ B.BOOST LV3:** Selects your preferred bass boost level. ; **OFF:** Cancels.

LOUDNESS **LOUDNESS LV1/ LOUD LV1/ LOUDNESS LV2/ LOUD LV2:** Selects your preferred low and high frequencies boost to produce a well-balanced sound at a low volume level. ; **OFF:** Cancels.

BALANCE **L15 to R15 (0):** Adjusts the left and right speaker output balance.

FADER **R15 to F15 (0):** Adjusts the rear and front speaker output balance.

SUBWOOFER SET/ SUB-W SET **ON:** Turns on the subwoofer output. ; **OFF:** Cancels.

DETAILED SET/ DETAIL SET

HPF **THROUGH:** All signals are sent to the speakers. ; **100HZ/ 120HZ/ 150HZ:** Audio signals with frequencies higher than 100 Hz/ 120 Hz/ 150 Hz are sent to the speakers.

LPF SUBWOOFER/ LPF SUB-W **THROUGH:** All signals are sent to the subwoofer. ; **85HZ/ 120HZ/ 160HZ:** Audio signals with frequencies lower than 85 Hz/ 120 Hz/ 160 Hz are sent to the subwoofer.

SUB-W PHASE **REVERSE/ REV (180°)/ NORMAL/ NORM (0°):** Selects the phase of the subwoofer output to be in line with the speaker output for optimum performance. (Selectable only if a setting other than **[THROUGH]** is selected for **[LPF SUBWOOFER]/ [LPF SUB-W].**)

SUPREME SET **ON:** Creates realistic sound by interpolating the high-frequency components that are lost in AAC/MP3/WMA audio compression. ; **OFF:** Cancels. (Selectable only when playing back an AAC/MP3/WMA disc or a USB device, except iPhone/iPod.)

VOLUME OFFSET/ VOL OFFSET (Default: **0**) **-8 to +8 (for AUX); -8 to 0 (for other sources):** Presets the volume adjustment level of each source. (Before adjustment, select the source you want to adjust.)

- **[SUB-W LEVEL]/ [LPF SUB-W]/ [SUB-W PHASE]** is selectable only if **[SUB-W SET]** is set to **[ON]**.

DISPLAY SETTINGS

- 1 Press the volume knob to enter [FUNCTION].
 - 2 Turn the volume knob to select [SETTINGS], then press the knob.
 - 3 Turn the volume knob to make a selection (see the following table), then press the knob.
Repeat step 3 until the desired item is selected or activated.
 - 4 Press and hold ↵ to exit.
- To return to the previous hierarchy, press ↵.

Default: **XX**

DISP & KEY	
COLOR SELECT/ COLOR SEL	VARIABLE SCAN/VARI SCAN/ COLOR 01 — COLOR 24/USER: Selects your preferred key illumination color. You can create your own color (when [COLOR 01] — [COLOR 24] or [USER] is selected). The color you have created can be selected when you select [USER]. <ol style="list-style-type: none">1 Press and hold the volume knob to enter the detailed color adjustment.2 Press ◀◀ / ▶▶ to select the color (R/G/B) to adjust.3 Turn the volume knob to adjust the level (0 — 9), then press the knob.
DISP DIMMER	ON: Dims the display illumination. ; OFF: Cancels.
TEXT SCROLL	AUTO/ ONCE: Selects whether to scroll the display information automatically, or scroll only once. ; OFF: Cancels.
KEY DIMMER	DIMMER LV1: Dims the key illumination. ; DIMMER LV2: Dims the key illumination darker than DIMMER LV1. ; DIMMER OFF: Cancels.

MORE INFORMATION

General

- This unit can only play the following CDs:



- Detailed information and notes about the playable audio files are stated in an online manual on the following site:
www.kenwood.com/cs/ce/audiofile/

Playable files

- Playable Audio file: AAC (.m4a), MP3 (.mp3), WMA (.wma)
- Playable disc media: CD-R/RW/ROM
- Playable disc file formats: ISO 9660 Level 1/2, Joliet, Romeo, Long file name.
- Playable USB device file system: FAT16, FAT32
Although the audio files are complied with the standards listed above, playback may be impossible depending on the types or conditions of media or device.

Unplayable discs

- Discs that are not round.
- Discs with coloring on the recording surface or discs that are dirty.
- Recordable/ReWritable discs that have not been finalized.
- 8 cm CD. Attempting to insert using an adapter may cause malfunction.

About USB devices

- This unit can play AAC/MP3/WMA files stored on a USB mass storage class device.
- You cannot connect a USB device via a USB hub and Multi Card Reader.
- Connecting a cable whose total length is longer than 5 m may result in abnormal playback.
- This unit cannot recognize a USB device whose rating is other than 5 V and exceeds 1 A.

About iPod/iPhone

Made for

- iPod touch (1st, 2nd, 3rd, and 4th generation)
- iPod classic
- iPod with video
- iPod nano (1st, 2nd, 3rd, 4th, 5th, and 6th generation)
- iPhone, iPhone 3G, 3GS, 4, 4S
- For the latest compatible list and software versions of iPhone/iPod, see:
www.kenwood.com/cs/ce/ipod
- If you start playback after connecting the iPod, the music that has been played by the iPod is played first.
In this case, "RESUMING" is displayed without displaying a folder name, etc.
Changing the browse item will display the correct title, etc.
- You cannot operate iPod if "KENWOOD" or "✓" is displayed on iPod.

About HD Radio™ Technology

PSD)

- Program Service Data provides song name, artist, station ID, and other relevant data streams.

HD2/HD3)

- Adjacent to traditional main stations are HD2/HD3 Channels, providing new original formats on the FM dial.

Digital Sound)

- HD Radio broadcasts deliver crystal clear, CD-like digital audio quality to consumers.

iTunes® Tagging)

- iTunes® Tagging provides users the means to "tag" broadcast radio content for later review and purchase from the iTunes® Store.

About KENWOOD Music Editor Light and KENWOOD Music Control

- This unit supports the PC application KENWOOD Music Editor Light and Android™ application KENWOOD Music Control.
- When you play audio files with song data added using the KENWOOD Music Editor Light or KENWOOD Music Control, you can search for audio files by Genres, Artists, Albums, Playlists, and Songs.
- KENWOOD Music Editor Light and KENWOOD Music Control are available from the following web site: www.kenwood.com/cs/ce/

TROUBLESHOOTING

Symptom	Remedy
Sound cannot be heard.	<ul style="list-style-type: none"> Adjust the volume to the optimum level. Check the cords and connections.
“PROTECT” appears and no operations can be done.	Check to be sure the terminals of the speaker wires are insulated properly, then reset the unit. If this does not solve the problem, consult your nearest service center.
<ul style="list-style-type: none"> Sound cannot be heard. The unit does not turn on. Information shown on the display is incorrect. 	Clean the connectors. (→ 2)
The unit does not work at all.	Reset the unit. (→ 3)
<ul style="list-style-type: none"> Radio reception is poor. Static noise while listening to the radio. 	<ul style="list-style-type: none"> Connect the antenna firmly. Pull the antenna out all the way.
“MEMORY FULL” appears.	The tag memory of HD Radio receiver is full.
“NO TAG FNC” appears.	The connected iPod does not support iTunes tagging function.
“TAG ERROR” appears.	The unit is unable to complete transferring the tagged information to the iPod.
“NA FILE” appears.	Make sure the device contains supported audio files. (→ 10)
“NO DISC” appears.	Insert a playable disc into the loading slot.
“TOC ERROR” appears.	Make sure the disc is clean and inserted properly.
“PLEASE EJECT”/“PLS EJECT” appears.	Reset the unit. If this does not solve the problem, consult your nearest service center.
Disc cannot be ejected.	Press and hold ▲ to forcibly eject the disc. Be careful not to drop the disc when it is ejected. If this does not solve the problem, reset the unit. (→ 3)
“READ ERROR” appears.	Copy the files and folders onto the USB device again. If this does not solve the problem, reset the USB device or use another USB device.
“NO DEVICE” appears.	Connect a USB device, and change the source to USB again.

Symptom	Remedy	
“COPY PRO” appears.	A copy-protected file is played.	
“NO MUSIC” appears.	Connect a USB device that contains playable audio files.	
“NA DEVICE” appears.	Connect a supported USB device, and check the connections.	
“USB ERROR” appears.	<ul style="list-style-type: none"> Remove the USB device, turn the unit off, then turn it on again. Try to connect another USB device. 	
“iPod ERROR” appears.	<ul style="list-style-type: none"> Reconnect the iPod. Reset the iPod. 	
Noise is generated.	Skip to another track or change the disc.	
Tracks do not play back as you have intended them to play.	Playback order is determined when files are recorded.	
“READING” keeps flashing.	Do not use too many hierarchical levels or folders.	
Elapsed playing time is not correct.	This is caused by how the tracks are recorded.	
The number of songs contained in the “SONGS” category of this unit is different from the iPod/iPhone.	Podcast files are not counted on this unit as this unit does not support the playback of podcast files.	
Correct characters are not displayed (e.g. album name).	This unit can only display uppercase letters, numbers, and a limited number of symbols.	
Pandora	<ul style="list-style-type: none"> “ADD ERROR”/“ADD ERR” “SEARCH ERROR”/“SEARCH ERR” 	New station creation is unsuccessful.
	“CHECK DEVICE”/“CHK DEVICE”	Check the Pandora application on your device.
	“NO SKIPS”	The skip limit has been reached.
	“NO STATIONS”	No station is found.
	“STATION LIMIT”/“STATION LIM”	The number of registered stations has reached its limit. Retry after deleting an unnecessary station on your device.
“UPGRADE APP”	Make sure you have installed the latest version of the Pandora application on your device.	

⚠ Warning

- The unit can only be used with a 12 V DC power supply, negative ground.
- Disconnect the battery's negative terminal before wiring and mounting.
- Do not connect Battery wire (yellow) and Ignition wire (red) to the car chassis or Ground wire (black) to prevent a short circuit.
- Insulate unconnected wires with vinyl tape to prevent a short circuit.
- Be sure to ground this unit to the car's chassis again after installation.

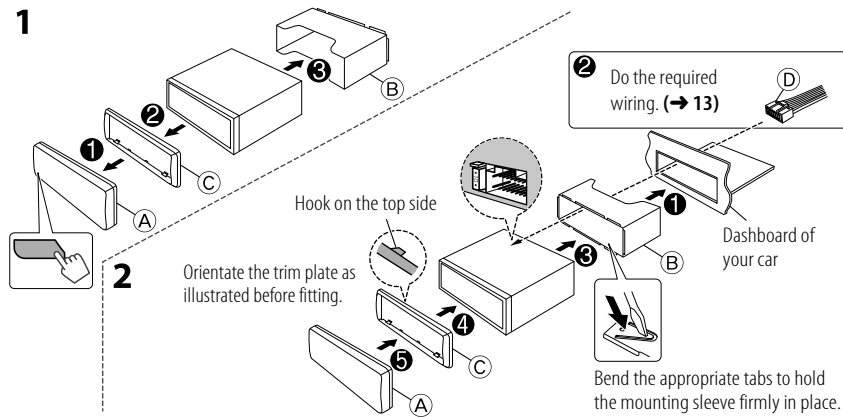
⚠ Caution

- For safety's sake, leave wiring and mounting to professionals. Consult the car audio dealer.
- Install this unit in the console of your vehicle. Do not touch the metal parts of this unit during and shortly after use of the unit. Metal parts such as the heat sink and enclosure become hot.
- Do not connect the \ominus wires of speaker to the car chassis, Ground wire (black), or in parallel.
- Mount the unit with the angle of 30° or less.
- If your vehicle wiring harness does not have the ignition terminal, connect Ignition wire (red) to the terminal on the vehicle's fuse box which provides 12 V DC power supply and is turned on and off by the ignition key.
- After the unit is installed, check whether the brake lamps, blinkers, wipers, etc. on the car are working properly.
- If the fuse blows, first make sure the wires are not touching car's chassis, then replace the old fuse with one that has the same rating.

Basic procedure

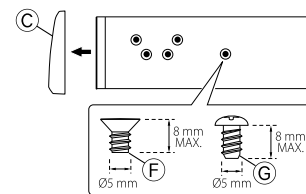
- 1 Remove the key from the ignition switch, then disconnect the \ominus terminal of the car battery.
- 2 Connect the wires properly.
See Wiring connection. (→ 13)
- 3 Install the unit to your car.
See Installing the unit (in-dash mounting).
- 4 Connect the \ominus terminal of the car battery.
- 5 Reset the unit. (→ 3)

Installing the unit (in-dash mounting)



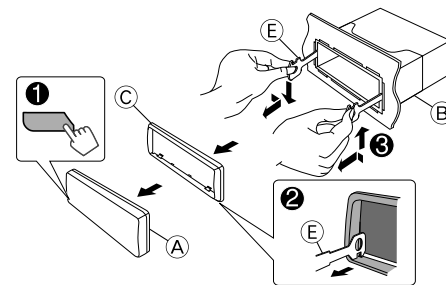
When installing without the mounting sleeve

- 1 Remove the mounting sleeve and trim plate from the unit.
- 2 Align the holes in the unit (on both sides) with the vehicle mounting bracket and secure the unit with the supplied screws.

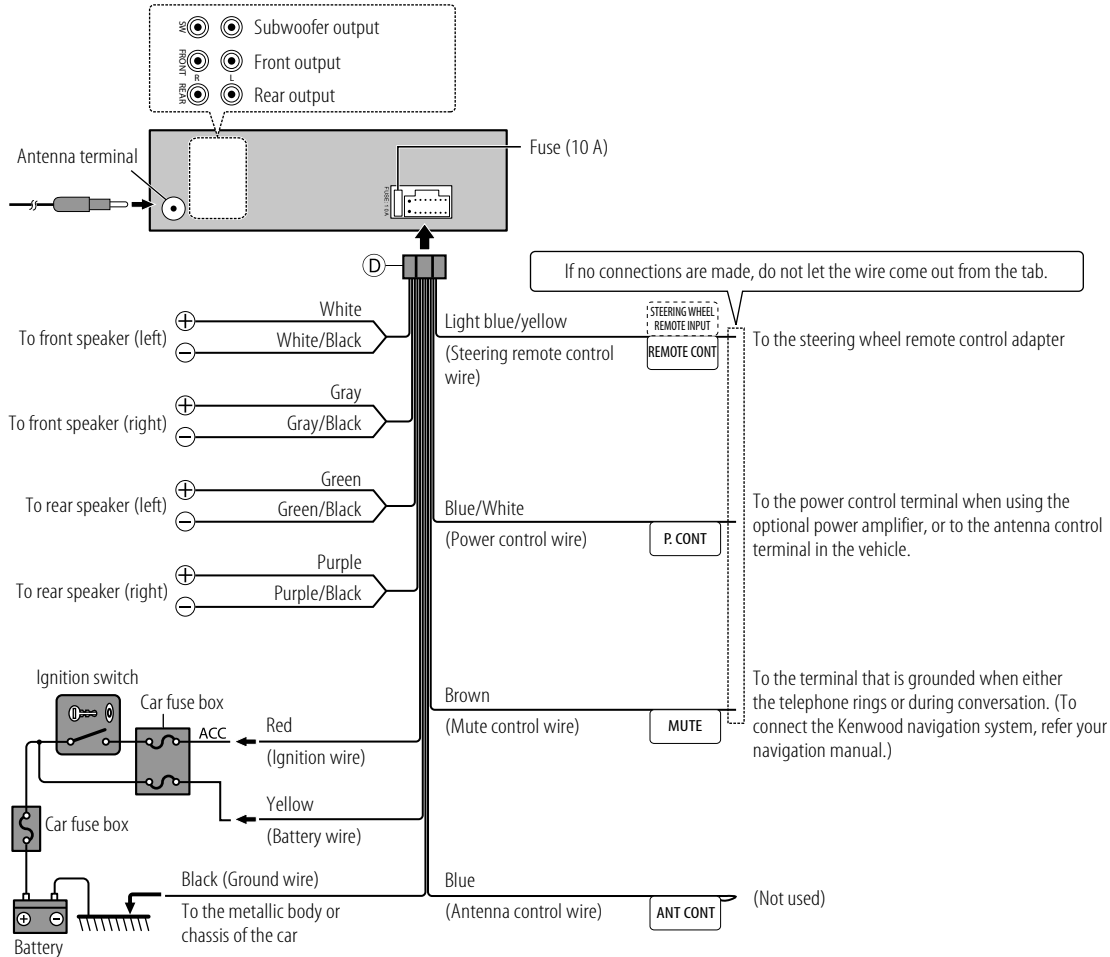


How to remove the unit

- 1 Detach the faceplate.
- 2 Fit the catch pin on the extraction keys into the holes on both sides of the trim plate, then pull it out.
- 3 Insert the extraction keys deeply into the slots on each side, then follow the arrows as shown on the right.



Wiring connection



Part list for installation

- A Faceplate (×1)
- B Mounting sleeve (×1)
- C Trim plate (×1)
- D Wiring harness (×1)
- E Extraction key (×2)
- F Flat head screw (×4)
- G Round head screw (×4)