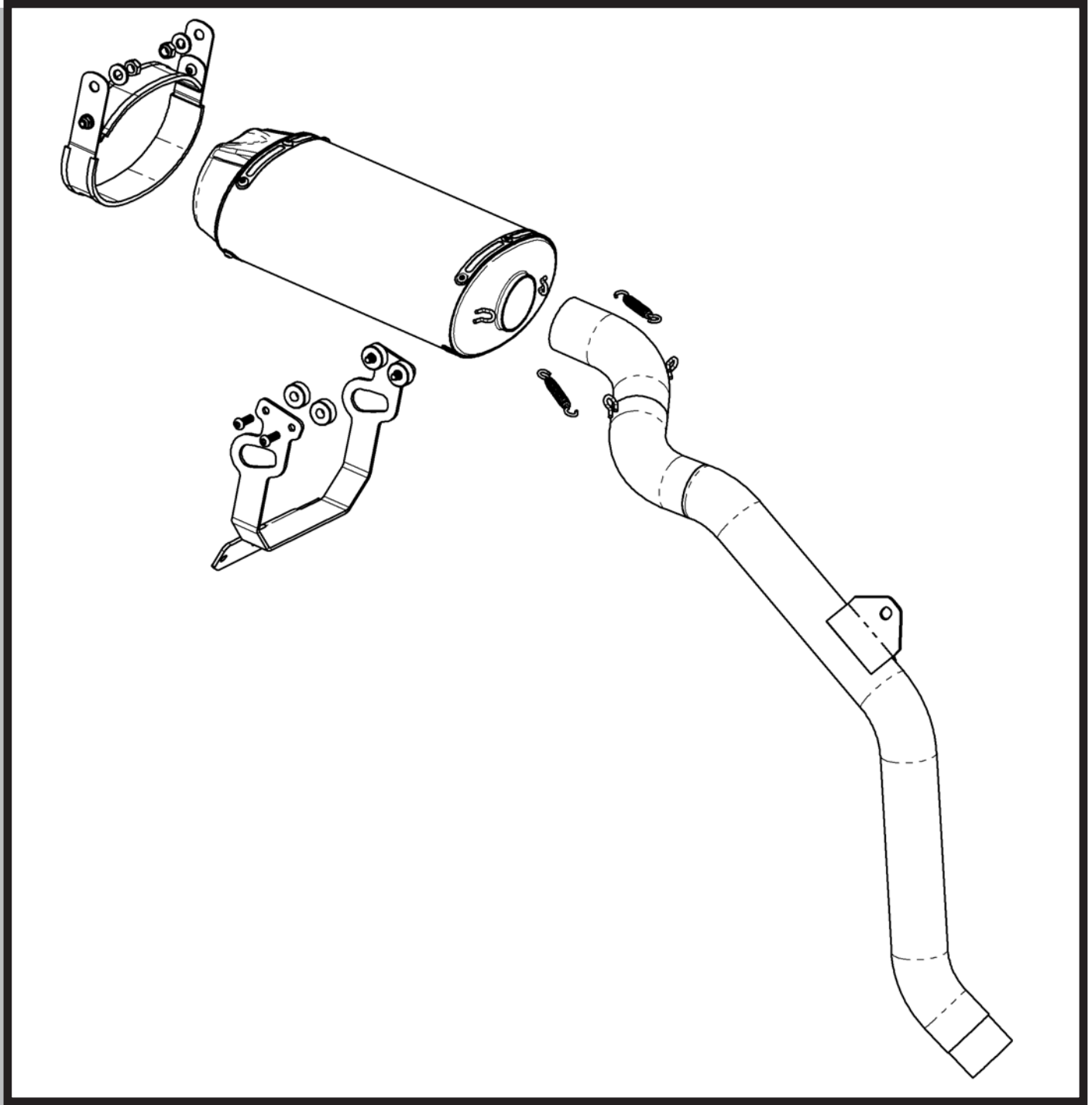




18-3015-624-02

RT1 DUAL OUTLET SLIP-ON EXHAUST

KAWASAKI ZX-6R
2005-06



08-50-43143 REV. B

PERFORMANCE DELIVERED!

18-3015-624-02

RT1 DUAL OUTLET SLIP-ON EXHAUST

KAWASAKI ZX-6R
2005-06

PARTS INCLUDED

Ref.	Part Number	Description	Qty
1)	00-200-00055	Slip-on S-bend Assembly	1
2)	00-200-00059	Titanium Dual Outlet Muffler	1
3)	04-24-24787	Supersport Fender Bracket	1
4)	04-18-37156	Fender Bracket Mounting Spacer	4
5)	03-46-42785	Muffler Mounting Bracket, Lower	1
6)	03-46-42786	Muffler Mounting Bracket, Upper	1
7)	07-27-42788	Muffler Strap Silicone Rubber Sleeve, 10.5"	1
8)	07-27-42789	Muffler Strap Silicone Rubber Sleeve, 7"	1
9)	04-25-41657	Exhaust Servo Bracket	1
10)	07-41-40004	Swivel Spring, Short	2
11)	01-5106100020-SS	M6-1.0x20mm Socket Button Head Bolt	4
12)	01-5106100012-SS	M6-1.0x12mm Socket Button Head Bolt	2
13)	01-0305080010-SS	M5-0.8x10mm Socket Low Head Bolt	1
14)	01-7008125-27	M8-1.25 Hex Nylock Nut	2
15)	01-7006100-27	M6-1.0 Hex Nylock Nut	2
16)	01-7808-27	8mm Flat Washer	2
17)	01-7806-27	6mm Flat Washer	2

TOOLS REQUIRED

Ref.	Description	Ref.	Description
1)	3/8" Drive Ratchet	8)	4mm Allen Socket
2)	3" Extension	9)	5mm Allen Socket
3)	8mm Socket	10)	8mm Allen Socket
4)	10mm Socket	11)	10mm Wrench
5)	12mm Socket	12)	13mm Wrench
6)	Phillips Screwdriver	13)	Torque Wrench
7)	3mm Allen Socket	14)	Spring Pull Tool or Needlenose Pliers

INSTALLATION INSTRUCTIONS

NOTE: THERE IS A GOOD CHANCE YOU WILL NEED TO REPLACE THE EXHAUST GASKET ON THE HEADPIPE OUTLET TO JARDINE S-BEND CONNECTION. WE RECOMMEND PURCHASING ONE PRIOR TO BEGINNING THE INSTALLATION.

- 1) Make sure the motorcycle is cool and place securely on a service lift or stand.

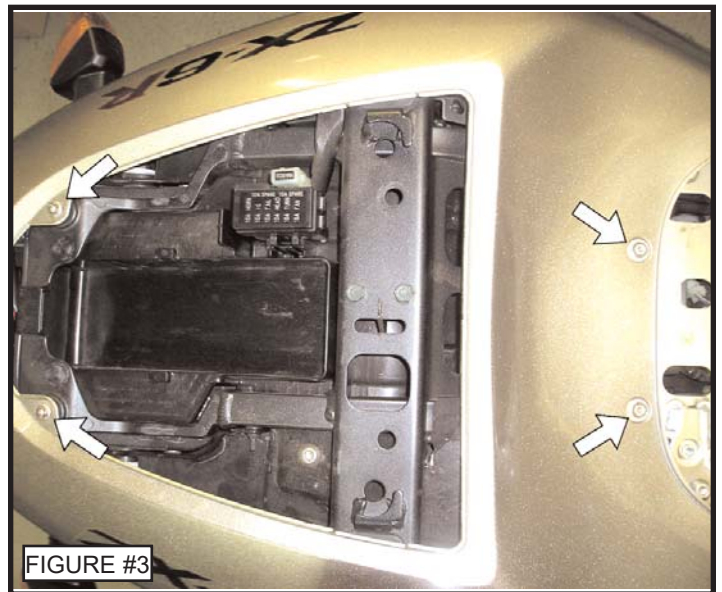
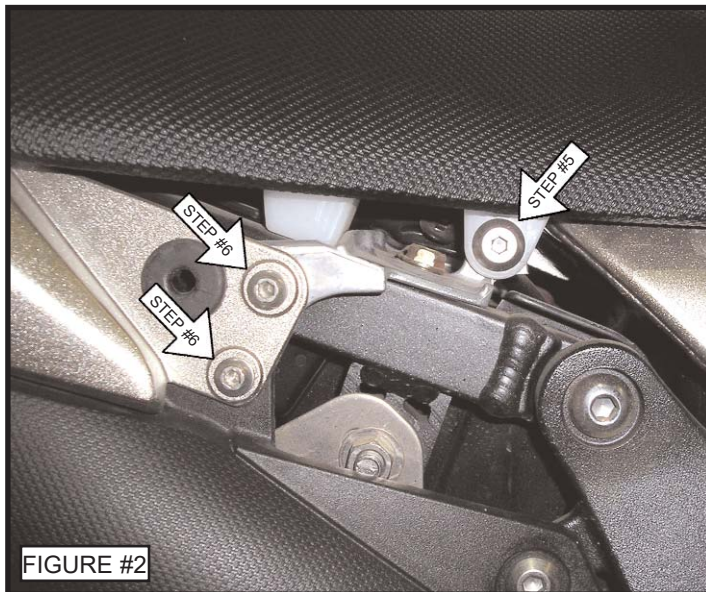
18-3015-624-02

RT1 DUAL OUTLET SLIP-ON EXHAUST

KAWASAKI ZX-6R
2005-06

INSTALLATION INSTRUCTIONS

- 2) Remove the indicated bolt from the right side cover and pull firmly on the cover to release it from the grommet securing it to the frame. See Figure #1
- 3) Remove the two bolts from the left side cover and pull firmly on the cover to release it from the grommet securing it to the frame.
- 4) Using the key, release and remove the passenger seat from the motorcycle.
- 5) Remove the indicated bolt from both sides of the rider seat. Remove the rider seat. See Figure #2
- 6) Remove the indicated bolts from the front of the tail section. See Figure #2
NOTE: The left side uses only one bolt.
- 7) Remove the four indicated bolts from the tail section. See Figure #3
- 8) Depress and remove the three indicated push pin fasteners on the left side of the tail section. See Figure #4



PERFORMANCE DELIVERED!

18-3015-624-02

RT1 DUAL OUTLET SLIP-ON EXHAUST

KAWASAKI ZX-6R
2005-06

INSTALLATION INSTRUCTIONS

9) Carefully spread and remove the tail section from the sub frame.

NOTE: The tail light plug must be disconnected while removing the tail section.

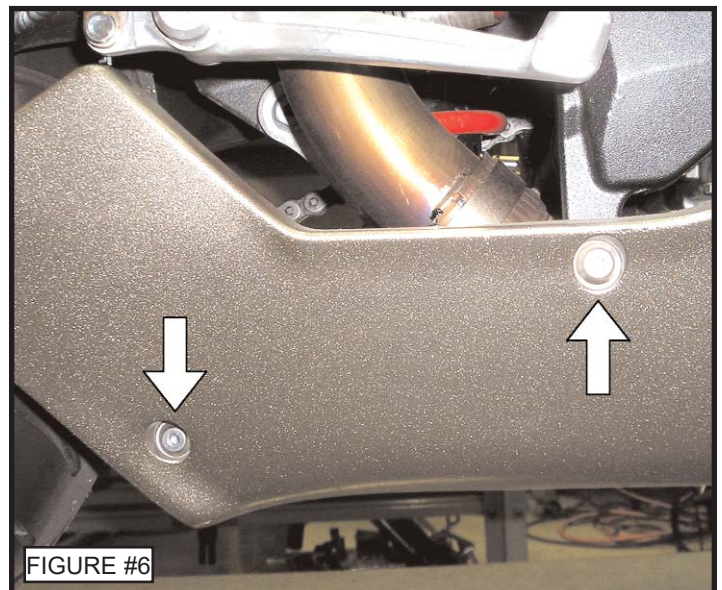
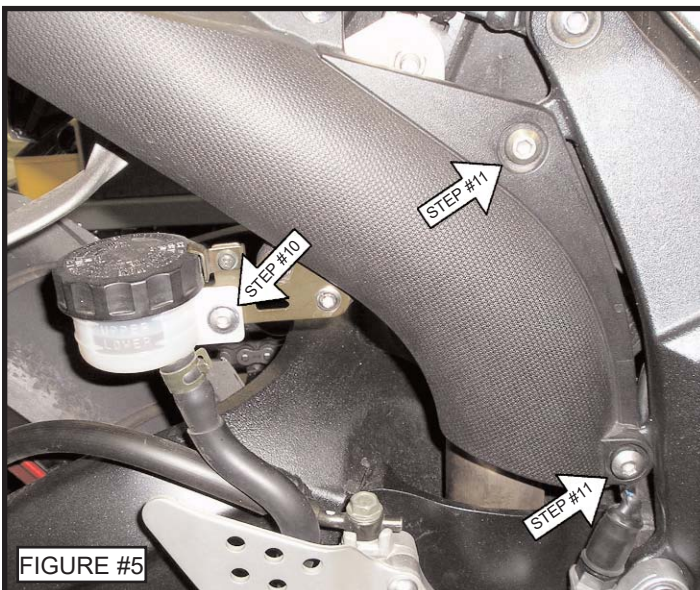
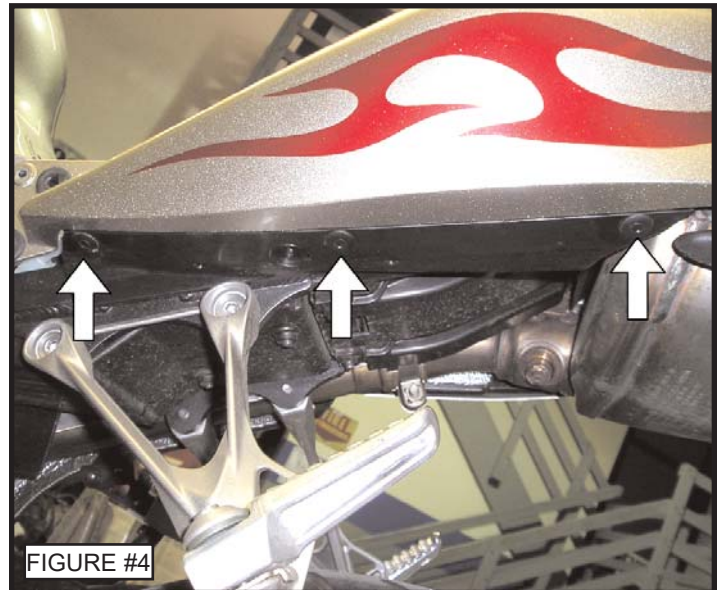
10) Remove the bolt securing the rear brake reservoir to the mounting bracket. It is okay to allow the reservoir to dangle. See Figure #5

11) Remove the two indicated bolts from the plastic lower s-bend cover. Remove the cover. See Figure #5

12) Remove the two indicated bolts from the right side lower fairing. See Figure #6

13) Remove the five push pin fasteners running along the center of the lower fairings.

14) Remove the two bolts securing the right side rider peg to the motorcycle frame. Carefully pull the rider peg assembly away from the frame. See Figure #7



PERFORMANCE DELIVERED!

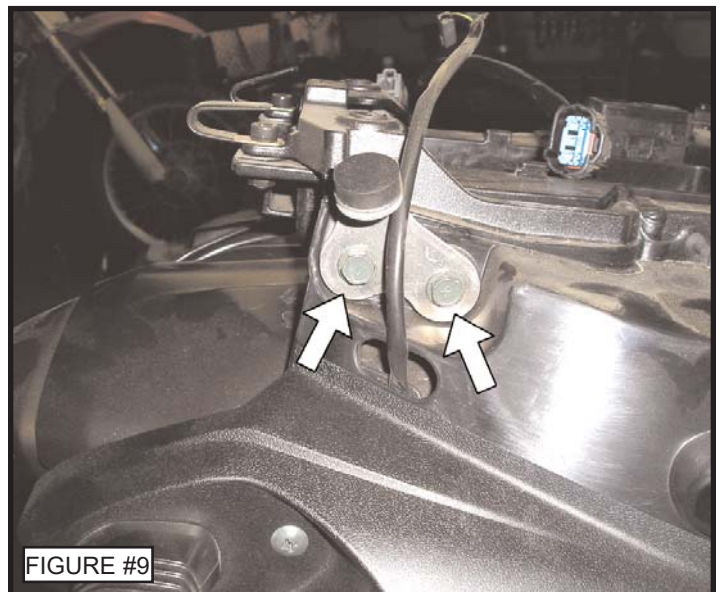
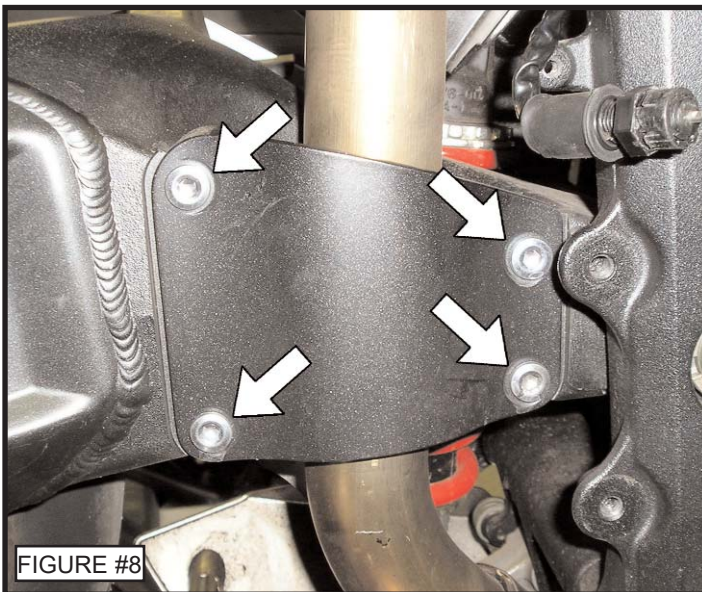
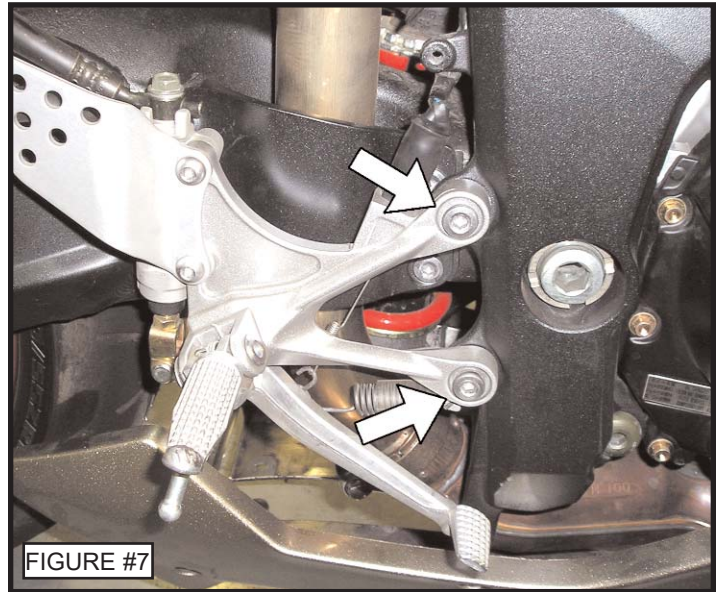
18-3015-624-02

RT1 DUAL OUTLET SLIP-ON EXHAUST

KAWASAKI ZX-6R
2005-06

INSTALLATION INSTRUCTIONS

- 15) Remove the brake light switch return spring. Remove the brake light switch from the rider peg bracket. Set the rider peg assembly down.
- 16) Remove the four bolts securing the black s-bend guard to the swingarm. Remove the guard. See Figure #8
- 17) Disconnect the license plate and turn signal wires. Make note of the turn signal connector colors.
- 18) Remove the four nuts securing the license plate/turn signal bracket to the bottom of the muffler.
- 19) Remove the two indicated bolts and support bracket from each side of the sub frame. See Figure #9
- 20) Remove the license plate/turn signal bracket assembly from the motorcycle.



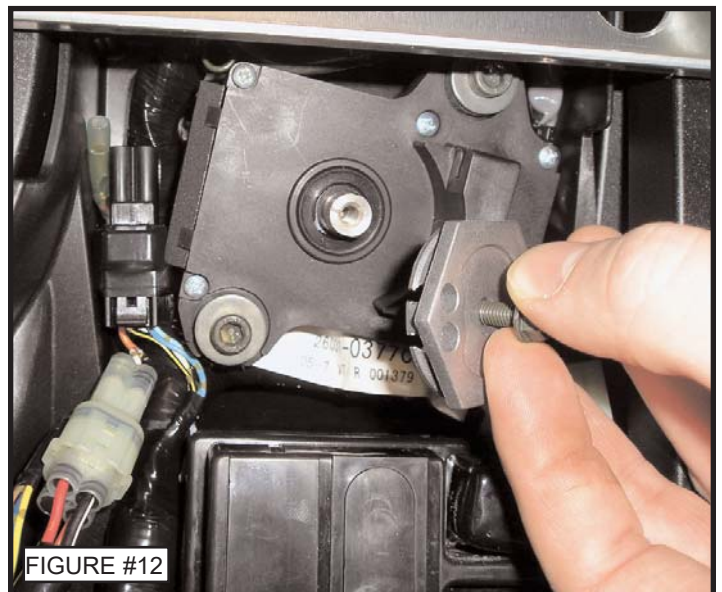
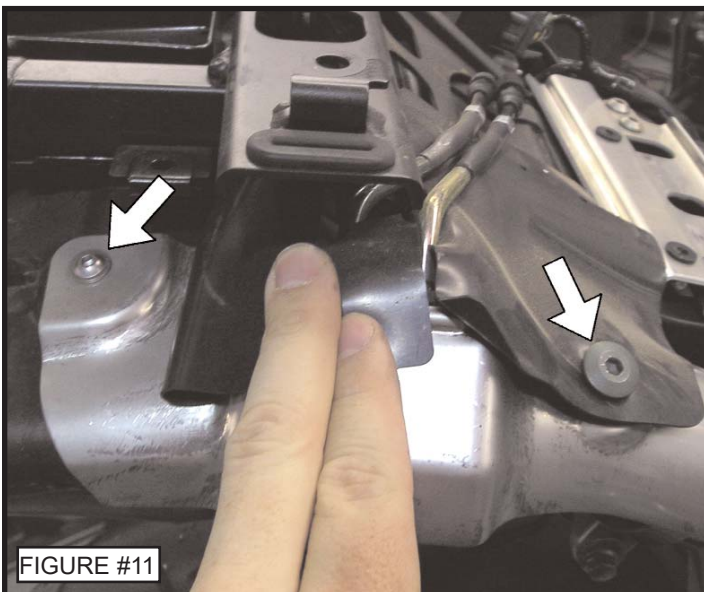
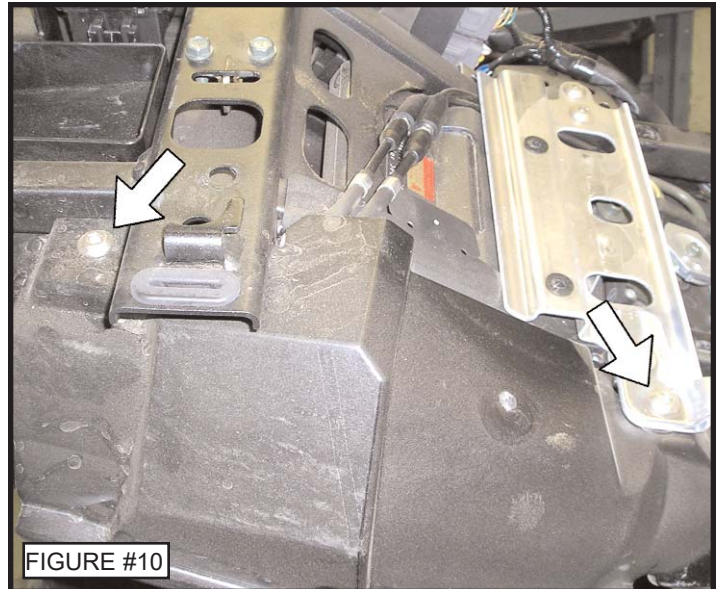
18-3015-624-02

RT1 DUAL OUTLET SLIP-ON EXHAUST

KAWASAKI ZX-6R
2005-06

INSTALLATION INSTRUCTIONS

- 21) Remove the two bolts from the upper s-bend cover. Remove the cover. See Figure #10
- 22) Remove the two indicated bolts securing the s-bend heat shield to the s-bend. Remove the heat shield. See Figure #11
- 23) Remove the retaining bracket from the exhaust butterfly servo. Remove the two cables connecting the servo to the butterfly valve on the s-bend.
- 24) Remove the bolt securing the cable stay to the servo. See Figure #12
- 25) Take note of the line on top of the servo shaft. This line must be facing away from the stop block. If it is not facing away from the stop block, using your key, turn the ignition to the "on" position and the servo will rotate. Turn off the ignition when the line is facing away from the block. See Figure #13



PERFORMANCE DELIVERED!

18-3015-624-02

RT1 DUAL OUTLET SLIP-ON EXHAUST

KAWASAKI ZX-6R
2005-06

INSTALLATION INSTRUCTIONS

26) Place the supplied aluminum bracket onto the servo shaft as shown. Secure the bracket to the servo shaft using the supplied M5-0.8x10mm socket low head bolt. See Figure #14

27) Loosen the muffler inlet clamp bolt.

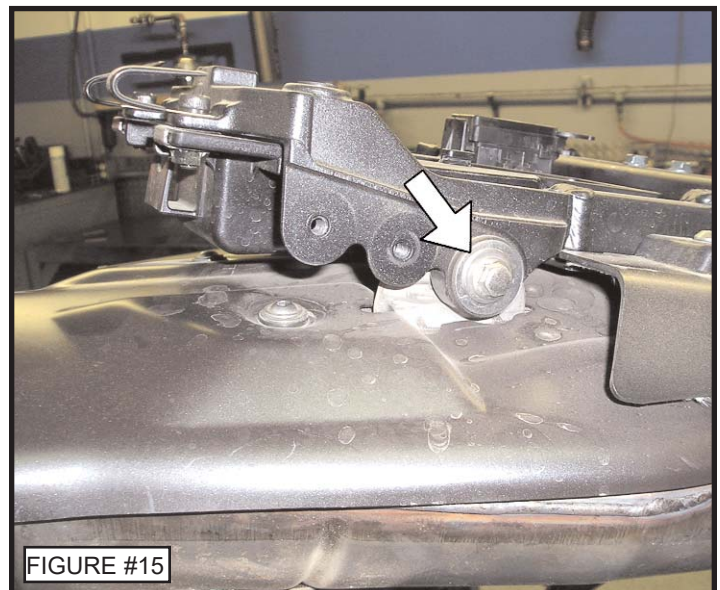
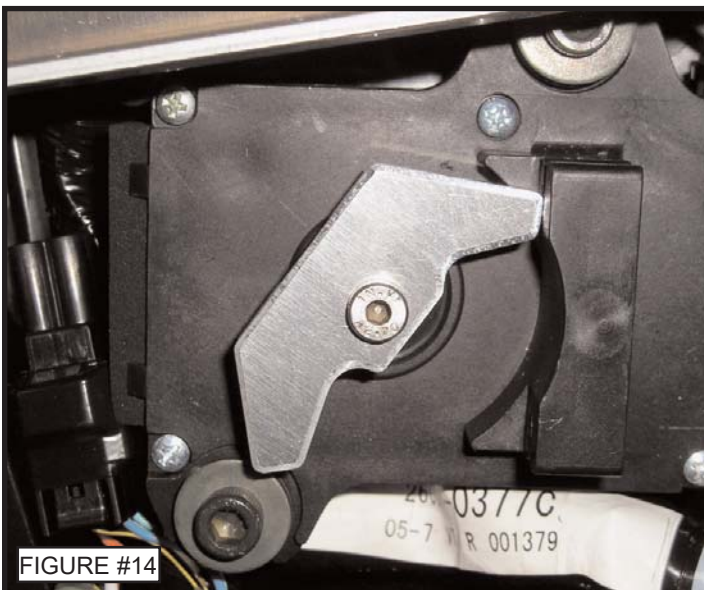
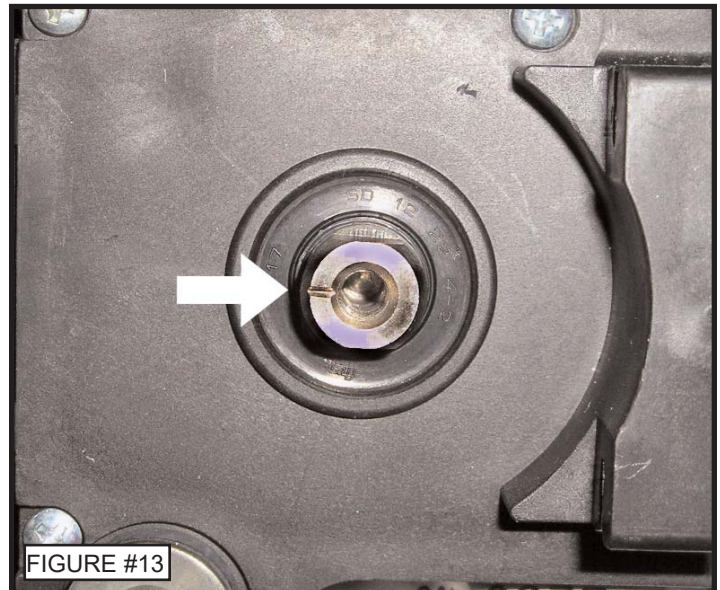
28) Remove the right & left muffler mounting bolts. Remove the stock muffler from the motorcycle. See Figure #15

29) Remove the right side passenger footpeg.

30) Remove the s-bend mounting bracket nut. Loosen the lower s-bend clamp bolts. Remove the s-bend from the motorcycle.

NOTE: Remove and inspect the headpipe outlet gasket. Place the used or new gasket onto the Jardine s-bend inlet.

31) Slide the new Jardine s-bend inside the headpipe outlet and place the mounting bracket over the original s-bend mounting bolt. Secure the s-bend using the original clamp and nut. Do not fully tighten at this time. See Figure #17



PERFORMANCE DELIVERED!

18-3015-624-02

RT1 DUAL OUTLET SLIP-ON EXHAUST

KAWASAKI ZX-6R
2005-06

INSTALLATION INSTRUCTIONS

- 32)** Slide the new Jardine muffler onto the s-bend outlet until fully seated. Attach the two supplied spring to the muffler/s-bend connection.
- 33)** Attach the provided 10.5" silicone rubber sleeve to the inside of the lower muffler mounting clamp.
- 34)** Using the original muffler mounting bolts, as well as the provided M8-1.25 hex nylock nuts and 8mm flat washers, "cradle" the dual outlet muffler and loosely mount the lower muffler mounting bracket to the original muffler mounting point on the sub frame. See Figure #18
- 35)** Attach the provided 7" silicone rubber sleeve to the inside of the upper muffler mounting clamp.

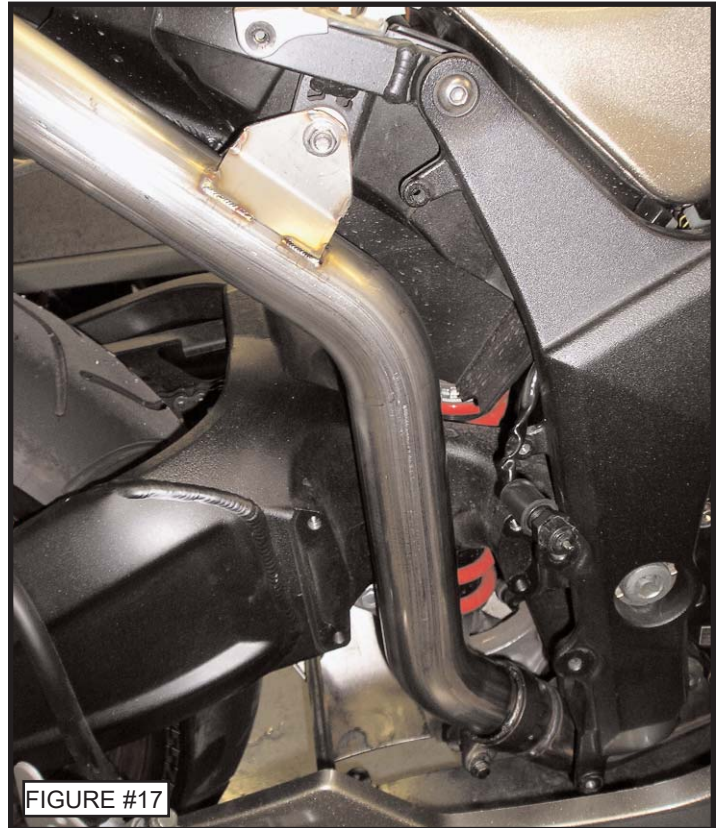


FIGURE #17

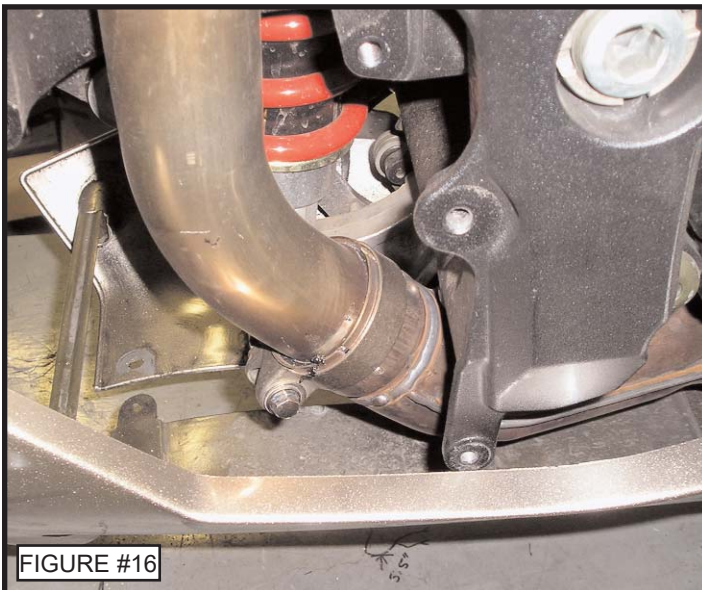


FIGURE #16

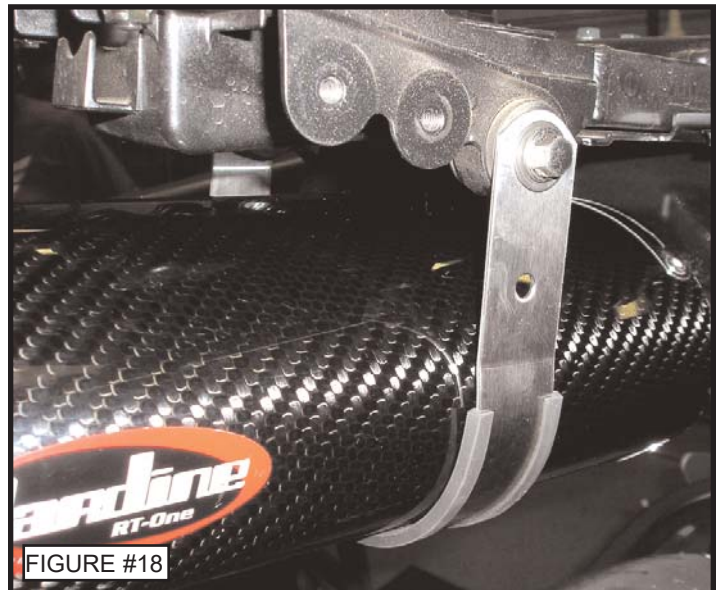


FIGURE #18

PERFORMANCE DELIVERED!

18-3015-624-02

RT1 DUAL OUTLET SLIP-ON EXHAUST

KAWASAKI ZX-6R
2005-06

INSTALLATION INSTRUCTIONS

36) Place the upper mounting strap between the lower strap mounting tabs and secure using the provided M6-1.0x12mm socket button head bolts, M6-1.0 hex nylock nuts, and 6mm flat washers. See Figure #19

NOTE: For ease, feed the button head bolts through the straps from the inside, as shown.

37) Position the exhaust system. Fully tighten all the muffler mounting bracketry, then the s-bend clamp and the s-bend mounting bracket.

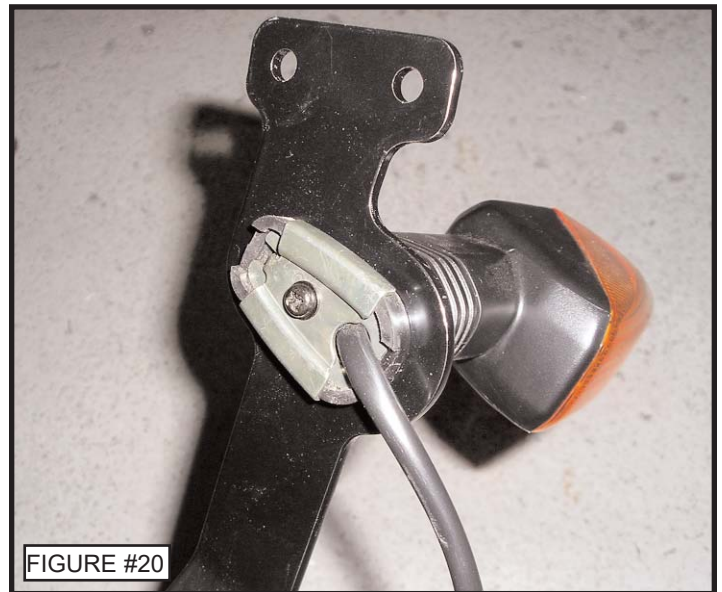
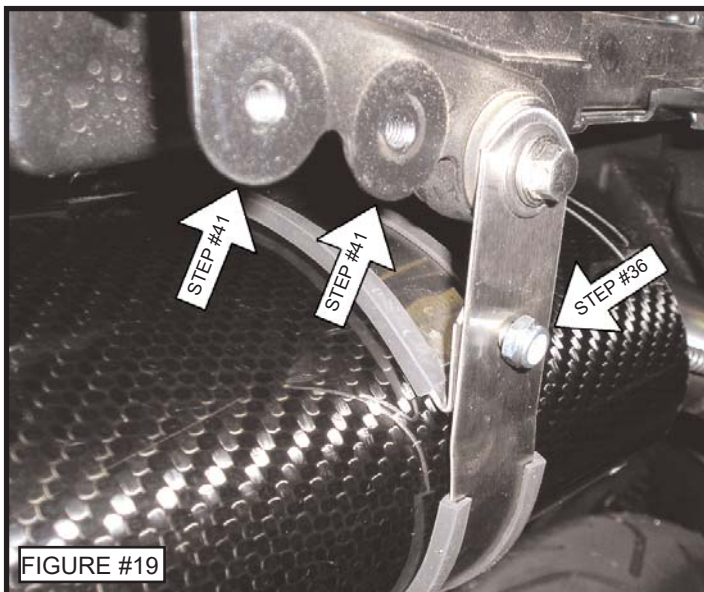
38) Clean all fingerprints and grease from the exhaust system. Start the motorcycle and check for any exhaust leaks.

WARNING: The longer you run the motor, the hotter the exhaust will get. Make sure the exhaust is cool enough to touch before finishing the installation.

39) Remove the left & right turn signals from the original turn signal bracket.

40) Mount the turn signals to the Supersport Fender Bracket using the original bracketry and short phillips screw. See Figure #20

41) Place the provided fender bracket mounting spacers between the sub frame and the fender bracket, and secure to the sub frame using the provided M6-1.0x20mm button head bolts. See Figure #19



18-3015-624-02

RT1 DUAL OUTLET SLIP-ON EXHAUST

KAWASAKI ZX-6R
2005-06

INSTALLATION INSTRUCTIONS

- 42) Route the turn signal wires up and into the sub frame and reconnect them to the proper color connectors.
- 43) Reinstall the right side passenger footpeg.
- 44) Reinstall the upper plastic s-bend guard. See Figure #10
- 45) Reinstall the black s-bend guard to the swingarm. See Figure #8
- 46) Attach the brake light switch and return spring to the rider peg assembly. Mount the rider peg assembly to the frame. See Figure #9
- 47) Reinstall the lower s-bend guard to the frame. Mount the rear brake reservoir to the mounting bracket.
- 48) Reconnect the tail light plug, then carefully spread and position the tail section onto the sub frame.
- 49) Secure the tail section to the sub frame using all original mounting bolts and push pin connectors.
- 50) Reinstall the rider seat.
- 51) Reinstall the passenger seat.
- 52) Reinstall the side covers.
- 53) Secure the lower fairing sections together using all push pin connector and hardware.

PERFORMANCE DELIVERED!

Learn more about motorcycle parts on our website.