

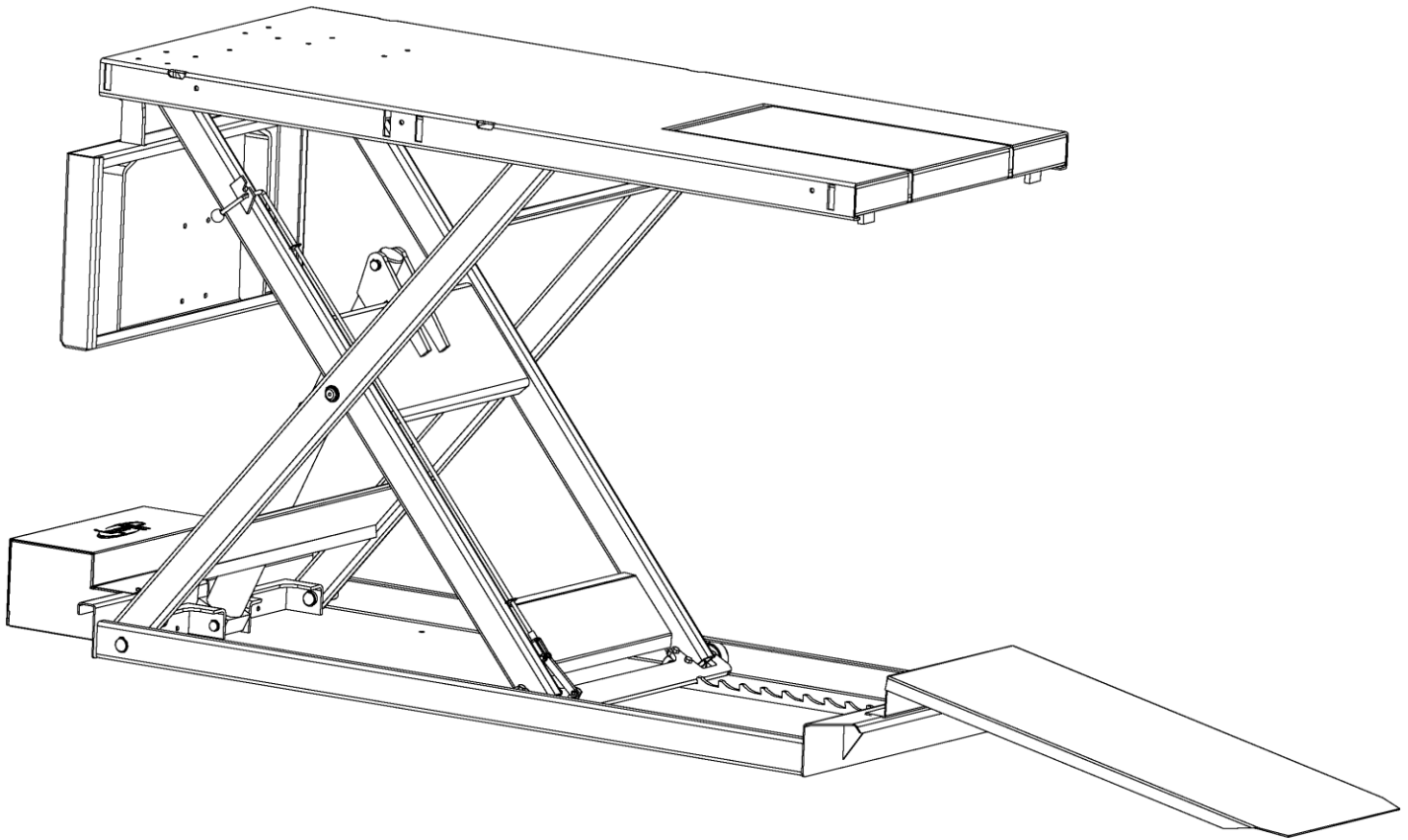


ELECTRIC HYDRAULIC LIFT

λ INSTRUCTIONS λ PARTS DRAWING λ PART LIST

ITEM # 20707G - 20707O - 20707R - 20707B

⚠ WARNING: READ INSTRUCTIONS BEFORE OPERATING



1. Operates on a 115 volt, 60 Hz. circuit only.
2. Do not remove ground prong from plug.
3. Center load on table - 1500 lbs. maximum.
4. Keep hands and tools from under carriage.
5. Do not mount table when in elevated position.
6. Do not ride vehicle onto lift.
7. Only trained persons should operate lift.
8. The working area should be sufficiently lit.
9. Recommended for indoor use only.
10. Tie-down straps must be used in conjunction with the holes provided in the lift top.

▲ NOTE: READ ENTIRE MANUAL TO COMPLY WITH ALL SAFETY AND SERVICE PRECAUTIONS. DEATH, PERSONAL INJURY AND/OR PROPERTY DAMAGE MAY OCCUR UNLESS INSTRUCTIONS ARE FOLLOWED CAREFULLY.

▲ POWER SUPPLY

This lift is for operation on 115 volt, 60 Hz current only. Check outlet voltage before plugging in equipment.

WARNING: This lift is equipped with a 3-prong plug which must be plugged into a grounded 115 volt, 60 Hz power supply for your safety. Removing ground prong from plug or failure to plug into a grounded receptacle may result in a fatal electric shock.

UNPACKING AND SET-UP

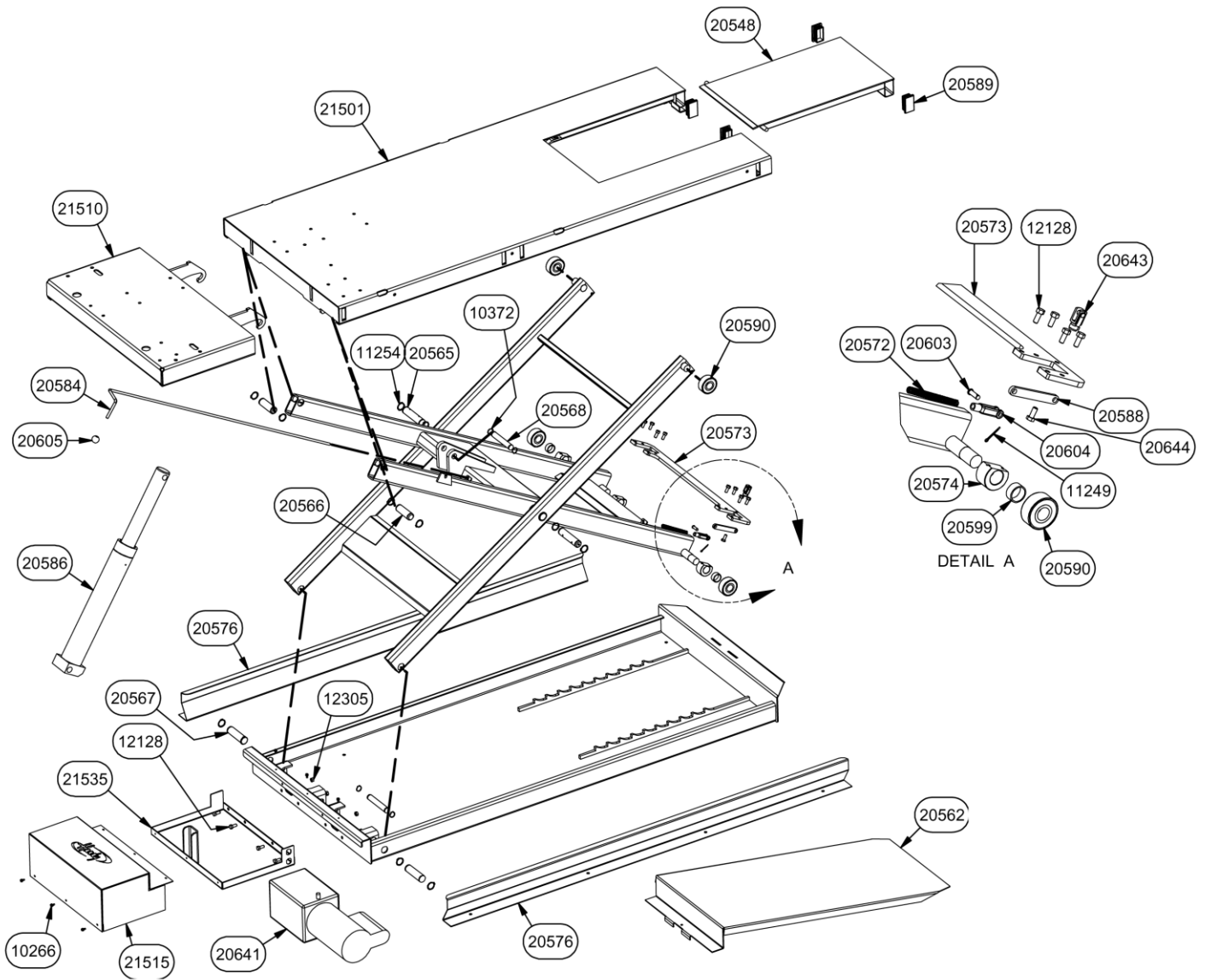
1. Remove cardboard top portion from lift. Inspect lift for any shipping damage.
2. Connect plug to 115 volt electrical source. Press up button on control pendant and raise the lift just enough so that the detent pawl will engage the first pair of teeth it passes over.
3. Check to insure that the detent pawl is now full engaged to the mating teeth on the base. Carefully remove the ramp stored between the lift frames. If necessary you may lift up and push the dropout forward into its storage position to give more room for removing the ramp. The ramp can now be placed aside until the lift is off the pallet and ready to use.
4. Locate and remove any lag screws that are holding the lift and foot guards to the pallet. It may be necessary to raise the lift higher to do this. Be sure detent pawl is engaged to the mating teeth before reaching into lift.
5. Set the two foot guards off to the side and then move the lift table off the pallet and onto the floor.
6. Raise the lift to a comfortable height then install the two foot guards to each side using 5/16-18 cap screws, locking washers, and nuts. (3 places each side)
7. Install the ramp at the dropout end using the slots located in the lift base.

OPERATION-LUBRICATION

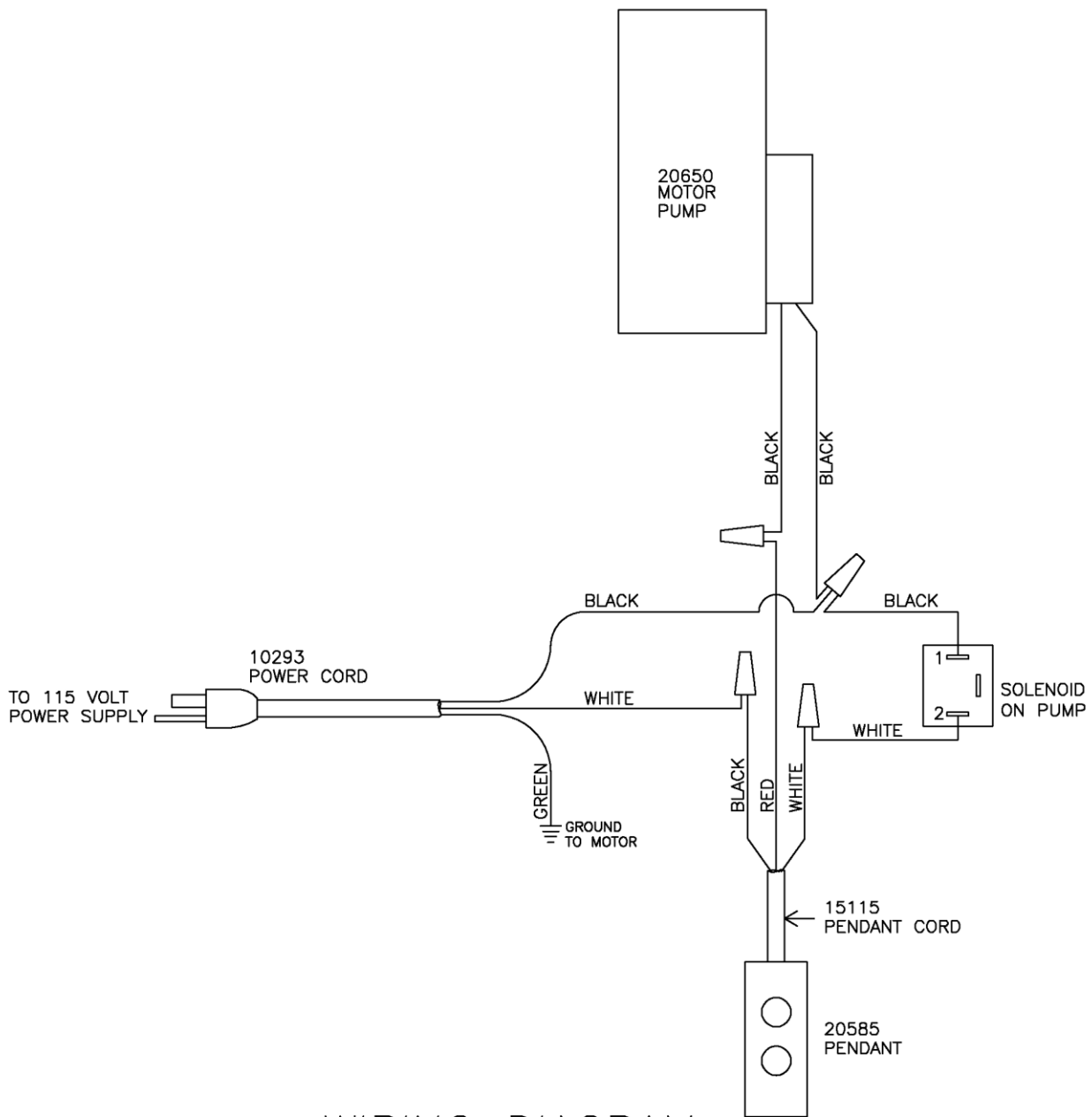
- ▲** 1. Loads must be centered on table at all times.
- ▲** 2. Loads must be firmly positioned on table at all times. Tie-down straps **must** be used in conjunction with the holes provided in the lift top.
3. Allow the spring loaded detent pawl to engage teeth while raising the lift. Be sure the detent pawl stays engaged with teeth while load is raised.
4. To lower, raise lift slightly to remove pressure on the pawl, then disengage by pulling rod into slot on the side of frame tube.
5. All moving parts have been lubricated at the factory and should be re-lubricated occasionally to prevent galling. Grease zerks are located at each end of frame pivot shaft.
6. The hydraulic system was filled at the factory with ATF and should not require further attention during normal lift usage.

OTHER OPTIONS AVAILABLE

| ITEM # | DESCRIPTION |
|--------|---|
| 16588 | CV-17 CYCLE VISE – Use to stabilize motorcycles while on lift |
| 20728 | 12" Side Extensions |



| QTY | PART No. | DESCRIPTION | QTY | PART No. | DESCRIPTION |
|-----|----------|---------------------------------|-----|----------|-------------------------------------|
| 6 | 10266 | SCREW 10-32 X 3/8 HWSLTCS"23 | 2 | 20586 | HYDRAULIC CYLINDER UNIT W/FLOW CTRL |
| 4 | 10372 | RING RETAINING 3/4 | 4 | 20589 | PLUG 2 1/2X1 1/2 16GA 1300032-ML03I |
| 1 | 11249 | PIN COTTER 1/8 X 7/8 PLATED | 4 | 20590 | BEARING ROLLER TRACK BRB5306-2RS |
| 12 | 11254 | RING RETAINING 1 | 1 | 20573 | DETENT PAWL PLATE |
| 2 | 11303 | GREASE ZERK | 4 | 20574 | DETENT PLATE MOUNT |
| 12 | 12128 | SCREW 5/16-18 X 3/4 HHCS GRADE | 1 | 20584 | DETENT CONTROL ROD |
| 4 | 12304 | WASHER 5/16 SPLIT LOCK | 1 | 20588 | DETENT CONTROL LINK |
| 4 | 12305 | HEX NUT 5/16-18 | 1 | 20603 | PIN CLEVIS 5/16 X 3/4 |
| 1 | 20548 | DROPOUT ASSY | 1 | 20604 | YOKE END 5/16-24 FEMALE |
| 2 | 20599 | BEARING SPACER | 1 | 20605 | KNOB 1" DIA 5/16-18 STUD |
| 1 | 20562 | RAMP ASSEMBLY | 1 | 20643 | CLEVIS ROD END 5/16-24 EASY-ADAPT |
| 2 | 20565 | PIVOT SHAFT CENTER FRAME | 1 | 20644 | SCREW 5/16-24 X 3/4 HHCS GRADE 8 |
| 2 | 20566 | PIVOT SHAFT INSIDE FRAME UPPER | 1 | 20641 | HYDRAULIC POWER UNIT |
| 2 | 20567 | PIVOT SHAFT OUTSIDE FRAME LOWER | 1 | 21501 | TOP ASSY |
| 2 | 20568 | CYLINDER PIVOT PIN | 1 | 21510 | DROPLEAF ASSY |
| 1 | 20572 | SPRING DETENT CONTROL ROD | 1 | 21515 | MOTOR/PUMP COVER |
| 2 | 20576 | FOOT GUARD | 1 | 21535 | MOTOR/PUMP PAN |



WIRING DIAGRAM