

# Electric/Hydraulic 1500



## This isn't your average lift — it has more...and then some.

The Electric/Hydraulic 1500 from Handy is made from 8 gauge domestic steel. With a lifting capacity of 1,500 lbs. and a working height up to 48", this lift is built to handle whatever job you throw at it. It features an auto-locking safety system with 10 stops, letting you work where you want. The convenient 2-way handheld remote controls this lift's smooth operation. Plug it right in to the 120-volt outlet already in your shop, and you're ready to get to work!

Whatever the job, we've got the accessories you need to get it done. Add the 12" side extensions and this lift is perfect for ATV's and UTVs. Add a CV-17 Cycle Vise for work on your bike, take advantage of the self-storing rear drop-out panel to change tires, and utilize the 18" front drop down for easy access to your bike's front wheel and fork.

As with all of our products, the Electric/Hydraulic 1500 is proudly made in the USA.

### Electric/Hydraulic Lift Item 20707G

#### Custom Color Lifts

20707R - Red table top/black frame

20707O - Orange table top/black frame

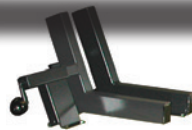
20707B - Black table top/black frame

## THE SPECS

Capacity	1500 lbs.
Work Surface	86-5/8"L x 29-1/2"W
Max Height	48"
Min Height	7-3/4"
Footprint	30-3/4"W x 87-3/4"L
Ramp	17-1/2"W x 36"L
Weight	734 lbs.
Power	120V
Rear Drop-out	14-1/8"W x 23"L
Front Drop-leaf	29-1/2"W x 15-3/8"L
Tool Tray/Toe Guard	14-3/4"W x 66"L



MADE IN USA  
• SINCE 1964 •

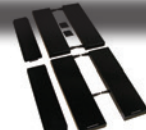


#### CV-17 Cycle Vise 14476

Positions your cycle upright.

Vise opening 7 1/2".

Wt. 37 lbs.



#### 12" Side Extensions 20728

Increase width to work on ATVs and UTVs. Wt. 215 lbs.



#### Universal Scissor Jack 13008

Use on lift or on floor.  
6"W x 19"L.  
Wt. 43 lbs.



#### Lo-Boy Scissor Jack 16999

Use on lift or on floor.  
10"W x 16"L.  
Wt. 43 lbs.

# The Handy Lineup

MADE IN USA  
• SINCE 1964 •



## Standard 1000

Item No.	10740G
Capacity	1000 lbs.
Max Height	30"
Min Height	7"
Work Surface	80" x 24"
Air Source	90-100 psi
Weight	304 lbs.
Ramp Length	20"

*\*\*Electric & CE approved models available*



## S.A.M. 1000

Item No.	16000G
Capacity	1000 lbs.
Max Height	30"
Min Height	7"
Work Surface	84" x 24"
Air Source	90-100 psi
Weight	330 lbs.
Ramp Length	20"

*\*\*Electric & CE approved models available*



## S.A.M. 2 1000

Item No.	16900G
Capacity	1000 lbs.
Max Height	35"
Min Height	7-1/2"
Work Surface	93" x 28"
Air Source	90-120 psi
Weight	427 lbs.
Ramp Length	40"
2 Drop Leafs	15" x 28"



## B.O.B. 1500

Item No.	14472G
Capacity	1500 lbs.
Max Height	40"
Min Height	10"
Work Surface	84" x 28"
Air Source	90-100 psi
Weight	560 lbs.
Ramp Length	31"

*\*\*CE approved model available*

## Sport Lift

Item No.	21000G
Capacity	750 lbs.
Max Height	39"
Min Height	7-1/2"
Work Surface	74" x 23"
Air Source	90-120 psi
Ramp Length	30"
Weight	310 lbs.



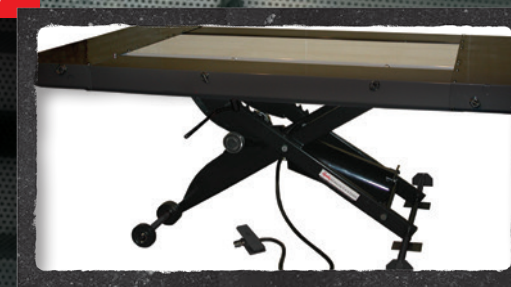
## Electric Hydraulic

Item No.	20707G
Capacity	1500 lbs.
Max Height	48"
Min Height	7-3/4"
Work Surface	86-5/8" x 29-1/2"
Power	120V
Ramp	17-1/2" x 36"
Weight	734 lbs.



## Gruntavore 1800

Item No.	16867G
Capacity	1800 lbs.
Max Height	40"
Min Height	10"
Work Surface	104" x 60"
Air Source	90-100 psi
Ramp Length	31"
Weight	998 lbs.



## B.U.L.

Item No.	22750
Capacity	2500 lbs.
Top Dimensions	27" W x 54" L
Support Arms Extend Width to	51"
Max Height	39"
Min Height	9-1/2"
Air Source	120 lbs.
Weight	500 lbs.



Looking for dependable garage accessories? Rely on Handy for quality and long-lasting products.