



Grille Installation Process

Toyota Tundra '10-'13 MX [Upper 2pc Grille](#) (TOY-1966)

Part # TOY-1966S

Part # TOY-1966B



Picture #1:

Our project 2010 Toyota Tundra in need of a custom GrillCraft Grille. Will also fit Platinum & Limited Edition models.



Picture #2:

Remove latch lever from grille as shown.



Picture #3:

Remove the nuts located on the back side of the grille.



Picture #4:

Use plastic pry bar in order to unclip the grille shell from the hood.



Picture #5:

Remove grille shell from vehicle.



Picture #6:

Remove hood latch bracket screws.



Picture #7:

Remove hood latch bracket.



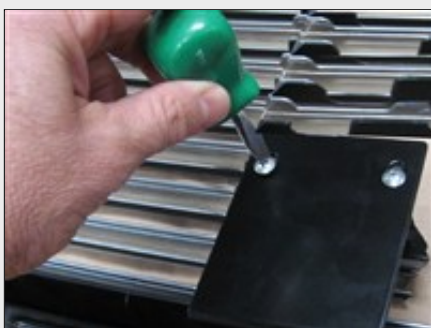
Picture #8:

Remove the two plastic nubs using wire cutters.



Picture #9:

Here is the GrillCraft hood latch extension bracket included with grille kit.



Picture #10:

Attach latch extension bracket to the grille shell with screws in order to temporarily hold in place.



Picture #11:

Platinum & Limited Edition models
Notes: On the Platinum Edition Tundra marking the latch bracket is quite easy there is no need for steps #12 & #14 on the Platinum Edition grille shell.



Picture #12:

With the latch bracket in place mark latch bracket location using masking tape as shown.



Picture #13:
Remove the grille shell metal support along the bottom of the grille shell.



Picture #14:
Align latch bracket with tape lines as a guide and scribe latch bracket holes onto grille support.



Picture #15:
Drill holes for the latch bracket using 13/64 drill bit.



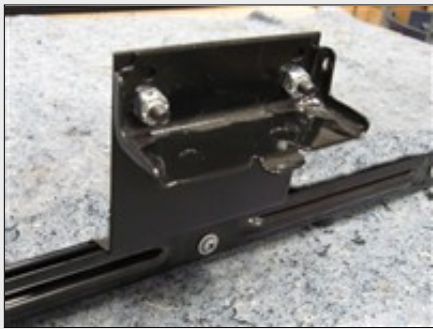
Picture #16:
A view of the holes drilled into grille shell support.



Picture #17:
Latch bracket mounting hardware.



Picture #18:
The new latch bracket mounted to the grille shell support.



Picture #19:
Mount the original latch bracket to the new GrillCraft latch extension bracket as shown.



Picture #20:
Cut the factory grille center bars off.



Picture #21:
Removing factory grille center bars from the grille shell.



Picture #22:
Use a grinder to clean up the cut area as shown.



Picture #23:
The factory grille shell with center section removed.



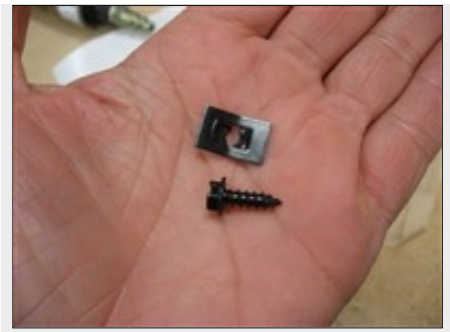
Picture #24:
Place GrillCraft grille into grille shell opening.



Picture #25:
Mark grille mounting tab center hole locations using a sharp scribe.



Picture #26:
Drill 3/16 inch holes for Grille mounting screws.



Picture #27:
The grille mounting screws and "flat" nuts.



Picture #28:
Fasten grille with supplied screws and "flat" nuts.



Picture #29:
The lower screw tip will come into contact with the metal support brace removed earlier. We will need to make a clearance for the screw tip into the metal support.



Picture #30:
The metal support brace showing the area that needs a clearance hole.



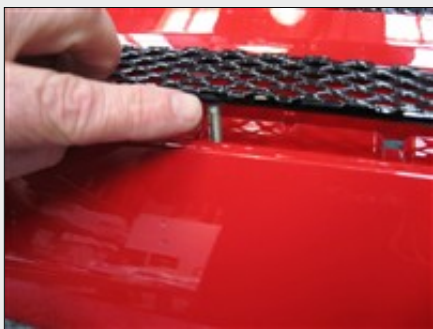
Picture #31:
Using a file or drill make a notch into the support bar as shown.



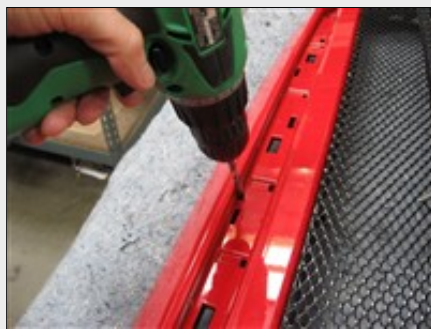
Picture #32:
Reinstall the metal support brace as shown.



Picture #33:
Remove factory upper grille shell trim.



Picture #34:
Place GrillCraft upper insert into grille shell top opening. Mark the mounting stud locations onto the grille shell.



Picture #35:
Drill hole for the upper grille mounting stud into the grille shell.



Picture #36:
Enlarge the right & left existing hole using a round file.



Picture #37:
Tape off and paint the top grille background area using "Flat-Black" spray paint.



Picture #38:
The top grille area with background painted flat black.



Picture #39:
Insert the GrillCraft top grille into the grille shell.



Picture #40:
From the back side of the grille shell fasten top grille insert nuts.



Picture #41:
Toyota Tundra grille shell shown with 2pc GrillCraft Mx Series mesh grille installed.



Picture #42:
Toyota Tundra grille shell shown with 2pc GrillCraft Mx Series mesh grille installed.



Picture #43:
Toyota Tundra grille shell shown with 2pc GrillCraft Mx Series mesh grille installed. Will also fit Platinum & Limited Edition models.



Picture #44:
Project Toxic Tundra showing off a GrillCraft Mx Series black mesh grille. Will also fit Platinum & Limited Edition models.



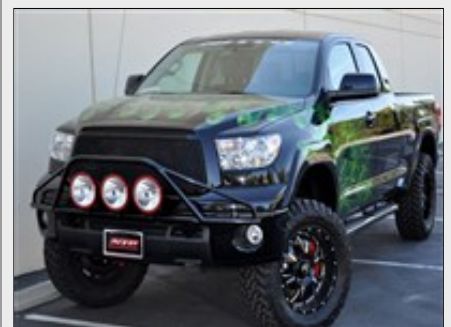
Picture #45:
Project Toxic Tundra showing off a GrillCraft Mx Series black mesh grille. Will also fit Platinum & Limited Edition models.



Picture #46:
Project Toxic Tundra showing off a GrillCraft Mx Series black mesh grille. Will also fit Platinum & Limited Edition models.



Picture #47:
Project Toxic Tundra showing off a GrillCraft Mx Series black mesh grille. Will also fit Platinum & Limited Edition models.



Picture #48:
Project Toxic Tundra showing off a GrillCraft Mx Series black mesh grille. Will also fit Platinum & Limited Edition models.