

INSTALLATION INSTRUCTIONS

53233-5 PULL PRO 2004-2008 Ford Pick Up F-Series New Body Style

Parts List:	(1) Hardware kit including:	
QTY	7 (6) 1/2 x 1 1/4" Hex head bolt B.P.	17 (2) 1/4" Lock Nut
1 (1) Pull Pro	8 (2) M12 x 90mm Hex head bolt	18 (2) M12 Nuts
2 (1) Tubular Bracket	9 (10) 1/2" Flat Washer B.P.	19 (2) 1/2 x 2" Hex head bolt Z.P.
3 (2) Main Bracket	10 (6) 1/2" Lock nut B.P.	20 (8) 1/2" Flat washer Z.P.
4a (2) Auxiliary Bracket	11 (2) 3/8" Flat Washer	21 (2) 1/2" Lock washer Z.P.
5a (2) 1/2" Special Flat Washer	12 (2) 3/8" Lock Nut	22 (6) 1/2" Lock nut Z.P.
5b (4) Spacer	13 (1) Wire guide for 1/2" bolt.	
6 (4) 1/2" Tab bolt	14 (2) 3/8 x 1 1/2" Hex head bolt	
	15 (2) 1/4 x 1" Hex head bolt	
	16 (2) 1/4" Flat Washer	

Tools required:

Socket 3/4" (19mm) Socket 7/16 (11mm) Ratchet Socket 18mm
 Socket 9/16" (14mm) Wrench 3/4" (19mm) Extension ratchet

Instructions:

Aproximated installation time: 60 min.

1. Read and understand instructions completely before beginning installation. Identify the bolts from the pictures with the numbers from the bolts list. If the vehicle doesn't have tow hook proceed to step 4, photos and images are from driver side.
2. If equipped with tow hooks, remove front tow hook bolt and loose rear bolt so the tow hook slides off bolts, as shown in Picture 1. Repeat for the opposite side. Note: By keeping rear bolt threaded, it make easy the installation of main mounting brackets.
3. Place main mounting bracket between tow hook and vehicle frame and secure using existing bolts. Picture 2. Leave loose. If equipped with tow hooks proceed to step 6.
4. If NOT equipped with tow hooks, it will be necessary to cut off a 3/8 x 2 1/2" slot per side in the vehicle lower bumper balance to pass through the main mounting brackets. The slots must be 28 1/2" between interior edges. For more references. See picture 3 and image 1.
5. Locate the existing holes in the frame rail as shown in Picture 4, then introduce the tab bolts. Picture 5. Note: Use the wire guide to introduce the bolts in the correct position. Place main mounting brackets and secure to the tab bolts using a 1/2" flat washers and lock nuts. Leave loose. Image 3.
- 6.- To install the auxiliary bracket, open the hood and locate the (TC) plate in the frame front end, then introduce the tubular bracket from the bumper and secure it to the (TC) plate of the chassis with 1/2 x 2" hex bolts, flat washers and lock nuts. Attach auxiliary bracket to the tubular bracket with M12 x 90 bolts, flat washers, lock washers and M12 nuts as shown on same image.
7. Place the Pull Pro up to the main mounting brackets and bolt them together using 1/2 x 1 1/4" hex head bolts, flat washers and lock nuts. Attach auxiliary mounting bracket to the side plate using 1/2 x 1 1/4" hex head bolts, flat washers and lock nuts. **Note: Identify which hole must use depending of the year model.**
 If it is necessary install the license plate use the license plate bracket at bottom of the winch plate, using (2) 3/8" bolts, flat washers and lock nuts. Tighten the license plate to the bracket using (2) 1/4 x 1" bolts, flat washers and lock nuts. Leave loose.
8. Make any final adjustments to the alignment of the Pull Pro and tighten all bolts. Note: Before tightening the fasteners, make sure the Pull Pro does not interfere with opening and closing of the hood.
9. You may need to periodically re-tighten the bolts.

Cleaning and care instructions:

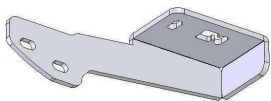
Diseño:

Calidad:

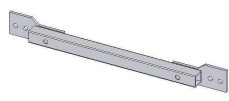
Protect the finish with a non-abrasive automotive wax, (e.g. Pure Carnauba) on a regular basis. The use of any soap, polish, or wax that contains an abrasive is detrimental to the finish, as the compounds scratch the finish and cause corrosion.

INSTALLATION INSTRUCTIONS

53233-5 PULL PRO 2004-2008 Ford Pick Up F-Series New Body Style



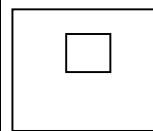
Main Bracket



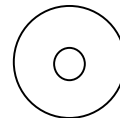
Tubular Bracket



Auxiliary Bracket

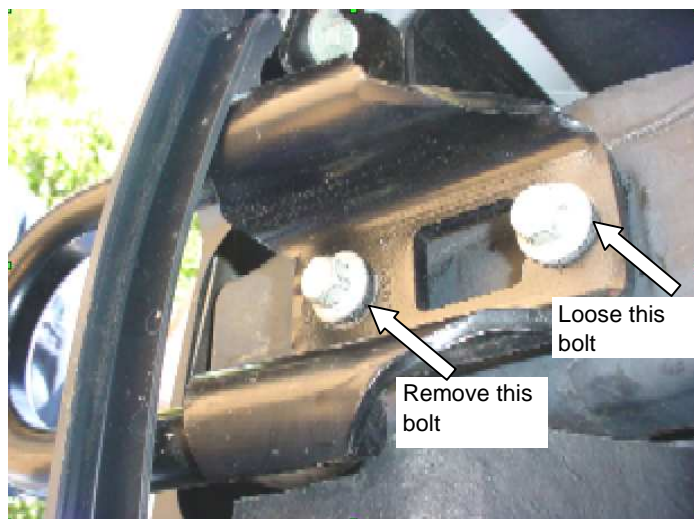


Spacer

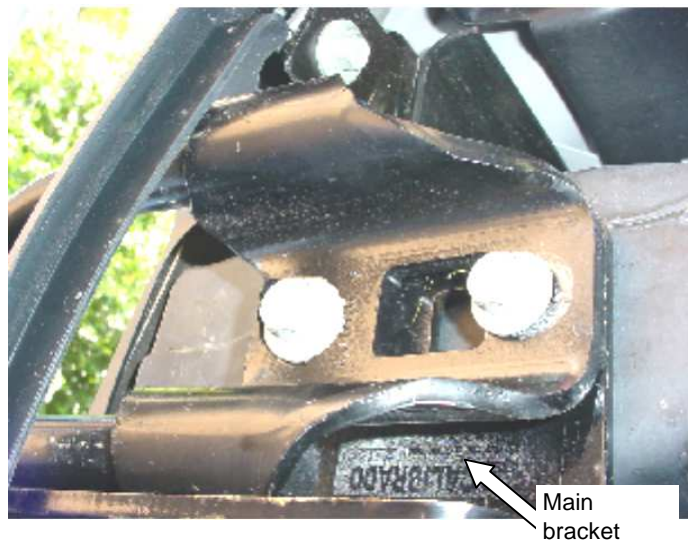


Special Flat Washer

Picture 1



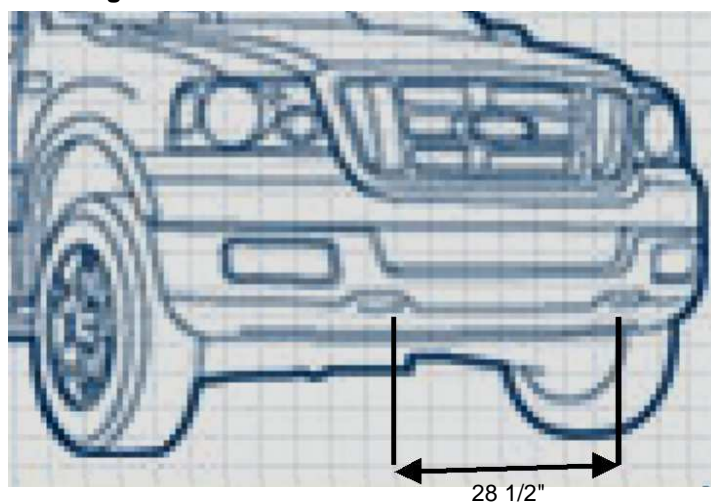
Picture 2



Picture 3



Image 1

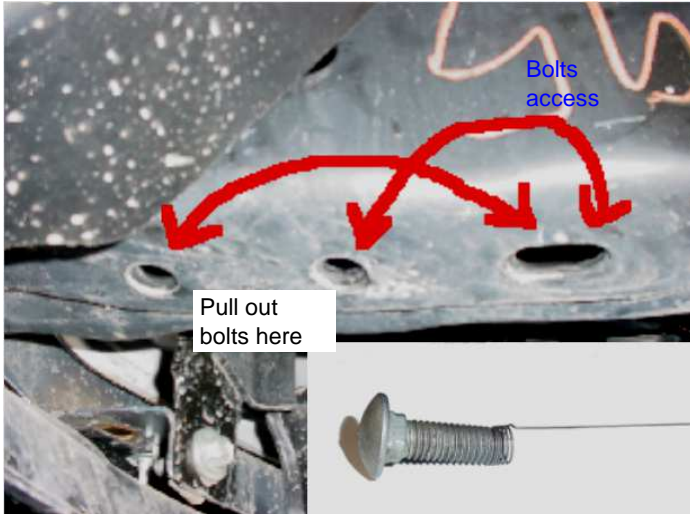


Protect the finish with a non-abrasive automotive wax, (e.g. Pure Carnuba) on a regular basis. The use of any soap, polish, or wax that contains an abrasive is detrimental to the finish, as the compounds scratch the finish and cause corrosion.

INSTALLATION INSTRUCTIONS

53233-5 PULL PRO 2004-2008 Ford Pick Up F-Series New Body Style

Picture 4



Picture 5

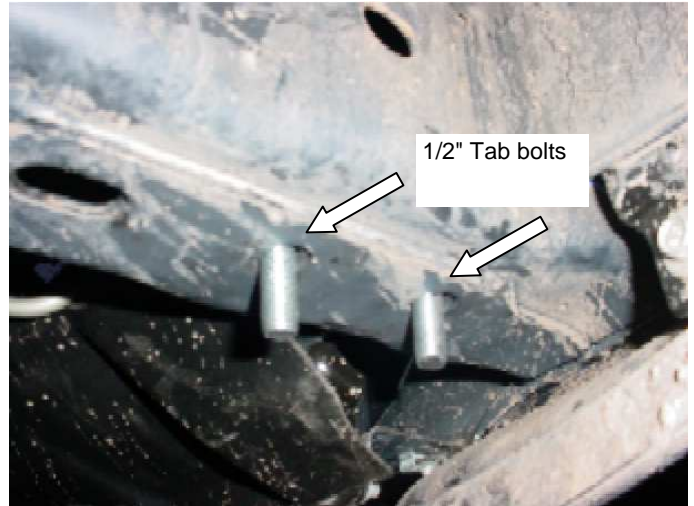


Image 2

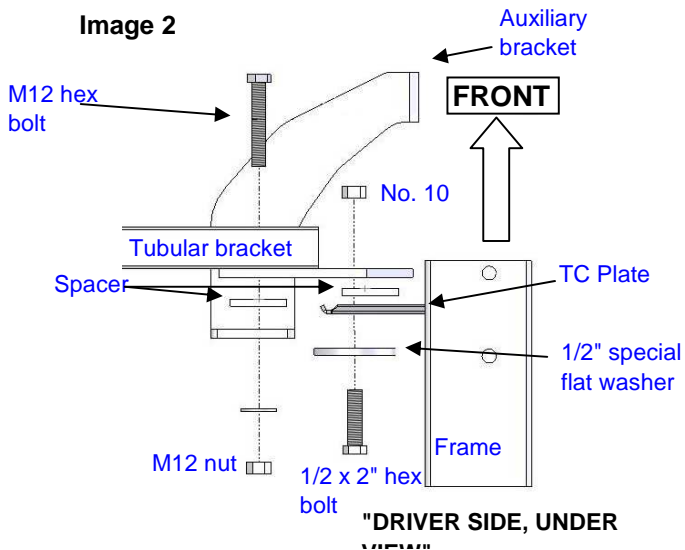


Image 3

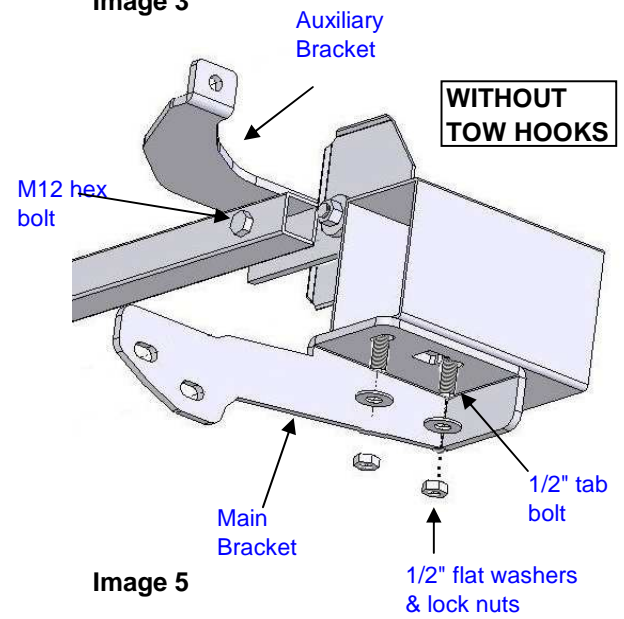


Image 4

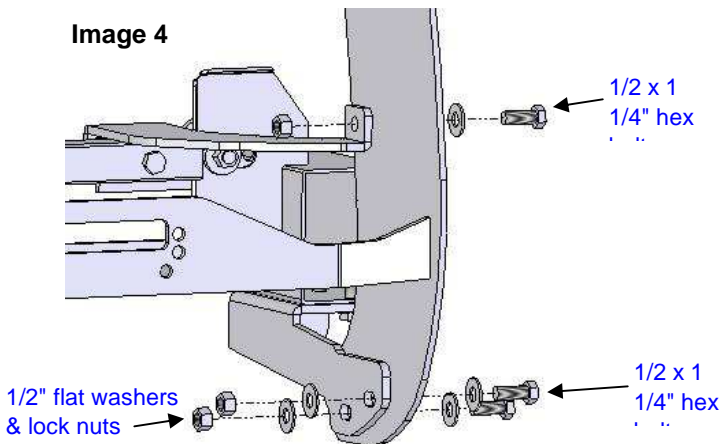
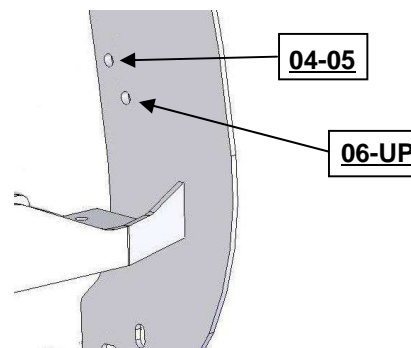


Image 5



Protect the finish with a non-abrasive automotive wax, (e.g. Pure Carnauba) on a regular basis. The use of any soap, polish, or wax that contains an abrasive is detrimental to the finish, as the compounds scratch the finish and cause corrosion.