



## Trailer Winch



### **Read, Understand, Follow and Save These Instructions**

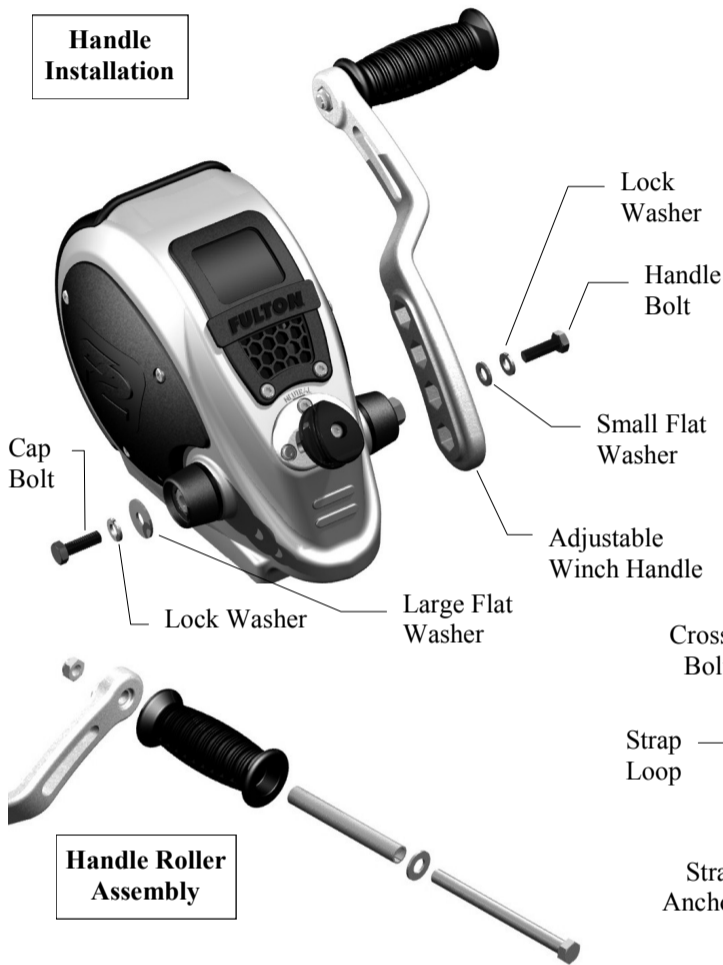
Read, understand and follow all of these instructions and warnings (Instructions) before installing and using this product. Install and use this product only as specified in these instructions. Improper installation or use of this product may result in property damage, serious injury, and/or death. Never allow installation or use of this product by anyone without providing them with these instructions. You must read, understand and follow all instructions and warnings for any product(s) to which this product is used in conjunction with or installed. Save these instructions with the product for use as a reference for any future installation and use of the product.

### **Installation Instructions**

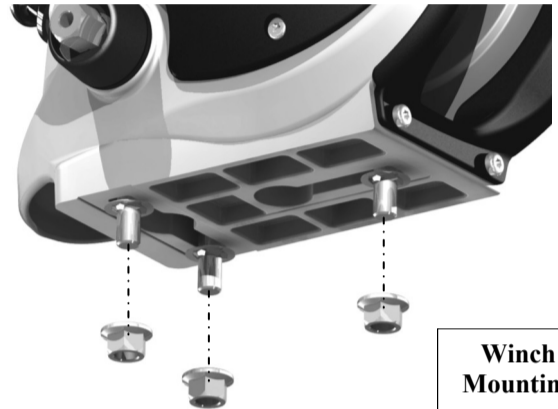
**Warning: Failure to follow all installation instructions could result in winch failure.**

The mounting surface must be equal to or greater than the footprint of the winch frame. When attaching the trailer winch, use the three (3) supplied 3/8" dia. grade-5 carriage bolts/lock nuts and torque to 28-30 ft-lbs. Check final installation and make sure winch is secure to mounting structure.

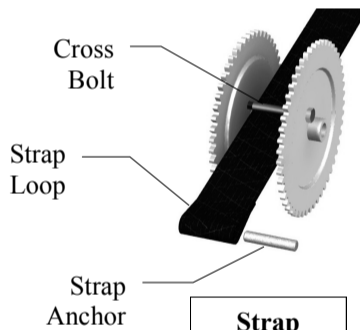
#### Handle Installation



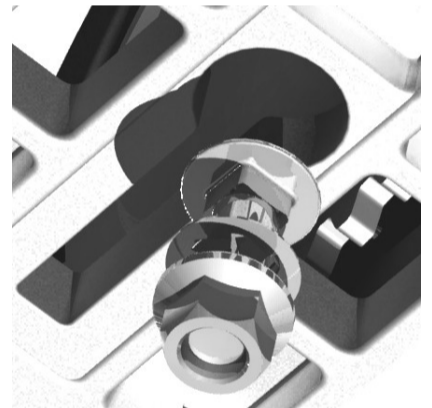
#### Handle Roller Assembly



#### Winch Mounting



#### Strap Installation



#### **Installing Handle Roller Assembly:**

Assemble handle assembly as shown and torque locknut to 20-25 ft-lbs., using a 9/16" socket.

#### **Adjustable Handle (6" to 9" and Right or Left Hand Drive):**

This handle can be mounted not only in different length configurations, but also in a right or left hand orientation. In order to switch to a right or left hand drive first remove the bolt and washers from each side of the drive shaft. Push the hex shaft 1/2"-3/4" through to the other side. Do not try to remove the shaft completely in order to keep the internal gears and bushings inline. Place the handle bolt and washers on the handle side and torque to 22-25 ft-lbs. Then repeat for the opposite side of the shaft. Do not over torque.

#### **Attaching Winch Strap:**

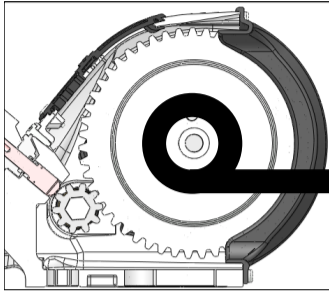
Use strap anchor provided with winch as pictured above. Pass the strap loop under the cross bolt, insert strap anchor in the strap loop, then pull tight. Always maintain a minimum of three complete wraps of strap on the drum.

## Prior to Use

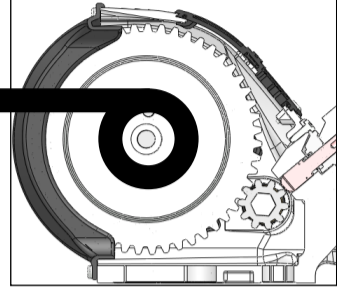
- Inspect strap and replace if damaged.
- Check mounting hardware for proper tightness and re-torque if necessary.
- Gears, ratchet contact points and shaft bushings must be kept lubricated with a thin oil or grease.

## Operation

### Strap Under Drum



### Strap Over Drum



#### Let Line/Load Out:

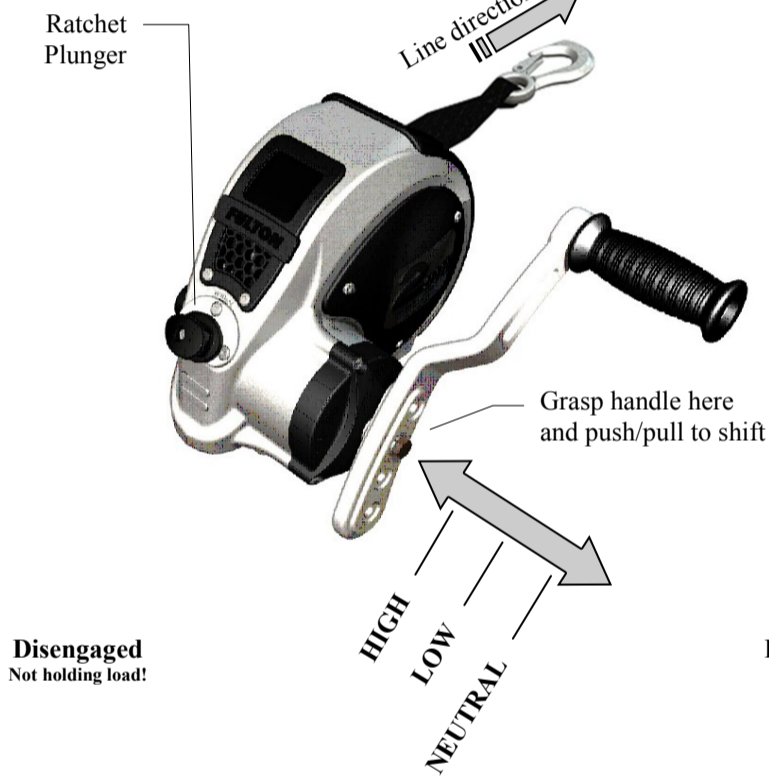
Before turning the handle, firmly grip the winch handle and disengage the ratchet plunger or engage it in the reverse direction. You may have to take in a small amount of strap to allow the ratchet plunger to unload. With a firm grip on the winch handle, slowly let out strap. If you must stop before the load is fully out, be sure the ratchet plunger is engaged in the forward or loading position and gradually release the winch handle to be sure the ratchet plunger is holding the load.

#### Take Line/Load In:

Be sure the ratchet plunger is engaged in the forward or loading position. As you turn the handle, make sure the strap is winding onto the drum properly. If you must stop before the load is fully in, be sure the ratchet plunger is engaged and gradually release the winch handle to be sure the ratchet plunger is holding the load.

#### Shifting (2-Speed Winches Only):

Make sure the ratchet plunger is properly engaged and holding the load before attempting to change gears. Firmly grasp the crank arm of the F2 2-speed winch where it attaches to the input shaft. Push/pull to shift. In for High-Gear, center for Low-Gear and out for Neutral.



## Maintenance

The F2 winch is designed with precision fit components and corrosion resistant materials to minimize the frequency of maintenance. Occasional cleaning with mild soap and water along with light oil lubrication of contact points will prolong peak performance and appearance.