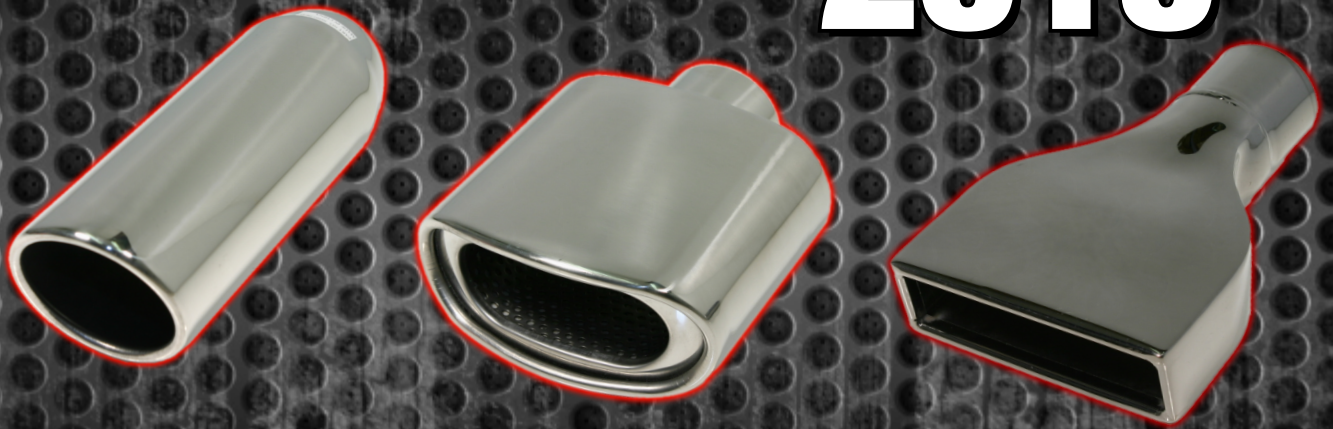


2015



TIPS CATALOG

FLO ~ PRO

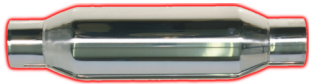
PERFORMANCE EXHAUST

CONTENTS



Stainless Steel Mufflers

4



Resonators

5



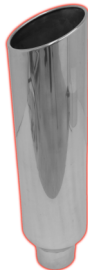
Camaro tips

6



Diesel Tips

7



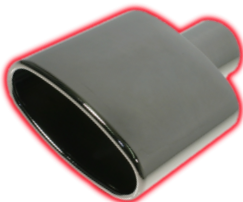
Diesel Stacks

11



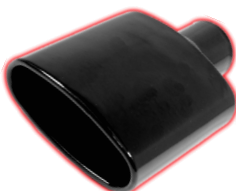
304 Polished Stainless Endings

12



Black Chrome

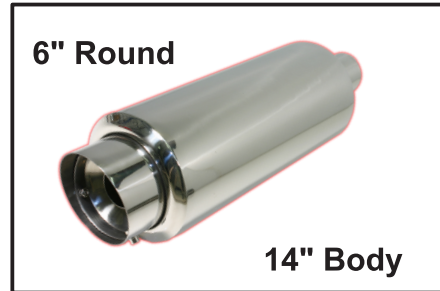
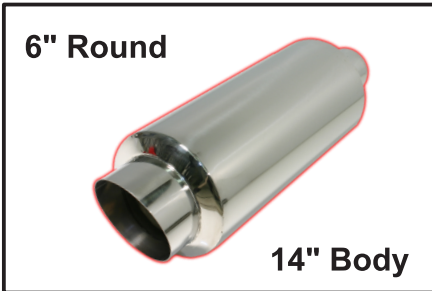
20



Black Powder Coated

21

STAINLESS MUFFLERS



Part #	Inlet	Outlet	Part #	Inlet	Outlet	Part #	Inlet	Outlet
SM106S	2-1/4"	4"	SM125	2-1/4"	4"	SM142S	2-1/4"	4"
SM106S5	2-1/2"	4"	SM1255	2-1/2"	4"	SM142S5	2-1/2"	4"
SM106S6	3"	4"	SM1256	3"	4"			



IN 2-1/4" OUT 4" DW Slant



IN 2-1/4" OUT 4-1/2" Slant



IN 2-1/4" OUT 3-3/8" Slant Silencer



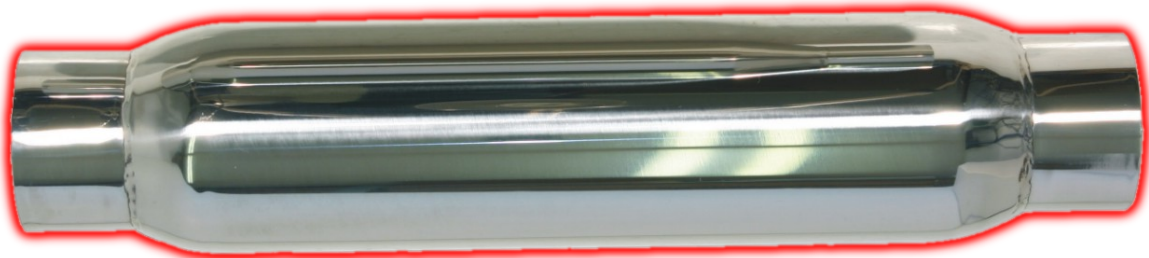
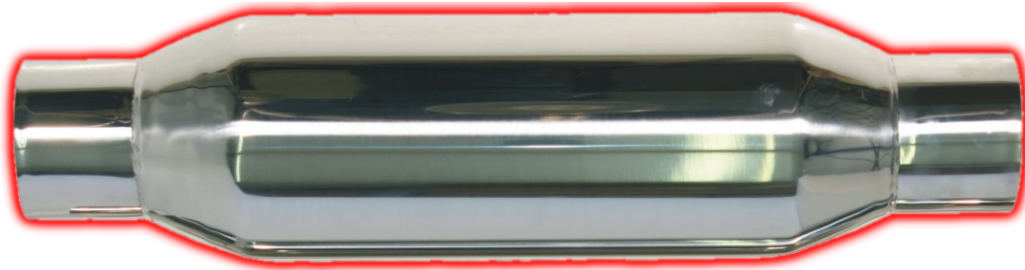
IN 2-1/4" OUT 3" Dual DW Slant



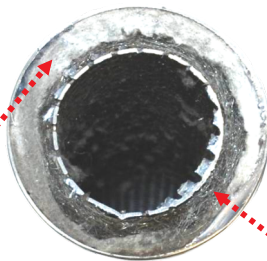
IN 2-1/4" OUT 5-1/2" X 3-1/2"



STAINLESS GLASSPACKS

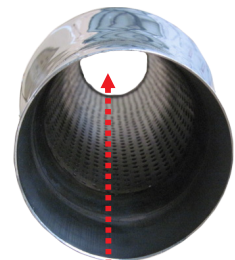


CASE DIAMETER	CASE LENGTH	CORE DIAMETER	OVERALL LENGTH	END SIZES	END POSITION	PART NUMBER
3-1/2"	12"	2-1/4"	16"	2-1/4"	STRAIGHT	3512RS
3-1/2"	15"	2-1/4"	19"	2-1/4"	STRAIGHT	3515RS
4"	12"	2-1/2"	16"	2-1/2"	STRAIGHT	4512RS
4"	15"	2-1/2"	19"	2-1/2"	STRAIGHT	4515RS
4"	12"	3"	16"	3"	STRAIGHT	4312RS
4"	15"	3"	19"	3"	STRAIGHT	4315RS



Densely packed with high temp sound absorbing material resists meltdown,

Heavy gauge stainless steel



Thick stainless steel mesh adds additional sound absorption and

Straight through design

CAMARO STYLE



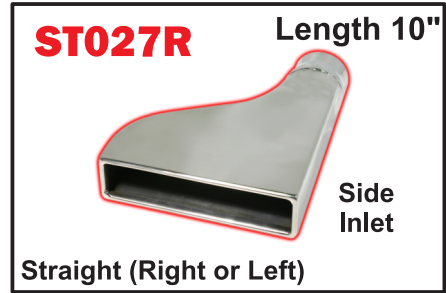
IN 2-1/2"

OUT 6" X 2-1/4"



IN 2-1/2"

OUT 8" X 2-1/4"



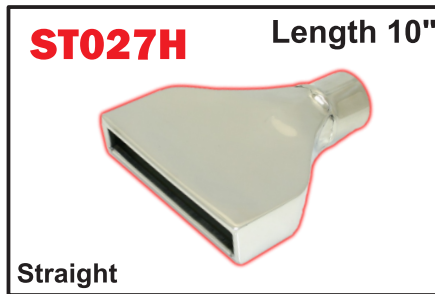
IN 2-1/2"

OUT 8" X 2-1/4"



IN 2-1/2"

OUT 6" X 2-1/4"



IN 2-1/2"

OUT 8" X 2-1/4"

Black Chrome

more on page 20



IN 2-1/2"

OUT 6" X 2-1/4"



IN 2-1/2"

OUT 8" X 2-1/4"

Black Powder Coated

more on page 21



IN 2-1/2"

OUT 6" X 2-1/4"



IN 2-1/2"

OUT 8" X 2-1/4"

DIESEL TIPS



Part #	Inlet	Outlet	Length
4515F	4"	5"	15"
5615F	5"	6"	15"



Part #	Inlet	Outlet	Length
4515FB	4"	5"	15"
5615FB	5"	6"	15"



Part #	Inlet	Outlet	Length
ST110	4"	5"	22"



Part #	Inlet	Outlet	Length
7715TD	3-1/2"	3-1/2"	15"
405015TD	4"	5"	20"
505015TD	5"	5"	22"

VENTED 6.4L FORD



VENTED DURAMAX



DIESEL TIPS

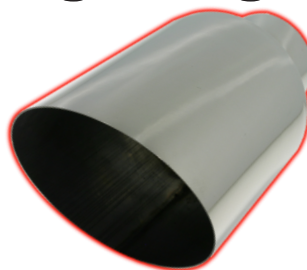
Rolled Angle Cut



Clamp or Weld On

Part #	Inlet	Outlet	Length
354012RAC	3-1/2"	4"	12"
354015RAC	3-1/2"	4"	15"
355012RAC	3-1/2"	5"	12"
355015RAC	3-1/2"	5"	15"
405012RAC	4"	5"	12"
405015RAC	4"	5"	15"
405018RAC	4"	5"	18"
406012RAC	4"	6"	12"
406015RAC	4"	6"	15"
406018RAC	4"	6"	18"
407015RAC	4"	7"	15"
407018RAC	4"	7"	18"
506012RAC	5"	6"	12"
506014RAC	5"	6"	14"
506015RAC	5"	6"	15"
506018RAC	5"	6"	18"
507015RAC	5"	7"	15"

45 Degree Angle Cut



Clamp or Weld-On

Part #	Inlet	Outlet	Length
407015AC	4"	7"	15"
5615AC	5"	6"	15"
507015AC	5"	7"	15"
508015AC	5"	8"	15"

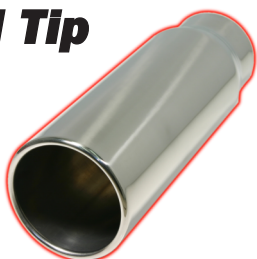
Pencil Tip



Bolt-On

Part #	Inlet	Outlet	Length
8912PT	4"	5"	12"

Pencil Tip



Part #	Inlet	Outlet"	Length
405012PT	4"	5"	12"
405015PT	4"	5"	15"

15 Degree Angle Cut



Clamp or Weld-On

Part #	Inlet	Outlet	Length
8912AC	4"	5"	12"
8915AC	4"	5"	15"
8012AC	4"	6"	12"
8015AC	4"	6"	15"
9012AC	5"	6"	12"
9015AC	5"	6"	15"

DIESEL TIPS

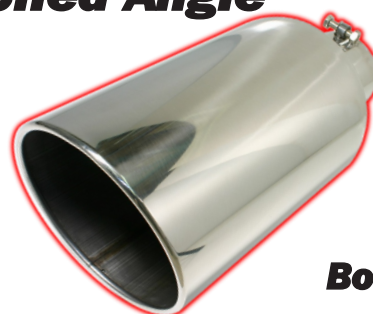
Angle Cut



Bolt-On

Part #	Inlet	Outlet	Length
8912ACB	4"	5"	12"
8915ACB	4"	5"	15"
8012ACB	4"	6"	12"
8015ACB	4"	6"	15"
8018ACB	4"	6"	18"
407015ACB	4"	7"	15"
407018ACB	4"	7"	18"
408015ACB	4"	8"	15"
408018ACB	4"	8"	18"
9015ACB	5"	6"	15"
9012ACB	5"	6"	12"
507015ACB	5"	7"	15"
508015ACB	5"	8"	15"

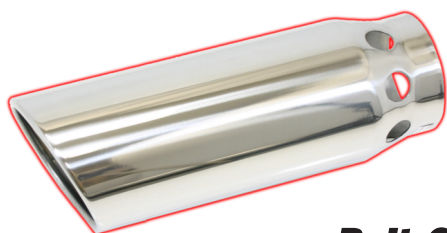
Rolled Angle



Bolt-On

Part #	Inlet	Outlet	Length
6815RAB	3"	4"	15"
7815RAB	3-1/2"	4"	15"
355012RACB	3-1/2"	5"	12"
8912RAB	4"	5"	12"
8915RAB	4"	5"	15"
8918RAB	4"	5"	18"
8012RAB	4"	6"	12"
8015RAB	4"	6"	15"
8018RAB	4"	6"	18"
407015RACB	4"	7"	15"
407018RACB	4"	7"	18"
408015RACB	4"	8"	15"
408018RACB	4"	8"	18"
9012RAB	5"	6"	12"
9015RAB	5"	6"	15"
506018RACB	5"	6"	18"
507015RACB	5"	7"	15"
508015RACB	5"	8"	15"
6015RAB	6"	6"	15"

Rolled Angle Vented



Bolt-On

Part #	Inlet	Outlet	Length
405014RAC	4"	5"	14"
506014RAC	5"	6"	14"

DIESEL TIPS



Part # Inlet Outlet Length

ST538NS	4"	5"	12"
ST540NS	4"	6"	12"
ST541NS	4"	7"	12"
ST590NS	5"	6"	12"
ST591NS	5"	7"	12"

IN 4"

OUT 5"

IN 4"

OUT 5"



IN 4"

OUT 5"

BLACK CHROME

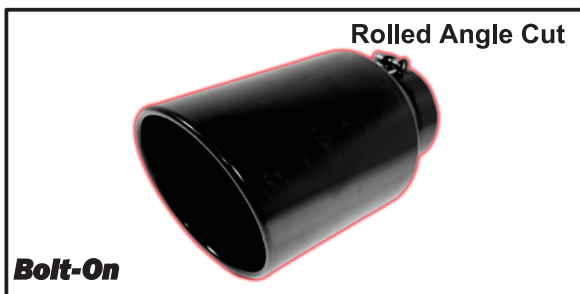


Part # Inlet Outlet Length

405012RAC2	4"	5"	12"
405015RAC2	4"	5"	15"
506015RAC2	5"	6"	15"
8915RAB2*	4"	5"	15"

* /w Bolt

BLACK CERAMIC COATED



Part # Inlet Outlet Outlet

355015RACBK	3-1/2"	5"	15"
405012RACBK	4"	5"	12"
405015RACBK	4"	5"	15"
406012RACBK	4"	6"	12"
406015RACBK	4"	6"	15"
407015RACBK	4"	7"	15"
408015RACBK	4"	8"	15"
506015RACBK	5"	6"	15"
507015RACBK	5"	7"	15"
508015RACBK	5"	8"	15"



Part # Inlet Outlet Length

405015TDBK	4"	5"	20"
-------------------	----	----	-----



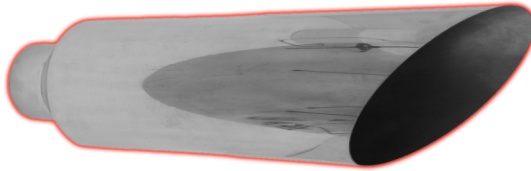
Part # Inlet Outlet Length

405012ACBK	4"	5"	12"
-------------------	----	----	-----

DIESEL STACKS

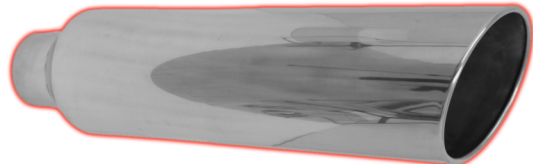
304 POLISHED STAINLESS

45 DEG ANGLE CUT



Part #	Inlet	Outlet	Length
AC5632	5"	6"	32"
AC5644	5"	6"	44"
AC5732	5"	7"	32"
AC5744	5"	7"	44"
AC5832	5"	8"	32"
AC5844	5"	8"	44"

20 DEG ROLLED ANGLE CUT



Part #	Inlet	Outlet	Length
RA5632	5"	6"	32"
RA5644	5"	6"	44"
RA5732	5"	7"	32"
RA5744	5"	7"	44"
RA5832	5"	8"	32"
RA5844	5"	8"	44"

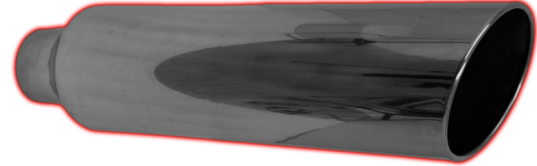
BLACK CHROME

45 DEG ANGLE CUT



Part #	Inlet	Outlet	Length
AC56322	5"	6"	32"
AC56442	5"	6"	44"
AC58322	5"	8"	32"
AC58442	5"	8"	44"

20 DEG ROLLED ANGLE CUT



Part #	Inlet	Outlet	Length
RA56322	5"	6"	32"
RA56442	5"	6"	44"
RA57322	5"	7"	32"
RA57442	5"	7"	44"
RA58322	5"	8"	32"
RA58442	5"	8"	44"

BLACK CERAMIC COATED

45 DEG ANGLE CUT



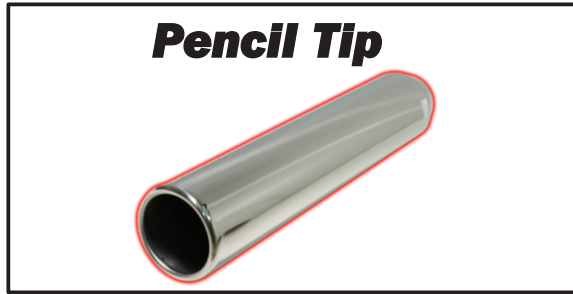
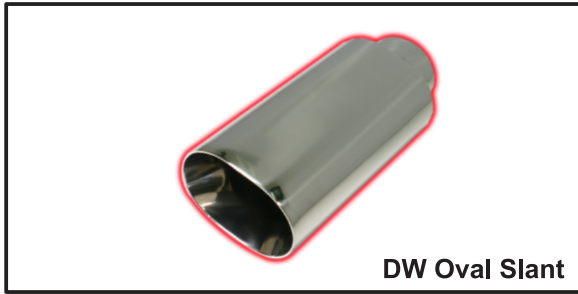
Part #	Inlet	Outlet	Length
AC5632K	5"	6"	32"
AC5644K	5"	6"	44"
AC5732K	5"	7"	32"
AC5744K	5"	7"	44"
AC5832K	5"	8"	32"
AC5844K	5"	8"	44"

20 DEG ROLLED ANGLE CUT



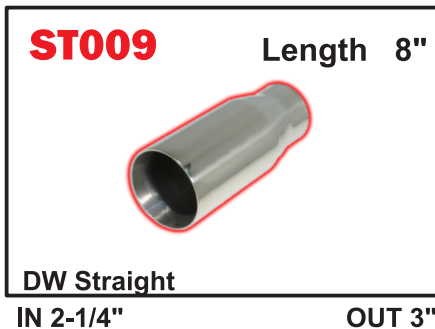
Part #	Inlet	Outlet	Length
RA5632K	5"	6"	32"
RA5644K	5"	6"	44"
RA5732K	5"	7"	32"
RA5744K	5"	7"	44"
RA5832K	5"	8"	32"
RA5844K	5"	8"	44"

304 POLISHED

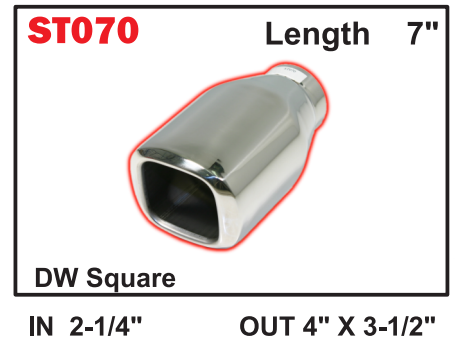
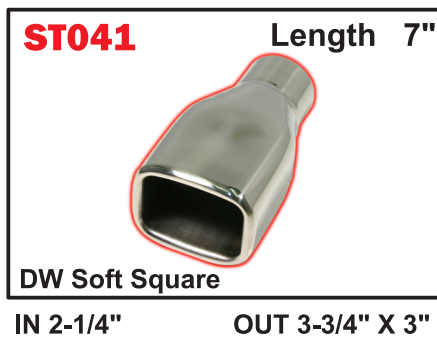
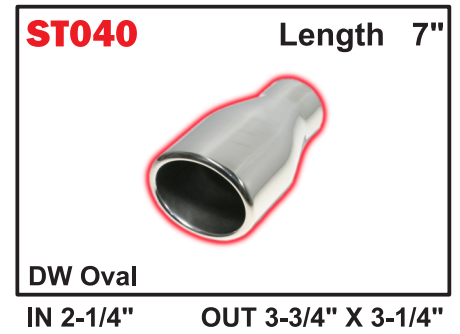


Part #	Inlet	Outlet	Length
ST251612	2-1/2"	4-1/2" X 3"	12"
ST251615	2-1/2"	4-1/2" X 3"	15"
ST301612	3"	4-1/2" X 3"	12"
ST301615	3"	4-1/2" X 3"	15"

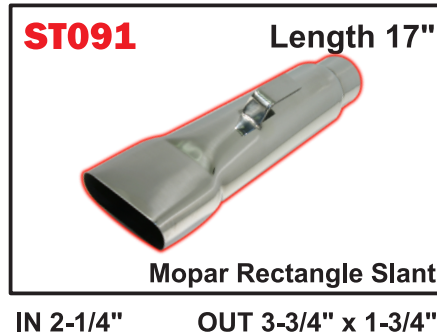
Part #	Inlet	Outlet	Length
ST007A	1-3/4"	2"	10"
ST007B	2"	2-1/4"	10"
ST007	2-1/4"	2-1/2"	10"
243512PT	2-1/4"	3-1/2"	12"
243518PT	2-1/4"	3-1/2"	18"
243522PT	2-1/4"	3-1/2"	22"
253518PT	2-1/2"	3-1/2"	18"



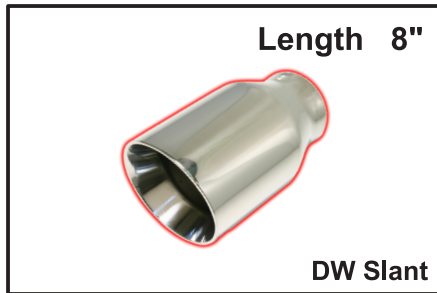
STAINLESS ENDINGS



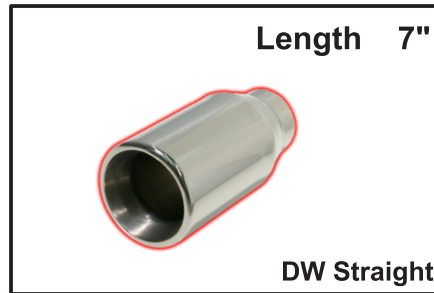
304 POLISHED



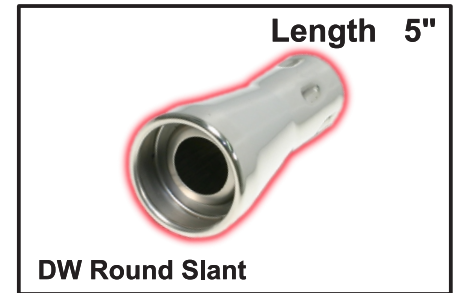
STAINLESS ENDINGS



Part #	Inlet	Outlet
ST136A	2-1/4"	3"
ST136B	2-1/4"	3-1/2"
ST136C	2-1/4"	4"



Part #	Inlet	Outlet
ST135A	2-1/4"	3"
ST135B	2-1/4"	3-1/2"
ST135C	2-1/2"	3-1/2"



Part #	Inlet	Outlet
ST092	1-1/2"	2-1/2"
ST093	1-3/4"	2-1/2"



IN 2-1/4" OUT 3"



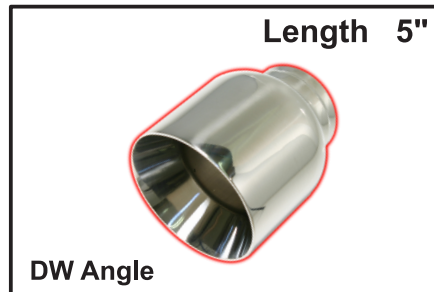
IN 2-1/4" OUT 4"



IN 2-1/4" OUT 3-1/2"



IN 2-1/4" OUT 3-1/2"



Part #	Inlet	Outlet
ST139	2-1/2"	4"
ST140	3"	4"



IN 2-1/4" OUT 2" X 4"



IN 2-1/4" OUT 3-3/4" X 3-1/4"



IN 2-1/4" OUT

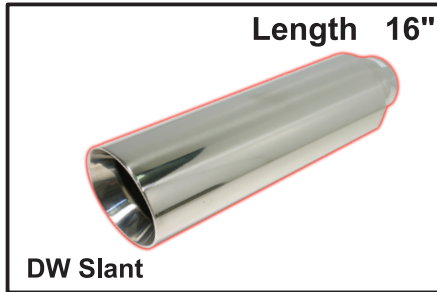


IN 2-1/4" OUT 3-3/4" X 3-1/4"

304 POLISHED



IN 2-1/4" OUT 3-1/2"



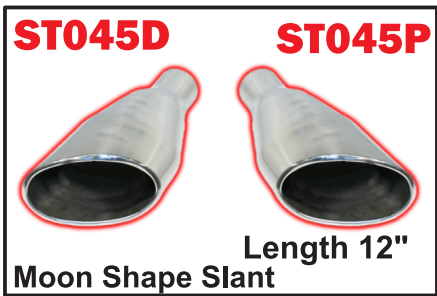
Part #	Inlet	Outlet
ST25013B16	2-1/2"	3-1/2"
ST25013C16	2-1/2"	4"



IN 3-1/2" OUT 4"



IN 2-1/4" OUT 6" X 3-3/4"



IN 2-1/4" OUT 6" X 3-3/4"



IN 2-1/2" OUT 3-1/4"



IN 2-1/4" OUT 5-1/2" x 3-1/4"



IN 2-1/4" OUT 6" X 4"



IN 2-1/4" OUT 2-3/4" x 3-1/4"

STAINLESS ENDINGS

ST048 Length 10"



Dual DW Round Turn Up
IN 2-1/4" OUT 3"

ST079 Length 9"



Dual Oval Slant
IN 2-1/4" OUT 3-1/2" X 3"

ST080 Length 13"



DW Dual Slant
IN 3" OUT 3"

ST084 Length 9"



Dual Oval Slant
IN 2-1/4" OUT 3" x 2-1/4"

ST025S Length 12"



Dual Round Turn Up Slant
IN 2-1/4" OUT 3"

ST026S Length 12"



Dual Rolled Round Slant
IN 2-1/4" OUT 3-1/2"

ST121 Length 14"



DW Dual Oval
IN 2-1/4" OUT 5-1/2" x 3-1/2"

ST123 Length 13"



DW Dual Round Slant
IN 2-1/2" OUT 3-1/2"

ST130 Length 16"



DW Dual Round
IN 3" OUT 4"

ST123C Length 13"



DW Dual Round Slant
IN 2-1/2" OUT 3-1/2"

Chrome
over
Stainless

ST123C1 Length 13"

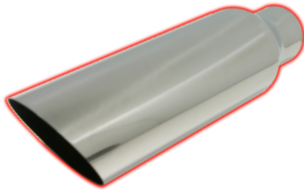


DW Dual Round Slant
IN 3" OUT 3-1/2"

Chrome
over
Stainless

304 POLISHED

45 Degree Angle Cut



Clamp or Weld On

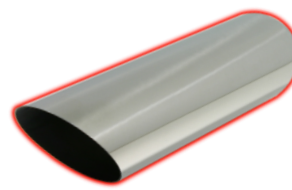
Part #	Inlet	Outlet	Length
4612AC	2-1/4"	3"	12"
4616AC	2-1/4"	3"	16"
4712AC	2-1/4"	3-1/2"	12"
4718AC	2-1/4"	3-1/2"	18"
4722AC	2-1/4"	3-1/2"	22"
5618AC	2-1/2"	3"	18"
5712AC	2-1/2"	3-1/2"	12"
5718AC	2-1/2"	3-1/2"	18"
5722AC	2-1/2"	3-1/2"	22"
5818AC	2-1/2"	4"	18"
5822AC	2-1/2"	4"	22"

15 Degree Angle Cut



Part #	Inlet	Outlet	Length
243518AC15	2-1/4"	3-1/2"	18"
243522AC15	2-1/4"	3-1/2"	22"
254012AC15	2-1/2"	4"	12"
254018AC15	2-1/2"	4"	18"
254022AC15	2-1/2"	4"	22"
303512AC15	3"	3-1/2"	12"
304012AC15	3"	4"	12"

45 Degree Angle Cut



Part #	Inlet	Outlet	Length
202409AC	2"	2-1/4"	9"
242509AC	2-1/4"	2-1/2"	9"
243012AC	2-1/4"	3"	12"
243016AC	2-1/4"	3"	16"
243018AC	2-1/4"	3"	18"
243024AC	2-1/4"	3"	24"
243512AC	2-1/4"	3-1/2"	12"
243516AC	2-1/4"	3-1/2"	16"
243518AC	2-1/4"	3-1/2"	18"
243522AC	2-1/4"	3-1/2"	22"
253518AC	2-1/2"	3-1/2"	18"
253522AC	2-1/2"	3-1/2"	22"
244012AC	2-1/4"	4"	12"
244018AC	2-1/4"	4"	18"
254012AC	2-1/2"	4"	12"
254018AC	2-1/2"	4"	18"
254022AC	2-1/2"	4"	22"
304012AC	3"	4"	12"
304018AC	3"	4"	18"
304022AC	3"	4"	22"

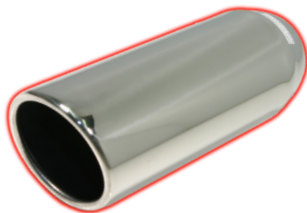


DW Slant

Part #	Inlet	Outlet	Length
ST013A	2-1/4"	3"	8"
ST013A12	2-1/4"	3"	12"
ST013A16	2-1/4"	3"	16"
ST013B	2-1/4"	3-1/2"	8"
ST013B12	2-1/4"	3-1/2"	12"
ST013B16	2-1/4"	3-1/2"	16"
ST013C	2-1/4"	4"	8"
ST013C12	2-1/4"	4"	12"
ST30013C12	3"	4"	12"

STAINLESS ENDINGS

Rolled Angle Cut



Part #	Inlet	Outlet	Length
243012RAC	2-1/4"	3"	12"
243016RAC	2-1/4"	3"	16"
243512RAC	2-1/4"	3-1/2"	12"
243516RAC	2-1/4"	3-1/2"	16"
243518RAC	2-1/4"	3-1/2"	18"
243522RAC	2-1/4"	3-1/2"	22"
244012RAC	2-1/4"	4"	12"
244018RAC	2-1/4"	4"	18"
253512RAC	2-1/2"	3-1/2"	12"
253518RAC	2-1/2"	3-1/2"	18"
254009RAC	2-1/2"	4"	9"
254012RAC	2-1/2"	4"	12"
254018RAC	2-1/2"	4"	18"
254022RAC	2-1/2"	4"	22"
303512RAC	3"	3-1/2"	12"
304012RAC	3"	4"	12"
304015RAC	3"	4"	15"

Turn Down



Part #	Inlet	Outlet	Length
3409TD	2"	2-1/4"	9"
4509TD	2-1/4"	2-1/2"	9"
5612TD	2-1/2"	2-3/4"	12"
6615TD	3"	3"	15"
6715TD	3"	3-1/2"	15"
7715TD	3-1/2"	3-1/2"	15"

Rolled Angle Cut



Clamp or Weld On

Part #	Inlet	Outlet	Length
4612RAC	2-1/4"	3"	12"
4616RAC	2-1/4"	3"	16"
4712RAC	2-1/4"	3-1/2"	12"
4718RAC	2-1/4"	3-1/2"	18"
4722RAC	2-1/4"	3-1/2"	22"
5618RAC	2-1/2"	3"	18"
5712RAC	2-1/2"	3-1/2"	12"
5718RAC	2-1/2"	3-1/2"	18"
5812RAC	2-1/2"	4"	12"
5818RAC	2-1/2"	4"	18"

Rolled Angle Cut



Bolt On

Part #	Inlet	Outlet	Length
6815RAB	3"	4"	15"

Oval Rolled Angle Cut



Clamp or Weld On

Part #	Inlet	Outlet	Length
ST083	2-1/4"	3"X4"	18"
ST082	2-1/4"	4"X5"	18"
ST055	2-1/4"	4"X5"	15"

BLACK CHROME

ST043S2 Length 9"

 Oval Rolled Slant
 IN 2-1/4" OUT 5-1/2" X 3"

ST0812 Length 9"

 Oval Rolled Slant
 IN 2-1/4" OUT 6 X 2-1/2"

ST0792 Length 9"

 Dual Oval Slant
 IN 2-1/4" OUT 3-1/2" X 3"

8915RAB2 Length 15"

 Bolt-On
 15 Degree Rolled Angle Cut
 IN 4" OUT 5"

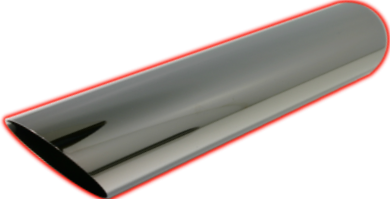

 15 Degree Rolled Angle Cut

Part #	Inlet	Outlet	Length
405012RAC2	4"	5"	12"
405015RAC2	4"	5"	15"
506015RAC2	5"	6"	15"

Rolled Angle

 15 Degree Rolled Angle Cut

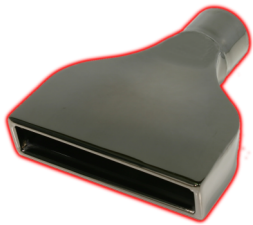
Part #	Inlet	Outlet	Length
243016RAC2	2-1/4"	3"	16"
243518RAC2	2-1/4"	3-1/2"	18"
243522RAC2	2-1/4"	3-1/2"	22"
244018RAC2	2-1/4"	4"	18"
254009RAC2	2-1/2"	4"	9"


 45 Degree Angle Cut

Part #	Inlet	Outlet	Length
243016AC2	2-1/4"	3"	16"
243522AC2	2-1/4"	3-1/2"	22"
243518AC2	2-1/4"	3-1/2"	18"
244018AC2	2-1/4"	4"	18"

ST027D2 Length 10"

 Slant
 IN 2-1/2" OUT 6" X 2-1/4"

ST027E2 Length 10"

 Slant
 IN 2-1/2" OUT 8" X 2-1/4"

BLACK POWDER COATED



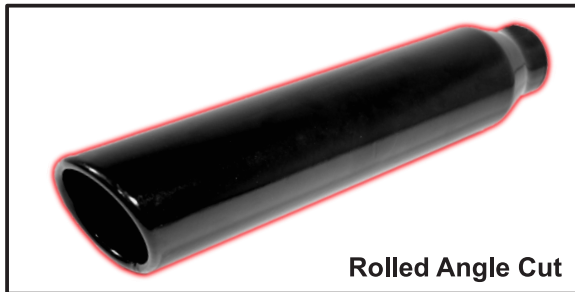
IN 2-1/2" OUT 6"X2-1/4"



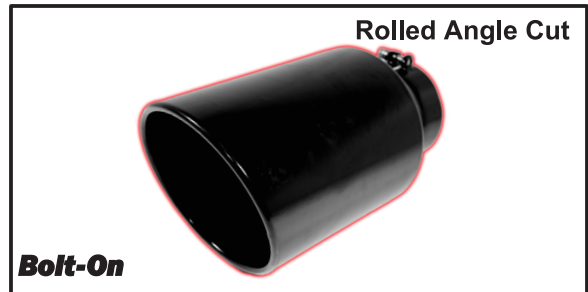
IN 2-1/2" OUT 8"X2-1/4"



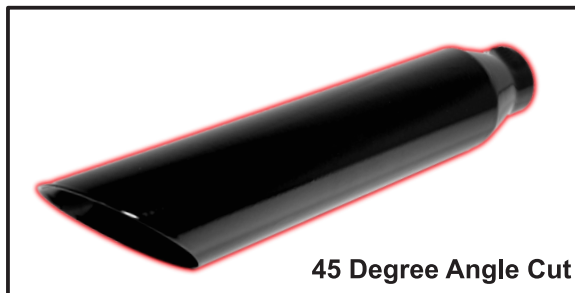
IN 2-1/4" OUT 6"X2-1/2"



Part #	Inlet	Outlet	Length
4612RACK	2-1/4"	3"	12"
4616RACK	2-1/4"	3"	16"
4707RACK	2-1/4"	3-1/2"	7"
4712RACK	2-1/4"	3-1/2"	12"
4718RACK	2-1/4"	3-1/2"	18"
5718RACK	2-1/2"	3-1/2"	18"
5809RACK	2-1/2"	4"	9"
5812RACK	2-1/2"	4"	12"
5818RACK	2-1/2"	4"	18"
303512RACK	3"	3-1/2"	12"
304012RACK	3"	4"	12"



Part #	Inlet	Outlet	Outlet
355015RACBK	3-1/2"	5"	15"
405012RACBK	4"	5"	12"
405015RACBK	4"	5"	15"
406012RACBK	4"	6"	12"
406015RACBK	4"	6"	15"
407015RACBK	4"	7"	15"
408015RACBK	4"	8"	15"
506015RACBK	5"	6"	15"
507015RACBK	5"	7"	15"
508015RACBK	5"	8"	15"



Part #	Inlet	Outlet	Length
4612ACK	2-1/4"	3"	12"
4712ACK	2-1/4"	3-1/2"	12"
4718ACK	2-1/4"	3-1/2"	18"
5718ACK	2-1/2"	3-1/2"	18"
5809ACK	2-1/2"	4"	9"
5818ACK	2-1/2"	4"	18"
405012ACBK*	4"	5"	12"

* /w Bolt



Part #	Inlet	Outlet	Length
405015TDBK	4"	5"	20"

PART NUMBER INDEX

Part #	Page	Part #	Page	Part #	Page	Part #	Page
202409AC	18	355012RACB	9	506018RACB	9	AC5644	11
242509AC	18	355015RAC	8	506018RAC	8	AC5644K	11
243012AC	18	355015RACBK	10,21	507015AC	8	AC56442	11
243012RAC	19	405012ACBK	10,21	507015ACB	9	AC5732	11
243016AC	18	405012PT	8	507015RAC	8	AC5732K	11
243016AC2	20	405012RAC	8	507015RACB	9	AC5744	11
243016RAC	19	405012RAC2	10,20	507015RACBK	10,21	AC5744K	11
243016RAC2	20	405012RACBK	10,21	508015AC	8	AC5832	11
243018AC	18	405014RAC	8	508015ACB	9	AC5832K	11
243024AC	18	405015PT	8	508015RACB	9	AC58322	11
243512AC	18	405015RAC	8	508015RACBK	10,21	AC5844	11
243512PT	12	405015RAC2	10,20	5612TD	8	AC5844K	11
243512RAC	19	405015RACBK	10,21	5615AC	19	AC58442	11
243512RADW	14	405015TD	7	5615F	7	PT42	12
243516AC	18	405015TDBK	10,21	5615FB	7	RA5632	11
243516RAC	19	405018RAC	8	5618AC	18	RA5632K	11
243518AC	18	406012RAC	8	5618RAC	19	RA56322	11
243518AC15	18	406012RACBK	10,21	5712AC	18	RA5644	11
243518AC2	20	406015RAC	8	5712RAC	19	RA5644K	11
243518PT	12	406015RACBK	10,21	5718AC	18	RA56442	11
243518RAC	19	406018RAC	8	5718ACK	21	RA5732	11
243518RAC2	20	407015AC	8	5718RAC	19	RA5732K	11
243522AC	18	407015ACB	9	5718RACK	21	RA57322	11
243522AC15	18	407015RAC	8	5722AC	21	RA5744	11
243522AC2	20	407015RACB	9	5809ACK	22	RA5744K	11
243522PT	12	407015RACBK	10,21	5809RACK	21	RA57442	11
243522RAC	19	407018ACB	9	5812RAC	19	RA5832	11
243522RAC2	20	407018RAC	9	5812RACK	21	RA5832K	11
244012AC	18	407018RACB	9	5818AC	18	RA58322	11
244012RAC	19	408015ACB	9	5818ACK	21	RA5844	11
244018AC	18	408015RACB	9	5818RAC	19	RA5844K	11
244018AC2	20	408015RACBK	10,21	5818RACK	21	RA58442	11
244018RAC	19	408018ACB	9	5822AC	18	SM105S	4
244018RAC2	20	408018RACB	9	6015RAB	9	SM106S5	4
253512RAC	19	4312RS	5	6615TD	19	SM106S6	4
253518AC	18	4315RS	5	6715TD	19	SM111	4
253518PT	12	4509TD	19	6815RAB	9	SM115	4
253518RAC	19	4512RS	5	7715TD	19	SM117	4
253522AC	18	4515F	7	7815RAB	9	SM123	4
254009RAC	19	4515FB	7	8012AC	9	SM125	4
254009RAC2	20	4515RS	5	8012ACB	9	SM1255	4
254012AC	18	4612AC	18	8012AB	8	SM1256	4
254012AC15	18	4612ACK	21	8015AC	8	SM129	4
254012RAC	19	4612RAC	19	8015ACB	9	SM142S	4
254018AC	18	4612RACK	21	8015RAB	9	SM142S5	4
254018AC15	18	4616AC	18	8018ACB	9	SS5	4
254018RAC	19	4616RAC	19	8018RAB	9	SS58	4
254022AC	18	4616RACK	21	8912AC	8	SS6	4
254022AC15	18	4707RACK	21	8912ACB	9	ST006	12
254022RAC	19	4712AC	18	8912PT	8	ST007	12
303512AC15	18	4712ACK	21	8912RAB	9	ST007A	12
303512RAC	19	4712RAC	19	8915AC	8	ST007B	12
303512RACK	21	4712RACK	21	8915ACB	9	ST009	12
304012AC	18	4718AC	18	8915RAB	9	ST012C	12
304012AC15	18	4718ACK	21	8915RAB2	10,20	ST013A	18
304012RAC	19	4718RAC	19	8918RAB	9	ST013A12	18
304012RACK	21	4718RACK	21	9012AC	8	ST013A16	18
304015RAC	19	4722AC	18	9012ACB	9	ST013B	18
304018AC	18	4722RAC	19	9012RAB	9	ST013B12	18
3409TD	19	505015TD	7	9015AC	8	ST013B16	18
3512RS	5	506012RAC	8	9015ACB	9	ST013C	18
3515RS	5	506014RAC	8	9015RAB	9	ST013C12	18
354012RAC	8	506015RAC	8	AC5632	11	ST014	12
354015RAC	8	506015RAC2	10,20	AC5632K	11	ST015	14
355012RAC	8	506015RACBK	10,21	AC56322	11	ST015S	15

PART NUMBER INDEX

Part #	Page	Part #	Page
ST024	12	ST123C	17
ST025A	12	ST123C1	17
ST025S	17	ST124L	16
ST026S	17	ST124R	16
ST027D	6	ST125B	7
ST027D2	6,20	ST125F	7
ST027DK	6,21	ST130	17
ST027E	6	ST131	16
ST027E2	6,20	ST132	15
ST027EK	6,21	ST133	15
ST027G	6	ST135A	15
ST027H	6	ST135B	15
ST027R	6	ST135C	15
ST038S	13	ST136A	15
ST039A	13	ST136B	15
ST039B	13	ST136C	15
ST040	13	ST139	15
ST041	13	ST140	15
ST042	13	ST141	14
ST043S	13	ST2004L	16
ST043S2	20	ST2004R	16
ST045D	16	ST25013B16	16
ST045L	16	ST25013C16	16
ST045P	16	ST251612	12
ST045R	16	ST251615	12
ST048	17	ST251709	12
ST049	15	ST251712	12
ST052	15	ST30013C12	18
ST053	15	ST301612	12
ST05312	15	ST301615	12
ST054	15	ST301712	12
ST055	19	ST40013D12	10
ST062	14	ST538N	10
ST062N	14	ST538NS	10
ST070	13	ST538S	10
ST075	13	ST540NS	10
ST076	13	ST541NS	10
ST079	17	ST590NS	10
ST0792	20	ST591NS	10
ST080	17		
ST081	13		
ST0812	20		
ST081K	21		
ST082	19		
ST083	19		
ST084	17		
ST090	14		
ST091	14		
ST092	15		
ST093	15		
ST101	14		
ST1021R	16		
ST1021L	16		
ST10970B	16		
ST110	7		
ST11070B	7		
ST111	7		
ST114	14		
ST116	13		
ST118	14		
ST119	14		
ST120L	16		
ST120R	16		
ST121	17		
ST123	17		