



**PRO-UTV
PERFORMANCE
SUSPENSION**





Eibach has been a leader in off-road race suspension for over 30 years. We have taken Champions such as Ivan “Ironman” Stewart, Robby Gordon and Bryce Menzies to the top of the podium.

Using those same championship winning race springs, we have created a line of industry leading performance spring and stabilizer bar systems for your machine. Each component is tested and developed by our team of engineers as a plug-and-play solution to deliver the maximum performance from your factory dampers.

All of our PRO-UTV systems are proudly made by Eibach in Corona, California.

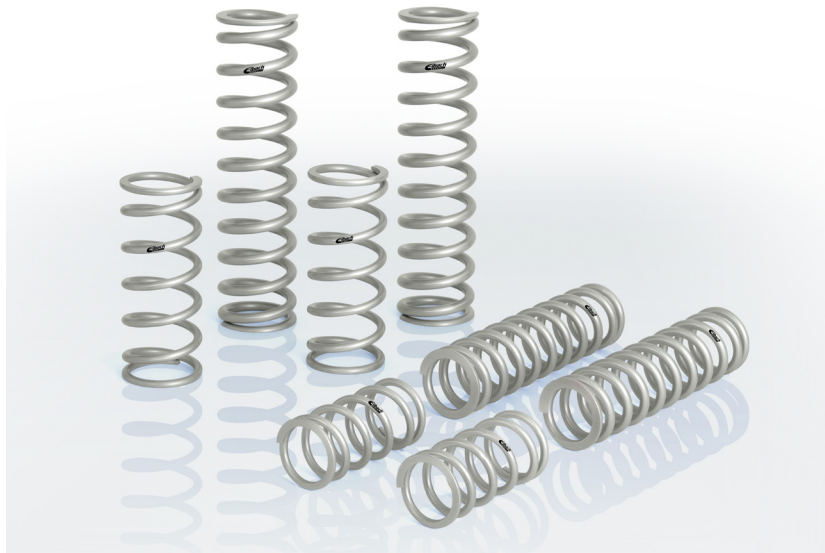
PRO-UTV Stage 2 – Perfect for the weekend warrior. Designed for 2 or 4 seat vehicles, this system delivers the confidence and control you need to keep the hammer down and lead the pack. Adjustable lockout collars allow fine tuning of the transition point of the dual spring setup—for a smooth ride over rough terrain and the higher additional rate to prevent bottoming in the g-outs. You will immediately notice better turn-in response and stay hooked-up to power out of the turns.

PRO-UTV Stage 3 – Engineered for the 2 or 4-seat vehicles with higher loads and additional passengers. This system offers a slightly more aggressive spring rate to maintain the balance you need at the limit. Adjustable lockout collars allow fine tuning of the transition point of the dual spring setup—for a plush ride over rough terrain and the higher additional rate to prevent bottoming. Perfect for vehicles loaded with spares, tools and passengers.





CAN-AM

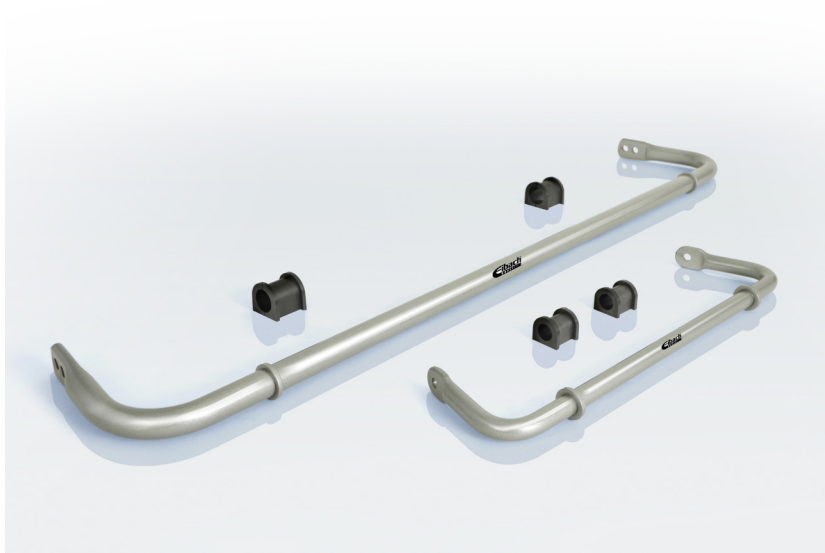


CAN-AM MAVERICK X3 X

Spring Systems

Year	Model	Stage	Front Rates (lbs/inch)	Rear Rates (lbs/inch)	Part Number
2017-2018	BASE/DS	2	200/250	200/250	E85-212-005-02-22
		3	200/250	200/300	E85-212-005-03-22
2017-2018	RS	2	250/250	200/300	E85-212-004-02-22
		3	250/250	200/350	E85-212-004-03-22
2017-2018	BASE/DS MAX	2	200/300	200/350	E85-212-007-02-22
		3	200/350	200/400	E85-212-007-03-22
* 2017-2018	RS MAX	2	300/300	250/350	E85-212-006-02-22
		3	300/300	250/400	E85-212-006-03-22

*Featured image



CAN-AM MAVERICK X3 X **Stablizer Bars**

- Front bar 20mm, non-adjustable and Rear bar 29mm, 2 way adjustable
- Reduced body roll through increased design stiffness over stock sway bar
- Engineered to perfectly complement each PRO-UTV Spring System
- Easy-direct replacement installation



POLARIS

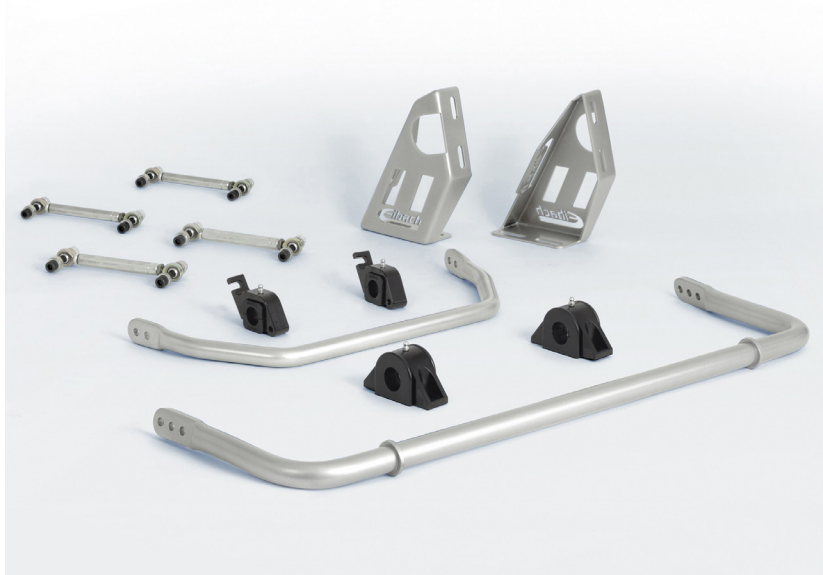




POLARIS RZR TURBO DYNAMIX

Spring Systems

Year	Model	Stage	Front Rates (lbs/inch)	Rear Rates (lbs/inch)	Part Number
2018-2018	TURBO DYNAMIX	2	250/300	200/225	E85-209-011-02-22
		3	250/350	200/300	E85-209-011-03-22



POLARIS RZR TURBO DYNAMIX **Stabilizer Bars (with optional brace and end links)**

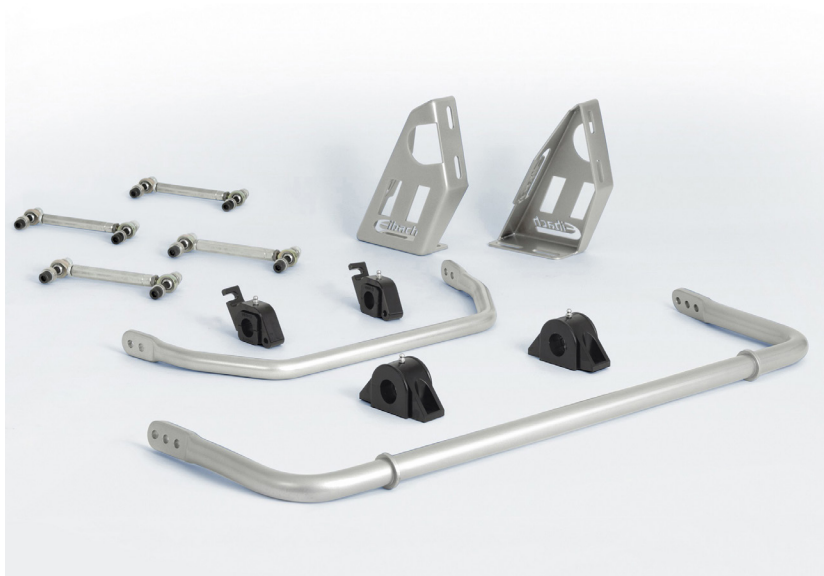
- Front bar 25mm, 2 way adjustable and Rear bar 30mm, 3 way adjustable
- Reduced body roll through increased design stiffness over stock sway bar
- Engineered to perfectly complement each PRO-UTV Spring System
- Easy-direct replacement installation



POLARIS XP TURBO

Spring Systems

Year	Model	Stage	Front Rates (lbs/inch)	Rear Rates (lbs/inch)	Part Number
2015-2016	TURBO EPS 2-seat	2	250/300	200/250	E85-209-006-02-22
		3	250/300	200/300	E85-209-006-03-22
2016-2016	TURBO EPS 4-seat	2	300/300	250/300	E85-209-003-02-22
		3	300/350	250/350	E85-209-003-03-22
2017-2017	1000 Turbo 2-seat	2	250/300	200/250	E85-209-009-02-22
		3	250/300	200/300	E85-209-009-03-22
* 2017-2017	1000 Turbo 4-seat	2	300/300	250/300	E85-209-010-02-22
		3	300/350	250/350	E85-209-010-03-22
2018-2018	1000 Turbo *w/e	2	350/350	200/300	E85-209-012-02-22
		3	350/400	200/350	E85-209-012-03-22



POLARIS XP TURBO

Stabilizer Bars (with optional brace and end links)

- Front bar 25mm 2 way adjustable and Rear bar 30mm 3 way adjustable
- Reduced body roll through increased design stiffness over stock sway bar
- Engineered to perfectly complement each PRO-UTV Spring System
- Easy-direct replacement installation



POLARIS XP900 | XP1000

Spring Systems

Year	Model	Stage	Front Rates (lbs/inch)	Rear Rates (lbs/inch)	Part Number
2011-2014	RZR XP 900 **t/a	2	300/300	325/300	E85-209-005-02-22
		3	300/350	325/350	E85-209-005-03-22
2014-2016	RZR XP 1000 EPS	2	200/250	150/300	E85-209-001-02-22
* 2014-2016	RZR XP 4 1000 EPS	2	350/350	150/300	E85-209-001-01-22
		3	350/400	250/300	E85-209-001-03-22
2017-2017	RZR XP 1000 2-seat	2	200/250	150/300	E85-209-007-02-22
2017-2017	RZR XP 4 1000	2	350/350	150/300	E85-209-008-02-22
		3	350/400	250/300	E85-209-008-03-22

* Featured image ** t/a = Trailing Arm



POLARIS XP900 | XP1000 **Stabilizer Bar (with optional end links)**

- Rear bar 29mm 3 way adjustable
- Reduced body roll through increased design stiffness over stock sway bar
- Engineered to perfectly complement each PRO-UTV Spring System
- Easy-direct replacement installation
- Made by Eibach



POLARIS 900

Spring Systems

Year	Model	Stage	Front Rates (lbs/inch)	Rear Rates (lbs/inch)	Part Number
* 2015-2016	2-seat *d/a	2	200/275	350/400	E85-209-005-05-22
		3	200/300	350/450	E85-209-005-06-22
2015-2016	2-seat *d/a *f/r	2	200/275	300/400	E85-209-005-07-22
2011-2014	4-seat *t/a	2	350/350	300/350	E85-209-004-02-22
		3	350/400	300/400	E85-209-004-03-22

*Featured image * d/a = Dual Arm *t/a = Trailing Arm *f/r = Fox Reservoir shocks



POLARIS 900S | 1000S

Spring Systems

Year	Model	Stage	Front Rates (lbs/inch)	Rear Rates (lbs/inch)	Part Number
2015-2016	900s 2-seat *d/a	2	200/275	350/400	E85-209-005-05-22
		3	200/300	350/450	E85-209-005-06-22
2015-2016	900s 2-seat *d/a *f/r	2	200/275	300/400	E85-209-005-07-22
* 2015-2016	1000s 2-seat *d/a	2	200/275	350/400	E85-209-005-05-22
		3	200/300	350/450	E85-209-005-06-22
2015-2016	1000s 2-seat *d/a *f/r	2	200/275	300/400	E85-209-005-07-22

* Featured image * d/a = Dual Arm * f/r = Fox Reservoir shocks



A close-up, low-angle shot of a Yamaha off-road vehicle, possibly a UTV or ATV, as it descends a sandy dune. The vehicle's front wheel, featuring a deep-tread tire, is prominent in the lower-left foreground. A red roll-over protection bar is visible. The background is a vast, arid desert landscape with sparse, low-lying shrubs under a bright, hazy sky. The overall color palette is dominated by warm, earthy tones of sand and brown.

YAMAHA



YAMAHA YXZ1000R

Spring Systems

Year	Model	Stage	Front Rates (lbs/inch)	Rear Rates (lbs/inch)	Part Number
* 2016-2016	BASE/SE (non-ss)	2	250/225	250/200	E85-211-001-02-22
		3	250/275	250/250	E85-211-001-04-22
2017-2017	BASE/SS (non-se)	2	250/225	250/200	E85-211-001-02-22
2017-2017	SE, SS/SE	2	250/225	250/200	E85-211-002-02-22

*Featured image



YAMAHA YXZ1000R **Stabilizer Bars (with optional end links)**

- Front bar 16mm, 2 way adjustable and Rear bar 35mm, 2 way adjustable
- Reduced body roll through increased design stiffness over stock sway bar
- Engineered to perfectly complement each PRO-UTV Spring System
- Easy-direct replacement installation

PRO-UTV HARDWARE/ ACCESSORIES







REINFORCEMENT BRACE **Performance Hardware**

- No cutting or welding required
- Strengthens chassis and reinforces OEM sway bar mounts
- Durable multi-stage powder coating
- Laser cut high grade steel
- Includes required hardware



STABILIZER BAR ENDLINKS

Performance Hardware

- Adjustable end links for precise tuning
- Heat treated alloy steel Aurora® spherical rod ends
- Heavy-duty aluminum design for increased durability
- Misalignment spacers and hardware included



ANTI-SLIP SPANNER WRENCH

Pro-UTV Tools

- Positive engagement, anti-slip grip spanner wrenches
- Specifically engineered to work with each model UTV shock collar

Model	Spring Perch Part Number	Crossover Part Number
FOX 2.0	ETFX2.0	ETXR2.0
FOX 2.5	ETFX2.5	ETXR2.5
FOX 3.0	ETFX3.0	ETXR3.0
WALKER EVANS 2.0	ETWE2.0	ETXR2.0
WALKER EVANS 2.5	ETWE2.5	ETXR2.5



ACCESSORIES

Replacement Hardware and Accessories

- Crossover rings are CNC precision machined for accuracy
- Sliders to connect main and secondary springs
- Lightweight, durable adapters for 2.5 and 3.75in diameter springs
- Spring bags available in neoprene/nylon for protection against spring and shaft damage