



## Applications:

Years	Make	Models
2016	Toyota	Tacoma

\*Visit our website for the most up to date information regarding application years and trim levels.



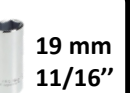



## Installation Time: **20 min**

The time listed above is the average time for professional installers. If you do not feel comfortable performing this installation on your own or are in need of assistance, please contact a professional installer.



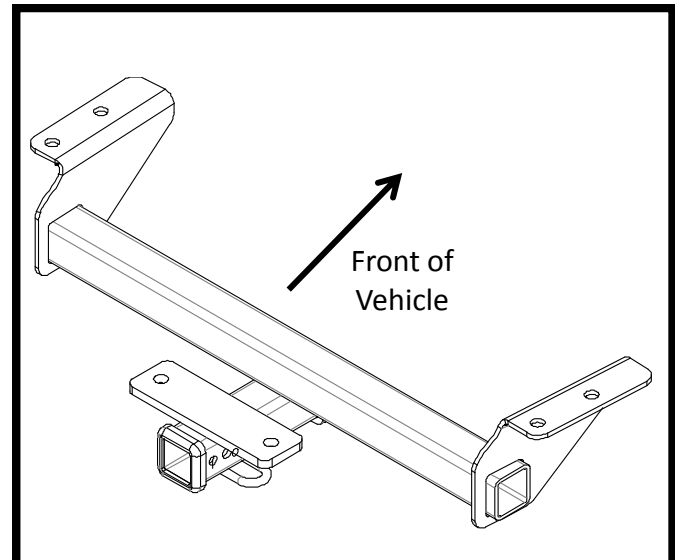
**Representative Vehicle Photo**

## Equipment Required:

 Safety Glasses	 Ratchet	 19 mm 11/16" Sockets	 6" Socket Extension	 Torque Wrench
 Tap M12x1.25				

## DO NOT EXCEED LOWER OF TOWING VEHICLE MANUFACTURER'S RATING OR:

Hitch Type	Max Gross Trailer Weight	Max Tongue Weight
Weight Carrying	7000 lb. (3178 kg)	1050 lb. (476 kg)
Weight Distributing	8000 lb. (3632 kg)	1200 lb. (545 kg)



**Hitch Illustration**



Always wear SAFETY GLASSES when installing hitch

# Installation Instructions

PART NUMBERS: 75238, 84238

Fastener Kit: 75238F

①	Qty. (4)	Bolt M12 1.25x40, CL10.9	
②	Qty. (4)	Conical washer 1/2"	
③	Qty. (2)	Carriage bolt 7/16"-14x1.25, GR5	
④	Qty. (2)	Spacer .109 with SQ. hole	
⑤	Qty. (2)	Pull wire 7/16"	
⑥	Qty. (2)	Conical washer 7/16"	
⑦	Qty. (2)	Hex nut 7/16"-14 GR2	

Fasteners typical both sides

Teeth side against hitch



Figure 3

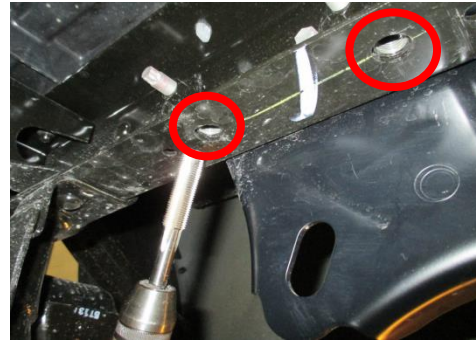


Figure 2

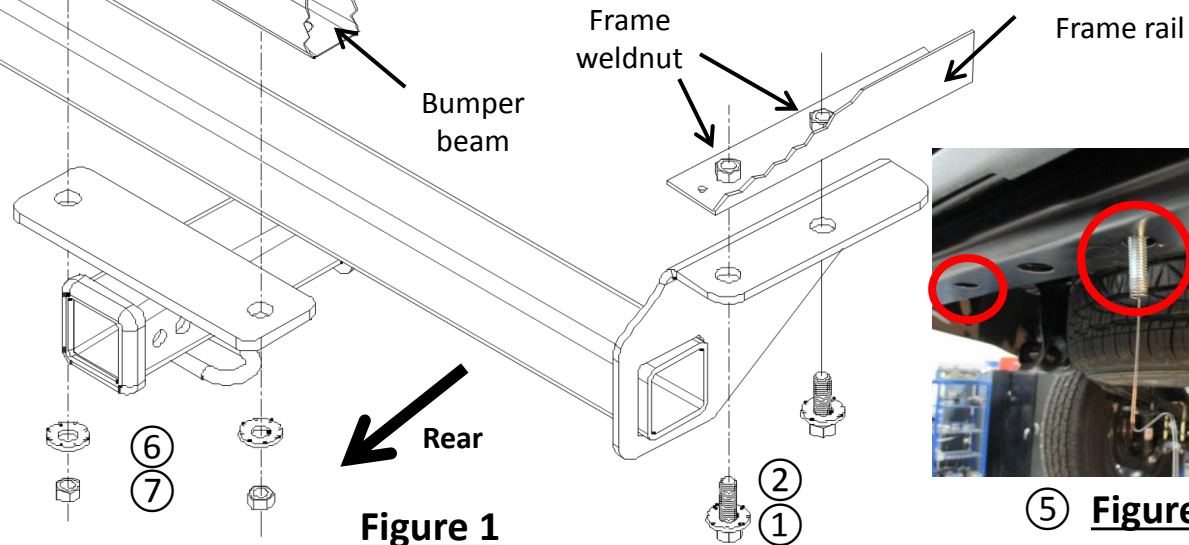


Figure 1



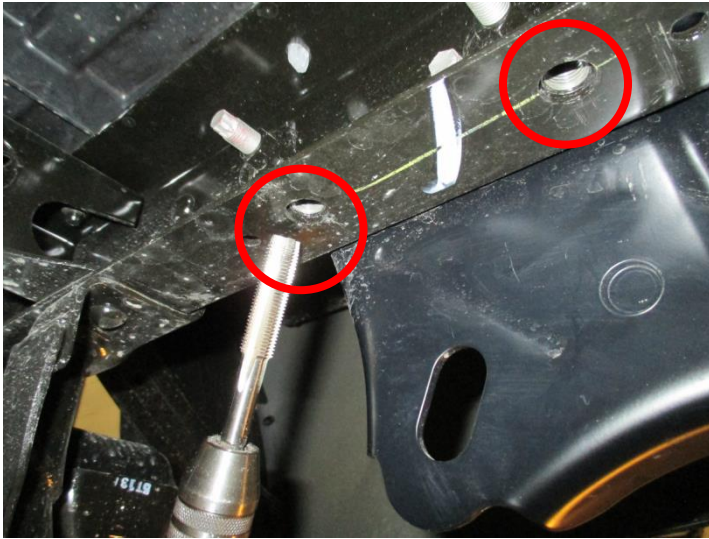
Figure 4

1. Weldnut cleaning – use a M12x1.25 tap to clean (2) weldnuts at the end of frame rail each side if necessary, see Figure 2.
2. Hitch installation – insert pull wires (5) into bumper beam through bumper beam side opening and then use them to feed carriage bolts (3) and spacer (4) into bumper beam, see Figure 3, 4. Leave pull wires attached. Raise the hitch into position and feed carriage bolts through top plate holes, see Figure 1. Loosely install M12 bolts (1) and conical washers (2) through bracket holes into frame weldnuts. Loosely install nut (7) and conical washer (6) on carriage bolts.
3. **Tighten all M12 fasteners with torque wrench to 105 Lb.-Ft. (142 N\*M) and all 7/16" fasteners to 50 Lb.-Ft. (68 N\*M)**

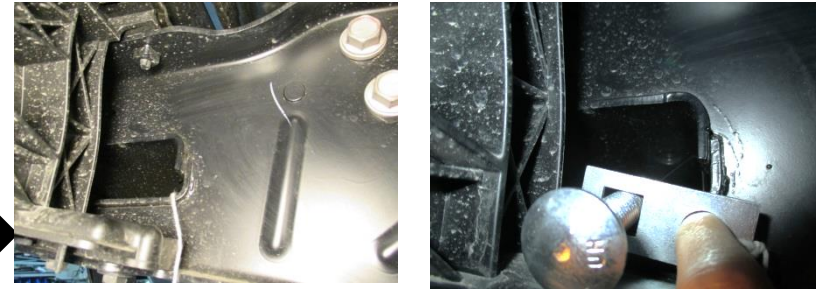
**⚠ Proper torque is needed to keep the hitch secure to the vehicle when towing.**

Note: check hitch frequently, making sure all fasteners and ball are properly tightened. If hitch is removed, plug all holes in trunk pan or other body panels to prevent entry of water and exhaust fumes. A hitch or ball which has been damaged should be removed and replaced. Observe safety precautions when working beneath a vehicle and wear eye protection. Do not cut access or attachment holes with a torch.

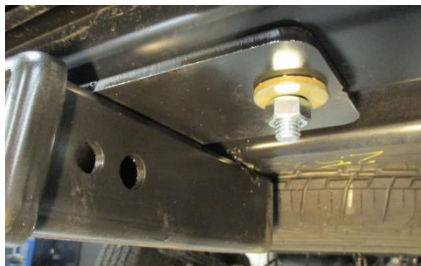
1. Weldnut cleaning – use a M12x1.25 tap to clean (2) weldnuts at the end of frame rail each side if necessary, see Figure 2.



2a. Hitch installation – insert pull wires (5) into bumper beam through bumper beam side opening and then use them to feed carriage bolts (3) and spacer (4) into bumper beam, see Figure 3, 4. Leave pull wires attached.



2b. Raise the hitch into position and feed carriage bolts through top plate holes, see Figure 1. Loosely install M12 bolts (1) and conical washers (2) through bracket holes into frame weldnuts. Loosely install nut (7) and conical washer (6) on carriage bolts.



3. **Tighten all M12 fasteners with torque wrench to 105 Lb.-Ft. (142 N\*M) and all 7/16" fasteners to 50 Lb.-Ft. (68 N\*M)**

**⚠ Proper torque is needed to keep the hitch secure to the vehicle when towing.**



Learn more about trailer hitches and towing we have.