



# Installation Instructions

PART NUMBERS: 76076, 84076,  
CQT76076

## Applications:

Years	Make	Models
2017-Current*	Audi	Q7

**Installation Time: 60 min.**

The time listed above is the average time for professional installers. If you do not feel comfortable performing this installation on your own or are in need of assistance, please contact a professional installer.



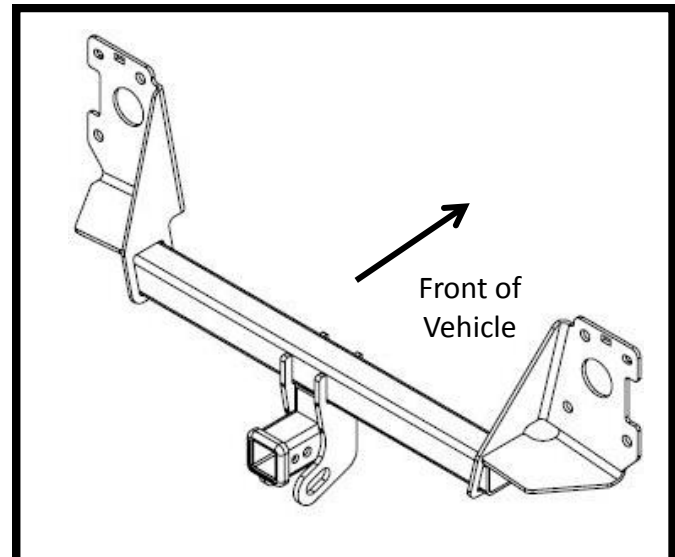
**Representative Vehicle Photo**

## Equipment Required:

Safety Glasses	Ratchet	T25 Torx 18MM Sockets	Torque Wrench
Plastic Trim Tools	Flat Head Screw Driver	6" Socket Extension	Tin Snips

**DO NOT EXCEED LOWER OF TOWING VEHICLE  
MANUFACTURER'S RATING OR:**

Hitch Type	Max Gross Trailer Weight	Max Tongue Weight
Weight Carrying	7700 lb. (3496 kg)	770 lb. (349 kg)
Weight Distributing	N/A	N/A

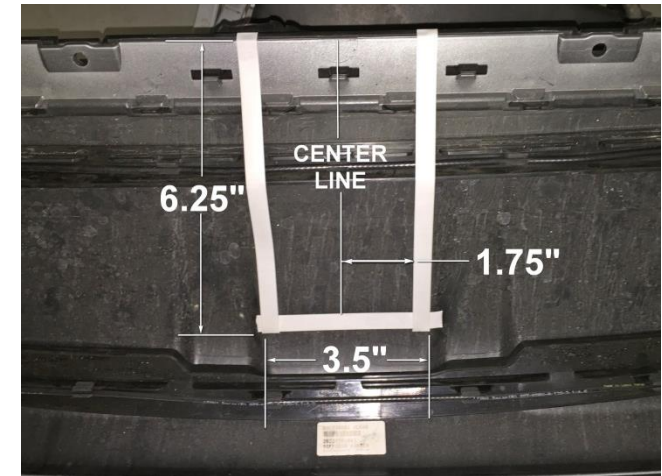
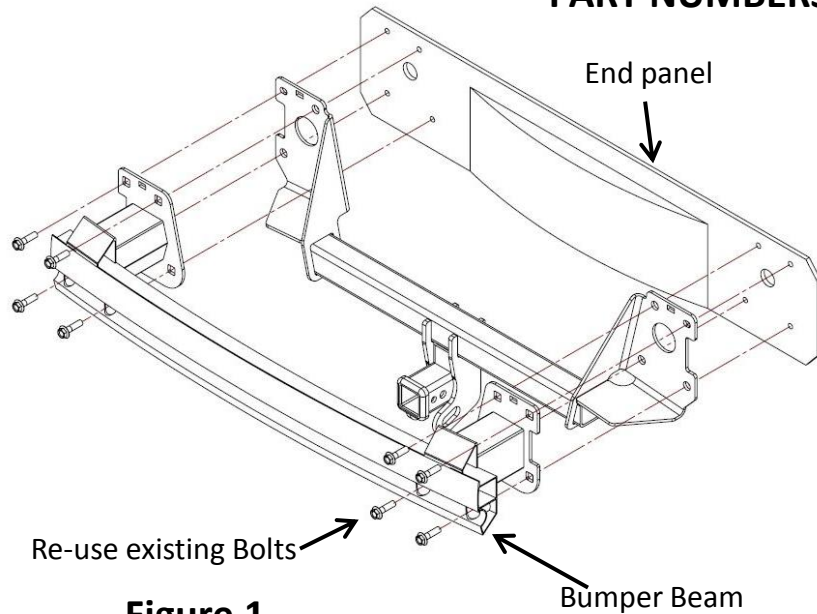


**Hitch Illustration**

**Always wear SAFETY GLASSES  
when installing hitch**

# Installation Instructions

**PART NUMBERS: 76076, 84076, CQT76076**



## Remove bumper fascia and bumper beam.

1. Remove screws using T25 Torx bit – Remove (4) screws exposed at wheel well liner. Pull back wheel liner to expose an additional (1) screw for removal. Remove (2) screws from the bottom of each wheel well liner. Remove (4) screws from the middle underside area of the fascia. Do the same on both sides of vehicle.
2. Gently pry/pull off the body trim piece at the upper wheel well to expose (2) screws to be removed, using T25 Torx bit. Note: Plastic body panel removal tools suggested to ease removal.
3. Gently pull off vehicle bumper fascia. Note: Plastic body panel removal tools suggested to ease removal. You will need to disconnect/unplug all electric connectors from sensors and lights attached to the bumper fascia and unclip the wiring from the bumper fascia to remove it from the vehicle. Set the bumper fascia aside.
4. Remove the bumper beam by removing (4) bolts each side with an 18mm socket.

## Install hitch.

1. Raise hitch and bumper beam into position aligning holes with weldnuts in the vehicle end panel. Sandwich the hitch between the bumper beam and the end panel. Re-use existing bolts. See Figure 1.
2. **Tighten all hitch fasteners with torque wrench to 68 Lb.-Ft. (92 N\*M)**

**⚠ Proper torque is needed to keep the hitch secure to the vehicle when towing.**

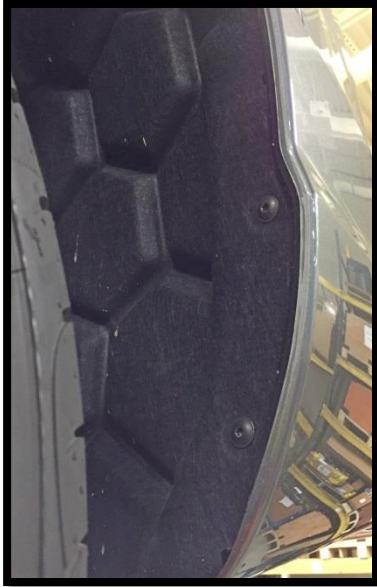
## Trim and reinstall vehicle fascia.

1. Unclip the sensor antenna wire from the vehicle forward edge of the inside of the bumper fascia to move it out of the trim area. Figure 2
2. Trim fascia as shown in Figure 3.
3. Reinstall fascia in reverse order of steps 1-3.
4. Once bumper fascia is in place, re-attach the sensor antenna wire.

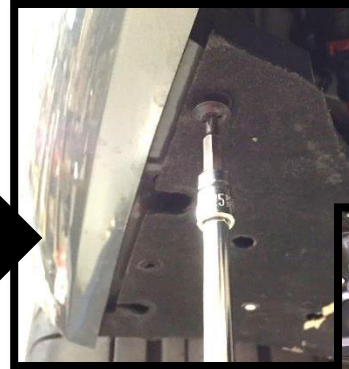
Note: check hitch frequently, making sure all fasteners and ball are properly tightened. If hitch is removed, plug all holes in trunk pan or other body panels to prevent entry of water and exhaust fumes. A hitch or ball which has been damaged should be removed and replaced. Observe safety precautions when working beneath a vehicle and wear eye protection. Do not cut access or attachment holes with a torch.

This product complies with safety specifications and requirements for connecting devices and towing systems of the state of New York, V.E.S.C. Regulation V-5 and SAE J684.

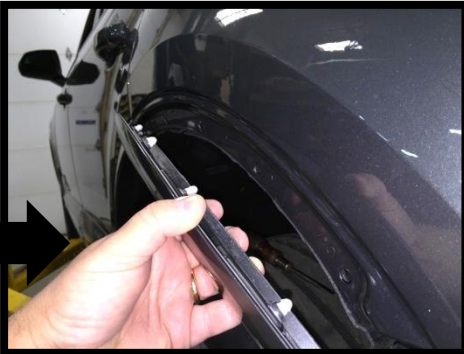
Remove screws using T25 Torx bit – Remove (4) screws exposed at wheel well liner. Pull back wheel liner to expose an additional (1) screw for removal.



Remove (2) screws from the bottom of each wheel well liner. Remove (4) screws from the middle underside area of the fascia. Do the same on both sides of vehicle.



Gently pry/pull off the body trim piece at the upper wheel well to expose (2) screws to be removed, using T25 Torx bit. Note: Plastic body panel removal tools suggested to ease removal.



Gently pull off vehicle bumper fascia. Note: Plastic body panel removal tools suggested to ease removal. You will need to disconnect/unplug all electric connectors from sensors and lights attached to the bumper fascia and unclip the wiring from the bumper fascia to remove it from the vehicle. Set the bumper fascia aside.



Remove the bumper beam by removing (4) bolts each side with an 18mm socket.

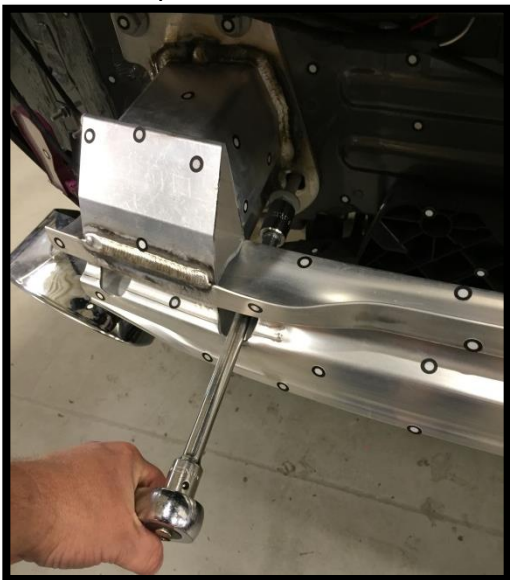


Raise hitch and bumper beam into position aligning holes with weldnuts in the vehicle end panel. Sandwich the hitch between the bumper beam and the end panel. Re-use existing bolts. See Figure 1.

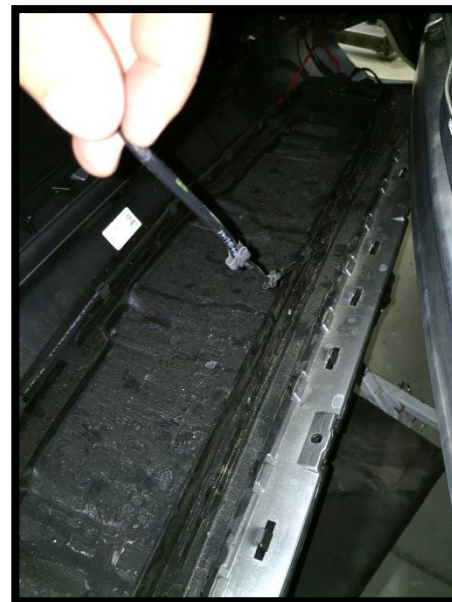


Tighten all hitch fasteners with torque wrench to 68 Lb.-Ft. (92 N\*M)

**⚠** Proper torque is needed to keep the hitch secure to the vehicle when towing.



Unclip the sensor antenna wire from the vehicle forward edge of the inside of the bumper fascia to move it out of the trim area. Figure 2



Trim fascia as shown in Figure 3.



Reinstall fascia in reverse order of steps 1-3.

Once bumper fascia is in place, re-attach the sensor antenna wire.



Check out a selection of trailer hitches and towing offered in our online store.