

**HIGH PERFORMANCE
ALUMINUM RADIATORS**



2021 MASTER
CATALOG



ABOUT

DeWitts™ aluminum radiators are made in Michigan and 100% of the manufacturing process is managed in house. Our CAB brazing furnace allows us to produce the finest aluminum cores in the industry. We have the capability to build custom aluminum radiators with a variety of tube widths and fin designs. We have several fin machines to produce the type of fin required for your application. Most of our radiators are assembled with press-formed end tanks. This eliminates the fabrication seams and potential leak points of a common box tank. It also provides an original look for those classic cars. Every radiator is available with our Black Ice Coating. We have expanded our line to many other makes and models. If you do not see your application listed, just give us call and we'll custom build one for you.



MADE IN THE USA

Located in Howell, Michigan, our modern facility is the ultimate location for proto-typing and developing your next project.



LEADING ENGINEERING

Our engineering professionals use the most advanced platforms, such as SolidWorks, to design the most innovative products in the industry.



ADVANCED MANUFACTURING

Our robotic welding cell for high volume production features a new Fanuc Robot and CMT technology. We also have water jet, laser cut, CNC brake and other capabilities.



NEW - ISO 9001:2015 CERTIFICATION

DeWitts™ is ISO 9001:2015 certified, which is an international standard of organization. It lets customers, like you, know that we are committed to quality.



PROJECT CONSULTATION

With over 100 years of combined experience, the DeWitts™ staff is ready to help you get the best cooling package implemented for your project.



CONTENTS

- 4 BRAZING SERVICES
- 6 CORVETTE RESTORATION
- 8 CORVETTE
- 22 CAMARO
- 25 CHEVELLE
- 28 CHEVY
- 30 IMPALA
- 33 CADILLAC
- 34 C10 & TRUCK
- 36 MUSTANG
- 40 FAN KITS
- 43 ACCESSORIES

WE OFFER COMPLETE BRAZING SERVICES INCLUDING DESIGN AND DEVELOPMENT OF BRAZING FIXTURES.

■ BRAZING CONSULTATION & DEVELOPMENT

Let our experts guide you through the process and develop a plan that fits your needs, budget, and timeline.

■ PRODUCTION BRAZING

Our brazing knowledge and experience will help minimize the cost of your prototype and development.

■ ALUMINUM CORES

We produce high-quality aluminum cores for many types of industries. Single row core sizes are 1.00", 1.25", and 1.50". Dual row core sizes are 1.00" and 1.25".

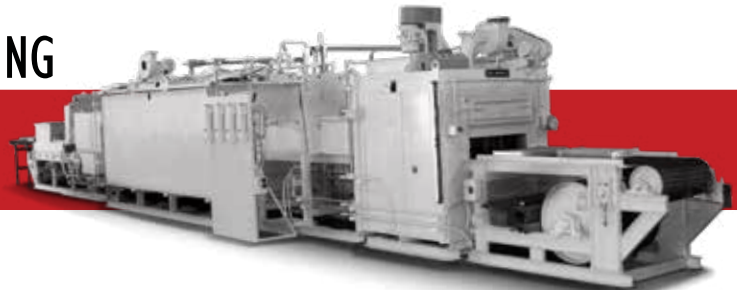
■ HEADERS

Custom header lengths are available with custom side channel options.



STATE-OF-THE-ART ALUMINUM BRAZING

FURNACE SPECIFICATIONS 30" WIDE BELT
8" PASS HEIGHT



OUR CORE STANDARDS

- EXTRUDED SIDE CHANNELS.
- TWO SIDE CLADDED HEADERS.
- SERPENTINE FIN.

Serpentine
Louvered
Fin @ 15fpi

Clad Fillets
on Both
Sides

Double
Cladded .080
Headers



The furnace is controlled via a touch screen HMI panel. Each component uses a unique brazing profile that is developed and saved as a recipe. This recipe includes belt speed, zone temperatures, and nitrogen flow. The system software also provides features such as historical brazing data and maintenance scheduling.

STAINLESS STEEL "HOTBOX" DATA RECORDER

Brazing profiles are created for each core based on the total mass weight. The furnace temperatures and belt speeds are adjusted based on feedback from a data recorder. The hotbox ensures a quality braze profile for each core.



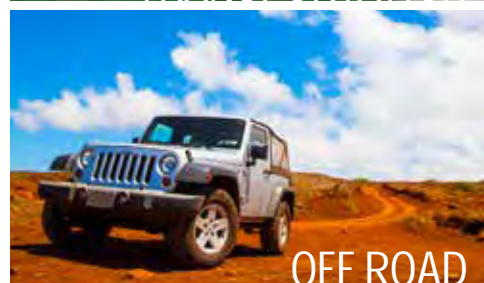
QUALITY CONTROL

Every part of a core is important, but the quality of the headers is an absolute must. The tube slots must be punched with a maximum of .002" clearance for a precise tube fit. While others use single sided clad material, DeWitts™ uses double sided clad for all the headers. This provides a fillet joint around the tube on both sides of the header, doubling the strength of the joint. You simply cannot build a better, stronger core. The use of .080 double clad material and extruded side channels provides a core strong enough to handle over one million pressure cycles, without a tube-to-header joint failure. DeWitts™ is ISO 9001:2015 certified and committed to producing only the highest quality products.



MARKETS & APPLICATIONS

- HEATER CORES
- TRANSMISSION COOLERS
- CHARGE AIR COOLERS
- RADIATORS
- HVAC
- OIL COOLERS
- CONDENSERS
- SHROUDS





32-940B

CORVETTE RESTORATION RADIATORS

DeWitts™ exclusive Restoration Radiators™ are 100% exact reproductions for all 1960-1972 Corvettes. This “stacked plate” type radiator is the ultimate in performance and is brazed with today’s state of the art techniques. Each radiator is uniquely date coded, to match your Corvette build date.

Model Year	GM Part#	Details	
1960-1961	3157516	Flat Top Tank	32-940A
1960-1961	3151116	Top Tank With Ribs	32-940B



32-943B

Model Year	GM Part#	Details	
1961	3150916	Non-Painted / Bump Casting	32-943A
1961	3150916	Painted / Bump Casting	32-943B
1962	3150916	Flat Casting / Tag Dated	32-944A
1962	3150916	Flat Casting / Stamp Dated	32-944B



32-941

Model Year	GM Part#	Details	
1965-1972	3155316	1" Wide Mount	32-941
1963-1964	3155316	2" Wide Mount	32-942
1965 396 & L88	3007436	2nd Design Curved Neck	32-955
1965	-	1965 / 396 Early Restoration	32-945

RESTORATION COPPER / BRASS RADIATORS

DeWitts™ restoration radiator for the 1966-68 Big Block Corvette GM# 3008567 (Manual transmission only). This radiator includes a new 4 row copper core with correct factory style top and bottom supports, including the square cut outs and center dimples. The 1967 model also includes the factory style round holes in the top and bottom channels. New press formed tanks, full rib pattern, "Fill Cold", "Harrison" embossments, along with the correct "MK" tag and GM part # makes this radiator 100% factory correct.

Model Year	Details	
1966	1966 Big Block Corvette Copper/ Brass Radiator	32-BC66M
1967-1968	1967-1968 Big Block Corvette Copper/ Brass Radiator	32-BC67M

SURGE TANK

DATED / NON-DATED CORVETTE SURGE TANKS

Our aluminum surge tanks are reproduced with the same tooling and dies that were used by Harrison during the production years. They are 100% correct in every detail and will pass the highest level judging. The early tanks (32-400 and 32-401) feature the "pressed in" tubes, which are actually welded in from the inside, just like they were from the factory. The later versions feature the tubes heli-arc welded. Each tank from the factory was date coded with the "year/month" format. The tanks are offered in both dated and non-dated service parts.



1961-1962 Corvette Surge Tank - Date Coded	32-400
1961-1962 Corvette Surge Tank - Non-Dated	32-420
1963-1964 Corvette Surge Tank - Date Coded	32-401
1963-1967 Corvette Surge Tank - Non-Dated	32-421
1965-1967 Corvette Surge Tank - Date Coded	32-402
1968-1972 Corvette Surge Tank - Date Coded	32-403
1968-1972 Corvette Surge Tank - Non-Dated	32-422

BB CORVETTE SURGE TANK

1969-72 BRASS

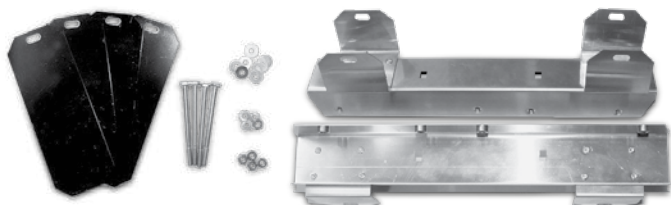
New reproduction brass/copper radiator expansion tank for 1969-72 big block engines with AC option only. Date tag and cap are sold separately. Shown in black for display only, tank is sold in raw copper.



Surge Tank	32-419
------------	---------------

1960-61 TANK BRACKETS

Side brackets for our 940 top tank aluminum radiator. This kit includes two mounting brackets, four die-cut rubber cushions, and mounting hardware.



1960-1961	32-440
-----------	---------------

MOUNTING STRAP

A new reproduction metal radiator mounting strap.



1955-1957	32-959
1958-1960	32-960



32-1139055M

1955-60 CORVETTE



This aluminum radiator is the ONLY true “Direct Fit®” radiator on the market. It features the correct “press formed” aluminum tanks and factory type side brackets. It doubles the cooling capacity and weighs only 12lbs.



32-6239055M

CORVETTE 1955-60 **LSX** MODIFIED

This radiator is a “custom package” for all 1955-60 Corvettes with LSX engines with manual or automatic transmissions. Inlet and outlet are on the passenger side, filler neck moved to the driver side. This radiator features factory type press formed end tanks, dual row core, and serpentine fins. This radiator will provide 40% more cooling over the stock copper radiator. Features single 16” SPAL high performance fan. It is epoxy free and will fit into the stock core support. Radiator comes with 2 rows of 1” tubes, SPAL fan, billet DeWitts™ cap, temp sensor in the radiator, steam line, relay, and wiring.

DeWitts™ Direct Fit® Pro-Series (2 Row 1" Tubes)

	Natural	Black Ice
Automatic	32-1139055A	32-1239055A
Manual	32-1139055M	32-1239055M
Fan Combo / Auto ('55-'57)		
Fan Combo / Man. ('55-'57)	32-4139055M	32-4239055M
Fan Combo / Auto ('58-'60)*	32-4139058A	32-4239058A
Fan Combo / Man. ('58-'60)*	32-4139058M	32-4239058M

DeWitts™ HP Series (2 Row 1.25" Tubes)

	Natural	Black Ice
	32-1149055A	32-1249055A
	32-1149055M	32-1249055M
	32-4149055A	32-4249055A
	32-4149055M	32-4249055M
	32-4149058A	32-4249058A
	32-4149058M	32-4249058M

DeWitts™ **LSX** Modified Pro-Series

LS Series Rad / Auto	32-3139055A	32-3239055A
LS Series Rad / Man.	32-3139055M	32-3239055M
LS Series Combo / Auto	32-6139055A	32-6239055A
LS Series Combo / Man.	32-6139055M	32-6239055M

DeWitts™ **LSX** HP Series

	32-3149055A	32-3249055A
	32-3149055M	32-3249055M
	32-6149055A	32-6249055A
	32-6149055M	32-6249055M

*Due to the fan motor size, there may be interference with the factory suspension on 1958-60 model Corvettes. This package should only be used on cars with alternator conversions.

Note: All HP Series use thicker lower tank, may interfere with sway bar and core support.





1961-62 CORVETTE



Features a double row (1.0" tubes) core and the same cast aluminum necks used on the original radiator. It will fit into the core support without any modifications and it offers 25% more cooling than replacement copper/brass radiators.



32-1139061M

CORVETTE 1961-62 LSX MODIFIED

This radiator is a "custom package" for all 1961-62 Corvettes with LSX engines with manual or automatic transmissions. Inlet and outlet are on the passenger side, filler neck, stem line, and temperature switch on passenger side. This radiator features formed end tanks, dual row core, and serpentine fins. This radiator will provide 40% more cooling over the stock copper radiator. Features single 16" SPAL high performance fan. It is epoxy free and will fit into the stock core support. Radiator comes with 2 rows of 1" tubes, SPAL fan, billet DeWitts™ cap, temp sensor in the radiator, steam line, relay, and wiring. This model has a filler neck on the radiator, which eliminates the stock Harrison overflow tank.



32-6239061M

DeWitts™ Direct Fit® Pro-Series (2 Row 1" Tubes)

DeWitts™ HP Series (2 Row 1.25" Tubes)

	Natural	Black Ice
Automatic	32-1139061A	32-1239061A
Manual	32-1139061M	32-1239061M
Fan Combo / Auto	32-4139061A	32-4239061A
Fan Combo / Man.	32-4139061M	32-4239061M

	Natural	Black Ice
	32-1149061A	32-1249061A
	32-1149061M	32-1249061M
	32-4149061A	32-4249061A
	32-4149061M	32-4249061M

DeWitts™ Modified Pro-Series

DeWitts™ LSX HP Series

LS Series Rad / Auto	32-3139061A	32-3239061A
LS Series Rad / Man.	32-3139061M	32-3239061M
LS Series Combo / Auto	32-6139061A	32-6239061A
LS Series Combo / Man.	32-6139061M	32-6239061M

	32-3149061A	32-3249061A
	32-3149061M	32-3249061M
	32-6149061A	32-6249061A
	32-6149061M	32-6249061M



32-1139063M

1963-72 CORVETTE



This double row aluminum radiator is offered as an alternate to the original plate type (941) radiator. While its BTU rating (4100) is slightly less than the original, it is still 25% better than the copper replacement radiators. The design uses many of the same original parts used in the factory design, including the inlet and outlet tank.

CORVETTE 1963-72 **LSX** MODIFIED



32-6239063M

This radiator is a “custom package” for all 1963-72 Corvettes with LSX engines with manual and automatic transmissions. This radiator is made to fit the original SB core support. The radiator features pin mounts on the bottom and a loop on the top middle of radiator. Inlet and outlet are on the passenger side, filler neck, stem line, and temperature switch on passenger side. This radiator features formed end tanks, dual row core, and serpentine fins. This radiator will provide 40% more cooling over the stock copper radiator. Features a single 16” SPAL high performance fan. It is epoxy free and will fit into the stock core support. Radiator comes with 2 rows of 1” tubes, SPAL fan, billet DeWitts™ cap, temp sensor in the radiator, steam line, relay, and wiring. This model has a filler neck on the radiator, which eliminates the stock Harrison overflow tank.

DeWitts™ Direct Fit® Pro-Series (2 Row 1" Tubes)

	Natural	Black Ice
Automatic	32-1139063A	32-1239063A
Manual	32-1139063M	32-1239063M
Fan Combo / Auto	32-4139063A	32-4239063A
Fan Combo / Man.	32-4139063M	32-4239063M

DeWitts™ HP Series (2 Row 1.25" Tubes)

	Natural	Black Ice
	32-1149063A	32-1249063A
	32-1149063M*	32-1249063M*
	32-4149063A	32-4249063A
	32-4149063M	32-4249063M

DeWitts™ **LSX** Modified Pro-Series

	DeWitts™	Modified Pro-Series
LS Series Rad / Auto	32-3139063A	32-3239063A
LS Series Rad / Man.	32-3139063M	32-3239063M
LS Series Combo / Auto	32-6139063A	32-6239063A
LS Series Combo / Man.	32-6139063M	32-6239063M

DeWitts™ **LSX** HP Series

	DeWitts™	HP Series
	32-3149063A	32-3249063A
	32-3149063M	32-3249063M
	32-6149063A	32-6249063A
	32-6149063M	32-6249063M

See SPAL category model SP004 for add-on fan kit on page 41.

*A great choice for cars with AC and modified motors.

Notes: this “pin mount” type radiator was used on all ‘63-’67 SB Corvettes. It was also used on ‘68-’72 SB base cars with no automatic transmission, AC, or optional engines.

CORVETTE 1963-72 SB **LSX** MODIFIED

This radiator is custom made to simplify a LSX series engine conversion on 1963-72 Corvettes. First, we moved the inlet and outlet to the passenger side. These connections are resized to match the ports on the LSX engine. Second, we added a filler neck for a direct mounted radiator cap, which eliminates the need for a separate surge tank. We even added a connection for the steam line. This radiator is designed to fit the original small block (pin mount) core support and it will eliminate the stock upper mounting bracket. This larger package will fill 100% of the core support opening with functioning core area while the end tanks are on each side behind the support. Pre-mounted to the radiator are SPAL dual 11" electric fans, providing 2720 CFM air flow. This will eliminate the factory fan and fan shroud. The fans will be controlled via a 195on/175off temperature switch, which we mount inside the end tank. Wiring harnesses, relays and wiring instructions are also included.



32-6239024M

1963-65 Corvette Small Block Support - pins on the bottom and bosses on front bolt to support instead of top middle bracket.				
DeWitts™ Direct Fit® Pro-Series (2 Row 1" Tubes)		DeWitts™ HP Series (2 Row 1.25" Tubes)		
	Natural	Black Ice	Natural	Black Ice
Fan Combo / Auto	32-4139024A	32-4239024A	32-4149024A	32-4249024A
Fan Combo / Man.	32-4139024M	32-4239024M	32-4149024M	32-4249024M
DeWitts™ LSX Modified Pro-Series		DeWitts™ LSX HP Series		
LS Series Combo / Auto	32-6139024A	32-6239024A	32-6149024A	32-6249024A
LS Series Combo / Man.	32-6139024M	32-6239024M	32-6149024M	32-6249024M

Note: The horn relay and voltage regulator must be relocated on 1963 models.

1966-67 Corvette Small Block Support - pins on the bottom and tabs on sides to bolt to support instead of top middle bracket.				
DeWitts™ Direct Fit® Pro-Series (2 Row 1" Tubes)		DeWitts™ HP Series (2 Row 1.25" Tubes)		
	Natural	Black Ice	Natural	Black Ice
Fan Combo / Auto	32-4139025A	32-4239025A	32-4149025A	32-4249025A
Fan Combo / Man.	32-4139025M	32-4239025M	32-4149025M	32-4249025M
DeWitts™ LSX Modified Pro-Series		DeWitts™ LSX HP Series		
LS Series Combo / Auto	32-6139025A	32-6239025A	32-6149025A	32-6249025A
LS Series Combo / Man.	32-6139025M	32-6239025M	32-6149025M	32-6249025M

1969-72 Corvette Small Block Support - pins on the bottom and tabs on sides to bolt to support instead of top middle bracket, base cars only.				
DeWitts™ Direct Fit® Pro-Series (2 Row 1" Tubes)		DeWitts™ HP Series (2 Row 1.25" Tubes)		
	Natural	Black Ice	Natural	Black Ice
Fan Combo / Auto	32-4139026A	32-4239026A	32-4149026A	32-4249026A
Fan Combo / Man.	32-4139026M	32-4239026M	32-4149026M	32-4249026M
DeWitts™ LSX Modified Pro-Series		DeWitts™ LSX HP Series		
LS Series Combo / Auto	32-6139026A	32-6239026A	32-6149026A	32-6249026A
LS Series Combo / Man.	32-6139026M	32-6239026M	32-6149026M	32-6249026M

Note: Model: 32-6139026M (Natural/Manual) is for 1969-72 small block base motor, no air, no auto. Used with the pin mount radiator core support and Harrison overflow tank. If your car has air, auto, and higher HP, use model 32-6139070M.



32-1139065M

1965 BIG BLOCK CORVETTE

Replacement aluminum radiator for 1965 big block engines. Also fits '67-'69 L88 cars.

	DeWitts™ Direct Fit® Pro-Series (2 Row 1" Tubes)		DeWitts™ HP Series (2 Row 1.25" Tubes)	
	Natural	Black Ice	Natural	Black Ice
Manual	32-1139065M	32-1239065M	32-1149065M	32-1249065M
Fan Combo / Man.	32-4139065M	32-4239065M	32-4149065M	32-4249065M



32-1139066M

1966-68 BIG BLOCK CORVETTE

(Also fits: '68 SB with Auto or AC)



DeWitts™ manufactures a high performance two row aluminum radiator that is a "Direct Fit®" for all '66-'68 big block Corvettes. **This model also fits 1968 small block engines that were equipped with automatic trans or AC.** This radiator will provide 25% more cooling than the stock four row copper radiator. It features the same size and configuration inlet and outlet, factory type channels, and press formed end tanks. No modifications are required. Models 32-1139066M & 32-1139066A are our standard design core with two 1" tubes and serpentine fins at 15 FPI.



32-6239066M

CORVETTE 1966-68 BB LSX MODIFIED

This radiator is a "custom package" for all 1966-68 BB Corvettes with LSX engines. Inlet and outlet are on the passenger side. This radiator features factory type press formed end tanks, dual row core, and serpentine fins. This radiator will provide 30% more cooling than the stock copper unit and half the weight. Features dual 11" SPAL fans with 2720 CFM. It is epoxy free and will fit into the stock core support. Radiator comes with 2 rows of 1" tubes, SPAL fan, billet DeWitts™ cap, temp sensor in the radiator, steam line, relay, and wiring.

	DeWitts™ Direct Fit® Pro-Series (2 Row 1" Tubes)		DeWitts™ HP Series (2 Row 1.25" Tubes)	
	Natural	Black Ice	Natural	Black Ice
Automatic	32-1139066A	32-1239066A	32-1149066A	32-1249066A
Manual	32-1139066M	32-1239066M	32-1149066M	32-1249066M
Fan Combo / Auto	32-4139066A	32-4239066A	32-4149066A	32-4249066A
Fan Combo / Man.	32-4139066M	32-4239066M	32-4149066M	32-4249066M

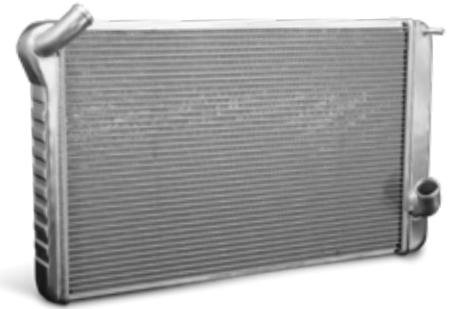
	DeWitts™ LSX Modified Pro-Series		DeWitts™ LSX HP Series	
	Natural	Black Ice	Natural	Black Ice
LS Series Rad / Auto	32-3139066A	32-3239066A	32-3149066A	32-3249066A
LS Series Rad / Man.	32-3139066M	32-3239066M	32-3149066M	32-3249066M
LS Series Combo / Auto	32-6139066A	32-6239066A	32-6149066A	32-6249066A
LS Series Combo / Man.	32-6139066M	32-6239066M	32-6149066M	32-6249066M

See SPAL category model SP006 for add-on fan kit on page 41.

1969-72 BIG BLOCK CORVETTE



This is a true "Direct Fit®" aluminum radiator for 1969-72 big block engine Corvettes. Unlike other "universal" aftermarket radiators, this model features the correct 27.5" core, factory type upper channels, stock hose connections, and press formed tanks. It is also epoxy free. No cutting or modifying is required. This radiator features two rows of one-inch-wide tubes and will provide 30% more cooling than an equal size four row copper radiator.



32-1139069M

CORVETTE 1969-72 BB ALL **LSX** MODIFIED

This radiator is a "custom package" for all 1969-72 BB Corvettes with manual or automatic transmissions. Inlet and outlet are on the passenger side. This radiator features factory type press formed end tanks, dual row core, and serpentine fins. This radiator will provide 30% more cooling than the stock copper unit and half the weight. Features dual 11" SPAL fans with 2720 CFM. It is epoxy free and will fit into the stock core support. Radiator comes with 2 rows of 1" tubes, SPAL fan, billet DeWitts™ cap, temp sensor in the radiator, steam line, relay, and wiring.



32-6239073A

DeWitts™ Direct Fit® Pro-Series (2 Row 1" Tubes)

	Natural	Black Ice
Automatic	32-1139069A	32-1239069A
Manual	32-1139069M	32-1239069M
Fan Combo / Auto	32-4139069A	32-4239069A
Fan Combo / Man.	32-4139069M	32-4239069M

DeWitts™ HP Series (2 Row 1.25" Tubes)

	Natural	Black Ice
	32-1149069A	32-1249069A
	32-1149069M	32-1249069M
	32-4149069A	32-4249069A
	32-4149069M	32-4249069M

DeWitts™ **LSX** Modified Pro-Series

LS Series Rad / Auto	32-3139073A	32-3239073A
LS Series Rad / Man.	32-3139073M	32-3239073M
LS Series Combo / Auto	32-6139073A	32-6239073A
LS Series Combo / Man.	32-6139073M	32-6239073M

DeWitts™ **LSX** HP Series

	32-3149073A	32-3249073A
	32-3149073M	32-3249073M
	32-6149073A	32-6249073A
	32-6149073M	32-6249073M



32-1139070A

1969-72 SMALL BLOCK CORVETTE



This radiator is for all 1969-72 350 small block Corvettes with automatic transmission or AC. This "Direct Fit®" aluminum radiator features factory type press formed end tanks, dual row core, serpentine fins, and the factory type upper and lower channels. This radiator will provide 30% more cooling than the stock copper unit with half the weight and is epoxy free. It will fit into the stock core support and uses the original factory hoses. Absolutely no modifications are required. **(Also fits LT1 & L46 option cars.)**



32-6239070A

CORVETTE 1969-72 **LSX** MODIFIED

This is a custom LSX engine conversion radiator for all 1969-72 Corvettes with 26" core support and manual transmission. Inlet and outlet are on the passenger side and sized to match the LSX engine. This radiator features factory type press formed end tanks, dual row core, and serpentine fins. This radiator will provide 30% more cooling than the stock copper unit and half the weight. It is also epoxy free.

DeWitts™ Direct Fit® Pro-Series (2 Row 1" Tubes)

	Natural	Black Ice
Automatic	32-1139070A	32-1239070A
Manual	32-1139070M	32-1239070M
Fan Combo / Auto	32-4139070A	32-4239070A
Fan Combo / Man.	32-4139070M	32-4239070M

DeWitts™ HP Series (2 Row 1.25" Tubes)

	Natural	Black Ice
Automatic	32-1149070A	32-1249070A
Manual	32-1149070M	32-1249070M
Fan Combo / Auto	32-4149070A	32-4249070A
Fan Combo / Man.	32-4149070M	32-4249070M

DeWitts™ **LSX** Modified Pro-Series

LS Series Rad / Auto	32-3139070A	32-3239070A
LS Series Rad / Man.	32-3139070M	32-3239070M
LS Series Combo / Auto	32-6139070A	32-6239070A
LS Series Combo / Man.	32-6139070M	32-6239070M

DeWitts™ **LSX** HP Series

Automatic	32-3149070A	32-3249070A
Manual	32-3149070M	32-3249070M
Fan Combo / Auto	32-6149070A	32-6249070A
Fan Combo / Man.	32-6149070M	32-6249070M

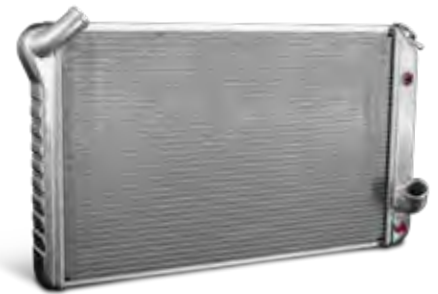




1973-76 CORVETTE



This "Direct Fit™" aluminum radiator features factory type press formed end tanks, dual row core, serpentine fins, and the factory type upper and lower channels. This radiator will provide 30% more cooling than the stock copper unit with half the weight and is epoxy free. It will fit into the stock core support and uses the original factory hoses. Note: Late 1976 cars may require the 1977 style radiator. Call for recommendation.



32-1139073A

CORVETTE 1973-76 BB ALL **LSX** MODIFIED

This radiator is a "custom package" for all 1973-76 BB Corvettes with manual or automatic transmissions. Inlet and outlet are on the passenger side. This radiator features factory type press formed end tanks, dual row core, and serpentine fins. This radiator will provide 30% more cooling than the stock copper unit and half the weight. Features dual 11" SPAL fans with 2720 CFM. It is epoxy free and will fit into the stock core support. Radiator comes with 2 rows of 1" tubes, SPAL fan, billet DeWitts™ cap, temp sensor in the radiator, steam line, relay, and wiring.



32-6239073A

DeWitts™ Direct Fit® Pro-Series (2 Row 1" Tubes)

	Natural	Black Ice
Automatic	32-1139073A	32-1239073A
Manual	32-1139073M	32-1239073M
Fan Combo / Auto	32-4139073A	32-4239073A
Fan Combo / Man.	32-4139073M	32-4239073M

DeWitts™ HP Series (2 Row 1.25" Tubes)

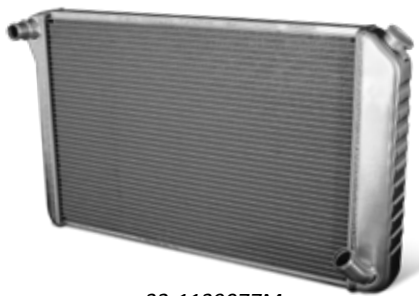
	Natural	Black Ice
	32-1149073A	32-1249073A
	32-1149073M	32-1249073M
	32-4149073A	32-4249073A
	32-4149073M	32-4249073M

DeWitts™ **LSX** Modified Pro-Series

LS Series Rad / Auto	32-3139073A	32-3239073A
LS Series Rad / Man.	32-3139073M	32-3239073M
LS Series Combo / Auto	32-6139073A	32-6239073A
LS Series Combo / Man.	32-6139073M	32-6239073M

DeWitts™ **LSX** HP Series

	32-3149073A	32-3249073A
	32-3149073M	32-3249073M
	32-6149073A	32-6249073A
	32-6149073M	32-6249073M



32-1139077M

1977-82 CORVETTE



This "Direct Fit[®]" aluminum radiator features factory type press formed end tanks, dual row core, serpentine fins, and the factory type upper and lower channels. This radiator will provide 30% more cooling than the stock copper unit with half the weight and is epoxy free. It will fit into the stock core support and uses the original factory hoses. Heavy duty rubber cushions are included. Fits all '77-'82 Corvettes with automatic and manual transmissions.



32-6239077A

CORVETTE 1977-82 **LSX** MODIFIED

This radiator is a "custom package" for all 1977-82 Corvette LSX models with manual or automatic transmissions. Inlet and outlet are on the passenger side. This radiator features factory type press formed end tanks, dual row core, and serpentine fins. This radiator will provide 30% more cooling than the stock copper unit and half the weight. Features dual 11" SPAL fans with 2720 CFM. It is epoxy free and will fit into the stock core support. Radiator comes with 2 rows of 1" tubes, SPAL fan, billet DeWitts[™] cap, temp sensor in the radiator, steam line, relay, and wiring.

DeWitts[™] Direct Fit[®] Pro-Series (2 Row 1" Tubes)

	Natural	Black Ice
Automatic	32-1139077A	32-1239077A
Manual	32-1139077M	32-1239077M
Fan Combo / Auto	32-4139077A	32-4239077A
Fan Combo / Man.	32-4139077M	32-4239077M

DeWitts[™] HP Series (2 Row 1.25" Tubes)

	Natural	Black Ice
	32-1149077A	32-1249077A
	32-1149077M	32-1249077M
	32-4149077A	32-4249077A
	32-4149077M	32-4249077M

DeWitts[™] **LSX** Modified Pro-Series

LS Series Rad / Auto	32-3139077A	32-3239077A
LS Series Rad / Man.	32-3139077M	32-3239077M
LS Series Combo / Auto	32-6139077A	32-6239077A
LS Series Combo / Man.	32-6139077M	32-6239077M

DeWitts[™] **LSX** HP Series

	32-3149077A	32-3249077A
	32-3149077M	32-3249077M
	32-6149077A	32-6249077A
	32-6149077M	32-6249077M

1984-89 CORVETTE



Features two rows of 1" tubes and press formed end tanks. This doubles the cooling capacity of the original single row units. This design eliminates failures due to cracked plastic end tanks and/or gasket leaks. This model fits both automatic transmission and 4 + 3 models. To simplify installation, custom mounting cushions are included. Note: 1984 & 1985 cars will require newer-style AC condenser.



32-1139084A

Double Row Radiator / Automatic

32-1139084A

The single row radiator features 1-1/2" tubes. This design increases cooling surfaces by 50% over the stock unit. This unit uses the same full size aluminum end tanks from our double row, increasing fluid capacity.

Single Row Radiator / Automatic

32-1129084A

1984-89 CORVETTE FAN KIT



Now you can upgrade the factory 1700 CFM with this high performance (1918 CFM) fan. Fan comes with a "Direct Fit" adapter plate, ready to bolt on and no cutting or splicing of wires is needed. We supply this fan with a harness-matching plug.



32-SP464





32-1139090A

1990-96 CORVETTE



Features two rows of 1" tubes and press formed end tanks. This doubles the cooling capacity of the original single row units. This unit fits into the original mounting, however, GM did not allow any room for a thicker core and therefore it is impossible to make a true "Direct Fit®". The upper two rubber cushions must be trimmed slightly to accommodate the larger core. We include spacer plates and hardware so no shroud cutting is required.

DeWitts™ Direct Fit® Pro-Series (2 Row 1" Tubes) / Automatic	32-1139090A
DeWitts™ Direct Fit® Pro-Series (2 Row 1" Tubes) / Manual	32-1139090M
DeWitts™ Direct Fit® Pro-Series (2 Row 1" Tubes) / Optional Oil Cooler	32-4139090E
+ Black Ice Coating / Automatic	32-1239090A
+ Dual SPAL Fan / Automatic	32-3139090A
+ Dual SPAL Fan / Manual	32-3139090M
DeWitts™ HP Series (2 Row 1.25" Tubes) / Automatic	32-1149090A

Note: all 1990-1996 fan upgrades are listed in SPAL fan section #32-SP461 dual fan upgrade. These fan kits mount to factory shroud for a direct fit.

The single row radiator features 1.5" tubes. This design increases cooling surfaces by 50% over the stock unit. This unit uses the same full size aluminum end tanks from our double row, increasing fluid capacity.

DeWitts™ Direct Fit® Single Row 1.5" Core Radiator

	Natural	Black Ice
Automatic	32-1129090A	32-1229090A
Manual	32-1129090M	32-1229090M



32-SP461

1990-96 CORVETTE FAN KIT



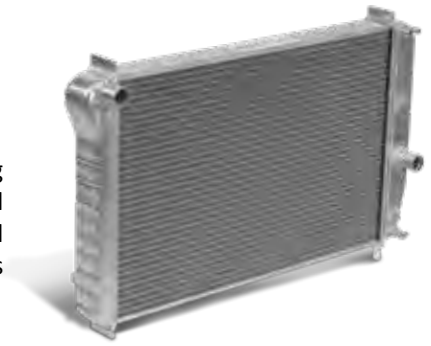
Replace the factory fans with this 11" high performance SPAL puller fan. DeWitts™ has designed custom brackets for both factory single row cores and DeWitts™ "Direct Fit®" double row radiators. The evaporator mounting bracket must be modified, as this fan provides no supporting system.

DeWitts™ 2-Row Core	32-SP461
GM Single Row Core	32-SP462

C5 ALUMINUM RADIATOR



This high performance “Direct Fit®” aluminum radiator features two rows of 1” cooling tubes, doubling the cooling capacity of the factory single row. The press formed aluminum end tanks are TIG-welded to the core, eliminating failures due to cracked plastic end tanks and/or gasket leaks. This unit fits into the original mounting and has all the factory connections.



	1997-2004 Manual Transmission Radiator	32-1139097M
	1997-2000 Automatic Transmission Radiator	32-1139097A
	1997-2000 EOC / TOC Radiator	32-1139097B
	2001-2004 Automatic Transmission Radiator	32-1139101A
	2001-2004 EOC / TOC Radiator	32-1139101B
	EOC Radiator (Left Side Engine Oil Cooler)	32-1139097E
SHORT	1997-2004 Manual Transmission Radiator (See Note)	32-1139197M
SHORT	1997-2000 Automatic Transmission Radiator (See Note)	32-1139197A
SHORT	1997-2000 EOC / TOC Radiator (See Note)	32-1139197B
SHORT	EOC Radiator (Left Side Engine Oil Cooler) (See Note)	32-1139197E
SHORT	2001-2004 TOC Radiator (See Note)	32-1139111A
SHORT	2001-2004 EOC / TOC Radiator (See Note)	32-1139111B

Note: DeWitts™ offers custom “short” models to provide extra clearance to make room for supercharger packages.

C6 ALUMINUM RADIATOR



This “Direct Fit®” radiator features two rows of 1” tubes, which doubles the cooling capacity of a factory single row. Our exclusive “press formed” end tanks are hand TIG-welded by expert craftsman, eliminating the factory plastic tanks.



	Radiator With Dual Cooler (EOC & TOC)	32-1139105B
	No Cooler / NON-Z51 / Manual Transmission Only	32-1139105M
	Driver Side Oil Cooler (EOC) Radiator	32-1139105E
	Passenger Side Cooler (Automatics And All Z06 Options)	32-1139105A
	2009-2013 ZR1 Radiator	32-1139109Z
	2013 Z06, Z51, Grand Sport With Engine-mounted Oil Cooler	32-1139105Z
	2013 Corvette Combo Version With Engine-mounted Oil Cooler	32-4139105Z
SHORT	EOC & TOC Radiator	32-1139125B
SHORT	No Cooler / NON-Z51 / Manual Transmission Only (See Note)	32-1139125M
SHORT	EOC Radiator (See Note)	32-1139125E
SHORT	2005-2013 Z06/C6 Automatic Transmission Radiator (See Note)	32-1139125A
SHORT	2013 Z06, Z51, Grand Sport With Engine-mounted Oil Cooler	32-1139125Z
SHORT	2013 Corvette Combo Version With Engine-mounted Oil Cooler	32-4139125Z

Note: DeWitts™ offers custom “short” models to provide extra clearance to make room for supercharger packages.



C7 Z06 ALUMINUM RADIATOR



Upgrade your cooling system with our new 57mm double row aluminum radiator for all C7 Corvettes. This new "Direct Fit®" radiator features serpentine fins and special dimpled cooling tubes. These dimples create turbulence as coolant passes through the tube. Turbulent flow is a proven method to increase heat transfer over the standard laminar flow method. The thicker core increases tube-to-fin surface area and the all-aluminum construction eliminates plastic end tanks and gasket failures. The larger capacity end tanks hold one additional gallon of coolant to help dissipate heat.

All C7 & Z06 Direct Fit®

32-1139114M

C7 Race Radiator Modification Required (See Note)

32-1149114M

Note: DeWitts™ now offers our HP Model (32-1149114M) 70mm double row aluminum radiator for extreme racing conditions. This radiator requires trimming both the hood duct and electric fan shroud for proper clearance.



C7 19" ELECTRIC FAN UPGRADE **NEW!**

Our new 19" brushless fan is simple to install and features "plug and play" wiring. No re-programming or splicing is required. This fan replaces the stock 14" 600 watt fan with an impressive 835 watt fan motor for more CFM when you need it. The custom aluminum shroud now covers 100% of the core face, utilizing all the radiator area, and it looks incredible when showing off the engine bay! The stock hood duct is eliminated for clearance.

Fits All (Except 70mm radiator)

32-SP477

Fits DeWitts™ 70mm radiator

32-SP478

*Note: Image shows fan upgrade on DeWitts™ radiator. **Radiator sold separately.***



C7 Z06 AIR INTAKE HEAT EXCHANGER

Reduce intake temperatures with this efficient heat exchanger. The system holds more fluid in the heat exchanger with increased tube-to-fin contact area. This allows the supercharger to be more efficient while in boost and cool down faster after high boost runs.



Heat Exchanger

32-9139007M

Note: Removal of the front bumper and a car lift is required. DeWitts™ recommends contracting a professional service technician for installation.

C7 TRANS/COOLANT COMBO COOLER

Maximize your cooling system and reduce faults by installing our new exclusive combo cooler. The factory location of the automatic transmission cooler has untapped potential for A8 Corvettes. DeWitts™ new combination cooler is custom designed to fit under the front fascia and mount in the same area as the automatic transmission cooler. By trimming a small portion of the radiator shroud we are able to fit a taller unit in this location and use the original mounting hardware. This package features a cooling section for A8 transmission fluid and a second section for engine coolant. This is a complete kit, that includes Direct Fit® aluminum lines for the transmission connections and 5/8" heater hoses.



C7 Trans/Coolant (A8 Models)

32-TC

C7 AUXILIARY RADIATOR

This new kit is for the manual transmission M7 models only. A secondary radiator under the front fascia will provide additional cooling for high performance applications without coolant faults. This radiator will require minor trimming to the interior duct and the lower deflector. Cutting instructions are included.



C7 Auxiliary Radiator (M7 Models) **32-C7AUX**

C7 Z06 ENGINE OIL COOLING KIT

This "Air-to-Oil" type EOC kit is for all C7 Corvettes. This kit includes a custom two pass oil cooler that is designed to mount directly behind the grill opening. This kit replaces the factory Water-to-Oil cooler with a custom adapter and stainless steel braided oil lines. Detailed installation instructions are included.



(EOC) Kit

32-8119001E



32-1139022M

1967-69 BIG BLOCK CAMARO



This is a true “Direct Fit®” aluminum radiator for 1967-69 Camaros with big block engines. Unlike other “universal” aftermarket radiators, this model features the factory type upper channels, stock hose connections, and press formed tanks. It is also epoxy free. No cutting or modifying is required. This radiator features two rows of 1” wide tubes and will provide 30% more cooling than an equal size four row copper radiator.



32-6139022M

CAMARO 1967-69 BB **LSX** MODIFIED

This radiator is a “custom package” for all 1967-69 Camaros with LSX engines with manual or automatic transmissions. Inlet and outlet are on the passenger side. This radiator features factory type press formed end tanks, dual row core, and serpentine fins. This radiator will provide 30% more cooling than the stock copper unit and half the weight. Features dual 11” SPAL fans with 2720 CFM. It is epoxy free and will fit into the stock core support. Radiator comes with 2 rows of 1” tubes, dual fans, billet DeWitts™ cap, temp sensor in the radiator, steam line, relays, and wiring.

DeWitts™ Direct Fit® Pro-Series (2 Row 1" Tubes)	
Natural	Black Ice

DeWitts™ HP Series (2 Row 1.25" Tubes)	
Natural	Black Ice

Automatic	32-1139022A	32-1239022A
Manual	32-1139022M	32-1239022M
Fan Combo / Auto	32-4139022A	32-4239022A
Fan Combo / Man.	32-4139022M	32-4239022M

32-1149022A	32-1249022A
32-1149022M	32-1249022M
32-4149022A	32-4249022A
32-4149022M	32-4249022M

DeWitts™ LSX Modified Pro-Series	
---	--

DeWitts™ LSX HP Series	
-------------------------------	--

LS Series Rad / Auto	32-3139022A	32-3239022A
LS Series Rad / Man.	32-3139022M	32-3239022M
LS Series Combo / Auto	32-6139022A	32-6239022A
LS Series Combo / Man.	32-6139022M	32-6239022M

32-3149022A	32-3249022A
32-3149022M	32-3249022M
32-6149022A	32-6249022A
32-6149022M	32-6249022M

Special 1969 COPO Radiator	32-1139023M	32-1239023M
----------------------------	-----------------------------	-----------------------------



32-1139004M

1967-69 SMALL BLOCK / Z28 CAMARO

This is a true “Direct Fit®” aluminum radiator for 1967-69 Camaros. Unlike other “universal” aftermarket radiators, this model features the factory type upper channels, stock hose connections, and press formed tanks. It is also epoxy free. No cutting or modifying is required. This radiator features two rows of 1” wide tubes and will provide 30% more cooling than an equal size four row copper radiator.

DeWitts™ Direct Fit® Pro-Series (2 Row 1" Tubes)	
Natural	Black Ice

DeWitts™ HP Series (2 Row 1.25" Tubes)	
Natural	Black Ice

Automatic	32-1139004A	32-1239004A
Manual	32-1139004M	32-1239004M
Fan Combo / Auto	32-4139004A	32-4239004A
Fan Combo / Man.	32-4139004M	32-4239004M

32-1149004A	32-1249004A
32-1149004M	32-1249004M
32-4149004A	32-4249004A
32-4149004M	32-4249004M

1970-81 CAMARO



This is a true “Direct Fit®” aluminum radiator for 1970-81 Camaros. Unlike other “universal” aftermarket radiators, this model features the factory type upper channels, stock hose connections, and press formed tanks. It is also epoxy free. No cutting or modifying is required. This radiator features two rows of 1” wide tubes and will provide 30% more cooling than an equal size four row copper radiator.



32-1139005M

CAMARO 1970-81 ALL **LSX** MODIFIED

This radiator is a “custom package” for all 1970-81 Camaros with LSX engines with manual or automatic transmissions. Inlet and outlet are on the passenger side. This radiator features factory type press formed end tanks, dual row core, and serpentine fins. This radiator will provide 30% more cooling than the stock copper unit and half the weight. Features dual 11” SPAL fans with 2720 CFM. It is epoxy free and will fit into the stock core support. Radiator comes with 2 rows of 1” tubes, dual fans, billet DeWitts™ cap, temp sensor in the radiator, steam line, relays, and wiring.



32-6239005M

DeWitts™ Direct Fit® Pro-Series (2 Row 1" Tubes)

	Natural	Black Ice
Automatic	32-1139005A	32-1239005A
Manual	32-1139005M	32-1239005M
Fan Combo / Auto	32-4139005A	32-4239005A
Fan Combo / Man.	32-4139005M	32-4239005M

DeWitts™ HP Series (2 Row 1.25" Tubes)

	Natural	Black Ice
Automatic	32-1149005A	32-1249005A
Manual	32-1149005M	32-1249005M
Fan Combo / Auto	32-4149005A	32-4249005A
Fan Combo / Man.	32-4149005M	32-4249005M

DeWitts™ LSX Modified Pro-Series

LS Series Rad / Auto	32-3139005A	32-3239005A
LS Series Rad / Man.	32-3139005M	32-3239005M
LS Series Combo / Auto	32-6139005A	32-6239005A
LS Series Combo / Man.	32-6139005M	32-6239005M

DeWitts™ LSX HP Series

Automatic	32-3149005A	32-3249005A
Manual	32-3149005M	32-3249005M
Fan Combo / Auto	32-6149005A	32-6249005A
Fan Combo / Man.	32-6149005M	32-6249005M

1982-92 CAMARO

This high performance “Direct Fit®” aluminum radiator features two rows of 1” cooling tubes, doubling the cooling capacity of the factory single row. The press formed aluminum end tanks are TIG-welded to the core, eliminating failures due to cracked plastic end tanks and/or gasket leaks. This unit fits into the original mounting and has all the factory connections and an automatic transmission cooler with factory flare connections.



32-1139006M

DeWitts™ Direct Fit® Pro-Series (2 Row 1" Tubes)

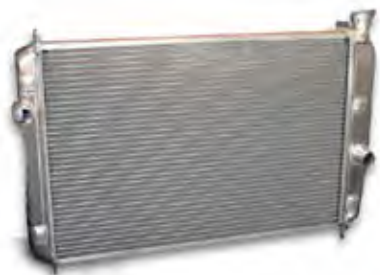
	Natural	Black Ice
Automatic	32-1139006A	32-1239006A
Manual	32-1139006M	32-1239006M

DeWitts™ HP Series (2 Row 1.25" Tubes)

	Natural	Black Ice
Automatic	32-1149006A	32-1249006A
Manual	32-1149006M	32-1249006M

DeWitts™ LSX Modified Pro-Series

LS Series Rad / Auto	32-3139006A	32-3239006A
LS Series Rad / Man.	32-3139006M	32-3239006M
LS Series Combo / Auto	32-6139006A	32-6239006A
LS Series Combo / Man.	32-6139006M	32-6239006M



32-1139007M

1993-02 CAMARO HIGH PERFORMANCE

This high performance "Direct Fit" aluminum radiator features two rows of 1" cooling tubes, doubling the cooling capacity of the factory single row. The press formed aluminum end tanks are TIG-welded to the core, eliminating failures due to cracked plastic end tanks and/or gasket leaks. This unit fits into the original mounting and has all the factory connections and an automatic transmission cooler with factory flare connections.

DeWitts™ Direct Fit® Pro-Series (2 Row 1" Tubes)

	Natural	Black Ice
Automatic (93-97 LT1 No Coolant Sensor)	32-1139007A	32-1239007A
Manual (93-97 LT1 No Coolant Sensor)	32-1139007M	32-1239007M
Automatic (98-02 LS1 With Low Coolant Sensor)	32-1139027A	32-1239027A
Manual (98-02 LS1 With Low Coolant Sensor)	32-1139027M	32-1239027M

DeWitts™ HP Series (2 Row 1.25" Tubes)

	Natural	Black Ice
	32-1149007A	32-1249007A
	32-1149007M	32-1249007M
	32-1149027A	32-1249027A
	32-1149027M	32-1249027M

Automatic (93-97 LT1 No Coolant Sensor)

32-1139007A

32-1239007A

32-1149007A

32-1249007A

Manual (93-97 LT1 No Coolant Sensor)

32-1139007M

32-1239007M

32-1149007M

32-1249007M

Automatic (98-02 LS1 With Low Coolant Sensor)

32-1139027A

32-1239027A

32-1149027A

32-1249027A

Manual (98-02 LS1 With Low Coolant Sensor)

32-1139027M

32-1239027M

32-1149027M

32-1249027M



C5 CORVETTE FAN UPGRADE

We completely redesigned our C5 fan package to utilize a laser-cut aluminum shroud. The shroud incorporates four rubber flapper valves to improve air flow at high speeds and close at slower speeds. Two SPAL 12" high performance fans provide 3260 CFM, which doubles the factory output. DeWitts™ customized the fans with matching Corvette fan plugs, so no cutting or splicing is required.

All Standard height C5 models

32-SP015



32-1139009M

2010-15 CAMARO HIGH PERFORMANCE

This high performance "Direct Fit" aluminum radiator features two rows of 1" cooling tubes, doubling the cooling capacity of the factory single row. The formed aluminum end tanks are TIG-welded to the core, eliminating failures due to cracked plastic end tanks and/or gasket leaks. This unit fits into the original mounting. The factory connections, automatic transmission cooler with factory flare, stock fan shroud mounting and condenser are all in place for easy installation. Fits all 2010-2015 Camaros.

DeWitts™ Direct Fit® Pro-Series (2 Row 1" Tubes)

Natural
Automatic (2010-2011 Camaro All Models)
Automatic (2012-2015 Camaro All Except Z28)
Automatic (2014-2015 Z28 Model Coming Soon!)

DeWitts™ HP Series (2 Row 1.25" Tubes)

Natural

Automatic (2010-2011 Camaro All Models)

32-1139008A

32-1149008A

Automatic (2012-2015 Camaro All Except Z28)

32-1139009A

32-1149009A

Automatic (2014-2015 Z28 Model Coming Soon!)

Call For More Info

Call For More Info

2017 CAMARO ZL1 HIGH PERFORMANCE

This high performance “Direct Fit®” aluminum radiator features two rows of 1” cooling tubes, doubling the cooling capacity of the factory single row. The formed aluminum end tanks are TIG-welded to the core, eliminating failures due to cracked plastic end tanks and/or gasket leaks. This unit fits into the original mounts. The factory connections, automatic transmission cooler with factory flare, stock fan shroud mounting and condenser are all in place for easy installation. Fits automatic 2017 ZL1 Camaros.



32-1139045A

Two Row Radiator / Automatic

1964-65 CHEVELLE

This radiator is a “Direct Fit®” for all 1964-65 Chevelles with small block engines and automatic or manual transmissions. Inlet and outlet are on the passenger side. This radiator features factory type press formed end tanks, dual row core, and serpentine fins. This radiator will provide 30% more cooling than the stock copper unit and half the weight. It is also epoxy free. It will fit into the stock core support and uses the original factory hoses.



32-1139001A

CHEVELLE 1964-65 ALL **LSX** MODIFIED

This radiator is a “custom package” for all 1964-65 Chevelles with LSX engines with manual or automatic transmissions. Inlet and outlet are on the passenger side. This radiator features factory type press formed end tanks, dual row core, and serpentine fins. This radiator will provide 30% more cooling than the stock copper unit and half the weight. Features dual 12” Flex-A-Lite fans for a low-profile clearance, great for serpentine belts systems. It is epoxy free and will fit into the stock core support. Radiator comes with 2 rows of 1” tubes, dual fans, billet DeWitts™ cap, temp sensor in the radiator, steam line, relays, and wiring.



32-6239002M

DeWitts™ Direct Fit® Pro-Series (2 Row 1" Tubes)

DeWitts™ HP Series (2 Row 1.25" Tubes)

	Natural	Black Ice
Automatic	32-1139001A	32-1239001A
Manual	32-1139001M	32-1239001M
Fan Combo / Auto	32-4139001A	32-4239001A
Fan Combo / Man.	32-4139001M	32-4239001M

	Natural	Black Ice
	32-1149001A	32-1249001A
	32-1149001M	32-1249001M
	32-4149001A	32-4249001A
	32-4149001M	32-4249001M

DeWitts™ **LSX** Modified Pro-Series

DeWitts™ **LSX** HP Series

LS Series Rad / Auto	32-3139002A	32-3239002A
LS Series Rad / Man.	32-3139002M	32-3239002M
LS Series Combo / Auto	32-6139002A	32-6239002A
LS Series Combo / Man.	32-6139002M	32-6239002M

	32-3149002A	32-3249002A
	32-3149002M	32-3249002M
	32-6149002A	32-6249002A
	32-6149002M	32-6249002M



32-1139002M

1966-67 CHEVELLE



This radiator is a “Direct Fit®” for all 1966-67 “A” body Chevelles with BB engines and automatic or manual transmissions. Also fits SB Chevelles with AC. Features included are factory type press formed end tanks, dual row core, and serpentine fins. This radiator will provide 30% more cooling than the stock copper unit, with half the weight. It is also epoxy free. It will fit into the stock core support and it uses the original factory hoses.



32-6239002M

CHEVELLE 1966-67 ALL **LSX** MODIFIED

This radiator is a “custom package” for all 1966-67 Chevelles with LSX engines with manual or automatic transmissions. Inlet and outlet are on the passenger side. This radiator features factory type press formed end tanks, dual row core, and serpentine fins. This radiator will provide 30% more cooling than the stock copper unit and half the weight. Features dual 12” Flex-A-Lite fans for a low-profile clearance, great for serpentine belts systems. It is epoxy free and will fit into the stock core support. Radiator comes with 2 rows of 1” tubes, dual fans, billet DeWitts™ cap, temp sensor in the radiator, steam line, relays, and wiring.

DeWitts™ Direct Fit® Pro-Series (2 Row 1" Tubes)

	Natural	Black Ice
Automatic	32-1139002A	32-1239002A
Manual	32-1139002M	32-1239002M
Fan Combo / Auto	32-4139002A	32-4239002A
Fan Combo / Man.	32-4139002M	32-4239002M

DeWitts™ HP Series (2 Row 1.25" Tubes)

	Natural	Black Ice
	32-1149002A	32-1249002A
	32-1149002M	32-1249002M
	32-4149002A	32-4249002A
	32-4149002M	32-4249002M

DeWitts™ **LSX** Modified Pro-Series

LS Series Rad / Auto	32-3139002A	32-3239002A
LS Series Rad / Man.	32-3139002M	32-3239002M
LS Series Combo / Auto	32-6139002A	32-6239002A
LS Series Combo / Man.	32-6139002M	32-6239002M

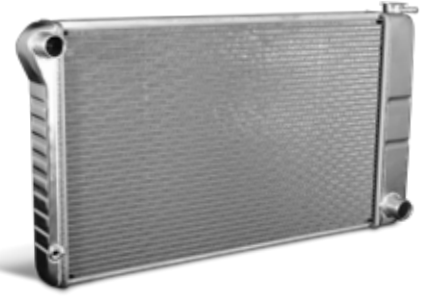
DeWitts™ **LSX** HP Series

	32-3149002A	32-3249002A
	32-3149002M	32-3249002M
	32-6149002A	32-6249002A
	32-6149002M	32-6249002M

1968-72 CHEVELLE



This radiator is a “Direct Fit®” for all 1968-72 BB and manual or automatic transmissions. Also fits SB Chevilles with AC. This radiator features factory type press formed end tanks, dual row core, serpentine fins, and the factory type upper and lower channels. This radiator will provide 30% more cooling than the stock copper unit and half the weight. It is also epoxy free. It will fit into the stock core support and it uses the original factory hoses. (Features an internal transmission cooler for automatics.)



32-1139003M

CHEVELLE 1968-72 ALL **LSX** MODIFIED

This radiator is a “custom package” for all 1968-72 Chevilles with LSX engines with manual transmission. Inlet and outlet are on the passenger side. This radiator features factory type press formed end tanks, dual row core, and serpentine fins. This radiator will provide 30% more cooling than the stock copper unit and half the weight. Features dual 11" SPAL fans with 2720 CFM. It is epoxy free and will fit into the stock core support. Radiator comes with 2 rows of 1" tubes, dual fans, billet DeWitts™ cap, temp sensor in the radiator, steam line, relays, and wiring.



32-6239003M

DeWitts™ Direct Fit® Pro-Series (2 Row 1" Tubes)

	Natural	Black Ice
Automatic	32-1139003A	32-1239003A
Manual	32-1139003M	32-1239003M
Fan Combo / Auto	32-4139003A	32-4239003A
Fan Combo / Man.	32-4139003M	32-4239003M

DeWitts™ HP Series (2 Row 1.25" Tubes)

	Natural	Black Ice
	32-1149003A	32-1249003A
	32-1149003M	32-1249003M
	32-4149003A	32-4249003A
	32-4149003M	32-4249003M

DeWitts™ **LSX** Modified Pro-Series

LS Series Rad / Auto	32-3139003A	32-3239003A
LS Series Rad / Man.	32-3139003M	32-3239003M
LS Series Combo / Auto	32-6139003A	32-6239003A
LS Series Combo / Man.	32-6139003M	32-6239003M

DeWitts™ **LSX** HP Series

	32-3149003A	32-3249003A
	32-3149003M	32-3249003M
	32-6149003A	32-6249003A
	32-6149003M	32-6249003M



32-1239012M

1955-57 V8 POSITION CHEVY

High performance two row aluminum radiator for small block and big block engines. Eight-cylinder mount - to fit all factory V8 cars. Bare aluminum finish. Automatic option comes with factory style transmission cooler with factory line connections in the stock locations.

DeWitts™ Direct Fit® Pro-Series (2 Row 1" Tubes)	
Natural	Black Ice

DeWitts™ HP Series (2 Row 1.25" Tubes)	
Natural	Black Ice

Automatic	32-1139012A	32-1239012A
Manual	32-1139012M	32-1239012M
Fan Combo / Auto	32-4139012A	32-4239012A
Fan Combo / Man.	32-4139012M	32-4239012M

Automatic	32-1149012A	32-1249012A
Manual	32-1149012M	32-1249012M
Fan Combo / Auto	32-4149012A	32-4249012A
Fan Combo / Man.	32-4149012M	32-4249012M



32-1139013M

1955-57 6 CYLINDER POSITION CHEVY

High performance two row aluminum radiator for small block and big block engines. Six-cylinder mount positioned in front of the core support with the factory style bump in tank, so the hose goes over the core support. With the Black Ice option this radiator looks and fits like the original radiator. Automatic option comes with factory style transmission cooler with factory line connections in the stock locations.



32-6239013A

CHEVY BEL AIR / TRI-5 **LSX**

STANDARD V6 MOUNT POSITION This radiator is a "custom package" for all 1955-57 Chevy Tri-5 Bel Air with LSX engines with manual and automatic transmissions. Inlet and outlet are in stock position with LS sized tubing. This radiator features factory type press formed end tanks, dual row core, and serpentine fins. This radiator will provide 30% more cooling than the stock copper unit and half the weight. Features single 16" SPAL high performance fan. It is epoxy free and will fit into the stock core support. Radiator comes with 2 rows of 1" tubes, SPAL 16" fan, billet DeWitts™ cap, temp sensor in the radiator, steam line, relay, and wiring.

DeWitts™ Direct Fit® Pro-Series (2 Row 1" Tubes)	
Natural	Black Ice

DeWitts™ HP Series (2 Row 1.25" Tubes)	
Natural	Black Ice

Automatic	32-1139013A	32-1239013A
Manual	32-1139013M	32-1239013M
Fan Combo / Auto	32-4139013A	32-4239013A
Fan Combo / Man.	32-4139013M	32-4239013M

Automatic	32-1149013A	32-1249013A
Manual	32-1149013M	32-1249013M
Fan Combo / Auto	32-4149013A	32-4249013A
Fan Combo / Man.	32-4149013M	32-4249013M

DeWitts™ LSX Modified Pro-Series	
---	--

DeWitts™ LSX HP Series	
-------------------------------	--

LS Series Rad / Auto	32-3139013A	32-3239013A
LS Series Rad / Man.	32-3139013M	32-3239013M
LS Series Combo / Auto	32-6139013A	32-6239013A
LS Series Combo / Man.	32-6139013M	32-6239013M

LS Series Rad / Auto	32-3149013A	32-3249013A
LS Series Rad / Man.	32-3149013M	32-3249013M
LS Series Combo / Auto	32-6149013A	32-6249013A
LS Series Combo / Man.	32-6149013M	32-6249013M

CHEVY NOVA / CHEVY II 1962-67 **LSX** MOD.

This radiator is a “custom package” for all 1962-67 Chevy II, Nova, with LSX engines with manual or automatic transmissions. Inlet and outlet are on the passenger side. This radiator features factory type press formed end tanks, dual row core, and serpentine fins. This radiator will provide 30% more cooling than the stock copper unit and half the weight. Features dual 11” SPAL fans with 2720 CFM. It is epoxy free and will fit into the stock core support. Radiator comes with 2 rows of 1” tubes, dual fans, billet DeWitts™ cap, temp sensor in the radiator, steam line, relays, and wiring.



32-6139010A

DeWitts™ Direct Fit® Pro-Series (2 Row 1" Tubes)

	Natural	Black Ice
--	---------	-----------

Automatic	32-1139010A	32-1239010A
Manual	32-1139010M	32-1239010M
Fan Combo / Auto	32-4139010A	32-4239010A
Fan Combo / Man.	32-4139010M	32-4239010M

DeWitts™ HP Series (2 Row 1.25" Tubes)

	Natural	Black Ice
--	---------	-----------

Automatic	32-1149010A	32-1249010A
Manual	32-1149010M	32-1249010M
Fan Combo / Auto	32-4149010A	32-4249010A
Fan Combo / Man.	32-4149010M	32-4249010M

DeWitts™ **LSX** Modified Pro-Series

	Natural	Black Ice
--	---------	-----------

LS Series Rad / Auto	32-3139010A	32-3239010A
LS Series Rad / Man.	32-3139010M	32-3239010M
LS Series Combo / Auto	32-6139010A	32-6239010A
LS Series Combo / Man.	32-6139010M	32-6239010M

DeWitts™ **LSX** HP Series

	Natural	Black Ice
--	---------	-----------

LS Series Rad / Auto	32-3149010A	32-3249010A
LS Series Rad / Man.	32-3149010M	32-3249010M
LS Series Combo / Auto	32-6149010A	32-6249010A
LS Series Combo / Man.	32-6149010M	32-6249010M

1968-72 CHEVY NOVA

This radiator is a “Direct Fit®” for all 1968-72 Chevy Nova with automatic or manual transmissions (for BB, see Note). Also fits base model SB Chevelles. This radiator features factory type press formed end tanks, dual row core, serpentine fins, and the factory type upper and lower channels. This radiator will provide 30% more cooling than the stock copper unit and half the weight. It is also epoxy free. It will fit into the stock core support and it uses the original factory hoses.



32-1139011M

DeWitts™ Direct Fit® Pro-Series (2 Row 1" Tubes)

	Natural	Black Ice
--	---------	-----------

Automatic	32-1139011A	32-1239011A
Manual	32-1139011M	32-1239011M
Fan Combo / Auto	32-4139011A	32-4239011A
Fan Combo / Man.	32-4139011M	32-4239011M

DeWitts™ HP Series (2 Row 1.25" Tubes)

	Natural	Black Ice
--	---------	-----------

Automatic	32-1149011A	32-1249011A
Manual	32-1149011M	32-1249011M
Fan Combo / Auto	32-4149011A	32-4249011A
Fan Combo / Man.	32-4149011M	32-4249011M

DeWitts™ **LSX** Modified Pro-Series

	Natural	Black Ice
--	---------	-----------

LS Series Rad / Auto	32-3139011A	32-3239011A
LS Series Rad / Man.	32-3139011M	32-3239011M
LS Series Combo / Auto	32-6139011A	32-6239011A
LS Series Combo / Man.	32-6139011M	32-6239011M

DeWitts™ **LSX** HP Series

	Natural	Black Ice
--	---------	-----------

LS Series Rad / Auto	32-3149011A	32-3249011A
LS Series Rad / Man.	32-3149011M	32-3249011M
LS Series Combo / Auto	32-6149011A	32-6249011A
LS Series Combo / Man.	32-6149011M	32-6249011M

Note: For '68-'72 BB Nova, see page 22 (models 32-1139022M or 32-1139022A).



32-6139014A

1959-70 CHEVY IMPALA

This radiator is a "Direct Fit®" for all 1959-70 Chevy Impala with automatic or manual transmissions. This radiator features factory type press formed end tanks, serpentine fins, and the factory type upper and lower channels. This radiator will provide a 25% increase in cooling performance. It is also epoxy free. It will fit into the stock core support and it uses the original factory hoses.

1959-64 Impala Radiator With Notched Out Driver-side Tank For Steering Box Clearance	
32-1139014 Pro-Series	
DeWitts™ Direct Fit® Pro-Series (2 Row 1" Tubes)	
Natural	Black Ice

1959-64 Impala Radiator Full Height	
32-139015M Pro-Series	
DeWitts™ Direct Fit Pro-Series (2 Row 1" Tubes)	
Natural	Black Ice

Automatic	32-1139014A	32-1239014A
Manual	32-1139014M	32-1239014M
Fan Combo / Auto	32-4139014A	32-4239014A
Fan Combo / Man.	32-4139014M	32-4239014M

Automatic	32-1139015A	32-1239015A
Manual	32-1139015M	32-1239015M
Fan Combo / Auto	32-4139015A	32-4239015A
Fan Combo / Man.	32-4139015M	32-4239015M

DeWitts™ **LSX** Modified Pro-Series

DeWitts™ **LSX** Modified Pro-Series

LS Series Rad / Auto	32-3139014A	32-3239014A
LS Series Rad / Man.	32-3139014M	32-3239014M
LS Series Combo / Auto	32-6139014A	32-6239014A
LS Series Combo / Man.	32-6139014M	32-6239014M

LS Series Rad / Auto	32-3139015A	32-3239015A
LS Series Rad / Man.	32-3139015M	32-3239015M
LS Series Combo / Auto	32-6139015A	32-6239015A
LS Series Combo / Man.	32-6139015M	32-6239015M



1965-70 Impala Radiator Full Height	
DeWitts™ Direct Fit® Pro-Series (2 Row 1" Tubes)	
Natural	Black Ice

DeWitts™ HP Series (2 Row 1.25" Tubes)	
Natural	Black Ice

Automatic	32-1139016A	32-1239016A
Manual	32-1139016M	32-1239016M
Fan Combo / Auto	32-4139016A	32-4239016A
Fan Combo / Man.	32-4139016M	32-4239016M

Automatic	32-1149016A	32-1249016A
Manual	32-1149016M	32-1249016M
Fan Combo / Auto	32-4149016A	32-4249016A
Fan Combo / Man.	32-4149016M	32-4249016M

DeWitts™ **LSX** Modified Pro-Series

DeWitts™ **LSX** HP Series

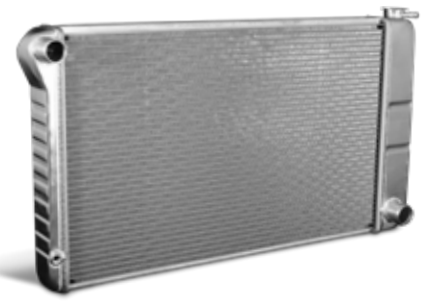
LS Series Rad / Auto	32-3139016A	32-3239016A
LS Series Rad / Man.	32-3139016M	32-3239016M
LS Series Combo / Auto	32-6139016A	32-6239016A
LS Series Combo / Man.	32-6139016M	32-6239016M

LS Series Rad / Auto	32-3149016A	32-3249016A
LS Series Rad / Man.	32-3149016M	32-3249016M
LS Series Combo / Auto	32-6149016A	32-6249016A
LS Series Combo / Man.	32-6149016M	32-6249016M

1971-79 & 1986-90 IMPALA



This radiator is a “Direct Fit®” for all 1971-79 and 1986-90 BB manual or automatic transmissions. Also fits SB Impalas with AC. This radiator features factory type press formed end tanks, dual row core, serpentine fins, and the factory type upper and lower channels. This radiator will provide 30% more cooling than the stock copper unit and half the weight. It is also epoxy free. It will fit into the stock core support and it uses the original factory hoses. (Features an internal transmission cooler for automatics.)



32-1139003M

IMPALA 1971-79 & 1986-90 ALL **LSX** MODIFIED

This radiator is a “custom package” for all 1971-79 and 1986-90 Impalas with LSX engines with manual transmission. Inlet and outlet are on the passenger side. This radiator features factory type press formed end tanks, dual row core, and serpentine fins. This radiator will provide 30% more cooling than the stock copper unit and half the weight. Features dual 11" SPAL fans with 2720 CFM. It is epoxy free and will fit into the stock core support. Radiator comes with 2 rows of 1" tubes, dual fans, billet DeWitts™ cap, temp sensor in the radiator, steam line, relays, and wiring.



32-6239003M

DeWitts™ Direct Fit® Pro-Series (2 Row 1" Tubes)		
Natural	Black Ice	
Automatic	32-1139003A	32-1239003A
Manual	32-1139003M	32-1239003M
Fan Combo / Auto	32-4139003A	32-4239003A
Fan Combo / Man.	32-4139003M	32-4239003M

DeWitts™ HP Series (2 Row 1.25" Tubes)		
Natural	Black Ice	
Automatic	32-1149003A	32-1249003A
Manual	32-1149003M	32-1249003M
Fan Combo / Auto	32-4149003A	32-4249003A
Fan Combo / Man.	32-4149003M	32-4249003M

DeWitts™ LSX Modified Pro-Series		
LS Series Rad / Auto	32-3139003A	32-3239003A
LS Series Rad / Man.	32-3139003M	32-3239003M
LS Series Combo / Auto	32-6139003A	32-6239003A
LS Series Combo / Man.	32-6139003M	32-6239003M

DeWitts™ LSX HP Series		
Automatic	32-3149003A	32-3249003A
Manual	32-3149003M	32-3249003M
Fan Combo / Auto	32-6149003A	32-6249003A
Fan Combo / Man.	32-6149003M	32-6249003M





32-1139005M

1980-90 IMPALA



This is a true “Direct Fit®” aluminum radiator for 1980-90 Impalas. Unlike other “universal” aftermarket radiators, this model features the factory type upper channels, stock hose connections, and press formed tanks. It is also epoxy free. No cutting or modifying is required. This radiator features two rows of 1” wide tubes and will provide 30% more cooling than an equal size four row copper radiator.



32-6239005M

IMPALA 1980-90 ALL **LSX** MODIFIED

This radiator is a “custom package” for all 1980-90 Impalas with LSX engines with manual or automatic transmissions. Inlet and outlet are on the passenger side. This radiator features factory type press formed end tanks, dual row core, and serpentine fins. This radiator will provide 30% more cooling than the stock copper unit and half the weight. Features dual 11” SPAL fans with 2720 CFM. It is epoxy free and will fit into the stock core support. Radiator comes with 2 rows of 1” tubes, dual fans, billet DeWitts™ cap, temp sensor in the radiator, steam line, relays, and wiring.

DeWitts™ Direct Fit® Pro-Series (2 Row 1" Tubes)

	Natural	Black Ice
Automatic	32-1139005A	32-1239005A
Manual	32-1139005M	32-1239005M
Fan Combo / Auto	32-4139005A	32-4239005A
Fan Combo / Man.	32-4139005M	32-4239005M

DeWitts™ HP Series (2 Row 1.25" Tubes)

	Natural	Black Ice
	32-1149005A	32-1249005A
	32-1149005M	32-1249005M
	32-4149005A	32-4249005A
	32-4149005M	32-4249005M

DeWitts™ **LSX** Modified Pro-Series

LS Series Rad / Auto	32-3139005A	32-3239005A
LS Series Rad / Man.	32-3139005M	32-3239005M
LS Series Combo / Auto	32-6139005A	32-6239005A
LS Series Combo / Man.	32-6139005M	32-6239005M

DeWitts™ **LSX** HP Series

	32-3149005A	32-3249005A
	32-3149005M	32-3249005M
	32-6149005A	32-6249005A
	32-6149005M	32-6249005M

1994-96 IMPALA

This is a true “Direct Fit®” aluminum radiator for 1994-96 Impalas. Unlike other “universal” aftermarket radiators, this model features the factory type upper channels, stock hose connections, and press formed tanks. It is also epoxy free. No cutting or modifying is required. This radiator features two rows of 1” wide tubes and will provide 30% more cooling than an equal size four row copper radiator.

DeWitts™ Direct Fit® Pro-Series (2 Row 1" Tubes)

	Natural	Radiator Fan Combo
Auto and Oil Cooler	32-1139044B	32-4139044B

DeWitts™ **LSX** Modified Pro-Series

LS Series Rad / Auto	32-3139044A	32-3139044AF
LS Series Rad / Man.	32-3139044M	32-3139044MF

1978-87 CHEVY MONTE CARLO G-BODY

This radiator is a "Direct Fit®" for all 1978-87 G-Body Monte Carlos with automatic or manual transmissions. This radiator features factory type press formed end tanks, dual row core, serpentine fins, and the factory type upper and lower channels. This radiator will provide 30% more cooling than the stock copper unit and half the weight. It is also epoxy free. It will fit into the stock core support and it uses the original factory hoses.



32-1139005M

Manual Transmission Radiator	32-1139005M
Automatic Transmission Radiator	32-1139005A
+ Black Ice Coating / Manual	32-1239005M
+ Black Ice Coating / Automatic	32-1239005A
+ Dual SPAL Fan / Manual	32-4139005M
+ Dual SPAL Fan / Automatic	32-4139005A
+ Dual SPAL Fan / Manual / Black Ice Coating	32-4239005M
+ Dual SPAL Fan / Automatic / Black Ice Coating	32-4239005A



2004-07 & 2009-14 CADILLAC CTS-V

"Direct Fit®" aluminum high performance single row 1.5" core radiator. Single row radiator features 1.5" cooling tubes with 16 FPI. This design increases cooling surfaces by 50% over stock unit, and feature formed aluminum tanks, eliminating the stock plastic tanks.



2004-2007 Cadillac CTS-V

32-1129124M

2009-2014 Cadillac CTS-V

32-1139126A



32-6139017A

CHEVY C10 TRUCK 1963-66 **LSX** MODIFIED

This radiator is a "custom package" for all 1963-66 C10 Chevy Trucks with LSX engines with manual and automatic transmissions. Inlet and outlet are on the passenger side. This radiator features factory type press formed end tanks, dual row core, and serpentine fins. This radiator will provide 30% more cooling than the stock copper unit and half the weight. Features dual 11" SPAL fans with 2720 CFM. It is epoxy free and will fit into the stock core support. Radiator comes with 2 rows of 1" tubes, dual fans, billet DeWitts™ cap, temp sensor in the radiator, steam line, relays, and wiring.

1963-66 C10 Truck

	DeWitts™ Direct Fit® Pro-Series (2 Row 1" Tubes)		DeWitts™ LSX Modified Pro-Series	
	Natural	Black Ice	Natural	Black Ice
Automatic	32-1139017A	32-1239017A	32-3139017A	32-3239017A
Manual	32-1139017M	32-1239017M	32-3139017M	32-3239017M
Fan Combo / Auto	32-4139017A	32-4239017A	32-6139017A	32-6239017A
Fan Combo / Man.	32-4139017M	32-4239017M	32-6139017M	32-6239017M

CHEVY C10 TRUCK/BLAZER 1967-72 **LSX** MODIFIED



32-6239018A

This radiator is a "custom package" for all 1967-72 C10 Trucks/Blazer with LSX engines with manual transmission. Inlet and outlet are on the passenger side. This radiator features factory type press formed end tanks, 18.5" dual row core, and serpentine fins. This radiator will provide 30% more cooling than the stock copper unit and half the weight. Features dual 11" SPAL fans with 2720 CFM. It is epoxy free and will fit into the stock core support. Radiator comes with 2 rows of 1" tubes, dual fans, billet DeWitts™ cap, temp sensor in the radiator, steam line, relays, and wiring.

1967-72 C10 Truck (18.5" Tall x 28.25" Core)

	DeWitts™ Direct Fit® Pro-Series (2 Row 1" Tubes)		DeWitts™ LSX Modified Pro-Series	
	Natural	Black Ice	Natural	Black Ice
Automatic	32-1139018A	32-1239018A	32-3139018A	32-3239018A
Manual	32-1139018M	32-1239018M	32-3139018M	32-3239018M
Fan Combo / Auto	32-4139018A	32-4239018A	32-6139018A	32-6239018A
Fan Combo / Man.	32-4139018M	32-4239018M	32-6139018M	32-6239018M

CHEVY C10 TRUCK/BLAZER 1973-87 **LSX** MODIFIED

This radiator is a "custom package" for all 1973-87 C10 Trucks/Blazer with LSX engines with manual transmission. Inlet and outlet are on the passenger side. This radiator features factory type press formed end tanks, 20.5" dual row core, and serpentine fins. This radiator will provide 30% more cooling than the stock copper unit and half the weight. Features dual 11" SPAL fans with 2720 CFM. It is epoxy free and will fit into the stock core support. Radiator comes with 2 rows of 1" tubes, dual fans, billet DeWitts™ cap, temp sensor in the radiator, steam line, relays, and wiring.



32-6239019A

	1973-87 C10 Truck (20.5" Tall x 28.25" Core)			
	DeWitts™ Direct Fit® Pro-Series (2 Row 1" Tubes)		DeWitts™ LSX Modified Pro-Series	
	Natural	Black Ice	Natural	Black Ice
Automatic	32-1139019A	32-1239019A	32-3139019A	32-3239019A
Manual	32-1139019M	32-1239019M	32-3139019M	32-3239019M
Fan Combo / Auto	32-4139019A	32-4239019A	32-6139019A	32-6239019A
Fan Combo / Man.	32-4139019M	32-4239019M	32-6139019M	32-6239019M

ADDITIONAL TRUCK OFFERINGS

	DeWitts™ Direct Fit® Pro-Series (2 Row 1" Tubes)
	Natural
'81-'87 C/K Chevy Truck Diesel Both Trans and Oil Cooler	32-1139050B
'88-'95 C/K Chevy Truck 28.25" Core Both Trans and Oil Cooler	32-1139051B
'88-'93 C/K Pickup 34" Core Both Tans and Oil Cooler	32-1139052B
'99-'03 Silverado 5.3L 28.25" Core Automatic	32-1139057A
'00-'07 Silverado Both Trans and Oil Cooler	32-1139054B
'06-'10 Duramax Automatic	32-1139056A
'06 Hummer Alpha 1 No Cooler/HP Core	32-1149029M

	DeWitts™ LSX Modified Pro-Series	
	Natural	Black Ice
Automatic	32-3139051A	32-3239051A
Manual	32-3139051M	32-3239051M
Automatic	32-3139052A	32-3239052A
Manual	32-3139052M	32-3239052M





32-1138003M

MUSTANG 1964-66



This radiator features two rows of 1" tubes and serpentine fins at 15 fins per inch. Connections are at the top right and bottom right. Available for manual or automatic transmissions.

Top Left / Bottom Right Connections

	DeWitts™ Direct Fit® Pro-Series (2 Row 1" Tubes)		DeWitts™ HP Series (2 Row 1.25" Tubes)	
	Natural	Black Ice	Natural	Black Ice
Automatic	32-1138001A	32-1238001A	32-1148001A	32-1248001A
Manual	32-1138001M	32-1238001M	32-1148001M	32-1248001M
Fan Combo / Auto	32-4138001A	32-4238001A	32-4148001A	32-4248001A
Fan Combo / Man.	32-4138001M	32-4238001M	32-4148001M	32-4248001M

Top Right / Bottom Left Connections

	DeWitts™ Direct Fit® Pro-Series (2 Row 1" Tubes)		DeWitts™ HP Series (2 Row 1.25" Tubes)	
	Natural	Black Ice	Natural	Black Ice
Automatic	32-1138002A	32-1238002A	32-1148002A	32-1248002A
Manual	32-1138002M	32-1238002M	32-1148002M	32-1248002M
Fan Combo / Auto	32-4138002A	32-4238002A	32-4148002A	32-4248002A
Fan Combo / Man.	32-4138002M	32-4238002M	32-4148002M	32-4248002M

Top Right / Bottom Right Connections

	DeWitts™ Direct Fit® Pro-Series (2 Row 1" Tubes)		DeWitts™ HP Series (2 Row 1.25" Tubes)	
	Natural	Black Ice	Natural	Black Ice
Automatic	32-1138003A	32-1238003A	32-1148003A	32-1248003A
Manual	32-1138003M	32-1238003M	32-1148003M	32-1248003M
Fan Combo / Auto	32-4138003A	32-4238003A	32-4148003A	32-4248003A
Fan Combo / Man.	32-4138003M	32-4238003M	32-4148003M	32-4248003M



32-1138004A

MUSTANG 1967 (289)

This radiator features two rows of 1" tubes and serpentine fin at 15 fins per inch. Connections are at the top right and bottom right. Used on Mach 1 and also fits 1967-70 with 390/427/428 and 1970 302/351 Mustang and Cougar with HD cooling. Available for manual or automatic transmissions.

Top Right / Bottom Right Connections

	DeWitts™ Direct Fit® Pro-Series (2 Row 1" Tubes)		DeWitts™ HP Series (2 Row 1.25" Tubes)	
	Natural	Black Ice	Natural	Black Ice
Automatic	32-1138004A	32-1238004A	32-1148004A	32-1248004A
Manual	32-1138004M	32-1238004M	32-1148004M	32-1248004M
Fan Combo / Auto	32-4138004A	32-4238004A	32-4148004A	32-4248004A
Fan Combo / Man.	32-4138004M	32-4238004M	32-4148004M	32-4248004M



1968-70 MUSTANG

This radiator features press formed tanks similar to the original brass/copper unit. It has two rows of 1" tubes and serpentine fins at 15 fins per inch. The hose connection locations vary per application. Note: Upper tank is formed from original 4-row copper brass tank and may require the larger upper bracket. Check your vehicle's configuration first and then choose the correction application from the list below.



32-4138005M

Top Left / Bottom Right Connections

DeWitts™ Direct Fit® Pro-Series (2 Row 1" Tubes)

	Natural	Black Ice
Automatic	32-1138005A	32-1238005A
Manual	32-1138005M	32-1238005M
Dual Fan Combo / Auto	32-4138005A	32-4238005A
Dual Fan Combo / Man.	32-4138005M	32-4238005M

Top Right / Bottom Left Connections

DeWitts™ Direct Fit® Pro-Series (2 Row 1" Tubes)

	Natural	Black Ice
Automatic	32-1138006A	32-1238006A
Manual	32-1138006M	32-1238006M
Dual Fan Combo / Auto	32-4138006A	32-4238006A
Dual Fan Combo / Man.	32-4138006M	32-4238006M

Top Right / Bottom Right Connections

DeWitts™ Direct Fit® Pro-Series (2 Row 1" Tubes)

	Natural	Black Ice
Automatic	32-1138007A	32-1238007A
Manual	32-1138007M	32-1238007M
Dual Fan Combo / Auto	32-4138007A	32-4238007A
Dual Fan Combo / Man.	32-4138007M	32-4238007M



1971-73 MUSTANG

This radiator features two rows of 1" tubes and serpentine fins at 15 fins per inch. Connections are at the top right and bottom left. For manual or automatic transmissions.

Double Row Radiator / Manual	32-1138009M
Double Row Radiator / Automatic	32-1138009A
+Black Ice Coating / Manual	32-1238009M
+Black Ice Coating / Automatic	32-1238009A
+Dual SPAL Fan / Manual	32-4138009M
+Dual SPAL Fan / Automatic	32-4138009A
+Dual SPAL Fan / Manual / Black Ice Coating	32-4238009M
+Dual SPAL Fan / Automatic / Black Ice Coating	32-4238009A



1974-78 MUSTANG

This radiator features two rows of 1" tubes and serpentine fins at 15 fins per inch. Connections are at the top right and bottom left. For manual or automatic transmissions.

Manual Transmission Radiator	32-1138011M
Automatic Transmission Radiator	32-1138011A
+Black Ice Coating / Manual	32-1238011M
+Black Ice Coating / Automatic	32-1238011A
+16" SPAL Fan 1918 CFM / Manual	32-4138011M
+16" SPAL Fan 1918 CFM / Automatic	32-4138011A
+16" SPAL Fan / Manual / Black Ice Coating	32-4238011M
+16" SPAL Fan / Automatic / Black Ice Coating	32-4238011A



1979-93 MANUAL MUSTANG

This radiator features two rows of 1" tubes and serpentine fins at 15 fins per inch. Available for manual transmissions.

Manual Transmission Radiator	32-1138012M
Automatic Transmission Radiator	32-1138012A
+Black Ice Coating / Manual	32-1238012M
+Black Ice Coating / Automatic	32-1238012A
+Dual SPAL Fan / Manual	32-4138012M
+Dual SPAL Fan / Automatic	32-4138012A
+Dual SPAL Fan / Manual / Black Ice Coating	32-4238012M
+Dual SPAL Fan / Automatic / Black Ice Coating	32-4238012A

1994-96 MUSTANG

This radiator features two rows of 1" tubes and serpentine fins at 15 fins per inch. Connections are at the top right and bottom left. For manual or automatic transmissions.

Double Row Radiator / Manual

32-1138013M

Double Row Radiator / Automatic

32-1138013A



1997-2004 MUSTANG

This radiator features two rows of 1" tubes and serpentine fin at 15 fins per inch. Connections are top right and bottom left. Available for manual or automatic transmissions.

Double Row Radiator / Manual

32-1138014M

Double Row Radiator / Automatic

32-1138014A



2005-14 MUSTANG GT

This radiator features two rows of 1.25" tubes and serpentine fins at 15 fins per inch. Fits manual '05- '14 V6 & GT, '07- '09 Shelby GT.

Manual Transmission Radiator

32-1138015M



2015-17 MUSTANG GT

This new high performance "Direct Fit®" aluminum radiator has formed aluminum end tanks that are TIG-welded to the core, eliminating failures due to cracked plastic end tanks and/or gasket leaks. This unit fits into the original mounting. The factory connections, stock fan shroud mounting, and condenser are all in place for easy installation.

Two Row 1.25" Tube

32-1148035M

Two Row 1.0" Tube

32-1138035M





32-SP480



32-SP480
(Shown on radiator)

UNIVERSAL BRUSHLESS FAN KIT **NEW!**

An industry exclusive solution for mounting SPAL's 300 or 500-watt brushless fans to nearly any radiator. Injection molded from a heat resistant space age polymer offering decades of performance and durability. Easily trimmable to fit most applications and offers full coverage on core sizes between 22.5" to 27.5" wide. A "Direct Fit®" on all models built with hat channel side supports. Includes all mounting hardware and flaps.



HAT CHANNEL



DIRECT FIT®

The new SPAL brushless fans are ideal for engine and oil cooling, HVAC, and auxiliary cooling applications. These new fans were developed and designed with cutting edge technology, high energy ferrite magnets, and a state-of-the-art sine wave sensorless drive. These motors reach more than 82% electrical efficiency, placing our 300W and 500W power range products among the most efficient motors available anywhere. The result is high air-side performance at minimum electrical load. SBL motors are fully sealed to be IP68 and IP6K9K compliant and can operate in the presence of many aggressive or hazardous substances.

Complete Kit (Shown)

32-SP480

Shroud Only

32-SP080

STANDARD FEATURES

- PWM and analog input for continuous adjustment of fan speed.
- Open collector diagnostic output.
- Meets EMC directives: 2006/28/EC.
- Low weight motor.
- Higher ambient working temperature.

- Protection against:
 - Overheating.
 - Overcurrent and overvoltage.
 - Mechanical overload.
 - Locked rotor.
 - Load dump.

ADVANCED FEATURES

- High efficiency and low power consumption.
- Low noise, vibration, and harshness.
- Electronic controls with on-board diagnostics.
- Motor with integrated electronics.
- Battery compensation system.
- Proprietary sine-wave sensorless drive (SPAL-patent).
- Low inertia inner rotor design.



1963-72 SB CORVETTE FAN KIT

This package is for one (1) 16" high performance "pull" fan and bracket kit. It includes a relay harness and 195 temperature switch. The fan provides 1918 CFM at 21.8 amps. These brackets are designed to fit the "pin mount" type radiator used on 1963-72 small block Corvettes only. The fan kit replaces the stock engine driven fan and shroud.

Note: A shroud can be used to hide the electric fan, however, slight trimming of the shroud will be necessary.



32-SP004

16" CORVETTE FAN KIT

This package is for one (1) 16" high performance "pull" fan, bracket kit and hardware. The kit also includes one relay harness and 195 temperature switch. Brackets are designed to fit all factory GM copper/brass radiators, Griffin aluminum radiators, and DeWitts™ "Direct Fit™" aluminum radiators. 1918 CFM at 10" static pressure 12vdc 21.8 amp. draw 16.22" x 15.63" x 3.45" SPAL Model 30102120.



32-SP006

GM DUAL FAN KIT

DeWitts™ has created a complete kit to add a dual fan to your GM vehicle. This package includes the SPAL dual fans, two wire harnesses, two relays, and one temperature switch. Custom brackets are designed to fit all factory GM crossflow radiators, Griffin radiators, and DeWitts™ "Direct Fit™". 2720 CFM at 10" static pressure 12vdc 31.6 amp. draw 16.26" x 23.46" x 4.25" SPAL Model 30102052.



32-SP460

C3 CORVETTE FAN KIT

This kit includes the following items: 17" SPAL brushless fan (31007090), variable temperature sensor (SBL-TS-185P), DeWitts™ custom C3 aluminum shroud, fan harness adapter (SBL-TS-HARN), and jumper harness (SBL-YEAZ-PT).



32-SP466

1984-89 CORVETTE FAN KIT

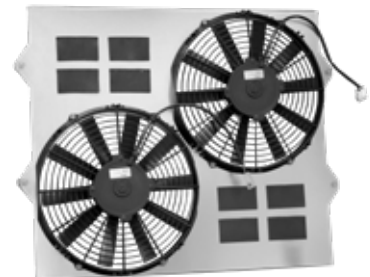
Now you can upgrade the factory 1700 CFM with this high performance (1918 CFM) fan. Fan comes with a "Direct Fit™" adapter plate, ready to bolt on and no cutting or splicing of wires is needed. We supply this fan with a harness-matching plug.



32-SP464

CADILLAC CTS-V FAN KIT

Bolt on dual fan kit on an aluminum shroud.



32-SP030



1990-96 CORVETTE FAN KIT

Replace the factory fans with this 11" high performance SPAL puller fan. DeWitts™ has designed custom brackets for both factory single row cores and DeWitts™ "Direct Fit®" double row radiators. The evaporator mounting bracket must be modified, as this fan provides no supporting system.



DeWitts™ 2-Row Core

32-SP461

GM Single Row Core

32-SP462

C6 CORVETTE FAN UPGRADE

SPAL's dual fan package boosts air flow up 40% from stock. This fan package only fits our "Direct Fit®" radiators.

Note: Factory wiring will need to be cut and spliced in order for the factory ECM to operate the fans.



32-SP463

C5 CORVETTE FAN KIT

We completely redesigned our C5 fan package to utilize a laser-cut aluminum shroud. The shroud incorporates four rubber flapper valves to improve air flow at high speeds and close at slower speeds. Two SPAL 12" high performance fans provide 3260 CFM, which doubles the factory output. DeWitts™ customized the fans with matching Corvette fan plugs, so no cutting or splicing is required.

All Standard height C5 models

DeWitts™ "Short" models for extra top clearance



32-SP015

32-SP015-SC

C6 BRUSHLESS FAN KIT



This kit includes the SPAL 17" brushless fan: 30107090, DeWitts™ custom C6 aluminum shroud, a variable temperature control sensor (SBL-TS-185P), a fan harness adapter (SBL-TS-HARN), and a jumper harness (SBL-YAZ-PT).

32-SP471

SPAL RELAY HARNESS AND TEMPERATURE SWITCH



Wiring harness, fuse link, relay, and 195 temperature switch. This switch is fully automatic (non-adjustable) with set points at 195 on and 175 off.

Complete Kit

32-SP195FH

Relay Harness

32-SPFRH

Switch

32-SP195

ENGINE OIL ADAPTER LS SERIES PACKAGE



This package includes the oil adapter, GM oil seal, metric bolts, and a 1/8" NPT plug. It bolts directly to any LS series engine and provides two large #10AN connections. It is ideal for external oil coolers. This adapter has a port for the factory temperature sender and an auxiliary port for other needs.

LS Series Adapter 180 T-Stat	32-892
LS Series Adapter 212 T-Stat	32-892-212

LS SERIES ENGINE OIL HOSE KIT



This kit includes the Improved Racing oil adapter, GM oil seal, metric bolts, and 1/8" NPT plug. Bolts directly to any LS series engine and provides two large #10AN connections. This adapter has a port for the factory temperature sender and an auxiliary port for other needs. Kit also includes (4) four steel AN fittings and two aeroquip stainless steel hose assemblies for left side mounted EOC.

C5 Corvette	32-894C
C6 Corvette	32-894D

ENGINE OIL LINES W/ BYPASS C5 / C6 CORVETTE ENGINE OIL LINES

This is a modified GM hose assembly for use with driver side (left) EOC applications. The adapter block includes a port for the oil pressure switch. On C5 model and GM Quick Connect fittings for radiator.



C5 Corvette	32-898
C6 Corvette	32-899

15 PSI GRIPPER CAP



32-514B



32-514

DeWitts™ logo engraved radiator cap. Custom grip notches for easy removal.

Brushed	32-514
Black	32-514B

15 PSI SMOOTH CAP



32-512B



32-512

DeWitts™ logo engraved radiator cap.

Brushed	32-512
Black	32-512B

SHORT CHROME HEATER HOSE FITTING



These short chrome heater hose fittings can be used for an intake and water pump. Come standard with 1/2" NPT thread and available to fit 5/8" and 3/4" hoses.

Chrome Fitting - 5/8" Hose	32-66369
Chrome Fitting - 3/4" Hose	32-66376

CHROME 90° HEATER HOSE FITTING



These chrome 90° heater hose fittings can be used for an intake and water pump. Come standard with 1/2" NPT thread and available to fit 5/8" and 3/4" hoses.

Chrome 90° Fitting - 5/8" Hose	32-66380
Chrome 90° Fitting - 3/4" Hose	32-66382

TRANSMISSION COOLER ADAPTER FITTINGS



Adapter #6 to 1/2"-20 IFM	32-4800
Adapter #6 to 5/8"-18 IFM	32-4802
Adapter 18mm	32-4808
Adapter M18-1.5 Metric-3/8"	32-876A
Adapter Female 3/8"	32-876F
Adapter -6 AN-3/8"	32-60460

C3 CUSTOM CUSHION



We now offer a custom rubber cushion that is designed to fit exactly into the factory metal U brackets and hold our Direct Fit® aluminum radiator firmly in place. This cushion is designed to fit all C3 Corvettes and other GM models that use our standard 2.25" core with GM type hat channels. This cushion is custom and designed for DeWitts™ radiators only. Sold individually.

32-579

UNIVERSAL RADIATOR HOSE KIT



This kit is perfect for your custom project and is offered as a starter kit for most applications. Kit includes silicone 1-1/2" and 1-3/4" ID 90° hoses 12" long, 1-1/2" 45° hose 8-1/2" long, and 1-3/4" ID straight hose 6" long. Also includes one 1-3/4" ID 45° aluminum tube 12" long, and one 1-1/2" ID straight aluminum tube 6" long.

32-71051

STEPPED SILICONE RADIATOR HOSES



These 8" long stepped silicone radiator/coolant hoses can be cut to length, allowing you to build just what you need. The 3 layer, reinforced silicone material exceeds SAE standards and is designed for today's high temp, high pressure cooling systems. These hoses are rated -100°F to +380°F.

1.25"-1.50" Stepped Hose	32-1035
1.25"-1.75" Stepped Hose	32-1036

STRAIGHT SILICONE RADIATOR HOSES



These universal fit silicone radiator/coolant hoses come in 6" & 12" lengths that can be cut down to fit what you need. The 3 layer, reinforced silicone material exceeds SAE standards and is designed for today's high temp, high pressure cooling systems. These hoses are rated -100°F to +380°F.

6" Length 1.25" ID	32-1006-1.25
6" Length 1.50" ID	32-1006-1.50
6" Length 1.75" ID	32-1006-1.75
12" Length 1.25" ID	32-1007-1.25
12" Length 1.50" ID	32-1007-1.50
12" Length 1.75" ID	32-1007-1.75

90° SILICONE RADIATOR HOSES



These 12" long 90° silicone radiator/coolant hoses can be cut to length, allowing you to build just what you need. The 3 layer, reinforced silicone material exceeds SAE standards and is designed for today's high temp, high pressure cooling systems. These hoses are rated -100°F to +380°F.

12" Length 1.25" ID	32-1010-1.25
12" Length 1.50" ID	32-1010-1.50
12" Length 1.75" ID	32-1010-1.75

105° ALUMINUM RADIATOR HOSE CONNECTORS



These 105° bend aluminum tubes allow you to build custom radiator / coolant hoses. Each tube features a bead at each end to retain the hose under pressure. Tubes can be cut shorter to provide a custom-tailored fit if needed. Available in 1.5" and 1.75" OD tube sizes.

1.50" OD 105° Tube	32-1003-1.50
1.75" OD 105° Tube	32-1003-1.75

45° SILICONE RADIATOR HOSES



These 12" long 45° silicone radiator/coolant hoses can be cut to length, allowing you to build just what you need. The 3 layer, reinforced silicone material exceeds SAE standards and is designed for today's high temp, high pressure cooling systems. These hoses are rated -100°F to +380°F.

12" Length 1.25" ID	32-1008-1.25
12" Length 1.50" ID	32-1008-1.50
12" Length 1.75" ID	32-1008-1.75

90° ALUMINUM RADIATOR HOSE CONNECTORS



These 90° bend aluminum tubes allow you to build custom radiator / coolant hoses. Each tube features a bead at each end to retain the hose under pressure. Tubes can be cut shorter to provide a custom-tailored fit if needed. Available in 1.25", 1.5", and 1.75" OD tube sizes.

1.25" OD 90° Tube	32-1001-1.25
1.50" OD 90° Tube	32-1001-1.50
1.75" OD 90° Tube	32-1001-1.75

135° ALUMINUM RADIATOR HOSE CONNECTORS



These 135° bend aluminum tubes allow you to build custom radiator / coolant hoses. Each tube features a bead at each end to retain the hose under pressure. Tubes can be cut shorter to provide a custom-tailored fit if needed. Available in 1.25", 1.5", and 1.75" OD tube sizes.

1.25" OD 135° Tube	32-1005-1.25
1.50" OD 135° Tube	32-1005-1.50
1.75" OD 135° Tube	32-1005-1.75

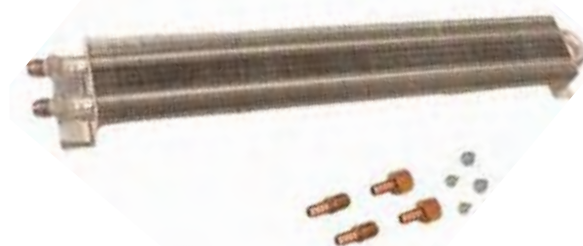
ALUMINUM HEATSINK TRANSMISSION COOLERS



These all-aluminum transmission coolers are designed for maximum heat transfer and mount easily to most frame rails. Available in compact and efficient sizes of 12", 15" or 18" lengths. Includes two hose nipples to fit 3/8" hoses.

12" Length	32-23112
15" Length	32-23115
18" Length	32-23118

TRANSMISSION COOLER FRAME RAIL MOUNT



This new transmission cooler fits along the frame rail or another out-of-the-way location and delivers exceptional cooling. This transmission cooler measures 17.5" overall length, 2.5" overall width, and 1.75" overall height. The two-row cooling design has a -6 AN inlet size and comes with all necessary hardware and instructions for an easy installation.

32-23111

HONEYCOMB RADIATOR PROTECTOR 22" x 31" MESH PROTECTOR SCREEN

This guard can be placed directly in front of the radiator and will protect your aluminum radiator. Made of rigid Nomex material which is lightweight yet strong enough to take on the abuse of road debris or to combat those pesky bugs at highway speeds. Comes in 22" x 31" screen is 1/2" thick and can be easily trimmed with a utility knife to fit various radiator sizes.



32-34216

DEWITTS™ COOLANT HIGH PERFORMANCE COOLANT

Specifically formulated to be an all-season coolant/antifreeze for high performance engines. It contains a patented low silicate corrosion protection package that prevents rust as well as corrosion and it is specifically engineered to protect materials used in modern performance engines. DeWitts™ Coolant offers a more advanced additive package than standard "green" coolants and maintains better thermal conductivity and heat transfer than propylene glycol (PG) based coolants. The advanced additive package contains special anti-foam agents to reduce water pump cavitation and increase cooling capacity. DeWitts™ Coolant meets GM 1899M, Ford ESE-M97B-44-A, and Chrysler MS7170 specifications and is compatible with all nationally distributed coolants and liquid coolant additives. System protection is maintained from -34°F to +265°F when used with a 15lb. radiator.



DeWitts™ High Performance Coolant

32-305