

2020

**HIGH PERFORMANCE
ALUMINUM RADIATORS**



ABOUT

DeWitts™ aluminum radiators are made in Michigan and 100% of the manufacturing process is managed in house. Our CAB brazing furnace allows us to produce the finest aluminum cores in the industry. We have the capability to build custom aluminum radiators with a variety of tube widths and fin designs. We have several fin machines to produce the type of fin required for your application. Most of our radiators are assembled with press-formed end tanks. This eliminates the fabrication seams and potential leak points of a common box tank. It also provides an original look for those classic cars. Every radiator is available with our Black Ice Coating. We have expanded our line to many other makes and models. If you do not see your application listed, just give us call and we'll custom build one for you.



MADE IN THE USA

Located in Howell, Michigan, our modern facility is the ultimate location for proto-typing and developing your next project.



LEADING ENGINEERING

Our engineering professionals use the most advanced platforms, such as SolidWorks, to design the most innovative products in the industry.



ADVANCED MANUFACTURING

Our robotic welding cell for high volume production features a new Fanuc Robot and CMT technology. We also have water jet, laser cut, CNC brake and other capabilities.



NEW - ISO 9001:2015 CERTIFICATION

DeWitts™ is ISO 9001:2015 certified, which is an international standard of organization. It lets customers, like you, know that we are committed to quality.



PROJECT CONSULTATION

With over 100 years of combined experience, the DeWitts™ staff is ready to help you get the best cooling package implemented for your project.



CONTENTS

- 4 BRAZING SERVICES
- 6 CORVETTE
- 13 CADILLAC
- 13 CAMARO
- 15 CHEVELLE
- 17 CHEVY
- 19 LSX & MODIFIED
- 29 MUSTANG
- 33 ACCESSORIES
- 35 SPAL FANS

WE OFFER COMPLETE BRAZING SERVICES INCLUDING DESIGN AND DEVELOPMENT OF BRAZING FIXTURES.

■ BRAZING CONSULTATION & DEVELOPMENT

Let our experts guide you through the process and develop a plan that fits your needs, budget, and timeline.

■ PRODUCTION BRAZING

Our brazing knowledge and experience will help minimize the cost of your prototype and development.

■ ALUMINUM CORES

We produce high-quality aluminum cores for many types of industries. Single row core sizes are 1.00", 1.25", and 1.50". Dual row core sizes are 1.00" and 1.25".

■ HEADERS

Custom header lengths are available with custom side channel options.



STATE-OF-THE-ART ALUMINUM BRAZING

FURNACE SPECIFICATIONS 30" WIDE BELT
8" PASS HEIGHT



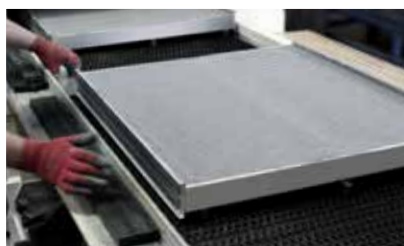
OUR CORE STANDARDS

- EXTRUDED SIDE CHANNELS.
- TWO SIDE CLADDED HEADERS.
- SERPENTINE FIN.

Serpentine
Louvered
Fin @ 15fpi

Clad Fillets
on Both
Sides

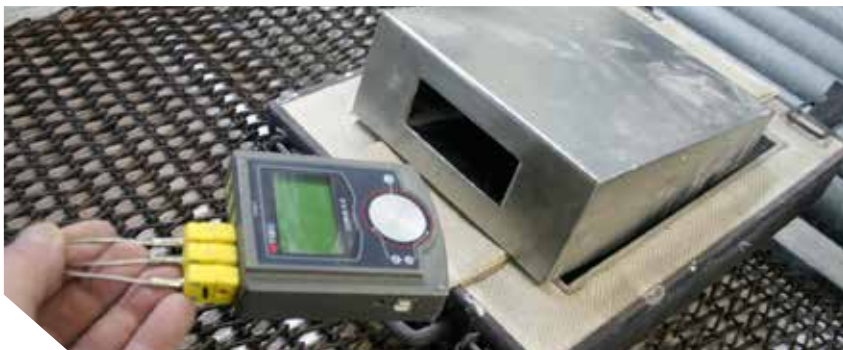
Double
Cladded .080
Headers



The furnace is controlled via a touch screen HMI panel. Each component uses a unique brazing profile that is developed and saved as a recipe. This recipe includes belt speed, zone temperatures, and nitrogen flow. The system software also provides features such as historical brazing data and maintenance scheduling.

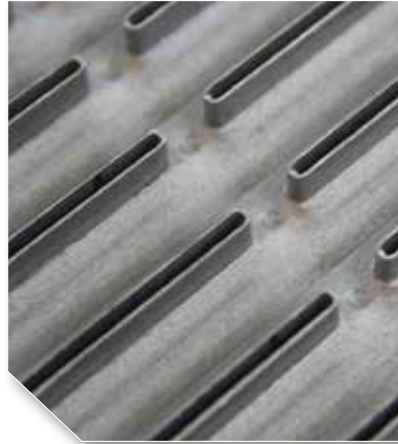
STAINLESS STEEL "HOTBOX" DATA RECORDER

Brazing profiles are created for each core based on the total mass weight. The furnace temperatures and belt speeds are adjusted based on feedback from a data recorder. The hotbox ensures a quality braze profile for each core.



QUALITY CONTROL

Every part of a core is important, but the quality of the headers is an absolute must. The tube slots must be punched with a maximum of .002" clearance for a precise tube fit. While others use single sided clad material, DeWitts™ uses double sided clad for all the headers. This provides a fillet joint around the tube on both sides of the header, doubling the strength of the joint. You simply cannot build a better, stronger core. The use of .080 double clad material and extruded side channels provides a core strong enough to handle over one million pressure cycles, without a tube-to-header joint failure. DeWitts™ is ISO 9001:2015 certified and committed to producing only the highest quality products.



MARKETS & APPLICATIONS

- HEATER CORES
- TRANSMISSION COOLERS
- CHARGE AIR COOLERS
- RADIATORS
- HVAC
- OIL COOLERS
- CONDENSERS



AUTOMOTIVE



HEAVY DUTY TRUCKS



MOBILE



AGRICULTURE



FLEET VEHICLES



ATV



TRANSPORTATION



OFF ROAD

1955-60 CORVETTE



This aluminum radiator is the ONLY true “Direct Fit®” radiator on the market. It features the correct “press formed” aluminum tanks and factory type side brackets. It doubles the cooling capacity and weighs only 12lbs.



Manual Transmission Radiator	Model: 32-1139055M
Automatic Transmission Radiator	Model: 32-1139055A
+ Black Ice Coating	Model: 32-1239055M
+ SPAL 16” Fan (2360 cfm 21.6 amps)*	Model: 32-4139055M
+ Low Profile SPAL 16” Fan (1610 cfm @ 11 amps)	Model: 32-4139058M

**Due to the fan motor size, there may be interference with the factory suspension on 1958-60 model Corvettes. This package should only be used on cars with alternator conversions.*

1961-62 CORVETTE



Features a double row (1.0” tubes) core and the same cast aluminum necks used on the original radiator. It will fit into the core support without any modifications and it offers 25% more cooling than replacement copper/brass radiators.



Manual Transmission Radiator	Model: 32-1139061M
Automatic Transmission Radiator	Model: 32-1139061A
+ Black Ice Coating	Model: 32-1239061M
+ SPAL 16” Fan	Model: 32-4139061M

1963-72 CORVETTE



(See Application Notes)

This double row aluminum radiator is offered as an alternate to the original plate type (941) radiator. While its BTU rating (4100) is slightly less than the original, it is still 25% better than the copper replacement radiators. The design uses many of the same original parts used in the factory design, including the inlet and outlet tank.



Manual Transmission Radiator	Model: 32-1139063M
Automatic Transmission Radiator (Option for '63-'67 only.)	Model: 32-1139063A
+ Black Ice Coating	Model: 32-1239063M
+ 1-1/4” Wide Tubes*	Model: 32-1149063M
+ SPAL Fan (2360 cfm 21.6 amps)	Model: 32-4139063M
+ Black SPAL Fan (2360 cfm 21.6 amps)	Model: 32-4239063M

See SPAL category model SP004 for add-on fan kit on page 35.

**A great choice for cars with AC and modified motors.*

Notes: this “pin mount” type radiator was used on all '63-'67 SB Corvettes. It was also used on '68-'72 SB base cars with no automatic transmission, AC, or optional engines.

1965 BIG BLOCK CORVETTE

Replacement aluminum radiator for 1965 big block engines.
Also fits '67-'69 L88 cars.



Manual Transmission Radiator

Model: **32-1139065M**

1966-68 BIG BLOCK CORVETTE

(Also fits: '68 SB with Auto or AC)



DeWitts™ manufactures a high performance two row aluminum radiator that is a "Direct Fit®" for all '66-'68 big block Corvettes. **This model also fits 1968 small block engines that were equipped with automatic trans or AC.** This radiator will provide 25% more cooling than the stock four row copper radiator. It features the same size and configuration inlet and outlet, factory type channels, and press formed end tanks. No modifications are required. Models 32-1139066M & 32-1139066A are our standard design core with two 1" tubes and serpentine fins at 15 FPI.



Manual Transmission Radiator

Model: **32-1139066M**

Automatic Transmission Radiator

Model: **32-1139066A**

+ Black Ice Coating / Manual

Model: **32-1239066M**

+ Black Ice Coating / Automatic

Model: **32-1239066A**

SPECIAL 23.5" Aluminum radiator / SPAL Dual 11" Fan

Model: **32-4139066M**

SPECIAL 23.5" Aluminum radiator / SPAL Dual 11" Fan / Black Ice Coating

Model: **32-4239066M**

HP Series / 1.25" Tubes

Model: **32-1149066M**

HP Series / 1.25" Tubes / Black Ice Coating

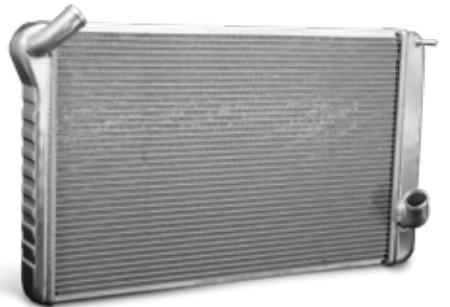
Model: **32-1249066M**

See SPAL category model SP004 for add-on fan kit on page 35.

1969-72 BIG BLOCK CORVETTE



This is a true "Direct Fit®" aluminum radiator for 1969-72 big block engine Corvettes. Unlike other "universal" aftermarket radiators, this model features the correct 27.5" core, factory type upper channels, stock hose connections, and press formed tanks. It is also epoxy free. No cutting or modifying is required. This radiator features two rows of one inch wide tubes and will provide 30% more cooling than an equal size four row copper radiator.



Manual Transmission Radiator

Model: **32-1139069M**

Automatic Transmission Radiator

Model: **32-1139069A**

+ Black Ice Coating / Manual

Model: **32-1239069M**

+ Black Ice Coating / Automatic

Model: **32-1239069A**

+ Dual SPAL Fan SP460 / Manual

Model: **32-4139069M**

+ Dual SPAL Fan SP460 / Automatic

Model: **32-4139069A**

1969-72 SMALL BLOCK CORVETTE



This radiator is for all 1969-72 350 small block Corvettes with automatic transmission or AC. This “Direct Fit™” aluminum radiator features factory type press formed end tanks, dual row core, serpentine fins, and the factory type upper and lower channels. This radiator will provide 30% more cooling than the stock copper unit with half the weight and is epoxy free. It will fit into the stock core support and uses the original factory hoses. Absolutely no modifications are required. **(Also fits LT1 & L46 option cars.)**

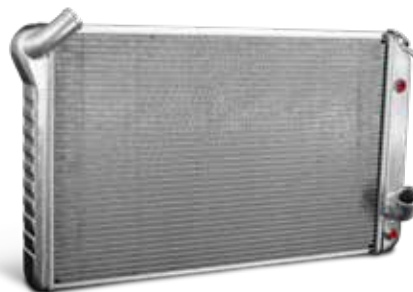


Manual Transmission Radiator	Model: 32-1139070M
Automatic Transmission Radiator	Model: 32-1139070A
+ Black Ice Coating / Manual	Model: 32-1239070M
+ Black Ice Coating / Automatic	Model: 32-1239070A
+ Dual SPAL Fan SP460 / Manual	Model: 32-4139070M
+ Dual SPAL Fan SP460 / Automatic	Model: 32-4139070A

1973-76 CORVETTE



This “Direct Fit™” aluminum radiator features factory type press formed end tanks, dual row core, serpentine fins, and the factory type upper and lower channels. This radiator will provide 30% more cooling than the stock copper unit with half the weight and is epoxy free. It will fit into the stock core support and uses the original factory hoses. Note: Late 1976 cars may require the 1977 style radiator. Call for recommendation.

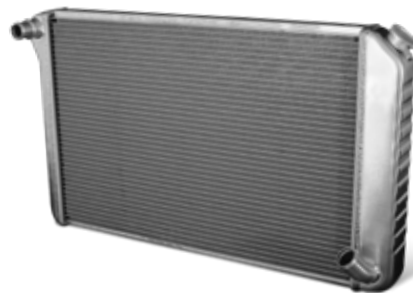


Manual Transmission Radiator	Model: 32-1139073M
Automatic Transmission Radiator	Model: 32-1139073A
+ Black Ice Coating / Manual	Model: 32-1239073M
+ Black Ice Coating / Automatic	Model: 32-1239073A
+ Dual SPAL Fan SP460 / Manual	Model: 32-4139073M
+ Dual SPAL Fan SP460 / Automatic	Model: 32-4139073A

1977-82 CORVETTE



This “Direct Fit™” aluminum radiator features factory type press formed end tanks, dual row core, serpentine fins, and the factory type upper and lower channels. This radiator will provide 30% more cooling than the stock copper unit with half the weight and is epoxy free. It will fit into the stock core support and uses the original factory hoses. Heavy duty rubber cushions are included. Fits all '77-'82 Corvettes with automatic and manual transmissions.



Manual Transmission Radiator	Model: 32-1139077M
Automatic Transmission Radiator	Model: 32-1139077A
+ Black Ice Coating / Manual	Model: 32-1239077M
+ Black Ice Coating / Automatic	Model: 32-1239077A
+ Dual SPAL Fan SP460 / Manual	Model: 32-4139077M
+ Dual SPAL Fan SP460 / Automatic	Model: 32-4139077A
+ HP Core - 2 Row 1.25" Tubes / Manual	Model: 32-1149077M
+ HP Core - 2 Row 1.25" Tubes / Automatic	Model: 32-1149077A

1984-89 CORVETTE



Features two rows of 1" tubes and press formed end tanks. This doubles the cooling capacity of the original single row units. This design eliminates failures due to cracked plastic end tanks and/or gasket leaks. This model fits both automatic transmission and 4 + 3 models. To simplify installation, custom mounting cushions are included. Note: 1984 & 1985 cars will require newer-style AC condenser.



Double Row Radiator / Automatic

Model: **32-1139084A**

The single row radiator features 1-1/2" tubes. This design increases cooling surfaces by 50% over the stock unit. This unit uses the same full size aluminum end tanks from our double row, increasing fluid capacity.

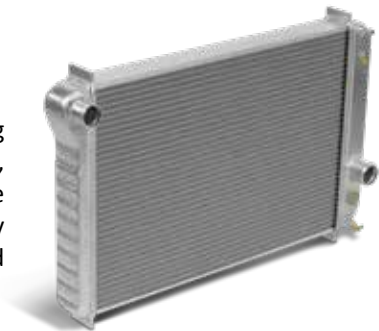
Single Row Radiator / Automatic

Model: **32-1129084A**

1990-96 CORVETTE



Features two rows of 1" tubes and press formed end tanks. This doubles the cooling capacity of the original single row units. This unit fits into the original mounting, however, GM did not allow any room for a thicker core and therefore it is impossible to make a true "Direct Fit®". The upper two rubber cushions must be trimmed slightly to accommodate the larger core. We include spacer plates and hardware so no shroud cutting is required.



Double Row Radiator / Automatic

Model: **32-1139090A**

Double Row Radiator / Manual

Model: **32-1139090M**

The single row radiator features 1-1/2" tubes. This design increases cooling surfaces by 50% over the stock unit. This unit uses the same full size aluminum end tanks from our double row, increasing fluid capacity.

Single Row Radiator / Automatic

Model: **32-1129090A**

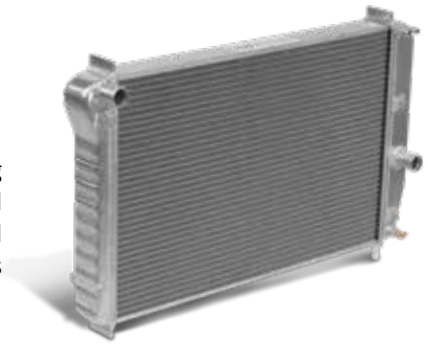
Single Row Radiator / Manual

Model: **32-1129090M**

C5 ALUMINUM RADIATOR



This high performance “Direct Fit®” aluminum radiator features two rows of 1” cooling tubes, doubling the cooling capacity of the factory single row. The press formed aluminum end tanks are TIG-welded to the core, eliminating failures due to cracked plastic end tanks and/or gasket leaks. This unit fits into the original mounting and has all the factory connections.



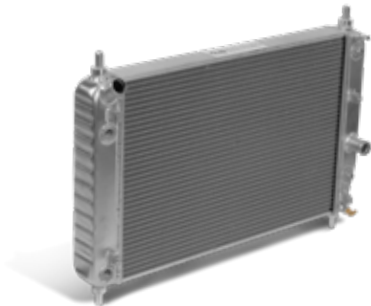
	1997-2004 Manual Transmission Radiator	Model: 32-1139097M
	1997-2000 Automatic Transmission Radiator	Model: 32-1139097A
	1997-2000 EOC / TOC Radiator	Model: 32-1139097B
	2001-2004 Automatic Transmission Radiator	Model: 32-1139101A
	2001-2004 EOC / TOC Radiator	Model: 32-1139101B
	EOC Radiator (Left Side Engine Oil Cooler)	Model: 32-1139097E
SHORT	1997-2004 Manual Transmission Radiator (See Note)	Model: 32-1139197M
SHORT	1997-2000 Automatic Transmission Radiator (See Note)	Model: 32-1139197A
SHORT	1997-2000 EOC / TOC Radiator (See Note)	Model: 32-1139197B
SHORT	EOC Radiator (Left Side Engine Oil Cooler) (See Note)	Model: 32-1139197E
SHORT	2001-2004 TOC Radiator (See Note)	Model: 32-1139111A
SHORT	2001-2004 EOC / TOC Radiator (See Note)	Model: 32-1139111B

Note: DeWitts™ offers custom “short” models to provide extra clearance to make room for supercharger packages.

C6 ALUMINUM RADIATOR



This “Direct Fit®” radiator features two rows of 1” tubes, which doubles the cooling capacity of a factory single row. Our exclusive “press formed” end tanks are hand TIG-welded by expert craftsman, eliminating the factory plastic tanks.



	Radiator With Dual Cooler (EOC & TOC)	Model: 32-1139105B
	No Cooler / NON-Z51 / Manual Transmission Only	Model: 32-1139105M
	Driver Side Oil Cooler (EOC) Radiator	Model: 32-1139105E
	Passenger Side Cooler (Automatics And All Z06 Options)	Model: 32-1139105A
	2009-2013 ZR1 Radiator	Model: 32-1139109Z
	2013 Z06, Z51, Grand Sport With Engine-mounted Oil Cooler	Model: 32-1139105Z
	2013 Corvette Combo Version With Engine-mounted Oil Cooler	Model: 32-4139105Z
SHORT	EOC & TOC Radiator	Model: 32-1139125B
SHORT	No Cooler / NON-Z51 / Manual Transmission Only (See Note)	Model: 32-1139125M
SHORT	EOC Radiator (See Note)	Model: 32-1139125E
SHORT	2005-2013 Z06/C6 Automatic Transmission Radiator (See Note)	Model: 32-1139125A
SHORT	2013 Z06, Z51, Grand Sport With Engine-mounted Oil Cooler	Model: 32-1139125Z
SHORT	2013 Corvette Combo Version With Engine-mounted Oil Cooler	Model: 32-4139125Z

Note: DeWitts™ offers custom “short” models to provide extra clearance to make room for supercharger packages.

C7 Z06 ALUMINUM RADIATOR



Upgrade your cooling system with our new 57mm double row aluminum radiator for all C7 Corvettes. This new "Direct Fit®" radiator features serpentine fins and special dimpled cooling tubes. These dimples create turbulence as coolant passes through the tube. Turbulent flow is a proven method to increase heat transfer over the standard laminar flow method. The thicker core increases tube-to-fin surface area and the all-aluminum construction eliminates plastic end tanks and gasket failures. The larger capacity end tanks hold one additional gallon of coolant to help dissipate heat.



All C7 & Z06 Direct Fit®

Model: **32-1139114M**

C7 Race Radiator Modification Required

Model: **32-1149114M**

Note: DeWitts™ now offers our HP Model (32-1149114M) 70mm double row aluminum radiator for extreme racing conditions. This radiator requires trimming both the hood duct and electric fan shroud for proper clearance.

C7 19" ELECTRIC FAN UPGRADE **NEW!**

Our new 19" brushless fan is simple to install and features "plug and play" wiring. No re-programming or splicing is required. This fan replaces the stock 14" 600 watt fan with an impressive 835 watt fan motor for more CFM when you need it. The custom aluminum shroud now covers 100% of the core face, utilizing all the radiator area, and it looks incredible when showing off the engine bay! The stock hood duct is eliminated for clearance.



All (Except 70mm radiator)

Model: **32-SP477**

With DeWitts 70mm radiator

Model: **32-SP478**

C7 TRANS/COOLANT COMBO COOLER **NEW!**

Maximize your cooling system and reduce faults by installing our new exclusive combo cooler. The factory location of the automatic transmission cooler has untapped potential for A8 Corvettes. DeWitts™ new combination cooler is custom designed to fit under the front fascia and mount in the same area as the automatic transmission cooler. By trimming a small portion of the radiator shroud we are able to fit a taller unit in this location and use the original mounting hardware. This package features a cooling section for A8 transmission fluid and a second section for engine coolant. This is a complete kit, that includes Direct Fit® aluminum lines for the transmission connections and 5/8" heater hoses.



C7 Trans/Coolant For A8 Models Only

Model: **32-TC**

C7 AUXILIARY RADIATOR **NEW!**

This new kit is for the manual transmission M7 models only. A secondary radiator under the front fascia will provide additional cooling for high performance applications without coolant faults. This radiator will require minor trimming to the interior duct and the lower deflector. Cutting instructions are included.



C7 Auxiliary Radiator For M7 Models Only

Model: **32-C7AUX**



C7 Z06 AIR INTAKE HEAT EXCHANGER

Reduce intake temperatures with this efficient heat exchanger. The system holds more fluid in the heat exchanger with increased tube-to-fin contact area. This allows the supercharger to be more efficient while in boost and cool down faster after high boost runs.

Heat Exchanger (Z06 Only) Model: **32-440**

Note: Removal of the front bumper and a car lift is required. DeWitts™ recommends contracting a professional service technician for installation.



C7 Z06 ENGINE OIL COOLING KIT

This "Air-to-Oil" type EOC kit is for all C7 Corvettes. This kit includes a custom two pass oil cooler that is designed to mount directly behind the grill opening. This kit replaces the factory Water-to-Oil cooler with a custom adapter and stainless steel braided oil lines. Detailed installation instructions are included.

(EOC) Kit Model: **32-8119001E**

CORVETTE RESTORATION RADIATORS

DeWitts™ exclusive Restoration Radiators™ are 100% exact reproductions for all 1960-1972 Corvettes. This "stacked plate" type radiator is the ultimate in performance and is brazed with today's state of the art techniques. Each radiator is uniquely date coded, to match your Corvette build date.



Model Year	GM Part#	Details	Model:
1960-1961	3157516	Flat Top Tank	32-940A
1960-1961	3151116	Top Tank With Ribs	32-940B
1961	3150916	Non-Painted / Bump Casting	32-943A
1961	3150916	Painted / Bump Casting	32-943B
1962	3150916	Flat Casting / Tag Dated	32-944A
1962	3150916	Flat Casting / Stamp Dated	32-944B
1965-1972	3155316	1" Wide Mount	32-941
1963-1964	3155316	2" Wide Mount	32-942
1965 396 & L88	3007436	2nd Design Curved Neck	32-955
1965	-	1965 / 396 Early Restoration	32-945

RESTORATION COPPER / BRASS RADIATORS

Model Year	Details	Model:
1966	'66 Big Block Corvette Copper/ Brass Radiator	32-BC66M
1967-1968	'67-'68 Big Block Corvette Copper/ Brass Radiator	32-BC67M



2004-07 & 2009-14 CADILLAC CTS-V

"Direct Fit®" aluminum high performance single row 1.5" core radiator. Single row radiator features 1.5" cooling tubes with 16 FPI. This design increases cooling surfaces by 50% over stock unit, and feature formed aluminum tanks, eliminating the stock plastic tanks.

2004-2007 Cadillac CTS-V

2009-2014 Cadillac CTS-V



Model: **32-1129124M**

Model: **32-1139126A**

1967-69 BIG BLOCK CAMARO



This is a true "Direct Fit®" aluminum radiator for 1967-69 Camaros with big block engines. Unlike other "universal" aftermarket radiators, this model features the factory type upper channels, stock hose connections, and press formed tanks. It is also epoxy free. No cutting or modifying is required. This radiator features two rows of 1" wide tubes and will provide 30% more cooling than an equal size four row copper radiator.



Manual Transmission Radiator

Model: **32-1139022M**

Automatic Transmission Radiator

Model: **32-1139022A**

+ Black Ice Coating / Manual

Model: **32-1239022M**

+ Black Ice Coating / Automatic

Model: **32-1239022A**

+ Dual SPAL Fan / Manual

Model: **32-4139022M**

+ Dual SPAL Fan / Automatic

Model: **32-4139022A**

+ Dual SPAL Fan / Manual / Black Ice Coating

Model: **32-4239022M**

+ Dual SPAL Fan / Automatic / Black Ice Coating

Model: **32-4239022A**

1967-69 SMALL BLOCK / Z28 CAMARO

This is a true "Direct Fit®" aluminum radiator for 1967-69 Camaros. Unlike other "universal" aftermarket radiators, this model features the factory type upper channels, stock hose connections, and press formed tanks. It is also epoxy free. No cutting or modifying is required. This radiator features two rows of 1" wide tubes and will provide 30% more cooling than an equal size four row copper radiator.



Manual Transmission Radiator

Model: **32-1139004M**

Automatic Transmission Radiator

Model: **32-1139004A**

+ Black Ice Coating / Manual

Model: **32-1239004M**

+ Black Ice Coating / Automatic

Model: **32-1239004A**

1970-81 CAMARO



This is a true “Direct Fit®” aluminum radiator for 1970-81 Camaros. Unlike other “universal” aftermarket radiators, this model features the factory type upper channels, stock hose connections, and press formed tanks. It is also epoxy free. No cutting or modifying is required. This radiator features two rows of 1” wide tubes and will provide 30% more cooling than an equal size four row copper radiator.



Manual Transmission Radiator	Model: 32-1139005M
Automatic Transmission Radiator	Model: 32-1139005A
+ Black Ice Coating / Manual	Model: 32-1239005M
+ Black Ice Coating / Automatic	Model: 32-1239005A
+ Dual SPAL Fan / Manual	Model: 32-4139005M
+ Dual SPAL Fan / Automatic	Model: 32-4139005A
+ Dual SPAL Fan / Manual / Black Ice Coating	Model: 32-4239005M
+ Dual SPAL Fan / Automatic / Black Ice Coating	Model: 32-4239005A

1982-92 CAMARO

This new high performance “Direct Fit®” aluminum radiator features two rows of 1” cooling tubes, doubling the cooling capacity of the factory single row. The press formed aluminum end tanks are TIG-welded to the core, eliminating failures due to cracked plastic end tanks and/or gasket leaks. This unit fits into the original mounting and has all the factory connections and an automatic transmission cooler with factory flare connections.



Manual Transmission Radiator	Model: 32-1139006M
Automatic Transmission Radiator	Model: 32-1139006A

1993-2002 CAMARO HIGH PERFORMANCE

This new high performance “Direct Fit®” aluminum radiator features two rows of 1” cooling tubes, doubling the cooling capacity of the factory single row. The press formed aluminum end tanks are TIG-welded to the core, eliminating failures due to cracked plastic end tanks and/or gasket leaks. This unit fits into the original mounting and has all the factory connections and an automatic transmission cooler with factory flare connections.



Manual Transmission Radiator 93-97 LT1 - No Coolant Sensor	Model: 32-1139007M
Automatic Transmission Radiator 93-97 LT1 - No Coolant Sensor	Model: 32-1139007A
Manual Transmission Radiator 98-02 LS1 With Low Coolant Sensor	Model: 32-1139027M
Automatic Transmission Radiator 98-02 LS1 With Low Coolant Sensor	Model: 32-1139027A

2010-11 CAMARO HIGH PERFORMANCE

This new high performance “Direct Fit®” aluminum radiator features two rows of 1” cooling tubes, doubling the cooling capacity of the factory single row. The formed aluminum end tanks are TIG-welded to the core, eliminating failures due to cracked plastic end tanks and/or gasket leaks. This unit fits into the original mounting. The factory connections, automatic transmission cooler with factory flare, stock fan shroud mounting and condenser are all in place for easy installation. Fits all 2010 & 2011 Camaros.



Automatic Transmission Radiator

Model: **32-1139008A**

2012-15 CAMARO HIGH PERFORMANCE

This new high performance “Direct Fit®” aluminum radiator features two rows of 1” cooling tubes, doubling the cooling capacity of the factory single row. The formed aluminum end tanks are TIG-welded to the core, eliminating failures due to cracked plastic end tanks and/or gasket leaks. This unit fits into the original mounting. The factory connections, automatic transmission cooler with factory flare, stock fan shroud mounting and condenser are all in place for easy installation. Fits all 2012-15 Camaros.



Automatic Transmission Radiator

Model: **32-1139009A**

1964-65 CHEVELLE

This radiator is a “Direct Fit®” for all 1964-65 Chevelles with small block engines and automatic or manual transmissions. Inlet and outlet are on the passenger side. This radiator features factory type press formed end tanks, dual row core, and serpentine fins. This radiator will provide 30% more cooling than the stock copper unit and half the weight. It is also epoxy free. It will fit into the stock core support and uses the original factory hoses.



Manual Transmission Radiator

Model: **32-1139001M**

Automatic Transmission Radiator (TOC)

Model: **32-1139001A**

+ Black Ice Coating / Manual

Model: **32-1239001M**

+ Black Ice Coating / Automatic

Model: **32-1239001A**

+ Dual SPAL Fan / Manual

Model: **32-4139001M**

+ Dual SPAL Fan / Automatic

Model: **32-4139001A**

+ Dual SPAL Fan / Manual / Black Ice Coating

Model: **32-4239001M**

+ Dual SPAL Fan / Automatic / Black Ice Coating

Model: **32-4239001A**

1966-67 CHEVELLE



This radiator is a “Direct Fit®” for all 1966-67 “A” body Chevelles with BB engines and automatic or manual transmissions. Also fits SB Chevelles with AC. Features included are factory type press formed end tanks, dual row core, and serpentine fins. This radiator will provide 30% more cooling than the stock copper unit, with half the weight. It is also epoxy free. It will fit into the stock core support and it uses the original factory hoses.

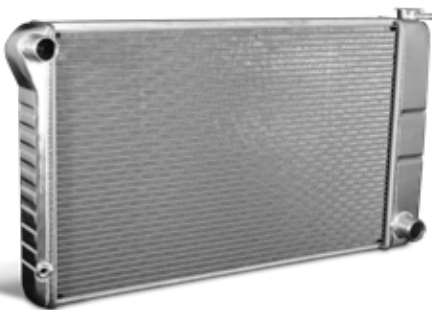


Manual Transmission Radiator	<i>Model:</i> 32-1139002M
Automatic Transmission Radiator (TOC)	<i>Model:</i> 32-1139002A
+ Black Ice Coating / Manual	<i>Model:</i> 32-1239002M
+ Black Ice Coating / Automatic	<i>Model:</i> 32-1239002A
+ Dual SPAL Fan 2760CFM / Manual	<i>Model:</i> 32-4139002M
+ Dual SPAL Fan 2760CFM / Automatic	<i>Model:</i> 32-4139002A
+ Dual SPAL Fan 2760CFM / Manual / Black Ice Coating	<i>Model:</i> 32-4239002M
+ Dual SPAL Fan 2760CFM / Automatic / Black Ice Coating	<i>Model:</i> 32-4239002A

1968-72 CHEVELLE



This radiator is a “Direct Fit®” for all 1968-72 BB and manual or automatic transmissions. Also fits SB Chevelles with AC. This radiator features factory type press formed end tanks, dual row core, serpentine fins, and the factory type upper and lower channels. This radiator will provide 30% more cooling than the stock copper unit and half the weight. It is also epoxy free. It will fit into the stock core support and it uses the original factory hoses. (Features an internal transmission cooler for automatics.)



Manual Transmission Radiator	<i>Model:</i> 32-1139003M
Automatic Transmission Radiator	<i>Model:</i> 32-1139003A
+ Black Ice Coating / Manual	<i>Model:</i> 32-1239003M
+ Black Ice Coating / Automatic	<i>Model:</i> 32-1239003A
+ Dual SPAL Fan / Manual	<i>Model:</i> 32-4139003M
+ Dual SPAL Fan / Automatic	<i>Model:</i> 32-4139003A
+ Dual SPAL Fan / Manual / Black Ice Coating	<i>Model:</i> 32-4239003M
+ Dual SPAL Fan / Automatic / Black Ice Coating	<i>Model:</i> 32-4239003A
+ High Performance / Dual SPAL Fan	<i>Model:</i> 32-4149003M

1955-57 V8 POSITION CHEVY

High performance two row aluminum radiator for small block and big block engines. Eight cylinder mount - to fit all factory V8 cars. Bare aluminum finish. Automatic option comes with factory style transmission cooler with factory line connections in the stock locations.



Manual Transmission Radiator

Model: **32-1139012M**

Automatic Transmission Radiator

Model: **32-1139012A**

+ Black Ice Coating / Manual

Model: **32-1239012M**

+ Black Ice Coating / Automatic

Model: **32-1239012A**



1955-57 6 CYLINDER POSITION CHEVY

High performance two row aluminum radiator for small block and big block engines. Six cylinder mount positioned in front of the core support with the factory style bump in tank, so the hose goes over the core support. With the Black Ice option this radiator look and fits like the original radiator. Automatic option comes with factory style transmission cooler with factory line connections in the stock locations.



Automatic Transmission Radiator

Model: **32-1139013A**

Manual Transmission Radiator

Model: **32-1139013M**

+ Black Ice Coating / Automatic

Model: **32-1239013A**

+ Black Ice Coating / Manual

Model: **32-1239013M**



1968-72 CHEVY NOVA

This radiator is a “Direct Fit®” for all 1968-72 Chevy Nova with automatic or manual transmissions (for BB, see Note). Also fits base model SB Chevelles. This radiator features factory type press formed end tanks, dual row core, serpentine fins, and the factory type upper and lower channels. This radiator will provide 30% more cooling than the stock copper unit and half the weight. It is also epoxy free. It will fit into the stock core support and it uses the original factory hoses.



Manual Transmission Radiator

Model: **32-1139011M**

Automatic Transmission Radiator

Model: **32-1139011A**

+ Black Ice Coating / Manual

Model: **32-1239011M**

+ Black Ice Coating / Automatic

Model: **32-1239011A**

+ 16” SPAL Fan 2360CFM / Manual

Model: **32-4139011M**

+ 16” SPAL Fan 2360CFM / Automatic

Model: **32-4139011A**

Note: For 68-72 BB Nova, see page 13 (models 32-1139022M or 32-1139022A).

1978-87 CHEVY MONTE CARLO G-BODY

This radiator is a “Direct Fit®” for all 1978-87 G-Body Monte Carlos with automatic or manual transmissions. This radiator features factory type press formed end tanks, dual row core, serpentine fins, and the factory type upper and lower channels. This radiator will provide 30% more cooling than the stock copper unit and half the weight. It is also epoxy free. It will fit into the stock core support and it uses the original factory hoses.



Manual Transmission Radiator

Model: **32-1139005M**

Automatic Transmission Radiator

Model: **32-1139005A**

+ Black Ice Coating / Manual

Model: **32-1239005M**

+ Black Ice Coating / Automatic

Model: **32-1239005A**

+ Dual SPAL Fan / Manual

Model: **32-4139005M**

+ Dual SPAL Fan / Automatic

Model: **32-4139005A**

+ Dual SPAL Fan / Manual / Black Ice Coating

Model: **32-4239005M**

+ Dual SPAL Fan / Automatic / Black Ice Coating

Model: **32-4239005A**

CAMARO 1967-69 BB **LSX** MODIFIED

This radiator is a “custom package” for all 1967-69 Camaros with LSX engines with manual or automatic transmissions. Inlet and outlet are on the passenger side. This radiator features factory type press formed end tanks, dual row core, and serpentine fins. This radiator will provide 30% more cooling than the stock copper unit and half the weight. Features dual 11” SPAL fans with 2780 CFM. It is epoxy free and will fit into the stock core support. Radiator comes with 2 rows of 1” tubes, dual fans, billet DeWitts™ cap, temp sensor in the radiator, steam line, relays, and wiring.



Manual Transmission Radiator

Model: **32-6139022M**

Automatic Transmission Radiator

Model: **32-6139022A**

+ Black Ice Coating / Manual

Model: **32-6239022M**

+ Black Ice Coating / Automatic

Model: **32-6239022A**

CAMARO 1970-81 ALL **LSX** MODIFIED

This radiator is a “custom package” for all 1970-81 Camaros with LSX engines with manual or automatic transmissions. Inlet and outlet are on the passenger side. This radiator features factory type press formed end tanks, dual row core, and serpentine fins. This radiator will provide 30% more cooling than the stock copper unit and half the weight. Features dual 11” SPAL fans with 2780 CFM. It is epoxy free and will fit into the stock core support. Radiator comes with 2 rows of 1” tubes, dual fans, billet DeWitts™ cap, temp sensor in the radiator, steam line, relays, and wiring.



Manual Transmission Radiator

Model: **32-6139005M**

Automatic Transmission Radiator

Model: **32-6139005A**

+ Black Ice Coating / Manual

Model: **32-6239005M**

+ Black Ice Coating / Automatic

Model: **32-6239005A**



CHEVELLE 1964-67 ALL **LSX** MODIFIED

This radiator is a “custom package” for all 1964-67 Chevelles with LSX engines with manual or automatic transmissions. Inlet and outlet are on the passenger side. This radiator features factory type press formed end tanks, dual row core, and serpentine fins. This radiator will provide 30% more cooling than the stock copper unit and half the weight. Features dual 12” Flex-A-Lite fans for a low profile clearance, great for serpentine belts systems. It is epoxy free and will fit into the stock core support. Radiator comes with 2 rows of 1” tubes, dual fans, billet DeWitts™ cap, temp sensor in the radiator, steam line, relays, and wiring.



Manual Transmission Radiator

Model: **32-6139002M**

Automatic Transmission Radiator

Model: **32-6139002A**

+ Black Ice Coating / Manual

Model: **32-6239002M**

+ Black Ice Coating / Automatic

Model: **32-6239002A**



CHEVELLE 1968-72 ALL **LSX** MODIFIED

This radiator is a “custom package” for all 1968-72 Chevelles with LSX engines with manual transmission. Inlet and outlet are on the passenger side. This radiator features factory type press formed end tanks, dual row core, and serpentine fins. This radiator will provide 30% more cooling than the stock copper unit and half the weight. Features dual 11” SPAL fans with 2780 CFM. It is epoxy free and will fit into the stock core support. Radiator comes with 2 rows of 1” tubes, dual fans, billet DeWitts™ cap, temp sensor in the radiator, steam line, relays, and wiring.



Manual Transmission Radiator

Model: **32-6139003M**

Automatic Transmission Radiator

Model: **32-6139003A**

+ Black Ice Coating / Manual

Model: **32-6239003M**

+ Black Ice Coating / Automatic

Model: **32-6239003A**

IMPALA 1959-64 **LSX** MODIFIED



This is a custom LSX series radiator for all 1959-62 Impalas with manual transmission. Inlet and outlet are on the passenger side. This radiator features factory type press formed end tanks, dual row core, and serpentine fins. This radiator will provide 30% more cooling than the stock copper unit and half the weight. It is also epoxy free and will fit into the stock core support and it uses the original factory hoses.

Manual Transmission Radiator*	Model: 32-6139014M
Automatic Transmission Radiator*	Model: 32-6139014A
+ Black Ice Coating / Manual*	Model: 32-6239014M
+ Black Ice Coating / Automatic*	Model: 32-6239014A
Manual Transmission Radiator	Model: 32-6139015M
Automatic Transmission Radiator	Model: 32-6139015A
+ Black Ice Coating / Manual	Model: 32-6239015M
+ Black Ice Coating / Automatic	Model: 32-6239015A

* Lower tank notch for new power steering gear box.



CHEVY BEL AIR / TRI-5 **LSX**

STANDARD V6 MOUNT POSITION This radiator is a “custom package” for all 1955-57 Chevy Tri-5 Bel Air with LSX engines with manual and automatic transmissions. Inlet and outlet are in stock position with LS sized tubing. This radiator features factory type press formed end tanks, dual row core, and serpentine fins. This radiator will provide 30% more cooling than the stock copper unit and half the weight. Features single 16” SPAL high performance fan. It is epoxy free and will fit into the stock core support. Radiator comes with 2 rows of 1” tubes, SPAL 16” fan, billet DeWitts™ cap, temp sensor in the radiator, steam line, relay, and wiring.



Manual Transmission Radiator	Model: 32-6139013M
Automatic Transmission Radiator	Model: 32-6139013A
+ Black Ice Coating / Manual	Model: 32-6239013M
+ Black Ice Coating / Automatic	Model: 32-6239013A

CHEVY C10 TRUCK 1963-66 **LSX** MODIFIED

This radiator is a “custom package” for all 1963-66 C10 Chevy Trucks with LSX engines with manual and automatic transmissions. Inlet and outlet are on the passenger side. This radiator features factory type press formed end tanks, dual row core, and serpentine fins. This radiator will provide 30% more cooling than the stock copper unit and half the weight. Features dual 11” SPAL fans with 2780 CFM. It is epoxy free and will fit into the stock core support. Radiator comes with 2 rows of 1” tubes, dual fans, billet DeWitts™ cap, temp sensor in the radiator, steam line, relays, and wiring.



Manual Transmission Radiator

Model: **32-6139017M**

Automatic Transmission Radiator (TOC)

Model: **32-6139017A**

+ Black Ice Coating / Manual

Model: **32-6239017M**

+ Black Ice Coating / Automatic

Model: **32-6239017A**

CHEVY C10 TRUCK/BLAZER 1967-72 **LSX** MODIFIED

This radiator is a “custom package” for all 1967-72 C10 Trucks/Blazer with LSX engines with manual transmission. Inlet and outlet are on the passenger side. This radiator features factory type press formed end tanks, 18.5" dual row core, and serpentine fins. This radiator will provide 30% more cooling than the stock copper unit and half the weight. Features dual 11” SPAL fans with 2780 CFM. It is epoxy free and will fit into the stock core support. Radiator comes with 2 rows of 1” tubes, dual fans, billet DeWitts™ cap, temp sensor in the radiator, steam line, relays, and wiring.



Manual Transmission Radiator

Model: **32-6139018M**

Automatic Transmission Radiator (TOC)

Model: **32-6139018A**

+ Black Ice Coating / Manual

Model: **32-6239018M**

+ Black Ice Coating / Automatic

Model: **32-6239018A**

CHEVY C10 TRUCK/BLAZER 1973-87 **LSX** MODIFIED

This radiator is a “custom package” for all 1973-87 C10 Trucks/Blazer with LSX engines with manual transmission. Inlet and outlet are on the passenger side. This radiator features factory type press formed end tanks, 20.5" dual row core, and serpentine fins. This radiator will provide 30% more cooling than the stock copper unit and half the weight. Features dual 11” SPAL fans with 2780 CFM. It is epoxy free and will fit into the stock core support. Radiator comes with 2 rows of 1” tubes, dual fans, billet DeWitts™ cap, temp sensor in the radiator, steam line, relays, and wiring.



Manual Transmission Radiator

Model: **32-6139019M**

Automatic Transmission Radiator (TOC)

Model: **32-6139019A**

+ Black Ice Coating / Manual

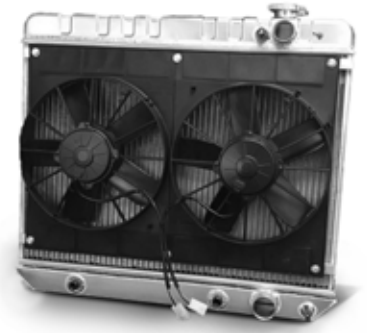
Model: **32-6239019M**

+ Black Ice Coating / Automatic

Model: **32-6239019A**

CHEVY NOVA / CHEVY II 1962-67 **LSX** MOD.

This radiator is a “custom package” for all 1962-67 Chevy II, Nova, with LSX engines with manual or automatic transmissions. Inlet and outlet are on the passenger side. This radiator features factory type press formed end tanks, dual row core, and serpentine fins. This radiator will provide 30% more cooling than the stock copper unit and half the weight. Features dual 11” SPAL fans with 2780 CFM. It is epoxy free and will fit into the stock core support. Radiator comes with 2 rows of 1” tubes, dual fans, billet DeWitts™ cap, temp sensor in the radiator, steam line, relays, and wiring.



Manual Transmission Radiator

Model: **32-6139010M**

Automatic Transmission Radiator

Model: **32-6139010A**

+ Black Ice Coating / Manual

Model: **32-6239010M**

+ Black Ice Coating / Automatic

Model: **32-6239010A**



CORVETTE 1955-60 **LSX** MODIFIED

This radiator is a “custom package” for all 1955-60 Corvettes with LSX engines with manual or automatic transmissions. Inlet and outlet are on the passenger side, filler neck moved to the driver side. This radiator features factory type press formed end tanks, dual row core, and serpentine fins. This radiator will provide 40% more cooling over the stock copper radiator. Features single 16” SPAL high performance fan. It is epoxy free and will fit into the stock core support. Radiator comes with 2 rows of 1” tubes, SPAL fan, billet DeWitts™ cap, temp sensor in the radiator, steam line, relay, and wiring.



Manual Transmission Radiator

Model: **32-6139055M**

Automatic Transmission Radiator

Model: **32-6139055A**

+ Black Ice Coating / Manual

Model: **32-6239055M**

+ Black Ice Coating / Automatic

Model: **32-6239055A**

CORVETTE 1961-62 **LSX** MODIFIED

This radiator is a “custom package” for all 1961-62 Corvettes with LSX engines with manual or automatic transmissions. Inlet and outlet are on the passenger side, filler neck, stem line, and temperature switch on passenger side. This radiator features formed end tanks, dual row core, and serpentine fins. This radiator will provide 40% more cooling over the stock copper radiator. Features single 16” SPAL high performance fan. It is epoxy free and will fit into the stock core support. Radiator comes with 2 rows of 1” tubes, SPAL fan, billet DeWitts™ cap, temp sensor in the radiator, steam line, relay, and wiring. This model has a filler neck on the radiator, which eliminates the stock Harrison overflow tank.



Manual Transmission Radiator

Model: **32-6139061M**

Automatic Transmission Radiator

Model: **32-6139061A**

+ Black Ice Coating / Manual

Model: **32-6239061M**

+ Black Ice Coating / Automatic

Model: **32-6239061A**

CORVETTE 1963-65 **LSX** MODIFIED

This radiator is custom made to simplify a LSX series engine conversion on 1963-65 Corvettes. First, we moved the inlet and outlet to the passenger side. These connections are resized to match the ports on the LSX engine. Second, we added a filler neck for a direct mounted radiator cap, which eliminates the need for a separate surge tank. We even added a connection for the steam line. This radiator is designed to fit the original small block (pin mount) core support and it will eliminate the stock upper mounting bracket. This larger package will fill 100% of the core support opening with functioning core area while the end tanks are on each side behind the support. Pre-mounted to the radiator are SPAL dual 11” electric fans, providing 2780 CFM air flow. This will eliminate the factory fan and fan shroud. The fans will be controlled via a 195on/175off temperature switch, which we mount inside the end tank. Wiring harnesses, relays and wiring instructions are also included.



Manual Transmission Radiator

Model: **32-6139024M**

Automatic Transmission Radiator

Model: **32-6139024A**

+ Black Ice Coating / Manual

Model: **32-6239024M**

+ Black Ice Coating / Automatic

Model: **32-6239024A**

Note: The horn relay and voltage regulator must be relocated on 1963 models.

CORVETTE 1963-72 **LSX** MODIFIED

This radiator is a “custom package” for all 1963-72 Corvettes with LSX engines with manual and automatic transmissions. This radiator is made to fit the original SB core support. The radiator features pin mounts on the bottom and a loop on the top middle of radiator. Inlet and outlet are on the passenger side, filler neck, stem line, and temperature switch on passenger side. This radiator features formed end tanks, dual row core, and serpentine fins. This radiator will provide 40% more cooling over the stock copper radiator. Features a single 16” SPAL high performance fan. It is epoxy free and will fit into the stock core support. Radiator comes with 2 rows of 1” tubes, SPAL fan, billet DeWitts™ cap, temp sensor in the radiator, steam line, relay, and wiring. This model has a filler neck on the radiator, which eliminates the stock Harrison overflow tank.



Manual Transmission Radiator

Model: **32-6139063M**

Automatic Transmission Radiator

Model: **32-6139063A**

+ Black Ice Coating / Manual

Model: **32-6239063M**

+ Black Ice Coating / Automatic

Model: **32-6239063A**



CORVETTE 1966-67 SB **LSX** MODIFIED

This radiator is a “custom package” for all 1966-67 Corvettes with LSX engines. Inlet and outlet are on the passenger side. This radiator is designed to fit the original small block core support. This radiator features press formed end tanks, dual row core, and serpentine fins. Features dual 11” SPAL fans with 2780 CFM, your best choice for cars with A/C. We put a filler neck on the top of the radiator, passenger side, that eliminates the need for the factory Harrison overflow tank. Radiator comes with 2 rows of 1” tubes, SPAL fan, billet DeWitts™ cap, temp sensor in the radiator, steam line, relay, and wiring.



Manual Transmission Radiator

Model: **32-6139025M**

Automatic Transmission Radiator

Model: **32-6139025A**

+ Black Ice Coating / Manual

Model: **32-6239025M**

+ Black Ice Coating / Automatic

Model: **32-6239025A**

CORVETTE 1966-68 BB **LSX** MODIFIED

This radiator is a “custom package” for all 1966-68 BB Corvettes with LSX engines. Inlet and outlet are on the passenger side. This radiator features factory type press formed end tanks, dual row core, and serpentine fins. This radiator will provide 30% more cooling than the stock copper unit and half the weight. Features dual 11” SPAL fans with 2780 CFM. It is epoxy free and will fit into the stock core support. Radiator comes with 2 rows of 1” tubes, SPAL fan, billet DeWitts™ cap, temp sensor in the radiator, steam line, relay, and wiring.



Manual Transmission Radiator

Model: **32-6139066M**

Automatic Transmission Radiator

Model: **32-6139066A**

+ Black Ice Coating / Manual

Model: **32-6239066M**

+ Black Ice Coating / Automatic

Model: **32-6239066A**



CORVETTE 1969-72 LSX MODIFIED

This is a custom LSX engine conversion radiator for all 1969-72 Corvettes with 26" core support and manual transmission. Inlet and outlet are on the passenger side and sized to match the LSX engine. This radiator features factory type press formed end tanks, dual row core, and serpentine fins. This radiator will provide 30% more cooling than the stock copper unit and half the weight. It is also epoxy free.



Manual Transmission Radiator

Model: **32-6139070M**

Automatic Transmission Radiator

Model: **32-6139070A**

+ Black Ice Coating / Manual

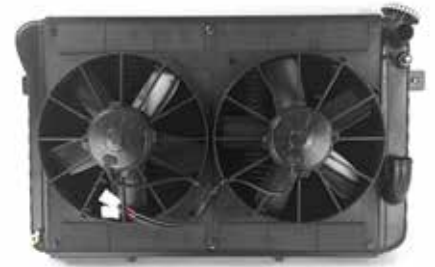
Model: **32-6239070M**

+ Black Ice Coating / Automatic

Model: **32-6239070A**

CORVETTE 1969-1972 SB LSX MODIFIED

This radiator is a "custom package" for all 1969-72 Corvettes with LSX engines. Inlet and outlet are on the passenger side. This radiator is designed to fit the original small block core support. It has the pin mounts on the bottom and two small tabs on the front side that eliminates the need for the bracket on the top of the radiator. This radiator features press formed end tanks, dual row core, and serpentine fins. It features Dual 11" SPAL fans with 2780 CFM, the best choice for cars with AC. We put a filler neck on the top of the radiator, passenger side, which eliminates the need for the factory Harrison overflow tank. Radiator comes with 2 rows of 1" tubes, dual fans, billet DeWitts™ cap, temp sensor in the radiator, stem line, relays, and wiring.



Manual Transmission Radiator

Model: **32-6139026M**

Automatic Transmission Radiator

Model: **32-6139026A**

+ Black Ice Coating / Manual

Model: **32-6239026M**

+ Black Ice Coating / Automatic

Model: **32-6239026A**

Note: Model: 32-6139026M (Natural/Manual) is for 1969-72 small block base motor, no air, no auto. Used with the pin mount radiator core support and Harrison overflow tank. If your car has air, auto, and higher HP, use model 32-6139070M.

CORVETTE 1969-72 BB / 1973-76 ALL LSX MODIFIED

This radiator is a "custom package" for all 1969-72 BB Corvette and all 1973-76 Corvettes with manual or automatic transmissions. Inlet and outlet are on the passenger side. This radiator features factory type press formed end tanks, dual row core, and serpentine fins. This radiator will provide 30% more cooling than the stock copper unit and half the weight. Features dual 11" SPAL fans with 2780 CFM. It is epoxy free and will fit into the stock core support. Radiator comes with 2 rows of 1" tubes, SPAL fan, billet DeWitts™ cap, temp sensor in the radiator, steam line, relay, and wiring.



Manual Transmission Radiator

Model: **32-6139073M**

Automatic Transmission Radiator

Model: **32-6139073A**

+ Black Ice Coating / Manual

Model: **32-6239073M**

+ Black Ice Coating / Automatic

Model: **32-6239073A**

CORVETTE 1977-82 **LSX** MODIFIED

This radiator is a “custom package” for all 1977-82 Corvette LSX models with manual or automatic transmissions. Inlet and outlet are on the passenger side. This radiator features factory type press formed end tanks, dual row core, and serpentine fins. This radiator will provide 30% more cooling than the stock copper unit and half the weight. Features dual 11” SPAL fans with 2780 CFM. It is epoxy free and will fit into the stock core support. Radiator comes with 2 rows of 1” tubes, SPAL fan, billet DeWitts™ cap, temp sensor in the radiator, steam line, relay, and wiring.



Manual Transmission Radiator

Model: **32-6139077M**

Automatic Transmission Radiator

Model: **32-6139077A**

+ Black Ice Coating / Manual

Model: **32-6239077M**

+ Black Ice Coating / Automatic

Model: **32-6239077A**



MUSTANG 1964-66



This radiator features two rows of 1" tubes and serpentine fins at 15 fins per inch. Connections are at the top right and bottom right. Available for manual or automatic transmissions.



Double Row Radiator / Manual

Model: **32-1138003M**

Double Row Radiator / Automatic

Model: **32-1138003A**

+ 16" SPAL Fan 1700CFM / Double Row Radiator / Manual

Model: **32-4138003M**

+ 16" SPAL Fan 1700CFM / Double Row Radiator / Automatic

Model: **32-4138003A**

+ Black Ice Coating Double Row Radiator / Manual

Model: **32-1238003M**

+ Black Ice Coating Double Row Radiator / Automatic

Model: **32-1238003A**



MUSTANG 1967 (289)

This radiator features two rows of 1" tubes and serpentine fin at 15 fins per inch. Connections are at the top right and bottom right. Used on Mach 1 and also fits 1967-70 with 390/427/428 and 1970 302/351 Mustang and Cougar with HD cooling. Available for manual or automatic transmissions.



Double Row Radiator / Manual

Model: **32-1138004M**

Double Row Radiator / Automatic

Model: **32-1138004A**

1968-70 MUSTANG

This radiator features press formed tanks similar to the original brass/copper unit. It has two rows of 1" tubes and serpentine fins at 15 fins per inch. The hose connection locations vary per application. Note: Upper tank is formed from original 4-row copper brass tank and may require the larger upper bracket. Check your vehicle's configuration first and then choose the correction application from the list below.



Manual Transmission Radiator	<i>Top Left/Bottom Right</i>	Model: 32-1138005M
Automatic Transmission Radiator	<i>Top Left/Bottom Right</i>	Model: 32-1138005A
+ Black Ice Coating / Manual	<i>Top Left/Bottom Right</i>	Model: 32-1238005M
+ Black Ice Coating / Automatic	<i>Top Left/Bottom Right</i>	Model: 32-1238005A
Manual Transmission Radiator	<i>Top Right/Bottom Left</i>	Model: 32-1138006M
Automatic Transmission Radiator	<i>Top Right/Bottom Left</i>	Model: 32-1138006A
+ Black Ice Coating / Manual	<i>Top Right/Bottom Left</i>	Model: 32-1238006M
+ Black Ice Coating / Automatic	<i>Top Right/Bottom Left</i>	Model: 32-1238006A
Manual Transmission Radiator	<i>Top Right/Bottom Right</i>	Model: 32-1138007M
Automatic Transmission Radiator	<i>Top Right/Bottom Right</i>	Model: 32-1138007A
+ Black Ice Coating / Manual	<i>Top Right/Bottom Right</i>	Model: 32-1238007M
+ Black Ice Coating / Automatic	<i>Top Right/Bottom Right</i>	Model: 32-1238007A

Note: All of the above options are also available with Dual SPAL Fans & Wiring as shown in the picture.



1971-73 MUSTANG

This radiator features two rows of 1" tubes and serpentine fins at 15 fins per inch. Connections are at the top right and bottom left. For manual or automatic transmissions.



Double Row Radiator / Manual	Model: 32-1138009M
Double Row Radiator / Automatic	Model: 32-1138009A
+Black Ice Coating / Manual	Model: 32-1238009M
+Black Ice Coating / Automatic	Model: 32-1238009A
+Dual Spal Fan / Manual	Model: 32-4138009M
+Dual Spal Fan / Automatic	Model: 32-4138009A
+Dual Spal Fan / Manual / Black Ice Coating	Model: 32-4238009M
+Dual Spal Fan / Automatic / Black Ice Coating	Model: 32-4238009A

1974-78 MUSTANG

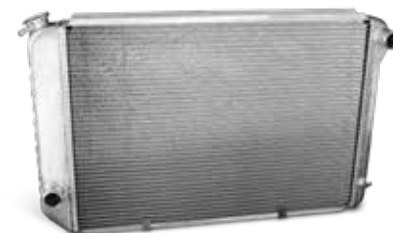
This radiator features two rows of 1" tubes and serpentine fins at 15 fins per inch. Connections are at the top right and bottom left. For manual or automatic transmissions.



Manual Transmission Radiator	Model: 32-1138011M
Automatic Transmission Radiator	Model: 32-1138011A
+Black Ice Coating / Manual	Model: 32-1238011M
+Black Ice Coating / Automatic	Model: 32-1238011A
+16" Spal Fan 2360 CFM / Manual	Model: 32-4138011M
+16" Spal Fan 2360 CFM / Automatic	Model: 32-4138011A
+16" Spal Fan / Manual / Black Ice Coating	Model: 32-4238011M
+16" Spal Fan / Automatic / Black Ice Coating	Model: 32-4238011A

1979-93 MANUAL MUSTANG

This radiator features two rows of 1" tubes and serpentine fins at 15 fins per inch. Available for manual transmissions.



Manual Transmission Radiator	Model: 32-1138012M
Automatic Transmission Radiator	Model: 32-1138012A
+Black Ice Coating / Manual	Model: 32-1238012M
+Black Ice Coating / Automatic	Model: 32-1238012A
+Dual Spal Fan / Manual	Model: 32-4138012M
+Dual Spal Fan / Automatic	Model: 32-4138012A
+Dual Spal Fan / Manual / Black Ice Coating	Model: 32-4238012M
+Dual Spal Fan / Automatic / Black Ice Coating	Model: 32-4238012A

1994-96 MUSTANG

This radiator features two rows of 1" tubes and serpentine fins at 15 fins per inch. Connections are at the top right and bottom left. For manual or automatic transmissions.

Double Row Radiator / Manual

Double Row Radiator / Automatic



Model: **32-1138013M**

Model: **32-1138013A**

1997-2004 MUSTANG

This radiator features two rows of 1" tubes and serpentine fin at 15 fins per inch. Connections are top right and bottom left. Available for manual or automatic transmissions.

Double Row Radiator / Manual

Double Row Radiator / Automatic



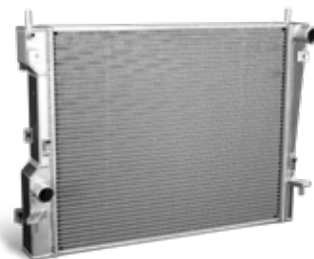
Model: **32-1138014M**

Model: **32-1138014A**

2005-14 MUSTANG GT

This radiator features two rows of 1.25" tubes and serpentine fins at 15 fins per inch. Fits manual '05- '14 V6 & GT, '07- '09 Shelby GT.

Manual Transmission Radiator



Model: **32-1138015M**

2015-17 MUSTANG GT

This new high performance "Direct Fit®" aluminum radiator has formed aluminum end tanks that are TIG-welded to the core, eliminating failures due to cracked plastic end tanks and/or gasket leaks. This unit fits into the original mounting. The factory connections, stock fan shroud mounting, and condenser are all in place for easy installation.

Two Row 1.25" Tube

Two Row 1.0" Tube



Model: **32-1148035M**

Model: **32-1138035M**





RADIATOR CAP

BRUSH ALUMINUM · 15 PSI

DeWitts™ logo engraved radiator cap. Custom grip notches for easy removal.

Model: **32-514**

DeWitts™ logo engraved radiator cap.

Model: **32-512**



RADIATOR CAP

BLACK ALUMINUM · 15 PSI

DeWitts™ logo engraved radiator cap. Custom grip notches for easy removal.

Model: **32-514B**

DeWitts™ logo engraved radiator cap.

Model: **32-512B**

SURGE TANK

DATED / NON DATED CORVETTE SURGE TANKS

1961-1962 Corvette Surge Tank - Date Coded	Model: 32-400
1961-1962 Corvette Surge Tank - Non Dated	Model: 32-420
1963-1964 Corvette Surge Tank - Date Coded	Model: 32-401
1963-1967 Corvette Surge Tank - Non Dated	Model: 32-421
1965-1967 Corvette Surge Tank - Date Coded	Model: 32-402
1968-1972 Corvette Surge Tank - Date Coded	Model: 32-403
1968-1972 Corvette Surge Tank - Non Dated	Model: 32-422



DEWITTS™ COOLANT

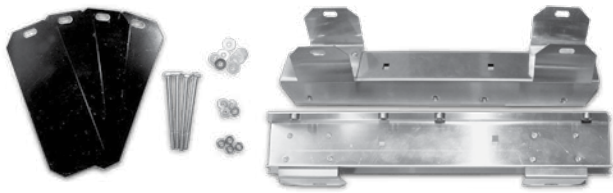
HIGH PERFORMANCE COOLANT

Specifically formulated to be an all-season coolant/antifreeze for high performance engines. It contains a patented low silicate corrosion protection package that prevents rust as well as corrosion and it is specifically engineered to protect materials used in modern performance engines. DeWitts™ Coolant offers a more advanced additive package than standard “green” coolants and maintains better thermal conductivity and heat transfer than propylene glycol (PG) based coolants. The advanced additive package contains special anti-foam agents to reduce water pump cavitation and increase cooling capacity. DeWitts™ Coolant meets GM 1899M, Ford ESE-M97B-44-A, and Chrysler MS7170 specifications and is compatible with all nationally distributed coolants and liquid coolant additives. System protection is maintained from -34°F to +265°F when used with a 15lb. radiator.

DeWitts™ High Performance Coolant

Model: **32-305**





1960-61 TANK BRACKETS

Side brackets for our 940 top tank aluminum radiator. This kit includes two mounting brackets, four die cut rubber cushions, and mounting hardware.

1960-1961 Model: **32-440**



MOUNTING STRAP

A new reproduction metal radiator mounting strap.

1955-1957 Model: **32-959**

1958-1960 Model: **32-960**



ENGINE OIL LINES W/ BYPASS

C5 / C6 CORVETTE ENGINE OIL LINES

This is a modified GM hose assembly for use with driver side (left) EOC applications. The adapter block includes a port for the oil pressure switch. On C5 model and GM Quick Connect fittings for radiator.

C5 CORVETTE Model: **32-898**

C6 CORVETTE Model: **32-899**



HOSE KIT

LS SERIES ENGINE OIL HOSE KIT

This kit includes the Improved Racing oil adapter, GM oil seal, metric bolts, and 1/8" npt plug. Bolts directly to any LS series engine and provides two large #10AN connections. This adapter has a port for the factory temperature sender and an auxiliary port for other needs. Kit also includes (4) four steel AN fittings and two aeroquip stainless steel hose assemblies for left side mounted EOC.

C5 CORVETTE Model: **32-894C**

C6 CORVETTE Model: **32-894D**



ENGINE OIL ADAPTER

LS SERIES PACKAGE

This package includes the oil adapter, GM oil seal, metric bolts, and a 1/8" npt plug. It bolts directly to any LS series engine and provides two large #10AN connections. It is ideal for external oil coolers. This adapter has a port for the factory temperature sender and an auxiliary port for other needs.

LS SERIES ADAPTER 180 T-Stat Model: **32-892**

LS SERIES ADAPTER 212 T-Stat Model: **32-892-212**



BB CORVETTE SURGE TANK

1969-72 BRASS

New reproduction brass/copper radiator expansion tank for 1969-72 big block engines with AC option only. Date tag and cap are sold separately. Shown in black for display only, tank is supply in raw copper.

SURGE TANK Model: **32-419**

SP004 CORVETTE FAN KIT

This package is for one (1) 16" high performance "pull" fan and bracket kit. It includes a relay harness and 195 temperature switch. The fan provides 2148 CFM at 21.8 amps. These brackets are designed to fit the "pin mount" type radiator used on 1963-72 small block Corvettes only. The fan kit replaces the stock engine driven fan and shroud.

Note: A shroud can be used to hide the electric fan, however, slight trimming of the shroud will be necessary.



Model: **32-SP004**

SP006 CORVETTE KIT

This package is for one (1) 16" high performance "pull" fan, bracket kit and hardware. The kit also includes one relay harness and 195 temperature switch. Brackets are designed to fit all factory GM copper/brass radiators, Griffin aluminum radiators, and DeWitts™ "Direct Fit" aluminum radiators. 2148 CFM at 10" static pressure 12vdc 21.8 amp. draw 16.22" x 15.63" x 3.45" SPAL Model 30102120.



Model: **32-SP006**

SP460 CORVETTE KIT

DeWitts™ has created a complete kit to add a dual fan to your GM vehicle. This package includes the SPAL dual fans, two wire harnesses, two relays, and one temperature switch. Custom brackets are designed to fit all factory GM crossflow radiators, Griffin radiators, and DeWitts™ "Direct Fit". 2420 CFM at 10" static pressure 12vdc 31.6 amp. draw 16.26" x 23.46" x 4.25" SPAL Model 30102052.



Model: **32-SP460**

C3 SP470 CORVETTE KIT

This kit includes the following items: 17" SPAL brushless fan (31007090), variable temperature sensor (SBL-TS-185P), DeWitts™ custom C3 aluminum shroud, fan harness adapter (SBL-TS-HARN), and jumper harness (SBL-YEAZ-PT).



Model: **32-SP470**

SP464 1984-89 CORVETTE FAN KIT

Now you can upgrade the factory 1700 CFM with this high performance (2360 CFM) fan. Fan comes with a "Direct Fit®" adapter plate, ready to bolt on and no cutting or splicing of wires is needed. We supply this fan with a harness-matching plug.



Model: **32-SP464**

1990-96 CORVETTE FAN KIT



Replace the factory fans with this 11" high performance SPAL puller fan. DeWitts™ has designed custom brackets for both factory single row cores and DeWitts™ "Direct Fit®" double row radiators. The evaporator mounting bracket must be modified, as this fan provides no supporting system.



DeWitts™ 2-Row Core

Model: **32-SP461**

GM Single Row Core

Model: **32-SP462**

SP015 CORVETTE KIT

We completely redesigned our C5 fan package to utilize a laser-cut aluminum shroud. The shroud incorporates four rubber flapper valves to improve air flow at high speeds and close at slower speeds. Two SPAL 12" high performance fans provide 3200 CFM, which doubles the factory output. DeWitts™ customized the fans with matching Corvette fan plugs, so no cutting or splicing is required.

All Standard height C5 models.

DeWitts™ "Short" models for extra top clearance.



Model: **32-SP015**

Model: **32-SP015-SC**

SP463 C6 CORVETTE FAN UPGRADE

SPAL's dual fan package boosts air flow up 40% from stock. This fan package only fits our "Direct Fit®" radiators.

Note: Factory wiring will need to be cut and spliced in order for the factory ECM to operate the fans.



Model: **32-SP463**

SP471 SPAL BRUSHLESS FAN KIT

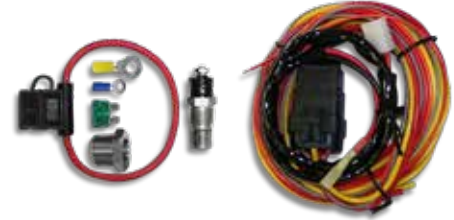
This kit includes the SPAL 17" brushless fan: 30107090, DeWitts™ custom C6 aluminum shroud, a variable temperature control sensor (SBL-TS-185P), a fan harness adapter (SBL-TS-HARN), and a jumper harness (SBL-YAZ-PT).



Model: **32-SP471**

SPAL RELAY HARNESS & TEMPERATURE SWITCH

Wiring harness, fuse link, relay, and 195 temperature switch. This switch is fully automatic (non-adjustable) with set points at 195 on and 175 off.



Complete Kit

Model: **32-SP195FH**

Relay Harness

Model: **32-SPFRH**

Switch

Model: **32-SP195**

SPAL BRUSHLESS FAN KITS

DeWitts™ has been selected as a SPAL system integrator for the new brushless fan line. DeWitts™ will custom design an aluminum shroud to fit your radiator and incorporate the SPAL high performance brushless fan.

The new SPAL brushless fans are ideal for engine and oil cooling, HVAC, and auxiliary cooling applications. These new fans were developed and designed with cutting edge technology, high energy ferrite magnets, and a state-of-the-art sine wave sensorless drive. These motors reach more than 82% electrical efficiency, placing our 300W and 500W power range products among the most efficient motors available anywhere. The result is high air-side performance at minimum electrical load. SBL motors are fully sealed to be IP68 and IP6K9K compliant and can operate in the presence of many aggressive or hazardous substances. Kits starting.



STANDARD FEATURES

- PWM and analog input for continuous adjustment of fan speed.
- Open collector diagnostic output.
- Meets EMC directives: 2006/28/EC.
- Protection:
 - Over temperature.
 - Overcurrent.
 - Mechanical overload.
 - Locked rotor.
 - Load dump.
 - Overvoltage.
- Low weight motor.
- Higher ambient working temperature.

ADVANCED FEATURES

- High efficiency and low power consumption.
- Low noise, vibration, and harshness.
- Electronic controls with on-board diagnostics.
- Motor with integrated electronics.
- Battery compensation system.
- Proprietary sine-wave sensorless drive (SPAL-patent).
- Low inertia inner rotor design.