

# INNOVATIVE HEAT & SOUND CONTROL SOLUTIONS



# INNOVATIVE HEAT & SOUND CONTROL SOLUTIONS

Thank you for taking the time to look through our new catalog. It is packed with innovative solutions to those damaging and annoying heat and sound issues we all come upon when working on our projects. In most instances this is our relaxation time, our hobby, our passion and when we have hot feet, burning wires, vapor locked fuel or painful rattles and vibrations it turns that relaxation time into frustration.

I have a good friend in Nashville that called me about his new (to him) '63 split window Vette. He was sick to his stomach about the fact that his wife didn't want to ride in it because her feet were so hot and he admitted to his discomfort as well. In addition he experienced starter failure due to heat soak. Now, when out for a cruise in his dream car, he had to plan to stay at least an hour whenever he turned the ignition off. That is painful, especially considering the money he forked out for the car. Imagine people standing around admiring your car. The pride you feel because you're the one walking up to get in and drive away. Everyone is waiting to hear the low rumble of the exhaust. You get in and turn the key...NOTHING! You try again ...NOTHING! His pride quickly became embarrassment. It should never have to be this way.

My buddy knew that he had a friend that specialized in solutions for these problems. The good news is... SO DO YOU! Design Engineering, Inc. Whether you are planning a new project or making new modification to an existing toy, we urge you to consider heat and sound control as part of your planning process. The best time to address heat and sound control is while things are apart and accessible. Trust us, a little time and money invested early will pay huge "relaxation dividends" later. Give us a call or drop us an email and we can walk you through innovative heat and sound solutions for your specific project.

We are the experts. We have the experience and ability to predict potential pitfalls before you have to experience them on the road. We look forward to working with you to make your project as enjoyable and comfortable as possible.

*Dave Markley  
-President, Design Engineering, Inc.*



# CUSTOM SOLUTIONS

For twenty years now Design Engineering has been known for producing exceptional quality heat control products primarily sold through the performance distribution system. But there's another facet of our business that we specialize in - working with other customers to help solve their heat and sound control problems.

We work with these customers to define their problem, determine the correct materials necessary to handle their heat or sound control issues and work to design a solution. Our in house design team can quickly turn around first article prototypes for inspection, for fitment and evaluation purposes. Once a final design is tested and approved by the customer, production begins based on their requirements.

Over the years we have designed custom solutions for many industries and fields including, aviation, powersports, racing, marine and even, locomotive. We have also produced "build to spec" contract work for commercial, industrial and military related businesses to name a few. All of these businesses who decided to contact Design Engineering for heat and sound solutions have recognized our capabilities and ability to come up with correct and innovative products to solve a problem.

## INDEX

- 4-9 / ALL NEW PRODUCTS
- 10-13 / Exhaust Wrap & Accessories
- 14-15 / Turbo Protection
- 16-18 / Plug Boot/Wire & Ignition Protection
- 18 / Easy Loom Split Line Sleeve
- 19 / Hi-Temp Shrink Tubing
- 20-22 / Line & Hose Protection
- 23 / Jeep Wrangler Heat Protection
- 24 / Corvette Heat Protection
- 25-27 / Component Protection
- 28-30 / Reflective Heat Barriers
- 31 / Tapes & Accent lighting
- 32 / Safety Products
- 33 / Radiator Relief Performance Coolant Additives
- 34-36 / CryO2 Cryogenic Intake Systems & Components
- 37-47 / Boom Mat Interior Heat & Sound Control Products
- 48-50 / Powersports Products
- 51 / Marketing materials



### EASY LOOM SPLIT LINE SLEEVE

- Protects against abrasion, chemicals & the elements
- Clean classy way to protect wires, hoses & cables
- Superior in style & function to plastic tubing
- Split design makes install easy
- Available in multiple diameters



FOR MORE DETAILS SEE PAGE 18

### EASY LOOM MASTER KIT

- Complete vehicle wire sleeve kit
- 5 different diameter Easy Loom sizes, shrink tubes, silicone tape, locking ties & electrical tape
- Approved by most major automotive OEM's



FOR MORE DETAILS SEE PAGE 18

### MINI VERSA-SHIELD STARTER SHIELD

- Universal-trim length to size - 5.25"W x 16.5"L
- Edges attach to itself with hook & loop closure design
- Multiple uses to protect master cylinders, cool cans, distributors, fuel pumps & more
- No need to remove starter for installation in most cases



FOR MORE DETAILS SEE PAGE 26

### EXO-SLEEVE LINE & HOSE PROTECTION

- 304 stainless mesh covering our Fire Sleeve line sleeving
- Includes 2ft of Quick Fix Tape
- Allows for air flow around the 100% silicone sleeve when in direct contact with a hot surface
- Excellent for areas around hot exhaust systems & headers



FOR MORE DETAILS SEE PAGE 20

### C7 CORVETTE CATALYTIC CONVERTER SHIELD

- Reduce heat soak into engine oil
- Dual layer design - Outer layer is our hi-temp TITANIUM material, Inner layer is 89% silica
- Easy installation with stainless steel Locking Ties - included
- Helps prevent car going into "limp mode" from engine oil becoming too hot.



FOR MORE DETAILS SEE PAGE 24

### C7 CORVETTE OIL COOLER HEAT SHROUD

- Reduces oil temperature
- Helps prevent Z06 from going into "limp mode" due to engine oil over heating
- No need to remove or disconnect lines to install



FOR MORE DETAILS SEE PAGE 24

## REFLECT-A-GOLD LINE & HOSE SLEEVE

- Glass mat backed, reflective line sleeve
- Protect lines, hoses, wires & more from heat
- With or without hook & loop closure for easy install
- Easy trim to length



FOR MORE DETAILS SEE PAGE 22

## GOLF CART MUFFLER SHIELD KIT YAMAHA 2007 - 2016

- Contains excess heat from getting to the seat
- Suppresses sound & vibrations
- Easy install with included tie tool
- No need to remove muffler to install



FOR MORE DETAILS SEE PAGE 25

## REFLECTIVE ARM SLEEVE

- Designed for go-kart racing
- Easy slip on/off
- Protects against burns & heat from exhausts
- Light weight & flexible
- 3 sizes to choose from



FOR MORE DETAILS SEE PAGE 32

## SPEAKER UPGRADE KIT

- Eliminate squeaks, rattles & improves acoustics
- Flexible – can be applied to irregular surfaces
- 2mm thick butyl with 4mil aluminum skin
- Works great on steel, fiberglass or plastic
- Great for license plate rattles



FOR MORE DETAILS SEE PAGE 39

## POSITIVE LOCKING TIE & TOOL KIT

- Made from 316 Stainless Steel
- Tensile Strength. 5/16" 200 lbs. 1/2" 350 lbs.
- Capable of withstanding in excess of 2500°F
- Includes locking Tie Tool
- Easily get locking ties tight
- Use with any 1/4" drive
- Works with any stainless tie up to 1/2" wide



FOR MORE DETAILS SEE PAGE 12

## BLACK TITANIUM EXHAUST WRAP

- Same great TITANIUM wrap now in black
- Extremely pliable for a tight & secure wrap
- Withstands 1800°F direct / 2500°F intermittent heat
- Hi tech carbon fiber look
- High resistance to abrasions, temperatures, oil spills & vibration breakdown

FOR MORE DETAILS SEE PAGE 11



## FORM-A-SHIELD HEAT BARRIER

- Can withstand direct temps to 1400°F
- Can be applied directly to hot surfaces
- Molds easily to cast exhaust manifolds, pipes & mufflers
- Outstanding performance in reflecting & blocking heat

FOR MORE DETAILS SEE PAGE 28



## BLACK UNDERHOOD THERMAL ACOUSTIC LINING

- Cooler hood surfaces & protects your paint
- Black textured finish
- Reduced engine noise for a more quiete interior
- Easy peel & stick installation
- Resists mold & mildew issues
- Measures 32" x 59"

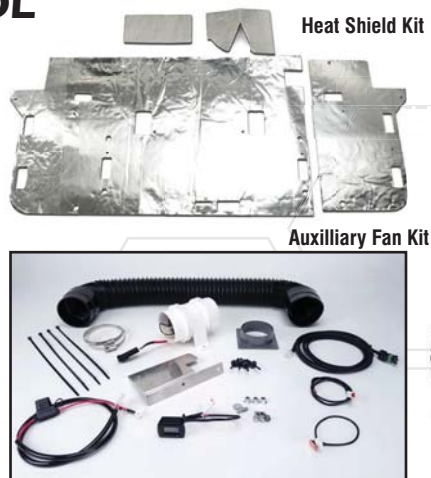
FOR MORE DETAILS SEE PAGE 42



## HONDA® PIONEER 1000 HEAT CONTROL

- Precision cut heat shield kit that reduces surface temperatures on the front seat, center body panel, & rear foot well
- Auxilliary Fan Kit helps evacuate the hot air that gets trapped in the engine compartment
- 3 and 5 seater models

FOR MORE DETAILS SEE PAGE 50



### FENDER DAMPING BOOM MAT FLEX

- Conforms to odd bends and tight curves
- 2.5 mm thick butyl with clear poly surface
- Great for wheel wells and around tubing & pipes
- 12" x 12" squares



FOR MORE DETAILS SEE PAGE 39

### DAMPING & SEALING BOOM MAT TAPE

- Butyl sealing tape great for covering seams & gaps
- Spot coverage for vibrations
- Secure & protect cables, lines & hoses



FOR MORE DETAILS SEE PAGE 39

### PREP SPRAY RUST SEALING PREP

- Great primer & rust converter
- Dries to a black paintable surface
- Great for body rust, trailers & more



FOR MORE DETAILS SEE PAGE 39

### VAPOR BLOCK FUEL LINE SLEEVE

- Prevents vapor lock
- 13mm diameter to fit most size fuel lines
- Split design with sealing edge allows for installation without removing fuel line



FOR MORE DETAILS SEE PAGE 22

### TIG TORCH CABLE COVER

- Extremely light weight sleeve to protect TIG torch cables
- Self closing split design makes for easy install
- Silicone tape included to secure ends



FOR MORE DETAILS SEE PAGE 22

### TIG CHILL TIG WELDER ADDITIVE

- Enhances TIG welder cooling system performance
- Environmentally friendly
- Safe with all systems & coolant/coolant water solutions



FOR MORE DETAILS SEE PAGE 33

### SHRINK TUBE WITH ADHESIVE LINING

- Great for water proofing wires and connectors
- 19mm inside diameter shrinks to 6mm
- High grade military spec



FOR MORE DETAILS SEE PAGE 19

### GROMMET & LOCKING TIE KIT

- Universal kit for mounting heat shields, a & other heat barrier materials
- Includes FREE Locking Tie Tool



FOR MORE DETAILS SEE PAGE 27

### MOTORCYCLE LEG SHIELD

- Prevents leg burns
- Easy on - easy off
- Leather outer shell with insulated inner layer



FOR MORE DETAILS SEE PAGE 49

### TRANS TUNNEL PLATE CORVETTE HEAT SHIELD

- Reduce console & interior temperatures
- Precision die cut for a perfect fit & ease of installation
- Peel backing, align into position & press into place



FOR MORE DETAILS SEE PAGE 24

### COOL COVER GOLD AIR TUBE COVER

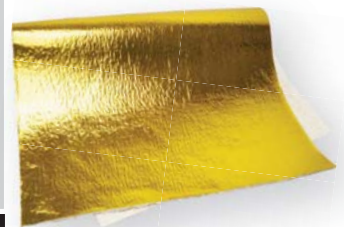
- Reflects heat from air tubes
- Promotes cooler air charge for added power
- Installs & removes in seconds for show or go



FOR MORE DETAILS SEE PAGE 26

### HEAT SCREEN GOLD RADIANT MATTING

- 20oz. heat treated base glass
- Base glass radiant heat to 1100°F
- .031" thick
- Mechanically fasten or use DEI Hi-Temp Adhesive



FOR MORE DETAILS SEE PAGE 29

### CATALYTIC CONVERTER UNIVERSAL SHIELD

- Includes all hardware
- Universal - fits most converters
- No need to replace your converter if all you need is a new heat shield.



FOR MORE DETAILS SEE PAGE 27

### FORM-A-BARRIER HEAT BARRIER

- Pliable - form to desired shape
- Both sides have reflective material
- Protection up to 1300°F
- Mechanically fasten



FOR MORE DETAILS SEE PAGE 27

### LS COIL PACK HEAT SHIELD

- Semi-Ridged shield made from Aluminum and high temp foam
- Insulates & reflects heat away from the coils
- Extends coil life
- Comes in pairs



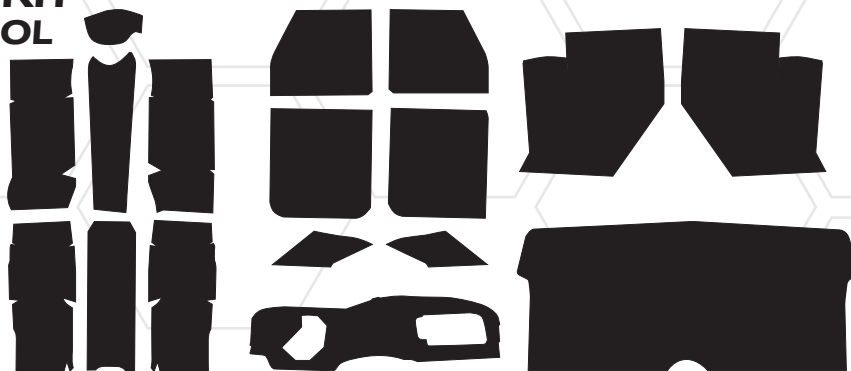
FOR MORE DETAILS SEE PAGE 25





## PRE-CUT CAMARO KIT HEAT & SOUND CONTROL

- Two steps to a cool quiet interior
- Die cut pieces for a no guessing exact fit
- Individual & complete kits



FOR MORE DETAILS SEE PAGE 43

## GOLF CART SEAT HEAT SHIELD

- Reduces seat discomfort from excessive heat
- Pre-cut for an exact fit
- Cooler, quieter ride



FOR MORE DETAILS SEE PAGE 25

## BOOM MAT HEADLINER MATERIAL

- Adds additional sound deadening & thermal insulation
- Use to finish any interior panel
- Easy peel & stick
- Dresses up any interior panel



FOR MORE DETAILS SEE PAGE 46

## AUXILIARY FAN KIT HONDA® PIONEER

- Evacuates trapped hot air
- Programmable thermostat
- Marine grade fan assembly



FOR MORE DETAILS SEE PAGE 50

## D-MAT INTERIOR INSULATION

- Light weight insulation solution for headliners, firewalls, doors, package trays & more
- Polymer blend for superior insulating capabilities
- Up to 65% reduction in heat



FOR MORE DETAILS SEE PAGE 40

## HEAT SHIELD KIT CAN-AM COMMANDER

- Blocks heat build up in the cockpit area
- Reduces engine noise & vibration
- Adhesive backed & precision cut



FOR MORE DETAILS SEE PAGE 50

## SPRINTER VAN INSULATION KIT

- Insulate interiors from cold & heat
- Improve interior acoustics
- Kits available for short or long wheel base vans
- Universal Kit



FOR MORE DETAILS SEE PAGE 43

## Exhaust Wrap

An important first step in reducing unwanted and power-robbing under hood heat, is wrapping exhaust headers and downpipes. Less under hood radiant heat results in a cooler air charge for improved performance.

- Reduces under hood radiant heat up to 50%
- Decreases exhaust density & increases exhaust flow
- Improves horsepower
- Sewn-in guide lines for proper overlap
- Glass fiber wraps withstands 1200° F direct 2000° F radiant heat

### TAN WRAP

Part #	Description
010101	1" wide x 50' roll
010102	2" wide x 50' roll
010103*	2" wide x 100' roll
010104*	6" wide x 100' roll
010105	1" wide x 15' roll
010106	2" wide x 15' roll
010109*	8" wide x 100' roll
010117*	1" wide x 100' roll
010137	2" wide x 25' roll

### BLACK WRAP

Part #	Description
010099	2" wide x 25' roll
010107	1" wide x 50' roll
010108	2" wide x 50' roll
010116*	2" wide x 100' roll <b>NEW</b>
010118*	1" wide x 100' roll <b>NEW</b>
010120	1" wide x 15' roll
010121	2" wide x 15' roll
010085*	8" wide x 100' roll <b>NEW</b>

\* Ships in non-retail packaging

Sewn-in guide lines



**Increases velocity & improves scavenging**  
**Lowers engine compartment and cockpit heat!**

*Don't forget the stainless steel Locking Ties and HT Silicone Coating on page 12!*

## EXO Series™ Exhaust Wrap

EXO Series is designed for extreme environment use. Traditional exhaust wraps have not been able to withstand the extreme use that Off-road, Dirt track, Desert and other forms of driving have with exposure to water and dirt. EXO Series™ is a dual-layer design, using a combination of hi-temp glass fiber, with a 304 grade stainless steel exoskeleton. This unique construction maintains high heat protection while offering superior abrasion and impact protection. Our unique Air Gap Technology keeps direct contact of the glass fiber wrap off the hot surface creating an insulating air barrier.

EXO wrap comes in a special 1.5" width, making it easy to install on any type of header, exhaust pipe or exhaust system. Perfect for high impact spot protection. The stainless steel exoskeleton locks together when overlapped keeping the wrap tight and making installation easy. Delivering outstanding looks and rugged performance for long term durability.

### EXO SERIES WRAP

Part #	Description
010075	1.5" x 10' Tan
010076	1.5" x 20' Tan
010059	1.5" x 30' Tan
010077	1.5" x 10' Black
010078	1.5" x 20' Black
010058	1.5" x 30' Black



Available in Tan and Black



THE ORIGINAL  
**TITANIUM** ™



**NEW**

### Exhaust Wrap

TITANIUM Exhaust Wrap, with LR Technology, is made from pulverized lava rock, stranded into a fiber material then woven into a proprietary weave. TITANIUM wrap is engineered to be stronger than most wraps and more durable for improved thermal performance and reliability.

- Extremely pliable for a tight & secure wrap
- Withstands 1800°F direct / 2500°F intermittent heat
- Hi tech carbon fiber look
- Pre-wetting roll not necessary for wrapping
- High resistance to temperatures, oil spills & vibration breakdown

#### TITANIUM WRAP

Part #	Description
010125	2" wide x 33' roll
010126	1" wide x 50' roll
010127	2" wide x 50' roll
010128	1" wide x 15' roll
010129	2" wide x 15' roll
010130*	2" wide x 100' roll
010131	2" wide x 25' roll
010132	2" wide x 35' roll
010133*	1" wide x 100' roll
010134*	4" wide x 100' roll
010135*	6" wide x 100' roll

#### BLACK TITANIUM WRAP

Part #	Description
010002*	2" wide x 100' roll
010003	2" wide x 50' roll
010004	2" wide x 25' roll
010005	2" wide x 15' roll

\* Ships in non-retail packaging



NOTE: 12 ft. of wrap is included with 4 & 6 cyl. kits and 16 ft. included with 8 cyl. kit.

### Speed Sleeves™

Speed Sleeves provide everything needed to cover and protect primary exhaust header pipes. An alternative to wrapping complete headers and ideal for spot protection from heat generating pipes and manifolds.

- Serves as an insulator & radiant heat barrier
- Quick & simple installation
- Includes 8" wide exhaust wrap, lock fasteners & Locking Ties
- Supplied wrap covers pipes up to 2-1/2" diameter

#### SPEED SLEEVES

Part #	Description
010083	Black 8 cylinder
010084	Black 4 & 6 cylinder
010114	Tan 4 & 6 cylinder
010115	Tan 8 cylinder



## EXHAUST WRAP & ACCESSORIES

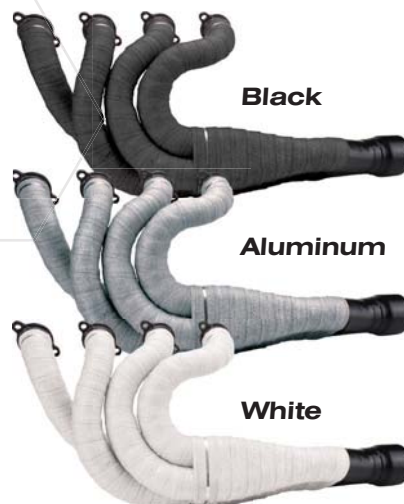
### HT Silicone Coating™

Recommended for use with DEI Exhaust Wraps, HT Silicone Coating penetrates, seals and protects as well as helping to extend the lifespan of exhaust wrap.

- Protection from abrasions, hot oil & grime
- Heat protection up to 1500°F
- For use on exhaust wraps, engine blocks, pipes, manifolds & more
- 12 oz. can (6 cans in a case)
- Cure temperature 400°F (two hour cure time)

#### HT SILICONE COATING

Part #	Description
010300	Assortment case 2 cans each (Black, Aluminum & White)
010301	Black
010302	Aluminum
010303	White



Also great as a paint for BBQ grills!

### Stainless Steel Locking Ties

Locking Ties are perfect for securing wrap to pipes with it's self-locking design. Locking Ties offer many other uses including bundling wires, hoses and other forms of insulation products. Just slide end into locking mechanism and pull tight.

- Constructed from high grade 316 stainless steel
- Capable of withstanding in excess of 2500°F
- 100lb tensile strength

#### LOCKING TIES

Part #	Description
010201	8" (9 pack; Fits 2" OD)
010202	14" (5 pack; Fits 4" OD)
010203	20" (10 pack; Fits 6" OD)
010201B	8" Bulk
010202B	14" Bulk
010203B	20" Bulk

NOTE: Also available in bulk quantities



### Positive Locking Ties

Positive Locking stainless steel ties are designed for high heat applications. They are great for securing DEI exhaust wrap or any place a high strength tie is needed. UV and corrosion resistant they will last for many years under severe use.

- Made from 316 Stainless Steel
- Tensile Strength. 5/16" 200 lbs. 1/2" 350 lbs.
- Capable of withstanding in excess of 2500°F

#### POSITIVE LOCKING TIES

Part #	Description
010208	1/4" x 9" (8 pack)
010209	1/4" x 14" (4 pack)
010210	1/4" x 20" (10 pack)
010211	1/2" x 9" (8 pack)
010212	1/2" x 14" (4 pack)
010213	1/2" x 20" (10 pack)
010216	8 - 5/16" x 9" & 4 - 5/16" x 20"
010217	1/2" x 40" (4 pack)



NOTE: Also available in bulk quantities

### Locking Tie Tool

An effective tool to tighten Stainless Steel Locking Ties. Saves time and hassle while providing a professional looking result. Slide the tool on the end of any 1/4" nut driver, engage the tie, and twist. Fits on the end of any 1/4" drive extension. Works with all popular styles of stainless ties - up to 1/2" wide. Made from hardened tool steel and black oxide coated for years of trouble free use.



#### LOCKING TIE TOOL

Part #	Description
010220	Locking Tie Tool



### Positive Locking Tie & Tool Kit

Perfect kit for securing wrap or anywhere that requires a high temperature fastening solution. Locking Tie Tool easily gets ties tight

- Kit Includes:**
- 8 - 9" Locking Ties (Up to 2" diameters)
  - 4 - 14" Locking Ties (Up to 4" diameters)
  - FREE Locking Tie Tool

#### POSITIVE LOCKING TIE & TOOL KIT

Part #	Description
010219	Positive Locking Tie & Tool Kit



**NEW**

# EXHAUST WRAP & ACCESSORIES



## Exhaust Wrap Kit

An all-in-one kit for wrapping a set of V8 headers or pipes.

### Kit includes:

- Two - 2" x 50ft rolls of exhaust wrap
- One can of HT Silicone Coating
- Locking Ties
- FREE Locking Tie Tool



### EXHAUST WRAP KIT

Part #	Description
010110	Black wrap w/Black HT Silicone Coating
010111	Tan wrap w/White HT Silicone Coating
010112	Tan wrap w/Aluminum HT Silicone Coating

INCLUDES FREE LOCKING TIE TOOL!

## Retail Exhaust Wrap Kit

An all-in-one kit for wrapping a set of V8 headers or exhaust pipes. Kit includes two 2" x 50ft rolls of exhaust wrap, one can of HT Silicone Coating, Locking Ties and FREE Locking Tie Tool. Now in a retail package.



INCLUDES FREE LOCKING TIE TOOL!

### RETAIL EXHAUST WRAP KIT

Part #	Description
010091	Tan Wrap & White HT Silicone Coating
010093	Tan Wrap & Aluminum HT Silicone Coating
010094	Black Wrap & Black HT Silicone Coating

## Retail TITANIUM Exhaust Wrap Kit

An all-in-one kit for wrapping a set of V8 headers or exhaust pipes with TITANIUM wrap. Kit includes two 2" x 50ft rolls of exhaust wrap, Locking Ties and FREE Locking Tie Tool.



INCLUDES FREE LOCKING TIE TOOL!

### RETAIL TITANIUM EXHAUST WRAP KIT

Part #	Description
010095	TITANIUM Exhaust & Pipe Wrap Kit

## Pipe Wrap & Locking Tie Kit

Great for spot heat protection! Use when headers are close to plug wires, or sections of exhaust pipe that run close to body panels, turbo down pipes or motorcycle pipes to prevent burns!

Kit includes one roll of 2" x 25' exhaust wrap & four 8" stainless steel locking ties to secure wrap. Available in Black, Tan and TITANIUM

### PIPE WRAP & LOCKING TIE KIT

Part #	Description
010119	Black
010122	Tan
010123	TITANIUM



## TITANIUM Pipe Shield

TITANIUM Pipe Shield combines the high heat tolerance of DEI's proprietary LR fiber technology with a unique rivet-based clamp shield that improves heat dissipation and cooling.

- Heat protection up to 1350°F.
- LR fiber technology is a two-ply material
  - Outer layer - pulverized and stranded lava rock woven for durability & strength.
  - Inside material - high temp resistant fabric (89% silica) designed to withstand 350° F more heat than glass fiber.



### TITANIUM PIPE SHIELD

Includes 3.5" clamps for pipe diameters up to 3"

4" Widths		6" Widths	
Part #	Description	Part #	Description
010453	4" x 8" Length	010450	6" x 12" Length
010454	4" x 12" Length	010451	6" x 24" Length
		010452	6" x 36" Length

## ONYX™ Black Pipe Shield

DEI's ONYX Series Flexible Heat Shield, comes in a rich black finish, looks great and outperforms other conventional heat shields. The outer edge features a surge stitch for durability. All hardware is stainless steel.

- Heat protection up to 1350°F.
- High-tech two-ply material
  - Outer layer is heat-treated glass fiber impregnated with molten aluminum;
  - Inside material is high temp resistant fabric (89% silica) designed to withstand 350° F more heat than glass fiber.
- 4" x 8" size



### ONYX BLACK PIPE SHIELD

Part #	Description
010496	4" x 8" ONYX Flexible Heat Shield



### TITANIUM™ Turbo Shields

Custom fit TITANIUM Turbo Shields™ provide the ultimate means of reducing turbo lag and serve as a superior heat barrier. They can withstand direct heat up to 1800°F and 2500°F radiant heat. Allowing more heat in the turbine and less damaging underhood radiant heat resulting in a boost in horsepower! Stronger and more durable than other turbo blankets or shields, TITANIUM Turbo Shields include a hi-temp rated silica insulation under the tight outer layer for extra protection against extreme turbo-generated heat. We have added a true riveted anchor along with added seam protection to accommodate the higher horsepower levels of heat.

- Riveted anchors incorporated to secure shield
- Hi-Tech custom carbon fiber look
- Ultimate thermal barrier reduces turbo lag
- Double reinforced seams inside & outside

Available as SHIELD ONLY or in a KIT.  
 Each Kit Includes: Shield, 2" x 15 ft roll of Titanium wrap,  
 Two 20" stainless steel Locking Ties & 5 ft of fastening wire

#### TITANIUM TURBO SHIELDS & KITS

Turbine	Shield Only	Shield Kit
T3	010140	010141
T4	010144	010145
T6	010146	010147
T25/T28	010148	010149
T22	010165	010166
GTP38R	010176	



### ONYX™ Turbo Shields

DEI recognized the need for new Turbo Shield applications, and now offer Turbo Shields in the smaller turbo sizes. Unlike cheap, knock-off copies, DEI Turbo Shields use an exclusive combination of premium heat resistant textiles and newly designed stainless steel attachment anchors. DEI Turbo Shields are used to maintain a more consistent temperature in the turbo, increasing efficiency and decreasing turbo lag. In addition to Garrett® brand turbo housings, the ONYX Turbo shields will fit several other popular turbo brands including Mitsubishi® and others.

- Strong riveted anchors to secure shield
- Black carbon fiber look
- Ultimate thermal barrier reduces turbo lag
- Double reinforced seams inside and outside

Available as SHIELD ONLY or in a KIT.  
 Each Kit Includes: Shield, 2" x 15 ft roll of black wrap,  
 Two 20" stainless steel Locking Ties & 5 ft of fastening wire

#### ONYX TURBO SHIELDS & KITS

Turbine	Shield Only	Shield Kit
T4	010181 <b>NEW</b>	010182 <b>NEW</b>
T3	010179 <b>NEW</b>	010180 <b>NEW</b>
T6	010010	
T22	010161	010162
T25/T28	010163	010164



### ULTRA 47™ Turbo Shields

A Tri-Layer mix of an Aluminum impregnated Glass fiber outer shell with a Hi-Temperature insulating mat core and glass blend liner. Double stitching and heavy duty capped anchor points make this Turbo Shield Look great and perform even better. Keeping the exhaust heat in the Turbo housing reduces turbo spool up time and increasing exhaust gas velocity resulting in more power quicker.

- Quicker spool up time
- Reduced under hood temperatures
- Increased exhaust gas velocity
- Smooth capped anchor points

Available as SHIELD ONLY or in a KIT.  
 Each Kit Includes: Shield, 2" x 15 ft roll of black wrap,  
 Two 20" stainless steel Locking Ties & 5 ft of fastening wire

#### ULTRA 47 TURBO SHIELDS & KITS

Turbine	Shield Only	Shield Kit
T3	010172	010174
T4	010173	010175



### Turbo Insulation Kit

Turbo Insulation Kits are designed to fit all turbochargers to reduce turbo lag and underhood temperatures allowing for a cooler air charge for more horsepower while protecting engine components from damaging heat.

- Universal-designed to fit all turbo turbine housings
- Helps reduce turbo lag
- Protection up to 1200°F

#### TURBO INSULATION KIT

Part #	Description
010113	Turbo Insulation Kit Universal

NOTE: Kit includes: 12" x 36" turbo blanket material, two (2) 14" and two (2) 20" stainless steel Locking Ties, one (1) 2" x 25 ft roll of Tan down pipe wrap & 6" w x 3 ft piece of glass fiber matting



AFTERMARKET AND OEM TURBOS			
MAKE	MODEL	NOTES	TURBO SHIELD SIZE
Borg-Warner	S300	<=14cm2 Turbine housing	T3
	S300	>=16cm2 Turbine housing	T4
	S400		T4
Garrett	GT35R	with T3 Turbine housing	T3
	GT35R	with T4 Turbine housing	T4
	GT37R		T4
	GT42/GT45	a/r 1.01-1.4 for Tight Fit	T4
	GT42/GT45	a/r 1.01-1.4 for Loose Fit	T6
Precision, TIAL, Turbonetics		All with T3 V-Band	T3
	Mitsubishi	MHI TD04/TD05 Turbochargers- Internal Gate (Talon, Eclipse, Laser)	T22
Subaru		MHI TD04/TD05 Turbochargers- Internal Gate (Impreza WRX, STI)	T22
Subaru		IHI VF39/VF43 Turbochargers- Internal Gate (Impreza WRX, STI)	T22
Subaru	OEM	'02 - '07 WRX/STi	T22
Blouch		EVO 3 big 16 G	T22

OEM DIESEL TRUCK APPLICATIONS				
MAKE	YEAR	ENGINE	TURBO	TURBO SHIELD SIZE
Dodge	1994 - 2002	5.9L Cummins	Stock Holset	T3
	2003 - 2007	5.9L Cummins	Stock Holset	T3
	2007½ - 2010	6.7L Cummins	Stock Holset	T4
Chevy/GMC	1993 - 1999	6.5L Turbo Diesel	Stock IHI	T25/T28
	2001 - 2004	LB7 6.6L Duramax	Stock IHI	T3
	2004½ - 2010	LLY,LBZ,LMM 6.6L Duramax	Stock Garrett	T4
Ford	2003 - 2007	6.0L Power Stroke	Stock Garrett	T4

## Turbo Tips

The ONYX and TITANIUM shields need 1/2" of clearance to fit in between the waste gate the waste gate actuator arm

When attaching shields, do not over tighten wire as that can harm the anchor points and seams.

## How to measure your turbine housing correctly

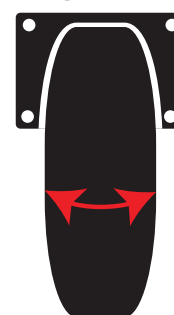
DEI Turbo shield sizes are based on two basic measurements. The first measurement is the circumference of the turbo not including the flange. (Image 1.) The second measurement is the width of the turbo at it's widest point not including the flanges. (Image 2.) After measuring, refer to the chart below to find the correct shield.

TURBO MEASUREMENTS CHART		
TURBO	CIRCUMFERENCE	WIDTH
T22	15"	2.25"
T25/28	15" - 16"	2.5"
T3	15" - 16"	2.5"
T4	20" - 22"	2.75"
T6	26"	3.75"

Image 1



Image 2



ONYX SERIES

TURBO SHIELD





# PLUG BOOT PROTECTION

## Protect-A-Boots™

Made from a high temperature resistant glass fiber material and treated with a proprietary coating, Protect-A-Boots™ provide spark plug boot and wire protection from extreme heat and helps prevent burn-through, hardening and cracking of boots.

- Non-flammable & protects against chemicals & resists water
- Universal-fits most straight or angled boots
- Withstands up to 1200°F of direct continuous heat
- TITANIUM up to 1800°F of direct continuous heat
- Double-wall construction for added durability

### PROTECT-A-BOOTS

2 Pack		8 Pack	
Part #	Color	Part #	Color
010501	Silver	010502	Silver
010511	Black	010512	Black
010521	Red	010522	Red
010531	Blue	010532	Blue
010541	TITANIUM	010542	TITANIUM
010561	Yellow	010562	Yellow
010571	Orange	010572	Orange



AVAILABLE IN 6 COLORS PLUS TITANIUM  
Size: 1" ID x 6"L

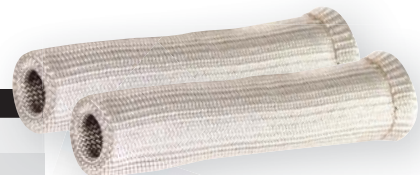
## Protect-A-Boot XL™ - Silver

A longer version of the DEI Protect-A-Boot. This 8" boot is made of the same high quality materials and construction of the 6" boots. Protect-A-Boot XL is made longer to fit a greater variety of longer plug boots.

- Longer boot to fit longer plug boots
- Non-flammable & protects against chemicals
- Withstands up to 1200°F of direct heat

### PROTECT-A-BOOT XL - SILVER

Part #	Description
010503	8" - 2 Pack
010504	8" - 8 Pack
010503B	8" - Bulk



Size: 1" ID x 8"L

## Protect-A-Boot™ Sleeve

Same construction as Protect-A-Boots but with a larger I.D. to fit over extreme angle spark plug boots without the need to have to remove plug boots.

- Universal-fits multiple angled spark plug boots
- 1-1/4" I.D.
- Withstands up to 1200°F of direct heat
- Glass fiber double-wall construction

### PROTECT-A-BOOT XL - SLEEVE

Part #	Description
010551	2 Pack - Protect-A-Boot Sleeve
010552	8 Pack - Protect-A-Boot Sleeve
010551B	Bulk Protect-A-Boot Sleeve



Size: 1-1/4" ID x 6"L - No sewn-in ring

## TITANIUM Protect-A-Boot XL™

Titanium spark plug boot protectors are the latest in thermal protection technology. Mined from lava rock, stranded and woven into a proprietary weave, TITANIUM Boot Protectors are engineered to withstand temperatures up to 1800°F of direct heat.

- Ultimate protection for spark plug boots & wires
- Strong, durable & long lasting construction
- Resistant to chemicals, abrasions
- Universal-fits most straight or angled boots

**Perfect for LS motors!**

### TITANIUM PROTECT-A-BOOT XL

Part #	Description
010543	2 Pack - Protect-A-Boot XL
010540	6 Pack - Protect-A-Boot XL <b>NEW</b>
010544	8 Pack - Protect-A-Boot XL
010543B	Bulk Protect-A-Boot XL



Size: 1" ID x 8"L - No sewn-n ring

## EXO Series™ Protect-A-Boot™

EXO Series Spark Plug Boots are designed to withstand extreme racing and high heat environments. The outer Exoskeleton stainless mesh prevents direct contact with the Dual layer Silica boot underneath. This combination of Silica/Air Gap and Stainless steel provides outstanding heat protection for your plug boots and wires. Available in 2, 4 and 8 packs so you can protect trouble areas or your complete wire set.

### EXO SERIES PROTECT-A-BOOT

Part #	Description
010088	2 pack
010087	4 pack
010086	8 pack
010506B	Bulk - Each



Size: 1" ID x 6"L - No sewn-n ring

**Boot is surrounded by a stainless steel mesh to improve heat dissipation and abrasion resistance.**





# PLUG BOOT & WIRE PROTECTION



## Protect-A-Wire™

Protect expensive spark plug wires from potential burning, cracking, and hardening typically caused by severe under hood heat. Easily installs on wire by removing distributor boot and sliding Protect-A-Wire™ over spark plug wire.

- Constructed from high temp resistant glass fiber material
- Protects electrical wiring, speedometer cable, hoses & more up to 10mm diameter
- Capable of handling direct heat up to 500°F
- Includes DEI Hi-Temp Shrink Tubes

### PROTECT-A-WIRE

2 Cylinder	8 Cylinder	Color
010601	010602	Silver
010611	010612	Black
010621	010622	Red
010631	010632	Blue

\* Available in bulk lengths



### 2 Cylinder Kit Contains:

7ft of sleeving, 6 - Hi-Temp Shrink Tubes

### 8 Cylinder Kit Contains:

25ft of sleeving, 25 - Hi-Temp Shrink Tubes

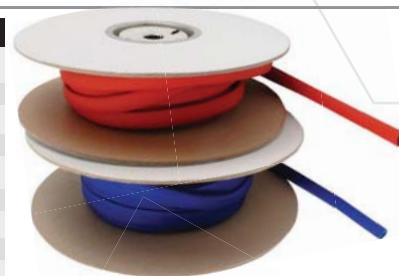
## Protect-A-Wire™ Spools

50 foot bulk rolls of Protect-A-Wire. Great shop use so Protect-A-Wire is always handy and in stock.

- Bulk spool is great to have on hand for any project
- Spools do not include Hi-Temp Shrink Tubes

### PROTECT-A-WIRE SPOOLS

Part #	Description	Color
010601B50	5/16" 50ft spool	Silver
010613B50	3/16" 50ft spool	Black
010611B50	5/16" 50ft spool	Black
010614B50	1/2" 50ft spool	Black
010618B50	3/16" 50ft spool	Red
010621B50	5/16" 50ft spool	Red
010630B50	3/16" 50ft spool	Blue
010631B50	5/16" 50ft spool	Blue



## Protect-A-Boot & Wire Kit™

Kits include everything needed to protect spark plug boots and wires from harmful under hood heat. Color matched Protect-A-Boots, Protect-A-Wire and Hi-Temp Shrink Tubes included for a professional finished look.

- Boots & sleeving are constructed from a high temperature resistant glass fiber material

### 2 Cylinder Kit Contains:

7ft of line sleeving,  
6 - Hi-Temp Shrink Tubes  
2 - Protect-A-Boots

### 8 Cylinder Kit Contains:

25ft of line sleeving,  
25 - Hi-Temp Shrink Tubes  
8 - Protect-A-Boots

### PROTECT-A-BOOT & WIRE KIT

2 Cyl	8 Cyl	Color
010701	010702	Silver
010704	010705	TITANIUM <b>NEW</b>
010711	010712	Black
010721	010722	Red
010731	010732	Blue



## Silicone Protect-A-Wire V8 Kit™

Annealed glass fiber sleeve is coated with silicone providing excellent resistance to abrasion, fraying and punctures. Resistant to chemicals and extremely flexible, heat resistant to 500°F makes it the perfect choice to cover and protect your spark plug wires. High dielectric strength for high voltage coils and ignition systems.

### Kit Includes:

- 25 ft of 3/8" ID Silicone Sleeve
- 8 DEI branded high heat shrink tube ends
- Eight numbered 1-8 high temp shrink tube ends



Spools are ideal for shop use and retailers to sell by the foot. Shrink tubes not included.

### SILICONE PROTECT-A-WIRE V8 KIT

Part #	Description
010636	Silicone Protect-A-Wire V8 Kit

### SILICONE PROTECT-A-SLEEVE

Part #	Description
010635	Silicone Protect-A-Sleeve bulk per foot

### SILICONE PROTECT-A-WIRE SPOOLS

Part #	Description	Color
010636B50	3/8" ID 50ft Spool	Black

## Aluminum Plug Wire Sheath™

Aluminized Plug Wire Sheath is constructed from high-temperature rated glass fiber material bonded to a heat reflective aluminized material. Plug Wire Sheaths are an inexpensive alternative for protecting specific areas on both ignition wire and boot locations from damaging heat generating sources.

- Protecting electrical wiring, hoses, cables & more
- Capable of withstanding 2000°F of radiant heat
- Inexpensive alternative for protecting ignition wires & boots

### ALUMINUM PLUG WIRE SHEATH

Part #	Description
010409	3/4" diameter x 6" long (4 pack)





# PLUG WIRE PROTECTION / SPLIT LINE SLEEVE

## TITANIUM Protect-A-Sleeve™

TITANIUM LR technology is now in the best protection sleeve on the market. These kits include high temp heat shrink ends. The 1/2" ID will fit larger spark plug wires and protect them from hot exhaust manifolds and headers. Sizes large enough for radiator hoses, heater hoses and other larger hoses.

- Withstands up to 2500°F radiant heat
- Protects plug wires from hot exhaust manifolds & headers
- Sizes large enough for radiator hoses, heater hoses & other large hoses
- 1/2", 1" and 2" diameters available

### TITANIUM PROTECT-A-SLEEVE

Part #	Description
010475	1/2" ID x 4ft
010475B	1/2" ID bulk per foot
010483	1" ID x 4ft
010483B	1" ID bulk per foot
010482	2" ID x 3ft
010482B	2" ID bulk per foot



## TITANIUM Protect-A-Wire™ V8 Kit

We have taken our TITANIUM LR technology and made it into the best protection sleeve on the market. Capable of withstanding temperatures up to 1800°F direct heat and 2500°F radiant, chemical and oil resistant, it provides the ultimate protection for your ignition wires. The 1/2" ID will fit larger spark plug wires and protect them from hot exhaust manifolds and headers.

### Kit Includes:

- 8 - DEI heat shrink tubes
- 16 - 1 through 8 numbered heat shrink tubes
- 25ft of Titanium sleeving

### TITANIUM PROTECT-A-WIRE V8 KIT

Part #	Description
010603	Titanium Protect-A-Wire V8 Kit



## Easy Loom™ - Split Wire Sleeve

Protective Split-Sleeves offer a clean classy way to protect exposed wire, hoses, and cables on trucks, SUV's and powersport vehicles including ATVs and UTVs. Superior in style and function to simple plastic tubing, DEI's Split Sleeve adds a superior level of protection to sensitive wires, cables and hoses exposed to abrasion & the elements. Rated up to 347°F

- Protects against abrasion, chemicals & the elements
- Clean classy way to protect wires, hoses & cables
- Superior in style & function to plastic tubing
- Split design makes install easy
- Available in multiple diameters



**NON-BULK ROLLS INCLUDES 2FT OF SILICONE TAPE TO SEAL ENDS**

### EASY LOOM - SPLIT WIRE SLEEVE

Part #	Description
010650	5mm (3/16") x 20ft
010651	8mm (5/16") x 20ft
010652	10mm (3/8") x 20ft
010653	12mm (1/2") x 12ft
010654	16mm (5/8") x 12ft
010655	19mm (3/4") x 10ft
010656	25mm (1") x 10ft
010657	38mm (1-1/2") x 6ft

### EASY LOOM - BULK ROLLS

Part #	Description
010650B100	5mm (3/16") x 100ft
010651B100	8mm (5/16") x 100ft
010652B100	10mm (3/8") x 100ft
010653B100	12mm (1/2") x 100ft
010654B100	16mm (5/8") x 100ft
010655B100	19mm (3/4") x 100ft
010656B100	25mm (1") x 100ft
010657B100	38mm (1-1/2") x 100ft



## Easy Loom™ - Master Kit

Everything to protect and restore your factory or after-market wire harness. 5 different diameter Easy Loom sleeves, Shrink tube ends, silicone tape, locking ties and electrical tape.

- Self-closing split design with 30% overlap
- Peak temp rating 347°F - Melting point 500°F
- Superior in style and function to plastic tubing
- Professional look & added protection
- Approved by most car manufacturers

### Kit Includes:

- Easy Loom 1" x 6'
- Easy Loom 3/4" x 10'
- Easy Loom 1/2" x 30'
- Easy Loom 5/16" x 60'
- Easy Loom 3/16" x 15'
- Heat Shrink 3/8" x 2'
- Heat Shrink 1/4" x 1'
- Heat Shrink 1/2" x 1'
- Ties 8" x 40
- Ties 4" x 100
- Silicone Tape 1" x 12'
- Electrical Tape 1 Roll



### EASY LOOM MASTER KIT

Part #	Description
010663	Easy Loom master Kit

**NEW**



### Hi-Temp Shrink Tubes

Professional grade military spec flexible polyolefin tubing provides excellent protection from dirt, dust, solvents, and foreign materials as well as providing strain relief. Over expanding tubing shrinks down to 33% of it's original diameter for a snug seal without reduction to it's original length.

- 3:1 shrink ratio
- Use to insulate wires, connections, terminals, wire splicing & more
- Operating temperature range: -67°F to 275°F
- Apply at 120°F to 180°F using heat gun



#### HI-TEMP SHRINK TUBES

Part #	Description
010832	9mm (3/8") x 4ft
010833	12mm (1/2") x 4ft
010834	18mm (11/16") x 4ft
010835	24mm (1") x 4ft
010836	9,12,18 & 24mm x 2ft ea.
010837	3mm (1/8") x 4ft
010838	6mm (1/4") x 4ft
010839	3, 6 & 9mm x 4ft ea.
010856	50mm (2") x 2ft
010856B	50mm (2") x bulk per foot
010857	75mm (3") x 2ft
010857B	50mm (3") x bulk per foot

#### HI-TEMP SHRINK TUBES SPOOLS

Part #	Description
010850	9mm (3/8") x 50ft Spool
010851	12mm (1/2") x 50ft Spool
010852	18mm (11/16") x 50ft Spool
010853	24mm (1") x 50ft Spool
010854	3mm (1/8") x 50ft Spool
010855	6mm (1/4") x 50ft Spool
010832B200	9mm (3/8") 200ft spool
010833B200	12mm (1/2") 200ft spool
010834B200	18mm 11/16") 200ft spool
010835B200	24mm (1") 200ft spool
010837B500	3mm (1/8") 500ft spool
010838B200	6mm (1/4") 200ft spool



### Spark Plug Wire / Boot Shrink Tubes

Perfect for sealing spark plug wires to boots at each end forming a water-tight weatherproof seal. With a 3 to 1 shrink ratio, shrink tubes can be used to bundle wires as an alternative to tape or plastic ties.

- 3:1 shrink ratio
- Offers a clean & professional under hood look
- Easy to install using heat gun
- 25 tubes to a package
- Four colors to choose from

#### SPARK PLUG WIRE / BOOT SHRINK TUBES

Part #	Description	Color
010800	18mm (11/16") x 1-1/2"	Gray
010801	12mm (1/2") x 1-1/2"	Gray
010810	18mm (11/16") x 1-1/2"	Black
010811	12mm (1/2") x 1-1/2"	Black
010820	18mm (11/16") x 1-1/2"	Red
010821	12mm (1/2") x 1-1/2"	Red
010830	18mm (11/16") x 1-1/2"	Blue
010831	12mm (1/2") x 1-1/2"	Blue



### Numbered Wire Marker Kit

Make labeling plug wires simple and easy. DEI's numbered wire marker sets are made from high temperature Mil Spec black heat shrink tubes. They are tough enough to handle high under hood temperatures and are easy to install. High shrink ratio of 3 to 1 allows markers to slide over plug boot ends and still shrink tight to the wires. Sets are numbered 1 through 8 in a high visibility white ink that is oil and chemical resistant.

- 3:1 shrink ratio
- Offers a clean & professional under hood look
- Keep track of wires

#### NUMBERED WIRE MARKER KIT

Part #	Description
010849	Numbered Wire Marker Kit



### Shrink Tubes with Adhesive

Shrink tube with adhesive is a flexible, flame-retardant heat shrinkable polyolefin tubing, with a thick wall modified adhesive which melts and flows, encapsulating and sealing components inside. Recommended for applications that require water proofing for light cable and wire harnesses and protection of connectors. Operating temperature range is -67°F to 257°F

- Great for water proofing wires & connectors
- 19mm inside diameter shrinks to 6mm
- High grade military spec

#### SHRINK TUBE W/ADHESIVE

Part #	Description
010858	2 foot length



Adhesive lining that melts with heat, encapsulates & seals components inside forming water tight seal



## Fire Sleeve & Tape Kit™

Constructed from a high temperature resistant braided glass material, woven into a sleeve and heavily coated with 100% silicone rubber, Fire Sleeve provides the ultimate in heat insulation and protection from direct heat up to 500°F.

Each kit includes a 16-inch length of black Fire Tape to finish off ends of Fire Sleeve or when joining two Fire Sleeves together to present a clean and professional look.

- Insulates wiring, hoses, oil / brake / transmission lines & more
- Use for bundling & protecting hoses, electrical wiring etc.
- Withstands 2000°F of intermittent heat

### FIRE SLEEVE & TAPE KIT

Part #	Description
010470	3/8" ID x 3ft
010472	5/8" ID x 3ft
010474	1" ID x 3ft
010473	3/4" ID x 3ft

### FIRE SLEEVE BULK

Part #	Description
010470B	3/8" ID per foot
010472B	5/8" ID per foot
010474B	1" ID per foot
010473B	3/4" ID per foot



Spools are ideal for shop use and retailers to sell by the foot.

### FIRE SLEEVE SPOOLS

Part #	Description
010470B100	3/8" ID 100ft
010470B25	3/8" ID x 25ft
010472B25	5/8" ID x 25ft
010474B25	1" ID x 25ft
010472B100	5/8" ID x 100ft
010473B50	3/4" ID x 50ft
010474B100	1" x 100ft

## Fire Wrap 3000™

Constructed from the same material as Fire Sleeve™ but with the convenience of a hook & loop edge closure design. Simply wrap Fire Wrap 3000 around wires, cables or hoses without the need of disconnecting.

- Withstands direct heat up to 500°F
- Protects against oil, dirt, road grime & other contaminants
- Pliable enough to shape & fit tightest bends

### FIRE WRAP 3000

Part #	Description
010477	5/8" ID x 2ft
010478	1" ID x 2ft
010479	1-1/2" ID x 2ft

### FIRE WRAP 3000 BULK

Part #	Description
010477B	5/8" ID per foot
010478B	1" ID per foot
010479B	1-1/2" ID per foot



NOTE: Each size is available in custom cut lengths up to 300 ft. Various diameter sizes are also available as a special order

## EXO Sleeve™

A high temperature resistant braided glass material, woven into a sleeve and heavily coated with 100% silicone rubber with 304 stainless mesh outer covering, EXO Sleeve provides the ultimate in heat insulation and protection from direct heat up to 500°F.

- Silicone glass sleeve (DEI Fire Sleeve) surrounded by 304 stainless mesh outer covering
- Allows direct contact to heat source
- Highly abrasion resistant
- Provides air flow around sleeve
- Perfect for Insulates wiring, hoses, oil / brake / transmission lines & more

### EXO SLEEVE

Part #	Description
010872	3/8" I.D. x 3ft
010873	1" I.D. x 3ft



Stainless exoskeleton

Glass fiber lined sleeve



**NEW**

## Fire Tape™

Fire Tape is a multi use self-fusing tape that can be used to cover wires, seal temporary leaks, and much much more. Made of a non-adhesive silicone rubber, Fire Tape is water-proof, remains flexible, and does not leave a sticky residue after removal.

- Corrosion & moisture resistant
- Stretch & wrap application
- 700 psi tensile strength
- Permanent air/liquid tight seal

### FIRE TAPE

Part #	Description
010476	1" wide x 36ft





## Heat Sheath™

Designed to slide over wires, cables and hoses, Heat Sheath provides the ultimate protection from extreme heat as well as chemical and oil spills, dirt, grease and road grime. Constructed from high temperature fabric and bonded to an aluminized material to reflect heat. Fireproof and withstands direct heat up to 500°F.

- Pliable for tight bends
- Capable of withstanding 2000°F radiant heat
- Trim to desired length

NOTE: Each diameter is available up to 50 ft lengths. Other diameters are also available as a special order.

### HEAT SHEATH

Part #	Description
010418	1/2" ID x 3ft
010403	3/4" ID x 3ft
010419	1" ID x 3ft
010404	1-1/4" ID x 3ft
010420	1-1/2" ID x 3ft
010403B50	3/4" ID x 50ft
010404B50	1-1/4" ID x 50ft
010418B50	1/2" ID x 50ft
010419B50	1" ID x 50ft
010420B50	1-1/2" ID x 50ft



## Heat Shroud™

Heat Shroud is made from a high temperature rated glass fiber fabric with an aluminized facing. Same as Heat Sheath but with the added convenience of hook & loop closure with open edges. No need to disconnect wires, cables and hoses, simply wrap around whatever needs protection and close edges.

- Withstands 500°F direct heat
- Trim to desired length
- Convenient hook & loop designed edges

### HEAT SHROUD

Part #	Description
010405	1/2" to 1-1/4" ID x 3ft
010457	3/4" ID x 3ft
010487	2" to 2-1/2" ID x 3ft
010405B50	1/2" to 1-1/4" ID x 50ft
010487B50	2" to 2-1/2" ID x 50ft



## Ultra 47™ Sheath

Ultra 47 Sheath has a higher sustained heat capability of up to 1100°F and is more flexible and light weight than standard foil or bonded aluminum products. Constructed from a process that impregnates molten aluminum to the core fabric giving it higher heat reflective properties. The perfect choice for tight high heat applications.

- Can be trimmed to length
- Direct heat to 1100°F
- Easy to cut & trim to length
- 40% lighter than most line sleeving

### ULTRA 47 SHEATH

Part #	Description
010230	1/2" ID x 3 ft
010231	1/2" ID x 15 ft
010232	3/4" ID x 3ft
010233	1-1/4" ID x 3ft



## Cool Tube™

Designed to provide thermal protection from damaging heat, resist abrasions, contaminants, and condensation. Covered with a heat resistant glass fiber fabric and pre-slit lengthwise eliminating the need to disconnect cables, lines, hoses or wires for an easy install.

- Withstands direct heat up to 500°F
- Made from convoluted nylon 6 tubing
- Reduces temperature by more than 40%

### COOL TUBE

Part #	Description
010414	1/2" ID x 3 ft
010415	1/2" ID x 15 ft
010406	3/4" ID x 3 ft
010407	3/4" ID x 15 ft



## Cool Tube Extreme™

Able to reflect continuous heat up to 750°F while offering a quality professional look, Cool Tube Extreme™ is flexible enough to conform to tight bends and provide superior protection against extreme under hood temperatures, weather conditions and abrasions. Made from a special composite material with a spiral wire reinforcement.

- Trim to length
- Can be slit lengthwise for easy install
- Tough, durable with an easy to clean finish

### COOL TUBE EXTREME

Color	Length	1/2" ID	3/4" ID	1" ID	1-1/4" ID	1-1/2" ID
Silver	3 ft	010421	010425	010429	010433	010437
Silver	9 ft	010441	010445	--	--	--
Black	3 ft	010424	010428	010432	010436	010440
Black	9 ft	010444	010448	--	--	--





## LINE & HOSE PROTECTION

### Heat Shroud GOLD™

High temperature Metalized Polyimide lamination, bonded to a robust 20oz heat treated glass fiber base material, Heat Shroud GOLD will protect and keep components cool in the most demanding applications. Able to reflect radiant heat up to 800°F makes Heat Shroud Gold the perfect choice to keep critical lines cool and protected. The added convenience of hook & loop closure eliminates the need of removing one end of connected wires, cables and hoses to install.

- 20oz. heat treated base glass
- Metalized Polyimide lamination
- Base glass rated to 1100°F
- High temperature hook & loop

#### HEAT SHROUD GOLD

Part #	Description
010458	1/2" - 1-1/4" x 36"



### Heat Sheath GOLD™

DEI Heat Sheath GOLD™ is manufactured from our high temperature Metalized Polyimide lamination, bonded to a robust 20oz. heat treated glass fiber base material, the DEI line of GOLD sleeving will protect and keep components cool in the most demanding applications. Able to reflect radiant heat up to 800°F makes DEI GOLD line sleeving the perfect choice to keep critical lines, air intakes and hoses cool and protected.

- 20oz. heat treated base glass
- Metalized Polyimide lamination
- Base glass rated to 1100°F

#### HEAT SHEATH GOLD

Part #	Description
010914	3/4" x 36"
010915	1-1/4" x 36"
010916	1/2" x 36"
010917	1" x 36"
010918	2 -1/4" x 36"



### Vapor Block™ Fuel Line Sleeve

Vapor Block is a line sleeving specifically developed to prevent vapor lock in fuel systems. Its excellent thermal effectiveness comes from glass fiber and polyester laminated to an aluminum outer layer. Split design with adhesive flap.

- 13mm inside diameter
- Use on fuel lines to prevent vapor lock

#### VAPOR BLOCK

Part #	Description
010669	1/2" (13mm) x 36"



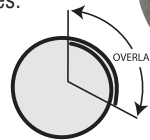
### TIG Torch Cable Cover

Light weight and flexible the DEI TIG Torch Cover protects expensive cables while not feeling heavy or cumbersome. Made from PET monofilament and multifilament combination it provides exceptional abrasion and chemical resistance.

Able to handle temperatures up to 347°F with a 500F melting point. The self-closing split sleeve design makes for an easy installation and includes self-binding silicone tape to secure the ends. Meets SAE ARP 1536 A and ISO 6722 Abrasion ratings and SAE J 369 Flammability rating of Self-extinguishing. With a 3/4" I.D. and 33% overlap it will fit most cables.

#### TIG TORCH CABLE COVER

Part #	Description
010664	3/4" x 11 Feet
010665	3/4" x 22 Feet



People ask me when they see DEI products on my car all kinds of technical information. I tell them I'm not sure. But I do know when I come off the track, I can open my hood and work on my car. I don't have to wait for an hour to let it all cool down.

**-AARON QUINE**

DEI #69 TA2 CAMARO



## Jeep® Fuel Rail & Injector Cover Kit

We have come up with a solution for a common heat soak & vapor lock problem in 1997-2004 JEEP models with inline 6 engines... Easy to install heat protection kit reduces heat soak on the fuel rail and injectors, in turn reducing vapor lock and keeping fuel cool.

- Fits 1997-2004 4.0L JEEP models with inline 6 motor
- Reduces fuel rail & injector fuel temps
- Reduces chance of vapor lock
- Protect injectors & fuel rail from engine heat

### Kit Includes:

- One – Manifold heat shield
- One – Fuel rail heat cover
- Six – Fuel injector covers
- Twelve - OE replacement fuel injector O-rings

### JEEP FUEL RAIL & INJECTOR COVER KIT

Part #	Description
010378	Jeep Fuel Rail & Injector Cover Kit



## Jeep® JK 2012-15 Battery Box Heat Shield Kit

Complete kit to protect battery boxes and electrical connections from damaging heat. Includes two heat shields, hardware and detailed instructions.

- Protects battery box and electrical connections from heat damage while operating at slow off road speeds
- Heat from the passenger side exhaust can rise to the point of damaging battery boxes and electrical wiring when under heavy loads and slow speeds
- Easy to install & includes all necessary hardware

### JEEP JK BATTERY BOX HEAT SHIELD KIT

Part #	Description
010456	Jeep JK Battery Box Heat Shield Kit



Protects electrical connections from engine and exhaust heat



Protects battery box from exhaust & engine heat

## Jeep® JK 2007-11 Header Wrap Kit

Design to help prevent plug wire and boot melting when installing shorty headers on your 2007-2011 Jeep JK with V6 engine. The Jeep JK has very little space for the spark plug wires once the headers are installed making this a must have kit.

- Includes everything needed for a typical set of shorty headers
- Withstands extreme temperatures
- Resists solvents, oils, fuel, acids & chemical spills
- Reduces underhood temperatures

### Kit Includes:

- Two 25 ft rolls of TITANIUM Exhaust Wrap
- Eight 9" Stainless Positive Locking Ties
- Four 14" Stainless Positive Locking Ties
- Six 8" TITANIUM Spark Plug Boot Protectors

### JEEP JK HEADER WRAP KIT

Part #	Description
010136	Jeep JK Header Wrap Kit



## Corvette C7 Oil Cooler Line Heat Shroud

The DEI Oil Cooler Heat Shroud is designed to easily wrap around the oil cooler lines without disconnecting the lines making installation simple and easy. The result is greatly reducing harmful radiant heat from soaking into the oil cooler lines.



- Reduces oil temperature
- Helps prevent Z06 from going into "limp mode" due to engine oil over heating
- No need to remove or disconnect lines to install

### CORVETTE C7 OIL COOLER LINE HEAT SHROUD

Part #	Description
010488	C7 Corvette Oil Cooler Line Heat Shroud 2-2.5" I.D. x 18"L

## Catalytic Converter Shield C7 Corvette

Chevrolet located the C7 engine oil cooler and oil filter close to the driver side catalytic converter causing heat transfer into the engine oil. Possibly making the ECM send the car into limp mode. By installing our converter heat shield we block this heat transfer and prevent the oil temperature from rising.



- Dual layer design - Outer layer is hi-temp TITANIUM, Inner layer is 89% silica to handle extreme heat
- Reduce heat soak into oil
- Easy installation with stainless steel Locking Ties
- Helps prevent car going into "limp mode" from engine oil becoming to hot.

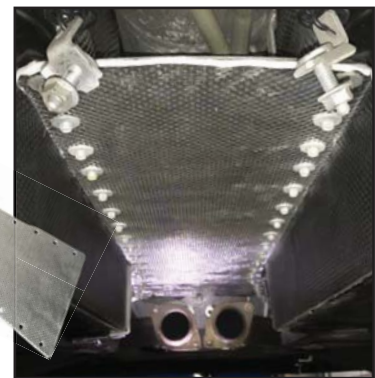
### CATALYTIC CONVERTER SHIELD

Part #	Description
010069	Catalytic Converter Shield

## Corvette Trans Tunnel Plate Heat Shield

**NEW**

A well know and long time problem with many Corvettes is the amount of heat transferred into and through the console. DEI has the solution to dramatically reduce the amount of heat transferred to the Corvette C5 and C6 Transmission Tunnel Reinforcement Plates and into the vehicles' interior. This shield reduces the negative effects of in-cabin excessive high temperatures and improve the experience of driving a Corvette.



- Reduce console & interior temperatures
- Precision die cut for a perfect fit & ease of installation
- No need to remove the Trans Tunnel Plate
- Peel backing, align into position & press into place
- Not affected by wind, water or other harsh conditions
- Extremely light weight

### CORVETTE TRANS TUNNEL HEAT SHIELD

Part #	Description
050525	C5 Trans Tunnel Plate Heat Shield
050526	C6 Trans Tunnel Plate Heat Shield

## Corvette EGR Pipe Cover 1985 - 1991

Protect 1985 through 1991 Corvette L98 EGR systems and nearby under hood components from damaging heat with the proper EGR Pipe Cover. DEI's sewn-in hook & loop edges makes for a quick and straightforward replacement without removing the EGR pipe. Just wrap the cover around EGR pipe and close edges. Trim off any excess material if necessary. It's that easy.



- High temp glass fiber fabric bonded to aluminized outer facing
- Handles direct heat up to 500°F and 2000°F radiant
- Provide protection from oil, grease and chemical spills.

### CORVETTE EGR PIPE COVER

Part #	Description
010387	11.5" x 4.5" - 1985-88 (some 1989)
010388	15" x 4.5" - 1990-91 (some 1989)
010389	4.5" x 4.5" - 1987-91



### Muffler Shield Kit

The Best muffler shield/wrap on the market. Based off our proven Floor and Tunnel Shield II, Muffler Shield is designed to wrap around just about any size muffler. Includes our tough stainless steel positive locking ties for a tight secure installation. Made from 10mil dimpled aluminum with a 1/8" needle glass insulator it can be easily trimmed to fit most mufflers. Greatly reduces radiant heat coming off your muffler resulting in a cooler interior and protection from damaging heat.

- Greatly reduce radiant heat from muffler
- Cooler interior
- Protect from damaging heat

**Kit Includes:**  
 One - 42" x 24" Muffler Shield  
 Four - 40" x 1/2" Positive Locking Ties  
 FREE Locking Tie Tool

#### MUFFLER SHIELD KIT

Part #	Description
010455	Muffler Shield Kit

**INCLUDES  
FREE LOCKING  
TIE TOOL!**



### LS Engine Coil Pack Heat Shield

Eliminates the need to relocate coils packs and prevents premature coil failure due to overheating. Easy to install pre-cut shields install under the coil bracket reducing the radiant heat to the coils from the engine and exhaust. Works on factory and aftermarket coils and brackets.

- Semi-Ridged shield made from double sided aluminum & high temperature foam core
- Insulates & reflects heat away from the coils
- Extends coil life
- Sold in pairs

#### LS COIL PACK HEAT SHIELD

Part #	Description
011001	LS Coil Pack Shield



**NEW**

### Golf Cart Muffler Shield Kit Yamaha 2007 & Up

During periods of warm weather driving or a few minutes of idling, the heat from the muffler can make the seat quite uncomfortable. DEI's wrap-around muffler shield kit contains the excess heat getting to the seat. In addition to keeping the seat cooler, the muffler shield also suppresses the sound and vibration, resulting in a cooler and quieter cart. Installation is easy with basic hand tools and can be performed with the muffler still on the cart.

- Reduces discomfort from excessive muffler heat
- Easy install - No need to remove muffler

#### GOLF CART MUFFLER SHIELD KIT

Part #	Description
010385	Muffler Shield Kit - Yamaha G29 Golf Cart 2007-2014
010386	Muffler Shield Kit - Yamaha G29 Golf Cart 2015 & up



**NEW**

### Golf Cart Under Seat Insulation Kit

Gas powered Golf Carts generate a large amount of heat under the seat. This heat can be felt while driving and be very uncomfortable. DEI has developed a 9 piece comprehensive kit to solve this problem. Precut for an exact fitment and made from high quality thermal acoustic foam that is easy to install. Enjoy a cooler and quieter ride and make your Golf Cart more enjoyable to drive.

- Reduces discomfort from excessive heat
- Pre-cut for an exact fit
- Cooler, quieter ride
- Yamaha G Series Golf Carts 07-up

#### GOLF CART UNDER SEAT KIT

Part #	Description
010377	Golf Cart Under Seat Insulation Kit



**NEW**

### Quarter Midget Fuel Line Kit

DEI Fuel Line Cover Kit is a safe and easy way to make sure you pass technical inspection for any USAC - 1/4 Midget Race.

- Includes 1-1/2' of 3/8" ID silicone covered glass braided sleeving. 4 Heat Shrink Sleeves
- Meets USAC requirements for fire proof fuel line cover as stated in current rule book
- Rated to a max temp of 520°F for 136 hours

#### QUARTER MIDGET FUEL LINE KIT

Part #	Description
010634	Quarter Midget Fuel Line Kit



## Versa Shield™ Starter Shield

Versa-Shield™ was designed to protect starters from potential failure caused by under hood heat soak conditions. Made from an aluminized heat reflective material backed with a hi-temp rated glass fiber insulation barrier, Versa-Shield is capable of reflecting radiant heat up to 2000°F. Direct heat up to 500°F

- Universal-trim length to size
- Edges close with hook & loop design
- Protect master cylinders, cool cans, distributors, fuel pumps & more
- No need to remove starter for installation in most cases

### VERSA SHIELD STARTER SHIELD

Part #	Description
010402	7"W x 24"L

### MINI VERSA SHIELD STARTER SHIELD

Part #	Description
010384	5-1/2"W x 16-1/2"L



## Ultra 47™ / ONYX™ Shield

Designed for severe duty use, Ultra Shield MA offers the highest level of protection. Constructed of two layers of material, a highly reflective outer layer combined with a high heat inner layer. Able to withstand direct heat of up to 1350°F, Ultra 47 Shield is the perfect choice for high heat applications where engine heat soak is a problem.

- 7"W x 24"L Size
- Hook & loop fastening system
- Length can be trimmed to size
- Available in Aluminum & Black ONYX

### ULTRA 47 / ONYX SHIELD

Part #	Description
010235	Ultra 47 Shield - 7"W x 24" L
010236	ONYX Starter Shield - 7"W x 24" L



## Cell Saver™ / Battery Insulation Kit

Batteries are very susceptible to heat and vibration that could cause premature failure and hazardous leaks. Cell Saver is very capable of damping vibration and will absorb and neutralize any damaging leaky battery acids. Cell Saver is easy to install and excess material can be trimmed to accommodate most battery sizes and shapes.

- Protects batteries from harmful radiant heat
- Material withstands up to 2000°F radiant heat
- Traps & neutralizes harmful battery acid
- Clean finished look with easy installation

### CELL SAVER

Part #	Description
010480	40"L x 7" W

NOTE: Includes 40" x 7" insulation material, 12" x 7" treated base mat and edge sealing tape



## Cool Cover™ / Air Tube Cover Kit

Designed to prevent air tubes from becoming heat sinks. Made of heat treated glass fiber with a reflective coating, Cool Cover will reflect radiant heat from air tubes and promotes a cooler, denser, more powerful air charge. With a unique full length hook & loop closure design, Cool Cover can be removed in seconds.

- Reflects heat from air tubes
- Promotes cooler air charge for added power
- Installs & removes in seconds for show or go
- Fits up to 4" diameter tubing

### COOL COVER

Part #	Description
010417	Up to 4" O.D. x 36"L

NOTE: Includes 14" x 3ft insulation material, 2" x 36" strip of heat reflective sealing tape



## Cool Cover™ GOLD / Air Tube Cover Kit

High temp Metalized Polyimide lamination, bonded to a robust 20oz heat treated glass fiber base material, Cool Cover GOLD will reflect radiant heat from air tubes and promotes a cooler, denser, more powerful air charge. With a unique full length hook & loop closure design, Cool Cover GOLD can be removed in seconds.

- Reflects heat from air tubes
- Promotes cooler air charge for added power
- Installs & removes in seconds for show or go
- Fits up to 4" diameter tubing

### COOL COVER GOLD

Part #	Description
010486	Up to 4" O.D. x 28"L



### Universal Catalytic Converter Shield

Replace your missing or rattling catalytic converter shield. Allows you to pass inspections and reduce heat coming from your converter. Easy to install universal design fits most converters. Includes all installation hardware and instructions

- Easily bends to conform to converter
- Universal design fits most converters
- No need to replace your converter if all you need is a new heat shield

Shield measures 12" x 8"

#### CATALYTIC CONVERTER SHIELD

Part #	Description
011003	Universal Catalytic Converter Shield



**NEW**

### Form-A-Barrier

Light weight, formable rigid shield provides excellent thermal protection up to 1300°F with minimal gap of 1 inch to heat source. Can be formed or bent by hand to conform to odd shapes. Mechanically fasten with pins, screws or bolts. Resistent to most automotive chemicals. Multiple applications include firewalls, interiors, engines and other areas.

- Easily formable
- Both sides have reflective material
- Protection up to 1300°F
- 12" x 12" squares

#### HARD SHIELD

Part #	Description
011002	12" x 12"



**NEW**

### Grommet and Locking Tie Kit

When mounting heat shields or other materials it can be difficult to make it look professional. DEI has put together a complete Grommet and Tie kit to make any install look first class. Included in the kit are 24 - 3/8" grommets, Grommet eyelet tool, Six 20" long stainless locking ties and our handy locking tie tightening tool. Everything you need for a professional looking installation.

- Universal kit for mounting heat shields, and other heat barrier materials
- Includes FREE Locking Tie Tool

#### GROMMET KIT

Part #	Description
010223	Grommet Kit



**NEW**

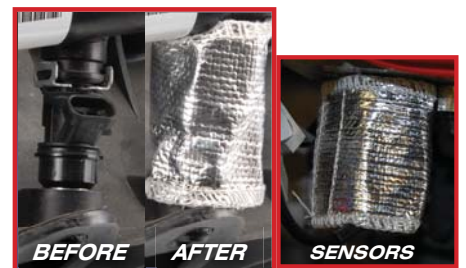
### Fuel Injector & Sensor Covers

Available in 2, 4, 6 and 8 packs for any engine configuration, these covers wrap around fuel injectors or sensors and will reflect radiant heat away from them, preventing heat soak and vapor lock. Simple split design allows easy installation without having to remove the injector or sensor. Simply wrap around and close with built in hook and loop fastening edges.

- Universal - fits most fuel injectors & sensors
- Cooler injectors operate more efficiently
- Prevent vapor lock & heat soak

#### FUEL INJECTOR / SENSOR COVERS

Part #	Description
010380	2 pack
010381	4 pack
010382	6 pack
010383	8 pack



### Reflective Fuel Can Covers

Most race fuel manufacturers recommend covering race fuel and limiting exposure to the sun. This is critical when it comes to the new generation of oxygenated fuels. Now you can keep fuel temperatures stable and extend the pot life of expensive race fuels. No more stuffing the cans under blankets or moving them around all day to avoid the sun. DEI Fuel Can Covers are designed to easily slip over cans and drums that most race fuels come in. These durable covers reflect away radiant heat and keep your fuel cool!

- Keeps race fuel cans cool
- Easy on & off
- Recommended by race fuel manufacturers
- Reduces fuel temperatures up to 23%

#### FUEL CAN COVERS

Part #	Description
010033	5 gallon square Scribner <b>NEW</b>
010467	5 gallon round metal fuel can
010471	5 gallon square fuel jug
010484	54 gallon metal fuel drum
010498	11 gallon fuel dump can
010489	5 gallon round plastic <b>NEW</b>





# REFLECTIVE HEAT BARRIERS

## Floor & Tunnel Shield II™

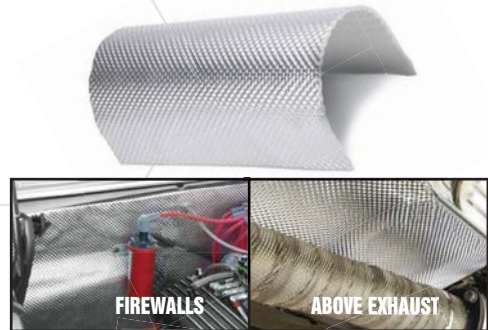
Designed to withstand direct temperatures up to 1750°F, Floor & Tunnel Shield II is the ultimate solution to block radiant heat from entering a vehicles interior and protect under hood components. Constructed from 10 mil aluminum bonded to a finely woven layer of high temperature resistant glass fiber.

- Wind & water will not affect adhesive
- Minimum clearance required, only 3/16" thick
- Easily shape, trim, peel & stick
- Aggressive self-adhesive backing

NOTE: DEI Cool Tape is suggested for sealing edges & seams

### FLOOR & TUNNEL SHIELD II

Part #	Description
050501	21" x 2 ft (3.5 sq ft)
050502	21" x 4 ft (7.0 sq ft)
050503	42" x 4 ft (14.0 sq ft)
050503-16	10" X 10" (.83 sq ft)



### Also available without adhesive backing

### FLOOR & TUNNEL SHIELD II W/O ADHESIVE

Part #	Description
050506	42" x 24" W/O Adhesive (7 sq ft)
050520	42" x 48" W/O Adhesive (14 sq ft)



## Form-A-Shield™

Capable of withstanding direct heat up to 1400+ F, Form-A-Shield can be applied to exhaust headers, manifolds, turbo housings and downpipes dramatically reducing radiant exhaust temperatures. Formed from 10 mil dimpled aluminum bonded to a high temperature rated Basalt thermal barrier material, Form-A-Shield can be applied directly to hot surfaces helping to lowering under hood temperatures while keeping more heat in the exhaust system.

- Extremely pliable & forms to many shapes & configurations
- Durable & resistant to oil & chemical spills
- Withstands direct heat up to 1400°F +
- Superior insulator anywhere near the path of exhaust pipes
- Can be applied direct to hot surfaces
- Fasten with straps, clamps or DEI Locking Ties

NOTE: Use DEI Adhesive Spray (# 010490) with Form-A-Shield on non-hot areas to serve as a heat barrier / reflector

### FORM-A-SHIELD

Part #	Description
010516	42" x 48" (14.0 sq ft)
010517	21" x 48" (7.0 sq ft)



## Heat Screen™ Aluminized Mylar Radiant Matting

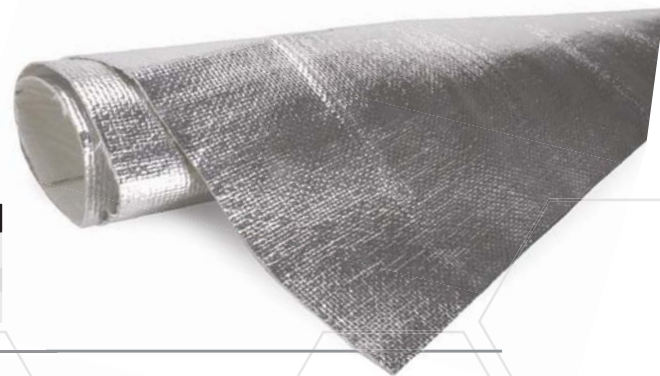
An excellent method for reflecting unwanted heat from areas and surfaces needing protection. With a thickness of only .060 inches, Heat Screen requires minimal clearance and is capable of withstanding 2000°F of radiant heat. Ideal for protecting body panels, floor boards, gas tanks, fairings and for use under carpeting.

- Excellent protection for painted surfaces
- Withstands 1200°F of direct heat
- Can be secured with adhesive or fasteners
- Trim to desired size

NOTE: Use with our 010490 Spray adhesive

### HEAT SCREEN

Part #	Description
010401	36" x 40" (10 sq ft)
010401B	36" x linear foot bulk



## Heat Screen™ W/Adhesive Backing Aluminized Mylar Radiant Matting

Heat Screen with Adhesive can withstand 2000°F of radiant heat and 1200°F of direct heat making it the perfect choice to protect from heat penetration damage. We have applied our Hi-Temp adhesive for you making installation fast and simple.

- Backed with high temperature, pressure sensitive adhesive
- Heavy weight glass fiber with aluminum face
- Flexible & easy to install
- Peel & stick

### HEAT SCREEN W/ADHESIVE

Part #	Description
010399	36" x 20" (5 sq ft)
010400	36" x 40" (10 sq ft)
010090	36" x linear foot



# REFLECTIVE HEAT BARRIERS



## Heat Screen GOLD™ Metalized Radiant Matting

Manufactured from our high temperature Metalized Polyimide lamination, bonded to a robust 20oz heat treated glass fiber base material, Heat Screen Gold will protect and keep components cool in the most demanding applications. Able to reflect direct heat up to 800°F makes this the perfect choice to keep critical components air intakes and interiors cool and protected. Heat flux test shows 36% reduction of temperature.

- 20oz. heat treated base glass
- Base glass radiant heat to 1100°F
- .031" thick
- Mechanically fasten or use DEI Hi-Temp Adhesive 010490

### HEAT SCREEN GOLD

Part #	Description
010913	36" x 40" (10 sq ft)
010919	24" x 24" (4 sq ft)



## Reflect-A-GOLD™

Reflect-A-GOLD is a metalized polyamide polymer laminated to a light weight 5.0oz glass fiber-glass cloth with a high temperature pressure sensitive adhesive for use in extreme temperature swing environments. Lightweight and easy to apply and remove.

- For firewalls, bulkheads, engine covers, floors, seat bottoms & more
- Handling continual temps up to 850°F
- Resists UV degradation for long-term performance
- Adhesive protected by a release liner rated up to 325°F
- .0065" thick

### REFLECT-A-GOLD

Part #	Description
010390	24" x 150 ft Roll
010391	12" x 12" Sheet
010392	12" x 24" Sheet
010393	24" x 24" Sheet
010394	1-1/2" w x 15 ft Roll
010395	1-1/2" w x 30 ft Roll
010396	2" w x 15 ft Roll
010397	2" w x 30 ft Roll



NOTE: Available in custom cut lengths in widths up to 24"



## Under Hood™ Thermal Acoustic Lining

Designed primarily for engine compartments as a way to greatly reduce heat and noise with a simple and easy peel and stick application. Made of 3/4" thick, high quality, industrial acoustical grade foam with a reinforced reflective aluminum covering, Under Hood Thermal Acoustic Lining insulates the underside of hoods and serves as a sound deadener while protecting paint finishes.

- Insulate from heat while reducing noise & vibration
- Self adhesive - peel & stick application
- Protects paint finishes
- 3/4" thick • Temp range: -45°F to 275°F

### UNDERHOOD

Part #	Description
050510	32" X 54" (12 sq ft)



"No matter what you do to a car, it's only going to be as good as how well it's insulated, and how tight it is when it's done. That's why we use DEI and Boom Mat in all of our builds."

- JEREMY GERBER

CO-OWNER - ROADSTER SHOP





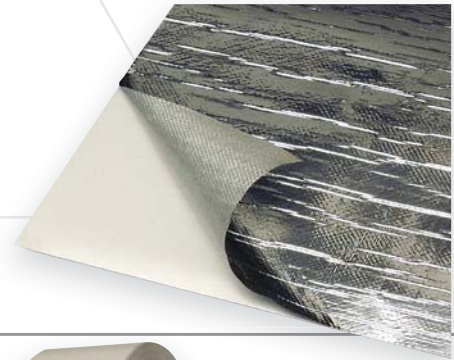
## Reflect-A-Cool™

Reflect-A-Cool offers high heat reflectivity to protect temperature-sensitive components and materials against heat damage and hot spots. Made of an aluminized reflective foil, backed with a base layer of glass fiber, it is able to withstand continuous temperatures of 400°F.

- Protect wires, cables, hoses, pipes & tubing from radiant heat sources
- Self-adhesive backing with release liner
- Radiant heat protection up to 2000°F
- Moisture & solvent resistant

### REFLECT-A-COOL

Part #	Description
010412	36" x 48"
022004	36" x linear foot
010460	12" x 12"
010461	12" x 24"
010462	24" x 24"



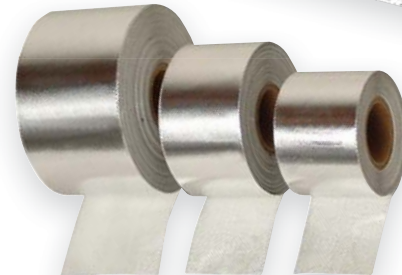
## Cool Tape™

Cool Tape is a flexible and super strong self-adhesive thermal insulating tape capable of protecting up to 2000°F of radiant heat. Made of one mil aluminized material bonded to a woven glass fiber matting, Cool Tape is an ultra light weight solution for wrapping wires, cables, hoses, fuel lines, covering seams and many other uses.

- Withstands direct heat up to 400°F
- Use to secure panels, seal air boxes, wrap wiring & more
- Strong self-adhesive backing

### COOL TAPE

Part #	Description
010408	1-1/2" x 15 ft roll
010413	2" x 60 ft roll (Cool Tape Plus)
010416	1-1/2" x 30 ft roll
010468	2" X 30 ft roll



NOTE: Perfect for giving DEI Reflect-A-Cool, Heat Screen and Floor & Tunnel Shield-II a finished edge look!

## Heat Resistant Sealant

Developed by Dow Corning® for extreme-duty aerospace applications, this sealant bonds to almost all surfaces and an ideal method of encapsulating and protecting applications where parts must perform at high temperatures. Unlike other sealants, it will not sag or run on overhead or on side wall applications.

- For use with fiberglass, metal, wood, rubber, plastic & more
- Withstands continuous temps up to 500°F / 600°F Intermittent
- Made from 100% silicone & remains flexible
- Peel strength of 20 lbs.

### HEAT RESISTANT SEALANT

Part #	Description
010410	3 oz tube w/application nozzle



## Hi-Temp Spray Adhesive

Hi-Temp Spray Adhesive provides high strength adhesion and bonds a wide variety of materials, including trims, foams, fabrics and more. It has a specially designed three-way adjustable valve allowing the user to select the spray pattern that best suits the job.

- Dries quickly & clear
- Forms a water-resistant bond
- High temp resistant up to 160°F (71°C)
- High bonding strength for many materials

NOTE: Ideal for adhering DEI Heat Screen and various Boom Mat under carpet products!

### HI-TEMP SPRAY ADHESIVE

Part #	Description
010490	10 oz can (12 per master carton)



## Lite-N-BOLTZ Plan-O-Gram

Combining License Plate and Lighted Button Head Bolt lighting kits, this display features the nine fastest moving LED part numbers.

- Universal applications-multiple uses
- Includes display header card
- Display measures 9-1/2" L x 24" H (w/ header card)

### LITE-N-BOLTZ PLAN-O-GRAM

Part #	Description
030100	LED Lite'N Boltz Plan-O-Gram



### Quick Fix Tape™

Quick Fix Tape bonds to itself and forms a waterproof permanent seal. It's ideal for emergency hose repairs, non-slip grip surface for tools, electrical connections and a leak sealer are among its many uses and does not leave a sticky residue. Silicone compound engineered at 700psi tensile strength with insulating capabilities up to 8,000 volts. Stretches to three times its length for a simple stretch and wrap application.

- Withstands temperatures from -65°F (-54°C) to 500°F (260°C)
- Seal hoses, bundle & wrap wires, weatherproof connections & more
- Can be applied to wet surfaces
- Permanent air / liquid tight seal

#### QUICK FIX TAPE

Part #	Description
010491	Black (1" wide x 12 ft roll)



### Speed Tape™

Speed Tape has multiple uses including race applications, temporary damage repairs and taping body seams to name a few. Speed Tape tears straight and easy every time and available in eight colors as well as the popular checker-board design.

#### SPEED TAPE

Part #	Color	Part #	Color
060101	Black	060105	Yellow
060102	White	060106	Purple
060103	Red	060107	Green
060104	Blue	060108	Orange
060202	Checker-board		



2"x 90ft Rolls (Checker-board 2"x 45ft)

NOTE: Also available in a countertop display pack (Part # 060100)  
18 rolls - 2 of each color



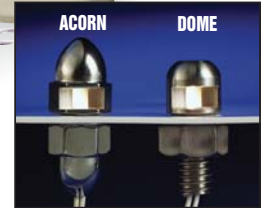
### LED Lite-N-BOLTZ™ License Plate Lighting Kits

LED License Plate Lighting Kits with their right-angle LED, are extremely efficient and emit a much higher degree of light in a desired location than incandescent lamps. Since there's no filament that can be damaged, LEDs are incredibly durable-virtually shock and vibration-proof.

- Offer superior lighting & meets legal requirements without compromising great looks
- Made of high-grade stainless steel with clear waterproof epoxy lens
- Perfect for license plate relocation projects only using .30MA current, 0.36 watts

#### LITE-N-BOLTZ

Part #	Description
030301	Satin License Plate Kit Dome Head (4-pc.)
030302	Satin Dome Head (2-pc.)
030309	Polished License Plate Kit Dome Head (4-pc.)
030310	Polished Dome Head (2-pc.)
030311	Polished Acorn Shape Head (2-pc.)



### LED Lite-N-BOLTZ™ Accent Lighting Kits

LED Lighted Button Head Bolts, with hex head opening, can be used anywhere accent lighting is desired. There are countless applications for accent lighting including hot rods, street rods, motorcycles, boats, ATVs, RVs, personal watercraft, pickup trucks, 4x4's, 18-wheelers and even industrial applications. 12-Volt Lighted Button Head Bolts contain two lights per package, measure 5/16" x 3/4" and are made from high grade stainless steel and available in six vibrant colors, 9/16" outside diameter of button head.

#### LITE-N-BOLTZ ACCENT LIGHTS

Part #	Color	Part #	Color
030303	White (2-pk)	030306	Green (2-pk)
030304	Red (2-pk)	030307	Blue (2-pk)
030305	Amber (2-pk)	030308	Purple (2-pk)



## Reflective Arm Sleeve

In Go-Kart racing the racer's arm can be in close proximity to the engine and exhaust. The heat alone from the exhaust can be uncomfortable for drivers. To reduce the potential risk of burns, thermal specialist, DEI, now offers added protection with its Go-Kart Reflective Arm Band Sleeve. Heat resistant, the thermal sleeve reflects heat and improves the drivers comfort. Sleeve covers from forearm to top of shoulder.

- Designed for go-kart racing
- Easy slip on/off
- Protects against burns and heat from exhausts
- Light weight & flexible

### REFLECTIVE ARM SLEEVE

Part #	Description
010866	Small Reflective Arm Sleeve
010861	Medium Reflective Arm Sleeve
010867	Large Reflective Arm Sleeve



## Hub & Rotor Cover

- Protection from hot brake drums and rotors
- Prevents potential of serious burns or cuts
- Aluminized mylar adhered to glass fiber matting
- Withstands 2000° F radiant / 500° F of direct continuous heat
- Protection against dirt, dust & airborne particles around track or shop
- Measures 14" L x 7" W x 13" H

### HUB & ROTOR COVER

Part #	Description
010485	Hub & Rotor Cover



## Dyno Strap Heat Guard

- Protect dynamometer tie-down straps from burn-through caused by exhaust exit heat
- Made of a hi-temp resistant aluminized mylar material
- Withstands 500° F direct / 2000° F radiant heat
- Easily slips over dyno tie down strap
- 36" long x 5" wide

NOTE: Not for direct pipe contact

### DYNO STRAP HEAT GUARD

Part #	Description
010466	Dyno Strap Heat Guard



## Pit Crew Safety Kit

### Kit Includes:

#### Safety Glasses

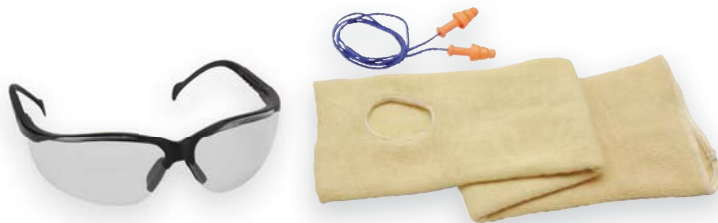
- Wrap-around style
- 100% UV protection & scratch resistant clear lenses

#### Safety Sleeve (18")

- Kevlar™ with superior cut, slash & heat resistance
- Thumb-hole sleeve extends past wrists
- Protects to 900° F

#### Ear Plugs

- Single-size fits all
- Noise Reduction Rating of 25 dB
- Attached with a breakaway cord



### PIT CREW SAFETY KIT

Part #	Description
070540	Pit Crew Safety Kit

### AVAILABLE SEPARATELY

Part #	Description
070520	Safety Sleeve (single)
070521	Safety Sleeve (pair)
070530	Ear Plugs

## Safety Glasses

Black-frames with impact resistant lenses, wrap-around style protective eyewear meets ANSI Z87 general purpose requirements offering 100% UV protection, scratch resistant and available in three different color lenses.

### SAFETY GLASSES

Part #	Description
070513	Clear lenses
070514	Yellow lenses
070515	Smoke lenses





# RADIATOR RELIEF™

## High Performance Coolant Additives

All Radiator Relief coolant additives are specially formulated to reduce the bubbles that form on hot metal surfaces, such as cylinder heads, known as surface tension. Radiator Relief improves heat transfer from the engine to the coolant while reducing cavitation and scaling.

### Radiator Relief™

Radiator Relief is an excellent method of treating cooling systems as a preventive step to help avoid overheating, electrolytic (electrolysis) and chemical corrosion and is compatible with all coolant additives and anti-freeze mixtures. Both an anti-foaming agent and corrosion inhibitor which balances the negative acidic effects that can develop over time are also included. Radiator Relief is also safe to use with all types of radiator materials including cast iron, copper, brass and aluminum.

- Reduces engine temps up to 30°F
- Includes anti-foaming agent
- Corrosion inhibitor
- Reduces pre-existing scale build-up
- Compatible with all types of anti-freeze
- Recommend 1oz per quart of coolant

#### RADIATOR RELIEF

Part #	Description
040200	16 oz bottle
040104	32 oz bottle

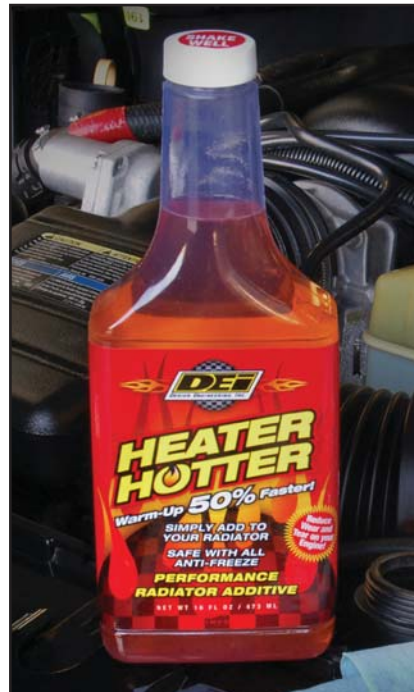


### Heater Hotter™

- Accelerates transfer of heat from engine to heater
- Improves engine warm-up time up to 50%
- Safe with all types of anti-freeze
- Helps reduce engine wear

#### HEATER HOTTER

Part #	Description
040206	16 oz bottle



### For Diesels™

- Blended for extreme use
- Decrease coolant temp up to 30°F
- Quicker warm-up
- Helps reduce engine wear
- Recommend 1oz per quart of coolant

#### RADIATOR RELIEF FOR DIESELS

Part #	Description
040204	16 oz bottle



### For TIG Welders

Specially formulated to enhance cooling system performance by maximizing the thermal transfer ability of the coolant/water solution or plain water. Environmentally friendly TIG Chill is safe to use in all systems and with all types of coolants.

#### FOR TIG WELDERS

Part #	Description
040209	TIG Chill



## CRYO2™

THE POWER OF COOL

### Cryogenic Intake Systems

**Cryo2™ is a revolutionary product** designed to reduce air and fuel temperatures thus creating more power. Through the science of aerodynamics and cryogenics, Design Engineering has developed a system to harness the cryogenic properties of liquid CO<sub>2</sub> to lower the intake charge temperature by up to 50°F.

The system is modular and can be easily expanded. The CryO<sup>2</sup> system provides two methods for cooling the air charge and one for cooling fuel, all utilizing the same burst of liquid CO<sub>2</sub>. CO<sub>2</sub> is readily available at any welding or medical supply locations or where paintball guns are charged. The Power of COOL - Welcome to the future of power.

CO<sub>2</sub> is readily available at welding shops, medical supply locations, or at paint ball filling stations.

### CRYO<sup>2</sup> Intercooler Sprayer Kit

- Enhances intercooler thermal transfer ability
- Lowers air temperatures by as much as 35%
- Improves intercooler efficiency by as much as 50%
- Non-injectable system - Ability to run more boost safely
- Straight forward, easy bolt on installation
- CO<sub>2</sub> is less expensive to refill than nitrous

**Kit includes:**

- 10 lb. tank and brackets
- Cryogenic solenoid valve
- 14 ft. stainless steel braided supply line
- Arming, activation, & WOT switches
- Includes CO<sub>2</sub> fittings & electrical hardware
- 16" x 5" front-mount intercooler sprayer & hardware

**INTERCOOLER SPRAYER KIT**

Part #	Description
080108	Intercooler Sprayer Kit



### Intercooler Sprayers

Cryo<sup>2</sup> Intercooler Sprayers mount directly to the front of air-to-air intercoolers and serves as a way to vent the liquid CO<sub>2</sub> directly on to the cooling fins thus, enhancing the performance of the intercooler by more than 50% eliminating intercooler heat soak. This component must always be the last in the CryO<sup>2</sup> system as it vents the liquid CO<sub>2</sub> charge.



Fittings & hardware included for multiple mounting options

**INTERCOOLER SPRAYERS**

Part #	Description
080130	Front Mount - 16" x 5"
080131	Front Mount - 8" x 4"
080134	Front Mount - 19" x 9"



### CRYO<sup>2</sup> Tank & installation Kit

The foundation of every CryO<sup>2</sup> system

**Kit includes:**

- 10 pound CO<sub>2</sub> tank
- Tank mounting brackets (10lb Dia. Max 7.375" - Min. 6.875")
- Cryogenic solenoid valve
- 14 ft. stainless steel braided supply line
- Arming, activation, & WOT switches
- Includes CO<sub>2</sub> fittings & electrical hardware

**TANK & INSTALLATION KIT**

Part #	Description
080102	10 lb. Tank and Installation Kit
080103	10 lb. Spare Tank
080105	10 lb. Installation Kit Only (without tank)

NOTE: Kit necessary to utilize CryO2 components. Only one kit is needed to operate all components  
 NOTE: • 10 lb. tank: 6-3/4" Dia. base, 20" tall



## Air Intake & Intake Bulbs

The CryO<sup>2</sup>™ patented\* Air Intake consists of an aerodynamically designed bulb with a cryogenic chamber mounted in a short segment of air tube. Air is cooled as it passes over the bulb, resulting in a cooler, denser, more powerful intake air charge. Testing showed up to a 50°F reduction in intake air temperature.

- Designed for turbocharged, supercharged, & N/A applications
- Multiple units increase results
- Large 4 1/2" O.D. for Diesel & hi-power applications
- Complete with silicone coupler, hose clamps, vent cap, & braided line

### AIR INTAKE & INTAKE BULBS

Part #	Description
080110	Air Intake – 3" O.D.
080111	Air Intake- 2 1/2" O.D.
080112	Air Intake- 4" I.D. / 4 1/2" O.D.
080117	Air Intake Bulb 1.75" - Bulb & legs only
080119	Air Intake Bulb 1.25" - Bulb & legs only

\* U.S. Patent Number: 6,675,781



## Intercooler Water Sprayer

- Universal kit designed for all air-air I/Cs & heat exchangers
- Use with or without our CryO<sup>2</sup>™ Intercooler Sprayers
- Light-weight construction
- 1.25 quart capacity
- Complete kit including all hardware & instruction

### INTERCOOLER WATER SPRAYER

Part #	Description
080140	Intercooler Water Sprayer Kit



## Fuel Chiller System

The CryO<sup>2</sup>™ Fuel Chilling System takes fuel chilling to the next level! Four times more effective than "Cool Can" devices. Utilizes CO<sub>2</sub> for cooling, not ice. Internal tube/baffle design maximizes surface area complete with -4AN fuel fittings, -6AN fittings, mounting brackets, and hardware.

### FUEL CHILLER SYSTEM

Part #	Description
080125	Fuel Chiller System



## Purge Kits

A purge blast of CO<sub>2</sub> will turn heads, command attention and crank up the "wow" factor a few notches. Some suggested mounting locations for a CryO<sup>2</sup>™ single or dual purge valve include hood scoops, front grill, air vents and fender wells – anywhere inquisitive spectators will be sure to appreciate a new and different "cool" experience.

- Pre-assembled purge tubes
- Solenoid valve & fittings
- Stainless steel braided hose

### PURGE KITS

Part #	Description
080300	Single Purge Vent (Assembled Tube Only)
080301	Dual Purge Vent (Assembled Tubes Only)
080302	Complete Single Purge Kit (w/ hose & solenoid valve)
080303	Complete Dual Purge Kit (w/ hose & solenoid valve)



## Remote Push Button Switch

Precision made from the finest materials then meticulously tested to perform at the highest level possible. Great remote activation for any CryO2, nitrous system purge activation and remote start. A good option instead of mounted buttons.

Normally open switch state. Push and hold button to activate. (Is not a push on and push off type of switch) Soldered ends ready for any style terminal. Great for bumping starters from the engine bay, using auxiliary lighting, stop and start lap time data recordings, or any other push and hold to activate application.

- Use for CryO2, nitrous, purge or bump starting
- Hold to activate application



### REMOTE PUSH BUTTON CORD

Part #	Description
165031	Remote Cord Push Button Switch

## Adjustable Timer Switch

- Control the flow of CO<sub>2</sub> & extend bottle life
- Separately adjustable on time/off time controls
- 0.2 to 30 second adjustable duration range
- Includes Timer Switch, wiring, connection terminals & installation instructions.

### ADJUSTABLE TIMER SWITCH

Part #	Description
080203	Adjustable Timer Switch



## CryO2™ Components

### CRYO2 COMPONENTS

Part #	Description
080107	-4AN Tank Nut & Nipple to 320 CGA f
080135	Line Splitter (for dual IC sprayers or purges)
080200	Cryogenic Solenoid Valve
080201	Stainless Steel Braided Hose 14'-4AN f
080202	Stainless Steel Braided Hose 2'-4AN f & 1/8 NPT m
080204	Stainless Steel Braided Hose 1'-4AN f & 1/8 NPT m
080205	Stainless Steel Braided Hose 3'-4AN f & 1/8 NPT m
080206	Stainless Steel Braided Hose 5'-4AN f & 1/8 NPT m
080210	1/8 NPT f - 1/8 NPT f Brass Union
080211	1/8 NPT m Brass Connector Fitting
080213	-4AN Male x 1/8 npt f Fitting
080214	1/4npt f -4AN m Brass Fitting
080215	1/8npt m -4AN m Fitting
080216	"Y" block 1/8 NPT f all
080230	Full Wide Open Throttle Switch Kit
080231	Full WOT Switch Bracket
080232	Push Button Switch
080242	10 lb. Tank Mounting Bracket – short
080243	10 lb. Tank Mounting Bracket – tall
080250	Silicone Connector Sleeve Black 2.5" ID
080251	Silicone Connector Sleeve - Black 3" ID

NOTE: All CryO2 components are designed to work seamlessly with all CryO2 systems and kits. We create all of our components with the highest quality materials and the most stringent manufacturing processes.





## Interior Heat & Sound Control

Every car, truck, hot rod or homebuilt vehicle has a unique acoustic signature due to engine type, exhaust, tires, build quality as well as the effects caused by aftermarket accessories. This can create a hot, noisy, uncomfortable environment for the driver and passenger. Boom Mat has developed the highest quality materials to combat this problem, and to create a cool, comfortable interior for any vehicle.

**It's what the pros use.**

### Where to use...

Making an interior cool and comfortable is a multi-step process.

**1... Dampen vibrations on metal surfaces.** Use Boom Mat damping material covering 50% of all interior surfaces.

**2... Keep out the heat and noise.** Use Under Carpet Lite to block 85% of unwanted heat from engines, transmissions and exhaust systems while absorbing interior noises.

#### ROOF

##### D-MAT INSULATION

Block radiant heat and reduce noise

#### FIREWALLS

Damping Material to control vibration

Under Carpet Lite to absorb sound & block heat

Floor & Tunnel Shield II to block out heat before it enters the vehicle

#### HOOD

##### Under Hood Thermal Acoustic Liner

Protects hoods & paint from engine heat & reduces engine noise

#### FLOOR BOARDS • TRANS TUNNELS

Damping Material to control vibration

Under Carpet Lite to absorb sound & block heat

Floor & Tunnel Shield II to block out heat before it enters the vehicle

#### DOOR SKINS

Damping Material to control vibration

Heat Moldable to barrier out sound & moisture

Speaker Baffles Protects speaker & enhance sound

#### FENDER WELLS

##### BOOM MAT FLEX

Protects inner fenders & dampens vibrations

#### SPEAKER DECK REAR BULK HEADS

Damping Material to control vibration

Under Carpet to barrier out sound

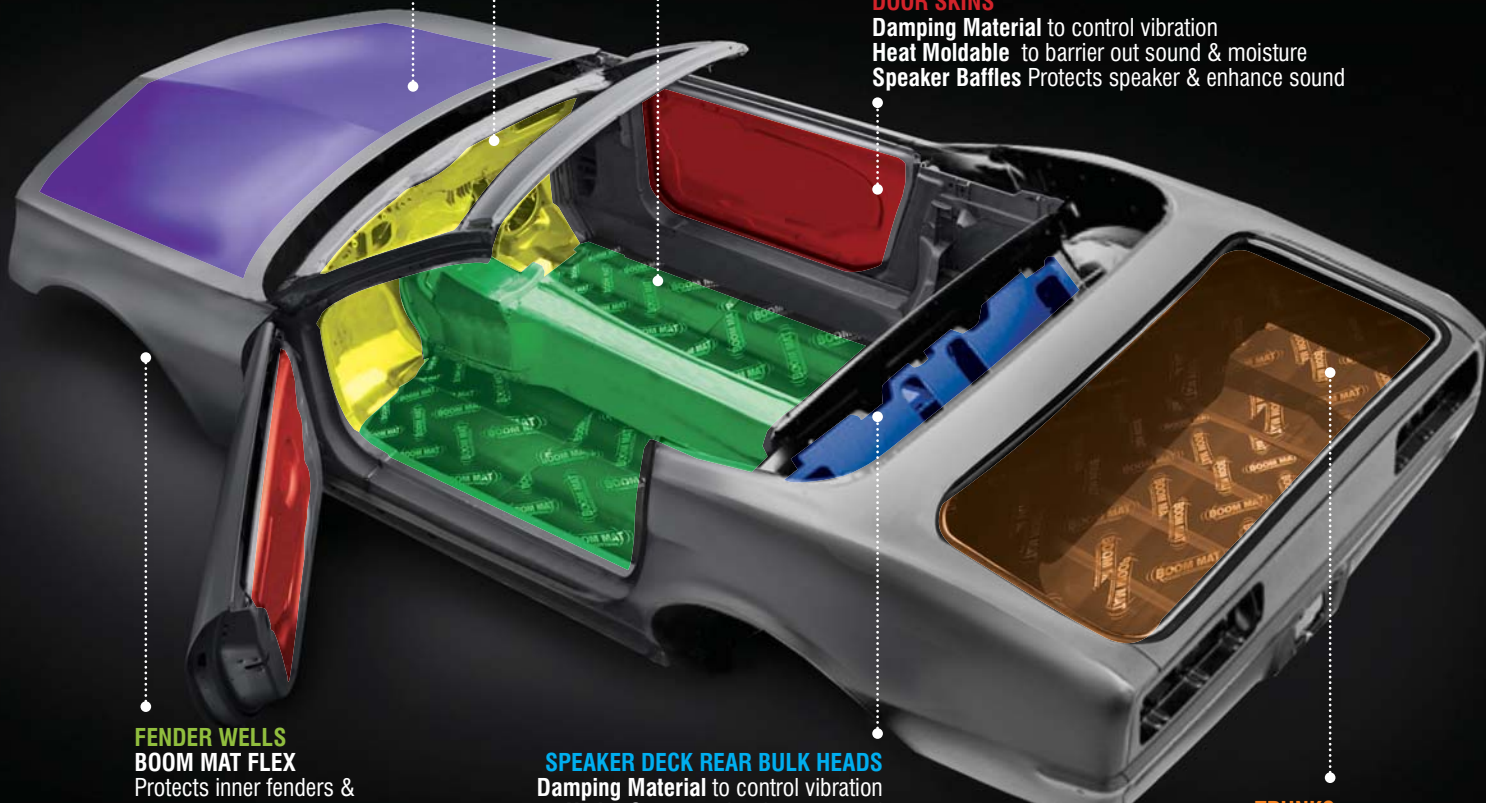
Speaker Baffles Protects speaker & enhance sound

#### TRUNKS

Damping Material to control vibration

Leather Look to barrier out sound

Under Carpet to barrier out sound





## BOOM MAT DAMPING MATERIAL

### Vibration Damping Material Boom Mat (2mm) & Boom Mat XL (4mm)

Premium quality damping material in two thicknesses; 2mm and 4mm, providing extreme noise damping for the most demanding commercial and sound competition applications. Interior panels vibrate and generate noise. Boom Mat stops that noise by trapping it between our thick, 4 mil aluminum stiffening top skin, and the asphalt free, pure butyl, noise constraining layer.

Plus worry-free no sag adhesion to any interior surface, vertical or overhead, even in the most demanding of temperature extremes. Those quality components are what make Boom Mat Vibration Damping Material require only 25-50% coverage to get the job done. This saves weight, material cost and installation time.

- Easy-Peel plastic release liner - Not paper backing that tears
- Enhances stereo performance & sound
- Gives you a quiet & comfortable interior
- Minimal prep & install time
- Performs in extreme temperatures



#### 2MM BOOM MAT

Part #	Description
050200	12" x 12-1/2" (2 sheets) (2.1 sq. ft.)
050202	12" x 12-1/2" (4 sheets) (4.2 sq. ft.)
050204	12" x 12-1/2" (8 sheets) (8.3 sq. ft.)
050206	12-1/2" x 24" (6 sheets) (12.5 sq. ft.)
050210	12-1/2" x 24" (10 sheets) (20.8 sq. ft.)
050212	12-1/2" x 24" (20 sheets) (41.7 sq. ft.)
050214	12-1/2" x 24" (30 sheets) (62.5 Sq Ft)

#### 4MM BOOM MAT

Part #	Description
050221	12-1/2" x 24" (2 sheets) (4.2 sq. ft.)
050222	12-1/2" x 24" (5 sheets) (10.4 sq. ft.)
050223	12-1/2" x 24" (10 sheets) (20.8 sq. ft.)
050224	12-1/2" x 24" (15 sheets) (31.25 sq. ft.)

Use as a first layer to control noise and dampen vibrations



The Roadster Shop uses DEI and Boom Mat products to control heat & sound in all their award winning builds.

**INFERNO Camaro**  
Goodguys Street Machine of the Year  
GoodGuys Gold Award  
SEMA Top 10



### Boom Mat Spray-On Damping Material

Spray-On damping is designed to reduce the vibration in hard to reach areas such as trunk interiors, fender wells, undercarriage, body panels, rear quarters and inside door panels.

- Lets you get into hard to reach areas
- Can be painted to match any color scheme
- Covers a huge 20 sq. ft. area
- Will seal out moisture preventing rust
- Saves time with a quick & easy install



#### BOOM MAT SPRAY-ON

Part #	Description
050220	18oz can 6 per master carton



Perfect for hard to reach areas where Boom Mat sheets are difficult to apply

PAINTABLE FINISH



## Vibration Damping / Speaker Performance Speaker Upgrade Kit Two Speaker Kit

Boom Mat Speaker Upgrade Kit is the perfect solution for quickly improving speaker sound and performance by reducing vibrations and improving acoustics. Simply remove speaker, apply Boom Mat on metal mounting surface, and re-install speaker. It's that simple!

- Eliminate squeaks, rattles & improve acoustics
- Flexible – can be applied to irregular surfaces
- Unaffected by temperature extremes
- Works great on steel, fiberglass or plastic
- Easily trim to size, peel & stick



### Kit Includes:

4 - 6" x 12.5" (2.1 sq ft) sheets of Boom Mat Damping Material.

#### SPEAKER UPGRADE KIT

Part #	Description
050199	Speaker Upgrade Kit



Remove speaker, apply material, re-install speaker

## Vibration Damping / Fender protection Flex Damping Material

Designed for applications that require a damping material that can conform to odd shapes and tighter bends than our standard Boom Mat. Boom Mat Flex can be used to form around tight curves, used inside wheel wells, around tubing and pipes and other areas where the standard Boom Mat Aluminum may not conform easily. Made from the same high quality 2.5mm thick Butyl rubber bit with a clear poly surface that allows it shape around any surface.

- Conforms to odd bends and tight curves
- 2.5mm thick butyl with clear poly surface
- Great for wheel wells and around tubing & pipes
- 12" x 12" squares



#### FLEX DAMPING MATERIAL

Part #	Product Description
050225	4 - 12"x 12" squares (4 sq ft)

Designed to conform to odd bends and tight curves

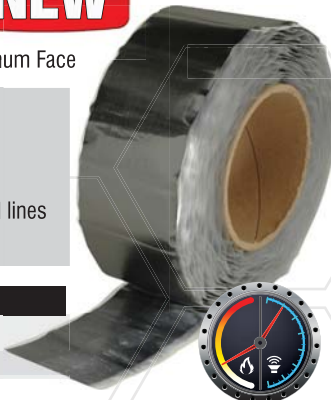


## Boom Mat Tape

**NEW**

2mm thick Butyl with .004" Black Aluminum Face

- Easy to remove clear release liner
- Applications include:
- Covering Seams and gaps
- Spot coverage for vibration
- Secure and protect cables, wires and lines
- Easy to Use



#### BOOM MAT TAPE

Part #	Description
050215	2" x 20ft roll

## Boom Mat Prep Spray

**NEW**

Seals and converts rusty metal and iron into the ideal primed surface ready for Boom Mat installation.

- Great primer to convert rust and iron
- Dries to a black paintable surface
- Great for body rust, trailers & more



#### BOOM MAT PREP SPRAY

Part #	Description
050491	16oz can



# BOOM MAT INSULATION & SOUND ABSORPTION

## Interior Insulation & Sound Absorber Under Carpet Lite

Under Carpet Lite - UC Lite is a light weight, superior thermal insulating and sound absorbing material. This 1/2" thick multi-layer, high tech composite material is designed to be extremely flexible and easy to install. Self extinguishing and is .500" thick, UC Lite provides relief from scorching summer heat and brutal winter temperatures while absorbing annoying road, tire and exhaust noise. All in one economical, light weight insulating solution.

- Comfortable interior at any temperature
- Quick & easy installation
- Enhanced stereo performance & sound
- Economical insulating solution
- Light weight for high performance applications
- Density .70Kg/m<sup>2</sup>

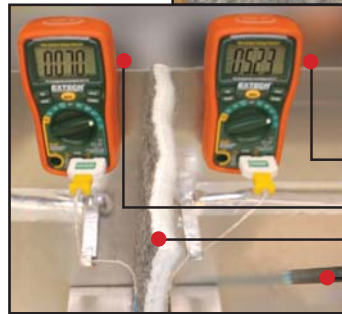


Use as a second layer to block 85% of heat and absorb sound.



### UNDER CARPET LITE

Part #	Product Description
050110	24" X 70" (11.6 sq. ft.)
050111	48" X 70" (23.3 sq. ft.)
050112	BULK Linear ft. X 70" W
050113	70" X 72" (35 sq. ft.)



**Insulates up to 85% of unwanted heat!**

- 523° F unprotected side temp
- 70° F UC Lite protected side temp
- Under Carpet - UC Lite**
- Heat Source



**Goalsby Customs builds winners. They use DEI and BoomMat to control the heat and sound in them.**

**1969 Ford Mustang Crowned 2016 Street Machine of the Year**



## Interior Insulation & Sound Absorber D-Mat Insulation

Advanced Thermal-Acoustic insulation designed for under head liners, doors, package trays and other areas. Extremely light weight and pliable D-Mat is the perfect choice for these areas. At only 12MM thick and compressible it can be used under head liners providing thermal protection keeping your interior cool. Made from a polymer blend with a scrim backing D-Mat can be used in applications up to 325 F while showing up to an 65% reduction in heat. D-Mat has exceptional acoustic absorption, meets flammability rating and is mildew and bacteria resistant.

- Comfortable interior at any temperature
- Quick & easy installation
- Economical insulating solution
- Light weight for high performance applications



Use on headliners, door skins, fire-walls, speaker decks & more

**NEW**



### D-MAT INSULATION

Part #	Product Description
050410	D-Mat 60" x 40"
050411	D-Mat 60" x 70"
050412	D-Mat 60" wide by the linear foot



### Noise Barrier & Insulation Under Carpet

Under Carpet™ (UC) is a second layer sound deadening and insulation mat. The heavy duty, mass loaded barrier layer provides the density needed to block most exterior noise providing a quiet, theatre-like environment. While the marine grade acoustic foam decoupling layer adds to both the acoustic and thermal insulating properties. When used in conjunction with Boom Mat Damping Material, you create the perfect combination of noise and vibration control maximizing interior comfort.

- Maximum noise control
- A quiet & comfortable interior
- No mold or mildew issues
- Perfect combination of noise & vibration control



#### UNDER CARPET

Part #	Description
050100	24" X 54" (9 sq. ft.)
050101	48" X 54" (18 sq. ft.)
050102	BULK Linear ft. X 54" W



Use as a second layer over Boom Mat to barrier out road and engine noise



We use Boom Mat in every project that rolls out of Strange Motion. Many different types of insulation and heat wraps for any application we come across.

Tim Strange  
Strange Motion



### Noise Barrier & Insulation Leather Look

Leather Look provides all the benefits of Under Carpet Sound Barrier with the addition of a finished leather look. Ideal as a second layer for exposed areas. Perfect uses include covering speaker boxes, package trays, trunks, door panels and headliners. With its durable wear-rated surface, don't be afraid to use on the floor boards in lieu of carpeting.

- Stylish finished appearance
- Maximum noise control
- A quiet & comfortable interior
- No mold or mildew issues



#### LEATHER LOOK SOUND BARRIER

Part #	Description
050120	24" X 48" (8 sq. ft.)
050121	48" X 48" (16 sq. ft.)
050122	BULK linear ft. X 48" W



Use as a second layer over Boom Mat for the quietest ride possible with a finished leather look.



Leather Look gives trunks a custom finished appearance while keeping out annoying road noise!!



# BOOM MAT HEAT REFLECTIVE BARRIERS

## Heat Barrier Floor & Tunnel Shield II™

EXTREME HEAT BARRIER! 10 mil dimpled aluminum face with a glass fiber backing. It is self extinguishing and only a .3% moisture absorption. Withstands up to 1750°F of continuous radiant heat with an aggressive self-adhesive backing. Easy to use - simply trim, peel and stick. Use on fire walls, trans tunnels, floor boards, fuel cells and anywhere protection from heat is needed.

- 10 mil dimpled aluminum face
- Protection for engine components
- Protection for painted body panels
- Comfortable interior at any temperature
- Hi-temp adhesive for a "do-it-once" install



### FLOOR & TUNNEL SHIELD II

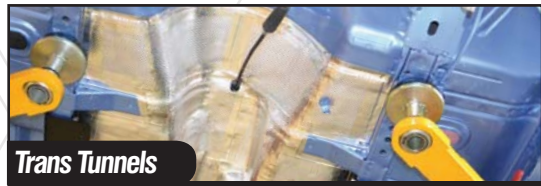
Part #	Description
050507	21" X 24" (3.5 sq. ft.)
050508	21" X 48" (7 sq. ft.)
050509	42" X 48" (14 sq. ft.)



**ONLY 3/16" THICK!**

**UP TO 1750°F  
EXTREME HEAT  
BARRIER!**

Use as barrier to reflect and insulate from any heat source



Trans Tunnels



Fire Walls



Above Exhausts

## Noise Barrier / Moisture Barrier Heat Moldable

**PERFECT FOR REPLACING KRAFT PAPER OR PLASTIC DOOR MOISTURE BARRIERS!**

Moldable™ Barrier is a highly flexible, .5lb/ft2 sound barrier designed for those applications where a budget conscious, simple noise control solution is needed. Easily installs with scissors and a heat gun and bonds to itself where seaming is necessary. It's waterproof properties along with its thin profile, make it perfect for a sound and moisture barrier behind door panels.

- Easy installation
- Cost effective sound & moisture barrier
- Custom molded fit with heat application
- Easy removal for repairs or service

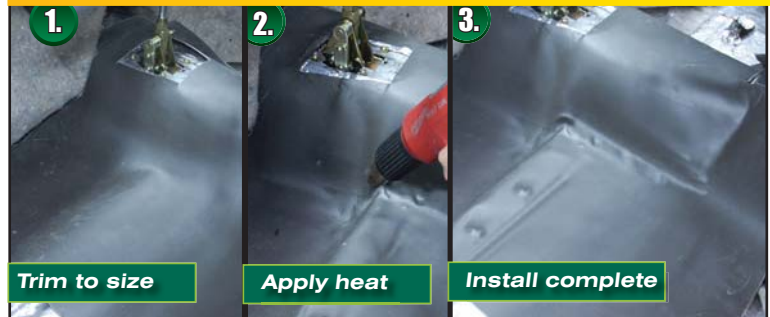


### HEAT MOLDABLE BARRIER

Part #	Description
050103	24" X 54" (9 sq. ft.)
050104	48" X 54" (18 sq. ft.)
050105	BULK linear ft. X 54" W

Use by itself or as an economical sound barrier on top of Boom Mat damping material.

Heat Moldable Barrier Installation as easy as 1... 2... 3...



**ONLY 1/16" THICK!**

## Black Under Hood™ Thermal Acoustic Lining

Designed primarily for the engine compartment as a way to greatly reduce heat and noise with an easy peel and stick product anyone can install. Engine heat and noise often is a problem with today's modified vehicles packed with high performance components. The use of Under Hood™ Thermal Acoustic Lining can help solve this issue.

- Black textured finish
- Cooler hood surfaces protects your paint
- Reduced engine noise for quieter passenger compartment
- Easy peel & stick installation
- Measures 32" x 59"

### BLACK UNDER HOOD

Part #	Description
050129	32" X 59" (13.1 sq ft)



# BOOM MAT INTERIOR KITS



## Boom Mat All-In-One Interior Kits

Take the guess work out of thermal and acoustic control... All in one part number! A simple and cost-effective, universal-fit, sound deadening & thermal insulation kit.

**STEP 1:** Apply Boom Mat vibration damping material to remove structure borne vibrations, squeaks & rattles.

**STEP 2:** Apply Boom Mat Spray-On to reduce the noise and vibration in hard to reach areas such as trunk interiors, fender wells & inside doors

**STEP 3:** Apply Under Carpet Lite over damping material on firewalls and floor boards to block up to 85% of heat and for additional noise control.



### SMALL TO MEDIUM VEHICLES

Part #	Description
050500	Boom Mat Interior Kit (Small to Medium Vehicles)

#### Kit Includes:

- Boom Mat Damping Material (25 sq.ft.)
- 6ft. x 70" Roll of Under Carpet Lite (35 sq.ft.)
- Boom Mat Spray-On (18oz. can)

### FULL SIZE VEHICLES

Part #	Description
050499	Boom Mat Interior Kit (Full Size Vehicles)

#### Kit Includes:

- Boom Mat Damping Material (41.7 sq.ft.)
- 10ft. x 70" Roll of Under Carpet Lite (58.3 sq.ft.)
- Boom Mat Spray-On (18oz. can)



## Camaro/Firebird 1967-1969 Precut Interior Kits



Design Engineering is leading the way with the most advance Thermal Acoustic control kits for your first Generation Camaro and Firebird F-body cars. Using a combination of our New D-Mat and our proven Under Carpet lite we offer a lite weight and affordable solution to combat heat and noise for your F-Body. By using the correct material for the space and application we are able to control the comfort level for you interior. Each kit includes our Boom mat damping material where needed and our high temp spray adhesive. This is not a one material cures all kit. We are giving you an engineered solution in a precut easy to install package.

### Damping Material

- Eliminate unwanted engine & road noise
- Dampen vibrations

### Under Carpet Lite

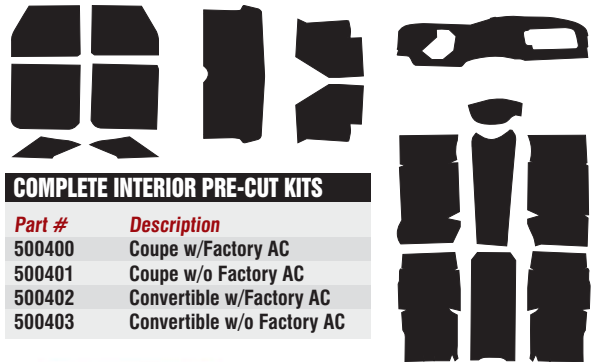
- For floors
- Light weight
- Superior heat & noise barrier

### D-Mat Layer

- For firewalls & headliners & other areas
- Ultra light weight
- Superior heat barrier

### INDIVIDUAL PRE-CUT KITS

Part #	Description
500404	Trunk Kit
500405	Package Tray Kit
500406	Trunk Divider Kit
500407	Floor Kit
500408	Roof Kit Coupe
500409	Kick Panel Kit
500410	Side Panel Kit
500411	Firewall Kit w/Factory AC
500412	Firewall Kit w/o Factory AC



### COMPLETE INTERIOR PRE-CUT KITS

Part #	Description
500400	Coupe w/Factory AC
500401	Coupe w/o Factory AC
500402	Convertible w/Factory AC
500403	Convertible w/o Factory AC

## Sprinter™ Van Insulation Kit



If you own a Sprinter Van you know how cold, loud and tinny sounding they can be. Increase comfort with DEI Boom Mat sound damping and insulation kit. Universal kits include enough insulation material to do either a short wheel base or long wheel base Van. Kits also include Boom mat damping material and spray adhesive to complete the installation along with instructions.

- Comfortable interior at any temperature
- Quick & easy installation
- Economical insulating solution
- D-MAT thermal acoustic insulation
- Universal kit

### SHORT WHEEL BASE KIT

Part #	Description
050400	Short Wheel Base Kit

Includes 250 sq ft of DEI insulation, enough Boom Mat and Spray adhesive to complete the job.

### LONG WHEEL BASE KIT

Part #	Description
050401	Long Wheel Base Kit

Includes 350 sq ft of DEI insulation, enough Boom Mat and Spray adhesive to complete the job.



## Speaker Baffles

- Maximize speaker performance by isolating the correct frequency responses
- Dampen vibration in sheet metal & panel-to-frame resonance
- Water tight protective shell to prevent moisture intrusion
- Closed cell polyethylene construction
- All sold in pairs

### ROUND SPEAKER BAFFLES

Part #	Description	Width	Height	Depth
050310	4" Round	6"	6"	3-1/2"
050311	4" Round Slim	6"	6"	2-1/2"
050320	5-1/4" Round	6-1/2"	6-1/2"	4"
050321	5-1/4" Round Slim	6-1/2"	6-1/2"	2-1/2"
050330	6-1/2" Round	7"	7"	3-1/2"
050331	6-1/2" Round Slim	7"	7"	3"
050340	6-3/4" Round	7-1/2"	7-1/2"	5"
050341	6-3/4" Round Slim	7-1/2"	7-1/2"	3"

### OVAL SPEAKER BAFFLES

Part #	Description	Width	Height	Depth
050350	4" x 6" Oval	8"	6"	3-1/2"
050351	4" x 6" Oval Slim	8"	6"	2-1/2"
050360	5" x 7" Oval	8-1/2"	7"	4-1/2"
050361	5" x 7" Oval Slim	8-1/2"	7"	3"
050370	6" x 8" Oval	9-1/2"	7"	5"
050371	6" x 8" Oval slim	9-1/2"	7"	3"
050380	6" x 9" Oval	10-1/2"	7-3/4"	4-1/2"
050381	6" x 9" Oval Slim	10-1/2"	7-3/4"	3-1/2"



## Speaker Baffle Retail Display

Everything needed to grow profits in a easy to use and easy to set up POP display. The perfect value added product to increase sales.

### SPEAKER BAFFLE RETAIL DISPLAY

Part #	Description
500300	Speaker Baffle Retail Display

Kit Contents includes 10" x 18" retail display sign, "Stock Out" cards, 24" x 48" Boom Mat banner and 2 pair of each:

050310	4" Round
050311	4" Round Slim
050320	5-1/4" Round
050321	5-1/4" Round Slim
050330	6-1/2" Round
050331	6-1/2" Round Slim
050340	6-3/4" Round
050341	6-3/4" Round Slim
050350	4" x 6" Oval
050351	4" x 6" Oval Slim
050360	5" x 7" Oval
050361	5" x 7" Oval Slim
050370	6" x 8" Oval
050371	6" x 8" Oval Slim
050380	6" x 9" Oval
050381	6" x 9" Oval Slim

### OPTIONAL SLAT WALL HOOK KIT

Part #	Description
500900	4 - 8" Hooks 12 - 6" Hooks

**OPTIONAL: Slat Wall Hook Kit**  
Easily display speaker baffles on existing retail slat walls.  
(Baffles not included)



### OPTIONAL GRID PANEL DISPLAY

Part #	Description
500910	4 - 8" Hooks 12 - 6" Hooks 24" x 60" Grid Panel Pair of Free Standing Legs 4 - Wall Mount Hooks 4 - Sign clips

**OPTIONAL: Grid Panel Display**  
Display speaker baffles on black metal free standing or wall mount grid panel.  
(Baffles not included)



**Perfect value added product Retail Display**

## Sound Deadening / Insulation Jeep Wrangler Sound Deadening / Insulating Headliner

Riding in a Jeep is great fun except for the truck's propensity for interior noise that makes it difficult to hear conversations or enjoy your sound system. Now there is an easy solution. Boom Mat's new Jeep Wrangler Sound Deadening Headliner (available in two finishes) is a custom cut, peel and stick kit that dresses up the interior of Jeep hard tops while minimizing annoying outside noise. Constructed of high quality marine grade acoustical foam that resists mold and mildew while insulating from outside heat/cold and sound with an R4 value.

- Headliner reduces noise levels 3 to 4 decibels.
- A significant change in noise level that will make it easier to have conversations & enjoy your favorite music.



### Original Finish

#### 2 DOOR KITS - JK MODELS

Part #	Description
050132	'07-'10 2-DOOR, BLACK
050136	'07-'10 2-DOOR, WHITE
050134	'07-'10 2-DOOR, GRAY
050138	'11-UP 2-DOOR, BLACK
050142	'11-UP 2-DOOR, WHITE
050140	'11-UP 2-DOOR, GRAY

#### 4 DOOR KITS - JK MODELS

Part #	Description
050131	'07-'10 4-DOOR, BLACK
050135	'07-'10 4-DOOR, WHITE
050133	'07-'10 4-DOOR, GRAY
050137	'11-UP 4-DOOR, BLACK
050141	'11-UP 4-DOOR, WHITE
050139	'11-UP 4-DOOR, GRAY

#### '97 - '06 - TJ MODELS

Part #	Description
050143	'97-'06 TJ BLACK '97-'02 w/factory sound bar and '97-'06 with no roll bar speakers
050144	'97-'06 TJ GRAY '97-'02 w/factory sound bar and '97-'06 with no roll bar speakers
050145	'97-'06 TJ WHITE '97-'02 w/factory sound bar and '97-'06 with no roll bar speakers
050146	'03-'06 TJ BLACK w/factory speaker pods
050147	'03-'06 TJ GRAY w/factory speaker pods
050148	'03-'06 TJ WHITE w/factory speaker pods

**Reduces noise levels 3 - 4 decibels!**

**Reduces radiant heat from roof**

**Improves acoustics inside**

**Leather Look finish is easy to clean and durable for extreme offroading!**



### Leather Look

#### 2 DOOR KITS - JK MODELS

Part #	Description
050156	'07-'10 2-DOOR, BLACK
050158	'07-'10 2-DOOR, GRAY
050160	'11 - UP 2-DOOR, BLACK
050162	'11 - UP 2-DOOR, GRAY

#### 4 DOOR KITS - JK MODELS

Part #	Description
050155	'07-'10 4-DOOR, BLACK
050157	'07-'10 4-DOOR, GRAY
050159	'11 - UP 4-DOOR, BLACK
050161	'11 - UP 4-DOOR, GRAY



Optional 2-piece side window kit shown (See Page 46 for Side Window Kit Information)



# JEEP® WRANGLER SIDE WINDOW KITS

## Sound Deadening / Insulation Jeep Wrangler Side Window Kits

Complete headliner installations with our Jeep Wrangler Side Window Trim kit. A great finishing touch for the interior of any Wrangler!



- The finishing touch that compliments your Jeep Sound-Deadening Headliner Kit
- Adds additional sound deadening & thermal insulation
- Original finish available in black, gray or white
- Leather Look available in black or gray



### ORIGINAL FINISH - JK MODELS

Part #	Description
050149	'11-UP 4-DOOR, BLACK
050150	'11-UP 4-DOOR, GRAY
050151	'11-UP 4-DOOR, WHITE
050152	'11-UP 2-DOOR, BLACK
050153	'11-UP 2-DOOR, GRAY
050154	'11-UP 2-DOOR, WHITE



### LEATHER LOOK - JK MODELS

Part #	Description
050163	'11-UP 4-DOOR, BLACK
050164	'11-UP 4-DOOR, GRAY
050165	'11-UP 2-DOOR, BLACK
050166	'11-UP 2-DOOR, GRAY

## Sound Deadening / Insulation Universal Headliner Material

Boom Mat's Jeep Wrangler Sound Deadening Headliner is now available in a 75" x 54" sheet. (Black only) This peel and stick material can be used to dress up any interior while minimizing annoying outside noise. Constructed of high quality marine grade acoustical foam that resists mold and mildew while insulating from outside heat/cold and sound with an R4 value.



- Adds additional sound deadening & thermal insulation
- Use to finish any interior panel
- Easy peel & stick
- 1" thick

### UNIVERSAL HEADLINER

Part #	Description
050528	Headliner Material

## Hi-Temp Spray Adhesive

Hi-Temp Spray Adhesive provides high strength adhesion and bonds a wide variety of materials, including trims, foams, fabrics and more.



NOTE: Ideal for adhering DEI Heat Screen, Under Carpet Lite, Under Carpet, Leather Look and other DEI and Boom Mat products.



### HI-TEMP SPRAY ADHESIVE

Part #	Description
050490	10 oz can (12 per master carton)

## Installation Tools

Boom Mat has a handle on what DIYers and professional installers need to quickly and expertly trim and install Boom Mat materials.



### INSTALLATION TOOLS

Part #	Description
050216	Blade Lock Knife
050218	Installation Roller



### Boom Mat Retail Starter Kit

Raise profits with thermal acoustic control products from Boom Mat. An easy sell and great add-on when installing stereo components to raise profits.

Complete starter kit to help take the first step into the thermal and acoustic control market. Includes the necessary products to get the job done right and to help you close the sale.

- Retail display board for customer education
- Banner to hang for brand recognition
- 6" x 6" samples for your customers to touch & feel the quality
- Marketing materials to cover the basics of controlling heat & sound
- Decals to place throughout retail space area

#### BOOM MAT RETAIL STARTER KIT

Part #	Product Description
500100	Boom Mat Retail Starter Kit

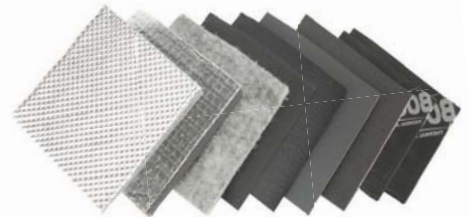
Kit Includes:		
Qty.	Part #	Description
1	050202	12" x 12-1/2" (4 sheets)
2	050220	18oz Boom Mat Spray-On
1	050110	24" x 54" Under Carpet Lite
1	050130	32" x 54" Under Hood
2	050331	6-1/2" Slim Round Speaker Baffle
2	050381	6" x 9" Oval Slim Speaker Baffle
1	060603	Boom Mat Retail Display Board
1	060504	48" x 24" Boom Mat Banner
6	060526	Boom Mat Decal
2	500220	6" x 6" Sample Packs



### Sample Pack

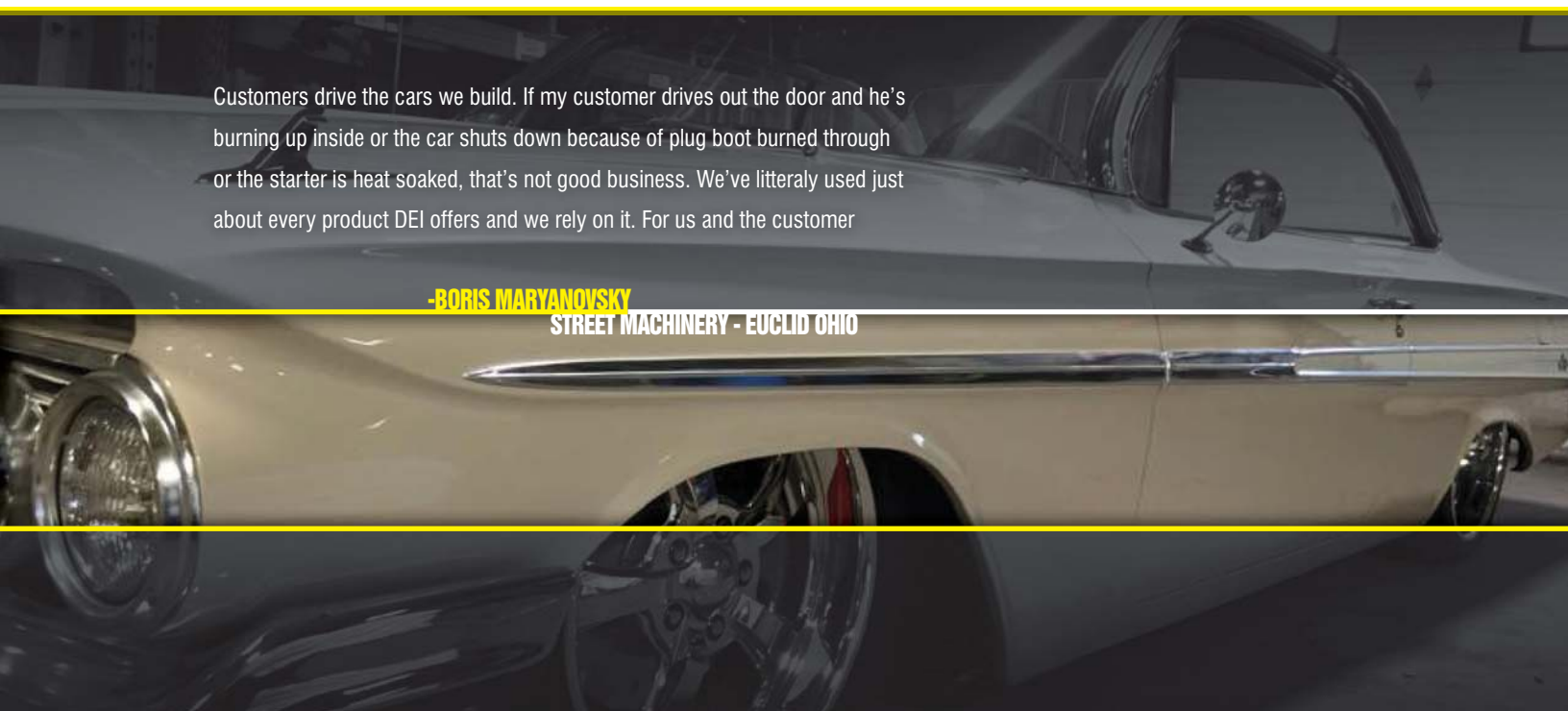
- 6" x 6" samples of:
- Floor & Tunnel Shield II
  - Under Hood
  - Under Carpet Lite
  - Black Under Hood
  - Heat Moldable
  - Leather Look
  - Under Carpet
  - 2mm Damping Material
  - 4mm Boom Mat XL Damping Material
  - Form-A-Shield

SAMPLE PACK	
Part #	Description
500220	6" X 6" SAMPLE PACK



Customers drive the cars we build. If my customer drives out the door and he's burning up inside or the car shuts down because of plug boot burned through or the starter is heat soaked, that's not good business. We've literally used just about every product DEI offers and we rely on it. For us and the customer

**-BORIS MARYANOVSKY**  
STREET MACHINERY - EUCLID OHIO



### EXO Series™ Exhaust Wrap

EXO Series exhaust wrap is designed for extreme environment use. It is a dual-layer design, using a combination of hi-temp glass fiber, covered with a 304 grade stainless steel exoskeleton. This unique construction maintains high heat protection while offering superior abrasion and impact protection. Our unique Air Gap Technology keeps direct contact of the glass fiber wrap off the hot surface creating an insulating air barrier.

- Glass fiber wrap with 304 stainless exoskeleton
- Superior abrasion & impact protection
- Creates insulating air barrier
- Available in tan and black, in 1.5" width in 10', 20' and 30' rolls

#### EXO EXHAUST WRAP

Part #	Description
010075	1.5 x 10' Tan
010076	1.5 x 20' Tan
010059	1.5 x 30' Tan <b>NEW</b>
010077	1.5 x 10' Black
010078	1.5 x 20' Black
010058	1.5 x 30' Black <b>NEW</b>



### Complete Exhaust Wrap Kits

The perfect kit for most V-Twin applications! Each kit includes two 2" x 15' rolls of exhaust wrap, eight 8" & four 14" stainless steel Locking Ties to secure wrap and HT Silicone Coating spray that penetrates, seals, protects and preserves wrap.

#### EXHAUST WRAP KITS

Part #	Description
010330	Black Wrap w/Black HT Silicone Coating
010331	Tan Wrap w/Aluminum HT Silicone Coating
010332	Tan Wrap w/White HT Silicone Coating



### Wide Band Clamps

Our Wide Band series of clamps are the perfect choice if you are looking to enhance the look of DEI exhaust wrap on your vehicle or motorcycle. These clamps are extra wide to cover the end of the wrap and give a clean transition from wrap to pipe.



#### WIDE BAND CLAMPS

Part #	Description
010214	2-3/8" (2.25" - 2.56" range)
010215	2" (1.88" - 2.19" range)

- Can be polished to a show finish
- Great as an exhaust clamp
- Provides a clean transition from wrap to pipe.



#### GREAT FOR:

Covering the end of the wrap and give a clean transition from wrap to pipe.

Can be polished for a show finish

### Under Tank Heat Reflection Kit

- Race fuel manufacturers recommend using reflective materials to help keep fuels stable.
- Helps prevent vapor lock on hot days
- Line the underside of your fuel tank with self-adhesive Reflect-A-Cool™ (normal use) or Reflect-A-GOLD™ (extreme use) material and trim to shape.
- Each kit includes a 24" x 24" sheet of material along with a 1 1/2" X 15ft roll of heat reflective tape to cover seems & irregular shapes.

#### UNDER TANK HEAT REFLECTION KIT

Part #	Description
010463	Reflect-A-Cool Kit
010464	Reflect-A-GOLD Kit



### Fuel Tank Cover

- Race fuel manufacturers recommend keeping fuel cool
- Maintain stable fuel temperatures between sessions
- Made from a 2mm felt backed Mylar material and is capable of reflecting up to 90% of the sun's heat
- Fast on & off, perfect for the paddock
- Reflects heat from the sun
- Helps prevent vapor lock

#### FUEL TANK COVER

Part #	Description
010465	Fuel Tank Cover





### Bodywork Protection Kit

DEI has come up with the perfect kit to help protect against excess heat on any powersports vehicle. It includes a combination of DEI's lightweight, reflective materials perfectly sized for powersports applications. Great for use on fairings, air boxes, seat pans, rear fenders. All materials have a self-adhesive backing and can be trimmed easily to shape and are designed to form-fit to irregular shapes.

Each kit includes: one 12" x 24" Reflect-A-Cool sheet, one 1 1/2" x 15ft roll of Cool Tape™, and two 10" x 10" sheets of Extreme Heat Barrier.



- Great for:
- Roadracing bodywork
  - Replacing old OEM shielding
  - Additional heat protection

BODYWORK PROTECTION KIT	
Part #	Description
010329	Bodywork Protection Kit

### Motorcycle Leg Shield

Born from necessity and the desire to not burn our legs. DEI has developed a simple but highly effective solution to reduce the amount of heat you feel on your leg when riding your Motorcycle.

Crafted from a Leather outer shell, high performance insulation and a durable inside layer, it simply goes around your leg and fastens with simple hook & loop straps. Easy to put on and remove you can use it only when needed and store it under your seat or saddle bag when not in use.

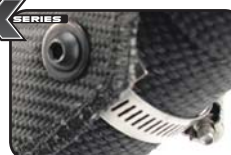
- Prevents leg burns
- Easy on - easy off
- Leather outer shell with insulated inner layer
- Measures 8" x 10"

MOTORCYCLE LEG SHIELD	
Part #	Description
902440	Motorcycle Leg Shield



### ONYX Series™ Flexible Heat Shield

A heat shield solution that looks great and outperforms other conventional heat shields available today. The outer layer is a heat-treated glass fiber, bonded with molten aluminum and formed into a tight weave for durability and strength. The inside material is made of a specially treated, high temperature resistant fabric (89% silica) designed to withstand serious exhaust heat. The outer edge is finished off with a surge stitch for durability. All hardware is stainless steel. Can handle heat up to 1350°F, with an eye catching black finish.



Stainless steel hardware



Standoffs create air gap for maximum heat dissipation

- More effective than traditional metal heat shields
- Enhanced protection for legs and boots
- Great custom look

ONYX FLEXIBLE HEAT SHIELD	
Part #	Description
010496	4" x 8" Length



### Flexible Heat Shield

The upgraded construction builds on the strengths of existing DEI Shields, but adds more rigidity with a cleaner look. Being flexible, these shields can be adjusted to fit a range of diameters. They work great as OEM replacements, over exhaust wrap, or even doubling up existing metal heat shields for the ultimate protection.

Each shield uses our reliable stainless standoff bracket and includes mounting hardware for easy installation. There are a few color combinations to choose from: TITANIUM Series™ (bronze with brushed trim) ONYX Series™ (black with brushed trim), and ONYX Double Black.

- Blocks heat more effectively than stamped metal shields
- Great Protection for shorter riders
- Semi-flexible material for easy fitment on almost any exhaust
- Stainless Steel mounting hardware included
- Dual layer high-temperature textile materials



FLEXIBLE HEAT SHIELDS	
Part #	Description
010900	ONYX Series Black 3.5" x 6.5"
010901	TITANIUM Series 3.5" x 6.5"
010902	ONYX Series Black 4" x 8"
010903	TITANIUM Series 4" x 8"
010926	ONYX Series Double Black 3.5" x 6.5"
010927	ONYX Series Double Black 4" x 8"

### Polaris® Slingshot™ Heat Control Kit

With its compact design and 4 cylinder engine, the muffler, catalytic converter, and exhaust manifold all reside in close proximity to one another on the right side of the vehicle. This concentration of heat easily transfers into the passenger area, cooking the floor and cockpit area.

DEI Powersports has developed a custom cut, 11 piece heat control kit that blocks the heat transfer into the cockpit, resulting in a cooler and quieter Slingshot.



- Comprehensive 11 piece kit
- Pre-cut pieces for easier installation
- Passenger shield is double walled for maximum insulation

POLARIS SLINGSHOT HEAT SHIELD KIT	
Part #	Description
010089	2015-2016 Slingshot Heat Control Kit

### Honda® Pioneer™ 1000-5 & 1000-3 Heat Shield Kit

Tired of feeling the burn from your Honda® Pioneer? DEI Powersports now offers a heat shield kit that reduces the seat temperatures as well as blocking the heat radiating up through the seat belt holes. Also included, are two additional shields that protect the rear passenger foot well area. Installation is straight forward and these durable shields can be removed when its time for service. This kit will increase the riding comfort for you and your whole crew.

- Blocks excessive heat from the engine bay
- Lowers temperatures on the seat and middle plastic panel
- Includes foot well protection for the rear passenger
- Easily removable for service
- Fits: 2015-16 Honda Pioneer 1000-5 & 1000-3 model

HONDA PIONEER HEAT SHIELD KIT	
Part #	Description
010874	Front Seat & Rear Footwell Heat Shield Kit



**NEW**

### Honda® Pioneer™ 1000-5/1000-3 Auxilliary Fan Kit

DEI now offers an auxiliary fan system to help evacuate the hot air that gets trapped in the engine compartment on the Honda® Pioneer. A programmable thermostat reads real time temperature and allows you to set the fan activation temperature. The compact 3" marine grade fan quickly draws down the excessive heat generated by the engine and exhaust system. No cutting or splicing is need for installation.

- Evacuates trapped hot air
- Programable thermostat
- Marine grade fan assembly
- No cutting or splicing required

HONDA PIONEER FAN KIT	
Part #	Description
010875	Auxilliary Fan Kit - 2015-up



**NEW**

### Can-Am® Commander™ Heat Shield Kit

- All 2 seat models 2011-2017
- Blocks heat build up in the cockpit area
- Reduces engine noise & vibration
- Adhesive backed & precision cut
- No modifications are needed for installation

CAN-AM COMMANDER HEAT SHIELD KIT	
Part #	Description
010878	Heat Shield Kit

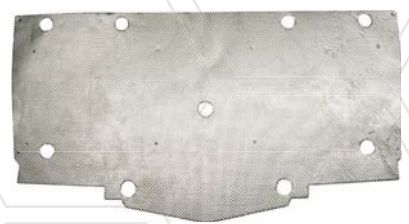


**NEW**

### Polaris® RZR™ Heat Shield

- RZR 800, 800s 2008 - 2014
- High performance
- Precision cut for easy fit

POLARIS RZR HEAT SHIELDS	
Part #	Description
010879	Cargo Heat Shield
010880	Engine Heat Shield



**NEW**

### Vinyl Banners

Measuring a full 48" x 24", these heavy mil vinyl banners have double-stitched edges for added durability and brass eyelets in each corner.



VINYL BANNERS	
Part #	Description
060501	4 Color DEI Banner
060504	Boom Mat Banner

### Sunglasses

#### FLAME SUNGLASSES

Part #	Description
070202	Black w/Red Flames



### Decals

#### DECALS

Part #	Description
060521	DEI Decal 3.4" x 10"
060522	Cryo2 Decal 9" x 3"
060526	Boom Mat Decal 7" x 3"
060527	DEI Decal 5.5" x 1.5" 100 pack



DEI HAT		
Part #	Size	Fits
070300	CRYO2 Black Hat	One size fits all
070303	DEI Black Hat	One size fits all

### Retail Product Display Boards

Measuring 12" x 18", this product display board gives your customer all the information they need at the point of purchase, to make an informed decision and make the buying process easy.

RETAIL PRODUCT DISPLAY BOARD	
Part #	Description
060600	Exhaust & Accessories
060601	Heat & Sound Barrier
060602	Line & Hose Protection
060603	Boom Mat Thermal Acoustic
060604	Jeep Headliner
010902	GOLD Materials



### T-Shirts

Boom Mat "Thermal Acoustic Control" design T-shirts. This high quality T-shirt is made of 100% cotton and is pre-shrunk.

#### BOOM MAT T-SHIRT

Part #	Description
070131	Medium
070132	Large
070133	X-Large
070134	XX-Large
070135	3X-Large



#### DEI COOL T-SHIRT

Part #	Description
070170	Medium
070171	Large
070172	X-Large
070173	XX-Large
070174	3X-Large
010175	4X-Large

