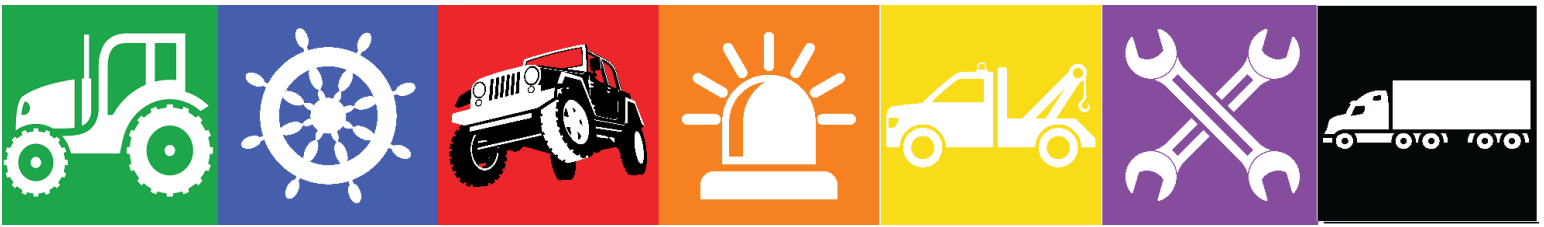


Full Line Catalog

LITE-IT

CUSTER
PRODUCTS
L I M I T E D





**Agricultural
Lights**

**Marine
Lights**

**Off-Road
Lights**

**Safety
Lights**

**Towing
Lights**

**Work
Lights**

**Trailer
Lights**



Custer Products believes in the relentless pursuit of excellence in everything we do. We take pride in our commitment to quality products and service. We are the Leader in Lights™ for a reason.

Custer Products manufactures and distributes LED lights, towing lights and related lighting products to the trucking, towing, agricultural, off-road and safety industries through a network of distributors in the United States, Canada, Central and South America and Europe. We sell under the Custer, Lite-It and Lite-It Wireless brand names. Founded in 1993, we operate out of an 80,000 square foot facility in North Canton, Ohio.

Contents

LED Marker & Auxiliary Lights.....4-7

Mounting Boxes.....8

Color Safety Flashers.....9

Rooftop Strobe Light Bars.....10-11

Trailer Lights and Kits.....12

Agricultural Lights.....13

Commercial Tow Lights.....14-15

LED Work Light Bars.....16

LED Work Lights.....17-18

Halogen Lamps & Spot Lights.....19

Strobe Beacons.....20-21

LED Strobes.....22-23

Cabled LED Tow Lights.....24

Cabled Incandescent Tow Lights.....25

Wireless LED Tow Lights.....26-27

Accessories.....28

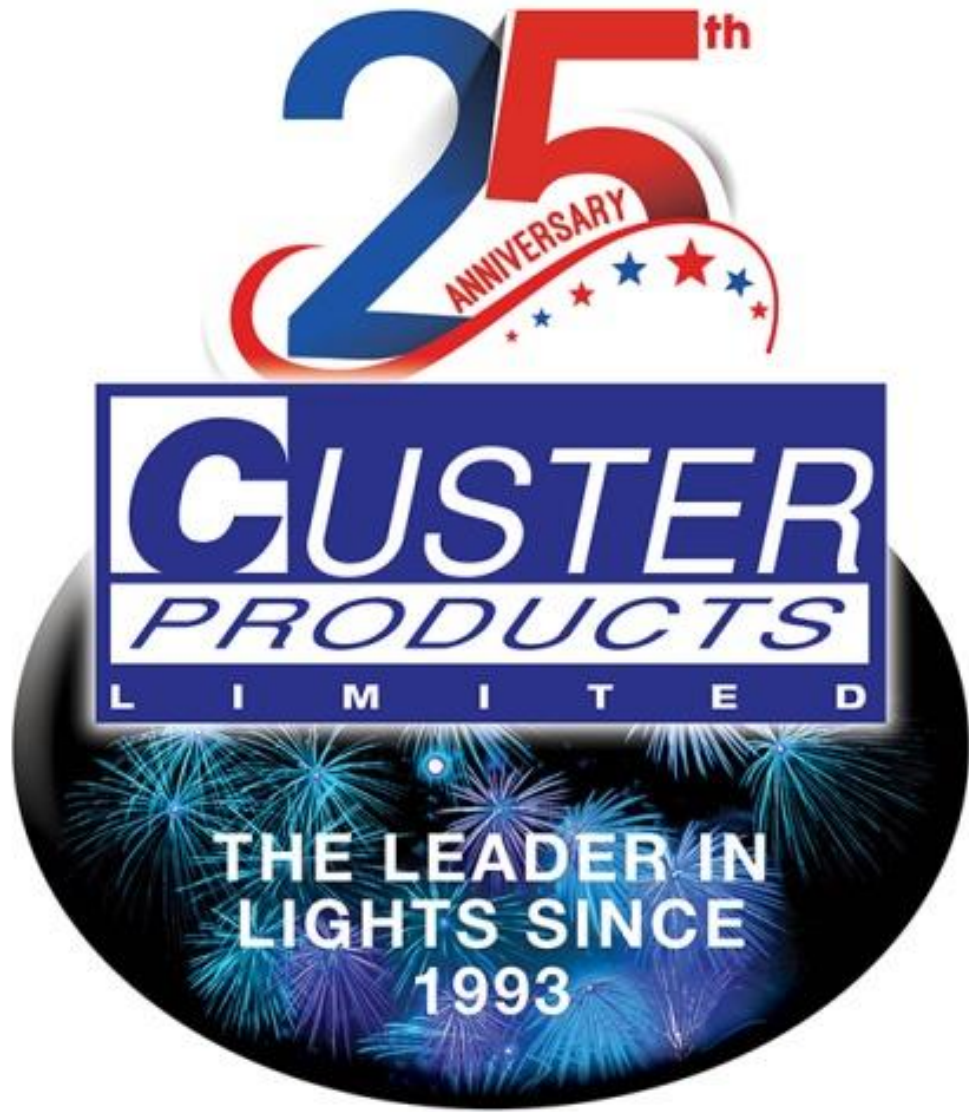
Sockets, Plugs and Adapters.....29

Specialty Products.....30

SMV, Conspicuity and Reflective Tape.....31

Incandescent Lights.....32

Glossary.....33



LED MARKER & AUXILIARY LIGHTS



4" x 7.5" LED Narrow Marker Lamp

- CPL95A** Amber Light, 7 LED
CPL95R Red Light, 7 LED
- Built in 2-wire pigtail
 - 3" hole mount centers



4" x 1.5" LED Marker Lights

- CPL126A** Amber Light, 3 LED
CPL127R Red Light, 3 LED
- Built in 2 wire pigtail
 - Reflex lens



4" x 2" Sealed LED Marker Lights

- CPL120A** Amber Light, 16 LED
CPL120R Red Light, 16 LED
- Built in 2 wire pigtail
 - 3" hole mount centers



2" Sealed LED Marker Lights

- CPL2A** Amber light, 10 LED
CPL2R Red light, 10 LED
- Uses G2G rubber grommet
 - Standard GP1 2-wire plug



2.5" Round Sealed LED Marker Lights

- CPL25A** Amber Light, 13 LED
CPL25R Red Light, 13 LED
CPL25AR Amber Light, 8 LED with reflex
CPL25RR Red Light, 8 LED with reflex
GP1 2-wire plug
G25G 2.5" rubber grommet
G25G-O Open-back grommet
G25G-CB Closed-back grommet



2.5" x 1.25" Sealed LED Marker Lights

- CPL26A** Amber, 3 LED
CPL26R Red, 2 LED
G26G Rubber grommet
G26B-C Chrome (wired) mounting bracket



3.75" x 1.25" Sealed LED Lights

- CPL375A** Amber light, 4 LED
CPL375R Red light, 4 LED
CPL375RA Red/Amber, 6 LED
G3B-C Wired chrome mount
G3B-B Wired black mount



LED 4" x 2" Oblong Clearance/Side Marker Lights with Reflex

- CPL42A** Amber light, 4 LED
CPL42R Red light, 4 LED
- Built in 2 wire pigtail



LED 2-7/8" x 2-1/8" Stud Mount Side Marker Light with Reflex

- CPL275A** Amber light, 6 LED, 2 wire
CPL275R Red light, 6 LED, 2 wire



3/4" LED Lights

- CPL1A** Amber Light
- CPL1R** Red Light
- CPL1W** White light
- CPL1-BEZEL** Chrome bezel
- 3/4" Diameter



3/4" LED Lights

- CPL1A-CL** Amber Light with clear lens
- CPL1R-CL** Red Light with clear lens
- CPL1W** White light with clear lens
- CPL1-BEZEL** Chrome bezel
- 3/4" Diameter



5.5" Sealed Rectangular LED Lights

- CPL55A** Amber turn signal light, 15 LED
- CPL55R** Red stop/tail/turn light, 15 LED
- GP2** 3-wire plug
- G55G** 5.5" rubber grommet



4" Sealed Round LED Lights

- CPL4A10** Amber light, 10 LED
- CPL4R10** Red light, 10 LED, Stop/Tail/Turn
- CPL4CL10** Clear light, 10 LED
- GP2** 3-wire plug
- G4G** 4" rubber grommet



4" Sealed Round LED Lights

- CPL4A** Amber light, 18 LED
- CPL4R** Red stop/tail/turn light, 18 LED
- GP2** 3-wire plug
- G4G** 4" rubber grommet



4" Sealed LED Lights with Mirror Finish

- CPL4AM** Amber turn signal light, 24 LED
- CPL4RM** Red stop/tail/turn light, 24 LED
- GP2** 3-wire plug
- G4G** 4" rubber grommet



6.5" Sealed Oval LED Lights

- CPL65A10** Amber light, 10 LED
- CPL65R10** Red light, 10 LED, Stop/Tail/Turn
- CPL65CL10** Clear light, 10 LED
- GP2** 3-wire plug
- G65G** 6.5" rubber grommet



6.5" Sealed Oval LED Lights

- CPL65A** Amber turn signal light, 20 LED
- CPL65R** Red stop/tail/turn light, 20 LED
- GP2** 3-wire plug
- G65G** 6.5" rubber grommet



6.5" Sealed Oval LED Lights with Mirror Finish

- CPL65AM** Amber turn signal light, 24 LED
- CPL65RM** Red stop/tail/turn light, 24 LED
- GP2** 3-wire plug
- G65G** 6.5" rubber grommet

LED MARKER & AUXILIARY LIGHTS



6.5" Sealed Oval LED Amber Sequencing Turn Signal Lights

- CPL65A-SEQ** 6.5" Amber oval light
- Dual function, either trailing arrow or sequencing single arrow
 - Uses G65G rubber grommet & GP3 plug



Clearance LED Marker/Utility Lights

- CPL27A** Amber Light, 3 LED
CPL27R Red Light, 3 LED
- High impact acrylic lens & ABS chrome plated bracket
 - 2-3/4" center to center holes for mounting
 - No plug needed – includes 2-wire pigtail



6.5" Sealed Oval White LED Back-Up Lights

- CPL65CL** 6.5" oval white, 28 LED
- GP2 3-wire plug
 - G65G 6.5" rubber grommet



4" LED Pedestal Lights

- CPL4RA-DC** 4" Red/Amber LED
CPL4AA-DC 4" Amber/Amber LED
CPL4RCL 4" Red/Clear LED
CPL4RCL-4W Red/Clear LED with 4 wires for separate functions
- LED lights with 42 diodes, (21 per side) and chrome die cast housings



LED RGB Rock Lights

RGB4K Multicolored Lights

- Comes with Four 9-Watt Lights, Controller, 10ft. wire from lights, 6.5 ft. from controller
- Lights change to any color – all controlled from free smartphone app
- 10-30V operation, polycarbonate lens
- Each light-head is 1-3/4" high x 3" wide x 1/2" deep



6.5" LED Side Turn Light

- CPL65A-SMA** LED Amber
- Side marker & turn signal light with 18 LEDs
 - Uses GP2 3-wire plug & G65G 6.5" rubber grommet



Clearance LED Marker Light with Chrome Bezel

- CPL50A** Amber
CPL50R Red
- 4 LED, Built-in 2-wire pigtail



4-5/8" Square LED Red/Amber Light

- CPL68R** Right Side
CPL68L Left Side
- 25 Red LEDs & 25 Amber LEDs
 - Double stud pedestal light



4" Round Quad Flash LED Strobe Kit

CPL4R-STR Red Strobe Kit

- Self-contained flash unit
- Includes 2 lights, grommets and plugs



6.5" Amber/Red Quad Flash LED Strobe Kits

CPL65A-STR Amber

CPL65R-STR Red

- Self-contained flash unit
- Strobe kit (includes 2 lights, grommets & plugs)



17" Identification Light Bars

CPL26R-3BAR LED

G26R-3BAR Incandescent

- Mounts on 16" centers
- 2.5" lights



LED 2" Round Sealed Flange Mount Clearance Side Marker Lights

CPL2RF Red light, 2 wire

CPL2AF Amber light, 2 wire

- Polycarbonate lens and housing
- 10 LEDs per light
- Pigtail wires (no plugs needed)



6.5" Clear Oval Utility Light

CPL65CL10FB Clear light with bezel

CPL65CL10F Clear light without bezel

- Surface mount design
- 10 LED clear light
- Built-in pigtail



4" Sealed LED Round Light with Flange Mount & Bezel

CPL4A10FB Amber light with bezel

CPL4R10FB Red light with bezel

CPL4A10F Amber light without bezel

CPL4R10F Red light without bezel

- Flush mount design
- 10 square LEDs
- Acrylic Lens
- ABS Housing
- Built-in pigtail
- Hardware



LED Tail, License, Backup Lights

CPL62 Without license light

CPL62L With license light



6.5" Sealed LED Oval Light with Flange Mount and Bezel

CPL65A10FB Amber light with bezel

CPL65R10FB Red light with bezel

CPL65A10F Amber light without bezel

CPL65R10F Red light without bezel

- Flush mount design
- 10 square LEDs
- Acrylic Lens
- ABS Housing
- Built-in pigtail
- Hardware

MOUNTING BOXES



Steel Mounting Boxes

- MT-BOX4** Steel box for ONE 4" round light (6.5" L x 6.5" H x 3" D)
- MT-BOX4-2** Steel box for TWO 4" round lights (12.5" L x 6" H x 3.5" D)
- MT-BOX4-3** Steel box for THREE 4" round lights (18.25" L x 6" H x 3.5" D)
- MT-BOX65** Steel box for ONE 6.5" oval light (8.5" L x 4" H x 3.5" D)
- MT-BOX65-2** Steel box for TWO 6.5" oval lights (16.75" L x 4.25" H x 3.5" D)
- MT-BOX65-3** Steel box for THREE 6.5" oval lights (25" L x 4.25" H x 3.5" D)



Aluminum Mounting Boxes

- AL4R** Aluminum Box for ONE 4" round light (6.5" L x 6.5" H x 3" D)
- AL4R2** Aluminum Box for TWO 4" round lights (12.5" L x 6" H x 3.5" D)
- AL4R3** Aluminum Box for THREE 4" round lights (18.5" L x 6" H x 3.5" D)
- AL650** Aluminum Box for ONE 6.5" oval light (8.5" L x 3.75" H x 3.5" D)
- AL6502** Aluminum Box for TWO 6.5" oval lights (16.75" L x 4.25" H x 3.5" D)
- AL6503** Aluminum Box for THREE 6.5" oval lights (25" L x 4.25" H x 3.5" D)



Polyethylene Mounting Boxes – Will not warp or crack



Chrome Plated Plastic Bezels

- B2** 2" round chrome plated plastic bezel
- B25** 2.5" round chrome plated plastic bezel
- B4** 4" round chrome plated plastic bezel
- B55** 5.5" rectangular chrome plated plastic bezel
- B65** 6.5" oval chrome plated plastic bezel

COLOR SAFETY FLASHERS



LED 2 Function Safety Flashers with Heavy Duty Magnets

- HF18A-PHD** Amber light, 18 LED
- HF18R-PHD** Red light, 18 LED
- HF18W-PHD** White light, 18 LED
- HF18SG-PHD** Green light, 18 LED

Comes with 2 magnets – 25 lbs. pull each

These reliable safety flashers feature 18 highly visible, super bright LEDs that can be seen up to 1 mile away. They can be attached securely to the back of a vehicle, truck, car, trailer, emergency vehicle, etc. with the built-in magnets

The 18 LED lights can be set to flashing or steady lights. Use for any emergency situation – at home or on the road. All weather resistant. Approximate size is 6” wide by 4” high. Will flash for up to 32 hours (or more) with 4 AA alkaline batteries.



Adjustable Magnetic Base

- HF18A-MB** Amber light, 18 LED
- HF18R-MB** Red light, 18 LED

- 6” wide x 4” high
- Battery-operated – takes 4 AA batteries
- Can flash or be steady on

Adjustable, strong magnetic base with 40 lbs. pull



Portable Safety Lights

- HF24A** Amber
- HF24R** Red

- 24 LED diodes
- 7” wide x 3” high
- Can flash or be steady on, dual mounting capability
- Battery operated - needs 4 AA batteries
- Dual mounting capability

Removable 70 lbs. pull magnet



LED ROOFTOP LIGHT BARS



34" long

Multi-Function 34" LED Light Bar

STR-56

- Permanent mount & hardware included
- 34" long with 56 powerful amber LEDs
- 360 degree coverage

***6 Flash patterns including traffic control pattern, center-out, right to left and left to right*

Multi-Function 23" LED Light Bar

STR-40S Suction cup mount

STR-40 Permanent mount (hardware included)

- 23" long with 40 powerful amber LEDs
- 360 degree coverage

***6 Flash patterns including traffic control pattern, center-out, right to left and left to right*



23" long

Multi-Function 51" LED Light Bar

STR51AAC

- 51" long with 18 Amber (4) diode modules
- 6 strobe flash patterns including traffic control right to left, left to right & center out
- Permanent mount hardware included
- Control box included
- 360 degree coverage



51" long

Multi-Function 56" LED Light Bar

STR56AAC

- 56" long with 18 Amber (4) diode modules
- 6 strobe flash patterns including traffic control right to left, left to right & center out
- Permanent mount hardware included
- Control box included
- 360 degree coverage



56" long

LED ROOFTOP LIGHT BARS



13" long

Magnetic Mini Strobe Bar

STR13A-MAG Amber Only (not pictured)
STR13AW-MAG Amber/White (pictured)

- 13" long x 8.5" wide x 3.25" high, 13 ft. cord
- 6 bright 10-watt LEDs, 360 degree coverage
- 10 Flash patterns controlled from cigarette lighter plug
- 2 strong magnets for mounting
- COB (Chip on Board) light source



11" long

Amber 11" LED Light Bar

STR11AP Permanent Mount
STR11A-MAG Magnetic Mount

- 11"L x 6.6"W x 1.75"H, 15' cord
- 40 Watts, 10-30V operating voltage
- 10 flash patterns
- Cigarette plug on/off switch
- IP67 waterproof rating

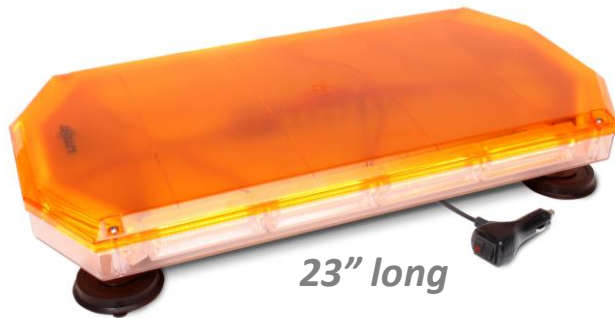
Amber/White LED Magnetic Strobe Bar

STR21AW-MAG

- 13" long x 8.5" wide x 3.25" high, 13 ft. cord
- 10 bright 10-watt LEDs, 360 degree coverage
- 10 Flash patterns controlled from cigarette lighter plug
- 4 strong magnets for mounting
- COB (Chip on Board) light source which emits a brighter light than the standard LED light



21" long



23" long

LED Amber Magnetic Strobe Bar

STR23AA-MAG

- Class I Amber LED Rooftop strobe
- 23" long and 140 watts
- New generation COB (Chip on Board) technology
- Can be used as a magnetic mount or be permanent mounted
- 16 different flash patterns all controlled from the cigarette lighter plug
- 360 degree coverage

LED Amber Strobe with Dashboard Controller

STR60A

- 60" long x 4.5" high x 8.5" deep
- 16 different flash patterns which are all displayed on the easy-to-use control pad
- Control pad is small and mounts easily in the cab
- 25 foot cord from light bar to control pad
- Polycarbonate lens
- 12-24V Operation
- Rooftop permanent mount & gutter mounts included
- Has quiet mode, which allows you to use only the front or back of the light bar depending on traffic direction
- Flash patterns include traffic control patterns (left-to-right & right-to-left)



60" long

TRAILER LIGHTS & KITS



LED Submersible Trailer Lights

- CPL001** Trailer light
- CPL002** Trailer light with license light
- 12 LEDs



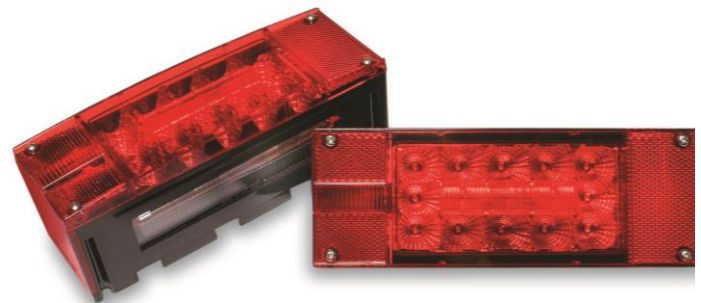
LED Trailer Lights

- CPL100** Without license light
- CPL100L** With license light
- 15 LEDs



LED Over 80" Submersible Trailer Lights

- CPL001-80** Without license light
- CPL002-80L** With license light
- Acrylic lens / high impact housing
- Stop/tail/turn rear and side reflector, side marker and license illuminator



LED Over 80" Wide Submersible Trailer Lights

- CPL83** Without license light
- CPL83L** With license light
- Acrylic lens, polypropylene housing
- 18 gauge wire



Incandescent Trailer Lights

- TL01** Non-submersible S/T/T light
- TL01L** Non-submersible S/T/T with license light



AGRICULTURAL LIGHTS



Incandescent Agricultural Light Kit

AG-KIT-MAG With magnet kit (pictured)
AG-KIT Without magnet kit

- 4 amber lights (forward and rear facing) and 2 red lights (rear-facing) per kit
- 35' wishbone harness with 7-pin plug



35' LED Light Kit Combo

AG-KIT-LED Standard AG Kit (pictured)

AG-KIT-LED-MAG AG Kit with Magnet Kit

AG-KIT-LED-HD AG Kit with Heavy Duty cable

AG-KIT-LED-HD-MAG AG Kit with Heavy Duty cable & magnet kit

- 4 amber LED lights (forward and rear facing) & 2 red LED lights (rear facing) per kit
- Kit has turn signal function, tail light and brake functions
- 35' bonded cable (wishbone) with 7-pin plug



Split Lens Towing Lights

SPL30B-6 30 ft. 6-plug

SPL30B-7 30 ft. 7-plug

SPL50B-6 50 ft. 6-plug

SPL50B-7 50 ft. 7-plug

- 120# pull magnets • 10 ft. between lights



Heavy-Duty Incandescent Agricultural Light Kit

AG-KIT-HD Without Magnet Kit

AG-KIT-HD-MAG With Magnet Kit

- 4 amber LED lights (forward & rear facing) & 2 red LED lights (rear facing) per kit
- Kit has turn signal function, tail light and brake functions
- 35' bonded cable (wishbone) with 7-pin plug



Pole Mount Rotating Beacon Lights

STR-DIN-A

- Polycarbonate amber lens
- 55-watt rotating light
- Flexible hard rubber case
- Mounts on standard DIN mount

Pole Mount for Rotator Beacon

MNT-DIN

- Mounting bracket for DIN rotating light
- This bracket is a 2 wire hook up
- Light slides onto this pole for quick mounting
- Threaded to mount into 1" hole



Tractor Light Control Box

LCB400

- Connect to 12V battery • Accepts 7 round plugs • Magnet Mount • Controls Tail lights, turn signals and emergency flashers

COMMERCIAL TOW LIGHTS



Incandescent Round Base Heavy-Duty Towing Lights

HDTL30B 4R plug Stock box
HDTL30CC 4R plug Carry case

- 30 ft. cord
- 70# pull magnets
- 7 ft. span



LED Heavy-Duty Towing Lights

LED30B-SQ 90# Square magnets Stock box
LED30B 70# Round magnets Stock box

- 30 ft. cord
- 4R Plug
- 7 ft. span



Magnetic Tow Lights

ATL20A Clamshell packaging

- 20 ft. cord, 5 ft. span
- 4-flat plug & strong magnets



E-Z Mount Tow Lights

EZT20B Clamshell packaging

- 20 ft. cord
- 5 ft. span
- 4-flat plug



LED Heavy-Duty Towing Lights

LED30CC-SQ 90# Square magnets Carry case
LED30CC 70# Round magnets Carry case

- 30 ft. cord
- 4R plug
- 7 ft. span

Incandescent Heavy-Duty Towing Lights

HDTL30CC 70# Round magnets Carry case
HD30CC-SQ 90# Square magnets Carry case
HD30B-SQ 90# Square magnets Stock Box

- 30 ft. cord
- 4R plug
- 7 ft. span



Suction Cup Mounted Towing Lights in Case

HDSC30CC Incandescent
LEDSC30CC LED

- Industrial strength
- 30 ft. cord
- 4R plug
- Carry case

Available with any plug.



LED WORK LIGHTS WITH CREE DIODES

LITE^{IT}



21" long

14" long

7" long

Combo Flood/Spot LED Work Light Bars

WL120WBARC 120-watt LED bar with 40 CREE diodes – 8800 lumens

WL72WBARC 72-watt LED bar with 24 CREE diodes – 5280 lumens

WL36WBARC 36-watt LED bar with 12 CREE diodes – 2640 lumens

- 10-30V operation
- Light bars are rated IP67
- Mounting hardware included
- Die cast aluminum housing

Combo Flood/Spot LED Off-Road Work Light Bars

- IP67 waterproof rating
- Lens is polycarbonate
- 12-24V operation
- 2 mounting brackets included

15" long



WL60WBARC

- 5,400 lumens
- 60 Watts

22.5" long



WL100WBARC

- 9,000 lumens
- 100 Watts

30" long



WL140WBARC

- 12,600 lumens
- 140 Watts



50" long

WL240WBAR-CURV

50" long

WL240WBARC (not pictured) 41.5" long

- 21,600 lumens
- 240 Watts



50" long

WL288WBARC

50" long

WL288WBAR-CURV (not pictured) 51.4" long

- 26,000 lumens
- 288 Watts



Build-A-Bar

WL30BAB-SPT Spot
WL30BAB-FLD Flood

- Build your own customized light bar!
- Each unit is 7" long
- 30-Watt with CREE diodes
- 3000 lumens
- Easily connects together with hardware included
- Make any length or height you need!
- 10-30V operation
- Polycarbonate lens, IP67



Spot



Flood

Work Light Bar Accessories

Snap-On Lenses

WL6ALENS	6"	Amber Lens
WL6RENS	6"	Red Lens
WL6BLENS	6"	Black Lens
WL8ALENS	8"	Amber Lens
WL8BLENS	8"	Black Lens



WL36WBARC with
ONE 6" Amber Lens



WL72WBARC with
TWO 6" Red lenses

Plug & Play Wiring Harnesses

HARDT1 Wire harness with 1 DT waterproof connector, one relay and lighted switch

- Will light up one of the following: WL36WBARC, WL60WBARC, WL72WBARC, WL100WBARC, WL120WBARC & WL140WBARC

HARDT2 Wire harness with 2 DT waterproof connectors, one relay and lighted switch

- Will light up two of the following: WL36WBARC, WL60WBARC, WL72WBARC, WL100WBARC, WL120WBARC & WL140WBARC

HARATP1 Wire harness with 1 ATP waterproof connector, one relay and lighted switch

- Will light up one of the following: WL200WBARC, WL240WBARC, WL240WBAR-CURV, WL288WBARC, & WL288WBAR-CURV



LED WORK LIGHTS

LITE^{IT}



18-Watt LED Slim Flood Light

WL19F

- 1320 Lumens
- 10-30V operation
- 6.5" x 1.75" x 2.5"
- 90 degree flood
- Die cast aluminum housing, polycarbonate lens



15-Watt Compact LED Light

WL15SMTM

- 1260 Lumens
- 10-30V operation
- 1.75" x 3" x 0.5"
- 90 degree flood
- Rubber mounting pads
- Surface or pipe mount



80-Watt LED Spot/Flood Light

WL80FS

- 6720 lumens
- 10-30V operation, IP69
- 7" Diam. x 8.5" H x 4.5" D
- 16 5-Watt CREE LEDs
- Die cast aluminum housing



22.5-Watt LED Slim Work Light

WL22RCT

- 2850 lumens
- 10-30V operation, IP67
- 6" X 3.75" x 1.25"
- 60 degree flood pattern



PAR 36 LED Retrofit 18-Watt

WL18-HP

Flood

WL18HP-TRAP

Trapezoid

- 1500 lumens
- 12-24V operation
- 4.5" diameter
- CREE diodes & polycarbonate lens
- Fits in PAR36 housing (CP2203)



60-Watt LED Flood Light

WL6000

- 5400 lumens
- 10-30V operation
- CREE diodes, IP67
- 90 degree flood pattern

WL6000ALENS



15-Watt LED Flood Light

WL15F

- 1200 lumens
- 10-30V operation
- 4.25" x 4.25" lens
- Stud or surface mount
- Less than 1.5" thickness



18-Watt LED Flood Light

WL18F

- 1350 lumens
- 10-30V operation
- Durable aluminum housing
- 4.5" diameter lens
- Stud mount & surface mount
- Waterproof sealed to IP67



18-Watt LED Flood Light

WL18RCT

- 1350 lumens
- 10-30V operation
- 60 degree flood pattern
- 4-3/8" x 2-1/2" x 2-1/4"
- Stud mount & surface mount
- Waterproof sealed to IP67



9-Watt LED Wide Flood Light

WL9RCT

- 720 lumens
- 10-30V operation
- 90 degree flood pattern
- 4-3/8" x 2-1/2" x 2-1/4"
- Stud mount & surface mount
- Waterproof sealed to IP67



10-Watt LED Flood Light

WL10F

- 900 lumens
- 10-30V operation
- 40 degree flood pattern
- CREE diodes
- Stud mount & flush mount
- Waterproof sealed to IP67
- 2-5/8" x 2-5/8" x 2-5/8"



27-Watt LED Flood Lights

WL93FR Round light
WL93FW Square light

- 1900 lumens
- 10-30V operation
- Stud mount & surface mount
- Waterproof sealed to IP67



24-Watt LED Flood Lights

WL83FR Round light
WL83FQ Square light

- 1680 lumens
- 10-30V operation
- Stud mount & surface mount
- Waterproof sealed to IP67



20-Watt LED Flood Light

WL20WF

- 1800 lumens
- 10-30V operation
- CREE diodes
- 4-3/8" x 2-1/2" x 2-1/4"
- Stud mount & surface mount
- Waterproof sealed to IP67



15-Watt LED Bullet Light

WL15-MINI

- 1125 lumens
- 15W CREE LED flood light
- Connectable
- 2-5/8" Diameter x 3-3/8" deep
- Stainless steel bracket
- IP68 waterproof rating

STROBE BEACONS



HF20RL



HF20RL-R



HF20RL-B



HF20RL-W

LED Battery Operated Rotating Beacon *Magnet Mount*

- LED Rotating Beacon
- 25 lb. pull magnet
- Takes 4 AA Batteries
- Adjustable rotation speed
- 5" diameter x 4-1/4" high
- Use on farm equipment, warehouse equipment, cars or trucks



HF45A



HF45R

LED Flashing/Rotating Beacon *Magnet Mount*

- Battery Operated (Takes 4 AA batteries)
- Can flash or rotate
- IP Rating 65
- Durable polycarbonate lens
- Strong magnetic mount
- Flashing: 180/min.
- Rotating: 85/min.



3.5" Amber LED Beacon

STR30AM

- 3.5" diameter light with 5" diameter base, 4" tall
- Magnetic or permanent mount (screws not provided)
- One flash pattern
- 32 quint flashes per minute
- 30 amber LED diodes
- 7.5 Watts
- 10" cord with on/off switch

CLASS I BEACONS



27-Watt LED Class I Rotating Beacon *Surface/Magnet Mount*

STR27RFM

- Surface mount / magnetic mount
- Class I
- 10-30V operation
- 2 Patterns: Flashing & Rotating
- Cigarette plug
- Polycarbonate lens
- 5.59" diameter x 4.29" high

Quad Flash 60 LED Strobe *Permanent Mount*

STR-60LED

- Class I
- 10-30V operation
- Flange Mount
- 5" diameter by 5" high
- 60 bright LEDs



Quad Flash 120 LED Strobe *Permanent Mount*

STR-120LED

- Class I
- 10-30V operation
- Permanent mount with rubber case
- 5" diameter by 4-3/4" high
- 120 bright LEDs





LED STROBES

LITE^{IT}



LED Slim Line Strobes

- 19 flash patterns
- Can synchronize with other lights
- Very Low profile – only ½” thick!
- IP Rating: 67
- CREE Diodes
- Weatherproof with vibration resistant design
- 1.25” high x ½” deep
- 6-watts are 4.5” long
- 4-watts are 3.75” long



Colors Available in 4-Watt

- STR41A Amber (pictured)
- STR41W White
- STR41AW Amber/White (pictured)



Super low-profile for discreet mounting!

Colors Available in 6-Watt

- STR61A Amber (pictured)
- STR61R Red
- STR61W White
- STR61B Blue
- STR61AW Amber/White (pictured)
- STR61RW Red/White
- STR61RB Red/Blue



STR1AW-LED
Amber and White

2 Double Color 18-Watt LED Lights

- Waterproof connectors
- 6-foot main cable
- 9-feet of cable between lights
- 14 different flash patterns



STR1RW-LED
Red and White

- Low-power consumption LEDs
- 2-3/8” x 2” black bezel
- 1” diameter when used as hideaway
- Can be synchronized with multiple lights



LED High Power Strobe Light

- STR3A Amber
- STR3R Red
- STR3W White

- DC 10-30V operation
- Available in amber, red and white
- 4-7/8” L x 1-3/4” H x 7/8” D
- Synchronize or stand-alone operation
- 15 different flash patterns
- Amp draw less than 0.5A



LED High Power Strobe Lights

- Polycarbonate lens • Polished aluminum base
- 4-watt LEDs • 10-30V operation • 0.5 amp draw
- Extremely bright LEDs • Flush Mount
- 4.85" x 2" rectangular • Self Contained



STRL4W
White



STRL4A
Amber



STRL4R
Red



STRL4G
Green



10-Watt LED Strobes

- STR1A-LED** Amber
- STR1R-LED** Red
- STR1W-LED** White

- Each strobe is surface mount or flush mount w/ bracket (included)
- Extremely powerful 10-watt diode with 14 different flash patterns
- Lens is 1" diameter
- Can be mounted inside headlights and tail lights



Multi-Function Strobe Relay for LED Lights

STR-MRLY

- Hook up to any LED light and make it strobe
- Drives up to 420mA or a pair of "most" LED tail lights
- Several selectable flash patterns

Quad Flash Strobe Relay for LED Lights

STR-QRLY

- Hook up to any LED light and make it strobe
- Drives up to 420mA or a pair of "most" LED tail lights



STR8W



STR8R



STR8A



STR8AG



STR8AW

Dual Row Strobes

- 15 flash patterns
- Synchronize function with more lights
- Operating voltage: 10-30V
- Surface mount
- 4-1/2" wide x 3" high x 1-1/4" thick
- Available in 5 color options

LED TOW LIGHT BARS



- All units have side markers
- Cables sold separately



25" long

BTR-25

- Powered by 4 pin socket



36" long

BTR-36-SM

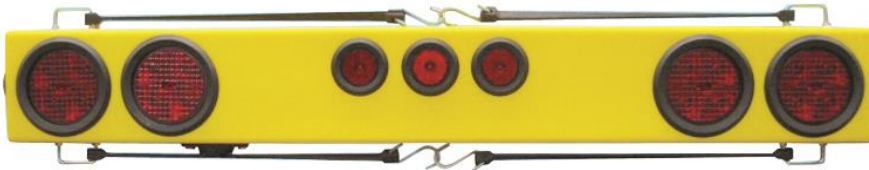
- Separate turn and brake signals
- Comes with both 4 and 7 pin sockets



48" long

BTR-48-O

- Separate turn and brake signals
- Comes with 7 pin heavy duty round socket



48" long

BTR-48-R

- Separate turn and brake signals
- Comes with both 7 pin heavy duty round socket



48" long

BTR-48-RF

- Separate turn and brake signals
- 2 flashing amber lights that come on with markers
- Comes with 7 pin heavy duty round socket



48" long

BTR-48-R9

- Separate turn and brake signals
- 2 extra 4" brake lights
- Comes with 7 pin heavy duty round socket

Heavy-Duty Extensions

EXT30-4PP	30' cord	4 plug to 4 plug
EXT60-4PP	60' cord	4 plug to 4 plug



INCANDESCENT TOW LIGHT BARS



- Rubber strap mounting
- Available in white PVC only
- New LED side markers
- Cables sold separately



36" long

WP36SM

- Separate turn and brake signals
- Comes with both 4 and 7 pin sockets



48" long

WP48O

- Separate turn and brake signals
- Comes with 4 and 7 pin sockets



48" long

WP48R

- Separate turn and brake signals
- Comes with 4 and 7 pin sockets



48" long

WP48R-F

- Separate turn and brake signals
- Includes 2 amber flashers that turn on with the markers
- Comes with 4 and 7 pin sockets



60" long

WP60R

- Separate turn and brake signals
- Comes with 4 and 7 pin sockets



60" long

WP60R-F

- Separate turn and brake signals
- Includes 2 amber flashers that turn on with the markers
- Comes with 4 and 7 pin sockets

Heavy-Duty Extensions

EXT30-7PP	30'	14/7 cord	7 plug to 7 plug
EXT60-7PP	60'	14/7 cord	7 plug to 7 plug
EXT30-7PP-6	30'	16/6 cord	7 plug to 7 plug
EXT60-7PP-6	60'	16/6 cord	7 plug to 7 plug





Lite-It Wireless Tow Lights are unsurpassed in durability. Among the many features, our units are individually serialized to protect against loss, theft and prevent cross talk between other units in the vicinity. All Lite-it Wireless tow lights are FCC approved. Each bar or set have full stop, turn signal, tail light and side marker functions. The taillights only come on when they are needed thus saving battery life.

- **Make sure to register your light bar! No warranty work will be done on unregistered products.**
- Latest technology chips
- All connectors are shrink-tube
- All lights are hard wired
- 3 year warranty
- FCC approved
- Individually serialized and programmed to eliminate cross talk between other units
- Lights come with transmitter, 12V charger and port covers
- Run times from 12 to 30 hours
- 1000 foot line of site visibility
- Charge indicator light



Two Individual Wireless Light Units LIW-1 (set)

- 105# pull rubber coated magnet mounting
- 4 Pin connection



23" S.M.A.R.T. Rider

LIWSR1

- Magnetic mount – Two 90# pull rubber coated magnets
- 4 pin connection (7 blade connection also available)



RC-Monitor Kit

LIW-RC-MON

- Monitors battery strength and status
- 96 dB alarm and red warning light when bar is left behind
- Individually programmed to your light bar
- No additional wiring needed



25" Wide with Flasher

LIW-250-FL-4

- Oval amber flasher on a separate switch
- Magnetic mount – Two 105# pull rubber coated magnets
- 4 Pin connection



Agricultural Wireless Tow Lights

LIW-AGKIT

- 120# pull rubber coated magnet mounting
- 2-1/2" strobes on front to warn oncoming traffic
- Available in safety green or black
- 7 blade connection (also available in 4 or 6 pin round)



25" Wide

LIW-250-4

- Three 2" center markers
- Two 105# pull rubber coated magnet mounting
- 4 Pin connection



36" Wide

LIW-36R-7R

- Rubber strap mounting
- 7 pin connection

42" Wide

LIW-420-7R

- Rubber strap mounting
- 7 pin connection



48" Wide

LIW-48RFS-7R

- Auto delay flasher that turns off when a turn signal or brake is applied
- Rubber strap mounting plus ratcheting straps
- 7 pin connection

48" Wide

LIW-48R-7R

- Rubber strap mounting
- 7 pin connection



36" Wide

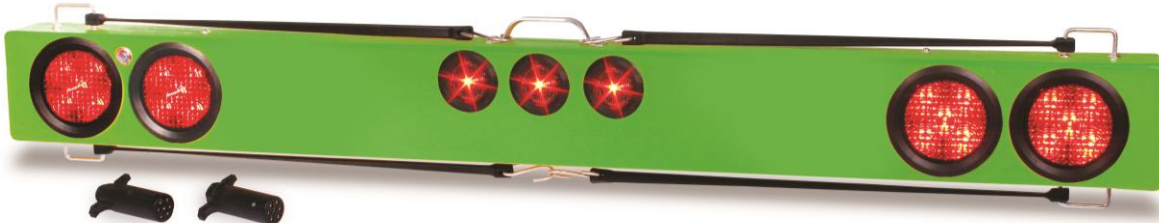
LIW-36RF-7R

- Auto delay flasher that turns off when a turn signal or brake is applied
- Rubber strap mounting
- 7 pin connection

60" Wide

LIW-60RFS-7R

- Auto delay flasher that turns off when a turn signal or brake is applied
- Rubber strap mounting plus ratcheting straps
- 7 pin connection



60" Wide

LIW-60R-7R

- Rubber strap mounting
- 7 pin connection

ACCESSORIES



Rubber Mounting Grommets

G2G	2" Round	G26G	2.5" Rectangular
G25G	2.5" Round	G55G	5.5" Rectangular
G25G-O	2.5" Open Back	G4G	4" Round
G25G-CB	2.5" Closed Back	G65G	6.5" Oval



Steel Mounts for Lights

MNT2	Fits 2" grommet and light
MNT25	Fits 2.5" grommet and light
MNT4R	Fits 4" grommet and light
MNT65	Fits 6.5" grommet and light



**4 Pin to 4 Pin
Cable Union**
BTR-4-CU



**7 Pin to 7 Pin
Cable Union**
BTR-7-CU

Heavy-Duty Extensions

EXT30B	30'	4 plug to 4 socket
EXT60B	60'	4 plug to 4 socket



Rubber Boots for Magnets

MB100 Rubber Boots (pair)
 • Protects against scratching
 • Fits CP0808 magnet



Dual Purpose Mounting Bracket

MNT-STRL
 • Aluminum mounting bracket for STRL lights
 • Bracket is pre-drilled for mounting 3 of our CPL1 lights



Tow Light Partners

TLP01 Tow light partner (pair)
 • For use with magnets on non-metallic surfaces

Bulk Trailer Cable

CP39D	16/4 trailer cable
CP39C	16/6 trailer cable
CP39F	14/7 trailer cable
CP39G	14/2 trailer cable



Square Magnetic Base

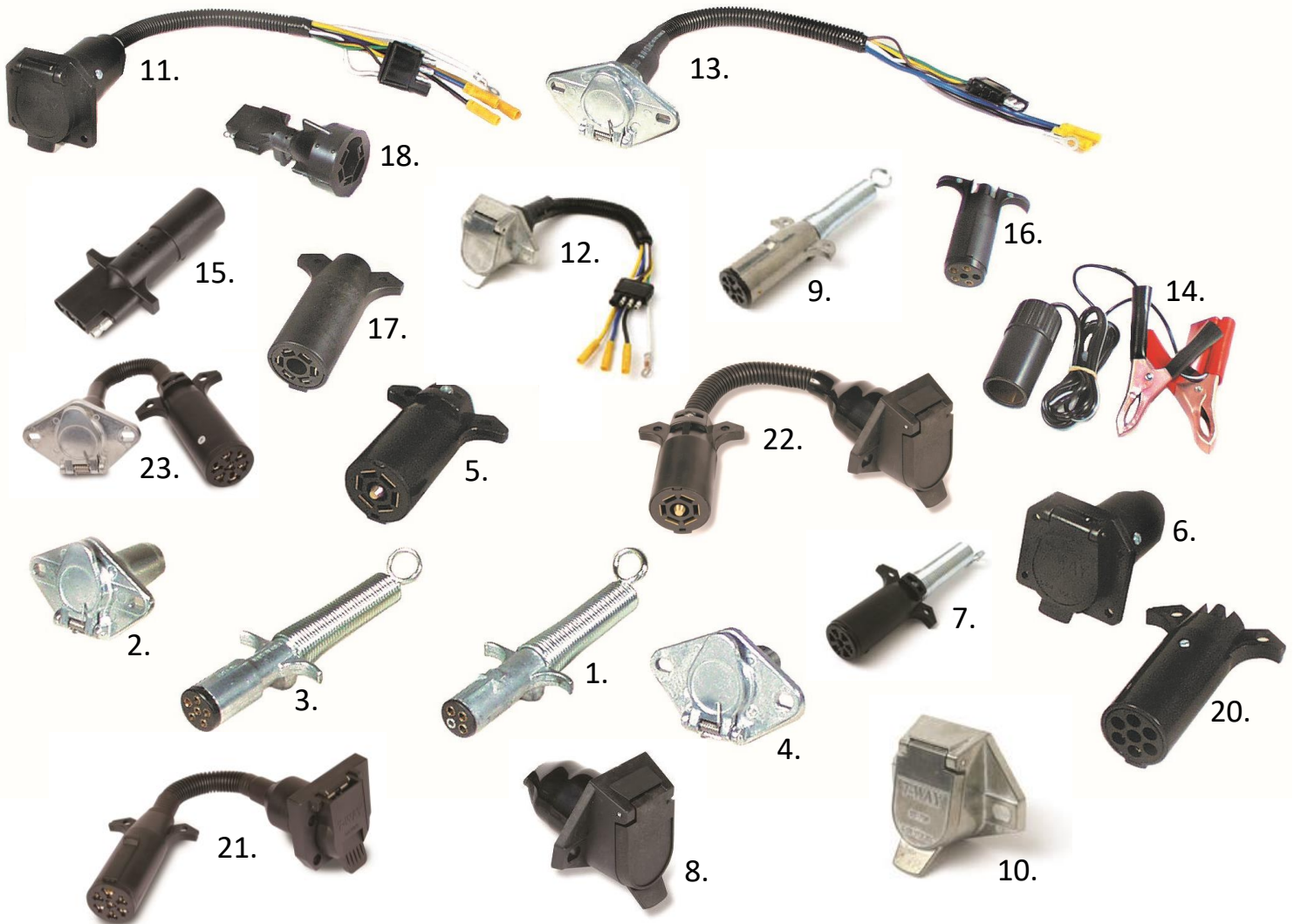
CP70
 • 90# pull



Replacement Magnets

CP0850	35# pull	2-1/6" diameter
CP0865	65# pull	2-3/4" diameter
CP0808	95# pull	3-1/4" diameter
CP0885	110# pull	3-7/8" diameter

PLUGS, SOCKETS AND ADAPTERS



- | | | | | | |
|-----|--------------------|---|-----|-----------------|--|
| 1. | PLG4R | 4-round plug with wire guard, die cast, trailer end | 13. | KIT-6R-4 | 6-round connector kit, prewired for 4-flat |
| 2. | PLG4R-SKT | Receiver socket for 4-round plug, die cast, truck end | 14. | 12VBA | 12V battery adapter, battery clips to cigarette plug |
| 3. | PLG6R | 6-round plug with wire guard, die cast, trailer end | 15. | ADP001 | Adapter, 4-round to 4-flat (1 piece) |
| 4. | PLG6R-SKT | Receiver socket for 6-round plug, die cast, truck end | 16. | ADP6R-4F | Adapter, 6-round to 4-flat |
| 5. | PLG7B | 7-blade plug, no wire guard, ABS, trailer end | 17. | ADP7B-6R | Adapter, 7-blade to 6-round |
| 6. | PLG7B-SKT | 7-blade receiver socket, ABS, truck end | 18. | ADP7B-4F | Adapter, 7-blade to 4-flat |
| 7. | PLG7R | 7-round plug with wire guard, ABS, trailer end | 19. | ADP7B-5F | Adapter, 7-blade to 5-flat (not pictured) |
| 8. | PLG7R-SKT | 7-round receiver socket, ABS truck end | 20. | ADP7P-4F | Adapter, 7-round to 4-flat |
| 9. | PLG7R-DC | 7-round plug with wire guard, die cast, trailer end | 21. | ADP7R-7B | Adapter, 7-round trailer to 7-blade truck end |
| 10. | PLG7RSKT-DC | 7-round receiver socket, die cast, trailer end | 22. | ADP7B-7R | Adapter, 7-blade to 7-pin (for lights) |
| 11. | KIT-7B-4 | 7-blade connector kit, prewired for 4-flat | 23. | ADP7R-4R | Adapter, 7-round to 4-round socket |
| 12. | KIT-7P-4 | 7-pole connector kit, prewired for 4-flat | | | |

SPECIALTY PRODUCTS



FKL6W

- 6-watts
- Blue Spotlight with clear lens
- 8 degree spot beam
- IP Rating: 67
- 2 3-watt CREE diodes

Blue Spot Lights

- Use on agricultural sprayers to increase visibility!
- Use on fork lifts to increase warehouse safety!



FKL8W

- 8-watts
- Blue Spotlight
- 9-32V operation
- IP Rating: 68
- 2 4-watt CREE diodes



Flash Controller with Remote

FLASH-CNTRL

- 12 flash patterns & steady-on feature
- 400-watt output



Green or Red Boat "Bow" Light – LED

BOW-GR-B Green
BOW-RED-B Red



Back-Up Alarm

BK97DB

- 97 dB
- 12-24V operation
- Surface Mount



Extension Cord with Illuminated Switch

EXT3-CIG



LED License Lights

LL-LED-CHR Chrome
LL-LED Black
 ● 2 wire



Clear Interior LED Light

CPL33C

- With chrome bezel
- 4 LED
- Built-in 2 wire

SMV & CONSPICUITY



1/2 Moon Reflectors

- RFL-HMA – Amber
- RFL-HMR – Red
- RFL-HMA-12 – Amber 12-pack
- RFL-HMR-12 – Red 12-pack
- Adhesive backs

Adhesive Reflectors

- RFL-12R Red
- RFL-12W White
- 12" x 1"
- Adhesive backs & mounting holes



CONSPICUITY / REFLECTIVE TAPE STRIPS



Rolls

CTRW-30RL	30' roll	Red/White reflective
CTRW-150RL	150' roll	Red/White reflective
CTRW-150RL-DP	150' roll	Red/Silver reflective (diamond plate pattern)
CTRED-30RL	30' roll	Red reflective
CTRED-150RL	150' roll	Red reflective
CTYELLOW-30RL	30' roll	Yellow reflective
CTYELLOW-150RL	150' roll	Yellow reflective
CTOR-30RL	30' roll	Fluorescent orange
CTOR-150RL	150' roll	Fluorescent orange
CTWHITE-30RL	30' roll	Silver reflective
CTWHITE-150RL	150' roll	Silver reflective

Strips

CT-AMBER	9" strip	Amber reflective
CT-RED	9" strip	Red reflective
CT-OR	9" strip	Fluorescent orange
CTRW-18	18" strip	Red/white reflective

Emergency Warning Triangles

EMT3-KIT-1

- Weighted
- Three in compact case



Reflective Slow Moving Vehicle (SMV) Emblem

- EMB20A Adhesive SMV sticker
- EMB20GM Galvanized metal SMV sign
- EMP20P Plastic backed SMV sign
- EMB-HDW-SKT Mount kit receiver
- EMB-HDW-SPD Mount kit spade
- All SMV signs conform to ASAE S276.5



INCANDESCENT LIGHTS



- | | | | |
|------------------|---|-----------------|--|
| G119A | 4" X 1.5" Amber Lamp w/ Reflex, 1 Wire | G2R-K | 2" Round Red Light, Grommet, Plug |
| G119R | 4" x 1.5" Red Lamp w/ Reflex, 1 Wire | G2RPC | 2" Round Red Sealed Clearance/Marker Light |
| G120A | 4" x 2" Amber Sealed Bullseye Light | G3A | 3 13/16" Amber Sealed Clearance/Marker Light |
| G120B-C | Chrome Plated Steel Bracket for 120 Series Lights | G3A-K | 3 13/16" Amber Light, Mounting Bracket |
| G120R | 4" x 2" Red Sealed Bullseye Light | G3B-B | Black Mounting Bracket for G3A, G3R, CPL375A, CPL375R |
| G25A | 2.5" Round Amber Sealed Clearance/Marker Light | G3B-C | Chrome Mounting Bracket for G3A, G3R, CPL375A, CPL375R |
| G25A-K | 2.5" Round Amber Light, Grommet, Plug | G3R | 3 13/16" Red Sealed Clearance/Marker Light |
| G25APC | 2.5" Round Amber Sealed Clearance/Marker Light, PC Rated | G3RA | 3 13/16" Red/Amber Sealed Clearance/Marker Light |
| G25AR-K | 2.5" Round Amber Light w/ Reflex, Grommet, Plug | G3RA-K | 3 13/16" Red/Amber Light, Mounting Bracket |
| G25B-G | Surface Mount Bracket for 2.5" Lights w/ Grommet | G3R-K | 3 13/16" Red Light, Mounting Bracket |
| G25G | 2.5" Round Rubber Grommet | G42A | 4" x 2" Amber Oblong Marker Light |
| G25G-CB | 2.5" Round Rubber Grommet, Closed Back | G42R | 4" x 2" Red Oblong Marker Light |
| G25G-O | 2.5" Round Rubber Grommet, Open Back | G4A | 4" Round Amber Sealed Turn Signal Light |
| G25R | 2.5" Round Red Sealed Clearance/Marker Light | G4A-K | 4" Round Amber Light, Grommet, Plug |
| G25R-K | 2.5" Round Red Light, Grommet, Plug | G4CL | 4" Round Clear Sealed Back-Up Light |
| G25RPC | 2.5" Round Red Sealed Clearance/Marker Light, PC Rated | G4CL-K | 4" Round Clear Light, Grommet, Plug |
| G25R-R | 2.5" Round Red Sealed Clearance/Marker Light, w/ Reflex | G4G | 4" Round Rubber Grommet |
| G25RR-K | 2.5" Round Red Light w/ Reflex, Grommet, Plug | G4R | 4" Round Red Sealed Stop/Tail/Turn Light |
| G26A | 2.5" x 1.25" Rectangular Amber Clearance/Marker Light | G4R-K | 4" Round Red Light, Grommet Plug |
| G26A-K | 2.5" x 1.25" Rectangular Amber Light, Mounting Bracket | G4R-R | 4" Round Red Sealed Stop/Tail/Turn Light, w/ Reflex |
| G26APC | 2.5" x 1.25" PC Rated Amber Sealed Clearance/Marker Light | G55A | 5.5" x 3.5" Amber Sealed Turn Signal Light |
| G26B-C | Chrome Mounting Bracket for G26A, G26R, CPL26A, CPL26R | G55A-K | 5.5" x 3.5" Amber Light, Grommet, Plug |
| G26G | 2.5" Rectangular Rubber Grommet | G55G | 5.5" Rectangular Grommet |
| G26R | 2.5" x 1.25" Red Clearance/Marker Light | G55R | 5.5" x 3.5" Red Sealed Stop/Tail/Turn Light |
| G26R-3BAR | Identification Light Bar w/ 3 G26R Lights | G55RCL | 5.5" x 3.5" Red Sealed Stop/Tail/Turn Light w/ Clear Back-Up Light |
| G26R-K | 2.5" x 1.25" Rectangular Red Light, Mounting Bracket | G55RCL-K | 5.5" x 3.5" Red Sealed Stop/Tail/Turn/Back-Up Light, Grommet, Plug |
| G26RPC | 2.5" x 1.25" Rectangular Red Light, PC Rated | G55R-K | 5.5" x 3.5" Red Sealed Stop/Tail/Turn Light, Grommet, Plug |
| G275A | 2 7/8" x 2 1/8" Amber Marker Light | G65A | 6.5" Oval Amber Sealed Turn Signal Lamp |
| G275R | 2 7/8" x 2 1/8" Red Marker Light | G65A-K | 6.5" Oval Amber Light, Grommet, Plug |
| G2A | 2" Round Amber Sealed Clearance/Marker Light | G65ASMA | 6.5" Oval Amber Side Marker Sealed Turn Signal Lamp |
| G2A-K | 2" Round Amber Light, Grommet, Plug | G65CL | 6.5" Oval Clear Sealed Back-Up Light |
| G2APC | 2" Round Amber Sealed Clearance/Marker Light | G65CL-K | 6.5" Oval Clear Light, Grommet, Plug |
| G2B-G | Surface Mount Bracket for 2" Lights w/ Grommet | G65G | 6.5" Oval Rubber Grommet |
| G2G | 2" Round Rubber Grommet | G65R | 6.5" Oval Red Sealed Stop/Tail/Turn Lamp |
| G2R | 2" Round Red Sealed Clearance/Marker Light | G65R-K | 6.5" Oval Red Light, Grommet, Plug |

GLOSSARY

Amperage – the strength of a current of electricity expressed in amperes; Amperage can be calculated by using formula: $\frac{Watts}{Volts} = Amps$.

CREE – market leading lighting manufacturer; known for longevity of 100,000 hour lifetime, brighter LEDs, and less amperage draw. Most Custer lights feature CREE LEDs.

COB (Chips on Board) – Multi-LED chips are packed together as one lighting module; significantly brighter than standard LED lights; saves energy and has a very long lifespan.

Diode – an electronic device that restricts current flow chiefly to one direction.

Flange – A part used to mount lights to surfaces.

Flood – wide pattern of light; light distribution is done by the lens, used best for short distance. Custer light bars and work lights have both flood and spot patterns.

Incandescent – emitting light as a result of the filament being heated.

IP Rating – used to define levels of sealing effectiveness of electrical enclosures intrusion from foreign bodies (dust, dirt) and moisture. Most Custer lights have an IP rating of 67, meaning they are extremely resistant to dust, dirt and water intrusion.

Joule – the equivalent of one watt of power radiated or dissipated for one second.

LED – Light Emitting Diode.

Lumens – the measure of the total “amount” of visible light emitted by a source; there are about 80 lumens per watt.

PC Rated – means that the light is viewable from a 90 degree angle.

Polycarbonate – tough transparent thermoplastics characterized by high impact strength; up to 10 times more impact-resistant than standard plastic or glass.

Polyethylene – lightweight thermoplastic that is resistant to chemicals and moisture.

Spot – narrow intense beam on a small area. Custer light bars and work lights have both spot and flood patterns.

Watts – the measure of electrical power.