

11292

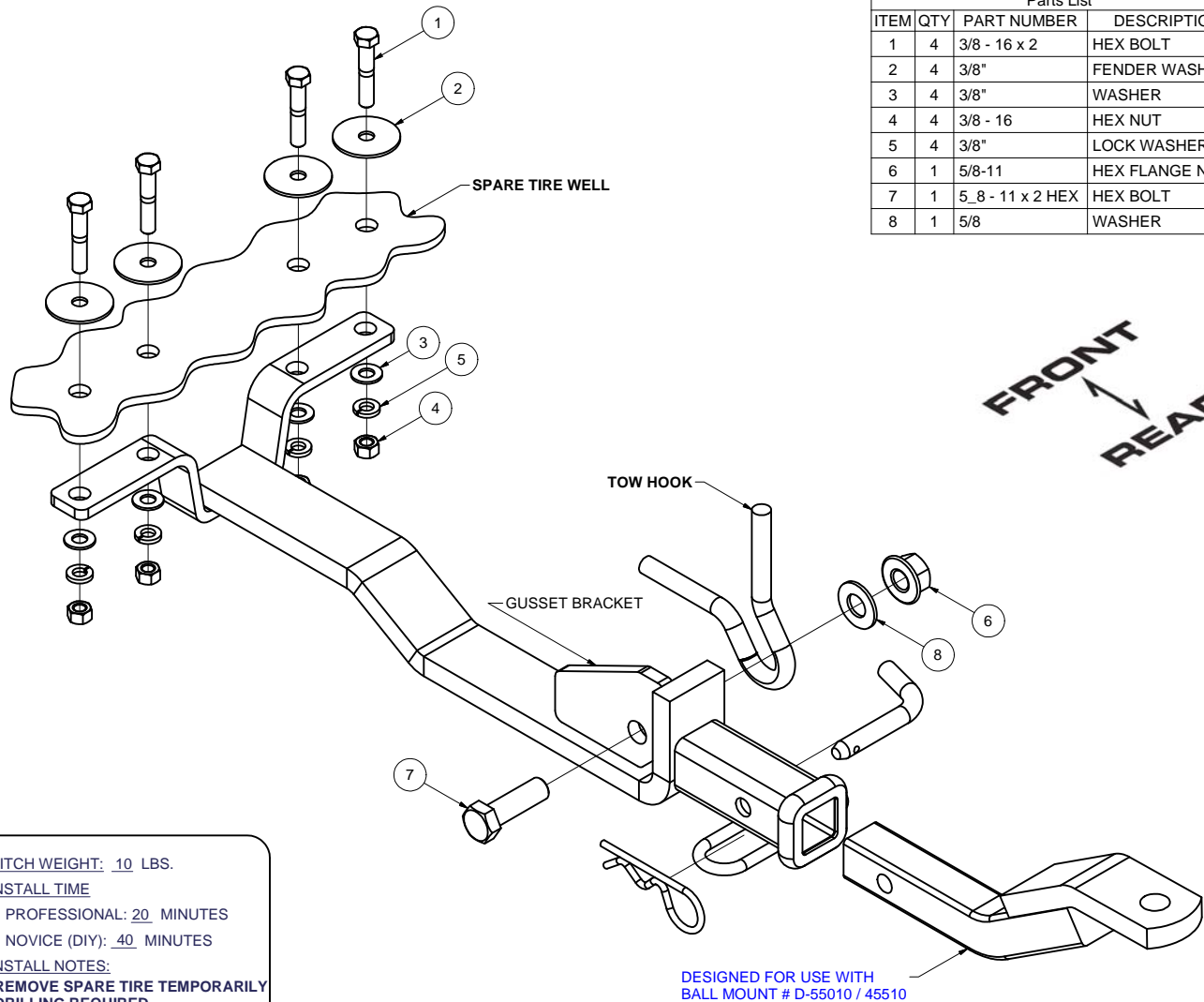
02-05 KIA RIO CINCO WAGON & 01-05 KIA RIO SEDAN
06-CURRENT KIA RIO 5 HATCHBACK

GROSS LOAD CAPACITY WHEN USED AS A WEIGHT CARRYING HITCH: 2,000 LBS. TRAILER WEIGHT & 200 LBS. TONGUE WEIGHT.

DO NOT EXCEED VEHICLE MANUFACTURER'S RECOMMENDED TOWING CAPACITY.

WARNING: ALL NON-TRAILER LOADS APPLIED TO THIS PRODUCT MUST BE SUPPORTED BY 18050 STABILIZING STRAPS.

** FAILURE TO PROPERLY SUPPORT NON-TRAILER LOADS WILL VOID PRODUCT WARRANTY**



Parts List			
ITEM	QTY	PART NUMBER	DESCRIPTION
1	4	3/8 - 16 x 2	HEX BOLT
2	4	3/8"	FENDER WASHER
3	4	3/8"	WASHER
4	4	3/8 - 16	HEX NUT
5	4	3/8"	LOCK WASHER
6	1	5/8-11	HEX FLANGE NUT
7	1	5/8 - 11 x 2 HEX	HEX BOLT
8	1	5/8	WASHER

HITCH WEIGHT: 10 LBS.

INSTALL TIME

PROFESSIONAL: 20 MINUTES

NOVICE (DIY): 40 MINUTES

INSTALL NOTES:

- REMOVE SPARE TIRE TEMPORARILY
- DRILLING REQUIRED

INSTALLATION STEPS

1. Clear trunk and tire well (including spare tire) area for drilling.
2. Lift hitch into position on car with " gusset bracket" to driver side of vehicle tow loop. Install 5/8" fastener set as shown with 5/8" flat washer placed on opposite side of loop.
3. Using the hitch as a template drill spare tire well in four places for 3/8" diameter bolts just forward of stiffener. Install fasteners four places with large fender washers placed inside of tire well opposite the hitch.
4. Torque 3/8" fasteners to 30 ft-lb. and 5/8" fasteners to 150 ft-lb.

PERIODICALLY CHECK THIS RECEIVER HITCH TO ENSURE THAT ALL FASTENERS ARE TIGHT AND THAT ALL STRUCTURAL COMPONENTS ARE SOUND.

Curt Manufacturing Inc., warrants this product to be free of defects in material and/or workmanship at the time of retail purchase by the original purchaser. If the product is found to be defective, Curt Manufacturing Inc., may repair or replace the product, at their option, when the product is returned, prepaid, with proof of purchase. Alteration to, misuse of, or improper installation of this product voids the warranty. Curt Manufacturing Inc.'s liability is limited to repair or replacement of products found to be defective, and specifically excludes liability for incidental or consequential loss or damage.