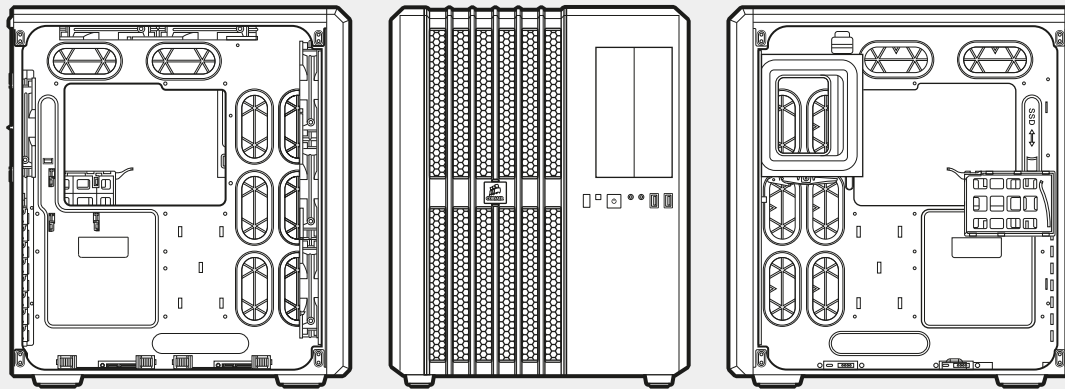
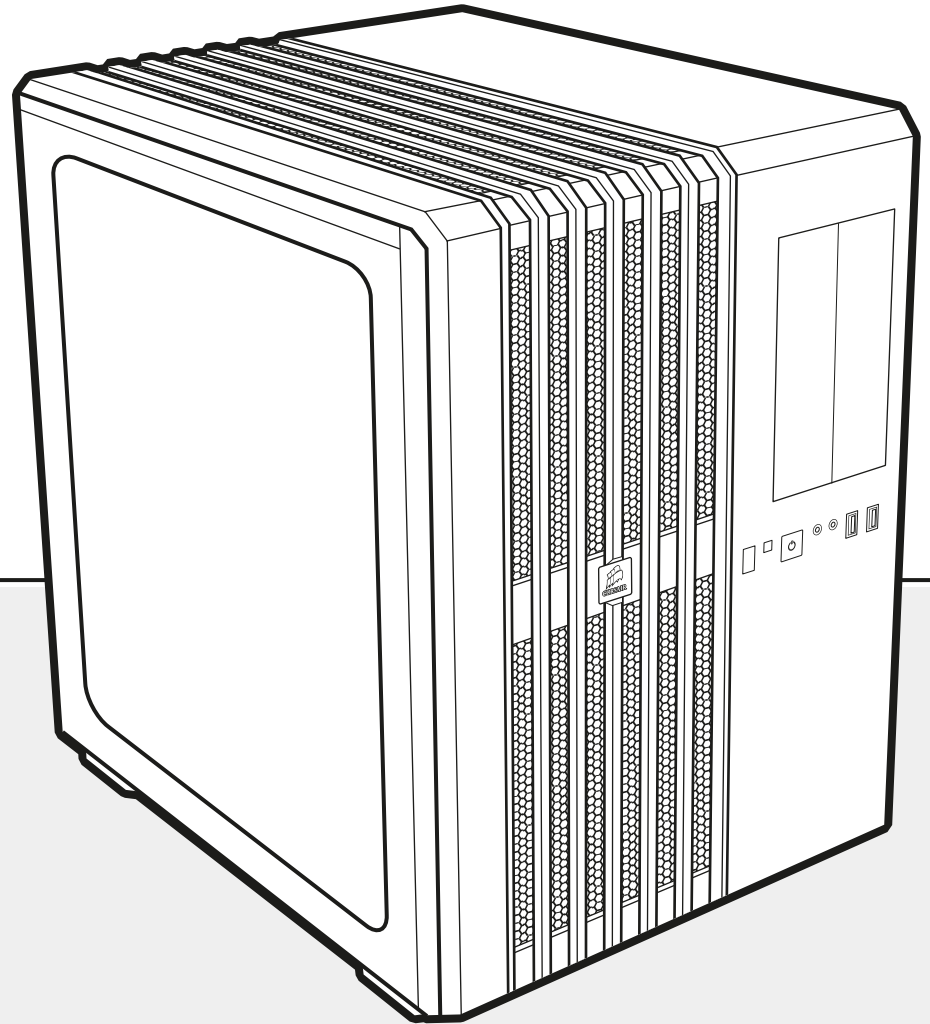




# CARBIDE SERIES® AIR540

HIGH AIRFLOW MID-TOWER CASE

INSTALLATION GUIDE





## CONGRATULATIONS!

Congratulations on your new Carbide Series<sup>®</sup> Air 540. With its Direct Airflow Path™ design and tons of easy-to-use features, you can build a well-cooled PC in minutes, so you can spend less time building and more time enjoying your new system.

Carbide Series<sup>®</sup> Air 540 High Airflow Mid-Tower PC Case with (x1) AF140L rear exhaust fan and (x2) AF140L front intake fan

Installation Guide

Accessory Kit

### Maximum GPU length:

Top slots: 320mm  
Lower slots: 320mm

### Maximum CPU cooler height:

180mm



## CONTENTS



x12

Fan screws (short)



x10

MBD/HDD screws



x8

ODD/SSD screws

### Outstanding Cooling

Our Direct Airflow Path design utilizes dual chambers to deliver cooler air to your CPU, graphics cards, motherboard, memory, and other PCI-E components without your drives or power supply getting in the way.

### Quieter Operation

Carbide Series Air 540 includes 140mm Corsair Air Series AF140L intake and exhaust fans. The AF140L is based on the award-winning AF140 and provides great airflow performance at lower noise levels than typical case fans.

### Ideal for Advanced Air Cooling and Water Cooling

You can mount up to six 120mm or five 140mm fans, or install a 240mm or 280mm top radiator and a 240mm, 280mm, or even 360mm radiator on the front panel. Corsair's innovative cable routing system gives you more options for hiding pumps and tubing out of the way.

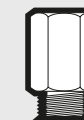
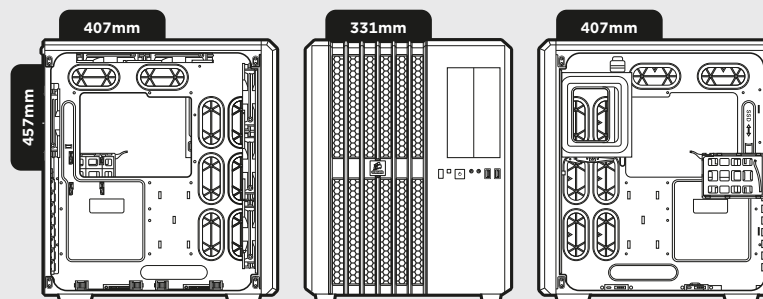
### Built for Builders

Like all Corsair cases, Carbide Series Air 540 is designed for fast, neat, and satisfying builds. You get tool-free PCI-E and storage installation, two internal hot-swap drive bays, and more features for making assembly, upgrades, and maintenance quick and easy. And, the tinted, oversized flush-mount side window lets you show off your work.

### Clever, Space-Saving Design

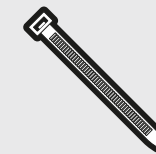
Moving the power supply, SSDs, and optical drives into their own chamber not only improves cooling and lowers noise - it makes for easier builds, too. At only 16" (407mm) deep and 18" (457mm) tall, the 540 offers better cooling performance and flexibility than many larger, more traditional cases.

# CARBIDE SERIES<sup>®</sup> AIR540 HIGH AIRFLOW MID-TOWER CASE



x1

Motherboard Standoffs



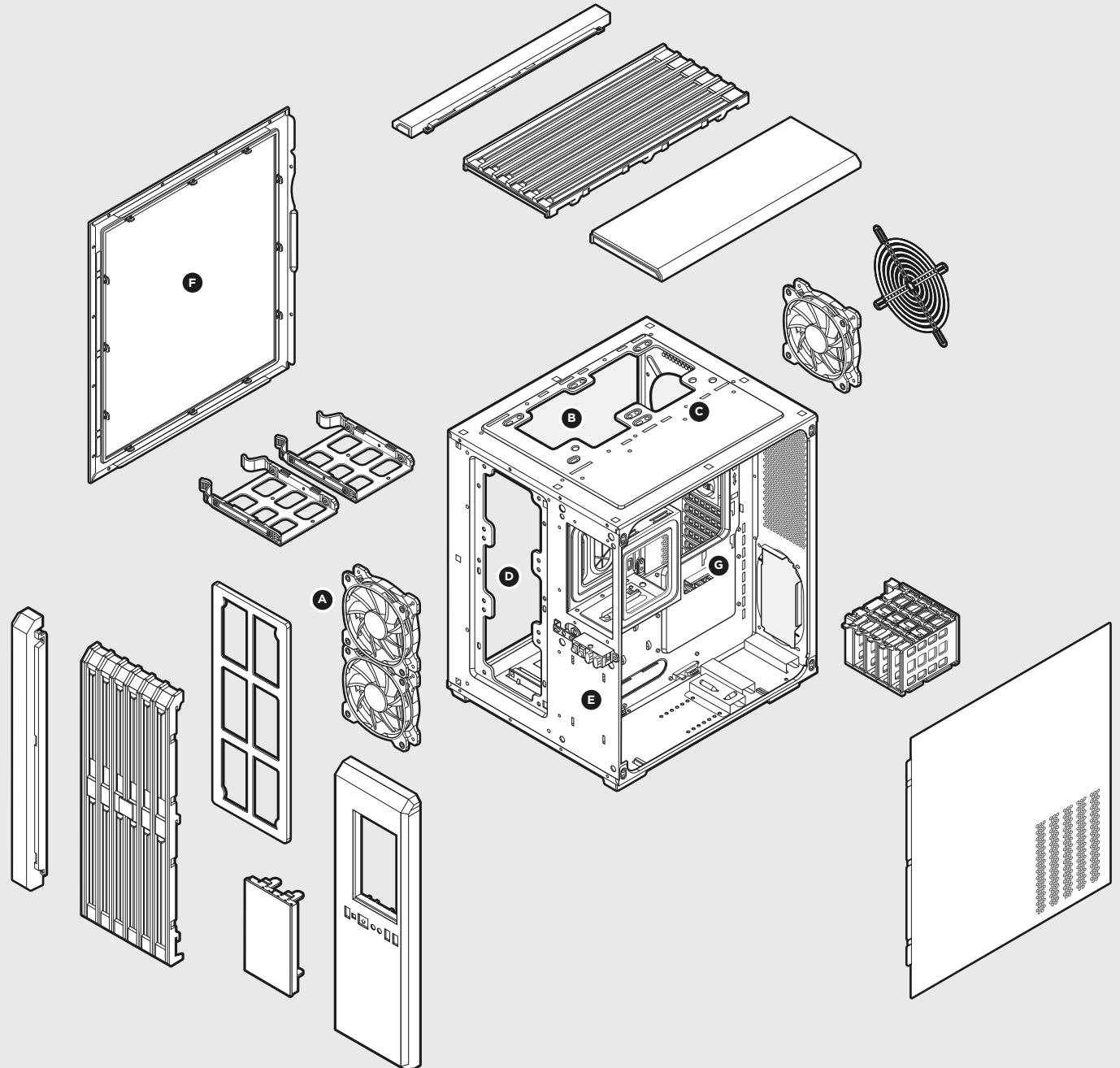
x6

Cable ties



# CARBIDE SERIES™ AIR 540 HIGH AIRFLOW MID-TOWER CASE

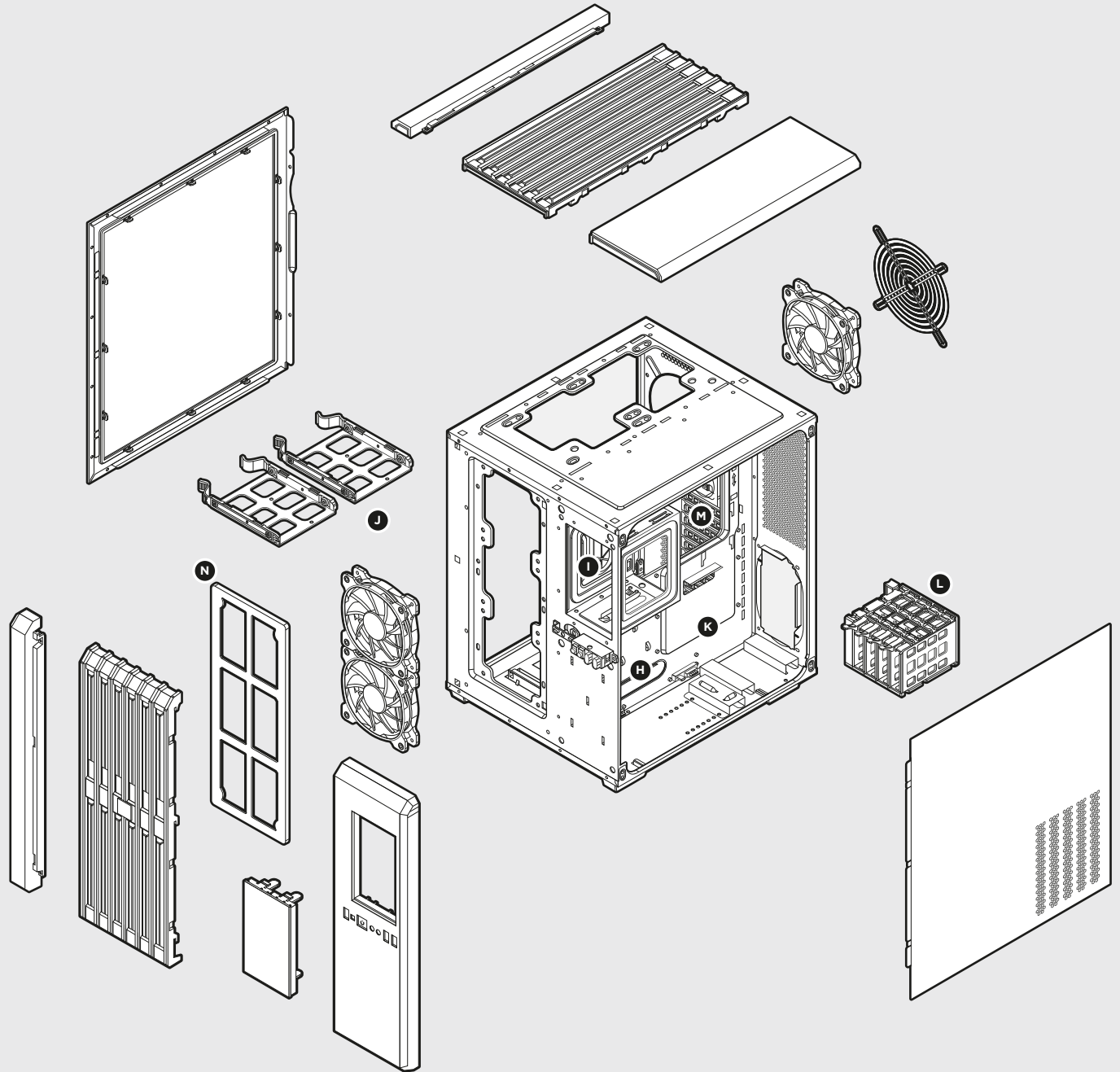
- A** Corsair AF140L (x3) fans included
- B** Top Dual 120mm/140mm fan mounts compatible with 240/280mm radiators
- C** Rear 120mm/140mm fan mounts compatible with 120/140mm radiators
- D** Front Triple 120mm/140mm fan mounts compatible with 240/280/360mm radiators
- E** USB 3.0 (x2) Headphone/Mic, Power/Reset
- F** Full windowed side panel
- G** CPU backplate cutout





# CARBIDE SERIES™ AIR 540 HIGH AIRFLOW MID-TOWER CASE

- H** Built-in cable routing cutouts with grommets
- I** Tool-free optical drive bays (x2)
- J** Tool-free 3.5" hard drive caddy with 2.5" compatibility (x2)
- K** HDD/SDD Hot-swap bay (x2)
- L** Tool-Free expandable 2.5" SSD removable cage
- M** Eight expansion slots for GPUs
- N** Removable Front Magnetic low restriction dust filter

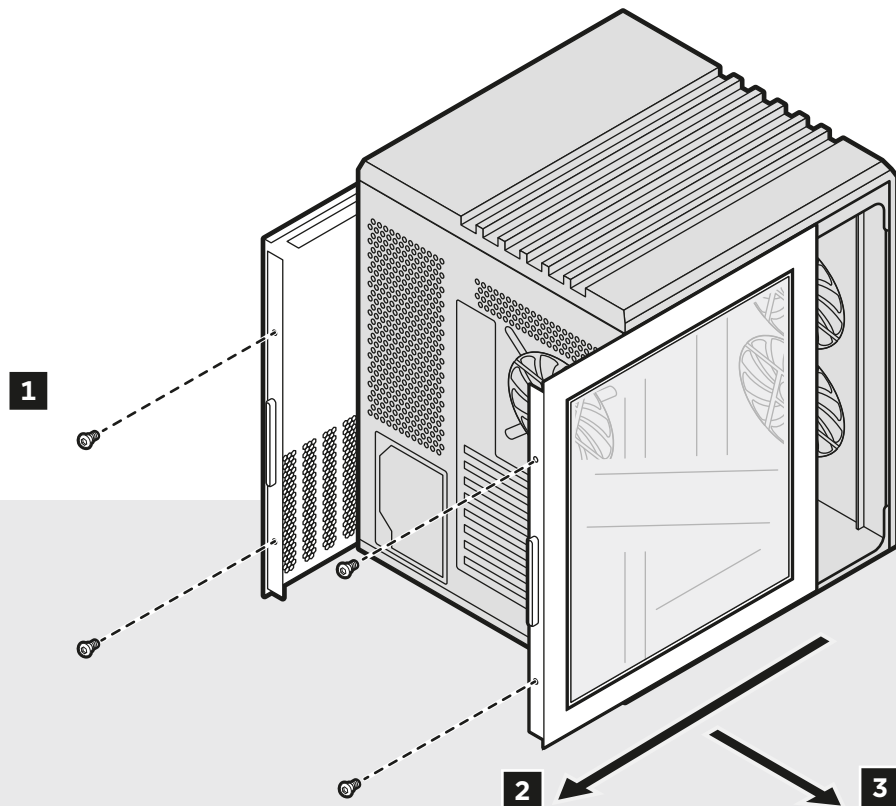


## 01

### Removing the side panels

- Unscrew thumbscrews and remove, then pull side panels outward

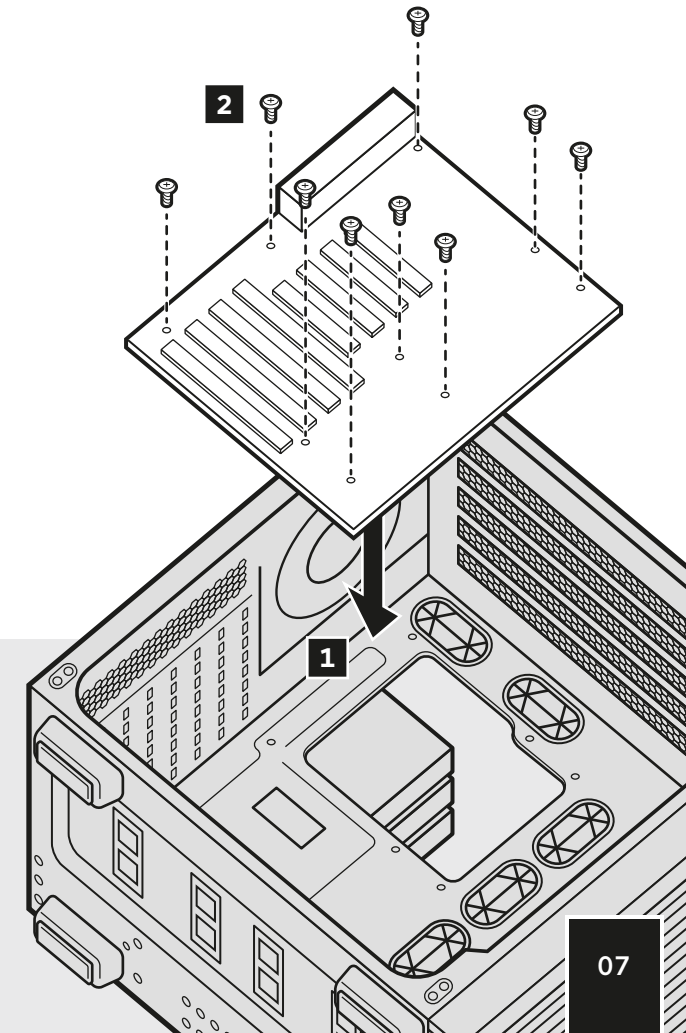
*NOTE: It is advised that both side panels are completely removed and set aside when building your system to avoid accidental damages*



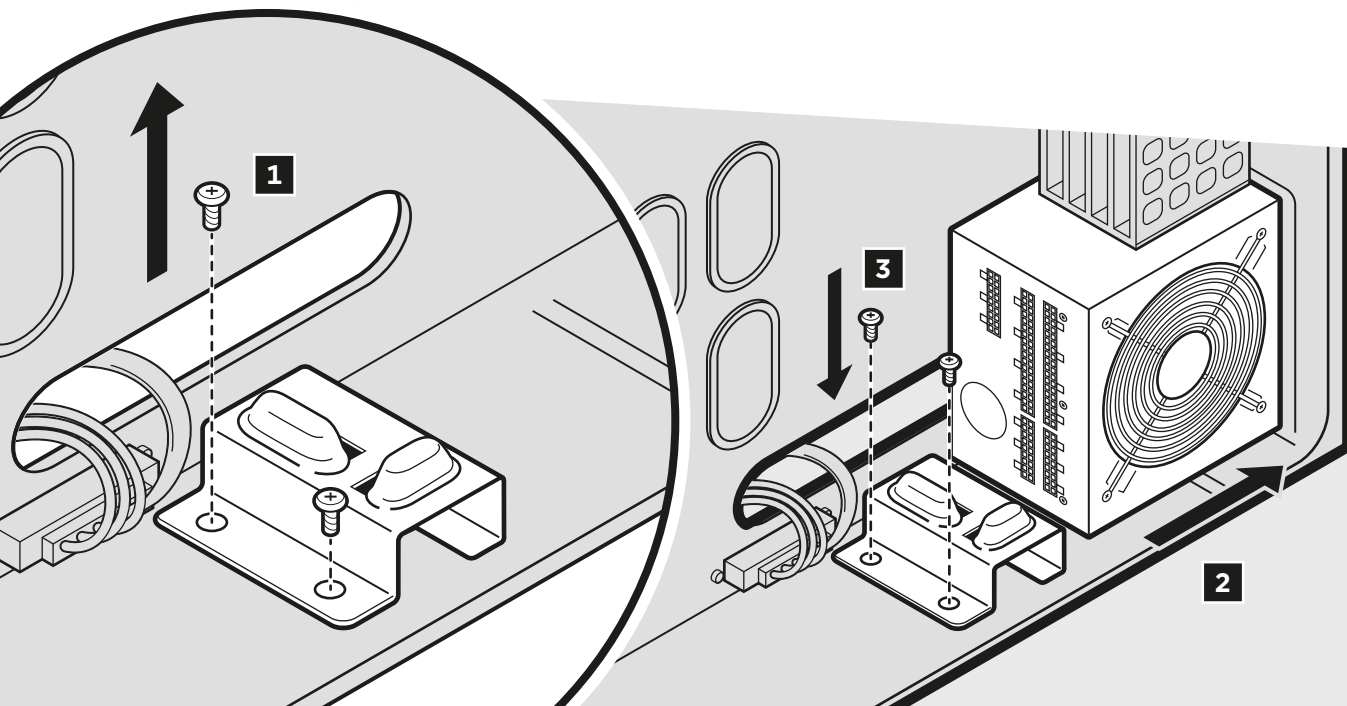
## 02

### Installing the motherboard

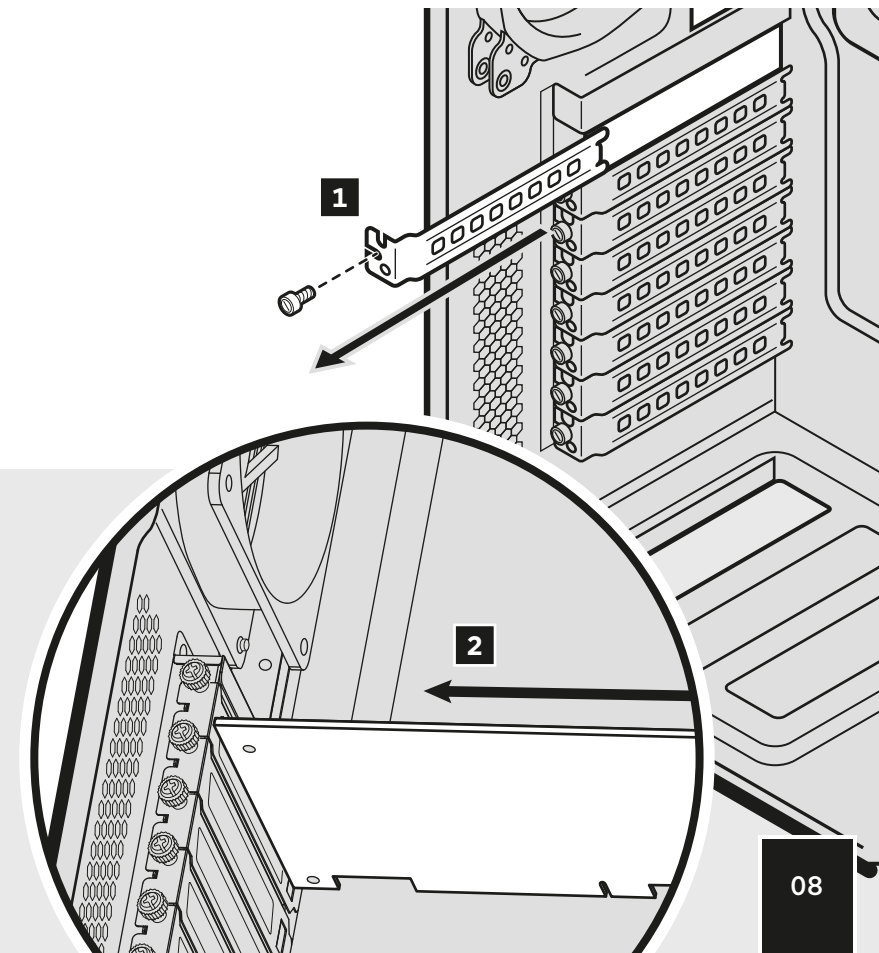
- Install your motherboard's I/O shield (see motherboard manual for guidance)
- Align motherboard with the standoffs in the case
- Secure with included screws (MBD/HDD screws)



- Unscrew and remove PSU mounting bracket
- Place the PSU on the bottom of the case with the fan side facing outwards
- Align holes & secure with screws

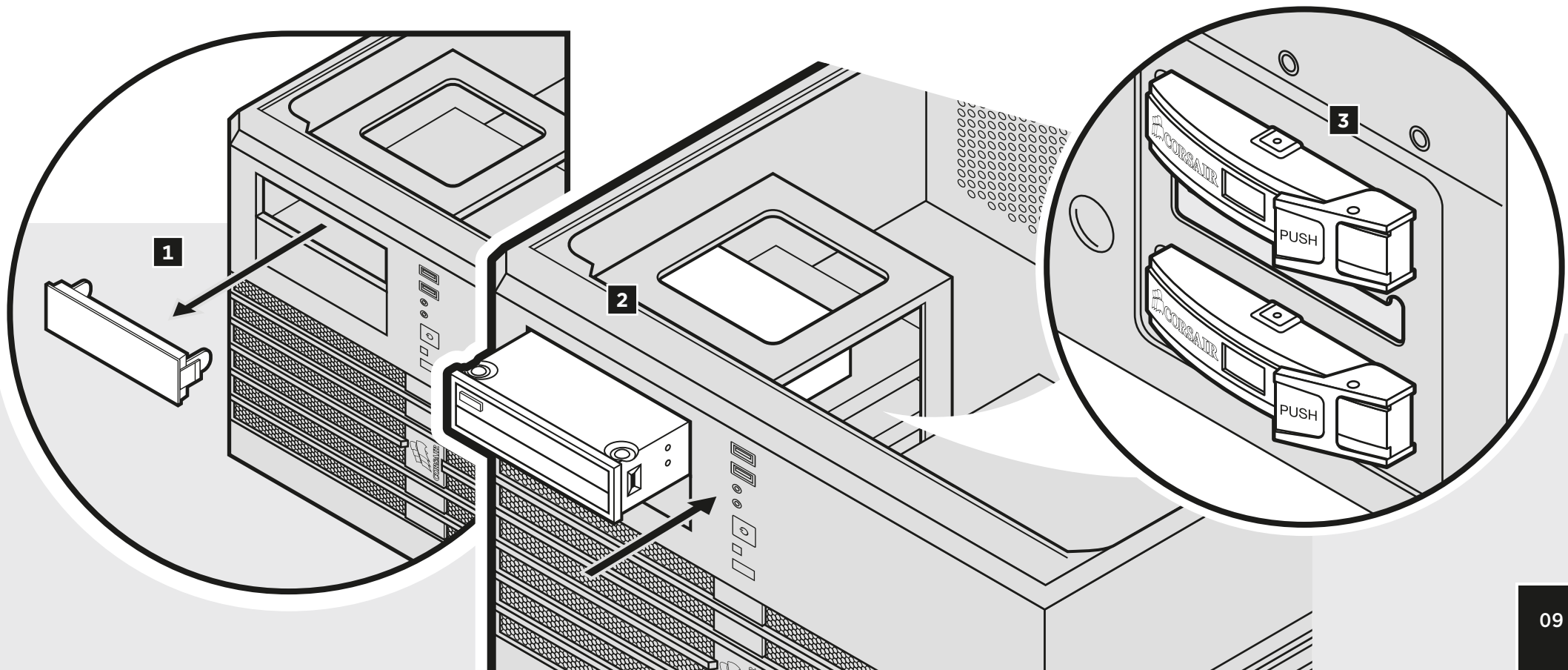


- Remove thumbscrews and corresponding slot cover(s)
- Install the add-on card & secure with thumbscrews



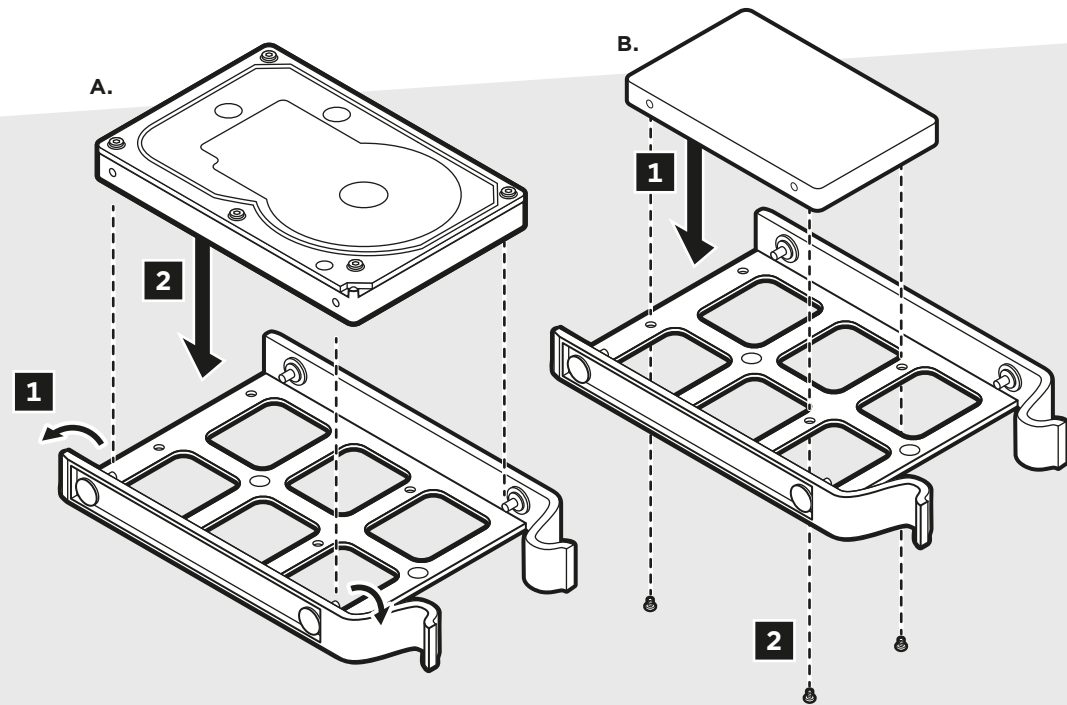
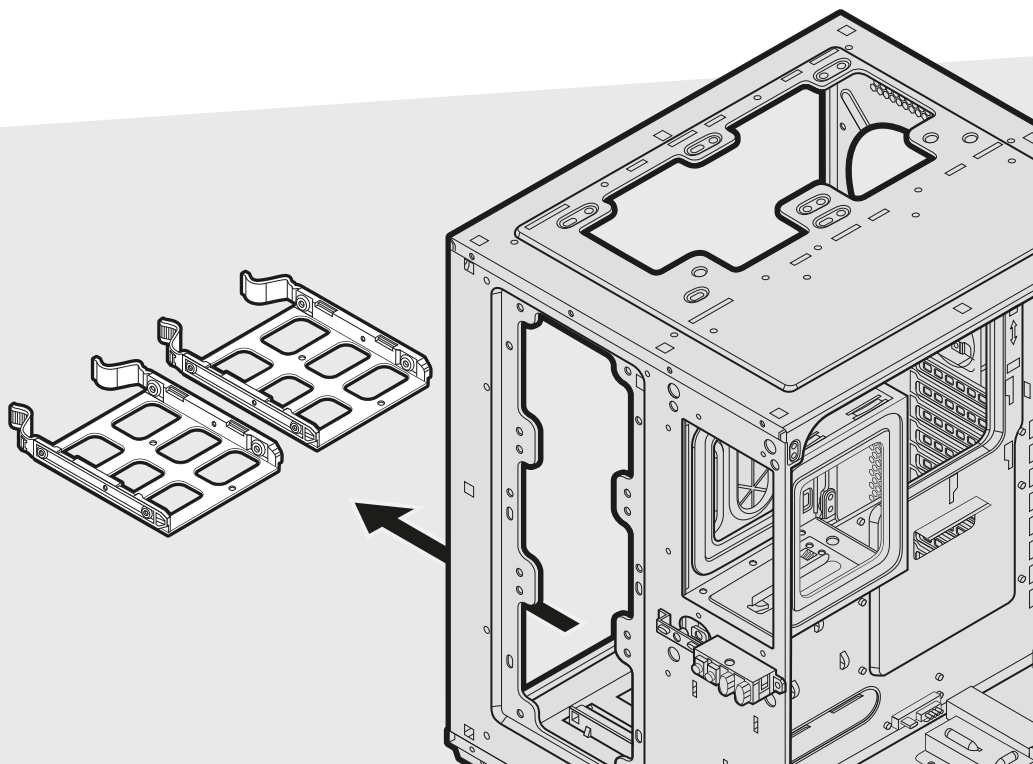


- Remove the front panel 5.25" drive bay cover
- Insert ODD into drive bay until tool-free latch clicks securing the drive
- To remove drive, push tool-free tab to release



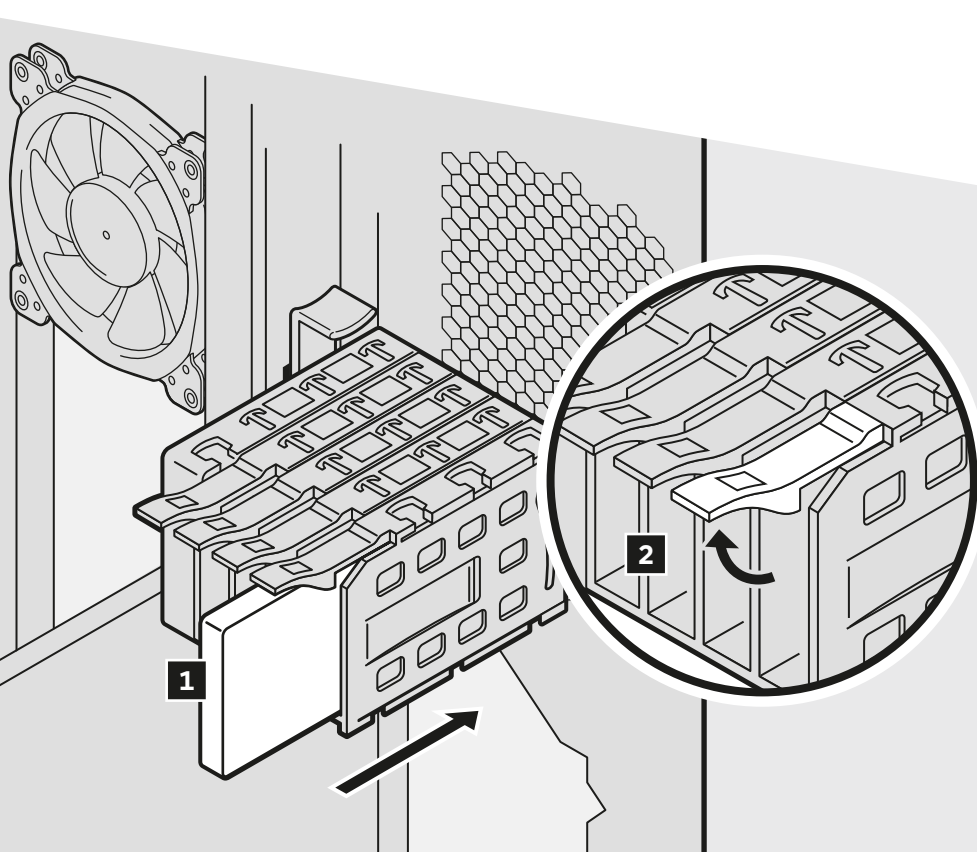
- Remove Tool-free 3.5" HDD tray
- Insert HDD into HDD tray
- Align HDD holes with the tray pins to secure

*NOTE: Tool-free 3.5" HDD tray are also compatible with 2.5" SSD*

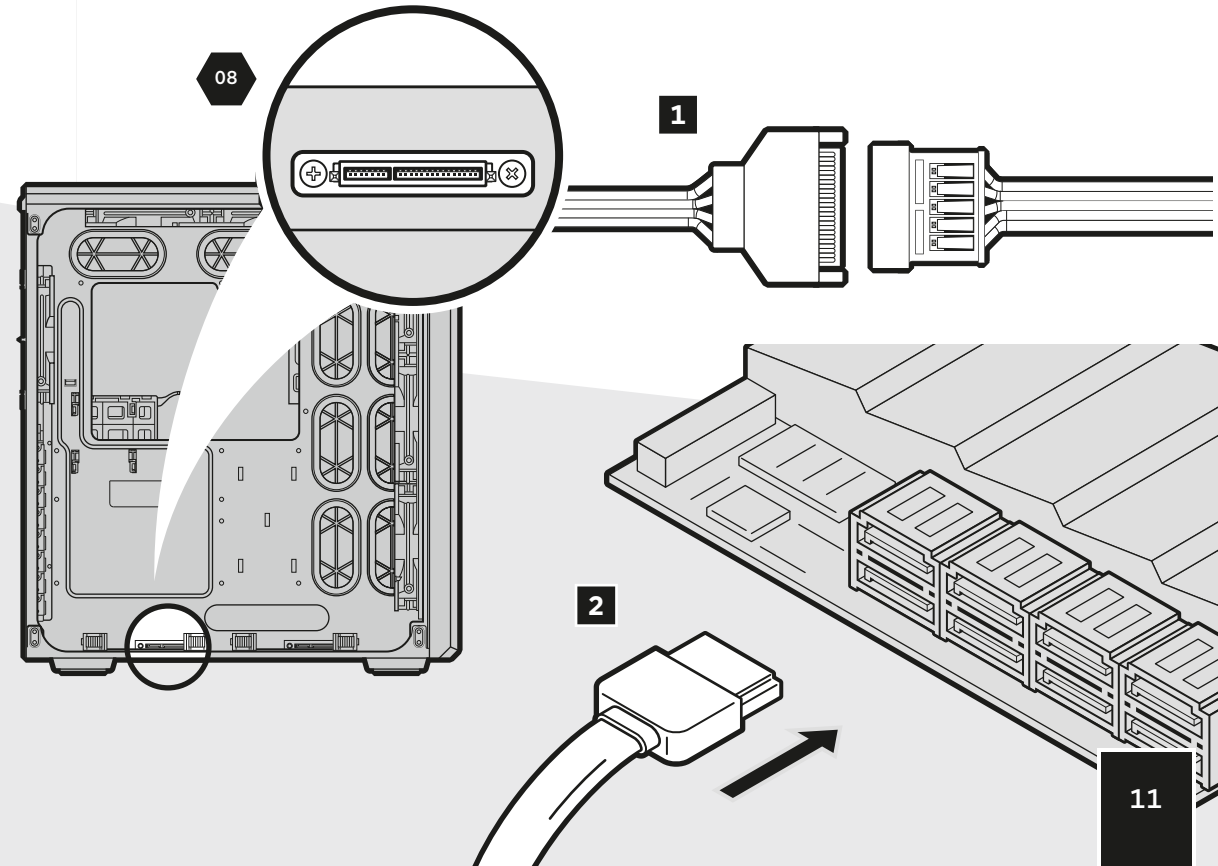




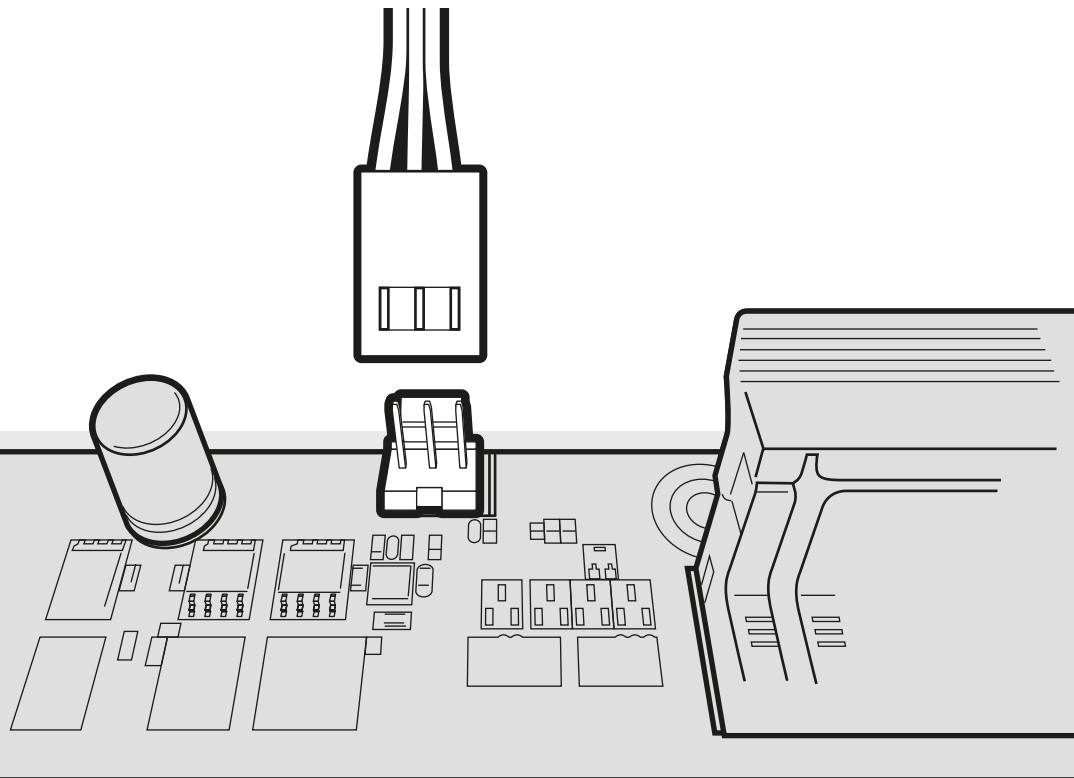
- Place the SSD into the tool-free cage until you feel it secure
- To remove the SSD, pull tab to release



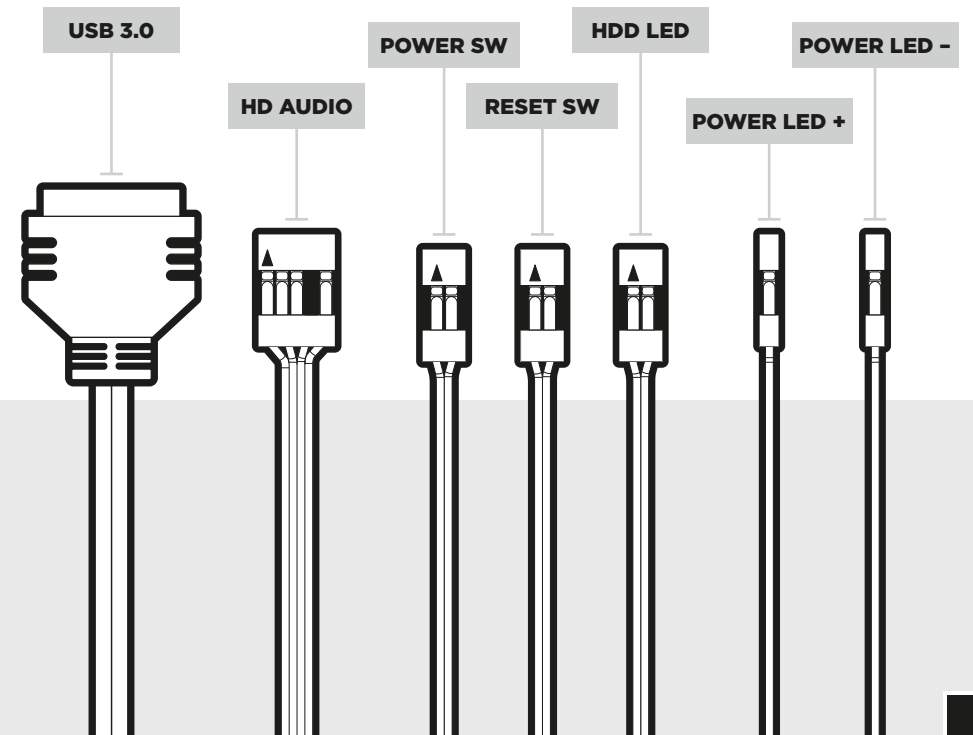
- Plug the Sata connector to the Sata power cable
- Plug the Sata data cable to the motherboard Sata header



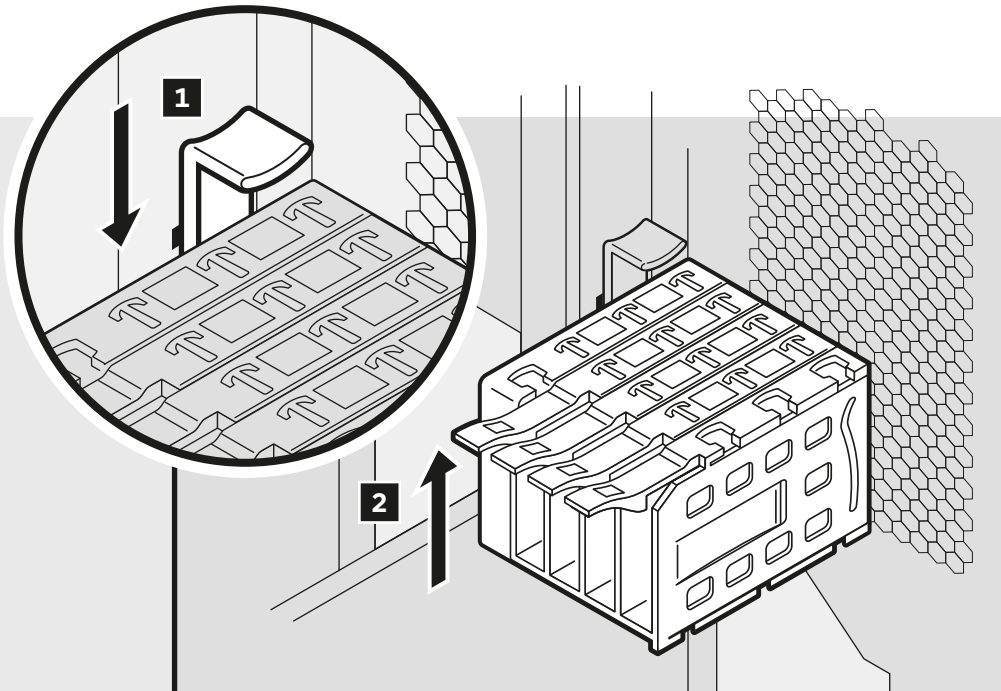
- See motherboard manual for fan header locations



- See motherboard manual for front panel header locations and pin-outs



- To remove, push the tab down to release the SSD cage
- Lift SSD cage up to remove
- To install, align the SSD cage with holes and slide down until secure



- Unscrew the thumbscrews from rear top dust filter
- Pull the top dust filter back and upwards to remove
- Pull the front dust filter up and outwards to remove
- Peel back the magnetic dust filter to remove

*NOTE: Top dust filter must be removed first before front dust filter can be removed*

